

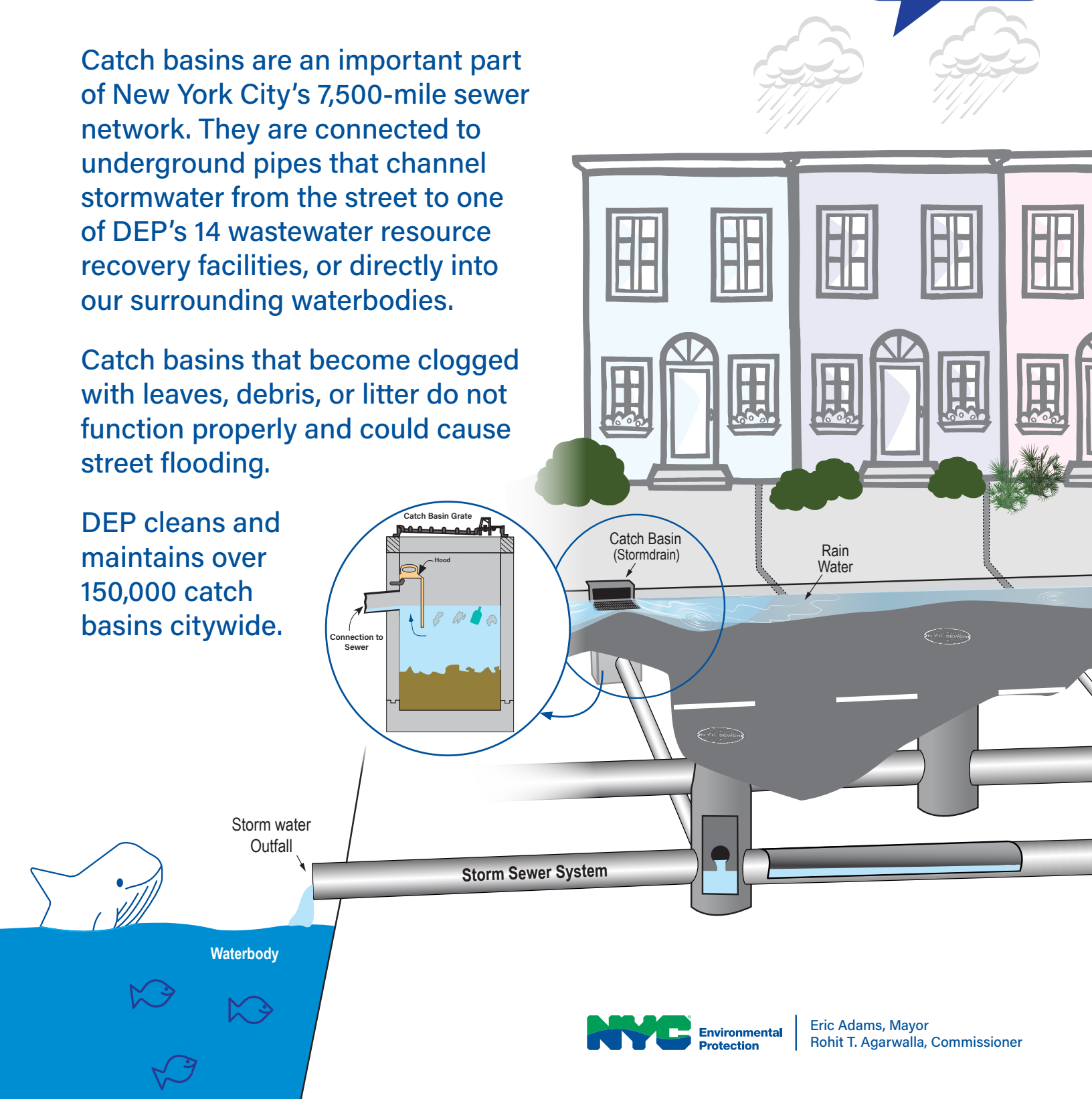
CATCH BASINS

FAQs

Catch basins are an important part of New York City's 7,500-mile sewer network. They are connected to underground pipes that channel stormwater from the street to one of DEP's 14 wastewater resource recovery facilities, or directly into our surrounding waterbodies.

Catch basins that become clogged with leaves, debris, or litter do not function properly and could cause street flooding.

DEP cleans and maintains over 150,000 catch basins citywide.





How does DEP clean catch basins?

DEP uses special trucks with cranes and clamshell buckets to lift the metal grates and remove any debris that is trapped underneath. Catch basins are inspected based on an historical analysis of cleaning and complaints, but at a minimum of once every three years. 15,000 catch basins in commercial areas are inspected twice a year. In addition to our cleaning based on inspections, we also respond to 311 complaints and proactively send staff to inspect catch basins in flood-prone areas to make sure they are clean and working properly when heavy rain is forecasted.

How can I help?

- ✓ Dispose of trash and pet waste appropriately. NOTHING should ever be poured down a catch basin, storm sewer, or street drain.
- ✓ Pitch in and clear a catch basin covered in leaves, debris, or litter.
- ✓ If you witness someone illegally disposing of harmful products, report it to 311 immediately.

What happens to debris that falls into catch basins?

Debris such as plastics, trash, grease and other harmful materials that get washed into a catch basin can make their way into our nearby waterbodies and hurt the wildlife that lives in them.

How does DEP determine where catch basins should be installed?

Our engineers evaluate locations and install catch basins if they determine that they would improve drainage or alleviate flooding. Not every location meets the requirements needed to install catch basins and DEP does not accept requests for installations.

To learn more about DEP's work, visit nyc.gov/dep or follow us @NYCWATER.

