

April 16, 2024
Public Hearing

The current proposal is:

Preservation Department – Item 7, LPC-24-06401

City Hall Park – Individual Landmark Borough of Manhattan

To testify virtually, please join Zoom

Webinar ID: 870 9410 2125

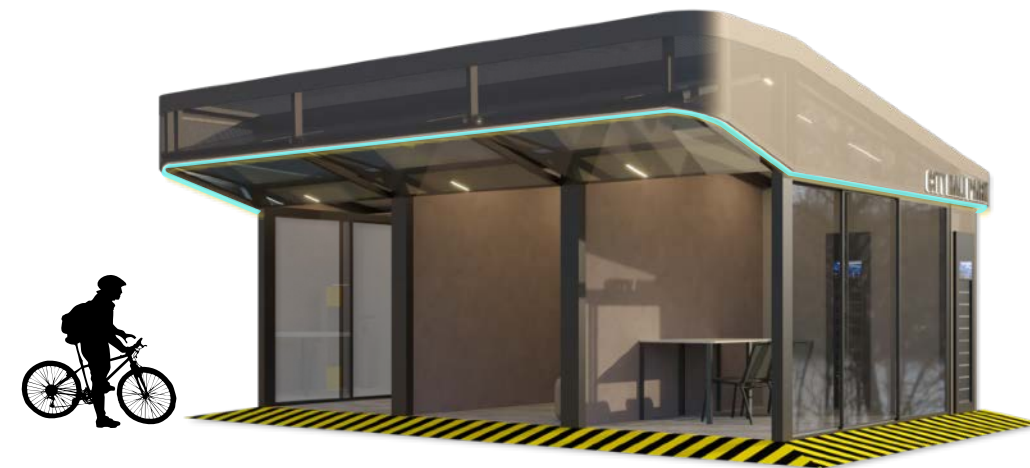
Passcode: 613401

By Phone: 1 646-558-8656 US (New
York) 877-853-5257 (Toll free) US
888 475 4499 (Toll free)

Note: If you want to testify virtually on an item, join the Zoom webinar at the agenda's "Be Here by" time (about an hour in advance). When the Chair indicates it's time to testify, "raise your hand" via the Zoom app if you want to speak (*9 on the phone). Those who signed up in advance will be called first.

DELIVERISTA STREET HUB

CITY HALL PARK

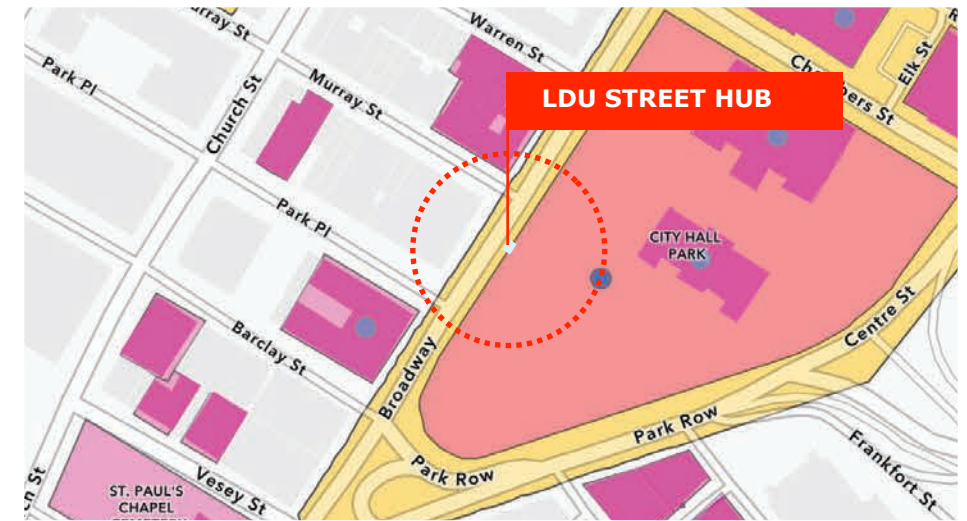
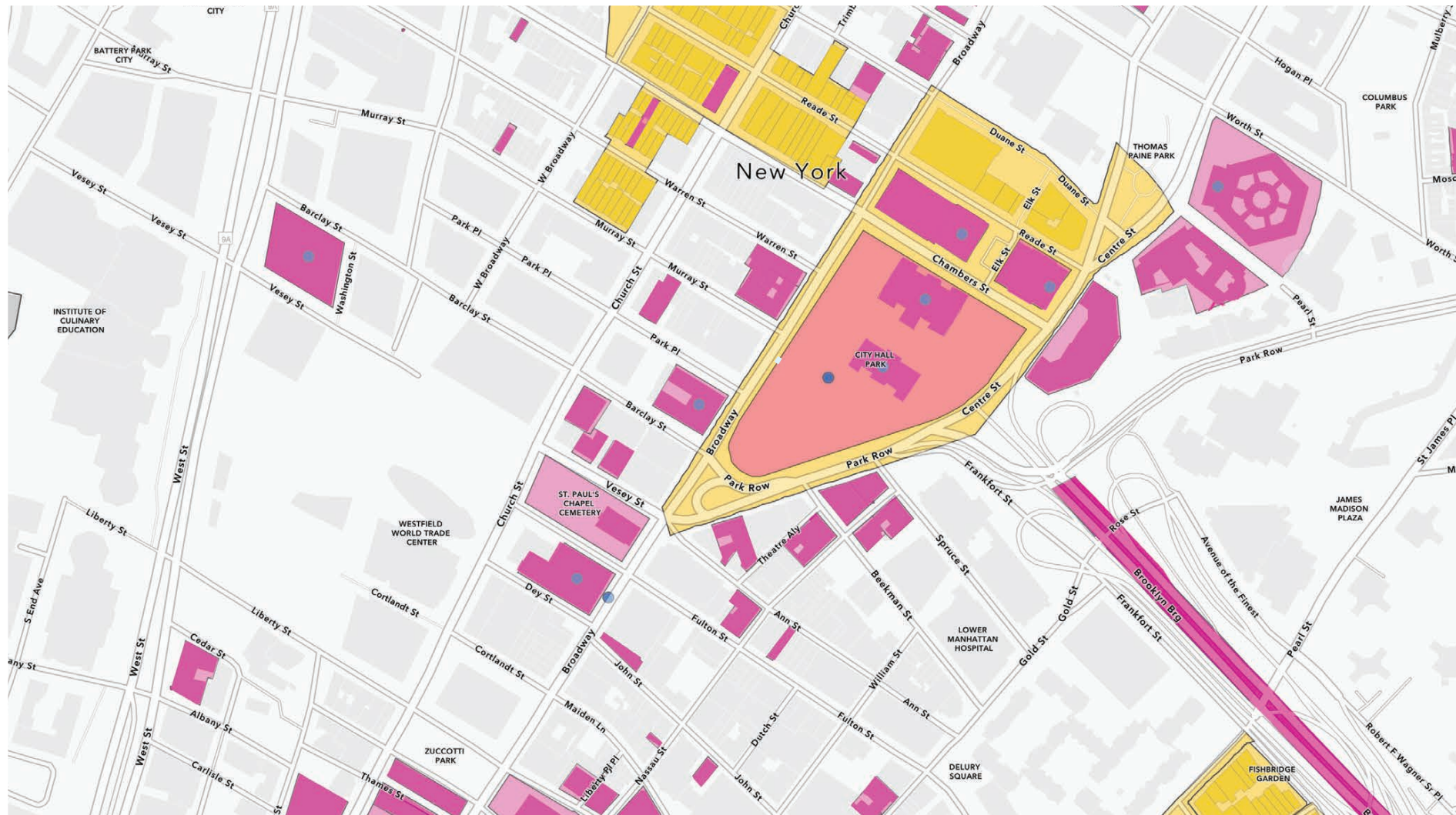


REST

RECHARGE

REPAIR

DESIGNATED LANDMARK + HISTORIC DISTRICT



REST

RECHARGE

REPAIR

CHRONOLOGY OF THE SITE



Fort Amsterdam - Old Fort Windmill (Located at Approximate Location of Current Newsstand)



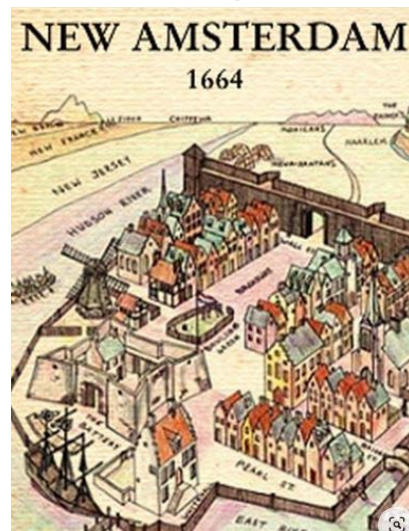
Plan of the City of New York From an Actual Survey by James Lyne 1730/1731



Almhouse -the Precursor of Bellevue Hospital



New Amsterdam Independent Municipality Status Confirmed by the British



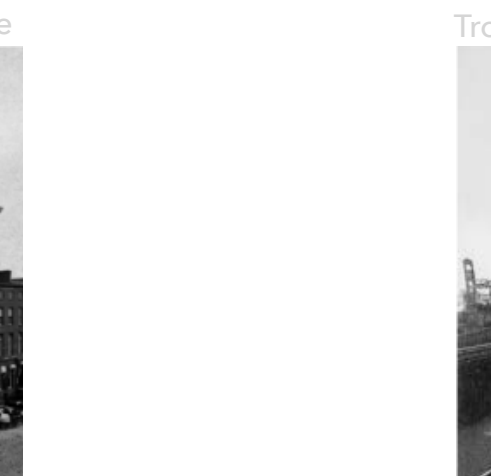
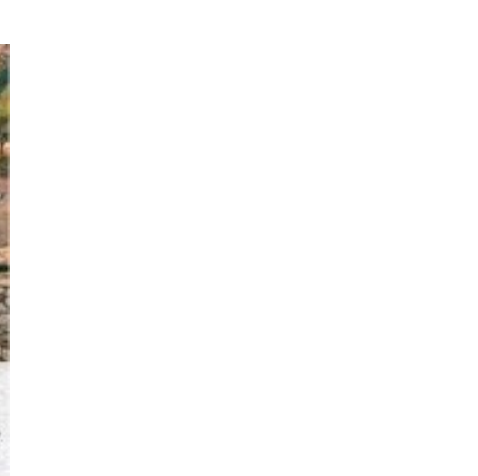
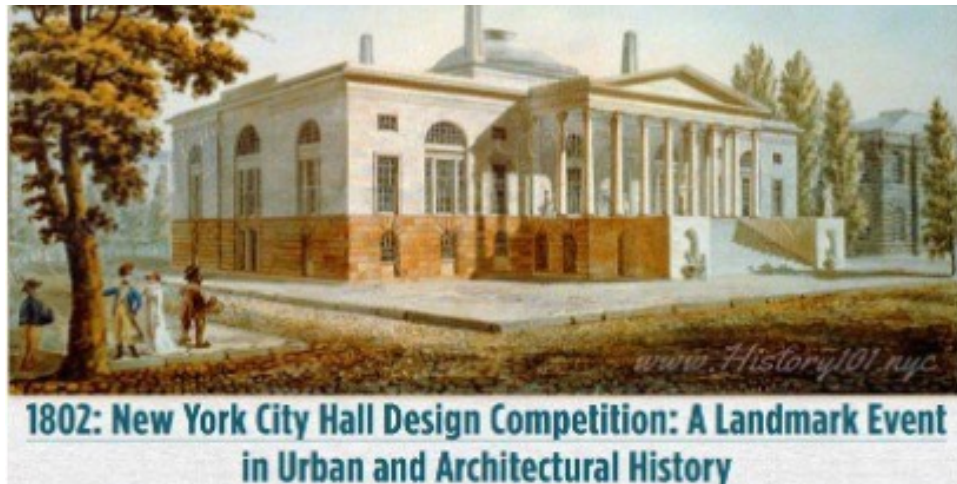
Plan of the City of New York 1735



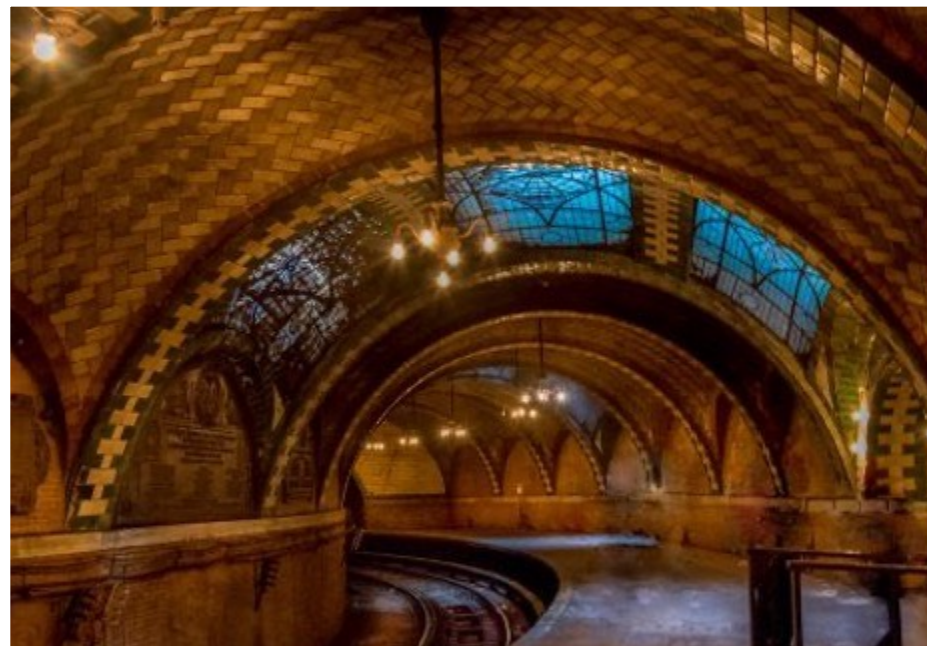
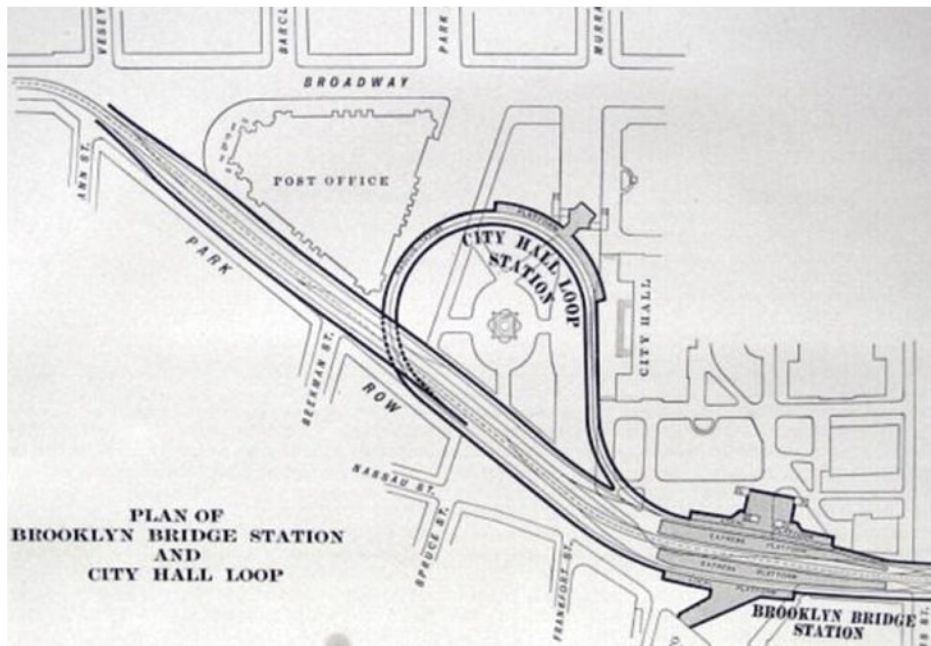
Plan Showing the First Almshouse 1754



CHRONOLOGY OF THE SITE



COMMONS IN THE 1900s



Leopold Eidlitz

John Duncan

William Matin Aiken

Grosvenor Atterbuty

Shree, Lamb & Harmon

Carrera Barricklo

1869

1898

1904

1907 - 1917

1957

1998

VIEW CORRIDOR ANALYSIS



View of Newsstand from Warren Street



View of Newsstand directly across Broadway



View of Newsstand from 250 Broadway Entrance



View of Newsstand from Park Pl

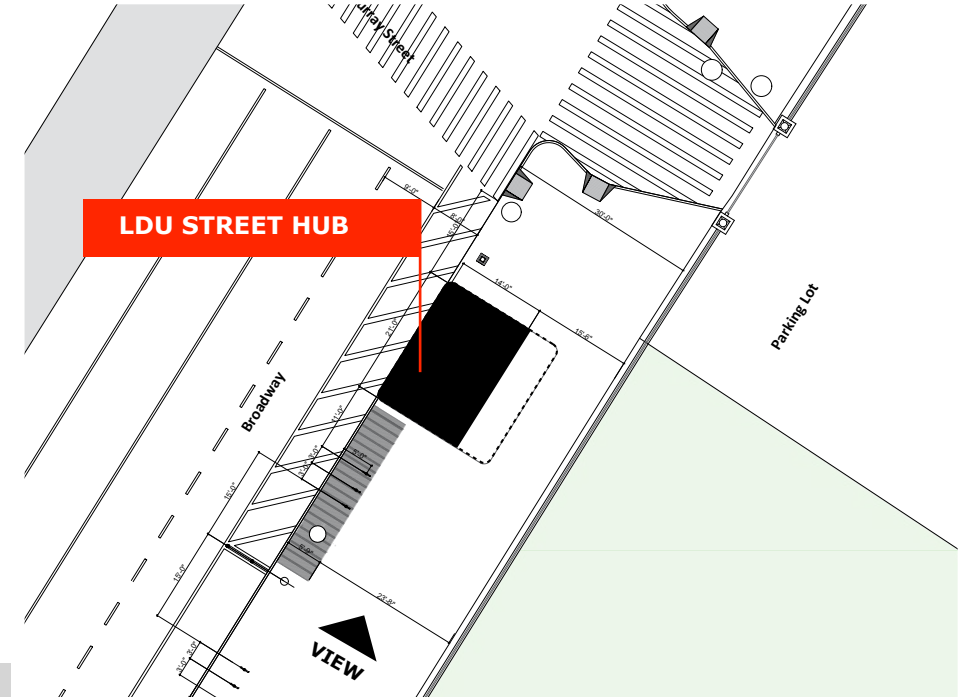
VIEW CORRIDOR ANALYSIS



View from the South on City Hall Sidewalk



View from the South on City Hall Sidewalk



View from the South on City Hall Sidewalk



View from the South on City Hall Sidewalk

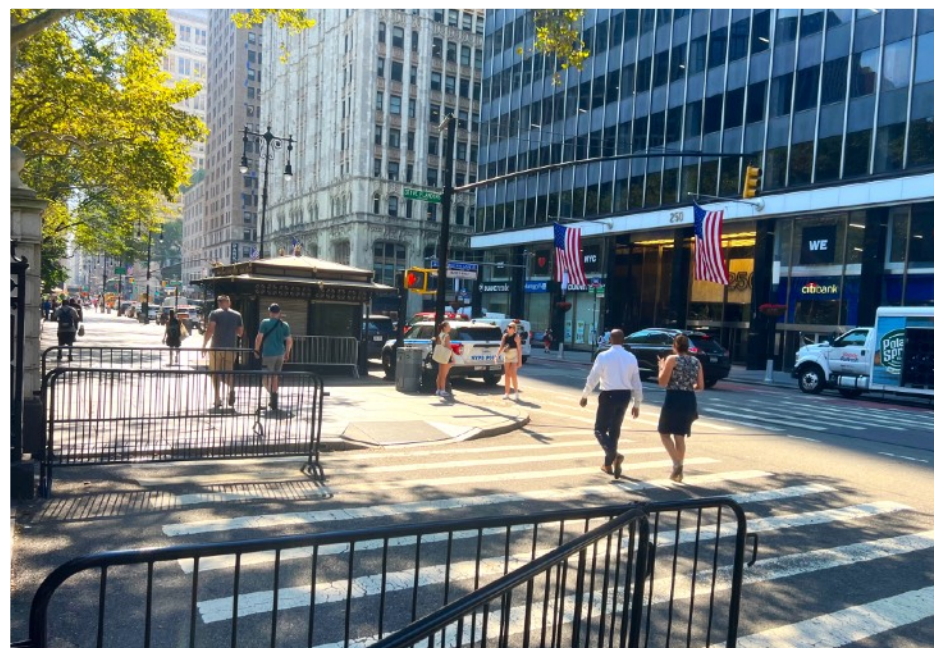
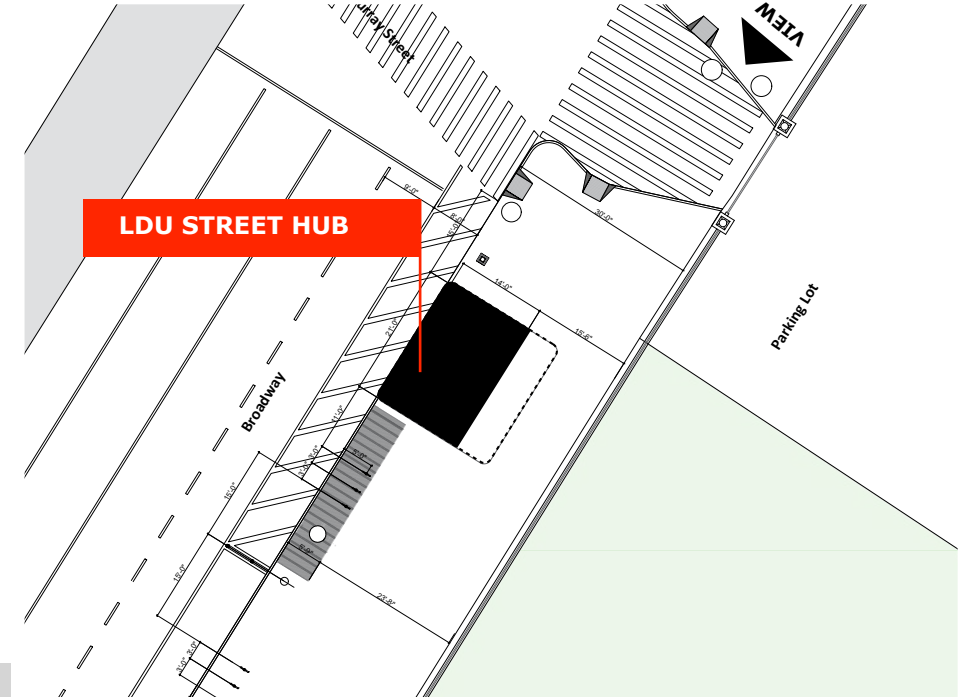
VIEW CORRIDOR ANALYSIS



View from the North on City Hall Sidewalk



View from Murray St Crosswalk



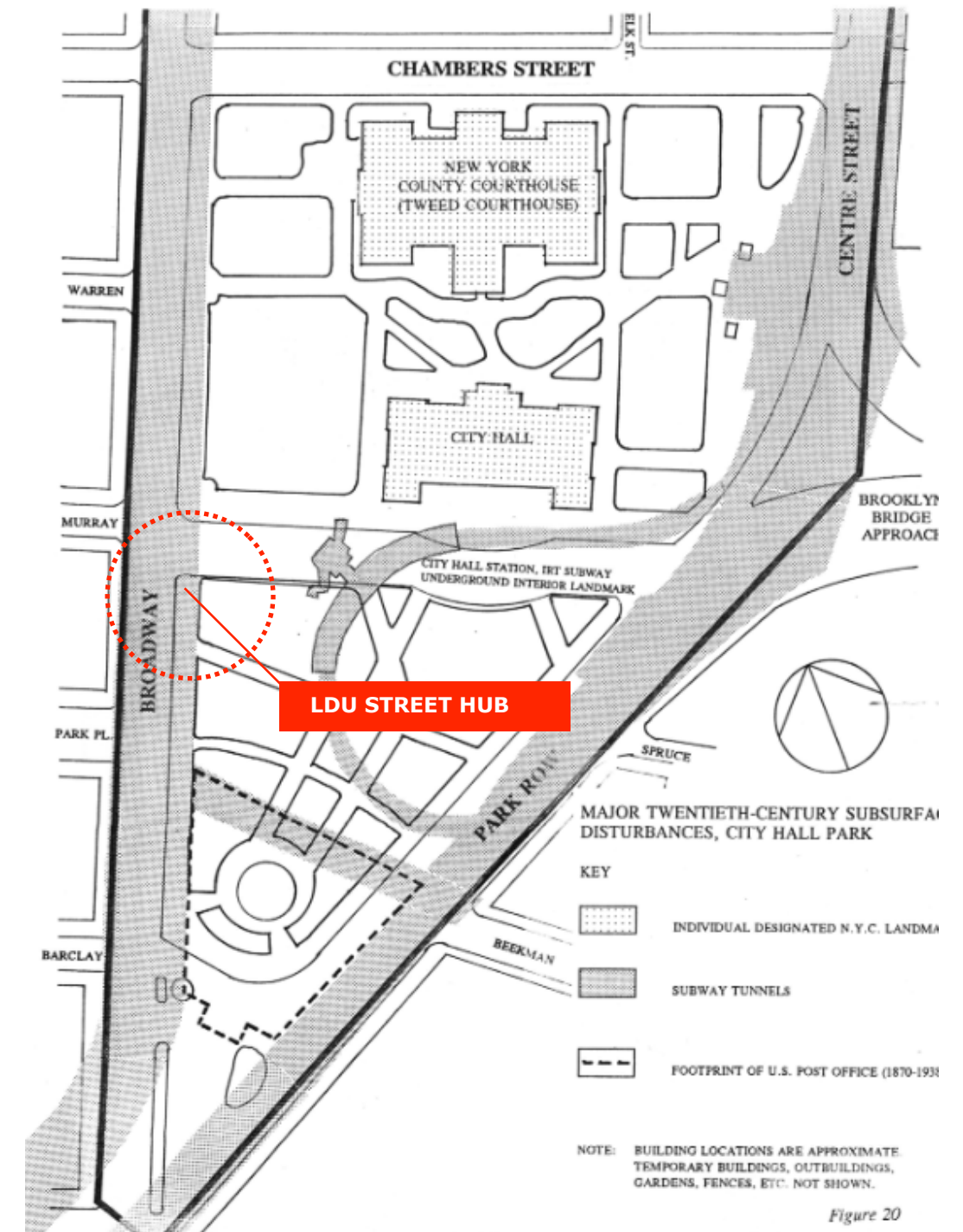
View from the North on City Hall Sidewalk



View from the North on City Hall Sidewalk

GUIDINGS PRINCIPLES

- **RESPECT HISTORY**
SITE'S RICH HISTORY IS REFLECTED IN THE ARCHAEOLOGY INTERVENTIONS (IF ANY) TO HAVE THE LEAST IMPACT OF THE ARCHAEOLOGICAL RESOURCES OF THE SITE
- **PRESERVE/ RESTORE HISTORIC FEATURES AND STRUCTURES**
BLUESTONE SIDEWALK FLAGS TO BE PRESERVED UNFORTUNATELY THE CURRENT NEWSSTAND IS NOT A HISTORIC STRUCTURE, AND THE COST OF ITS RESTORATION IS NOT JUSTIFIABLE
- **NEW INTERVENTIONS WILL BE EASILY IDENTIFIABLE FROM THE HISTORIC**
STEERING AWAY FROM REPLICATING HISTORIC STRUCTURE- CREATES A CONFUSING HISTORY OF THE SITE
- **INTERVENTIONS TO BE REVERSIBLE**
THE INSTALLATION IS VERY EASILY REVERSIBLE AND WILL NOT CAUSE DAMAGE TO ANY HISTORIC FEATURES
- **DESIGN**
TO REFLECT PUBLIC STREET FURNITURE AND MATERIALS OF TODAY
- **DISCREET LOCATION**
NOT OBSCURE OR OBSTRUCT VIEWS OF CITY HALL OR ANY HISTORIC STRUCTURE

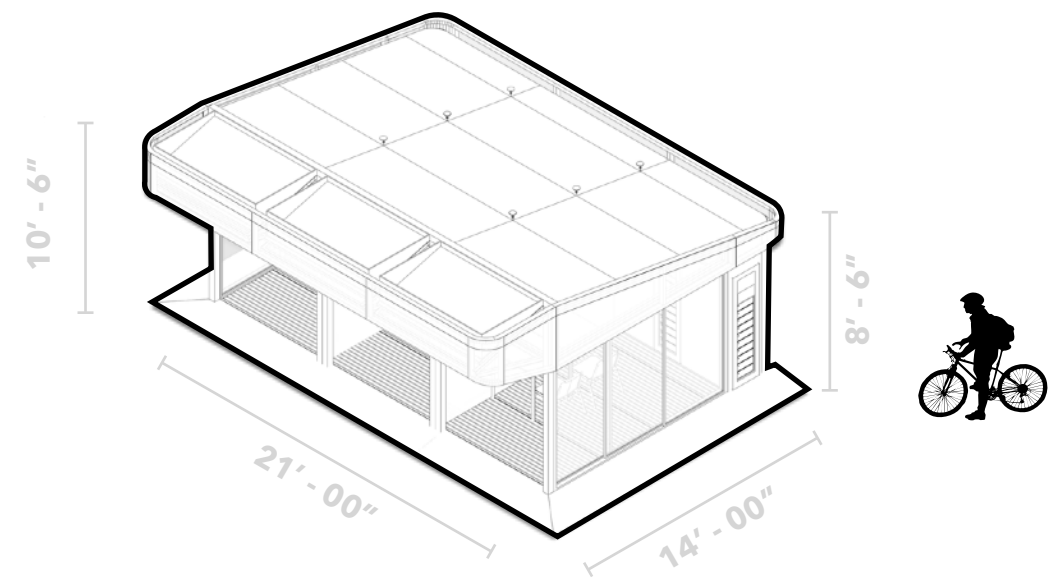
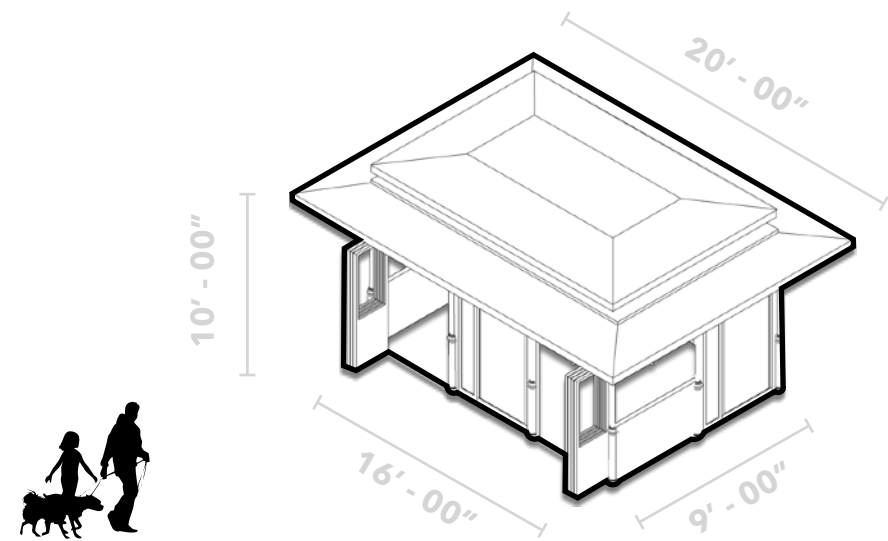


REST

RECHARGE

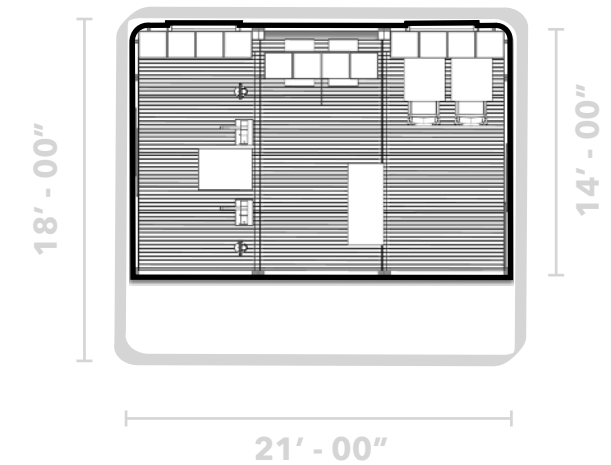
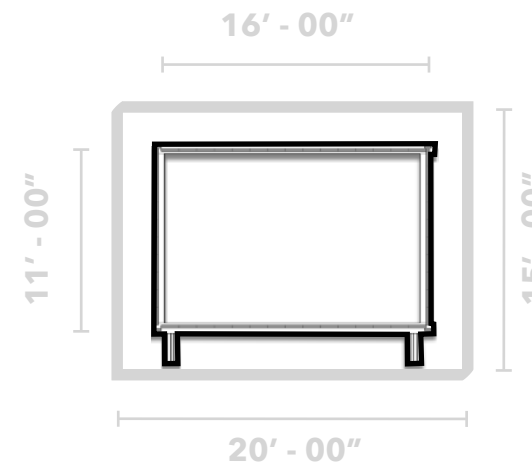
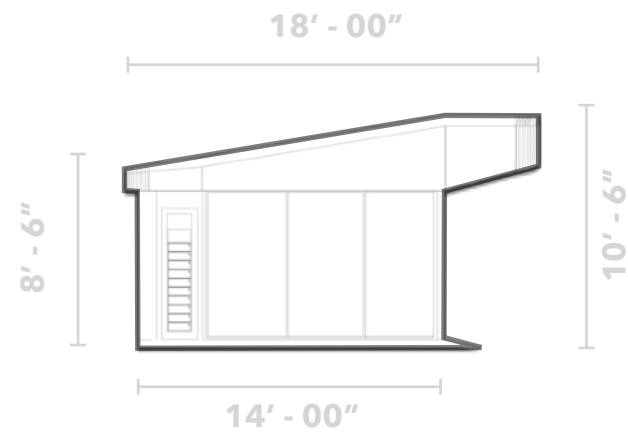
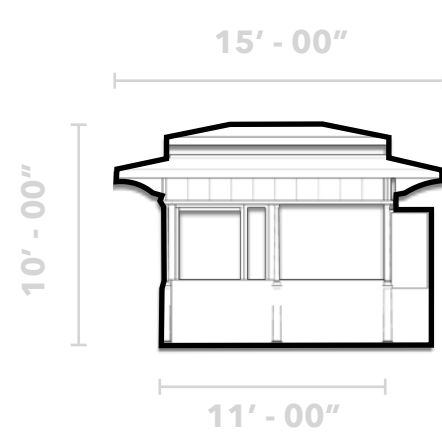
REPAIR

VOLUMETRIC COMPARISON



EXISTING

PROPOSED



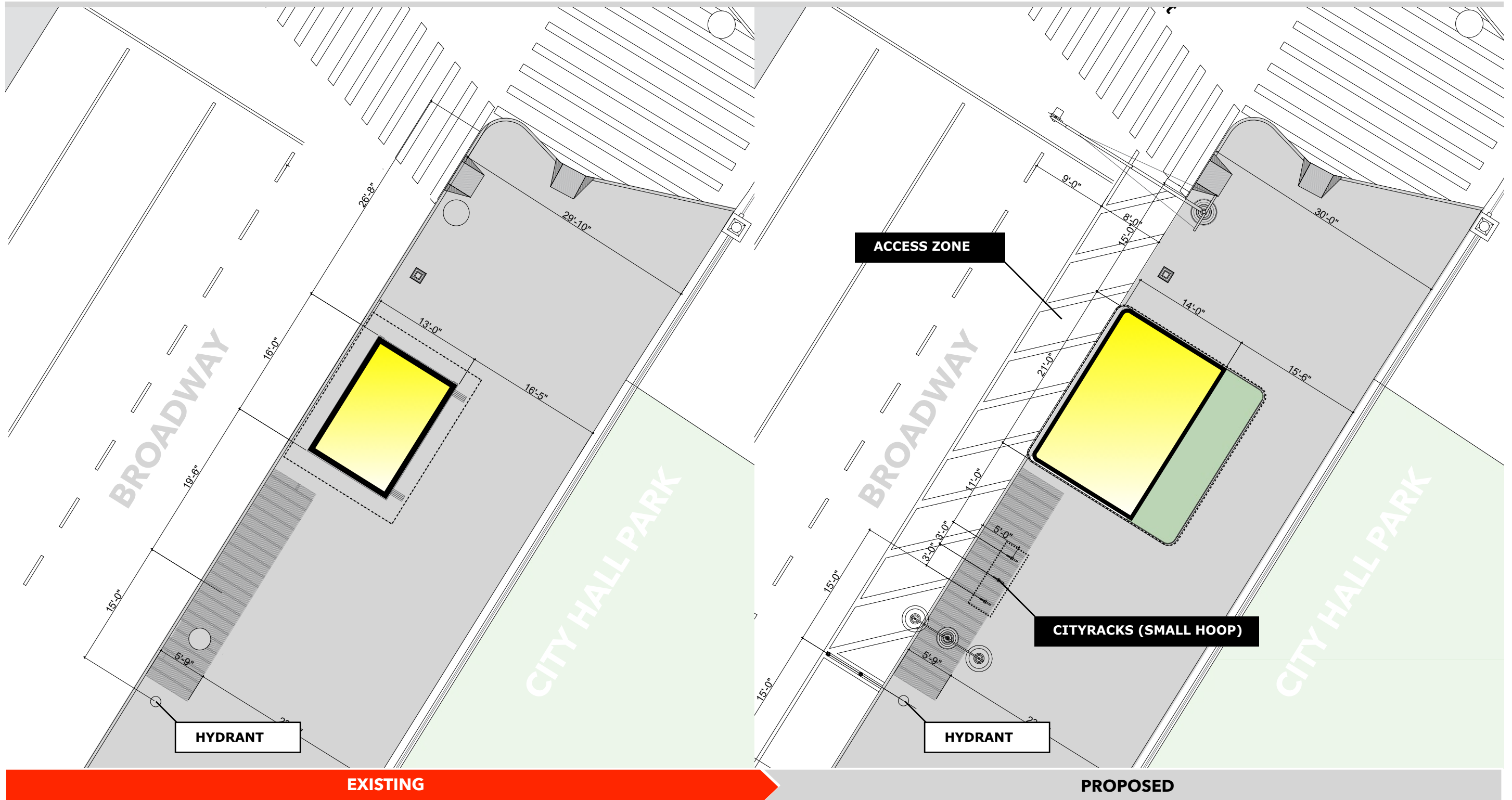
EXISTING

PROPOSED

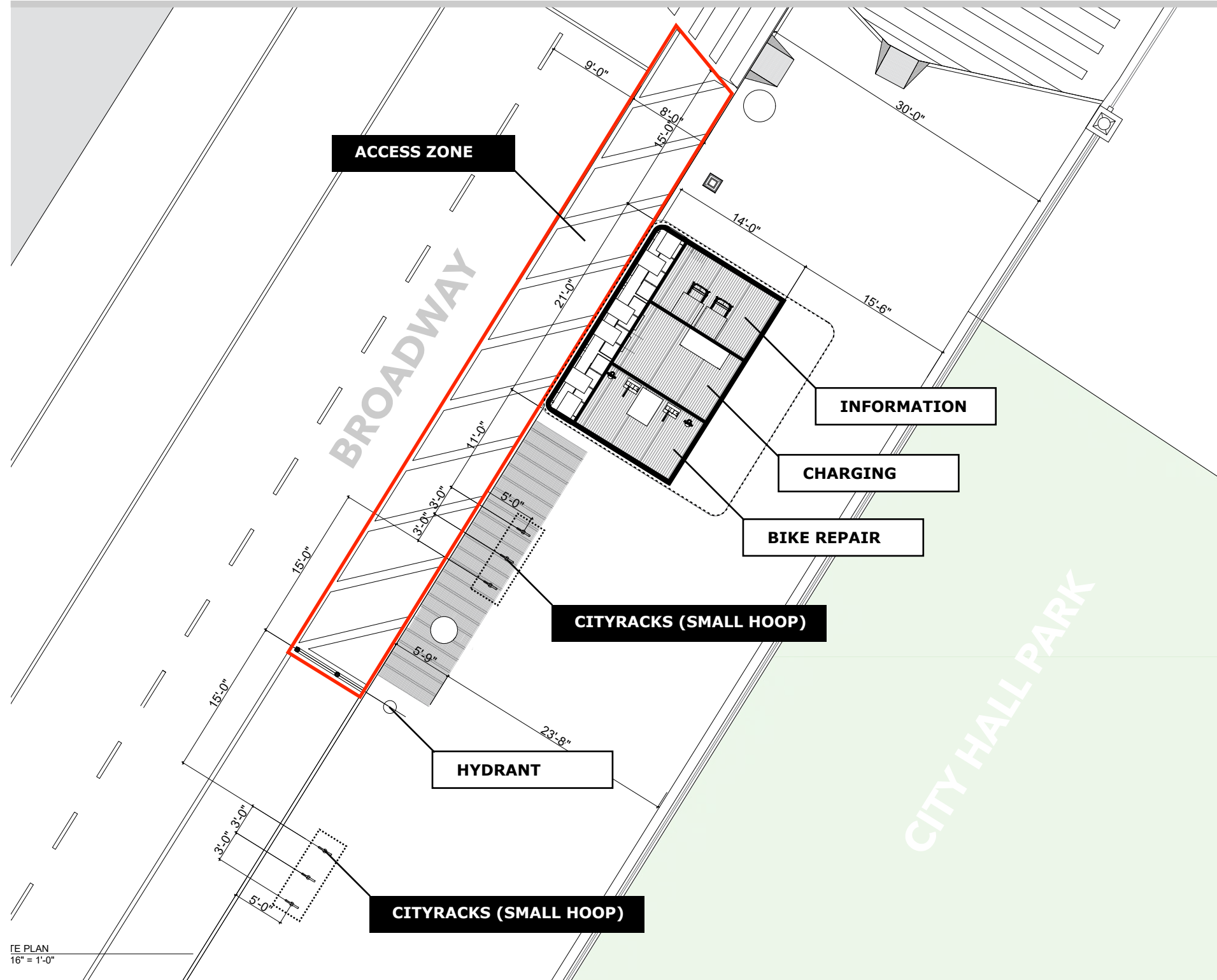
EXISTING

PROPOSED

FOOTPRINT COMPARISON



SITE PLAN

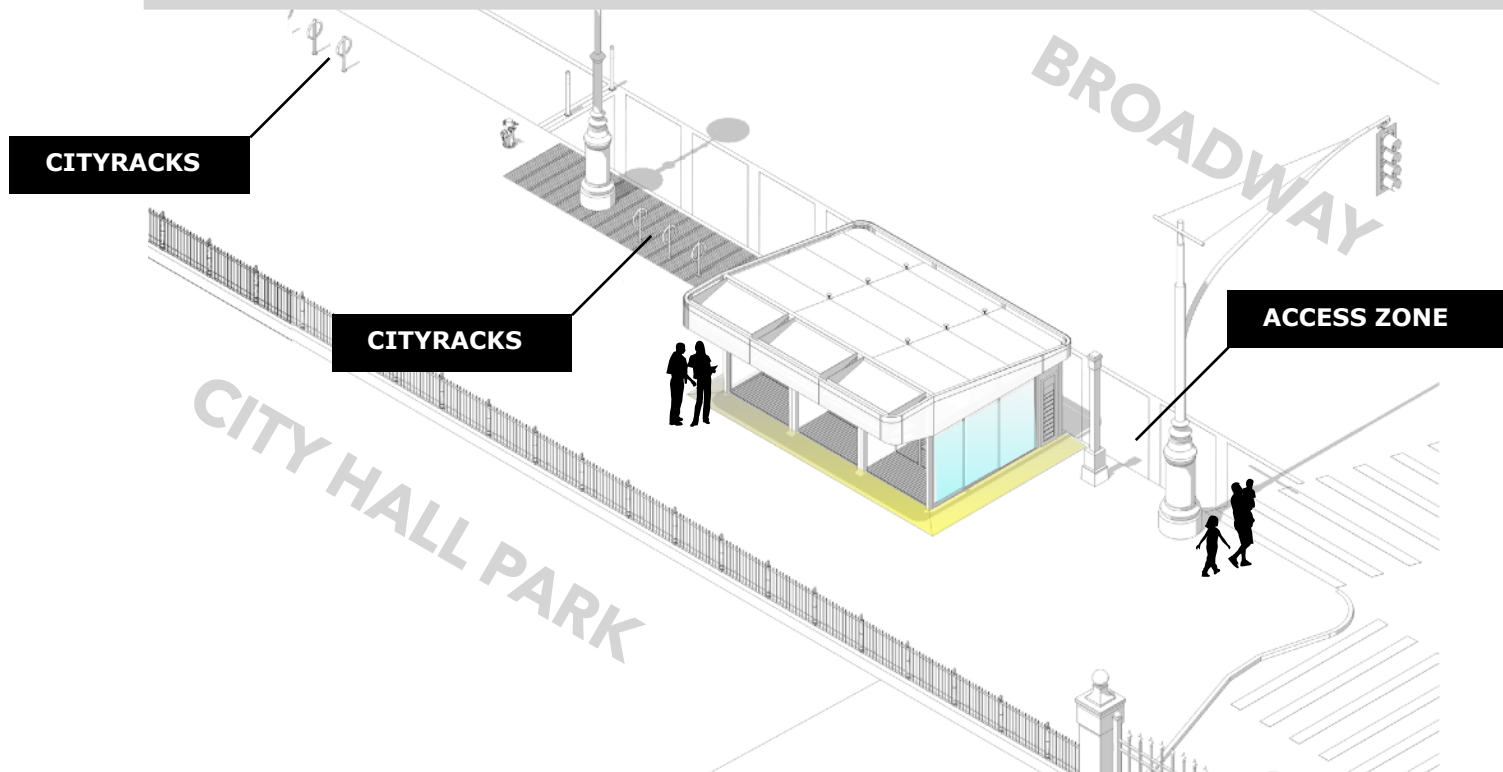


CITYRACK (SMALL HOOP)



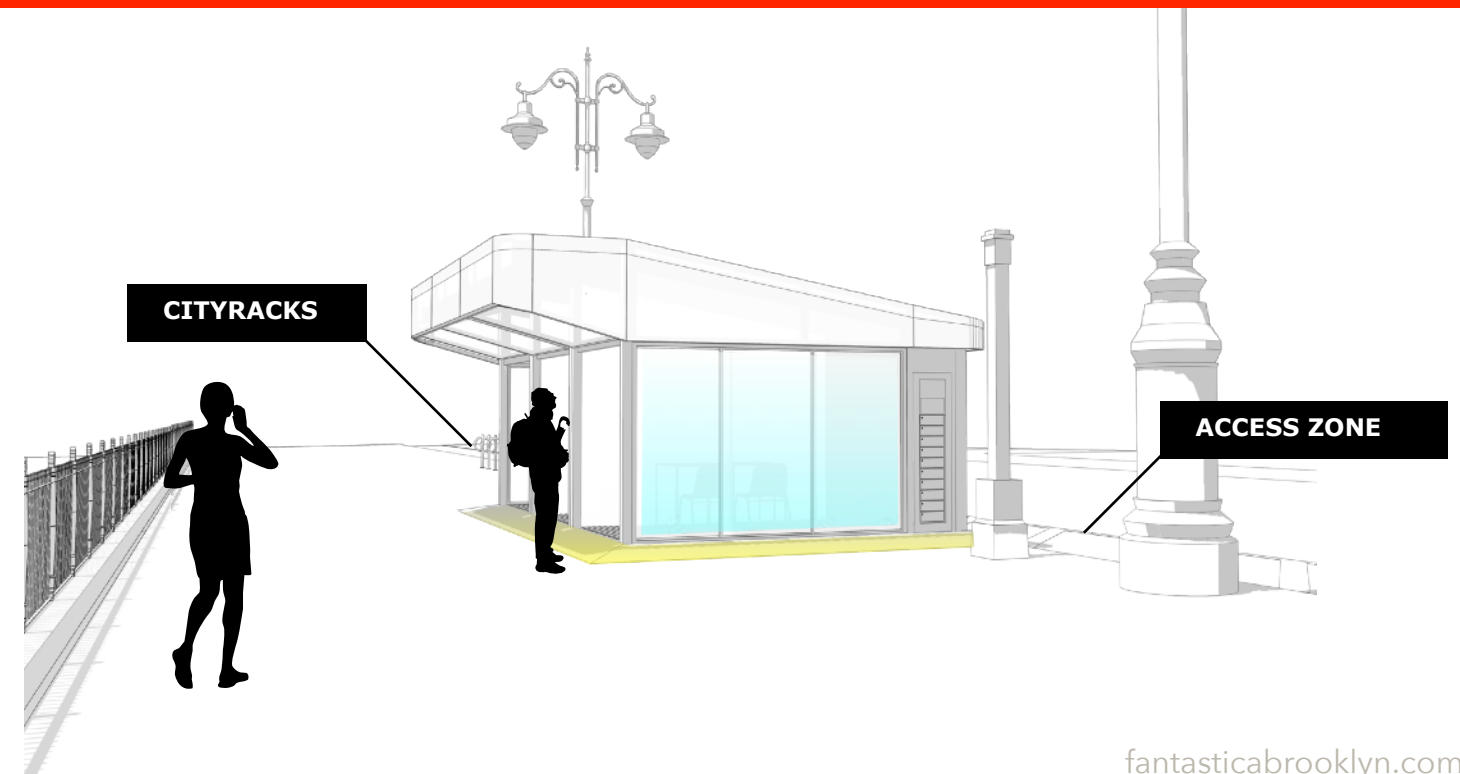
EXISTING CITYRACK ON SITE

VOLUMETRIC ANALYSIS



SOUTH WEST FACADE

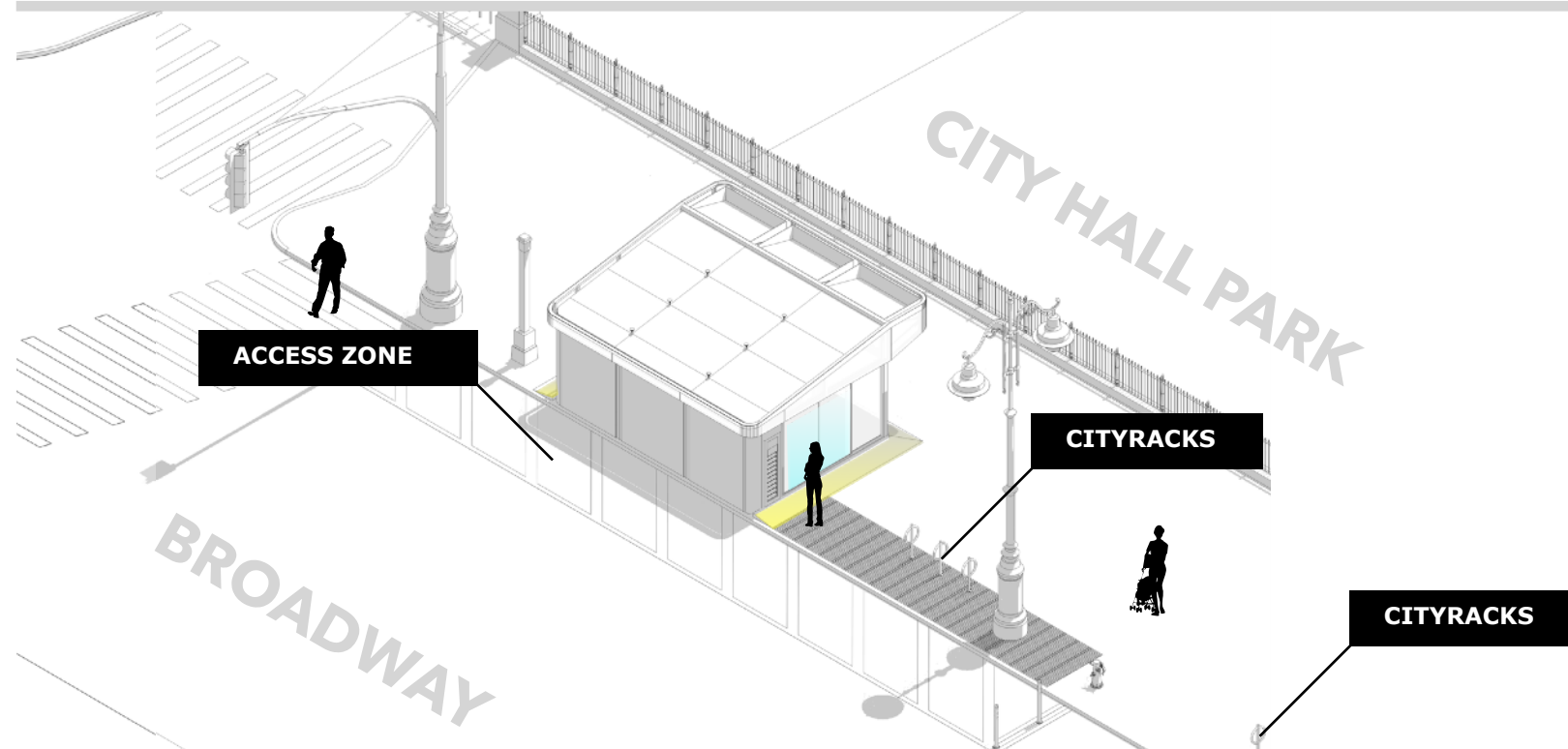
VIEW FROM MURRAY ST



#socialfurniture

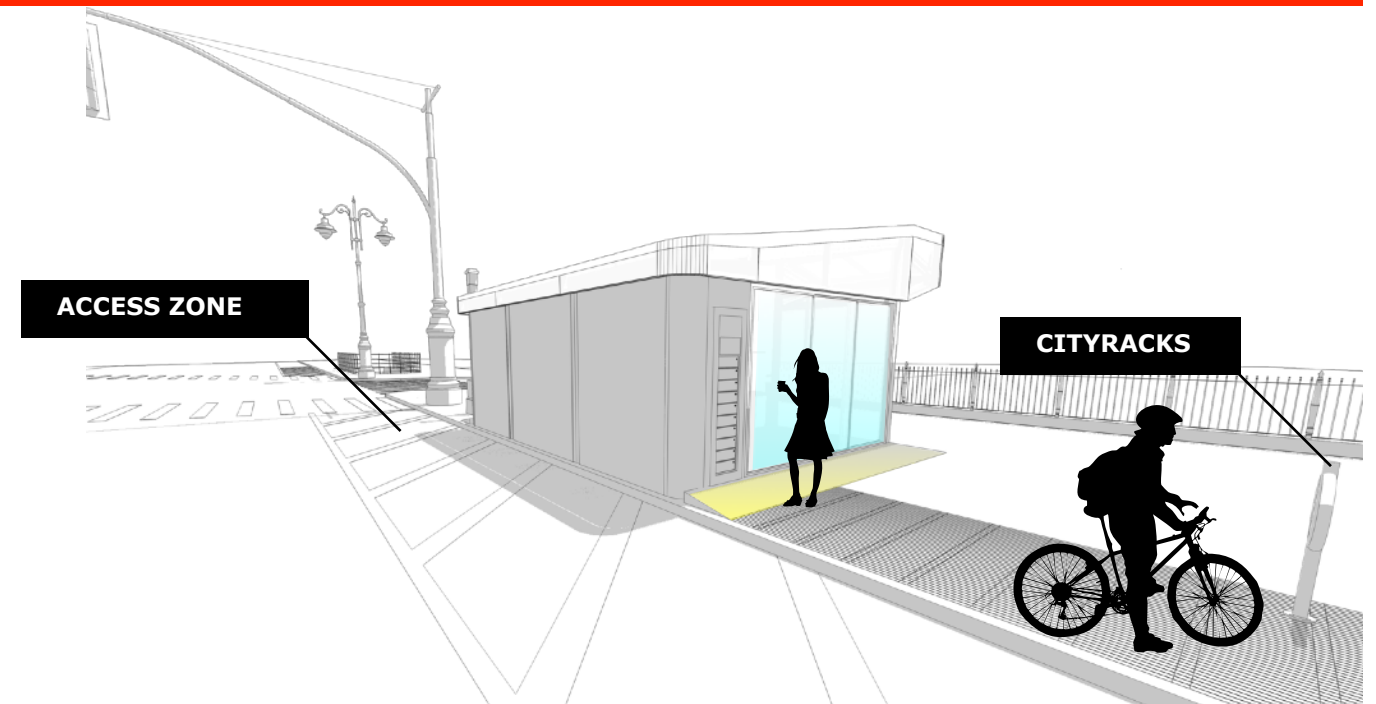
fantasticabrooklyn.com

VOLUMETRIC ANALYSIS



NORTH EAST FACADE

VIEW FROM PARK PL



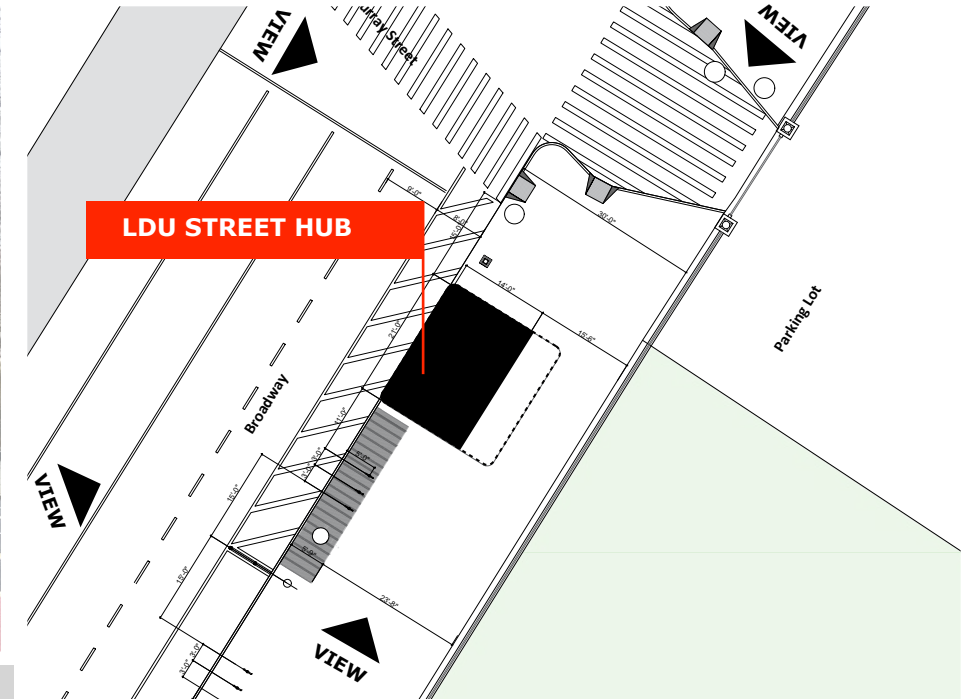
ARCHITECTURAL CONTEXT ANALYSIS



View of Mobility Hub directly across Broadway



View of Mobility Hub from Park Pl



View from the North on City Hall Sidewalk



View from the South on City Hall Sidewalk

MATERIALS + FINISHES

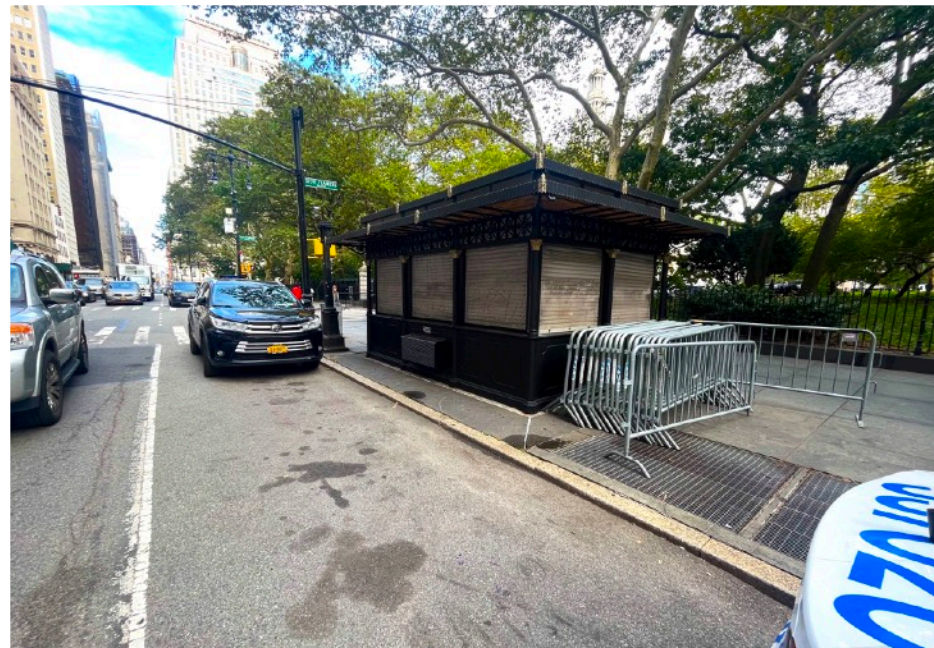


EXISTING



PROPOSED

MATERIALS + FINISHES



EXISTING



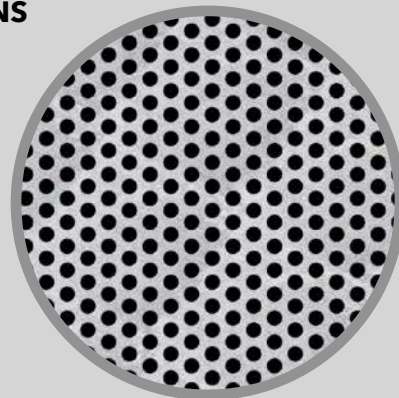
PROPOSED

MATERIALS + FINISHES



CITY HALL PARK SPECIFICATIONS

McNICHOLS® Perforated Metal
 Round, Aluminum, Alloy 3003-H14,
 .0630" Thick (14 Gauge), 1/8" Round
 on 3/16" Staggered Centers, 40%
 Open Area



Environmental Lights, LN-RGB, LN-
 RGA, 12*20mm Dimmable RGB/RGA
 LED Neon Flex Light Strip, 24 Volt



Powder Coated Aluminum 3D Station
 Name Sign Lettering / Dark Bronze
 LED Backlit Back Lighting



REST

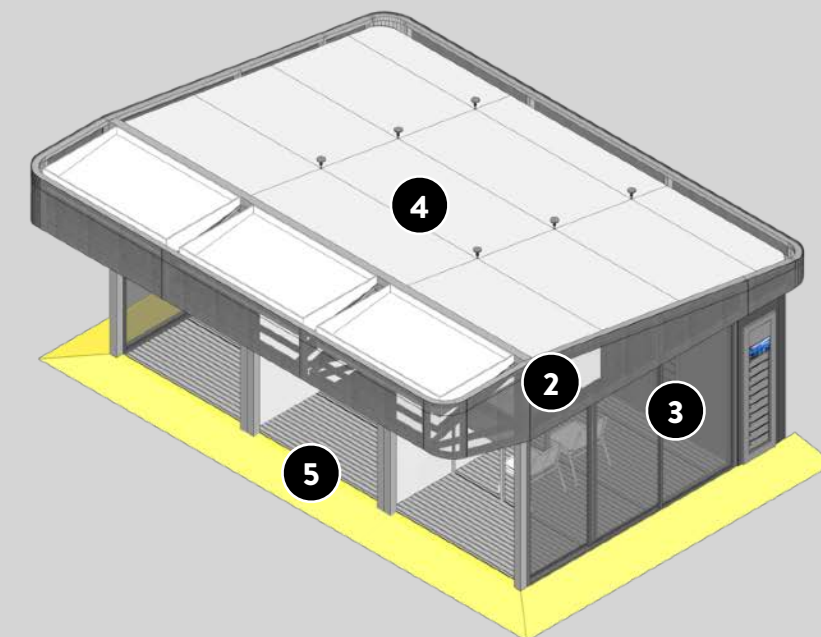
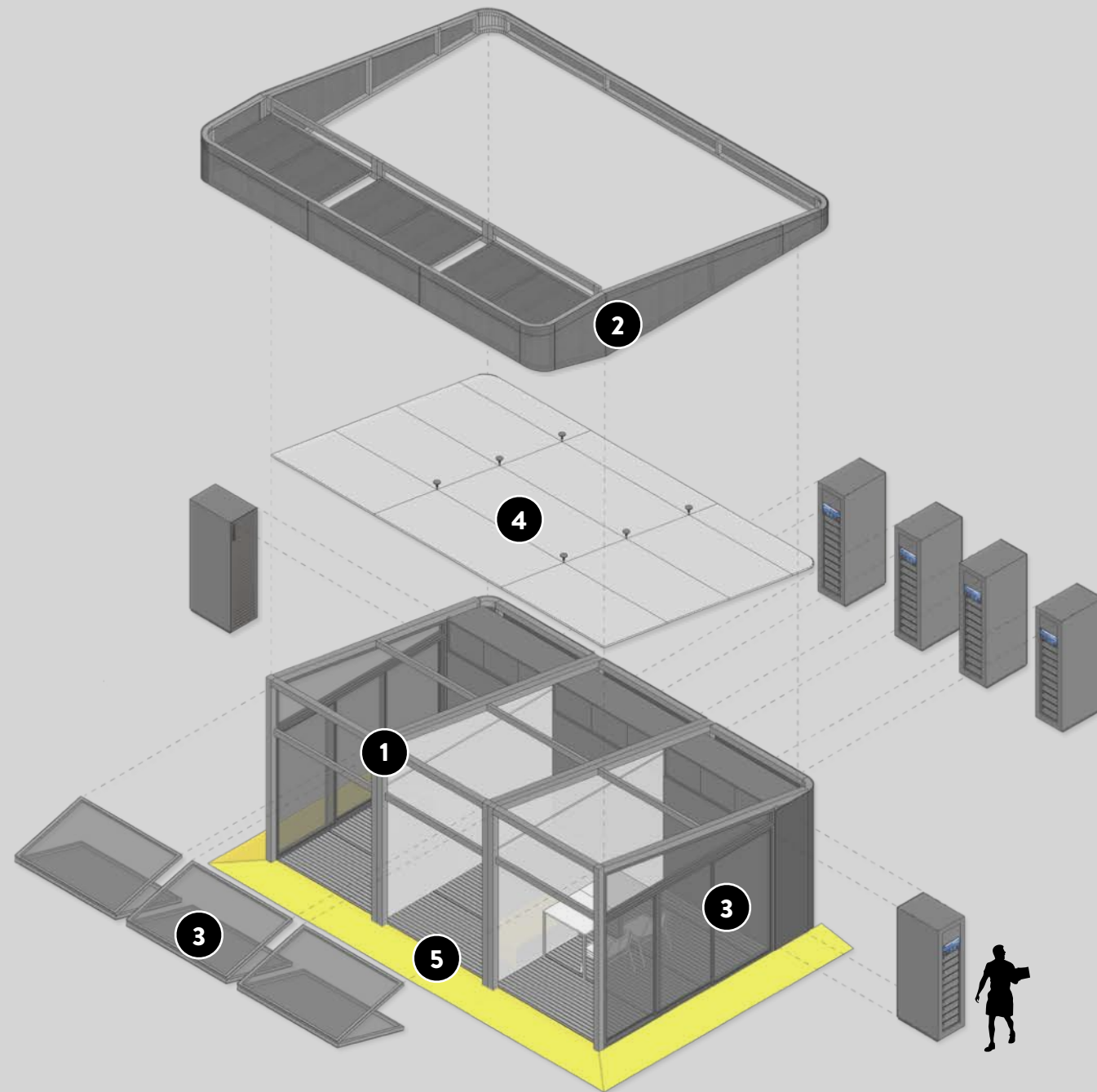
RECHARGE

REPAIR

MATERIALS + FINISHES

CITY HALL PARK SPECIFICATIONS

- 1 Powder Coated Aluminum Frame / Dark Bronze
- 2 Powder Coated Perforated Aluminum Panels / Dark Bronze
- 3 Tempered Glass + Anti-graffiti Film / Clear
- 4 Powder Coated Insulated Aluminum Panels / Matte Black
- 5 Fiberglass Grating w Aluminum Substructure / Dark Gray



REST

RECHARGE

REPAIR

SYSTEMS + FEATURES

BUILT-IN SYSTEMS + FEATURES

- 1 Automatic Tempered Glass Rollup Doors
- 2 Automatic Tempered Glass Sliding Doors
- 3 Access Control Panel
- 4 Oonee Power Charging Cabinets
- 5 HVAC System / Cooling + Heating
- 6 RGB LED Lights (Interior + Exterior)
- 7 Raised Leveling Platform + ADA Ramp
- 8 Rollup Door Mechanical Hardware

OPTIONAL SYSTEMS + FEATURES

- 9 Modular Green Roof
- 10 Solar Panels
- 11 Rainwater Catchment System
- 12 Irrigation Tank

POWERED BY

REST

RECHARGE

REPAIR

MATERIALS + FINISHES



EXISTING



PROPOSED

April 16, 2024
Public Hearing

The current proposal is:

Preservation Department – Item 7, LPC-24-06401

City Hall Park – Individual Landmark Borough of Manhattan

To testify virtually, please join Zoom

Webinar ID: 870 9410 2125

Passcode: 613401

By Phone: 1 646-558-8656 US (New
York) 877-853-5257 (Toll free) US
888 475 4499 (Toll free)

Note: If you want to testify virtually on an item, join the Zoom webinar at the agenda's "Be Here by" time (about an hour in advance). When the Chair indicates it's time to testify, "raise your hand" via the Zoom app if you want to speak (*9 on the phone). Those who signed up in advance will be called first.