



NYC Department of Homeless Services

Homeless Outreach Population Survey Results

March 27, 2003

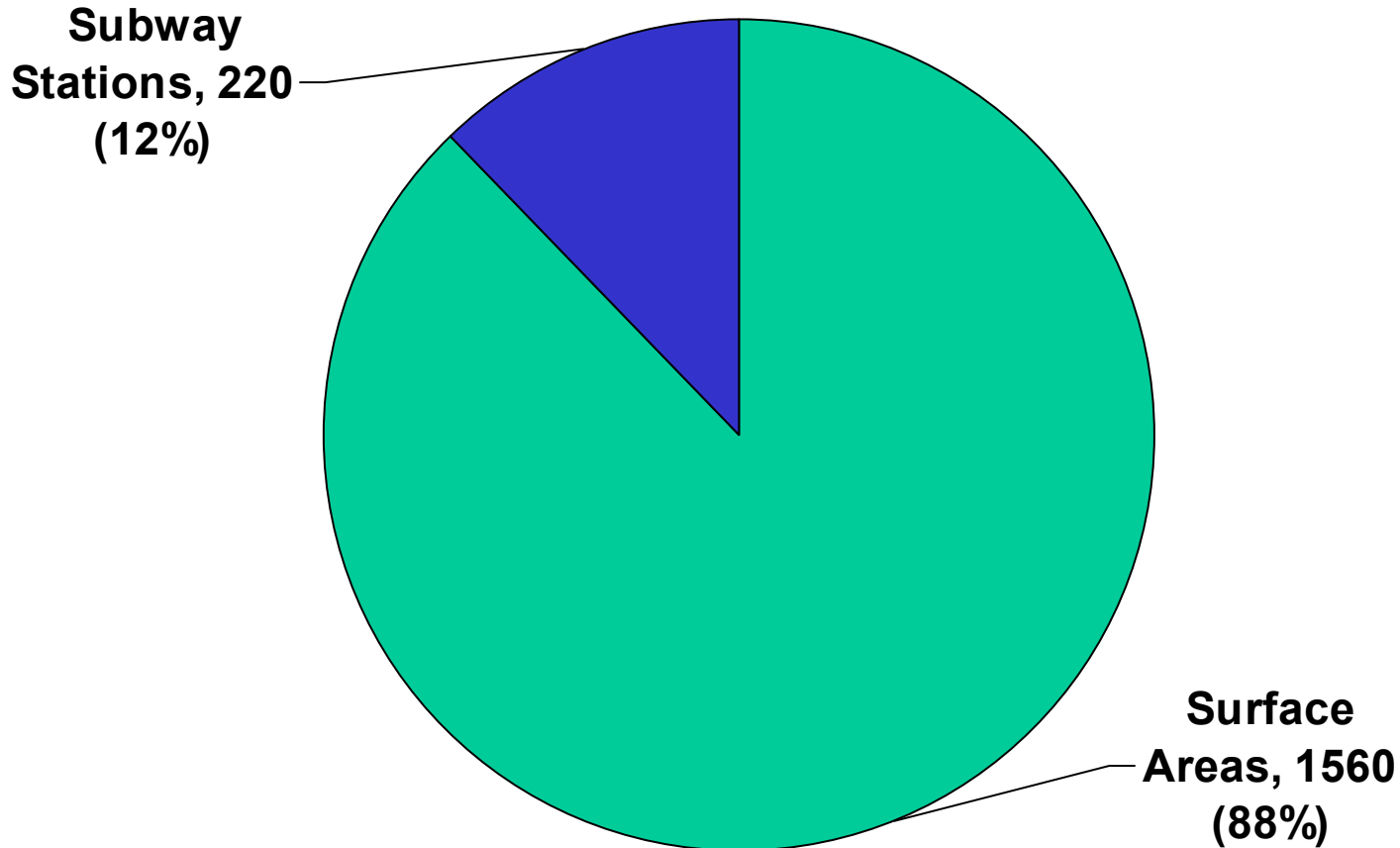
Objective of the Homeless Outreach Population Survey

- Obtain a point-in-time estimate of the unsheltered homeless population in Manhattan.
- Set a benchmark against which the effects of future policy changes can be measured.

Key Findings

- **1,780 unsheltered homeless individuals are estimated to be on the streets and in parks and subway stations in Manhattan.** Subway cars, subway tunnels, private establishments, and abandoned buildings are not included in the survey.
- **The majority of unsheltered homeless individuals in Manhattan are dispersed throughout the borough, not concentrated in a few key areas.**
- **Most homeless single adults in Manhattan are receiving shelter or related services; those remaining outside are likely to be chronically street homeless or severely service-resistant.**
- **No homeless families with children were encountered on the streets or in other public places in Manhattan.**

Distribution of the 1,780 Unsheltered Homeless Individuals in Manhattan



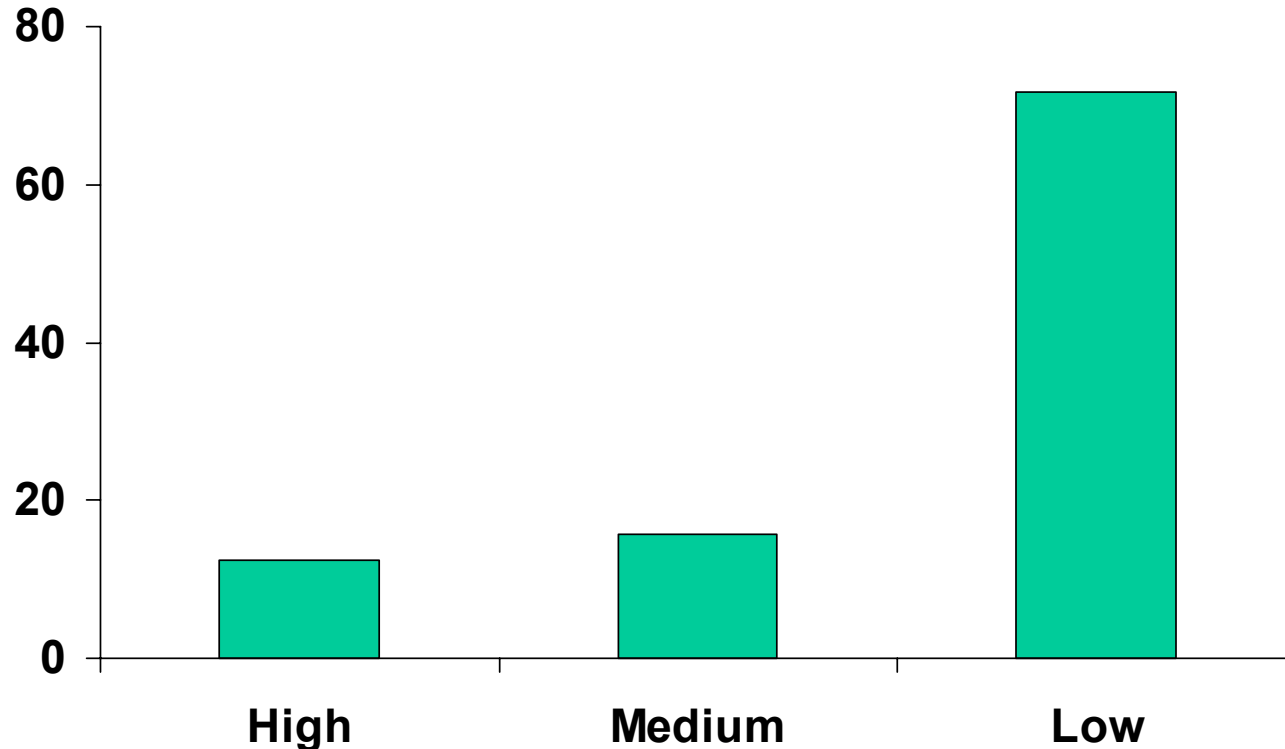
Note: Surface area and subway station numbers are extrapolated using the number of unsheltered homeless individuals encountered. These estimates are not inclusive of all unsheltered homeless individuals in Manhattan. The survey excluded subway cars, subway tunnels, private establishments, and abandoned buildings.



Surface Areas

Density	High	Medium	Low	Total
Total areas	54	139	706	899
Number of areas covered	54	69	70	193
Percentage of areas covered	100%	49.6%	9.9%	21.5%
Total number of individuals encountered	194	122	111	427
Average Number of individuals encountered per area	3.6	1.8	1.6	2.2
Total number of individuals estimated	194	246	1120	1560

Estimated Percentage of Unsheltered Homeless Individuals in Surface Study Areas



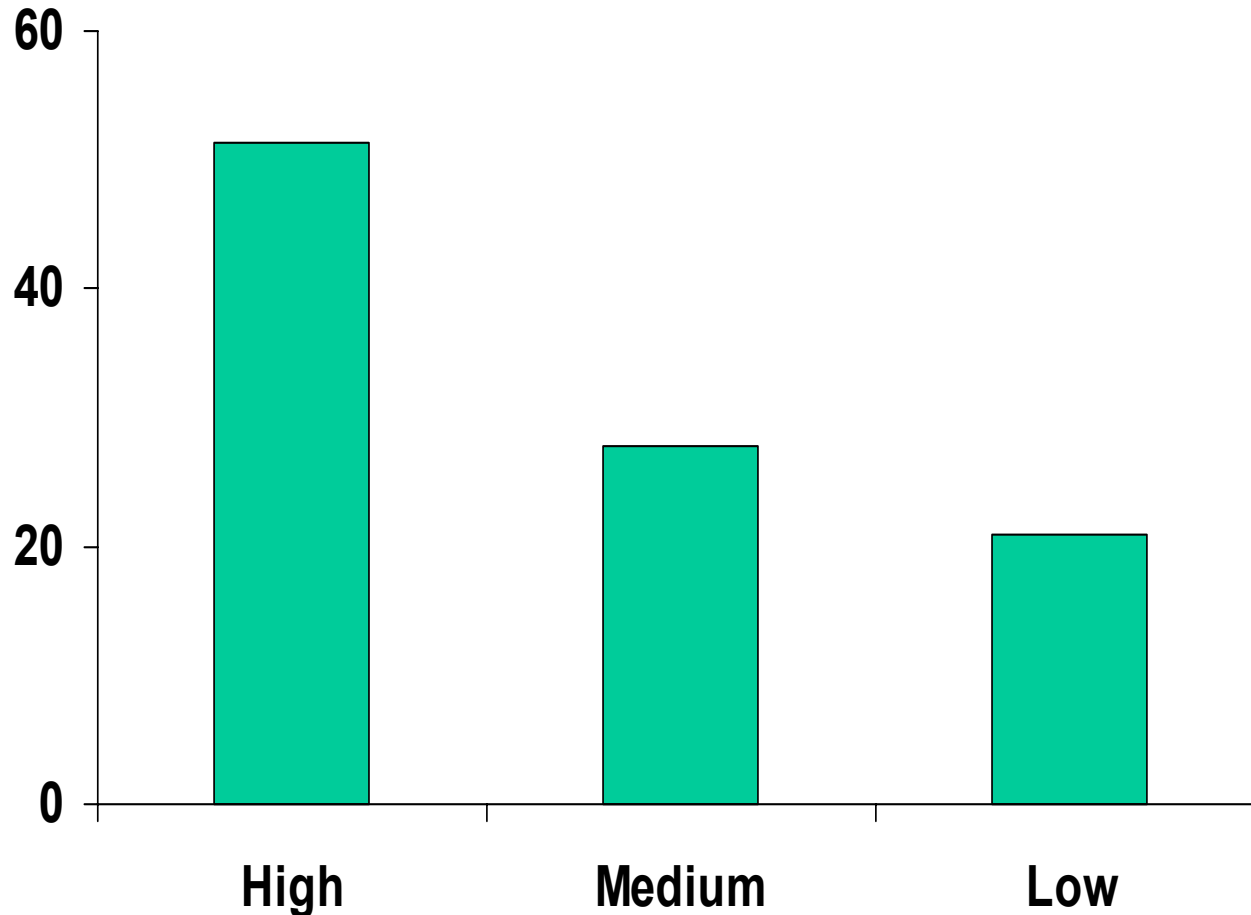
- The majority of unsheltered homeless individuals above ground in Manhattan are dispersed throughout the borough, not concentrated in a few key areas.



Subway Stations

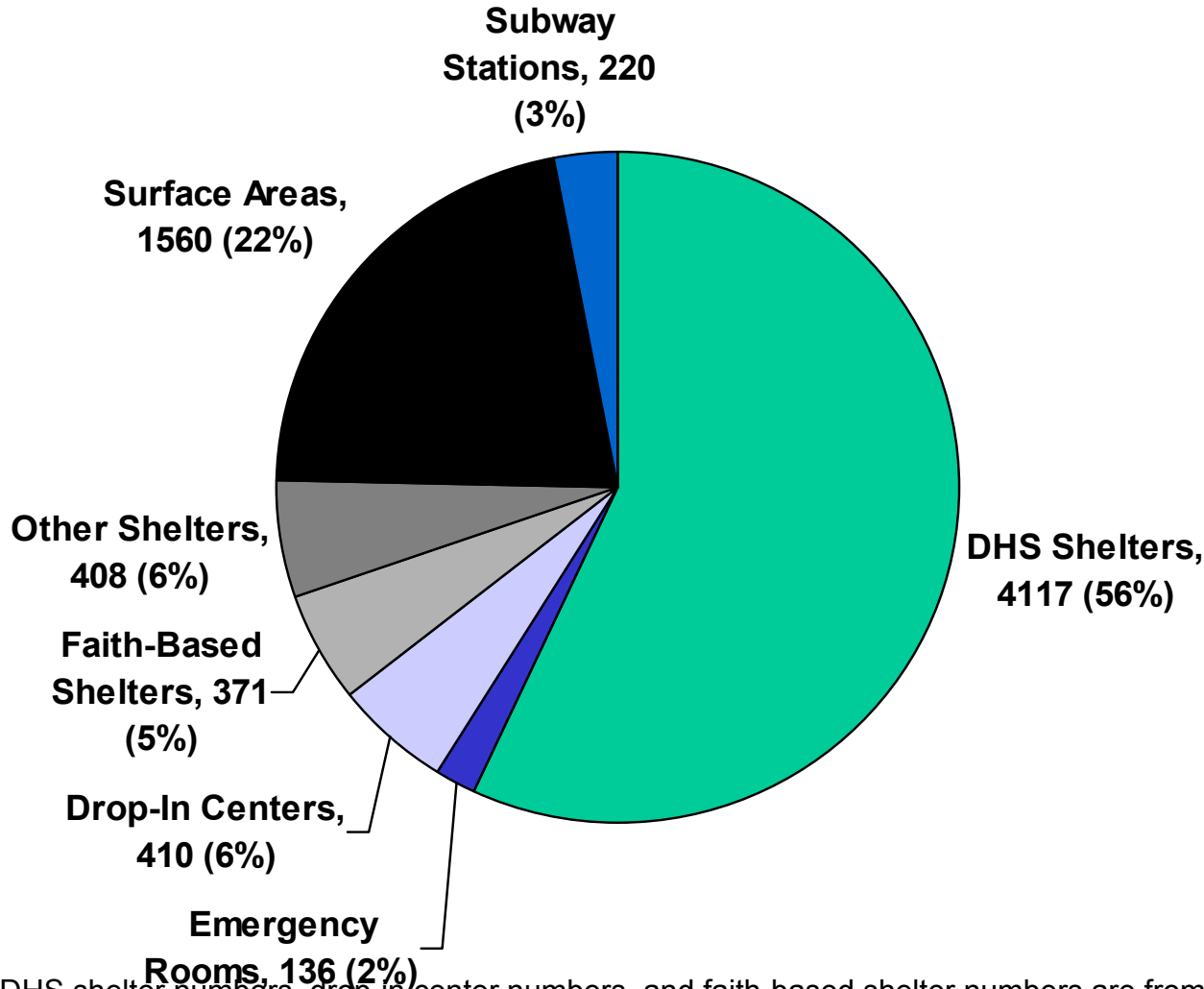
Density	High	Medium	Low	Total
Total stations	29	31	83	143
Number of stations covered	29	25	9	63
Percentage of stations covered	100%	80.7%	10.8%	44.1%
Total number of individuals encountered	113	49	5	167
Average number of individuals encountered per station	3.8	2.0	0.6	2.7
Total number of individuals estimated	113	61	46	220

Estimated Percentage of Unsheltered Homeless Individuals in Subway Stations



- In contrast to the above-ground distribution, unsheltered homeless individuals in subway stations are more likely to be concentrated in a few stations.

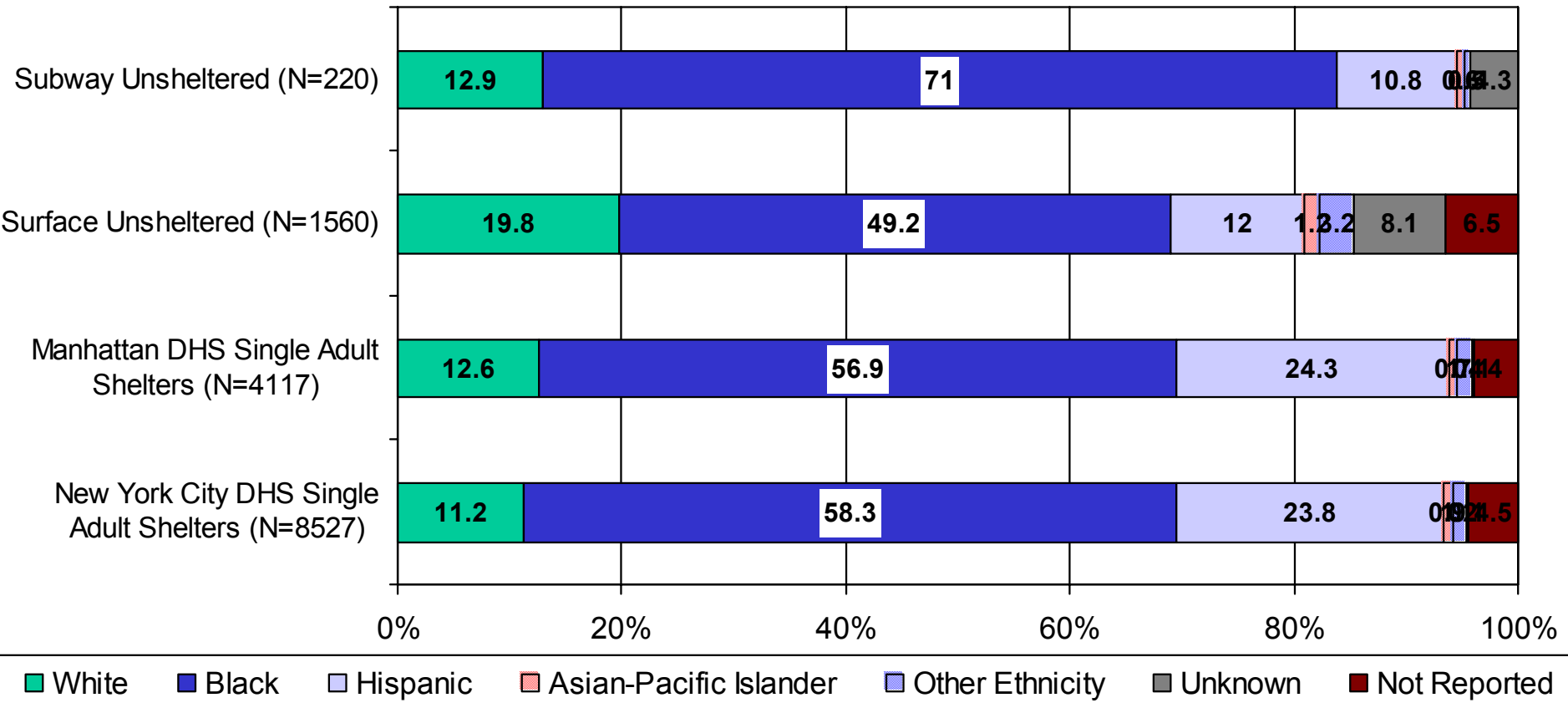
Distribution of 7,222 Sheltered and Unsheltered Homeless Individuals in Manhattan



- For every one unsheltered homeless individual in Manhattan, there are 3 single adults receiving shelter or drop-in services.

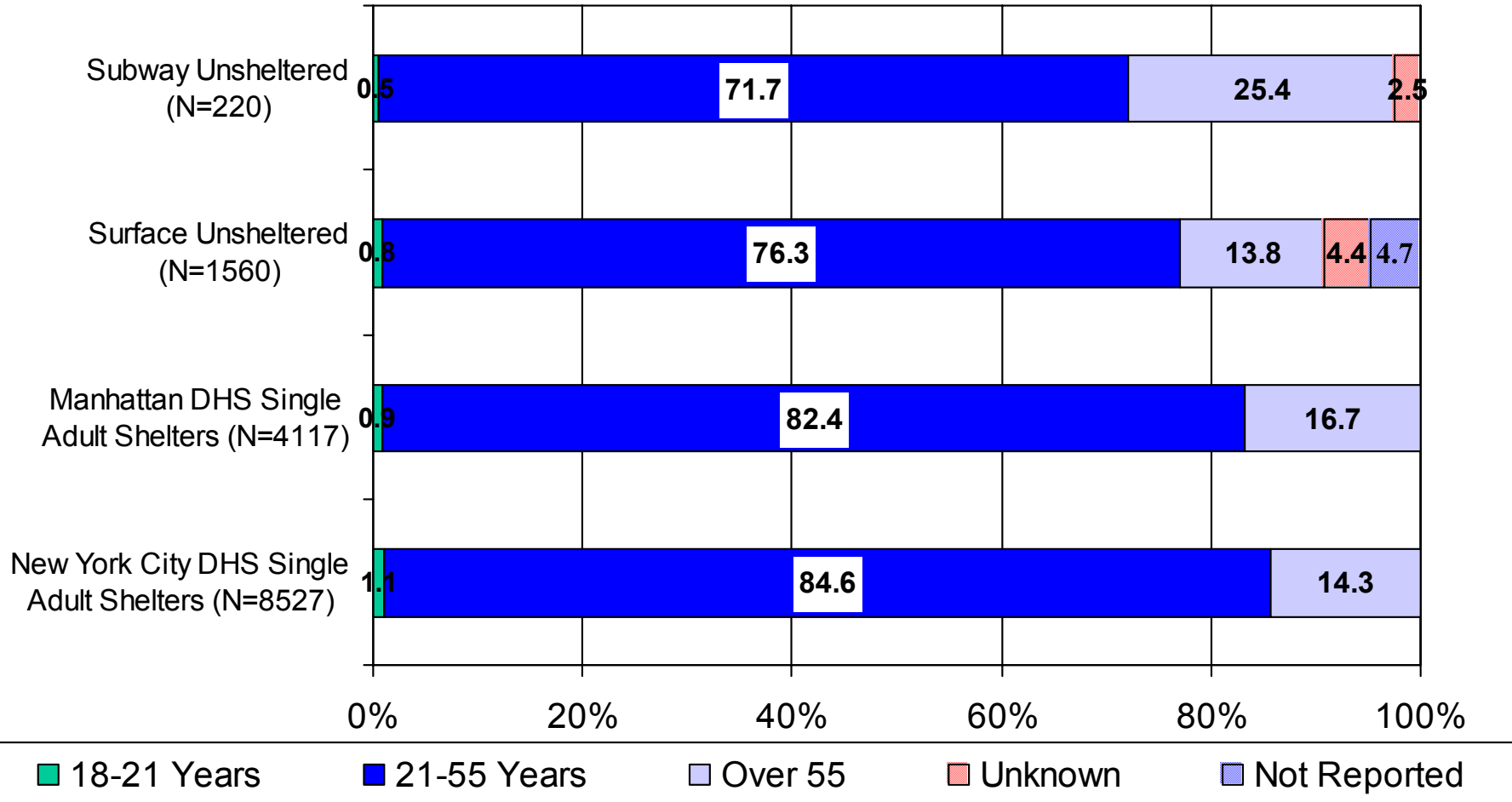
Note: DHS shelter numbers, drop-in center numbers, and faith-based shelter numbers are from the DHS adult daily census on the night of February 24, 2003. The numbers from some emergency rooms and non-DHS shelters are estimates. Data was available from 16 of 17 emergency rooms. Data from the Veteran's Hospital Emergency Room was not available.

Distribution by Ethnicity/Race of Unsheltered and Sheltered Homeless Individuals



- The proportion of African American unsheltered homeless individuals in surface study areas and DHS single adult shelters is significantly lower than in subway stations.
- The proportion of Hispanic homeless individuals in DHS single adult shelters is significantly higher than on the streets and in subway stations.
- The proportion of White unsheltered homeless individuals in surface study areas is significantly higher than in subway stations and DHS single adult shelters.

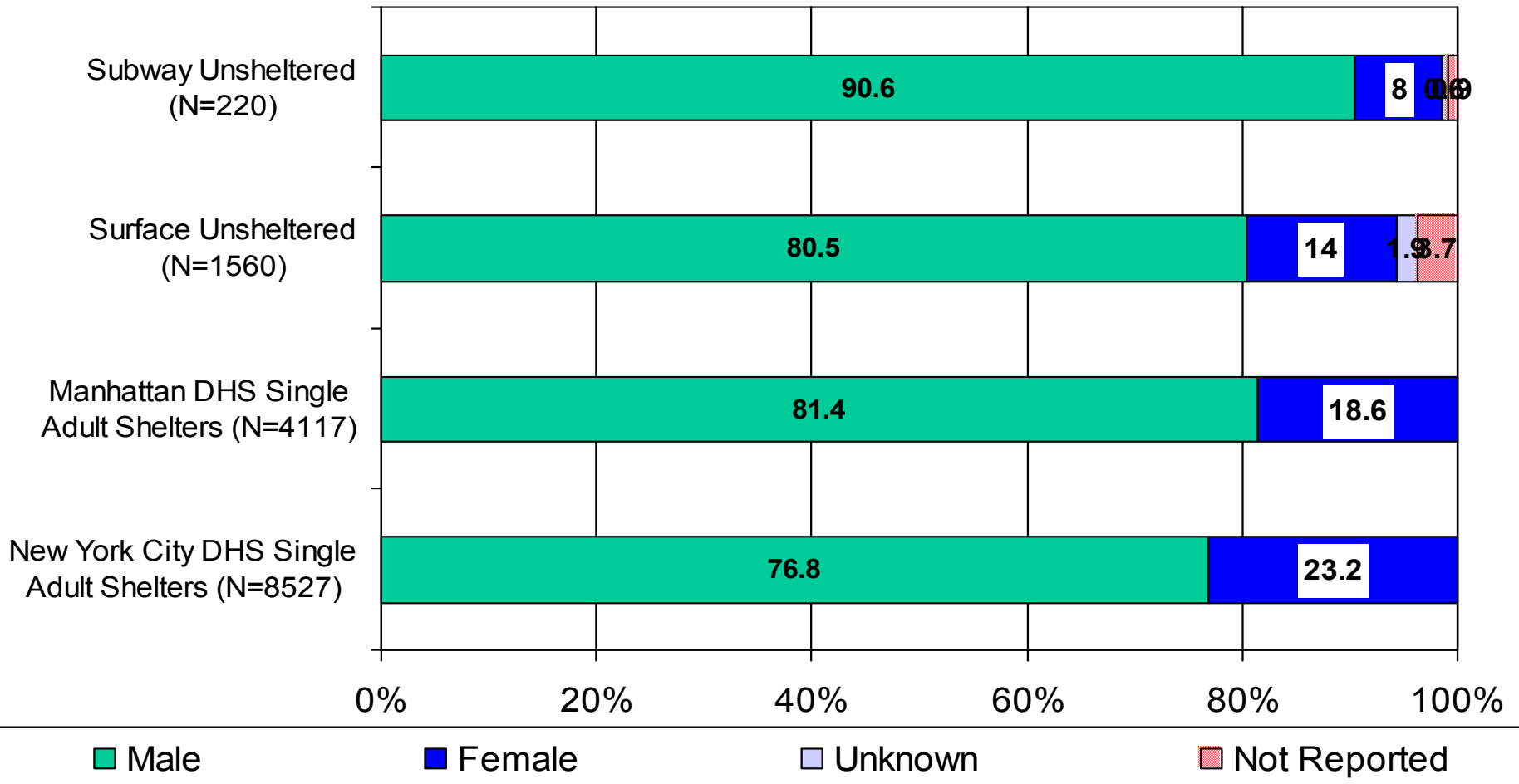
Distribution by Age of Unsheltered and Sheltered Homeless Individuals



- An estimated 271 unsheltered homeless individuals in Manhattan appear to be above 55 years old.
- One out of four unsheltered homeless individuals in subway stations appears to be above 55 years old. This proportion is significantly higher than in surface study areas and DHS single adult shelters.

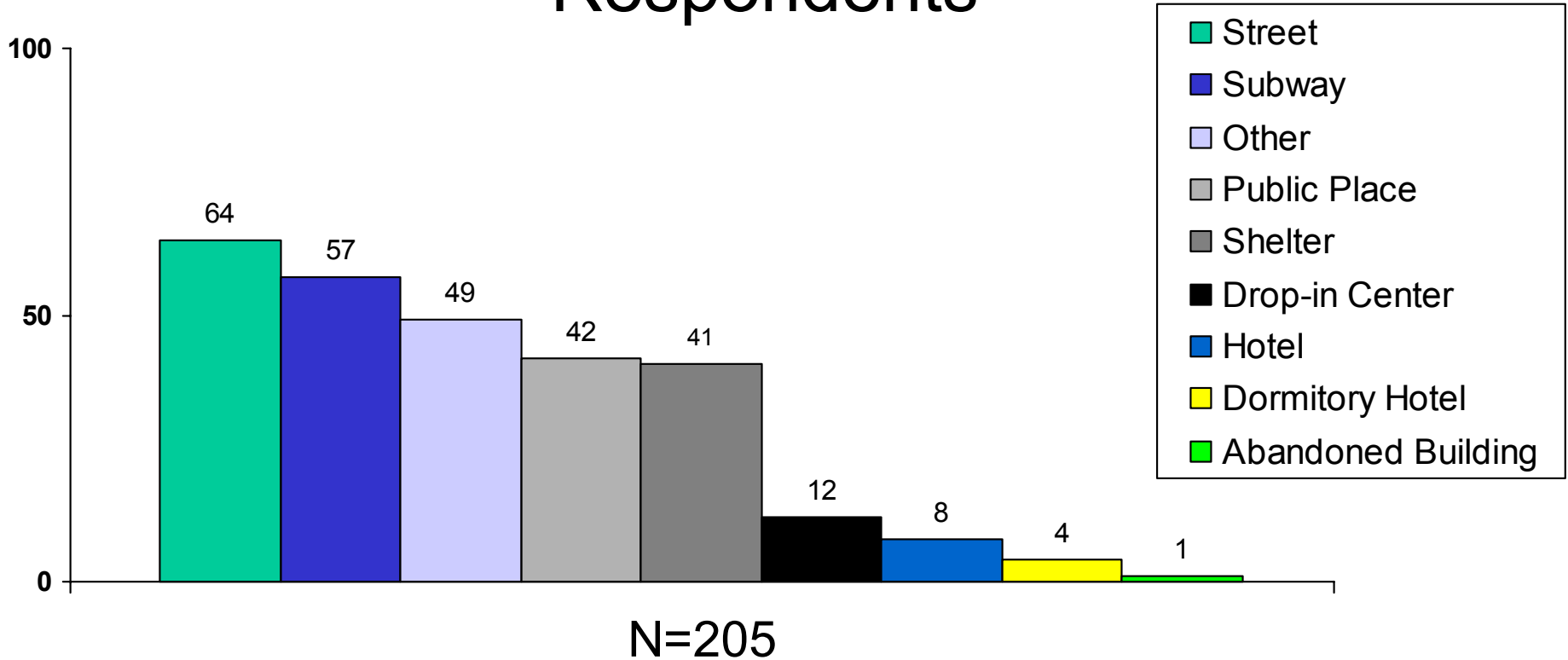


Distribution by Gender of Unsheltered and Sheltered Homeless Individuals



- An estimated 236 unsheltered homeless women are in Manhattan.
- Approximately one in ten unsheltered homeless individuals in Manhattan is a woman compared to approximately one in four in DHS single adult shelters.

Usual Places of Sleep as Reported by 205 Respondents



• Respondents were more likely to report usually sleeping on the streets and in subways than in shelters or drop-in centers.

Note: Above numbers do not add to the total number of unsheltered homeless individuals encountered. Data was not reported for some participants, and some participants reported multiple places.

Methodology

- Manhattan was divided into 899 small area units (groups of blocks and/or park areas) which were stratified based on their estimated density (high, medium, or low) of unsheltered homeless individuals.
- All Manhattan subway stations were stratified based on their estimated density (high, medium, or low) of unsheltered homeless individuals.
- A random sample of areas/stations was selected from each stratum to be covered on the night of the survey.
- Teams of volunteers were assigned areas/stations during a four hour period in the middle of the night to enumerate unsheltered homeless individuals.
- Using statistical methodology, DHS extrapolated from the number of unsheltered homeless individuals encountered to produce an estimate of the unsheltered homeless population in Manhattan.