



Construction Safety Week 2011

Safe Scaffold Operations Robert D'Alessio

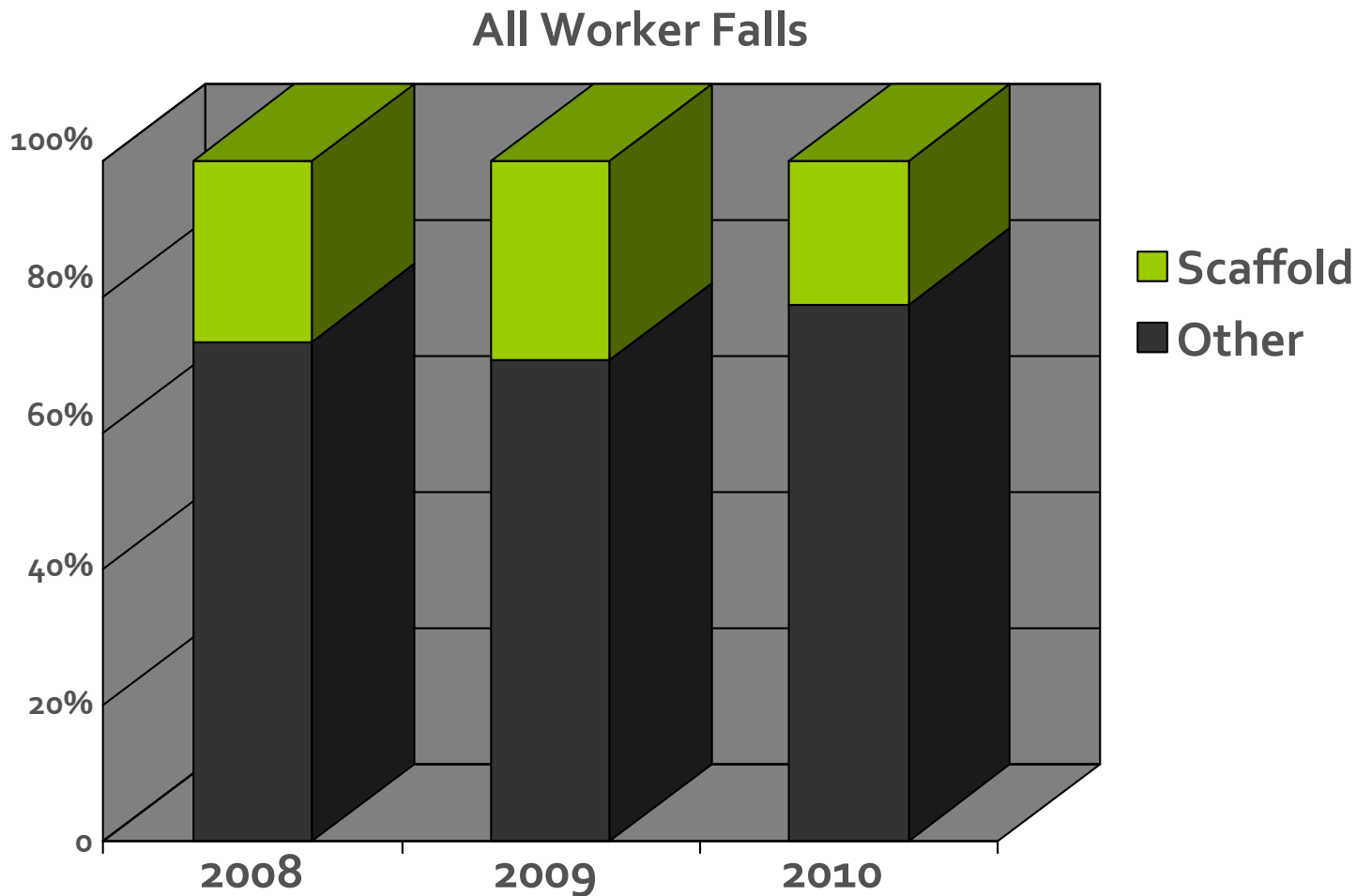
April 25, 2011 – NYU Rosenthal Pavilion

Experience Is Not Enough



Scaffold Accident Statistics

22% of all worker fall accidents were from scaffolds



In 2005, the City Council passed Local Law 52 of 2005 requiring:

- **Permits be obtained for supported scaffolds 40 feet or greater in height**
- **All supported scaffold users & erectors have proper training**

In 2007, the City Council passed Local Law 17 of 2007 requiring:

- **Department notification by riggers of all installations of c-hook and outrigger beams supporting suspended scaffolds**

- Formed in 2007
- Inspects supported and suspended scaffolds and sidewalk sheds
- Performs industry outreach
- Approves scaffold training courses and audits providers
- Performed more than 8,300 inspections in 2010

2010 Scaffold Statistics

- **12,621** suspended scaffold notifications
- **8,577** c-hook notifications
- **4,044** outrigger beam notifications
- **2,678** supported scaffold permits issued
- **5,844** sidewalk shed permits issued
- **3,809** complaints received about sidewalk sheds and scaffolds

Common violations issued for failing to provide:

- License rigger
- Designated foreman on site
- Daily logs kept
- Permit(s)
- Notification(s)
- Training cards
- "Certificates of Fitness"
- Design drawings

Common violations issued for sidewalk sheds:

- No lights / defective lighting
- Defective mud sill
- Out of plumb vertical members
- Loose / missing cross braces
- Deck enclosure loose
- Deck not extended past side lot line
- Advertisement on parapet

Sidewalk Shed Violations



**No Lights /
Defective
Lighting
Under
Sidewalk Shed
Decking**

Sidewalk Shed Violations



Defective Mud Sill

Sidewalk Shed Violations

Out of
Plumb
Vertical
Members



Sidewalk Shed Violations



**Loose / Missing
Braces**

Sidewalk Shed Violations



Deck Enclosure Missing

Sidewalk Shed Violations

Protection Not Extended Past Side Lot Line

Viol. No.: 34832185Z
Queens
25-60 Steinway st
04/29/2010



Sidewalk Shed Violations



Advertisement
on Parapet

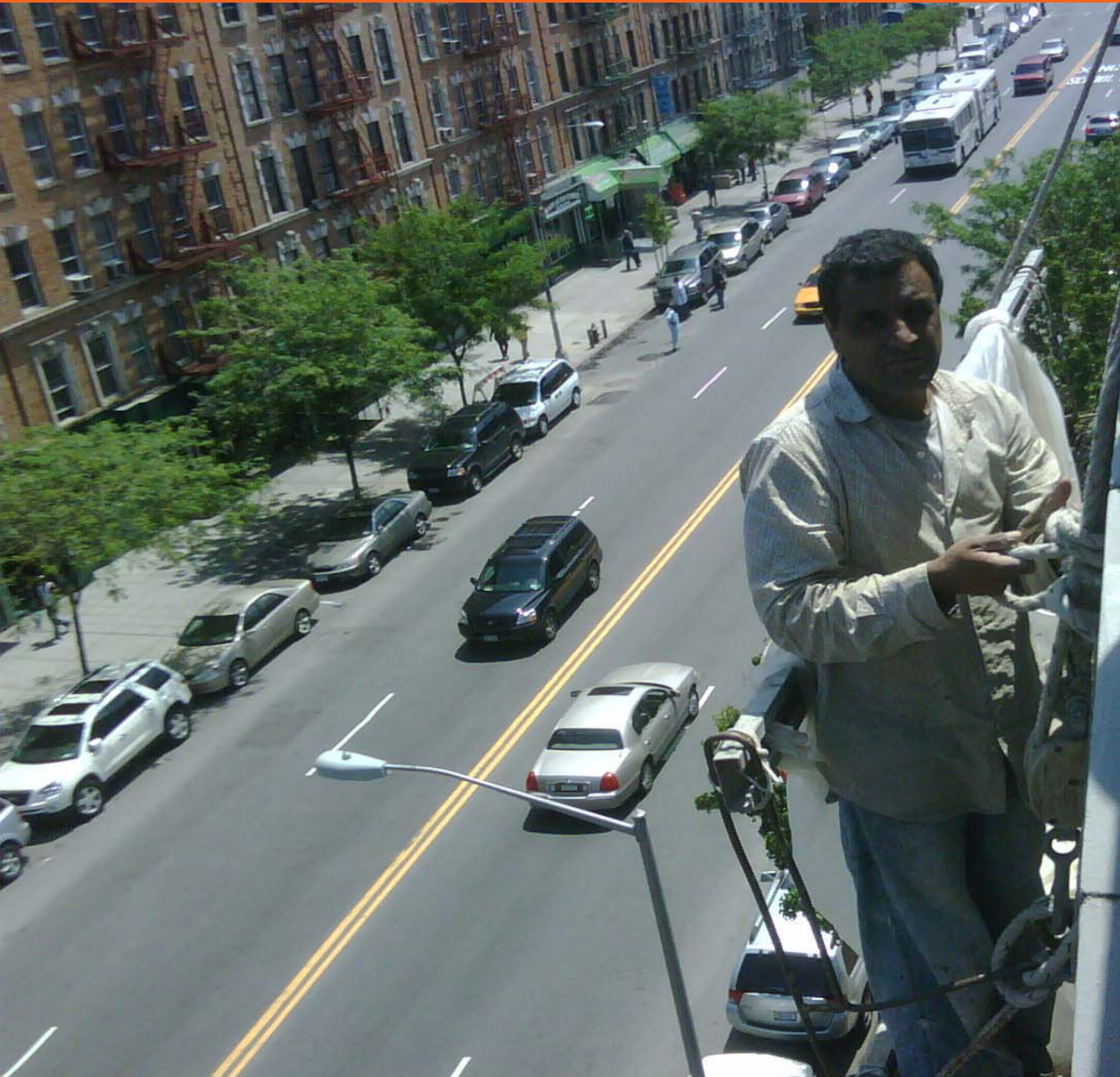


Suspended Scaffold Violations

Common technical violations with suspended scaffoldings:

- No harness / life line
- Improper C-Hook tieback
- Defective wire rope / birdcage
- Defective wire rope splice / termination
- Inappropriate counterweight
- Defective / inappropriate outrigger beam
- No life line padding
- Defective support / parapet

Suspended Scaffold Violations



**No Harness
or Life Line**

Suspended Scaffold Violations



Improper C-Hook Tieback

Suspended Scaffold Violations



**Defective Wire
Rope / Birdcage**

Suspended Scaffold Violations

**Defective Wire
Rope Splice /
Termination**



Suspended Scaffold Violations

Inappropriate Counterweight



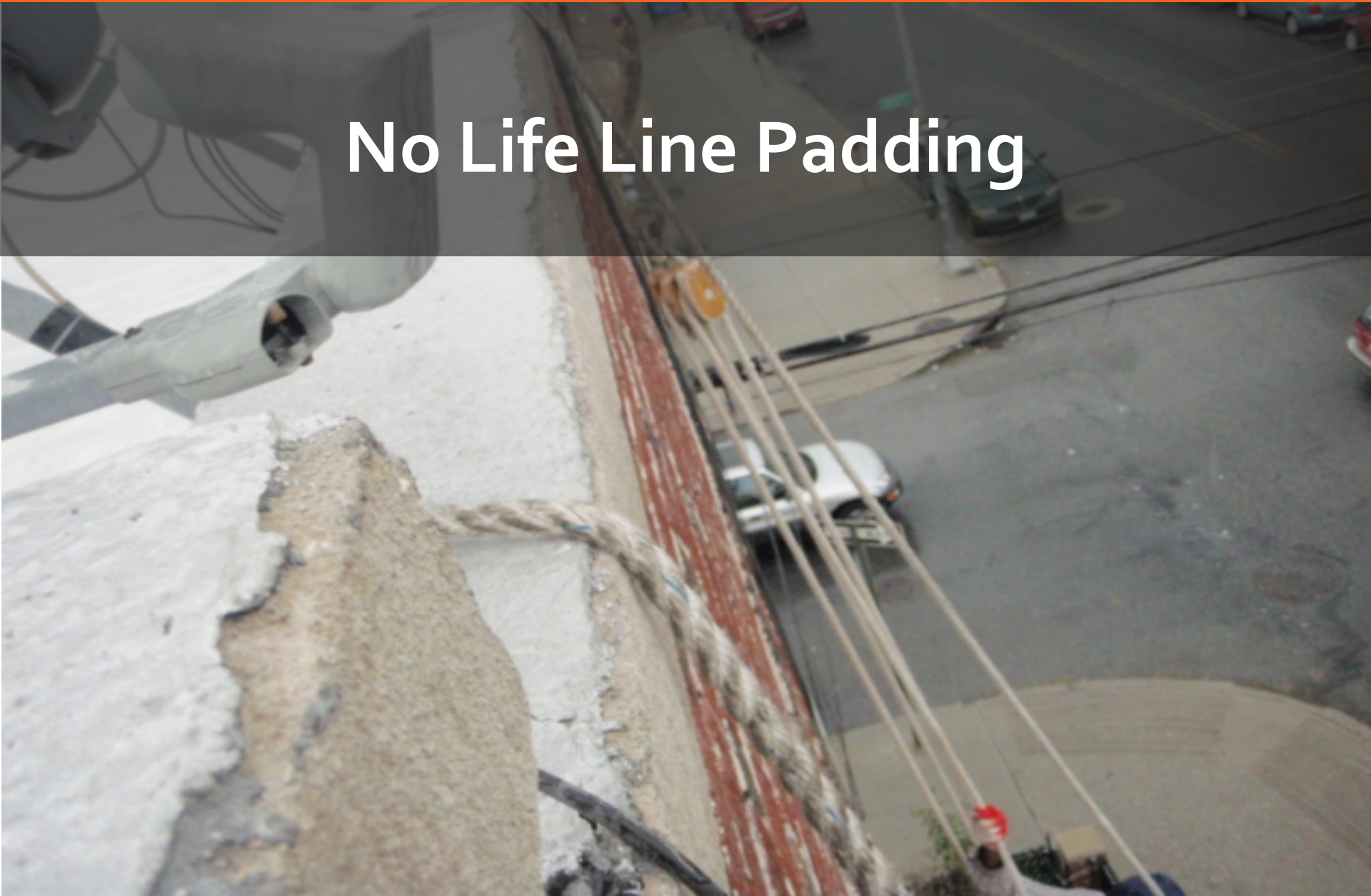
Suspended Scaffold Violations



Defective / Inappropriate Outrigger Beam

Suspended Scaffold Violations

No Life Line Padding



Common Violations



Defective Support / Parapet

Viol. No.: 346055441
Manhattan
173west 78st
09/26/2007

Supported Scaffold Violations

Common technical violations issued for supported scaffoldings:

- Improper support for work deck
- Excessive planking / overhang
- Scaffold screw adjustment improper
- Inadequate tieback
- Improper / missing guardrails
- Improper access
- Defective / missing debris netting

Supported Scaffold Violations



Improper Work Deck Support

Supported Scaffold Violations



Excessive Planking Overhang

Supported Scaffold Violations



**Scaffold Screw
Adjustment Improper**

Supported Scaffold Violations



Foundation / Improper

Supported Scaffold Violations



Foundation / Improper



Supported Scaffold Violations



**Inadequate
Tieback**

For access
appointments,
please call
718/996-2222

Supported Scaffold Violations

**Improper /
Missing
Guardrails**



Supported Scaffold Violations

A photograph showing a construction worker on a blue metal scaffold. The worker is positioned in a way that suggests they are not using a proper access point, such as a ladder or door, but are instead climbing or working from an unsafe position. The scaffold is made of blue metal poles and horizontal rungs. The background shows a clear blue sky and a portion of a building under construction.

Improper Access

Supported Scaffold Violations



Defective / Missing Debris Netting

- Chapter 33, Section 3314 of the New York City Building Code (Scaffold section)
- 1 RCNY 9 (Rule 9)
- Title 28, Article 404 (Licensing of riggers)
- Title 28, Chapter 1 (Permits, etc)
- OSHA Subpart L 1926.451;1926.452 (scaffolds)
- OSHA 1926.501 and 1926.502 (personal fall protection)
- www.nyc.gov/buildings Click on the tab "Reference Materials"

Questions?

Email questions to:
scaffoldsafetyteam@buildings.nyc.gov