



Public Meeting  
May 6, 2010

# Bleecker/Houston/Bowery Transportation Study

---



# Overview

---

- ☐ Goals & Objectives
- ☐ Study Area Boundaries
- ☐ Project Organization and Methodology
- ☐ Next Steps
- ☐ Questions and Comments

# Study Goals

---

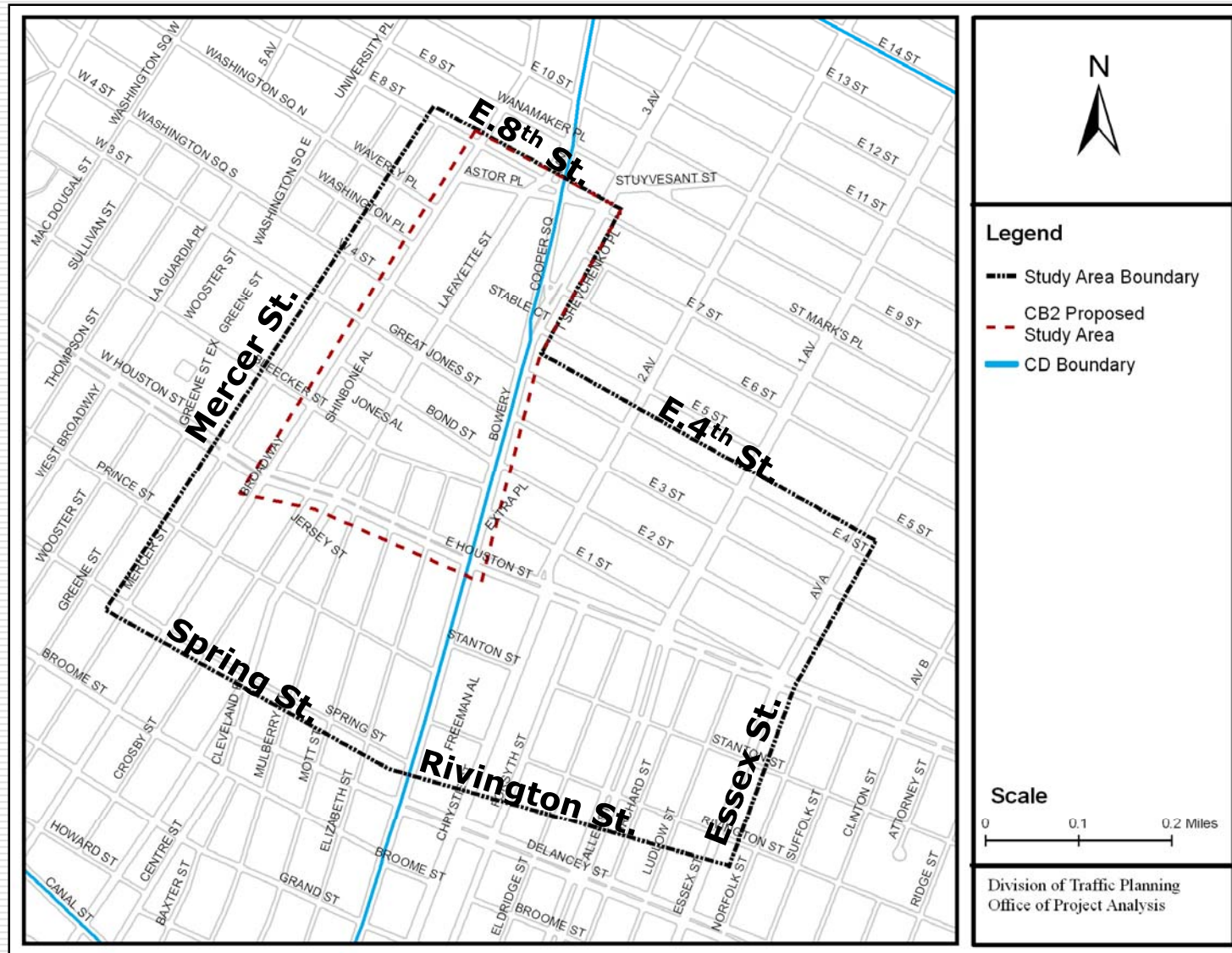
- ❑ To address community concerns
- ❑ To improve the safety of all street users (motorists, bicycles and pedestrians) and to improve the traffic circulation

# Study Objectives

---

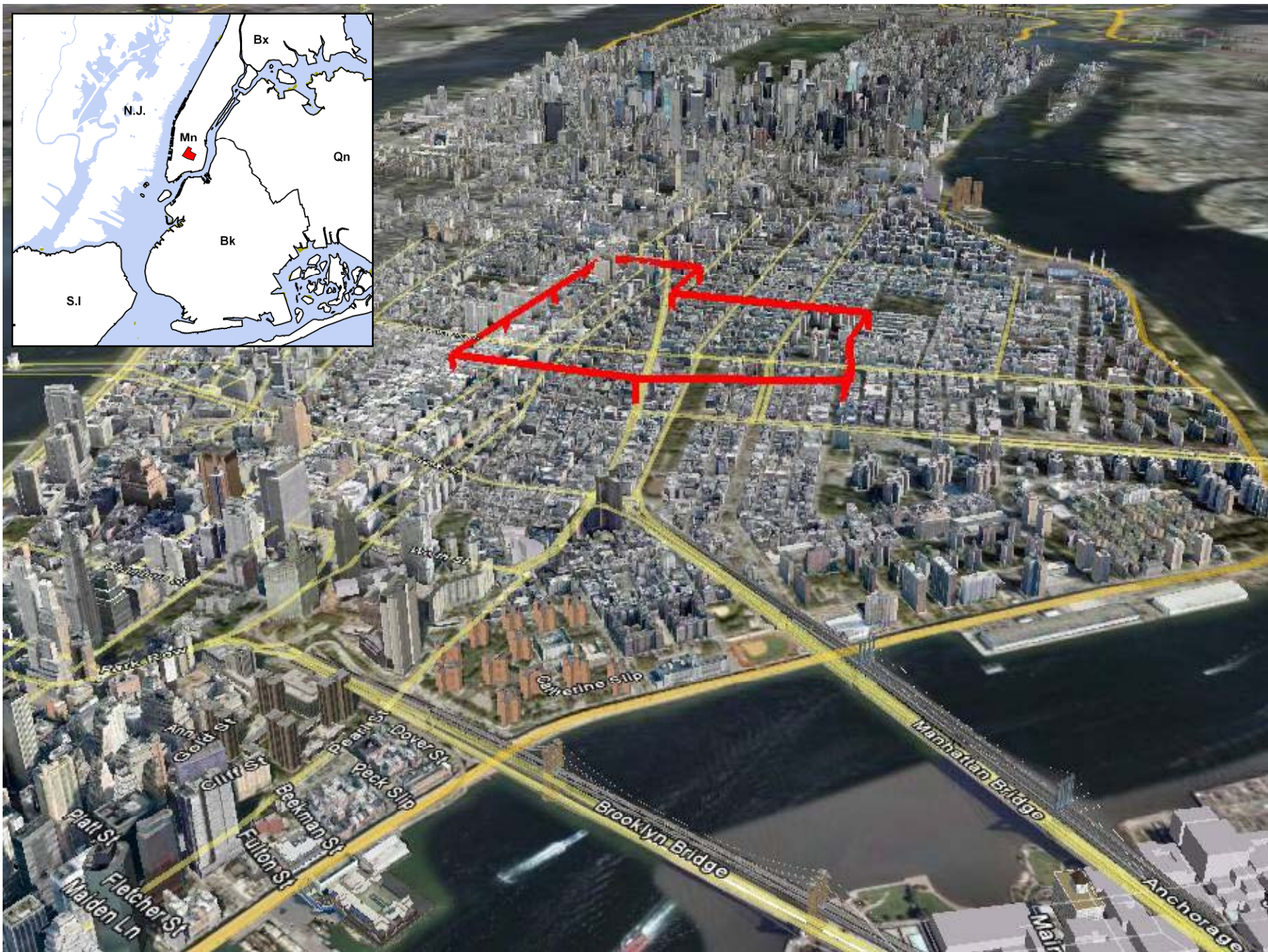
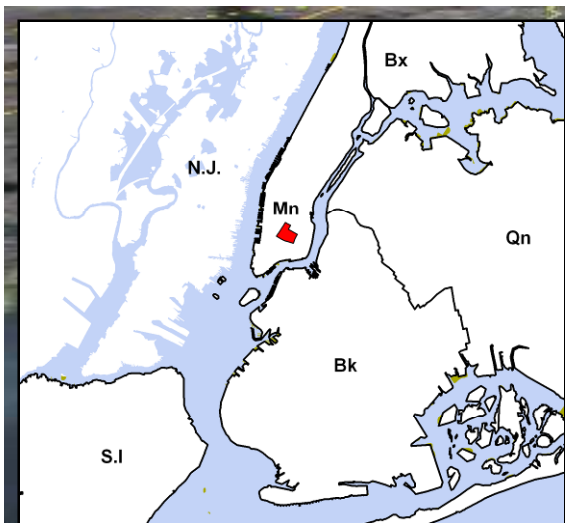
- ❑ To encourage extensive public participation
- ❑ To collect, investigate and analyze data that will help define the transportation issues
- ❑ To develop and implement a set of recommendations and improvement measures

# Study Area



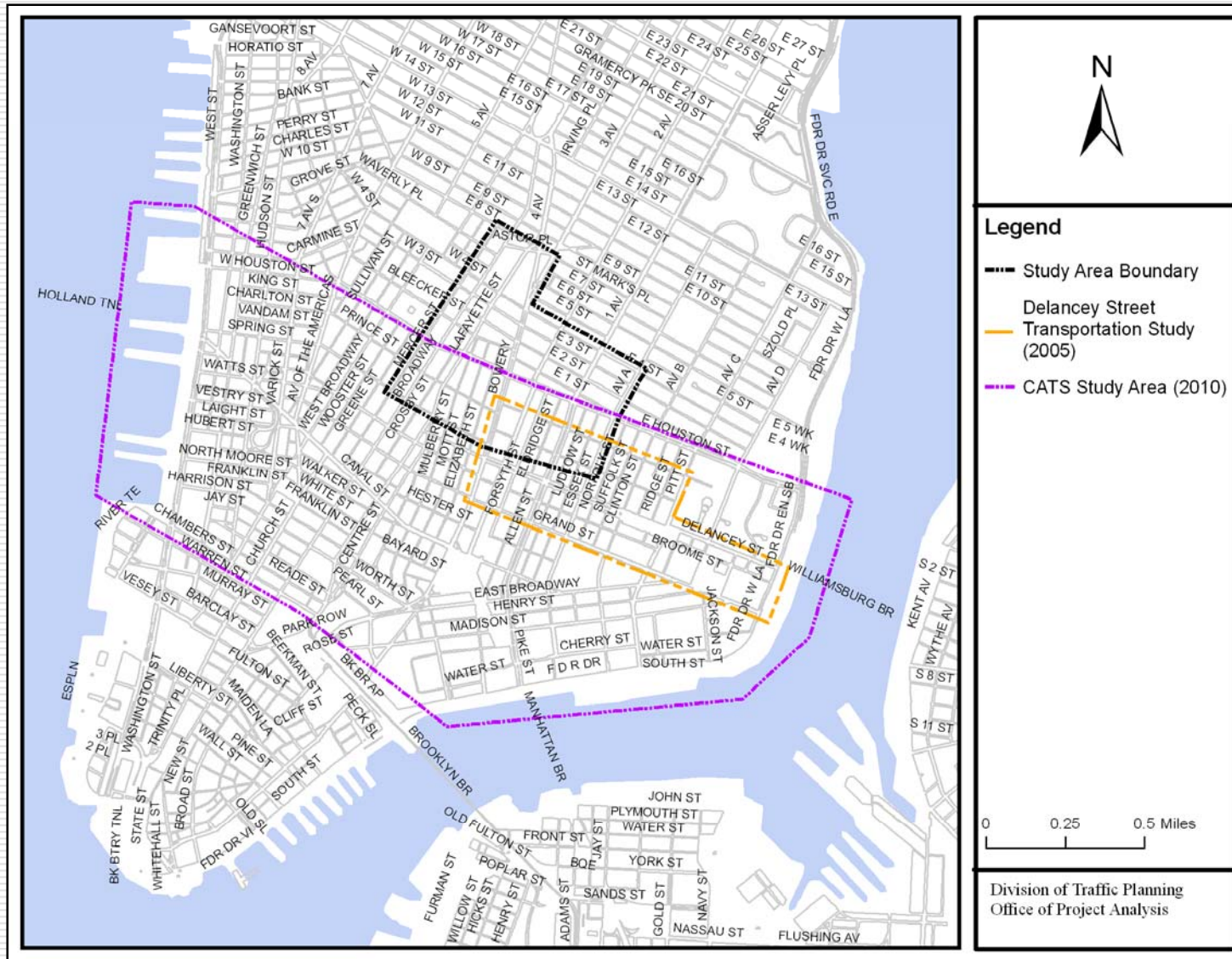
\* CD – Community District, CB – Community Board





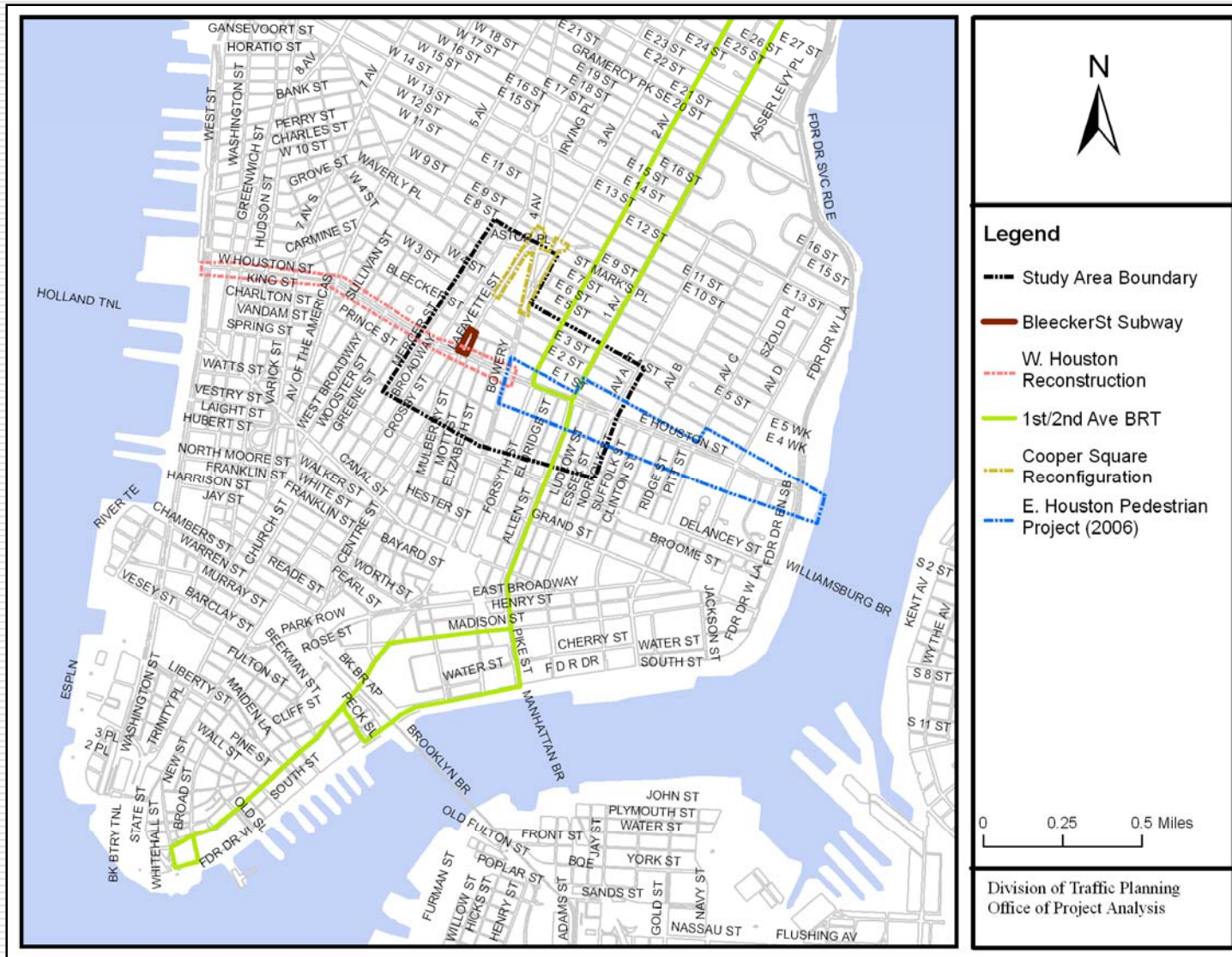


# Studies within Study Area



\* CATS – Canal Area Transportation Study

# Projects within Study Area



\* BRT – Bus Rapid Transit



# Community Issues

---

## ❑ Congestion

- Side Street Backups
- Dedicated Turn Lanes
- Horn Honking



## ❑ Safety

- Pedestrian Crossings



## ❑ Parking

- Double Parking
- Truck Loading & Unloading



# Subjects of Analysis

---

- ☐ Demographic/Socio-economic Characteristics
- ☐ Land Use and Zoning
- ☐ Vehicular Traffic
- ☐ Goods Movement
- ☐ Pedestrians and Bicycles
- ☐ Accident and Safety
- ☐ Parking
- ☐ Public Transit

# Demographics

---

## ☐ Population Characteristics

- Population Change
- Age
- Sex

## ☐ Socio-Economic Characteristics

- Household Size
- Income
- Labor Force
- Vehicle Ownership
- Journey to Work by Mode



# Zoning and Land Use

---

## ☐ Zoning

- Zoning Regulations
- Recent or proposed rezonings

## ☐ Land Use

- Classification by block and lot
- Major trip generators

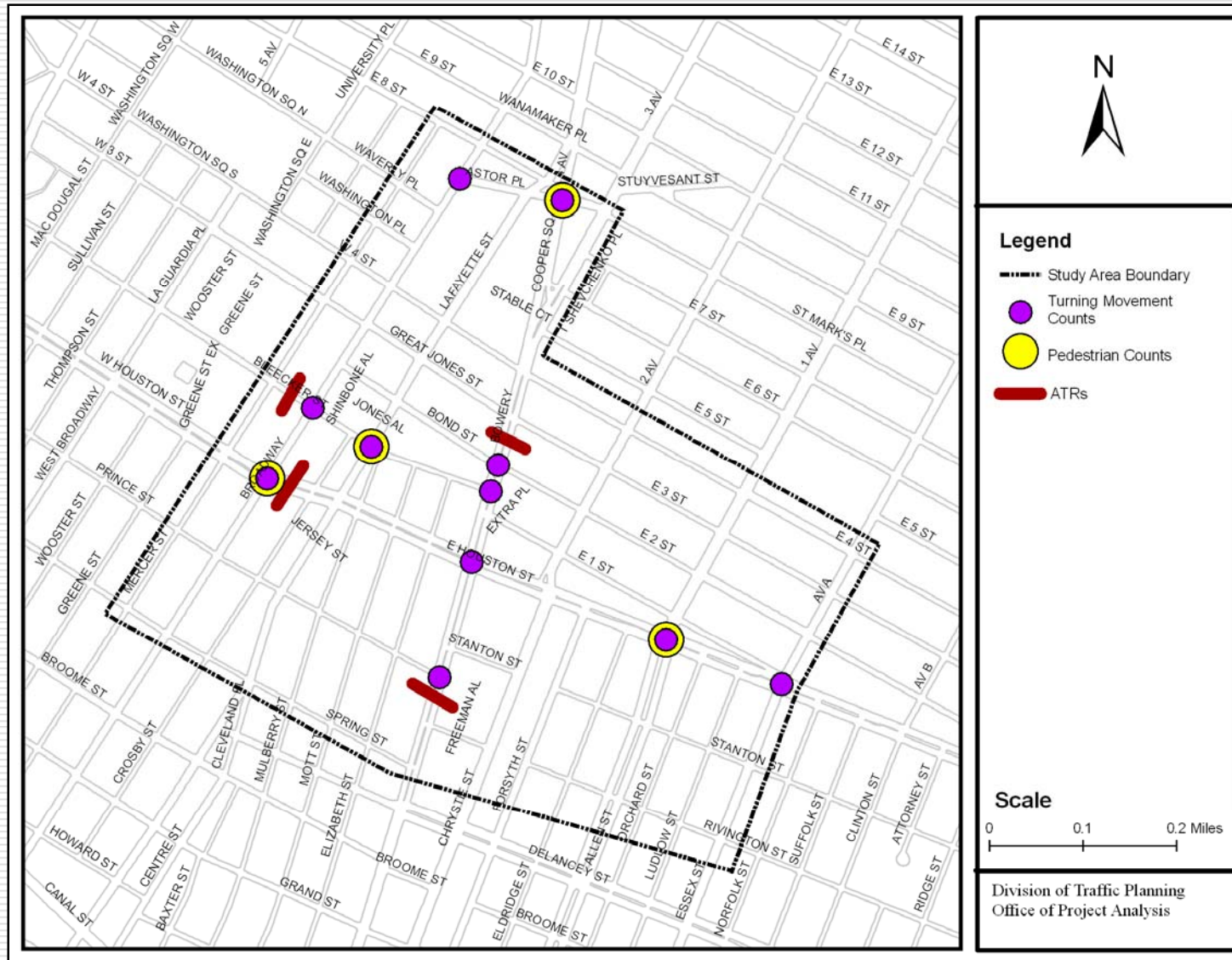
# Traffic and Transportation

---

## □ Data Collection

- ATRs, Manual Turning Movement & Classification Counts
- Travel Speed
- Street Inventory
- Bike and Pedestrian Counts
- Bike Routes
- Truck Routes

# Data Collection Plan





# Traffic and Transportation

---

## ☐ Analysis

- Selection of Peak Hours
- Highway Capacity Analysis
  - ☐ Volume/Capacity
  - ☐ Delay
  - ☐ Level Of Service

# Pedestrians & Bicycles

---

## □ Pedestrian Level of Service (LOS)

- Corner Analysis
- Crosswalk Analysis



# Accident & Safety

---

- ❑ Accidents History (2006-2009)
- ❑ Accident Type, Frequency and Severity



# Parking

---

## ☐ On Street Parking

- Parking Inventory (Supply)
- Parking Utilization (Demand)
- Price Structure

## ☐ Off Street Parking

- Lots/Garages
- Location
- Capacity, Utilization
- Price Structure

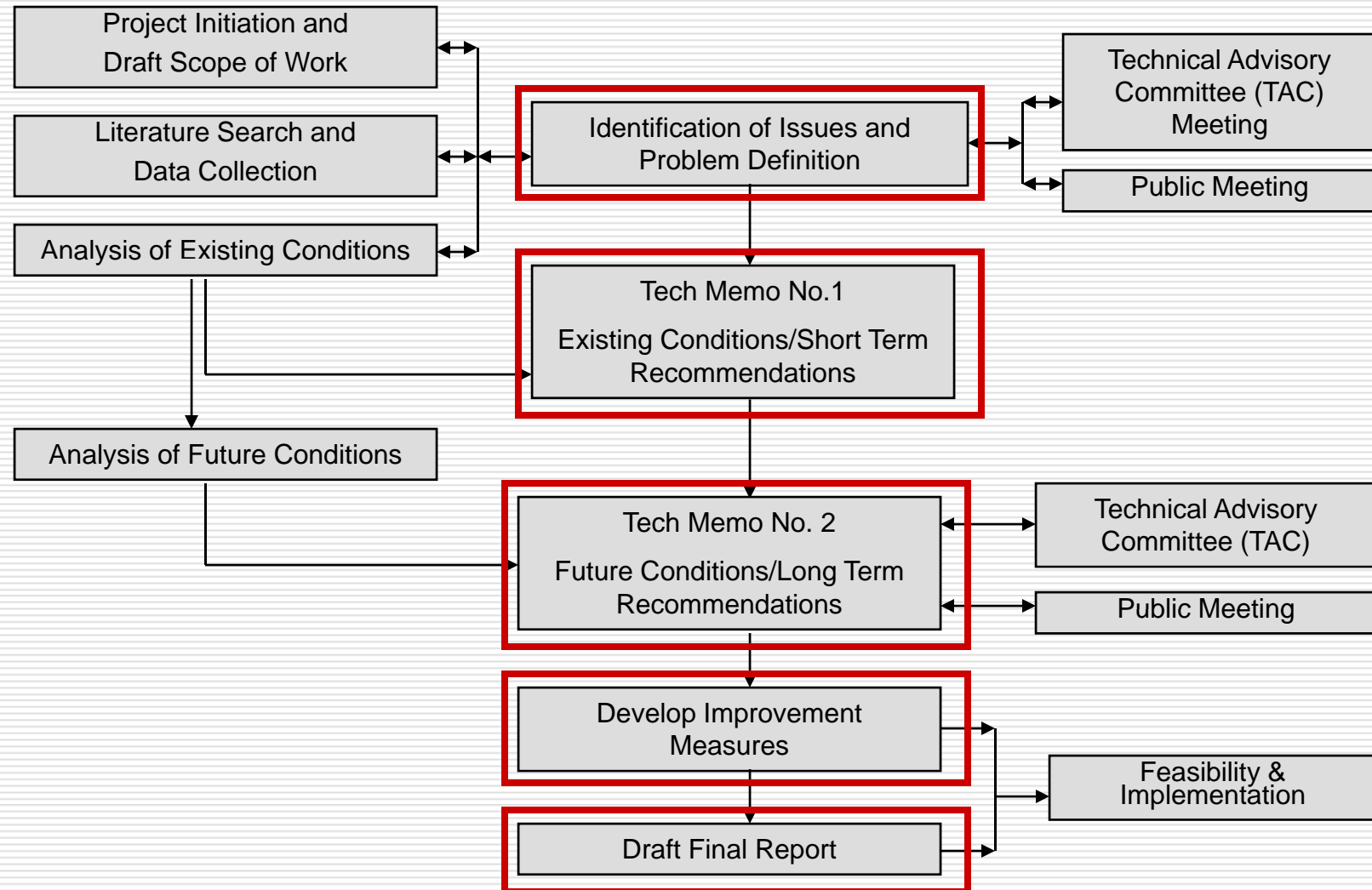
# Transit Provision

---

## ☐ Bus/Subway

- Bus Stops, Subway Stations, Transfer Points
- Frequency
- Ridership

# Project Organization & Methodology





# Next Steps

---

- ❑ Conduct Data Collection
- ❑ Analyze Existing Conditions
- ❑ Draft Tech Memo No. 1  
(Existing Conditions and Short Term Recommendations)
- ❑ Conduct Future Conditions Analysis
- ❑ Develop Improvement Measures
- ❑ Conduct Second TAC Meeting & Public Meeting
- ❑ Draft Final Report and Implement Improvement Measures

# Bleecker/Houston/Bowery Transportation Study

---

Questions  
&  
Comments

Visit [www.nyc.gov/dot](http://www.nyc.gov/dot) or  
contact Harvey LaReau at [hlareau@dot.nyc.gov](mailto:hlareau@dot.nyc.gov) for more information