

# Queens Boulevard & 71<sup>st</sup> Ave/108<sup>th</sup> St

High Pedestrian Crash Location

Community Board 6 – March 14, 2012

2012

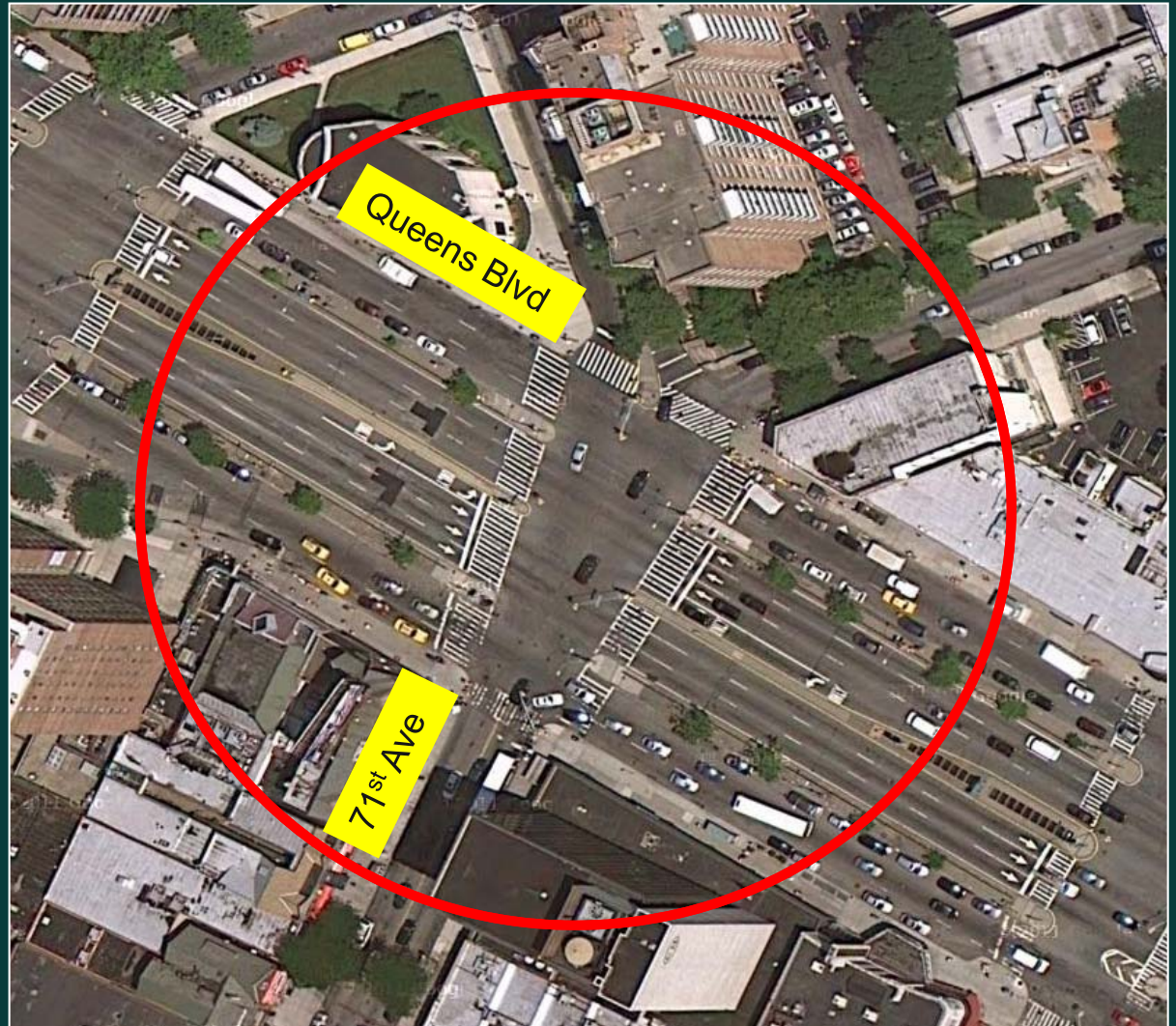


Commissioner Janette Sadik-Khan New York City Department of Transportation  
Office of Research, Implementation and Safety



# Project Background

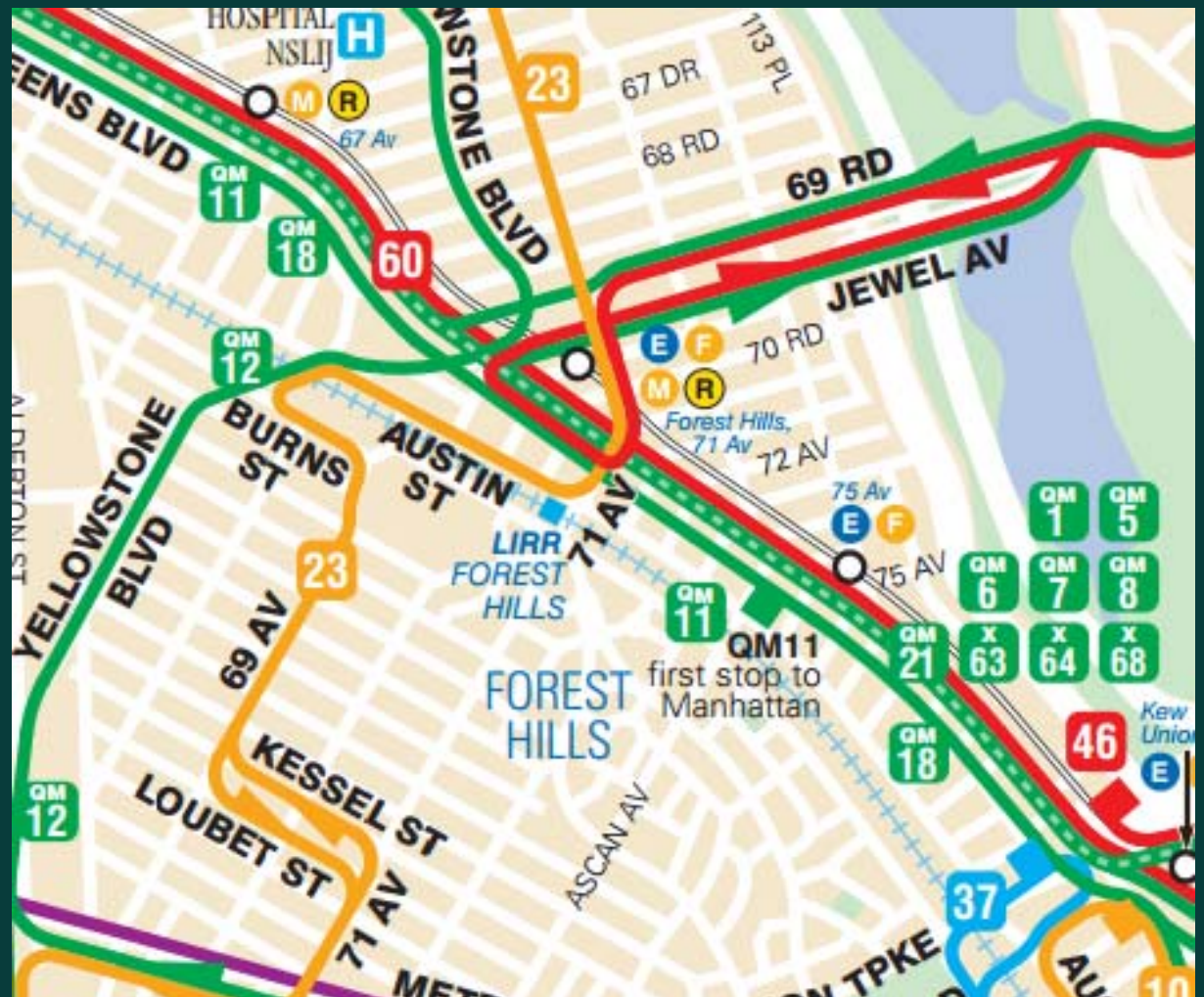
- High crash intersection
- Forest Hills neighborhood
- Community request for improvements



# Existing Conditions

Institute for

- Through truck routes on Queens Blvd
- Various Bus routes on 71st Ave, 108th and Queens Blvd
- Subway stations: Forest Hills E/F/M/R at 71st Ave

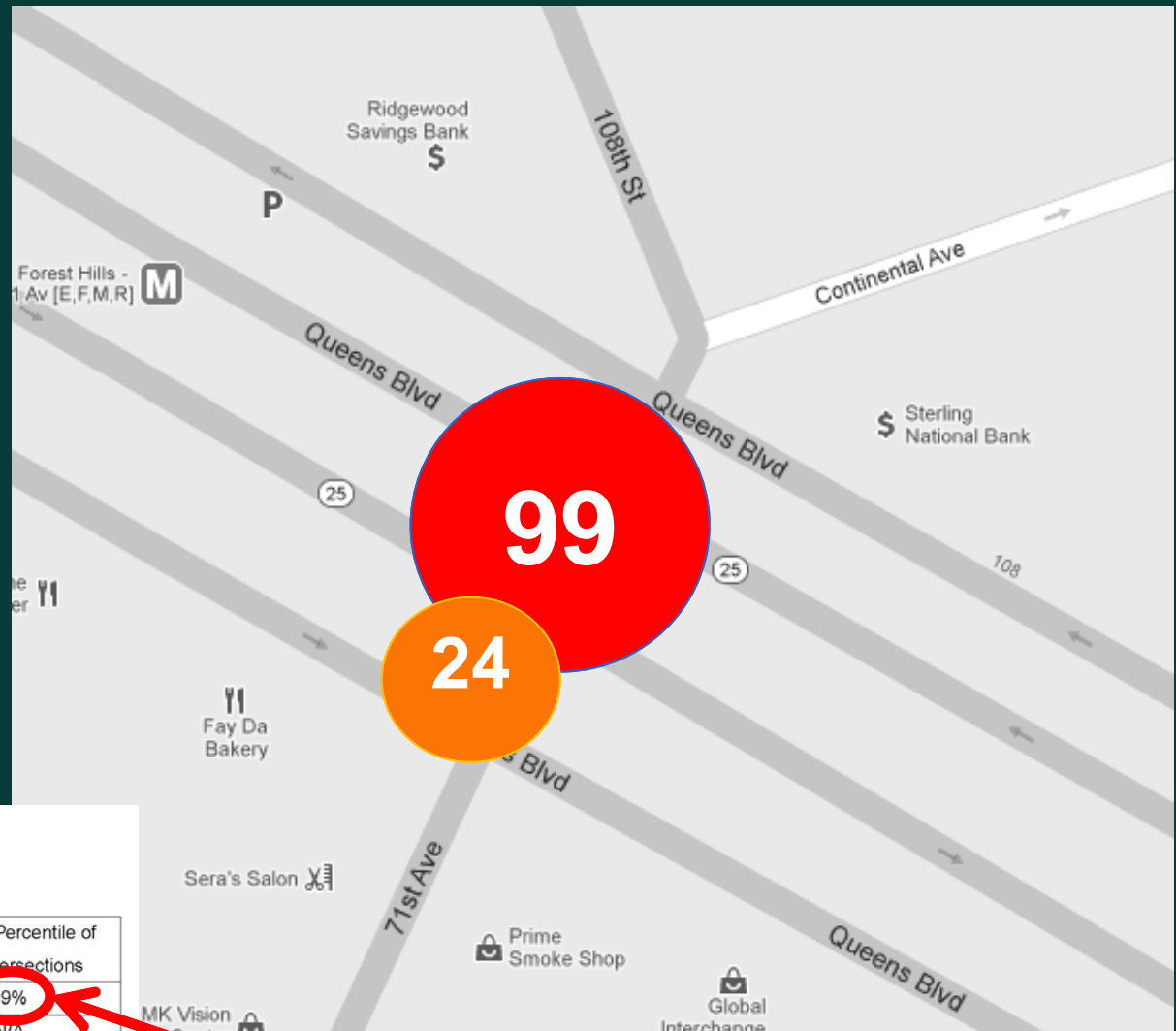




# Safety Data

**Total Injuries**  
(Motor vehicle  
occupant, bicycle  
and pedestrian)  
2006-2010

**All  
Pedestrian  
Injuries**  
2006-2010



## Queens Blvd At 71st Ave, QN

### Injury Summary, 2006-2010

	Total Injuries	Avg Inj/Yr	Severity Percentile of Boro Intersections
Pedestrian	24	4.8	99%
Bicyclist	1	0.2	N/A
Motor Vehicle Occupant	37	7.4	99%
Total	99	19.8	99%

Fatalities, 01/01/2006-12/19/2011 : None

Source: Injuries: NYS Dept. of Transportation  
Fatalities: NYC Dept. of Transportation

**Ranks in 99<sup>th</sup> percentile for  
pedestrian crashes in Queens**

# Need: Why Queens Blvd & 71<sup>st</sup> Ave?



Queens Blvd & 71<sup>st</sup> Ave looking south



Queens Blvd & 71<sup>st</sup> Ave, looking north

- Long crossing distances
- Heavy pedestrian and vehicle volumes
- Multiple pedestrian/vehicle conflict points
- Substandard existing medians



Queens Blvd & 71<sup>st</sup> Ave, looking south



# Proposal Details



Construct concrete median widening in east crosswalk to create more refuge space for safer crossings



# Proposal Details

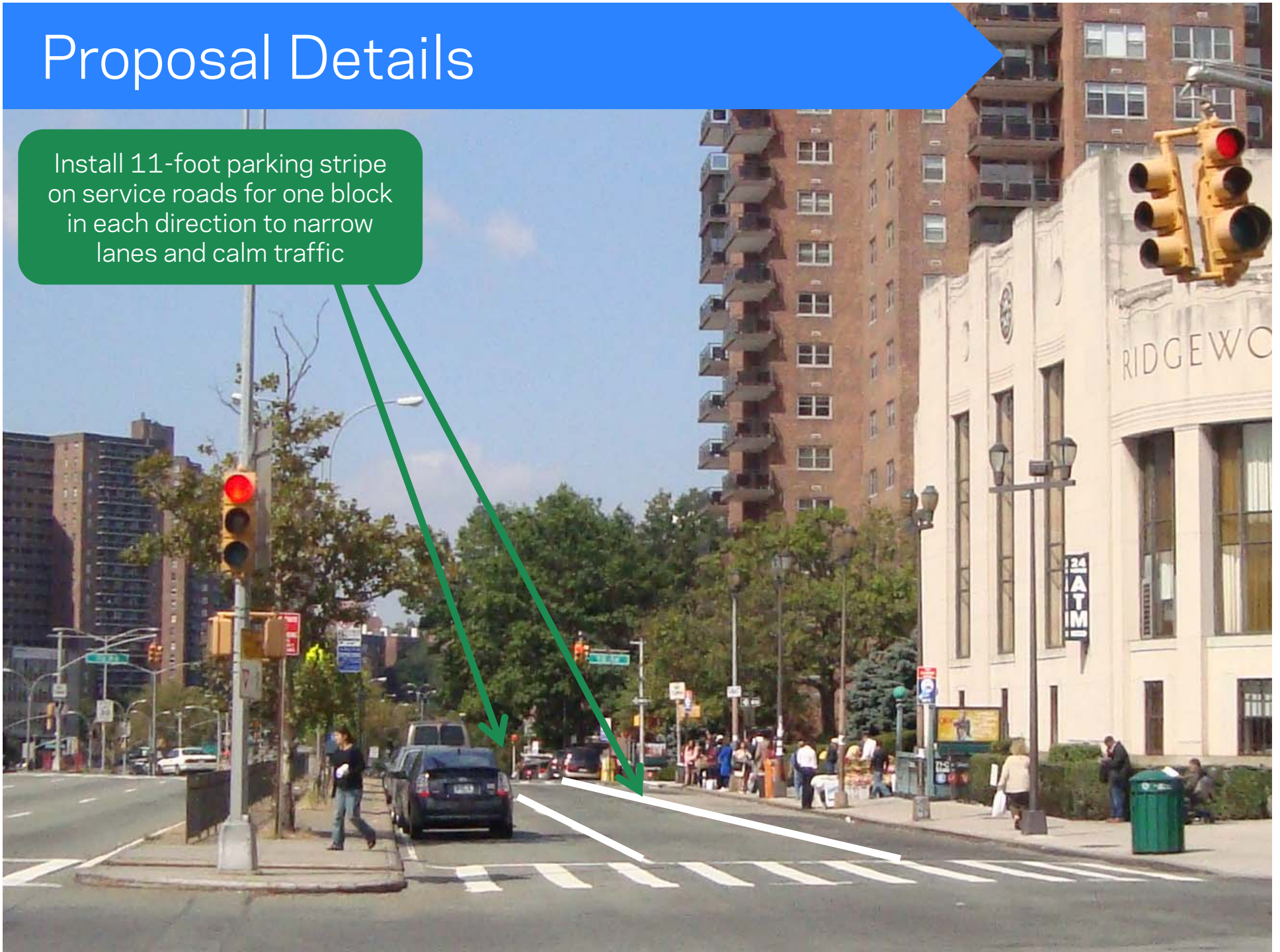


Construct concrete median widening in west crosswalk to create more refuge space for safer crossings



# Proposal Details

Install 11-foot parking stripe on service roads for one block in each direction to narrow lanes and calm traffic



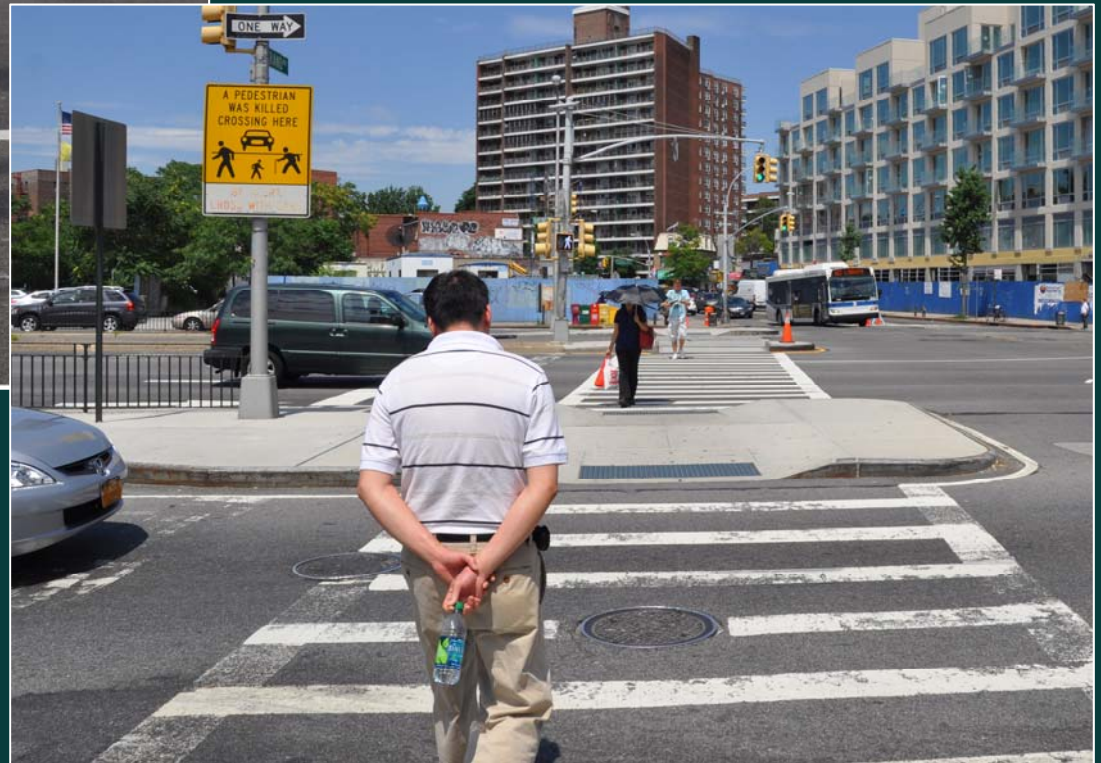


# Benefits of Proposal

- Reduces speeding / calms traffic
- Reduces crossing distances
- Creates safer pedestrian crossings



Queens Blvd & 69<sup>th</sup> St, 2011 Project



Queens Blvd & Broadway, 2010 Project



Questions?

**Thank  
You**

Contact:

Queens Borough Commissioner's Office at [gbc@dot.nyc.gov](mailto:gbc@dot.nyc.gov) or 212-839-2510