

Co-op City

Corridor Safety Improvements



Commissioner Janette Sadik-Khan, New York City Department of Transportation
Presented by NYCDOT Bicycle Program to Bronx CB 10 Municipal Services Committee on April 9, 2013

Background

- Bartow Ave from Co-op City Blvd to I-95 to be resurfaced by DDC (earmark programmed for resurfacing)
- Bartow Ave is a High Crash Corridor ranking in the 79th percentile for corridors in the Bronx
- High speeds: >50% of vehicles travel above speed limit on Co-op City Blvd
- Parks is building an extension to Hutchinson River Greenway that will connect to Bartow Ave (Construction began 2012)
- Community requests for bike lanes and greenway connections



Project Map



Speeding

Frequency of Speeding

Bartow Avenue and Co-op City Boulevard

Avenue & Segment	Percent Speeding
Bartow Ave EB @ Co-op City Blvd	16%
Bartow Ave WB @ Co-op City Blvd	16%
Co-op City Blvd NB @ Bellamy Loop	68%
Co-op City Blvd SB @ Bellamy Loop	48%

- **Wide moving lanes on Co-op City Boulevard lead to excessive speeding**

Injury Summary

Bartow Avenue – Injury Summary 2006-2010 Between Baychester Avenue and Hutchinson River Parkway

	Total Injuries	Severe Injuries	Killed/ Severely Injured
Pedestrian	26	1	1
Bicyclist	1	1	1
Motor Vehicle Occupant	142	6	6
Total	169	8	8

- **High Crash Corridor with 14.2 KSI per mile, ranking in the top third of Bronx corridors.**

Injury Summary

Co-op City Boulevard – Injury Summary 2006-2010 Between Bartow Avenue and Baychester Avenue

	Total Injuries	Severe Injuries	Killed/ Severely Injured
Pedestrian	18	0	0
Bicyclist	1	1	1
Motor Vehicle Occupant	92	3	3
Total	111	4	4

- **Corridor with 3 KSI per mile, ranking in the lowest third of Bronx corridors.**

Source:

Injuries: NYS Dept. of Transportation, Fatalities: NYC Dept. of Transportation

Traffic Volume/Lane Comparison

Current Weekday Peak Volumes Bartow Avenue and Co-op City Boulevard

Avenue & Segment	Number of Travel Lanes	Volume**
Bartow Ave EB @ Co-op City Blvd	3	565 (17:00p – 18:00p)
Bartow Ave WB @ Co-op City Blvd	3	398 (16:00p – 17:00p)
Co-op City Blvd NB @ Bartow Ave	2	638 (18:00p – 19:00p)
Co-op City Blvd SB @ Bartow Ave	2	424 (16:00p – 17:00p)

- **Bartow Avenue carries fewer vehicles yet has more moving lanes than Co-op City Boulevard**

Traffic Volume/Lane Comparison

Current Weekend Peak Volumes Bartow Avenue and Co-op City Boulevard

Avenue & Segment	Number of Travel Lanes	Volume**
Bartow Ave EB @ Co-op City Blvd	3	772 (14:00-15:00)
Bartow Ave WB @ Co-op City Blvd	3	533 (15:00-16:00)
Co-op City Blvd NB @ Bartow Ave	2	832 (16:00-17:00)
Co-op City Blvd SB @ Bartow Ave	2	531 (14:00-15:00)

- **Bartow Avenue carries fewer vehicles yet has more moving lanes than Co-op City Boulevard**

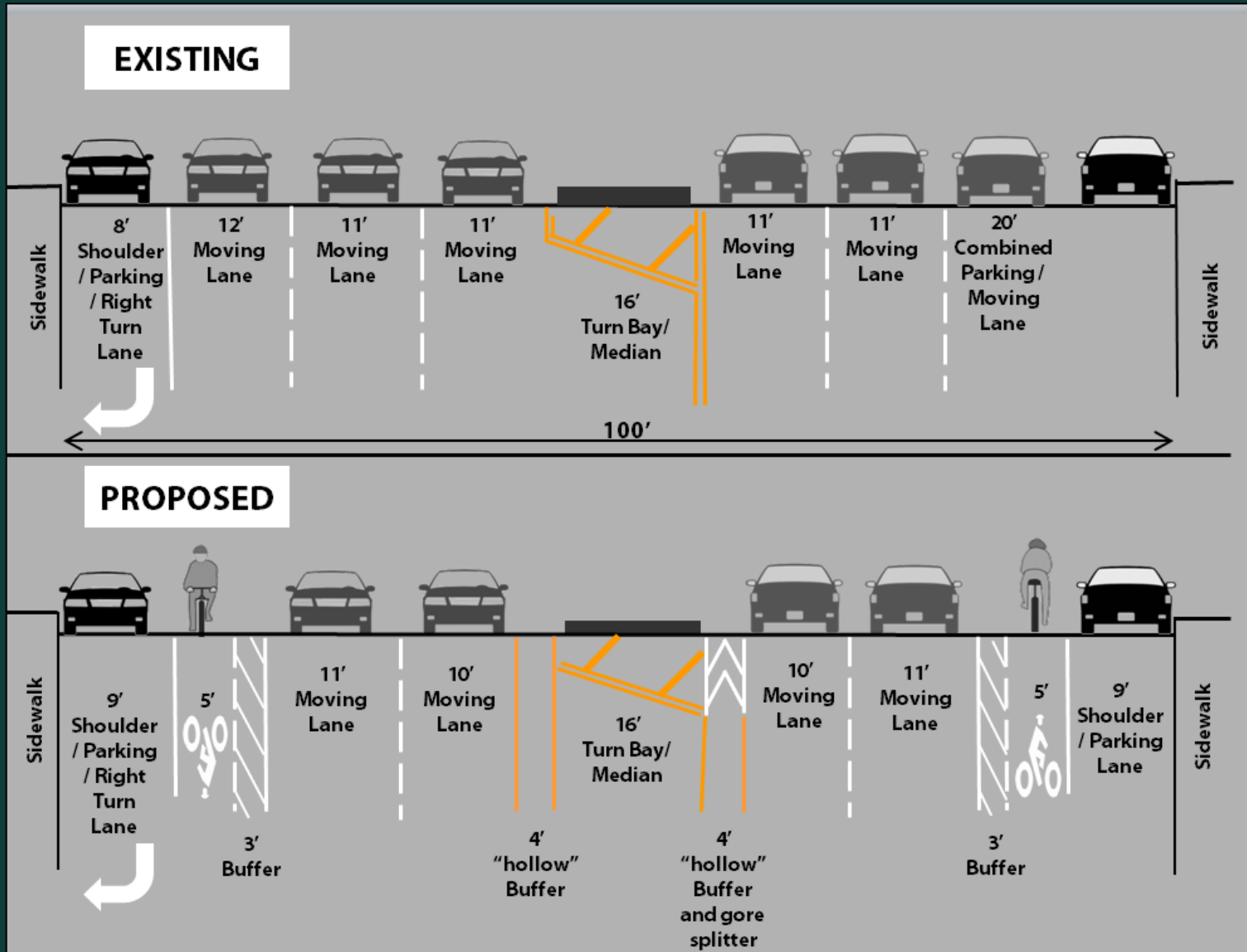
Bartow Avenue Feasibility Analysis

			Bartow Avenue at Peak Hours					
			Existing			Proposed		
Street Name	Cross Street	# of cars	# of lanes	Avg. Delay	LOS	# of lanes	Avg. Delay	LOS
Bartow Ave EB	Asch Loop	952	3	13.6	B	2	16.8	B
Bartow Ave WB	Asch Loop	941	3	13.6	B	2	17.4	B
Bartow Ave EB	Co-op City Blvd	772	3	40.6	D	2	40.9	D
Bartow Ave WB	Co-op City Blvd	533	3	23.5	C	2	26.1	C

- **Level of service analysis conducted for existing and proposed conditions**
- **Analysis indicates Bartow Ave will perform well with lane reduction**

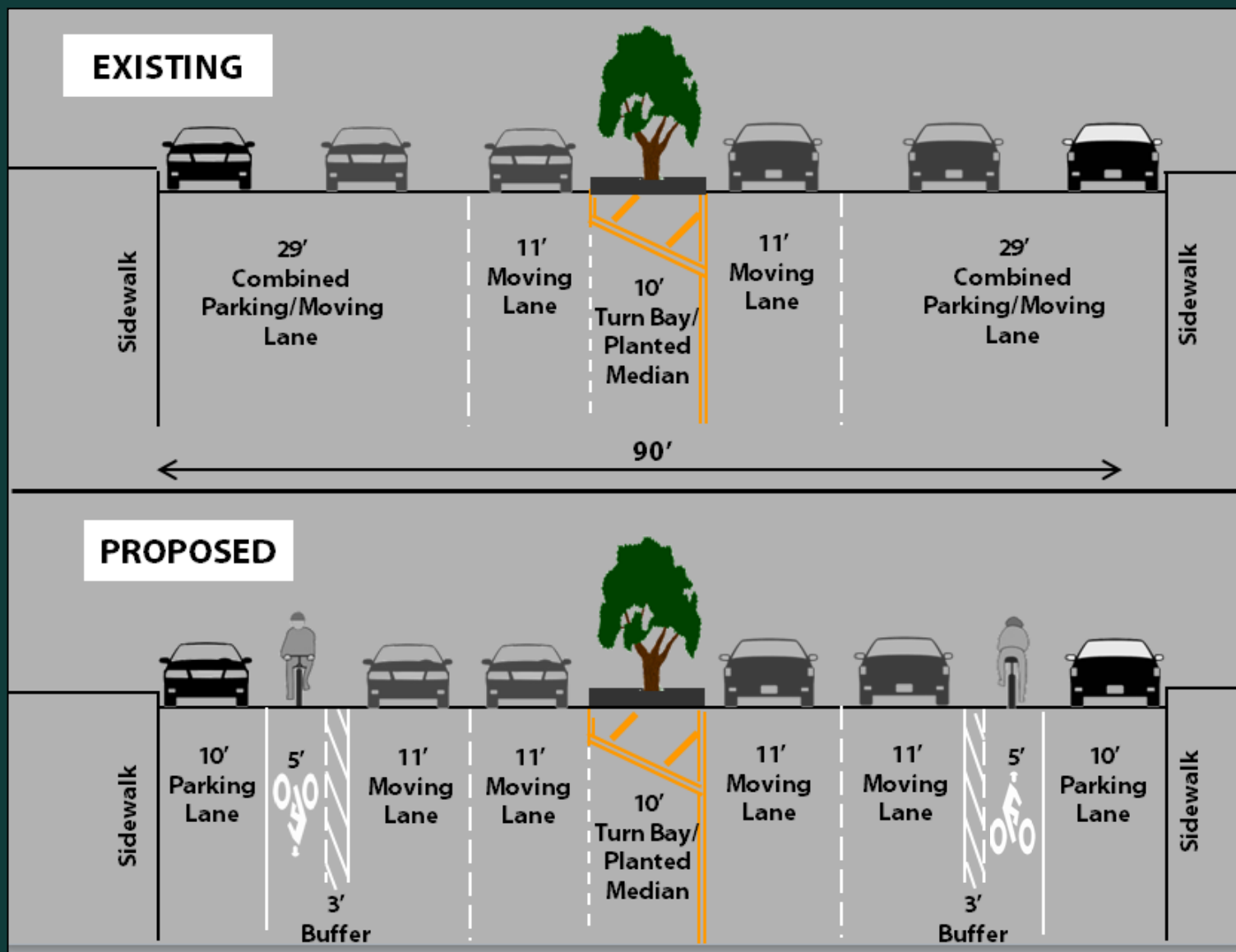
Proposed Street Section

Bartow Avenue

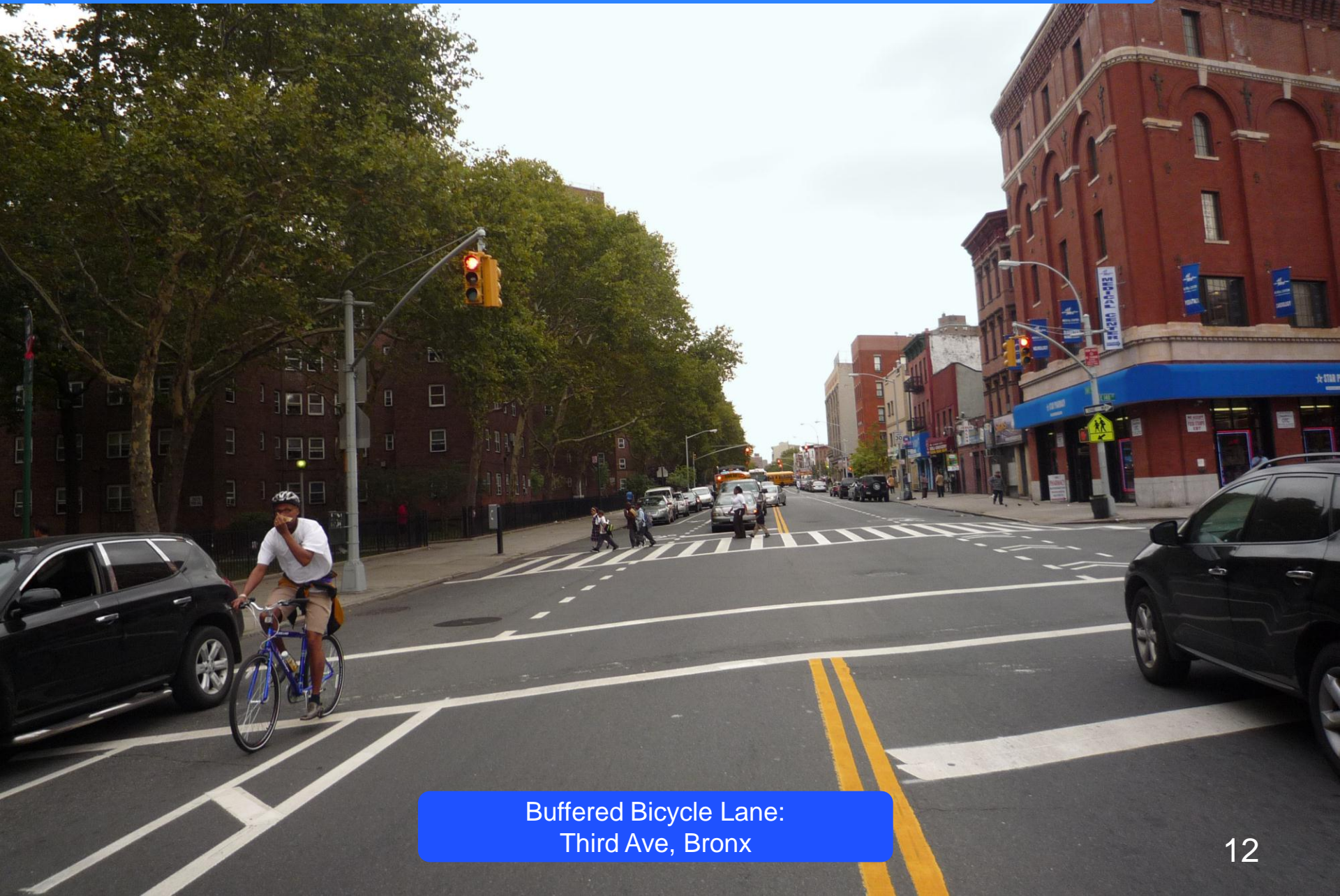


Proposed Street Section

Co-op City Boulevard



Example of Proposed Bicycle Facility



Buffered Bicycle Lane:
Third Ave, Bronx

Proposal Benefits

- Reduces speeding / calms traffic
- Redesigns .5 miles of a high crash corridor
- Safer pedestrian crossing
- Safe, convenient cycling routes connecting Co-op City to the Hutchinson River Greenway and Pelham Bay Park 6 train stop
- Adds 3.6 lane miles to the bicycle network

Questions?

Thank
You