

# South End Avenue

## Pedestrian Safety Improvements

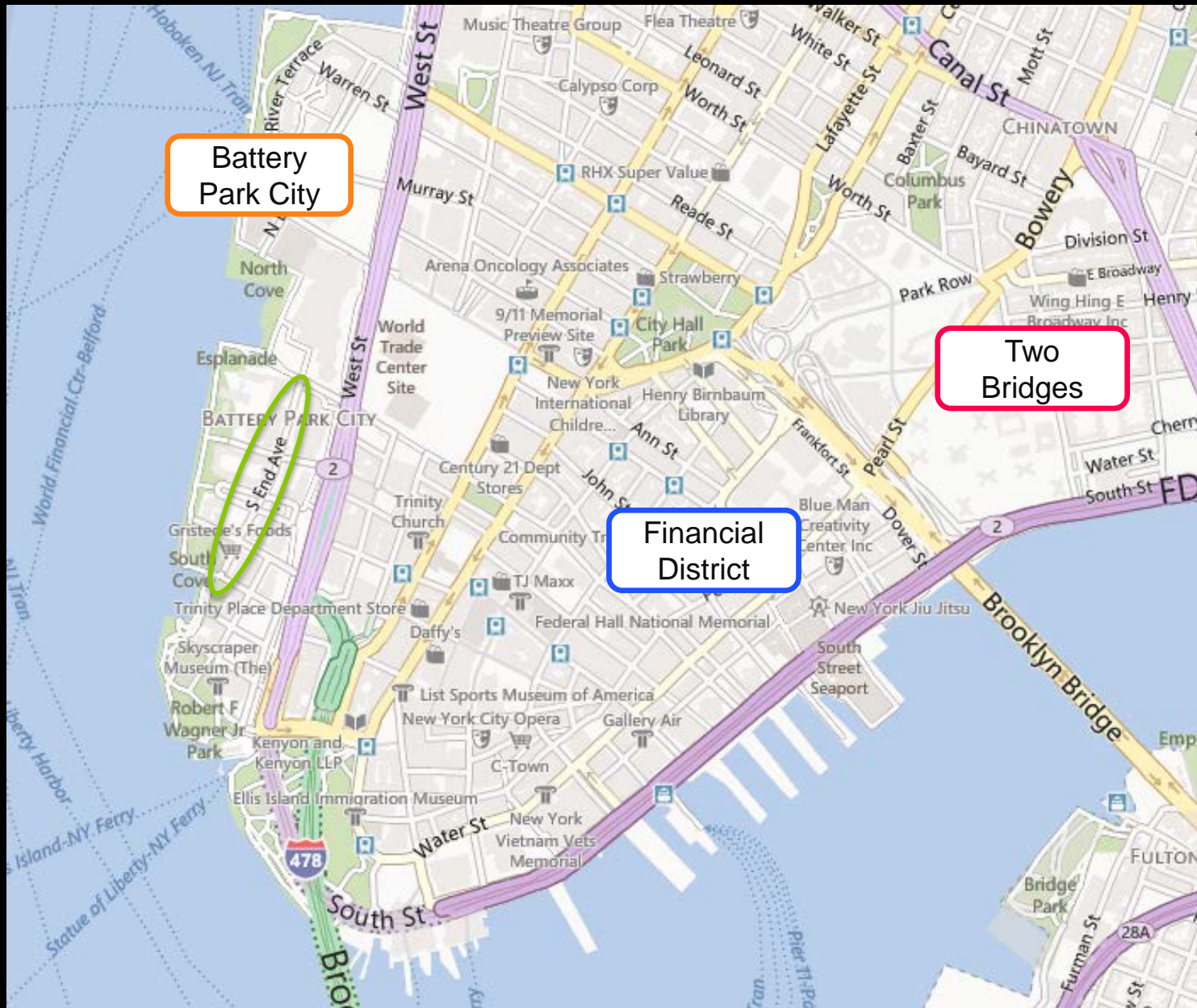
2013



Commissioner Janette Sadik-Khan New York City Department of Transportation  
Presented by the Pedestrian Projects Group to Community Board 1 Battery Park City Committee



# Battery Park City Neighborhood



# South End Ave



Gristede's Foods

Rector Park

1 World Financial Center

W Thames St

South End Ave

Liberty St

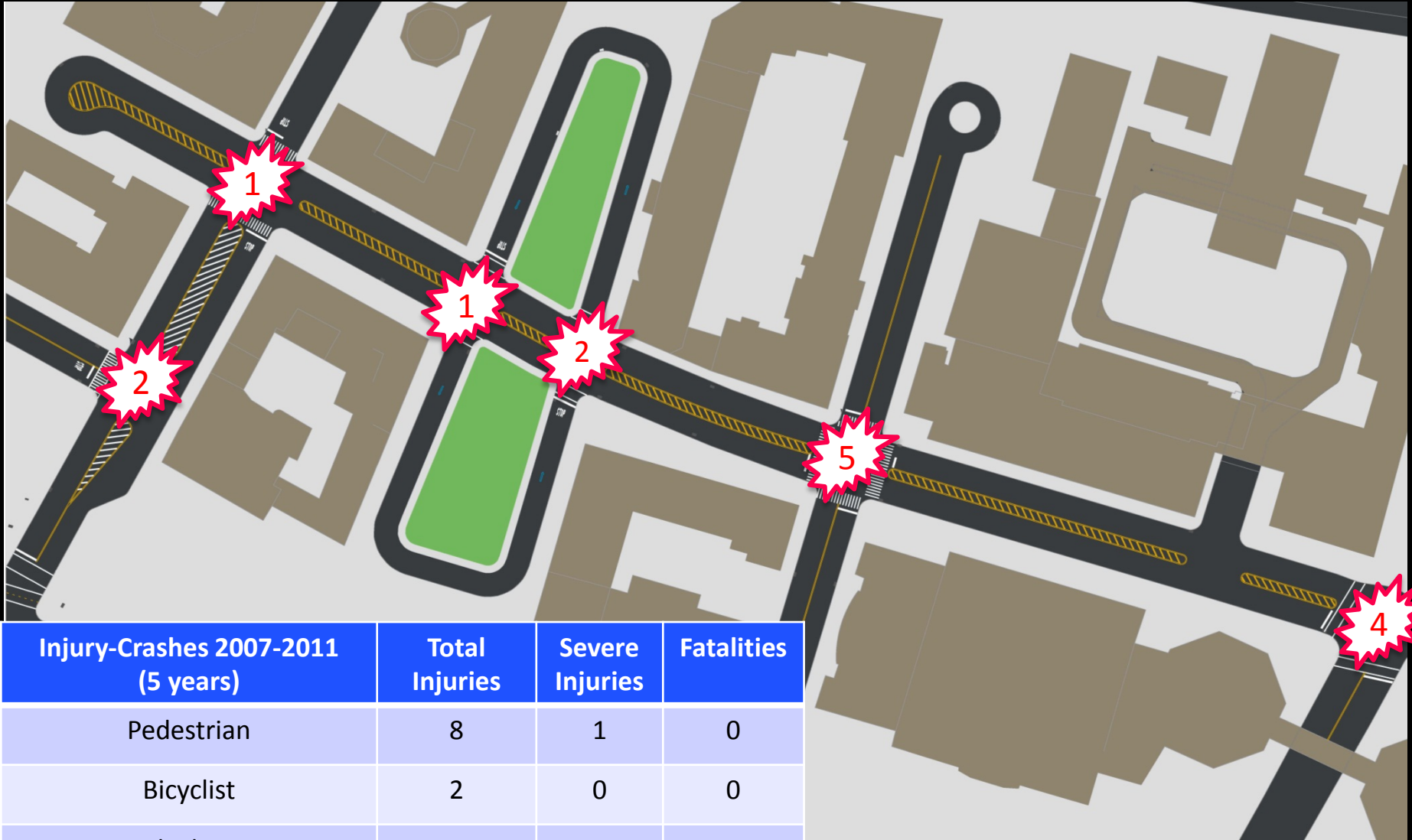
# Background

## Community Request

- Community has requested:
  - Pedestrian safety improvements
  - Better access across South End Ave
  - Traffic calming along South End Ave
  - Reduced double parking and parking in the median

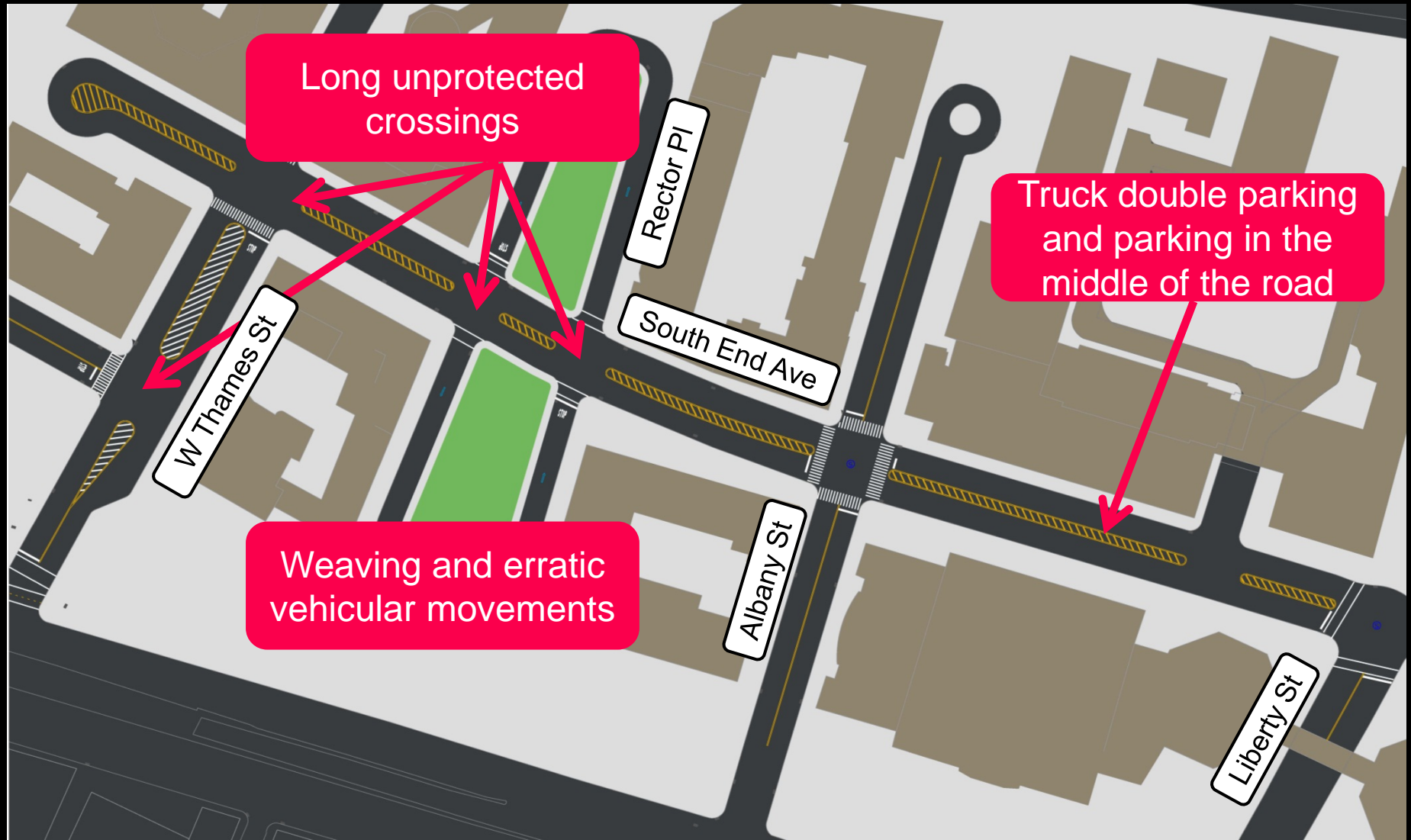


# Crash History



Injury-Crashes 2007-2011 (5 years)	Total Injuries	Severe Injuries	Fatalities
Pedestrian	8	1	0
Bicyclist	2	0	0
Motor Vehicle Occupant	3	0	0
Total	13	1	0

# Existing Issues



# Rapid Response Toolkit

- Pavement markings
- New signage
- Landscaped concrete islands



# Proposed Plan

Yield crosswalks designate where pedestrians should cross South End Ave



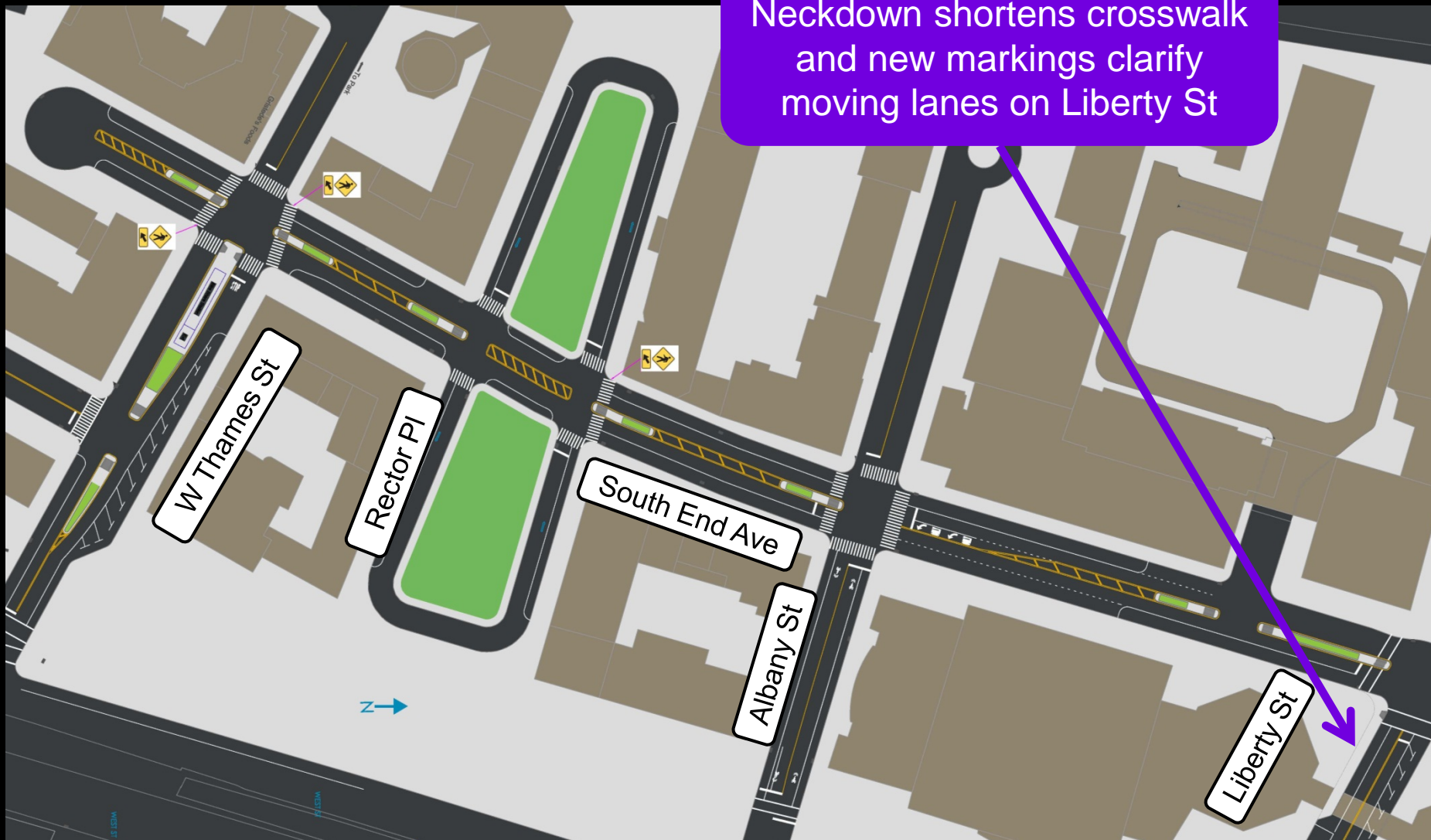
Pedestrian islands provide a safe place for pedestrians to wait while crossing the street





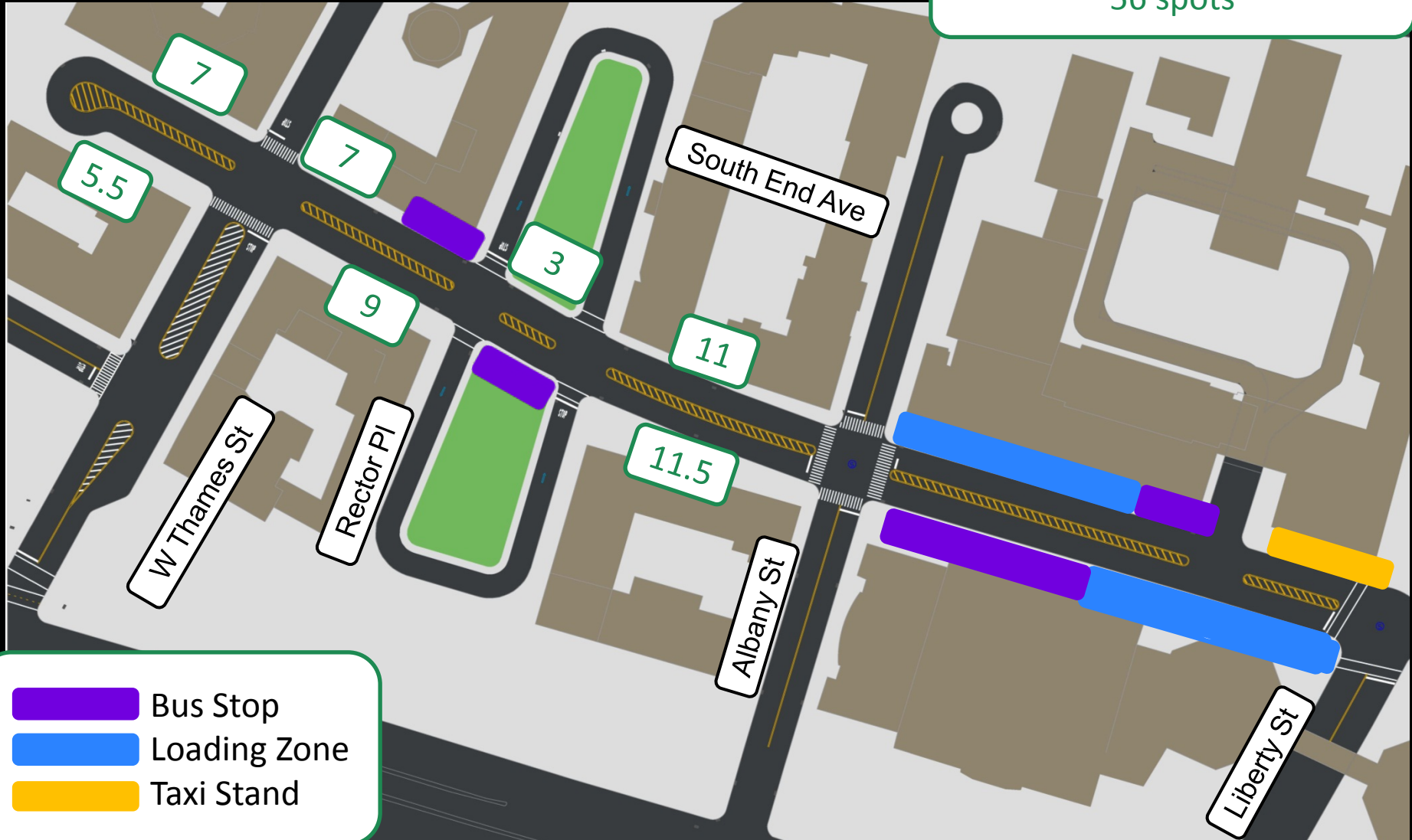
# Proposed Plan

Neckdown shortens crosswalk and new markings clarify moving lanes on Liberty St



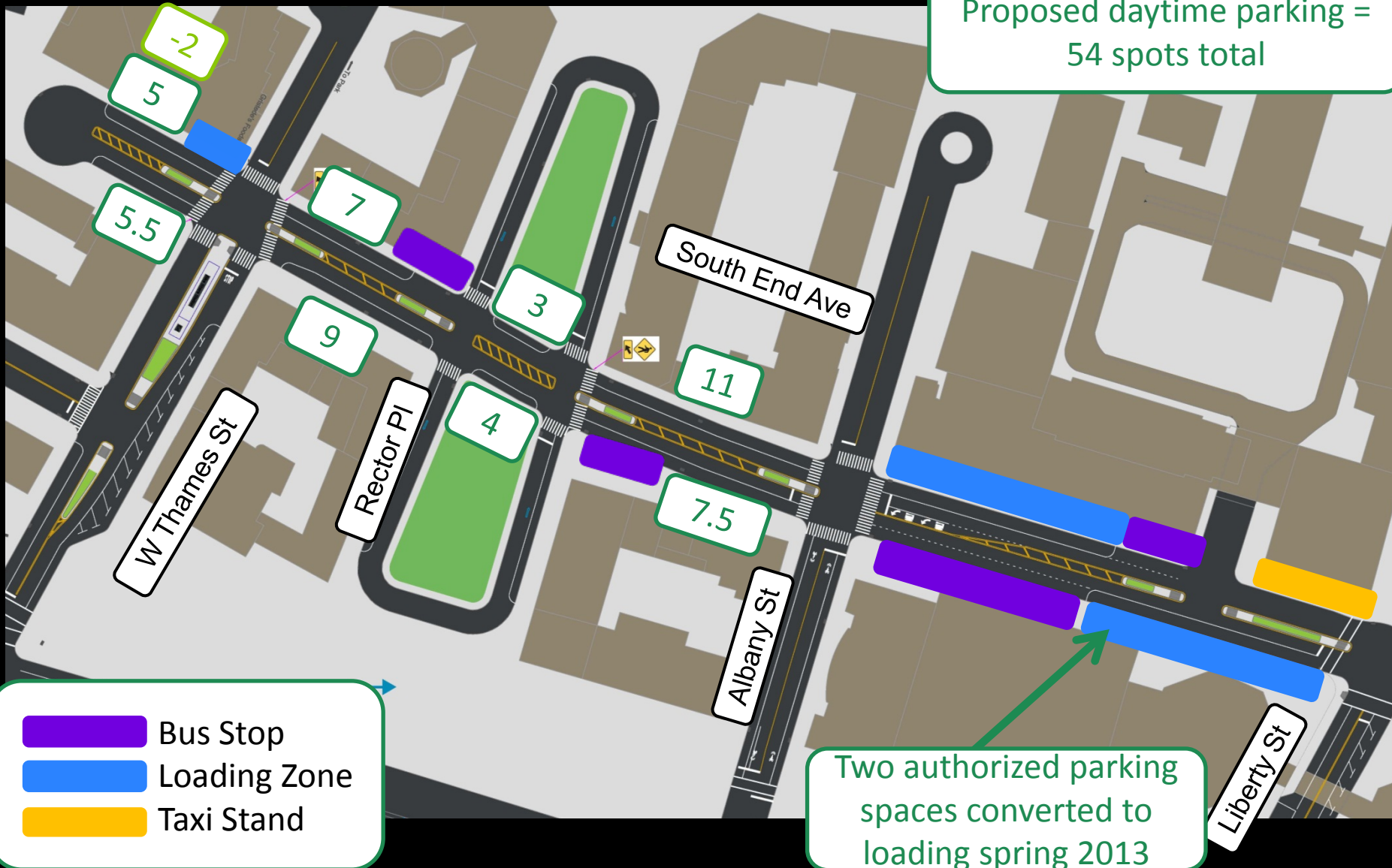
# Existing Parking and Loading

Existing daytime parking =  
56 spots

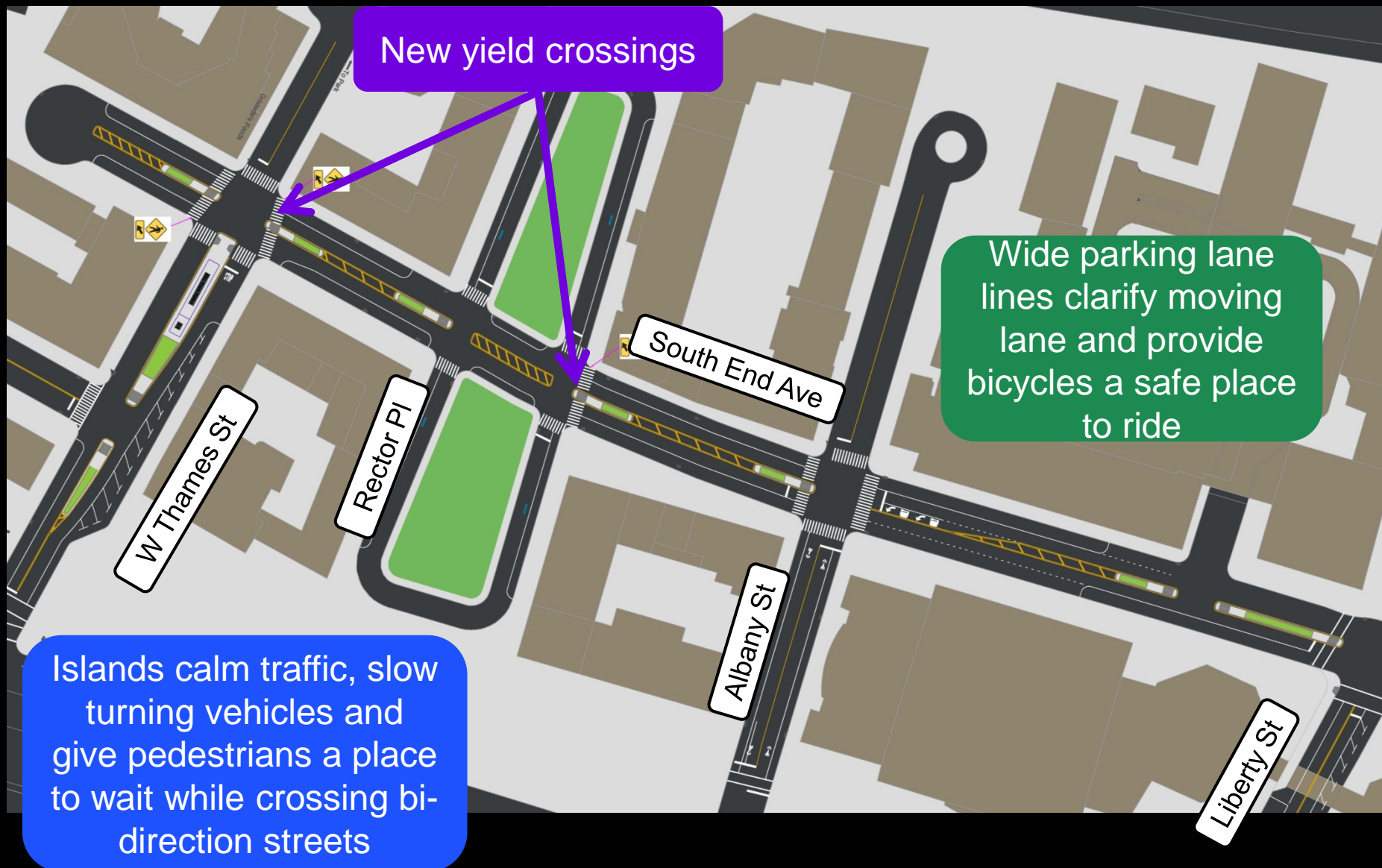


# Parking and Loading Plan

Proposed daytime parking =  
54 spots total



# South End Ave Overview



# Proposed Improvements

- Add concrete islands at the following locations:
  - West Thames between West St and Battery Pl
  - West Thames between Battery Pl and S End Ave
  - S End Ave at W Thames St
  - S End Ave at Rector St (north side)
  - S End Ave at Albany St
  - S End Ave at Gateway Center Entrance
  - S End Ave at Liberty St
- New left turn bay on S End Ave at Albany St
- New neckdown on Liberty St at S End Ave
- New yield crosswalks on S End Ave at W Thames St and Rector St

[nyc.gov/dot](https://nyc.gov/dot)

**Thank  
You**