

Willis Avenue Bridge Connections

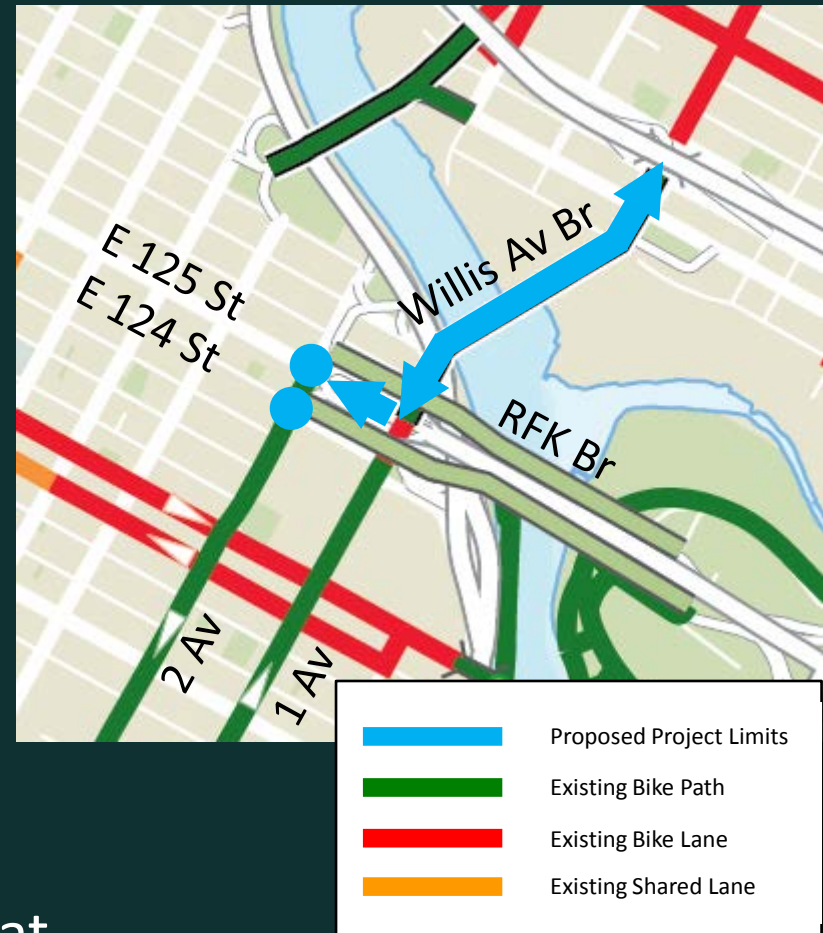


Commissioner Polly Trottenberg New York City Department of Transportation
Presented March 4th, 2014 to Manhattan Community Board 11 Transportation Committee



Project Background

- Willis Ave Bridge replaced in 2012
- New bridge features an upgraded shared bicycle/pedestrian path
- Shared path is unmarked and unsigned
- No southbound connection from bridge to 2nd Ave bicycle path
- RFK Bridge ramp crossings missing at 2nd Ave/E 125th St and 2nd Ave/E 124th St



Existing Conditions: Willis Ave Br. Shared Path

No markings or signage

Willis Avenue Bridge

← 12 feet wide 2-way shared path →

Proposed Condition: Willis Ave Br. Shared Path



Bike stamp



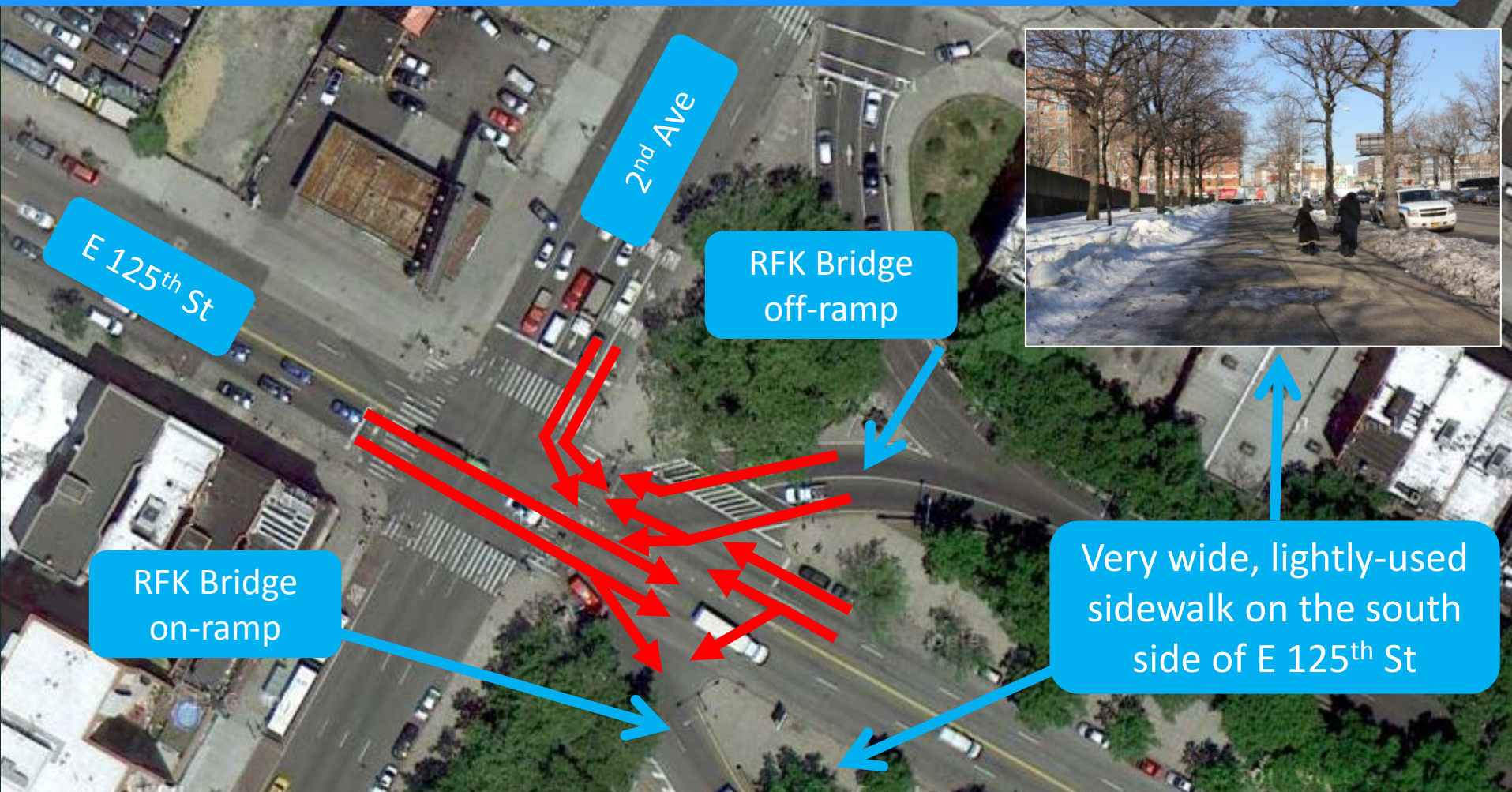
Signage

Existing Conditions: 1st Ave at Willis Ave Bridge



Southbound cyclists often travel against traffic on 1st Ave between Willis Ave Bridge and E 124th St

Existing Conditions: E 125th St at 2nd Ave



- Complex 6-leg intersection with 3-phase signal operation
- Bicycle connection to from Willis Ave Bridge to 2nd Ave bike path via E 125th St is dangerous, fraught with conflicting vehicle paths

Proposed Condition: E 125th St, 1st Ave - 2nd Ave



Bike stamp



Bike stamps on southern half of sidewalk on the south side of E 125th St

Existing Conditions: E 125th St at 2nd Ave

No designated pedestrian crossing of RFK Bridge on-ramp (SE corner)



Proposed Condition: E 125th St at 2nd Ave



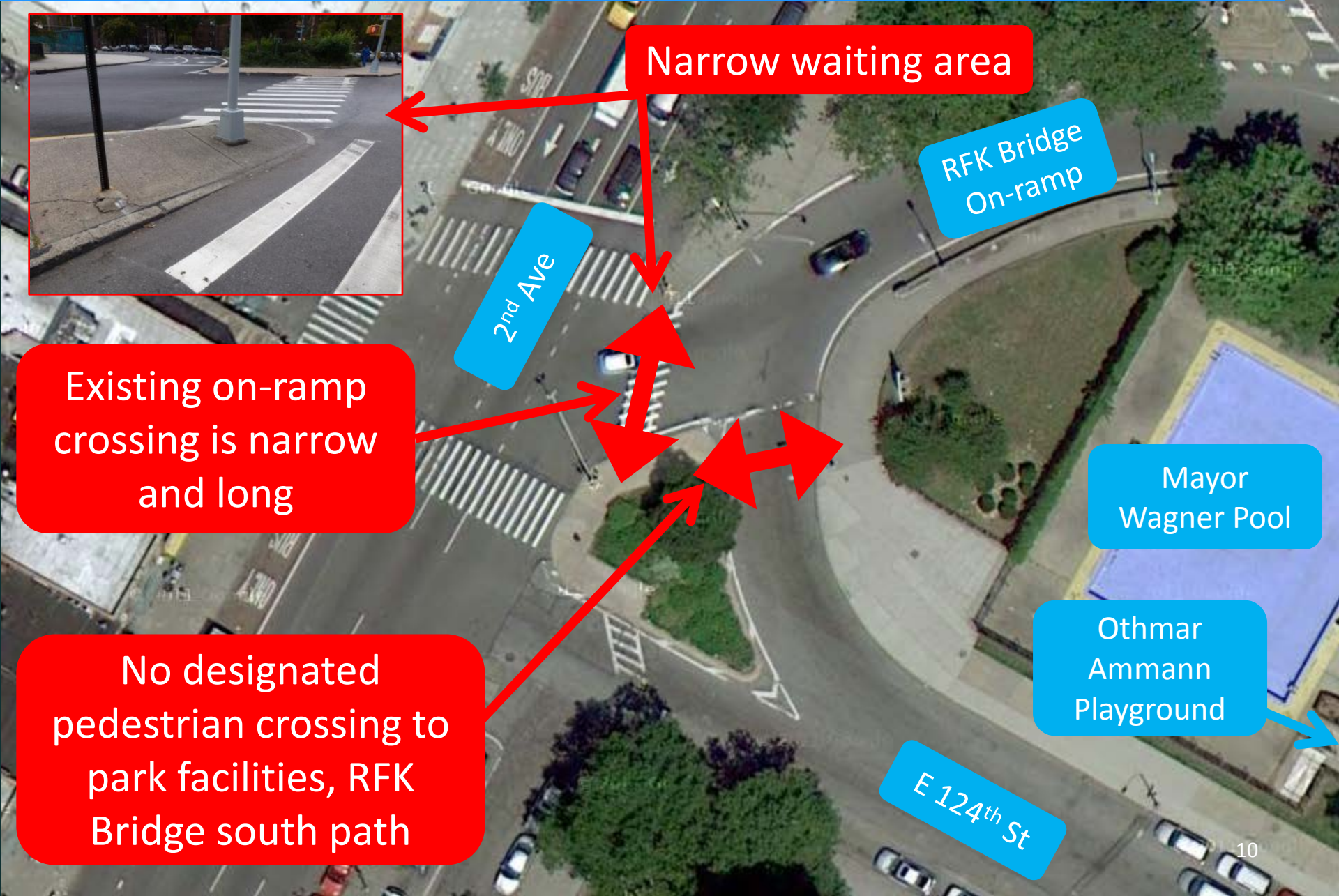
2nd Ave

New crosswalk and pedestrian signal to allow cyclists and pedestrians to safely cross RFK Bridge On-ramp

E 125th St

Curb extension to shorten crossing distance

Existing Conditions: E 124th St at 2nd Ave



Narrow waiting area

RFK Bridge On-ramp

2nd Ave

Existing on-ramp crossing is narrow and long

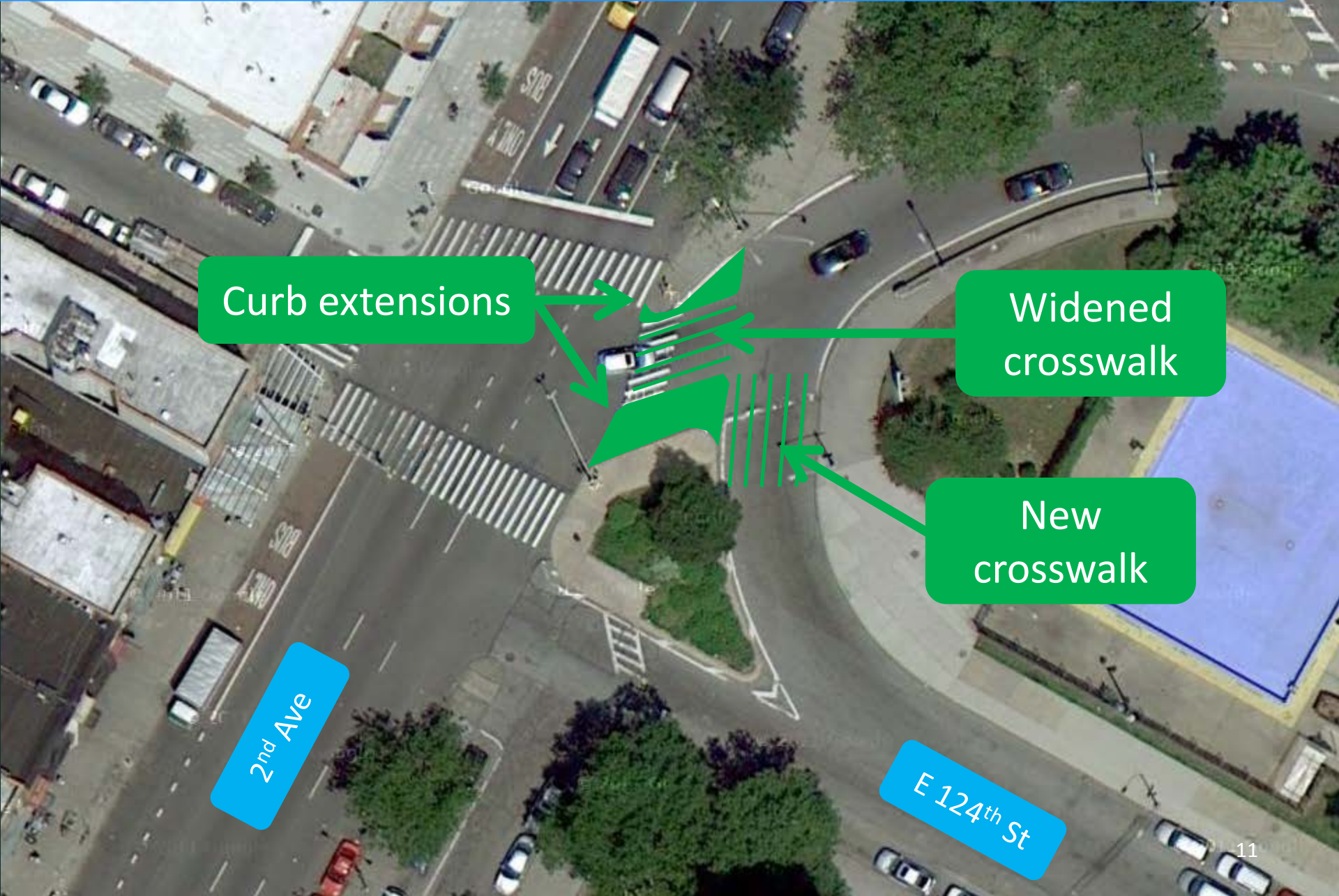
No designated pedestrian crossing to park facilities, RFK Bridge south path

Mayor Wagner Pool

Othmar Ammann Playground

E 124th St

Proposed Conditions: E 124th St at 2nd Ave



Curb extensions

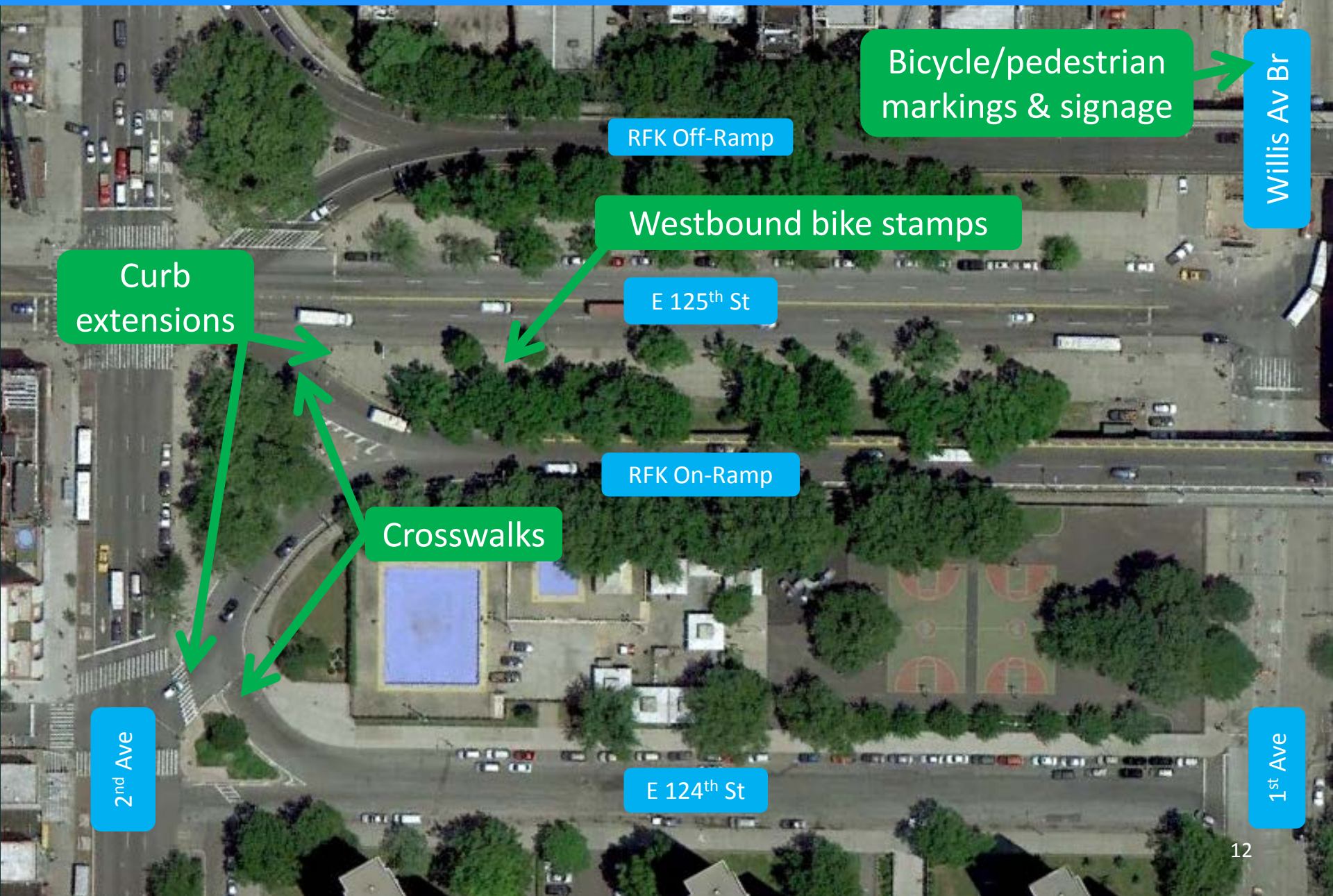
Widened crosswalk

New crosswalk

2nd Ave

E 124th St

Summary of Proposals



Curb extensions

Crosswalks

Westbound bike stamps

Bicycle/pedestrian markings & signage

2nd Ave

RFK Off-Ramp

E 125th St

RFK On-Ramp

E 124th St

Willis Av Br

1st Ave

Project Benefits

- Organizes bicyclists and pedestrians on Willis Ave Bridge
- Designates a safe route for southbound cyclists to connect from the bridge to the 2nd Ave bicycle path
- Increases safety for pedestrians crossing the RFK Bridge ramps
- Increases pedestrian connectivity by providing a safe connection to park facilities

Questions?

Thank
You