

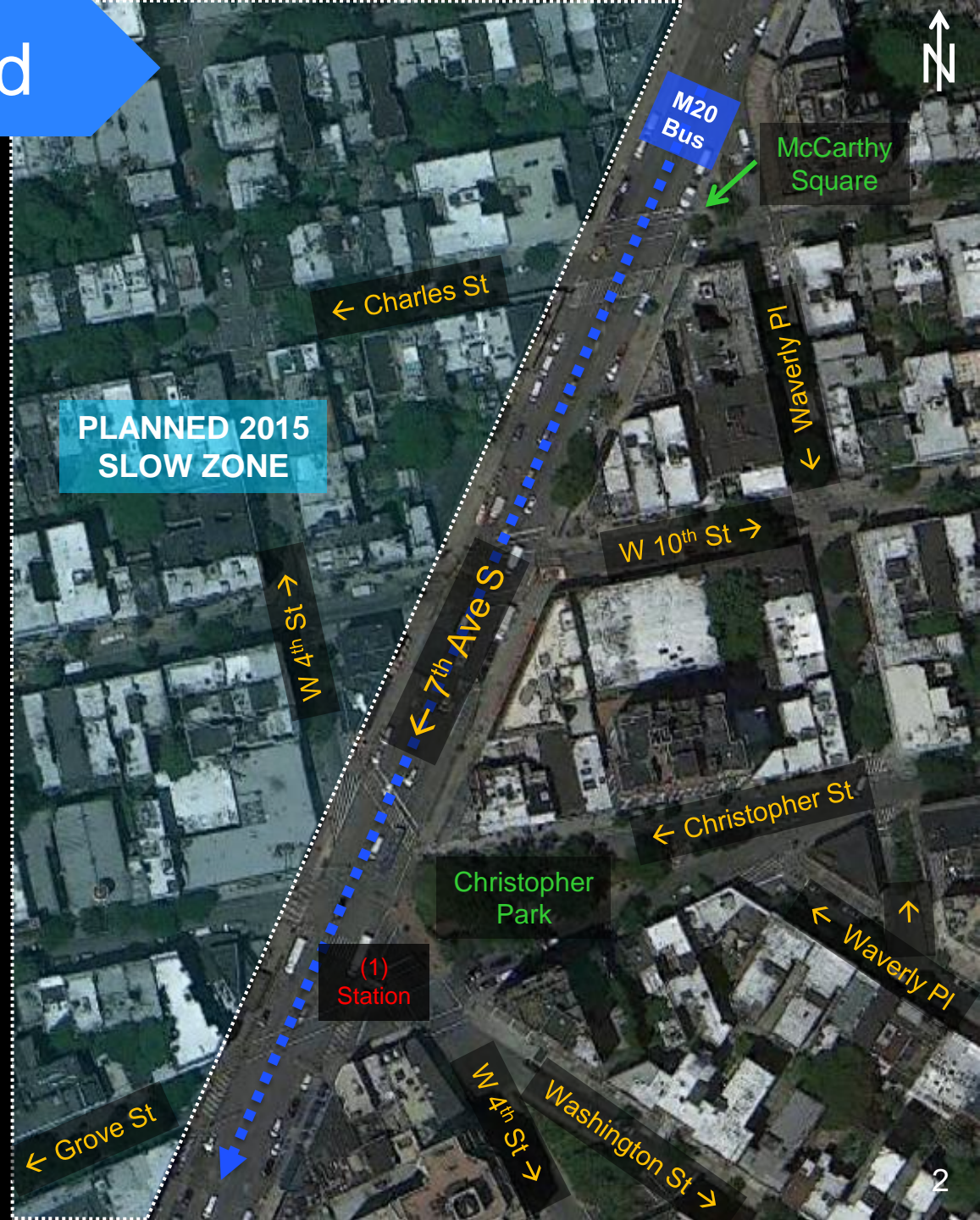
7th Avenue S at W 4th St Intersection Safety Improvements

2015



Project Background

- May 2010: CB2 resolution asking for pedestrian improvements at intersection of 7th Ave S and Christopher St/W 4th St and Grove St
- September 2012: NYPD requested closure of W 4th St between 7th Ave S and Grove St to improve safety
- September 2014: CB2 resolution requesting complete street study on 7th Ave between W 14th St and Canal St
- January 2015: CB2 resolution in support of Waverly Pl closure and new crosswalk at Christopher St
- 2015 (planned): DOT to implement Neighborhood Slow Zone west of 7th Ave S



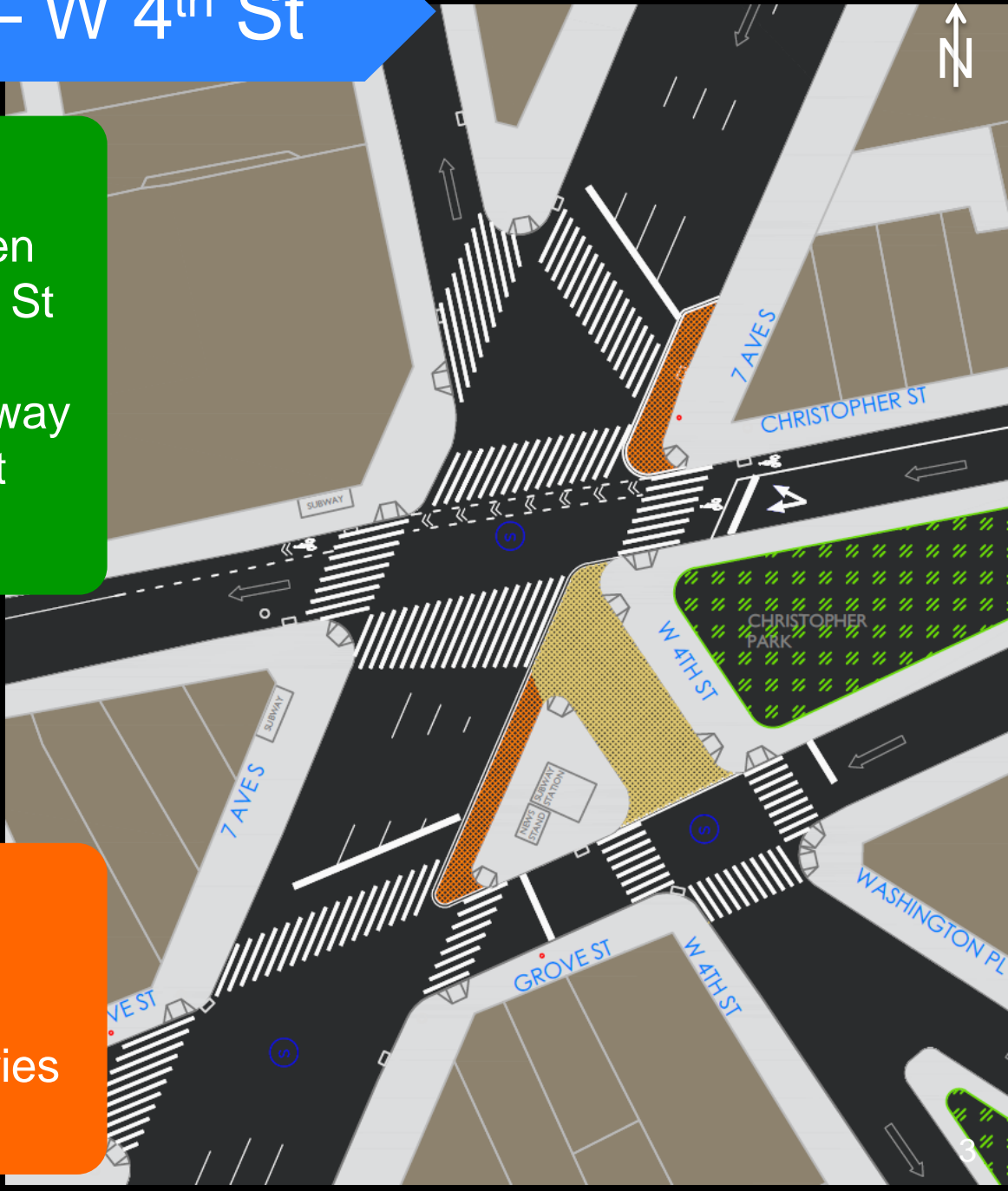
Original Proposal – W 4th St

Expected Benefits:

- Eliminates conflicts between pedestrians crossing W 4th St and turning vehicles
- Connects constrained subway entrance island to adjacent pedestrian spaces

Community Concerns:

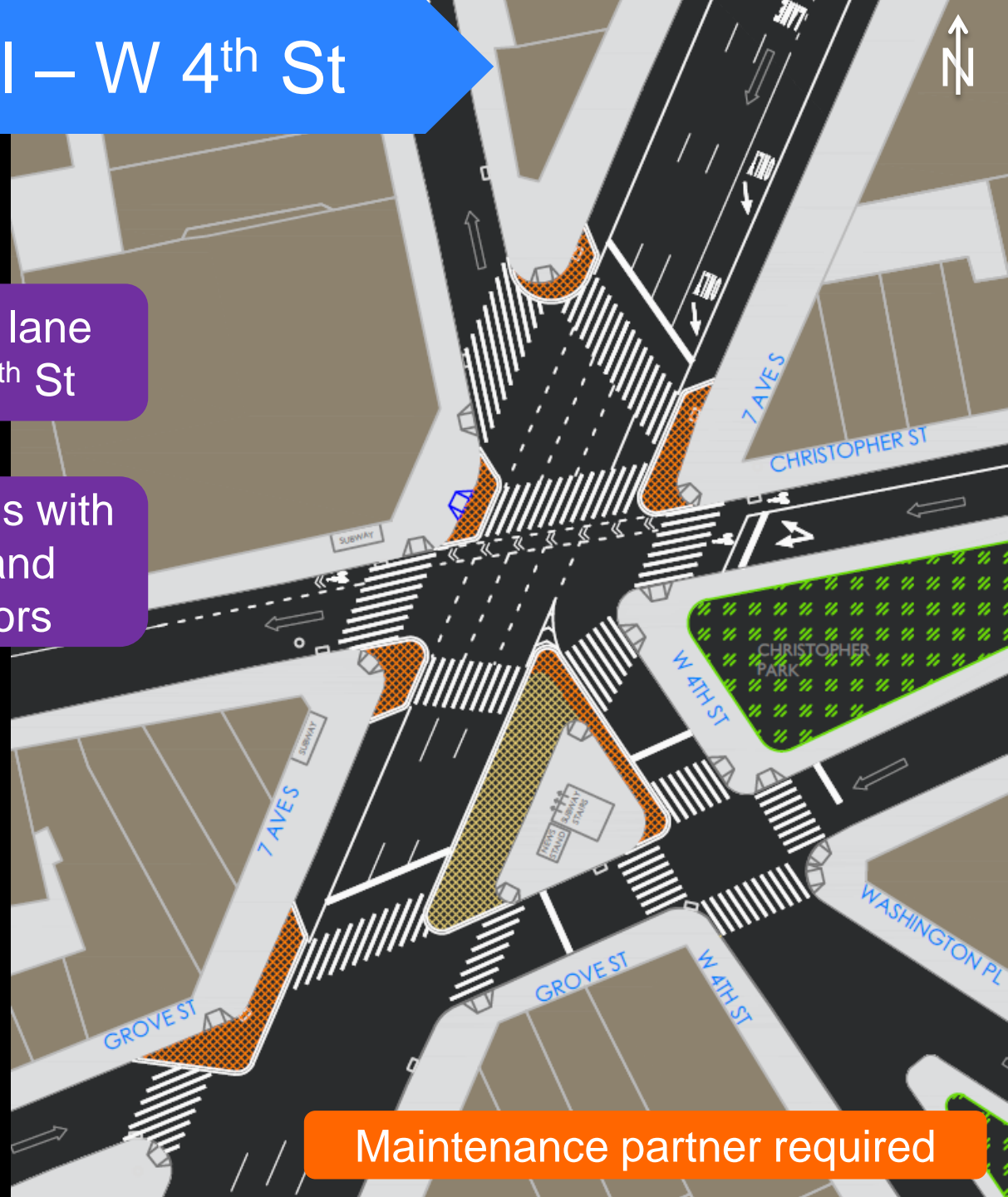
- Vehicles diverted to other congested streets
- Limitations on truck deliveries to W 4th St



Revised Proposal – W 4th St

Mark left turn only lane
approaching W 4th St

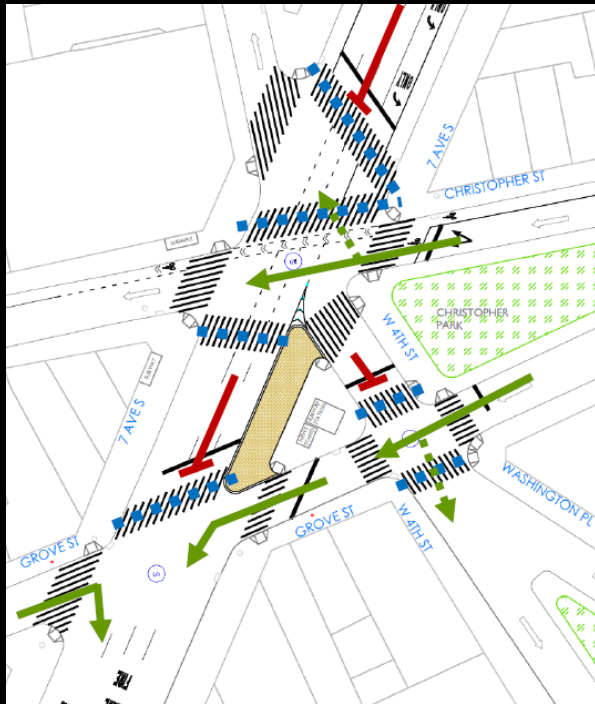
Sidewalk extensions with
epoxied gravel and
flexible delineators



Maintenance partner required

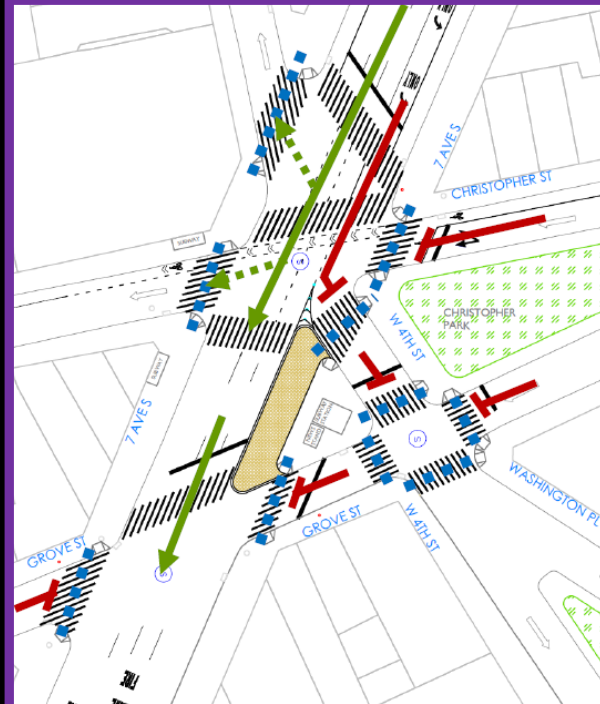
Proposal – Signals

No conflicting
pedestrian signals



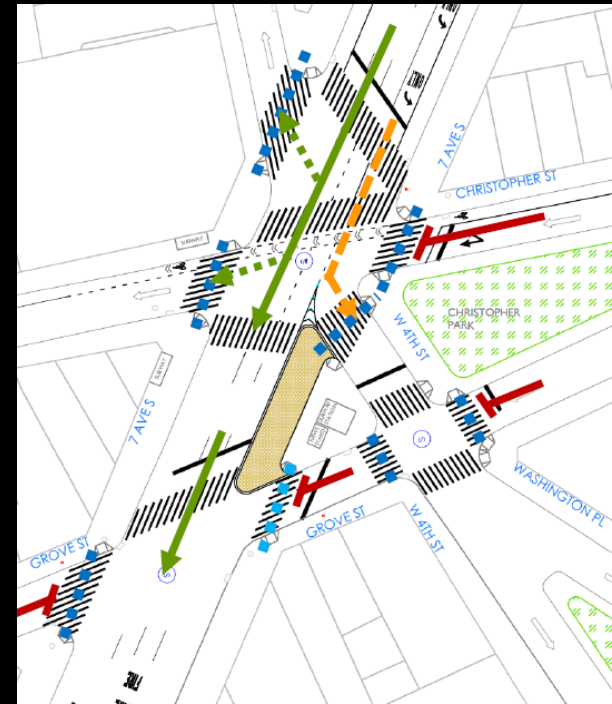
Christopher St & Grove St
35 sec

16 sec leading
pedestrian interval (LPI)



7th Ave S: Thru
16 sec

Flashing yellow
arrow for left turn



7th Ave S: Thru & left turn
39 sec

Coordinate Christopher St and Grove St to
ensure vehicles clear the intersection

Expected Benefits

- Consistent pedestrian signals along 7th Ave S
- 16 seconds of conflict free pedestrian time crossing W 4th St
- Designated left turn lane clarifies vehicular movements and allows for significantly expanded subway triangle
- Shortens pedestrian crossing distances
- Right-sized road widths calms traffic and slows turning vehicles



Maintenance partner required

A photograph of a busy New York City street intersection. In the center, a yellow school bus is stopped at a crosswalk. A large group of pedestrians is crossing the street in front of the bus. To the right, a red van is parked. The background features tall brick buildings with many windows. A blue banner is at the bottom left, and a green circle is at the bottom right.

nyc.gov/dot

Thank
You