

# Reconfiguration of Albee Square and DeKalb Avenue Restricted-Use Street

November 18, 2008



NYC Economic Development Corporation  
NYC Department of Transportation

■ STV | EDRAW | AECOM

Reconfiguration of Albee Square

# PRESENTATION OVERVIEW

- NYC DOT Introduction
- Background
- Proposed Plan
- Traffic Operations
- Pedestrian Conditions
- Safety
- Bus Operations

NYC Economic Development Corporation  
NYC Department of Transportation



EDAW

AECOM

Reconfiguration of Albee Square

# FULTON MALL STREETScape: ALBEE SQUARE

- **Improved Streetscape:** restored concrete sidewalk, new street furniture: public seating, bicycle racks, street and pedestrian lighting, street trees, and historical signage
- **Public Open Space:** new public seating, plaza lighting, trees and planting
- **New DOT- Cemusa Bus shelters**
- **Total New Area of Plaza:** 18,490 square feet
- **Total Project Budget:** \$12,500,000
- **Anticipated Construction Completion:** Winter 2011

NYC Economic Development Corporation  
NYC Department of Transportation



EDAW

AECOM



# Reconfiguration of Albee Square

## ALBEE SQUARE: Location Plan



NYC Economic Development Corporation  
NYC Department of Transportation



EDAW

AECOM



Reconfiguration of Albee Square

# ALBEE SQUARE: Aerial



NYC Economic Development Corporation  
NYC Department of Transportation



EDAW

AECOM

## Reconfiguration of Albee Square

# ALBEE SQUARE: Existing Conditions



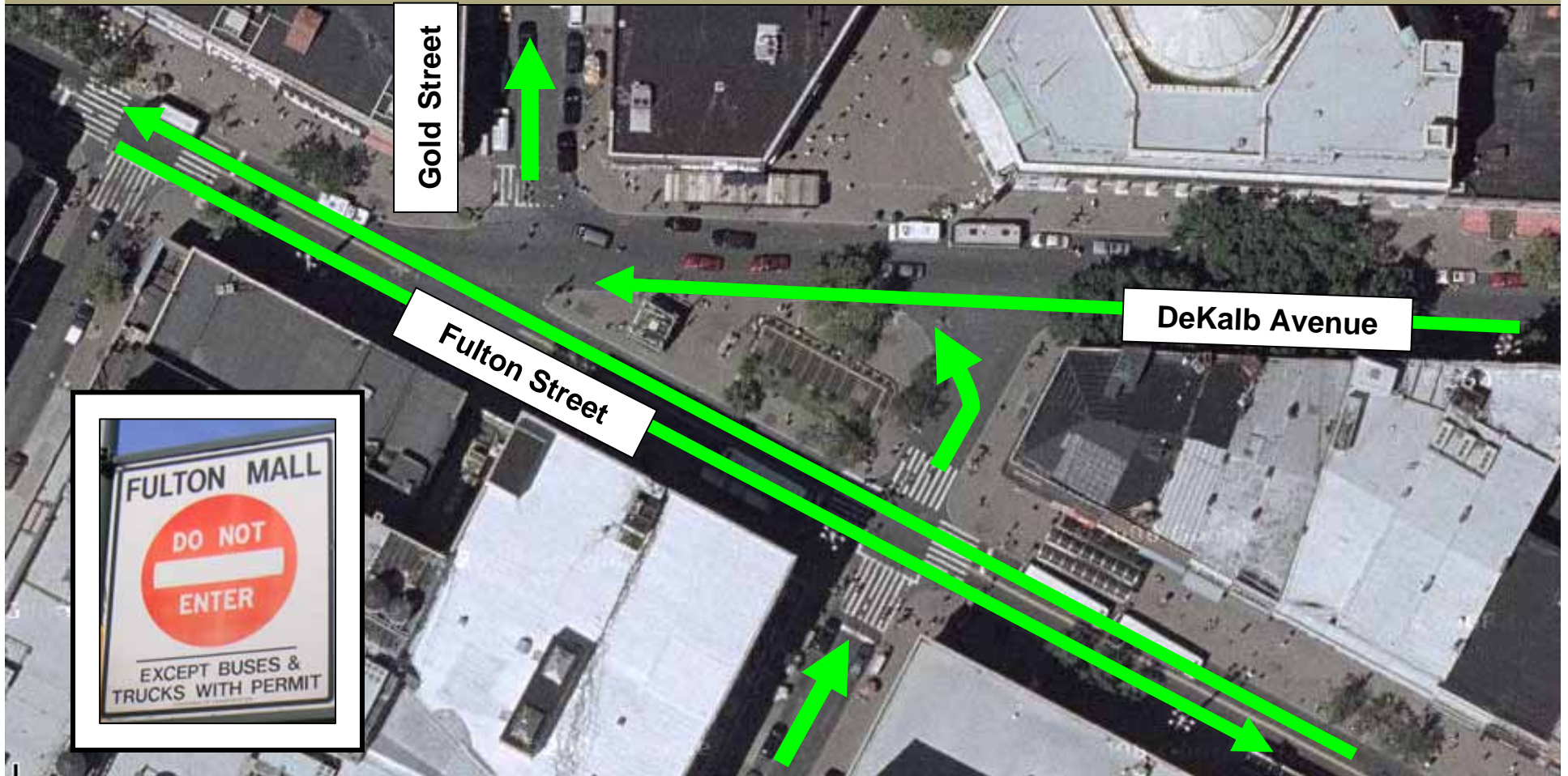
NYC Economic Development Corporation  
NYC Department of Transportation

STV | EDAW | AECOM



# Reconfiguration of Albee Square

## ALBEE SQUARE: Existing Traffic Movements



NYC Economic Development Corporation  
NYC Department of Transportation

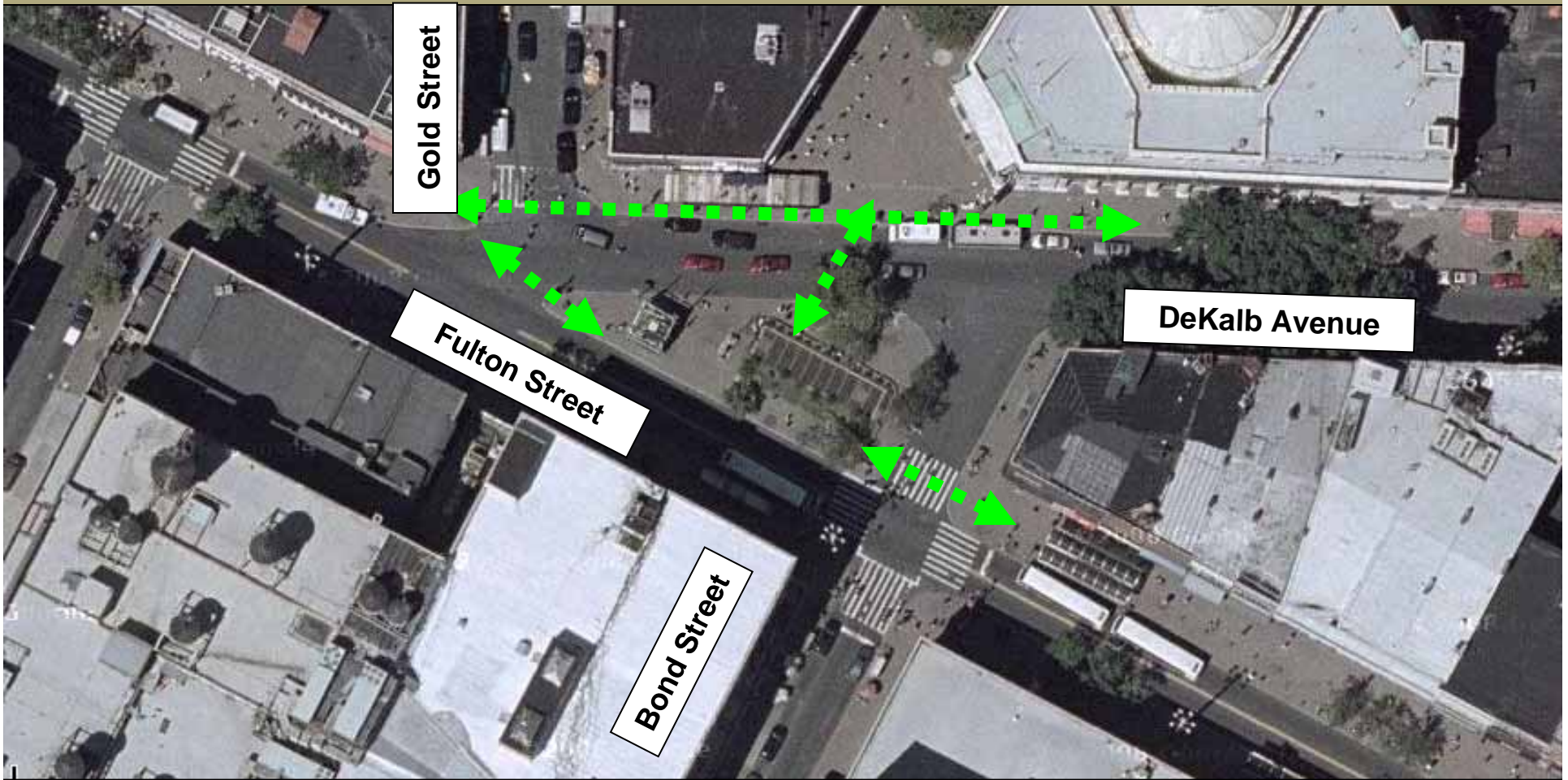
STV

EDAW

AECOM

Reconfiguration of Albee Square

# ALBEE SQUARE: Existing Pedestrian Movement



NYC Economic Development Corporation  
NYC Department of Transportation



EDAW

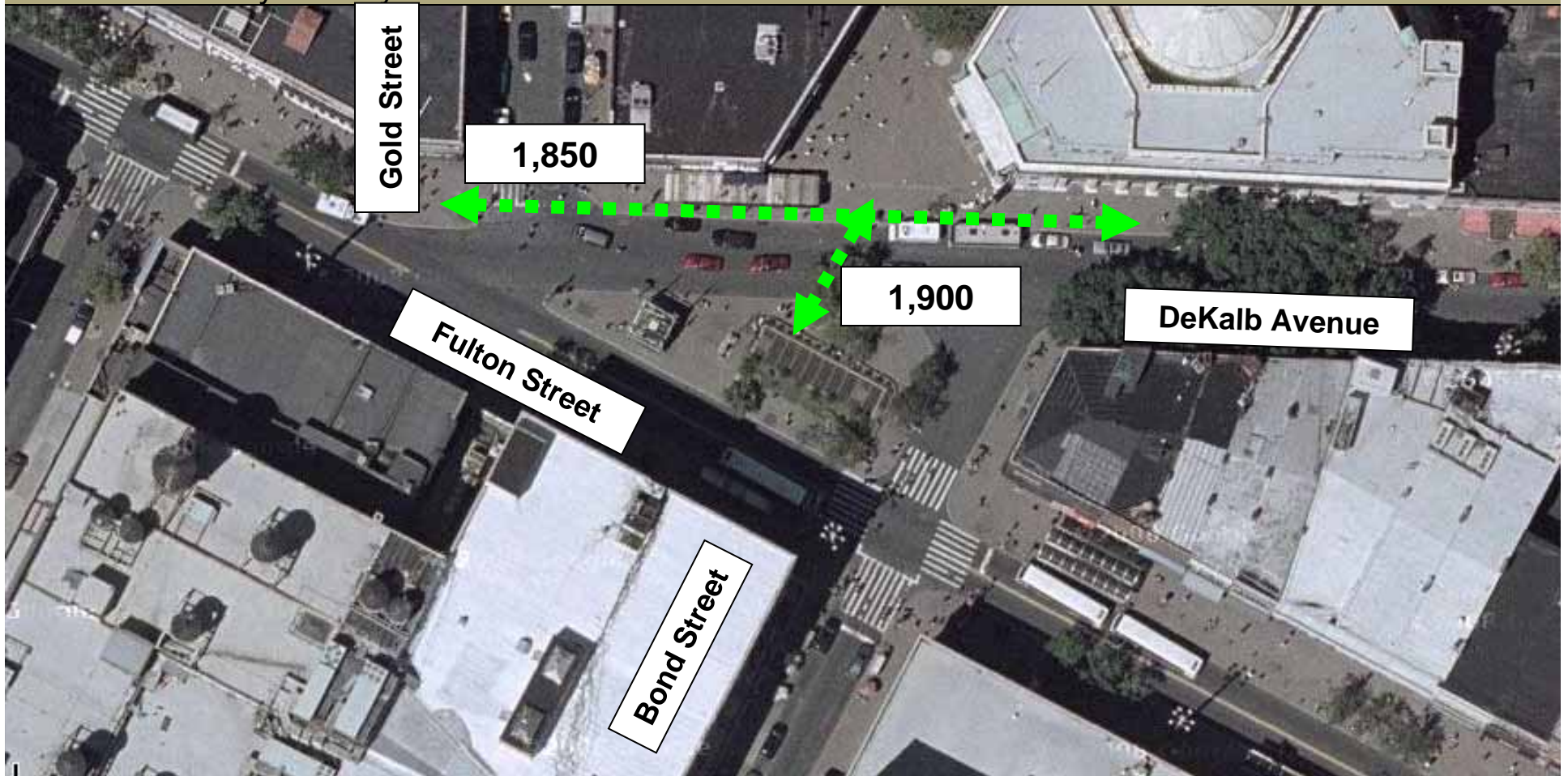
AECOM



## Reconfiguration of Albee Square

# ALBEE SQUARE: Existing Pedestrian Volumes

Saturday Midday Peak Hour



NYC Economic Development Corporation  
NYC Department of Transportation

STV

EDAW

AECOM

Reconfiguration of Albee Square

# ALBEE SQUARE: Pedestrian Movements



NYC Economic Development Corporation  
NYC Department of Transportation

STV

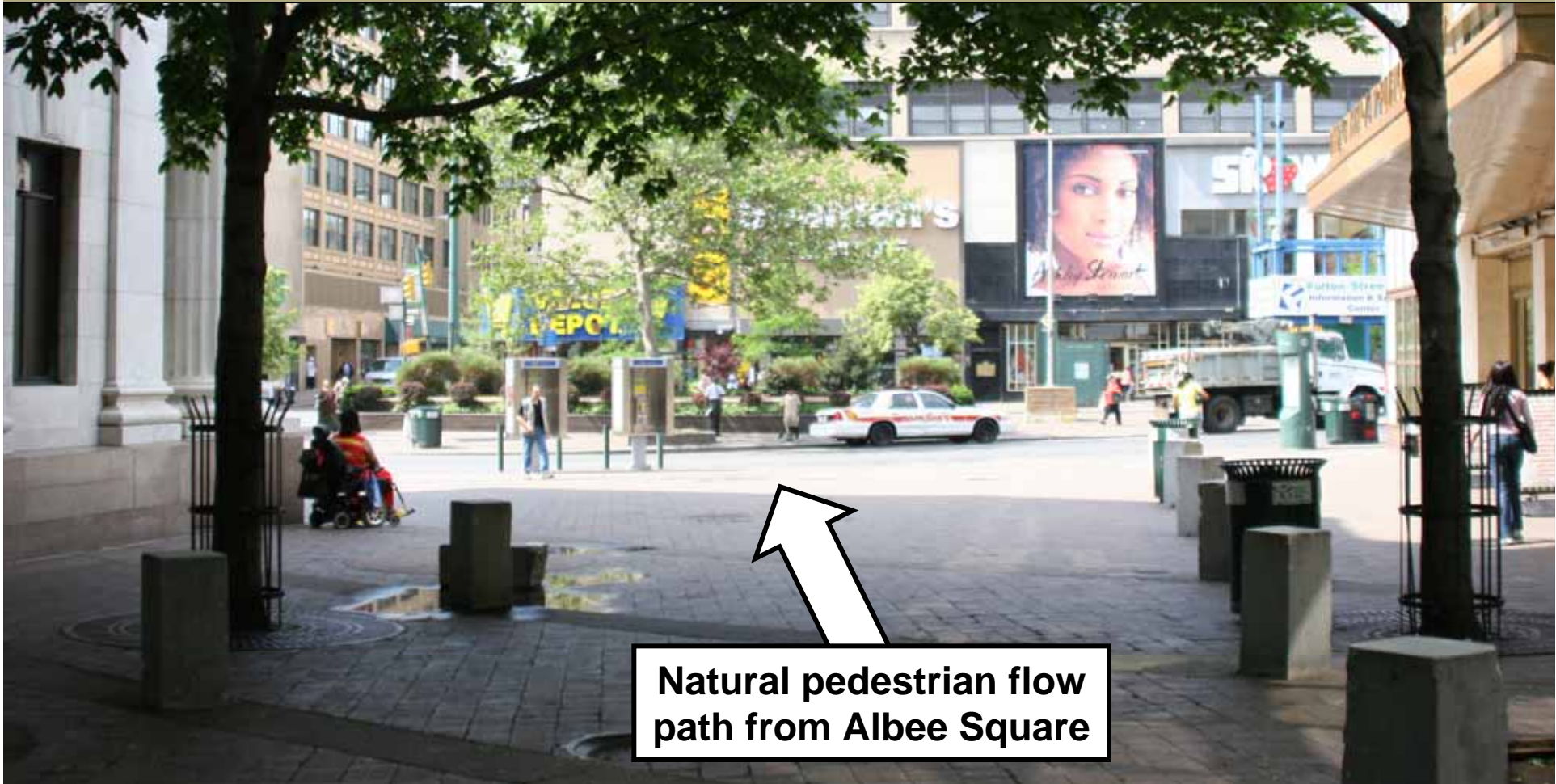
EDAW

AECOM



Reconfiguration of Albee Square

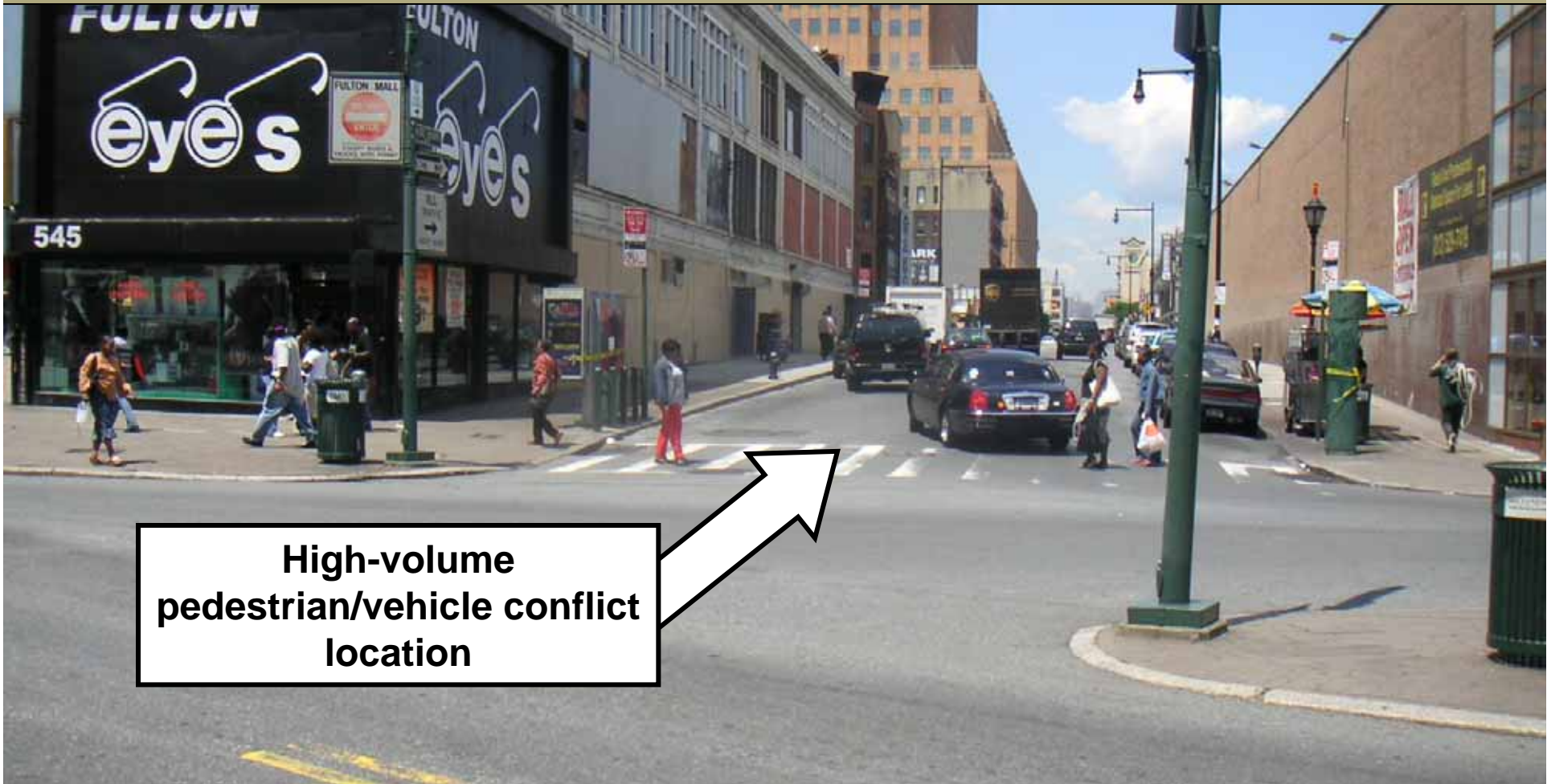
# ALBEE SQUARE: Pedestrian Movements



Natural pedestrian flow path from Albee Square

Reconfiguration of Albee Square

# ALBEE SQUARE: Pedestrian Movements/Safety



**High-volume  
pedestrian/vehicle conflict  
location**



Reconfiguration of Albee Square

# ALBEE SQUARE: Pedestrian Movements/Safety



**Only signage controls vehicle yielding to pedestrians.**

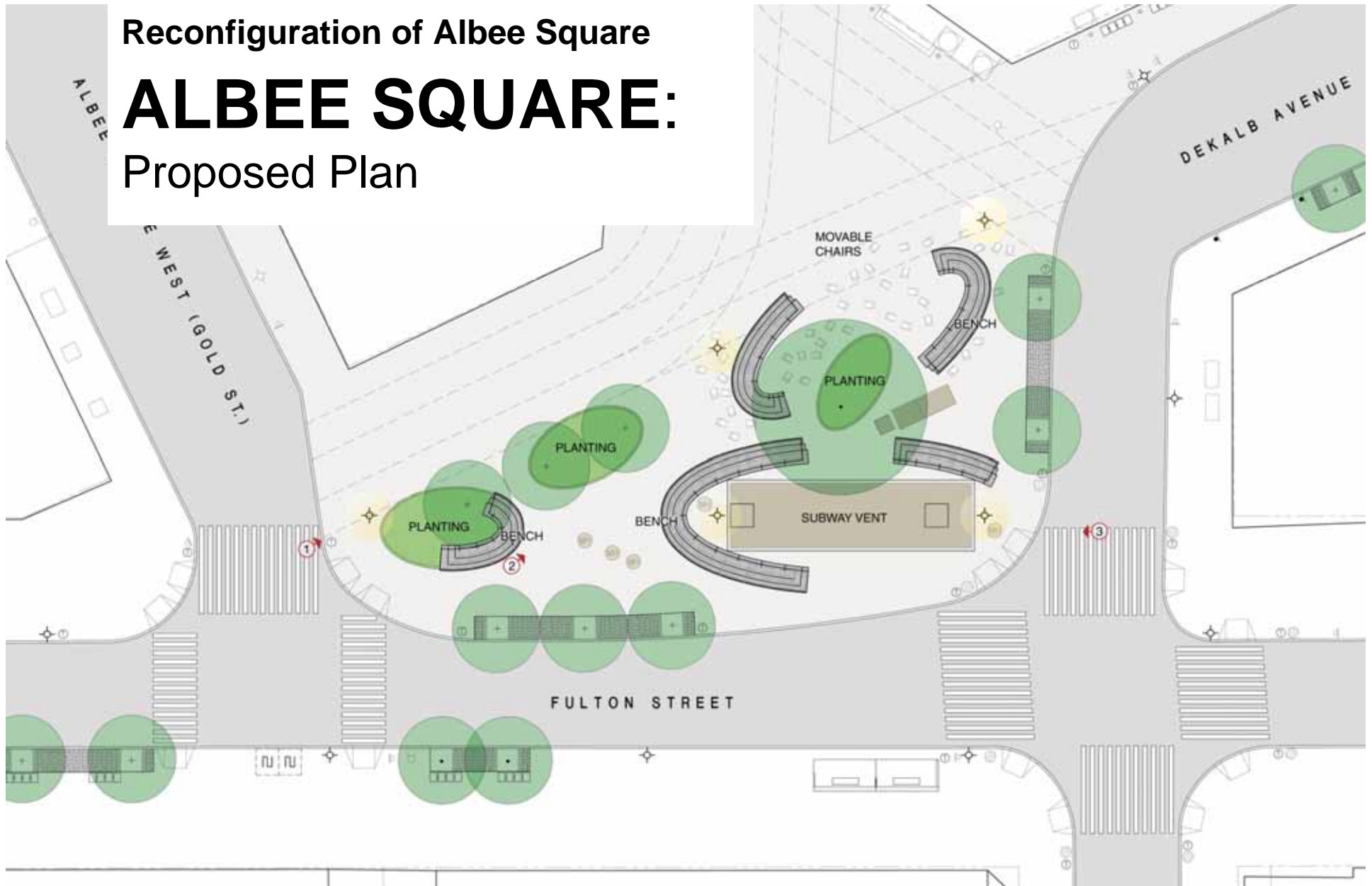
NYC Economic Development Corporation  
NYC Department of Transportation

STV | EDRAW | AECOM

Reconfiguration of Albee Square

# ALBEE SQUARE:

## Proposed Plan



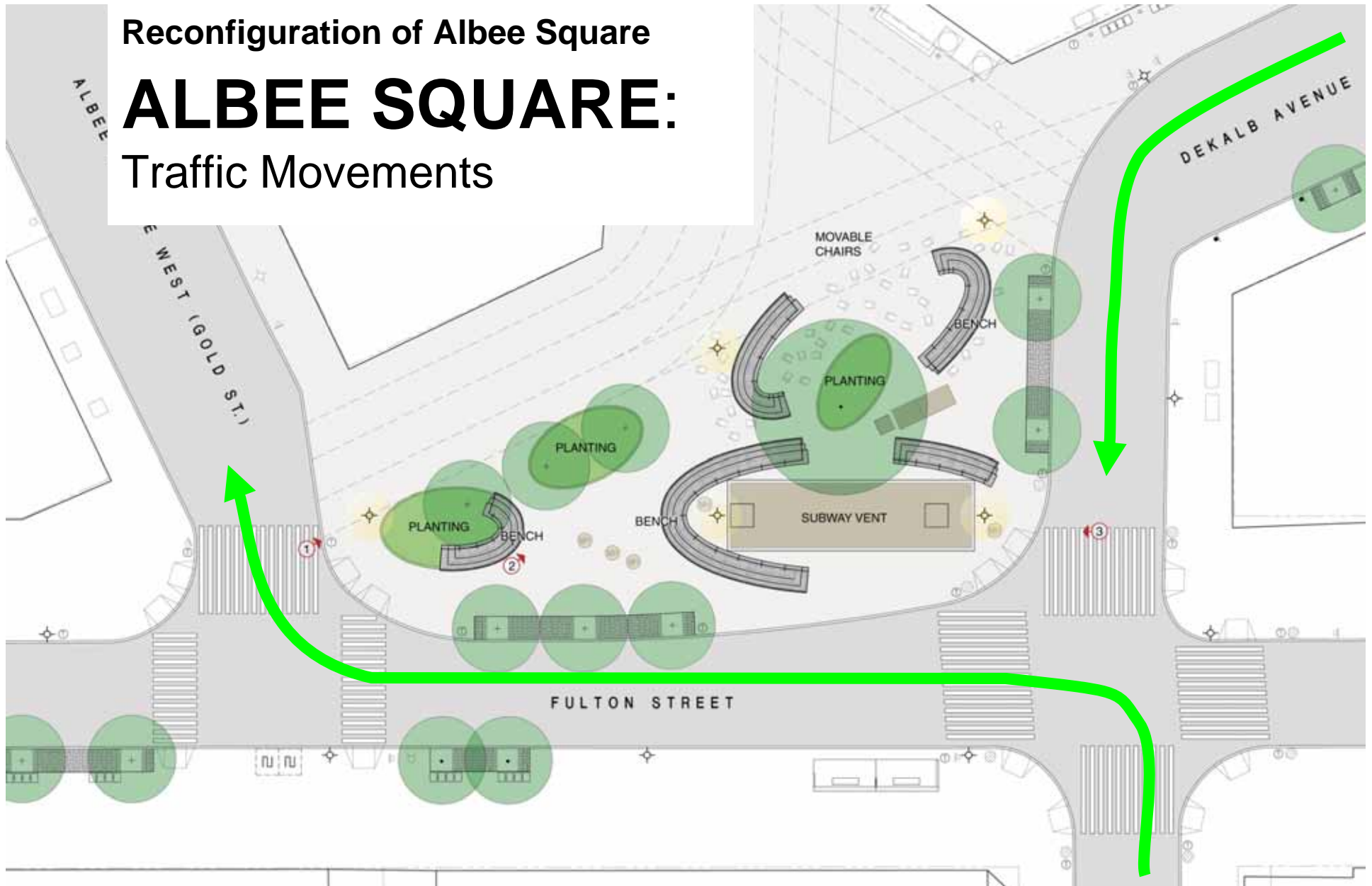
NYC Economic Development Corporation  
NYC Department of Transportation

STV | EDRAW | AECOM



# Reconfiguration of Albee Square

## ALBEE SQUARE: Traffic Movements



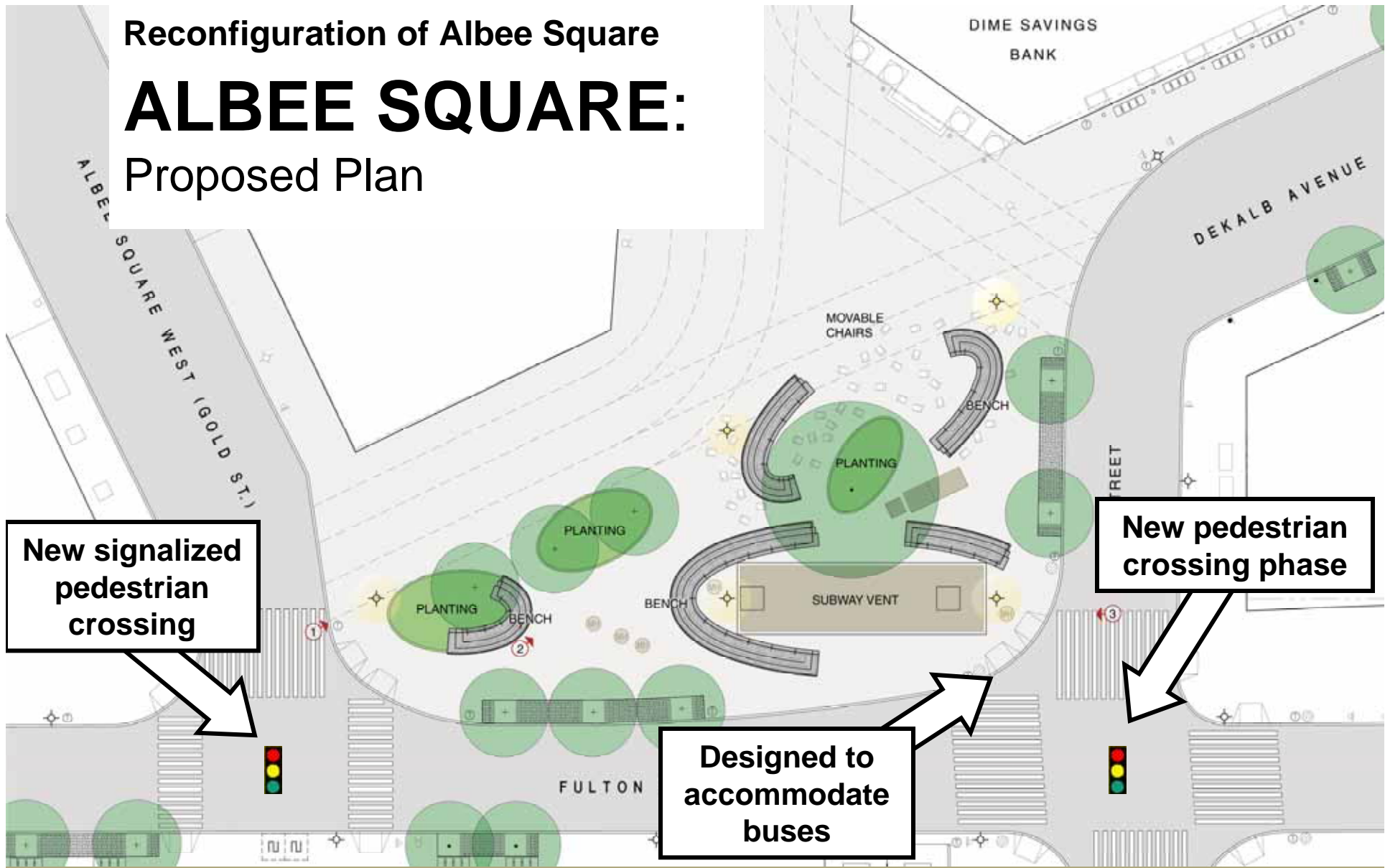
NYC Economic Development Corporation  
NYC Department of Transportation

STV | EDRAW | AECOM

# Reconfiguration of Albee Square

# ALBEE SQUARE:

## Proposed Plan



**New signaled pedestrian crossing**

**New pedestrian crossing phase**

**Designed to accommodate buses**



Reconfiguration of Albee Square

# ALBEE SQUARE:

NYC Transit Authority Field Test for B38 using exact design measurements



NYC Economic Development Corporation  
NYC Department of Transportation



EDAW

AECOM

Reconfiguration of Albee Square

# ALBEE SQUARE:

Existing Traffic Level of Service



NYC Economic Development Corporation  
NYC Department of Transportation



EDAW

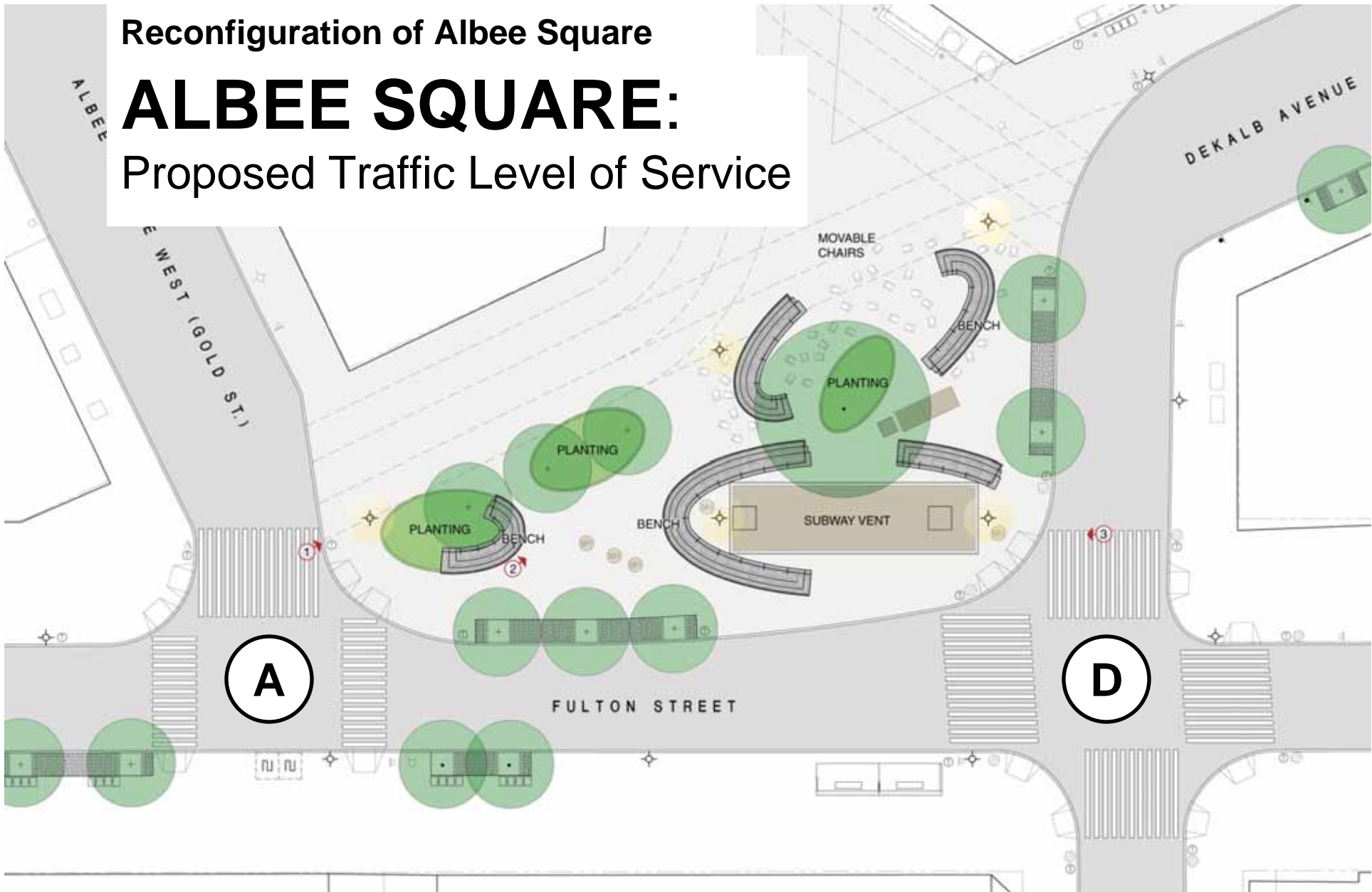
AECOM



Reconfiguration of Albee Square

# ALBEE SQUARE:

Proposed Traffic Level of Service



Reconfiguration of Albee Square

# ALBEE SQUARE: Proposed Traffic Operations



NYC Economic Development Corporation  
NYC Department of Transportation

STV | EDRAW | AECOM



## Reconfiguration of Albee Square

# EAS CATEGORIES EXAMINED:

- Infrastructure
- Solid Waste/Sanitation Services
- Energy
- Traffic and Parking
- Pedestrians and Transit
- Air Quality
- Noise
- Construction
- Public Health
- Land Use, Zoning, Public Policy
- Socioeconomic Conditions
- Community Facilities and Services
- Open Space
- Shadows
- Historic and Cultural Resources
- Urban Design/Visual Resources
- Neighborhood Character
- Natural Resources
- Hazardous Materials
- Waterfront Revitalization Program

NYC Economic Development Corporation  
NYC Department of Transportation



EDAW

AECOM

## Reconfiguration of Albee Square

# SUMMARY OF FINDINGS

### Traffic

- Maintains acceptable traffic LOS conditions and improves safety by reducing the high-volume vehicle/pedestrian conflicts
- Emergency access paths would be maintained

### Pedestrians

- Increased safety – new protected pedestrian crossing phases
- Improved pedestrian connections at crosswalks
- Expanded and more accessible public space

### Transit

- Curb radius designed to accommodate NYCT Buses
- No relocation of bus stops



# Reconfiguration of Albee Square

# ALBEE SQUARE: View From Gold Street Looking East



**NYC Economic Development Corporation**  
**NYC Department of Transportation**



**EDAW**

**AECOM**

## Reconfiguration of Albee Square

# ALBEE SQUARE: View Looking East toward DeKalb Avenue



**NYC Economic Development Corporation**  
**NYC Department of Transportation**



**EDAW**

**AECOM**