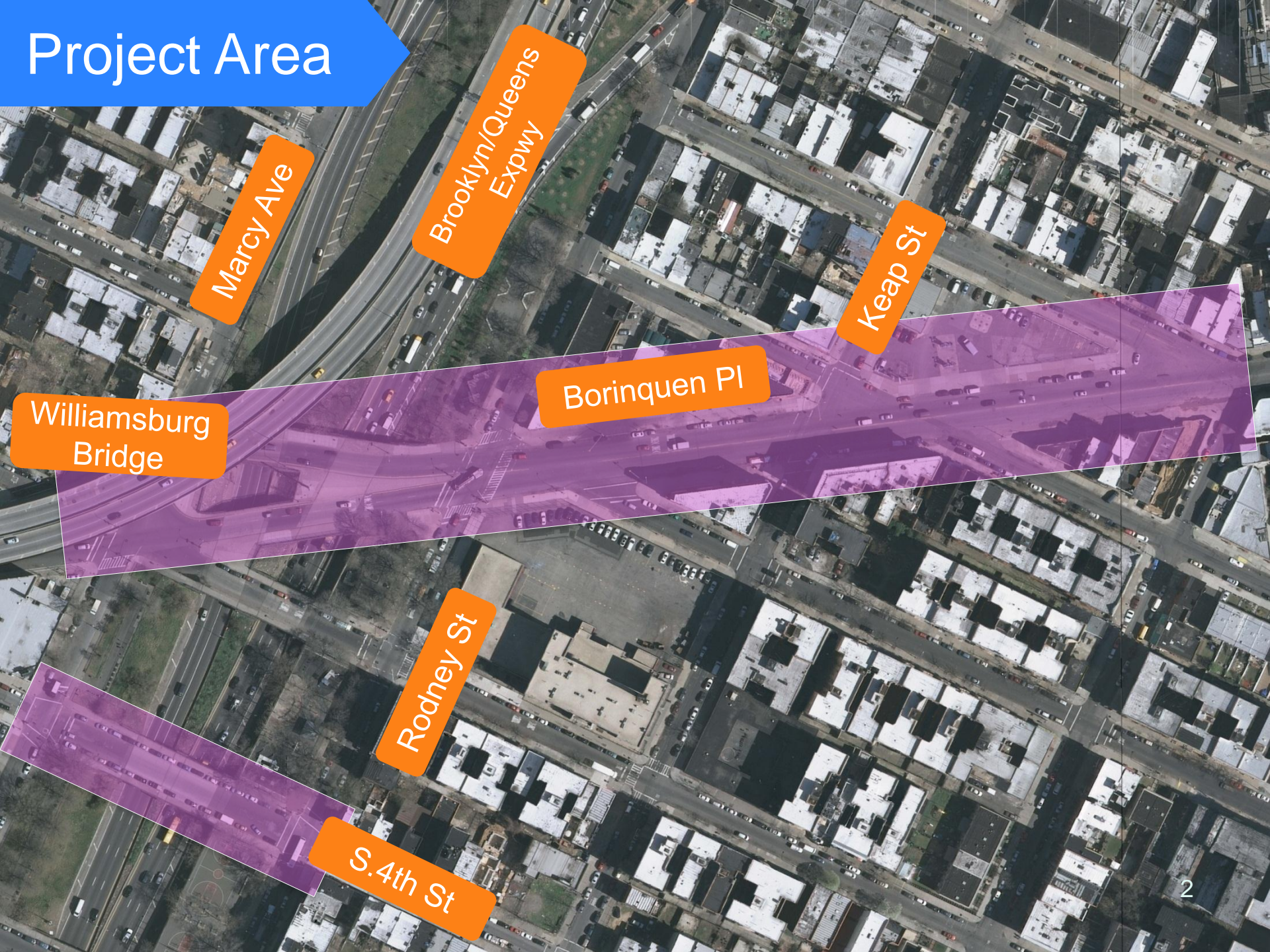


Borinquen Place

2013



Project Area



Marcy Ave

Brooklyn/Queens
Expwy

Keap St

Williamsburg
Bridge

Borinquen Pl

Rodney St

S.4th St

Background

- Council Member Reyna requested a study of streetscape and safety around Borinquen Pl
- Borinquen Place is a high crash corridor
- Two recent pedestrian fatalities near Keap St and Borinquen Pl
- Bicyclist recently fatally struck on Borinquen Pl



- Several Parks/Playgrounds along BQE – Rodney St/Marcy Ave
- P.S. 319 and P.S. 19 adjacent to Borinquen Pl
- Grand street BID pedestrian safety project ends at Union Avenue
- Neighborhood transitioning from industrial/ to residential (i.e. Triangle Court Building)

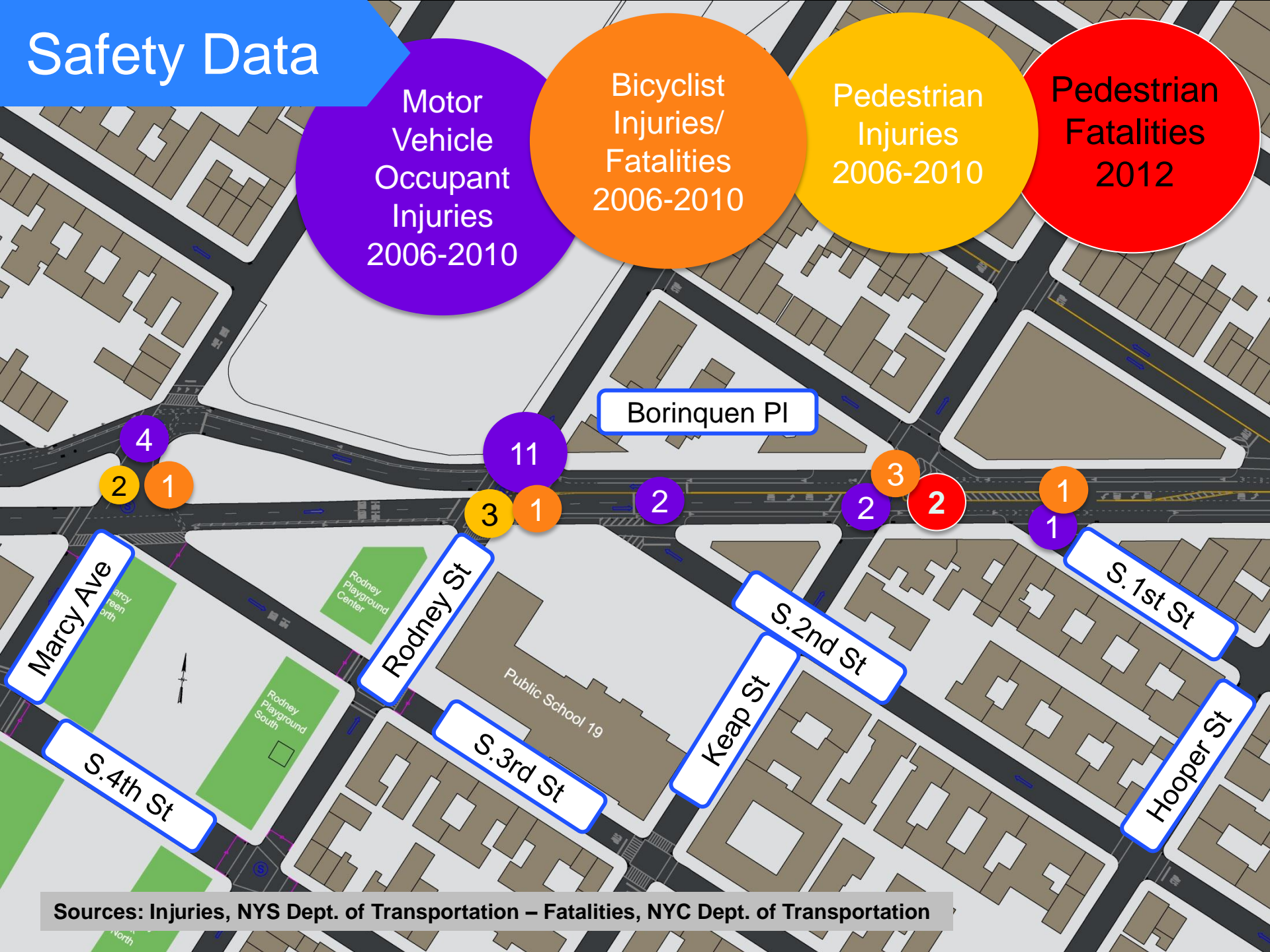
Safety Data

Motor
Vehicle
Occupant
Injuries
2006-2010

Bicyclist
Injuries/
Fatalities
2006-2010

Pedestrian
Injuries
2006-2010

Pedestrian
Fatalities
2012



Sources: Injuries, NYS Dept. of Transportation – Fatalities, NYC Dept. of Transportation

Rapid Response Toolkit

- Pavement markings
- Signal modifications
- New signage
- Painted and/or textured surfaces
- Flexible delineators



Rapid Response Toolkit

Painted Sidewalk Extension Examples



Schermerhorn St., Brooklyn



Union Avenue & N.12th Street

Rapid Response Toolkit

Concrete Median Examples

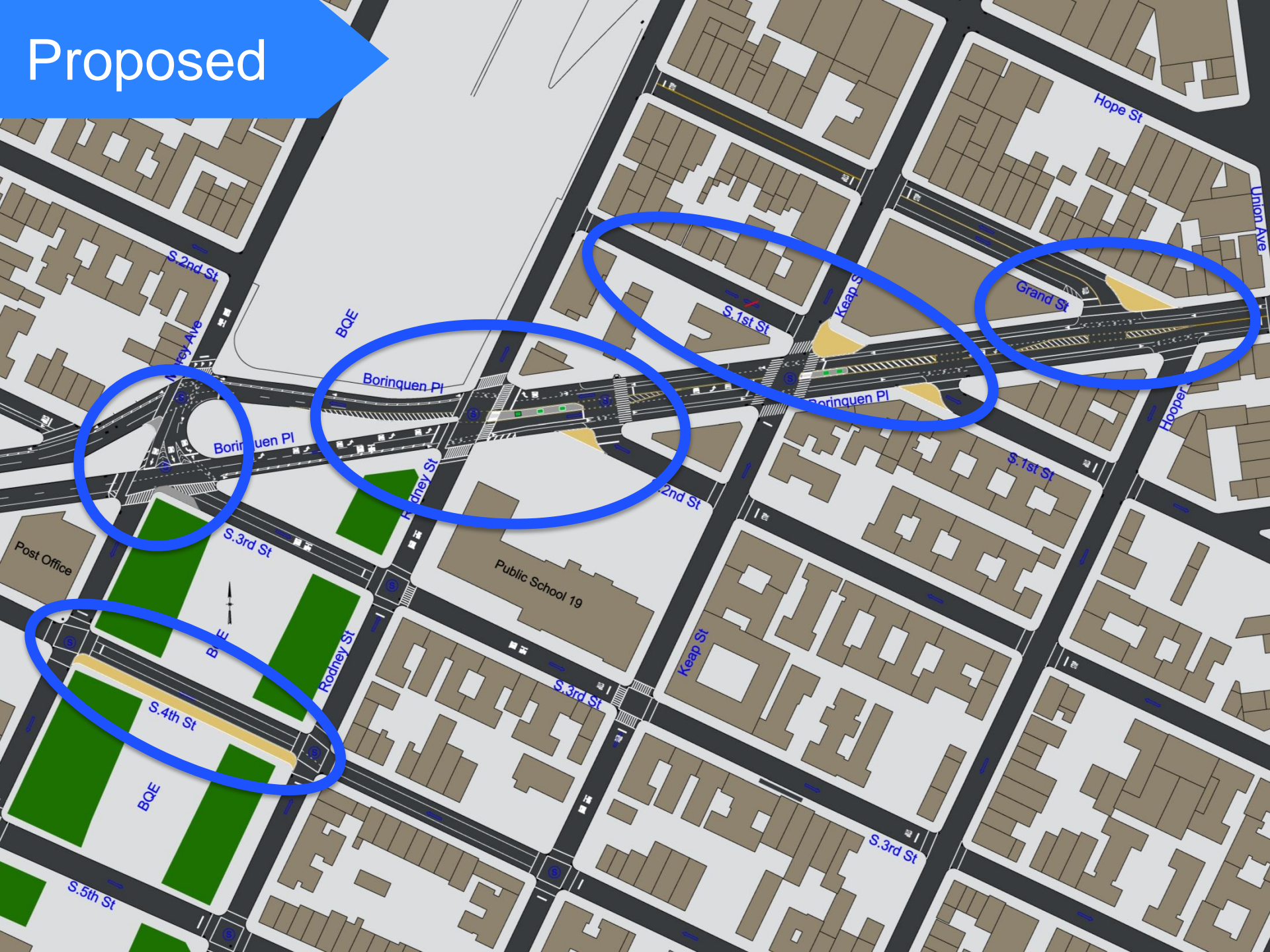


Southern Blvd,
Bronx



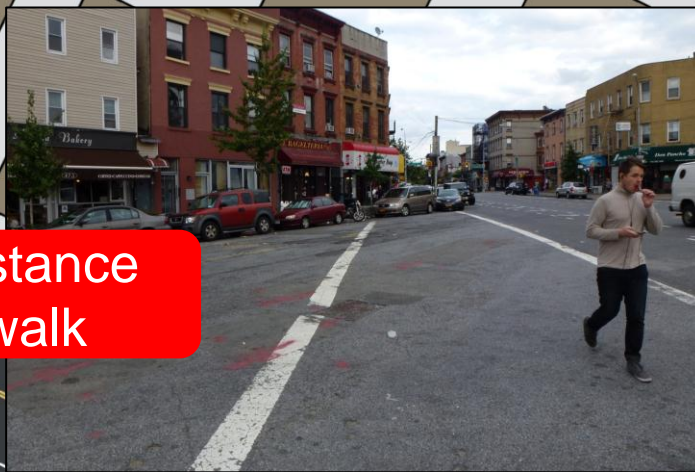
Hylan Blvd, Staten Island

Proposed



Proposed

Long crossing distance
130 foot crosswalk



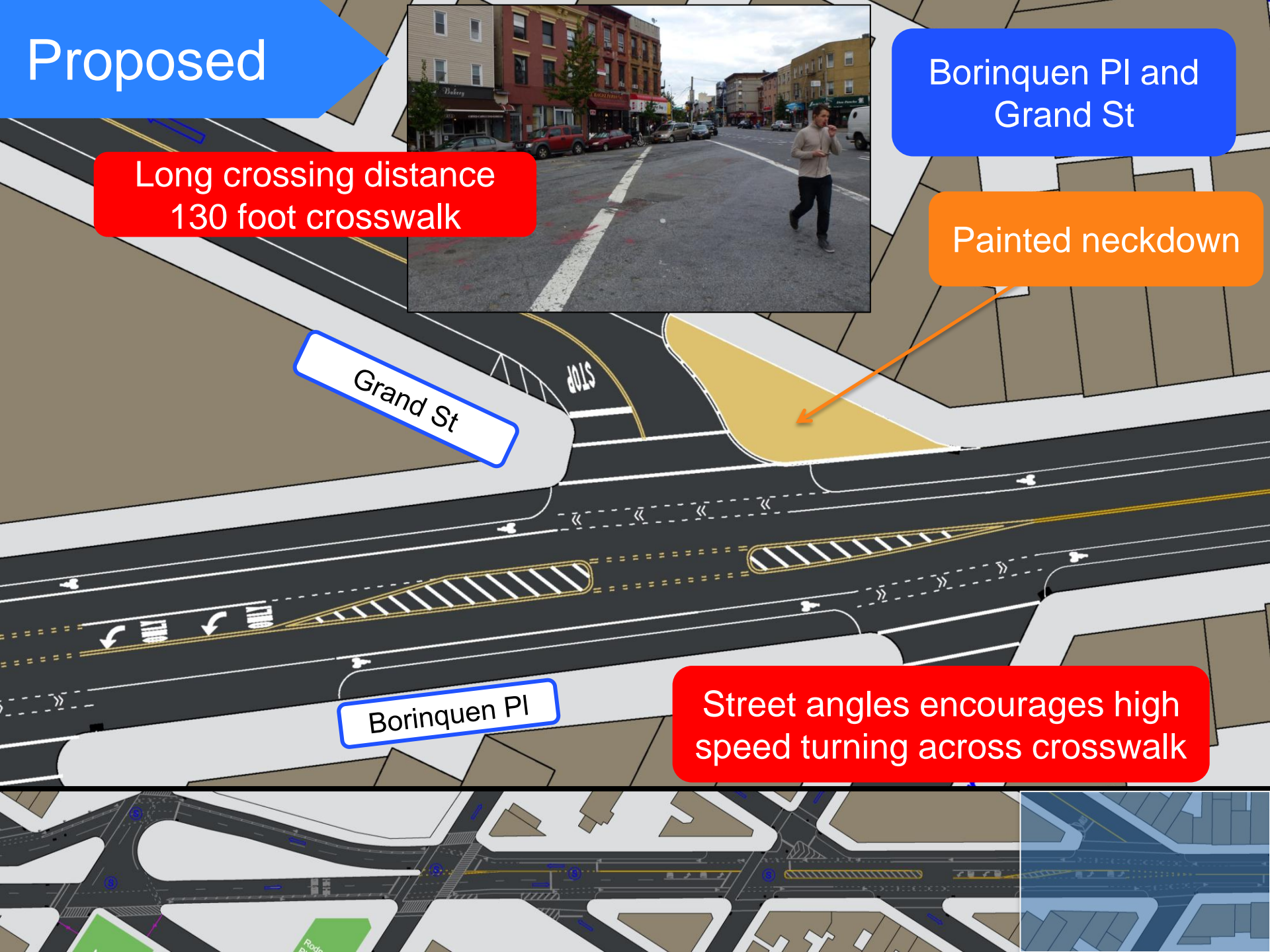
Borinquen Pl and
Grand St

Painted neckdown

Grand St

Borinquen Pl

Street angles encourages high
speed turning across crosswalk



Proposed

Two pedestrian fatalities in 2012

Borinquen Pl and
Keap St

Pedestrian
demand for
crossing

Painted neckdown/
closed slip lane

New crosswalk
and safety island

Painted neckdown



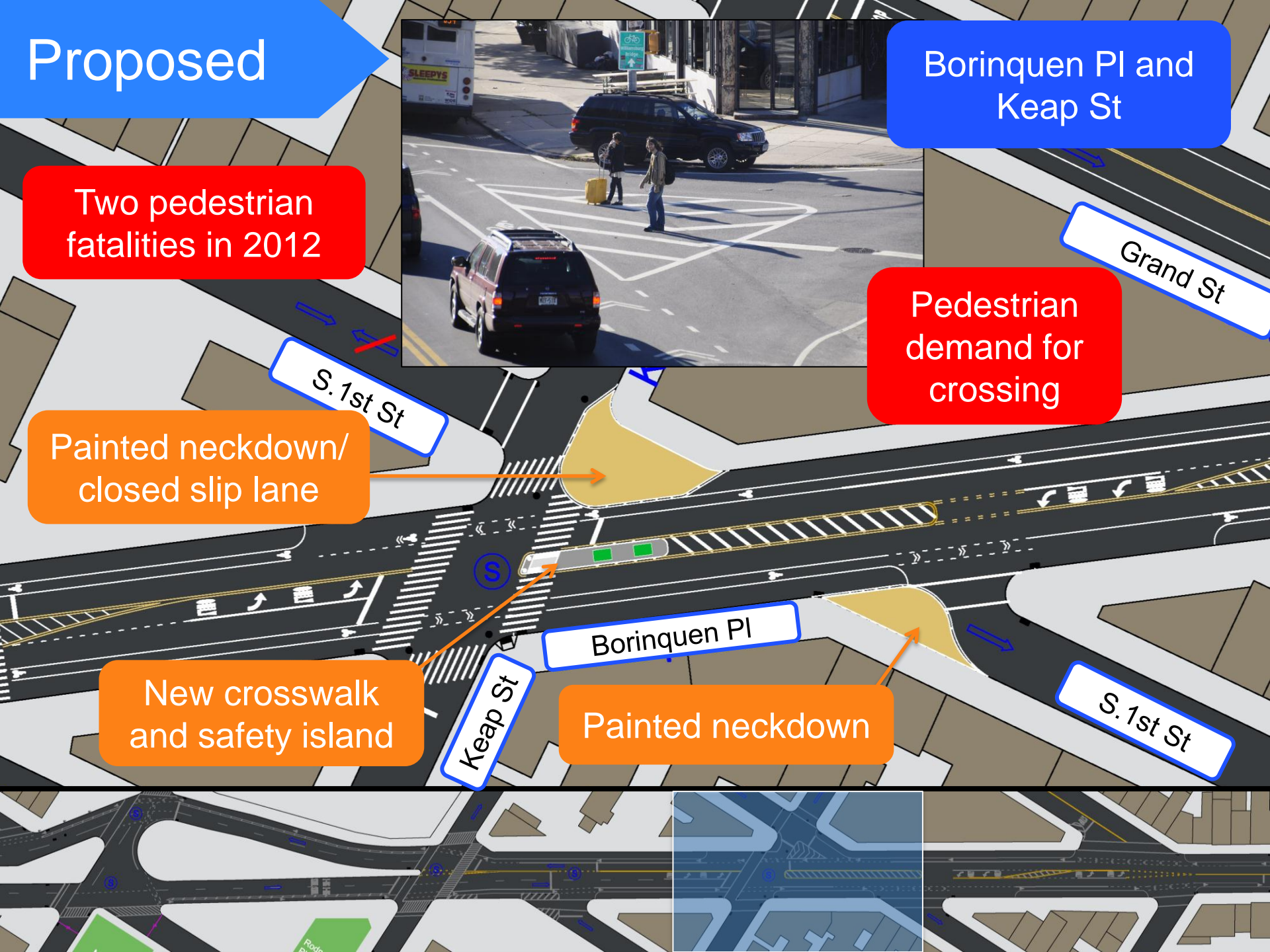
Grand St

S. 1st St

Borinquen Pl

Keap St

S. 1st St



Proposed

S.1st St reversed for
one block between
Rodney and Keap
Streets

Borinquen Pl and
Keap St

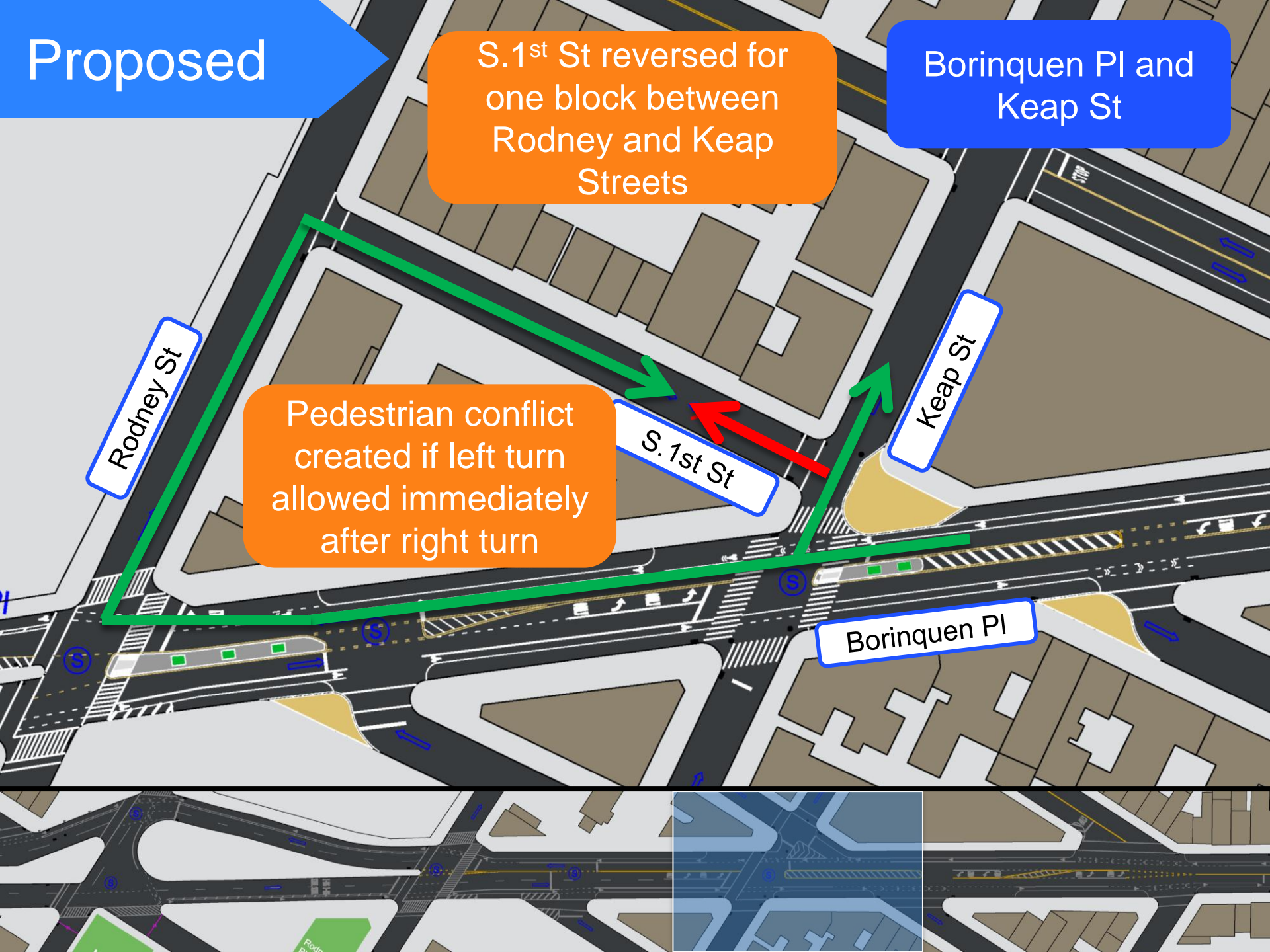
Rodney St

Keap St

Pedestrian conflict
created if left turn
allowed immediately
after right turn

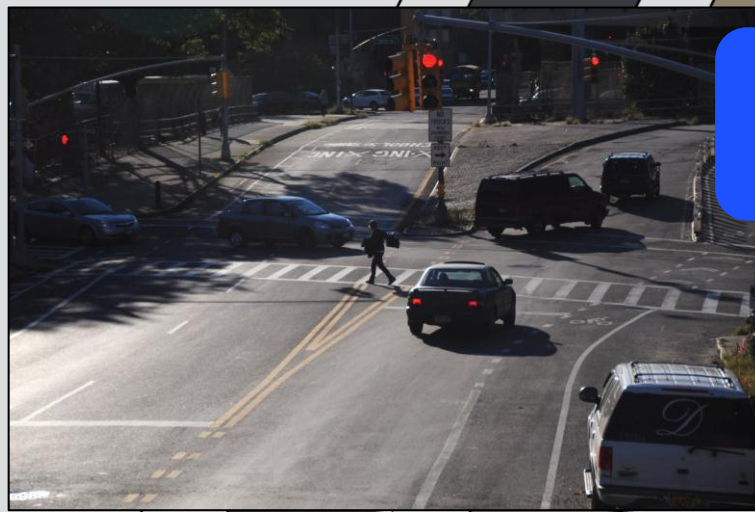
S.1st St

Borinquen Pl



Proposed

Pedestrians
travelling to/from
schools and parks



Borinquen PI and
Rodney St / S.2nd St

New right
turn lane

Safety median

Borinquen PI

New markings

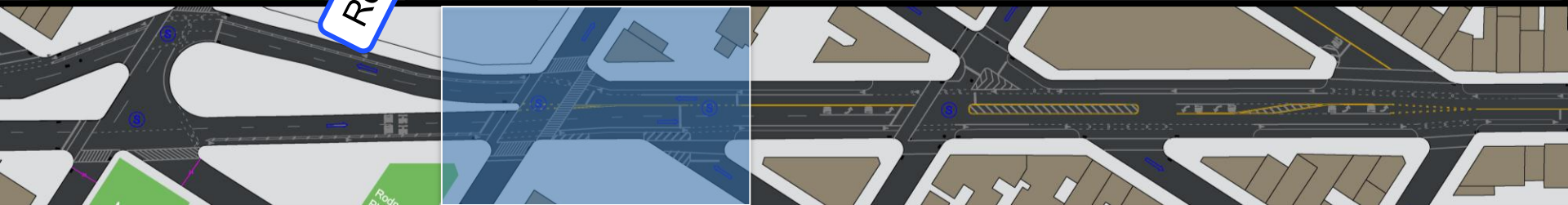
New left
turn lane

Rodney St

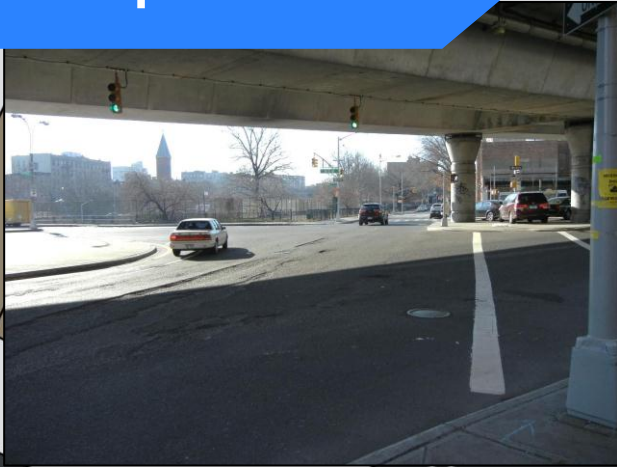
Painted neckdown

New crosswalk

S.2nd St



Proposed



Marcy Ave

Borinquen Pl and
Marcy Avenue

Unpredictable vehicle
movements through
crosswalk

New lane
markings

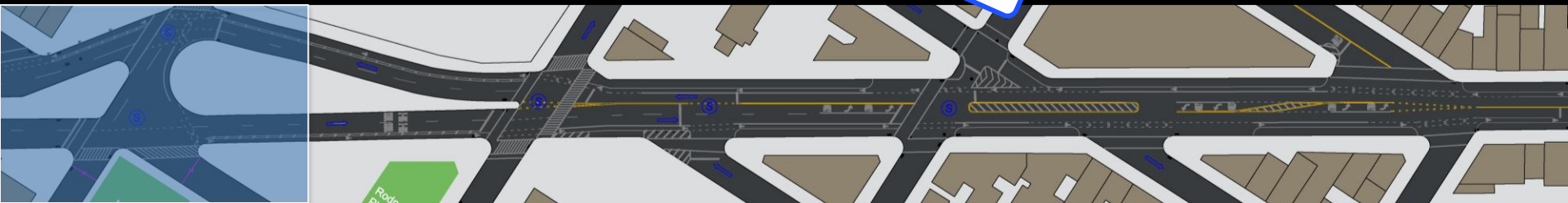
Borinquen Pl

Concrete
extension

Unmarked wide
intersection

Concrete
neckdown

S. 3rd St



Proposed

S.4th Street
Between Marcy and
Rodney

Disencourage speeding

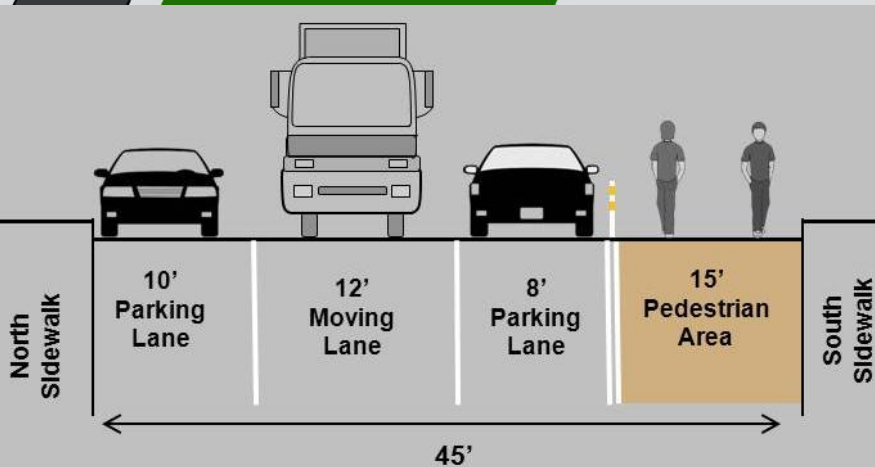
Wide street

Marcy Ave

S.4th St

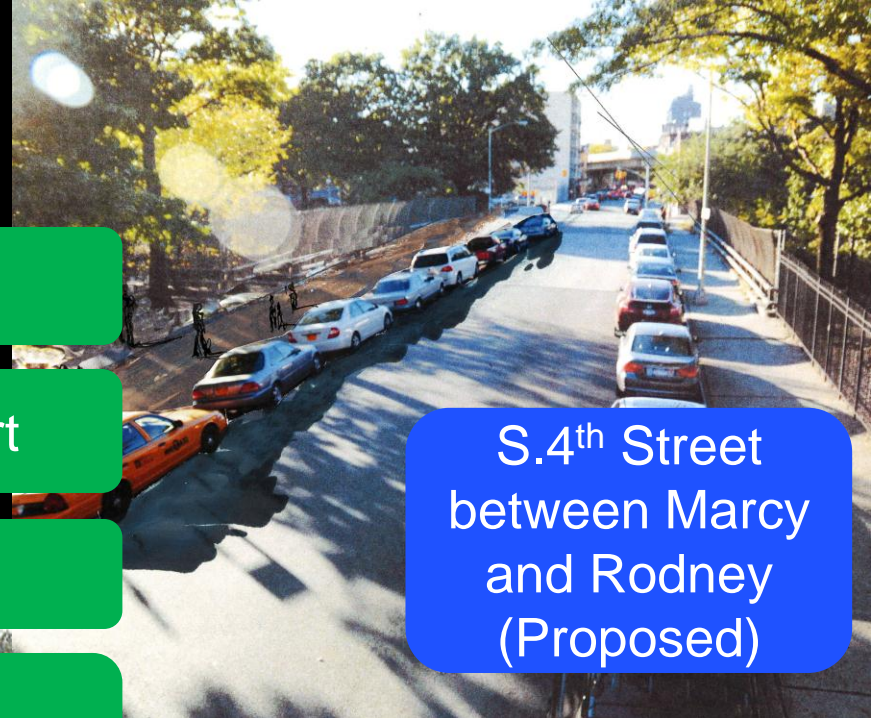
Rodney St

15' painted sidewalk
extension



Benefits

- Improved traffic flow and circulation
- Increased pedestrian safety and comfort
- Enhanced walking environment
- Landscaping and new neighborhood amenities



Summary



Borinquen Pl and
Grand St
(Proposed)

- Construct two landscaped pedestrian safety islands on Borinquen Pl at Rodney St and at Keap St
- Build neckdowns on Borinquen Pl at S.3rd St and at Marcy Ave
- Install new painted neckdowns on Borinquen Pl at Grand St, S. 1st St, and S. 2nd St
- Install painted sidewalk extension on S.4th St between Rodney St and Marcy Ave
- Add new crosswalks across Borinquen Pl at S. 2nd St south leg and at Keap St south leg
- Close low volume slip lane at Keap St with painted neckdown
- Reverse direction of S. 1st Street between Rodney and Keap to improve intersection operations at Borinquen and Keap

www.nyc.gov/dot

Thank
You

Additional Studies

S.3rd Street between Rodney and Keap streets
speed hump study initiated December

S.2nd and Keap streets intersection stop sign study
initiated December

S.2nd street between Rodney and Keap streets
speed hump study initiated January

Parking



- 1 Parking Space

- 1 Parking Space

- 1 Parking Space

- 1 Parking Space

- 2 Parking Space

+ 2 Parking Space

+ 2 Parking Space

+ 3 Parking Space

- 1 Parking Space

No Parking Changes

Zero Parking Loss