

# Grand Concourse at Mosholu Pkwy



2012

Commissioner Janette Sadik-Khan, New York City Department of Transportation  
Presented by the Pedestrian Projects Group, May 17, 2012 to Bronx Community Board 7



# Project Extent

Multiple elementary + secondary schools including High Schools of Music + Science

Lehman College

Mosholu Pkwy # 4 subway

Montefiore Medical Center

Norwood

East Coast Greenway

Northern gateway to the Grand Concourse

Bedford Park

Bedford Park B, D subway



# Grand Concourse Changes Character

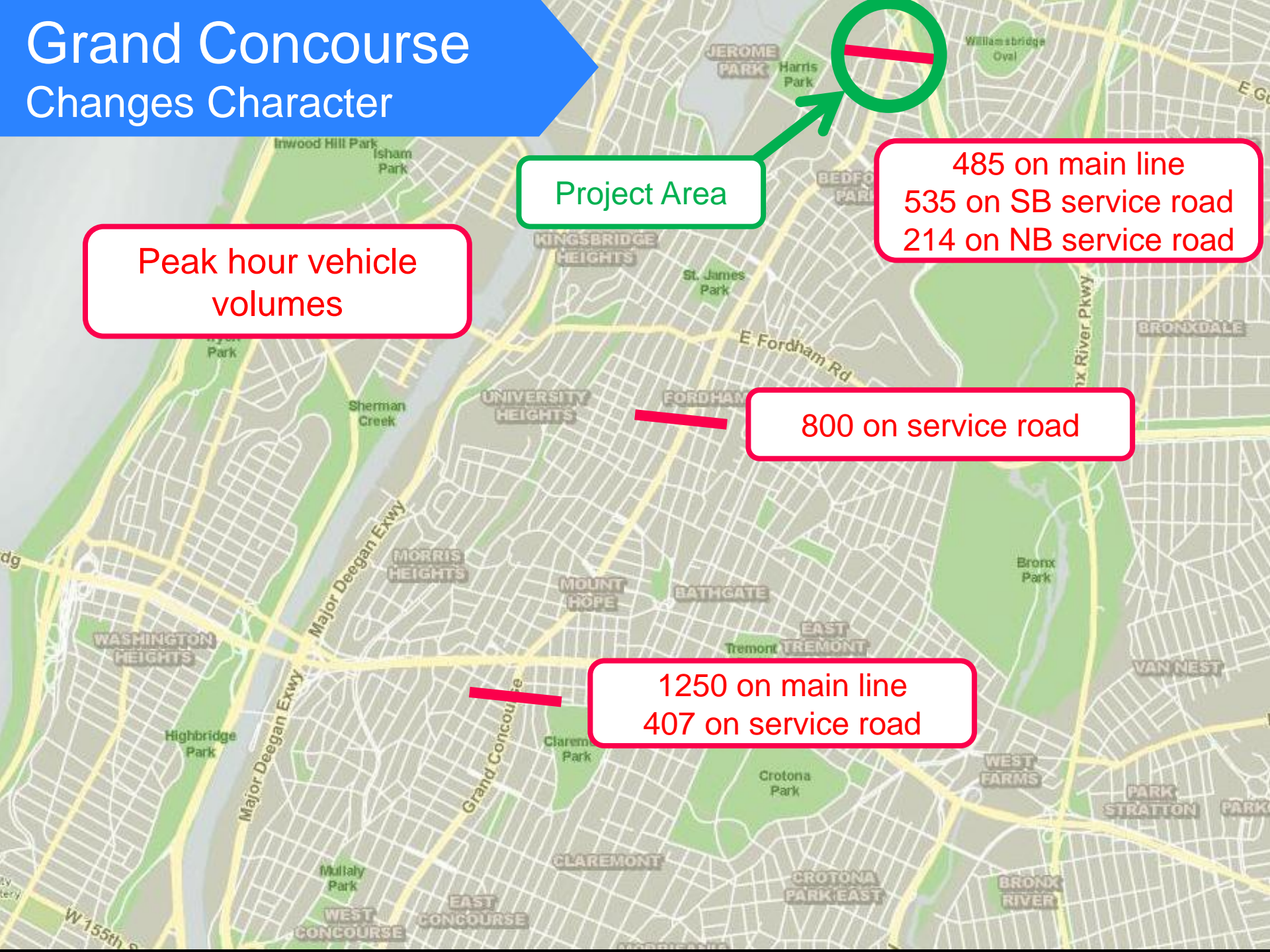
Project Area

485 on main line  
535 on SB service road  
214 on NB service road

Peak hour vehicle  
volumes

800 on service road

1250 on main line  
407 on service road



# Background Issues



## Crash Data 2006-2010

### Entire Project Area

Grand Concourse: E. 206<sup>th</sup> to Mosholu Pkwy  
Van Cortlandt: Jerome to E. Mosholu Pkwy S.  
E. Mosholu Pkwy S.: Jerome to Van Cortlandt

Risse Street: Jerome to Grand Concourse

- Pedestrian injuries: 15
- Bicyclist injuries: 4
- Motor vehicle occupant injuries: 113

- Long crosswalks
- Gaps in pedestrian network
- Wide roads induce speeding and unpredictable driver behavior
- Irregular bus movements

# Grand Concourse at Van Cortlandt

## Existing Conditions



Risse Street

Van Cortlandt Ave

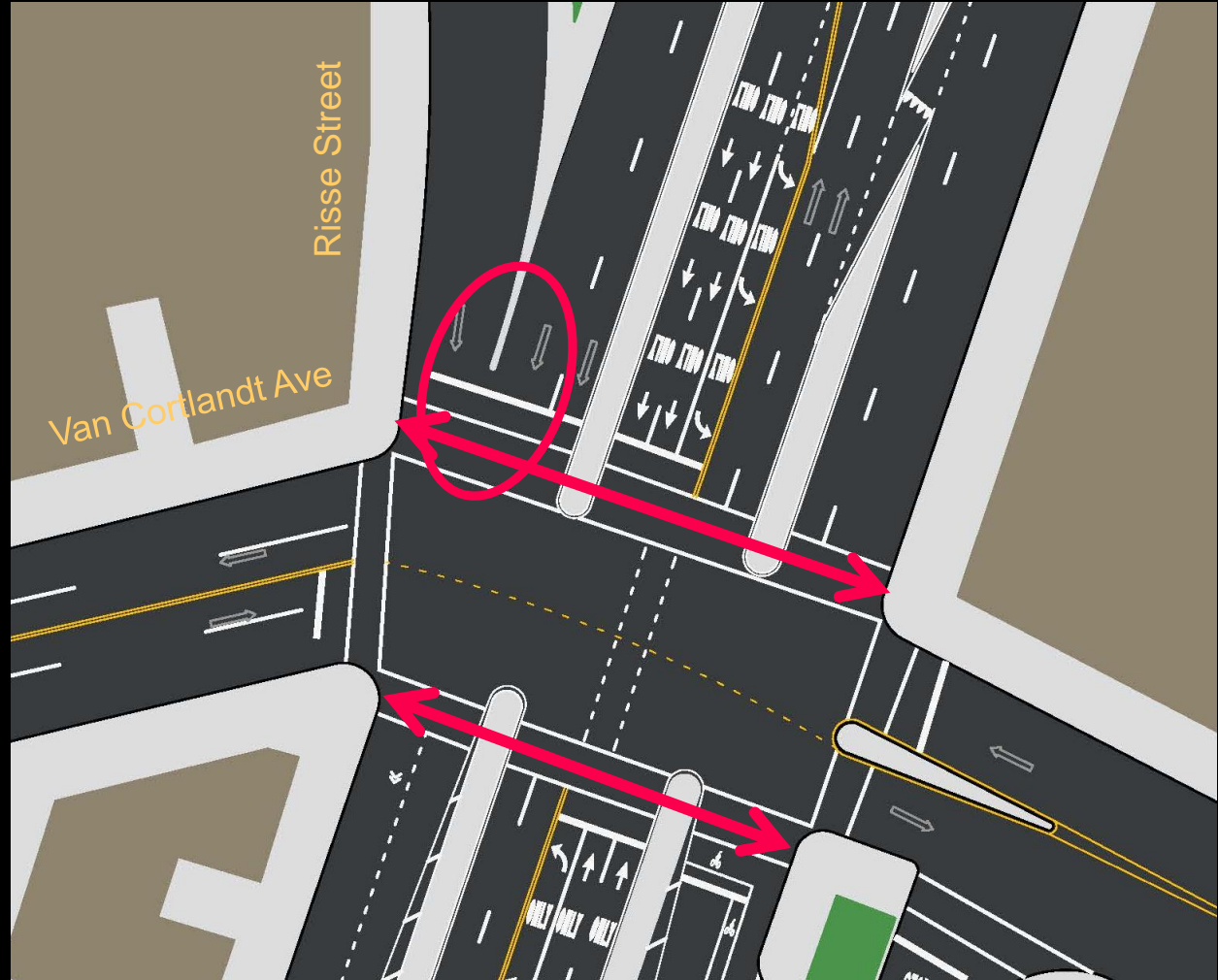
View North

# Grand Concourse at Van Cortlandt

Existing Conditions

Overly long crossings

Pedestrian walk in road from Risse St Park



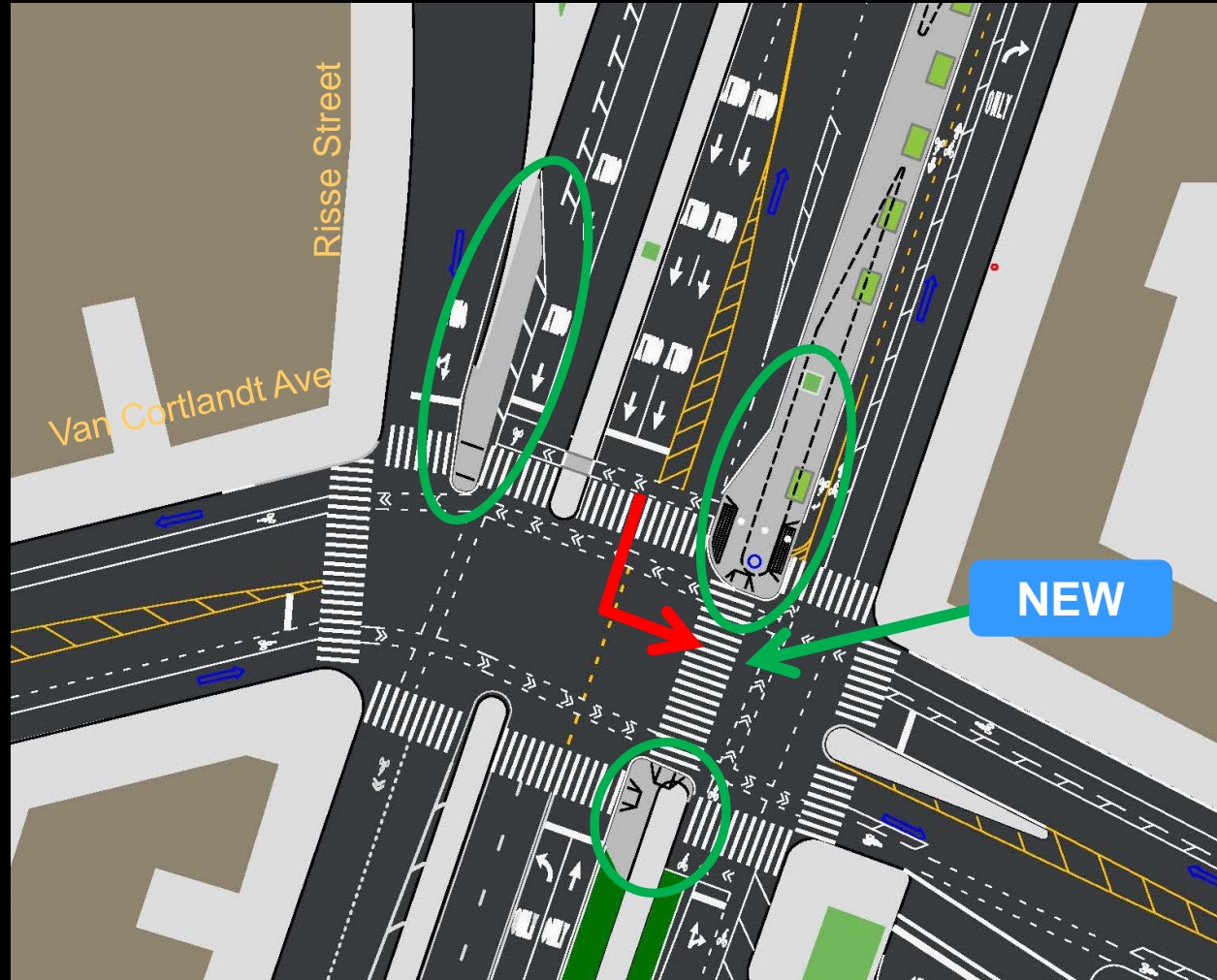
# Grand Concourse at Van Cortlandt

## Proposed Conditions

Extend medians to shorten crossing segments

Connect Risse St Park to crosswalk

Add new conflict-free crosswalk by banning SB left

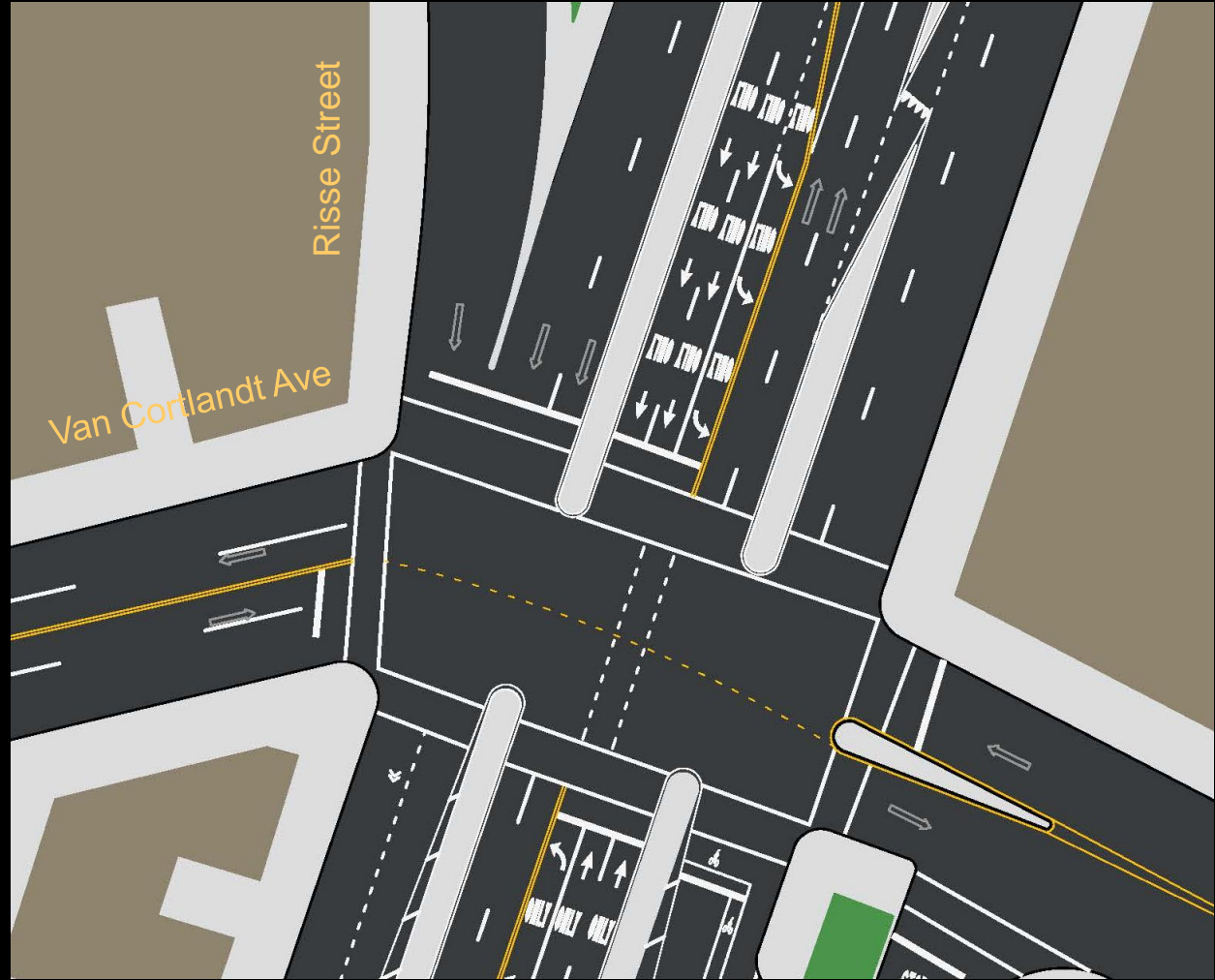


# Grand Concourse at Van Cortlandt

Existing Conditions

Wide road induces speeding

Too many travel lanes for low vehicle volumes





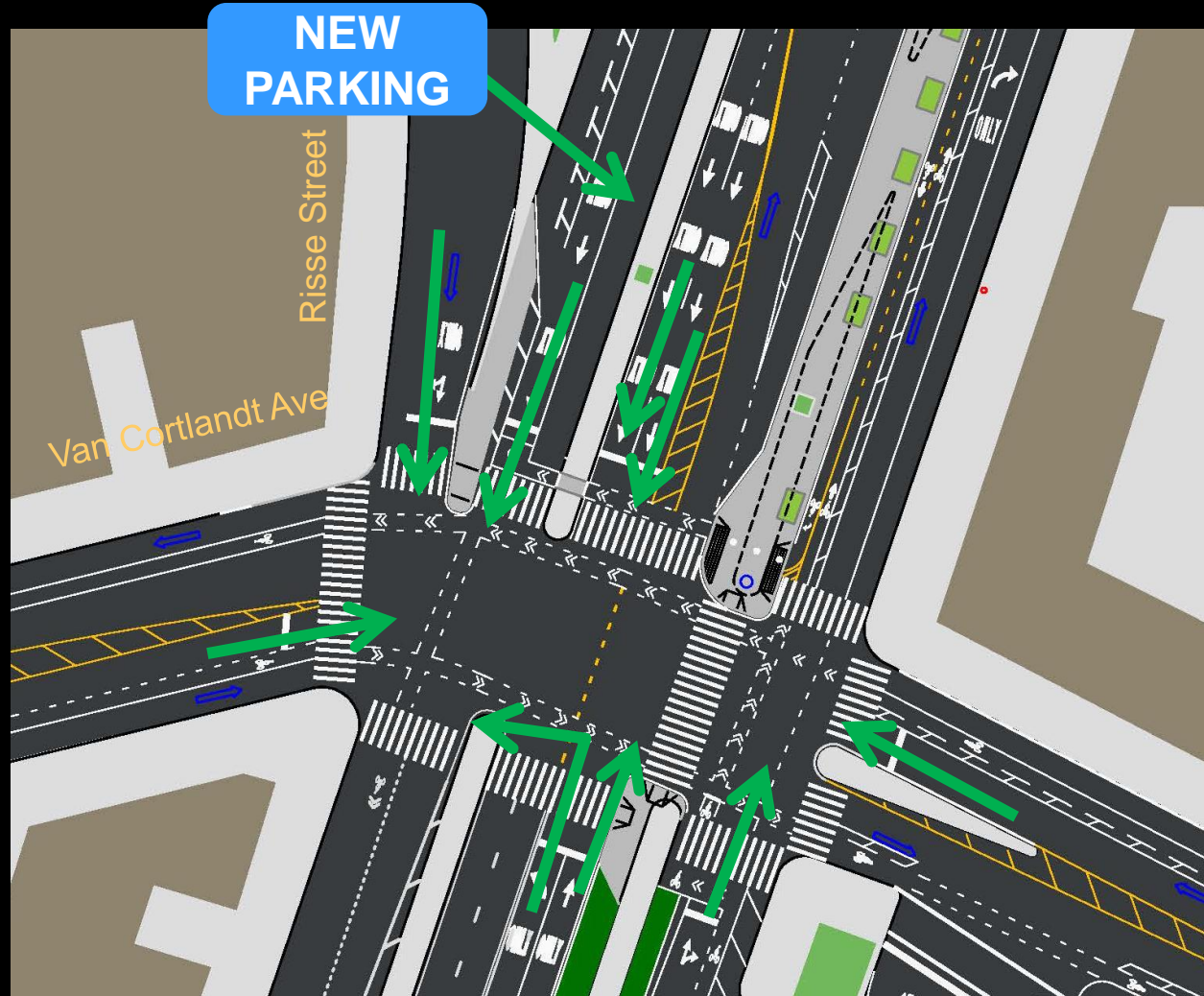
# Grand Concourse at Van Cortlandt

Proposed Conditions

Match travel lanes to volume

Reduce number of lanes on both main line and service road

Add parking on SB service road median

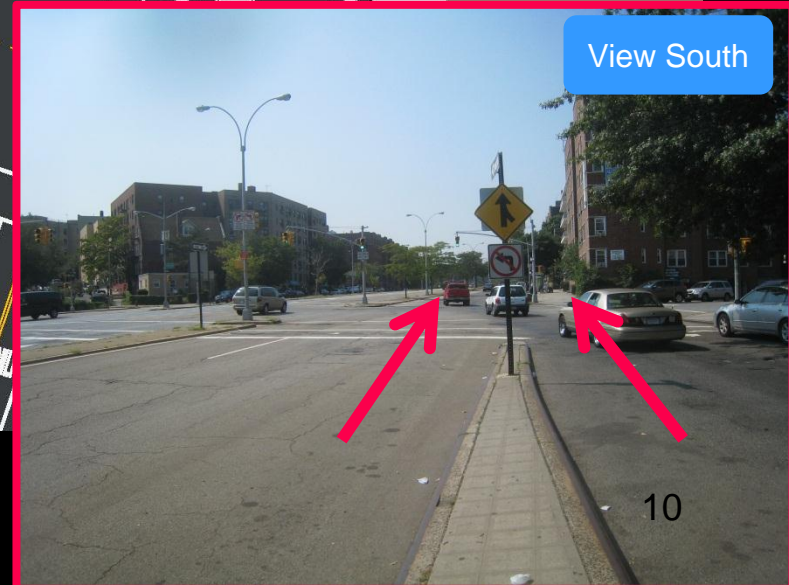
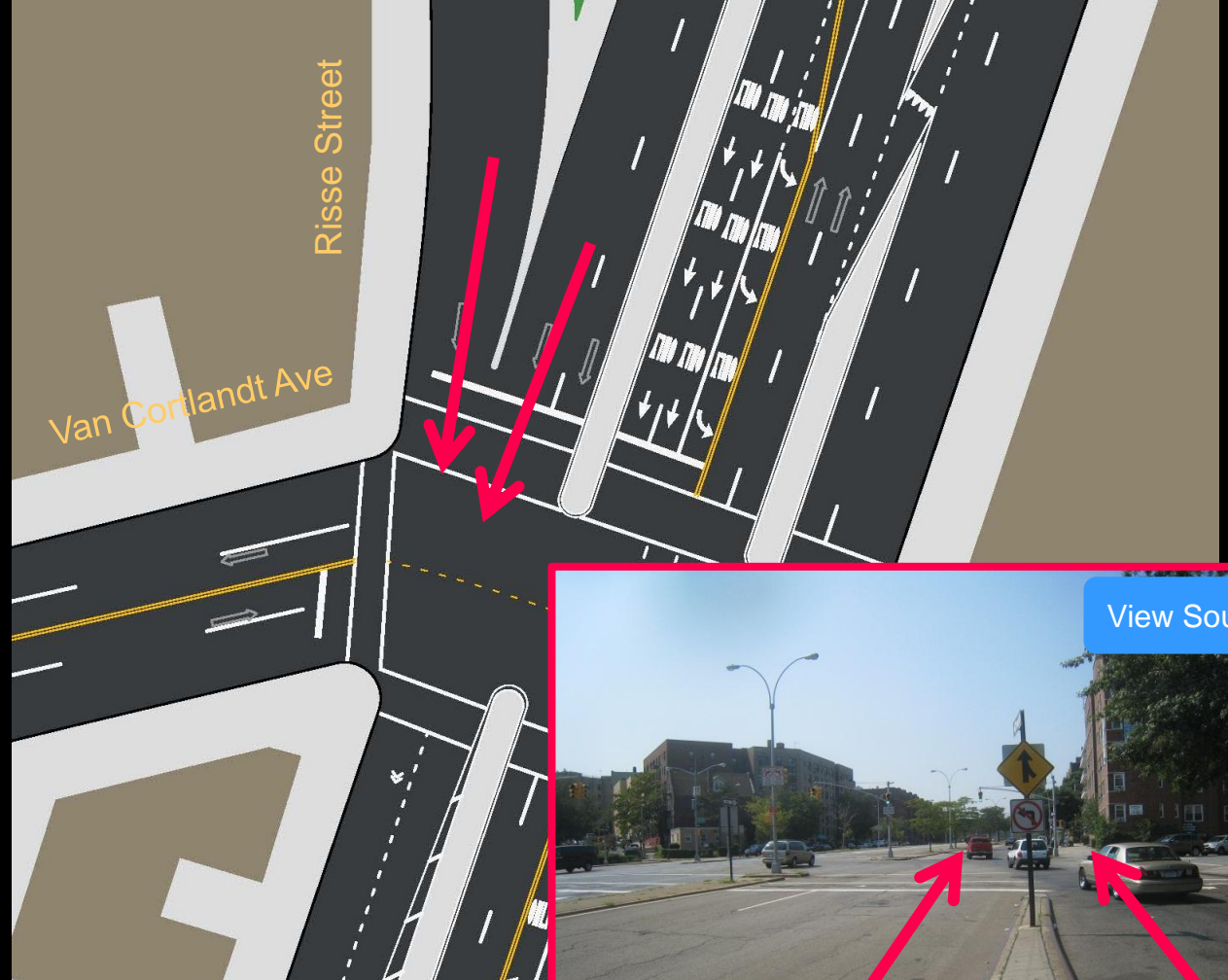


# Grand Concourse at Van Cortlandt

Existing Conditions

Confusing merge

SB Risse and  
Service Road  
merge at same  
time



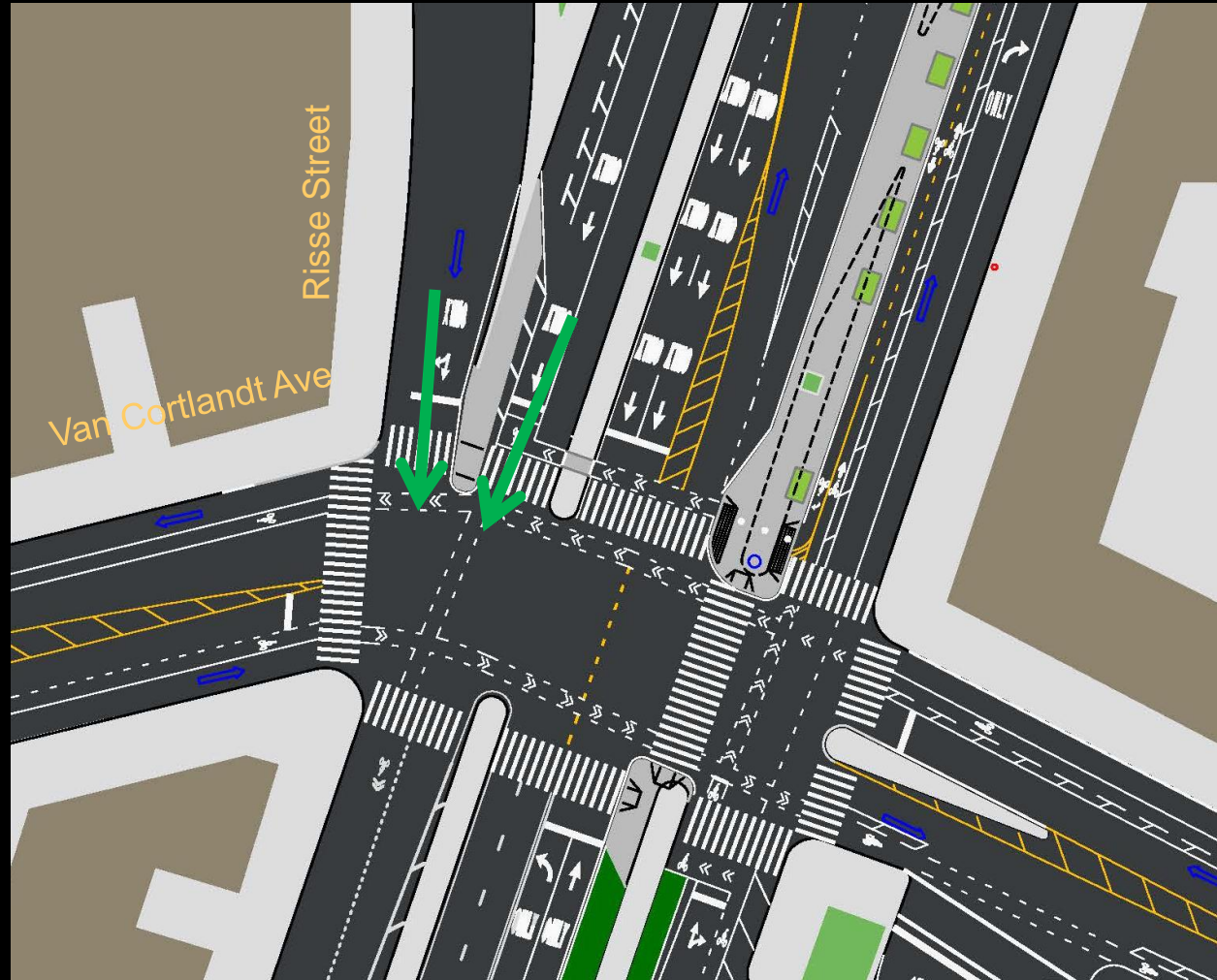
# Grand Concourse at Van Cortlandt

## Proposed Conditions

Redesign merge

New island and markings clarify merge

Investigating signal separation



# Grand Concourse at Van Cortlandt

## Proposed Conditions



# North of Van Cortlandt

## Existing Conditions



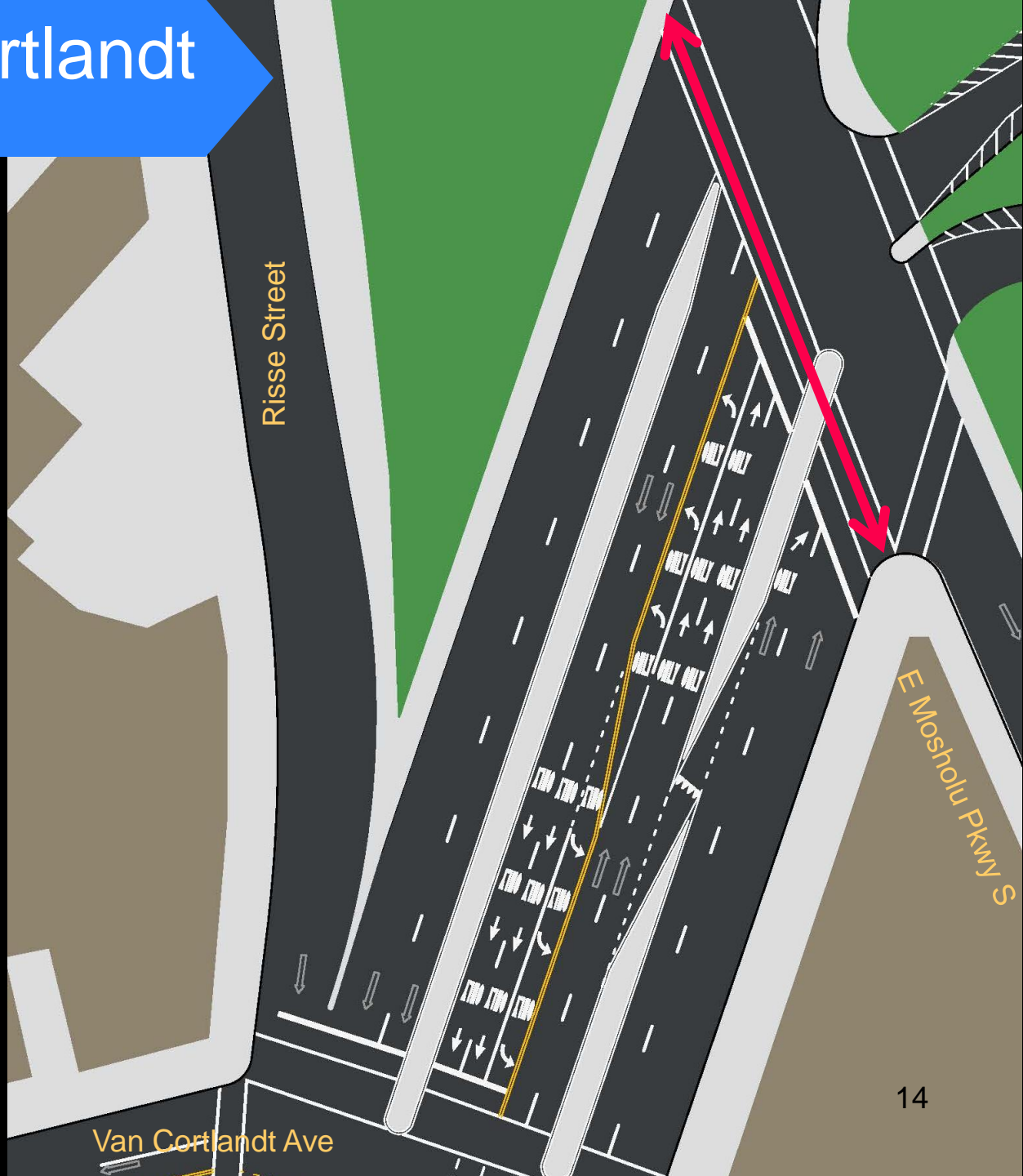
E Mosholu Pkwy S

Van Cortlandt Ave

# North of Van Cortlandt

Existing Conditions

Long Crosswalk

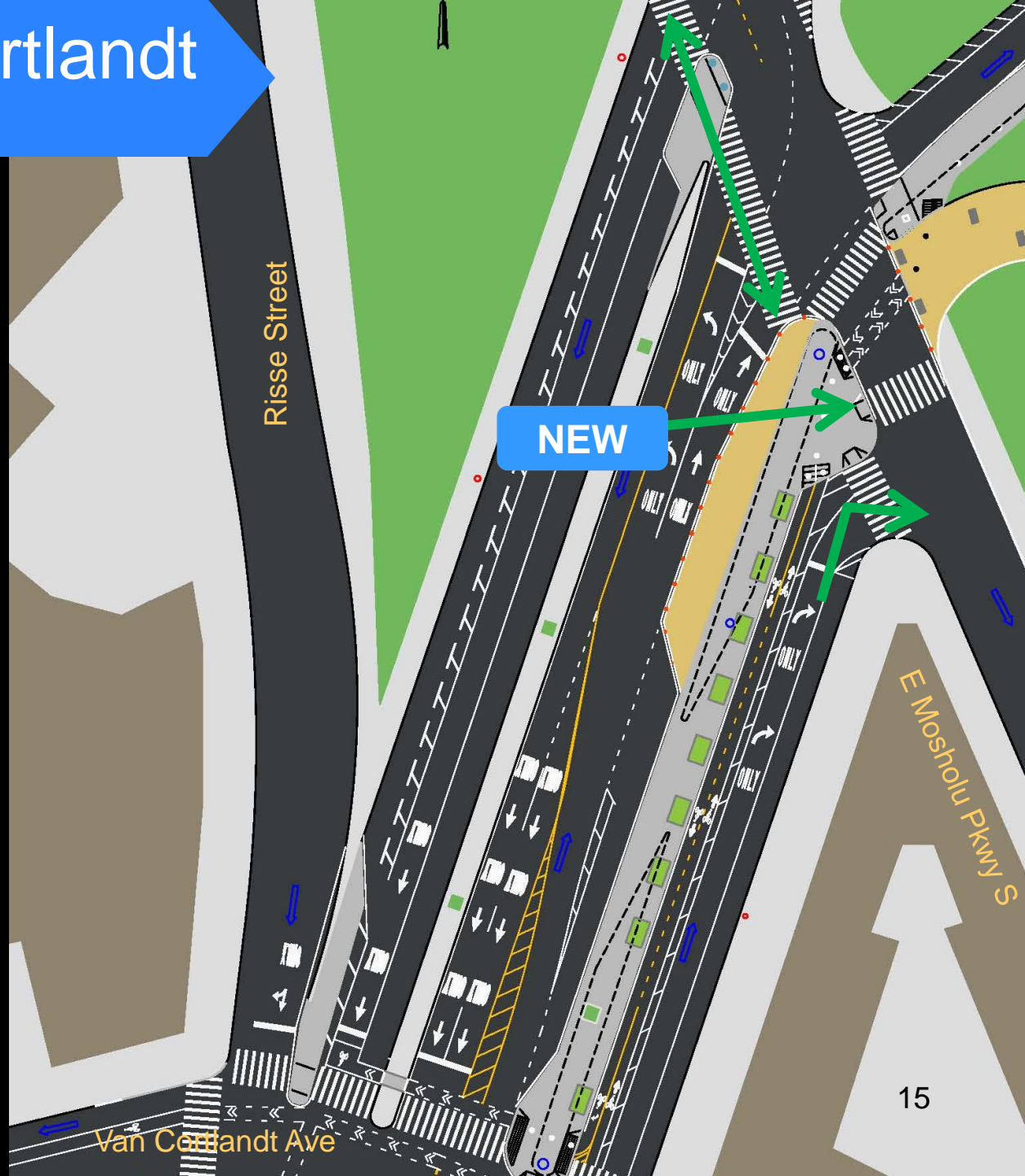


# North of Van Cortlandt

## Proposed Conditions

Extend medians to shorten crossing segments

Add new conflict-free crosswalk by creating local only service road

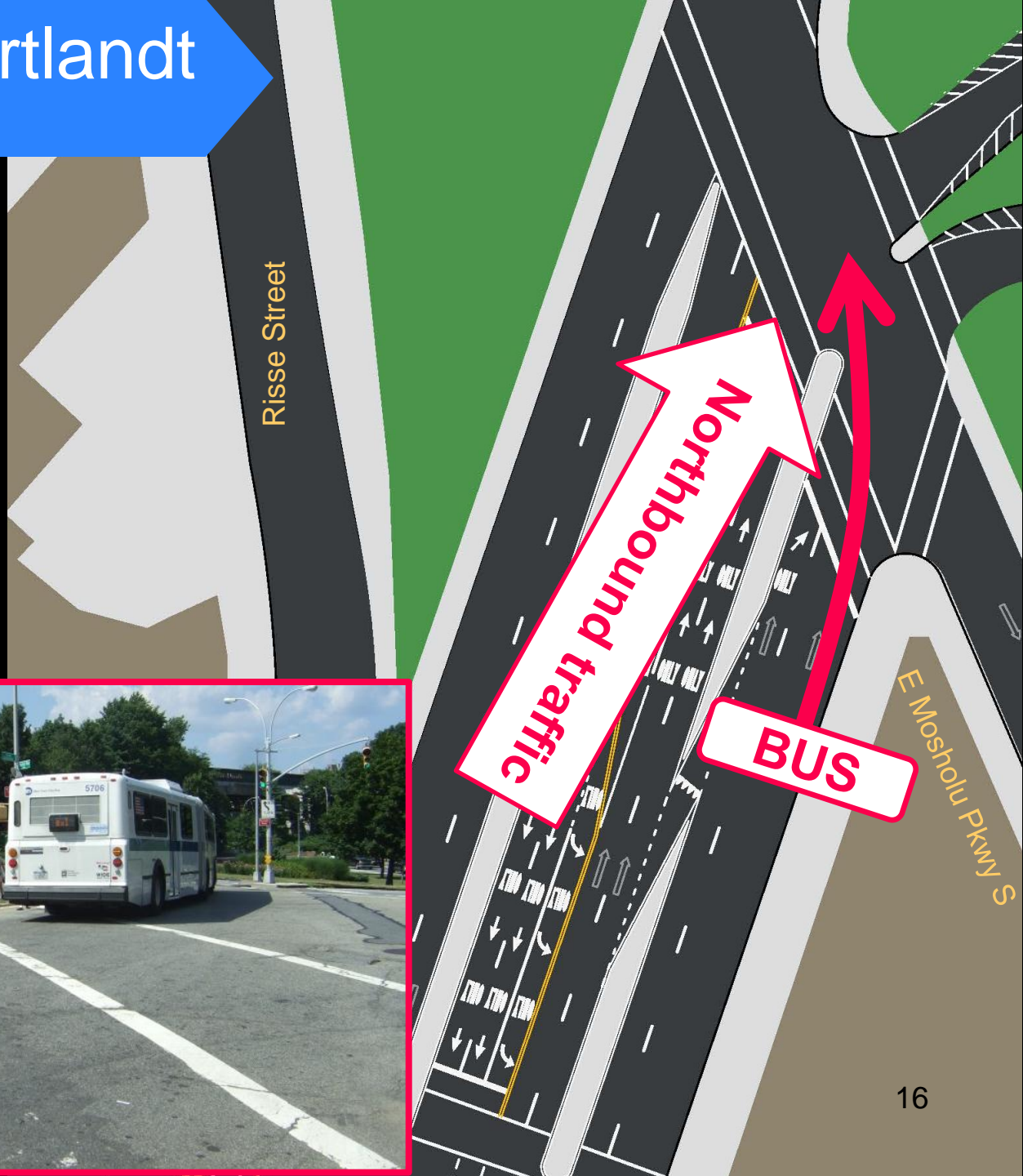


# North of Van Cortlandt

## Existing Conditions

Irregular bus movement

Buses forced to turn across 5 lanes of traffic





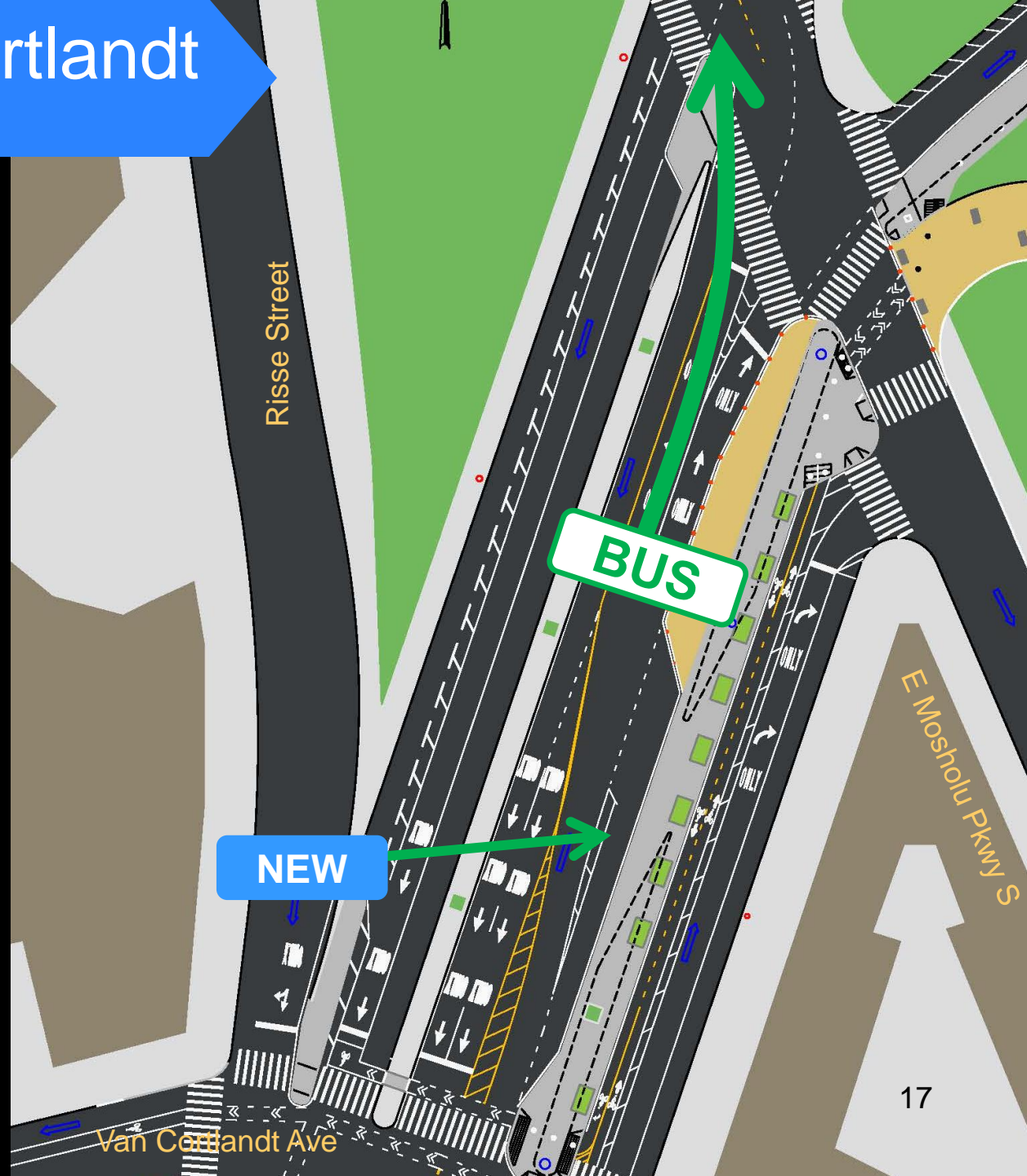
# North of Van Cortlandt

## Proposed Conditions

Create new bus stop plaza on main line

Bus switches to main line at E 206<sup>th</sup> Street Slip

Buses turn with regular traffic



# North of Van Cortlandt

## Proposed Conditions



# Grand Concourse at Mosholu

## Existing Conditions



E Mosholu Pkwy S

Mosholu Pkwy

View SEast

Mosholu Parkway

# Grand Concourse at Mosholu

## Existing Conditions

Gaps in ped network

Missing sidewalk

Peds walk in roadway



# Grand Concourse at Mosholu

## Proposed Conditions

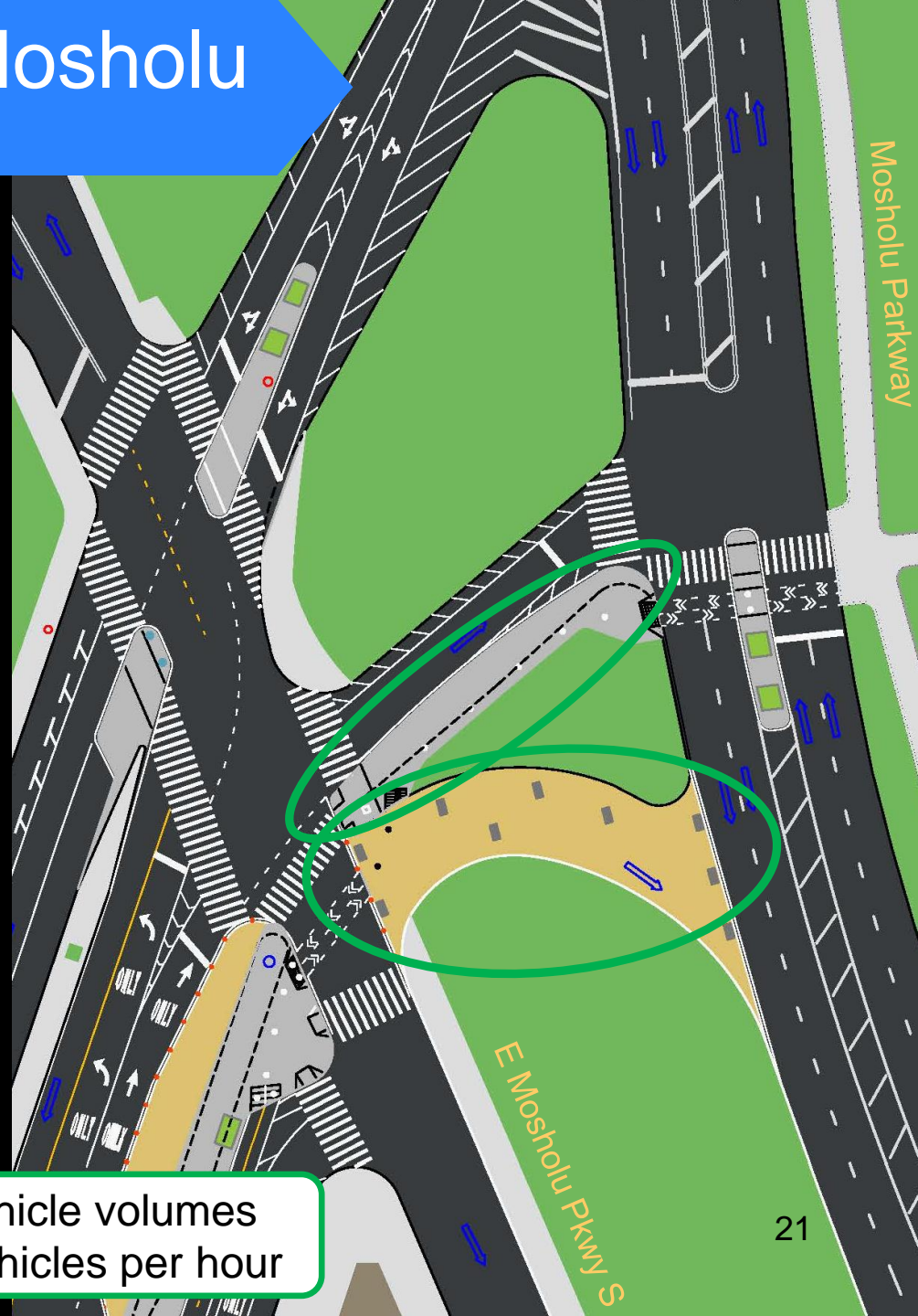
Build new sidewalk connection

Close slip road to connect park with colored roadbed treatment

Add granite blocks for seating

All traffic uses main line to get to Mosholu Parkway

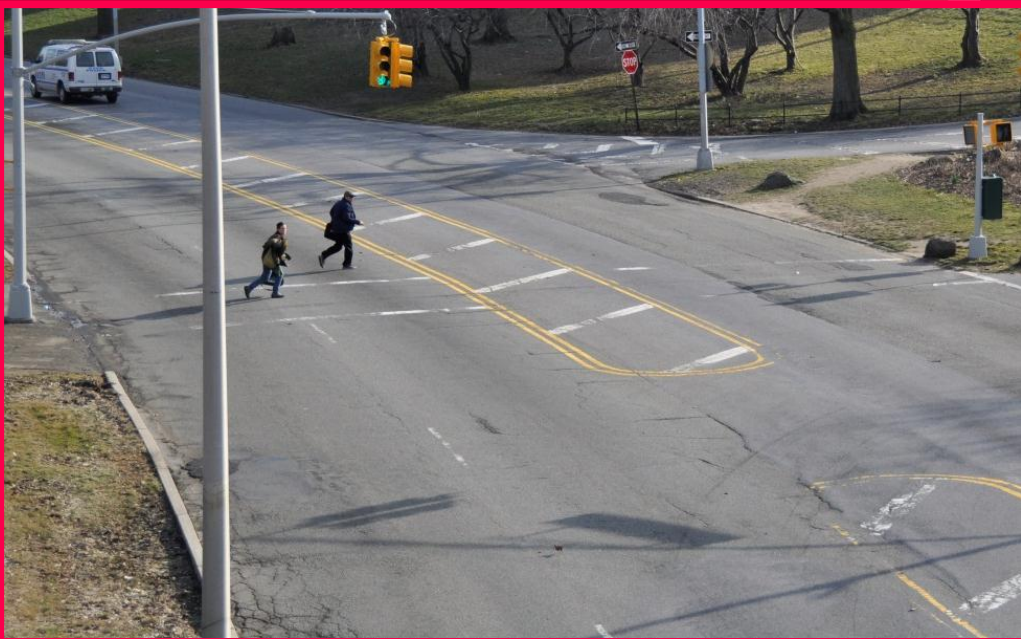
Low slip road vehicle volumes  
PM Peak of 87 vehicles per hour



# Grand Concourse at Mosholu

Existing Conditions

Long crosswalks





# Grand Concourse at Mosholu

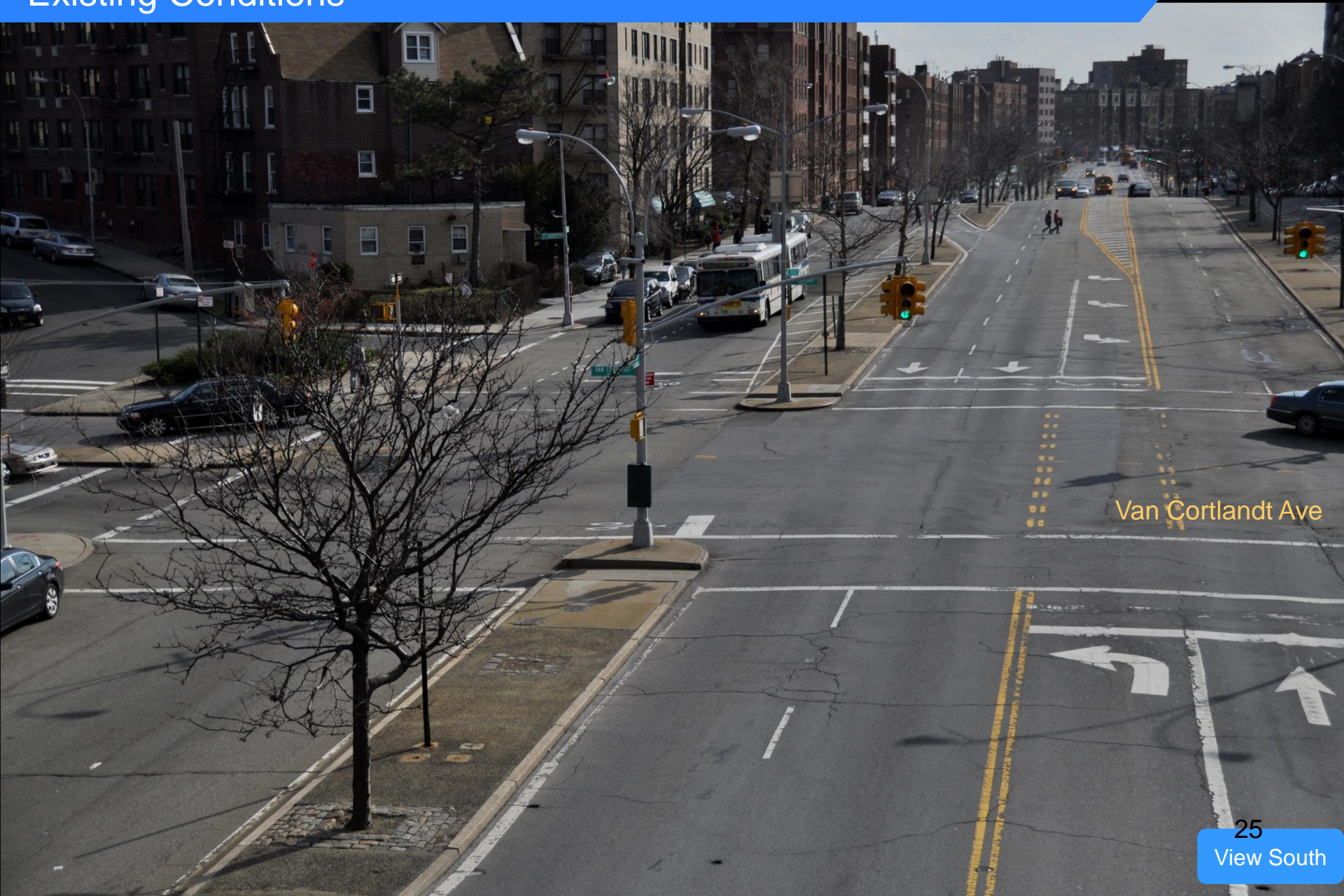
## Proposed Conditions





# South of Van Cortlandt

## Existing Conditions



Van Cortlandt Ave

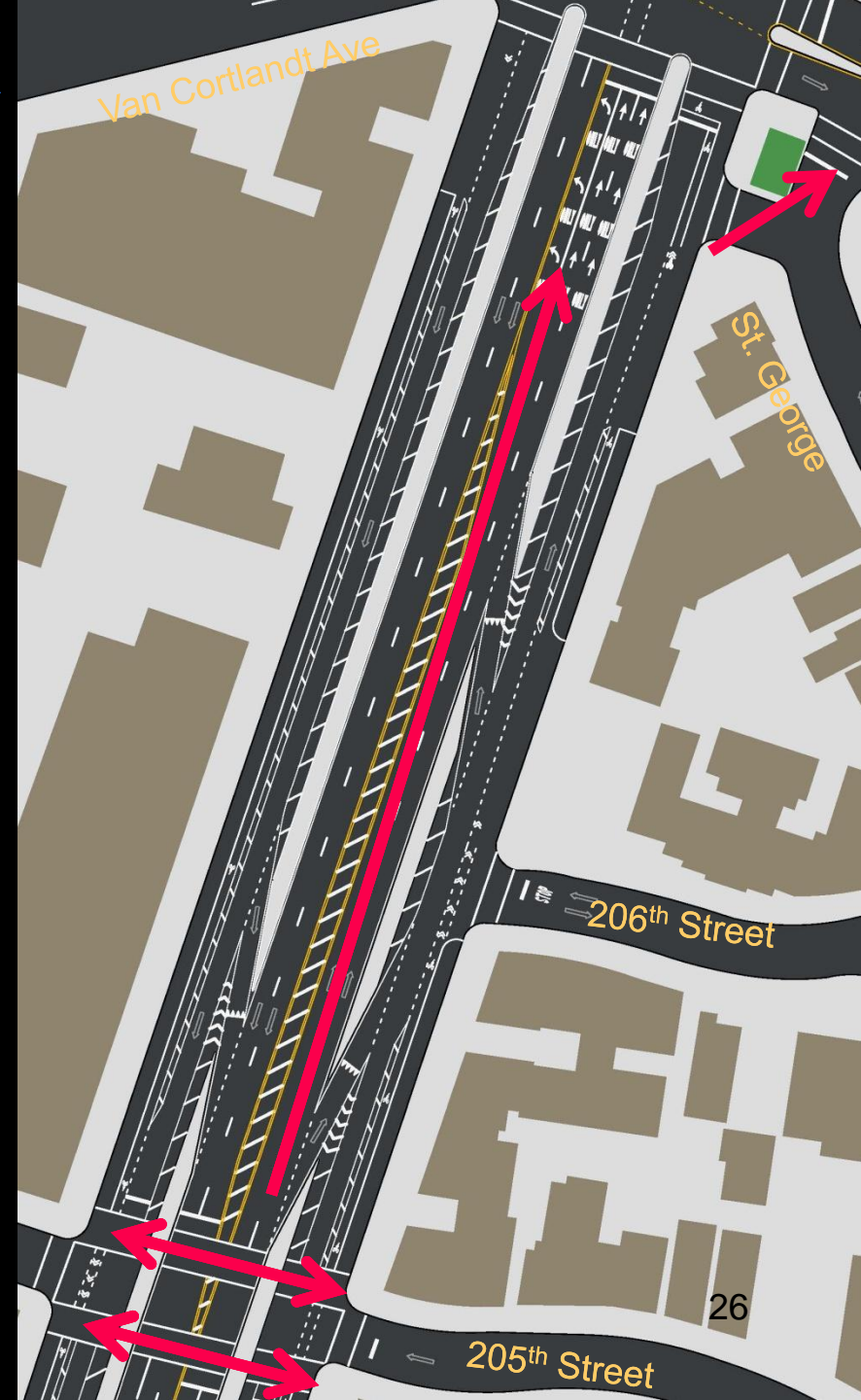
# South of Van Cortlandt

Existing Conditions

Excess NB travel lanes

Long crosswalks

St. George is used as cut-through



# South of Van Cortlandt

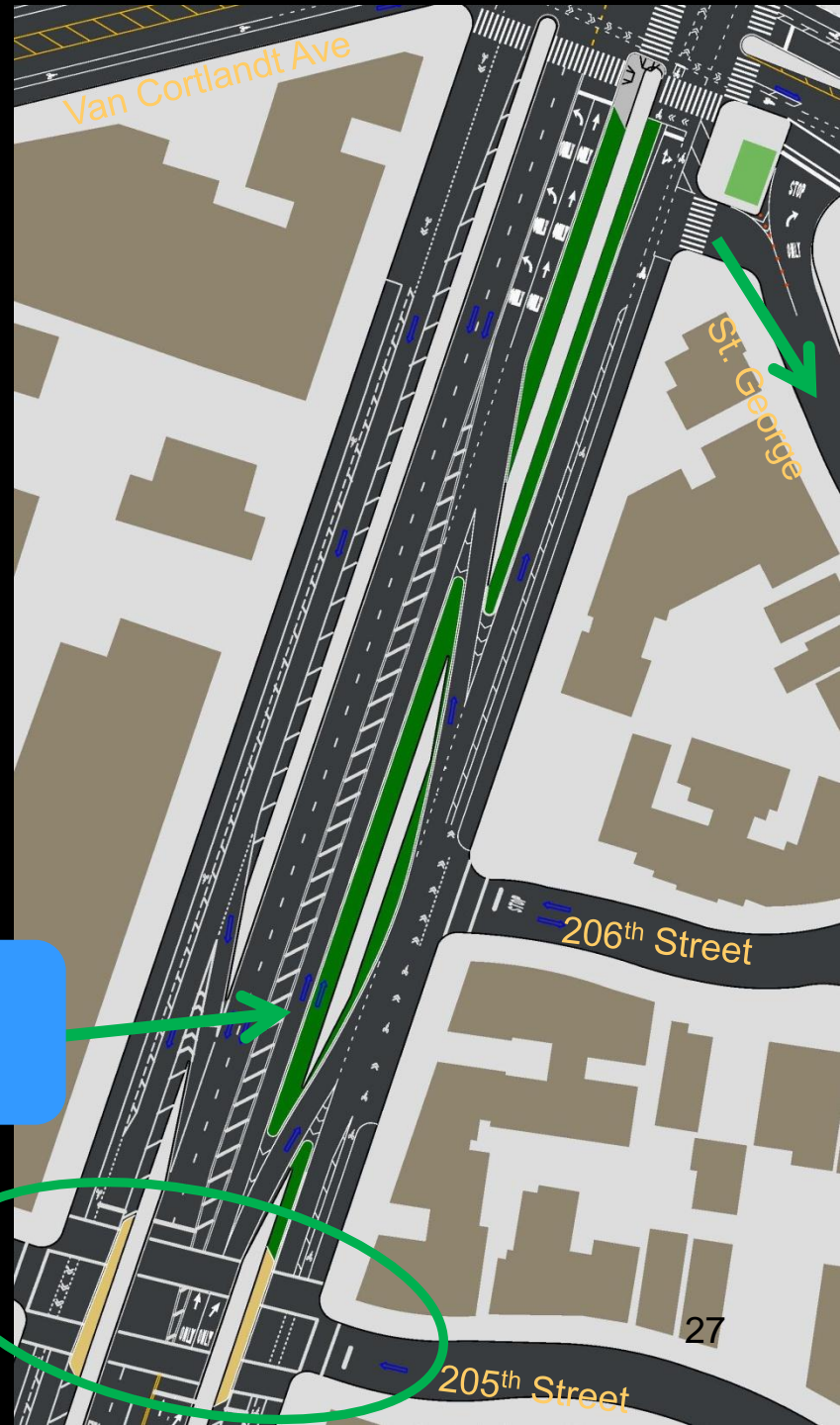
## Proposed Conditions

Travel lanes match  
vehicle volume

Shorter crosswalks

St. George is local  
access only

Colored  
Roadbed  
Treatment



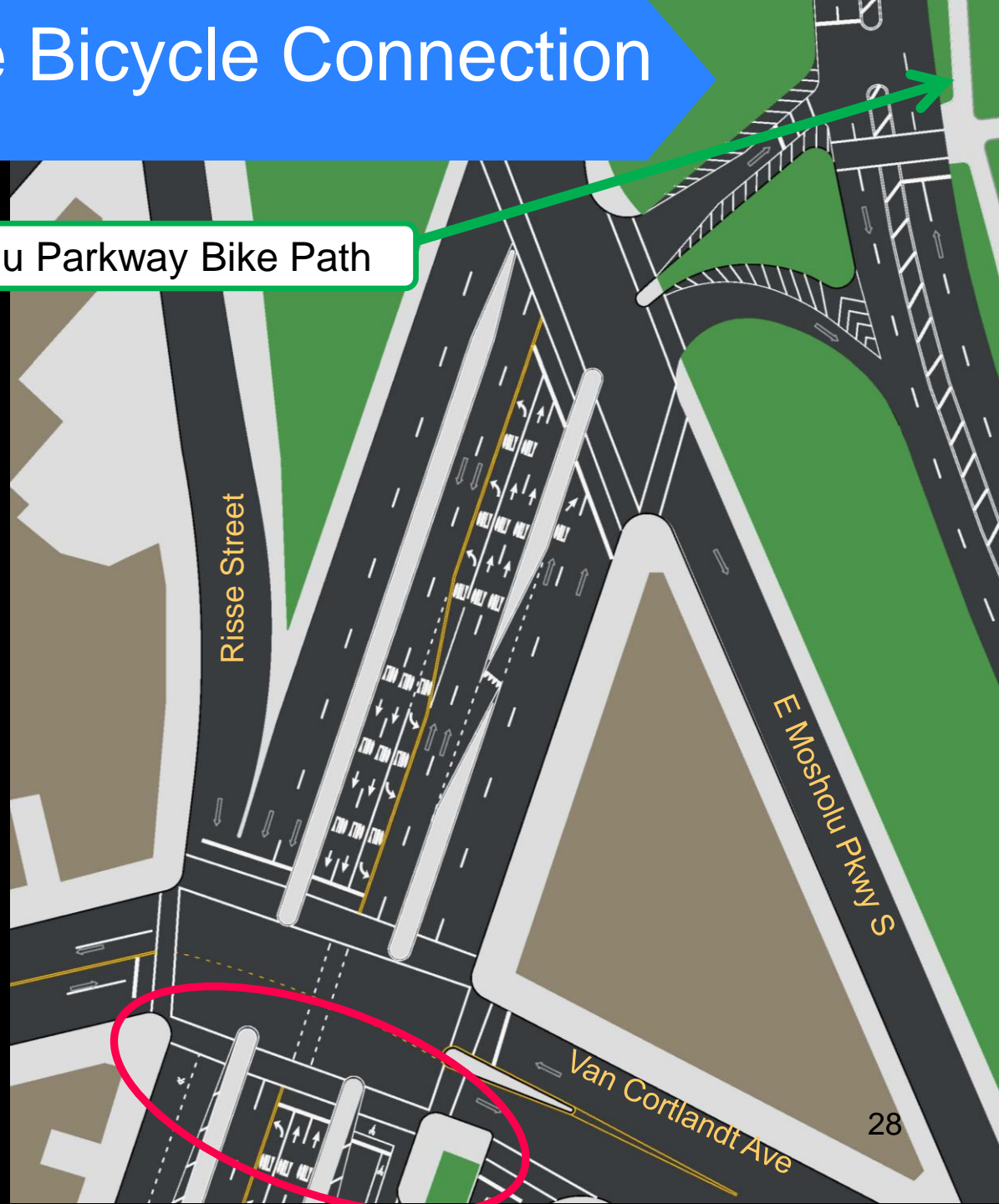
# Grand Concourse Bicycle Connection

Existing Conditions

Mosholu Parkway Bike Path

Bicycle facility stops two blocks short of Mosholu Park Bike Path

Van Cortlandt is on bicycle master plan



# Grand Concourse Bicycle Connection

Proposed Conditions

Two-way bicycle connection on NB service road

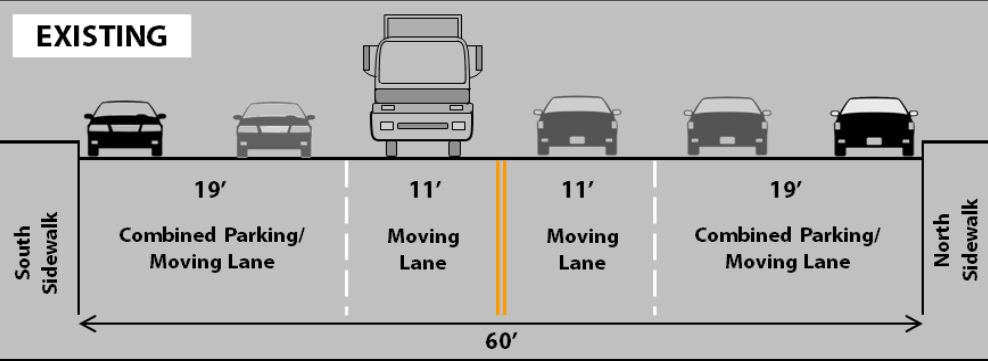
Connection via new shared sidewalk and safety island



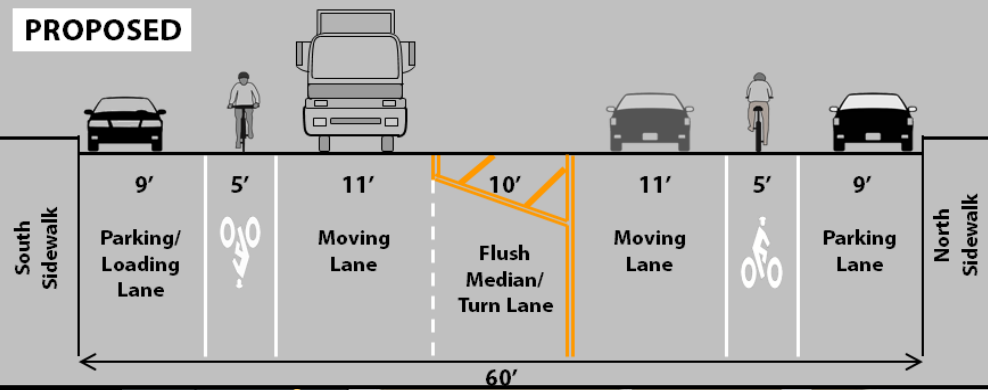
# Van Cortlandt Avenue

## Jerome to Mosholu Parkway

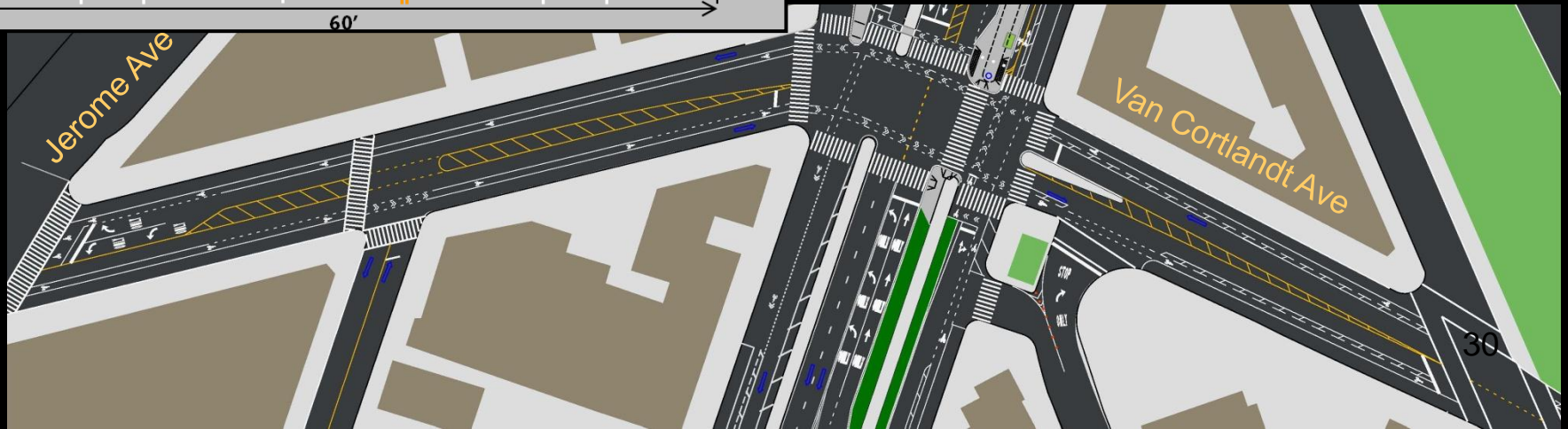
### EXISTING



### PROPOSED



Existing View East



# Plan Summary

## Improvements for Grand Concourse Mosholu Parkway to E. 205<sup>th</sup> Street:

1. Match travel lanes to volume
2. Shorten crosswalks
3. Extend and landscape medians
4. Construct new sidewalks and sidewalk extensions
5. Close northbound right onto Mosholu slip road to simplify intersection + provide safe pedestrian crossing
6. Create new bus stop boarding plaza and new safe bus route
7. Add parking
8. Complete bicycle connection to Mosholu Parkway Bike Path



[www.nyc.gov/dot](http://www.nyc.gov/dot)

**Thank  
You**