



# Maspeth Queens Truck Impact Reduction Project

## Master Plan Update

June 2016

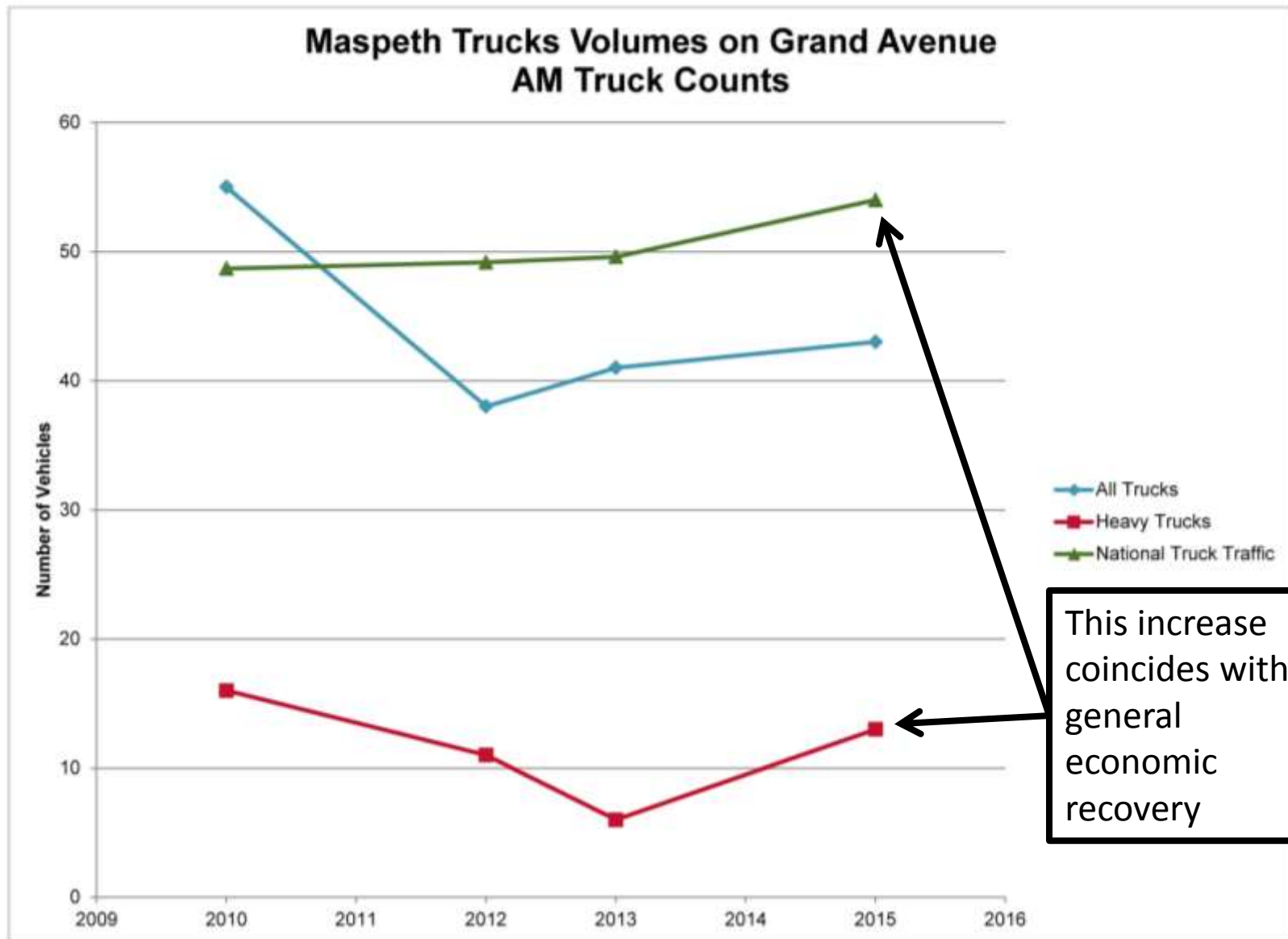
# Executive Summary

- ▶ DOT implemented roadway changes in Maspeth, but with limited success in rerouting truck traffic
- ▶ DOT has developed potential solutions to more successfully reroute truck traffic
- ▶ DOT is conducting public outreach to gain buy-in before finalizing the Master Plan
- ▶ Goals:
  - ▶ Increase truck usage of Bypass route
  - ▶ Reroute trucks away from Residential Streets

# Project Area



# Project Area



# Potential Solution:

## Improve Public Outreach Short Term

- ▶ Outreach to companies needs to be wider than just Maspeth IBZ
- Companies located in Flushing/Metropolitan/Morgan/Bushwick Aves.
- Door knocking exercise/handing out truck maps to companies in this area

**TRUCK DRIVERS:**  
Improve your travel time,  
use the Maspeth Bypass.



Look for these signs for the best  
route into and out of Maspeth:

**TRUCKS**  
WEST  
495  
↑

**TRUCKS**  
EAST  
495  
↗

  
**Trucks  
To Maspeth  
Use Exit 18**

**TRUCKS**  
To Maspeth  
↑

**TRUCKS**  
To Bklyn  
→

See map on other side

To sign up for e-updates on this and other projects, visit [www.nyc.gov/dotnews](http://www.nyc.gov/dotnews). For additional information, contact the DOT Queens Borough Commissioner's Office at [qbc@dotnyc.gov](mailto:qbc@dotnyc.gov) or (212) 839-2510 or visit our website at [www.nyc.gov/html/dot/html/motorist/maspeth.shtml](http://www.nyc.gov/html/dot/html/motorist/maspeth.shtml)

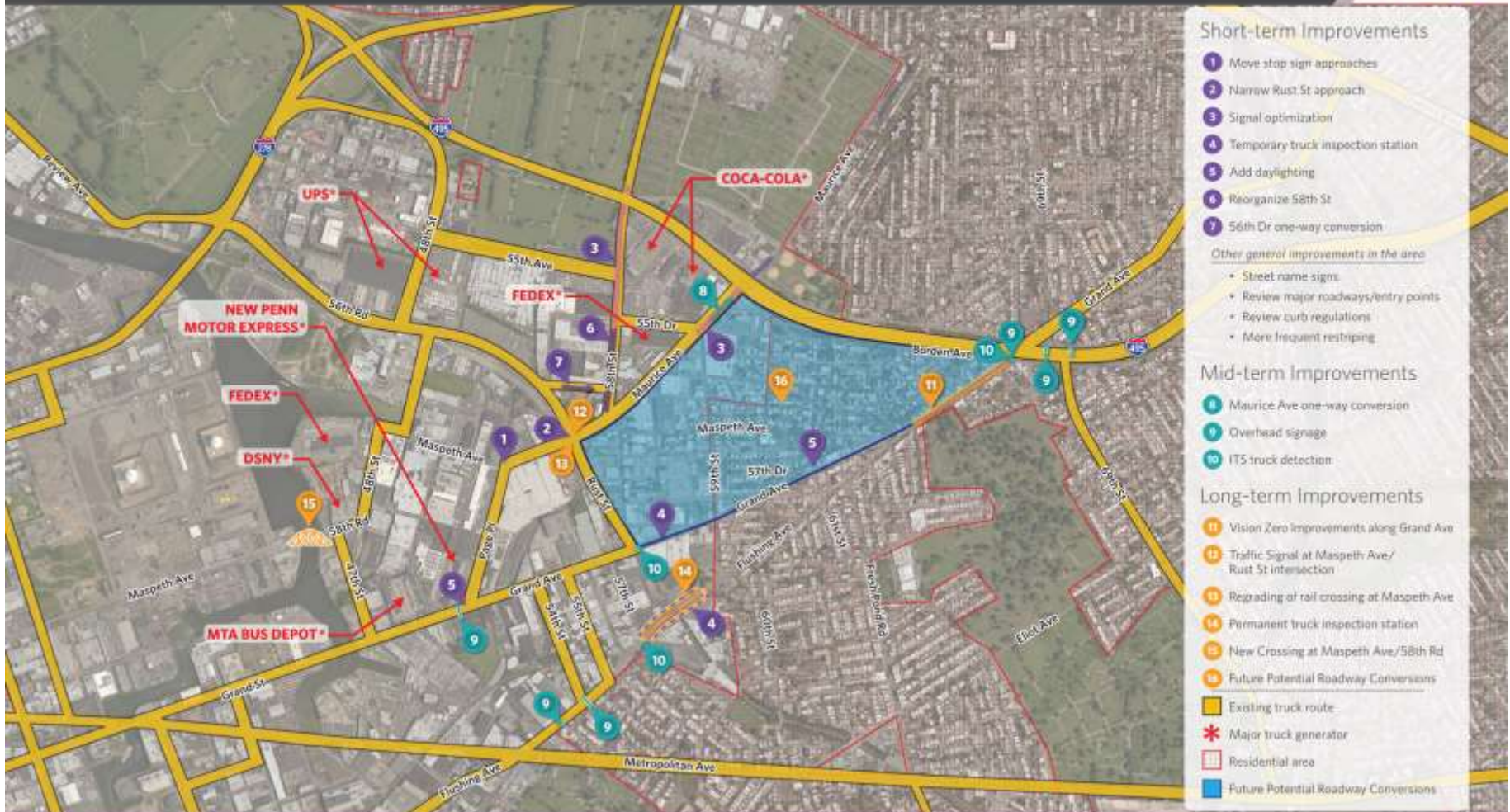




# Maspeth Master Plan Map DRAFT

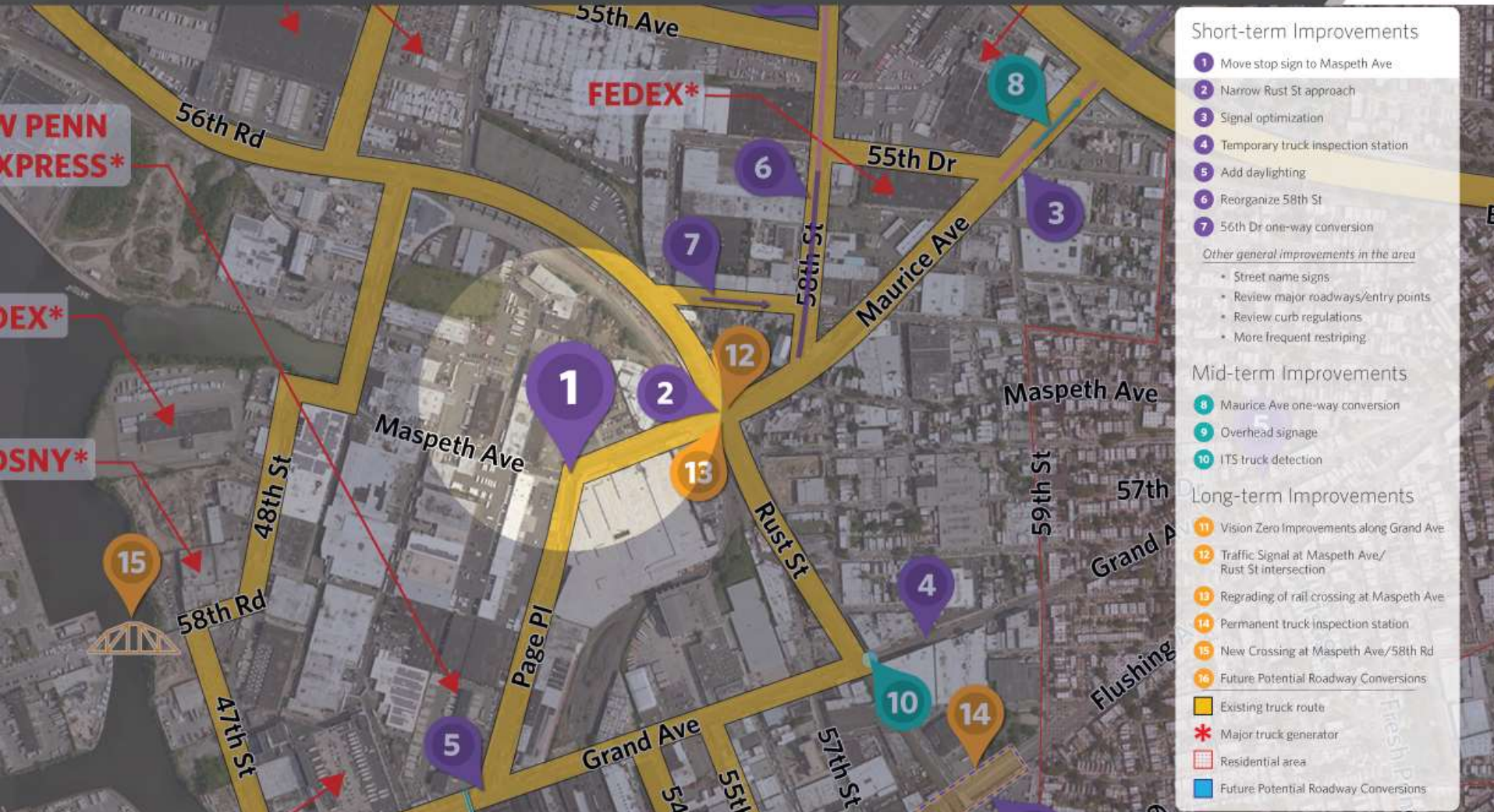
MASPETH BYPASS | TRUCK IMPACT REDUCTION PROJECT

## Proposed Transportation Improvements



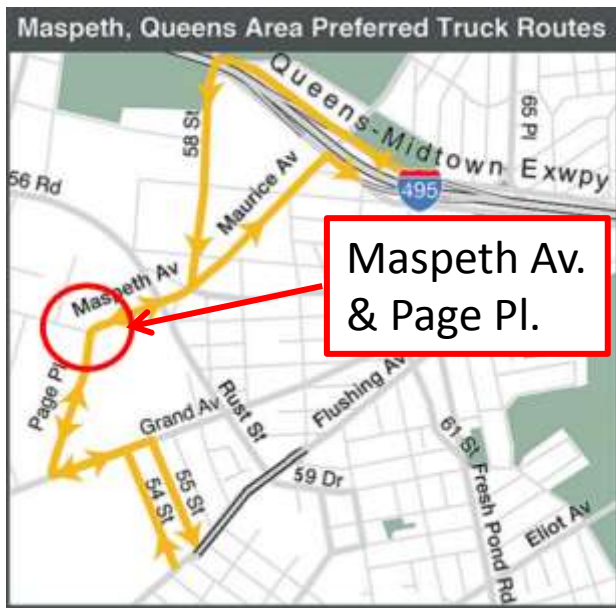


# Proposed Transportation Improvements



# Potential Solution: Improve Bypass Short Term

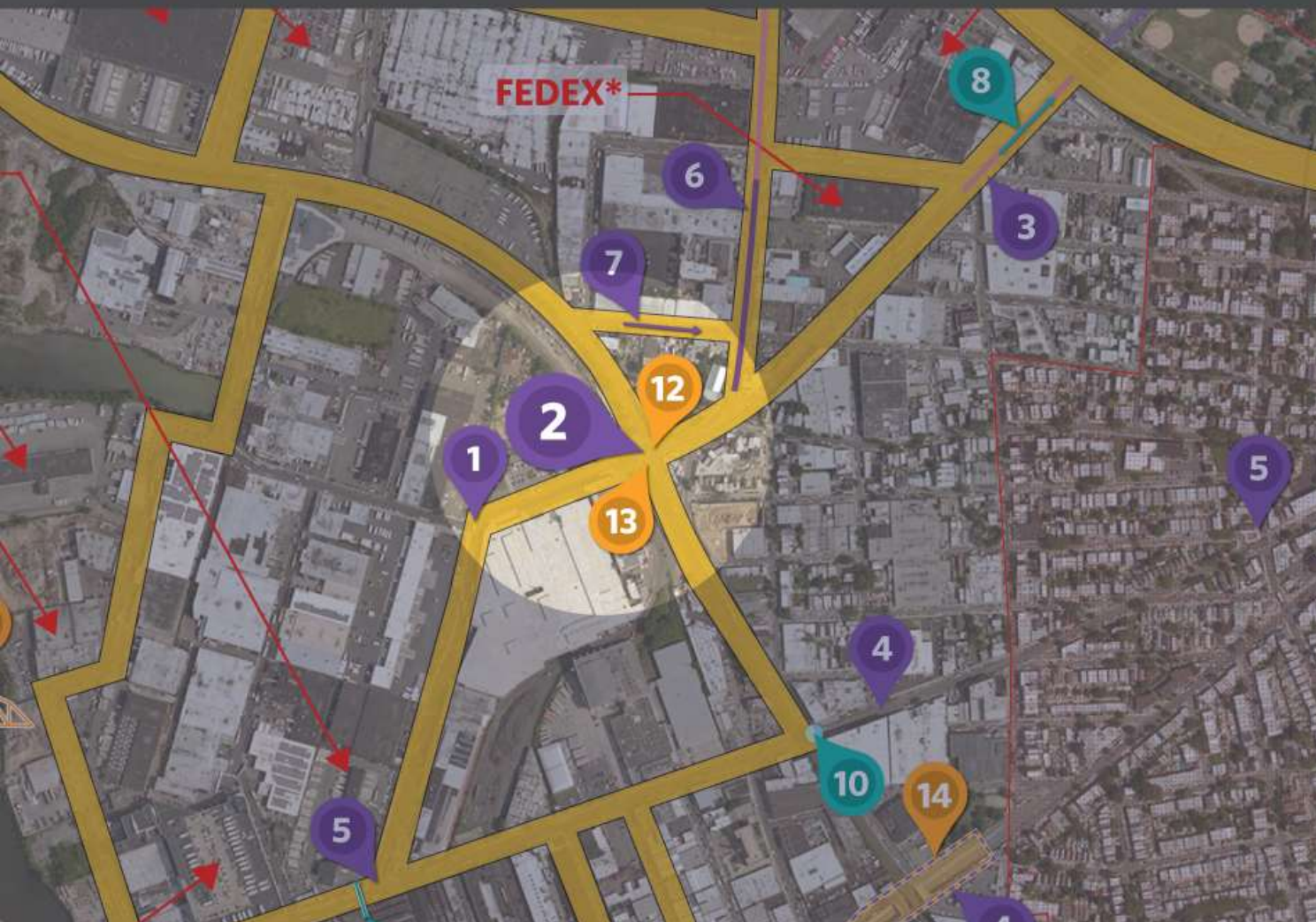
- ▶ Review signal timings and coordination
- ▶ Change stop sign locations along the Bypass route to prioritize truck movements



- Existing Stop Sign Location to be Removed
- Proposed Stop Sign Location



# Proposed Transportation Improvements



## Short-term Improvements

- 1 Move stop sign to Maspeth Ave
- 2 Narrow Rust St approach
- 3 Signal optimization
- 4 Temporary truck inspection station
- 5 Add daylighting
- 6 Reorganize 58th St
- 7 56th Dr one-way conversion

### Other general improvements in the area

- Street name signs
- Review major roadways/entry points
- Review curb regulations
- More frequent restriping

## Mid-term Improvements

- 8 Maurice Ave one-way conversion
- 9 Overhead signage
- 10 ITS truck detection

## Long-term Improvements

- 11 Vision Zero Improvements along Grand Ave
- 12 Traffic Signal at Maspeth Ave/Rust St intersection
- 13 Regrading of rail crossing at Maspeth Ave
- 14 Permanent truck inspection station
- 15 New Crossing at Maspeth Ave/58th Rd
- 16 Future Potential Roadway Conversions

- Existing truck route
- Major truck generator
- Residential area
- Future Potential Roadway Conversions

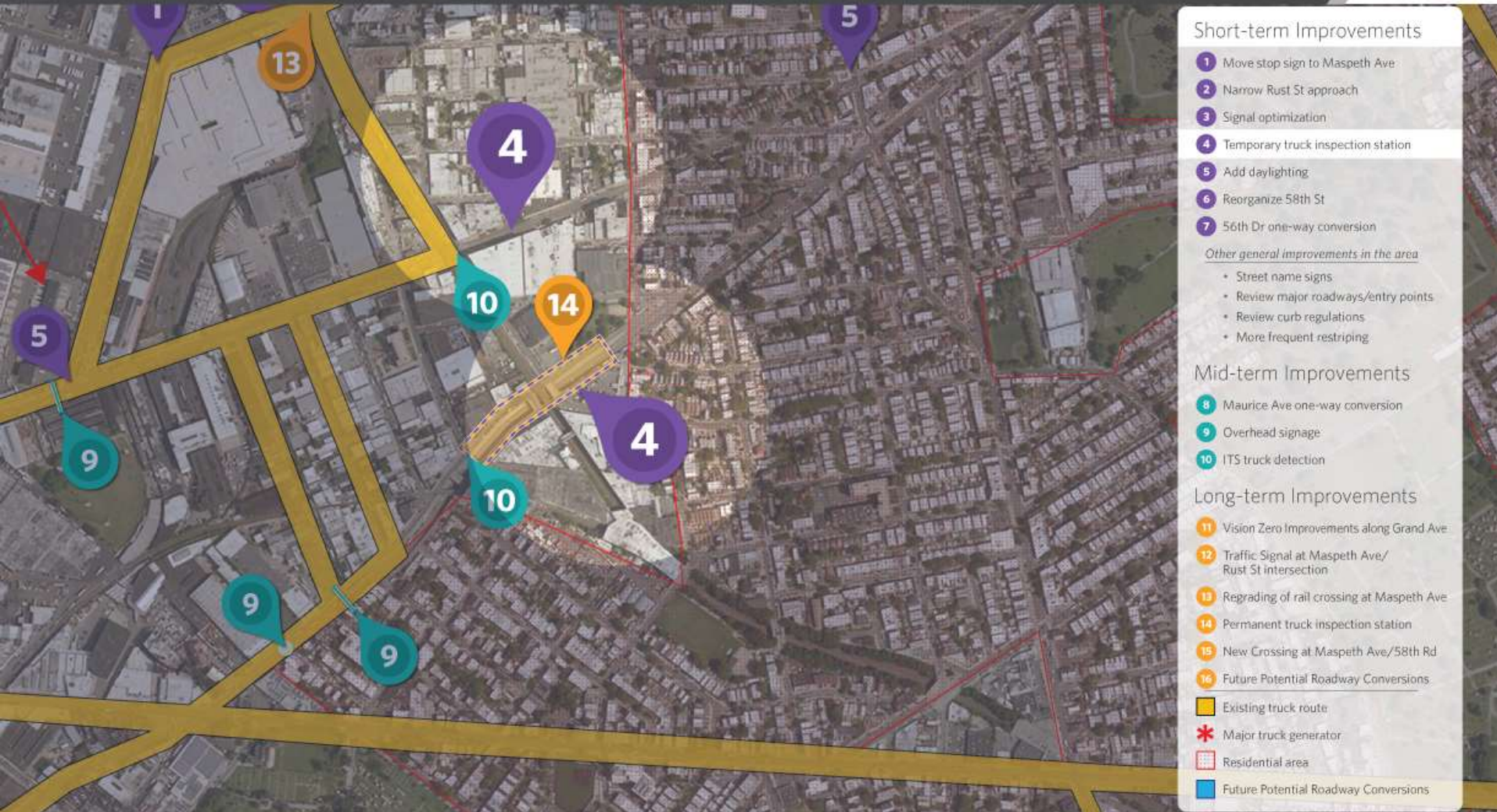
# Potential Solution: Restripe Rust Street at Maspeth Avenue



► Narrow Rust Street to  
one lane



# Proposed Transportation Improvements



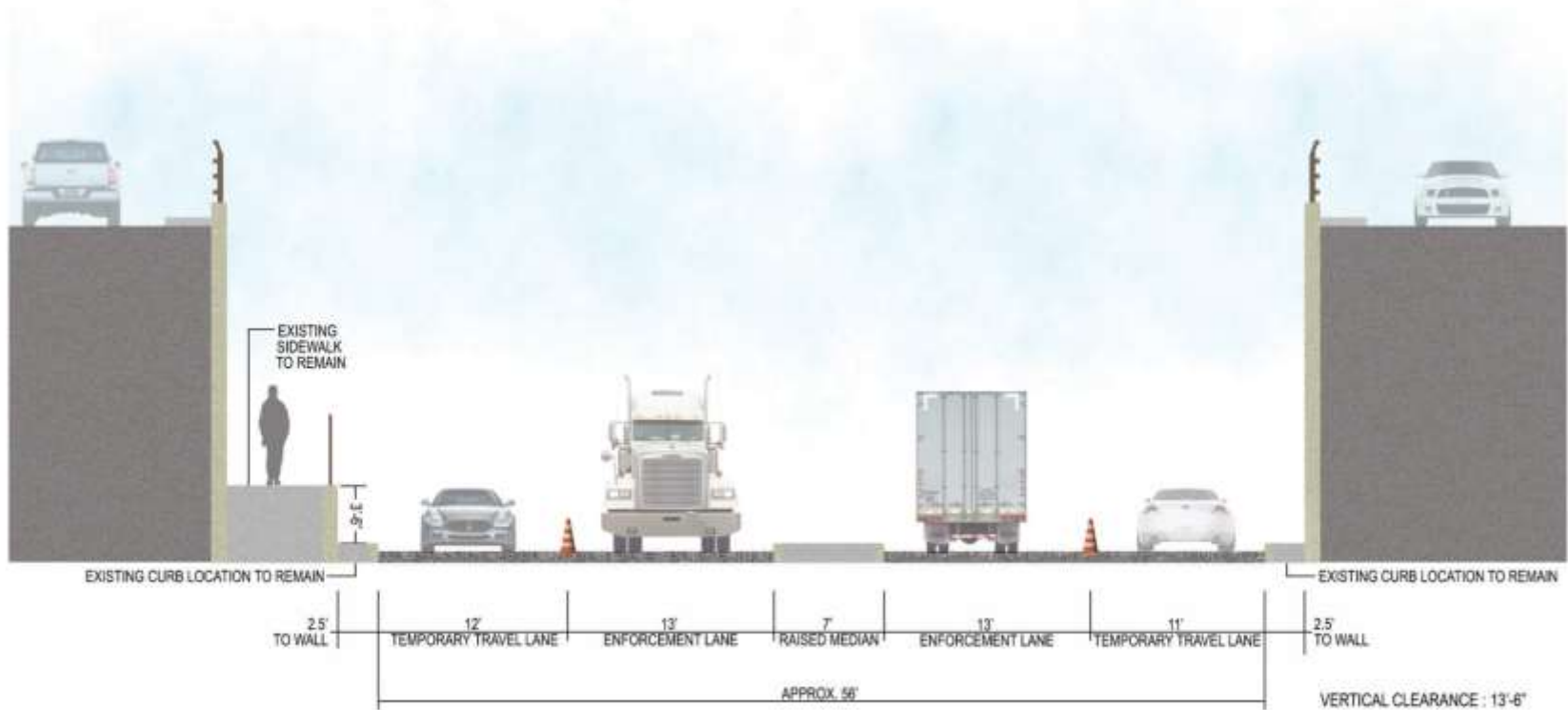


# Potential Solution:

## Temporary Truck Enforcement Station

- ▶ Objective of the Enforcement Station
  - Provide a safe place for enforcement officials to stop, inspect trucks and interview drivers
- ▶ Trucks at this location will be truck route non-compliant (if not making a local delivery)
  - Can be used to stop trucks travelling in both directions
  - Issued a citation for not following truck route
- ▶ Acts as a deterrence for trucks using Flushing Avenue as a shortcut

# Potential Solution: Temporary Enforcement



**FLUSHING AVENUE TEMPORARY TRUCK ENFORCEMENT STATION - SECTION**

# Potential Solution: Temporary Enforcement

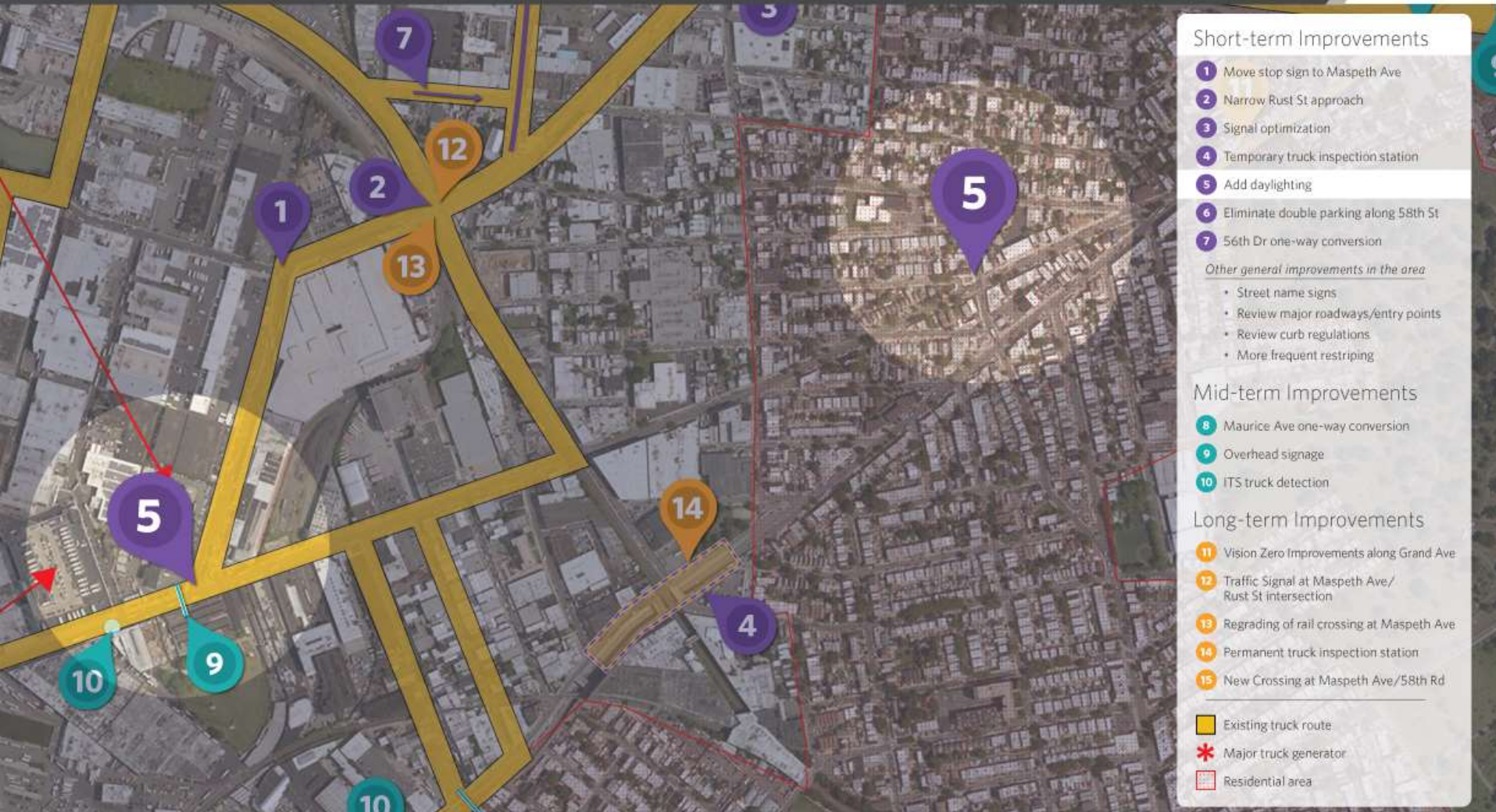
- Pilot Location: Flushing Avenue Underpass



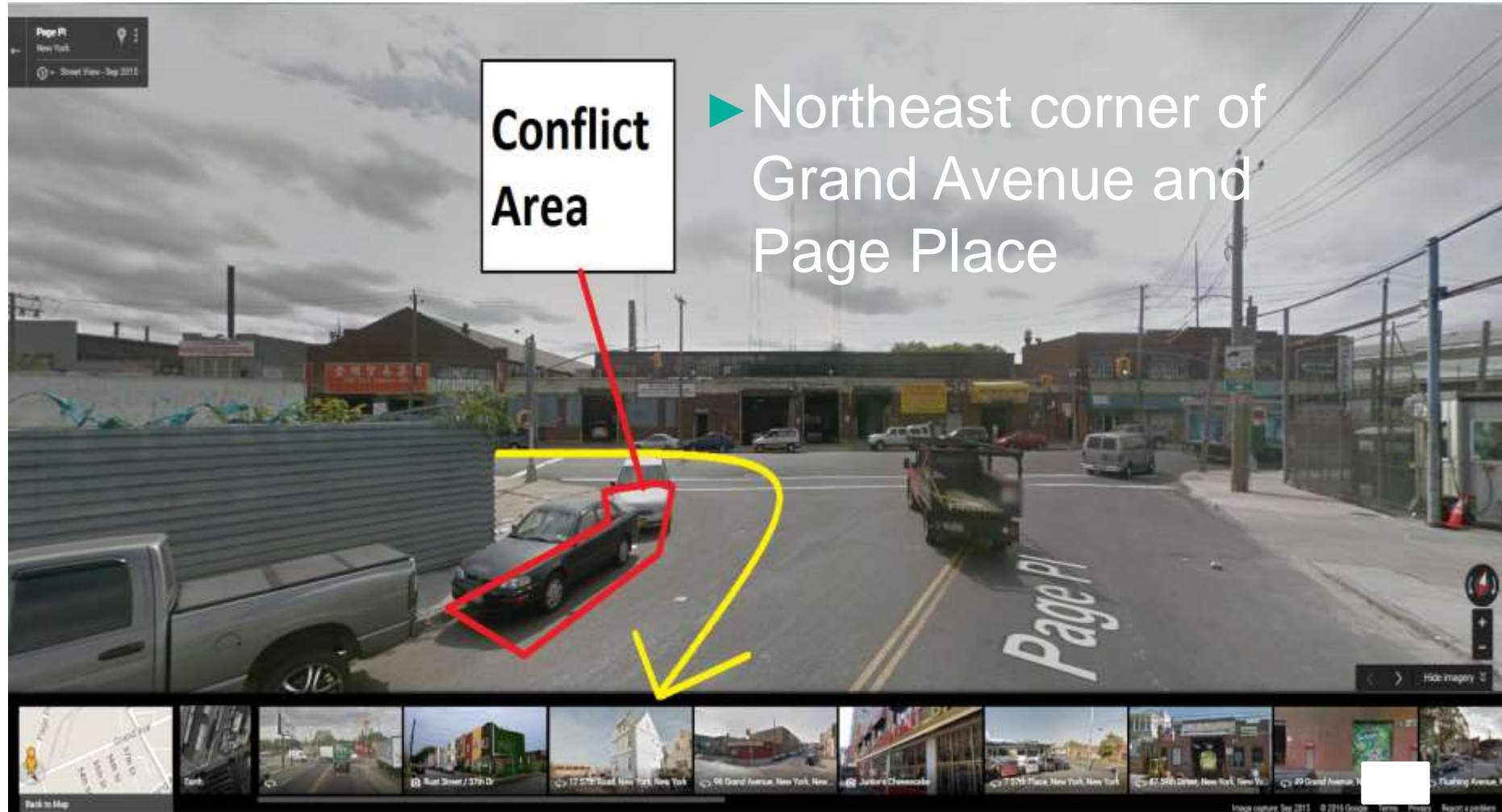
**Viaduct used for Truck Enforcement  
Station**



# Proposed Transportation Improvements



# Potential Solution: Add Daylighting





# Potential Solution: Add Daylighting





# Potential Solution: Add Daylighting

- ▶ Northwest corner of  
Grand Avenue and  
57<sup>th</sup> Drive

**Conflict  
Area**



# Proposed Transportation Improvements





# Potential Solution: Compliance

- Consistent double parking taking place in highly active industrial zone



# Potential Solution: Street Reconfiguration

- ▶ Consistent double parking taking place in highly active industrial zone
- ▶ Existing condition:





# Potential Solution: Street Reconfiguration

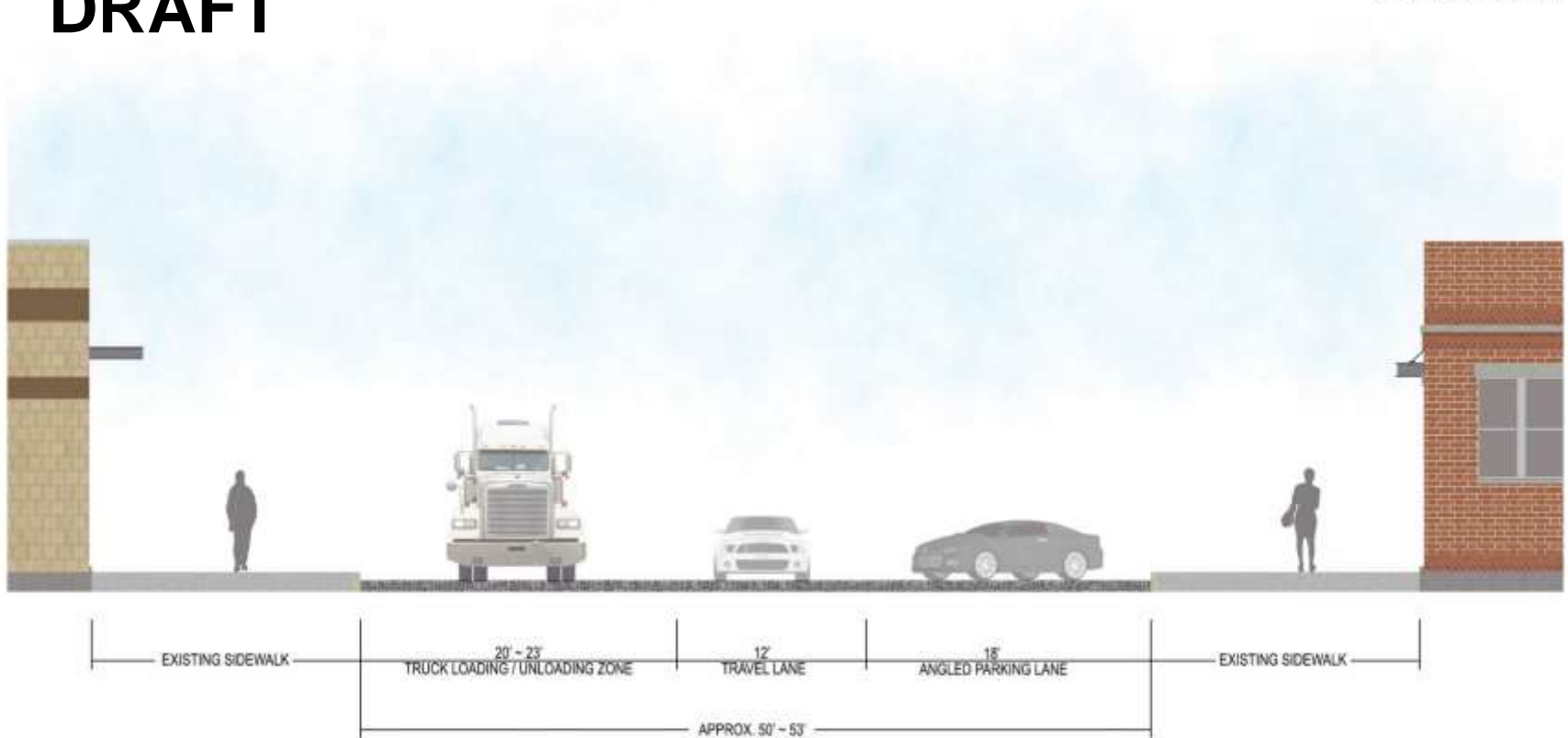
- Study feasibility of reconfiguring 58<sup>th</sup> Street to accommodate bypass traffic and local uses



# Potential Solution: Street Reconfiguration

**DRAFT**

**OPTION 1**



**58th STREET PROPOSED LAYOUT - SECTION**



# Proposed Transportation Improvements



# Potential Solution:

## Improve Bypass Mid-Term

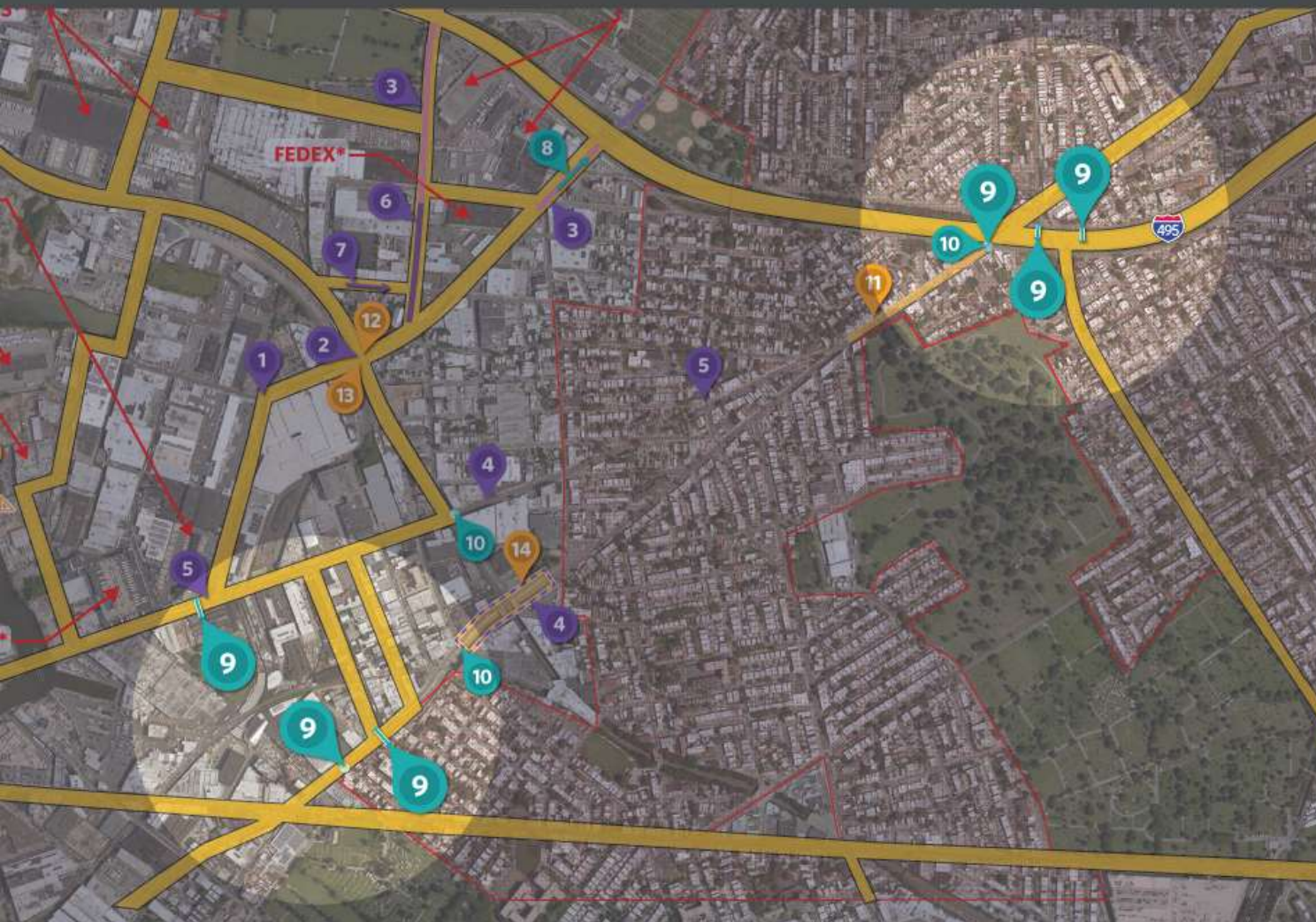
- ▶ Study feasibility of extending the one-way streets of the Maspeth Bypass to LIE / Borden Avenue
- ▶ This may reduce number of turning movements at Borden Avenue / Maurice Avenue and Maurice Avenue / 55<sup>th</sup> Drive / 59<sup>th</sup> Street, allowing for better traffic flow through this intersection





# MASPETH BYPASS | TRUCK IMPACT REDUCTION PROJECT

## Proposed Transportation Improvements



### Short-term Improvements

- 1 Move stop sign to Maspeth Ave
- 2 Narrow Rust St approach
- 3 Signal optimization
- 4 Temporary truck inspection station
- 5 Add daylighting
- 6 Reorganize 58th St
- 7 56th Dr one-way conversion

#### Other general improvements in the area

- Street name signs
- Review major roadways/entry points
- Review curb regulations
- More frequent restriping

### Mid-term Improvements

- 8 Maurice Ave one-way conversion
- 9 Overhead signage
- 10 ITS truck detection

### Long-term Improvements

- 11 Vision Zero Improvements along Grand Ave
- 12 Traffic Signal at Maspeth Ave/Rust St intersection
- 13 Regrading of rail crossing at Maspeth Ave
- 14 Permanent truck inspection station
- 15 New Crossing at Maspeth Ave/58th Rd
- 16 Future Potential Roadway Conversions

- Existing truck route
- Major truck generator
- Residential area
- Future Potential Roadway Conversions

# Potential Solution: Improve Bypass Mid-Term

- Existing Truck Signage is not effective at various locations in Maspeth





# Potential Solution: Improve Bypass Mid-Term

- Study Feasibility of designing high visibility custom truck signage



Typical overhead SBS sign in Manhattan



Custom overhead sign at Holland Tunnel

# Potential Solution:

## Improve Bypass Mid-Term

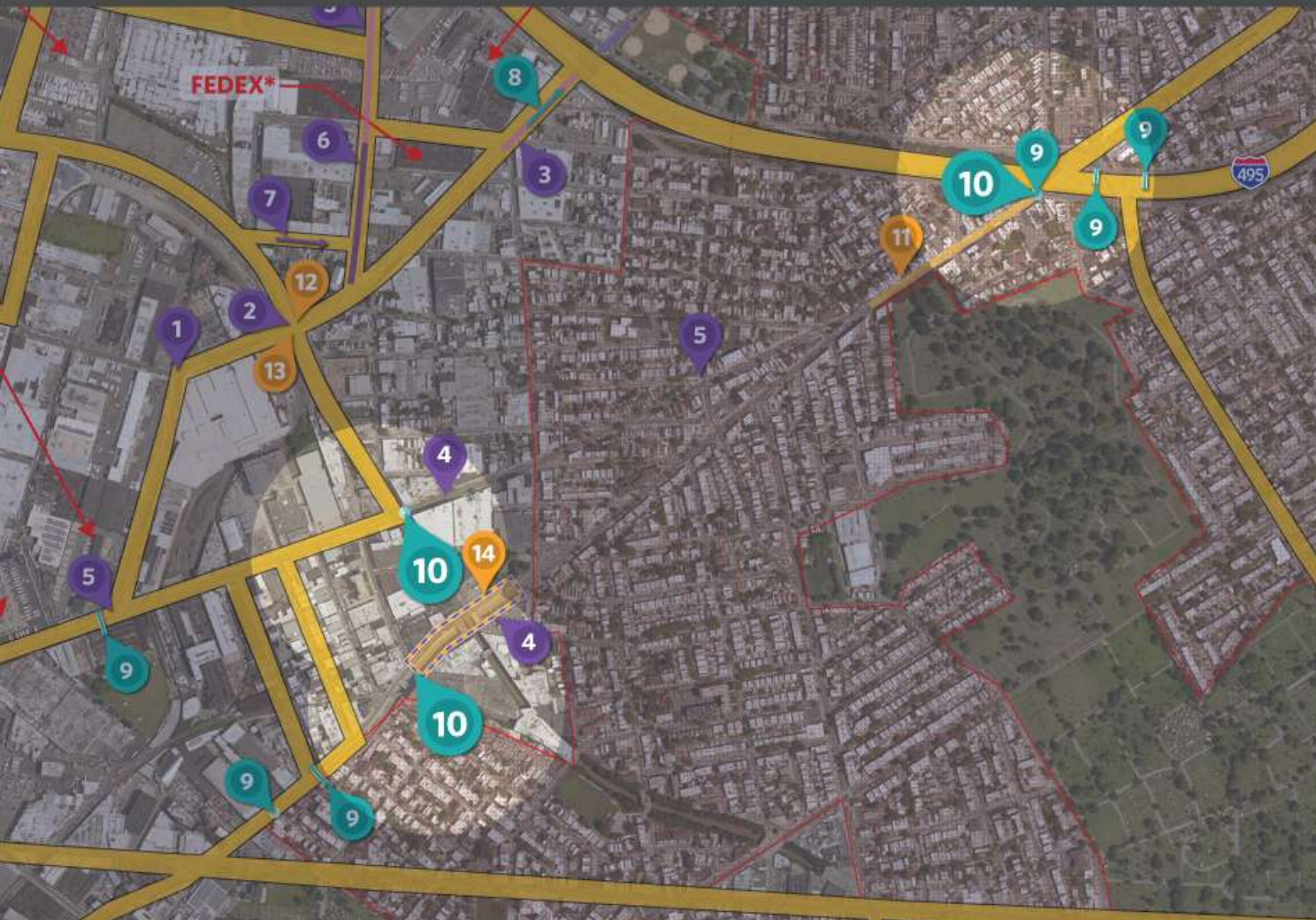
- ▶ Study Feasibility of designing high visibility custom truck signage
- Location: Flushing Avenue and 53<sup>rd</sup> Street



Conceptual rendering of custom signage



# Proposed Transportation Improvements



## Short-term Improvements

- 1 Move stop sign to Maspeth Ave
- 2 Narrow Rust St approach
- 3 Signal optimization
- 4 Temporary truck inspection station
- 5 Add daylighting
- 6 Reorganize 58th St
- 7 56th Dr one-way conversion

### Other general improvements in the area

- Street name signs
- Review major roadways/entry points
- Review curb regulations
- More frequent restriping

## Mid-term Improvements

- 8 Maurice Ave one-way conversion
- 9 Overhead signage
- 10 ITS truck detection

## Long-term Improvements

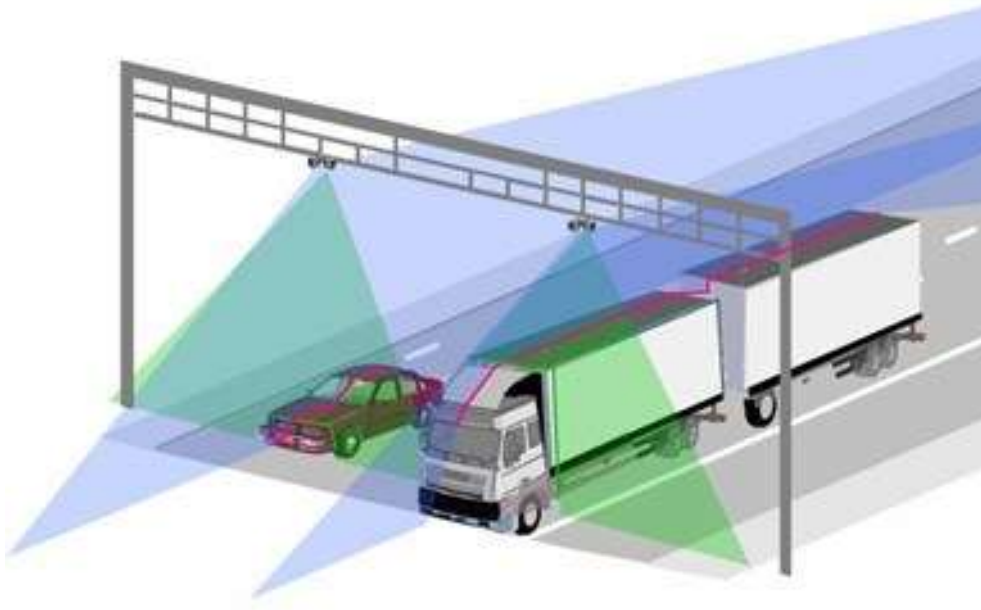
- 11 Vision Zero Improvements along Grand Ave
- 12 Traffic Signal at Maspeth Ave/Rust St intersection
- 13 Regrading of rail crossing at Maspeth Ave
- 14 Permanent truck inspection station
- 15 New Crossing at Maspeth Ave/58th Rd
- 16 Future Potential Roadway Conversions

- Existing truck route
- \* Major truck generator
- Residential area
- Future Potential Roadway Conversions

# Potential Solution:

## Improve Truck Compliance Mid-Term

- ▶ Study Feasibility of Designing ITS Solutions to Track Truck Traffic
  - Digital signs can be activated by a sensor to deter approaching trucks from turning onto Grand Avenue or Flushing Avenue



Typical laser detector installation





# Potential Solution:

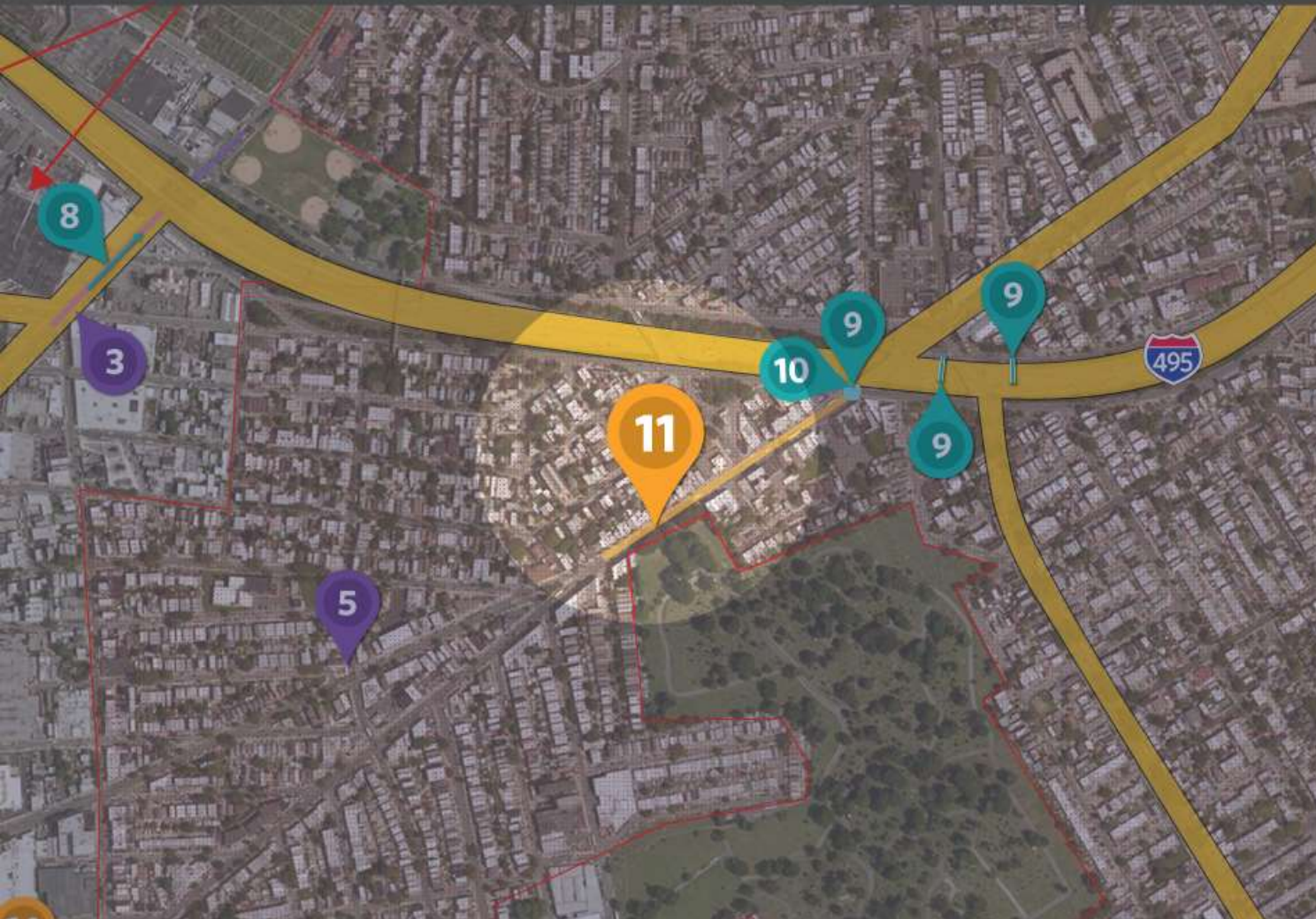
## Improve Bypass Mid-Term

- ▶ Study Feasibility of Designing ITS Solutions to Track Truck Traffic
  - Use smart-city analytics to gather data from cameras, laser classifiers and overheight detectors.
  - Potential location: Flushing Avenue Underpass



Typical laser detector installation

# Proposed Transportation Improvements



## Short-term Improvements

- 1 Move stop sign to Maspeth Ave
- 2 Narrow Rust St approach
- 3 Signal optimization
- 4 Temporary truck inspection station
- 5 Add daylighting
- 6 Reorganize 58th St
- 7 56th Dr one-way conversion

### Other general improvements in the area

- Street name signs
- Review major roadways/entry points
- Review curb regulations
- More frequent restriping

## Mid-term Improvements

- 8 Maurice Ave one-way conversion
- 9 Overhead signage
- 10 ITS truck detection

## Long-term Improvements

- 11 Vision Zero Improvements along Grand Ave
- 12 Traffic Signal at Maspeth Ave/Rust St intersection
- 13 Regrading of rail crossing at Maspeth Ave
- 14 Permanent truck inspection station
- 15 New Crossing at Maspeth Ave/58th Rd
- 16 Future Potential Roadway Conversions

- Existing truck route
- Major truck generator
- Residential area
- Future Potential Roadway Conversions



# Potential Solution: Vision Zero Improvements at Grand Ave.



Grand Avenue Corridor

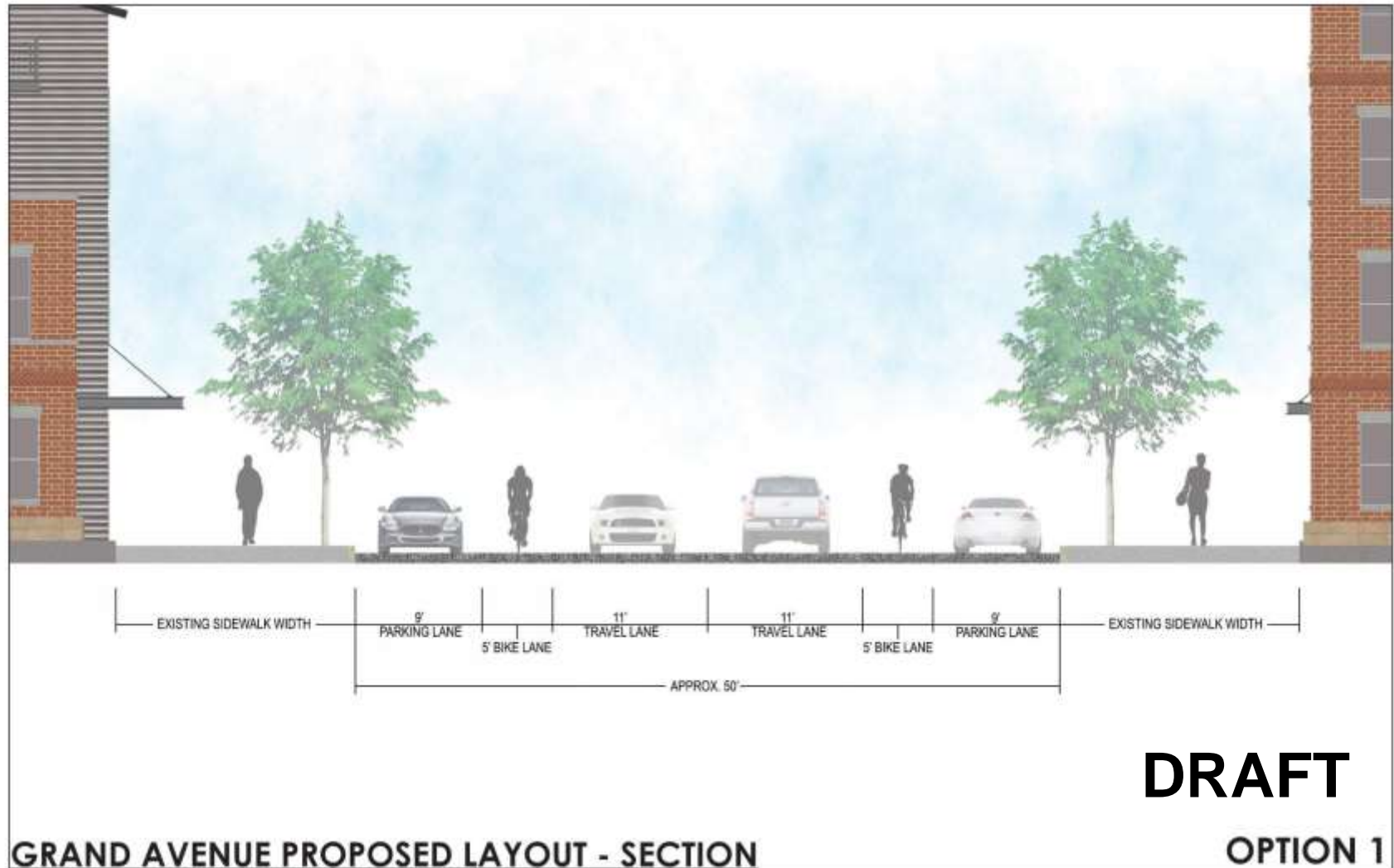


# Potential Solution: Vision Zero Improvements at Grand Ave.





# Potential Solution: Vision Zero Improvements at Grand Ave.



# Potential Solution:

## Vision Zero Improvements at Grand Ave.

GRAND AVENUE PROPOSED LAYOUT - PLAN VIEW  
OPTION 3



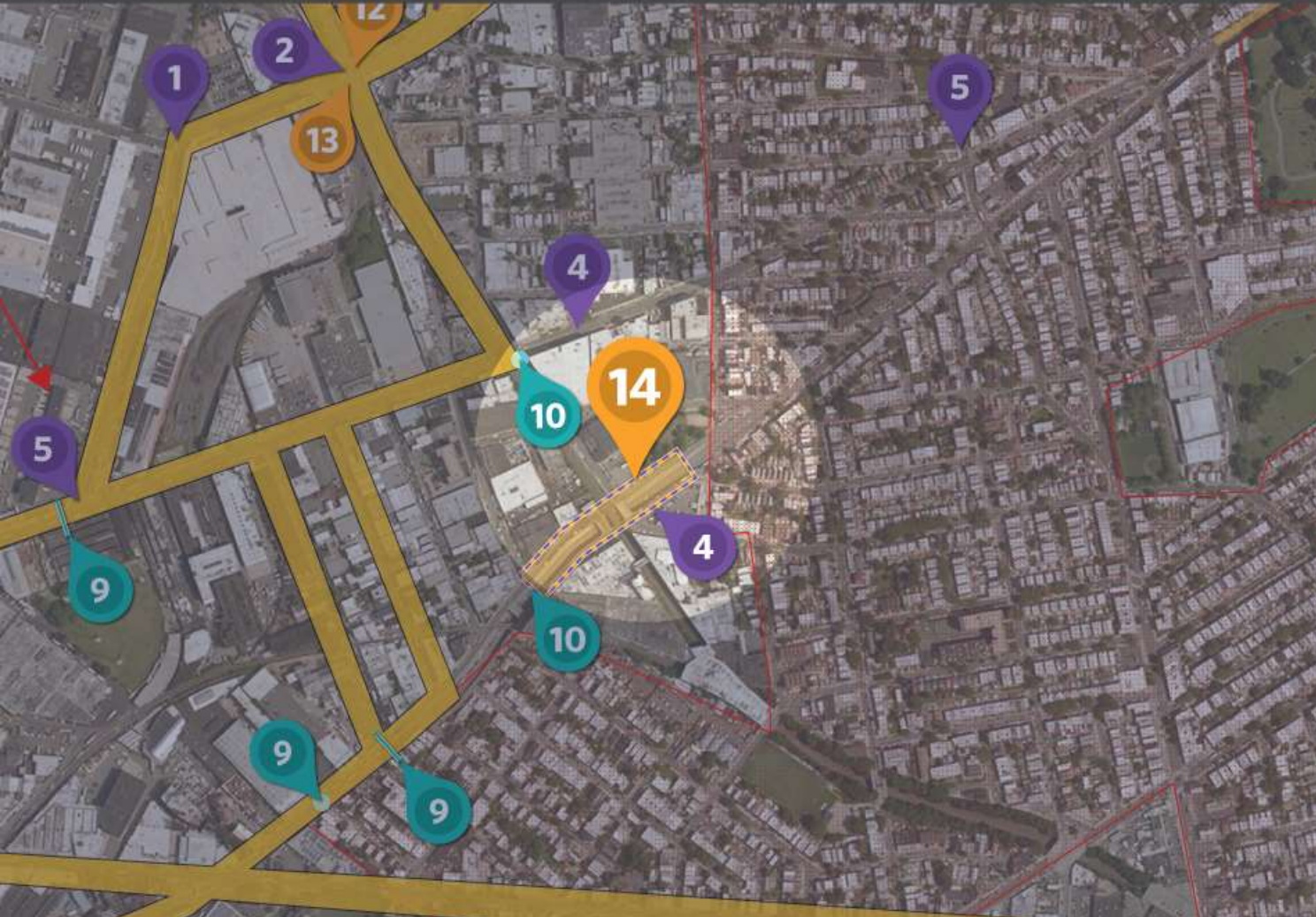


# Potential Solution: Vision Zero Improvements at Grand Ave.





# Proposed Transportation Improvements



## Short-term Improvements

- 1 Move stop sign to Maspeth Ave
- 2 Narrow Rust St approach
- 3 Signal optimization
- 4 Temporary truck inspection station
- 5 Add daylighting
- 6 Reorganize 58th St
- 7 56th Dr one-way conversion

### Other general improvements in the area

- Street name signs
- Review major roadways/entry points
- Review curb regulations
- More frequent restriping

## Mid-term Improvements

- 8 Maurice Ave one-way conversion
- 9 Overhead signage
- 10 ITS truck detection

## Long-term Improvements

- 11 Vision Zero Improvements along Grand Ave
- 12 Traffic Signal at Maspeth Ave/Rust St intersection
- 13 Regrading of rail crossing at Maspeth Ave
- 14 Permanent truck inspection station
- 15 New Crossing at Maspeth Ave/58th Rd
- 16 Future Potential Roadway Conversions

- Existing truck route
- Major truck generator
- Residential area
- Future Potential Roadway Conversions



# Potential Solution: Permanent Enforcement





# Potential Solution: Permanent Enforcement

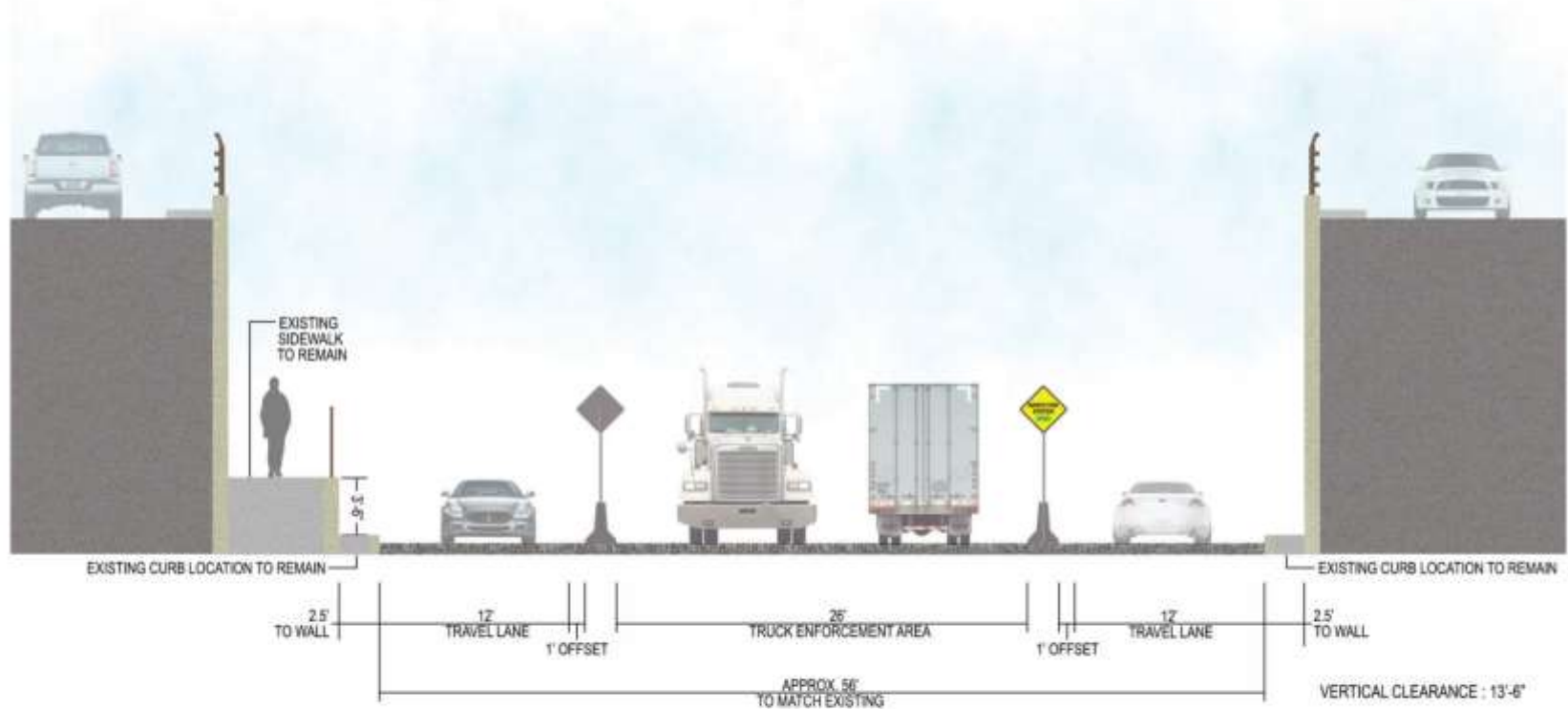




# Potential Solution: Permanent Enforcement

**DRAFT**

**OPTION 1**



**FLUSHING AVENUE PERMANENT TRUCK ENFORCEMENT STATION - SECTION**

# Next Steps

- ▶ Developing Draft Master Plan
- ▶ Incorporate public input into Final Master Plan