

# St. Stanislaus Kostka: School Safety Project

## Maspeth and Grand Avenue - Greenstreet Expansion



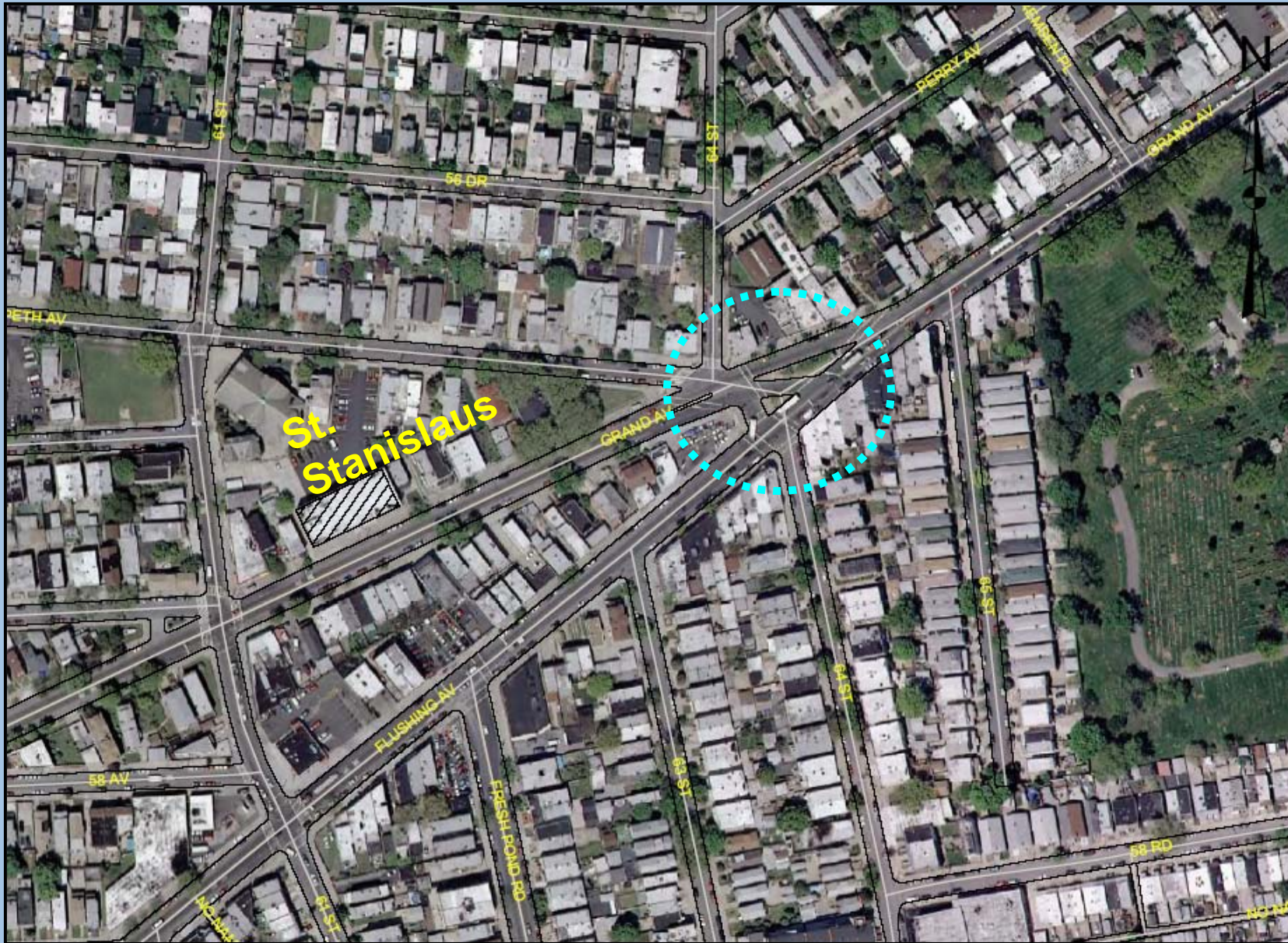
**Presentation to:  
Queens Community Board 5**



**April 29, 2008**



# Aerial Photo





# St. Stanislaus Kostka Priority School

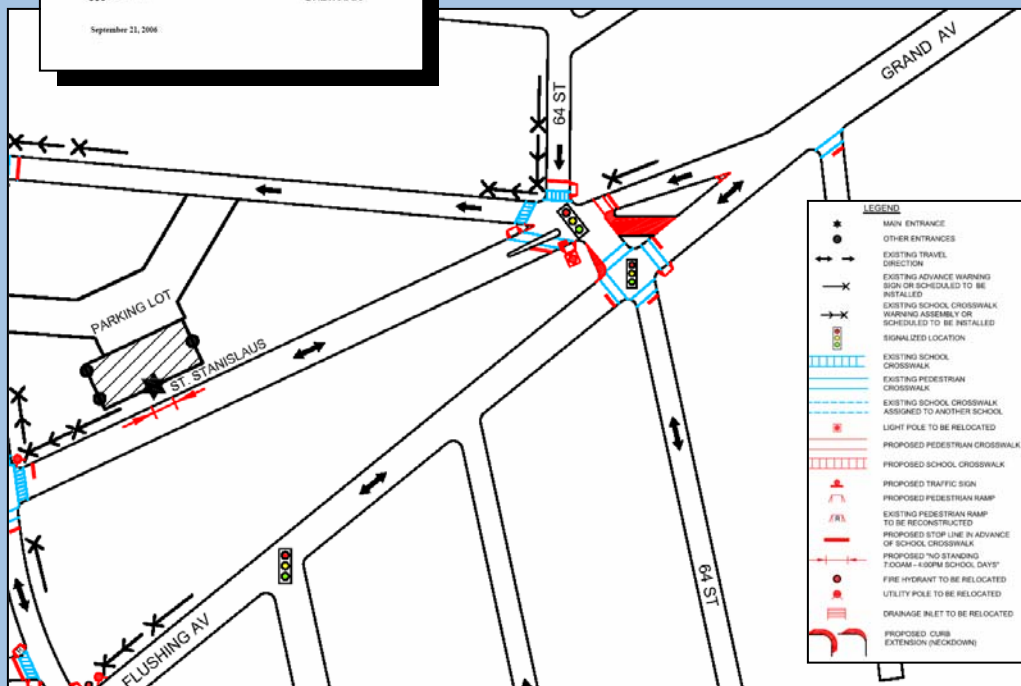


## Study found:

- Excessive Truck and Bus traffic on Grand Avenue in front of school
- Speeding on Grand Avenue – 85% percentile speed recorded 37MPH

## Final Report included safety recommendations to:

- Expand existing Greenstreet islands to eliminate cut though
- Modify and coordinate traffic signals with new geometry of triangle
- Install new crosswalks and advance stop bars



Students on Grand Ave

# Safety Issues

- Excessive speeds recorded on Grand Avenue
- Trucks on Grand Avenue a concern of school officials and community



## Goals

- **Improved conditions for students walking to school**
- Reduction of speeds on Grand Avenue adjacent to school
- Discouraging Trucks from using Grand Avenue
- Community Beautification
- Maintain existing parking
- Provide shorter crosswalks
- PlaNYC goals -- More Trees



# Existing movements

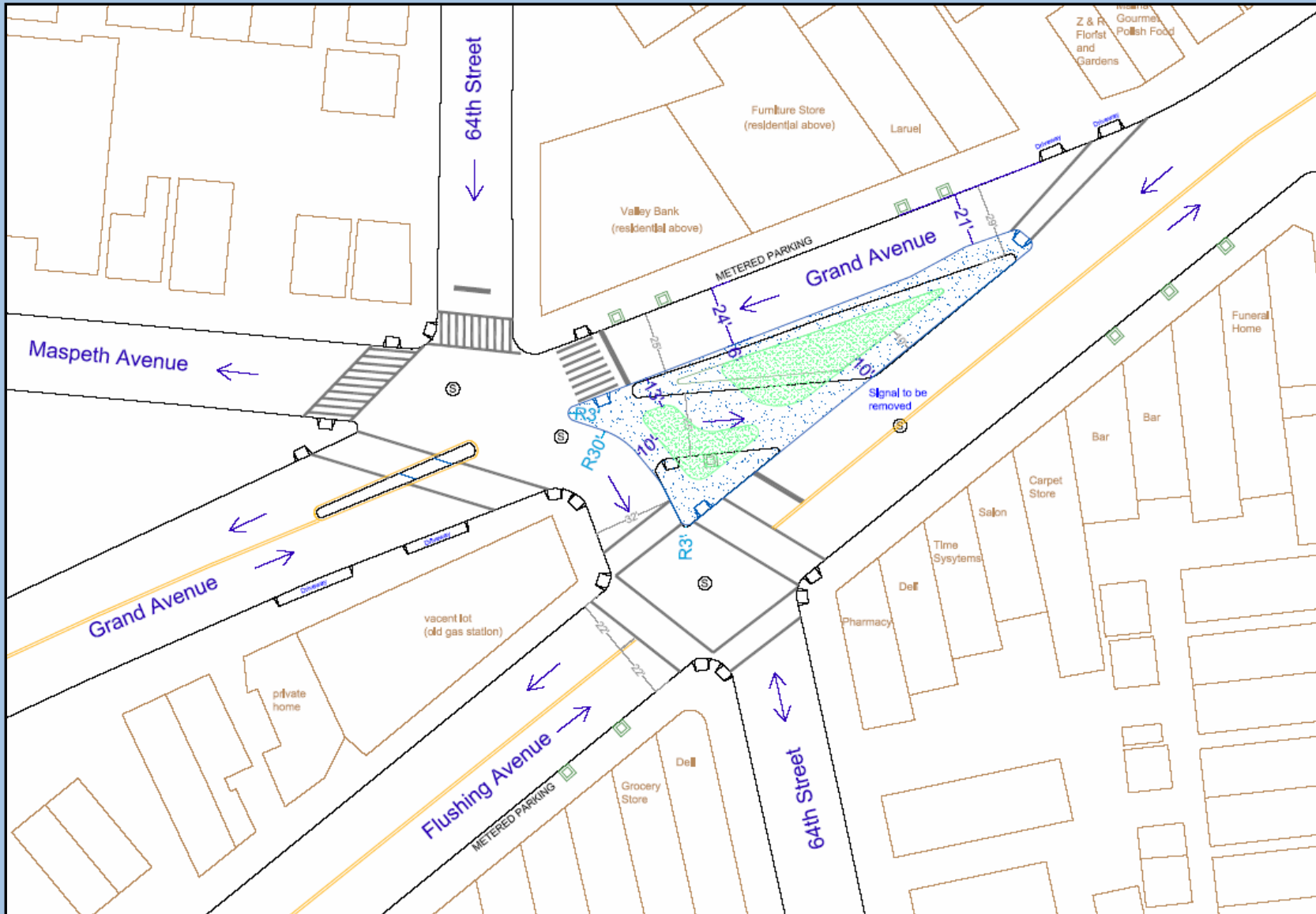




# Proposed changes



# Draft Plan





# Community

- Bus Routes will be coordinated and maintained
- All Signals will be coordinated
- Parks Department (Greenstreets) will plant and maintain
- Chamber of Commerce Signs will be preserved



**Timeline:**  
Construction  
would take approx  
4-6 weeks during  
summer





**Existing View**





# Artist Rendering





**Existing View**





# Artist Rendering