

School Safety Project **at The Learning Tree School**

**Landscaped Refuge Islands on Northern Boulevard @
103rd and 104th Streets**



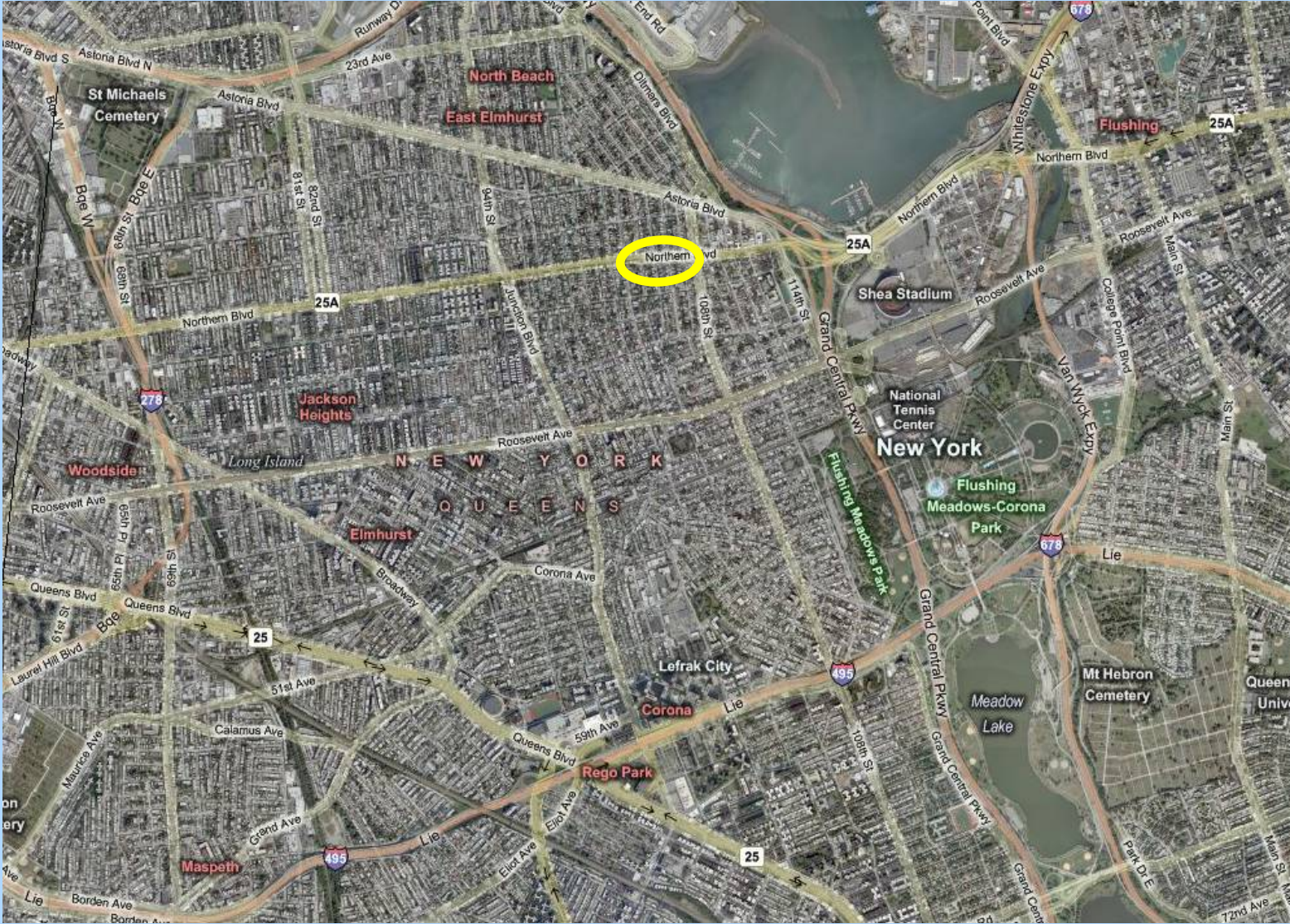
Presentation to Transportation Committee

Queens Community Board 3

May 29th, 2008



Project Location



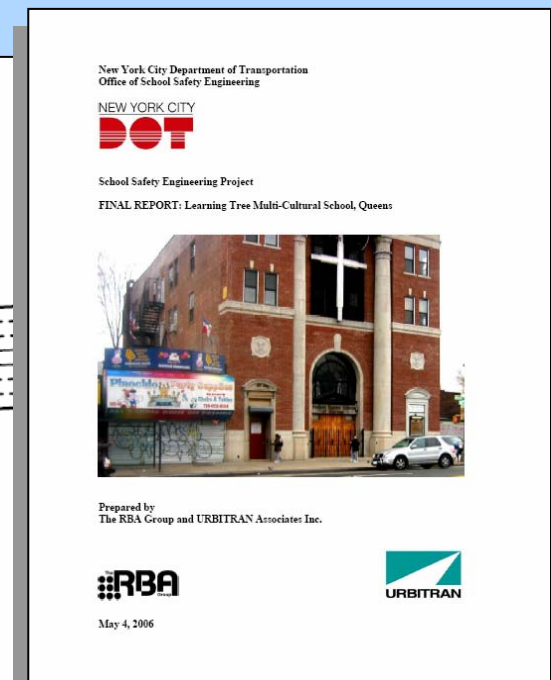
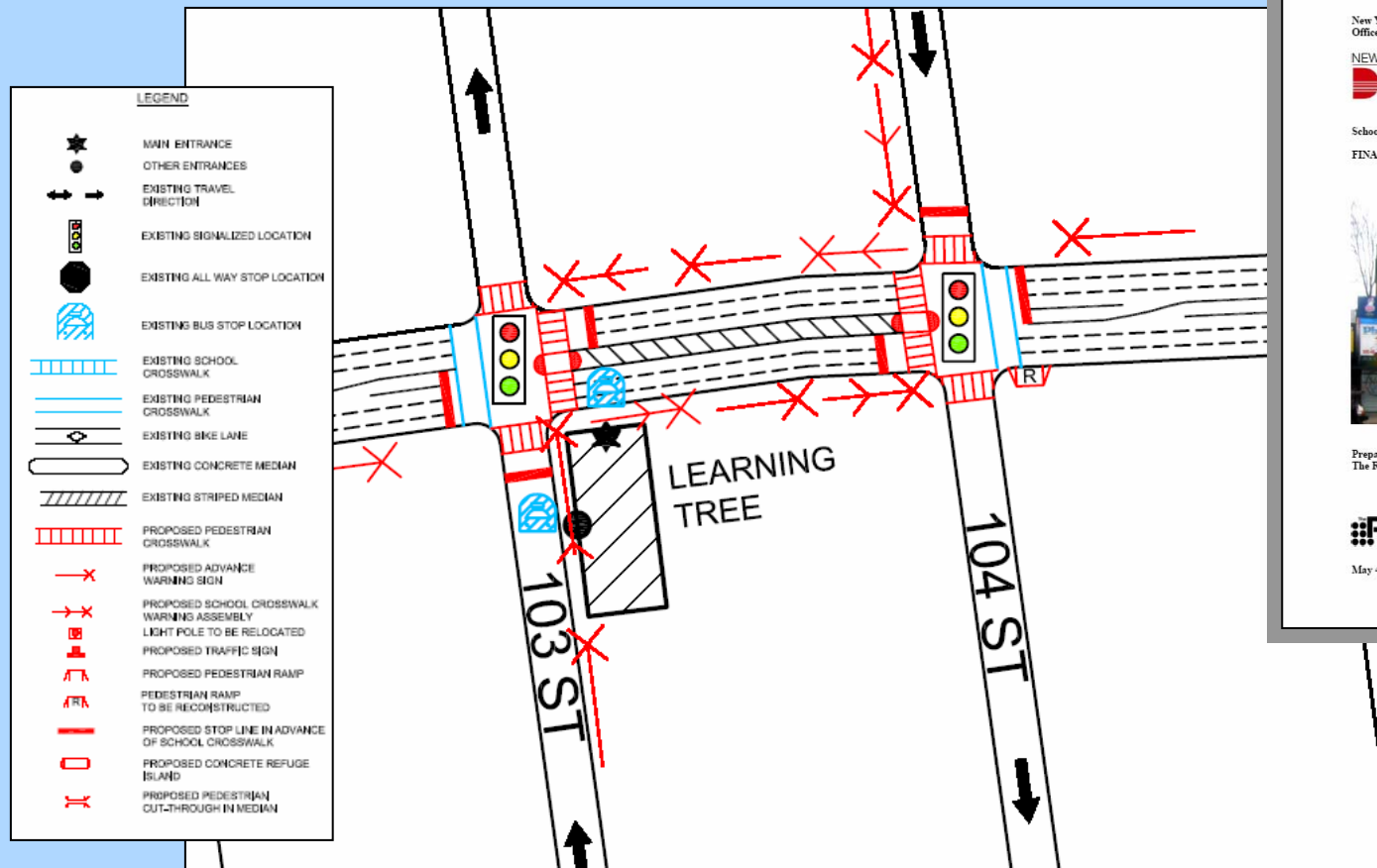
Project Location

- The Corona/East Elmhurst neighborhoods make up this vibrant commercial and residential corridor that generate lots of pedestrian crossings
- Northern Boulevard is a high volume roadway and a truck route
- The Langston Hughes Library and Cultural Center are located directly across the street from the Learning Tree School



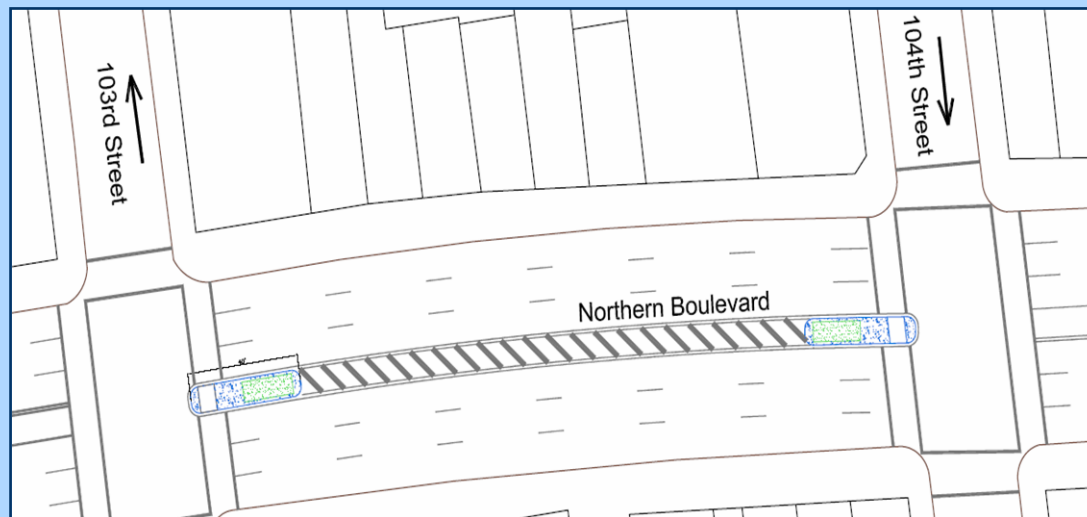
Background

- The Learning Tree is one of DOT's 135 "priority schools"
- Refuge islands on Northern Boulevard were a key recommended safety measure at this school
- School officials indicated concern for students crossing Northern Blvd.
- Landscaping and Street Trees are part of PlaNYC goal to plant a million new trees.



Landscaped Refuge Islands - Benefits

- Refuge islands provide a protected space for those who can't make it across in one signal phase
- Refuge islands help enforce turning vehicles to yield to pedestrians who are crossing
- Pedestrian safety at heavily utilized school intersections on Northern Blvd
- Street trees help calm traffic on this heavily traveled roadway and increase the visibility of the island to motorists



Landscaped Refuge Islands

- Islands will be constructed in the existing painted center median
- Parks Department will maintain landscaping and street trees.
- Construction of median islands is expected to take approx 4 weeks to complete



Examples of newly Completed Refuge Islands

Grand Street, Manhattan

