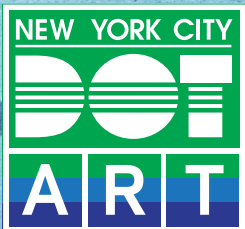


# Site Selection Guide

Eligible Transportation Infrastructure for Public Art



Chenlin Cai  
*The Beauty of Four Life Essentials*  
衣食住行之美





Sophia Dawson  
Standing in the Gap

# Introduction

New York City Department of Transportation Art (NYC DOT Art) partners with community-based, nonprofit organizations and professional artists to present temporary public artwork on eligible NYC DOT infrastructure throughout the five boroughs. Asphalt, bridges, fences, jersey barriers, medians, plazas, sidewalks, step streets, streetlight poles, and triangles serve as canvases and foundations for temporary murals, projections, sculptures, and interventions.

This guide defines each site type eligible for public art installations and provides relevant site-specific information such as:

- typical elements found at a site;
- technical requirements and recommendations;
- content considerations; and
- potential artwork installations associated with each site type.

Organizations and artists are invited to select eligible NYC DOT-owned infrastructure within their communities as potential sites for temporary art. Appropriate sites for art are evaluated based on the following criteria:

## Size and Safety

The site is large enough to accommodate artwork, and the addition of artwork will not impede pedestrian circulation or introduce any public safety hazards.

## Visibility and Accessibility

The site is accessible to a diverse audience, in close proximity to public transportation, and adjacent to a mixed used corridor.

## Site Enhancement and Significance

The site is historically or geographically relevant to the community.

The streets of New York are ever-changing and so too is the public art landscape. NYC DOT does not maintain a list of exact sites eligible for public artwork. NYC DOT Art hopes to inspire organizations and artists to uncover unique sites within their communities in New York City and beyond. For more information on past NYC DOT Art installations and their locations visit our Flickr: [flickr.com/nycstreets](https://www.flickr.com/photos/nycstreets/). Installations are not limited to only previously activated sites. However, new sites will require a more extensive review before they can be approved for activation.

NYC DOT developed a holistic, data-driven framework to guide placement of infrastructure on city sidewalks which considers pedestrian volume and needs. The NYC Pedestrian Mobility Plan includes design guidelines to inform art placement on sidewalks according to their corridor classification. For more information, visit: [nyc.gov/PedestrianMobility](https://www.nyc.gov/PedestrianMobility).

# Asphalt Pedestrian Space

Asphalt pedestrian spaces are street segments reclaimed to improve pedestrian safety and increase accessibility (e.g., larger curb extensions and slip lane closures).

## Typical Elements

- Planters
- Granite blocks
- Flexible delineators
- Citi Bike stations

## Technical Requirements + Recommendations

- Murals may only be painted on fully pedestrianized asphalt surfaces closed to vehicular traffic and designated for 24/7 pedestrian use.
- Sites in close proximity to business districts, schools, community centers, parks, art institutions, or other commercial corridors are recommended.
- Appropriate asphalt pedestrian spaces for art should be a minimum of 1,000 square feet.
- Installation method must allow for safe pedestrian flow within spaces during implementation.
- Asphalt spaces that have recently received colored surface treatments by NYC DOT are not recommended.
- Paint must be exterior-grade and water-based. All proposed paint materials are subject to NYC DOT approval.

## Content Considerations

- Designs should consist of a bold, colorful, abstract or geometric pattern, or representational composition.
- Any proposed text incorporated into the design is subject to extensive review; we do not guarantee approval. Text may only make up 10% of the design.
- Designs that include commercial advertising, branding, or trademarked imagery are not permitted.

## Potential Installations

- Asphalt Art



1



2

1 Singha Hon  
*Aurora Dragon*

2 BOICUT  
*1Fluss*



# Bridge: Concrete Wall

A bridge allows pedestrians, bicycles, and vehicles to cross over or under water, railway tracks, greenways, or highways. Concrete walls enclosing the bridge adjacent to sidewalks may be utilized for art.

## Typical Elements

- Signs

## Technical Requirements + Recommendations

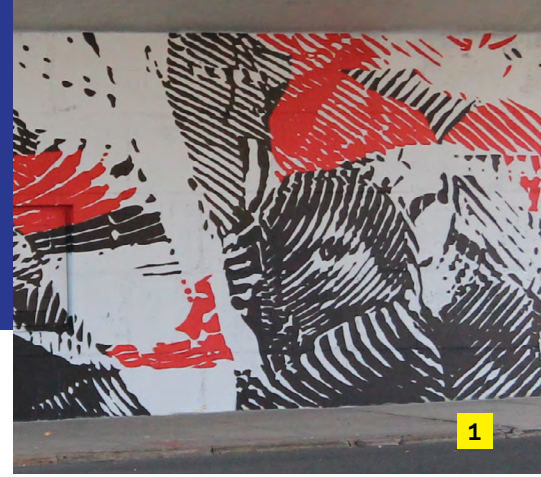
- The bridge structure cannot be permanently altered; therefore, a temporary solution must be proposed for review by the agency.
- Art cannot interfere with pedestrian traffic on the sidewalk or walkway.
- Murals may only be painted on concrete wall segments; stone walls are not eligible.
- Murals may not be painted on chain link fences.
- Pending approval, mural panels may be installed instead using standard brackets or clamps.
- Paint must be exterior-grade and water-based. All proposed paint materials are subject to NYC DOT approval.

## Content Considerations

- Designs should consist of a bold, colorful, abstract or geometric pattern, or representational composition.
- Any proposed text is subject to extensive review; we do not guarantee approval. Text may only make up 10% of the design.
- Designs that include commercial advertising, branding, or trademarked imagery are not permitted.

## Potential Installations

- Murals



- 1** Andrew Antonaccio and Fillio Galvez (2Alas) *South Bronx Timeline*
- 2** Patrick Griffin (VIZIE) *The Night Life, Baby*
- 3** Groundswell *Groundswell Community Mural*

# Bridge: Anchorage + Archway

A bridge anchorage is composed of the two outer sides of a bridge that are grounded on land, providing support for the structure as it spans across a body of water, a roadway, a railroad, etc.

## Typical Elements

- Corrugated metal fence or chain-link fence
- Signs
- Gates
- Stonework

## Technical Requirements + Recommendations

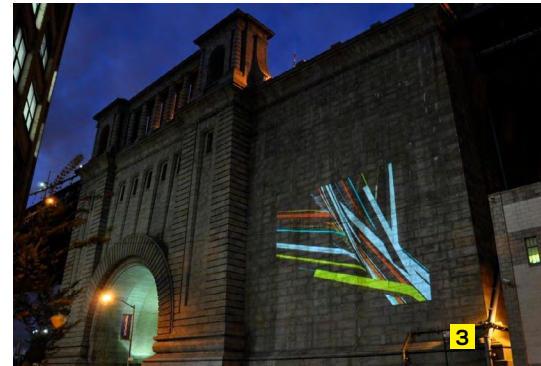
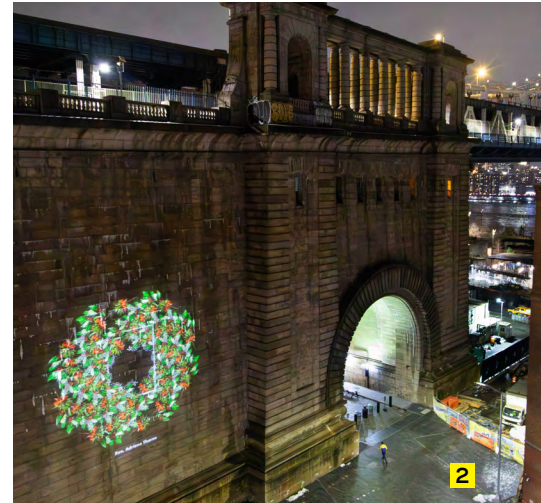
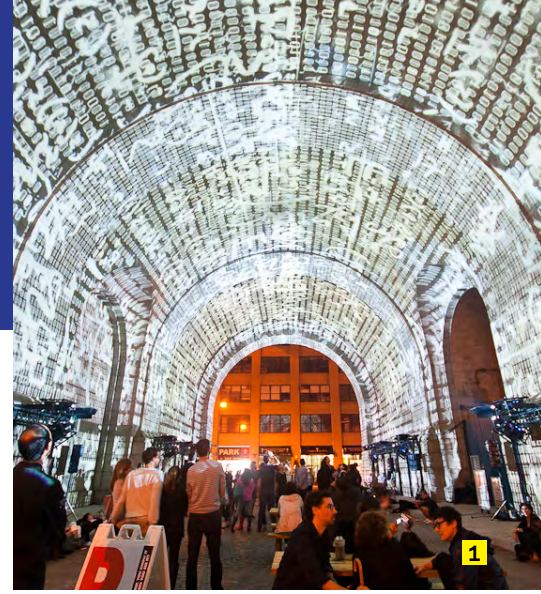
- The bridge structure cannot be altered; therefore, artwork may only be projected onto the surface of the bridge.
- The anchorages and archways, any doors or gates, utility points, conduits, emergency fire valves, and standpipe systems of the bridge cannot be blocked by equipment used to project art.
- Projector equipment must be set-up on private property.
- The anchorages' security system cannot be interfered with by the art projections.
- Projection must have adequate distance from the roadway to not to cause distractions to vehicular traffic.

## Content Considerations

- The work must be appropriate for all ages and be suitable for public space.
- Any proposed text is subject to extensive review; we do not guarantee approval. Text may only make up 10% of the design.
- Designs that include commercial advertising, branding, or trademarked imagery are not permitted.

## Potential Installations

- Art projections only. Art cannot be painted or attached to bridge anchorages or archways.



**1** Two Tree Management Company  
*Bridge Anchorage & Archway*  
(Photo by Jane Kratochvil)

**2** Josh Miller and Angela Fraleigh  
*Sound The Deep Waters*  
(Photo by Noemie Trusty)

**3** Burak Arikan, Motomichi Nakamura,  
Marius Watz, and Lee Wells  
*Bright Nights*



# Concrete Jersey Barrier

Concrete jersey barriers are safety divides placed along bike lanes or pedestrian walkways to separate and protect cyclists and pedestrians from vehicular traffic. The dimensions of each barrier are approximately twenty feet in length by three feet in height.

## Typical Elements

- Metal fence attachment
- Drainage holes
- Metal hardware

## Technical Requirements + Recommendations

- Designs may only be painted on jersey barrier surfaces facing cyclist or pedestrian pathways.
- The bike lane or pedestrian walkway must be temporarily reduced during design implementation using an approved safety set-up.
- Metal safety elements secured to the top of jersey barriers may not be painted or altered in any way.
- Jersey barriers installed as part of private construction projects are ineligible.
- Paint must be exterior-grade and water-based. All proposed paint materials are subject to NYC DOT approval.

## Content Considerations

- Designs should consist of a bold, colorful, abstract or geometric pattern, or representational composition.
- Any proposed text incorporated into the design will have to go through extensive review; we do not guarantee approval. Text may only make up 10% of the imagery.
- Designs that include commercial advertising, branding, or trademarked imagery are not permitted.
- Repeated designs using stencils are recommended.

## Potential Installations

- Murals



- 1 Cat Willett  
*Strong/Soft as a Cliff Rose*
- 2 Isolina Minjeong  
*Lucky Passage*
- 3 Saint-Cyr Art  
*Barrier Beautification*
- 4 Jessie Contour  
*Jazz City*

# Fence

A fence is a barrier that encloses an area and restricts movement in and out of a NYC DOT-owned space. Corrugated metal, chain-link, or EL fences enclose these spaces.

## Typical Elements

- Corrugated metal fence or chain-link fence
- Signs
- Gates

## Technical Requirements + Recommendations

- Gates or other egress points on a fence must not be blocked by art.
- Fences must be able to support the weight of an installation, to be determined by structural engineer.
- Art must be bolted or mounted to the fence structure. Art can only be painted directly onto the surface of certain fence types.
- The corrugated metal panels of EL fences are eligible for paint. Learn about EL fences at [nyc.gov/elspace](https://nyc.gov/elspace).
- Paint must be exterior-grade and water-based. All proposed paint materials are subject to NYC DOT approval.
- NYC DOT does not allow electrical illumination to fences or bridges.

## Content Considerations

- Designs should consist of a bold, colorful, abstract, or geometric pattern, or representational composition.
- Any proposed text is subject to extensive review; we do not guarantee approval. Text may only make up 10% of the design.
- Designs that include commercial advertising, branding, or trademarked imagery are not permitted.

## Potential Installations

- Murals
- Vinyl Banners
- Design Interventions (e.g., yarn, zip ties, etc.)
- Art Panels on plywood or metal



- 1** Magda Sayeg  
*Plan Ahead*
- 2** Deanna Lee  
*To follow the Way is to cherish nature—道在于珍惜自然—  
To follow the Way is to cherish life—  
道在于珍惜生命*
- 3** Vaimoana Niumeitolu  
*Newkirk Cultural Bridge*
- 4** Crystal Gregory  
*Foot Traffic*



# Plazas

NYC DOT plazas are vibrant, social public spaces created by reclaiming and redesigning underutilized street segments as places for pedestrian and cyclist use. NYC DOT partners with community groups to operate, maintain, and manage these spaces. For more information on the NYC Plaza Program, visit [nyc.gov/plazas](https://nyc.gov/plazas).

## Typical Elements

- Street furniture (e.g., benches, tables, planters)
- Lighting
- Drinking fountains
- Litter receptacles
- Utilities
- Landscaping
- Bike racks
- Wayfinding

## Technical Requirements + Recommendations

- Plazas with permanent art or large fountains are subject to a more extensive review for temporary art.
- NYC DOT will work with partners and artists to ensure that pedestrian circulation paths and emergency lanes are adequately maintained.
- Murals are not permitted on concrete.
- Organizations and artists must partner with the plaza maintenance partner to install art.
- Paint must be exterior-grade and water-based. All proposed paint materials are subject to NYC DOT approval.
- Sculptural artwork must be secured either by bolting to the concrete or by a weighted base. All three-dimensional artworks require a signed, sealed technical report by a NYS licensed engineer to ensure their stability.
- Electrical connections must be approved by NYC DOT and be installed by a licensed NYC electrician. Electrical connections must use private or metered power.

## Content Considerations

- Designs should consist of a bold, colorful, abstract, or geometric pattern, or representational composition.
- Any proposed text is subject to extensive review; we do not guarantee approval. Text may only make up 10% of the design.
- Designs that include commercial advertising, branding, or trademarked imagery are not permitted.

## Potential Installations

- Sculpture/Three-Dimensional
- Art Display Cases
- Asphalt Art
- Electrified Artwork



- 1** Mathias Gmachl  
*Echoes—A Voice From Uncharted Waters*
- 2** Gabriela Salazar  
*For Closure*
- 3** Shenna Vaughn and William Bentley  
*The Butterfly Mural*



# Sidewalks

Sidewalks are paved, concrete paths designed primarily for pedestrian use, which are located between the roadside curb and adjacent property lines. In addition to standard sidewalks, sites can include curb extensions and pedestrianized spaces.

## Typical Elements

- Street furniture (e.g., benches, tables, planters)
- Litter receptacles
- Bike racks
- Bike shelters
- Bus shelters
- Signs & sign posts
- Lighting
- Wayfinding

## Technical Requirements + Recommendations

- A sidewalk must be a minimum of 20 feet in width from the building line to the curb line to be considered for a sculpture.
- Wide, well-maintained sidewalks with a limited number of elements are appropriate sites for artwork.
- A sculpture must be installed at a minimum of 18 inches from the curb.
- The sidewalk clear path required to accommodate artwork is determined by the NYC DOT Pedestrian Mobility Plan in accordance with the corridor designation at the proposed installation site varying from four to fifteen feet of clearance.
- Painted murals are not permitted on sidewalks.
- Sculptural artwork must be secured either by bolting to the concrete or by a weighted base. All three-dimensional artworks require a signed, sealed technical report by a NYS licensed engineer to ensure their stability.
- Electrical connections must be approved by NYC DOT and be installed by a licensed NYC electrician. Electrical connections must use private or metered power.
- Art placement must follow the NYC Pedestrian Mobility Plan according to the location's corridor classification to ensure pedestrian clearance. For more information, visit: [nyc.gov/PedestrianMobility](https://nyc.gov/PedestrianMobility).

## Potential Installations

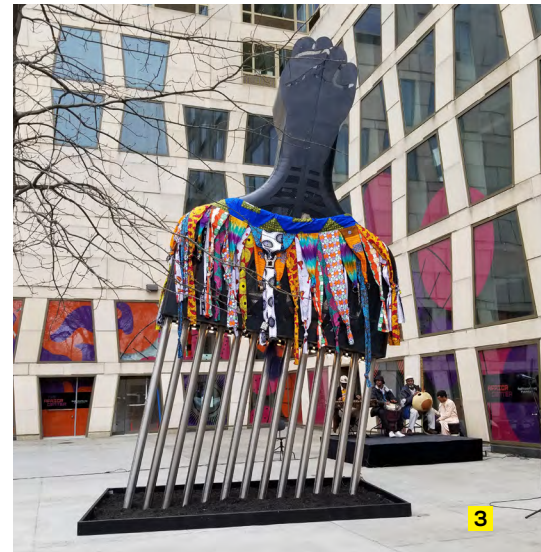
- Sculpture/Three-Dimensional
- Art Display Cases



1



2



3

- 1 Kathryn Hall  
*Aberrant Sidewalk*
- 2 Anthony Heinz May  
*Common Denominator*
- 3 Hank Willis Thomas  
*All Power to All People*



# Step Street

A step street is a large concrete pedestrian staircase that rests on a hill connecting two streets.

## Typical Elements

- Landings
- Metal railings

## Technical Requirements + Recommendations

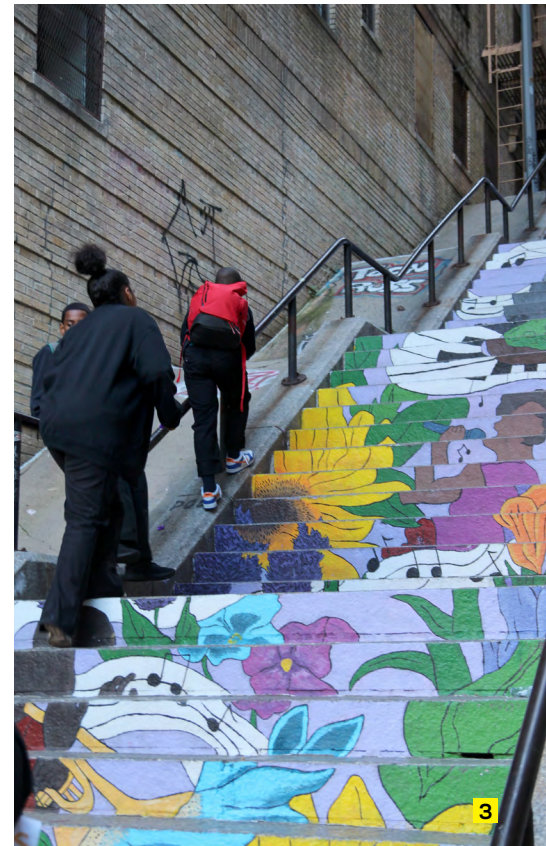
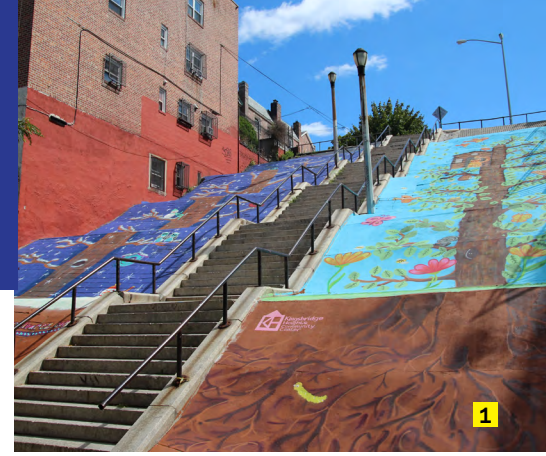
- Art cannot interfere with pedestrian traffic on the sidewalk or walkway.
- Murals may only be painted on the concrete walls or front of steps.
- Murals may not be painted on metal railings unless approved by the agency.
- Paint must be exterior-grade and water-based. All proposed paint materials are subject to agency approval.

## Content Considerations

- Designs should consist of a bold, colorful, abstract, or geometric pattern, or representational composition.
- Any proposed text is subject to extensive review; we do not guarantee approval. Text may only make up 10% of the design.
- Designs that include commercial advertising, branding, or trademarked imagery are not permitted.

## Potential Installations

- Murals



- 1** Laura Alvarez  
*KHCC Grows*
- 2** Lady K Fever (Kathleena Howie)  
*Dubbed in Flight*
- 3** Yorknam Lam, Chloe Huang, and Natalie Caro  
*Beautifying the Shakespeare Stairs*



# Streetlight Pole

Streetlights provide light for pedestrians and vehicles on bridges, walkways, bikeways, and plazas. The poles are located adjacent to the curb. NYC DOT maintains over 315,000 streetlights throughout the city.

## Typical Elements

- Twenty-eight to thirty foot standard pole
- Signs shall be twelve inches high by eight inches wide.
- Standard streetlight poles include: 1) base 2) pole 3) lamp 4) fixture
- Standard street signs

## Technical Requirements + Recommendations

- Only midblock streetlight poles shall be considered for art installations. Art cannot be installed on traffic signal poles at intersections.
- Only standard stainless-steel bandings shall be used for installation.
- Art cannot interfere with access to electrical connections, streetlight maintenance and traffic safety signs. Installation method cannot alter the surface of the streetlight pole.
- Art larger than the eight inch width of the pole must be installed at seven feet above the sidewalk due to public safety concerns. Art dimensions eight inches or smaller may be reviewed for approval at lower height.
- Art installations attached to streetlight poles will require a structural analysis. This will be requested after application is received and reviewed.
- Type B poles are not eligible for design interventions or signs. For more information on various streetlight poles visit the Street Design Manual at [nyc.gov/StreetDesignManual](http://nyc.gov/StreetDesignManual).
- Using NYC DOT streetlight poles as a power source is discouraged. Consider using solar power or private, metered power instead.
- Art requiring an electrical connection must be reviewed by NYC DOT and installed by a NYS licensed electrician.

## Potential Installations

- Signs
- Design interventions (e.g., yarn, zip ties, etc.)



- 1** Lyubava Kroll  
*Keep NYC Green*
- 2** Various artists with Ifeoma Ebo  
(lead artist)  
*Black History + Heritage Corridor*
- 3** Claudia Ravaschiere and Michael Moss  
*Street Cathedral*



# Triangles + Medians

Triangles and medians are raised divides separating traffic lanes, roadway directions, or roadbeds within a street. Triangles and medians vary in size.

## Typical Elements

- Benches
- Litter receptacles
- Landscaping
- Street lighting
- Road signs
- Bike racks

## Technical Requirements + Recommendations

- An unobstructed path with a width of at least eight feet between the art and the curb line must be maintained at all times if median is intended for pedestrian use.
- Triangles and medians that are easily and safely accessible and/or visible to the public are appropriate for artwork.
- Triangles and medians owned by NYC DOT but maintained by the NYC Department of Parks and Recreation (Greenstreets) are not eligible through NYC DOT Art.

## Potential Installations

- Sculpture/Three-Dimensional



1



2



3

- 1 Jorge Luis Rodriguez  
*Birdhouse*
- 2 Adam Parker Smith  
*Ganymede with Jupiter's Eagle*
- 3 Chat Travieso and Sam Holleran  
*We Call This Place Home*