

# N.12 St & Union Ave

## Pedestrian Safety Improvements

2011  
or 2012  
Project





# Existing Conditions

Williamsburg,  
Brooklyn

Parks to be connected  
as separate future  
Parks Dept. project

McCarren Park

North 12<sup>th</sup> Street

Union Avenue





# Existing Conditions



Natural  
Pedestrian  
Path

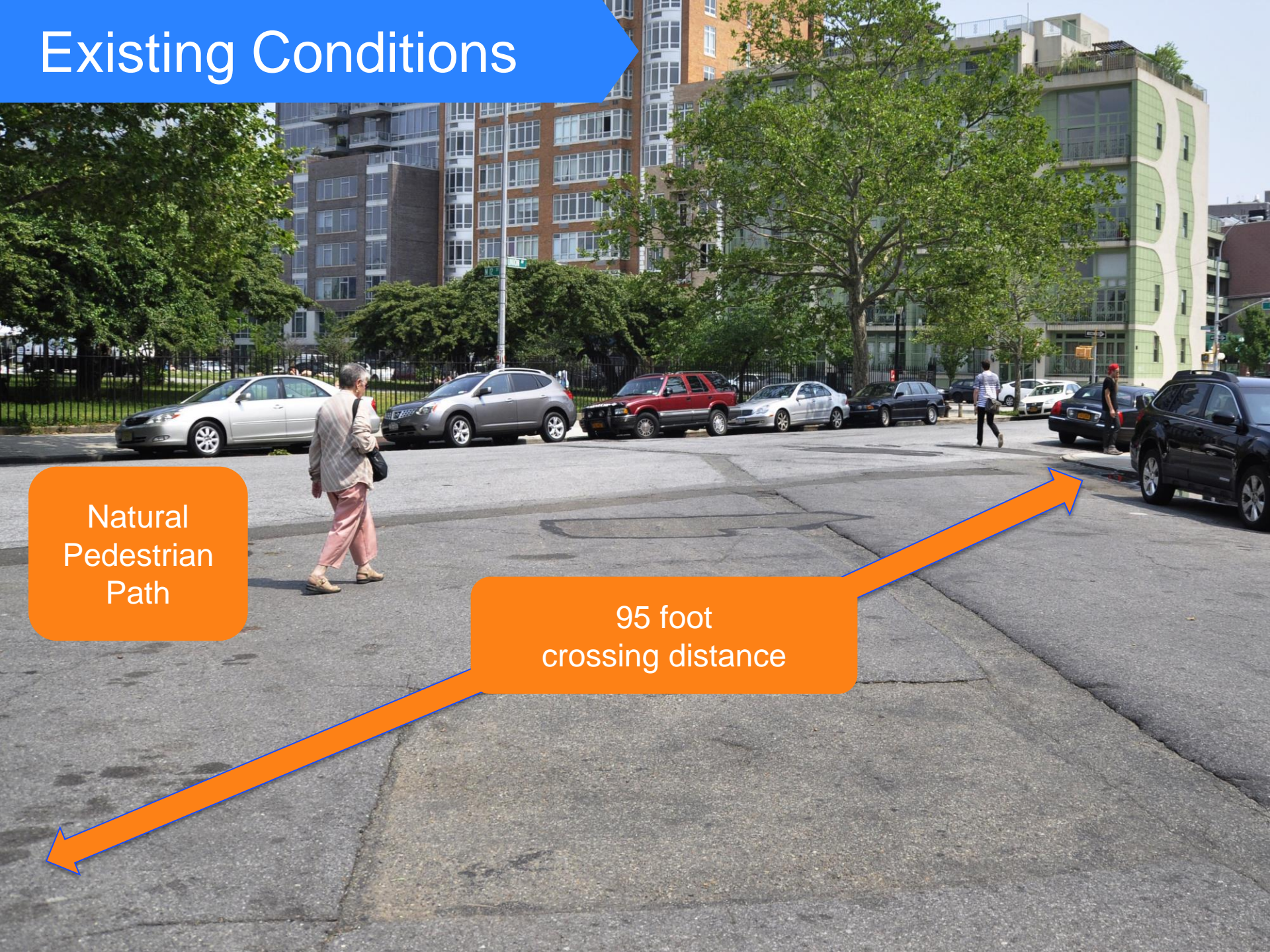
Limited Visibility



# Existing Conditions

Natural  
Pedestrian  
Path

95 foot  
crossing distance





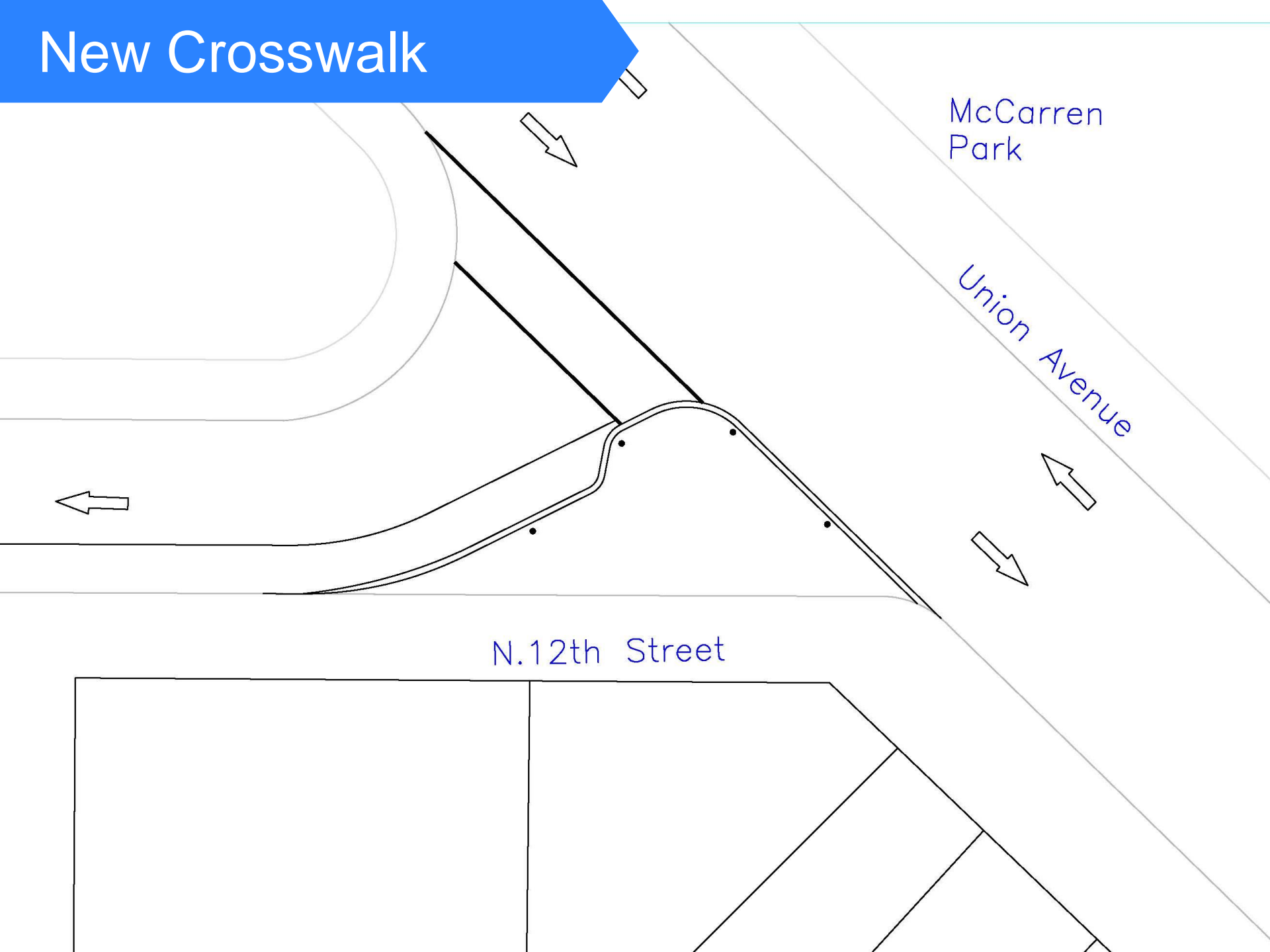
# Existing Conditions



Changing retail  
character

Extremely wide turning  
radius promotes speeding

# New Crosswalk





# Proposal

New Crosswalk

Divert all traffic right until Park's connection eliminates movement

McCarren Park

Slows turning traffic

Union Avenue

N.12th Street

New Pedestrian area adjacent to retail businesses



# Rendering





[nyc.gov/dot](https://nyc.gov/dot)

Thank  
You