

STATEN ISLAND TRANSPORTATION TASK FORCE

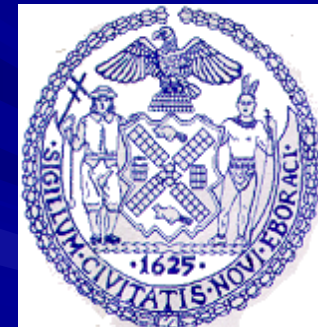
Update Presentation

February 26, 2008

Michael R. Bloomberg, Mayor

Janette Sadik-Khan, Commissioner,
New York City Department of Transportation

Amanda M. Burden, Director,
New York City Department of City Planning

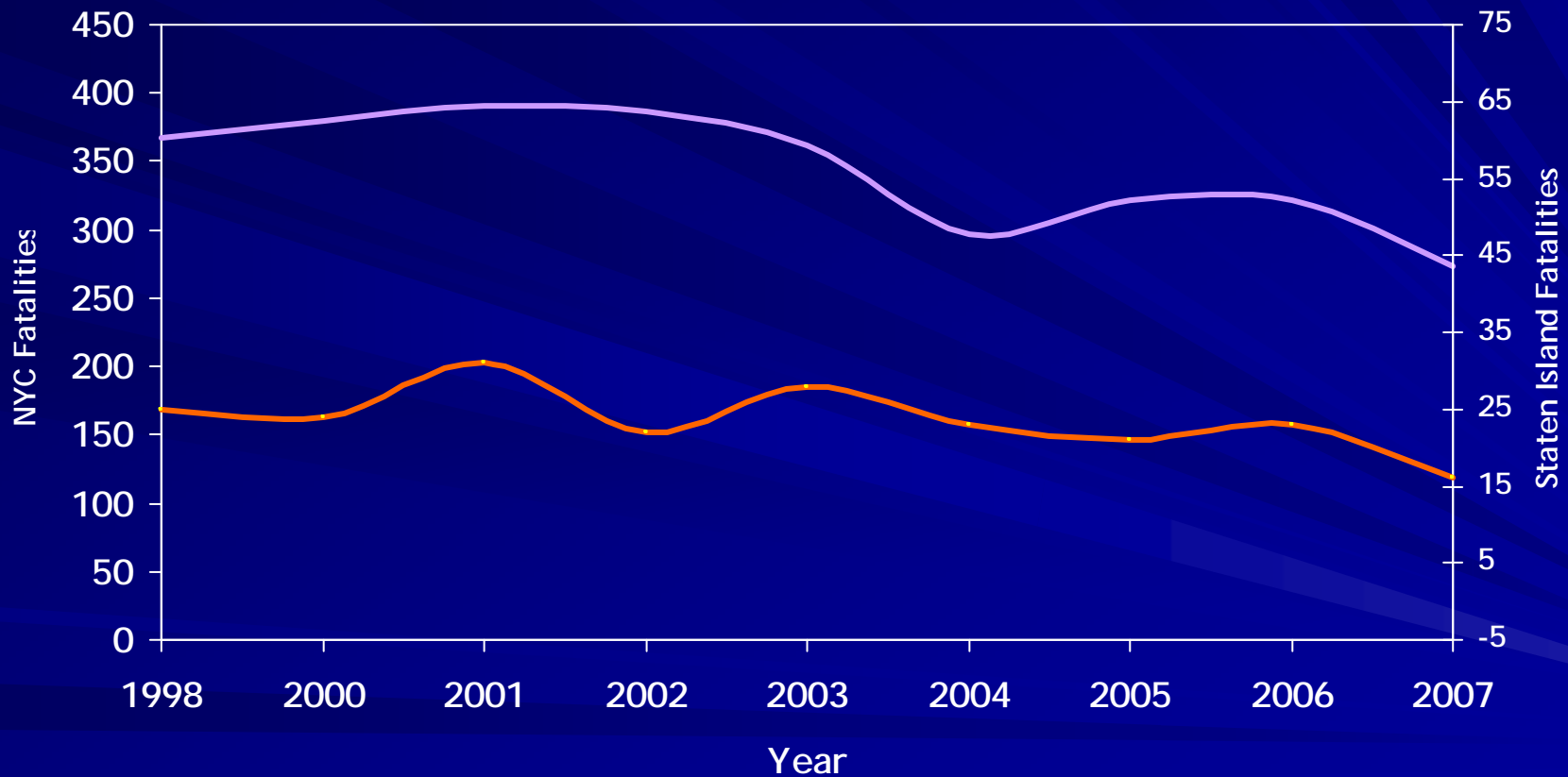


SHORT TERM INITIATIVES

- SAFETY
- ONE-WAY CONVERSIONS
- RIGHT-TURN ON RED
- AMBOY ROAD
- TAKE BACK THE STREETS
- VERRAZANO NARROWS BRIDGE
- SIGNAL PRIORITIZATION
- S89 ENHANCEMENTS
- EXPRESS BUS ENHANCEMENTS
- STATEN ISLAND RAILWAY IMPROVEMENTS
- FREIGHT RAIL CONNECTION

SAFETY

Traffic Fatality Trends: 1998-2007



— NYC — STATEN ISLAND

ONE-WAY CONVERSIONS

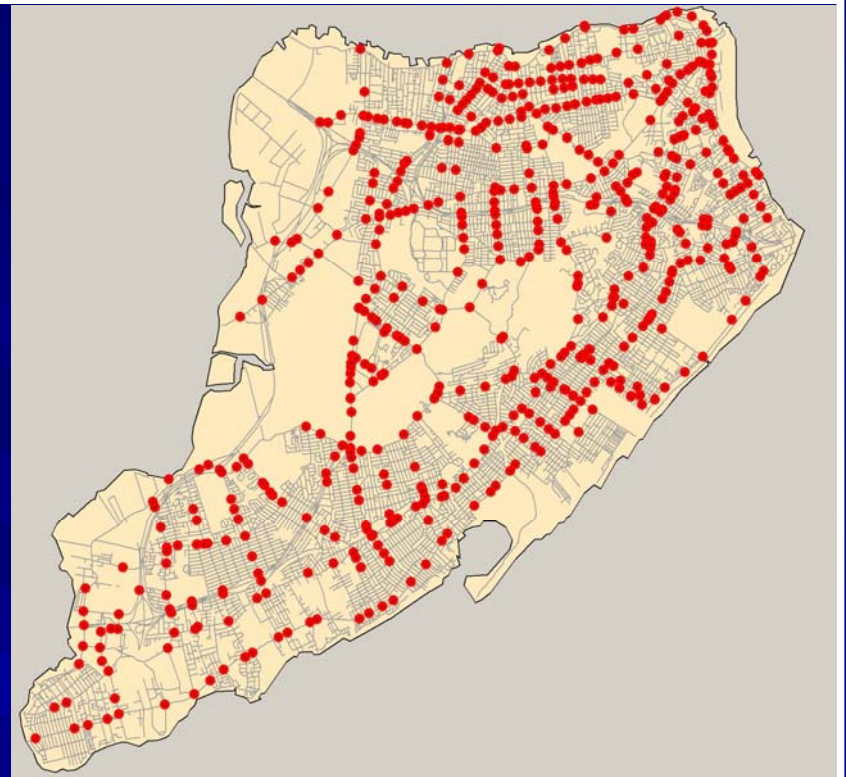
23 1-way conversions completed during the last 5 months

Bryson Ave	Nugent Ave
No Mada Ave	Grimsby St
Walbrooke Ave	Seaver Ave
Randall Ave	Freeborn Ave
Ridgewood Pl	Olympia Blvd
Buel Ave	Colony St
Appleby Ave	Baden Ave
Britton Ave	Patterson Ave
Elizabeth Ave	University Pl
Howard Ct	Androvette Ave
Moreland St	Prall Ave
Kiswick St	

RIGHT TURN ON RED

RIGHT TURN ON RED STUDY

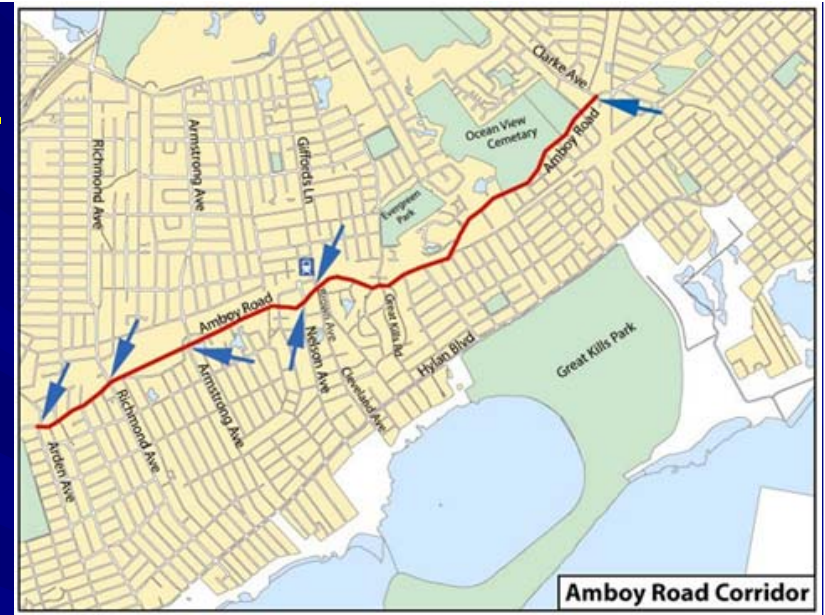
- Study complete
- Investigated 501 signalized intersections on Staten Island
- 40 additional approaches initially identified for right-turn on red opportunities
- Increased enforcement of compliance



AMBOY ROAD

CONGESTED CORRIDOR STUDY

- Arden Avenue to Clarke Avenue
- A public meeting was held February 11
- Data has been collected and analyzed
- A draft report will be completed in the summer and the final report at the end of the calendar year.
- Left turn studies will be completed in March/April



TAKE BACK THE STREETS

INCREASED MONITORING

- Staffing Increased from 8 to 12
- Wireless tablets now being used by inspectors
- Repairs Completed by Contractors: 89
- Repairs Completed by Contractors after DOT Core Inspection: 25



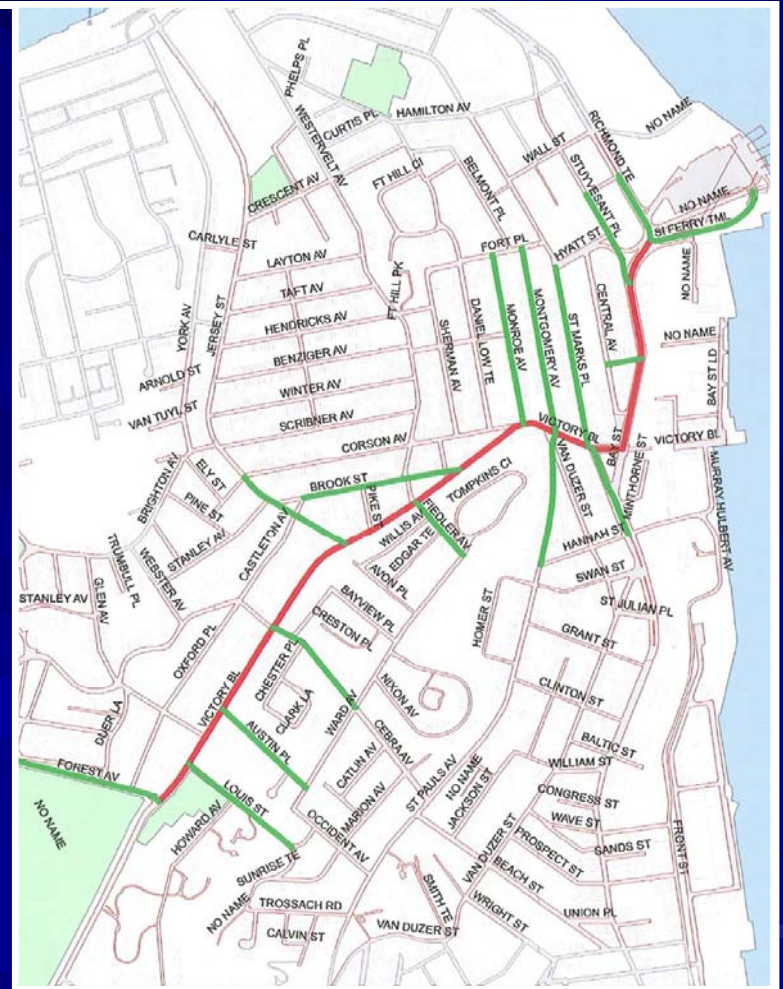
INCREASED ENFORCEMENT

- Calendar Year 2006: 1238 summonses issued
- Calendar Year 2007: 1459 summonses issued
- Percent Change: +18%

SIGNAL PRIORITIZATION

VICTORY BOULEVARD

- Testing of the TSP system on 300 buses is complete
- Travel times for buses improved by 15%-20% with TSP and signal optimization
- Vehicle delays reduced
- A template for future improvements across the City



S89 STATEN ISLAND-BAYONNE LIMITED-STOP SERVICE

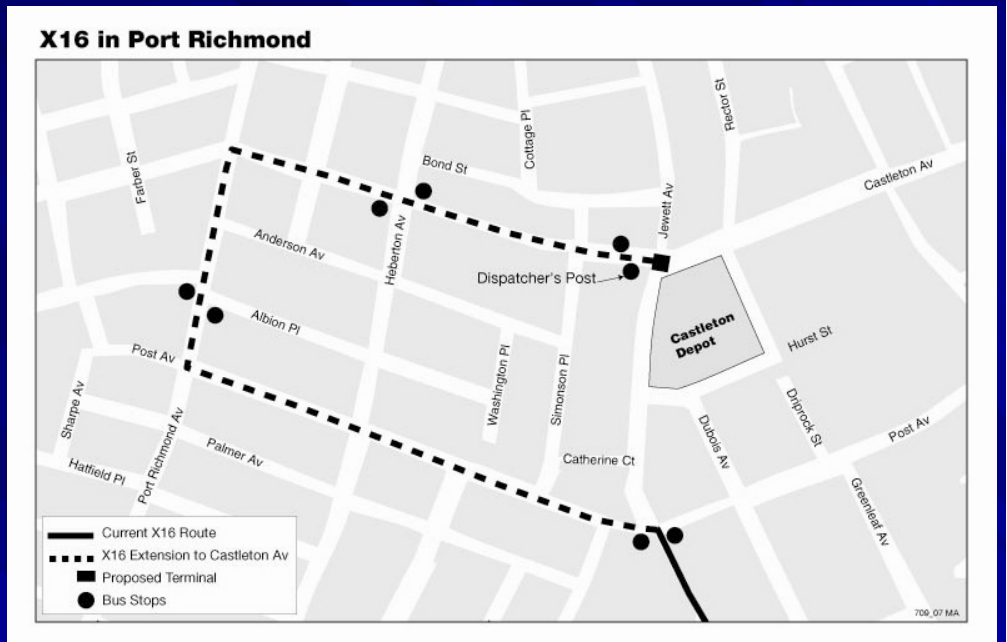
- S89 ridership is approximately 800 customers per day, almost double the initial ridership in September 2007
- Joint NYCT/NJT fare tickets with Unlimited Ride MetroCard & HBLR flash pass
- April 2008: Three S89 trips will be added.
 - A new northbound AM peak trip
 - An additional northbound AM peak trip
 - An additional southbound PM peak trip



EXPRESS BUS RELIABILITY ENHANCEMENTS

X16 SERVICE EXTENDED TO CASTLETON AVENUE

- Improve reliability
- Improved travel options for Port Richmond customers destined for Lower Manhattan



PM EXPRESS BUS RECOVERY TIME

- Widespread PM schedule adjustments made to improve reliability
- Improved PM on-time performance

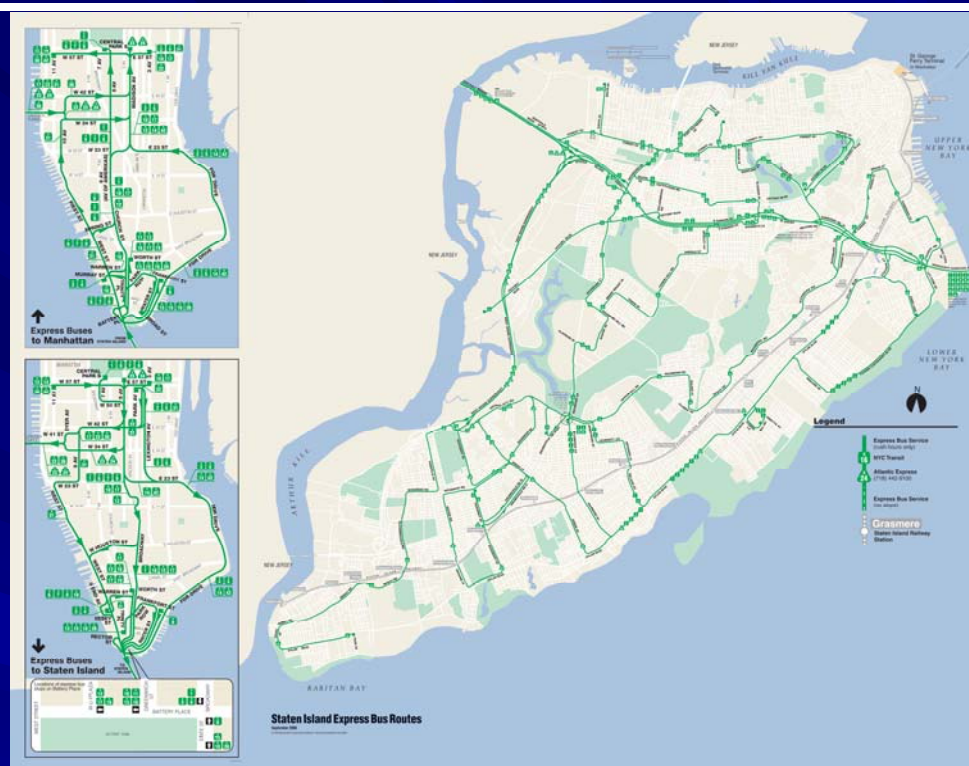
FUTURE STATEN ISLAND BUS SERVICE IMPROVEMENTS

EXPRESS BUSES

- System-wide study underway
- Recommendations to include:
 - New days and time periods of service
 - More early and late bus trips
 - Route extensions
- Recommendations in Spring 2008

LOCAL BUSES

- Comprehensive study beginning in 2008



STATEN ISLAND RAILWAY

- Ridership increased by 9% in 2007 over 2006, complementing 9% increase from 2005.
- In December 2007, SIR expanded morning rush hour service by 45 minutes, with three additional express trains to St George and five new express trains to Tottenville.
- 5-car trains operated to meet busiest morning ferries

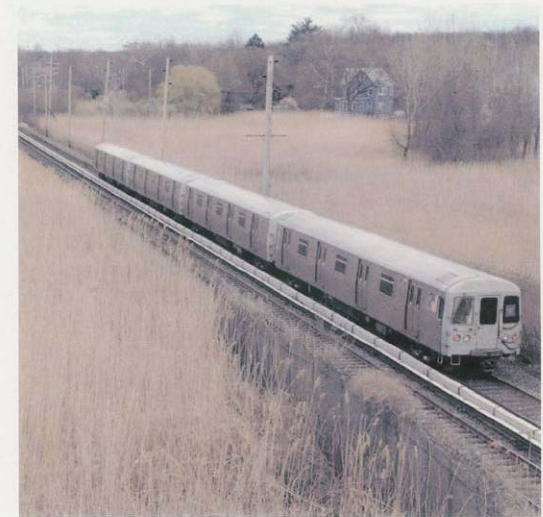
We have new rush hour service. With the emphasis on the “rush.”

Presenting faster rush hour service. All morning Staten Island Railway express trains now run non-stop from New Dorp to St. George Ferry Terminal. And there's also earlier evening express service available. Look for our new and improved timetable in today's newspaper.

Taking the Staten Island Railway to the Staten Island Ferry is now more convenient, saving you time and money. One-fare rides from the railway, to the ferry, to the subway are only \$2 one-way – or less with MetroCard discounts. And SIR offers fast, reliable service from local stations to St. George Ferry Terminal.

Easy to read train and ferry schedules are available at every station stop. For complete schedule and fare information, visit www.mta.info.

And again, please look for the new timetable.



 **Staten Island Railway** Going your way
www.mta.info

SIR STATION SECURITY PROJECT

- Installation of CCTV surveillance and Customer Assistance Intercoms at 20 stations
- Project Schedule
 - Design completed
 - Construction underway
 - Completion: December 2009



STATEN ISLAND RAIL ROAD

- April 2007: SIRR Reactivation
- July 2007: New York Container Terminal Intermodal Center opened
- Total intermodal containers transported over SIRR in its first six months operation: 15,028
- Arthur Kill Lift Bridge handover to CSX
- 150,000 truck trips a year taken off the streets



April 17, 2007



VERRAZANO NARROWS BRIDGE

Mitigation Measures

- Two bus stops moved from Lily Pond to local streets, clearing the corridor as it leads to the Bridge.
- Restriped Father Capodanno ramp to two lanes
- PM Express Bus lane created in the Brooklyn Battery Tunnel
- Traffic signal timing extended
- Rush hour regulations
- Traffic agents assigned to key intersections
- SIE bus lane temporarily opened to HOV 2+ vehicles 3 PM - 7 PM Westbound



MEDIUM & LONG TERM INITIATIVES

- SOUTH SHORE FERRY
- CHARLESTON BUS ANNEX
- NORTH AND WEST SHORE STUDIES
- FRESH KILLS ROAD CONNECTIONS
- GOETHALS BRIDGE
- PARK & RIDES
- CHARLESTON AREA IMPROVEMNTS

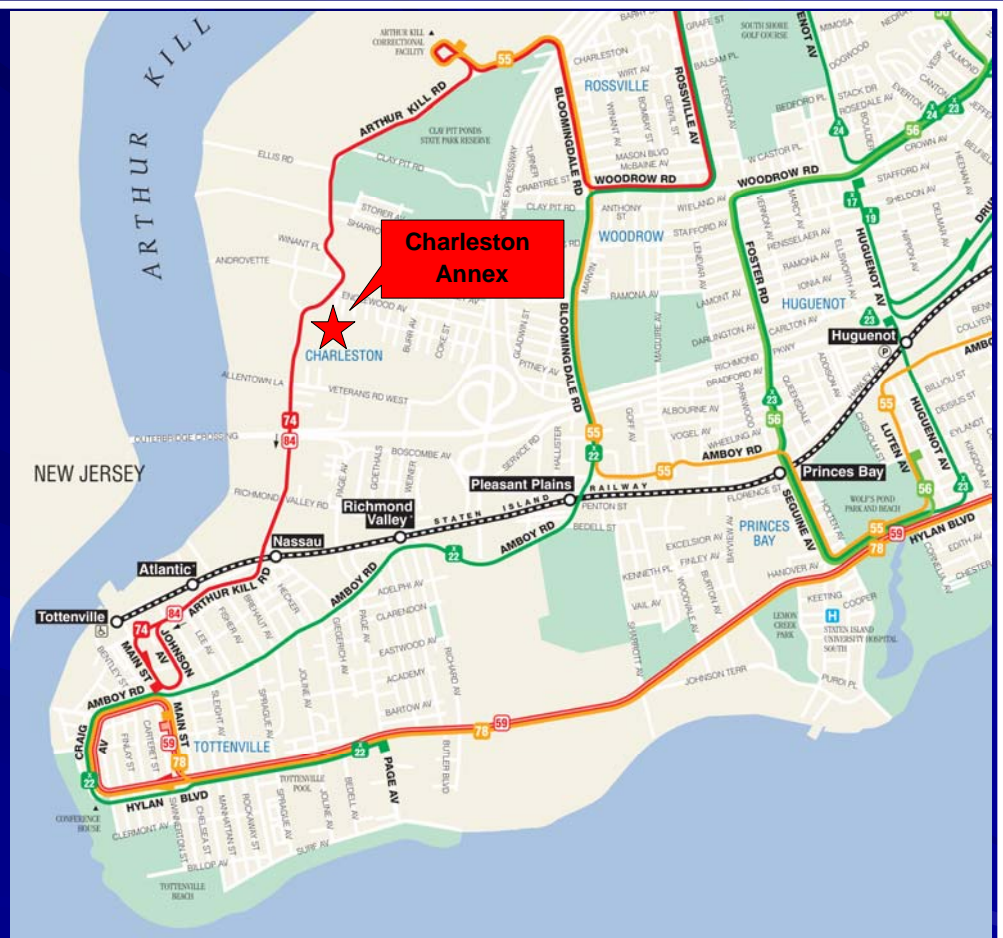
SOUTH SHORE FERRY SERVICE

- PA funded feasibility and planning study is almost complete
- Study analyzed three landing locations based on the following criteria:
 - Marine engineering
 - Cost of construction
 - Landside access/parking
 - Ridership
 - Planning/permitting issues



CHARLESTON BUS ANNEX

- 108,000 sq ft facility
- 200 buses
- Cost: \$112.9 M
- February 2008: Groundbreaking
- Construction to begin in Spring 2008.
- Substantial completion projected for December 2009.



WEST AND NORTH SHORE LAND USE AND TRANSPORTATION STUDIES

- DCP and NYC EDC partnering to coordinate West Shore and North Shore study efforts.
- Identify alternative land use scenarios and infrastructure needs.
- Review options for North Shore Rail's Right-of-Way
- Public participation modeled after the successful Stapleton Waterfront planning efforts.



Project Status:

- West Shore consultant selected.
- West Shore Advisory Committee meeting held January 2008.
- West Shore Study to hold public meeting on March 13.
- North Shore consultant to be selected by Summer 2008.

FRESH KILLS ROAD CONNECTIONS

- EIS/ULURP process - Potential impacts and mitigation under review
- Road design underway
- Consultants are focused on technical feasibility of building a road on this site. Issues of constructability, regulatory compliance and financing are governing design.

Next Steps:

- Spring 2008: Draft Environmental Impact Statement (DEIS) to be completed and ULURP application certified for public review.
- Summer 2008: Proposed road design to be advanced as part of environmental review.
- Fall 2008: Final Environmental Impact Statement (FEIS) and ULURP application to be completed.

GOETHALS BRIDGE REPLACEMENT

- Traffic analysis under review by operating agencies
- Related projects being coordinated with NYSDOT, NJDOT & NJ Turnpike Authority
- Spring 2008: Agency/stakeholder Committees will be convened
- Summer/Fall 2008: DEIS Release and Public Hearings



PARK & RIDES

PRINCE'S BAY & PLEASANT PLAINS

- New facilities planned

GREAT KILLS

- Expansion to 80 spaces

HUGUENOT

- Add 100+ spaces to the existing lot
- Construction: Scheduled for 2008/2009
- Status: Ready to begin final design. Consultant selection process has begun



BUS PARK & RIDES

ARTHUR KILL AND THE WSE

- Provide a new 200+ spaces served by Express bus
- Letting: Dec. '09
- Cost: \$8.6 million
- Status: Receiving design approval

ELTINGVILLE TRANSIT CENTER

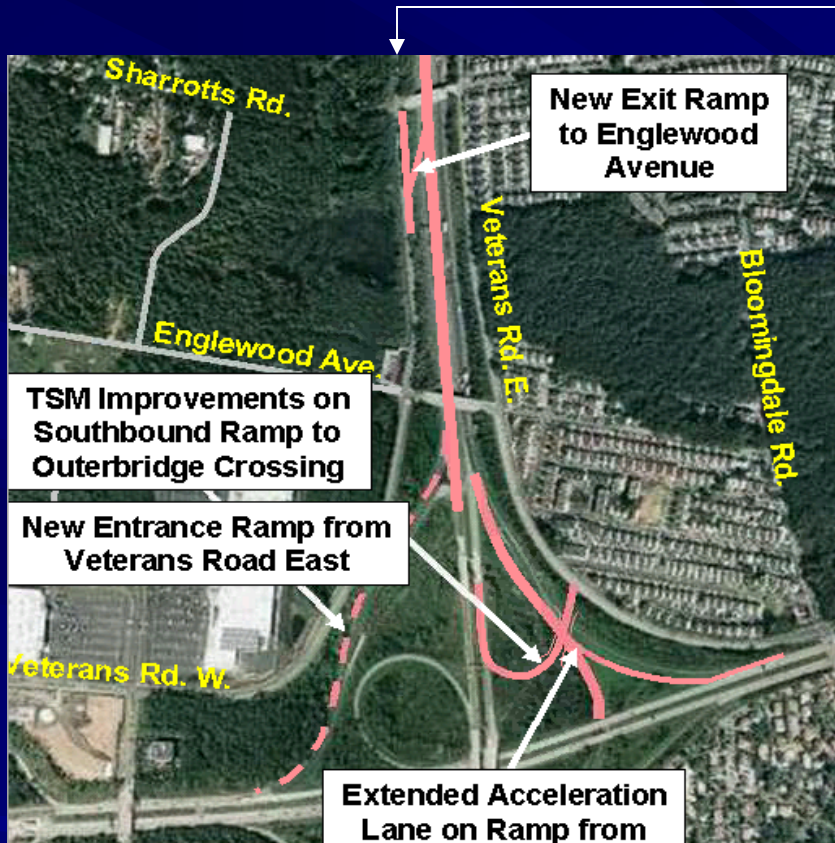
- Increase the number of parking spaces by 117
- Construction: 2008
- Cost: \$2.5 million
- Status: Project is in design

ELM PARK

- Examining opportunities in the Elm Park area to accommodate 89 riders



WEST SHORE EXPRESSWAY ACCESS IMPROVEMENT FOR CHARLESTON



- Project Letting: April '12
- Project Cost: \$23.5 million
- Status: In design

TRANSPORTATION NEEDS IN NEW YORK

- Meeting to be hosted by Comm. Astrid Glynn/New York State Department of Transportation
- A Transportation Round Table and Public Outreach Forum to discuss New York State Transportation needs
- The theme of the roundtable will be “Traffic Congestion/Issues and Solutions”
- Time: 6:00 PM to 8:30 PM
- Date: March 5th, 2008
- Location: College of Staten Island/College for the Arts (Bldg. 1-P), Williamson Theater

DOT ACADEMY

- A proactive effort to improve DOT and Community Board interaction
- An overview of how DOT makes decisions, our priorities, and how communities can work more closely with the agency
- Sessions will be held for all DMs, Board Chairs, and Transportation Chairs

