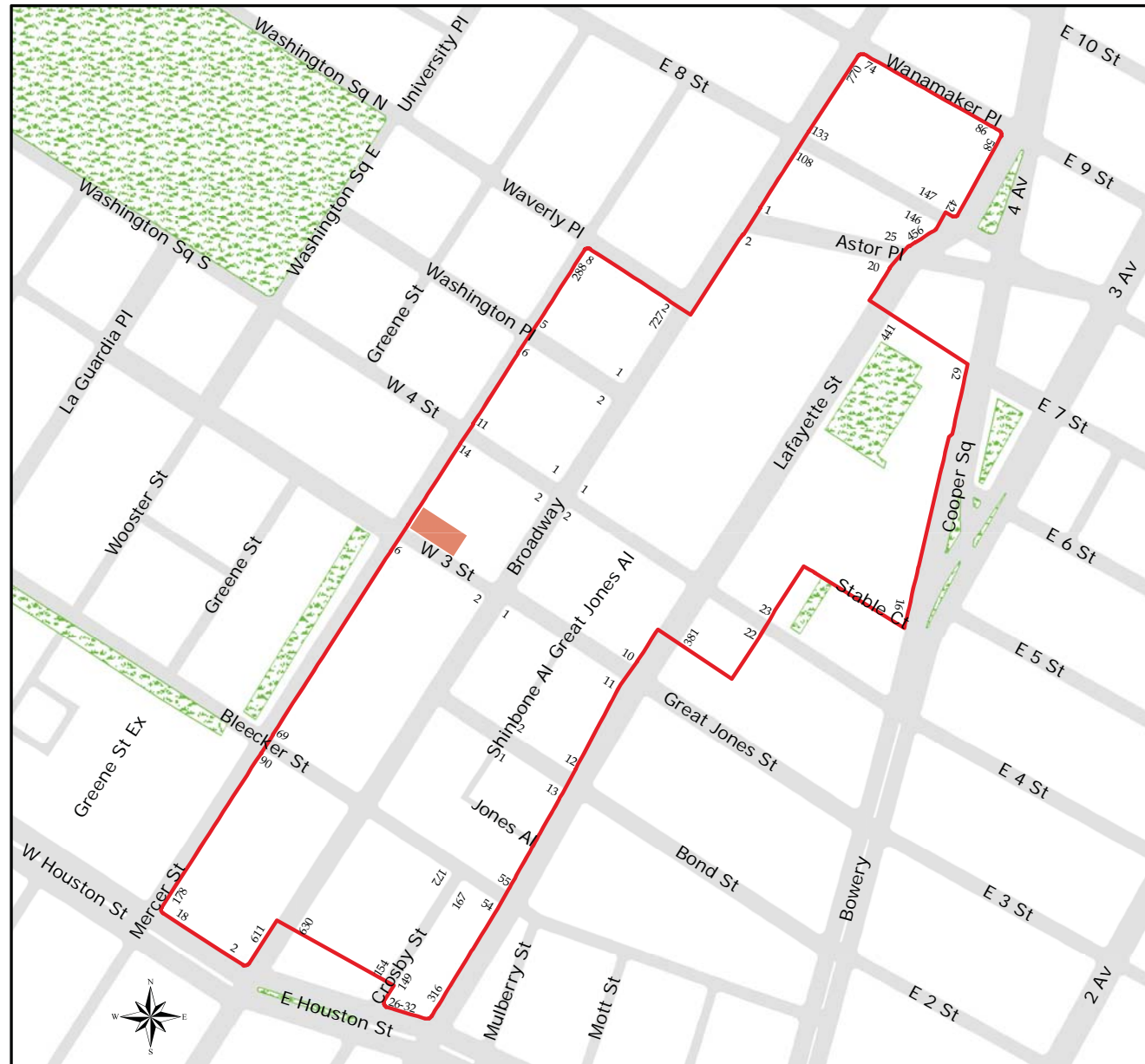



250 Mercer Street

Drawing List

DSK 161123-1	Historic District & Sanborn Maps
DSK 161123-2	Existing Building Photo
DSK 161123-3	Tax Department Photo - 1940
DSK 161123-4	LPC Designation Photo
DSK 161123-5	Existing Building Detail Photos
DSK 161123-6	Existing Mercer St. Elevation
DSK 161123-7	Existing W3rd St. Elevation
DSK 161123-8	Existing Building Elevations
DSK 161123-9	Proposed Rendering - Corner of Mercer and W3rd Sts.
DSK 161123-10	Proposed Rendering - Looking along W3rd Street
DSK 161123-11	Proposed Elevation - Mercer Street
DSK 161123-12	Proposed Elevation - W3rd Street
DSK 161123-13	Design Precedents - Index
DSK 161123-14	Design Precedents - Storefronts
DSK 161123-15	Design Precedents - Texture & Pattern in Masonry
DSK 161123-16	Existing & Proposed Plans - Cellar
DSK 161123-17	Existing & Proposed Plans - Ground Floor
DSK 161123-18	Existing & Proposed Plans - Roof
DSK 161123-19	Sight Lines Diagram
DSK 161123-20	Material Samples



Noho
Historic District
Manhattan
Designated: June 29, 1999

 Historic District Boundaries



NOHO Historic District Map



Sanborn Map







Photo at Corner of Mercer & W. 3rd Streets



Photo at Mercer Street Facade



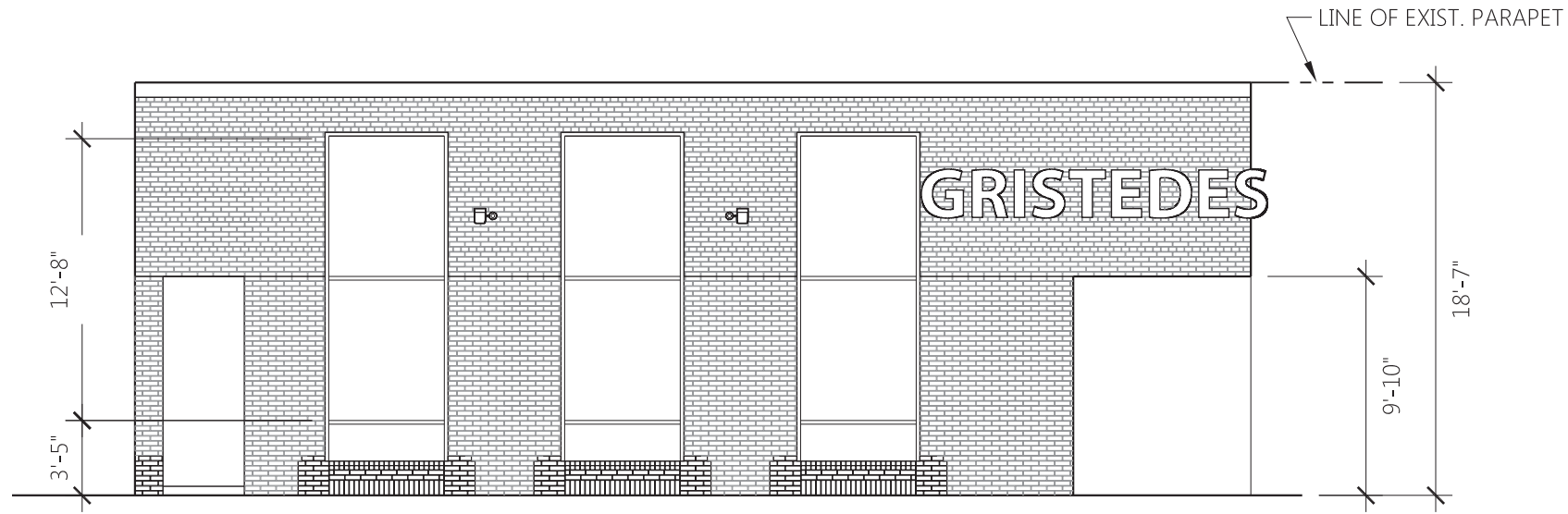
Detail Photo at Altered Corner Sliding Door



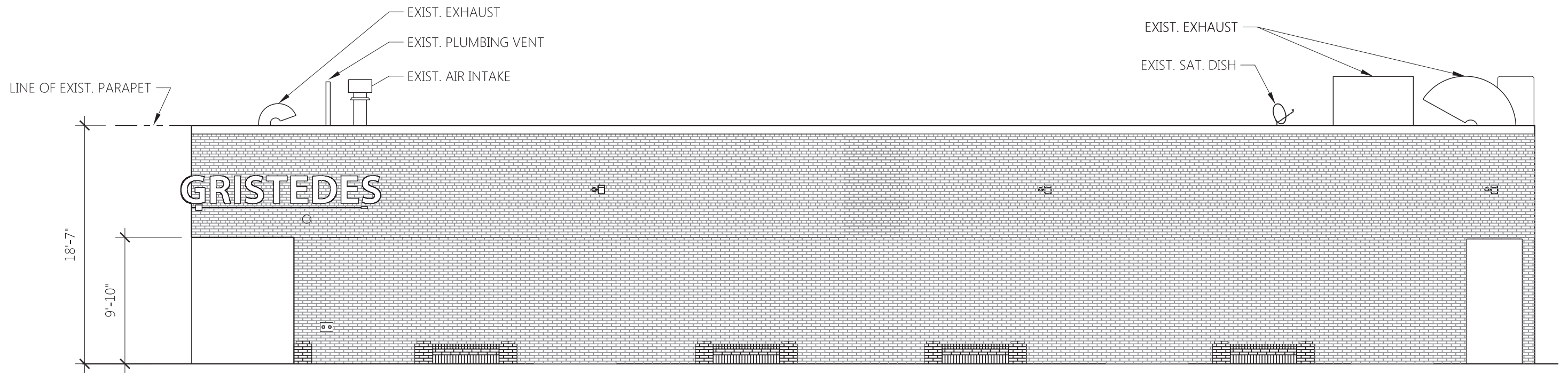
Detail Photo at Typical Altered Window





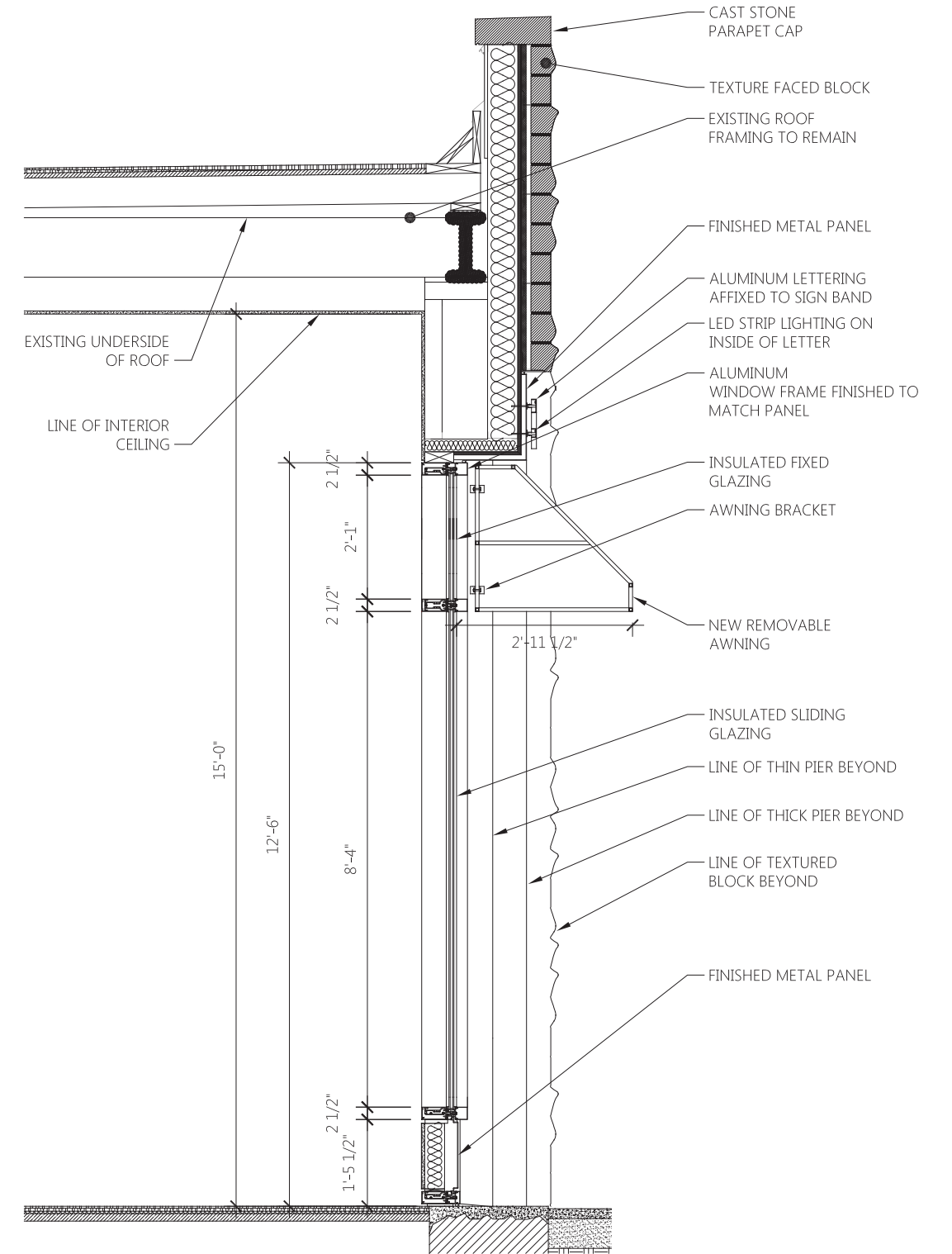


Existing Mercer Street Elevation: Scale 1/8" = 1'-0"



Existing West 4th Street Elevation: Scale 1/8" = 1'-0"





Facade Detail: Scale 3/8" = 1'-0"







Design Precedents

- 1 11-19 East 4th Street aka 390-400 Lafayette Street
Cleverdon & Putzel 1887-88 (Neo-Grec)
- 2/8/9 683-685 Broadway
W. Wheeler Smith 1899-1901 (Georgian Revival)
- 3/7 258 Mercer Street (aka 14 W. 4th)
J. Kastner 1894-95 (Romanesque Revival)
- 4 4-8 Astor Place aka 442 Lafayette Street
Francis H. Kimball 1891 (Romanesque/Renaissance Revival)
- 5 696 to 702 Broadway aka 1-7 East 4th Street
George B. Post 1890-91 (Romanesque Revival)
- 6 428,430,432,434 Lafayette Street aka Colonnade Row
Seth Geer (attributed) 1832-33 (Greek Revival)
- 7 3-5 Washington Place aka 282-284 Mercer Street
Alfred Zucker 1890-91 (Renaissance Revival)

The Neighborhood is characterized by ground floor retail and restaurant uses with large storefront windows. The bays are typically taller than they are wide and they often include transom glass at the top and a pan-elled bulkhead at the ground. The bays are often divided by major and minor piers. At the upper storeys one finds many examples of textural effects produced in brick and stone.



photo 1: 11-19 East 4th Street (1887-88)



photo 2: 683-685 Broadway - West 3rd at Broadway (1899-1901)



photo 3: 258 Mercer Street - Southeast Corner Mercer & West 4th (1894-95)



photo 4: 4-8 Astor Place (1891)

The base condition at many buildings in the neighborhood:

Tall groundfloor.

Large storefront windows with transom glass and panelled bulkhead. The proportion of each bay accentuates the verticality.

Bays are often separated by major and minor piers.

Continuous storefront cornice.



photo 5: 696-702 Broadway (1890-91)



photo 6: 428,430,432,434 Lafayette Street (1832-33)

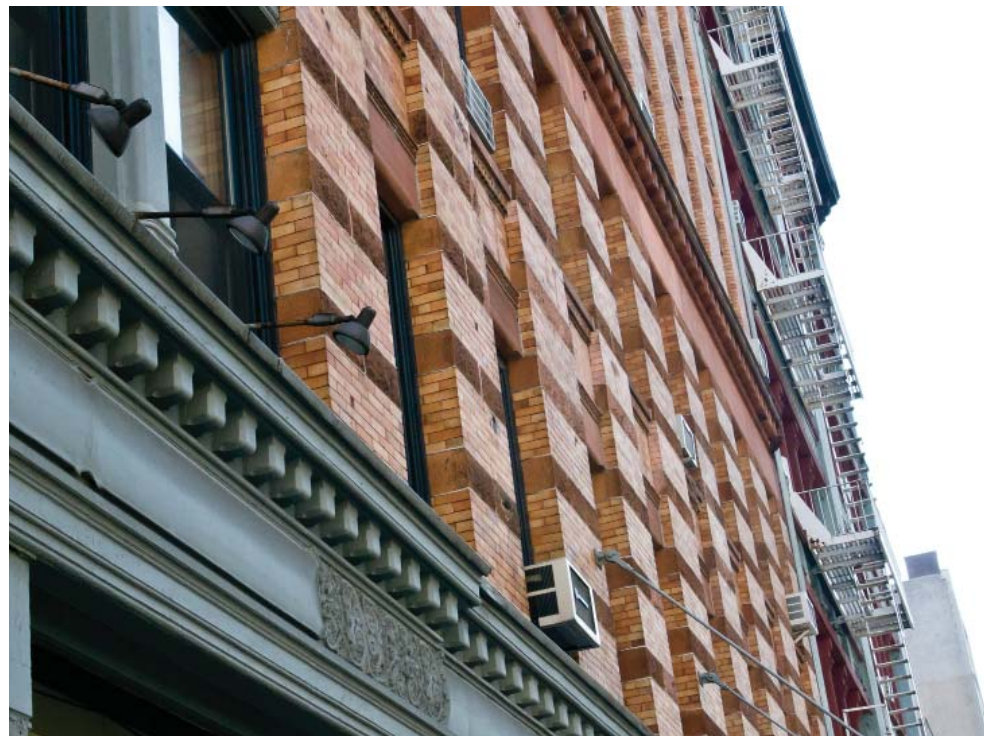


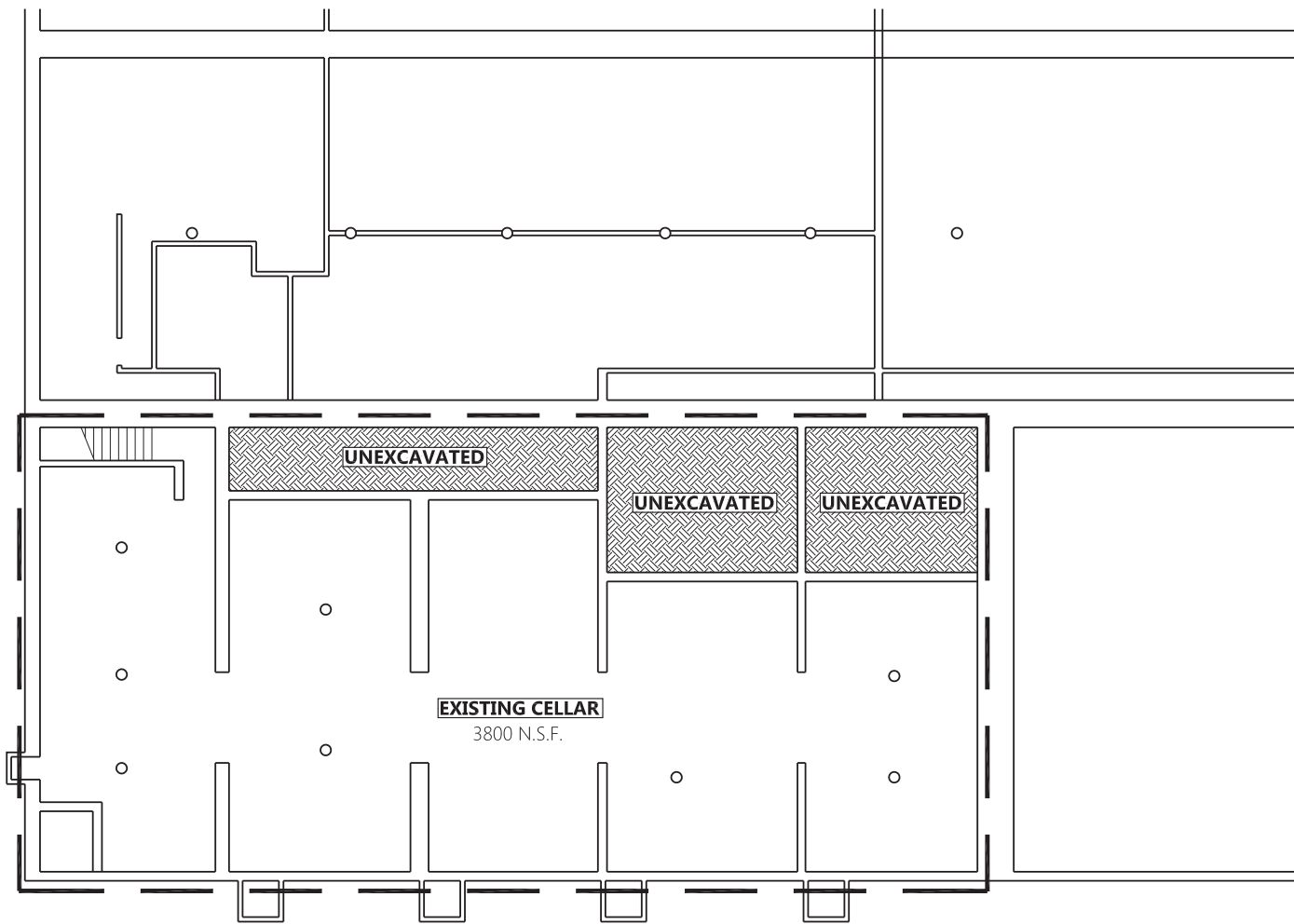
photo 7: 258 Mercer Street - Mercer btw West 3rd & West 4th (1894-95)



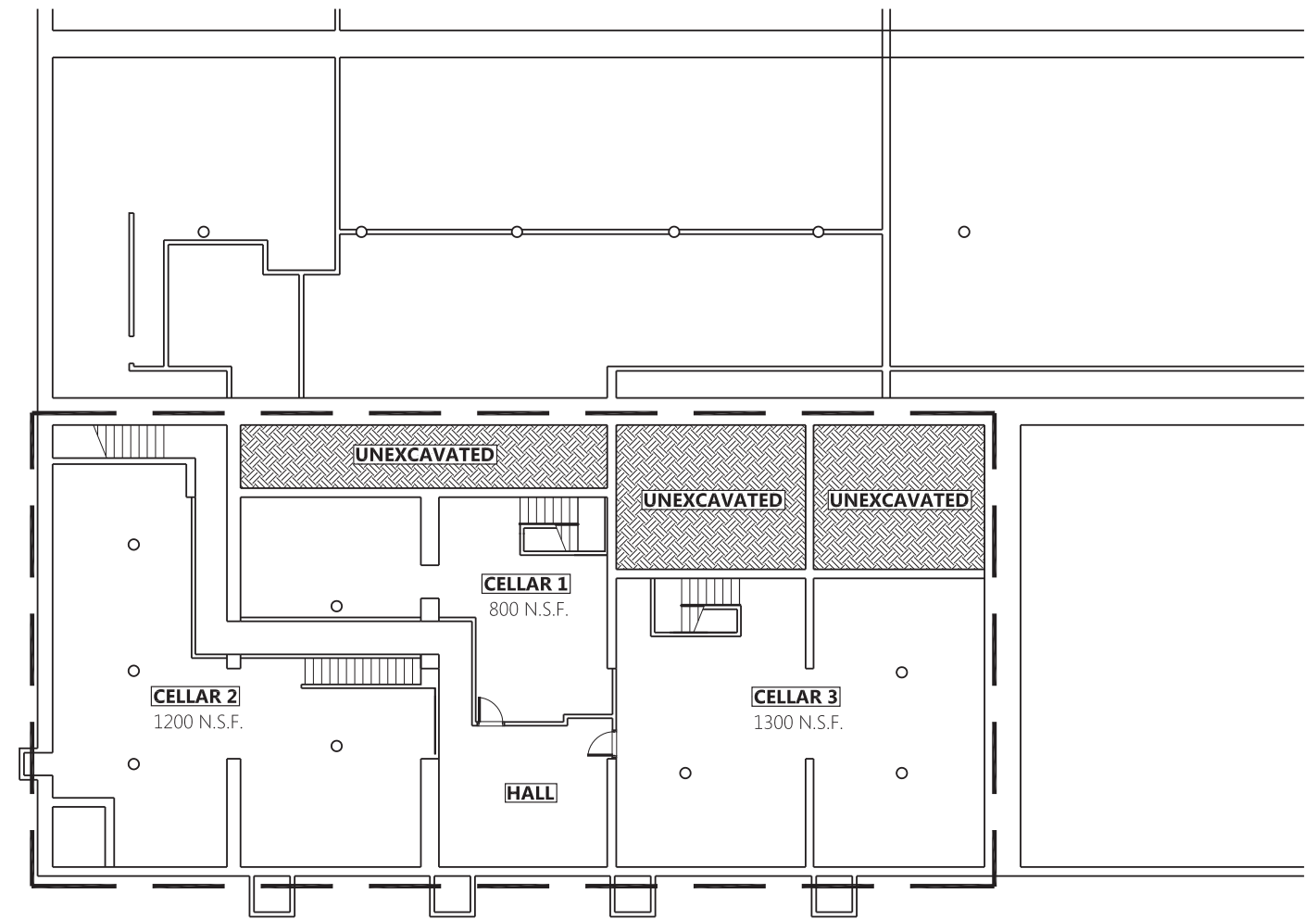
photo 8/9: 683-685 Broadway - Northwest Corner of Broadway and West 3rd (1899-1901)



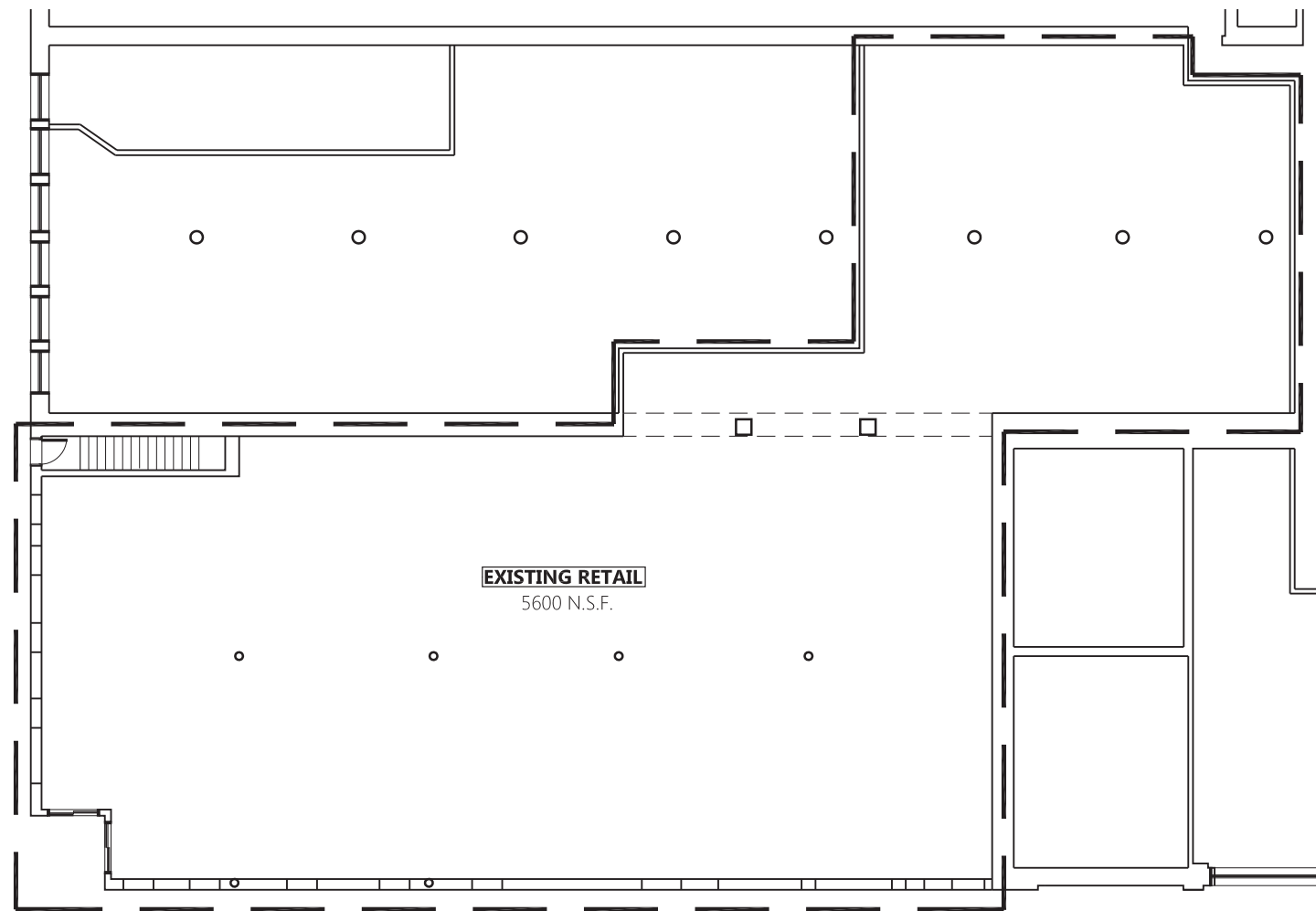
Several examples of texture and pattern in masonry facades. History of brick and stone used to create variation in the surface of the building.



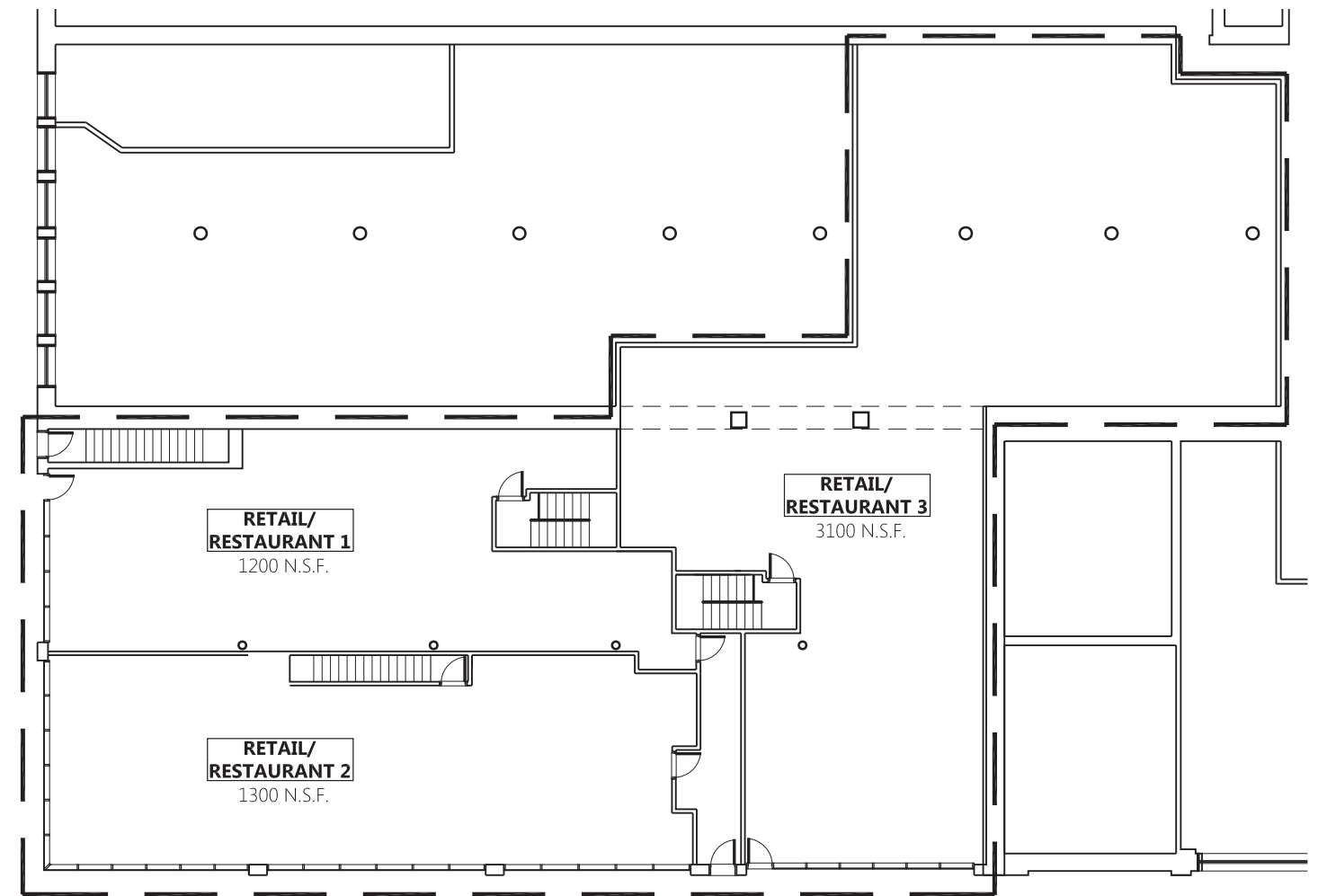
EXISTING GROCERY STORE PLAN - CELLAR N.T.S.



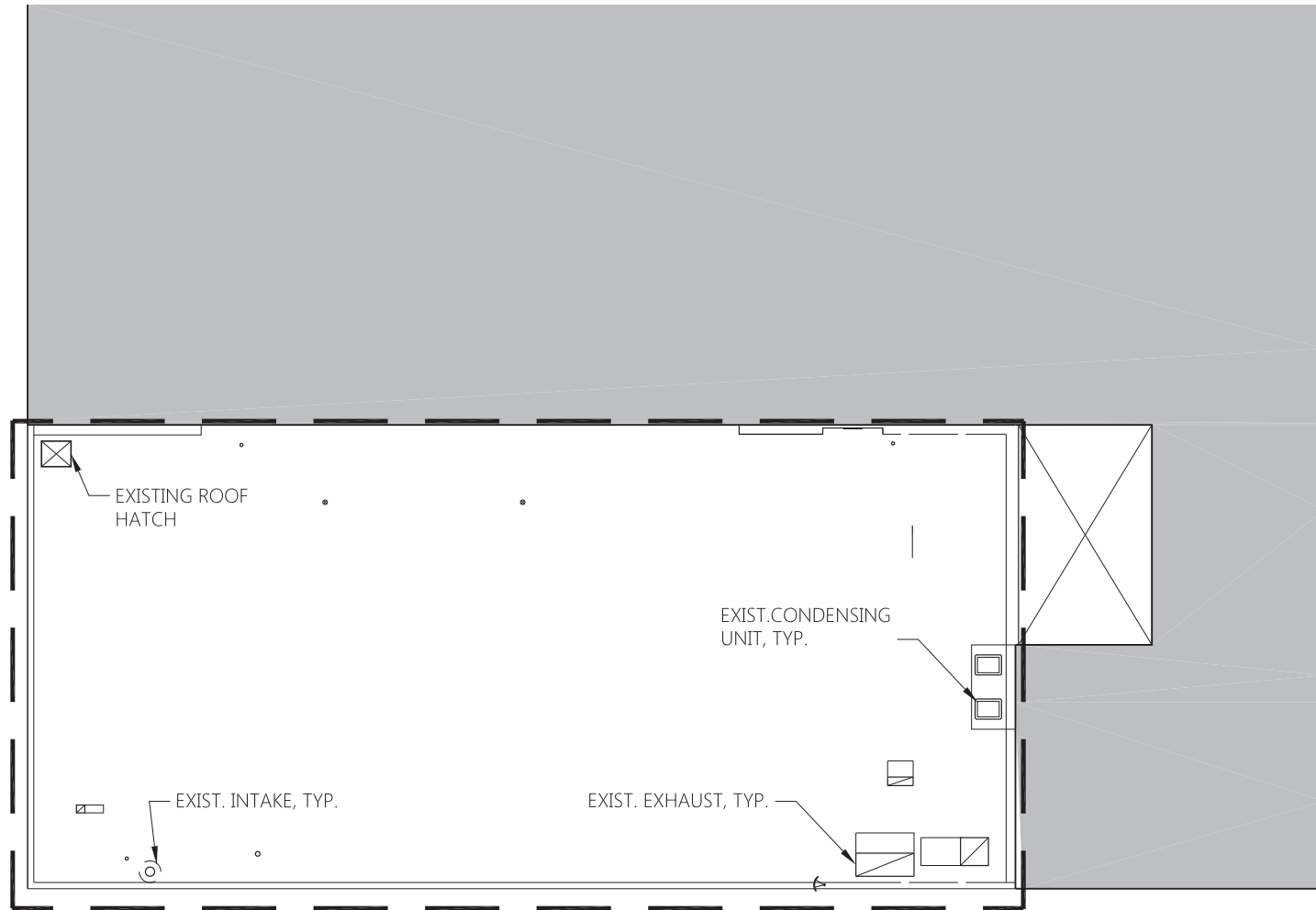
PROPOSED RETAIL/RESTAURANT PLAN - CELLAR N.T.S.



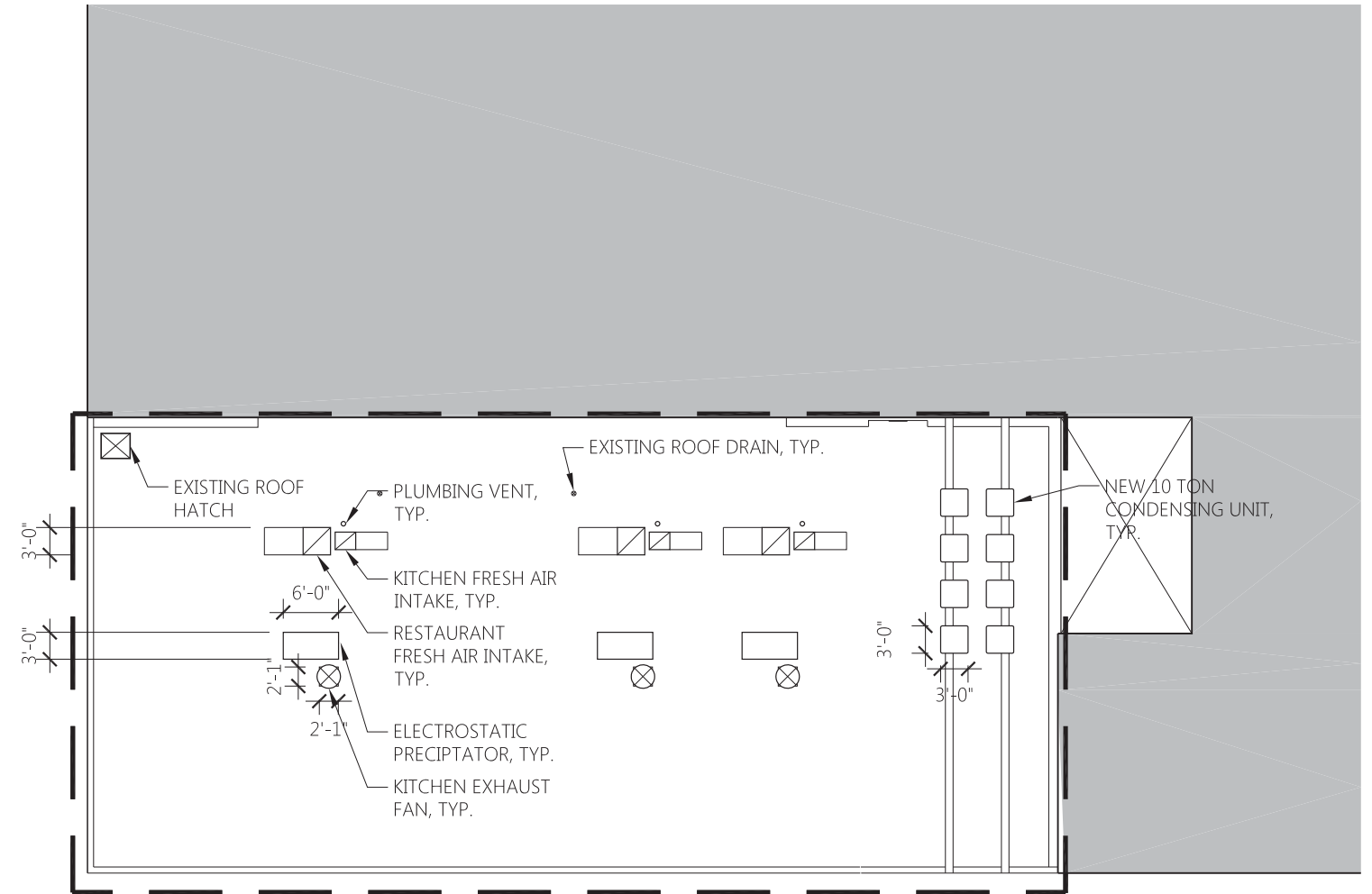
EXISTING GROCERY STORE PLAN - GROUND FLOOR N.T.S.



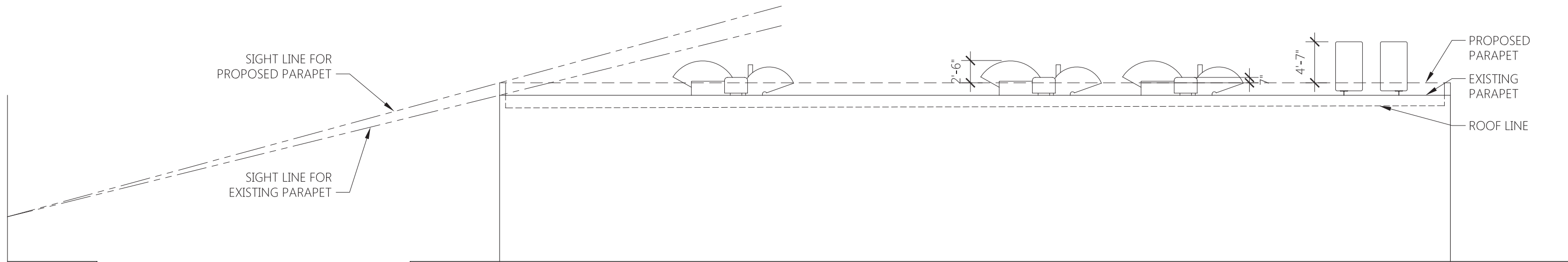
PROPOSED RETAIL/RESTAURANT PLAN - GROUND FLOOR N.T.S.



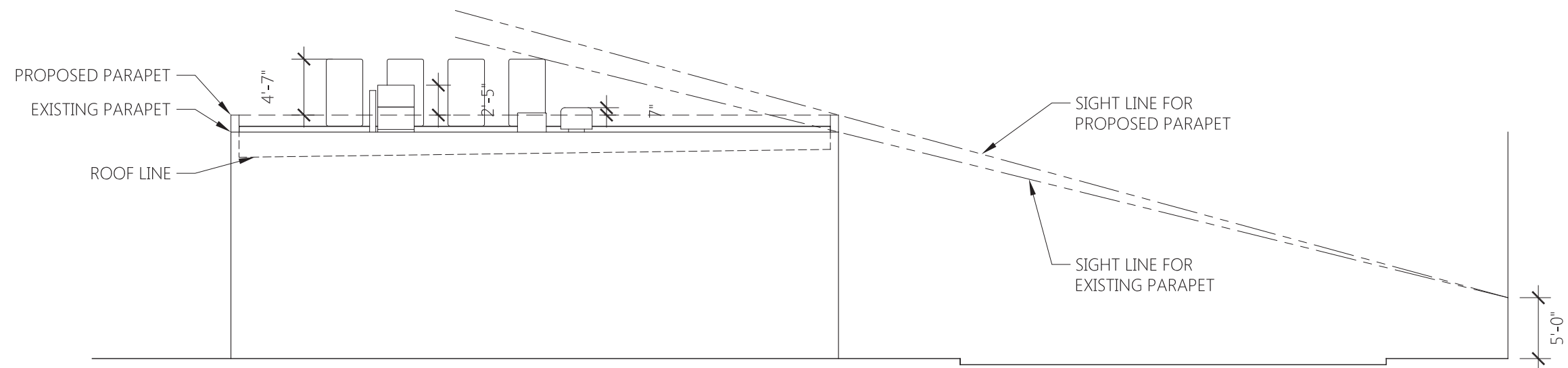
EXISTING GROCERY STORE PLAN - ROOF N.T.S.



PROPOSED RETAIL/RESTAURANT PLAN - ROOF N.T.S.



West 3rd Street Elevation Showing Proposed Mechanical Equipment: Scale 3/32" = 1'-0"



Mercer Street Elevation Showing Proposed Mechanical Equipment: Scale 3/32" = 1'-0"



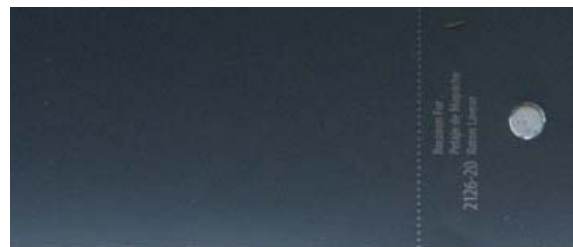
Cast Stone
Facade Blocks



Finished Aluminum
Charcoal
Storefront Mullions & Panels



Acrylic Fabric
Burgundy
Awnings



Paint
Owl Gray
Exterior Metal Door



Finish Color
RAL 9001
Metal Chanel Signage



