

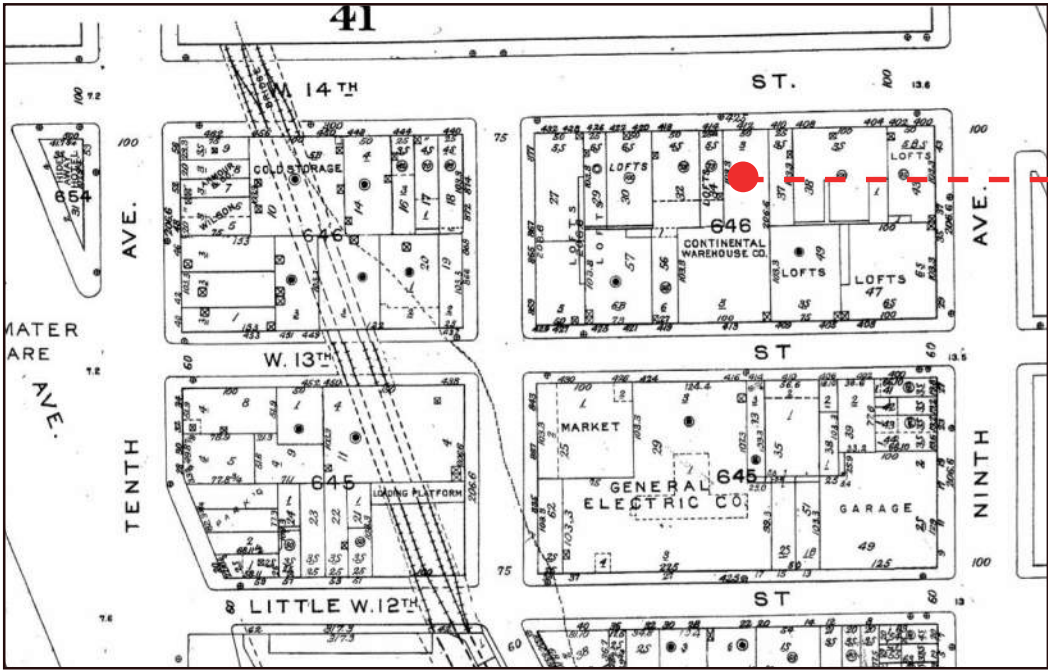
412 W. 14th Street
Preliminary Landmarks Presentation

Landmarks Preservation Commission Submission
October 22nd, 2015

Project Overview

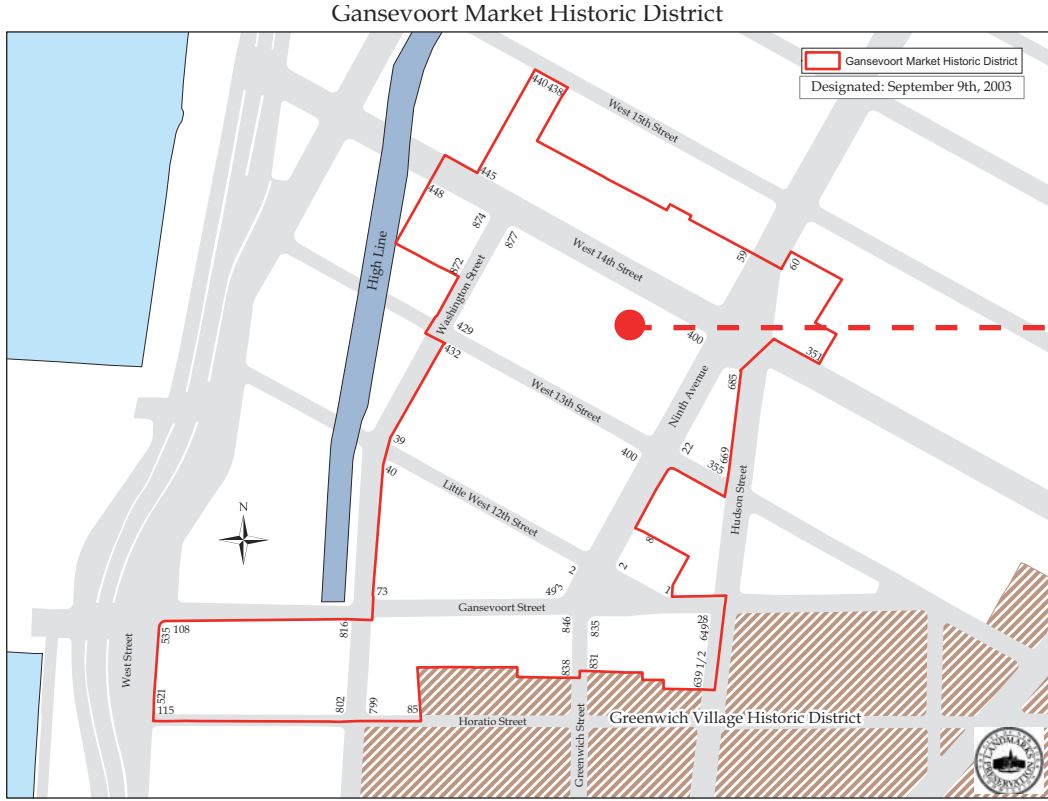


14th Street View



--- 412 W. 14th Street

Sanborn Map Detail



--- 412 W. 14th Street

Historic District Map

Historic Photos



West 14th Street, 1931 (NYPL)

Historic Photos



Tax Photo, c. 1940



Tax Photo, c. 1980



LPC Designation Photo, c. 2002

Existing Base Photos



Existing Roof Photos



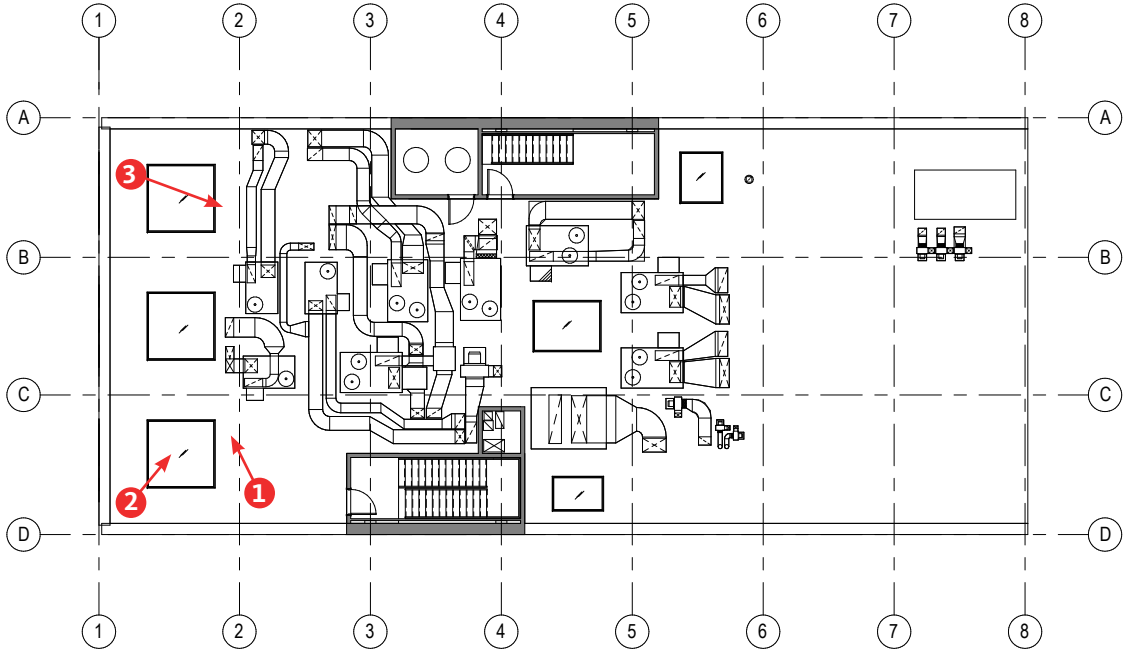
1 - Looking East



2 - Looking Southeast



3 - Looking South



Key Plan

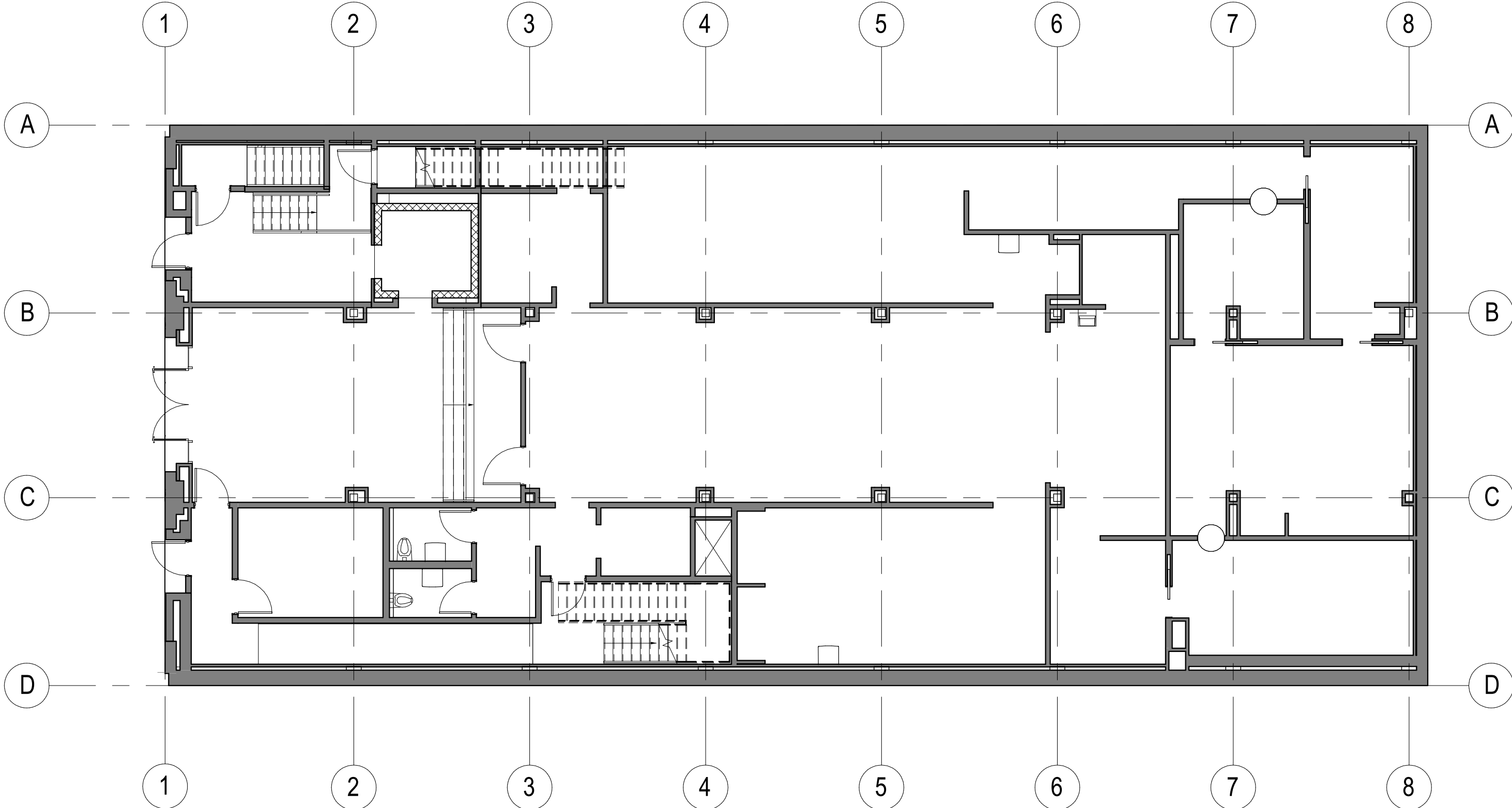
Existing Canopies in the District



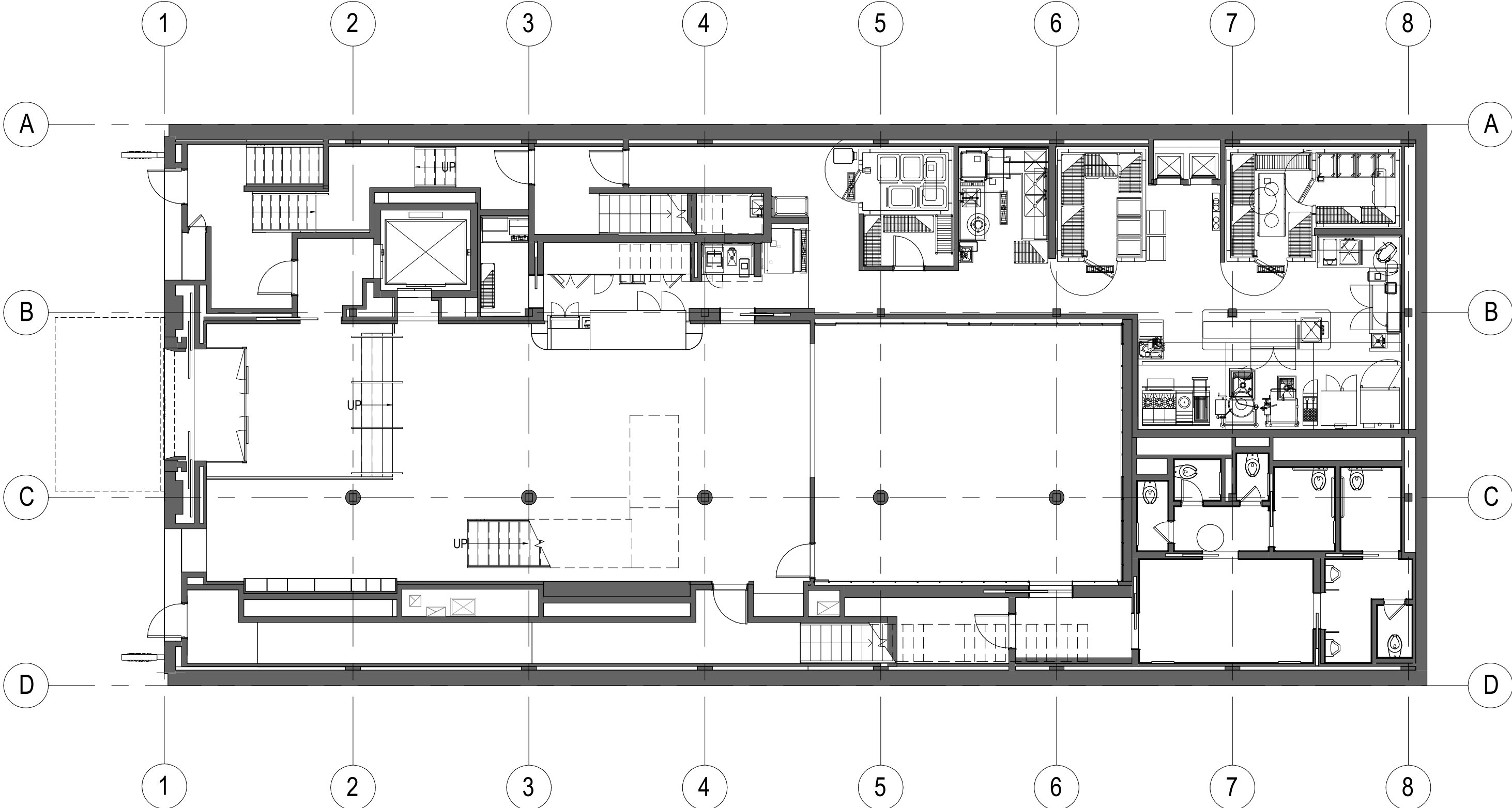
Existing Bulkheads in the District



Existing First Floor Plan



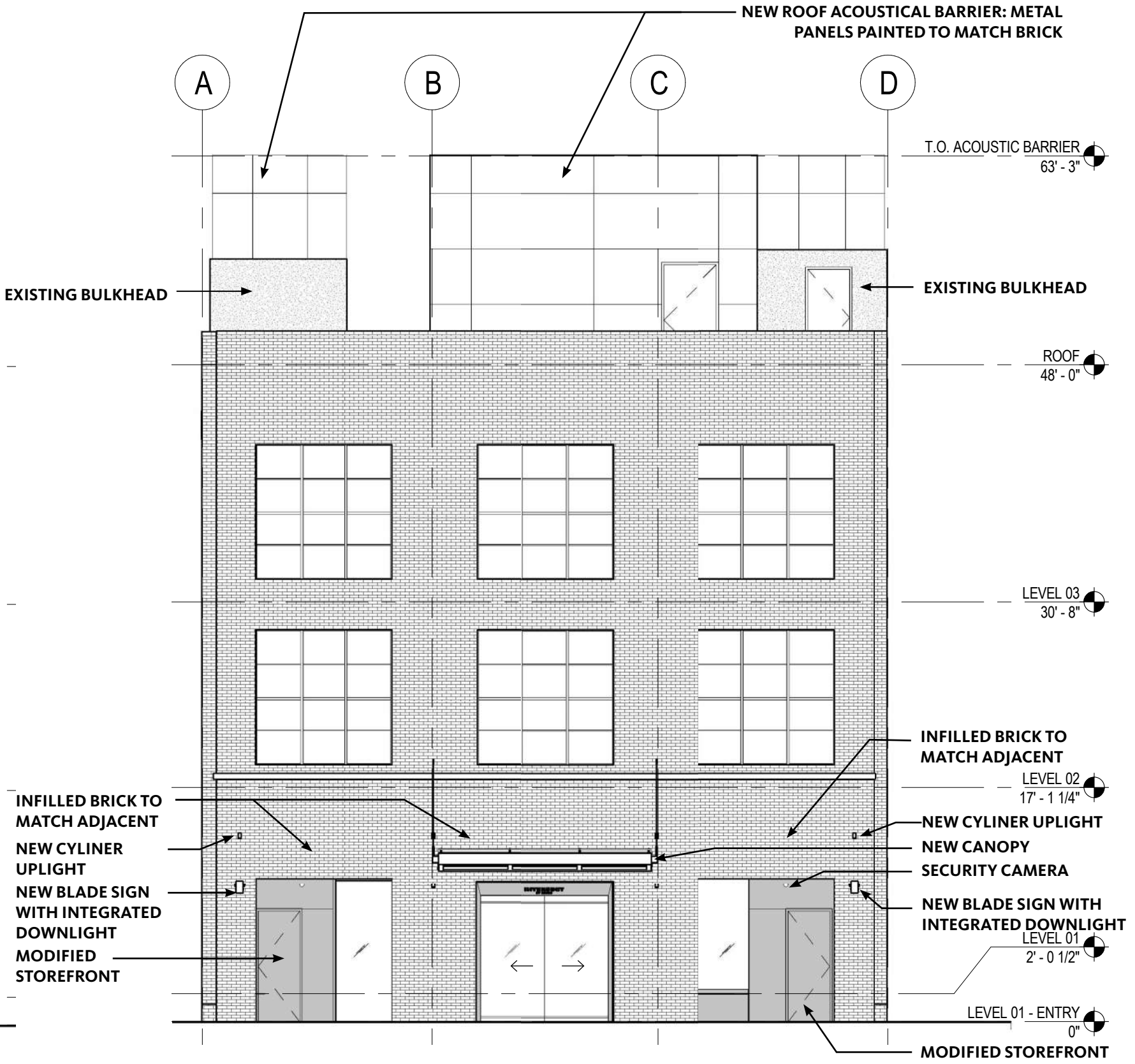
Proposed First Floor Plan



Existing & Proposed Facade Elevations

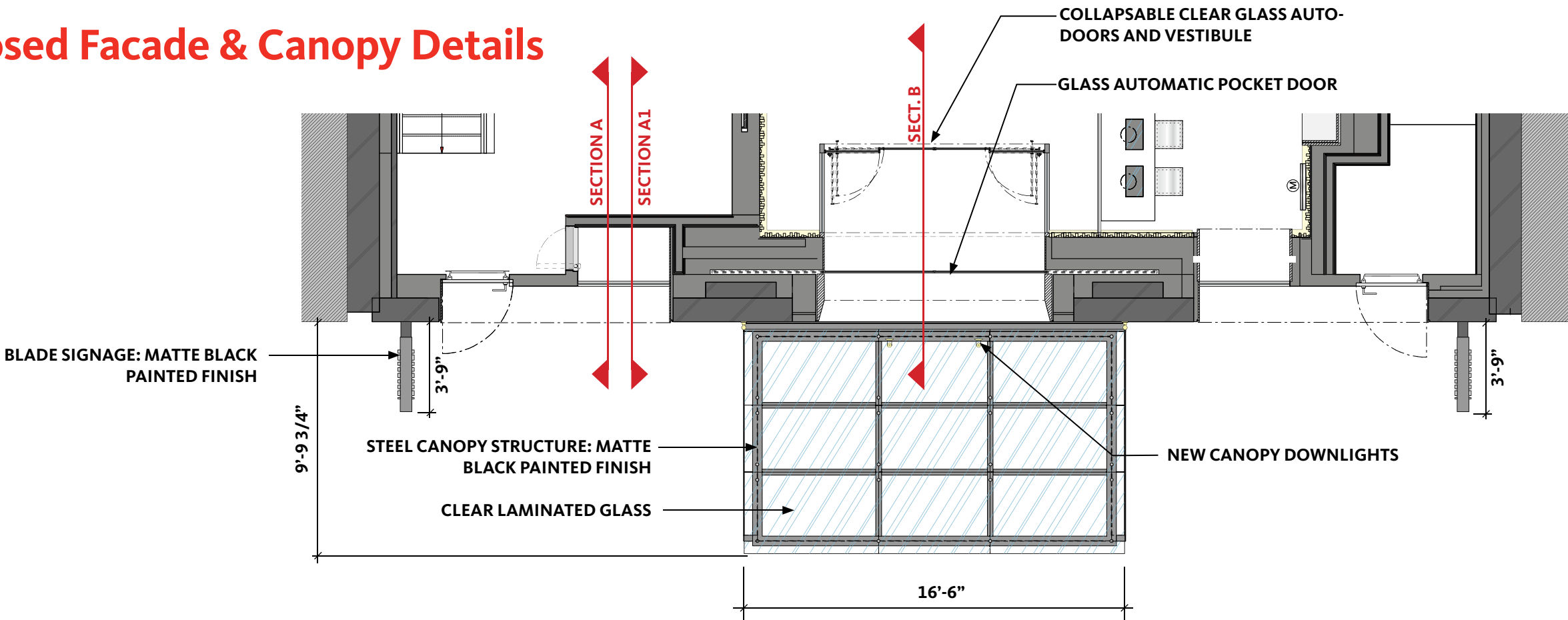


Existing Elevation

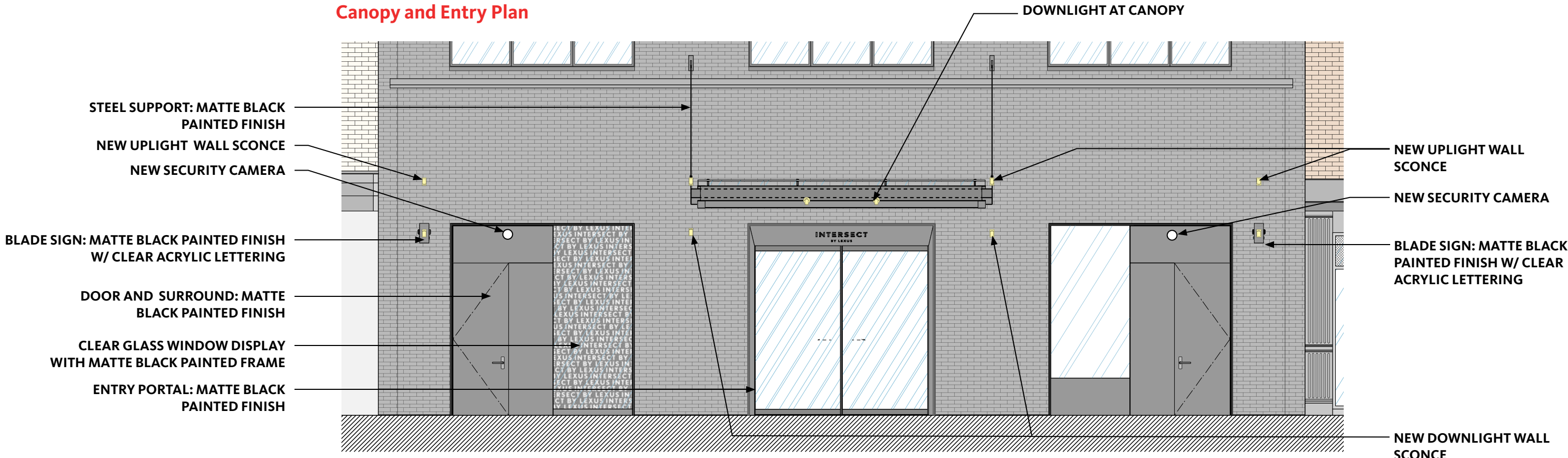


Proposed Elevation

Proposed Facade & Canopy Details

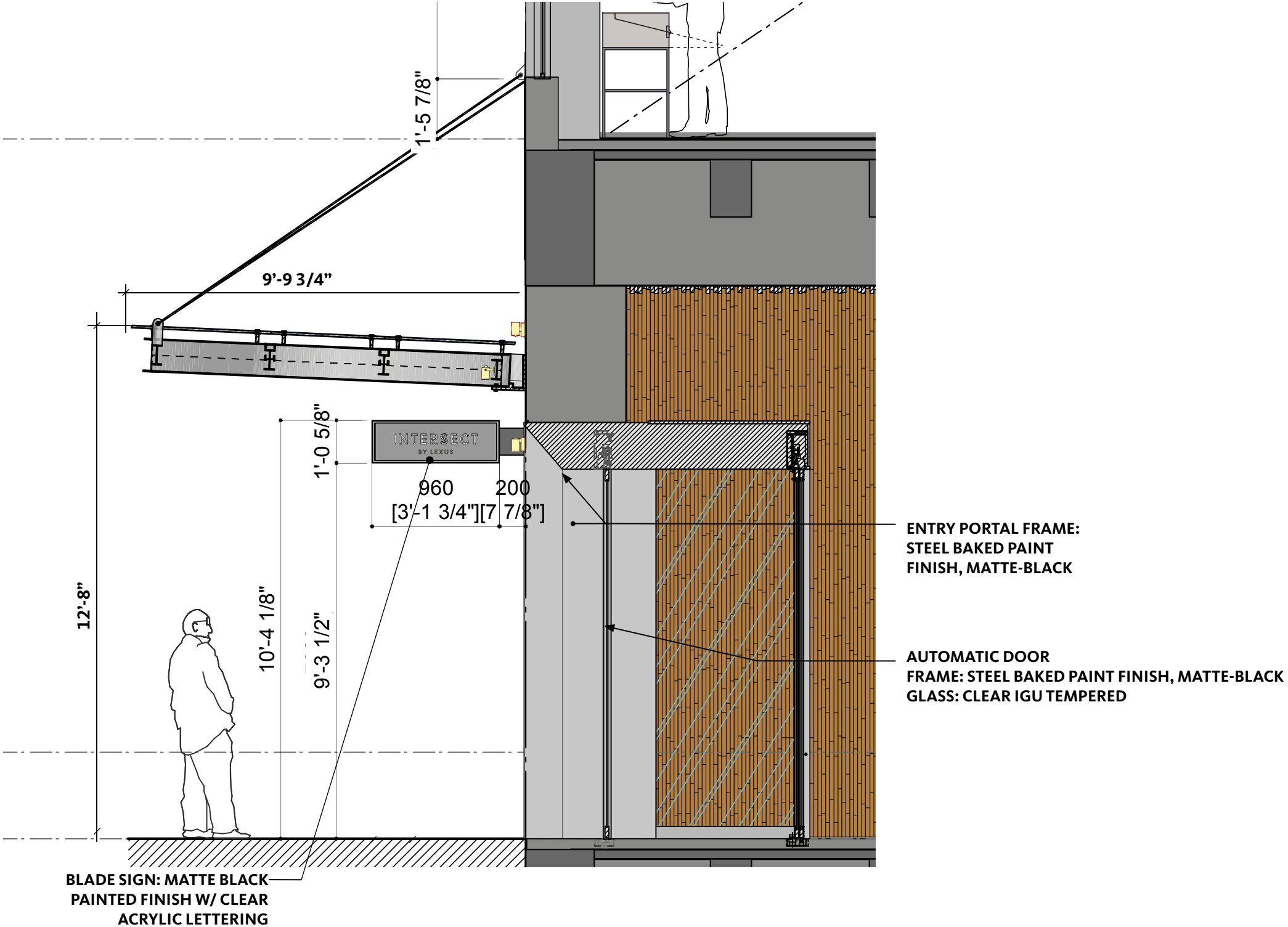


Canopy and Entry Plan



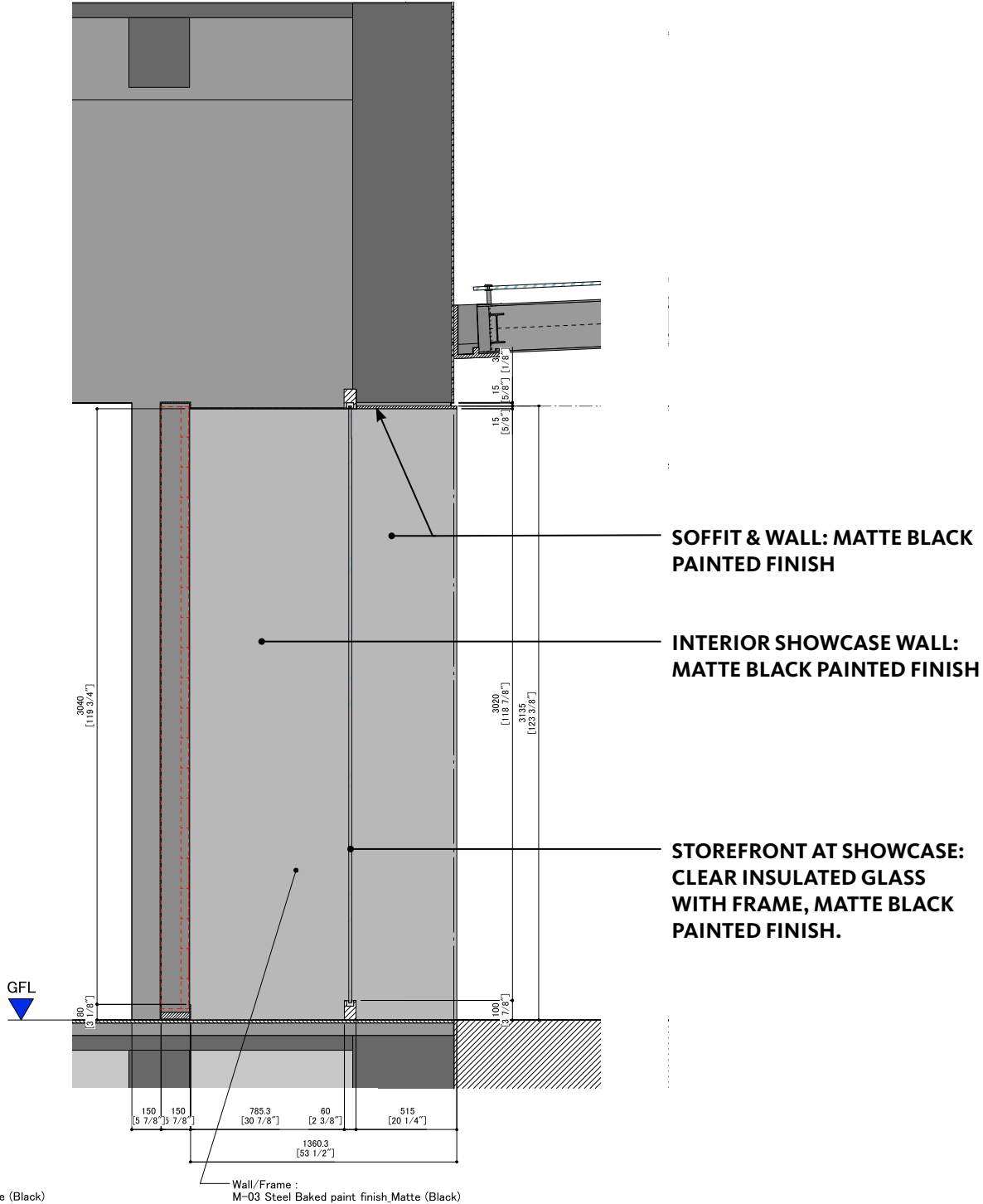
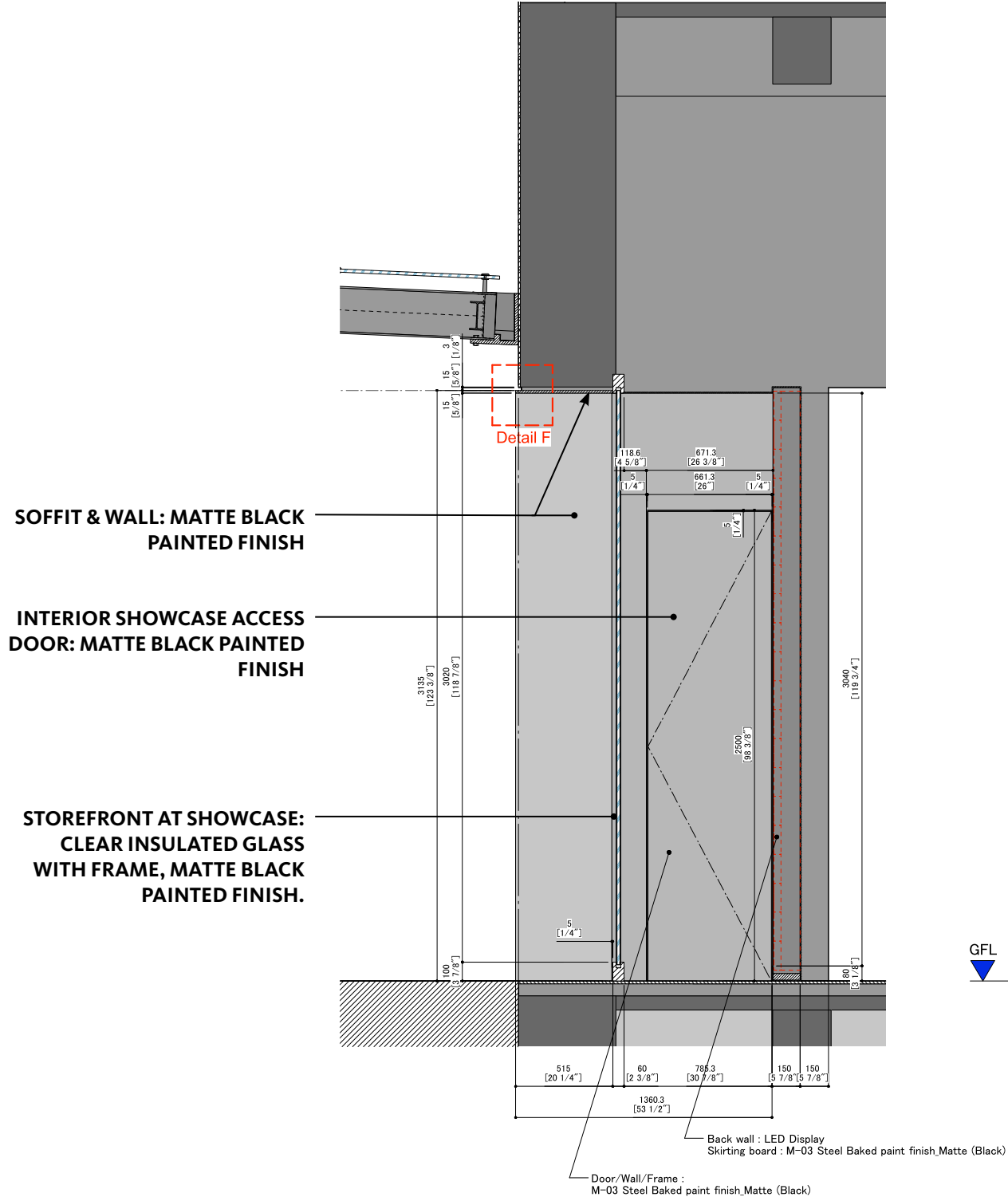
Base Elevation

Proposed Facade & Canopy Details



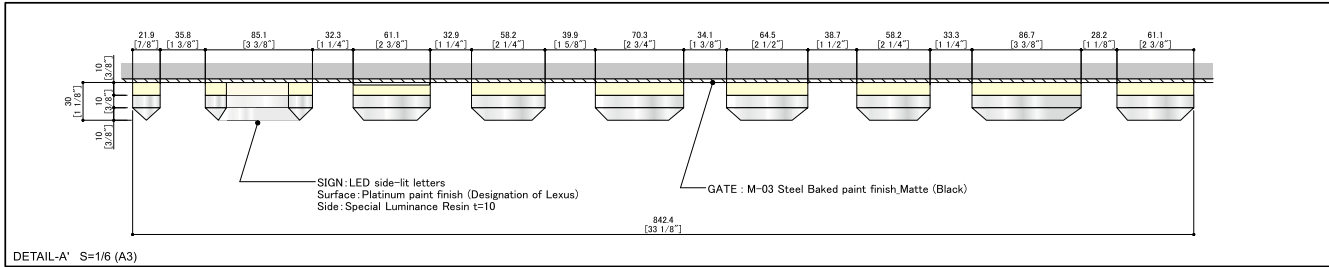
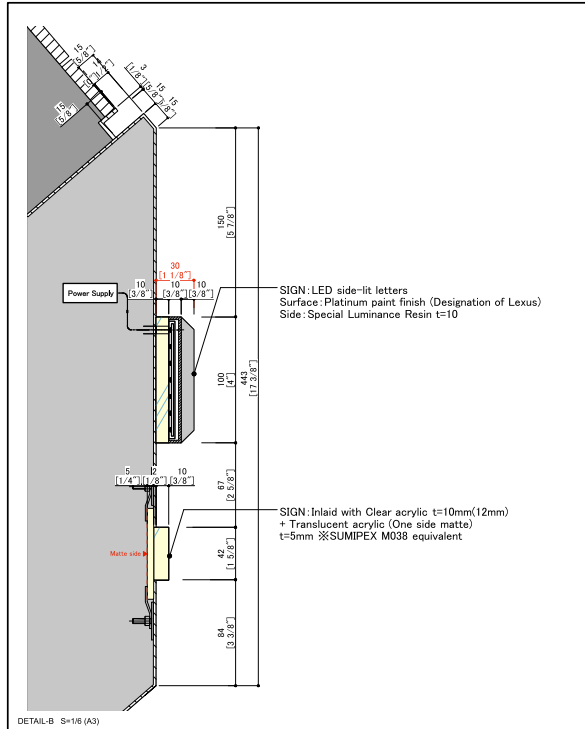
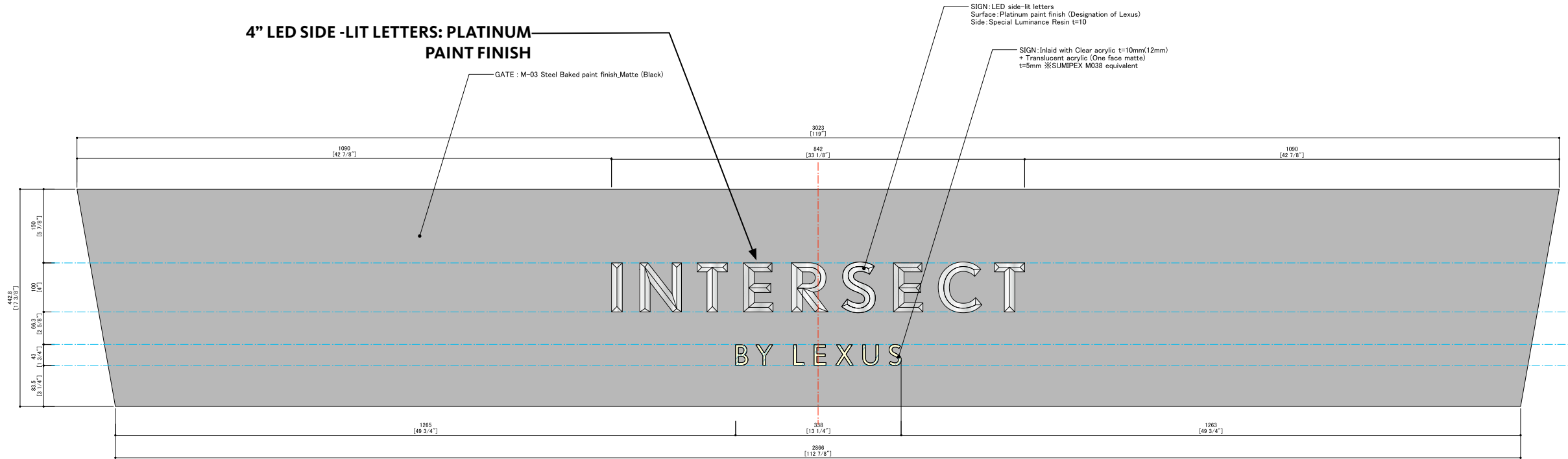
Canopy and Entry Section B

Proposed Facade & Canopy Section Details



East Display Window Sections A & A1

Proposed Entry Portal Signage Details



Proposed Exterior Light Fixtures

	WALL SPOT LIGHT IVT108-B(INTENSE)	MR16 GU5.3(35° /2700K/460lm) MR16-50-B01-12-927-35(SORAA)	**Black **LH3(Lens Holder) **PFL4-S(Soft Focus Lens)
--	--------------------------------------	--	--

http://www.intenselighting.com/

IVT108

Low Voltage Wall Mount Mini Cylinder Downlight

120/12V Electronic transformer only included if specified

For use with a single gang junction box

DESCRIPTION
The Vortech mini cylinder downlight is for use with (1) 12V MR16 50W max. Fixtures are available in 316 stainless steel or die-cast aluminum. The 316 stainless steel is of marine grade quality and has superior corrosion resistance. Die-cast aluminum is available in powder coated black or bronze. Custom powder coat finishes are available, consult factory. To ensure the natural appearance of stainless steel, regular cleaning is necessary.

FEATURES

- Aesthetic appearance
- Easy lamp replacement. Lamp covers held by tamper proof locking screws
- Optional integral 120/12VAC electronic transformer included if specified. Specify **-TR**
- Indoor / outdoor applications
- Back plate allows fixture to mount flush against the wall without exposed back plate

LAMP
(1) 50W 12V MR16

SOCKET
GU5.3

MOUNTING
Rectangle canopy for 2" x 3" switch box

Order Matrix | Example: IVT108ST-TR

A	B	C
A Series		C Accessories
IVT108 Canopy for 2" x 3" switch box		-TR 120/12V Electronic Transformer -IPV100 45° Cutoff Directional Shield
B Finish ¹		
ST Brushed Stainless Steel		
BR Bronze Aluminum		
B Black Aluminum		
SU Surface ²		

Notes:
1. Custom powder coat finishes available, consult factory. Minimum order quantity apply.
2. See Surface² simulated natural finishes submittal sheet for specification.

Accessories
Luminaire will accommodate up to (3) 1 1/4" filters. Accepts one diffusion filter and two color filters or louvers. Triple media lens holder required.

Accessories	Color Filters	Filter Media	
LH3 (3) Media Lens Holder	PFL-S Amber Lens	PFL1-S Prismatic Spread Lens	
	PFL6-S Red Lens	PFL2-S Linear Spread Lens	
	PFL7-S Yellow Lens	PFL3-S Steel Beveled Lens	
	PFL8-S Green Lens	PFL4-S Soft Focus	
	PFL9-S Blue Lens	PFL7-S UV Filter	
		PFL14B-S Black Hex Louver	

INTENSE

WALL MOUNTED SCONCE

	WALL SPOT LIGHT IVT101-B(INTENSE)	MR16 GU5.3(35° /2700K/460lm) MR16-50-B01-12-927-35(SORAA)	**Black
--	--------------------------------------	--	---------

http://www.intenselighting.com/

IVT101

Low Voltage Adjustable Wall Mount Cylinder

120/12V Electronic transformer only included if specified

For use with a 3 1/2" round junction box

DESCRIPTION
The Vortech adjustable mini cylinder is for use with (1) 12V MR16 50W max. Adjustable up to 358° and locking hex screw for precise aiming. Fixtures are available in 316 stainless steel or die-cast aluminum. The 316 stainless steel is of marine grade quality and has superior corrosion resistance. Die-cast aluminum is available in powder-coated black or bronze. Custom powder coat finishes are available. Consult factory. To ensure the natural appearance of stainless steel, regular cleaning is necessary.

FEATURES

- Aesthetic appearance
- Easy lamp replacement
- Indoor / outdoor applications
- Back plate allows fixture to mount flush against the wall without exposed back plate

LAMP
(1) 50W 12V MR16

SOCKET
GU5.3

MOUNTING
3 1/2" round junction box

ELECTRICAL
120V input. Fixture is fully gasketed and ETL listed for wet locations. Fixture may be dimmed without special modification or specification. Specify **-TR** for 120/12VAC electronic transformer.

MAINTENANCE
Stainless steel requires regular cleaning and maintenance to prevent tarnishing or tea staining.

SURFACE² SIMULATED NATURAL FINISHES
- Available in 12 standard wood grain powder coated finishes
- Consult factory

LISTING
ETL listed to US and Canadian standards for wet locations.

Order Matrix | Example: IVT101ST-TR

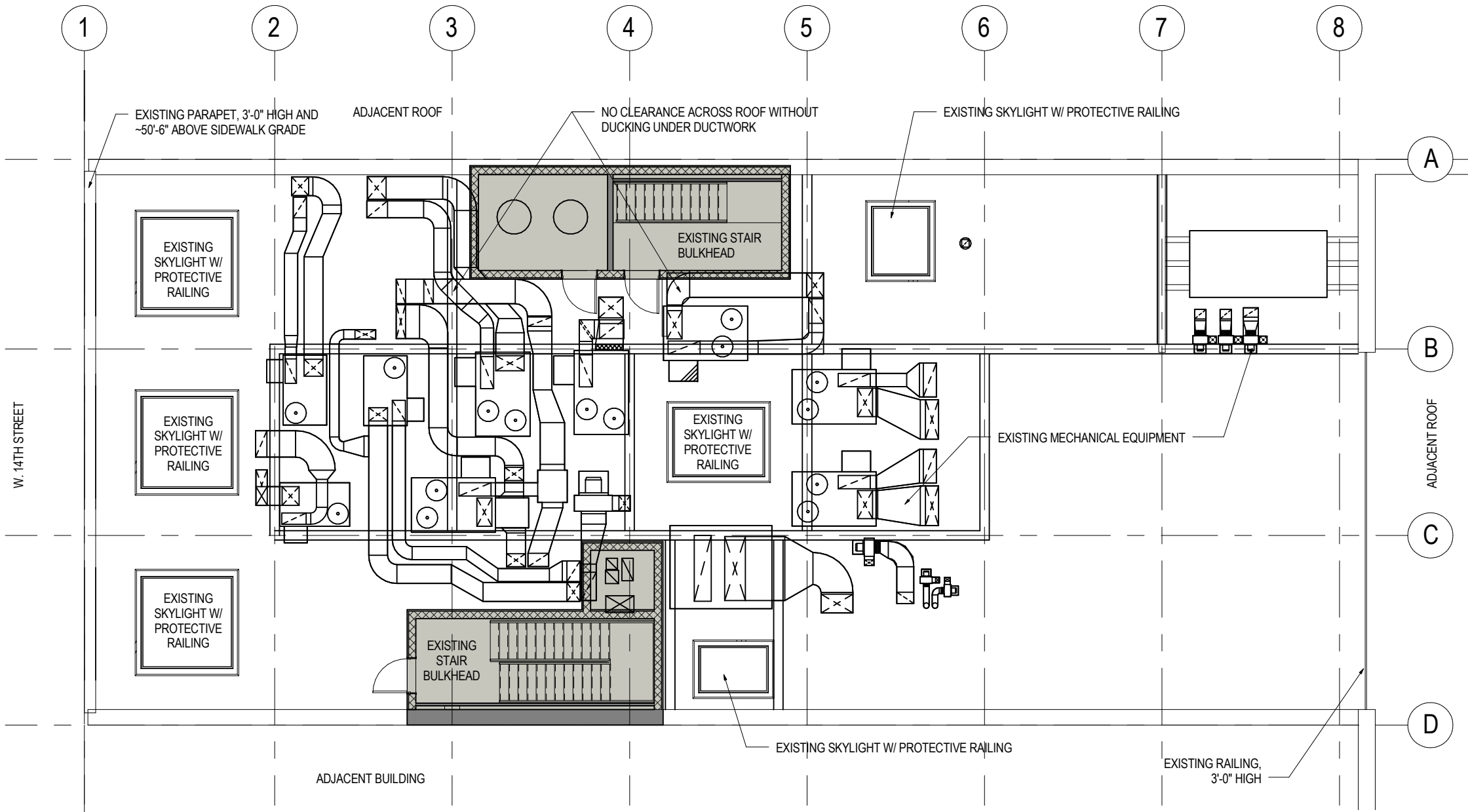
A	B	C
A Series		C Accessories
IVT101 Adjustable Wall Mount Cylinder		-TR 120/12V Electronic Transformer
B Finish ¹		
ST Brushed Stainless Steel		
BR Bronze Aluminum		
B Black Aluminum		
SU Surface ²		

Notes:
1. Custom powder coat finishes available, consult factory. Minimum order quantity apply.
2. See Surface² simulated natural finishes submittal sheet for specification.

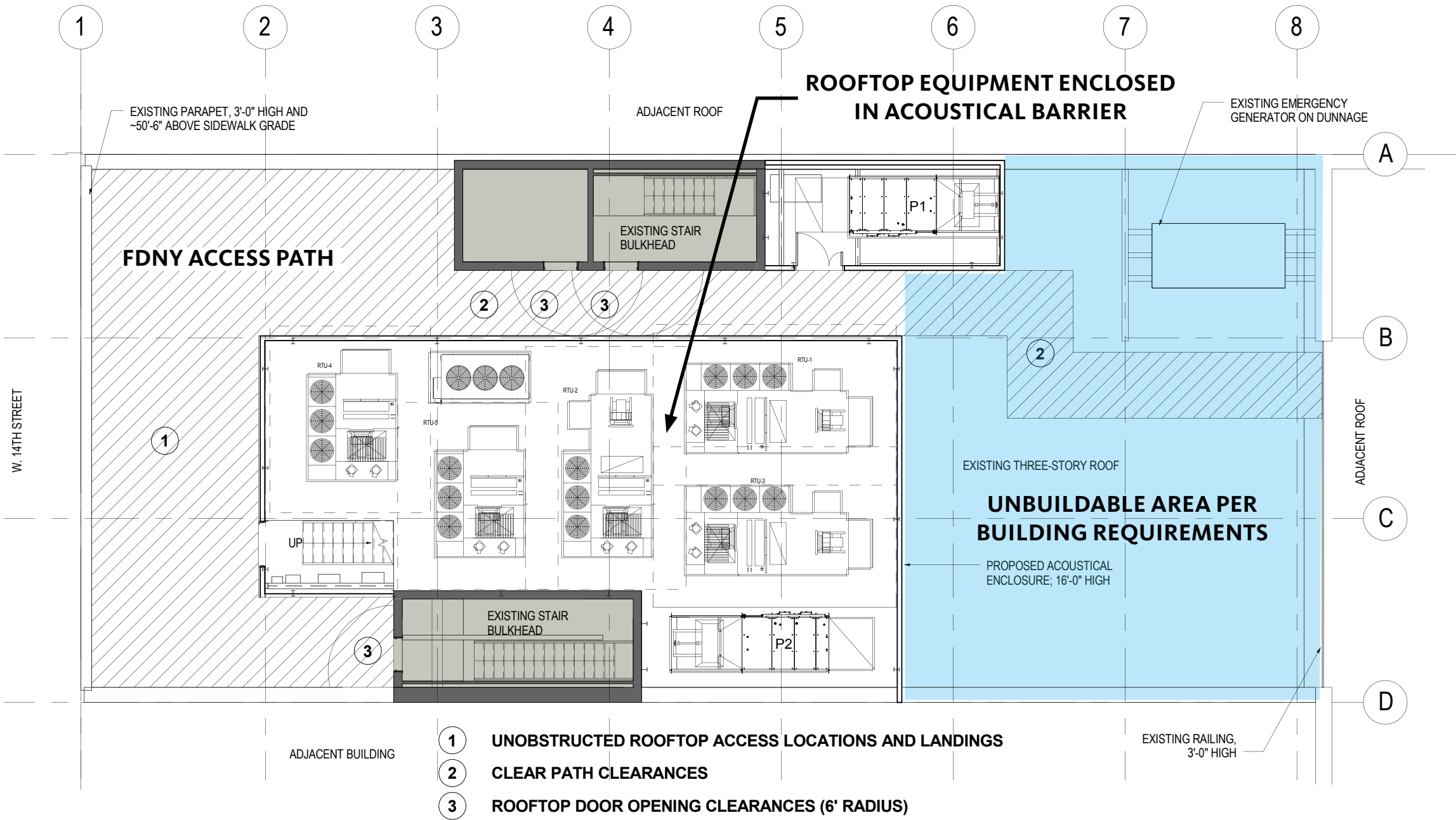
INTENSE

CANOPY MOUNTED DOWNLIGHT

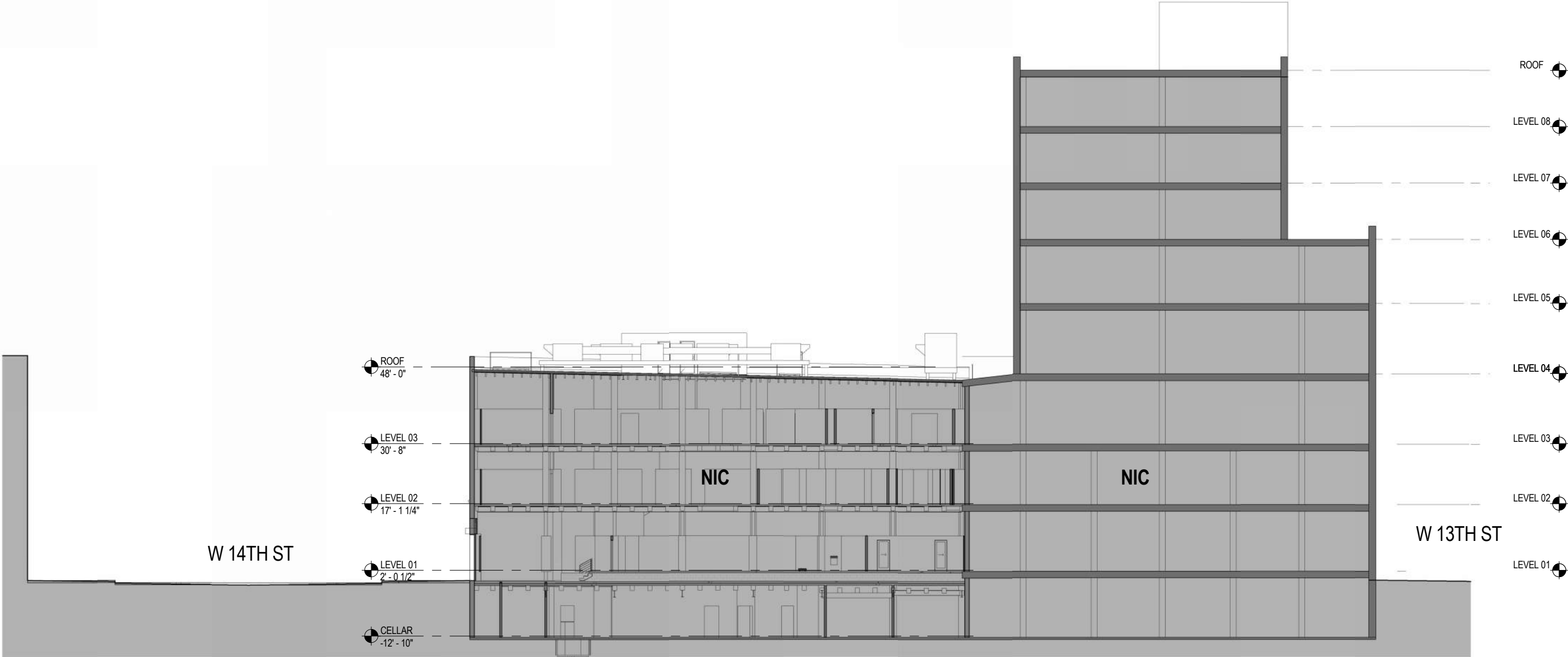
Existing Roof Plans



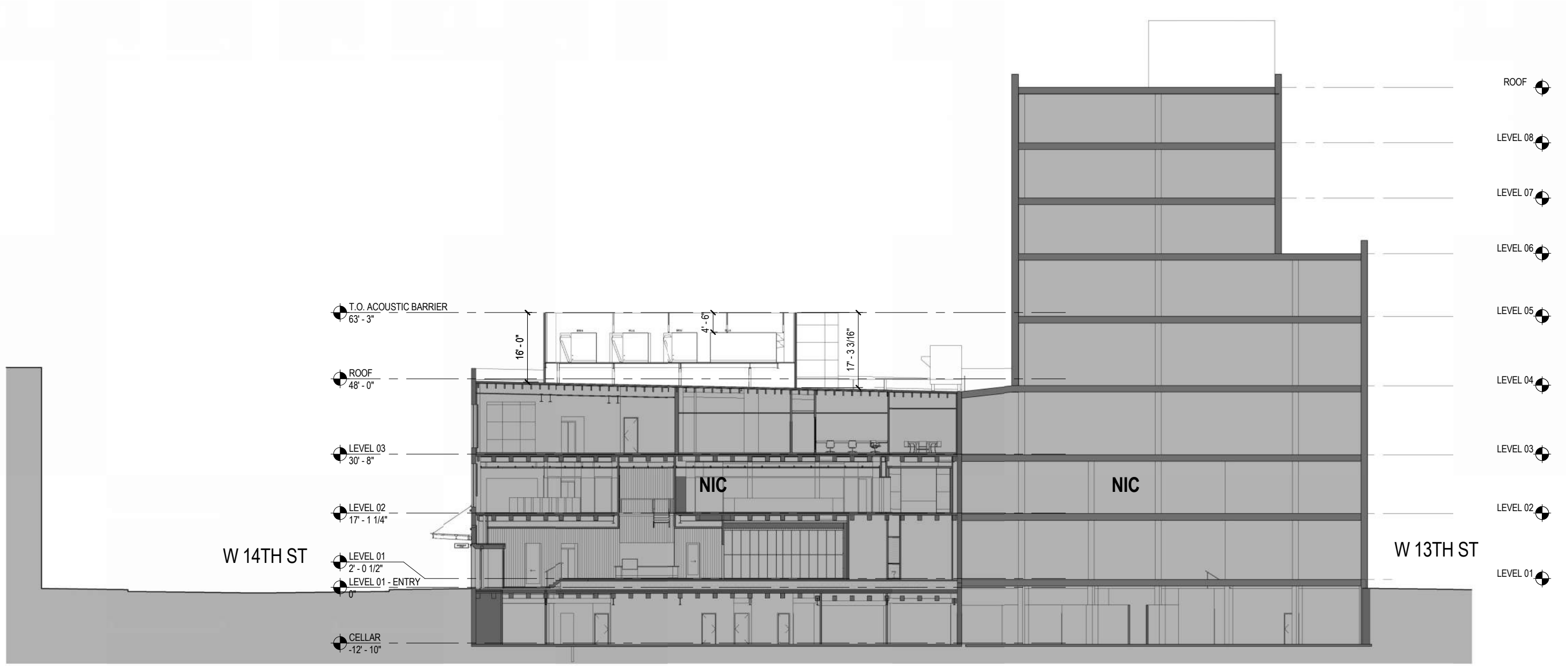
Proposed Roof Plan - Overview



Existing Building Section



Proposed Building Section



View - 14th Street and Ninth Avenue - Existing and Proposed



KEY PLAN

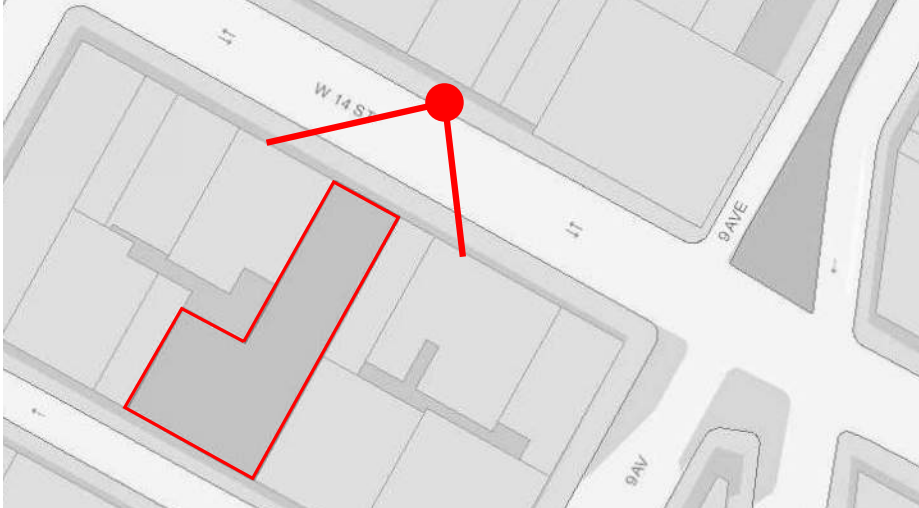


EXISTING VIEW



PROPOSED VIEW

View - Across 14th Street - Existing and Proposed



KEY PLAN



EXISTING VIEW



PROPOSED VIEW

