

XIV

TWENTY-NINTH ANNUAL REPORT
OF THE
DEPARTMENT OF PARKS
OF THE
CITY OF BROOKLYN,
1889.

Compliments of

GEORGE V. BROWER,

MARVIN CROSS,

CHARLES H. LUSCOMB.

COMMISSIONERS.

R. S. L. H. W. M.

TWENTY-NINTH ANNUAL REPORT

OF THE

DEPARTMENT OF PARKS

FOR THE

YEAR 1889.



BROOKLYN:

PRINTED FOR THE COMMISSIONERS.

1890.



PHOTO-GRAPHS CO. LONDON

View from proposed Park at Ridgewood. Garden City in distance.

COMMISSIONERS.

GEORGE V. BROWER,

MARVIN CROSS.

HENRY I. HAYDEN.

OFFICERS.

President,

GEORGE V. BROWER.

Secretary,

ROBERT COURTNEY.

Superintendent,

ANEURIN JONES.

COMMISSIONERS 1890.



GEORGE V. BROWER.

MARVIN CROSS,

CHARLES H. LUSCOMB.

REPORT
OF THE
DEPARTMENT OF PARKS.

DEPARTMENT OF PARKS.
Room No. 12, City Hall,
BROOKLYN, January 7, 1890. }

To the Honorable the Common Council:

GENTLEMEN :

In compliance with the terms of the Charter, the Commissioners of the Department of Parks hereby furnish your Honorable Body with a full report of their proceedings for the year 1889, embracing a detailed statement of their receipts and expenditures for that time.

The total amount available for Park purposes for 1889, outside of the \$500,000 appropriated by the Legislature in 1888, for new parks and improvements in and about Prospect Park, was \$443,186.65 ; of this amount, \$401,304.57 was voted by the Board of Estimate, \$9,500.00 by the Board of Supervisors of Kings County, \$3,800.00 by the Common Council for Sunday Music, and \$28,582.08 being balances over from 1888.

From this amount there has been paid out \$322,892.60, leaaving a balance in the City Treasury and the National City Bank of \$120,294.05.

Against this balance several contracts are outstanding, and others in the process of being made, which will absorb the greater portion of this balance.

Of the \$500,000.00 which was appropriated by the Legislature for park sites and for permanent improvements in and about Prospect Park, \$300,000.00 of this amount was, by a vote of the Commissioners, set aside for the purchase of new parks, and \$200,000.00 devoted to permanent improvements in and about Prospect Park.

Of the \$300,000.00 there has been expended up to this time for the purchase of property known as "Winthrop Park," \$133,678.00.

From the \$200,000.00 for improvements in and about Prospect Park, \$82,647.80 has been paid up to this time. This amount has been paid on account of contracts made and now outstanding for Entrances at the Park, Lullwater Bridge, Sentry Boxes, laying New Water Main, etc. There yet remain about \$44,000.00 to be paid on the completion of these contracts.

Nearly all the contracts for these improvements have been completed or are just on the point of completion.

There has been received during the year, for rental of Park privileges, sale of sheep, wool, old iron, etc., the sum of \$5,216.68. This amount has been paid to the City Treasurer and credited to Revenue Fund.

For the sales of 373 lots of the East Side lands, sold May 9, 1888, which sold for \$388,755.00. \$320,939.75 has been received in cash and bond and mortgages.

There are yet 57 lots unsettled for, which were bought by nine different purchasers. On these lots there is due \$67,815.25, or 90 per cent. of their purchase price.

There has also been received on account of sales made in 1881, \$6,052.50 in cash and bond and mortgages, for five lots purchased by three different parties at that time.

The following details of work done on the different parks, parkways, concourse, etc., have been extracted from a report furnished by the Superintendent.



PHOTO-GRVURE CO., N. Y.

VIEW OF DUCK ISLAND—PROSPECT PARK.

PROSPECT PARK.

A large portion of park labor, the year round, consists in daily care of drives, walks, lawns, basins, gutters, drains, trees, shrubbery, etc., including the removal of all debris which continually accumulates, consequent to the use of the park by its numerous visitors, anniversaries, picnics, parties, etc., which incurs daily expenditures in park maintenance. This work can be better imagined by referring to statistics which will appear later on.

The wet season of the year past greatly increased vegetation, which added much to the work of keeping the meadows and lawns under crop.

A more thorough and practical system of pruning than in vogue heretofore was inaugurated, and carried out with satisfactory results, producing a healthier condition and a more natural growth to trees and shrubs.

THE DRIVES.

With the exception of the West Drive, from Third street and Ninth avenue to nearly Fifteenth street, which was laid with broken limestone in the fall of 1888, the whole of the Park drives were in bad condition.

The South Drive from Ninth avenue and Fifteenth street to below its junction with the Centre Drive, was regraded and rolled, but owing to the loamy substance with which it has been formed, it required constant attention from the continual formation of ruts by rain.

From Third street, east to the Plaza entrance, hence to the lower end of Valley Grove, the whole drive has been picked, regraded and laid with double screened Roa Hook gravel thoroughly packed.

The east branch of the drives through the Valley Grove, which have been left since their formation without any gutters and basins to carry off the surface water, and always wet in consequence, has been raised from eight to ten inches on an average. Gutters were formed each side of the drive,

paved with Belgian blocks, forming basins in the same and connecting them by new drains with the proper park drainage. A base of broken stone was formed for the new drive, covering the same with double-screened gravel, the whole forming from Third Street and Plaza entrances to the junction of the drive leading from Willink entrance, a continuous, substantial, durable and pleasant drive.

The whole of the Park drives have been repaired and put in passable shape, but the continuance of regrading and graveling must be left for the incoming year's improvements.

A portion of the Bridle road leading from the Nethermead Circuit Drive to the Dairy Cottage has been opened for the use of vehicles. This will afford an opportunity for persons desiring to visit the Cottage to have their teams put under shelter and, at the same time, suitable persons provided to take care of the same. This improvement will supply to the driving public a long felt want, and accommodate a large number of ladies who, while out driving with their children, may want to stop at the Cottage for rest and refreshment.

PARK WALKS.

The dilapidated condition of the Park walks, which have been allowed for years to deteriorate, and patched up in places with a different kind and color of material in a most unsightly and unworkmanlike manner, has been generally commented upon and the need of a through renovation in the system of Walks was manifest.

The East Walk from below Battle Pass to the East Bridge of the meadow, and the walk from the Farm House across the meadow to the drive near Third street, has been laid with Trinidad Asphalt under contracts made last year.

A plant for the preparation of chemical composition and gravel for walks has been set up by the Department, at a cost, with its appurtenances of three thousand, four hundred and twenty-two dollars (\$3,422.00).



JOHN CHAMBERLAIN CO. N.Y.

A Nook on the Great Lake, Prospect Park.

Since the commencement of this work in August last, including resurfacing, digging up and carting away deteriorated materials of old walks, grading and laying of new walks, about 116,000 square feet of walks have been accomplished this season.

A new walk was formed continuing from Willink Entrance the east side of the drive, and crossing to meet the old walk west of the drive, to relieve the pressure of visitors to the Park on Concert days and Sundays.

PROSPECT PARK FLOWER GARDEN.

Owing to the dense shades and the roots of forest trees, many of the Rhododendrons and Calmias were destroyed. A few forest trees were removed, and the groups filled in with the same class of plants thinned from other portions of the Park where they were overcrowded and required thinning out. Other groups were formed to harmonize in detail with those existing. Many of the Ghent Azalias were in poor condition, owing to the want of proper attention to their soil and cultivation.

Those evils have been remedied and the groups filled in with their outlines clearly defined and planted with Ghent Azalias and Azalia Mollis in varieties. A few Hydrangea Paniculata Grandiflora were dotted here and there. Others were added to form groups. The herbaceous plants, consisting of Iris, Funkia and Hemorocalis in varieties, were overgrown. Their roots have been divided and planted in groups near the edge of the pond adjacent to the Boat-house.

A large group of Rhododendrons were remodelled surrounded with over 500 Japanese Lillies in varieties. Three rows of Gladiolus were planted in front, the remainder of the scroll filled in with General Grant Geraniums edged with Colieus Verschaffettii.

The many poor varieties of Roses that were remaining were removed and substituted with choice varieties of

Hybrid Perpetuals. A few smaller beds in this vicinity were filled in with choice bedding plants.

Two large specimens of *Lantana Borbonica* were planted in the centers of the large ornamental basins. The ground work was graded, panelled and planted in figures with *Altenantherias* and *Escheverias* in variety. The small vases surrounding the basins and fountain were planted with *Pandanus* and *Utilus* with small vines surrounding them.

The large vases were filled with tropical plants, consisting of *Phoenix reclinata*, *Areca Latescens*, *Chamerops Excelsa* *Crotons*, *Dracenas*, *Aspedistra* and *Vincas* in varieties. Two large figures were filled with succulent plants in various designs. The other beds were planted with choice collections of bedding plants to harmonize with their surroundings, and character of foliage and colors. The large vases at the Bridge inside the Garden were planted with *Agava Americana variegata*.

Since the summer flowers and plants have been removed, the majority of the beds have been filled with choice Hyacinth and Tulip bulbs in varieties. The beds not planted with bulbs have been prepared for Daises and Pansies in the Spring.

LITCHFIELD MANSION AND DAIRY.

A floral display of bedding plants were planted at the 'Litchfield Mansion' and the Dairy. These having been removed, their places have been filled in with bulbs for Spring ornamentation.

OLD FLOWER GARDEN.

The overcrowded *Rhododendrons* around the Old Flower Garden were thinned out and replanted in different places in the Park, in the formation of groups and the filling in of unfinished planting.

THE CITY PARKS.

TOMPKINS PARK.

The walks laid last winter having been affected by post displacing, the asphalt pavement and curbs, leaving the borders of the lawns in an unsightly condition, were all remedied. The grass sown in lawns the previous Fall having failed, the ground had to be dug up, cultivated and resown. The season has been beneficial for these lawns and the result satisfactory. There were a few flower beds which had been planted with inferior roses; these have been removed, the beds remodelled and a fine class of Hybrid Perpetuals planted in their places.

A few more designs were cut in order to improve the general appearance of the Park. Two large beds were formed and filled with *Canna Indica* in varieties. Other beds in the Park were formed and filled with *Saliras*, *Ageretums*, *Colieuses* and *Geraniums* in varieties. Three groups of *Hydrangea Paniculata Grandiflora* were formed near boundary lines of the different walks. Several dead trees were removed and others thoroughly cleared off of dead branches by judicious pruning, and carefully cleared of insects, cocoons, etc. The result of the above treatment is clearly shown in the present vigor of the trees.

The flower beds filled with summer flowering plants have been planted with *Hyacinth* and *Tulip* bulbs in varieties.

WASHINGTON PARK, (FORT GREENE).

In this Park a few beds of *Roses* were planted in different sections, the shrubbery judiciously pruned and dead and decaying limbs removed.

With sufficient labor the lawns have been kept in proper condition during the season, thereby showing the flowering shrubs to full advantage.

The flower beds near the Shelter were planted with *Canna Indica* edged with *Calladium esculentum*, and other beds were planted with *Alterentherias*, choice double *Geraniums*, *Colieuses* in varieties. Special care was taken to have all

planting to harmonize with the general features of the Park. After the summer plants were removed, Hyacinth and Tulip bulbs were planted in the different beds.

CITY PARK.

In the City Park, the flower beds were remodelled and planted with French Cannas, Salvias, Calladiums and other choice flowers in varieties.

The trees and shrubs were cultivated and all dead limbs removed.

The west and south-west walks in this Park were laid with Trinidad Asphalt pavement, as per contracts made the previous year.

Hyacinths and Tulip bulbs have been planted in the former flower beds, as in other Parks.

CITY HALL PARK.

After the repairing of the basin and the renovation of the fountain, this Park was planted with Tropical trees and plants to produce a summer effect, consisting of Lantanas in variety, Achania malvivicius and Hibiscis in varieties. These were grouped in different angles of the Park, and a new variety of French Cannas planted in the centres. The vases were filled with two specimens of Pandanas Vitchii, surrounding them with creeping vines and bedding plants.

CARROLL PARK.

This Park received the same attention as the other Parks, in the pruning of trees and shrubs, with the usual care of lawns, walks, etc.

The small triangular Parks throughout the City received the same required attention.

THE MECHANICAL DEPARTMENT.

This Department consists of the Carpentry, Joinery, Wheelwrighting, Masonry, Painting and Sign-lettering,

Blacksmithing and Horseshoeing, embracing all the artificers' work necessary in Park management.

In the Carpentry, besides the general repairs of buildings, the constant repairs to fences, etc., of Prospect Park and the City Parks, the Shelter on the east side of the Meadow was rebuilt. The sheds at the Farmhouse, which were in a dilapidated condition, repaired, and the railing and door to yard made new as well as new picket fences adjoining.

The Rolling Stock was kept in order with general attendance on all other trades, and the whole of the new and repaired work painted. The new Shelter east of the Meadow painted in party colors, together with the iron railings, crestings, roofs of buildings, vases of gardens, etc., etc.

The wood linings of the Bridges, underneath which had become mouldy by not having been cleaned since their erection, was washed off, thoroughly cleaned and given three coats of oil and varnish. The Pavilion at the Flower Garden, which has become rusty, was cleaned off and given one coat of paint in oil, for preservation through the winter, to be finished in the Spring.

FLAGGING OF FLOWER GARDEN.

The bluestone flagging of the Flower Garden was entirely relaid, substituting new flags for broken ones, in addition to general attendance on drains, basins, etc.

RUSTIC ARBOR.

The Rustic Arbor near the old Flower Garden, which had become dangerously dilapidated, was entirely rebuilt and the vines replaced.

Constant attention was paid to all hydrants, fountains and basins by the Plumbers, on whom depends principally the efficiency of the water service of the Department.

The new building for men and boys adjacent to the Boat-

house having been completed by contract, the walk leading thereto was laid with Asphalt blocks, the grounds around it graded, cultivated and planted with trees and shrubs.

NEW WORKSHOPS.

New Workshops of brick with stone dressings are being erected in Prospect Park at Seventh street and Ninth avenue.

The building will be 136 feet long by 40 feet wide, two stories. The first story to contain Blacksmiths', Wheelwrights' Implements and Rolling Stock Repair Shops. The second story to contain Carpenters', Painters' and Plumbers' shops, together with an office and store-room. The basement under the Wheelwrights' shop is intended for heating and steam power purposes.

GREENHOUSES AND PROPAGATING HOUSES.

The existing Propagating Houses were found to be inadequate to the requirements of the Department. As a first instalment to a thorough system of Greenhouses, four new Propagating Houses, 60 feet by 11 feet each, a new Palm House, 49 feet, 9 inches by 24 feet, 0 inches, and a renovation of the south greenhouses have just been completed, and which will enable us to propagate a large number of bedding and other plants for use in the various Parks, of a better quality and less price than we have heretofore purchased.

NEW NURSERY.

There being no Nursery in the Department, a Nursery is being formed south of the Greenhouses with a view of supplying Prospect Park and the City Parks with all necessary planting, as well as the new parks in anticipation.

NEW WATER-MAIN.

The old cement and iron water pipes for the water supply of Prospect Park having become corroded and constant

leakages occurring thereby, the repairs of which incurring great expense, in addition to the inconvenience of stoppage of water during repairs, a new six-inch cast iron water pipe, tested to 300 pounds per inch, is being laid in a trench four feet six inches deep, with valves and four-inch branches, where required, from opposite the Farmhouse on the east side to terminate at a valve near Gate 4, the lower end of the Park, consisting of about six thousand feet of water pipe.

THE INCREASE OF THE WATER SUPPLY.

A contract having been made with a view to increase the water supply of Prospect Park in the well one million gallons per day, four six-inch wells were driven thirty feet deep in the sand between the inside and outside curb of the well. All the necessary preparations having been made in pipes, connections and valves, on October 11th and 12th a test was made to determine the flow of water after twenty-four hours of pumping. The result was the delivery from the open wells of one million, three thousand, eight hundred and eighty-four (1,003,884) gallons of water. At the same time there was delivered from the open well by the main engine, five hundred and fifty-nine thousand, eight hundred and forty-six (559,846) gallons of water, showing a falling off of about two hundred thousand (200,000) gallons in the open well.

In order to recover this loss three four-inch pipes were driven twenty feet below the bottom of the open well, which brought a flow of about fifty gallons per minute from each pipe.

On December 7th a final test was made with the following result: Pumping was commenced at 9 A. M. from the open well and from the driven wells, which was continued for eight hours, delivering eighty-two thousand, five hundred and thirteen (82,513) gallons per hour, which in twenty-four hours would amount to one million, nine hundred and

eighty thousand, three hundred and twelve (1,980,312) gallons, being a clear gain of one million, one hundred and eighty thousand, three hundred and twelve (1,180,312) gallons in twenty-four hours.

OCEAN PARKWAY AND CONEY ISLAND CONCOURSE.

The disadvantage of a wet season caused an unusual amount of work to keep the Boulevard in tolerable condition.

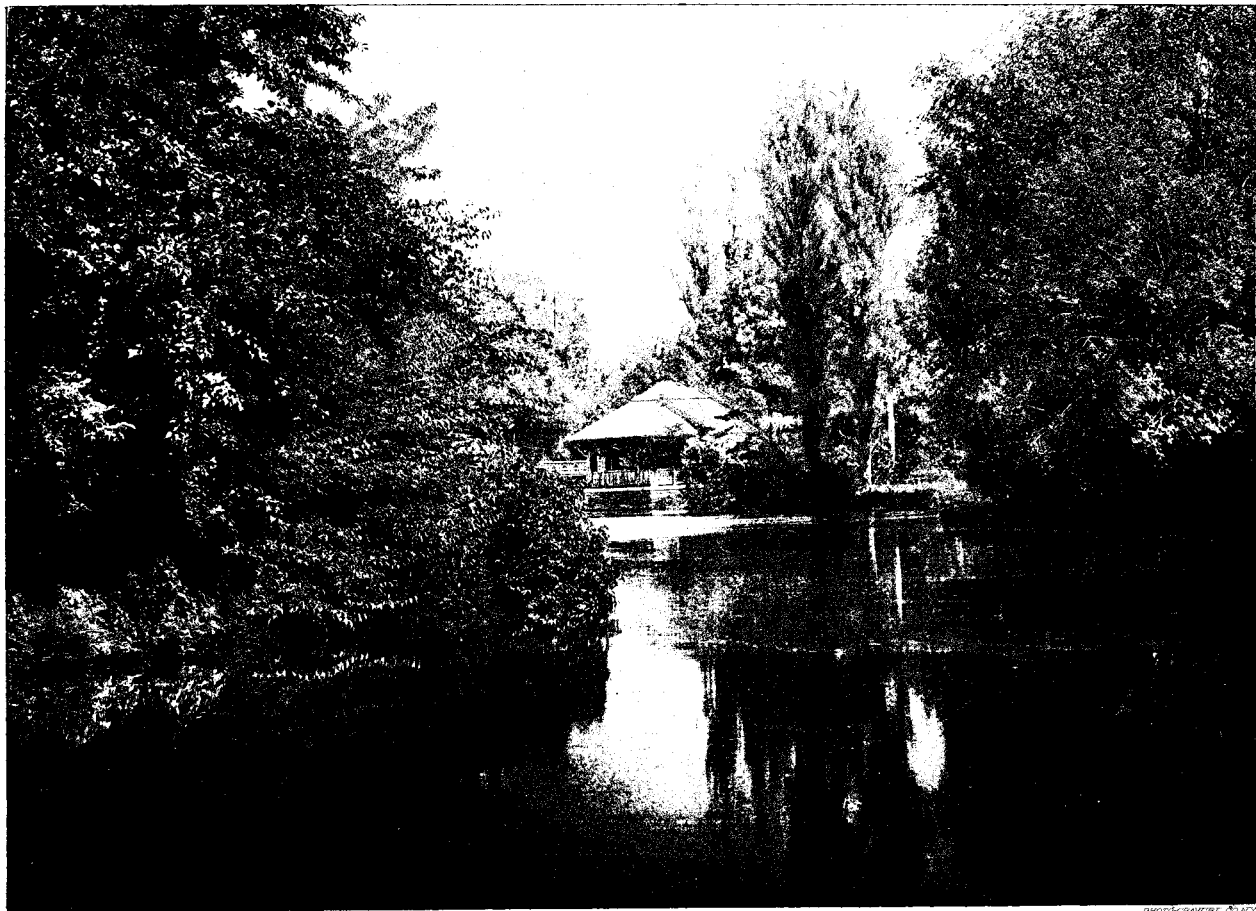
The gutters were cleaned from Prospect Park to the Coney Island Concourse. The watering and scraping of the drive was continually attended to, and upwards of one thousand truckloads of superfluous stuff was taken off the drive and hauled away.

The inadequate provisions for drainage and outlets for overflowing water have been remedied in several places by the cleaning out and opening of basins, together with the building of new cisterns to receive the water from the basins and soaked away through the gravel which heretofore had no outlet. The unusual wet weather having prevented the prosecution of this work, it is contemplated by the Department to have it completed next year.

The damage done by the Spring tides to the east end of the Concourse at Coney Island being irreparable the debris left was cleared away. The Shelters were repaired, and a gang of men under a foreman was kept through the Summer keeping the Beach and Concourse clean from the accumulation of debris brought in by every tide.

The heavy storm during the early part of September ruined the outer Shelter and destroyed nearly all the improvements placed thereon. All that could be saved that was perishable and liable to further injury was brought to Prospect Park to await such action as may be deemed necessary for next season.

The bridge over Coney Island Creek having become dangerous for travel the old girders and beams were replaced



PROSPECT PARK

On the Lake - A Shelter - Prospect Park.

by new ones and replanked, putting the whole in good condition for years.

EASTERN PARKWAY.

The drive of this Parkway has been repaired and the largest ruts filled in with broken stone and gravel, and the entire surface, from Bedford Avenue to the Plaza, has been resurfaced with gravel. The culverts have also been repaired, after having been damaged by the heavy rains.

The trees along the whole length of the Eastern Parkway have been cultivated and fertile soil placed around them. These trees had been allowed to grow in ugly forms; they have been pruned and trimmed, and the bark cleaned off of insects, cocoons, etc., which will restore the trees to a healthy and symmetrical form.

WORK IN PROGRESS.

Forty tons of ground bone fertilizer has been sown in the Meadows. The top dressing of grass along the drives has been completed, together with the composting of over one thousand loads of lime and soil compost, which has been spread on the Park during the Fall and Winter. All the shrubs are being trimmed and, where possible, new ones are being planted to take the place of old ones, and a thorough pruning of all the trees that are upon the drives and walks is now going forward.

PARADE GROUND.

The mowing and keeping of the grass and ground in order by rolling was constantly attended to in the Parade Ground.

A new range of turned locust posts, containing seventy-five in number, seven feet long each, was put in the lower end of the Parade Ground, replacing the old posts which had become rotten, with a chain put through the whole length. The posts were oiled and the chain painted.

The roofs of the buildings, together with the woodwork, were repaired, new steps were put to the house, the windows glazed and all the rooms painted and kalsomined.

There is a constantly increasing demand for more room for the various base-ball and other athletic associations, and increased toilet accommodations. On Saturdays and Sundays scarcely one-half of those applying can be properly accommodated.

In the general work of repairing and improving Prospect Park, the Commission have given considerable attention to the necessity for an increased water supply, and to that end have invited experts to examine the grounds and submit practicable plans whereby the supply may be increased to at least five millions of gallons per day. There is a great necessity for more water in order that the lakes may be purified, thereby making the Park healthful as well as beautiful.

From experiments made during the last Fall, while obtaining the present increase of an extra million of gallons per day, it was ascertained that at a distance of forty feet below the level of the present well there was a strata of coarse gravel containing pure water, seven and a-half degrees colder than the water in the present well, and this water seems to be in a practically unlimited quantity. Those who have made the experiments are so satisfied with the results that they are willing to enter into a contract with the Department, and agree that unless the full supply of five millions per day is secured they will waive any and all compensation.

In order to avail ourselves of this water it will be necessary to increase our pumping facilities by obtaining new engines and pumps; the present engine and pump have not sufficient capacity to deliver the water at present supplied by the well without being driven beyond their estimated duty.

The cost of obtaining an additional supply from this water-bearing strata will be less than from any other source in this vicinity, the one million extra gallons having been

obtained at a cost of about two thousand, seven hundred and fifty dollars. The cost of obtaining this water is a mere nominal amount, the only real cost being the new engine and pump.

This extra amount of water distributed through the Park and in the lakes would undoubtedly be the best means of purifying the stagnant waters now therein and render them healthful resorts.

As your custodians of this pleasure ground we deem it our duty to call your attention to this matter, and, through you, to the careful consideration of the public, that you and they may be prepared to give aid and assistance in a matter of so much importance to the health and beauty of the Park.

It is proposed to improve the Eastern Parkway, which in its present condition is a menace to all local improvements, and a disappointment to all its early projectors and friends, and which now stretches in a long arid waste from the Plaza of Prospect Park to City Line. Over two millions of dollars were spent in the original improvement, with the hope of making it one of the finest driveways in the country. There was something radically wrong in the manner in which the avenue was originally laid out, and after eighteen years but few signs of improvement are on or about it. It is hoped that legislation may be had the present session of the Legislature, whereby the avenue may be improved and made one of the most attractive in the world, and which would consist in filling in the present centre roadway and filling the same with top soil and planting with grass and shrubs, and walks for pedestrians, and widening the side drives on the north and south each ten feet. This would give two fine drives, each thirty-five feet wide, one on the north and the other on the south side, and form one continuous park in the centre for over three miles.

Examples of this treatment of a Boulevard, on a limited scale, are Eutaw street, Baltimore and Commonwealth avenue, Boston, which have proved the most inviting and

successful in either city. The majority of property owners along the route of the proposed improvement are willing to be assessed for the entire amount of centre roadway, upon the City bearing a fair portion of not less than fifty per cent., of the assessment for widening and making the side drives, as the said drives would become popular public roadways for pleasure driving. The ten feet proposed to be taken for widening the drives is a portion of thirty feet which by Act of Legislature, comprises the court yards on either sides; leaving a court yard of twenty feet still remaining, and which is more than is really necessary when the proposed improvements are completed. This will add materially to the taxable property of the City, and bring into market for permanent improvements a large section of the City which seems to have been paralyzed by the original assessment and has not yet received from its effects. All the expense to be borne by the City will not exceed the amount required to make and maintain the present neglected drive.

In addition to the proposed improvement of the present Parkway, it is proposed to extend the present Parkway in an avenue of about one hundred and twenty feet wide, upon and across such streets and lands as may be found best adapted for the purpose through the Twenty-sixth Ward, or partly along the high ground adjoining the City Line, and which will form a connection with the proposed new Park site at Ridgewood, in which his Honor, Mayor Chapin, has taken a deep interest. A bill has been prepared and presented to the present Legislature to secure the same.

The Boulevard, when finished, and connected with the Ridgewood Park, will form a drive and Parkway from Ridgewood through Prospect Park over the present Ocean Boulevard to the Kings County Concourse at the Ocean, a distance of over fifteen miles in length; also providing, in the future, for a continuation of the Boulevard to the proposed new Bridge over the East River, whereby Central

Park, New York, will eventually be connected with the Park system of Brooklyn.

This improvement, from Ridgewood to the Plaza of Prospect Park, will pass almost the entire distance upon the highest land in the City, from which some of the finest views of the Ocean and Bay are obtained, and is favored in the heat of summer with their refreshing breezes, and when finished, will, with the Ocean Boulevard, form a Park and driveway unequalled in the world.

PERMITS ISSUED FOR THE SEASON.

Lawn Tennis	350
Photographing	320
Sketching	100
Surplus Plants	140

Very respectfully yours,

GEO. V. BROWER,

President.

Financial Statement for the Year 1889.

CITY.

24

MAINTENANCE OF PARKS.

<i>Certified to the City Auditor :</i>		Appropriation for Maintenance of	
Expended for labor, police and		Parks.....	\$342,304 57
“ salaries.....	\$189,133 86	Balance from 1888.....	<u>10,937 03</u>
“ music	5,513 80		
“ gas and insurance ...	628 04		
“ resurfacing walks in			
Prospect Park and			
plant for same....	13,818 75		
“ electric lighting.....	6,014 00		
“ telephone service....	731 50		
“ supplies.....	32,579 01		
“ laying and repairing			
walks in Prospect			
Park, Washington			
Park, Tompkins Park			
and City Park by			
contract and other-			
wise.....	11,042 86		
“ cleaning Park Lake,			
(partially).....	3,149 53		
“ maintenance Washing-			
ton Park, Tompkins			
Park, City and			
other Parks.....	4,816 72		
“ plants, etc	3,043 55		
“ arbors, benches and			
seats.....	2,406 92		
Balance carried to credit of Main-			
tenance of Parks, 1890.....	80,363 06		
	<u>\$353,241 60</u>		<u>\$353,241 60</u>

REPORT OF THE

Financial Statement for the year 1889.—Continued.

CITY.

CONSTRUCTION OF ERECTIONS AND IMPROVEMENTS IN PROSPECT PARK.

<i>Certified to City Auditor :</i>				
Expended for repairing pump at well (contract).....	\$1,595 00		Appropriations for 1889.....	\$26 500 00
“ skylights at well, (contract).....	345 00		Balance from 1888.....	<u>13,014 63</u>
“ new walks, Prospect Park.....	2,500 00			
“ greenhouses and propagating houses, on account contract..	7,945 88			
“ labor and material for new workshops	1,453 04			
“ concert grove shelter, etc.....	349 39			
Balance carried to credit of Construction of Erections and improvements in Prospect Park....	<u>25,226 32</u>			
	<u>\$39,514 63</u>			<u>\$39,514 63</u>

MAINTENANCE OF OCEAN PARKWAY.

<i>Certified to City Auditor :</i>				
Expended for labor and policing...	\$13,888 57		Appropriation for 1889.....	\$22,500 00
“ supplies.....	1,021 21		Balance from 1888.....	<u>318 73</u>
Balance carried to credit of Maintenance of Ocean Parkway, 1890, .	<u>7,908 95</u>			
	<u>\$22,818 73</u>			<u>\$22,818 73</u>

DEPARTMENT OF PARKS.

Financial Statement for the year 1889.— Continued.

26

CITY.

MAINTENANCE OF EASTERN PARKWAY.

<i>Certified to City Auditor:</i>			
Expended for labor and policing..	\$5,612 50	Appropriation for 1889.....	\$10,000 00
“ supplies.....	1,626 09	Balance from 1888.....	2 01
Balance carried to credit of Main- tenance of Eastern Parkway for 1890.....	2,763 42		
	<u>\$10,002 01</u>		<u>\$10,002 01</u>

PARK SITE IMPROVEMENT FUND FOR SITES FOR SMALL PARKS.—Under Chap. 384, Laws of 1888.

<i>Certified to City Auditor:</i>			
Expended for land and buildings for		Appropriation (part of \$500,000) .	\$300,000 00
“ Winthrop Park....	\$132 825 00		
“ searching title.....	813 20		
“ map.....	39 80		
Balance carried to credit Park Site Improvement Fund for sites for small Parks, 1890.....	166,322 00		
	<u>\$300,000 00</u>		<u>\$300,000 00</u>

REPORT OF THE

Financial Statement for the year 1889.—Continued.

CITY.

PARK SITE IMPROVEMENT FUND, FOR PERMANENT IMPROVEMENTS IN AND ABOUT PROSPECT PARK.

Under Chap. 384, Laws of 1888.

<i>Certified to City Auditor:</i>			
Expended on	account of contracts		Appropriation (part of \$500,000) .. \$200,000 00
	for men's closets...	\$3,994 25	
"	account of contracts		
	for Lullwater Bridge	11,410 00	
"	account of contract		
	for granite sentry		
	boxes.....	3,500 00	
"	on account of con-		
	tract for Park En-		
	trances.....	52,300 00	
"	on account of Archi-		
	tecs' fees.....	3,350 52	
"	for Surveyor's fees...	163 83	
"	for windmill.....	600 00	
"	account of new water		
	main.....	7,329 20	
Balance carried to credit Park Site			
Improvement Fund, for perma-			
nent improvements in and about			
Prospect Park, 1890.....	117,352 20		
		<u>\$200,000 00</u>	<u>\$200,000 00</u>

Financial Statement for the year 1889.—Continued.

CITY.

SUNDAY MUSIC.

<i>Certified to City Auditor :</i>			
Expended for Sunday Concerts....	\$2,733 00	By appropriation by the Common	
“ Programmes.....	252 80	Council	\$3,800 00
Balance carried to credit of Sunday			
Music, 1890.....	814 20		
	<u> </u>		
	\$3,800 00		\$3,800 00

COUNTY.

MAINTENANCE OF CONCOURSE—CONEY ISLAND.

Expended for labor, policing, light-		Appropriated by the Board of Su-	
ing, etc.....	\$6,643 92	pervisors of Kings County and	
Balance carried to credit of main-		received from County Treasurer..	\$5,000 00
tenance of Concourse, Coney Is-		Balance from 1888.....	2,403 33
land, 1890	759 41		<u> </u>
	<u> </u>		\$7,403 33
	\$7,403 33		<u> </u>

MAINTENANCE AND CARE OF THE PARADE GROUND.

Expended for labor, policing, etc..	\$4,047 66	Appropriated by the Board of Su-	
Balance carried to credit of main-		pervisors of Kings County and re-	
tenance and care of the Parade		ceived from County Treasurer..	\$4,500 00
Ground, 1890.....	2,358 69	Balance from 1888.....	1,906 35
	<u> </u>		<u> </u>
	\$6,406 35		\$6,406 35

Financial Statement for the year 1889.—Continued.

Revenue derived from the Public Parks of the City of Brooklyn, and paid into the City Treasury for the year 1889, and credited to Revenue Fund.

Paid City Treasurer.....	\$5,216 68	From Rental of Privileges.....	\$4,800 00
		“ Sale of Sheep, Wool, etc....	416 68
	\$5,216 68		\$5,216 68

OFFICE DEPARTMENT OF PARKS, January 7th, 1890.

ROBERT COURTNEY,
Secretary.

DEPARTMENT OF PARKS.

DEPARTMENT OF PARKS,
OFFICE OF CHIEF CLERK AND PAYMASTER, }
BROOKLYN, N. Y., January 7th, 1890. }

ROBERT COURTNEY, Esq., *Secretary Department of Parks.*

SIR:

Herewith I beg leave to hand you detailed statement of labor, salaries and supplies, together with balance sheet of my department for the year 1889.

Yours respectfully,

CHAS. F. MOORE,

Chief Clerk and Paymaster.

Statement of Appropriations and Balances, 1889.

1889.			
Jan. 2—Appropriations and balances, City.	\$429,376 97	Labor, salary and police pay rolls, (less amount to Parksite improvement fund, \$3,226.69) City.....	\$213,953 90
Appropriations and balances, County.....	<u>13,809 68</u>	Labor and police pay rolls, County	8,192 84
		Supplies, music, gas, electric light, etc.....	\$82,249 52
		Supplies, etc., Ocean Parkway ...	1,021 21
		“ Eastern Parkway...	<u>1,626 09</u>
			84,896 82
		Construction of greenhouses, walk, skylight at well, etc.....	13,350 30
		Supplies, County	2,498 74
		Balance, City.....	117,175 95
		“ County.....	<u>3,118 10</u>
	<u>\$443,186 65</u>		<u>\$443,186 65</u>

DEPARTMENT OF PARKS.

E. & O. E.
PROSPECT PARK, January 5th, 1890.

CHAS. F. MOORE,
Chief Clerk and Paymaster.

Statement of Labor and Salary Pay Rolls, 1889.

32

1889.	CITY.	AMOUNT.	POLICE, ATTEND- ANTS, ETC.		LABORERS, At \$1.50 per day.		HIRED CARTS AND TEAMS.	SKILL'D LABORERS from \$4.50 per day to \$12.00 per week.		TOTAL.
			No.		No.			No.		
Jan. 15	Labor Pay Roll	No. 457.	\$5,950 78	63	\$1,987 93	52	\$830 05	114	\$3,132 80	\$5,950 78
" 31	" " " "	458.	6,574 76	63	2,104 31	54	963 08	114	3,507 37	6,574 76
Feb. 15	" " " "	459.	5,098 48	63	2,005 06	25	429 75	89	2,963 67	5,098 48
" 28	" " " "	460	4,338 17	63	1,709 67	24	356 00	90	2,272 50	4,338 17
Mar. 15	" " " "	461.	5,279 64	63	1,949 78	24	412 83	98	2,917 03	5,279 64
" 31	" " " "	462	6,126 23	61	2,013 01	46	741 13	115	3,372 09	6,126 23
Apr. 15	" " " "	463.	7,076 14	68	2,097 24	62	970 62	\$266 25 129	3,742 03	7,076 14
" 30	" " " "	464	7,853 21	73	2,275 94	73	1,181 83	597 00 131	3,798 44	7,853 21
May 15	" " " "	465	8,566 94	73	2,306 35	96	1,496 80	676 25 159	4,087 54	8,566 94
" 31	" " " "	466.	9,920 28	72	2,518 02	111	2,054 74	818 25 150	4,529 27	9,920 28
June 15	" " " "	467.	9,635 79	72	2,394 74	115	2,062 16	832 50 139	4,346 39	9,635 79
" 30	" " " "	468	10,032 71	83	2,606 45	115	2,054 09	1,046 50 139	4,325 67	10,032 71
July 15	" " " "	469.	9,506 87	80	2,557 97	114	1,979 97	882 50 137	4,086 43	9,506 87
" 31	" " " "	470.	10,793 45	80	2,728 80	114	2,272 67	905 25 141	4,886 73	10,793 45
Aug. 15	" " " "	471	9,236 10	80	2,538 78	118	1,801 21	746 25 144	4,149 86	9,236 10
" 31	" " " "	472.	11,387 27	80	2,737 20	134	2,612 33	1,200 50 148	4,837 24	11,387 27
Sep. 15	" " " "	473.	9,551 36	80	2,611 06	138	1,905 59	853 00 143	4,181 71	9,551 36
" 30	" " " "	474.	10,647 92	80	2,487 47	130	2,094 22	1,091 00 156	4,975 23	10,647 92
Oct. 15	" " " "	475.	10,661 37	80	2,524 47	135	2,509 02	1,066 50 155	4,561 38	10,661 37
" 31	" " " "	476.	11,678 99	80	2,675 66	149	2,646 91	1,210 50 165	5,145 92	11,678 99
Nov. 15	" " " "	477.	9,776 83	76	2,246 79	155	2,435 79	854 75 156	4,239 50	9,776 83
" 23	Supplementary	" 478.	666 59	12	322 64	135 00 38	208 95	666 59
" 30	Labor Pay Roll	" 479	8,593 59	76	2,382 19	129	2,039 55	339 25 138	3,832 60	8,593 59
Dec. 15	" " " "	" 480.	8,981 41	75	2,424 79	136	2,166 07	281 75 142	4,108 80	8,981 41
" 31	" " " "	" 481.	8,755 77	76	2,650 89	122	1,992 18	104 00 133	4,008 70	8,755 77
			\$206,690 65		\$56,534 57		\$40,331 23	\$13,907 00	\$95,917 85	\$206,690 65

REPORT OF THE

*Amounts Charged to Park Site Improvement Fund,
included in Statement Labor Pay Rolls.*

October 31	Pay Roll No. 476.....	\$411 06
November 15	" No. 477.....	493 75
" 30	" No. 479.....	550 76
December 1	" No. 480.....	772 50
" 31	" No. 481.....	998 62
		<hr/> \$3,226 69

Salary Pay Rolls, 1889.

January 31.....	\$723 32
February 28.....	783 32
March 31.....	898 32
April 30.....	898 32
May 31.....	898 32
June 30.....	898 32
July 31.....	898 32
August 31.....	898 32
September 30.....	898 32
October 31.....	898 32
November 30.....	898 32
December 31.....	898 32
	\$10,489 84

Recapitulation—Services, 1889.

Total amount paid for Police.....	\$56,534 57
“ “ “ for Laborers.....	40,331 23
“ “ “ for Skilled Laborers.....	95,917 85
“ “ “ for Hired Teams.....	13,907 00
“ “ “ for Salaries.....	10,489 84
	<hr/>
	\$217,180 49

CHAS. T. MOORE,

Chief Clerk and Paymaster.

Park Site Improvement Fund—(Improvements in and about Prospect Park).

1889.			
Appropriation for Improvements in and about Prospect Park (part of \$500,000)	\$200,000 00	* Amount expended for Improvements in and about Prospect Park	\$82,647 80
		Balance	117,352 20
	<u>\$200,000 00</u>		<u>\$200,000 00</u>

* See Secretary's Report.

E. & O. E.
PROSPECT PARK, Jan. 5th, 1890.

CHAS. F. MOORE,
Chief Clerk and Paymaster.

Park Site Improvement Fund—(For Sites for Small Parks.)

1889.			
Amount appropriated for Purchase of Sites for Small Parks (part of \$500,000)	\$300,000 00	* Amount expended for purchase of site for Winthrop Park, Surveys, etc.	\$133,678 00
		Balance	166,322 00
	<u>\$300,000 00</u>		<u>\$300,000 00</u>

* See Secretary's Report.

E. & O. E.
PROSPECT PARK, Jan. 5th 1890.

CHAS. F. MOORE,
Chief Clerk and Paymaster.

Supplies, Music, Gas, Electric Light, etc., 1889.

January 23..	J. H. Temple, services.....	\$25 00
	Thomas R. McCann, walks.....	2,454 47
	Oakley & Smith, horses.....	250 00
	Oakley & Smith, horses.....	240 00
	Oakley & Smith, horses.....	200 00
	American District Telegraph Co., service.....	14 55
	J. M. Bullwinkle, stationery.....	194 24
	Siemens Jangren Co., lamps.....	28 00
	Alice M. Stobe, typewriting.....	4 45
	N. Y. & N. J. Telephone Company, services.....	47 00
	Joseph C. Hendrix, P. M., stamps.....	15 00
	N. Y. & N. J. Telephone, police telephone.....	500 00
	A. B. Wood & Son, boat.....	89 50
February 6..	J. H. Temple, services.....	30 00
	Chas. F. Moore, disbursements.....	7 30
	J. F. Tormey, disbursements.....	4 89
	H. D. Stiles, medicines.....	14 95
" 7..	George G. Martin, printing.....	100 00
	S. Oakley, carriage hire.....	38 00
	E. R. Shipman, provender.....	83 42
	E. R. Shipman, provender.....	75 46
	E. R. Shipman, provender.....	35 92
	E. R. Shipman, provender.....	23 00
	C. W. Keenan, paints.....	22 44
	C. W. Keenan, painters' supplies.....	31 10
	C. W. Keenan, shellac.....	6 80
	N. Lane's Sons, stationery.....	21 75
	N. Lane's Sons.....	11 25
	N. Lane's Sons.....	129 83
	Cranford & Valentine, walks.....	1,362 98
	J. Norwood, Gal. wire.....	13 50
	A. Lazansky, supplies.....	3 50
	Goodyear Rubber Company, boots.....	21 63
	Joseph Ruppert, hardware.....	111 24
	Haggerty & Co., naphtha.....	41 37
	George D. Kimber & Son, plumbing.....	4 75
	Beers & Ressigue, lumber.....	188 06
	Geo. P. Chappell, services.....	75 00
	M. May, oats.....	273 00
	M. A. McNamara, disbursements.....	9 63
	Metropolitan Gaslight Co., gas.....	33 76
	Nelson Bros., Coal.....	425 00
	Robert Courtney, office disbursements.....	32 23
	A. H. Hewes, flower pots.....	80 80
	Samuel W. Cornell, hardware.....	91 97
	Leonard & Ellis, oil.....	52 00
	E. A. Boyd & Son, glass.....	26 64
	Thomas T. Knight, frames and glass.....	10 00
	Citizens Electric Illuminating Co., electric light.....	465 00
Feb. 11..	Ronalds & Co., plumbers' supplies.....	1 37
" 20..	J. H. Temple, services.....	30 00
" 21..	H. R. Asserson.....	36 75
	William Forker, services.....	9 00
March 8..	Chas. F. Moore, disbursements.....	5 30

Supplies, 1889—Continued.

March	8..	H. D. Stiles, disbursements	\$13 05
		M. A. McNamara, disbursements.	7 65
		Joseph F. Tormey, disbursements.	5 30
		E. R. Shipman, provender	16 00
		E. R. Shipman, provender	74 46
		E. R. Shipman, provender	214 51
		E. R. Shipman, provender	74 58
		E. R. Shipman, provender	88 81
		Haggerty & Co., oils	30 42
		Haggerty & Co., oils	41 54
		Haggerty & Co., oils	40 76
		Town of Gravesend	8 10
		C. W. Keenan, alcohol	24 25
		C. W. Keenan, drawing paper	6 00
		C. W. Keenan, varnish	10 36
		Colegate & Co., soap	15 83
		T. W. Jefferson, map	16 00
		Metropolitan Gas Light Co., gas	32 48
		M. May, oats	29 25
		Hansen Bros., services	42 00
		American District Telegraph Co., service	19 55
		F. Booss & Bro., robe	27 00
		Bartlett Street Manufacturing Co., lamps	164 20
		A. H. Hewes & Co., flower pots	16 80
		Higginum Mfg Corporation, rakes	12 00
		Beers & Resseguie, lumber	49 40
		J. M. Thorburn & Co., seed	20 35
		H. A. Noble, supplies	22 50
		Brooklyn Impt. Co., dockage	10 00
		Wm. Porter's Sons, lanterns	74 85
March	20..	May G. Hamilton, services	9 32
		Timothy Gavan, use of derrick	50 00
		H. R. Worthington, painting engine	13 88
		A. M. Stobe, typewriting	4 25
"	22..	C. F. Moore, petty cash fund	100 00
		C. F. Moore, disbursements	36 39
April	4..	Harris & McGuire, hauling stones	171 00
		S. Oakley, carriage hire	20 00
"	6..	E. R. Shipman, provender	76 25
		E. R. Shipman, provender	96 00
		E. R. Shipman, provender	7 50
		E. R. Shipman, provender	3 75
		H. Goetz, harness supplies	11 00
		Nelson Bros., coal	240 75
		J. Ruppert, iron	68 35
		Liebman Bros. & Owens, towels	15 00
		Nathan Lane's Sons, stationery	4 75
		J. P. Rappalye, stationery	53 00
		Citizens Electric Illuminating Co., electric light	465 00
		Ronalds & Co., plumber's material	2 25
		Ronalds & Co., plumber's material	1 25
		W. H. Ammermann, linament	6 00
		Wyckoff, Seaman & Benedict, typewriting supplies	4 90
		Wyckoff, Seaman & Benedict, typewriting supplies	3 70

Supplies, 1889—Continued.

April	6..	Calvin Tompkins, limestone.....	\$130 50
		Calvin Tompkins, limestone.....	155 00
		C. W. Keenan, painters' supplies.....	35 10
		C. W. Keenan, painters' supplies.....	2 20
		Metropolitan G. L. Co., gas.....	36 80
		J. Norwood, barbed wire.....	75 00
		Whittier Machine Co., gates.....	25 60
		A. D. T. Co., service.....	14 55
		N. Y. & N. J. Telephone Co., service.....	49 20
		Goodyear Rubber Co., hose.....	50 00
		Haggerty & Co., naptha.....	41 21
		Ronalds & Co., supplies.....	2 64
		S. O. Burnett, oil cans.....	2 88
		S. O. Burnett, grate.....	2 00
		S. O. Burnett, claw hammers.....	2 40
		S. O. Burnett, repairs stove.....	2 80
		S. O. Burnett, sash cord.....	6 09
		S. O. Burnett, thermometers.....	2 60
		S. O. Burnett, snow shovels.....	10 10
		S. O. Burnett, lamp shears.....	3 95
		S. O. Burnett, sash chain.....	33 15
		S. O. Burnett, cotton waste.....	9 50
		S. O. Burnett, shovels and barrow.....	20 60
		S. O. Burnett, hardware.....	9 30
		S. O. Burnett, wire.....	4 50
		C. T. Reynolds & Co., paints.....	212 43
		C. T. Reynolds & Co., painter's supplies.....	10 38
		C. T. Reynolds & Co., varnish.....	6 13
April	17..	M. A. McNamara, disbursements.....	11 89
		W. H. Coughlin, services.....	150 00
May	8..	J. R. Hennessy, disbursements.....	12 63
		T. R. McCann, walks.....	195 88
		T. R. McCann, walks.....	69 90
		Wellington M'f'g Co., burners.....	108 80
"	11.	Wyckoff, Seaman & Benedict, typewriter.....	25 00
		C. W. Keenan, fitches.....	1 00
		M. A. McNamara, gloves.....	16 92
		Thomas T. Knight, picture frames.....	8 00
		Photogravure Co., maps.....	50 00
		Metropolitan G. L. Co., gas.....	30 08
		Chas. F. Moore, disbursements.....	68 75
		E. R. Shipman, provender.....	234 94
		E. R. Shipman, provender.....	96 00
		E. R. Shipman, provender.....	74 00
		E. R. Shipman, provender.....	3 42
		Brooklyn Citizen, printing.....	30 00
		Nelson Bros., coal.....	72 00
		H. R. Asserson, services.....	22 50
"	16..	F. E. McAllister, grass seed.....	180 00
		F. E. McAllister, grass seed.....	225 00
		S. O. Burnett, cases and measures.....	24 10
		S. O. Burnett, brooms and rakes.....	86 20
		S. O. Burnett, blacking brushes.....	13 85
		S. O. Burnett, saw handles.....	1 90

Supplies, 1889—Continued.

May	16..	S. O. Burnett, copper wire.....	\$8 75
		S. O. Burnett, brass locks.....	1 88
		Beers & Ressegue, lumber.....	68 52
		Bess & Ressegue, lumber.....	131 60
		C. T. Reynolds & Co., glass.....	28 65
		C. T. Reynolds & Co., tape measures.....	11 50
		C. T. Reynolds & Co., oil.....	23 20
		A. H. Hewes, flower pots.....	70 00
		Goodyear Rubber Co., boots.....	52 27
		J. Norwood, staples.....	9 00
		S. O. Burnett, horseshoe nails.....	15 95
		Higganum Corporation, lawn mowers.....	190 00
		Higganum Corporation, hoes.....	23 90
		C. T. Reynolds & Co., glass.....	7 17
		C. T. Reynolds & Co., supplies.....	12 06
		S. O. Burnett, repairs lawn mowers.....	121 88
		Nelson Bros., coal.....	84 00
June	5..	Knutt Fosberg, services.....	48 00
		Knutt Fosberg, services.....	56 00
		Chas. F. Moore, disbursements.....	70 63
“	8..	S. O. Burnett.....	30 80
		S. O. Burnett, horseshoe iron.....	52 00
		S. O. Burnett, cotton rope.....	3 47
		S. O. Burnett, sheep shears.....	3 50
		S. O. Burnett, nails.....	21 25
		S. O. Burnett, jail locks.....	2 00
		Raswell Eldridge, Jr., locust posts.....	132 00
		Raswell Eldridge, Jr., locust posts.....	160 00
		Raswell Eldridge, Jr., locust posts.....	56 00
		Brooklyn Citizen, printing.....	6 50
		G. F. Miller, supplies.....	16 80
		A. M. D. T. Co., Messengers.....	16 00
		E. R. Shipman, provender.....	80 09
		W. L. Glidden, scaffolds.....	31 77
		Bartlett Street Lamp Company, lamps.....	6 00
		Metropolitan Gas Light Co., gas.....	29 60
		Louis D. Beck, gravel.....	246 84
		Louis D. Beck, gravel.....	225 38
		Louis D. Beck, gravel.....	198 00
		Louis D. Beck, gravel.....	211 20
		John Morton Sons, hard brick.....	46 24
		John Morton Sons, hard brick.....	39 50
		John Morton Sons, hard brick.....	60 74
		Higganum Mfg. Corporation, pails and dippers.....	30 86
		Higganum Mfg. Corporation, scythes.....	51 50
		Higganum Mfg. Corporation, garden barrows.....	9 07
		Higganum Mfg. Corporation, grass hooks.....	23 00
		Higganum Mfg. Corporation, hay tedder.....	67 25
		Higganum Mfg. Corporation, pitch forks.....	10 00
		Higganum Mfg. Corporation, spades and rakes.....	59 90
		Higganum Mfg. Corporation, brooms and handles.....	13 00
June	10..	Fullerton & Anderson, supplies.....	169 00
		Fullerton & Anderson, supplies.....	23 65
		Fullerton & Anderson, hose couplings.....	31 20

Supplies, 1889—Continued.

June	10..	Haggerty & Co., naphtha	\$40 80
		J. Henry Haggerty, naphtha.....	71 57
		J. Henry Haggerty, naphtha.....	40 96
		J. Henry Haggerty, oil.....	31 44
		Goodyear Rubber Co., garden hose	75 00
		Goodyear Rubber Co., garden hose.....	52 50
		Ronalds & Co., rose spray	4 60
		Ronalds & Co., water pipe	38 79
		Ronalds & Co., grates	5 45
		Ronalds & Co., supplies.....	38 74
		S. O. Burnett, nails	32 00
		S. O. Burnett, rope	2 16
		S. O. Burnett, screws	8 00
		S. O. Burnett, pails	9 50
		S. O. Burnett, supplies.....	2 98
		S. O. Burnett, supplies	38 35
		S. O. Burnett, double enders.....	9 98
		E. R. Shipman, provender.....	142 35
		A. Raymond & Co., police clothing.....	240 00
		C. T. Raynolds & Co., supplies.....	27 10
		W. G. Pearson, drain pipe	71 65
		Nathan Lane's Sons, stationery	10 75
		Adrance Platt & Co., mowers.....	86 50
		Citizens' Electric Illuminating Co., electric light.....	450 00
		John M. Crotty, toilet paper.....	31 52
		C. C. Adams, police badge.....	20 00
"	11..	F. N. Ennis, music	205 00
		L. Conterno & Sons, music.....	110 00
		L. D. Beck, gravel.....	242 88
		L. D. Beck, gravel.....	236 28
"	13..	C. C. Martin, services.....	100 00
"	14..	H. R. Assesson, services	18 70
"	17..	L. Conterno & Sons, music.....	105 00
		F. N. Ennis, music.....	110 00
		Knutt Forsberg, services.....	48 00
		L. D. Beck, gravel.....	224 40
		L. D. Beck, gravel	219 12
		Thos. F. Fitkin, leather	12 00
		A. Raymond & Co., clothing, Police	176 00
		T. R. McCann, paving walks.....	887 35
		Harris & McGuire, hauling gravel	190 90
		Harris & McGuire, hauling gravel	185 50
		Harris & McGuire, hauling gravel	184 00
		Harris & McGuire, hauling gravel	172 50
		Harris & McGuire, hauling gravel	196 08
		Harris & McGuire, hauling gravel	211 60
		Harris & McGuire, hauling gravel	205 85
		Harris & McGuire, hauling gravel	215 05
		Ronalds & Co., plumbers' supplies.....	25 12
July	2..	Chas. F. Moore, disbursements.....	76 07
		John Carberry, mowing horse.....	37 50
		John Carberry, mowing horse	67 50
		S. Oakley, carriages.....	23 00
		Knutt Forsberg, services.....	48 00

Supplies, 1889--Continued.

July	5..	Citizens' Electric Illuminating Co., electric light....	\$418 00
		Citizens' Electric Illuminating Co., electric light....	521 00
		National Iron Fence Co., wire fence.....	234 00
		National Iron Fence Co., post.....	145 80
		National Iron Fence Co., wire fence.....	234 00
		National Iron Fence Co., wire fence.....	175 19
		National Iron Fence Co., wire fence.....	234 00
		National Iron Fence Co., wire fence.....	234 00
		National Iron Fence Co., wire fence.....	208 80
		National Iron Fence Co., wire fence.....	237 28
		National Iron Fence Co., posts.....	212 40
		National Iron Fence Co., extra work.....	20 00
		Harris & McGuire, hauling gravel.....	182 85
		Harris & McGuire, hauling gravel.....	184 00
		Harris & McGuire, hauling gravel.....	195 50
		Harris & McGuire, hauling gravel.....	184 00
		Harris & McGuire, belgian blocks.....	235 60
		Harris & McGuire, belgian blocks.....	238 00
		Peter Henderson & Co., flowers and plants.....	140 75
		Peter Henderson & Co., flowers and plants.....	193 00
		N. Y. & N. J. Telephone Co., service.....	50 15
		H. Goetz, harness supplies.....	39 00
		Metropolitan Gas Light Co., gas.....	30 56
		A. Raymond & Co., clothing, Police.....	118 00
		L. D. Beck, gravel.....	211 20
		L. D. Beck, gravel.....	224 40
		C. T. Reynolds & Co., supplies.....	3 00
		L. Conterno & Sons, music.....	205 00
		C. W. Keenan, supplies.....	8 30
		C. W. Keenan, oil.....	5 50
		F. N. Ennis, music.....	205 00
		F. N. Ennis, music.....	110 00
		N. Lane's Sons, time books.....	17 73
		C. T. Reynolds & Co., oil finish.....	3 35
		C. T. Reynolds & Co., liquid dryer.....	4 25
		C. T. Reynolds & Co., whiting.....	45 05
		W. G. Pearson, pipe.....	128 20
		Peter Henderson & Co., flowers.....	105 75
		Peter Henderson & Co., plants.....	301 65
		Fullerton & Anderson, lead pipe.....	21 32
		Young & Elliott, seeds.....	155 90
		Chas. Zeller, plants.....	10 00
		H. Goetz, leather.....	9 00
		J. H. Haggerty, naphtha.....	41 13
		J. H. Haggerty, naphtha.....	28 33
		Ronalds & Co., valves.....	23 87
		Leonard & Ellis, oil.....	29 40
		American District Telegraph Co., services.....	25 90
		N. Lane's Sons, stationery.....	4 75
		Higginum Mfg Corporation, mowing machines.....	5 00
		Chadborn & Caldwell, horse mower.....	140 00
		Chadborn & Caldwell, lawn mowers.....	280 00
		J. Ruppert, spokes and butts.....	34 20
"	10..	H. Assenbach, axle grease.....	23 00

Supplies, 1889—Continued.

July	10..	E. R. Shipman, provender	\$68 00
		E. R. Shipman, provender	21 00
		E. R. Shipman, provender.....	217 61
		Young & Elliott, plants	210 00
		Young & Elliott, flowers	227 50
		Young & Elliott, flowers.....	237 50
		Whitman Saddle Co., saddles	67 80
		Fallesen & Berry, painting and repairing sprinklers	210 00
		Fallesen & Berry, painting and repairing sprinklers.....	205 00
		A. Wilkie, carriage repairs.....	49 50
"	15..	Beers & Ressegue, lumber	1,145 60
		J. Ruppert, hardware	158 61
		Nelson Bros., coal	83 75
"	19..	J. M. Bullwinkle, stationery.....	28 60
		L. Conterno & Sons, music.....	110 00
		L. Conterno & Sons, music.....	200 00
		G. W. Rogers, printing.....	7 50
		Knutt Forsberg, service	48 00
		F. N. Ennis, music.....	115 00
		F. N. Ennis, music.....	210 00
		F. N. Ennis, music	216 00
		F. N. Ennis, music.....	210 00
		F. N. Ennis, music.....	110 00
		W. H. Miller, sprinklers.....	1,200 00
		Pennsylvania Railroad Co., freight.....	52 00
		Thomas Cassin, cushion.....	5 00
		Wm. Wall's Sons, bunting.....	40 50
		H. Assenbach, harness supplies	20 00
August	7..	Thomas L. Carpenter, services.....	21 00
		F. N. Ennis, music.....	110 00
		F. N. Ennis, music.....	211 00
		F. N. Ennis, music.....	216 00
		Cranford & Valentine, walks.....	4,627 05
		Knutt Forsberg, services	48 00
		Charles F. Moore, disbursements	77 20
		Nelson Bros., coal.....	346 50
		Harris & McGuire, carting gravel	435 85
		Harris & McGuire, Belgian blocks	251 15
		S. Oakley, carriage hire.....	8 00
		L. Conterno & Sons, music.....	210 00
		E. R. Shipman, provender	66 00
		E. R. Shipman, provender.....	23 25
		E. R. Shipman, provender.....	68 00
		L. D. Beck, gravel.....	238 92
		L. D. Beck, gravel.....	227 04
	8..	S. O. Burnett, brushes	3 25
		S. O. Burnett, files	31 59
		S. O. Burnett, tacks	2 34
		S. O. Burnett, springs.....	2 70
		S. O. Burnett, hardware	16 50
		S. O. Burnett, brushes	23 50
		S. O. Burnett, springs.....	13 75
		S. O. Burnett, locks.....	4 00
		S. O. Burnett, tape lines	19 50

Supplies, 1889—Continued.

August	8..	S. O. Burnett, rope.....	\$11 22.
		S. O. Burnett, supplies	1 05
		Fullerton & Anderson, closet bolts.....	74 53
		Fullerton & Anderson, pipe.....	362 16
		Fullerton & Anderson, pipe.....	25 36
		Higganum Mfg Co., forks and rakes	47 15
		Higganum Mfg Co., steel brooms.....	40 00
		Higganum Mfg Co., barrows.....	36 00
		Citizens' Electric Illuminating Co., electric light....	568 00
		Citizens' Electric Illuminating Co., electric light....	588 00
		Fulton Printing and Stationery Co., stationery ...	8 50
		Fulton Printing and Stationery Co.....	5 00
		J. Carberry, mowing horse.....	37 50
		J. Carberry, mowing horse.....	22 50
		J. L. Mott Iron Works, vases.....	56 00
		N. Y. Coal Tar Co., tar and oil.....	320 32
		N. Y. Coal Tar Co., tar and oil.....	45 40
		Beers & Ressegue, lumber.....	109 50
		Beers & Ressegue, lumber.....	553 33
		W. F. Douglass, oil.....	4 35
		Hanshoer Bros, services.....	6 00
		J. Morton's Sons, brick.....	28 00
		Wm. Porter's Sons, chimneys.....	11 70
		F. Aldrich, repairs flags	58 50
		Goodyear Rubber Co., hose.....	17 50
		Smith Bros., supplies.....	39 25
		J. H. Haggerty, naphtha	71 55
		Metropolitan Gas Light Co., gas	38 88
		C. R. Pollion, pole.....	100 00
		Liebman Bros. & Owings, soap.....	14 34
		F. E. McAllister, water barrels.....	83 12
		C. T. Reynolds & Co., paint burner.....	5 00
		Wyckoff, Seaman & Benedict, typewriter.....	125 00
"	9..	E. R. Shipman, provender.....	289 42
		Prospect Park and Coney Island Railroad, tickets ..	60 00
"	13..	L. D. Beck, gravel.....	224 43
		L. D. Beck, gravel.....	231 00
"	19..	Knutt Forsberg, services.....	60 00
		Chas. O'Rorke, carting tools.....	4 50
		Harris & McGuire, hauling gravel.....	373 75
		L. D. Beck, gravel.....	217 80
		L. D. Beck, gravel.....	211 20
		J. P. Rappalye, stationery.....	21 50
		L. Conterno & Sons, music.....	110 00
		L. Conterno & Sons, music.....	200 00
		L. Conterno & Sons, music.....	210 00
		L. Conterno & Sons, music.....	210 00
		L. Conterno & Sons, music.....	110 00
		L. Conterno & Sons, music.....	210 00
		Photogravure Co., printing.....	200 00
		Photogravure Co., printing.....	100 06
Sept.	11..	J. H. Haggerty, naphtha and oil.....	71 03
		Pioneer Boiler Works, boiler and mixer	2,154 00
		Kaeffell & Esser, artists materials.....	18 55

Supplies, 1889—Continued.

Sept.	11..	Fulton Printing and Stationery Co., stationery.....	\$17 85
		Nelson Bros., coal.....	152 25
		J. W. Buckley, pump hose, etc.....	46 00
		L. Conterno & Sons, music.....	210 00
		L. Conterno & Sons, music.....	110 00
		L. Conterno & Sons, music.....	210 00
		S. W. Cornell, iron.....	3 92
		S. W. Cornell, iron.....	5 80
		S. W. Cornell, barrows, shovels, etc.....	42 91
		S. W. Cornell, rope.....	6 12
		Harris & McGuire, hauling gravel.....	356 50
		S. O. Burnett, nails and rivets.....	11 05
		S. O. Burnett, galvanized chains.....	2 25
		S. O. Burnett, steel brushes.....	4 80
		S. O. Burnett, goods for repair mowers.....	82 00
		Goodyear Rubber Co., hose.....	25 00
		L. Conterno & Sons, music.....	110 00
		L. Conterno & Sons, music.....	110 00
		L. Conterno & Sons, music.....	210 00
		L. Conterno & Sons, music.....	210 00
		L. Conterno & Sons, music.....	210 00
		J. L. Mott Iron Works, fountains.....	75 00
		Knutt Forsberg, services.....	56 00
		J. Carbery, services.....	76 50
		Marvin Safe Company, moving safes.....	23 50
		E. & F. Concklin, flagging.....	45 23
		J. H. Haggerty, naptha.....	41 33
		J. Morton & Sons, cement and brick.....	32 72
		E. A. Boyd & Sons, glass.....	24 20
		Philip Dory & Co., cleaning boiler.....	76 75
		J. W. Lockwood, repairing table.....	4 00
		Metropolitan Gas Light Co., gas.....	37 92
		J. Morton & Sons, cement and brick.....	58 00
		Beers & Ressegue, lumber.....	155 98
		Citizens' Electric Illuminating Co., electric lights....	589 00
		Hemmingway's London Purple Co., purple.....	43 20
		E. R. Shipman.....	64 00
		E. R. Shipman.....	29 50
		E. R. Shipman.....	65 00
		E. R. Shipman.....	84 00
		Geo. G. Martin, printing and binding.....	132 50
		P. Henderson & Co., plants.....	6 00
		S. W. Cornell, rivets, etc.....	25 20
		Cranford & Valentine, asphalt pavement.....	831 00
		Cranford & Valentine, re-surfacing walks.....	464 23
		E. P. Hampson & Co., engine.....	830 00
		Goodyear Rubber Co., belt and lacing.....	12 87
		Roswell Eldridge, Jr., locust poles.....	105 00
		S. O. Burnett, nails.....	14 95
"	14..	Charles F. Moore, disbursements.....	67 39
		Harris & McGuire, Belgian blocks.....	242 50
		H. Aschenback, harness.....	160 00
		H. Goetz, harness.....	200 00
"	16..	F. N. Ennes, music.....	215 00

Supplies, 1889—Continued.

Sept.	16..	L. Conterno & Sons, music	\$110 00
		L. Conterno & Sons, music	210 00
		L. Conterno & Sons, music	210 00
"	23..	Douglas & Peterkin, horse	250 00
		W. B. Dunham & Son, carriage and harness	215 50
		Harris & McGuire, hauling gravel	381 42
		Knutt Forsberg, services	56 00
		L. Conterno & Sons music	110 00
		L. Conterno & Sons, music	210 00
		L. Conterno & Sons, music	210 00
"	24..	L. D. Beck, gravel	211 20
		L. D. Beck, gravel	198 00
		L. D. Beck, gravel	217 80
		L. L. Beck, gravel	220 00
		L. D. Beck, gravel	198 26
		L. D. Beck, gravel	208 56
Oct.	11.	Knutt Forsberg, services	60 00
"	12..	Charles F. Moore, disbursements	62 74
		Robert Courtney, disbursements	42 62
		Harris & McGuire, Belgian blocks	100 80
		Harris & McGuire, hauling gravel	354 43
		C. T. Raynolds & Co., oil finish	28 75
		C. T. Raynolds & Co., Jap. tin	11 72
		C. T. Raynolds & Co., hartshorn	3 04
		C. T. Raynolds & Co., supplies	184 00
		C. T. Raynolds & Co., turpentine and oil	71 25
		Jos. Ruppert, cart shafts	1 50
		Jos. Ruppert, tire iron	25 87
		Jos. Ruppert, wood and shafts	10 36
		Jos. Ruppert, wheel and clip	19 79
		E. R. Shipman, provender	100 00
		J. Morton & Son, brick	50 55
		Sam'l W. Cornell, rakes and brooms	47 40
		Sam'l W. Cornell, back saw and files	17 72
		Sam'l W. Cornell, lead	22 61
		Sam'l W. Cornell, hardware	98 04
		Sam'l W. Cornell, hardware	26 19
		J. H. O'Reilly, moving furniture	15 00
		J. H. Haggerty, naphtha	41 00
		Fullerton & Anderson, basins	38 84
		Beers & Ressegue, lumber	27 67
		Wyckoff, Seaman & Beers, supplies	2 60
		Oakley & Sons, carriage hire	6 00
		Havens Medical Co., linament	6 00
		N. Y. & N. J. Telephone Co., service	37 25
		Goodyear Rubber Co., hose	40 00
		Fulton Printing Co., stationery	37 50
		Pioneer Iron Works, supplies	129 56
		Citizens' Electric Manufacturing Co., electric light ..	570 00
		Nelson Bros., coal	129 25
		Metropolitan Gas Light Co., gas	32 96
		N. Y. Chemical Co., tar	408 54
		H. Assenback, fly nets	10 00
		Kenyon & Newton, lumber	28 00

Supplies, 1889—Continued.

October 12..	J. Carberry, use horse.....	\$48 00
	Young & Elliott, seed.....	128 00
	L. Conterno & Sons, music.....	110 00
	L. Conterno & Sons, music.....	210 00
	L. Conterno & Sons, music.....	210 00
	L. Conterno & Sons, music.....	110 00
	L. Conterno & Sons, music.....	210 00
	L. Conterno & Sons, music.....	210 00
" 14..	Leibman Bros & Owings, toilet paper.....	10 00
	H. R. Asserson.....	20 00
	Williamsburgh City Fire Insurance Co, insurance ..	209 00
" 21..	Knutt Forsberg, services.....	44 00
	Harris & McGuire, hauling gravel.....	363 40
	J. H. Dahlman, horses.....	425 00
	J. Konoalinka, expenses deer.....	6 00
	Fulton Printing Co., stationery.....	29 50
	A. L. Don. plants.....	1,061 50
Nov. 7..	Knutt Forsberg, services.....	40 00
" 16..	R. H. Attelsey & Son, provender.....	203 60
	Charles F. Moore, disbursements.....	61 96
	M. A. McNamara, helmets.....	21 21
	S. W. Cornell, hardware.....	9 65
	S. W. Cornell, hardware, wire.....	57 00
	S. W. Cornell, hardware.....	33 02
	S. W. Cornell, horse nails.....	61 60
	S. W. Cornell, rakes, etc.....	37 92
	S. W. Cornell, screws.....	6 10
	S. W. Cornell, supplies.....	43 25
	S. W. Cornell, iron.....	27 84
	Harris & McGuire, tiles.....	66 23
	Harris & McGuire, hauling gravel.....	258 98
	L. D. Beck, gravel.....	184 80
	L. D. Beck, gravel.....	183 48
	L. D. Beck, gravel.....	190 30
	L. D. Beck, gravel.....	190 08
	N. Y. Chemical Tar Co., tar.....	397 56
	N. Y. Chemical Tar Co., tar.....	451 20
	N. Y. Chemical Tar Co., tar.....	452 20
	P. Henderson, flowers.....	25 00
	P. Henderson, flowers.....	87 00
	W. B. Dunham, robe and blanket.....	15 75
	E. R. Shipman, provender.....	161 32
	E. R. Shipman, provender.....	3 92
	Nelson Bros., coal.....	252 00
	Nelson Bros., coal.....	168 00
	Nelson Bros., coal.....	96 50
	J. Henry Haggerty, naphtha.....	40 63
	J. Henry Haggerty, naphtha.....	40 71
	Fullerton & Anderson, closet pans.....	3 00
	Fullerton & Anderson, drinking hydrants.....	27 75
	Protective Ventilator Co., ventilators.....	22 75
	Beers & Ressegue, lumber.....	425 80
	Citizens' Electric Illuminating Co, light.....	465 00
	Roswell Eldridge, Jr., locust poles.....	58 50

Supplies, 1889—Continued.

Nov.	16..	Thomas Cassin, furniture	\$48 50
		Thomas Inson, algajell	36 50
		M. Beeber, gloves	77 25
		Liebman Bros. & Owings, toilet paper	10 00
		C. T. Reynolds & Co., supplies	62 50
		Leonard & Ellis, oil	78 00
		Marvin Safe Co., moving safe	15 00
		J. R. Rappalye, blank book	22 50
		Metropolitan Gas Light Co., gas	36 16
Nov.	21..	Photo Gravure Co., printing	306 30
		Photo Gravure Co., printing	152 80
		Douglass & Peterkin, horse blankets	73 00
		Douglass & Peterkin, horse	250 00
		L. W. Beck, gravel	199 32
		L. W. Beck, gravel	198 00
Nov.	26..	Geo. V. Brewer, disbursements	76 10
Dec.	4..	Knutt Forsberg, services	40 00
"	7..	Fulton Printing Co., stationery	60 00
		Geo. Hyers ice	37 40
		Blake & Williams, steampipe	120 00
		Blake & Williams, nipples	2 16
		Treadwell, Sote & Co., clothing	482 40
"	9..	Louis D. Beck, gravel	132 00
		Louis D. Beck, gravel	122 76
		J. Henry Haggerty, naphtha	41 62
		Joseph Cassidy, clipping horses	12 00
		Geo. B. Forester, ground bone	1,200 00
		S. W. Cornell, corn brooms	14 00
		R. H. Attelsey & Son, provender	163 16
		Fullerton & Anderson, rods	43 80
		Chas. F. Moore, disbursements	48 62
		John M. Bullwinkle, stationery	20 77
		Metropolitan Gas Light Co., gas	36 80
		Keuffell & Esser, draughtsman's supplies	7 07
		C. T. Reynolds & Co., sash tools	5 69
		C. T. Reynolds & Co., liquid dyes	1 25
		Harris & McGuire, hauling gravel	221 95
		Harris & McGuire, hauling gravel	346 15
"	19..	Robert Courtney, office disbursements	37 58
		Teal & Morrow, rubber coats	72 00
		A. M. D. T. Co., service	42 80
		Knutt Forsberg, service	36 00
		Knutt Forsberg, service	24 00
"	23..	As. Fuller, services	50 00
		Standard Union, book	25 00
		S. W. Cornell, hardware	46 66
		S. W. Cornell, lanterns	45 00
		S. W. Cornell, hardware	29 23
		S. W. Cornell, wire brushes	9 50
		S. W. Cornell, brooms	13 00
		S. W. Cornell, brushes and blacking	14 05
		S. W. Cornell, locks	12 00
		S. W. Cornell, grates and padlock	9 50
		S. W. Cornell, hardware	36 52

Supplies, 1889—Concluded.

Dec.	23..	Nelson Bros., coal.....	\$53 50
		Nelson Bros., coal.....	135 00
		Nelson Bros., coal.....	338 00
		Fullerton & Anderson, pipe.....	37 60
		Citizen's Electric Illuminating Co., electric light....	465 00
		Citizen's Electric Illuminating Co., electric light....	450 00
		Beers & Ressegue	109 80
		Beers & Ressegue	114 18
		John Morton & Sons, cement and lime.....	143 75
		John Morton & Sons, cement and lime.....	25 55
		J. Henry Haggerty, oil	41 62
		A. D. Telegraph Co., services.....	4 40
		N. Y. & N. J. Telephone Co., services.....	47 90
		J. L. Mott Iron Works, stoves.....	38 68
		Douglas & Petterkin	700 00
		Metropolitan Gas Light Co., gas	43 04
		R. H. Attlesay & Son, provender.....	280 50
		Chas. F. Moore, disbursements.....	38 52
		Goodyear Rubber Co., hose	27 50
		Hanshew Bros., services	25 00
		Fulton Printing & Stationery Co., stationery.....	26 00
		Peter Henderson & Co., flowers	160 00
		Pioneer Iron Works, supplies.....	70 86
		Howell & Saxton, gratings.....	131 10
		S. O. Burnett, wire.....	24 00
		Total	\$84,896 82

ANNUAL REPORT OF POLICE FORCE, 1889.

1 Captain.
 7 Sergeants.
 59 Patrolmen.
 Total force—67.

Distributed as follows:

PROSPECT PARK—6 sergeants, 47 patrolmen.
 WASHINGTON PARK—1 sergeant, 5 patrolmen.
 CITY PARK—2 patrolmen.
 TOMPKINS PARK—2 patrolmen.
 CARROLL PARK—1 patrolman.
 EASTERN PARKWAY—1 patrolman.
 OCEAN PARKWAY—1 patrolman.

ACCIDENTS.

Carriages and sleighs.....	144
Saddle horses	19
Bicycles and tricycles.....	10
Fell in the lake.....	6
Fell in the park	8
Fell on the ice.....	1
Taken sick in park....	8
Fracture of leg by falling from wall in Washington Park	1
Drowned on East Side Lands	1
Hurt on ball grounds	1
Struck with stone.....	1
Total.....	<hr/> 200

Arrests.

OFFENCES.	Prospect Park.	Washington Park.	City Park.	Tompkins Park.	Carroll Park.	Coney Island.	Total.
Intoxication	20	18	17	1	2	3	61
Malicious mischief	2						2
Disorderly conduct	3	2	2				7
Assault	4						4
Violation of park ordinance	27	3			2	2	34
Reckless driving	5						5
Indecent exposure	3	2					5
Incest	2						2
Lounging	1						1
Violating public decency	2						2
On suspicion of larceny			1				1
Totals	69	25	20	1	4	5	124

Lost children Prospect Park, 34.

Suicides Prospect Park, 4.

Attempted suicide Prospect Park, 1.

Dead infants found in Prospect Park, 1.

APPOINTED PERMANENT POLICEMEN.

1889.	1889.
April 2, John E. Denham.	April 2, John B. Mulhearn.
“ 2, Ray T. Chartier.	“ 2, John P. McNamara.
“ 2, Mathias Johnston.	“ 2, James O'Donnell.
“ 2, Joseph H. Ward.	May 21, Wm. H. Slattery.
“ 2, Sam'l H. Ferguson.	Nov. 8, Girard B. Hillyer.
“ 2, Patrick Creamer.	“ 8, Wm. E. Willis.
“ 2, John T. Clarke.	“ 8, T. J. Kelly.
“ 2, Daniel Byrne.	“ 8, John J. Meehan.
“ 2, John E. Desmond.	“ 8, Theodore Adee.
“ 2, James Cassidy.	“ 8, Asbury J. Porter.
“ 2, George M. Jacob.	“ 8, Herman Eger.
“ 2, Joseph S. White.	“ 8, James H. Ham.
“ 2, Edward Kelly.	Dec. 17, Edward McGuire.
“ 2, Henry T. Hilton.	

APPOINTED SPECIAL POLICEMEN.

April 16, Theodore Adee.	June 14, T. J. Kelly.
“ 16, Wm. H. Slattery.	“ 14, John J. Meehan.
“ 16, Jos. A. Newman.	“ 14, Asbury J. Porter.
“ 16, Jas. H. Ham.	“ 14, Herman Eger.
“ 16, Peter J. Campbell.	“ 14, Timothy Heffernan.
June 14, Philip Duffy.	“ 14, Wm. J. Donaher.
“ 14, Girard B. Hillyer.	“ 14, Edward McGuire.
“ 14, William E. Willis.	

DISCHARGED OCTOBER 31st. SPECIAL POLICE.

Jos. A. Newman.....	Expiration of Service.
Jas. H. Ham.....	“ “
Theodore Adee.....	“ “
Philip Duffy	“ “
Girard B. Hillyer	“ “
Wm. E. Willis.....	“ “
T. J. Kelly	“ “
Asbury J. Porter	“ “
Herman Eger	“ “
Timothy Heffernan	“ “
Wm. J. Donaher	“ “
Ed. McGuire	“ “
John J. Meehan.....	“ “

DISMISSED.

Edward O'Neil, March 19.....	Intoxication
Wm. H. Dayton, May 7.....	“

RESIGNED.

Peter J. Campbell	May 16
Mathias Johnston.....	December 1

DIED.

George W. Smith.....	March 4
Peter Hoye.....	August 8

Time Lost for following Causes.

MONTH.	Sick.	With Leave.	Without Leave.	Suspended.	Total.
January...	29	10	1	40
February..	21	14	4	39
March.....	29	16	19	64
April.....	9	23	7	17	56
May.....	15	19	4	9	47
June.....	44	14	6	64
July.....	92	19	1	5	117
August.....	71	34	2	107
September	37	24	1	27	89
October..	31	16	5	2	54
November..	24	15	2	7	48
December..	46	18	64
Totals...	448	222	27	92	789

The above report shows the number of days lost during each month, for the year 1889.

PARADES.

May 26th. Decoration of Lincoln Monument.

June 5th. Brooklyn Sunday School Union Anniversary.

October 30th. Laying of Corner Stone for Memorial Arch.

SATURDAY CONCERTS.

Prospect Park—15.

First Concert, June 8th.

Last Concert, September 28th.

Washington Park—16.

First Concert, June 8th.

Last Concert, September 28th.

SUNDAY CONCERTS.

Prospect Park—13.

First Concert, July 7th.

Last Concert, September 29th.

Two concerts for benefit of Johnstown Sufferers.

Sunday, June 16th.

Sunday, June 23d.

Picnics.....390, representing 47,863 persons

Base ball games 1,334

Foot ball games..... 106

Cricket games 92

Lacrosse games 31

About 10,000 games of Lawn Tennis were played.

Number of skating days—3.

First day's skating, February 15th.

Last day's skating, February 25th.

Visitors, 1889.

MONTH.	Carriages.	Equestrians.	Pedestrians.	Sleighs.	Total.
January...	547,826	5,559	119,467	672,852
February..	198,651	2,790	148,630	350,071
March.....	571,500	6,645	173,146	751,291
April.....	444,095	5,717	174,401	624,213
May.....	646,817	7,837	309,850	964,504
June.....	586,869	12,922	646,620	1,246,111
July.....	480,548	4,222	758,087	1,242,857
August....	640,833	6,534	821,810	1,469,177
September.	538,911	4,743	359,041	902,695
October..	509,016	2,936	193,073	705,025
November.	422,875	3,399	143,131	569,405
December.	341,581	5,642	114,895	17,463	479,582
Totals..	5,929,522	68,947	3,961,185	17,463	9,977,783

Total number Visitors 9,977,783

“ “ on Sundays..... 2,588,392

“ “ on Concert Days 907,873

Largest number in one day, Sunday, Aug. 18th .. 135,365

M. A. McNAMARA,

To ANEURIN JONES,

Captain.

General Superintendent.

METEOROLOGICAL OBSERVATORY
—OF THE—
Brooklyn Park Commission,
PROSPECT PARK, BROOKLYN.

Latitude $40^{\circ} 41'$ North, Longitude $73^{\circ} 57'$ West.

Height of Instruments Above the Ground, 50 feet; Above the
Sea, 220 feet.

FOR THE YEAR 1889.

OSCAR C. WHEDON,
METEOROLOGIST.

JANUARY, 1889.

DAY.	BAROMETER.			THERMOMETERS.								HYGROMETER WIND			RAIN AND SNOW.			
	REDUCED TO FREEZING.			MEAN.		MAXIMUM.		MINIMUM.		FORCE OF VAPOR.	RELATIVE HUMIDITY.	VELOCITY IN MILES.	DEPTH IN INCHES.					
													Duration.	Water.	Snow.			
	Mean.	Maximum	Minimum	Dry.	Wet.	Dry.	Wet.	Dry.	Wet.	Mean.	Mean.	Total.						
1.....	29.707	29.746	29.650	40	36	43	37	32	39	.157	65	267						
2.....	29.688	29.761	29.782	33	35	42	38	35	33	.154	66	191						
3.....	29.884	29.902	29.858	40	35	43	38	35	33	.151	62	189						
4.....	29.900	29.907	29.888	41	39	47	43	35	34	.202	77	215						
5.....	29.776	29.803	29.626	42	41	48	48	37	37	.253	94	715						
6.....	29.410	29.434	29.634	40	40	41	47	31	39	.258	138	237						
7.....	29.352	29.416	29.296	39	37	40	38	37	36	.194	82	455						
8.....	29.603	29.690	29.452	40	36	45	40	33	34	.157	64	334						
9.....	29.286	29.546	29.132	44	41	51	49	37	37	.238	80	473						
10.....	29.575	29.742	29.392	40	36	43	40	36	33	.164	65	561						
11.....	29.893	29.918	29.869	37	33	44	37	33	31	.146	66	283						
12.....	30.068	30.118	30.006	34	30	36	30	32	29	.111	56	237						
13.....	30.096	30.117	30.036	35	31	38	34	28	27	.102	67	171						
14.....	30.162	30.108	30.011	33	31	37	35	31	27	.141	73	293						
15.....	30.147	30.183	30.111	32	28	36	30	23	23	.103	56	191						
16.....	29.950	30.064	29.806	30	37	42	41	37	31	.198	81	483						
17.....	29.469	29.526	29.398	52	50	57	52	42	48	.348	91	249						
18.....	29.676	29.750	29.631	41	37	46	40	36	34	.166	66	315						
19.....	30.144	30.269	29.981	26	21	35	28	20	15	.065	42	314						
20.....	30.096	30.304	29.774	23	21	32	32	16	13	.093	64	367						
21.....	29.738	29.648	29.173	34	32	37	36	30	28	.168	86	579						
22.....	30.086	30.241	29.972	31	28	34	29	27	26	.117	69	165						
23.....	30.293	30.315	30.269	33	30	38	32	26	25	.119	63	143						
24.....	30.088	30.192	29.961	38	37	42	40	31	32	.197	84	128						
25.....	29.897	29.906	29.896	39	35	45	37	35	34	.155	65	151						
26.....	29.754	29.824	29.671	40	37	50	42	32	30	.184	73	129						
27.....	29.264	29.514	28.888	38	37	40	39	35	36	.208	91	552						
28.....	29.092	29.130	29.027	37	32	44	33	34	33	.125	57	541						
29.....	29.405	29.623	29.203	25	22	30	27	16	23	.087	62	526						
30.....	29.564	29.922	29.765	26	23	34	29	19	16	.099	54	243						
31.....	29.660	29.867	29.502	39	36	45	40	29	31	.176	73	384						
Mean.....	29.645	29.851	29.529	37	34	42	37	31	21	.157	70	11,021	H. M.	108.00	INCHES.	3.28	INCHES.	2.00

*Readings at 7 A. M., 2 and 9 P. M.

Fall of rain for the month, 3.28 inches.

Snow, 2 inches.

FEBRUARY, 1889.

56

DAY.	BAROMETER.			THERMOMETERS.						HYGROMETER WIND			RAIN AND SNOW.		
	REDUCED TO FREEZING.			MEAN.		MAXIMUM.		MINIMUM.		FORCE OF VAPOR.	RELATIVE HUMIDITY.	VELOCITY IN MILES.	DEPTH IN INCHES.		
													Duration.	Water.	Snow.
	Mean.	Maximum	Minimum	Dry.	Wet.	Dry.	Wet.	Dry.	Wet.	Mean.	Mean.	Total.			
1.....	29.694	29.807	29.560	29	26	36	30	24	21	.106	66	499			
2.....	29.589	29.680	29.535	33	28	40	32	22	22	.105	56	371			
3.....	29.489	29.568	29.432	32	29	42	38	22	20	.136	71	384			
4.....	29.683	29.726	29.726	26	23	21	31	15	14	.087	68	213			
5.....	29.331	29.432	29.185	39	41	38	54	27	33	.200	76	312			
6.....	29.430	29.531	29.312	13	19	19	16	15	13	.056	54	603			
7.....	29.729	29.861	29.585	17	19	19	16	11	12	.060	56	615			
8.....	29.842	29.931	29.775	29	27	27	25	16	16	.147	74	143			
9.....	29.718	29.800	29.668	27	32	32	32	28	24	.123	71	195			
10.....	29.884	29.959	29.835	30	29	34	30	25	22	.100	60	201			
11.....	29.601	29.742	29.498	29	28	34	31	25	25	.140	89	145			
12.....	29.462	29.478	29.440	26	27	30	26	23	20	.101	72	381			
13.....	29.493	29.533	29.460	18	13	24	16	14	15	.063	64	285			
14.....	29.742	29.871	29.609	21	19	27	24	12	12	.073	64	149			
15.....	30.057	30.120	29.976	28	29	36	32	19	18	.098	71	127			
16.....	29.904	30.075	29.680	33	31	40	39	24	22	.165	85	219			
17.....	29.556	29.565	29.507	40	39	45	41	35	37	.225	91	429			
18.....	29.468	29.770	29.193	33	35	40	35	34	34	.188	90	332			
19.....	29.751	29.920	29.570	29	26	34	27	26	26	.102	63	619			
20.....	30.155	30.202	30.071	26	22	35	26	21	20	.077	55	219			
21.....	30.333	30.396	30.388	29	26	35	29	21	20	.077	71	197			
22.....	30.021	30.144	29.841	33	30	35	32	20	28	.120	86	171			
23.....	30.207	30.351	30.028	13	10	20	14	6	5	.044	54	359			
24.....	30.442	30.549	30.290	11	9	17	13	1	2	.043	58	171			
25.....	30.314	30.448	30.233	19	17	24	20	14	14	.067	65	125			
26.....	30.502	30.531	30.462	25	22	29	26	15	14	.090	65	125			
27.....	30.294	30.352	30.227	31	31	34	33	25	29	.176	100	144			
28.....	30.268	30.288	30.259	33	31	36	32	29	32	.158	83	96			
Mean.....	29.856	29.881	29.758	23	25	32	29	21	20	.114	72	7.829	H. M. 64.00	INCHES. 2.46	INCHES. 12.00

Readings, 7 A. M, 2 and 9 P. M. Fall of rain for the month, 2.46 inches. Snow, 12.00 inches.

REPORT OF THE

MARCH, 1889.

DAY.	BAROMETER.			THERMOMETERS.						HYGROMETER		WIND.	RAIN AND SNOW.		
	REDUCED TO FREEZING.			MEAN.		MAXIMUM.		MINIMUM.		FORCE OF VAPOR.	RELATIVE HUMIDITY.	VELOCITY IN MILES.	DEPTH IN INCHES.		
													Duration.	Water.	Snow.
	Mean.	Maximum.	Minimum.	Dry.	Wet.	Dry.	Wet.	Dry.	Wet.	Mean.	Mean.	Total.			
1.	30.166	30.212	30.098	38	34	44	36	30	30	.143	65	149			
2.	29.971	30.039	29.906	39	35	43	38	35	33	.172	70	123			
3.	29.774	29.826	29.713	40	37	43	40	36	36	.193	79	131			
4.	29.490	29.589	29.386	36	35	42	37	35	32	.189	91	297			
5.	29.219	29.259	29.155	42	40	45	43	37	36	.219	84	252			
6.	29.015	29.080	28.967	43	38	46	39	36	35	.193	76	249			
7.	29.985	29.055	28.942	41	36	46	38	37	36	.154	62	557			
8.	29.241	29.324	29.157	35	33	42	38	32	30	.156	73	579			
9.	29.377	29.402	29.358	34	32	39	34	30	30	.151	77	672			
10.	29.516	29.572	29.454	33	31	39	34	29	31	.140	66	589			
11.	29.683	29.756	29.608	28	35	41	31	29	28	.089	43	480			
12.	29.756	29.769	29.748	41	43	52	46	30	29	.192	67	247			
13.	29.760	29.812	29.700	50	50	58	50	37	34	.227	58	201			
14.	29.960	30.012	29.888	34	33	43	39	36	34	.169	70	215			
15.	29.790	29.893	29.686	36	37	40	36	32	33	.162	73	379			
16.	29.560	29.614	29.528	40	35	52	40	35	29	.138	62	537			
17.	29.539	29.628	29.544	39	37	40	38	36	35	.192	82	253			
18.	29.629	29.638	29.613	42	39	46	42	37	36	.207	78	173			
19.	29.537	29.550	29.526	42	38	45	40	39	37	.184	69	159			
20.	29.488	29.498	29.471	35	34	34	34	34	34	.183	90	337			
21.	29.583	29.671	29.479	34	34	35	35	33	33	.199	100	173			
22.	29.803	29.945	29.756	43	37	52	40	35	34	.155	61	211			
23.	29.799	29.868	29.732	49	42	58	47	39	35	.175	51	257			
24.	29.581	29.683	29.462	54	46	60	51	42	41	.205	49	337			
25.	29.403	29.435	29.342	47	39	52	43	40	34	.159	53	227			
26.	29.776	29.796	29.731	37	32	43	37	30	26	.131	59	149			
27.	29.684	29.785	29.591	48	43	53	47	35	31	.259	87	539			
28.	29.562	29.686	29.441	42	36	41	47	37	33	.212	77	249			
29.	29.729	29.778	29.661	45	40	55	44	34	35	.184	62	271			
30.	30.042	30.143	29.901	33	31	39	34	35	26	.179	76	435			
31.	29.819	30.073	29.601	36	36	40	37	35	35	.215	100	201			
Mean,....	29.624	29.692	29.552	40	35	46	40	35	33	.178	72	9.752	H. M. 45.10	INCHES 2.60	INCHES. ()

* Readings, 7 A. M., 2 and 9 P. M.

Fall of Rain for the month, 2.60 inches.

Snow, 5.00 inches.

APRIL, 1889.

58

DAY.	BAROMETER.			THERMOMETERS.						HYGROMETER		WIND	RAIN AND SNOW.			
										FORCE OF VAPOR.	RELATIVE HUMIDITY		VELOCITY IN MILES.	DEPTH IN INCHES.		
	REDUCED TO FREEZING.			MEAN.		MAXIMUM.		MINIMUM.				Duration.		Water.	Snow.	
	Mean.	Maximum	Minimum	Dry.	Wet.	Dry.	Wet.	Dry.	Wet.							Mean.
	*			*	*					*	*					
1.	29.565	29.606	29.601	33	37	40	39	35	36	.222	.93	171				
2.	29.518	29.596	29.484	45	43	52	46	35	38	.245	.87	207				
3.	29.496	29.638	29.393	47	45	52	47	43	42	.278	.83	253				
4.	29.683	29.760	29.586	44	39	52	41	40	38	.177	.61	291				
5.	29.775	29.792	29.775	42	37	52	39	35	35	.156	.60	245				
6.	29.959	30.042	29.895	41	38	50	40	35	35	.179	.69	365				
7.	30.061	30.114	30.018	42	34	50	37	39	36	.158	.57	487				
8.	29.858	29.869	29.784	47	38	54	40	40	35	.105	.33	369				
9.	29.627	29.705	29.577	53	44	65	47	42	38	.169	.42	243				
10.	29.663	29.721	29.613	53	43	67	45	47	42	.158	.41	219				
11.	29.704	29.769	29.620	54	47	64	51	42	41	.226	.54	190				
12.	29.373	29.452	29.314	58	56	66	61	52	52	.421	.87	336				
13.	29.456	29.509	29.365	48	43	56	45	42	40	.208	.63	363				
14.	29.890	29.944	29.855	44	39	56	44	35	33	.179	.61	197				
15.	30.072	30.112	30.012	45	40	55	45	40	37	.191	.64	315				
16.	30.025	30.080	29.960	46	41	53	46	39	36	.190	.60	429				
17.	29.815	29.962	29.719	48	47	52	50	42	42	.308	.90	407				
18.	29.767	29.798	29.729	55	52	65	56	49	49	.378	.88	141				
19.	29.829	29.844	29.818	61	57	69	61	54	52	.419	.77	201				
20.	29.774	29.805	29.755	55	53	65	59	48	48	.390	.90	121				
21.	29.714	29.749	29.664	52	55	75	63	53	46	.352	.63	431				
22.	29.988	30.081	27.891	49	43	53	46	42	41	.204	.61	239				
23.	30.151	30.166	30.132	46	41	55	42	40	40	.167	.52	267				
24.	30.016	30.094	29.988	54	50	60	54	45	47	.314	.76	383				
25.	29.744	29.831	29.682	56	54	65	57	49	48	.392	.88	387				
26.	29.399	29.537	29.292	54	54	67	56	52	50	.413	1.00	384				
27.	29.062	29.172	29.003	53	53	55	55	50	50	.389	1.00	237				
28.	29.201	29.304	29.008	54	53	57	54	52	50	.395	.87	212				
29.	29.367	29.442	29.312	55	50	65	52	50	46	.316	.52	432				
30.	29.560	29.590	29.523	55	51	64	59	45	43	.327	.69	369				
Mean	29.704	29.735	29.646	51	46	58	49	43	39	.266	.71	9.051	H. 61.00	INCHES. 5.10		

* Readings at 7 A.M. and 9 P. M. Fall of Rain for the month, 5.10 inches.

REPORT OF THE

MAY, 1889.

DAY.	BAROMETER.			THERMOMETERS.						HYGROMETER		WIND	RAIN AND SNOW.		
	REDUCED TO FREEZING.			MEAN.		MAXIMUM.		MINIMUM.		FORCE OF VAPOR.	RELATIVE HUMIDITY.	VELOCITY IN MILES.	DEPTH IN INCHES.		
													Duration.	Water.	Snow.
	Mean.	Maximum	Minimum	Dry.	Wet.	Dry.	Wet.	Dry.	Wet.	Mean.	Mean.	Total.			
1.	29.850	29.755	29.667	53	49	67	55	45	41	.316	78	168			
2.	29.750	29.657	29.632	51	45	60	50	42	41	.281	62	337			
3.	29.750	29.679	29.613	49	42	55	45	42	41	.188	56	313			
4.	29.724	29.740	29.712	55	47	63	51	42	41	.255	52	195			
5.	29.768	29.801	29.744	62	57	77	65	52	51	.351	54	145			
6.	29.793	29.795	29.795	67	58	78	66	60	53	.376	61	123			
7.	29.770	29.815	29.737	58	54	67	57	51	51	.357	75	145			
8.	29.743	29.756	29.725	56	53	65	63	49	50	.369	83	167			
9.	29.717	29.772	29.646	65	58	77	77	53	54	.18	67	191			
10.	29.504	29.603	29.460	74	69	87	72	61	61	.520	64	315			
11.	29.417	29.380	29.380	68	63	75	70	60	60	.516	76	173			
12.	29.567	29.606	29.531	64	61	72	68	51	57	.509	89	165			
13.	29.591	29.678	29.533	59	58	63	60	55	56	.485	98	195			
14.	29.517	29.528	29.500	64	61	75	63	59	60	.508	86	201			
15.	29.727	29.781	29.651	66	61	75	65	60	60	.465	71	153			
16.	29.841	29.886	29.808	65	60	71	65	55	60	.471	76	244			
17.	30.036	30.057	29.993	66	61	72	65	60	59	.478	75	172			
18.	30.073	30.097	30.048	65	62	75	66	56	59	.523	86	143			
19.	29.971	30.207	29.886	66	65	75	68	60	63	.601	93	174			
20.	29.674	29.776	29.578	66	65	70	66	64	64	.610	100	147			
21.	29.428	29.481	29.387	63	64	75	70	62	60	.560	81	338			
22.	29.528	29.537	29.513	60	53	67	56	55	59	.315	62	359			
23.	29.615	29.667	29.566	56	50	65	54	50	46	.273	62	367			
24.	29.640	29.695	29.591	64	62	75	70	50	53	.544	85	363			
25.	29.035	29.715	29.640	64	50	70	61	60	56	.430	71	251			
26.	29.721	29.805	29.626	60	56	55	61	47	48	.414	81	171			
27.	29.633	29.763	29.527	50	49	54	51	47	47	.344	95	335			
28.	29.563	29.654	29.517	62	55	73	56	50	52	.345	64	406			
29.	29.940	29.994	29.883	54	49	65	53	45	44	.247	66	135			
30.	29.864	29.877	29.844	62	62	75	69	50	51	.540	98	339			
31.	29.799	29.815	29.784	64	62	70	65	60	59	.555	89	483			
Mean.....	29.682	29.711	29.620	67	64	75	70	59	54	446	76	7,432	H. M. 37.00	INCHES. 2.88	

* Readings at 7 A. M., 2 and 9 P. M. Fall of rain for the month, 2.88 inches.

JUNE, 1889.

09

DAY.	BAROMETER.			THERMOMETERS.						HYGROMETER		WIND	RAIN AND SNOW.		
	REDUCED TO FREEZING.			MEAN.		MAXIMUM.		MINIMUM.		FORCE OF VAPOR.	RELATIVE HUMIDITY.	VELOCITY IN MILES.	DEPTH IN INCHES.		
													Duration.	Water.	Snow.
	Mean.	Maximum	Minimum	Dry.	Wet.	Dry.	Wet.	Dry.	Wet.	Mean.	Mean.	Total.			
	*			*	*					*	*				
1	29.799	29.815	29.680	62	62	65	63	60	61	.552	98	349			
2	29.767	29.767	29.677	65	61	77	65	60	58	.486	94	125			
3	29.697	29.745	29.632	69	60	69	64	57	57	.481	84	171			
4	29.492	29.516	29.410	64	64	76	70	60	58	.509	83	242			
5	29.354	29.368	29.338	68	60	75	63	62	60	.466	70	333			
6	29.476	29.548	29.376	62	54	73	56	55	51	.299	53	315			
7	29.680	29.700	29.667	66	63	75	71	54	55	.533	80	243			
8	29.634	29.657	29.604	70	68	77	72	63	62	.671	93	123			
9	29.755	29.873	29.737	74	70	85	75	64	67	.684	83	171			
10	29.812	29.811	29.809	76	70	85	75	64	66	.693	78	180			
11	29.819	29.835	29.796	76	72	85	75	69	69	.720	80	141			
12	29.921	29.950	29.885	66	63	69	65	61	60	.553	85	115			
13	29.873	29.898	29.860	71	70	80	78	60	60	.671	76	218			
14	29.883	29.944	29.885	75	70	85	72	67	69	.671	79	165			
15	29.830	29.873	29.810	76	71	83	74	68	69	.693	78	167			
16	29.779	29.809	29.705	75	70	85	74	68	67	.686	80	221			
17	29.570	29.616	29.509	76	71	87	75	68	69	.702	79	247			
18	29.754	29.792	29.711	64	56	74	58	60	55	.353	60	214			
19	29.686	29.686	29.570	65	61	74	65	57	55	.526	81	141			
20	29.615	29.708	29.520	75	67	85	70	65	64	.630	66	165			
21	29.685	29.726	29.650	74	66	85	71	73	57	.542	65	297			
22	29.729	29.729	29.550	72	64	78	67	66	59	.498	64	356			
23	28.968	30.037	29.868	67	55	74	59	58	50	.271	44	199			
24	30.174	30.205	30.124	67	58	75	62	59	53	.352	32	117			
25	30.154	30.187	30.117	66	62	75	68	60	57	.509	75	197			
26	29.919	29.988	29.843	71	70	78	73	65	67	.695	92	241			
27	29.901	29.927	29.868	74	71	84	74	67	68	.703	85	123			
28	29.902	29.906	29.882	77	69	81	73	67	67	.669	80	165			
29	29.879	29.896	29.857	75	71	85	75	70	69	.703	81	211			
30	29.922	29.936	29.897	73	70	79	73	69	69	.716	91	125			
Mean.....	29.733	29.815	29.397	71	65	78	69	63	62	.577	73	6.112	H. M.	INCHES.	
													38.00	3.10	

Readings at 7 A.M., 2 and 9 P.M.

Fall of rain for the month, 3.10 inches.

REPORT OF THE

JULY, 1889.

DAY.	BAROMETER.			THERMOMETERS.						HYGROMETER		WIND	RAIN AND SNOW.		
										FORCE OF VAPOR.	RELATIVE HUMIDITY.	VELOCITY IN MILES.	DEPTH IN INCHES.		
	REDUCED TO FREEZING.			MEAN.		MAXIMUM.		MINIMUM.					Duration.	Water.	Snow.
	Mean.	Maximum	Minimum.	Dry.	Wet.	Dry.	Wet.	Dry.	Wet.						
1.....	29.942	29.977	29.915	72	71	79	73	69	69	.738	95	245			
2.....	29.900	29.855	29.893	71	71	73	72	70	70	.774	98	251			
3.....	29.776	29.833	29.711	70	73	76	74	70	70	.768	96	211			
4.....	29.674	29.680	29.644	61	72	74	72	62	66	.718	90	197			
5.....	29.831	29.847	29.757	67	73	80	73	63	61	.408	64	261			
6.....	29.956	29.999	29.913	63	70	78	64	64	61	.467	64	191			
7.....	29.956	29.999	29.913	78	71	87	76	66	66	.666	68	213			
8.....	29.857	29.927	29.789	84	71	89	72	71	69	.654	61	239			
9.....	29.730	29.741	29.704	75	71	82	73	70	69	.693	81	214			
10.....	29.796	29.819	29.772	69	66	72	66	68	65	.623	82	171			
11.....	29.682	29.747	29.640	74	72	82	75	68	69	.751	90	143			
12.....	29.727	29.746	29.709	76	71	86	75	70	69	.690	77	125			
13.....	29.646	29.714	29.550	75	73	89	77	71	70	.766	87	191			
14.....	29.591	29.597	29.581	78	72	89	75	71	69	.679	67	243			
15.....	29.501	29.609	29.440	65	62	70	65	61	61	.528	85	289			
16.....	29.732	29.762	29.716	71	63	80	65	60	59	.473	65	267			
17.....	29.678	29.690	29.668	76	65	85	70	67	61	.508	64	239			
18.....	29.697	29.712	29.680	73	70	83	73	65	69	.711	89	145			
19.....	29.590	29.656	29.507	77	71	80	72	67	69	.701	80	283			
20.....	29.448	29.517	29.395	74	68	84	71	70	65	.614	72	309			
21.....	29.639	29.666	29.589	74	68	74	71	85	65	.614	72	117			
22.....	29.675	29.689	29.645	76	71	85	74	69	68	.693	77	165			
23.....	29.556	29.593	29.509	76	69	84	76	70	62	.635	69	243			
24.....	29.687	29.717	29.637	73	62	83	63	65	61	.398	50	160			
25.....	29.833	29.861	29.797	73	63	78	65	65	59	.473	65	142			
26.....	29.825	29.850	29.797	69	66	78	70	64	62	.591	83	191			
27.....	29.657	29.765	29.588	69	68	75	69	65	67	.676	97	145			
28.....	29.717	29.763	29.685	69	67	75	71	65	63	.655	93	195			
29.....	29.732	29.749	29.731	77	75	84	74	72	74	.846	93	214			
30.....	29.856	29.965	29.780	77	73	87	78	71	69	.776	84	129			
31.....	29.936	29.959	29.897	72	70	78	71	67	70	.719	93	151			
Mean,....	29.731	29.774	29.695	73	69	81	72	68	66	.638	82	6.288	H. M. 67.30	INCHES. 10.15	

* Readings, at 7 A. M., 2 and 9 P. M. Fall of Rain for the month, 10.15 inches.

DEPARTMENT OF PARKS.

AUGUST, 1889.

62

REPORT OF THE

DAY.	BAROMETER.			THERMOMETERS.						HYGROMETER		WIND	RAIN AND SNOW.		
	REDUCED TO FREEZING.			MEAN.		MAXIMUM.		MINIMUM.		FORCE OF VAPOR.	RELATIVE HUMIDITY.	VELOCITY IN MILES.	DEPTH IN INCHES.		
													Duration.	Water.	Snow.
	Mean.	Maximum	Minimum	Dry.	Wet.	Dry.	Wet.	Dry.	Wet.	Mean.	Mean.	Total.			
1.	29.863	29.963	29.827	74	72	87	74	70	70	754	89	195			
2.	29.775	29.796	29.759	76	74	77	70	70	73	796	88	191			
3.	29.775	29.775	29.757	75	72	85	75	70	69	746	86	149			
4.	29.879	29.921	29.825	76	70	85	73	69	69	667	75	195			
5.	29.842	29.890	29.815	69	67	73	70	65	65	653	93	141			
6.	29.915	29.939	29.887	69	64	77	69	62	60	550	78	165			
7.	29.856	29.865	29.863	71	62	76	63	65	62	442	59	167			
8.	29.929	29.949	29.905	63	61	73	63	62	58	448	67	189			
9.	29.819	29.878	29.754	71	68	78	71	65	63	632	82	171			
10.	29.665	29.686	29.640	74	70	85	74	70	67	686	81	237			
11.	29.744	29.771	29.699	69	60	78	63	66	58	405	57	245			
12.	29.871	29.895	29.843	66	60	75	63	59	55	442	70	197			
13.	29.878	29.909	29.823	71	66	78	69	62	60	582	77	171			
14.	29.546	29.616	29.485	72	71	78	75	69	69	705	98	144			
15.	29.561	29.639	29.470	70	65	80	68	65	59	573	79	192			
16.	29.701	29.724	29.674	69	61	76	63	60	59	430	62	163			
17.	29.765	29.790	29.754	68	62	77	64	61	61	458	64	237			
18.	29.847	29.875	29.823	68	63	75	65	62	60	515	77	127			
19.	29.713	29.807	29.780	72	67	85	71	63	61	591	76	213			
20.	29.722	29.725	29.716	76	69	85	93	70	65	635	72	147			
21.	29.687	29.707	29.645	78	71	87	76	72	68	669	70	195			
22.	29.659	29.678	29.633	77	70	85	71	74	69	647	70	151			
23.	29.732	29.751	29.716	70	67	77	68	68	65	615	82	121			
24.	29.854	29.905	29.803	71	68	78	70	67	67	657	88	151			
25.	29.910	29.905	29.912	71	64	79	67	65	60	537	72	179			
26.	29.999	30.038	29.948	66	60	75	62	63	53	435	68	291			
27.	30.016	30.045	29.978	65	60	71	61	60	58	431	72	261			
28.	29.937	29.961	29.918	63	56	68	62	56	55	444	76	189			
29.	29.891	29.909	29.877	66	63	75	68	59	55	557	81	171			
30.	29.887	29.882	29.883	71	65	85	70	61	61	552	84	201			
31.	29.917	29.924	29.901	75	68	85	72	66	63	583	64	149			
Mean.....	29.815	29.842	29.736	71	66	79	69	65	63	566	76	5.703	H. M. 69.55	INCHES. 5.25	

* Readings at 7 A. M., 2 and 9 P. M. Fall of Rain for the month, 5.25 inches.

SEPTEMBER, 1889.

DAY.	BAROMETER.			THERMOMETERS.						HYGROMETER		WIND.	RAIN AND SNOW.		
	REDUCED TO FREEZING.			MEAN.		MAXIMUM.		MINIMUM.		FORCE OF VAPOR.	RELATIVE HUMIDITY.	VELOCITY IN MILES.	DEPTH IN INCHES.		
													Duration.	Water.	Snow.
	Mean.	Maximum	Minimum	Dry.	Wet.	Dry.	Wet.	Dry.	Wet.	Mean.	Mean.	Total.			
1	*			*	*					*	*				
2	30.040	30.056	30.018	71	66	78	69	65	64	.585	73	135			
3	29.995	30.004	29.953	68	65	79	69	64	63	.575	83	149			
4	29.898	29.931	29.883	69	64	75	67	65	63	.546	79	151			
5	29.922	29.924	29.913	69	66	75	69	64	63	.601	85	147			
6	29.834	29.894	29.850	70	67	77	70	64	64	.628	87	127			
7	29.807	29.817	29.791	73	71	69	74	68	69	.721	89	213			
8	29.866	29.894	29.850	72	68	82	71	67	67	.644	84	117			
9	29.868	29.885	29.855	70	67	78	80	66	65	.635	87	123			
10	29.838	29.865	29.788	69	64	75	65	65	63	.536	76	435			
11	29.642	29.722	29.661	64	63	67	64	61	63	.538	93	741			
12	29.623	29.645	29.618	66	65	72	68	62	62	.623	95	579			
13	29.668	29.717	29.615	65	65	70	65	64	65	.617	100	487			
14	29.817	29.859	29.765	68	68	75	69	65	66	.668	97	333			
15	29.895	29.917	29.869	71	70	78	73	69	68	.717	94	167			
16	29.858	29.888	29.833	69	69	72	69	67	68	.696	98	171			
17	29.823	29.882	29.785	73	72	79	77	67	69	.743	95	147			
18	29.626	29.749	29.637	72	71	80	76	68	68	.745	94	216			
19	29.610	29.634	29.491	63	62	65	66	56	58	.550	96	249			
20	29.434	29.491	29.378	58	55	65	58	54	53	.391	78	203			
21	29.335	29.402	29.256	58	55	65	59	54	52	.405	85	267			
22	29.309	29.452	29.192	57	53	63	55	54	49	.397	79	384			
23	29.668	29.733	29.580	52	48	61	48	50	48	.310	74	271			
24	29.854	29.867	29.799	58	54	68	57	49	49	.363	75	269			
25	29.727	29.863	29.849	58	57	62	58	54	54	.443	92	291			
26	29.407	29.793	29.701	59	59	64	58	54	56	.502	100	342			
27	29.627	29.663	29.592	65	63	73	69	54	55	.564	91	362			
28	29.808	29.863	29.736	55	46	61	48	50	42	.194	46	386			
29	29.886	29.897	29.870	57	51	65	53	50	48	.291	63	191			
30	29.973	30.007	29.937	60	54	67	57	50	50	.355	70	172			
30.	29.792	29.880	29.685	62	61	69	65	58	58	.517	91	215			
Mean.	29.746	29.806	29.725	64	62	71	64	60	59	.540	84	8.144	H. M. 116.30	INCHES. 6.07	

* Readings at 7 A.M, 2 and 9 P.M. Fall of rain for the month. 6.07 inches.

OCTOBER, 1889.

64

REPORT OF THE

DAY.	BAROMETER.			THERMOMETERS.						HYGROMETER.		WIND.	RAIN AND SNOW.		
	REDUCED TO FREEZING.			MEAN.		MAXIMUM.		MINIMUM.		FORCE OF VAPOR.	RELATIVE HUMIDITY.	VELOCITY IN MILES.	DEPTH IN INCHES.		
													Duration.	Water.	Snow.
	Mean.	Maximum	Minimum	Dry.	Wet.	Dry.	Wet.	Dry.	Wet.	Mean.	Mean.	Total.			
1	29.404	29.486	29.338	64	61	71	65	59	62	.511	86	3-9			
2	29.665	29.828	29.491	55	50	60	55	40	44	.295	68	259			
3	29.820	29.871	29.773	55	50	61	53	45	45	.302	70	172			
4	29.848	29.915	29.806	56	50	65	53	50	44	.289	66	253			
5	29.857	29.829	29.793	52	47	60	51	43	41	.257	67	217			
6	29.645	29.651	29.636	55	54	60	58	52	51	.411	95	357			
7	29.607	29.650	29.560	50	43	55	45	45	40	.231	73	334			
8	29.770	29.784	29.740	46	42	52	43	40	40	.307	68	338			
9	29.934	29.792	29.697	51	45	60	48	40	40	.196	55	267			
10	29.651	29.716	29.603	53	47	60	49	49	46	.253	64	241			
11	29.715	29.752	29.691	54	48	65	54	46	43	.260	61	193			
12	29.670	29.729	29.642	58	56	65	59	51	51	.430	90	311			
13	29.771	29.823	29.702	47	46	55	48	45	43	.297	88	337			
14	29.669	29.750	29.596	44	43	46	44	43	42	.277	97	411			
15	29.607	29.763	29.536	52	46	60	50	44	43	.232	58	431			
16	29.801	29.888	29.822	50	43	60	45	43	39	.192	54	137			
17	29.834	29.870	29.766	50	46	60	50	45	43	.263	73	213			
18	29.835	29.881	29.780	51	48	60	49	45	47	.235	55	191			
19	29.888	29.912	29.879	54	51	62	56	45	43	.342	80	141			
20	29.728	29.745	29.710	61	57	70	60	52	52	.407	78	195			
21	29.986	29.986	29.789	46	41	51	45	44	43	.262	84	189			
22	30.044	30.072	30.044	47	43	57	45	40	38	.215	67	213			
23	30.126	30.140	30.118	38	36	45	38	35	33	.175	75	309			
24	29.963	30.012	29.865	40	37	43	39	34	32	.173	70	261			
25	29.773	29.810	29.718	46	44	49	46	38	39	.248	79	124			
26	29.744	29.753	29.736	51	50	55	52	43	47	.353	96	237			
27	29.523	29.627	29.350	57	57	60	58	55	57	.466	100	267			
28	29.471	29.550	29.290	52	51	58	54	49	46	.365	90	275			
29	29.744	29.803	29.671	47	44	54	46	45	43	.257	80	219			
30	29.890	29.912	29.870	47	41	50	46	44	43	.261	82	123			
31	29.871	29.902	29.842	48	47	50	48	45	45	.306	92	81			
Mean.....	29.782	29.811	29.707	51	47	57	50	45	44	288	76	76.34	H. M. 41.30	INCHES. 2.63	

* Readings at 7 A. M., 2 and 9 P. M. Fall of rain for the month, 2.63 inches.

NOVEMBER, 1889.

DAY.	BAROMETER.			THERMOMETERS.						HYGROMETER.		WIND	RAIN AND SNOW.		
	REDUCED TO FREEZING.			MEAN.		MAXIMUM.		MINIMUM.		FORCE OF VAPOR.	RELATIVE HUMIDITY.	VELOCITY IN MILES.	DEPTH IN INCHES.		
													Duration.	Water.	Snow.
	Mean.	Maximum.	Minimum.	Dry.	Wet.	Dry.	Wet.	Dry.	Wet.	Mean.	Mean.	Total.			
1.	*			*	*					*	*				
2.	29.927	29.972	29.872	53	52	58	57	47	48	369	91	85			
3.	29.845	29.959	29.718	58	56	62	58	50	50	416	94	338			
4.	29.845	29.890	29.764	48	56	60	59	50	48	413	91	251			
5.	29.608	29.964	29.912	45	51	57	49	44	41	227	60	261			
6.	29.979	29.977	29.959	37	44	50	42	41	37	169	58	287			
7.	29.954	29.964	29.932	38	43	50	40	40	36	164	59	309			
8.	29.855	29.885	29.821	47	42	55	48	37	36	206	62	197			
9.	29.903	29.944	29.864	48	45	55	47	46	44	293	84	84			
10.	29.696	29.755	29.693	52	52	54	54	45	45	389	100	231			
11.	29.702	29.782	29.615	48	47	50	49	45	44	311	93	123			
12.	29.879	29.882	29.877	48	46	50	49	44	42	299	89	119			
13.	29.925	29.945	29.884	50	40	60	51	44	44	323	91	132			
14.	29.527	29.750	29.337	52	50	55	54	46	49	385	100	225			
15.	29.538	29.575	29.507	54	49	61	52	50	46	299	74	504			
16.	29.945	30.100	29.771	36	34	47	40	32	28	143	59	489			
17.	30.329	30.382	30.242	33	28	40	30	26	23	095	45	142			
18.	30.175	30.295	30.090	37	32	45	36	28	25	121	53	126			
19.	29.903	29.990	29.828	45	42	50	45	40	38	229	76	361			
20.	29.543	29.646	29.473	52	51	58	56	45	49	386	100	327			
21.	29.807	29.483	29.467	46	45	57	45	43	45	286	93	163			
22.	29.366	29.513	29.191	46	45	50	48	41	41	388	92	123			
23.	29.167	29.205	29.149	49	47	52	48	45	45	301	86	357			
24.	29.634	29.820	29.443	46	42	53	48	45	38	330	74	338			
25.	29.978	30.006	29.944	46	43	52	48	40	38	238	77	165			
26.	29.987	30.075	29.930	44	42	49	46	40	36	249	85	337			
27.	30.283	30.302	30.244	40	35	43	38	35	33	146	59	97			
28.	29.925	30.123	29.683	46	45	54	54	36	36	303	94	335			
29.	29.343	29.486	29.255	48	45	54	53	40	36	266	76	315			
30.	29.635	29.708	29.591	35	31	37	32	31	30	067	46	371			
30.	30.038	30.166	29.892	32	26	33	28	29	24	070	39	301			
Mean,....	29.812	29.885	29.729	46	43	52	47	41	39	257	73	7.493	H. M. 133.20	INCHES. 10.15	

* Readings, at 7 A. M., 2 and 9 P. M.

Fall of Rain for the month, 10.15 inches.

DECEMBER, 1889.

96

DAY.	BAROMETER.			THERMOMETERS.						HYGROMETER.		WIND	RAIN AND SNOW.		
										FORCE OF VAPOR.	RELATIVE HUMIDITY.	VELOCITY IN MILES.	DEPTH IN INCHES.		
	REDUCED TO FREEZING.			MEAN.		MAXIMUM.		MINIMUM.					Duration.	Water.	Snow.
	Mean.	Maximum	Minimum	Dry.	Wet.	Dry.	Wet.	Dry.	Wet.						
1.	30.218	30.269	30.145	36	29	43	32	30	24	.076	37	267			
2.	29.909	30.016	29.790	43	37	54	42	34	29	.152	53	269			
3.	29.740	29.866	29.644	33	30	40	37	25	25	.149	78	306			
4.	30.199	30.230	30.173	19	14	24	16	12	10	.025	26	141			
5.	29.963	30.106	29.824	33	31	37	35	22	24	.162	76	189			
6.	29.795	29.856	29.738	39	34	46	36	34	30	.124	54	305			
7.	29.822	29.829	29.828	39	35	45	40	32	28	.153	39	211			
8.	29.876	29.930	29.904	45	44	52	51	32	34	.293	94	213			
9.	29.878	29.982	29.783	53	51	58	56	45	44	.349	86	127			
10.	30.063	30.114	29.985	43	39	47	43	39	35	.198	63	143			
11.	29.619	29.772	29.453	50	48	55	52	42	42	.313	85	477			
12.	29.878	29.948	29.870	44	40	51	45	39	35	.191	64	401			
13.	29.756	29.862	29.668	49	44	60	52	40	39	.326	63	287			
14.	29.843	29.980	29.756	29	24	48	28	24	29	.128	84	214			
15.	29.981	29.986	29.976	30	25	38	30	24	20	.079	46	123			
16.	30.008	30.024	29.983	37	35	44	39	30	30	.174	78	99			
17.	29.970	29.986	29.953	40	38	40	40	36	37	.206	83	143			
18.	29.893	29.936	29.820	43	43	45	45	39	40	.275	100	146			
19.	29.721	29.762	29.700	49	46	54	50	42	44	.274	81	115			
20.	29.623	29.758	29.523	45	45	50	48	39	40	.298	98	163			
21.	29.976	30.070	29.858	44	39	48	41	42	38	.181	63	125			
22.	29.814	29.918	29.742	43	41	53	48	35	33	.241	83	291			
23.	30.112	30.145	30.028	42	39	47	42	33	37	.195	73	169			
24.	30.051	30.174	29.912	43	39	54	46	35	28	.333	68	123			
25.	29.662	29.712	29.647	54	51	63	58	45	45	.350	83	119			
26.	29.276	29.403	29.095	52	49	61	57	45	44	.319	82	913			
27.	29.582	29.638	29.514	36	33	39	33	34	32	.138	65	221			
28.	29.766	29.868	29.644	41	37	47	42	35	32	.182	72	169			
29.	29.925	29.920	29.613	45	44	50	50	35	33	.282	91	301			
30.	30.274	30.274	29.742	40	35	39	45	32	28	.153	58	421			
31.	30.569	30.569	30.428	28	22	33	25	24	20	.059	26	167			
Mean.....	29.896	30.287	29.598	40	31	47	42	34	32	.186	71	7.388	H. M. 38.35	INCHES. 1.88	INCHES. 4.00

* Readings at 7 A. M., 2 and 9 P. M. Fall of Rain for the month, 1.88 inches.

REPORT OF THE

RECAPITULATION FOR 1889.

1889.	BAROMETER.			THERMOMETERS.						HYGROMETER.		WIND.
	REDUCED TO FREEZING.			MEAN.		MAXIMUM.		MINIMUM.		FORCE OF VAPOR.	RELATIVE HUMIDITY.	
	Mean.	Maximum	Minimum	Dry.	Wet.	Dry.	Wet.	Dry.	Wet.	Mean.	Mean.	Total.
January.....	29.645	29.851	29.529	37	34	42	37	31	21	.157	70	11.021
February.....	29.856	29.881	29.758	28	25	32	29	21	20	.114	72	7.829
March.....	29.624	29.692	29.552	40	35	46	40	35	33	.178	72	9.752
April.....	29.704	29.755	29.648	51	46	58	49	43	39	.266	71	9.051
May.....	29.682	29.711	29.620	67	64	75	70	59	54	.446	76	7.432
June.....	29.733	29.815	29.397	71	65	78	69	63	62	.577	73	6.112
July.....	29.731	29.774	29.695	73	69	81	72	68	66	.638	82	6.288
August.....	29.815	29.842	29.736	71	66	79	69	65	63	.566	76	5.703
September.....	29.746	29.806	29.725	64	62	71	64	60	59	.540	84	8.144
October.....	29.783	29.811	29.707	51	47	57	50	45	44	.288	76	7.634
November.....	29.812	29.885	29.729	46	43	52	47	41	39	.257	73	7.493
December.....	29.896	30.287	29.508	40	31	47	42	34	32	.186	71	7.388
Mean.....	29.752	29.842	29.634	53	49	60	53	47	44	.351	75	93.847

Fall of rain for the year, 55.55 inches. Snow, 23.00 inches.

OSCAR C. WHEDON,
Meteorologist.