

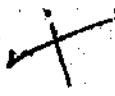
- 7/31/34 98. CHILDREN'S TREASURE HUNT scheduled for next Saturday afternoon, August 4th, at 2 p.m. at JACOB RIIS PARK, Neponsit.
- 8/3 98A Control of Dutch Elm Disease.
- 8/5 99. INSPECTION TRIP covering the Long Island Parkways and Parks for representatives of the Press on Monday, August 6th.
- 8/9 100. 14 ADDITIONAL PLAYGROUNDS WILL BE OPENED BY THE DEPT. OF PARKS IN NEW YORK CITY ON SATURDAY MORNING, AUGUST 11th.
- 8/9 101. The Park Dept. has started RENOVATION OF THE COLUMBUS STATUE MISSING AT COLUMBUS CIRCLE IN MANHATTAN.
- 8/9 102. GOWANUS PLAYGROUND.
- 8/10 103. The first two mile men's OCEAN SWIMMING CHAMPIONSHIP of the Rockaways will be held at JACOB RIIS PARK on Sunday, August 19th.
- 8/15 104/ OCEAN SWIMMING CHAMPIONSHIP - A.A.U.
- 8/15 105. DANCE RECITAL - Maria Theresa - Aug. 17th, 8:30 p.m., PROSPECT PARK.
- 8/18 106. Two Metropolitan SWIMMING CHAMPIONS will meet on Sunday afternoon in a challenge race in the A.A.U. program to be held at JACOB RIIS PARK in Rockaway, beginning at 2:30 p.m.
- 8/22 107. DEPT. OF PARKS WILL OPEN 15 NEW PLAYGROUNDS DURING SEPTEMBER & OCTOBER.
- 8/23 108. COLUMBUS PARK, bounded by Bayard, Mulberry, Park and Baxter Streets is being remodeled to greatly increase the play area.
- 8/25 109. CHILDREN'S DAY OUTING at JACOB RIIS PARK, Monday, August 27, 1934.
- 9/4 110. Opening of Playground, FORT TRYON PARK, Wed. Sept. 5, at 4 p.m. Missing
- 9/5 111. Dept. of Parks announced its plan today for the improvement of JACOB RIIS PARK, Brooklyn, which is to connect with Marine Park, Brooklyn by means of a suspension bridge which will extend over Jamaica Bay. Missing
- 9/6 112. Dept. of Parks announced its plan today for the completion of MARINE PARK IN BROOKLYN, which will be one of the largest parks in the city when completed.
- 9/7/34 113. Venetian Water Carnival, Sept. 7, 8 & 9th at 72nd St. Lake, Central Park.
- 9/8/34 114. Postponed Venetian Carnival, Sept. 11, 12 & 13.
- 9/10/34 115. Letter to all Magistrates of City of N.Y. from Hon. James E. McDonald, Re: Cleanliness & Peddling in Parks.
- 9/12 116. Opening of Bryant Park, Sept. 14, 1934. Missing

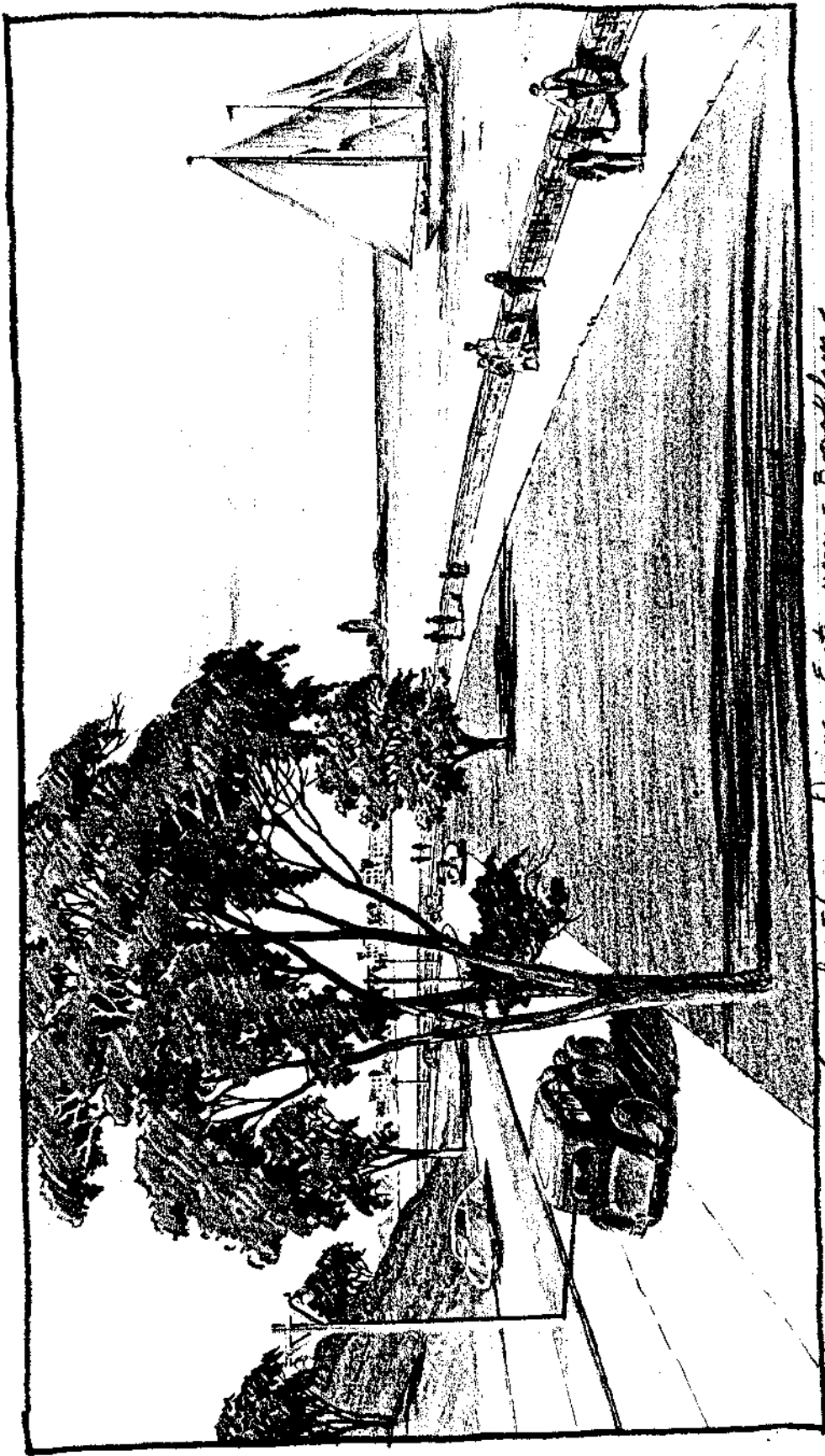
NEWSPAPER RELEASES

- 9/12/34 117. Opening of Roosevelt Park, Sept. 14, 1934.
- 9/18 118. Opening of Zoo, Central Park, Sept. 22nd.
- 9/28/34 119. Installation of Heating Plant in Claremont Restaurant.
- 9/28 120. Harvest Festival at Jefferson Park 9/29/34.
- 9/28 121. Concert on the Mall 9/30/34.
- 9/30 122. Building an addition 18-hole course at Pelham Bay Golf Course.
- 9/30 123. 35 acres of land for park on Welfare Island.
- 10/1 124. Yacht Clubs at Pelham Bay Park ceased to function as clubs today.
- 10/3 125. Instructions in use of new tree moving apparatus will be given to employees of the Park Department.
- 10/4 126. Contractor for section of West Side Express Highway through Riverside Park, bet. 72nd and 79th Streets has started driving piles for the retaining walls.
- 10/8 127. Opening of playground at Essex and Houston Streets, Manhattan.
- 10/8 128. Appointment of Mr. Spargo to position formerly held by Major Crane.
- 10/10 129. Opening of 3 playgrounds on Columbus Day at Baxter, Bayard, Mulberry & Park Streets, Leiv Eiriksson, Corona & 102nd Street, Queens.
- 10/10 130. Harvest Festival at Thomas Jefferson Park
- 10/10 131. Handicraft Exhibit at Macomb's Dam Park.
- 10/10 132. Survey of all signs and commercial advertising in Parks, Parkways in New York City.
- 10/12 133. Harvest Festival, Central Park Mall.
- 10/18 134. Opening of two new Playgrounds at Taaffe Place and Park Avenue, Brooklyn, and Cherry, Monroe & Gouverneur Streets in Manhattan.
- 10/19 135. Unveiling of bronze statue of Dr. J. M. Simms in Central Park.
- 10/8 136. Opening of New Flushing Memorial Playground.
- 10/13 137. Final concert at Forest Park by Mr. Creature.
- 10/8 138. Decision not to erect a swimming pool at St. Albans, new location being considered.

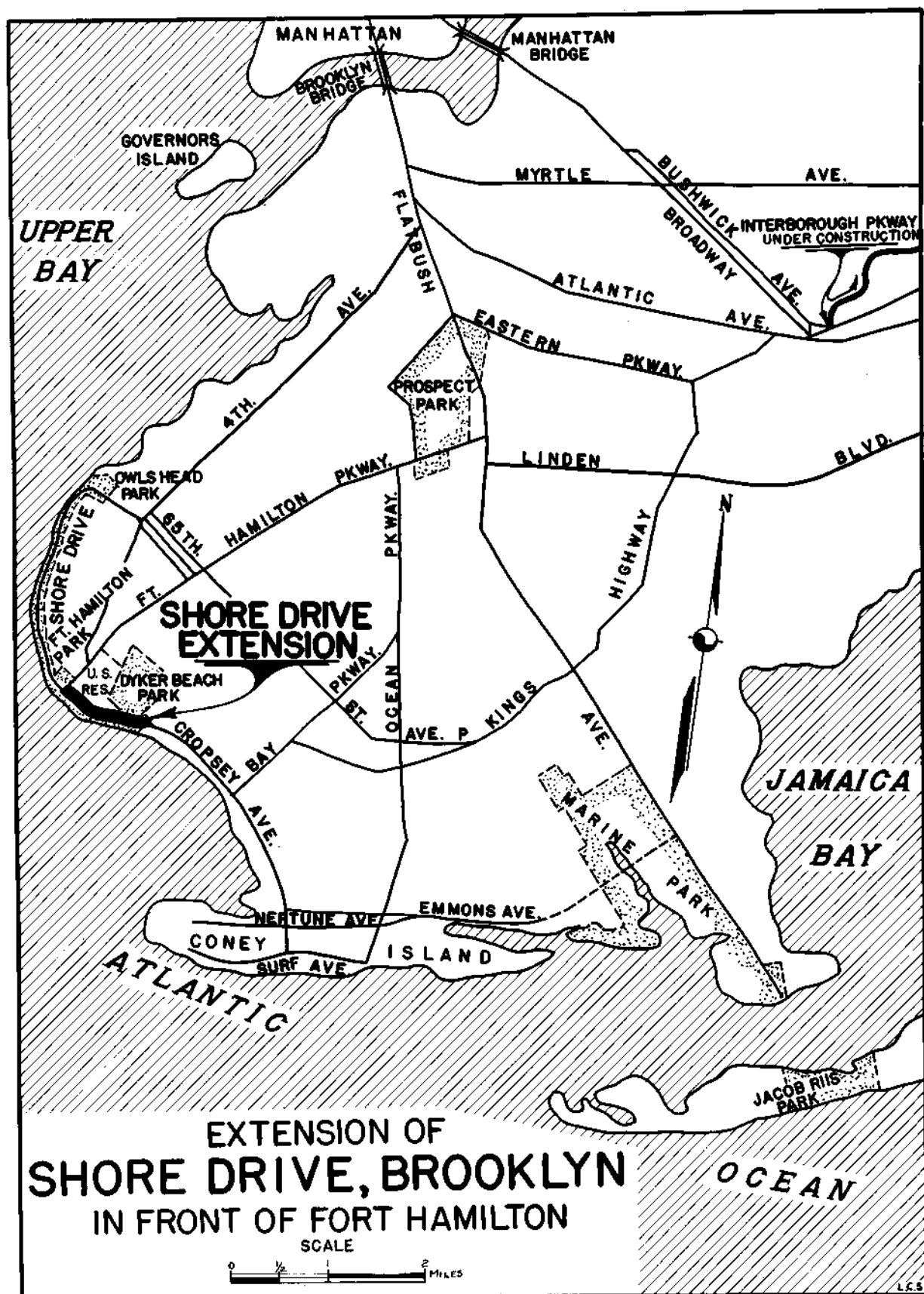
- 10/20/34 139. Dancing on Tuesdays and Thursdays in Prospect Park throughout the Fall and Winter.
- 10/23 140. Erection of Bird Sanctuary in Central Park.
- 10/25 141. Opening of 3 new playgrounds at Sheriff, Broome & Delancey Streets, in New York, Fulton Street & Classon Avenue, in Brooklyn, and Fort No. 4, Sedgwick and Reservoir Avenues, in Bronx.
- 10/28 142. Survey of existing trees on the streets in all the five Boroughs by the Park Department.
- 10/29 143. Memorandum on organization of work relief projects under the supervision of the Department of Parks.
- 10/31 144. Opening of Annual Chrysanthemum Show of Department of Parks at Prospect Park on 11/4/34.
- 11/2 145. Dedication of "Tree of Hope" on November 4, at 7th Avenue & 131st Street.
- 11/3 146. Unveiling of War Memorial dedicated to the Memory of the men who lost their lives in the World War - of the East Side. *missing*
- 11/6 147. Planting of tree to the memory of Madam Marie S. Curie.
- 11/8 148. Opening of two new playgrounds - Dreier-Offerman between Cropsy Avenue and Gravesend Bay, Brooklyn, and Flushing Memorial Playground in Queens.
- 11/10 149. Contest of Home-made wagon championship on Thanksgiving Day to be held in Central Park Mall.
- 11/10 150. Final roller skating contest for Borough of Manhattan, in Central Park.
- 11/15 151. 15th Milestone near 242nd Street and Albany Post Road is to be reset on November 18; ceremonies to be conducted jointly by the Washington Heights Chapter of the D.A.R. *missing*
- 11/15 152. Roller-skating contest - Inter-Borough - to be held 11/17/34.
- 11/15 153. No restriction on artist who paints or sketches for own enjoyment and not commercial venture; make application for privilege if so desired to Borough Director.
- 11/16/34 154. Roller-skating championship and home-made wagon contest to be held 11/17/34.
- 11/19/34 155. Meeting held in conjunction with the Department of Health and Water Supply for the development of area in Coney Island.
- 11/23 156. Announcement of opening of Zoo to be held in Central Park, December 2, 1934, Speakers - Mayor Fiorello H. LaGuardia, Mr. A. E. Smith, Robert Moses, William Hodson, A. Schoelkopf. *X*

NEWSPAPER RELEASES

- 11/23/34 157. Department of Health and Department of Parks announced a joint program for the development of combination playgrounds and health centers.
- 11/28 158. Announcing the opening of the Zoo to be held December 2nd at 2 p.m. in Central Park. 
- 12/6 159. Meeting at Port Authority Building, December 10th to consider the arterial problems of the City of New York and surroundings.
- 12/7 160. Golf courses will close Sunday, December 9, 1934, on account of weather.
- 12/11 161. Park Department purchased a pick-up car, station wagon and a coupe. Mayor LaGuardia will drive one of these cars on December 10th to City Hall.
- 12/19 162. Erection of Christmas trees at various New York City Parks, also dedication of Mayor LaGuardia at City Hall Plaza on Friday.
- 12/20 163. Extension of Shore Drive Extension in Brooklyn - Bids opened.
164. Climatic conditions and vandalism made it necessary for the Park Department to protect the statue of D. Glasgow Farragut. *MISSING*
- 11/17 165. Annual Chrysanthemum Show of Department of Parks at Forest Park.
166. Formal permission of artists for sketching purposes in park not essential but letters granting the privilege will be furnished those who make application to Borough Directors.
- 12/29 167. Golf courses closed owing to cold weather.
- 12/31 168. Progress on park program in 1934 and program for 1935. *MISSING*



View of Shore Drive Extension - Brooklyn



The Department of Parks is erecting fourteen 50-foot Norway Spruce Trees in the parks throughout Greater New York in preparation of the Christmas festivities to be conducted under the auspices of the City of New York. These Community Christmas Trees which will be dedicated by Mayor Fiorello H. LaGuardia on Friday, Dec. 21st, at 4:30 p.m., will be located as follows:

- MANHATTAN: City Hall Plaza
Mall, Central Park - Off 5th Avenue at 65th Street
Roosevelt Park - Chrystie and Forsyth Streets at Stanton Street
Thomas Jefferson Park - 111th to 114th Street at First Avenue
- QUEENS: Kings Park - Jamaica Avenue and 150th to 153rd Streets
Forest Park - Myrtle Avenue and Park Lane South
Northern Boulevard - Opposite Farrington Street
- BROOKLYN: Borough Hall
Grand Army Plaza - Prospect Park
Leiv Eiriksson Park - 66th to 67th Streets between 4th and 5th Avenues.
- BRONX: Joyce Kilmer Park - Grand Concourse and 161st Street
Claremont Park - Mt. Eden, Webster and Teller Avenues
- RICHMOND: Silver Lake Park - Victory Boulevard and Forest Avenue
Borough Hall, Barrett Park - Triangle east of Borough Hall on Bay Street, St. George

Mayor Fiorello H. LaGuardia will deliver an address at City Hall Plaza, where the principal exercises will be held. The ceremonies from this point will be broadcast by public address systems to all of the other locations, with the exception of Thomas Jefferson Park, where special ceremonies will be held by the Mayor and the official party after the conclusion of the program at City Hall Plaza. Commissioner Robert Moses will act as chairman.

The program will open with a short concert by the Park Department Band, followed by Christmas Carols sung by a Mixed Choir of 75 trained voices from the Concert Division of the Department of Public Welfare, augmented by children from the playgrounds of the Department of Parks

(Continued)

Page 2.

who have been trained especially for these exercises. Commissioner Moses will then introduce Mayor LaGuardia who will formally dedicate the trees and, by pressing a button, illuminate the thirteen trees simultaneously.

This program will be broadcast by Station WNYC and a network of twenty-two additional stations extending as far West as Missouri and including a short-wave station in Providence which will carry the main exercises abroad.

At the conclusion of the principal exercises the programs will continue independently at each point where they will be in charge of the Borough Director of the Department of Parks or his designate. Christmas Carols of different countries will be sung in the native tongue by the children, who will be in proper costume made by the Playground Directors. At the conclusion of the exercises at City Hall Plaza, Mayor LaGuardia and the official party will proceed to Thomas Jefferson Park, where a special band concert will be given between 5 p.m. and the arrival of the Mayor. The ceremonies here will consist of the dedication and illumination of the Christmas Tree by Mayor LaGuardia, who will also formally break ground for the swimming pool which is to be built at this point. The singing of the National Anthem will conclude these ceremonies.

With the exception of Christmas Day, carols will be broadcast each day thereafter from Station WNYC to all fourteen locations between 12 noon and 12:15 p.m., to and including Friday, December 28th.

The trees will be decorated with electric lights of gay and varied colors.

This will be the first time that the City has provided Community Christmas Trees on this scale.

-End-

DEPARTMENT OF PARKS
Arsenal, Central Park
Tel. Regent 4-1000

FOR IMMEDIATE RELEASE
December 10, 1934.

161

The Park Department recently purchased three new cars,
a pick-up car, a station wagon and a coupe.

Mayor LaGuardia will drive one of these cars to City
Hall, leaving the Mayor's house at 9:00 and arriving at City Hall at
9:15 a.m.

Released to the following by order of Mr. Cruise:

New York City News Association
Daily Mirror
Wide World
Acme
Associated Press
International News Service
Fox Movietone News
Paramount News
Pathe News

DEPARTMENT OF PARKS
Arsenal, Central Park
Tel. Regent 4-1000

FOR IMMEDIATE RELEASE
December 7, 1954.

160

The Department of Parks states that in view of the open weather now existing the golf courses under its jurisdiction will not close on Sunday, December 9th, as recently announced, but will remain open until further notice. During this period the winter rules will obtain.

Phoned to the following, as directed by Mr. Cruise:

City News Association
Daily Mirror
Bronx Home News
Staten Island Advance
Long Island Daily Star
Long Island Daily Press

159

Senator George Fearon, Chairman of the Joint Legislative Committee appointed pursuant to a resolution of the New York State Legislature adopted April 27, 1934, has arranged to hold a meeting of the Committee in New York City on Monday evening, December 10th at 8:30 in the Port Authority Terminal Building at 111 Eighth Avenue. This meeting will be held to consider the arterial problems of the City of New York and its surroundings. It has been arranged at the invitation of Mayor LaGuardia. Mayor LaGuardia has designated Park Commissioner Robert Moses to arrange the details of the meeting and to assemble the material on the connections between the City arteries and the suburban highways and parkways adjacent to the City.

The Joint Legislative Committee to report on road-building policies is composed of six State Senators, seven State Assemblymen, with the State Superintendent of Public Works and the State Commissioner of Highways ex officio members.

Mayor LaGuardia, the President of the Board of Aldermen, who is also Chairman of the City Planning Committee, Commissioner Moses, the five Borough Presidents, the Chief Engineer of the Board of Estimate and the Police Commissioner will present the City's program of traffic arteries at the meeting.

The Chief Engineers of the Board of Estimate, the five Boroughs and the Park Department, and representatives of the City Planning Committee and the Police Commissioner met with the Chief Engineers of the Port of New York Authority, the Long Island State Park Commission and the Triborough Bridge Authority and the District Engineer of the State Department of Public Works in charge of the Metropolitan District, to formulate a plan to present to the Joint Legislative Committee. The program worked out by these Engineers has been approved by the Borough Presidents and the other Department heads interested.

Continued.

The purpose of the meeting is to present a system of through traffic arteries in New York City to connect with the State highway and parkway system outside the City's boundaries. It is not intended to ask State aid for the construction of local streets or boulevards but to ask for the construction from State highway funds of a system of trunk arteries to carry traffic through the congested metropolitan areas. The great difference between the proportion of taxes paid in New York City to the proportion of money spent on traffic relief in New York City will be pointed out.

Civic associations and other organizations interested in the discussion are invited to be present at this meeting.

-End-

DEPARTMENT OF PARKS
Arsenal, Central Park
Tel. REgent 4-1000

FOR IMMEDIATE RELEASE
November 28, 1934

The new Central Park Menagerie will be formally opened to the public on Sunday, December 2nd, at 2 o'clock in the afternoon. Commissioner Robert Moses will deliver the opening address. Mayor Fiorello H. LaGuardia, former Governor Alfred E. Smith, the Honorable Alfred H. Schoellkopf, Chairman of the Temporary Emergency Relief Administration of the State of New York and the Honorable William Hodson, Commissioner of the Department of Public Welfare of the City of New York, will also speak during the ceremonies, which include the presentation of the key to the zoo to the Mayor followed by his official opening of it to the public.

The story of the very early days of the old Zoo is an interesting one and the building of the new Zoo, which was done entirely with Work Relief forces and material furnished by the Welfare authorities is equally interesting.

Search of the archives of the Department uncovered some interesting facts and amusing drawings of some "Temporary Buildings to shelter birds and mammals formerly kept in the Arsenal Building approved by H. Hilton, September 19, 1870 - to be executed and carried out by Professor Hawkins" and containing the following instructions: "Mr. Crane will plan details employing Hawkins for the purpose." The sketch shows two large cages for birds and additional enclosures for carnivora.

The first annual report of the Board of Commissioners of the Department of Public Parks, dated December, 1871, contains the following statement:

"A series of buildings surround the Museum, ornamental in design and convenient to the public. There are: one for the carnivora; one for the birds and monkeys; open-air sheds for the bears, wolves, etc.; roomy and open-air cages for the eagles, domestic fowls, etc; an inclosed building for elephants, camels, and various tropical animals, and (in process of erection at the west of the Museum buildings) a larger structure intended for carnivora, tropical cattle, etc."

Among the earliest contributors to the old Central Park Zoo were August Belmont who gave two Virginia Deer and three Canadian Wild Geese in May of 1870 and Hamilton Fish who dedicated six wild Turkeys in October of the same year. These dedications are recorded in the records of the Department. P. T. Barnum and George F. Bailey loaned "rare specimens" to the City during the Zoo's early life.

The old structures that were demolished by Work Relief Forces were all made of wood. The light was poor and they were unsanitary firetraps. The Monkey House had been converted into a hot dog stand and the bear dens were perched on the side of a rock outcropping. There was no orderly arrangement or supervision of animals. The hippopotami shared the same quarters with the lions.

The new Central Park Menagerie was designed by Aymar Embury, II, with the assistance of the staff of architects of the Park Department. It is simple, masonry construction. The exterior walls are of brick and all of the interior walls are buff tile. The sculptured friezes by F. G. Roth are excellent. Mr. Roth and the sculptors who assisted him carved these figures of animals into the limestone by hand and did not follow the usual practice of furnishing a clay model to stone carvers, who actually work on the scaffolds.

* * * * *

DEPARTMENT OF PARKS
Arsenal, Central Park
Tel. Regent 4-1000

FOR IMMEDIATE RELEASE
December 23, 1934

167

Mr. J. Hunter Field instructed me to release the following announcement to the Press by telephone. This was done.

The Park Department announces that owing to the continued cold weather, effective and beginning Wednesday morning, Jan. 2, 1935, all Golf Courses under its jurisdiction will be closed until next Spring.

Phoned City News Association
Queens Papers
Bronx Home News

Dec. 23, 1934

-End-

DEPARTMENT OF PARKS
ARSENAL, Central Park
Regent 4-1000

166

The Department of Parks states that it is receiving a rather large number of letters from artists inquiring whether permits are necessary to paint and sketch in the city parks. The present policy of the department places no restriction on the artist who paints or sketches for his own enjoyment and not as a commercial venture. While formal permission is not required, letters granting the privilege will be furnished those artists who make application for them to the Borough director of the Department of Parks, viz:

MANHATTAN: Swedish Cottage, 79th st. and West Drive, Central Park
BRONX: Zbrowski Mansion, Claremont Park
BROOKLYN: Litchfield Mansion, Prospect Park
QUEENS: The Overlook, Forest Park, Kew Gardens
RICHMOND: Field House, Clove Lakex Park, Victory Boulevard
& Clove Road, West Brighton.

-end-

165

The annual Chrysanthemum Show of the Department of Parks, Queens, held at the Greenhouses at Woodhaven Boulevard and Myrtle Avenue in Forest Park, will be open to the public starting Saturday, November 17, 1934, from 10:00 A.M. to 9.00 P.M.

The are approximately 5,000 plants on exhibition, comprising 18 varieties. Prominent among them are the bronze, white, yellow and pink Turners, pink and white Chieftains, Crimson Glow, L.H.Burlak, Gladys Pierson, pink and white Seiderwitz, Mrs.David Roy, Besty Ross, Tom Brown, pink, white and golden Chadwick and several varieties of anemones.

The above plants have been banked and set up in pyramids to show off the blooms to the best advantage.

The show will continue up to Thanksgiving.

11/14/34 Mr.Cruise handed the above to me stating that he authorized the Queens office to release this direct.

DEPT. OF PUBLIC WORKS
Arsenal, Central Park
Tel. Regent 4-1000

FOR IMMEDIATE RELEASE
December 20, 1934.

163

163

EXTENSION OF SHORE DRIVE IN BROOKLYN

Bids were opened today by the State Department of Public Works for starting construction of the extension of Shore Drive in Brooklyn, from the existing dead end of the Drive at Fourth Avenue, along the shore line of Fort Hamilton to Dyker Beach Park. The Welsh Brothers Improvement Corporation of Long Island City submitted a low bid of \$257,032.75.

The section of Shore Drive now to be constructed is one mile long and when completed will provide two 3-lane roadways separated by a grass panel. A pedestrian promenade will be provided on the Narrows Bay side of the parkway. The entire right-of-way will be landscaped in the same way as other State parkways. The land necessary for this project was dedicated by the federal government to the City of New York in 1926 after years of discussion and agitation. Except for an unfinished sea wall, nothing has been done on this project since its inception.

Work to be done under the new contract will consist of the construction of about 3,500 feet of sea wall along the shore line fronting Fort Hamilton and the placing of about 90,000 cubic yards of fill for the roadway. The sea wall will be constructed of concrete, faced with granite, and will be built on top of the present unfinished rip-rap wall. The contract will provide employment for about 250 men for a period of about five months.

The extension of the Shore Drive now to be constructed is a part of the old comprehensive plan for a circumferential boulevard which will eventually connect the existing Shore Drive with Marine Park, Brooklyn, by way of Cropsey and Emmons Avenues. The Emmons Avenue section is under construction by Borough President Ingersoll.

DEPARTMENT OF PARKS
ARCEVAL, CENTRAL PARK
REGENT 4-1000.

FOR RELEASE
FRIDAY November 23, 1934.

157

DEPARTMENT OF HEALTH
139 Centre Street
Canal 6-1600

157

TWO DEPARTMENTS JOIN HANDS

The Department of Health and the Department of Parks announced today a joint program for the development of combination playgrounds and health centers.

The Department of Health has secured a loan and grant from the Public Works Administration for the construction of health centers throughout the City, but no money is available for the purchase of additional land. It is necessary for the Health Department to find vacant City owned lands to build these health centers. No City owned land could be found in the East Harlem district except an area on East 115th Street, between Lexington and Third Avenues, which was acquired for recreational purposes under the jurisdiction of the Department of Parks. Plans for the demolition of the existing tenement structure and the construction of a playground for small children on this area had been made by the Park Department. The Departments of Parks and Health joined in a complete survey of the whole East Harlem district and reached the conclusion that the only City owned area available for either a playground or a health center was this parcel under the control of the Park Department. The plans for the Health Department's building were partially completed and the plans for the Park Department's playground were finished. The two Departments discussed the relative values of the two developments and neither was willing to abandon its plans.

It was finally agreed to use the area by both Departments. The Department of Health has agreed to construct its building in such a fashion to allow for the use of the roof of the two-story building for playground purposes. This playground will utilize the same area previously planned when the site was selected. Access to the playground will be provided without the necessity of going through the building. The entrance will be planned to make it convenient for the children of the school adjacent to the plot to have easy access to the play area. This unique construction will satisfy the needs of the Department of Health and the Department of Parks.

This will be the first roof playground constructed by the City of New York and will include a wading pool, shrubs and trees in pots, outdoor gymnasium apparatus and swings.

Commenting on the plans now under way, Health Commissioner John L. Rice said: "I believe that the joint development we have undertaken will be profitable for all concerned.

Certainly our health centers will be more attractive by the landscaping and the recreation facilities provided by the Park Department. With careful attention to planning, the activities of the health center and those of the recreation area can be made to complement each other admirably.

In our health work we are constantly facing the need for supervised recreation for young children who should not undertake the strenuous play activities of normal childhood. Recreation areas, such as this, will help us find a way for safe and healthful recreation for these children."

Since this agreement on a joint development by the two Departments, a study has been undertaken to see to what extent this happy combination of activities can be applied to the other health centers which the Health Department is planning to erect. Already it seems likely that a number of locations are well adapted to this cooperative combination.

Commissioner Robert Moses said; "The Park and Health Authorities of the City have essentially the same objectives. I am happy to cooperate with Dr. Rice."

-end-

DEPARTMENT OF PARKS
ARSENAL, CENTRAL PARK
Tel. Regent 4-1000

182 136
FOR IMMEDIATE RELEASE
Nov. 23, 1934

The new Zoo in Central Park, which replaces the former jungle of unsightly firetraps that had stood for sixty-four years, will be formally opened on Sunday, December 2nd, at 2:00 P. M. The exercises will be held in front of the Arsenal, Fifth Avenue at 64th Street. The speakers will be Mayor Fiorello H. LaGuardia, former Governor Alfred E. Smith, Commissioner of Parks Robert Moses, William Hodson, Commissioner of Public Welfare, and Alfred H. Schoelkopf, Chairman of the New York State Temporary Emergency Relief Administration.

Two hundred and fifty children representing the various playgrounds in Manhattan will occupy special reserved seats. Other guests will include City and State officials and members of the New York State Council of Parks, who will be in the City for a regular monthly meeting. Music will be furnished by the Park Department band and by the uniformed Pipe and Drum Corps of P.S. 71, of the Bronx.

Following the ceremonies the nine new buildings will be opened for inspection. They are of modern construction and are fireproof. They were designed to harmonize with the architecture of the Arsenal, which has been stripped of its many coats of dingy paint, revealing a fine old brick structure. The brick used in the new buildings was selected for its resemblance to the walls of the Arsenal, with slate roofs and limestone trim and friezes. Sculptors have carved panels of animals in the friezes.

The new menagerie is built around a quadrangle, the center of which contains a sunken garden containing a seal pool and flying cages. A large concession building with an open air terrace for dining occupies the western side of the square, and is connected to the flanking animal houses by arcaded passageways. In the northwest corner bear dens have been located among rugged outcroppings of ledge rock. Grouped on either side of the main entrance paths which

lead to the Zoo from the 59th Street gate are smaller houses which contain the horned animal collection.

The entire construction program on the Zoo has been done with labor and materials supplied by the Works Division of the Department of Public Welfare. The planning was commenced on February 5th of this year and completed in sixteen working days by a staff of designers, engineers and draftsmen who were assigned to the Department of Parks by the Civil Works Administration.

Work started on the construction as soon as the plans were in sufficient shape to give the engineers the sites of the buildings. The Department encountered a collection of antiquated buildings, dating back to 1870, which were structurally dangerous, unhealthy, unsanitary and entirely inadequate for housing wild animals. It was found necessary to move many of animals to the Brooklyn Zoo in Prospect Park, while others were accommodated in such buildings as could remain temporarily or were penned in runs nearby. They have now been brought back and installed in their permanent quarters, with certain of the animals from the Brooklyn Zoo, which is being demolished. When the new buildings in Prospect Park are opened in the early spring of 1935, these visitors will be returned and other animals secured to replenish the Central Park Zoo.

DEPARTMENT OF PARKS
Arsenal, Central Park
Tel. Regent 4-1000

155
FOR RELEASE
Monday, November 19, 1934.
155

A meeting was held in the offices of the Department of Parks at 5th Avenue and 64th Street, for the purpose of preparing a comprehensive plan for the development of the property at Coney Island, bounded by Neptune Avenue and Gravesend Bay, West 31st and West 23rd Streets.

At the present time, this 33 acre tract is under the jurisdiction of the Department of Parks, the Department of Docks, the Borough President of Brooklyn, the Board of Education and the Department of Water Supply, Gas and Electricity.

The most easterly block of property between West 23rd and West 24th Streets is under the jurisdiction of the Board of Education and was to be the site of a proposed new school. This property is bounded on the east by an industrial development, and on the west by property now under the jurisdiction of the Department of Water Supply, Gas and Electricity. It was the intention of the Water Department to construct a pumping station on this site.

The property between 25th and 31st Streets is under the jurisdiction of the Department of Parks, and plans are now being prepared for the development of this area. Along the waterfront, the Department of Docks planned a 60 foot marginal road and this area has been held by the Department of Docks to be used for this purpose in the future. South of this 60 foot marginal road, and abutting it, there is another proposed street, varying in width from 60 to 80 feet, which was to be built by the Borough President. The Borough President also planned to extend West 25th Street northerly from Neptune Avenue to this proposed waterfront street.

(Continued)

As a result of this meeting a comprehensive plan has been decided upon. The Department of Water Supply, Gas and Electricity will erect its pumping station on the most easterly block between 23rd and 24th Streets adjacent to the industrial area. The Board of Education will use the property between 24th and 25th Streets, and the Department of Parks will develop the balance of the area. The Borough President of Brooklyn has agreed to discontinue the proposed extension of West 25th Street, as well as the proposed street along the waterfront, and the Commissioner of Docks agrees to abandon his proposal for the marginal street. The Department of Parks agreed to release the property on the north side of Neptune Avenue and the easterly side of West 31st Street, to allow for a widening of these thoroughfares, in order to accommodate the traffic which was originally proposed to be carried along the marginal or waterfront street.

This new plan is arranged so that the pumping station will act as a buffer between ^{the} industrial area and the property of the Department of Parks and the Board of Education; it also gives it the seclusion needed for this project. In addition, it places the school in a much better location, nearer to the center of population, and gives it a fine setting adjacent to the park.

The Department of Parks in turn is planning its play areas so as to serve the children attending the school, as well as the other children of the community.

A committee of three architects, one from each of the three Departments (Water Supply, Board of Education and the Department of Parks) are to confer on this project, so that the architecture of the buildings to be erected will harmonize. The Department of Parks also offers the services of its Landscape Architects to prepare landscape plans for the entire area.

-End-

154

Nov. 16, 1934.

To - Mr. Nelson

From - J.V. Mulholland

SUBJECT:

Roller Skating championships, Center Drive,
Central Park.
Homemade Wagon being constructed at Roosevelt
Park, (both of these events Saturday, Nov. 17th.)

As per telephone call from Mr. Mulholland,
please have photographers at the Center Drive,
Central Park, at 2 P.M. to take pictures of the
roller skating championships.

Also please have pictures taken of a boy or boys
making their own wagons at Roosevelt Park tomorrow
at 11 A.M.

J.V. Mulholland
per I H M

DEPARTMENT OF PARKS
Arsenal, Central Park
Regent 4-1000

FOR IMMEDIATE RELEASE
November 15, 1934.

153

The Department of Parks states that it is receiving a rather large number of letters from artists inquiring whether permits are necessary to paint and sketch in the city parks. The present policy of the department places no restriction on the artist who paints or sketches for his own enjoyment and not as a commercial venture. While formal permission is not required, letters granting the privilege will be furnished those artists who make application for them to the Borough Director of the Department of Parks, viz:

MANHATTAN:- Swedish Cottage, 79th St. & West Drive,
Central Park.

BRONX: - Zbrowski Mansion, Claremont Park.

BROOKLYN:- Litchfield Mansion, Prospect Park.

QUEENS:- The Overlook, Forest Park, Kew Gardens.

RICHMOND:-Field House, Clove Lakes Park, Victory
Boulevard & Clove Road, West Brighton.

-end-

152

The Inter-Borough Playground Roller-Skating Finals will be held under the auspices of the Division of Recreation of the Department of Parks on the Center Drive in Central Park on Saturday, November 17th, at 2 p.m. The boys and girls who finished first, second and third in each class will compete in the finals for the championship, viz,:

Girls 4'8" Class 100 Yards

Lillian Seawell	from	Manhattan	John Jay Playground
Tessie Annis	"	Brooklyn	Gravesend "
Gloria Amato	"	Bronx	Macombs "

Boys 4'8" Class 220 Yards

A. Bujnowski	"	Manhattan	East 17th St "
M. Tartarsky	"	Brooklyn	Williamsburg "
F. Goetz	"	Bronx	St. Mary's West "

Girls 5'3" Class 220 Yards

Anna Shimonski	"	Manhattan	Roosevelt "
Margaret Lyna	"	Brooklyn	Gravesend "
Josephine Rubino	"	Bronx	Macombs "

Boys 5'3" Class 440 Yards

V. Galgano	"	Manhattan	Roosevelt "
L. Meli	"	Brooklyn	Bay Parkway "
V. Bergstrom	"	Bronx	St. Mary's West "

The program will include two special events; an 830 yard roller-skating race open to girls up to 18 years of age; and a similar event open to boys of 18 years or under.

150

Nov. 10, 1934.

To - Mr. Nelson

From James V. Mulholland

Subject - Roller Skating (Final Contest)

Manhattan

Kindly notify newspapers regarding the final roller skating contest for the borough of Manhattan, conducted by Recreation Division, Department of Parks.

The races will take place on the Center Drive near the Mall, 72nd St. & Central Park, Saturday November 10th at 2 P.M.

James V. Mulholland
Director of Recreation.

DEPARTMENT OF PARKS
Arsenal, Central Park
Tel. Regent 4-1000

FOR IMMEDIATE RELEASE
November 10, 1934

148

Announcement was made yesterday by the Division of Recreation, Department of Parks, of the conduction of the first home-made wagon championship for children of the city, on Thanksgiving Day morning, on Central Park Mall. Medals and trophies for the preliminary events in the various borough playgrounds and for the finals have been donated by Israel Sachs, head of the Sachs Foundation.

Three classes in the home-made wagon contest will prevail: teams of two in the 6-8 year group; 9-11 and 11-13 years. Another feature will be a mixed age group of from 6-13 years which will permit brother and sister or two members of the same family to compete. All wagons must be made by contestants.

Three events for scooter races are also on the program.

-End-

148

The Department of Parks will open two new playgrounds on Friday, November 9th, making a total of 37 opened this year.

125 The Dreier-Offerman Playground between Cropsey Avenue and Gravesend Bay at Bay 46th Street in the Borough of Brooklyn, will be opened at 3 o'clock. Mayor LaGuardia, Borough President Ingersoll and Mrs. H. Edward Dreier will speak at the dedication ceremonies.

The land for the playground was originally purchased by Mrs. Theodore Dreier as a site for the German Home for Recreation for Women and Children and used for 25 years as a recreation and recuperation home for mothers and children. Settlement houses and churches made provision for the work that the German Home was doing and the affairs of the Home were liquidated. A committee composed of Mrs. G. William Rasch, President, Mrs. Arthur Delmhorst, Mrs. H. Edward Dreier, Miss Mary Dreier, and Miss Minna Von Nostitz arranged to have the land turned over to the City and gave to the Park Department \$20,000 to be used for the construction of a playground. This sum was used to purchase material for the construction of the recreational plant that is being opened tomorrow.

The playground has a wading pool and a two-story brick field house. The sand tables, seesaws, slides and swings for small children are located on the Bay side of the building. Apparatus for older children is located in the space adjoining Cropsey Avenue.

The Flushing Memorial Playfield in Queens will be opened at 4:00 P.M. Mayor LaGuardia, the President of the Borough of Queens and Mr. John Holley Clark, Jr. will speak.

(Continued)

The land for the Flushing Memorial Playfield was given to the City by the Memorial Field of Flushing, Inc., for the development of a playground. Labor and material were supplied from Work Relief funds.

A one-story field house of Colonial design is located in a corner of the playground. Eight tennis courts, eight handball courts and two basketball courts are provided in addition to swings, seesaws, sand tables and other outdoor gymnasium equipment.

The Department of Parks also announces that nineteen playgrounds and parks, in addition to the two to be opened tomorrow, will be opened in the various boroughs by March 2nd. One new and completely equipped playground or park will be opened each week beginning November 10th, with the opening of Tompkins Park, Brooklyn. Other November openings are the unveiling of the East Side Memorial, Union Square, Manhattan on November 11th; dedication of the 15th Milestone, Van Cortlandt Park, Bronx, November 18th and City Island^{Park} in the Bronx.

There will be six openings during December, viz.: the opening of the new Central Park Zoo, Manhattan, on December 1st; playground at Rutgers and Henry Streets, Manhattan, on the third; playground at Harbor Road and Richmond Terrace, Richmond, on the tenth; two more blocks at Leiv Eiriksson Park, Brooklyn, on the seventeenth; Chisholm Playground, Queens, on the twenty-fourth and the Highbridge Playground, Manhattan, on the thirty-first.

The Playground at Vandervoort and Cherry Streets, Brooklyn, will open January 7th; Highbridge Playground at 180th Street, Manhattan on January 14th; St. James Park and Playground, Bronx on January 21st and the dedication of the Flushing Memorial Field Gates, Queens, on January 28th.

(Continued)

Three openings are scheduled for February, viz.: Clove Lakes Park, Richmond, on the fourth; J. Hood Wright Park and Playground, Manhattan, on the eleventh; playground at Union and Van Brunt Streets, Brooklyn, on the eighteenth, and the German Memorial Park, Manhattan on the twenty-fifth.

The Prospect Park Zoo in Brooklyn will be opened March 2, 1935.

Of these nineteen centers for recreation seven will be in the Borough of Manhattan, three in the Bronx, five in Brooklyn, two in Richmond and two in Queens.

-End-

DEPARTMENT OF PARKS
The Arsenal, Central Park
Telephone: Regent 4-1000

147
FOR IMMEDIATE RELEASE
November 6, 1934.

A memorial tree is to be planted in City Hall Park, Manhattan, on Wednesday afternoon, November 7, at one o'clock, under the auspices of the Department of Parks as an enduring tribute to Madam Marie Sklodowska Curie and her long and tireless energy in discovering radium and making its benefits available to humanity. November 7 marks the sixty-seventh anniversary of her birth.

The Reverend Felix F. Burant, Pastor of St. Stanislaus Church and Chairman of the United St. Stanislaus Societies, New York, suggested the planting of the tree, with suitable ceremonies, to the Department of Parks.

The exercises will start at 12:45 p.m. with selections by the Park Department Band. Father Burant will make the formal presentation of the tree and dedicate it to the memory of Madam Curie, after which the children of St. Stanislaus Parish School will sing the Polish National Anthem. Mayor Fiorella H. LaGuardia will accept the tree in behalf of the city. At the conclusion of Mayor LaGuardia's address the children will sing The Star Spangled Banner and then place a wreath at the base of the tree, an Oriental Plane. The rendition of the French National Anthem will conclude the exercises.

The program will be broadcast by Station WNYC.

-End-

DEPARTMENT OF PARKS
Arsenal, Central Park
Tel. Regent 4-1000

FOR IMMEDIATE RELEASE
November 2, 1934

The Department of Parks will plant and dedicate a new elm to perpetuate the old "Tree of Hope" at Seventh Avenue and 131st Street, New York City, which it was necessary for the department to remove, and around which centered the existing legend of the old tree's inspirational qualities.

The ceremony will be held on Sunday, November 4th, beginning at 2:30 p.m. Selections by Fred Simpson's Monarch Elks Band will open the program, followed by a dance by Bill Robinson and his chorus. Mr. Robinson will also speak during the exercises, at the conclusion of which the procession will proceed to the playground on West 150th Street, West of Seventh Avenue, to participate in the opening at that point where the program, starting at 4:10 p.m., consists of selections by the band, the flag raising ceremony and the opening to the children of the playground facilities, which include a jungle gym, swings, see-saws and handball courts.

The program of the dedication of the new "Tree of Hope" will be broadcast between 3 and 3:45 p.m. by Stations WNYC, WNEW, WOV and WOR.

-End-

144

DEPARTMENT OF PARKS
Arsenal, Central Park.
Tel. Regent 4-1000

FOR RELEASE:
Wednesday, October 31, 1934.

The Annual Chrysanthemum Show of the Department of Parks at the greenhouses in Prospect Park, Brooklyn, will open to the public on Sunday, November 4th, at 10 a.m. The exhibit will be open every day thereafter, as long as the blooms last, between the hours of 10 a.m. and 4 p.m.

A large number of varieties of chrysanthemums will be shown, including the Pocketts, in three colors; the Turners, in four colors; and the Armistice Day, Vermont, Rita Mitchell and the Majestic varieties. The display will also contain an extensive collection of Pompons as well as the Anemone class of Chrysanthemums. The shades will vary from white to dark bronze.

-End-

243 143 143
DEPARTMENT OF PARKS
Arsenal, Central Park

Regent 4-1000

RELEASE FOR MORNING
PAPERS, MONDAY,
OCTOBER 29, 1934.

MEMORANDUM ON ORGANIZATION OF WORK RELIEF PROJECTS
UNDER THE SUPERVISION OF THE DEPARTMENT OF PARKS

MEMORANDUM ON ORGANIZATION OF WORK RELIEF PROJECTS
UNDER THE SUPERVISION OF THE DEPARTMENT OF PARKS

On January 19th of this year Chapter 2 of the Laws of 1934 amending the New York City Charter abolished the five former Park Departments and set up one single Department of Parks under one Commissioner. I took office as Park Commissioner under Mayor LaGuardia and became responsible for the development, maintenance and operation of the park system in the five boroughs.

I found the personnel of the Department undisciplined and in most instances working under untrained and unskilled supervision and with no orderly plan of operation. The technical staff of the Department was unfitted for the work it was supposed to perform. Three architects, two landscape architects, eleven inspectors of stone masonry, nine inspectors of regulating, grading and paving, thirteen topographical draftsman, twelve assistant engineers and a few more engineering employees of various titles ~~were~~ attempting to plan work, supervise labor, purchase material and otherwise control an army of 69,000 C. W. A. workers. These C. W. A. men were supposed to be doing laboring work. Their foremen were without proper qualifications for their jobs. The superintendents were even more unprepared to do the work assigned to them. These field supervisors were mostly white collar employees who were placed in charge of construction projects on the theory that men unable to do common labor work could at least stand around and watch

laborers dig and rake leaves.

The parks were in a disgraceful condition. Fences, playground equipment, iron benches, steel bridges, piers and other iron work had been allowed through neglect to rust. Walks, paths and roadways were acres of broken pavement. Lawn areas were meadows of weeds. Thousands of trees were butchered or hacked down to provide firewood for political favorites. There was not a single park building in the City that did not need immediate repairs and painting. Roofs leaked and twenty percent of the toilets in the comfort stations were closed because of missing parts. The zoos in Central Park and Brooklyn were filthy fire traps. The keepers were found with shotguns in their laps to shoot down wild animals in case of fire. A dungeon-like, unsanitary bath-house was being erected in Orchard Beach in Pelham Bay Park blocking the proper use of the beach. An elaborate manor was being built for a club house at Dyker Beach that contained sumptuous apartments for the superintendent of the park and poorly planned and inadequate public rooms. Great gashes were cut through woodlands to provide drives through parks that did not recognize the simple fundamental demands of parkway design. Asphalt walks and roadways were being constructed without proper foundations and were heaving from frost action before the jobs were completed.

The relief workers in the parks had been recruited through the National Reemployment Service and passed

through the Civil Works Administration to the various city departments. The Park Department inherited 69,000 of them. They were working under the fiction that they were Federal employees because they were paid entirely from Federal funds. There is no evidence that the former five Park Commissioners assumed any responsibility to get work out of them. They were falling all over each other with no tools to work with, no material to build into permanent improvements and, except in a few isolated instances, no general directions as to what to do. Six thousand of them were on the ash dumps below the railroad tracks on Riverside Drive standing in snow, pecking at frozen cinders; five thousand of them were on the sand wastes of Marine Park in Brooklyn, huddled around fires on the marsh lands; two thousand of them were on the bridle paths of Central Park with nothing to work with; and one thousand of them were on a sand reef off the shore on Staten Island pushing wheelbarrows of sand and dumping it overboard to be washed away at the cost of five dollars per cubic yard. Twenty thousand of them could not be accounted for at all in any reports that reflected work done: the only record of their existence on the projects showed on the time sheets of the payroll checkers. The rest of them were scattered all over the city and, except in the rare instances where conscientious individual foremen or engineers were able single handed to keep a score or more busy, their work was of no permanent value to the city.

When I was offered the appointment of Commissioner of Parks by Mayor LaGuardia after the election in November of 1933, I undertook immediately, with the approval of the Mayor, a comprehensive survey of the park conditions of the City. The late Travis Whitney, Civil Works Administrator for the City, appointed a Consulting Engineer and three assistant engineers for professional services, and not on a relief basis, to aid me in this survey. These engineers started work on November 14th of last year and by January 19th, the date of my appointment to office as Commissioner of the consolidated Department of Parks, had completed a survey of every park and parkway area in the City. One thousand seven hundred Work Relief projects were set up in this report, to provide worthwhile work for 75,000 men. The cost of necessary materials, the equipment required, and the labor which could be effectively used on each project, was outlined with a map and photographs of the park area.

I undertook immediately to reorganize the new Department. I established at the Arsenal Headquarters in Manhattan a single Division of Design, and placed at its head experienced park engineers and landscape architects, drawn from the State park service, and placed the responsibility for the direction of the actual construction work in the hands of executives of proven ability. There were only five new full-time technical employees and two part-time consultants brought into the permanent City Service, and there was no time to train the hundreds of foremen, superin-

tendents, engineers, landscape architects, architects who had to start real work immediately. Experienced men had to be employed at once, and they could not be found registered with the National Reemployment Service. Attempts to secure men from this agency to plan and direct this huge construction program failed.

On Friday, January 26th, a conference was held between the Federal, State and City C. W. A. authorities and the Park Department officials, and permission was granted to the Department of Parks of the City to employ directly five hundred technical and construction supervisors at salaries up to \$80.00 per week. The quota of five hundred men was later increased to five hundred and forty-seven. The Park Department was given a free hand in the selection of these men. No consideration was given to residence or need of work. They were to be hired on the basis of their ability and experience.

Pursuant to this agreement the Park Department officials canvassed the larger building and general contracting firms of the City for lists of superintendents, foremen, expeditors of construction and engineers who were available, and secured from the Associated General Contractors lists of member contractors. All these lists contained names of experienced supervisors who were recommended by their former employers. One thousand three hundred telegrams were sent out on Saturday afternoon to all men interested in securing

positions, directing them to report for personal interviews on Sunday afternoon. On Sunday afternoon all the applicants for the foremen positions were interviewed by Consulting Engineers of the Department, and graded according to their experience and qualifications. The applicants for superintendent positions were interviewed by engineers of the Department and those whose record indicated capacity for the most responsible positions, were interviewed personally by the General Superintendent. Colonel Walter DeLamater, City C. W. A. Administrator was asked to be present, and reviewed and approved this emergency procedure. The first men reported for interviews at 2:00 P. M. on Sunday, and the task was completed at 5:00 A. M. Monday morning. The superintendents who were selected were directed that night by telegram to report to work on Monday, and the foremen who were employed were directed by telegram to report for work over a period of the following three days. A memorandum on this procedure forwarded to the Chairman of the Civil Works Administration of the State of New York on February 9th is attached.

These men employed on January 27th were almost all outside construction supervisors, and we continued our efforts to obtain designing architects, landscape architects and engineers from the National Reemployment Service. By the middle of February it became clear that not even white collar engineers of sufficient experience and training could be drawn from this agency. On February 21st, the Director of the Federal Civil Works Administration of New

York State authorized Colonel DeLamater, New York City Civil Works Administrator, to select supervisory, designing and professional personnel to the extent of 453 persons from lists submitted by the National Engineers Society Employment Service, the National Engineers Society direct, the Architectural League, the General Contractors Association or the Association of Landscape Architects. The Director commented in his letter granting this authority that an emergency existed, making it impossible to draw these men through the National Reemployment Service. A copy of the letter from the Civil Works Administrator is attached.

There was no limitation put on the residence of these 453 men. They were to be hired for their ability and experience. Due to a later change of regulations, 142 of the 453 men were required to qualify through Home Relief.

Of the original 547 men who were employed on January 27th, 374 are still employed on Park Department projects; of the 453 men who were obtained through the Engineers Society rolls, 369 are still working on park design. The 257 men of the original 1,000 employed have dropped out by accepting other jobs, have been discharged for inefficiency or transferred to other City Departments, including the general administrative office of the Works Division. I did not know any of these men. Not a single one was employed or recommended on account of personal or political influence. They were employed on Federal C. W. A. projects, and paid

entirely from Federal funds. Their place of residence was not considered. They were employed solely for their abilities to design worthwhile park projects, supervise all types of construction work and perform other highly specialized professional practices incidental to the development of the park system in New York City.

The Park Department Projects which these men undertook to organize and progress is the largest engineering or construction project undertaken as a single enterprise during the same length of time anywhere in my knowledge. The men took over a completely demoralized force of untrained laborers and mechanics, and in a short length of time whipped an efficient organization into shape. There have been no irregularities and no instance of dishonesty by a single one of these men. They have worked almost double the number of hours required of them by their paymasters, because the industry in which they were trained always demanded this of them. They have weeded out and discharged Relief Workers who could not or would not work. They have demonstrated remarkable ingenuity in stretching inadequate quantities of materials. I know of no more able, devoted and patriotic group of men anywhere in public service.

The C. W. A. as a 100% Federal Agency went out of existence on forty-eight hours notice last Spring, and the T. E. R. A. proceeding on the basis of 50% Federal funds, 25% State funds and 25% local funds, was substituted.

The rules of employment, the method of purchasing material, the regulations governing the rental of equipment, and the responsibility for the progress of the work were all changed overnight, but the actual work of building playgrounds, erecting buildings, paving roads, etc., did not change. The papers and the bookkeeping were simply taken off one desk, and dumped on another.

As soon as the Federal Civil Works Administration was replaced by the Works Division of the Department of Public Welfare, as a clearing house for this work, the comparatively small number of technical and supervisory men who lived outside of New York City were questioned as to their residence. In July, a list of forty-one names of men who were listed as non-residents of the City of New York was furnished this Department by the Department of Public Welfare. On July 27th, the Department of Public Welfare was advised that four of the men listed were no longer working with the Department, and that twenty-seven of the men whose residence was questioned, were key men and that no men could be found available within the City who could replace any of them. Ten of the men whose residence was questioned were technical specialists and the Welfare Department was advised that, while they were fully qualified for the work they were doing and the termination of their services would result in loss, their positions could be filled with other men of similar qualifications. The Park Department offered to

substitute additional men furnished by the Welfare Department to replace those ten men. Up to the present time two replacements have been received. A copy of the memorandum from the Park Department to the Welfare Department is attached.

It should be made clear that in addition to the 601 superintendents, architects, engineers and landscape architects employed by the Park Department with no consideration of their need for relief, there are 1,683 other technical and supervisory employees who were furnished by the Home Relief Bureau of the Department of Public Welfare. Statements have been made that these men are overpaid. Of the 2,284 men planning and directing the construction, five receive \$80.00 per week; nine receive \$70.00 per week; thirty-four receive \$60.00 per week; one receives \$55.00 per week; fifty-six receive \$50.00 per week; sixty receive \$45.00 per week; five hundred and thirteen receive weekly wages between \$33.00 and \$40.00; eight hundred and twelve receive \$30.00 per week; sixty earn between \$24.00 and \$27.00 per week; and seven hundred thirty-four of them are paid \$21.00 per week. Of these 2,284 men, 669 of them are architects, engineers, specification writers, topographical draftsmen and topographical engineers; 1,615 of them are in charge of the actual direction of all the construction forces. They are general superintendents, assistant superintendents, foremen of mechanical trades, labor foremen and other super-

visors. There are 37,643 men working now on Work Relief Projects in the Park Department.

Criticisms have been directed at the method of purchase of material, rental of equipment and the hire of transportation facilities. In projects totaling over thirty million dollars over a period of less than nine months, mistakes are made. I do not pretend that mistakes have not been made in the Park Department. It is nothing short of miraculous that more mistakes have not been made. The rules and regulations under which the money has been spent were not designed to cover emergency work. The purchase of millions of dollars worth of material running into thousands of items, requiring immediate delivery, has been done through a central purchase system designed to satisfy the routine needs of organized, smooth-running City institutions, and not emergency construction projects. The regulations have been changed overnight many times, and in almost every instance, money for the purchase of material and equipment has been made available after the date men were sent to work on the projects. Federal supervision by the C. W. A., State and Federal supervision by the T. E. R. A., City supervision by the Department of Public Welfare, through both its Home Relief and Work Relief Divisions, the inspection of material and the payment of bills by the Finance Department, buying of material and equipment by the Purchase Department, investigation of the conduct of work by the Commissioner of Accounts, and other forms of control, approval, or check by

other City Departments, commissions and bureaus passing on quality of materials, permits for construction, etc, created a tangle of red tape which has been cut only by the most aggressive and persistent pressure. The results justify my belief that no Government enterprise of similar complexity has been performed so as to provide as little justification for honest criticism.

Since January 19th of this year the Department of Parks has spent \$30,231,552.00 on new construction from Work Relief funds, of which \$25,931,552.00 has been used for labor and \$6,300,000.00 for materials and equipment. The money has been spent prudently in accordance with a comprehensive plan of development of the whole city. All the parks have been rehabilitated. Forty-one thousand, seven hundred and fifty gallons of paint have been used; eighty-six miles of rusty, dilapidated fence have been replaced with twenty-one miles of new fencing; forty-three miles of walks have been repaired; and twelve miles of bridle paths have been renovated, and six miles of new bridle paths constructed; 236 acres of park area have been drained and restored to park usage; 712 drinking fountains have been repaired and 243 new fountains installed; 39,000 cubic yards of stone masonry retaining walls have been built to restore steep hillsides to public usage; 145 comfort stations have been cleaned, repainted and repaired; 10,000 new waste baskets have been installed and 23,100 benches have been

repaired. Three hundred and twenty-two tennis courts have been resurfaced; 90,500 trees have been pruned; 13,500 dead trees have been removed; 141,800 trees have been sprayed; 192,800 shrubs have been pruned and the trees and shrubs in forty-three parks and parkways have been completely rehabilitated. Over 70,000 cubic yards of muck have been mined and spread as top dressing on lawn areas. This material which was being covered with ash fill would have cost the City over \$200,000.00, if it had been purchased and not salvaged from swamp land. One hundred thirty-three thousand cubic yards of new soil were purchased; 97,000 pounds of grass seed have been used; 400,000 square feet of sod were placed; 14,200 trees, 105,000 shrubs and 43,000 vines were planted. A complete program of rehabilitating over 284 statues in the City has been undertaken.

Those items are only a small part of the general housecleaning and rehabilitation of the existing areas. New construction projects include seven golf courses, which will be completed by the Spring of 1935, and five existing golf courses which have been modernized. One new golf club house will be finished. Thirty-four new playgrounds, equipped with comfort stations, play pavilions, wading pools, and outdoor playground apparatus have been added to the system in addition to the rehabilitation of sixty-five existing playground areas. All these playgrounds have been landscaped to provide shade. The seven block

recreational park at Chrystie-Forsythe and two blocks of the recreational park at Leiv Eiriksson have been finished and opened this year. By next Spring, sixty new playgrounds will have been opened. Bryant Park has been completely rebuilt. Complete new zoos will be finished in Central Park, Manhattan, Prospect Park in Brooklyn and Barrott Park in Staten Island. The sheepfold in Central Park has been converted into a modern tavern and Claremont Inn on Riverside Drive has been renovated and opened as a popular priced restaurant. The lower reservoir in Central Park is being rebuilt and opened to the public; temporary bath houses have been installed at Wolfe's Pond in Staten Island. Eight new swimming pools, completely equipped with bath houses, filter plants and chlorinating units, are under construction. Fourteen additional pools are being designed, and work on them will commence in the Spring.

If this constructive program is to go on, the supervision by aggressive, qualified construction superintendents, engineers, architects and landscape architects, selected for their ability to get work done and not primarily for their need of relief, must be continued and a reasonable amount of material, equipment, and supplies must be furnished. Without this material to work with, and without this small group of men of proven ability, the whole Relief program will revert in a short time to the old racket of raking leaves and polishing sidewalks.

Robert Rosen

Commissioner.

(COPY)

DEPARTMENT OF PARKS

February 9th, 1934.

Mr. Alfred H. Schoellkopf,
Chairman, Civil Works Administration
for the State of New York,
124 East 28th Street,
New York City.

Dear Al:

I am attaching a memorandum prepared by Mr. Andrews and Mr. Praeger outlining the procedure followed in the employment of technical and construction supervisors for C.W.A. projects of the New York City Department of Parks.

The procedure followed in securing these men was in accordance with my direct instruction, and I was familiar with every step that was taken.

Very truly yours,

(SIGNED) Robert Moses

Commissioner of Parks.

(COPY)

DEPARTMENT OF PARKS

MEMORANDUM OUTLINING PROCEDURE FOLLOWED IN THE
EMPLOYMENT OF TECHNICAL AND CONSTRUCTION SUPER-
VISORS FOR C.W.A. PROJECTS OF THE NEW YORK CITY
DEPARTMENT OF PARKS.

On Friday evening, January 26th, a conference was held at the state C.W.A. headquarters on C.W.A. work in the New York City parks. Henry Root Stern presided and was in communication on the telephone with Alfred H. Schoellkopf, Chairman of the State C.W.A. Others present were Frederick Daniels of the State C.W.A.; Henry Epstein, Counsel; Colonel DeLamater and Mr. Woolsey of the City C.W.A.; Mr. Lange of the U.S. Unemployment Service and Mr. Kauffmann of the State Employment Service; Colonel Hammond, Mr. Williams, Mr. Ford and Mr. Jones of the State C.W.A. staff; Robert Moses, Commissioner of Parks of the City of New York; W. Earle Andrews and Emil Praeger of the City Park Department, and others. It was definitely agreed at this conference that the Department of Parks of the City should directly employ 500 technical and construction supervisors at salaries up to \$80.00 per week and that, because of the emergency, these men would be exempt from the usual rules of the Federal Re-employment Service.

Pursuant to this agreement, on Saturday, January 27th, General Superintendent Emil Praeger and Consulting Park Engineer W. Earle Andrews, canvassed the larger building and general construction firms of the city for lists of superintendents, foremen, expeditors, and construction engineers who were available. They also secured from the Associated General Contractors, a national trade organization, lists of its member contractors. All of these lists contained names of experienced supervisors who were recommended by their former employers. Mr. Andrews and Mr. Praeger were assisted in this work by Messrs. Wood, Quigley and Dawson, C.W.A. engineers working under the supervision of Mr. Praeger on a per diem basis; John Madigan, Richard Hyland and former Deputy Commissioner of Highways of the State of New York, Major I. B. A. Huie, of the consulting engineering firm of Madigan and Hyland, who, at our request, offered their services without pay; and several civil service employees of the engineering staff of the Department of Parks. Mr. Praeger sent out 1300 telegrams on Saturday afternoon for all men interested in securing positions as superintendents or foremen to report for personal interviews on Sunday afternoon.

On Sunday afternoon, all of the applicants for foremen's positions were interviewed by Mr. Hyland and Major Huie and graded in accordance with their experience and qualifications. All of the applicants for superintendents' positions were first interviewed by Messrs. Quigley, Wood and Dawson and the civil service engineers and those who demonstrated ability which seemed to fit them for the more responsible positions were interviewed personally by Mr. Praeger. Mr. Madigan, Mr. Andrews and Major Crane (Assistant to the Commissioner) supervised generally the process of passing these men through for interviews. Colonel DeLamater, the City C.W.A. Administrator, spent at least an hour in the office upon the invitation of Mr. Andrews on an inspection of the procedure.

When the work of interviewing all the men was completed at about eight o'clock in the evening, a board consisting of Mr. Praeger, Mr. Madigan, Major Huie and Mr. Andrews as chairman, personally passed

upon the selection of the supervisors who were to be employed and telegrams were sent out to the superintendents directing them to report to work on Monday. The foremen who were employed were directed by telegram to report over a period of the following three days.

The first men reported for interview at 2:00 P. M. on Sunday and the task of selecting the men was completed at 5:00 A.M. Monday morning. At no time during the course of the work did a single contractor appear in the building or did an officer or executive of the General Contractors' Association come into the picture. The negotiations were at all times between the Department of Parks and the individual seeking employment.

(SIGNED) W. Earle Andrews
Consulting Park Engineer

(SIGNED) Emil Praeger
General Superintendent

(COPY)

FEDERAL CIVIL WORKS ADMINISTRATION
OF NEW YORK STATE

NEW YORK OFFICE

79 Madison Ave.

February 21st,
1934.

Colonel Walter A. DeLamater,
New York City Civil Works Administration,
111 Eighth Avenue, New York City.

Attention of Mr. Woolsey

My dear Colonel DeLamater:

Pursuant to our conversation of this date, you are hereby authorized to select supervisory, designing and professional personnel to the extent of 453 persons from lists submitted by the National Engineering Society's Employment Service, the National Engineering Society direct, the Architectural League, the General Contractor's Association, or the Association of Landscape Architects.

These societies will furnish you with a certified list of qualified unemployed persons who are in need, and a copy of these lists will be also furnished by these organizations to this Administration.

This authorization is granted as an emergency measure, in view of the fact that the urgency of continuing and promoting your projects brings about an exigency which makes it impossible to draw these men through the National Re-employment Service.

Very truly yours,

(SIGNED) Frederick I. Daniels.

FID:M

COPY OF MEMORANDUM ON TECHNICAL AND
SUPERVISORY WORK RELIEF EMPLOYEES OF
DEPARTMENT OF PARKS WITH NAMES OF IN-
DIVIDUALS OMITTED

July 27, 1934

TO: Walter B. Woolsey
Assistant Director Works Division
Department of Public Welfare

FROM: W. Earle Andrews

I have received a list of forty-one names of men who are non-residents of the City and whom you intend to dismiss because of their non-residence.

Four of these men no longer are working for the Department of Parks because they have resigned or have already been dismissed for one cause or another. These men are as follows:

(NAMES, ADDRESSES, BADGE NUMBERS
AND TITLES OF FOUR MEN LISTED.)

The following men hold key positions as executives or do specialized work. There are no men available within the City who can replace any of these men, and if there were men available with equal experience and qualifications, it would be entirely impractical to replace any of these men with new men whom it would take two or three months to become fully acquainted with the work which these men are doing and to acquire the experience and value which these men have acquired during their work with this Department. These key men are as follows:

(NAMES, BADGE NUMBERS, TITLES,
WEEKLY WAGES AND COMPLETE DESCRIPTION OF DUTIES OF TWENTY-SEVEN MEN LISTED.)

July 27, 1934.

Memorandum to - Walter B. Woolsey
from - W. Earle Andrews

The following men altho they are not major executives and do not hold key positions, are fully qualified for the work they are doing, and the termination of their services would result in great loss in either design or construction. Their positions could be filled by other men with similar qualifications, but as far as we have been able to ascertain, such men are not available on the Welfare list in the city. If you can furnish us with qualified men from the Welfare list, we can substitute them for these men at a slight cost in delay and confusion:

(NAMES, BADGE NUMBERS, ADDRESSES,
TITLES, AND WEEKLY WAGES OF TEN
MEN LISTED.)

(Signed)
W. Earle Andrews
General Superintendent

WEA:HL
WHL

142 142
DEPARTMENT OF PARKS
Arsenal, Central Park
Tel. Regent 4-1000

FOR RELEASE SUNDAY
October 28, 1934.

The Department of Parks is making a complete survey of the existing trees on the streets in all the five boroughs of New York. There are over a million street trees in the City and the Charter provides that the Park Department is responsible for their care. Each of the former Borough Park Departments had its own idea as to how this control should be exercised. Some boroughs allowed individuals to plant trees with a permit calling for Park Department inspection, some planted trees for individuals for a nominal fee, some accepted cash guarantees that the planting would be properly done. No adequate records were kept and the existence of most of the street trees has never been tabulated. No orderly city wide system of inspection was maintained. Trees were pruned and fallen trees removed only when occupants of adjacent property complained. The employees responsible for the care of the trees were called in some instances "Inspectors of Tree Complaints".

This lack of uniform policy has unfortunately resulted in selection of proper species, amateur and improper planting, placing of trees in locations that cannot support any tree at all, and a staggering maintenance burden.

While the survey is not entirely completed, the information already compiled indicates that uniform regulations must be established as soon as possible. The Park Department announces the following policy:

1. The Department of Parks will plant without cost to property owners trees along boulevards and parkways under its jurisdiction.

(Continued)

The necessary planting on these boulevards and parkways has been neglected and cannot be completed immediately. Designs for the planting are being prepared and a program over a period of several years will be established. The program is necessarily dependent on the availability of funds. If the present work relief is continued some of the work will be undertaken immediately.

2. Permits for planting by individuals or organizations on city streets will be issued by the Park Department except where conditions of soil, usage, and other factors indicate trees cannot be expected to survive. Permits must be secured from the Department before work is started, and the selections of the species, size and location of the tree will be specified. Preparation of the soil as well as planting must be done according to specifications of the Park Department.

The cost of the work, except supervision, must be borne entirely by the individual or organization requesting the permit. A ten dollar deposit must be paid for each tree as a guarantee of the proper performance of the specifications. This deposit will be returned when the tree is accepted by the City for maintenance. Application blanks for the planting of trees are now available and may be obtained either by applying by mail or in person to the Department of Parks at the following offices:

MANHATTAN: Swiss Cottage, 79th Street and West Drive, Central Park.

(Continued)

BRONX: Zbrowski Mansion, Claremont Park.
BROOKLYN: Litchfield Mansion, Prospect Park
West and 5th Street, Prospect Park.
QUEENS: The Overlook, Union Turnpike and
Park Lane, Forest Park, Kew Gardens,
L. I.
RICHMOND: Clove Lakes Park, West Brighton, S.I.

Trees planted by the Park Department on Park Department land and by individuals on permit from the Park Department will be maintained by the city. A systematic program of pruning, tree surgery where necessary, and the removal of dangerous or dead trees will be undertaken this Winter in each of the five boroughs of the city, if work relief funds are available.

There has never been a complete, comprehensive overhauling of all trees on city streets. Funds have never been available in sufficient amounts to do this work and there has never been a sufficient organization to supervise the highly technical forestry force.

Over two thousand complaints are received each month at the five borough offices and at the headquarters of the Park Department concerning trees that need attention. Every effort is made to investigate these complaints and correct faulty conditions where they exist, but preventive measures are required and not corrective actions. The overhauling will take two Winters. Once this is completed and an orderly system for the control of future planting is established, all the trees in the city that can be properly planted will be maintained at the present cost of sawing off dead branches, cutting down fallen trees, pruning and spraying that is now being done.

-End-

DEPARTMENT OF PARKS
Arsenal, Central Park
Tel. Regent 4-1000.

FOR IMMEDIATE
RELEASE

October 25, 1934.

The Department of Parks will open three more playgrounds on Sunday, October 28th, at 3:30 p.m. These playgrounds are located at Sheriff, Broome and Delancey Streets on the lower east side in Manhattan, at Fulton Street and Classon Avenue in Brooklyn, and at Fort No. 4, Sedgwick and Reservoir Avenues, in the Bronx.

The exercises will open with selections by a band, which are to be followed by a brief address by the Borough Director of the Department of Parks who will serve as chairman; call to the colors; rendition of the Star Spangled Banner; games and dances by the children of the various playgrounds, and the actual opening of the play areas.

All three playgrounds have recreation buildings and are fully equipped with play apparatus for children, and have space for basketball and handball courts. Each of the new playgrounds in Manhattan and Brooklyn will have a wading pool and at Fort No. 4 a large portable shower will be provided for use during the summer season in the open play space.

The playground at Sheriff, Broome and Delancey Streets is known as the Gulick Playground. It was so named in memory of Dr. Luther Halsey Gulick, one of the founders and the first President of the National Recreation Association. Dr. Gulick was also one of the founders of the Public School Athletic League and was instrumental in revising instruction in hygiene and physical culture in the Public Schools of the City of New York. He served as President of the Campfire Girls Association, which he also helped to organize.

-end-.

DEPARTMENT OF PARKS,
Arsenal, Central Park.
Tel. Regent 4-1000

FOR IMMEDIATE RELEASE
October 23, 1934.

144

Through the generosity of the National Association of Audubon Societies the Department of Parks is to receive nearly 100 separate feeding and nesting devices for use in Central Park. These special means for attracting bird life range in size from small suet holders to large "weathervane" grain feeders. The nesting boxes will be designed to accommodate beneficial species of wild birds now resident in the park, and also other birds that formerly nested there and may return as residents as a result of these efforts.

This equipment will be placed in the three sanctuary areas maintained in Central Park by the Park Department. It is appropriate that the Audubon Association make this donation, inasmuch as it was the original interest aroused by this organization that laid the ground work for the present sanctuary developments. Food-bearing plants are being set out by the department, and the addition of nesting boxes and feeding trays will still further enhance the value of the park sanctuaries to the birds, and, thereby, to the public in general.

-End-

Octo. 17, 1934.

Memo: To Mr. John Downing,
Supervisor of Recreation Brooklyn

We have been advised by the Music Division
111 8th Avenue, that there will be a Dance Orchestra
assigned on Tuesdays and Thursdays, 8:30 P.M. at the
Picnic House, Prospect Park, commencing Tuesday, the
23rd of October.

This dancing is to continue throughout the
Fall and Winter season.

James V. Mulholland
Director of Recreation.

Per May Peters.

Copy to Mr. Gross - Boro Engineer

Copy to Mr. Nelson

DEPARTMENT OF PARKS
Arsenal, Central Park

October 8, 1934.

Mr. Andrews directed that the following statement should be telephoned to all of the Queens dailies as well as to the new York papers carrying a Queens section:

THE DEPARTMENT OF PARKS ANNOUNCES THAT AFTER FURTHER CONSIDERATION IT HAS BEEN DECIDED NOT TO CONSTRUCT A SWIMMING POOL IN ST. ALBANS MEMORIAL PARK. A NEW LOCATION FOR THIS SWIMMING POOL IS NOW RECEIVING THE ATTENTION OF THE DEPARTMENT.

THIS WAS DONE.

L. RAY NELSON

DEPARTMENT OF PARKS
Arsenal, Central Park
Regent 4-1000.

FOR RELEASE
Thursday, October 11,
1934.

Creatore and his band will play the final outdoor concert of the season at Forest Park, Queens, on Saturday (October 13) evening at 8:30 P.M., in the Music Grove at Woodhaven Boulevard and Main Drive, Richmond Hill.

The program has been chosen by popular request, and among the selections are many favorite numbers by Victor Herbert.

The Department of Parks estimates that 75,000 people have attended the concerts given under its auspices during the summer.

-end-

THIS WAS RELEASED TO THE QUEENS PAPERS * 10/10/34

DEPARTMENT OF PARKS
Arsenal, Central Park
Tel. Regent 4-1000.

FOR IMMEDIATE RELEASE
OCTOBER 8, 1934.

The Department of Parks announces that the opening date of the Flushing Memorial Playground, located at 149th Street and 25th Avenue, Queens, has been advanced from October 20th to November 9th.

-end-

DEPARTMENT OF PARKS
Arsenal, Central Park
Tel. Regent 4-1000

FOR IMMEDIATE RELEASE
October 19, 1934.

On Saturday, October 20th, at 4 p.m., the Department of Parks will hold a brief ceremony in connection with the unveiling of the bronze statue of Dr. J. Marion Sims by Ferdinand Von Miller at its new location in Central Park, facing Fifth Avenue at 103rd Street.

Dr. Bernard Sachs will pay tribute to Dr. Sims for the Academy of Medecine, Dr. John H. Finley for the citizens of New York and Dr. George Gray Ward for the Woman's Hospital.

This statue of Dr. Sims formerly stood in Bryant Park and was removed by former administrations and placed in storage.

-End-

DEPARTMENT OF PARKS
ARSENAL, CENTRAL PARK
Regent 4-1000.

134 134
FOR IMMEDIATE RELEASE
OCTOBER 18, 1934.

The Park Department announces the opening of two playgrounds on Friday, October 19th. One of these playgrounds is in the Borough of Brooklyn at Park Avenue and Taaffe Place and includes a general girls' play field, a boys' play field, a wading pool, basketball court, and an area for outdoor playground apparatus. Handball courts are also provided for boys. A brick recreation building with toilet facilities and indoor playrooms is being constructed.

The playground in Manhattan is located at Cherry, Monroe and Gouverneur Streets. A general play field, two handball courts, outdoor gymnasium equipment and a wading pool have been completed. A recreation building with comfort station is also being provided. The opening of these two playgrounds mark thirty-two opened by the Park Department in a period of less than three months.

On Friday, October 26th the playgrounds at Sheriff, Broome and Delancey Streets, Manhattan, Fulton Street and Classon Avenue, Brooklyn, and old Fort No. 4 in the Bronx will be opened to the public.

On November 9th the Dreier Offerman Playground, at Bay 46th Street and Cropsey Avenue in Brooklyn and the Flushing Memorial Playground at 149th Street and Bayside Avenue in Queens will be completed and opened to the public.

-end-

The Recreation Division of the Department of Parks has arranged a harvest festival which is to be presented on the Mall in Central Park, Monday evening (October 15th) at 8 P.M. The nearest entrance to the Mall is 72nd Street and Fifth Avenue. This is the first time that the Department of Parks has planned a large outdoor festival of this character.

A typical harvest scene will be depicted, with all of the bounty associated with the harvest season on display. Autumn leaves and cornstalks will form a setting for the folk dances of many lands which are to be given by the playground directors and Folk Council Dancers. A chorus of forty trained singers, representing the gleaners, will be furnished by the Music Division of the Department of Public Welfare. They will sing the harvest songs of various nations. Dance and incidental music will be played by a thirty-five piece orchestra, directed by Gerardo Iasilli.

The following organizations are cooperating with the Department of Parks in giving the festival:

The English Folk Dance Society
The Folk Festival Council Groups
Ukrainian Dancers Club
Bondeungdomslaget
Svenska Folkdans Ringen
Music Division, Department of Public Welfare
National Recreation Association

The program of the evening is as follows:

Overture

Prologue

Proserpine and the Earth Spirits
Sun and Rain

(Continued)

Page 2.

- Scene I Processional - "Come You Thankful People Come"-
Chorus
The Goddess of Harvest and the Gleaners
- Scene II Indian Episode - The Indian Harvest - Chorus
"Wake, Wake, Arise"
- Scene III The Holland Episode - "When It's Raining" - Chorus
Dutch Dance
- Scene IV English Episode - "Lavenders Blue" - Chorus
The Morris Dancers -----Director: Miss May Gadd
Processional Morris Dance
Tideswell Derbyshire
Blue-eyed Stranger Oxfordshire
Country Dances
Korpeth Rant Northumberland
The Old Mole 17th Century
Sword Dance
Winlaton Durham
Country Dance
The Durham Reel Durham
- Scene V Ukainian Episode - "The Harvest Song" - Chorus
Ukrainian Dancers -----Director: Mr. Michael
Kolomeyka Herman
Honyveeter
Hrechanyky
Kolomeyka Forward
- Scene VI Italian Episode - "Song of the Reapers" - Chorus
Tarantella
- Scene VII Spanish Episode - "The Bull and the Cowboy"-Chorus
Spanish Dancers
- Scene VIII Norwegian Episode - "Fetch the Water" - Chorus
Norwegian Dancers -----Director: Aasmund Goytil
S. Tur One
Haugebonden
Figaro
Rhinelanders
- Scene IX Swedish Episode - "Reap the Flax" - Chorus
Swedish Dancers-----Director Mr. J. Nelson
Dal Dance
Vastoga
Skralat
Oxen Dance
- Scene X New England Episode - "Corn Shucking Song" -Chorus
Country Dancers - Virginia Reel - Southern Group
- FINALE Recessional - "Thanksgiving Hymn" with Descant

In the event of rain the festival will be held at
the Recreation Building in Macombs Dam Park, 165th Street and
Jerome Avenue, the Bronx.

-End-

The Department of Parks has completed a survey of all the signs and commercial advertising devices adjacent to parks and parkways in the City of New York and has met with the Metropolitan Advertising Association as a first step to eliminate as many as possible. A committee of three representing the Association is working on the survey with engineers and zoning experts of the Park Department.

The Park Department survey describes 15,000 signs adjacent to City parks and parkways. Fifteen technical employees trained for the work compiled the report in three months. The tabulation is in twelve typewritten volumes of over 3,000 pages. Maps have been drawn showing the location of each sign and photographs and sketches show the detailed description of each advertising device.

The part of the report submitted to the members of the Metropolitan Advertising Association covers only signs maintained by commercial advertising companies in the five boroughs of the City and describes 1,200 signs owned by 46 different companies. Of these 1,200, the Park Department considers that 601 are a real detriment to the appearance of the park areas and should be removed. The purpose of the Committee is to work with the Department in formulating a plan and schedule to get rid of these particular 601 signs requested to be removed.

There are over 14,000 other signs erected by almost as many individuals. They range from huge elaborate illuminated devices to hand-bills plastered on fences. They advertise liver pills and cod-liver oil, pasteurized milk and

(Continued)

beer gardens, saddle horses and automobile tires, beauty parlors and tomb-stones and barbers for both men and dogs. They call attention to everything from a package of chewing gum to an estate in the country.

Thousands of the signs have been erected and evidently forgotten. Painted lettering on buildings is half obliterated by the weather, tin plates supported by rotten wood frames are falling apart from neglect and many cheap devices are never repaired when partially ripped away in a storm.

The Park Department is not attempting to rid the City of outdoor advertising signs. It is undertaking to clean up as far as possible the unsightly nuisances next to parks. Thousands of men have been working to clean up the long neglected areas within the park boundaries and the residential areas next to parks and parkways should be as attractive as possible to permit the fullest enjoyment of the recreational area. Advertising signs do not belong in residential districts. They exist there because of past indifference and neglect. These former mistakes cannot be corrected overnight, but an orderly program has been worked out and it will be followed. No single enthusiastic drive can be effective; the problem calls for sustained effort and cooperation on the part of the responsible sign board companies. This cooperation we are assured of.

The Park Department is cleaning its own house first. Many of the directional and information signs in the park system have been either unnecessary or improperly designed. A standard of design has been adopted for park and parkway signs reducing the number and sizes to the minimum required for safety and necessary public information.

-End-

DEPARTMENT OF PARKS
Arsenal, Central Park
Tel. Regent 4-1000

FOR IMMEDIATE RELEASE
October 8, 1934

131

131

The Department of Parks will hold a handicraft exhibit of articles made by children who attended the park playgrounds, on Tuesday (October 9, 1934) from 10 A.M. to 9 P.M. at McComb's Recreation Building, McComb's Dam Park, Bronx, New York.

The exhibition includes samples of soap carvings, basket making, wood carvings, as well as paintings, drawings, and sewing, and also a model of a small airport. The articles comprising this exhibit also will be on display at the Hotel Commodore during the Recreation Conference, October 16 and 17th.

-End-

DEPARTMENT OF PARKS
Arenal, Central Park
Tel. Regent 4-1000

130
FOR IMMEDIATE RELEASE
October 5, 1934

130
The Department of Parks announces that the Harvest Festival at Thomas Jefferson Park, located between East 114th Street and Pleasant Avenue, New York City, which was postponed owing to inclement weather, will be held on Saturday, Oct. 6th at 1:30 p.m.

This is one of the areas which was planted by children under the direction and supervision of the School Farm, which is one of the activities of the Division of Recreation of the Department of Parks.

A brief program by the children of the playground consisting of a salute to the flag, recitations, dances, a little sketch and musical selections will precede the harvesting of the crops, which include beets, carrots, celery, lettuce and other vegetables.

-End-

The Department of Parks announces the opening of three new playgrounds for children at noon on Columbus Day, Friday, October 12th. These additions to the City Park system mark thirty modern, completely equipped recreational plants opened to the public by the Department of Parks during a period of less than three months.

The playground in Columbus Park at Baxter, Mulberry, Bayard and Park Streets, on the lower East Side, in the Borough of Manhattan will be dedicated by Mayor LaGuardia. This old park with its fine big trees formerly included a small play area, which was in reality only a broken surfaced area containing poorly arranged rusted swings and slides. It has been replanned to double the size of the play area and provide an orderly arranged resting place for adults at the north end. The playground section which occupies two-thirds of the park area includes a large wading pool, outdoor apparatus, and a large game field. A recreational building will also be provided in the future.

The dedication of this park will be marked by the unveiling of a statue of Christopher Columbus in the section of the park back of the New York County Courthouse. This statue of white marble was carved by Miss Emma Stebbins in Rome in 1867 and was presented to the City of New York in 1869. The circumstances surrounding the unearthing of the statue are interesting.

Mr. John Barnell of Syracuse called attention to the existence of this statue in a letter to the Department of Parks on March 3rd of this year. He asked for a photograph of the statue in its existing location. The statue could not be found in any City park. A search uncovered this exceptional piece of sculpture in a crate in the 79th Street storage yards. A fluted circular pedestal of white limestone has been designed and erected by the Park Department.

Leading Italian societies will participate in the exercises as a part of their annual Columbus Day observances. A pageant including organized games and dances by the children of the neighborhood playgrounds will form a part of the opening ceremonies.

Two additional play areas will be added to the Leiv Eirikson Park in the Borough of Brooklyn, between 66th and 67th Streets and 4th and 6th Avenues. These playgrounds double the existing area in this park available for play.

A new playground for small children will be opened at Corona Avenue and 102nd Street in the Borough of Queens. The area includes a recreational building and outdoor play apparatus. A unique feature of this playground is its oval, concrete surfaced roller skating rink around the play field.

At the conclusion of their ceremonies at Columbus Park, Mayor LaGuardia and Park Commissioner Moses will make an inspection tour of these two playgrounds in Brooklyn and Queens.

DEPARTMENT OF PARKS
ARSENAL, CENTRAL PARK
REGENT 4-1000

Re 12/12 F

FOR IMMEDIATE RELEASE
October 4, 1934.

The Department of Parks announced today that the position of Assistant to the Commissioner, formerly held by Major Theodore Crane, is to be filled by the promotion of George E. Spargo of the Department's Engineering Staff. This exempt position in the Park Department is being filled by promoting Mr. Spargo from his position in the competitive class of the Municipal Civil Service.

The reorganization of the five former borough Park Departments into the consolidated Department of Parks on January 19th of this year eliminated 22 exempt positions, replacing these positions with one commissioner and only five exempt staff members. With the appointment of Mr. Spargo all five of these jobs are now filled by employees drawn directly from the competitive classifications of either the New York State or City Civil Service.

-end-

DEPARTMENT OF PARKS
Arsenal, Central Park
Tel. Regent 4-1000

#127
FOR RELEASE
Friday, October 5, 1934

The Department of Parks announced that the playground at Houston and Essex Streets on the lower east side of Manhattan will be opened today. This playground is similar in design to the War Memorials and model playgrounds that have previously been opened. It includes a field house and outdoor playground equipment.

-End-

DEPARTMENT OF PARKS
Arsenal, Central Park
Tel. Regent 4-1000

Release # 126
FOR IMMEDIATE RELEASE
October 4, 1934

Contractor for the section of the West Side Express Highway through Riverside Park, between 72nd Street and 79th Street has started driving piles for the foundations of the retaining walls to support the paved roadway over the tracks of the New York Central Railroad. Concrete has already been poured for part of the foundations, in the section not requiring pile foundations. Two steam shovels are working at grading portions between the railroad tracks and the river.

The work now under contract provides for the completion of the walls on each side of the railroad tracks. The specifications require its completion within two months. The contractor is on schedule and will complete the job within the required time.

At the time of the completion, contracts will be let for the construction of the roadway itself.

-End-

DEPARTMENT OF PARKS
Arsenal, Central Park
Tel. Regent 4-1000

FOR IMMEDIATE RELEASE
October 3, 1934

The Department of Parks announces that instructions in the use of the new tree moving apparatus, mounted on a 3-ton truck, will be given to employees of the Department of Parks by the makers of this equipment on Thursday (October 4th) morning at 10 a.m., at which time a tree will be moved from the Kissena Park Golf Course, Queens, to the Sixth Avenue and Houston Street Playground, Manhattan. Two of these units have been purchased by the Department of Parks.

-End-

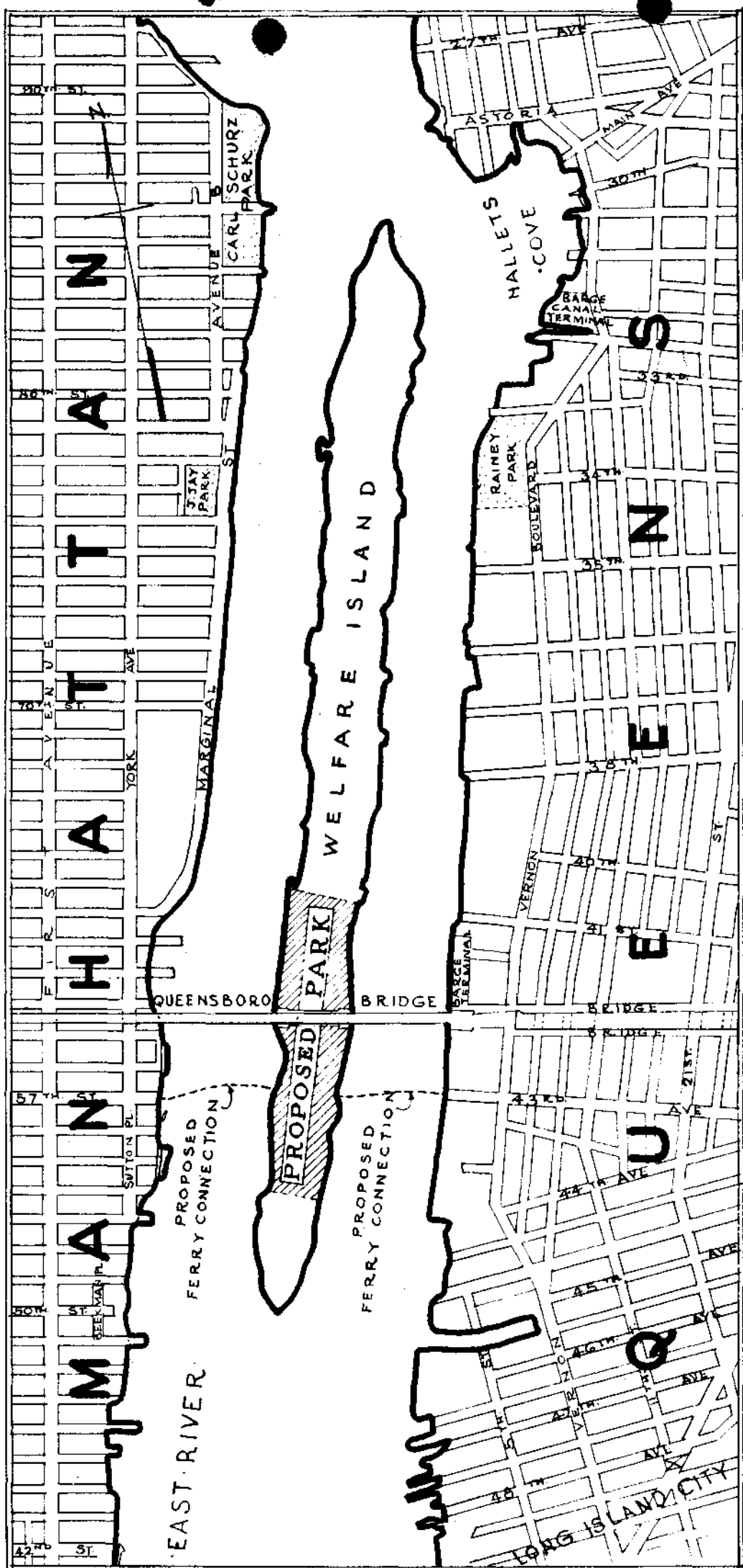
DEPARTMENT OF PARKS
Arsenal, Central Park
Tel. Regent 4-1000

FOR IMMEDIATE RELEASE
October 1, 1934

Pursuant to the order of the Department of Parks, the yacht clubs at Pelham Bay Park have ceased to function as clubs today. Sale and demolition of the structures will be withheld pending the decision of the court in the case instituted by the Morris Yacht Club.

Permission has been given for the continuation of the use of the lockers for the storage of fishing tackle, yachting equipment, etc. until such time as storage facilities are furnished by the Department of Parks. The Department of Parks is establishing a central storage yard for the yachts formerly housed by the five yacht clubs.

-End-



123

FOR RELEASE MONDAY, OCTOBER 1, 1934.

THE CITY OF NEW YORK
DEPARTMENT OF PARKS
ARSENAL
CENTRAL PARK

After an inspection trip on Welfare Island by Mayor LaGuardia and the Commissioners of Correction, Hospitals, Welfare and Parks, the Park Department is requesting release to it of 35 acres of land in the center of Welfare Island, which will be abandoned early next year when the penitentiary and other correctional institutions move from Welfare Island to their new quarters on Riker's Island.

The attached letter to Commissioner MacCormick indicates the scope of the plan. A map is also attached indicating the area in question.

ROBERT MOSES

Commissioner.

THE CITY OF NEW YORK
DEPARTMENT OF PARKS
ARSENAL
CENTRAL PARK

September 28, 1934

Hon. Austin H. MacCormick,
Commissioner of Correction,
Municipal Building,
New York City.

Dear Commissioner:

Following our inspection trip with Mayor LaGuardia yesterday on Welfare Island and the discussion of the impending removal of the correctional institutions from that Island, I am writing officially to ask you to surrender to the Commissioners of the Sinking Fund, as of February 15 next, the area now occupied by the penitentiary and other buildings, known as Lot 10, Block 1373, consisting of 35.810 acres, such lot to be abandoned by you as no longer needed for the purposes of your department and required by the Park Department for park and recreation purposes.

It is essential that action be taken by the Commissioners of the Sinking Fund promptly on this subject so that the Park Department may make engineering surveys and plans for the use of this area next spring, so that arrangements may be made for access by ferry, and so that the necessary program can be worked out for the use of relief workers and relief material and equipment, the tearing down of buildings, storage of material, use of stone on other park projects, etc.

As indicated to you, we plan to use these 35 acres for intensive play to make up for the lack of space for such play on Manhattan Island and to a lesser extent, the adjacent section of Queens. There is a great shortage of space for baseball, football, hockey, handball, basketball, track athletics, field sports and other active sports. There is no possibility of obtaining this needed space on Manhattan Island. Thirty-five acres on Manhattan Island would cost a staggering sum. They will be available at no cost on Welfare Island when you move out.

Very truly yours,



COMMISSIONER.

122

Seeding has been started by the Department of Parks of the remodeled Pelham Bay Golf Course to permit the building of an additional 18-hole course. The club house will be located at the corner of Shore Road and Split Rock Road to serve both courses. The first and tenth tees and the ninth and eighteenth greens are under one central control. This arrangement makes it possible to direct early morning play so that a larger number of golfers can start at the same time, as there will be four starting places adjacent to the club house.

The courses have been designed by the Department of Parks. The yardage for the separate four nine hole courses which constitute this thirty-six hole layout, will vary from 3,000 to 3,300 yards each. In combination, both nines at the Split Rock Course will measure better than 6,600 yards from the back of the tees, and 6,200 yards from the front of the tees. The Pelham Course from the back of the tees will play less than 6,500 yards, and approximately 6,100 yards from the front. With these lengths of holes, and with this design of fairways and greens, there will be provided all types and all kinds of play. In addition to two eighteen hole courses, there will be a larger practice fairway and practice putting green within easy access. Spacious parking areas will be provided adjacent to both courses. Provision has also been made for a caddy house.

A Golf Club House has been designed by the Architectural Division of the Department of Parks and is a contemporary interpretation of the Greek Revival. The entire

(Continued)

exterior is of whitewashed brick with white columns and lintels. The cornices throughout are of wood painted white surmounted with cast iron railings. Green shutters and a base course of bluestone give a striking contrast to the white general scheme, while two bands of bluestone appear on the top of the gray chimneys. The terrace before the portico will be provided with gaily colored tables, chairs and settees. A broad flight of stone steps leads from the terrace to the great lawn. The retaining wall of the terrace is rubblestone with a low parapet wall on which people can lounge while waiting to tee off.

The circular lobby is about twenty-five feet in diameter, vainscotted with Virginia Serpentine Marble, with white stucco walls and contrasting bluestone trim. Here is located the control desk in charge of an attendant, where players may present their credentials, register and receive an assignment. The lobby also gives access to the golf store, the Pro's Shop, and the cafeteria which is served by a modern kitchen.

The locker rooms in connecting wings, with access from the end of the club room, are provided with wash rooms and showers. There is also a ladies' rest room between the locker room and the club room.

Along the entire length of the club room, as it faces the golf course, is a two-story portico fourteen feet wide and carried by six large square columns.

A part of the second story contains office space. The basement is devoted to one of the locker rooms for men and to mechanical equipment, including an oil burner heating plant.

Excavation work for the club house is now under way. All labor and materials for the whole project will be paid for from Work Relief Funds.

-End-

THE CITY OF NEW YORK
PARK CONCERTS — SEASON OF 1934

DEPARTMENT OF PARKS

Central Park Mall

SUNDAY EVENING, SEPTEMBER 30th, 1934

At 8:30 P. M.

NEW YORK STATE SYMPHONIC BAND

GIUSEPPE CREATORE, Conductor

Soloist

LOLA MONTI-GORSEY, Soprano

ALL VICTOR HERBERT PROGRAM

PROGRAM

1. March—"Baltimore Centennial"
2. Selection from "Wonderland"
3. Badinage
4. Gems of Victor Herbert—Compiled and Arranged by Creatore

Including: Babes in Toyland

The Red Mill

The Serenade

Naughty Marietta

Mlle. Modiste

The Fortune Teller

INTERMISSION

5. Panamericana
6. A Kiss in the Dark
LOLA MONTI-GORSEY
7. American Fantasy

This concert is presented by the City of New York and is sponsored by the Division of Recreation, Department of Parks.

G. A. BALDINI, *Director of Concert Division*

GEORGE CRANDALL, Assistant Director

DO YOU ENJOY THE MUSIC?

If so, please help us care for the parks. They are for the pleasure of the Public. To preserve their beauty and usefulness certain rules have been made.
DON'T throw this program or other papers on the ground.
DON'T destroy the plants or shrubs or pick the flowers.
DON'T climb on fences or walls.
DON'T walk on lawns marked with "keep-off" signs.
Kindly refrain from talking and making unnecessary noise while the band is playing.
The Park Department counts upon your co-operation.

DEPARTMENT OF PARKS
Arsenal, Central Park
Tel. Regent 4-1000

FOR IMMEDIATE RELEASE
September 28, 1934

The Park Department announces that a concert consisting exclusively of selections by Victor Herbert will be given Sunday evening (September 30th) at 8:30 p.m. on the Mall in Central Park by the New York State Symphonic Band, one of the units of the Concert Division of the City of New York; conducted by Giuseppe Createore.

This concert was arranged to meet the many requests for an All Victor Herbert program.

-End-

(Program is attached)

DEPARTMENT OF PARKS
Arsenal, Central Park
Tel. Regent 4-1000

120
FOR IMMEDIATE RELEASE
September 28, 1934

The Department of Parks announces that a Harvest Festival will be held at Thomas Jefferson Park, located between East 114th Street and Pleasant Avenue, on Saturday, September 29th, starting at 1:30 p.m.

This is one of the areas which was planted by children under the direction and supervision of the School Farm, which is one of the activities of the Division of Recreation of the Department of Parks.

A brief program by the children of the playground consisting of a salute to the flag, recitations, dances, a little sketch and musical selections will precede the harvesting of the crops, which include beets, carrots, celery, lettuce and other vegetables.

-End-

DEPARTMENT OF PARKS
Arsenal, Central Park
Tel. Regent 4-1000

119
FOR IMMEDIATE RELEASE
September 28, 1934

The Department of Parks announced today that the Claremont Restaurant would be closed on Monday, October 1st, in order to install a heating system adequate for the Winter months and for minor alterations to provide an enclosed space for patrons of the restaurant to enjoy the up-river view.

It is expected that the Claremont Restaurant will reopen during the month of December.

-End-

COPY

118

118

DEPARTMENT OF PARKS
Arsenal, Central Park
Tel. Regent 4-1000

FOR IMMEDIATE RELEASE
September 18, 1934

The Department of Parks announces that with the opening of the new Zoo in Central Park, only perfect and healthy animals will be placed on exhibit and this policy will obtain at all other zoos under its jurisdiction. This is in striking contrast with the policies of former administrations which permitted the acceptance and exhibit of specimens which were unhealthy, deformed or imperfect. In the future only young, healthy, active, and, where possible, paired specimens will be exhibited.

A complete and accurate history of all future specimens will be kept instead of the "hit-or-miss" method of the past which relied principally upon memory and guess work for information regarding the specimens on display in the Park Department Zoos.

Certain animals will be moved into their new quarters, which are nearing completion, in the Central Park Zoo, this Saturday. In the meantime the animals which are unsuited, either because of old age, disease or deformities, for exhibition purposes will be destroyed.

Certain other specimens are to be offered for sale, viz:

"Ackbar" - 4 year old male lion.

"Bluff" - male Leopard - approximately 11 years old.

Bull Buffalo - 12 years old.

Male Zebra.

* * * * *

The Department of Parks will formally open the play area bounded by Chrystie, Forsyth, Canal and Houston Streets on Friday afternoon (September 14th) at three o'clock. This area will be named Roosevelt Park in honor of Sara Delano Roosevelt, the mother of the President.

Mayor Fiorello H. LaGuardia will deliver the principal address at the dedication ceremonies.

The program will open with an introduction and welcome of Commissioner Robert Moses by Harry H. Schlacht in behalf of the neighboring community. Commissioner Moses will then acknowledge the introduction and act as chairman. Mr. Alfred H. Schoellkopf, Chairman of the Temporary Emergency Relief Administration, will speak after Commissioner Moses, and will be followed by William Hodson, Commissioner of Public Welfare.

Mayor LaGuardia will then be introduced by Commissioner Moses and will deliver his dedicatory address.

A flourish will next be sounded by the Park Department Orchestra, followed by a cannon salute at Canal Street, a call to colors, the raising of the American Flag and the playing of The Star Spangled Banner. The National Anthem will be sung by the children in all of the playground blocks. After the rendition of the national anthem, salutes will be again sounded and the children in all blocks with the exception of Block No. 1 (Houston Street) will be given access to the play apparatus. At Block No. 1 the exercises will be delayed sufficiently to permit Mayor LaGuardia, Commissioner Moses and the other speakers to leave the stand and inspect the playground area. The official party will then inspect the facilities of the other blocks.

The area of Roosevelt Park has an interesting history. Once the section was occupied exclusively by well-to-do citizens who later moved uptown and made way for the crowded old law tenements. The area was eventually acquired by the city by condemnation at a cost of \$4,500,000. Various plans were advanced for its use, chiefly low cost housing developments, but the site itself was unsuited for the purpose and this together with the inability to bring the rentals within the means of those living in the area resulted in the abandonment of these housing programs.

The site lends itself admirably for use as a playground. No other development of the property could have served this crowded community so well.

Roosevelt Park contains all types of play apparatus, wading pools and recreation buildings. Five of the seven blocks will be opened on Friday and the entire area will be completed before the coming winter.

Musical selections will be rendered by the Park Department Orchestra.

The dedication program will be broadcast by the National Broadcasting Company's New York State hook-up, the American Radio System with fourteen stations between Portland, Maine and Richmond, Virginia, as well as by Stations WNYC, WOV and WNEW. A public address system will be installed to facilitate the transmission of the exercises within the area.

-End*

CHRISTIE-FORSYTHE

9:00 A. M. Park employees from all boroughs to be on posts.

Public to be completely excluded
Police Detail will be on duty at 8:30 A.M.
Final checkup by complete staff as follows:
Jennings, Crane, Wood, J. H. Field, Higgins,
Liljeback, Kanny, Walsh, Sorace, McLean, Stout
and Moyer. Heaslip and E. A. Field will be at
Bryant Park with Mr. Sweeney.

The following assignments have been made at Roosevelt Park:

Incharge of Block #1, prior to arrival of staff -
J. V. Mulholland, assisted by W. Moyer.
Entrance Gate - E. A. Field (Mr. Field will have left
Bryant Park earlier with Mr. Sweeney).
Ushers at foot of ramp - J. H. Field.
Ushers west side - Frank Sorace.
Ushers east side - Moyer.
Music - Frank Higgins.
Playground activities in Block #1 - Mulholland and Miss McKenna.
Color ceremony - Captain Stout.
Ordinance - J. McLean.
General Park Personnel - Heaslip, Walsh.
Police arrangements - Major Crane and Inspector Bannon
Inspector Pierne will be in charge of police.

2:35 P. M. Admission of public to park.

Public will be kept in upper levels and excluded from playground
area by park personnel.

2:40 P. M. Musical program by band as follows:

"Souza's March"
"Italian March"
"Jewish March"

During playing of first selections, school children will march into
playgrounds, occupying area set aside for them.

On the arrival of the Mayor, and the official party, the band will
stop whatever selection it is playing and six trumpeters will play
a fanfare directly followed by "Hail to the Chief."

One hundred and twenty seats, which represent six bays of the grand
stand, are to be reserved for the special guests, and of these seats
a number shall be set aside for the official party coming from Bryant
Park. Mr. Sweeney will ascertain this number before he leaves Bryant
Park. The six bays will be in the center of the grandstand and chief
ushers on both sides are to be well instructed in keeping them free
for the special guests. A checker will count all guests arriving at
Houston Street entrance.

The stands seat 480 people.

If it appears that there will be more attendance than seating arrangements have been provided for, the balance of the folding units, which will have been placed on two trucks - 50 on each - will be placed on either side of the upper level, facing in. The trucks will stand by Chrystie-Far sythe at 12:00 noon, manned with sufficient properly uniformed personnel to unload them, and place the seats in case of emergency.

2:59 P. M. Conclusion of band program.

3:00 P. M. Preliminary radio announcement. NBC, WMCA and WNYC will participate. The latter will commence at 2:45 and conclude at 3:45.

3:00 to 3:01 Professional broadcasting to get program on air.

3:01 to 3:04 Introduction of Robert Moses by Harry H. Schlacht.

3:05 to 3:13 Robert Moses.

3:13 to 3:14 Introduction of Alfred Schoellkopf by Robert Moses.

3:14 to 3:17 Alfred Schoellkopf.

3:17 to 3:18 Introduction of Commissioner William Hodson by Robert Moses.

3:18 to 3:21 Commissioner Hodson.

3:21 to 3:22 Introduction of the Mayor of the City of New York by Robert Moses.

3:22 to 3:30 Mayor of the City of New York.

3:30 P. M. Conclusion of Broadcast.

At the introduction of Mayor LaGuardia, and as he rises to speak, the six Aida Trumpeters will take position on both sides of the stand facing north.

The signal-man will take position at northwest corner of speaker's stand, facing north.

At conclusion of Mayor's speech, the six Aida Trumpeters right-about-face and play a fanfare.

Signal-man marches to point ten paces north of stand, about-faces and immediately semaphores signal-man on roof of recreation building. The latter signal-man immediately drops signal flag making a signal for saluting pieces to be fired, one shot each, in rapid succession. (If either shot misfires, do not attempt reloading.)

Following salute by Ordinance, the six trumpeters play call to colors.

All face flag. Children about-face, facing flag. Flag is run up by color guard.

As flag reaches peak and call to colors is concluded, the trumpeters rejoin band during ten second interval.

All hands, at conclusion of call to colors, give right-hand salute.

At conclusion of two second interval, augmented by the six Aida Trumpeters playing the National Anthem, all hands maintain right-hand salute between first bars and conclusion.

Children in all blocks will sing the Star Spangled Banner under leadership of playground supervisors.

The conclusion of the National Anthem will be marked by the opening of the playground apparatus to the children, who have already assembled in all other blocks except #1. Children will also be admitted at the entrance to all blocks, except No. 1.

Following National Anthem, with band leading, the children in Block 1 will face in and sing "America The Beautiful".

In Block #1 at about

3:35 P. M. The prepared exercises will be put on. This program will last for about 20 minutes.

When the Mayor, Commissioner and immediate party leave the stand, following the completion of a number, a pause in the dance program sufficiently long to permit the escort of distinguished guests from the upper level to the playground area will be inserted.

When they join the Mayor and his party, the entire group will proceed on foot to inspect Blocks 2, 3, 4 and 6.

4:00 P. M. Conclusion of exercises.

Children from the group assembled in Block 1 will be permitted on the apparatus.

5:00 P. M. Dismissal of all regularly assigned employees.

Meeting of staff members at playground on East 7th Street near Bowery.

September 11th, 1934

MEMORANDUM ON ORDER OF SPEAKERS AT DEDICATION OF ROOSEVELT PARK

3:00 to 3:01 Professional broadcasting to get program on air.

3:01 to 3:04 Introduction of Robert Moses by Harry H. Schlacht.

3:04 to 3:12 Robert Moses.

3:12 to 3:13 Introduction of Alfred Schoellkopf by Robert Moses.

3:13 to 3:16 Alfred Schoellkopf.

3:16 to 3:17 Introduction of William Hodson by Robert Moses.

3:17 to 3:20 William Hodson.

3:20 to 3:21 Introduction of the Mayor of the City of New York by Robert Moses.

3:21 to 3:29 Mayor of the City of New York.

3:29 to 3:30 Professional broadcasting to get program off air.



· DEPARTMENT OF PARKS ·
CITY OF NEW YORK
HON. FIORELLO H. LA GUARDIA MAYOR

OPENING CEREMONIES
ROOSEVELT PARK ·
CHRYSTIE FORSYTHE CANAL AND HOUSTON STS. N.Y.C.
· FRIDAY SEPTEMBER 14TH 1934 ·

· P R O G R A M ·

2.40 TO 3.00 P.M. MUSICAL PROGRAM PARK DEPARTMENT BAND
SOUSAS MARCH "STARS & STRIPES FOREVER"
ITALIAN MARCH
JEWISH MARCH

3.00 TO 3.01 P.M.

PRELIMINARY RADIO ANNOUNCEMENT, STATIONS
W.M.C.A AND W.N.Y.C AND THE N.B.C NETWORKS

3.01 TO 3.04 PM

INTRODUCTION OF HON. ROBERT MOSES
COMMISSIONER OF PARKS
BY MR. HARRY L. SCHLACHT
EDITOR OF THE EAST SIDE NEWS

3.05 TO 3.13 P.M.

HON. ROBERT MOSES

3.13 TO 3.14 P.M.

INTRODUCTION OF MR. ALFRED SCHOELLKOPF
CHAIRMAN TEMPORARY EMERGENCY RELIEF
ADMINISTRATION STATE OF NEW YORK
BY COMMISSIONER MOSES

3.14 TO 3.17 P.M.

MR. SCHOELLKOPF

3.17 TO 3.18 P.M.

INTRODUCTION OF HON. WILLIAM HODSON
COMMISSIONER OF PUBLIC WELFARE CITY OF NEW YORK
BY COMMISSIONER MOSES

3.18 TO 3.21 P.M.

COMMISSIONER HODSON

3.21 TO 3.22 P.M.

INTRODUCTION OF HON. FIORELLO H. LA GUARDIA
MAYOR OF THE CITY OF NEW YORK
BY COMMISSIONER MOSES

3.22 TO 3.30 P.M.

MAYOR OF THE CITY OF NEW YORK

3.30 P.M.

CONCLUSION OF BROADCAST

3.31 TO 3.35 P.M.

FLAG RAISING CEREMONIES

3.35 TO 4.00 P.M.

CHILDRENS EXERCISES UNDER THE
DIRECTION OF THE DEPARTMENT OF
RECREATION OF THE DEPARTMENT
OF PARKS

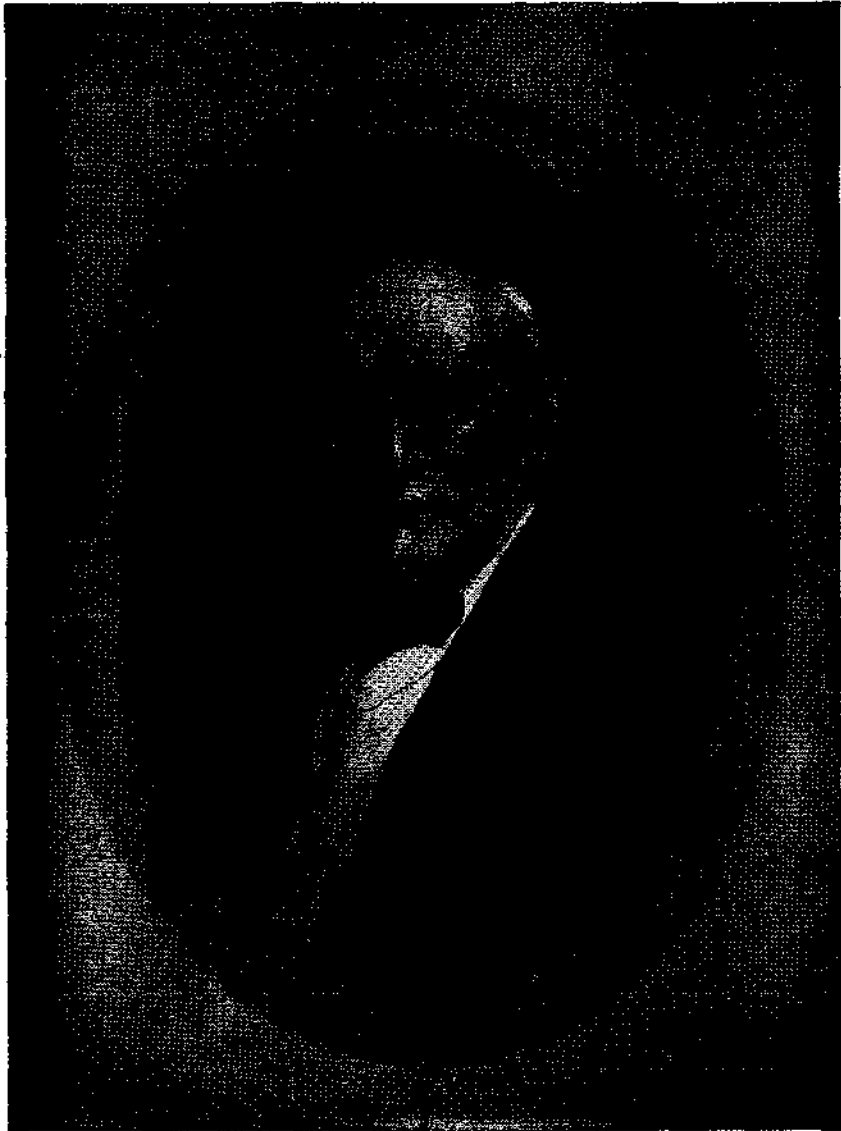
THE CITY OF NEW YORK
DEPARTMENT OF PARKS
ARSENAL, CENTRAL PARK

31A-1

87
FOR IMMEDIATE RELEASE

September 1, 1934

The Department of Parks announces that a concert
by the Naumburg Orchestra, conducted by Rudolph Thomas,
will be given on the Mall of Central Park on Monday
evening, September 3, 1934, at 8:30 P.M. The play or-
iginally scheduled for that evening has been cancelled.



ELKAN NAUMBURG

LABOR DAY CONCERT

MONDAY, SEPTEMBER 3rd, 1934

EIGHT-THIRTY P. M.

CENTRAL PARK :: ON THE MALL

THE NAUMBURG ORCHESTRA, Rudolph Thomas, *Conductor*

THE MALL — CENTRAL PARK
MONDAY EVENING, SEPTEMBER 3rd, AT 8:30 O'CLOCK
THE NAUMBURG ORCHESTRA
RUDOLPH THOMAS, *Conductor*

Program

"The Star Spangled Banner"

1. Overture to the "Flying Dutchman" *Wagner*
2. a) Entr'acte to "Messidor" *Bruneau*
b) Intermezzo from "The Jewels of the Madonna"
Wolf-Ferrari
3. Bacchanale from "Tannhauser" *Wagner*
4. a) Intermezzo from "Cavalleria Rusticana" . . . *Mascagni*
b) Preludes to Act I and II of "Tales of Hoffmann"
Offenbach

INTERMISSION

5. Overture "Merry Wives of Windsor" *Nicolai*
6. Allegro con Grazia from Symphony Pathetique"
Tschaikowsky
7. Four Preludes to "Carmen" *Bizet*
8. Waltzes from "Die Rosencavalier" *Strauss*
9. Capriccio Italien *Tschaikowsky*

"America"

THIS CONCERT is contributed by Mr. WALTER W. NAUMBURG and Mr. GEORGE W. NAUMBURG, sons of Mr. ELKAN NAUMBURG, who donated the bandstand on The Mall and lived to see it put to the purpose he had in mind of erecting a veritable Temple of Music.

Mr. ELKAN NAUMBURG had been impressed with the need of an adequate bandstand in Central Park by reason of his custom, long years in practice, of contributing Orchestral Concerts of high quality, in the cause of good music for the people, on three holidays, Decoration Day, Fourth of July and Labor Day. His sons, continuing this custom in his memory, have added a fourth concert to the NAUMBURG series by giving a similar concert on July 31st, the anniversary of their father's death.

THE NAUMBURG concerts for the season of 1934 are therefore set down for May 30th, at 8:30 P. M., July 4th, at 8:30 P. M., July 31st, at 8:30 P. M., and September 3rd, at 8:30 P. M. These dates to be remembered by lovers of good music.

CITY OF NEW YORK

HON. FIORELLO H. LAGUARDIA, *Mayor*

New Release 115

The Department of Parks announces the receipt of a copy of the following letter which the Hon. James E. McDonald, Chief City Magistrate, has sent to all Magistrates, on the subject of cleanliness and peddling in the parks:

CITY OF NEW YORK

CITY MAGISTRATES' COURTS

500 Mulberry Street

New York

Number 36 - 1934

August 31, 1934

To the Magistrates,

City Magistrates' Courts.

Gentlemen:

I have received a communication from Park Commissioner Moses, dated August 9, 1934, in which he expresses his grateful appreciation for the attitude taken by a great number of the Magistrates in their efforts to assist the Park Department in its endeavors to keep the park clean and attractive.

However, the most serious feature of the situation is the great number of peddlers brought into our courts for invading the parks, who are unlicensed and who are well aware that they cannot get a license to peddle their wares in the parks, and yet persist in this practice to such an extent that the record shows nine or ten arrests or convictions against some of these individuals for violations of a similar character. This practice should, of course, be discouraged, more especially as concessionaires are paying the City of New York substantial fees for the exclusive privilege of doing business within the park limits.

Furthermore, I believe it is the intent and desire of all the Magistrates to give Commissioner Moses their support and cooperation to the fullest extent possible in the great work that he is doing for the benefit of the public in the parks of this City and I, therefore, earnestly urge your special attention to this class of cases in the future.

Very respectfully yours,

(Signed)

James E. McDonald.

Chief City Magistrate.

-end-

The Venetian Water Carnival arranged by the Division of Recreation of the Department of Parks has been postponed, because of weather conditions, to TUESDAY, WEDNESDAY and THURSDAY, September 11th, 12th and 13th, 7:30 to 11:30 P.M.

There will be dancing on the Mall from 7:30 to 9:30 P.M. on each of these evenings and at the close of the dancing the Venetian Water Carnival will open on the Lake near the Mall and close at 9:30 / 11:30 P.M. There will be a concert, dancing and singing.

Many of those taking part in this Carnival will be dressed as Venetian peasants and will be in gondolas and swan boats. These gondolas will be brilliantly lighted and will make a colorful scene.

Groups of singers dressed as Italian peasants will participate from the Music Department of the Works Division of the Department of Public Welfare as will a 60-piece orchestra led by Mr. Guiseppe Creatore.

In many of the smaller boats will be singers accompanied by mandolins. The Venetian folk dances will be given by the older girls from the clubs of the Park Playgrounds. Some of the Playground Directors of the Department of Parks will also take part in the dancing and some of the members of the Division of Recreation will be dressed as Italian peasants.

A number of Italian Societies are co-operating with the Department of Parks in the staging of the carnival.

A display of fireworks during the Carnival will close the festivities, the program for each evening being as follows:

1. Approach of the Doge.
2. Father Neptune and his Nymphs meet the Doge.
3. Ascent of Father Neptune to his throne.
4. Dance of the Nymphs.
5. Orchestral selections.
6. Italian dancers - "Sorrentina" by the Italian Choral Society; in charge, Miss Santina Algoni.
7. Songs.
8. Fireworks display.

News Release #113

For the first time in the history of recreation in New York City, a Venetian Water Carnival will take place, tomorrow, *(September 7, 8 and 9th)* from 8:30 to 10:30 P.M. This Carnival will take place at the 72nd Street Lake in Central Park; the nearest entrance to this lake is 72nd Street and Fifth Avenue.

An effort will be made to reproduce a Venetian Carnival night at which there will be a concert, dancing and singing. Many of those taking part in this Carnival will be dressed as Venetian peasants and will be in gondolas and swan boats. These gondolas will be brilliantly lighted and a colorful scene will be depicted. Groups of singers representing Italian peasants will be supplied by the Music Department of the Works Division of the Department of Public Welfare and a 60 piece orchestra will be led by Mr. Creatore.

In many of the smaller boats there will be soloists accompanied by mandolins. The dancing will be performed by the older girls from the clubs of the Park playgrounds. Some of the playground directors of the Department of Parks will also take part in the dancing and a number of the members of the Division of Recreation will be dressed as Venetian peasants.

Cooperation also has been received from some of the Italian Societies in New York City.

There will be a display of fireworks during the Carnival.

The following is the program:

1. Approach of the Doge
2. Father Neptune and his nymphs meet the Doge
3. Ascent of Father Neptune to his throne
4. Dance of the nymphs
5. Orchestral selections
6. Italian dancers - "Sorrentina" by the Italian Choral Society; in charge, Miss Santina Alongi
7. Songs
8. Fireworks display

End

In Release,
Sept 9, 1934

112

The Department of Parks announced its plan today for the development of Marine Park in Brooklyn, which will be one of the largest parks in the city when completed.

At the present time much of the area is marsh land and a considerable part of it is under water. These sections will be made usable for park purposes by hydraulic fill.

The design is broad in scope and anticipates the demand for every phase of recreation.

The yacht harbor adjacent to Jamaica Bay, will supply facilities for all types of pleasure craft, and every consideration will be given to the needs and requirements of canoeists, and of yachting, canoe-sailing and motor boat enthusiasts. Ample provision is being made for the storage of this craft throughout the entire year. Shops and gas stations will be conveniently located.

A large boat house will be erected on the harbor. It will contain a modern restaurant and bar, and all other necessary facilities for the convenience and comfort of those interested in boating. On either side of the club house, facing the yacht harbor, ample parking space will be available.

On the inland side of the yacht harbor there is to be a large basin for model boats. This faces the club building on the opposite side from the yacht harbor.

West of the model yacht basin is a large amphitheatre, the stage of which has a lagoon for its background and setting.

Northeast of the model yacht basin there is to be a recreational center containing three baseball diamonds, football and lacrosse fields, bocchia courts and an area for archery. A modern field house will serve this group.

Stables with stalls for about 100 horses and a riding ring, with parking space for 500 cars on two sides, are located within a separate park area northwest of the Shore Drive near the Flatbush Avenue entrance. The ring may be used for show purposes, and all of the bridle paths either start from, or terminate at this point.

(Continued.)

Midway between the Shore Drive and Avenue U on the Flatbush Avenue side of the park there is to be a large stadium designed to accommodate all athletic events. The stadium overlooks a canoe landing on the canal, with the golf club house in the distance. The areas around the stadium will contain apparatus for the very young children as well as sports facilities for older children. A large parking area will be provided in the area between the stadium and Flatbush Avenue.

On either side of the stadium there also will be two large informal recreational areas. These meadows will be used for baseball, football, lacrosse and cricket.

The canoe basin and the canoe club house at the Avenue U end of the park are accessible from a large parking space adjoining a recreational area on the opposite side of Avenue U. The canoe basin forms one end of the canal, which is roughly rectangular in form, and will connect with the lagoon and separate the golf courses on the island from the remainder of the park. The canoe club house has accommodations for 600 canoes and all necessary facilities. Boats will be available for hire for trips around the island. Two 18-hole golf courses have been designed for the island area.

The old Gerrittsen Mill, one of the few tidewater mills still standing in this section of the country, will remain in its original location and is to be completely restored.

There will be a play area at the corner of Avenue X and Gerrittsen Avenue, accessible to two schools in the immediate vicinity.

The golf and tennis club house located on the Gerrittsen Avenue side of the park, which will connect with the golf courses by means of a bridge, is directly opposite the stadium. It will contain locker space, a lounge and a restaurant. Ample parking space will be available between the club house and Gerrittsen Avenue.

The tennis courts will be located northwest of the club house. There will be fifty standard courts and three exhibition courts, with a grandstand for spectators on either side.

(Continued.)

On the opposite side of the club house will be an arboretum for the display of native plants, such as perennials, small bushes and trees.

The park has been designed to entirely eliminate cross traffic. All of the roads will be for one-way traffic only. Pedestrian crossings will intersect the roadways by means of underpasses. Each center of activity has an individual and conveniently located parking area to accommodate about 4,000 cars.

The bridle paths on the mainland will wind around the island containing the two golf courses. Pedestrian paths will connect all recreational centers and points of beauty and interest. Ample benches, drinking fountains, comfort facilities and shade are incorporated in the plan.

The park roadways are laid out to take full advantage of the area and to provide convenient access to all facilities. In addition to the circumferential road around the whole park and feeders from the principal abutting streets and avenues, a through parkway is planned to cross the park, south of the golf course. This parkway will form a continuation of Emmons Avenue which is planned to be a part of the ultimate Shore Drive. This main artery through the park connects with a traffic circle at Flatbush Avenue. The approach to the proposed suspension bridge over Rockaway Inlet rises from this circle. This bridge will form a direct connection between Marine Park and the ocean front of Jacob Riis Park.

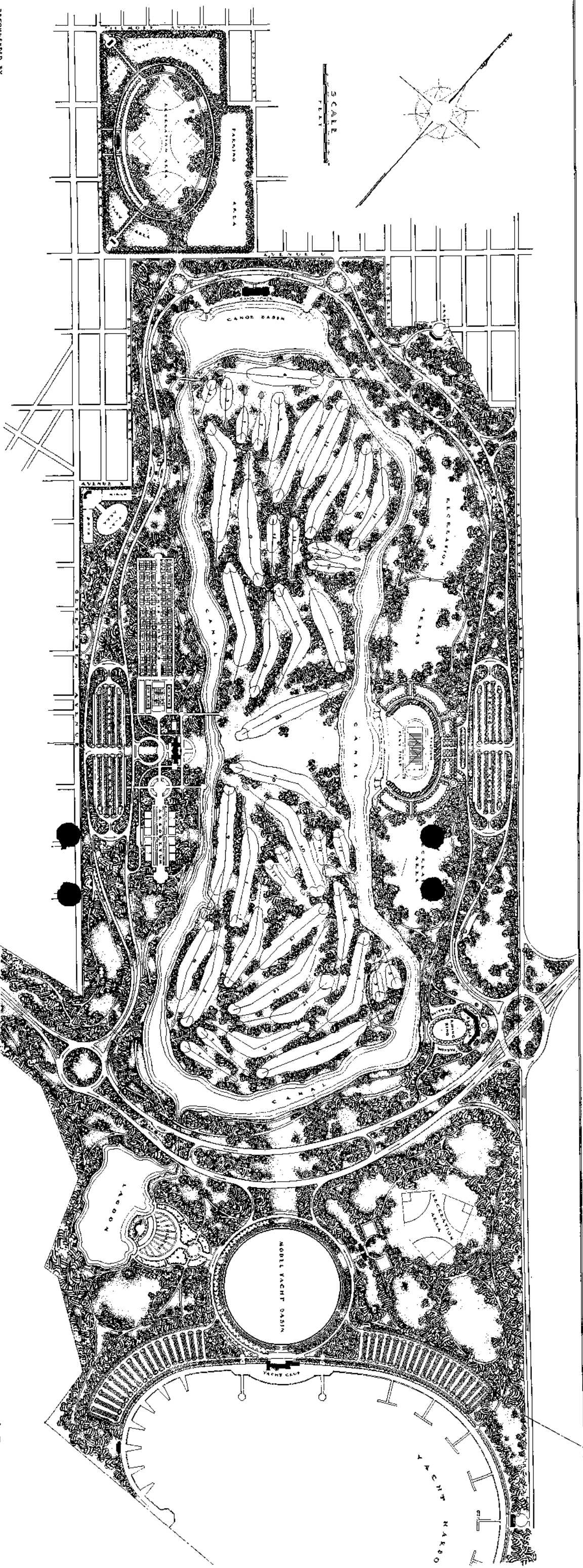
No swimming area is provided in the plan of Marine Park. The waters of Rockaway Inlet are unsatisfactory for swimming. Provision has been made, however, in the scheme of the development to leave unimproved areas both east and west of the boat basin, which will be developed as swimming beaches when the waters of the Inlet are satisfactory for swimming.

This 2,000 acre park, when completed, will be one of the country's largest, most modern and complete recreational centers.

(End.)

PREPARED BY
 THE
 PARKS DEPARTMENT
 CITY OF NEW YORK
 ENGINEER IN CHARGE
 JOHN J. MURPHY
 ASSISTANT ENGINEER
 EDWARD J. MURPHY

DEVELOPMENT PLAN FOR MARINE PARK BROOKLYN DEPARTMENT OF PARKS NEW YORK CITY



#109

More than 2000 children from all parts of New York City will be taken to Jacob Riis Park, Rockaway, L.I., next Monday where they will enjoy a full day of swimming and entertainment.

At least 700 children from the various orphanages in Queens alone will be transported by bus to Riis Park and will arrive there about 10:30 o'clock in the morning. Children from Manhattan will leave for the Park on the COMMANDER, at 10 a.m. from the Rainbow Fleet Dock at 129th Street and the Hudson River, and at 10:45 a.m. from the Rainbow Fleet Dock at Pier #1 the Battery. These transportation facilities are provided through the courtesy of the Rainbow Fleet and several bus companies.

A marionette show, a treasure hunt, story telling and games are among the interesting features which have been arranged for the children besides surf swimming. Dressing facilities will be provided and refreshments will be served.

This outing is being sponsored by the Board of Aldermen with the cooperation of Jacob Riis Park and the Department of Parks. The Honorable Edward E. Buhler will act as host and Uncle Don of Radio fame will hold a club meeting.

Among the persons of prominence who will accompany the group on the boat trip from Manhattan are: Comptroller McGoldrick, Deputy Comptroller Early, Chairman of the Board of Aldermen Majority Group Sullivan, Chairman of the Board of Aldermen Minority Group Curran, President of Board of Education George F. Ryan; Superintendent of Schools Dr. Harold Campbell, Thirty-five members of the Board of Aldermen will take the boat to Riis Park.

-continued-

An honorary committee of the following will also attend:
Hon. William Groat, Jr., Hon. Warren B. Ashmead, Hon. George Grau,
Sidney Payner, William Carter, George L. Knott, Miss Olive Hatch,
Frank Keller, George Colyer, Richard Lonahan, Rev. Paul Board,
Charles Wilcox, T. E. Jordan, John Sheppard, Frank Simon and
Frederick D. Wood; Dr. S. A. Cohen will act as General Chairman
of Activities and E. H. Fenstermacher is in charge of transportation.

-end-

CHILDREN'S DAY OUTING AT JACOB RIIS PARK

MONDAY, AUGUST 27, 1934

SCHEDULE

*News Release
109.*

10:00 A.M. Boat trip from Manhattan via Rainbow Fleet with 1200 children.

10:00 A.M. -- COMMANDER leaves 129th Street on Hudson, Manhattan

10:45 A.M. -- COMMANDER leaves Pier #1, Battery, Manhattan

10:30 A.M. Queens County Orphanages (Hon. Edward E. Buhler, Alderman, host) arrive at Riis Park with 700 children

Queens County Orphanages dress and swim at beaches #2 to #6

12:00 P.M. Noon lunch served to Queens County Orphanages

12:45 P.M. Rainbow Fleet arrives with 1200 children from Manhattan

1:00 P.M. Rainbow Fleet children swim at beaches #2 to #6 and have lunch

2:30 P.M. Uncle Don of WOR greets all children on the playground and holds "club meeting"

3:00 P.M. Marionette show on playground

St. Malachy's Catholic band of 40 arrive

3:45 P.M. Treasure hunt for children. Meet in front of Administration Building for instructions and cues

4:15 P.M. Refreshments for children holding tickets

4:30 P.M. All Rainbow Fleet children dress by small groups

St. Malachy's Catholic Home Band of 40 at Bandstand by flagpole

5:00 P.M. Flag lowering ceremonies at Flagpole

5:05 P.M. All children must dress

5:15 P.M. Rainbow Fleet children start by buses to 98th St. Docks, Rockaway Beach

St. Malachy's Band leaves by bus

6:15 P.M. Rainbow Fleet sails from 98th St. dock, Rockaway Beach.

Orphanages from Queens County leave by bus.

Columbus Park, which is located in a heavily congested area, bounded by Bayard, Mulberry, Park and Baxter Streets, is being remodelled to greatly increase the play space in the existing park. The play area fronting on the Park Street side of the park will be more than doubled in size and will be divided by a recreation building and two planted strips into two sections, one for the younger children and the other for older children.

The play area for the smaller children will front the recreation building and have apparatus areas paved with cork asphalt and equipped with jungle gyms, swings and see-saws on both the Baxter and Mulberry Street sides. A large wading pool, centrally located and separated from the apparatus areas and recreation building by wide bluestone walks, will be provided with three double head showers. Entrance to the pool can be gained only by passing through a chlorinated foot bath.

A large game field also will be provided for the older children. This field will be of levelled sandy clay subsoil, free from all refuse and large stones, and will contain a line of large swings in one corner, suitable for older children. The field will be enclosed by a wrought iron fence on which will be mounted flood lights, to facilitate the use of the field after dark. This fence is a part of the original enclosure.

The recreation building, which may be entered from either area, will house separate comfort stations for the younger and older children. Both play areas will be suitably fenced for the protection of the children.

(Continued)

There will be a formal park area at the Bayard street end of the park. This will include the existing comfort stations and pavilion. The design has been changed to provide a larger area to contain plantings of trees, shrubbery and grass. All existing facilities and plantings will be used as far as possible. A large flagpole will be erected in the square facing the pavilion.

This re-design of the park was made to give the children more play space and also to provide a more pleasant recreational area for adults. Numerous benches and drinking fountains will be placed throughout the park. The entire area will be enclosed by a fence of appropriate design.

-end-

Columbus Salas

New Release #107

The Department of Parks will open fifteen new playgrounds during September and October.

On Friday, September 7th, Jackson Square, located at Eighth Avenue and Horatio Street, Manhattan, will be completed and opened to the public. This area has been designed principally for the use of mothers and infants and will be provided very generously with shade trees and benches. Fort Tryon Park Playground, at Riverside Drive and Broadway, Manhattan, will be opened the same day. This is a part of the tract bought and partially developed by John D. Rockefeller, Jr. Work relief forces are completing the playground section. This area will contain a wading pool, a field house and shaded play spaces.

On Friday, September 14th, the Park Department will open five city blocks of the Chrystie-Forsythe development in Manhattan. This will contain comfort stations, wading pools, game areas and complete playground apparatus. All areas outside of the playgrounds are to be open to the public, with paved walks and plantings to provide shade. This area extends from Chrystie Street to Forsythe Street.

On Saturday, September 22nd, the two playgrounds on Houston Street, one at the corner of Sixth Avenue, and the other in the block between First and Houston Streets at Ludlow Street, Manhattan, will be opened. This property was turned over to the Department of Parks by the Board of Transportation. It will have a formal park area in addition to the playground.

(Continued)

On Tuesday, October 6th, the playground at Houston Street, between Essex and Norfolk Streets, Manhattan, will be opened, and it will have a shelter house, basketball courts and complete playground apparatus. The playground at Corona Avenue and 102nd Street, in Queens, also will be opened on October 6th.

On Saturday, October 13th, the playground at Sheriff, Broome and Delancey Streets will be opened, as will two blocks of the Leiv Eiriksson playground, located at 4th Avenue and 66th Street, Brooklyn. Another playground which has been given to the city by the German Home for Recreation of Women and Children, and developed by the Park Department in part, from funds supplied by this source, will be opened at Bay 46th Street and Cropsey Avenue, Brooklyn, which will be known as the Dreier Offerman Playground. This latter area overlooks Gravesend Bay and contains a field house, a play pavilion and complete playground equipment.

On Saturday, October 20th, the playground at Cherry, Monroe and Gouverneur Streets, Manhattan, also the Flushing Memorial Playground, located at 149th Street and 25th Avenue, in Queens, will be opened. The Flushing Memorial Playground has baseball diamonds and handball and basketball courts.

On Saturday, October 27th, recreational areas at Fulton Street and Classon Avenue, Brooklyn, and at Park Avenue and Taaffe Place, Brooklyn, as well as the playground at Old Fort #4, located at Sedgewick and University Avenues, in the Bronx, will be completed and opened.

These fifteen additional playgrounds, which are to be opened during September and October by the Department of Parks, make a total of 38 new areas, completely equipped with modern recreational facilities, which have been added to the park system during a period of four months by the new administration.

DEPARTMENT OF PARKS
ARSENAL BUILDING

Pub. Release #106.
FOR IMMEDIATE RELEASE
AUGUST 18, 1934.

Regent 4-1000

Two Metropolitan Women swimming champions will meet on Sunday afternoon in a challenge race in the A.A.U. program to be held at Jacob Riis Park in Rockaway, beginning at 2:30 p.m.

The two young ladies, Dorothea Dickinson and Elsie Ferrill of the Women's Swimming Association, have been trading championships during the entire season and on Sunday they will have a chance to meet over a 440 yard rough water course.

Miss Dickinson who holds the 100 yard Metropolitan title, was recently defeated by Miss Ferrill for the Metropolitan 100 meter title. Another 100 yard titleholder, Dolores Smith, junior national champion, is entered in the 440 event along with Catherine Goets, Marie Fechette, Margaret Barn and Valerie Phillips, all of Women's Swimming Association.

A two-mile ocean swimming race to be held along the ocean front at Riis Park has brought out more than 50 entries from nearly 20 local organizations belonging to the Metropolitan A.A.U. district. The New York Athletic Club has entered Ray Ruddy, Don Ruddy, Walter Spence, Leonard Spence, Eddie Lee, Leo Geibel and others.

Surf board races, flat boat rowing races and other aquatic events will be on the day's program. The men's ocean race is open to all registered members of the Amateur Athletic Union. and trophies and medals will be awarded to the first twelve winners. The Women's swimming race is open only to members of the Women's Swimming Association.

-End-

August 15, 1934.

105

Mr. Nelson:

The Dance Recital - Maria Theresa - Friday Evening
Aug 17th 8.30 P.M. Prospect Park
Municipal Symphony Orchestra
Harry Meyer, Conductor

Attached are copies of program for the above dance recital
Friday evening at Prospect Park.

Will you be good enough to ask the newspapers to use the
photograph of Maria Theresa which was sent to them on the occasion of
her recital at the Mall Central Park on Saturday evening, July 21st,
at that time photographs of Maria Theresa were sent to all the papers.

Mr. Baldini requested that you do what you can to have the
newspapers use the photographs sent to them at that time in carrying
the publicity for the Recital on Friday evening at Prospect Park?

James V. Mulholland

Director of Recreation

Department of Parks
Arsenal
Central Park
Regent 4-1000

Released by Miss Kate
For immediate release

August 15th, 1934

104

104 Ocean Swimming Championship - A.A.U.

More than one hundred entries from twenty of the foremost swimming clubs will compete in the two mile ocean swimming championship at Jacob Riis Park, Rockaway,,next Sunday afternoon. The meet is sanctioned by the A.A.U.

Among the stars entered in the race are, Ray Ruddy, metropolitan one mile and 880 yard champion, seven times winner of the Metropolitan long distance title and seven times winner of the President's Cup; Don Ruddy, water polo star and schoolboy champion; Eddie Lee, National long distance champion; Walter Spence, National title holder; Leonard Spence, National and world's record holder and Leo Geibel, N.Y.A.C. star.

Rowboats will follow the swimmers over the two mile course from start to finish and pick up competitors who become tired. Silver trophies will be awarded first, second and third places and gold medals given to the first eight swimmers crossing the finish line.

Members of the Women's Swimming Association and other National swimming stars, including Leonor Knight and Alice Bridges have been invited to compete in a 440 yard scratch event as an exhibition.

At the conclusion of the swimming races, twelve flat-bottomed row boats will engage in a one mile race around the course. Prizes will be given and none but expert swimmers will be allowed to participate in this event. Surf boat races are also scheduled.

All entrants must be registered with the Amateur Athletic Union. Entries will be accepted until next Saturday at Jacob Riis Park Administration Building.

DEPARTMENT OF PARKS
Arsenal, Central Park
Tel. Regent 4-1000

Put Release
103
FOR RELEASE SUNDAY
August 12, 1934

The first two mile men's ocean swimming championship of the Rockaways will be held at Jacob Riis Park on Sunday, August 19th. Already entered are Olympic and National swimming champions, including Ray Ruddy, Walter Spence, Leonard Spence, Don Ruddy, Eddie Lee, Leo Geibel, and others. The event is open to all swimmers registered with the Amateur Athletic Union, and silver trophies will be awarded to winners. Medals will be awarded to the first eight swimmers who cross the finish line in the two mile swim. The event is sanctioned by the Metropolitan A. A. U.

Rowboats will follow the swimmers, and a rowboat race will be held after the swimming race.

-End-

GOWANUS PLAYGROUND

The Gowanus Playground will provide recreational facilities for both young and old. It is a square block in area, bounded by Fourth and Fifth Avenue and Third and Fourth Streets.

The entire area will be fenced, and concreted walks provided on Fourth and Fifth Avenue ends. The Third and Fourth Street sides will have hexagonal block walks flanked on either side by sodded strips in which trees will be planted.

A novel feature of this playground is the arrangement of flood lamps so that the entire area may be illuminated.

The playground will be divided into four sections and each section will run the entire width of the playground.

Starting at the Fourth Avenue end will be a general play area, one hundred and seventy feet by three hundred and twenty feet. The surface of this area will be of a sandy clay sub-soil, dragged and rolled level. It will have a ten foot woven wire fence on three sides. The Fourth Avenue side will face a raised terrace of bluestone flagging from where an unobstructed view of this play area may be had.

Entrance to the children's playgrounds will be gained through the second and central area which will consist of the bluestone terrace, the recreation building and a small planted area. The terrace will be provided with drinking fountains, benches and a large flagpole. The recreational building, constructed of brick from the old Gowanus house and following its general plan, will house the comfort stations and storage space.

The third area for smaller children, enclosed by the recreation building on one side and a six feet iron picket fence on the other three sides, will be one hundred sixty by one hundred and eighty feet, asphalt paved with the exception of a large wading pool in the center. This pool when drained

may be used as basketball courts. The water of the pool will be chlorinated and the children will have to pass through an antiseptic foot bath before entering the pool. There will also be suitable play apparatus such as jungle gyms, swings, etc.

The fourth and last area separated from the other play areas by a six foot picket fence is for older people. It will have bocce and handball courts. The bocce courts will be leveled and rolled and have planted borders. The handball courts will be concrete paved and have a sixteen foot brick backstop with a four foot wire stop on top. This wall also serves as the Fifth Avenue boundary of the playground. The entrance to the last area will be on Third Street near Fifth Avenue.

Suitable arrangements will be made for the comfort of parents and observers watching the game.

DEPARTMENT OF PARKS
Arsenal, Central Park
Tel. Regent 4-1000

FOR RELEASE
August 10, 1934

Release #100

Fourteen additional playgrounds will be opened by the Department of Parks in New York City on Saturday morning, August 11th.

✓ Mayor Fiorello H. La Guardia will deliver the opening address at 11 a.m. at the model playground, located on West 17th Street between Eighth and Ninth Avenues, New York. He will be introduced by the Hon. Robert Moses, Commissioner of Parks.

Following the address of Mayor La Guardia, there will be a call to the colors and the American Flag will be raised simultaneously at all of these playgrounds with the exception of the model playground located at 3rd and 4th Streets at Fourth Avenue, Brooklyn, where separate exercises will be held at noon.

✓ Borough President Raymond V. Ingersoll will speak at the opening exercises at the Model (Gowanus) Playground in Brooklyn, and Mayor La Guardia will open the playground.

✓ At the conclusion of the exercises at the Gowanus Playground in Brooklyn, the official party, headed by Mayor La Guardia, will proceed to the Model Playground in Queens, at 25th and 30th Avenues and 84th and 85th Streets, to inspect its facilities.

(Continued)

At the Corlears Hook Playground, at Corlears and Water Streets in Manhattan, handball games and horseshoe-pitching contests will take place after the opening ceremonies, while the playground located on the site of the Ridgewood South Side Pumping Station, at Sunrise Highway and Atlantic Avenue, Brooklyn, will feature a baseball game between two good teams.

This is the second group of new playgrounds to be opened by the Park Department this year. Nine playgrounds which were acquired and developed with the War Memorial Fund turned over to the Department of Parks for this purpose, were dedicated and opened by Mayor La Guardia on July 15th.

The fourteen playgrounds to be opened on Saturday (August 11th) are as follows:

MANHATTAN:

- ✓ MODEL PLAYGROUND, West 17th Street between Eighth and Ninth Avenues.
- ✓ PLAYGROUND at 83 Roosevelt Street.
- ✓ PLAYGROUND at 99 Thompson Street.
- ✓ INWOOD HILL PLAYGROUND, Payson and Dyckman Streets.
- ✓ ST. NICHOLAS PLAYGROUND, at St. Nicholas Avenue and West 141st Street.
- ✓ CENTRAL PARK, LOWER RESERVOIR SITE, northwest corner.
- ✓ CORLEARS HOOK PLAYGROUND, Corlears and Water Streets.
- ✓ PLAYGROUND at Rivington and Lewis Streets.

BROOKLYN:

- ✓ MODEL PLAYGROUND at 3rd and 4th Streets at Fourth Avenue (Govanus House).
- ✓ RIDGEWOOD SOUTH SIDE PUMPING STATION SITE, Sunrise Highway and Atlantic Avenue.
- ✓ PLAYGROUND at 95th Street between Avenues K and L.

Page 3.

BRONX:

✓ PLAYGROUND at 141st Street between Brook and St. Ann's Avenues.

QUEENS:

✗ MODEL PLAYGROUND at 25th and 30th Avenues and 84th and 85th Streets, Jackson Heights.

RICHMOND:

MODEL PLAYGROUND at Jewett and Castleton Avenues.

With the exception of the site of the Ridgewood South Side Pumping Station, and the Corlears Hook Playground, each playground will have a recreation building including playroom, lavatories, and a modern heating system; a 40 foot flagpole, adequate plantings of shade trees and shrubbery, a chlorinated foot bath through which children must pass before entering the wading pool; equipment for younger children, consisting of swings, slides, see-saws and jungle gyms and handball and basketball courts for older children. The playgrounds will be equipped with adequate drinking fountains of the type required by the Federal Government for army camps.

Mayor La Guardia's address and the exercises at the model playground at West 17th Street, Manhattan, will be broadcast to all of the other playgrounds opening on Saturday, by Stations WNYC, WNEW and WOV.

-End-

DEPARTMENT OF PARKS
Arsenal, Central Park
Tel. Regent 4-1000

August 3, 1934

99

NOTICE

TO THE CITY EDITOR:

The Park Department has arranged an inspection trip covering the Long Island Parkways and Parks for representatives of the press on Monday (August 6th) starting from the Arsenal, Central Park, at 10 A.M. sharp.

Luncheon will be served at Jacob Riis Park, and dinner at Jones Beach.

-End-

ITINERARY FOR INSPECTION TOUR
Monday, August 8, 1934

DEPARTMENT OF PARKS

Arsenal Building - Central Park

		<u>ARRIVE</u>	<u>LEAVE</u>
<u>Arsenal Building, 5th Ave. & 64th St. Manhattan</u>			10 A.M.
South on Fifth Avenue			
East on 61st Street			
Cross 59th Street Bridge			
East on Queens Boulevard			
South on Woodhaven Boulevard			
West on Sunrise Highway to			
Linden Boulevard. Turn here	5 Minute Stop	10:45	10:50
East on Sunrise Highway			
North on Brookville Boulevard			
Along Laurelton Parkway	10 Minute Stop	11:10	11:20
North on Elmont Road			
To Southern State Parkway	15 Minute Stop	11:25	11:40
South on Elmont Road			
South on Brookville Parkway			
West on Sunrise Highway			
South on Woodhaven and Cross Bay Blvd.			
West on Beach Channel Drive and Cranston Ave.			
South on Beach 148th Street			
West on Washington Avenue to			
<u>JACOB RIIS PARK</u> for Inspection	30 Minute Stop	12:15	12:45
and Lunch	60 Minute Stop	12:45	1:45
East on Washington Avenue and Rockaway Beach Blvd.			
North on Beach 118th Street			
East on Beach Channel Drive and Amstel Ave.			
Cross L.I.R.R. tracks			
Continue East on Boulevard Road			
Southeast on Dune Street			
East on Seagirt Avenue			
South across Atlantic (Toll) Bridge			
East on Atlantic Blvd. through Long Beach to			
Bridge head at Hempstead Town Park			
Embark in L.I.S.P.C. Boat		2:20	
For inspection trip of Meadowbrook Parkway Development			
Automobiles will proceed to Jones Beach and pick up party at			
Fishing Dock, north of Bath House #2 at		3:00	
Thence to Jones Beach Bath House #2			
Swim, Supper and Pool Show			
Return to New York City by automobile.			

C O P Y

DEPARTMENT OF PARKS
Arsenal, Central Park
Tel. Regent 4-1000

987
FOR IMMEDIATE RELEASE
August 3, 1934

CONTROLLING THE DUTCH ELM DISEASE

The Park Department, cooperating with Federal and State agencies, is removing a number of elm trees throughout the city in combating the Dutch Elm disease. A few of them are large trees which, to the casual observer, are healthy specimens which should be allowed to stand. Laboratory tests by the U. S. Department of Agriculture, however, show positive evidence of their being diseased, and they must be sacrificed to save the elms which are still healthy.

According to present information, the Dutch Elm disease is confined to an area centering in New York City, and having a radius of thirty-five miles. Diseased trees have been found on Long Island as far east as Hempstead and Westbury. In Westchester, the epidemic is most severe at the southern end of the county but thins out at the present known northerly limits near Chappaqua. Connecticut reports isolated cases as far east as Stamford.

To date, nearly 1,000 diseased elms have been found in New York State, probably four times as many in New Jersey and 21 in southwestern Connecticut. Of those in New York State, 375 were in the five boroughs of New York City, and 175 of these elms were on city property, with Staten Island most seriously affected.

This epidemic can be eliminated only by prompt action. The Dutch Elm disease is a fungus that works beneath the bark in the growing tissues of the tree where it cannot be reached by spraying, while bark engraver beetles working similarly, are the main carriers of the disease to healthy trees. There is no known cure. With the rarest exceptions, a tree, once infected, will die within two or three years at most, and during every day of the growing season that such a tree is allowed to stand, it is a source of possible infection of all healthy trees in the vicinity.

The only way to save our elms, therefore, is to cut down and burn every single diseased tree in the country - a task of real magnitude, but not impossible. If one diseased tree is overlooked, it can void all other eradication efforts. For this reason, the state laws require the removal of every diseased tree as soon as it is found.

From a practical standpoint, control must be thorough and complete at this time. A tree infected with Dutch Elm disease will surely die, and the expense of removing it must be met either now or later. If the diseased tree is allowed to stand, it will infect other trees and there will be the additional expense of removing them as well. Eventually, if there is no control, we must look forward to the probability of removing practically all of our Elm trees in this vicinity, if not in the whole country. A very small part of this potential expense, if used now for control work, will not only avoid such a tremendous outlay but will save one of our most important shade trees.

Fighting the Dutch Elm disease is like fighting a fire. Prompt action and thoroughness will hold the damage and expense to a minimum.

-End-

DEPARTMENT OF PARKS
Arsenal, Central Park
Regent 4-1000.

98
FOR IMMEDIATE RELEASE
August 3, 1934

So many requests have been received by Jacob Riis Park at Neponsit for children's treasure hunts that the park has scheduled another of these events for next Saturday afternoon August 4th at 2 P.M.

Prizes will be awarded to winners and seven cues will lead them to the prizes. The last treasure hunt drew several hundred children. Other events at Jacob Riis Park Saturday include lifeboat surfboard and swimming rescue races.

-end-

DEPARTMENT OF PARKS
Arsenal, Central Park
Tel. Regent 4-1000

last copy *New Release*
FOR IMMEDIATE RELEASE
August 3, 1934

97

CONTROLLING THE DUTCH ELM DISEASE

The Park Department, cooperating with Federal and State agencies, is removing a number of elm trees throughout the city in combating the Dutch Elm disease. A few of them are large trees which, to the casual observer, are healthy specimens which should be allowed to stand. Laboratory tests by the U. S. Department of Agriculture, however, show positive evidence of their being diseased, and they must be sacrificed to save the elms which are still healthy.

According to present information, the Dutch Elm disease is confined to an area centering in New York City, and having a radius of thirty-five miles. Diseased trees have been found on Long Island as far east as Hempstead and Westbury. In Westchester, the epidemic is most severe at the southern end of the county but thins out at the present known northerly limits near Chappaqua. Connecticut reports isolated cases as far east as Stamford.

To date, nearly 1,000 diseased elms have been found in New York State, probably four times as many in New Jersey and 21 in southwestern Connecticut. Of those in New York State, 375 were in the five boroughs of New York City, and 175 of these elms were on city property, with Staten Island most seriously affected.

This epidemic can be eliminated only by prompt action. The Dutch Elm disease is a fungus that works beneath the bark in the growing tissues of the tree where it cannot be reached by spraying, while bark engraver beetles working similarly, are the main carriers of the disease to healthy trees. There is no known cure. With the rarest exceptions, a tree, once infected, will die within two or three years at most, and during every day of the growing season that such a tree is allowed to stand, it is a source of possible infection of all healthy trees in the vicinity.

The only way to save our elms, therefore, is to cut down and burn every single diseased tree in the country - a task of real magnitude, but not impossible. If one diseased tree is overlooked, it can void all other eradication efforts. For this reason, the state laws require the removal of every diseased tree as soon as it is found.

(Continued)

From a practical standpoint, control must be thorough and complete at this time. A tree infected with Dutch Elm disease will surely die, and the expense of removing it must be met either now or later. If the diseased tree is allowed to stand, it will infect other trees and there will be the additional expense of removing them as well. Eventually, if there is no control, we must look forward to the probability of removing practically all of our Elm trees in this vicinity, if not in the whole country. A very small part of this potential expense, if used now for control work, will not only avoid such a tremendous outlay but will save one of our most important shade trees.

Fighting the Dutch Elm disease is like fighting a fire. Prompt action and thoroughness will hold the damage and expense to a minimum.

-End-

C O P Y

DEPARTMENT OF PARKS
Arsenal, Central Park
Tel. Regent 4-1000

97
FOR IMMEDIATE RELEASE
August 3, 1934

CONTROLLING THE DUTCH ELM DISEASE

The Park Department, cooperating with Federal and State agencies, is removing a number of elm trees throughout the city in combating the Dutch Elm disease. A few of them are large trees which, to the casual observer, are healthy specimens which should be allowed to stand. Laboratory tests by the U. S. Department of Agriculture, however, show positive evidence of their being diseased, and they must be sacrificed to save the elms which are still healthy.

According to present information, the Dutch Elm disease is confined to an area centering in New York City, and having a radius of thirty-five miles. Diseased trees have been found on Long Island as far east as Hempstead and Westbury. In Westchester, the epidemic is most severe at the southern end of the county but thins out at the present known northerly limits near Chappaqua. Connecticut reports isolated cases as far east as Stamford.

To date, nearly 1,000 diseased elms have been found in New York State, probably four times as many in New Jersey and 21 in southwestern Connecticut. Of those in New York State, 375 were in the five boroughs of New York City, and 175 of these elms were on city property, with Staten Island most seriously affected.

This epidemic can be eliminated only by prompt action. The Dutch Elm disease is a fungus that works beneath the bark in the growing tissues of the tree where it cannot be reached by spraying, while bark engraver beetles working similarly, are the main carriers of the disease to healthy trees. There is no known cure. With the rarest exceptions, a tree, once infected, will die within two or three years at most, and during every day of the growing season that such a tree is allowed to stand, it is a source of possible infection of all healthy trees in the vicinity.

The only way to save our elms, therefore, is to cut down and burn every single diseased tree in the country - a task of real magnitude, but not impossible. If one diseased tree is overlooked, it can void all other eradication efforts. For this reason, the state laws require the removal of every diseased tree as soon as it is found.

From a practical standpoint, control must be thorough and complete at this time. A tree infected with Dutch Elm disease will surely die, and the expense of removing it must be met either now or later. If the diseased tree is allowed to stand, it will infect other trees and there will be the additional expense of removing them as well. Eventually, if there is no control, we must look forward to the probability of removing practically all of our Elm trees in this vicinity, if not in the whole country. A very small part of this potential expense, if used now for control work, will not only avoid such a tremendous outlay but will save one of our most important shade trees.

Fighting the Dutch Elm disease is like fighting a fire. Prompt action and thoroughness will hold the damage and expense to a minimum.

-End-

Pub. Release
95

The finals of the first Inter-borough Checker Tournament conducted by the Recreation Division of the Department of Parks will be held at the Heckscher Playground, Central Park, on Thursday, August 2nd, at 2 p.m.

The following contestants who were successful in the borough finals for the boys and for the girls will participate in the finals:

MANHATTAN: John Covas, 45 West 93d St., 14 years, Lionel Sutro Playground.
Floreeeta Grahm, 2807-8th Ave., 13 years, Colonial Playground.

BRONX: Benjamin Mellman, 859 Hunts Point Road, 15 years, Lyons Park.
Sylvia Brownstein, 1701 Fulton Ave., 12 years, Crotona Park.

BROOKLYN: William Cole, 539-46th St., 11 years, Sunset Park.
Sophia Cohn, 2063-74th St., 13 years, Bay Parkway.

QUEENS: Edmund McKenna, 2944-161st St., Flushing, 15 years, Bowne Park.
Christina Wiskerman, 9-16 - 127th St., College Point, 11 years, Waterfront.

RICHMOND: Nickolas Lorgieci, 202 Walker St., Port Richmond, Faber Park.
Helen Barn, 224 Treadwell Ave., Port Richmond, Faber Park.

The Park Department Checker Contest was open to all boys and girls, not over sixteen years of age.

Although Checkers has been a popular pastime in the playgrounds, this is the first City Checker Tournament conducted by the Department of Parks. Interest in the game is increasing and Playground Directors are called upon with increasing frequency to decide the fine points of the game. The children no longer are content to play an unscientific game. They are beginning to absorb some of the fundamental strategy of checkers.

Gold-filled, silver and bronze medals of the Park Department having a checker board panel on them, have been awarded to the borough winners. The City Seal medal will be given to those finishing first, second and third in the finals to be held Thursday, August 2nd.

#94

WEST SIDE IMPROVEMENT

Bids were taken today on the first section of City Structure No. 4 for the Express Highway north of 72nd Street, in Riverside Park, in accordance with the revised plans of the Park Department.

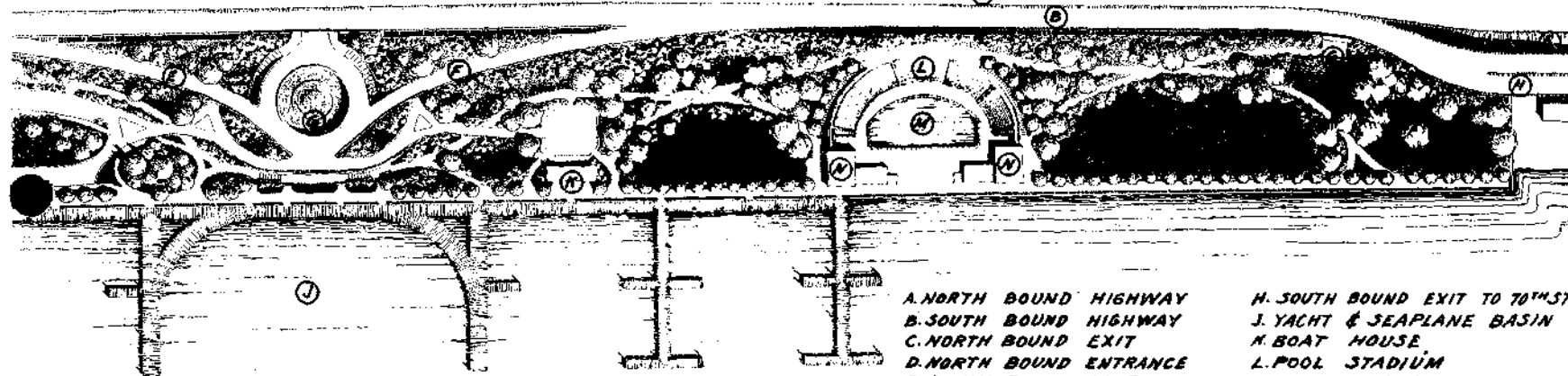
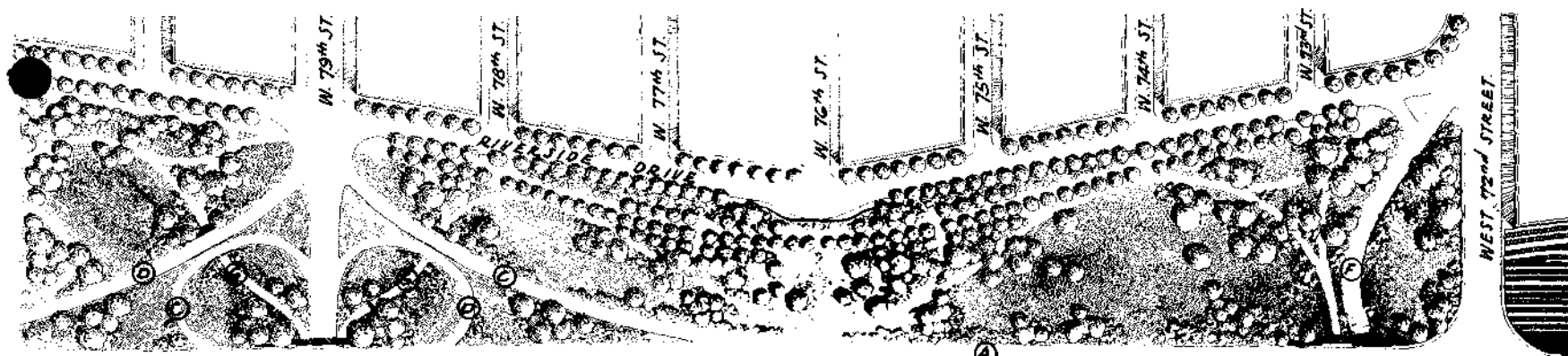
This work consists of the westerly wall and foundations for City Structure No. 4. The contract will be awarded to the low bidder as soon as the bids are examined and checked by the Commissioner of Parks, in accordance with the authority vested in him yesterday at a meeting of the Board of Estimate and Apportionment. This is among the first of a number of contracts that will be let for the construction of the West Side Improvement.

The New York Central Railroad will take bids the latter part of August for the excavation of a cut from 42nd to 53rd Streets through which cut the tracks now on 11th Avenue will later be installed. This material will be placed adjacent to the above construction work in Riverside Park and will later be used in the development of the landscape scheme.

At the southerly limits of the work the ground conditions are such that it was found necessary to install steel pipe piles filled with concrete extending from the bottoms of the walls to solid rock approximately 35 feet below the existing surface of the ground. At the northerly limits of the contract test pits indicated that the walls could be carried on the existing ground without resorting to the use of piles.

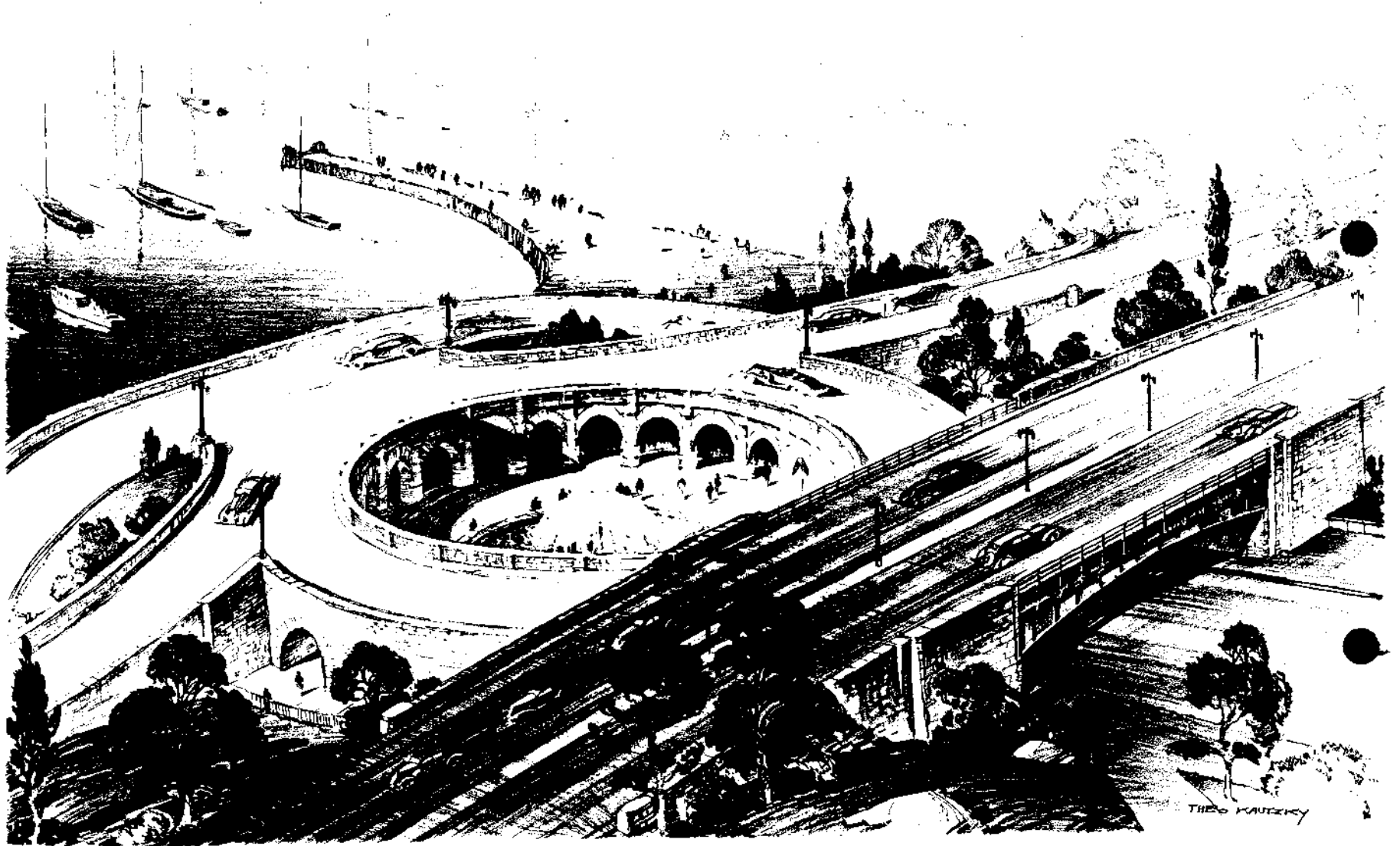
At the southerly extremity rubble masonry transverse walls have been specified, while at the northerly end stone concrete walls are to be used. The tops of all of the walls are in the form of steps on which will be placed the reinforced concrete earth supporting members. This scheme of supporting a superimposed load of earth is somewhat novel and was resorted to because of unusual existing foundation conditions.

After the work on the present contract has progressed, it will be possible to proceed with the landscaping work with relief labor.



A. NORTH BOUND HIGHWAY
 B. SOUTH BOUND HIGHWAY
 C. NORTH BOUND EXIT
 D. NORTH BOUND ENTRANCE
 E. SOUTH BOUND EXIT
 F. SOUTH BOUND ENTRANCE
 G. PEDESTRIAN UNDERPASS

H. SOUTH BOUND EXIT TO 70th ST.
 J. YACHT & SEAPLANE BASIN
 K. BOAT HOUSE
 L. POOL STADIUM
 M. SWIMMING POOL
 N. BATH HOUSE



For description see reverse side

WEST SIDE IMPROVEMENT
DEPARTMENT OF PARKS

Bird's-eye view of the Express Highway crossing over 79th Street. The traffic circle just beyond the grade crossing elimination, affords access to and from the Express Highway, as well as the park development next to the river. Pedestrians reach this park area by means of the sunken circular plaza, which eliminates crossing traffic.

CAMERAGRAPH
by
Palmer Shannon
New York