



Hickman Playground

Located at Veterans Avenue
between East 66th Street and East 68th Street
Borough of Brooklyn

Community Board 18 Presentation

March 18, 2024

Jacob Glazer, PLA

Total Budget: \$3.5M

Mayor, Eric Adams - \$1.75m FY2024

City Council District 46, Mercedes Narcisse - \$1.75m FY2024

Project Size: 0.52 ac.

Parks

Goals

- Increase play value with updated play equipment and spray area.
- Provide additional shade and plantings.
- Increase security by lowering fences and providing security lighting.
- Program active and passive spaces to serve all park users.
- Upgrade amenities and site furnishings

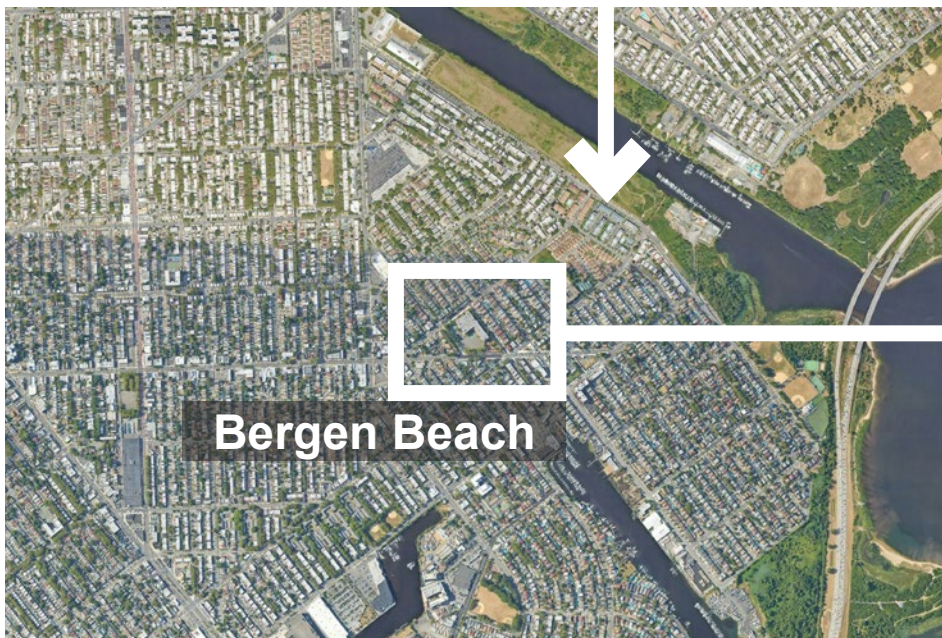




Brooklyn

City

2 MI



Bergen Beach

Neighborhood

1000 FT



Hickman
Playground

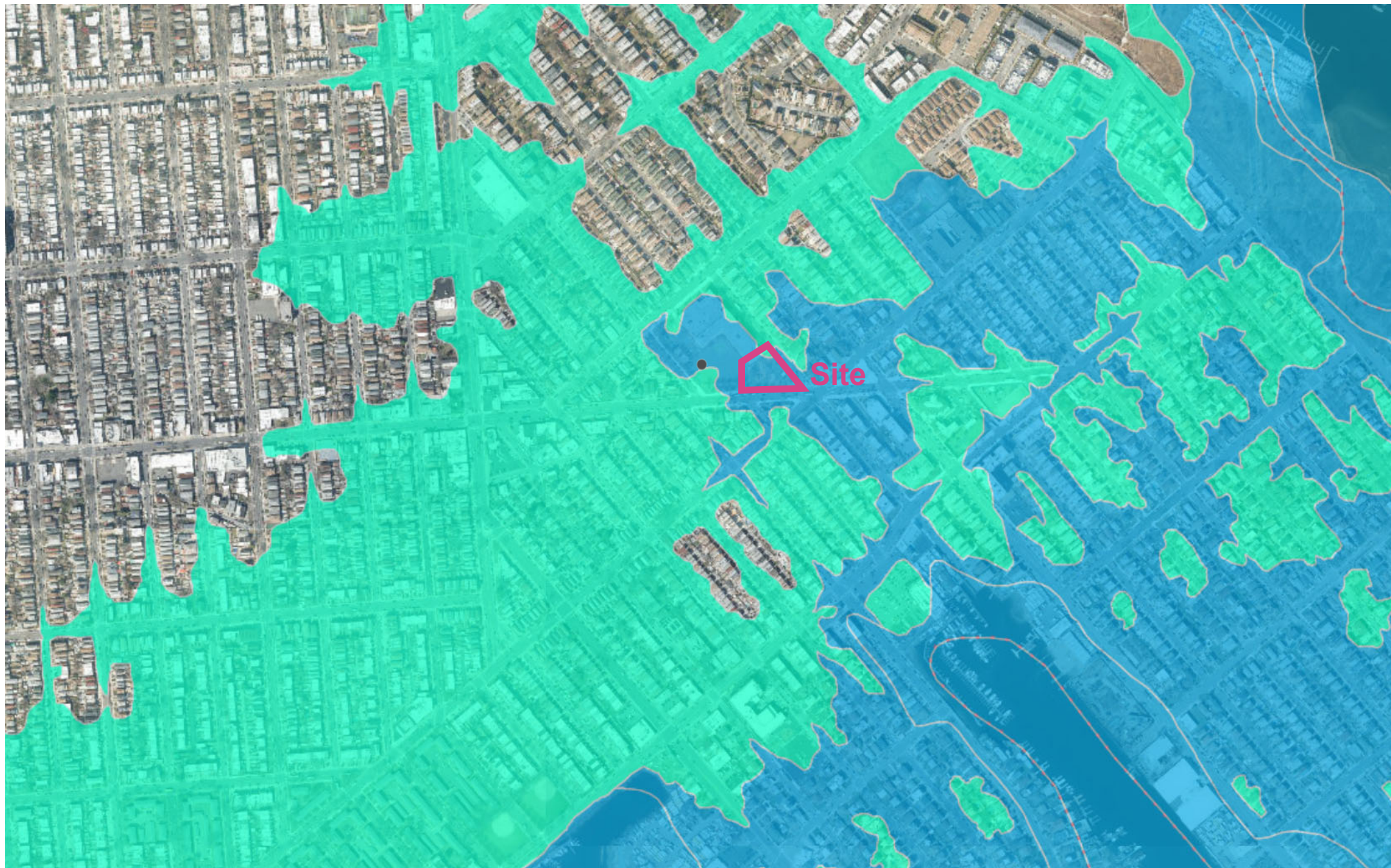
Site

200 FT



NYC Parks

Hickman Playground | Project Location



Base Flood Elevation (BFE): 10

Flood Hazard Zones

2015 Preliminary Flood Insurance Rate Map

V Zone (100-year floodplain subject to wave action)

Areas along coasts subject to inundation by the 1% annual chance flood event with additional hazards associated with storm-induced waves.

A Zone (100-year floodplain)

Areas subject to inundation by the 1% annual chance flood event.

Shaded X Zone (500-year floodplain)

Areas within the 0.2% annual chance floodplain, areas of 1% annual chance flooding where average depths are less than 1 foot, areas of 1% annual chance flooding where the contributing drainage area is less than 1 square mile, and areas protected from the 1% annual chance flood by a levee.

Limit of Moderate Wave Action (LiMWA)

The inland limit of the area expected to receive 1.5ft or greater breaking waves during the 1% annual chance flood event. Data from 2015 PFIRMs.

Future Floodplain 2050s

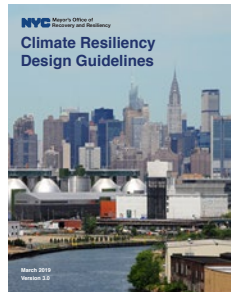
Future 1% Annual Chance Floodplain (100-year)

Future 0.2% Annual Chance Floodplain (500-year)

Resources (Links):



NYC Parks: Design and Planning for Flood Resiliency



NYC MOCR: Climate Resiliency Design Guidelines (v4.0)

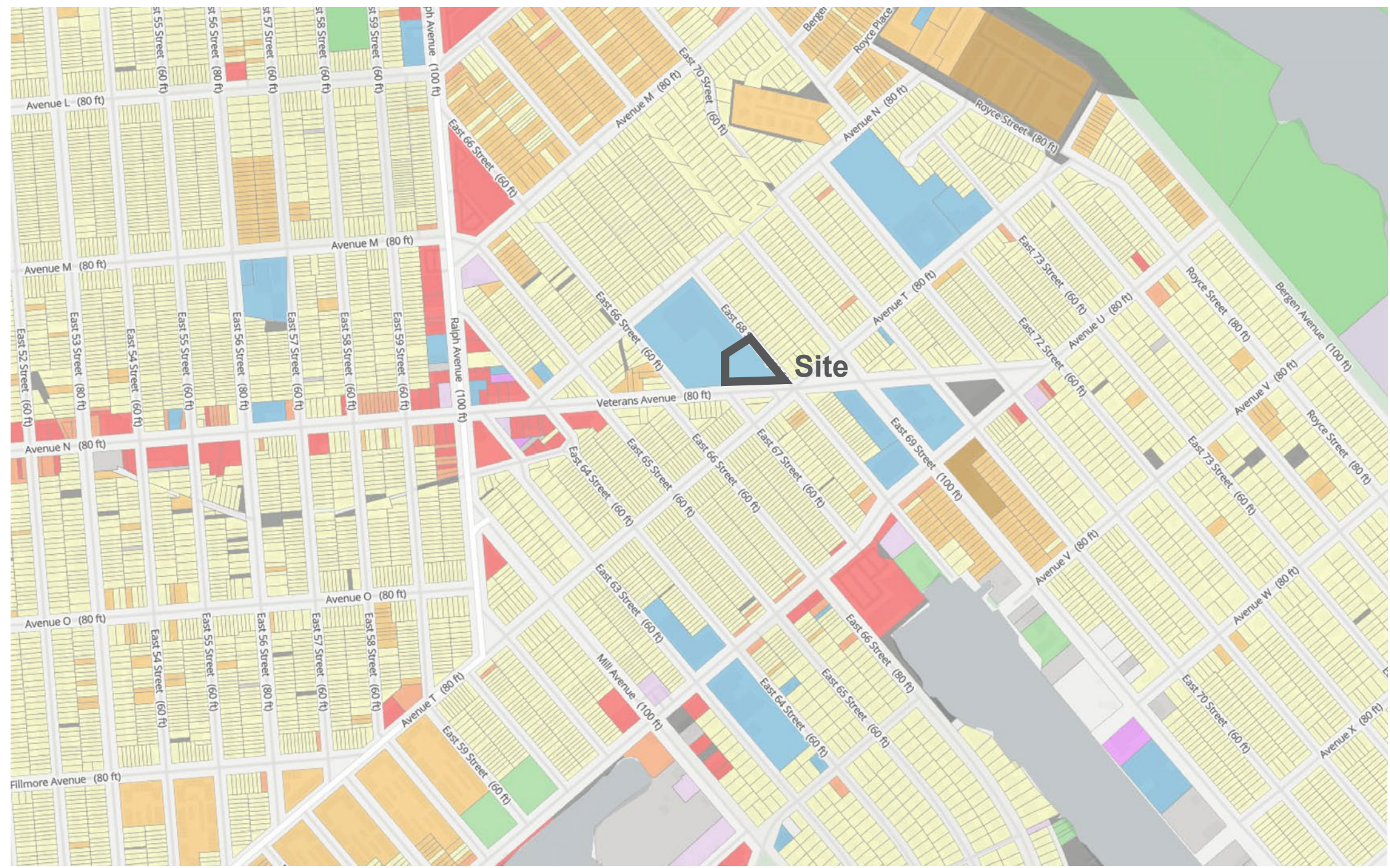


NYC Parks



Land Use Categories

- 1 And 2 Family Residential
- Multi-Family Residential (Walkup)
- Multi-Family Residential (Elevator)
- Mixed Use
- Commercial & Office
- Industrial & Manufacturing
- Transportation / Utilities
- Public Facilities & Institutional
- Open Space And Outdoor Recreation
- Parking
- Vacant Land
- Other



Hickman Playground | Surrounding Land Use

Jacob Joffe Fields

- Basketball (4)
- Baseball (2)
- Football (1)
- Handball (2)
- Play Equipment

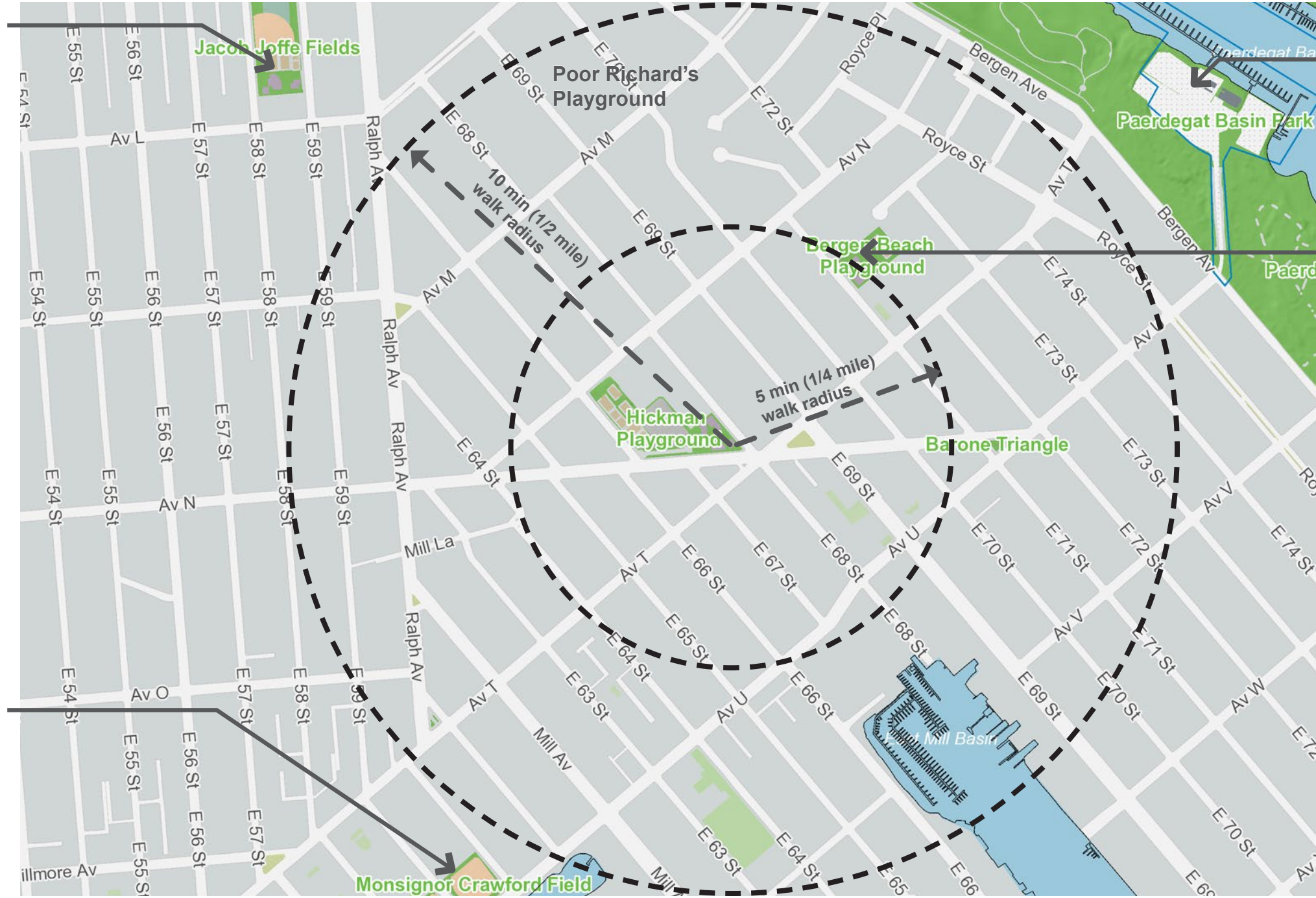
Power Playground

- Basketball (1)
- Bocce (1)
- Handball (4)
- Play Equipment



Monsignor Crawford Field

- Softball (2)



Paerdegat Basin Park

- Hiking Trails
- Kayak/Canoe Launch
- Marinas

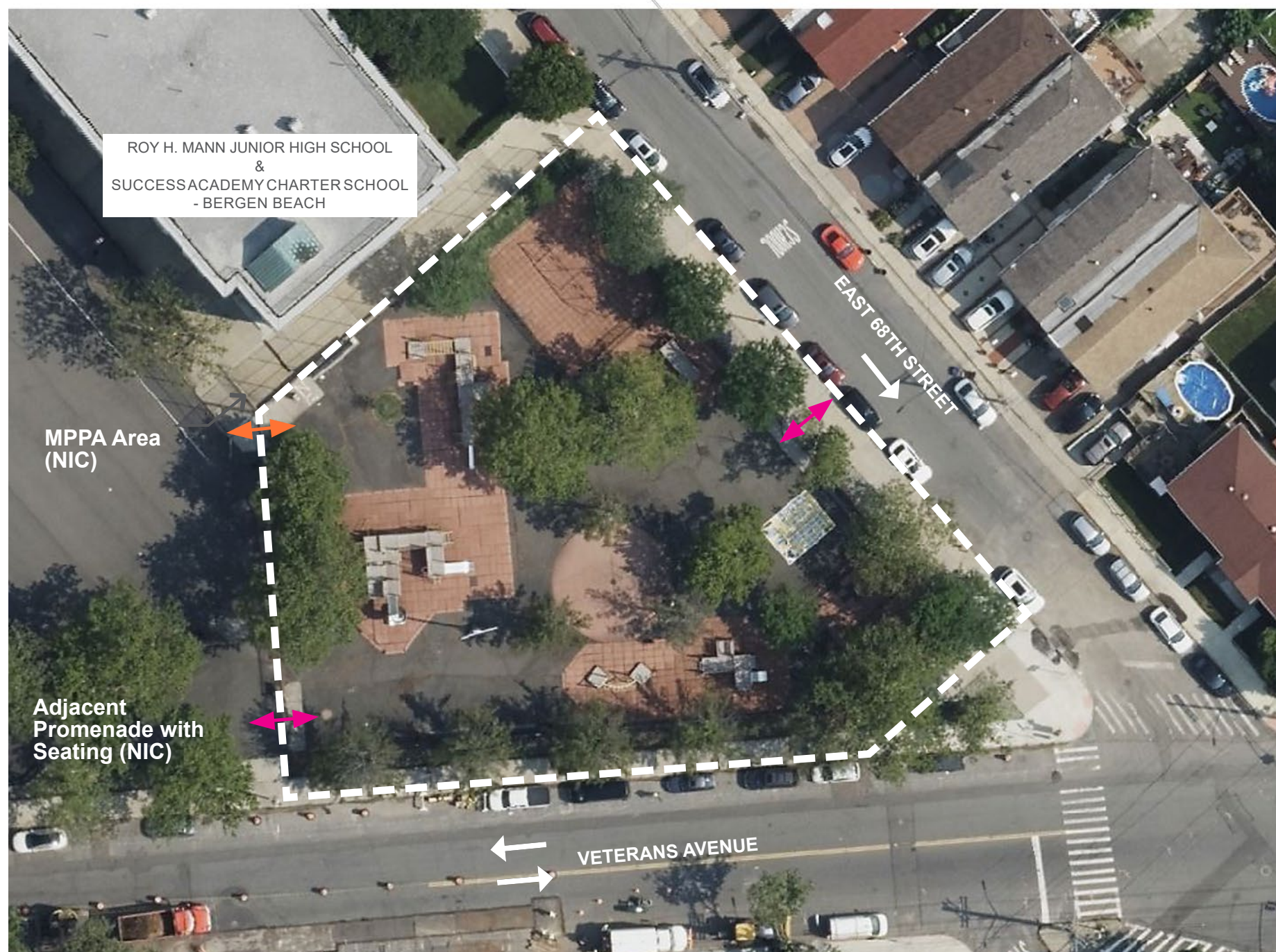
Bergen Beach Playground

- Basketball (3)
- Handball (2)
- Play Equipment
- Spray shower







Hickman Playground | Neighborhood Context





Legend

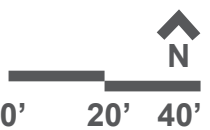
-  Project Limit
-  Park Entrance
-  Park Entrance From School Yard
-  Traffic

Park Tree Canopy Information

32.9% Parkland Canopy Cover
5.7% Canopy Change 2010-2017

Heat Vulnerability Index

Site is in high HVI area.



ROY H. MANN JUNIOR HIGH SCHOOL
&
SUCCESS ACADEMY CHARTER
SCHOOL - BERGEN BEACH

MPPA Area
(NIC)

5-12 Play Equipment

Spray Shower

5-12 Play Equipment

Flag Pole

Benches

Adjacent Promenade
with Seating (NIC)

+LP

VETERANS AVENUE

+HP

5-12 Swings

2-5 Play Equipment

EAST 68TH STREET

Painted Games






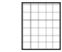




2-5 Play Equipment

2-5 Swings

DOT Property

Crosswalks
with Crossing
Guard

Legend

-  Project Limit
-  Park Entrance
-  Park Entrance From School Yard
-  Play Safety Surface
-  Asphalt Pavement
-  Belgian Block Cobble
-  Tree
-  Floodlight
-  Drinking Fountain
-  Traffic

Park Tree Canopy Information

32.9% Parkland Canopy Cover
5.7% Canopy Change 2010-2017

Heat Vulnerability Index

Site is in high HVI area.



Hickman Playground | Existing Conditions



ROY H. MANN JUNIOR HIGH SCHOOL
&
SUCCESS ACADEMY CHARTER
SCHOOL - BERGEN BEACH

Outdated Play Equipment

Manual Spray Shower
(no activator)

Legend

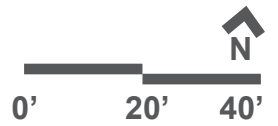
- Project Limit
- Park Entrance
- Park Entrance From School Yard
- Traffic
- Pedestrian 'Shortcut'
- Overly sunny
- Traffic Noise
- Park Entrance

EAST 68TH STREET

VETERANS AVENUE


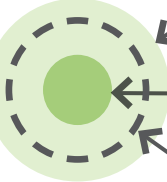







Hickman Playground | Site Analysis





Legend

-  Project Limit
- 
 -  Canopy
 -  Structural Root Zone
 -  Critical Root Zone
-  Tree Removal due to poor condition
-  Tree Removal due to design considerations

Honey Locust with Dieback

Callery Pear in poor condition

Existing Trees to be protected:
 9 London Plane tree
 5 Honey Locust





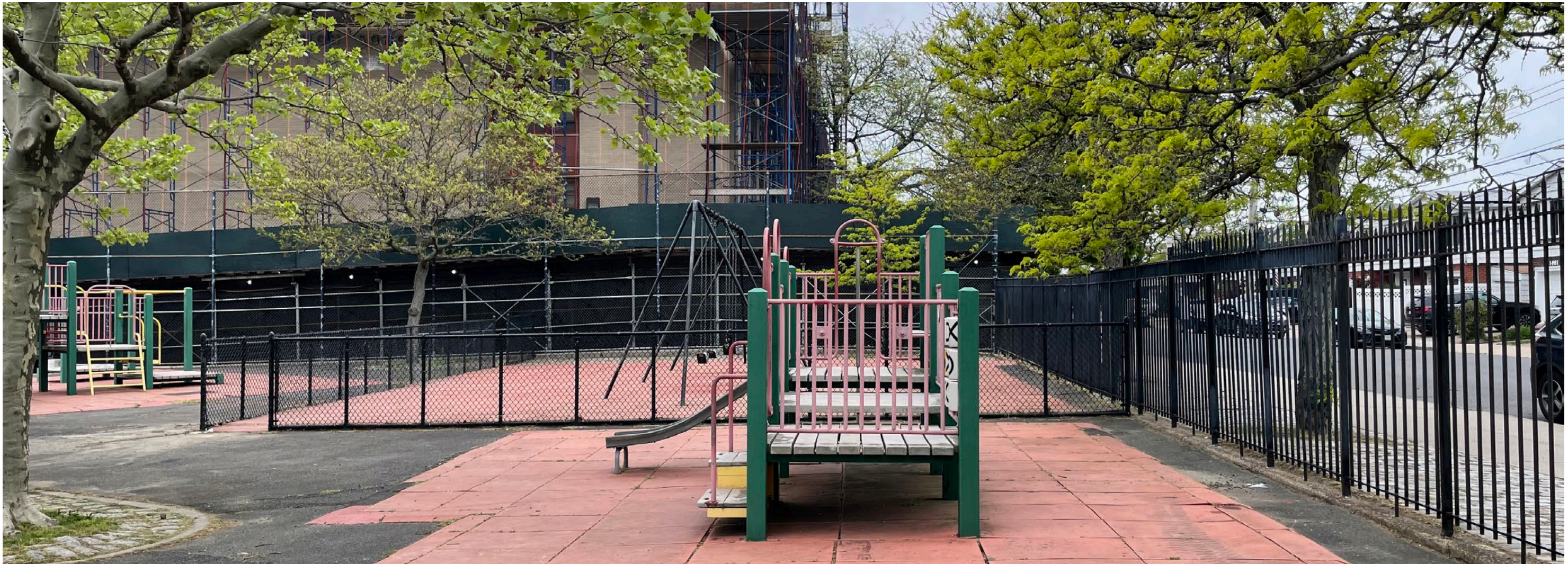
1 - View of Spray Shower in Foreground, 5-12 in Background, and School beyond





1 - View of 2-5 Play Equipment



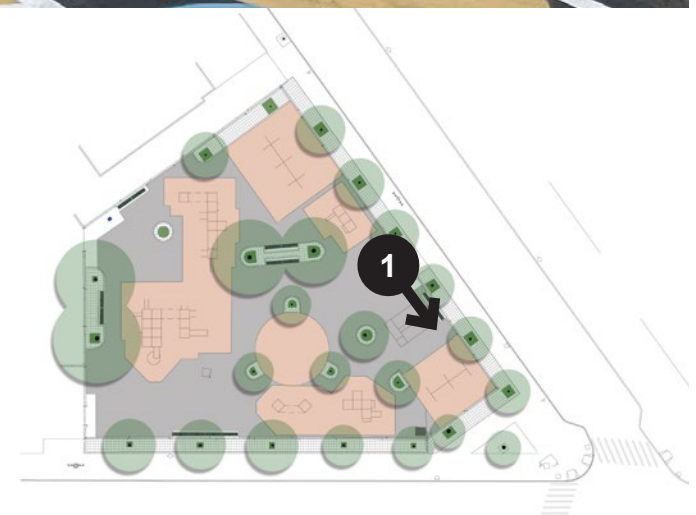


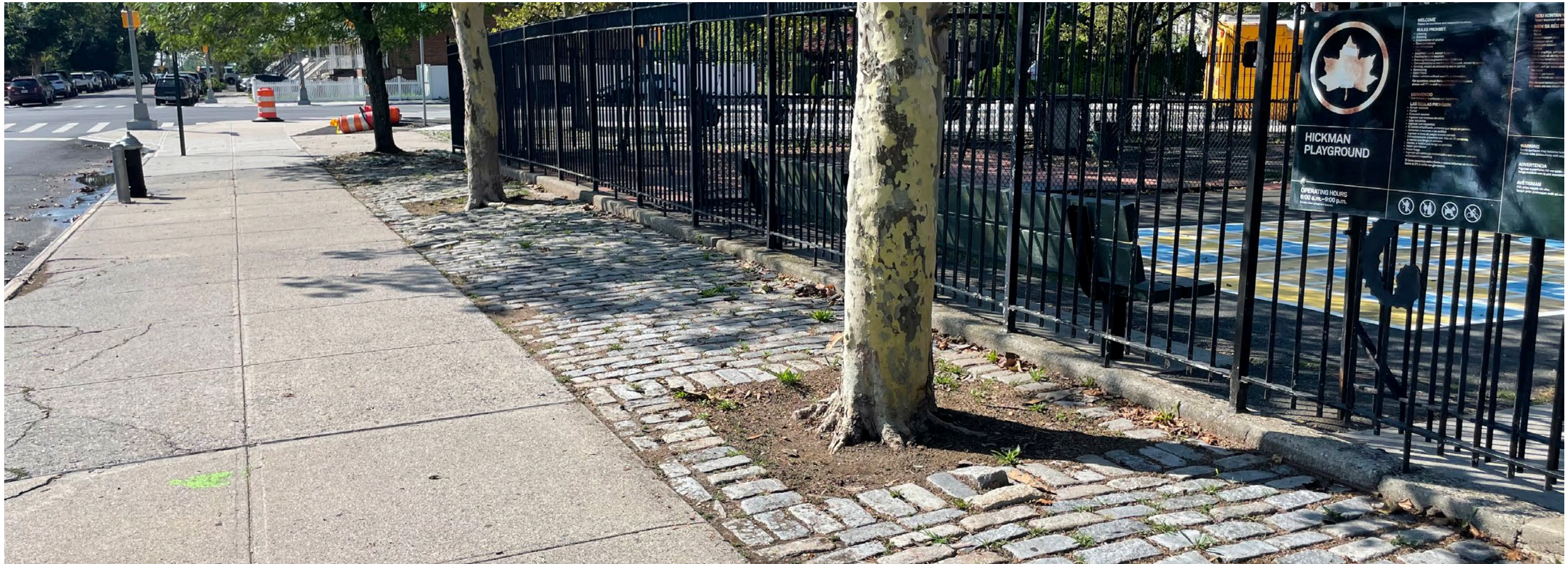
1 - View of 2-5 Play Equipment and 5-12 Swings Beyond





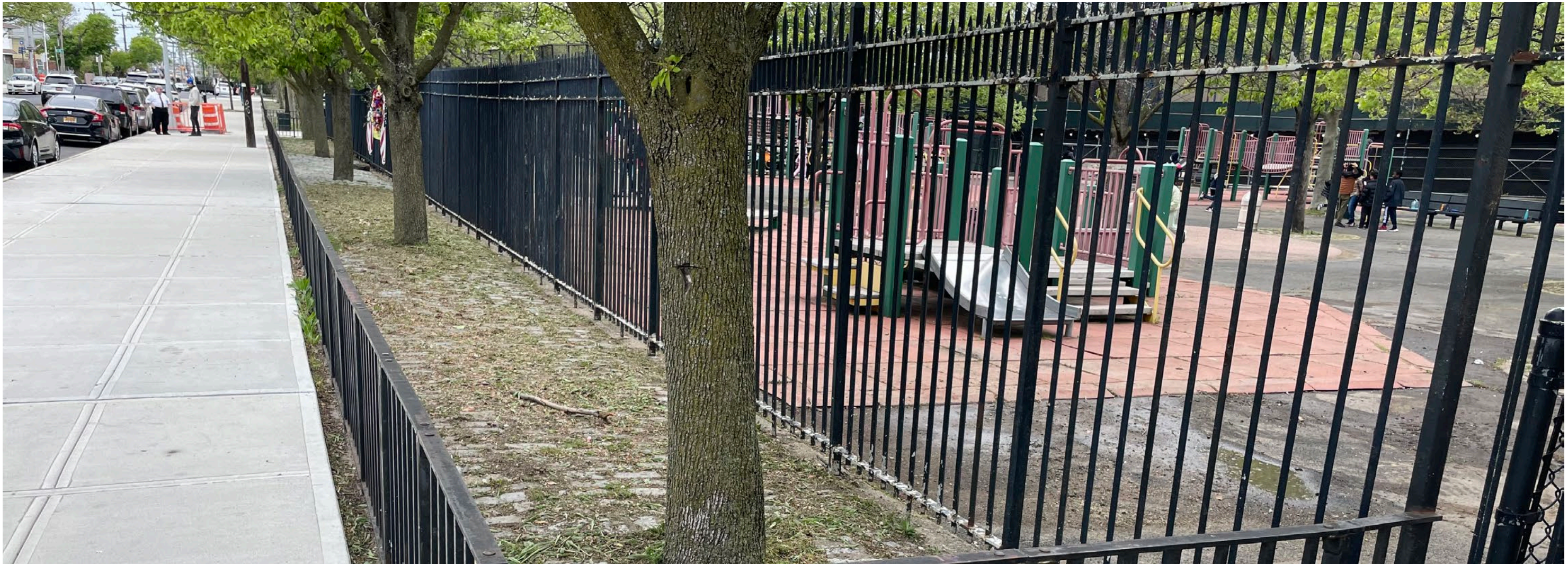
1 - View of Painted Games and 2-5 Swings





1 - View of Sidewalk and Trees in Belgian Block on East 68th Street



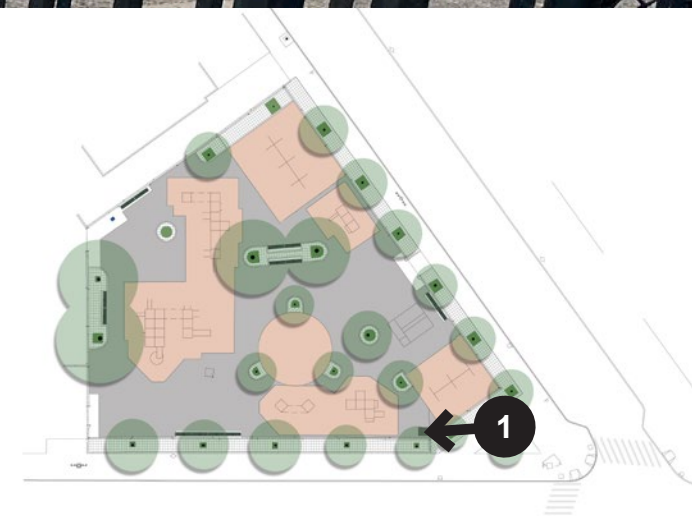


1 - View of Callery Pears in Belgian Block



NYC Parks

Hickman Playground | Site Photo



Community Priorities

Green

trees for shade, more planting

Seating

benches, tables, variety of options

Play

open play area, synthetic turf, accessible play, musical elements, educational play

Water

new and improved spray play

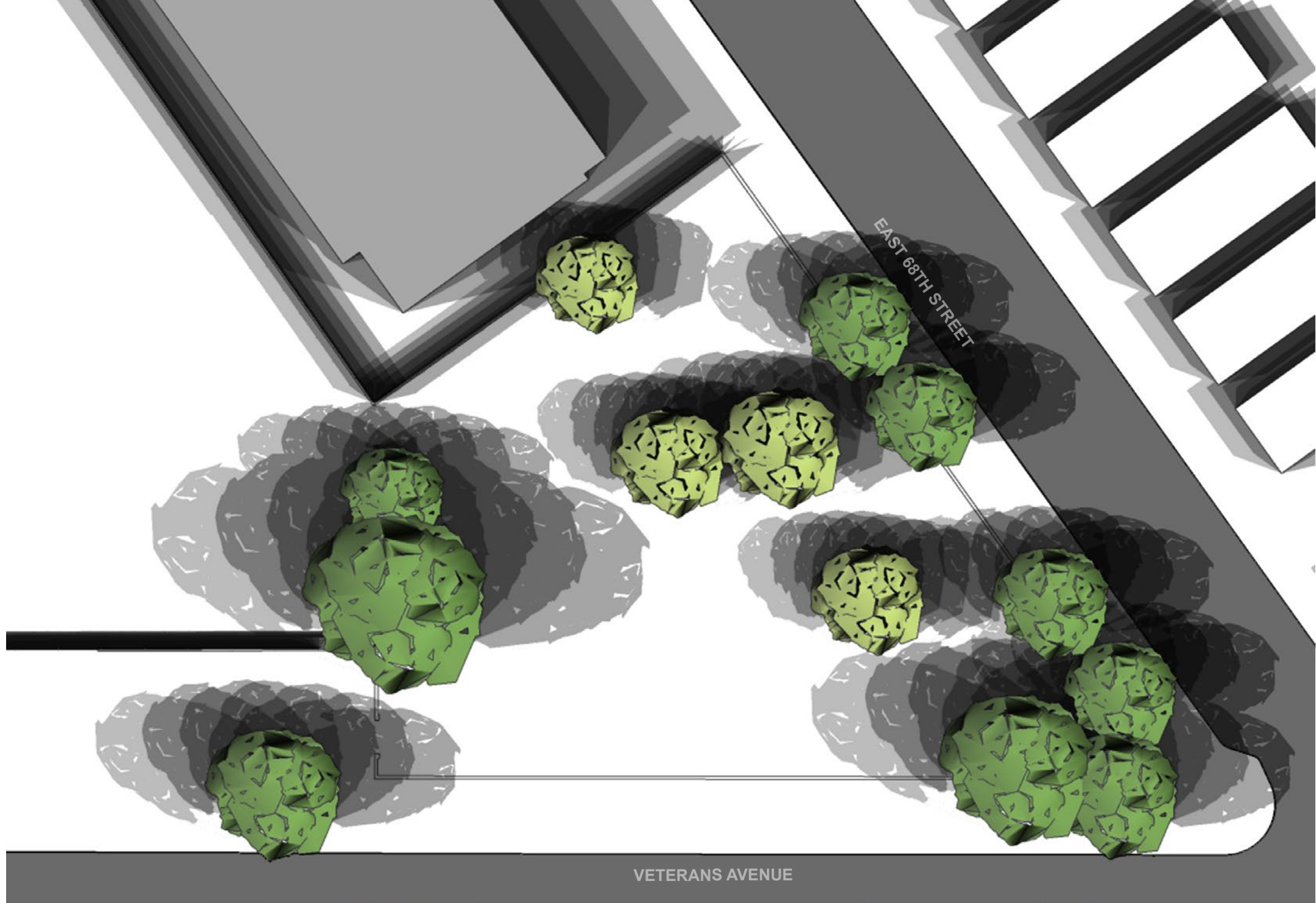
Safety

relocated entrance, better lighting

Heritage

elements in design that connect to Brooklyn











Shade study of August 1, from 9am-3pm



Hickman Playground | Shade Study



Legend

-  Project Limit
-  Park Entrance
-  Park Entrance From School Yard
-  Proposed Canopy Tree
-  Proposed Understory Tree
-  Existing Tree



Hickman Playground | Schematic Design



Posts



Primary Panels



Secondary Panels



Platforms



Cables



KEY PLAN



Posts



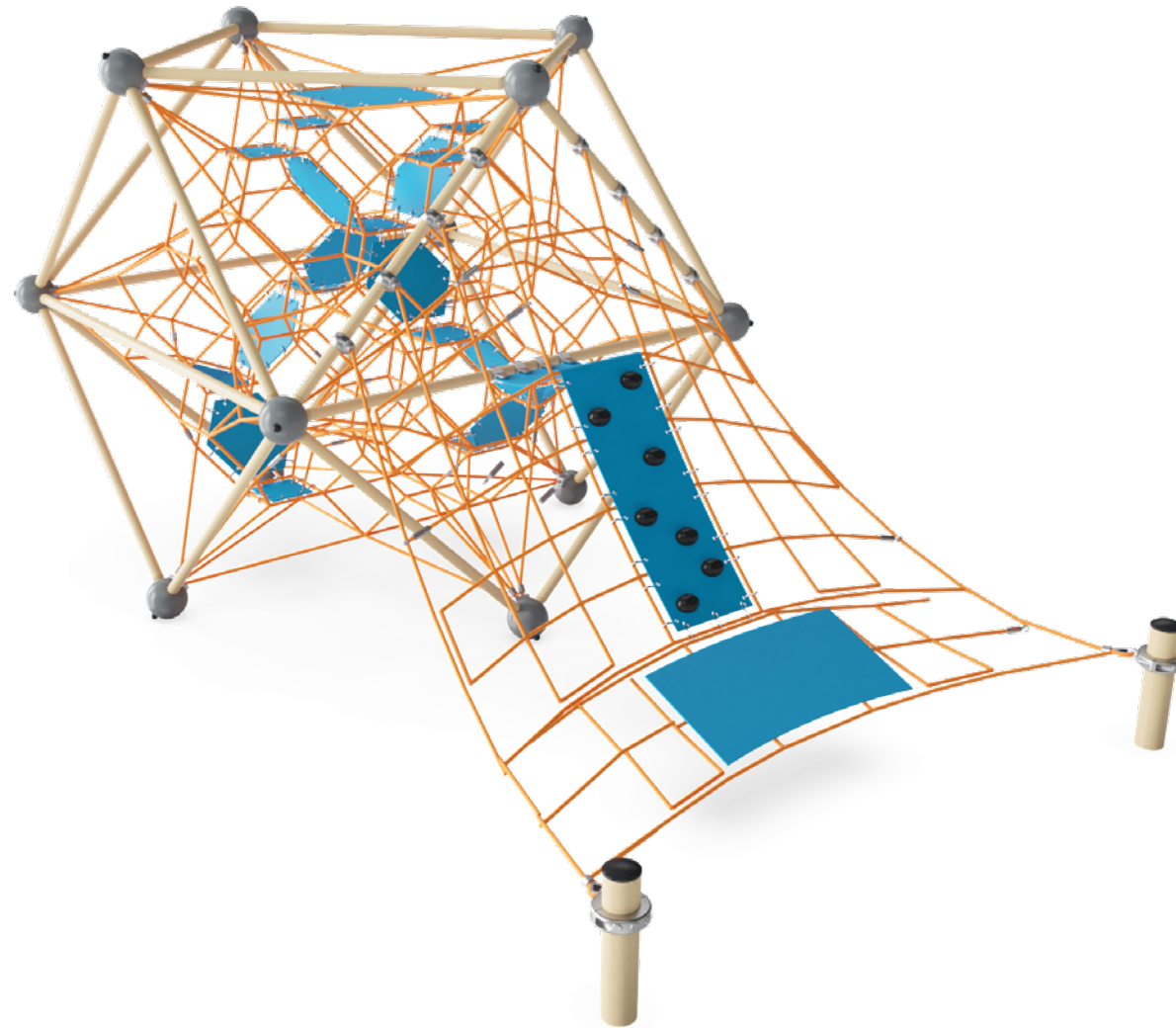
Panels



Accessories



Cables



KEY PLAN



Posts



Panels



Platforms



KEY PLAN



Play Panel at Swings



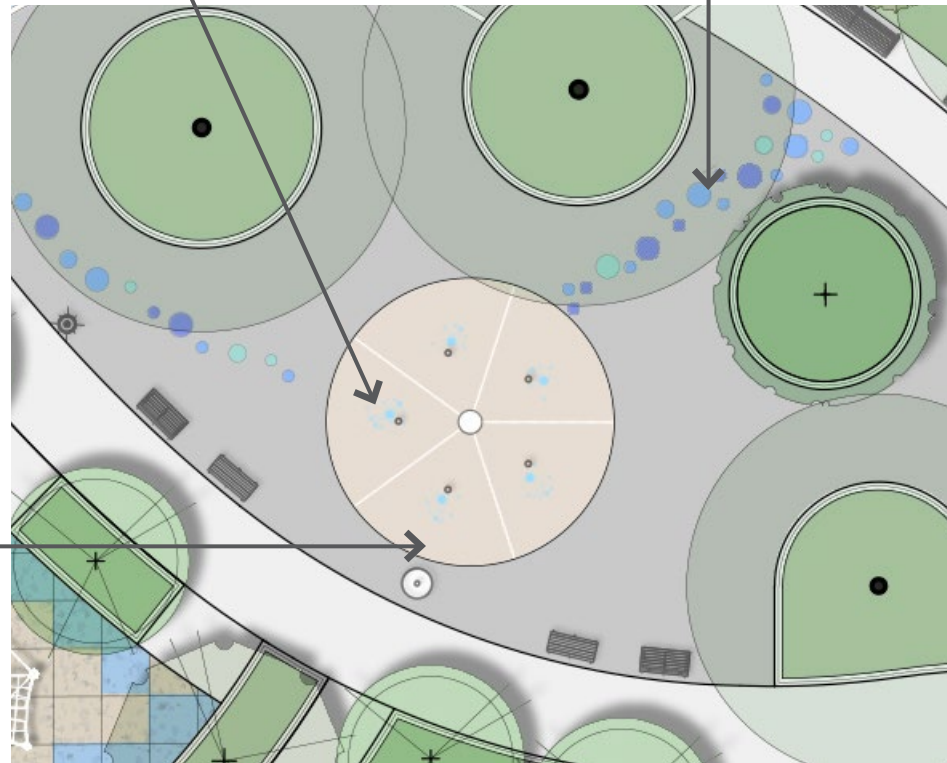


Ground Spray element centered between joints

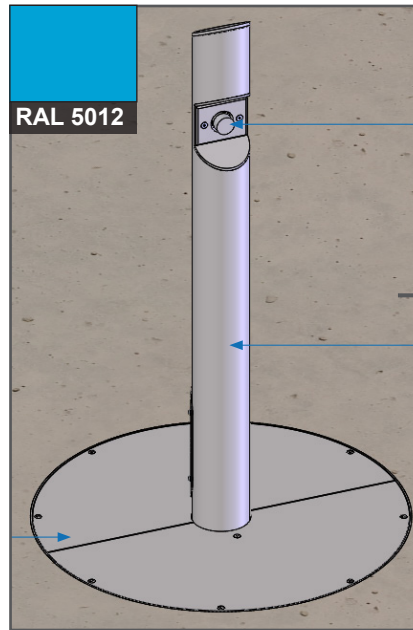
Color Seal Coat Painted Number Stepping Game



KEY PLAN



Ground Spray In Concrete Paving With Standard Parks Drain



Hydraulic Bollard Activator





“Cedar” RPL

1939 World’s Fair Bench, 8FT with back



RAL 5005

Concrete Game Table with Metal Chairs

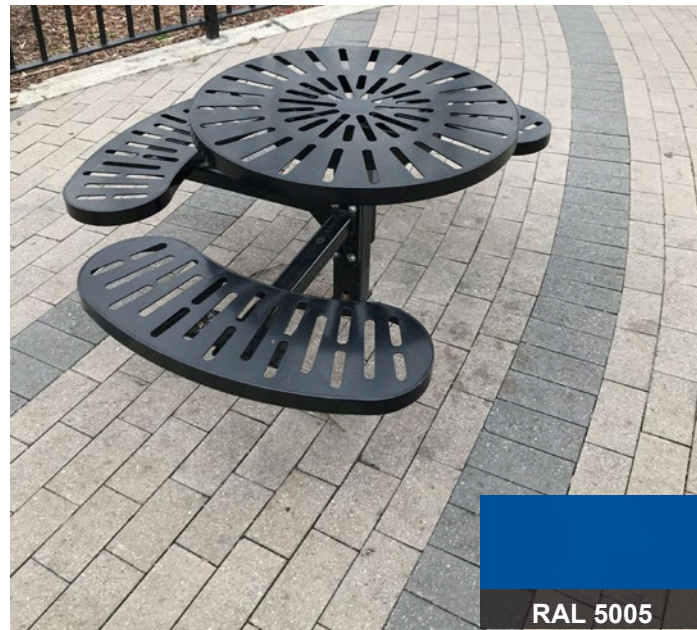


1’-6”, 2-6” & 3’-0” Steel Fence



“Cedar” RPL

1939 World’s Fair Bench, 4FT Backless



RAL 5005

Steel Tot Table, shown with ADA space



4’-0” Steel Fence





B12 Light Pole



Trash Receptacle



Trash Enclosure



Hi-Lo Drinking Fountain with Bottle Filler





Saw Cut Standard Concrete Pavement Cut



Saw Cut Integral Colored Concrete Pavement



Asphalt Pavement



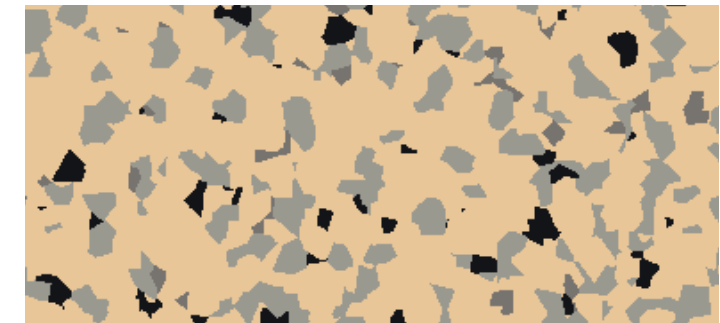
Color Seal Coat Asphalt Pavement



Reset Granite Block with Mortar Joints



Rubber Crumb Tile - Light Blue TPV Mix
75% Sky Blue, 10% Standard Blue; 10% Azure Blue; 5% Black



Rubber Crumb Tile - Beige TPV Mix
70% Beige, 20% Light Grey; 5% Dark Grey; 5% Black



Rubber Crumb Tile





Gleditsia triacanthos



Acer rubrum



Amelanchier canadensis



Cercis canadensis



Betula nigra



Euonymus 'manhattan'



Hydrangea quercifolia



Liriope muscari



Prunus laurocerasus



Pennisetum alopecuroides



Total Project Area: 26,211 SF



Existing Permeability: 6% (1,677 SF)



Proposed Permeability: 20% (5,294 SF)

LEGEND

 PLANTED AREA

SUSTAINABLE PRACTICES

- Reduce storm water runoff with Rain Gardens
- Balance cut and fill
- Use recycled content material
- Improve tree health and growing conditions
- Use site appropriate resilient plant material

DEP Unified Stormwater Rule (USWR) Requirement

USWR stormwater management and permitting is required for this project. USWR is required because more than more than 20,000 SF is being disturbed.











Hickman Playground | Perspective Rendering



Hickman Playground | Aerial Rendering

Legend

-  Project Limit
-  Park Entrance
-  Park Entrance From School Yard
-  Proposed Canopy Tree
-  Proposed Understory Tree
-  Existing Tree





Hickman Playground | Schematic Design

