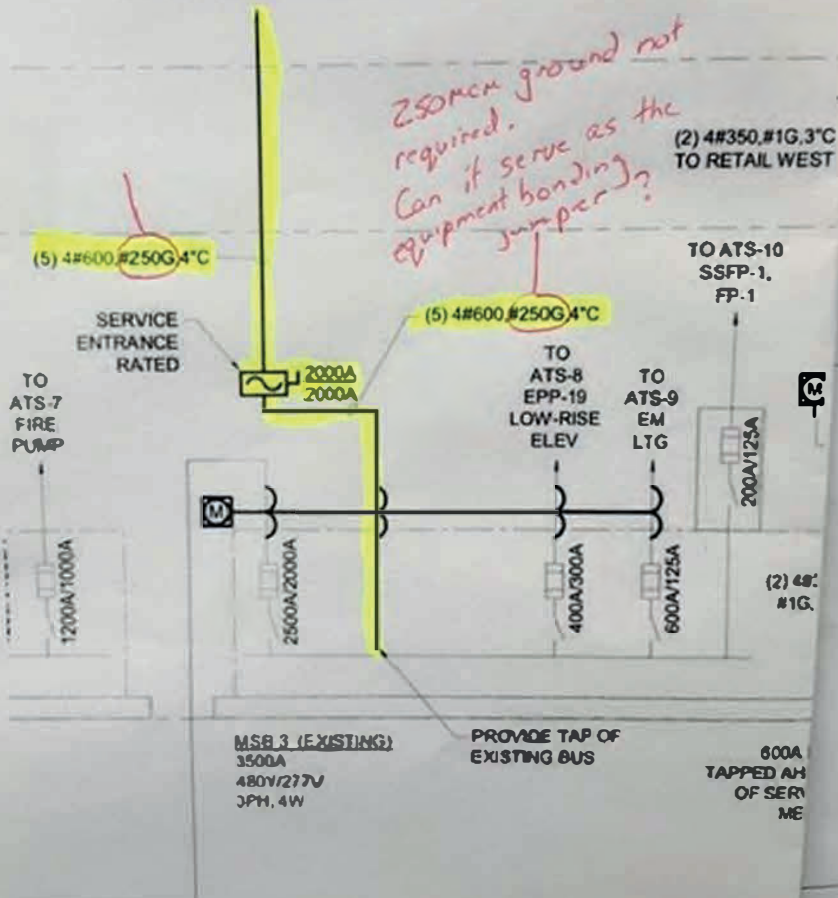


TO SWBD-PLANT-1  
REFER TO PLANT ONE-LINE ON  
E-613 FOR MORE INFORMATION



*250mm ground not required.  
Can it serve as the equipment bonding jumper?*

(5) 4#600.#250G.4\"C

(5) 4#600.#250G.4\"C

(2) 4#350.#1G.3\"C  
TO RETAIL WEST

TO ATS-10  
SSFP-1,  
FP-1

TO  
ATS-7  
FIRE  
PUMP

SERVICE  
ENTRANCE  
RATED

2000A  
2000A

TO  
ATS-8  
EPP-19  
LOW-RISE  
ELEV

TO  
ATS-9  
EM  
LTG

200A/125A

M

1200A/1000A

2500A/2000A

400A/300A

600A/125A

(2) 4#  
#1G.

MSB 3 (EXISTING)  
3500A  
480Y/277V  
3PH, 4W

PROVIDE TAP OF  
EXISTING BUS

600A  
TAPPED AM  
OF SERV  
ME

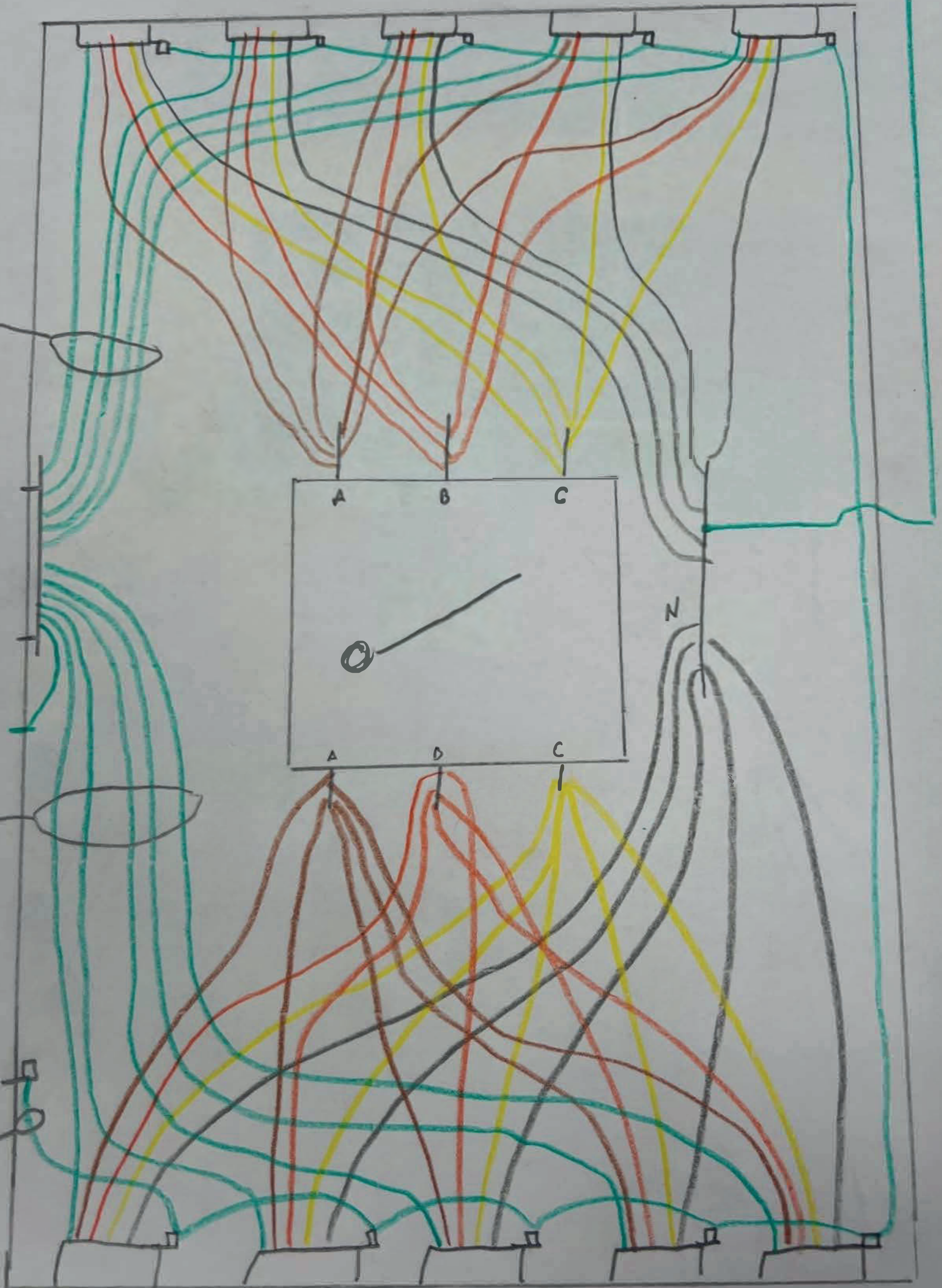
LOCATION TBC UPON COMPLETION OF SUB  
CELLAR SCOPE DESIGN

3/0 to  
collective ground  
bar

250'

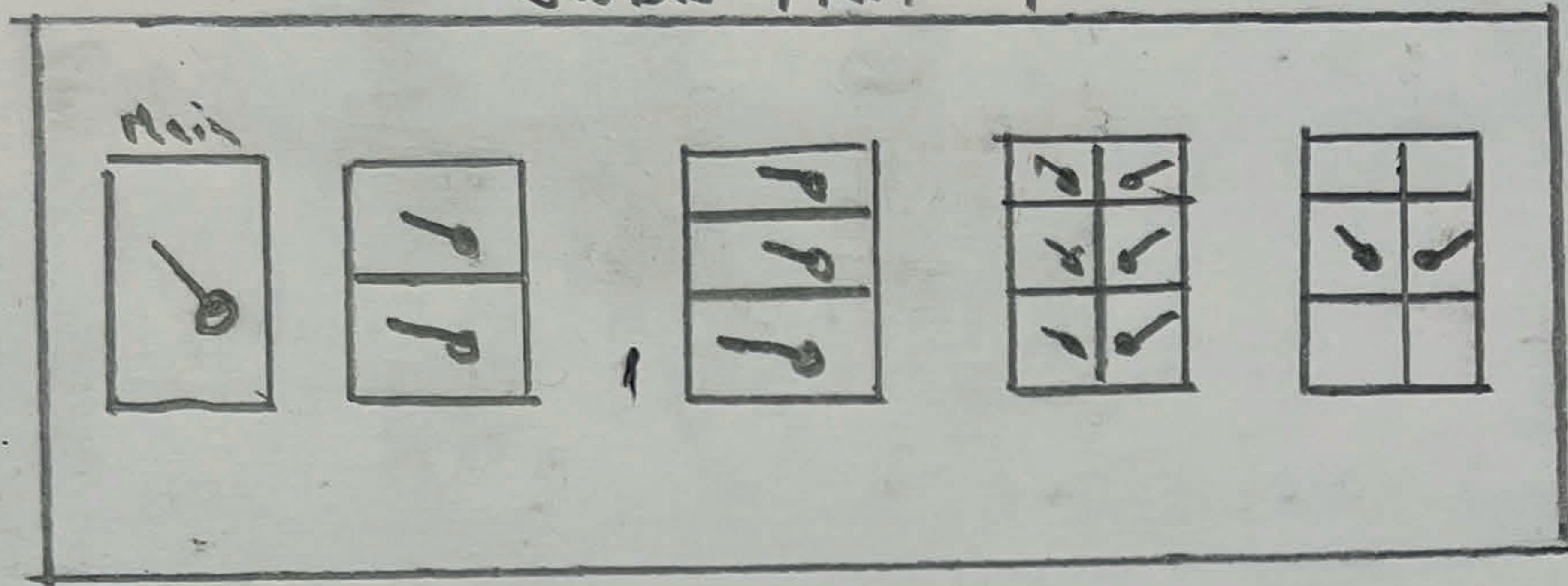
250' CA

3/0



2nd floor Mechanical Plant

JWBD - Plant #1



1st

5 sets of  
4-600's  
1-250 G  
in  
4" conduit

Cellar

