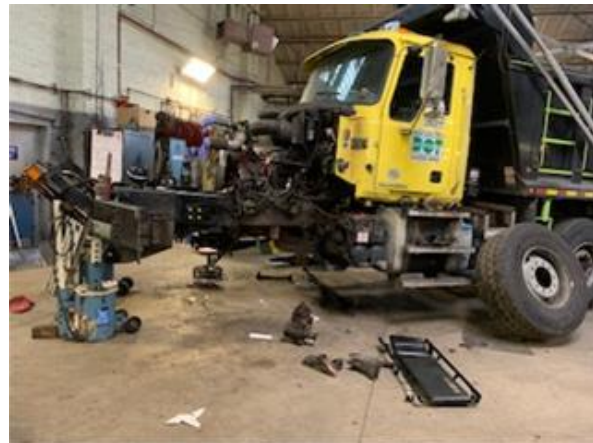


DOT Opens New Brooklyn Truck Repair Facility

By: Keith T. Kerman and Eric Dorcean

City DOT operates over 2,500 heavy and medium-duty trucks and off-road specialized equipment pieces. DOT road repair units are among the highest maintenance equipment pieces in the fleet. As part of our shared services program, NYPD cares for DOT's light-duty vehicles, allowing DOT mechanics and garages to focus on the specialized equipment that is unique to DOT's mission.

NYC Fleet operates 36 dedicated repair facilities citywide. There is also some repair capacity at each DSNY collection garage.



In 2013, DOT lost a truck maintenance facility at the Brooklyn Army Terminal. This facility had serviced more than half of the fleet for DOT asphalt operations. In addition, DOT was bringing in trucks to support new initiatives and to convert some specialized rentals to City-owned units.

Working with OMB and DCAS Real Estate and Fleet, then DOT Fleet Commissioner Conan Freud began working on a project to develop a new truck equipment shop for DOT in Brooklyn. His multi-year focus and coordination led to the now lease acquisition of a new space at Hamilton Place, commonly referred to as the "Bruno Building."

Conan passed away before seeing the fruits of his great work. Associate Deputy Commissioner Eric Dorcean kept the focus on this project, and repair work at the shop has now begun servicing heavy-duty DOT trucks. The facility has growth capacity, with the vision of a 24 hour, seven days a week truck shop alive and well. This site also has the potential to be a shared service location supporting heavy equipment from other agencies in the future.



Congratulations to everyone at DOT involved in this project.

NYC Fleet: Repair Facilities						
City Agency	Brooklyn	Bronx	Manhattan	Queens	Staten Island	Total
Department of Correction	-	-	-	1	-	1
Department of Transportation	2	1		3	1	7
Parks & Recreation	2	1	1	2	-	6
NYPD	4	2	3	3	1	13
FDNY	-	-	1	2	1	4
DSNY, Major Repair Garages	1	-	1	2	1	5
DSNY, District Collection Garages	17	11	13	16	5	62
Total Garages	26	15	19	29	9	98

2020 U.S. Census

[Click here](#) to complete the U.S. Census in just 10 minutes!

Check out past editions of the Fleet Newsletter

[NYC Fleet Newsletter 319, September 10, 2020:](#) Fleet Services Stay Strong Through Pandemic

[NYC Fleet Newsletter 318, August 26, 2020:](#) Vision Zero Driver Safety Training Goes Online

[NYC Fleet Newsletter 317, August 19, 2020:](#) NYC Parks Mobilizes to Address Tree Damage

[NYC Fleet Newsletter 316, August 11, 2020:](#) Fleet Helps NYC Get Cool

[NYC Fleet Newsletter 315, August 6, 2020:](#) NYC Fleet Implements Biotire Project

Check out the [complete archive](#).

Visit us on the web at nyc.gov/DCAS