



City Canvas Pre-Approved Art Portfolio

Dennis RedMoon Darkeem, *Travelers*, 2024

City Canvas

Pre-Approved Art

There are more than 300 miles of construction fences, sidewalk sheds, and scaffolding in New York City. While these temporary protective structures are important for pedestrian safety, they are often unappealing components of the urban landscape. City Canvas is a program of the NYC Department of Cultural Affairs (DCLA) which allows the installation of temporary visual art on eligible temporary protective structures. City Canvas both improves the pedestrian experience for NYC residents and visitors across the five boroughs, while providing opportunities for local artists to display their work in prominent locations across the five boroughs.

City Canvas was initiated as a temporary pilot program in 2018 and made permanent in September 2023 through a local law which amended the New York City Charter and Building Code to permit the display of artwork on temporary protective structures (i.e., construction sheds, fences, and scaffolding). When filing an initial application permit for a temporary protective structure, property owners are automatically enrolled in the program and are offered an opt out option. Under the City Canvas program, there are two avenues for property owners to install artwork on temporary protective structures, Site-Specific Artwork and Pre-Approved Artwork.

Pre-Approved Artwork (one example of which is featured in this document) is commissioned directly by DCLA through periodic open calls pursuant to section 2508 of Chapter 67 of the New York City charter. Each commission complies with all expected standards and may be licensed by property owners for a fee to be negotiated with artists. Visit our Licensing and Fee Guidelines online at nyc.gov/citycanvas

Each Pre-Approved Artwork includes a suite of three components designed for each type of temporary protective structure: construction sheds, fences, and scaffolding. Each component can be used discretely or in ensembles. All Pre-Approved Artworks are designed to be highly flexible and can adapt to a wide range of construction site contexts and conditions. The mockups presented here are for a 100 foot wide construction site that is nine stories tall. Each component mockup is accompanied by a verbal description written by the artist.

For questions and inquiries email: citycanvas@culture.nyc.gov

Step by Step Process

- Select a piece from the Pre-Approved Artwork Portfolio.
- Review the Licensing and Fee Guidelines online at nyc.gov/citycanvas
- Email citycanvas@culture.nyc.gov a request to use selected Pre-Approved Artwork.
- DCLA will liaise a connection with Artist.
- Negotiate and complete a licensing agreement with Artist.
- Artist will provide the art files.
- Prepare a print layout with a fabricator.
- Confirm print layout with Artist.
- Send DCLA final layout and completed license agreement.
- DCLA will review, sign, and send back an approval notice.
- Upload the approval notice to DOB NOW.

Other Artworks in The Pre-Approved Art Portfolio

Ebony Bolt, *The Jungle and The City*, 2024

Lauren Camara, *Paper Stories*, 2024

Venazir Hannah Martinez, *The Shaping of New York*, 2024

Neko Jiang, *Hidden Forest*, 2024

Denae N. Howard, *Little Titans Run New York*, 2024

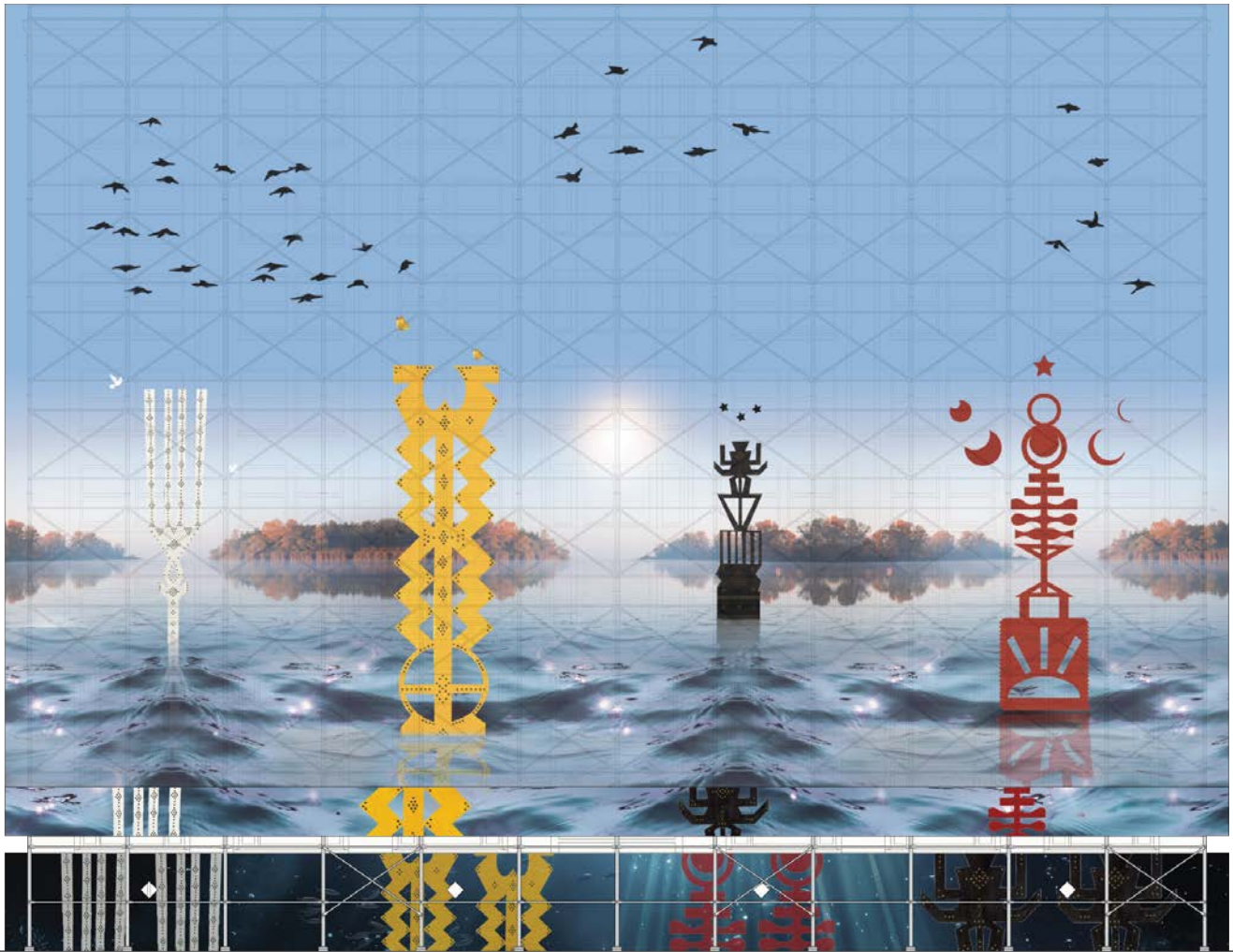
Dennis RedMoon Darkeem, *Travelers*, 2024

Bayeté Ross Smith, *Our Kind Of People and Mirrors*, 2024

Nikki Scioscia, *Plant Walk*, 2024

Zazu Swistel, *The Urbanite's Clinic For Decadence and Decay*, 2024

Annette Weintraub, *The Myrtle Walks*, 2024



Dennis RedMoon Darkeem, *Travelers*, 2024

Artist Statement

Dennis RedMoon Darkeem is a multi-disciplinary artist based in The Bronx, whose practice spans installations, photography, sculpture, drawing, painting, digital illustration, sound and performance. His work revolves around themes of transformation, generation, and honoring, often drawing inspiration from his everyday surroundings and community interactions. Earning awards and fellowships from esteemed organizations such as the BCA, Culture push, The Bronx Museum, Art Omi, Wave Hill, Ucross, Queens museum and the Laundromat Project. His art has been exhibited locally and nationally, showcasing his ability to connect with a diverse audience.

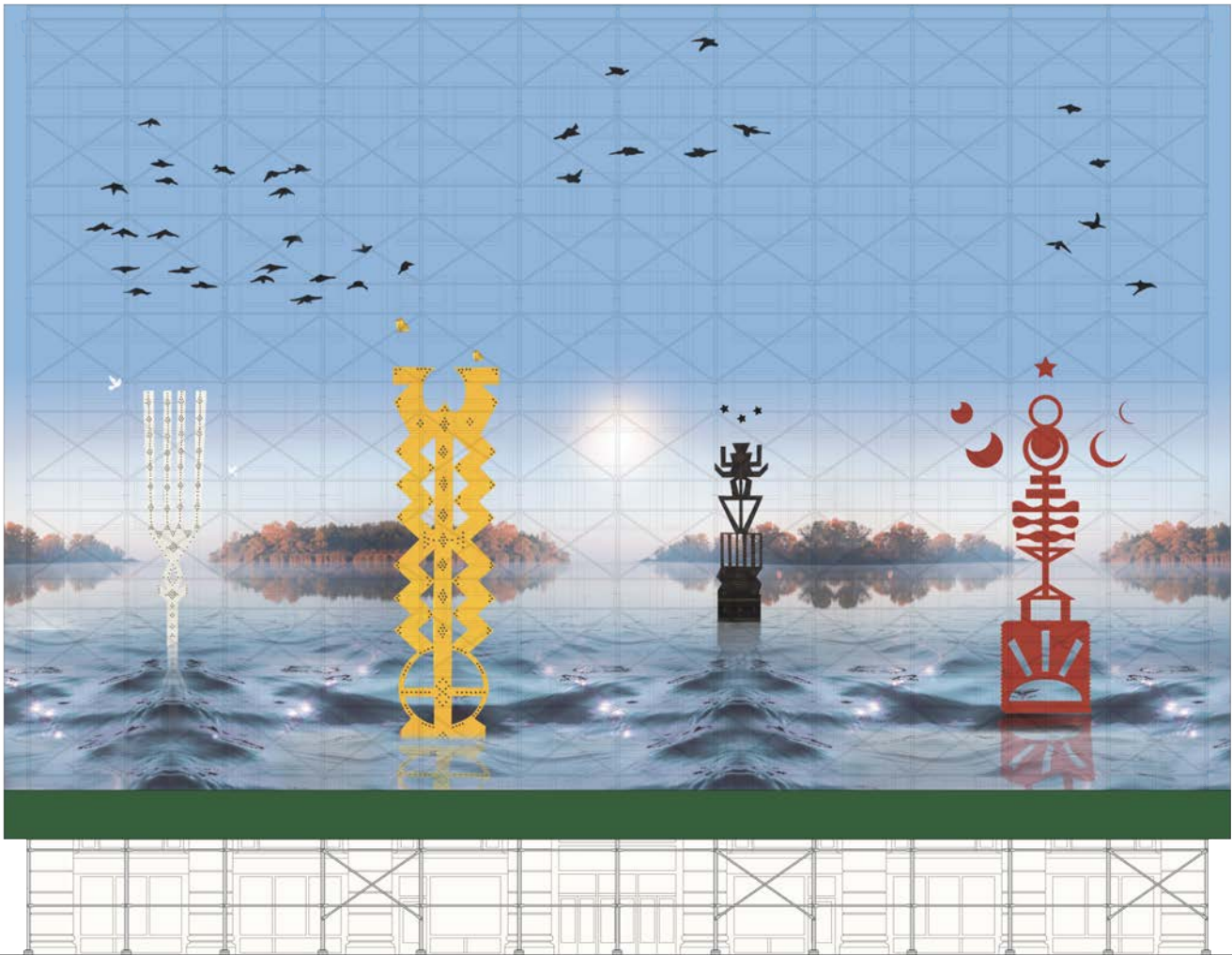
Darkeem's artistic approach involves reimagining familiar objects and exploring the architectural elements he encounters in his daily life. Through a mixed-media approach, he crafts layered and thought-provoking works that invite viewers to delve into his personal narratives and those of the communities he engages with. His background and heritage play a significant role in shaping his creative vision, with influences from his Black and Indigenous Seminole roots interwoven into his art.

Project Description

"Travelers" is a digital collage by Dennis RedMoon Darkeem that merges photographic elements with sculptural imagery, weaving together ancient symbols, New York City landscapes, and Indigenous traditions. The work explores the interconnectedness of water and land, reflecting on the unique pathways each person navigates throughout their life.

Through "Travelers," Darkeem aims to inspire reflection on personal connections, encouraging viewers to consider their relationship with nature and their cultural heritage. He hopes that this piece evokes a sense of nostalgia and prompts a deeper understanding of the connections that bind us to the land, the water, and each other.

Artwork honoring the four Direction that gives voice to the healing of the medicine wheel, the mound Builders and Mounds all around the United States, central and South America. This piece acknowledges ancestors that have come before us and acknowledges those still here. I hope to spark curiosity, bring Beauty and education through my work. I want my work to give representation of indigenous art on the east coast and the cultural connections and exchange created each day through Art and travel.



Dennis RedMoon Darkeem, *Travelers*, 2024

Supported Scaffold / Netting Artwork Description

The RedMoon: This totem represents the relationships between the Moon, the Sun, waters, and the Earth. The circle above represents the Sun, and the three moons represent the rotation of the Moon and stars, the center lines represent the mountains, waters and sea life. The center triangles represent balance in connection between home and nature.

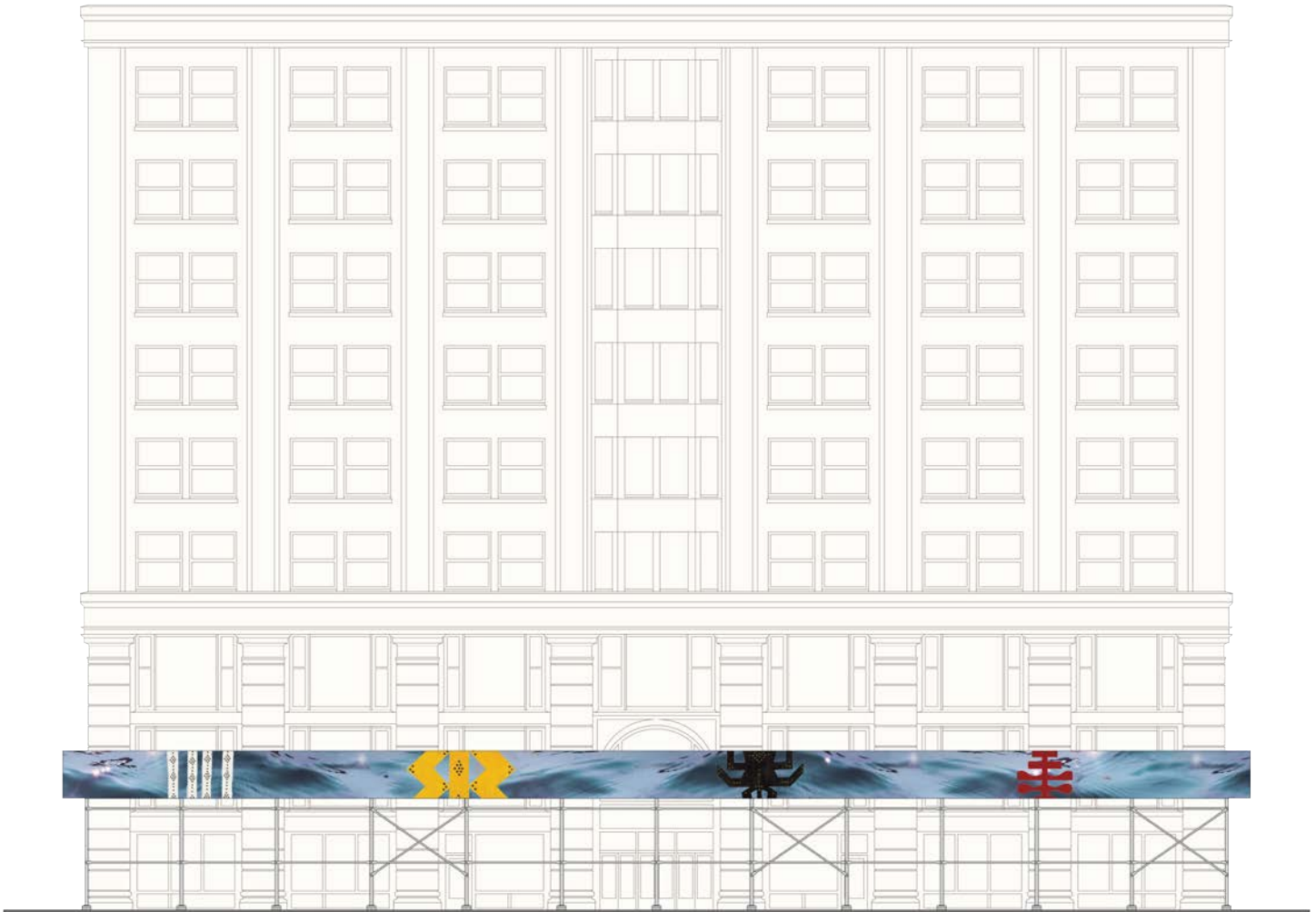
North Wings: This totem honors the skies, and the wing Spirit guides that fly. The birds represent different bird species, knowledge and understanding. The bottom design represents the connection between the sun, people, land, and water. This design also honors winter with the two side mountains.

Black Sweetgrass: This totem represents and honors the Unseen. The top stars represent the atmosphere and the connection to Earth. The symbols represent insects and plant life in the connections to Healing. These designs represent wind, the owl messenger and seasons changing.

Yellow sunrise: This totem represents Peace and Friendship after the 1700's treaties. The hawks represent the force of the night and the day, symbols of the endless movement of life. The totem focuses on a balance that creates healing, representative by the medicine wheel. The designs on each side represent the sunshine and protection of people.

Supported Scaffold / Netting

Scaffold is a temporary elevated platform, including its supporting structure, erected at a construction site to support workers and/or materials and providing aboveground access to the building's exterior. A scaffold may also serve as a frame for installing safety netting. Artwork displayed on supportive scaffolds will be printed directly onto netting and secured using zip ties that loop directly through it. More information is available on the [Department of Building's website](#).



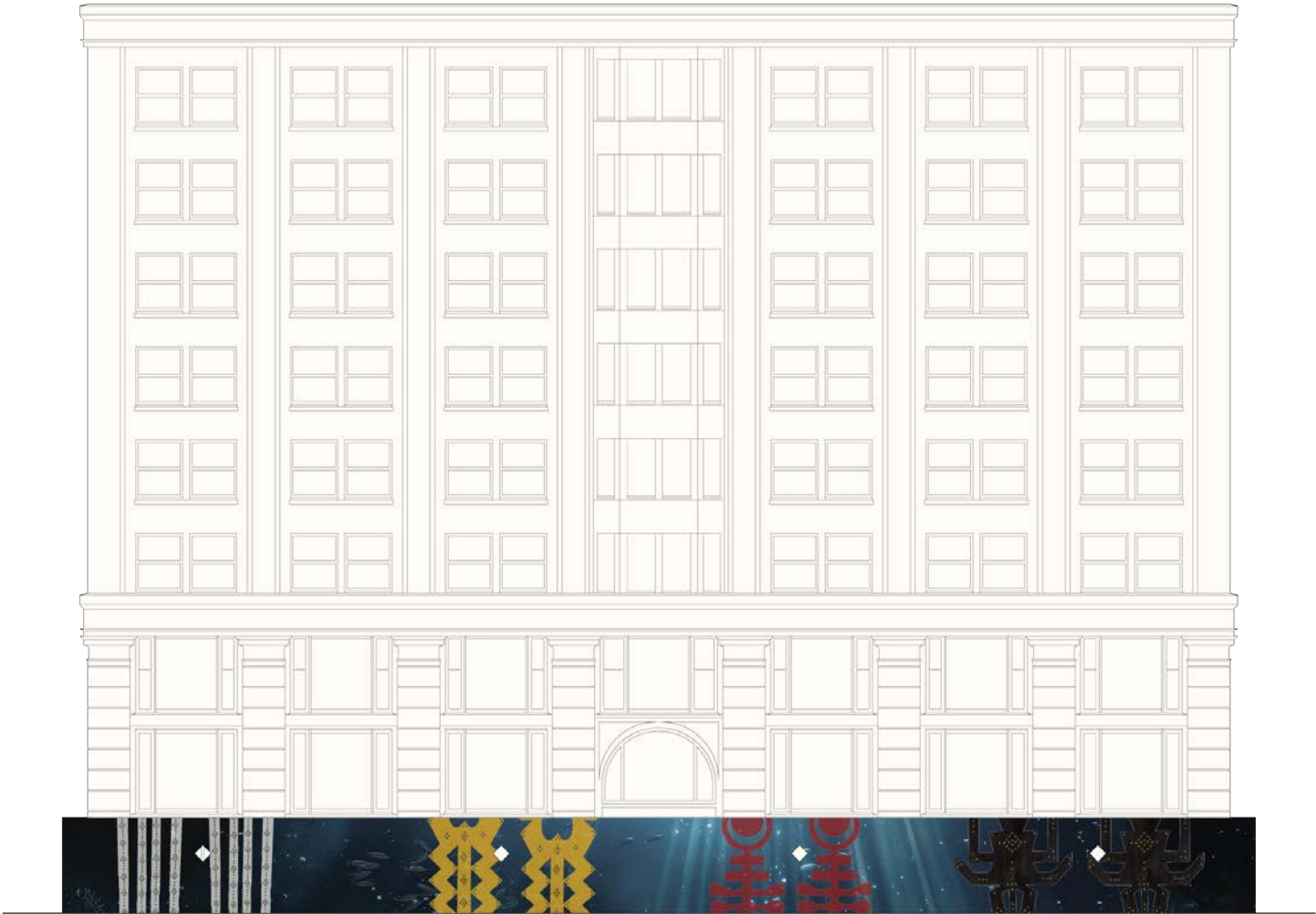
Dennis RedMoon Darkeem, *Travelers*, 2024

Sidewalk Shed Artwork Description

The sidewalk shed is designed with water waves that reflect symbolic features representing the four cardinal directions—Northeast, Southwest—as well as the elements of nature that connect deeply with humanity.

About Sidewalk Sheds

The most common temporary protective structures are sidewalk sheds which are made of wood and must be a minimum of 5 feet wide, 4 feet tall, and provide a minimum of 8 feet clearance. Artwork displayed on a sidewalk shed will be printed on vinyl that will be fastened to the outer sides and ends of sheds either by stretching it over the shed and fastening to the back or by affixing such material to self-adhesive panels that adhere directly to the shed. More information is available on the [Department of Building's website](#).



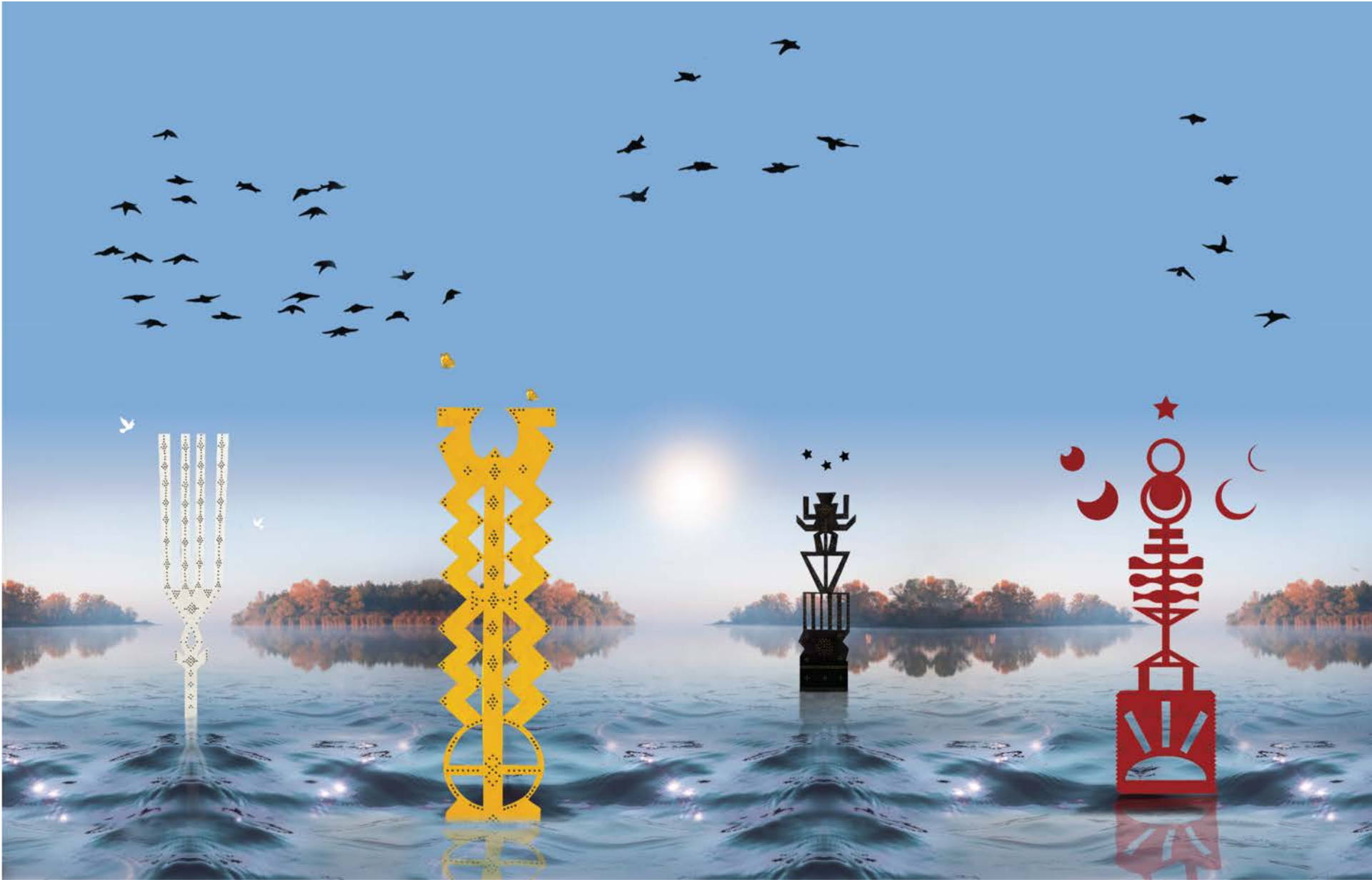
Dennis RedMoon Darkeem, *Travelers*, 2024

Construction Fence Artwork Description

The construction fencing showcases local marine life, including whales, sea turtles, and various smaller fish, all illuminated by rays of sunlight. In the background, sculptures embody the four directions, symbolizing the reflection from above. This artwork draws attention to the critical importance of water, climate change, and sea life, highlighting their profound connections to our daily existence.

About Construction Fences

Construction fences are at least 8 feet high and may be made of wood, corrugated metal, or chain link materials. Fences made of solid materials include 1 x 1 foot plexi-glass viewing panels every 25 feet and are installed between three and six feet above ground level. Artwork displayed on a construction fence will be printed on vinyl that will be fastened to the outer sides and ends of fence either by stretching it over the fence and fastening to the back or by affixing such material to self-adhesive panels that adhere directly to the surface. Chain link fencing may require the vinyl print to include grommets in order to secure the art using zip-ties. More information is available on the [Department of Building's website](#).

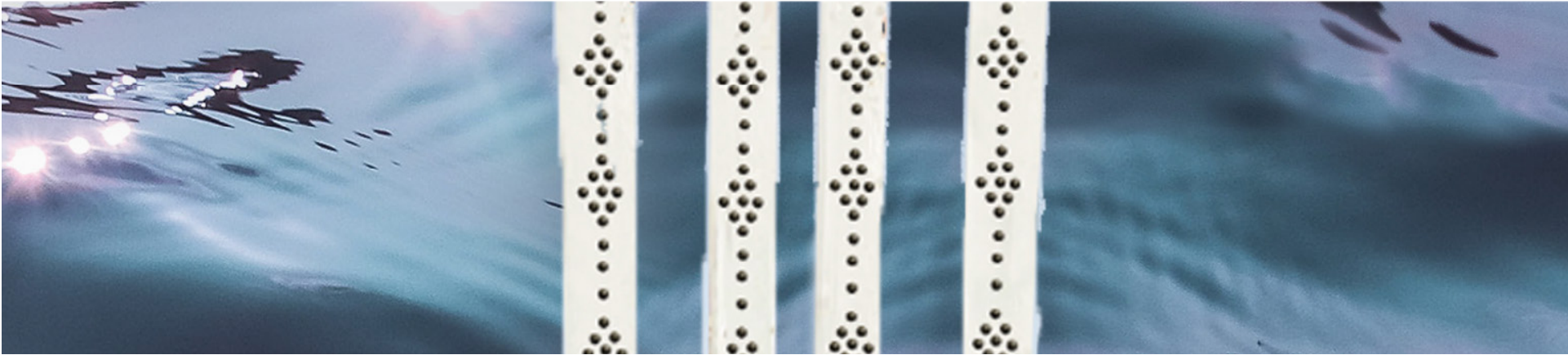


Supported Scaffold / Netting Artwork

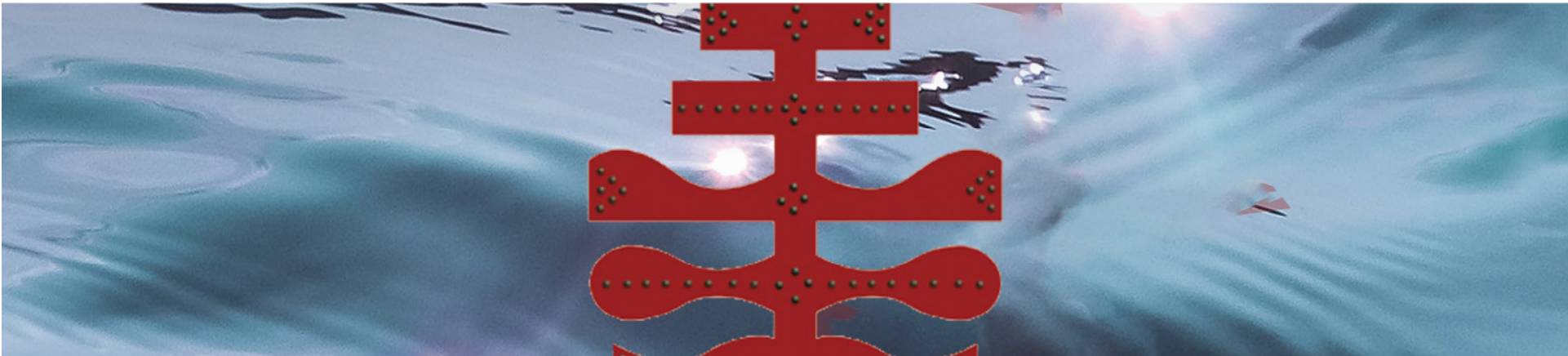
Dennis RedMoon Darkeem, *Travelers*, 2024



Sidewalk Shed Artwork



Sidewalk Shed Artwork, detail



Sidewalk Shed Artwork, detail

Dennis RedMoon Darkeem, *Travelers*, 2024



Construction Fence Artwork



Construction Fence Artwork, detail



Construction Fence Artwork, detail