



**City Canvas Pre-Approved Art Portfolio**

Denae Howard, *Little Titans Run New York*, 2024

# City Canvas

## Pre-Approved Art

There are more than 300 miles of construction fences, sidewalk sheds, and scaffolding in New York City. While these temporary protective structures are important for pedestrian safety, they are often unappealing components of the urban landscape. City Canvas is a program of the NYC Department of Cultural Affairs (DCLA) which allows the installation of temporary visual art on eligible temporary protective structures. City Canvas both improves the pedestrian experience for NYC residents and visitors across the five boroughs, while providing opportunities for local artists to display their work in prominent locations across the five boroughs.

City Canvas was initiated as a temporary pilot program in 2018 and made permanent in September 2023 through a local law which amended the New York City Charter and Building Code to permit the display of artwork on temporary protective structures (i.e., construction sheds, fences, and scaffolding). When filing an initial application permit for a temporary protective structure, property owners are automatically enrolled in the program and are offered an opt out option. Under the City Canvas program, there are two avenues for property owners to install artwork on temporary protective structures, Site-Specific Artwork and Pre-Approved Artwork.

Pre-Approved Artwork (one example of which is featured in this document) is commissioned directly by DCLA through periodic open calls pursuant to section 2508 of Chapter 67 of the New York City charter. Each commission complies with all expected standards and may be licensed by property owners for a fee to be negotiated with artists. Visit our Licensing and Fee Guidelines online at [nyc.gov/citycanvas](https://nyc.gov/citycanvas)

Each Pre-Approved Artwork includes a suite of three components designed for each type of temporary protective structure: construction sheds, fences, and scaffolding. Each component can be used discretely or in ensembles. All Pre-Approved Artworks are designed to be highly flexible and can adapt to a wide range of construction site contexts and conditions. The mockups presented here are for a 100 foot wide construction site that is nine stories tall. Each component mockup is accompanied by a verbal description written by the artist.

For questions and inquiries email: [citycanvas@culture.nyc.gov](mailto:citycanvas@culture.nyc.gov)

### Step by Step Process

- Select a piece from the Pre-Approved Artwork Portfolio.
- Review the Licensing and Fee Guidelines online at [nyc.gov/citycanvas](https://nyc.gov/citycanvas)
- Email [citycanvas@culture.nyc.gov](mailto:citycanvas@culture.nyc.gov) a request to use selected Pre-Approved Artwork.
- DCLA will liaise a connection with Artist.
- Negotiate and complete a licensing agreement with Artist.
- Artist will provide the art files.
- Prepare a print layout with a fabricator.
- Confirm print layout with Artist.
- Send DCLA final layout and completed license agreement.
- DCLA will review, sign, and send back an approval notice.
- Upload the approval notice to DOB NOW.

### Other Artworks in The Pre-Approved Art Portfolio

Ebony Bolt, *The Jungle and The City*, 2024

Lauren Camara, *Paper Stories*, 2024

Venazir Hannah Martinez, *The Shaping of New York*, 2024

Neko Jiang, *Hidden Forest*, 2024

Denae N. Howard, *Little Titans Run New York*, 2024

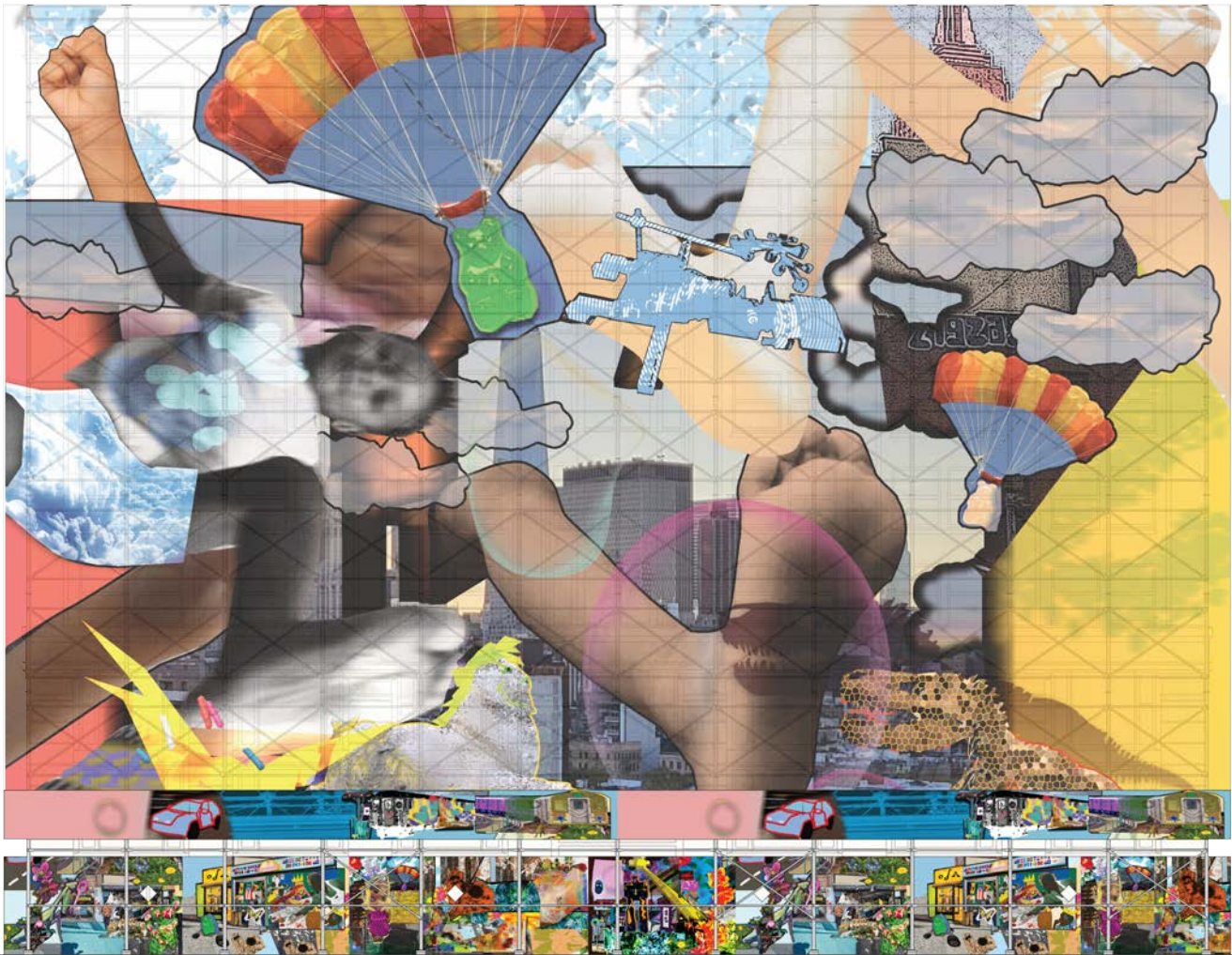
Dennis RedMoon Darkeem, *Travelers*, 2024

Bayeté Ross Smith, *Our Kind Of People and Mirrors*, 2024

Nikki Scioscia, *Plant Walk*, 2024

Zazu Swistel, *The Urbanite's Clinic For Decadence and Decay*, 2024

Annette Weintraub, *The Myrtle Walks*, 2024



Denae Howard, *Little Titans Run New York*, 2024

**Artist Statement**

Denae Howard (Artschoolscammer) is a Brooklyn-based Conceptual artist, visionary, educator, curator and advisor. At the moment my focus is to serve solely as a collaborative artist creating alongside my community. For 10+ years I have actively cultivated this dynamic by birthing the cooperative #Dayonesart, where myself and other creatives invest our energy by forcing necessary conversation through expression to make impactful installations, conversations and creations. My work promotes principles of evolution with sustainable practices by creating civic solutions. Working from a Higher Consciousness with guidance from my spirit and community elders—I actively forage tools to deal with social, economic and environmental injustices. My focus is imagining the limitless opportunities of joyous existence and creating a divergence from the magnetism of greed by illuminating the nature of the Hungry Ghost. I am an artist and I am here to create!

**Project Description**

This work is an imagination of Artschoolscammers 90's Childhood growing up in New York City with a mashup of the present skyline. In the work, the Titan Children guard the inhabitants of New York and play feverishly realizing the Big Apple as their backyard. In this mixed media collage, the viewer will find aspects of my paintings and childhood memories. Ie Free lunch thanks to the likes of the Black Panthers and endless museums from Brooklyn to Staten Island that kept me excited. In the make up there are also hidden stop animations and loads of photo op's.



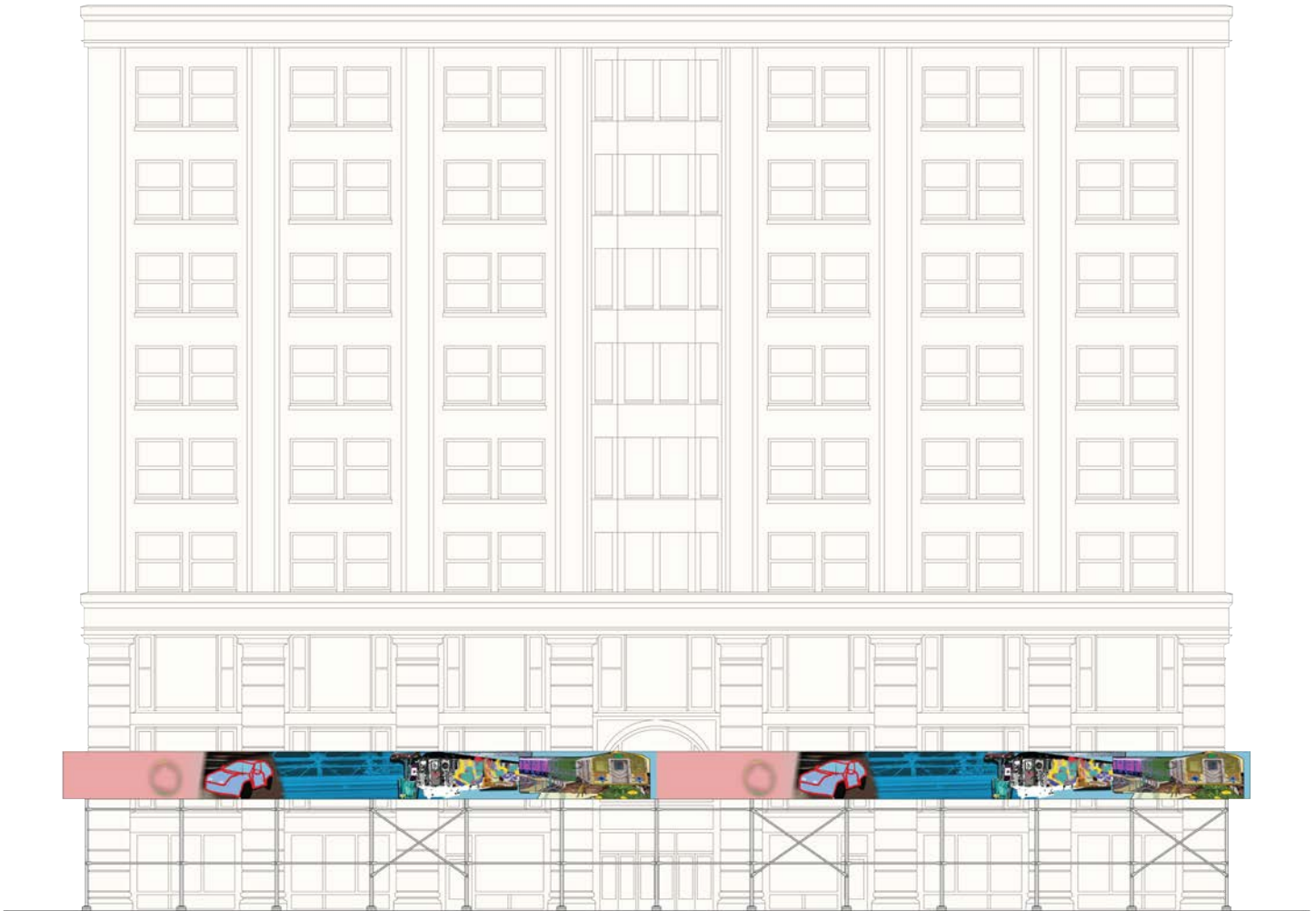
Denae Howard, *Little Titans Run New York*, 2024

**Supported Scaffold / Netting Artwork Description**

The Safety Net features 3 Child Giants stepping across the Brooklyn bridge—and smashing down on to T Rex from the Museum of Natural History. There are also features of gummy bear parachuters, bubbles blowing up to the sky and the stone lion from the NYC Public Library. There are also building block airplanes and cars featured. I choose to highlight basic ideas of play by focusing on scale and perspective. By creating larger than life playful children the viewers can interact with the piece. People can be invited to take pictures underneath at safe vantage points.

**Supported Scaffold / Netting**

Scaffold is a temporary elevated platform, including its supporting structure, erected at a construction site to support workers and/or materials and providing aboveground access to the building's exterior. A scaffold may also serve as a frame for installing safety netting. Artwork displayed on supportive scaffolds will be printed directly onto netting and secured using zip ties that loop directly through it. More information is available on the [Department of Building's website](#).



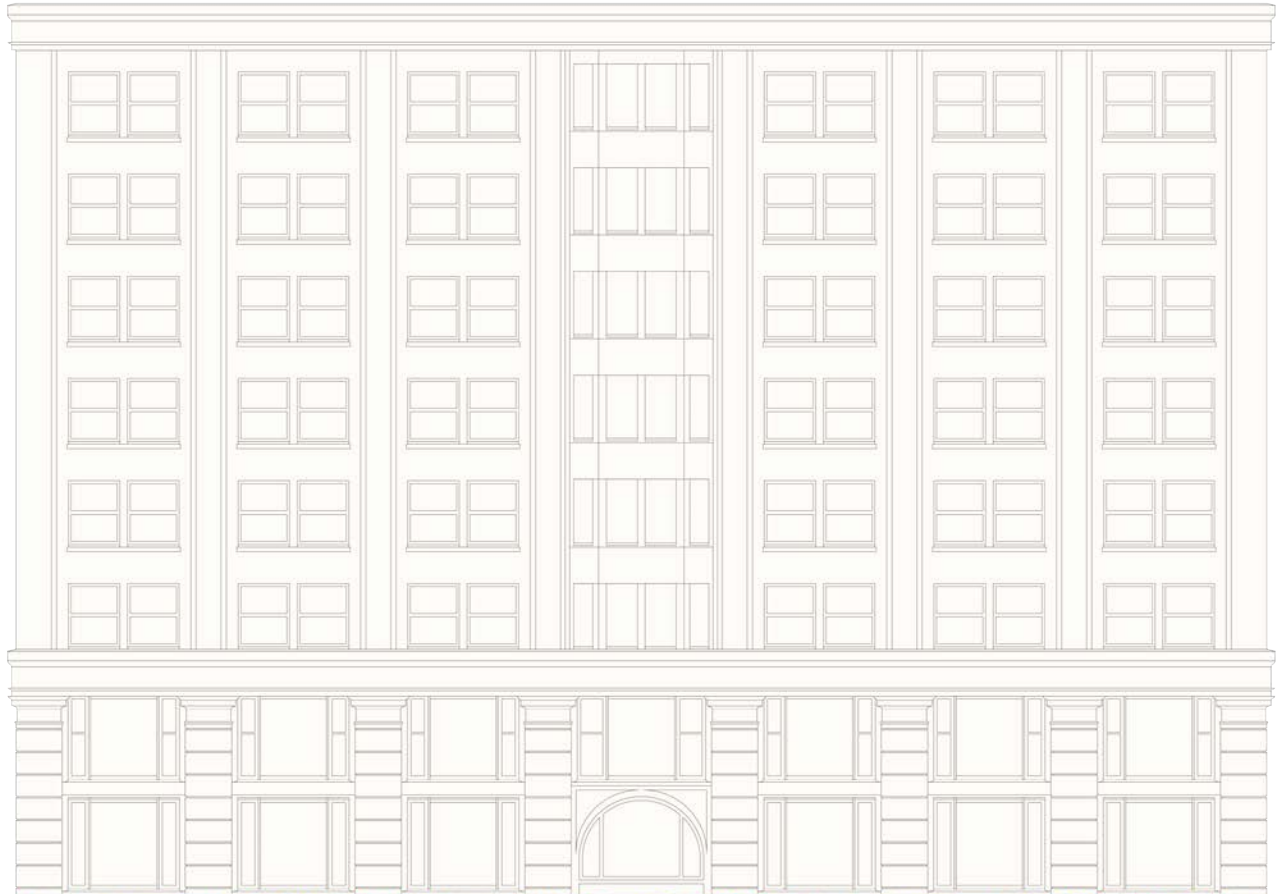
## Denae Howard, *Little Titans Run New York*, 2024

### **Sidewalk Shed Artwork Description**

The Sidewalk Shed features the continuation of the safety netting collage. There is imagery of a painted car and a collage of a NYC Train enmeshed with the Brooklyn Bridge. This imagery is positioned under the children deliberately to illustrate their size. There are instances of collage work created with students at different art programs and classes (Ifetayo Cultural Arts Program, Project Art USA and NYC Department of Education).

### **About Sidewalk Sheds**

The most common temporary protective structures are sidewalk sheds which are made of wood and must be a minimum of 5 feet wide, 4 feet tall, and provide a minimum of 8 feet clearance. Artwork displayed on a sidewalk shed will be printed on vinyl that will be fastened to the outer sides and ends of sheds either by stretching it over the shed and fastening to the back or by affixing such material to self-adhesive panels that adhere directly to the shed. More information is available on the [Department of Building's website](#).



Denae Howard, *Little Titans Run New York*, 2024

**Construction Fence Artwork Description**

The Construction Fence is a compilation of 6 collages. There is play with perspective and size of each of the focal points on the 6 Collages. I choose to position them in a way so they could potentially look like one long NYC block. There you also find the source of the bubbles, which is coming from the Sag Harbor Children’s Museum Grasshopper. There also includes markets that can be found in Brooklyn, in real life and replicas that can be found at the Brooklyn Children’s Museum. There is also a peak at an homage to the Black Panthers Free Lunch for kids situated between community gardens. To keep in mind the ideas of play—I included another worldly baby doll and a robot. The robot was created by one of my 1st graders in a Project Art Class I taught.

**About Construction Fences**

Construction fences are at least 8 feet high and may be made of wood, corrugated metal, or chain link materials. Fences made of solid materials include 1 x 1 foot plexi-glass viewing panels every 25 feet and are installed between three and six feet above ground level. Artwork displayed on a construction fence will be printed on vinyl that will be fastened to the outer sides and ends of fence either by stretching it over the fence and fastening to the back or by affixing such material to self-adhesive panels that adhere directly to the surface. Chain link fencing may require the vinyl print to include grommets in order to secure the art using zip-ties. More information is available on the [Department of Building’s website](#).

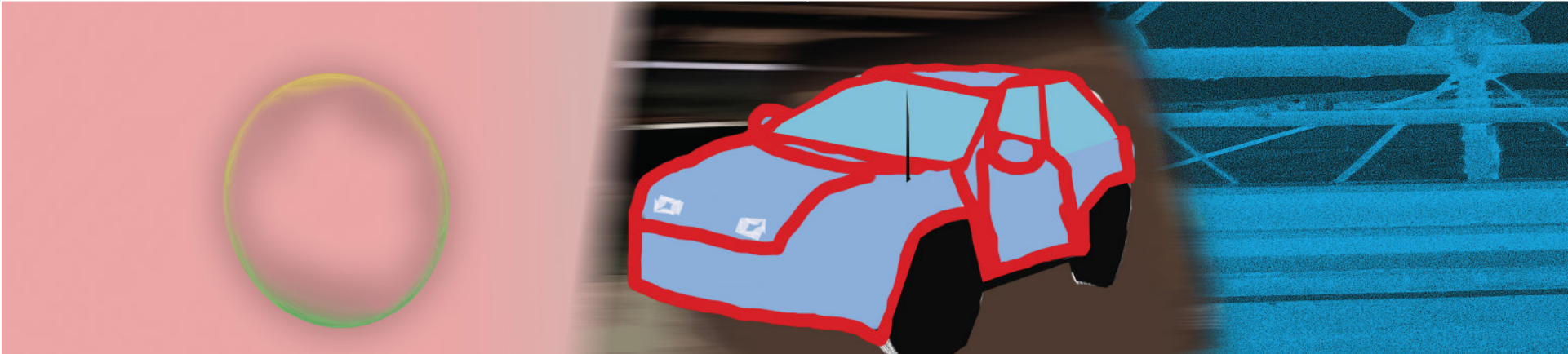


Supported Scaffold / Netting Artwork

Denae Howard, *Little Titans Run New York*, 2024



Sidewalk Shed Artwork



Sidewalk Shed Artwork, detail



Sidewalk Shed Artwork, detail



Denae Howard, *Little Titans Run New York*, 2024



Construction Fence Artwork



Construction Fence Artwork, detail



Construction Fence Artwork, detail