

EXECUTIVE SUMMARY

During construction activities for the Installation of East Side Coastal Resiliency from Montgomery Street to East 15th Street in Manhattan, project ID SANDRESM1, New York City (NYC) Department of Design and Construction's (DDC) contractor conducted soil sampling pursuant to the regular agency protocol. During testing of the 10 soil samples collected within the project area, two (2) samples were found to contain hazardous levels of lead exceeding USEPA standards. The samples were collected on 8/28/23, with results received on 9/14/2023 and transmitted to the PMCM team.

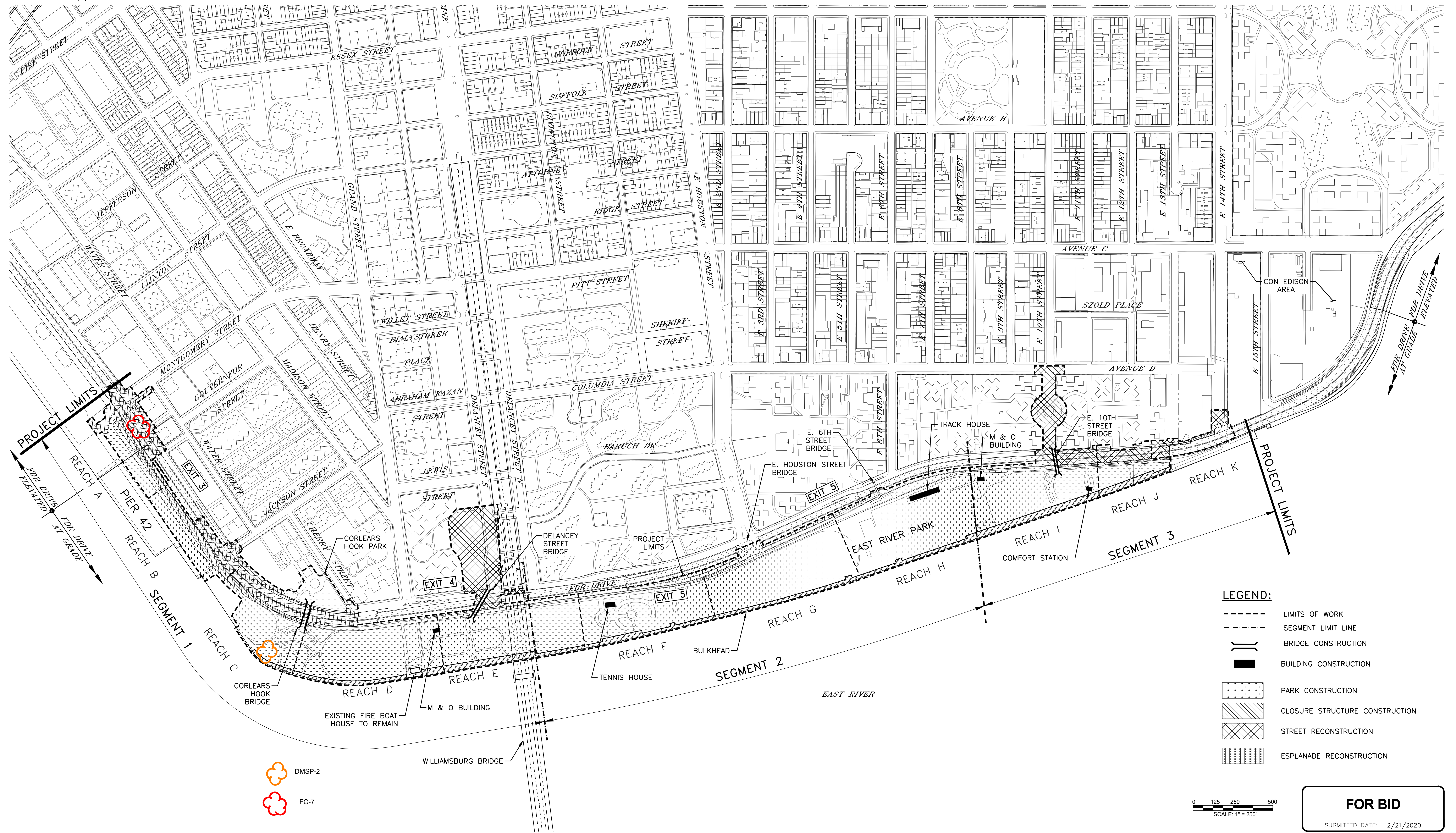
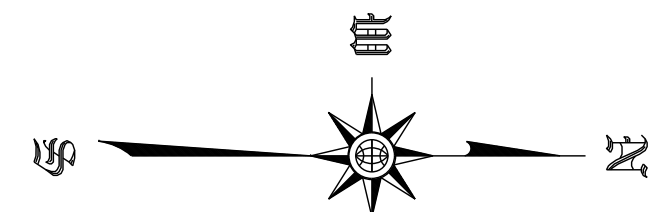
As noted, two (2) samples came back with TCLP lead detected at 6.35 mg/L (DMSP-2) and 28.8 mg/L (FG-7) which exceed the USEPA Hazardous Waste Limit of 5.00 mg/L. Sample DMSP-2 was collected from stockpiled soils that were generated during excavation for pre-trenching in Reach D. DMSP-2 is stockpiled in Reach C. Sample FG-7 was collected from a test pit excavated to 7 feet below grade (ftbg) along FDR Drive and Montgomery Street. The soil located at FG-7 is underground and undisturbed. The location of hazardous lead locations are shown on the attached figures. The impacted soil will be secured, removed and disposed to ensure public safety.

Initial laboratory analysis indicated the stockpile sample collected from DMSP-2 exhibited a total lead concentration of 489 parts per million (ppm) and a TCLP lead concentration of 6.35 mg/L. A TCLP result as high as 6.35 mg/L with total lead detected at only 489 ppm is atypical. The sample was re-analyzed for total lead and TCLP lead by Phoenix Environmental Laboratories, Inc. in order to verify the hazardous result. The re-analysis indicated total lead was detected at 3640 ppm and TCLP lead was detected at .27 mg/L, a non-hazardous concentration. The Lab Director of Phoenix Environmental Labs indicated the sample matrix and homogeneity of the sampled material were the reason for the inconsistency in results.

Prior to removal and disposal, the contractor will perform all work in accordance with the previously submitted and approved Material Handling Plan (MHP), Health and Safety Plan (HASP) and Community Air Monitoring Plan (CAMP) currently on file with DDC.

The full project scope for SANDRESM1 consists of construction of flood protection measures including installation of flood walls and closure structures. Project plans include construction of an above ground floodwall, a transition retaining wall, and installation of flood gates. The scope of work also includes infrastructure improvements to mitigate risk of flood damage including reconstruction of water mains and sewers. East River Park will be elevated nine feet and reconstructed, including existing park structures and recreational features, the amphitheater, track facility and tennis house. Proposed work also includes construction of new pedestrian bridges, street lighting and traffic work.

SANDRESM1 BIDDABLE PACKAGE 2/21/2020



- LEGEND:**
- LIMITS OF WORK
 - SEGMENT LIMIT LINE
 - BRIDGE CONSTRUCTION
 - BUILDING CONSTRUCTION
 - PARK CONSTRUCTION
 - CLOSURE STRUCTURE CONSTRUCTION
 - STREET RECONSTRUCTION
 - ESPLANADE RECONSTRUCTION

- DMSP-2
- FG-7

0 125 250 500
SCALE: 1" = 250'

FOR BID
SUBMITTED DATE: 2/21/2020

NO.	DATE	DESCRIPTIONS REVISIONS	BY	APPR'D

FINAL DESIGN SUBMITTED BY:
AKRF KSE
The AKRF-KSE JV

FINAL DESIGN PREPARED BY:
KSE
KS ENGINEERS, P.C.
NAME OF CONSULTANT



CITY OF NEW YORK
DEPARTMENT OF DESIGN + CONSTRUCTION
DIVISION OF INFRASTRUCTURE
BUREAU OF DESIGN

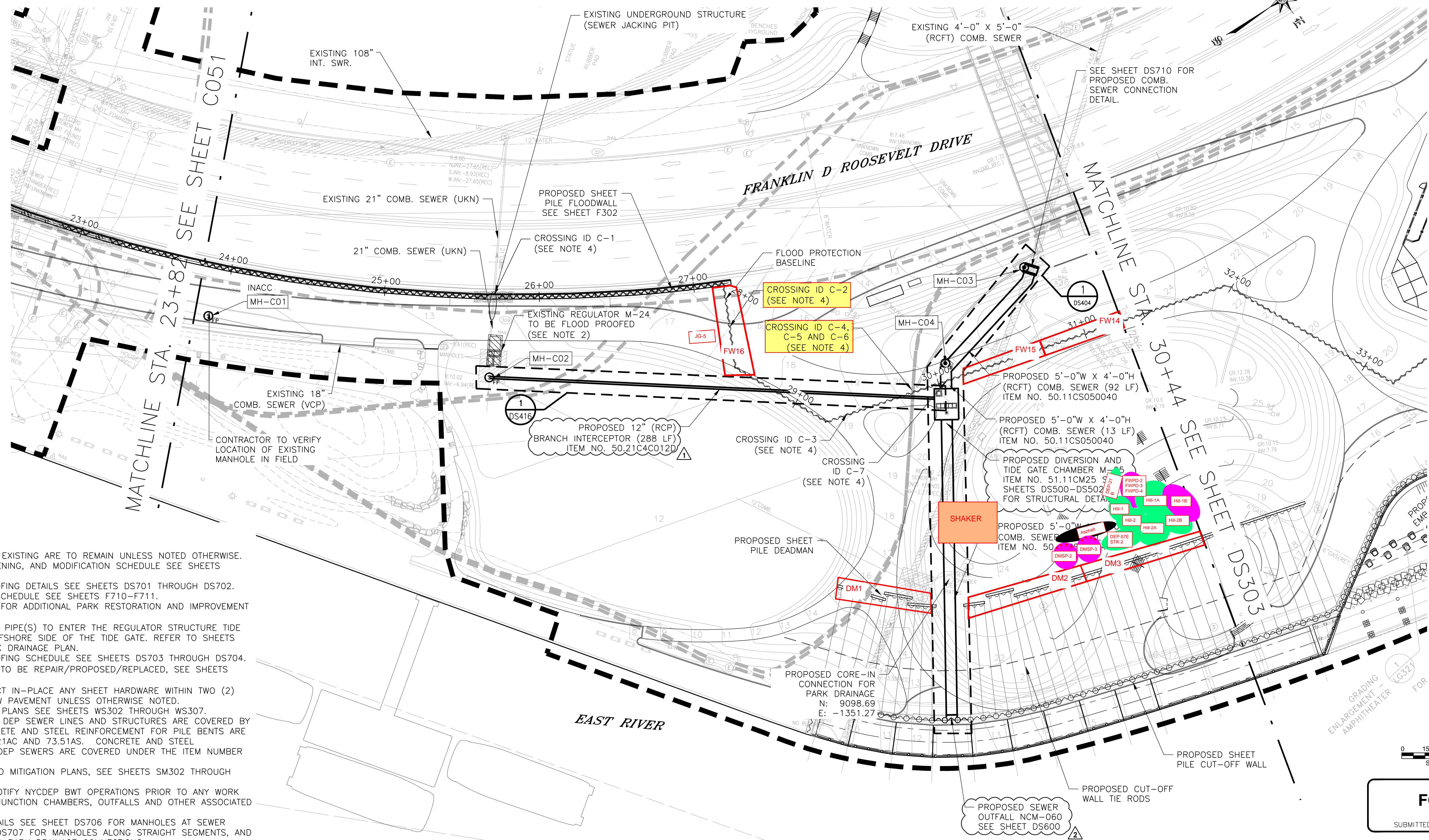
PROJECT GENERAL CONSTRUCTION
PLAN

KSE DRAWN BY _____ SANDRESM1-TC101-00.dwg
CADD FILE

INSTALLATION OF
EAST SIDE COASTAL RESILIENCY
BOROUGH OF MANHATTAN

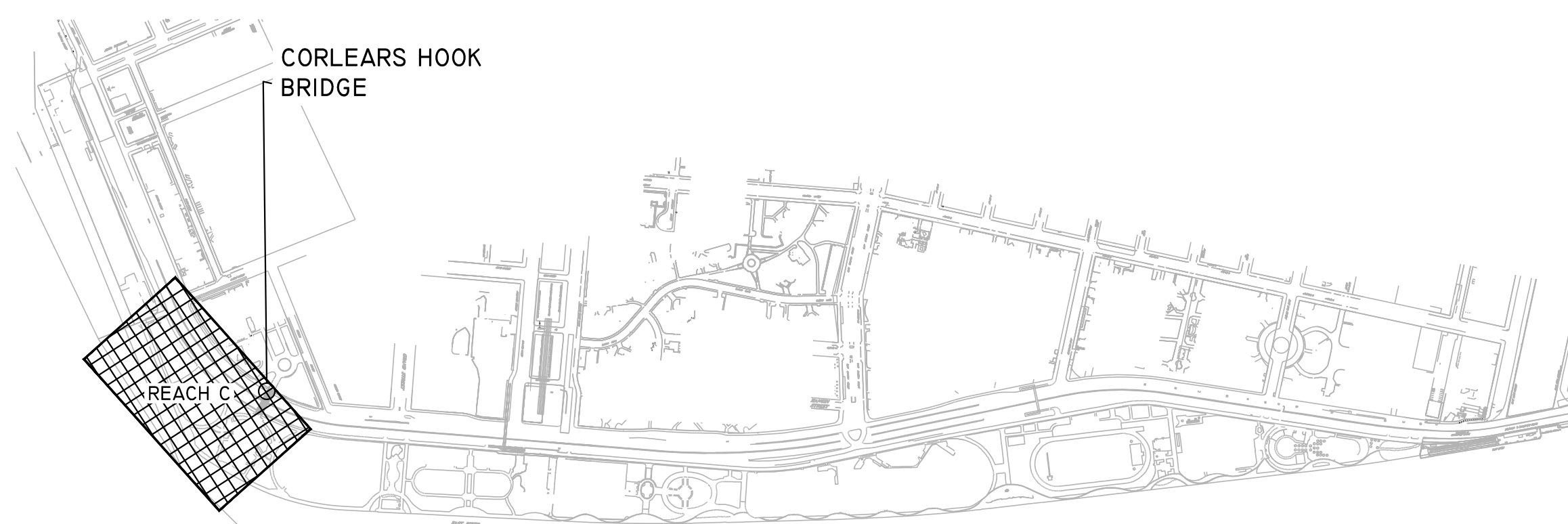
CAPITAL PROJECT NO. SANDRESM1 2/21/20 SHEET 2651 OF 2791 TC101

SANDRESM1 BIDDABLE PACKAGE 2/21/2020



NOTES:

1. ALL ITEMS CALLED OUT AS EXISTING ARE TO REMAIN UNLESS NOTED OTHERWISE.
2. FOR REGULATOR STRENGTHENING, AND MODIFICATION SCHEDULE SEE SHEETS DS110 THROUGH DS111.
3. FOR MANHOLE FLOOD PROOFING DETAILS SEE SHEETS DS701 THROUGH DS702.
4. FOR UTILITY CROSSING ID SCHEDULE SEE SHEETS F710-F711.
5. SEE LANDSCAPE DRAWINGS FOR ADDITIONAL PARK RESTORATION AND IMPROVEMENT PLANS.
6. PARK DRAINAGE COLLECTOR PIPE(S) TO ENTER THE REGULATOR STRUCTURE TIDE GATE CHAMBER ON THE OFFSHORE SIDE OF THE TIDE GATE. REFER TO SHEETS PUD300-PUD309 FOR PARK DRAINAGE PLAN.
7. FOR MANHOLE FLOOD PROOFING SCHEDULE SEE SHEETS DS703 THROUGH DS704.
8. FOR PROFILES OF SEWERS TO BE REPAIR/PROPOSED/REPLACED, SEE SHEETS DS400 THROUGH DS423.
9. CONTRACTOR SHALL PROTECT IN-PLACE ANY SHEET HARDWARE WITHIN TWO (2) FEET OF THE EDGE OF NEW PAVEMENT UNLESS OTHERWISE NOTED.
10. FOR WATERFRONT GENERAL PLANS SEE SHEETS WS302 THROUGH WS307.
11. ALL STEEL PILES FOR NEW DEP SEWER LINES AND STRUCTURES ARE COVERED BY ITEM NO. 70.11SH. CONCRETE AND STEEL REINFORCEMENT FOR PILE BENTS ARE COVERED BY ITEM NO. 73.21AC AND 73.51AS. CONCRETE AND STEEL REINFORCEMENT FOR NEW DEP SEWERS ARE COVERED UNDER THE ITEM NUMBER LISTED FOR THAT SEWER.
12. FOR SOIL IMPROVEMENT AND MITIGATION PLANS, SEE SHEETS SM302 THROUGH SM310.
13. THE CONTRACTOR SHALL NOTIFY NYCDEP BWT OPERATIONS PRIOR TO ANY WORK RELATED TO REGULATORS, JUNCTION CHAMBERS, OUTFALLS AND OTHER ASSOCIATED FEATURES.
14. FOR TYPE R MANHOLE DETAILS SEE SHEET DS706 FOR MANHOLES AT SEWER POINTS OF INTERSECTION, DS707 FOR MANHOLES ALONG STRAIGHT SEGMENTS, AND DS708 FOR MANHOLES WITH PARK DRAINAGE CONNECTIONS.



LEGEND:

- | | | | |
|-------------|--------------------------------|-----|---|
| INT. SWR. | INTERCEPTOR SEWER | — | PROPOSED COMB. SEWER |
| STORM | STORM SEWER | ▨ | DEP SEWER REGULATOR STRUCTURE TO BE FLOODPROOFED |
| VCP | VITREOUS CLAY PIPE | --- | LIMIT OF WORK |
| RCP | REINFORCED CONCRETE PIPE | ○ | EXISTING MANHOLE TO BE FLOODPROOFED. SEE SHEETS DS701-DS702 |
| RCFT | REINFORCED CONCRETE (FLAT TOP) | ○ | PROPOSED MANHOLE RISER |
| COMB. SEWER | COMBINED SEWER | | |
| UKN | UNKNOWN MATERIAL | | |
| INACC | MANHOLE WAS INACCESSIBLE | | |
| CSO | COMBINED SEWER OVERFLOW | | |
| SWO | STORM WATER OUTFALL | | |

MANHOLE LOCATIONS

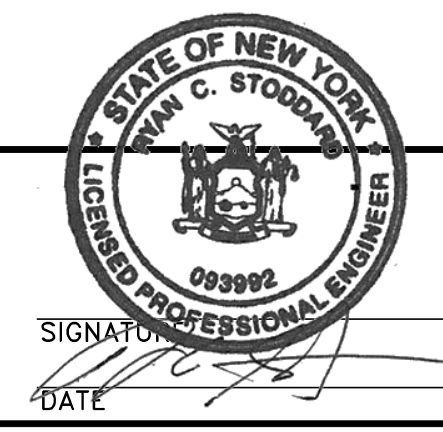
MANHOLE ID	TYPE	NORTHING	EASTING	RIM	INV.	ITEM NO.
MH-C01	FLOODPROOF	8812.49	-1771.28	UNKNOWN	UNKNOWN	51.22RM.C01
MH-C02	FLOODPROOF	8935.69	-1632.04	13.40	-4.60	51.22RM.C02
MH-C03	CONNECTION	9256.59	-1485.66	15.36	-1.22	51.11V000
MH-C04	TYPE-R	9179.00	-1465.61	21.75	-1.28	51.21S0C2060C

NO.	DATE	DESCRIPTIONS	BY	APPR'D
2	7-27-20	UPDATED DRAWINGS	ARCADIS	
1	7-9-20	UPDATED DRAWINGS	ARCADIS	

FINAL DESIGN SUBMITTED BY:

FINAL DESIGN PREPARED BY:

 ARCADIS OF NEW YORK, INC.
 NAME OF CONSULTANT

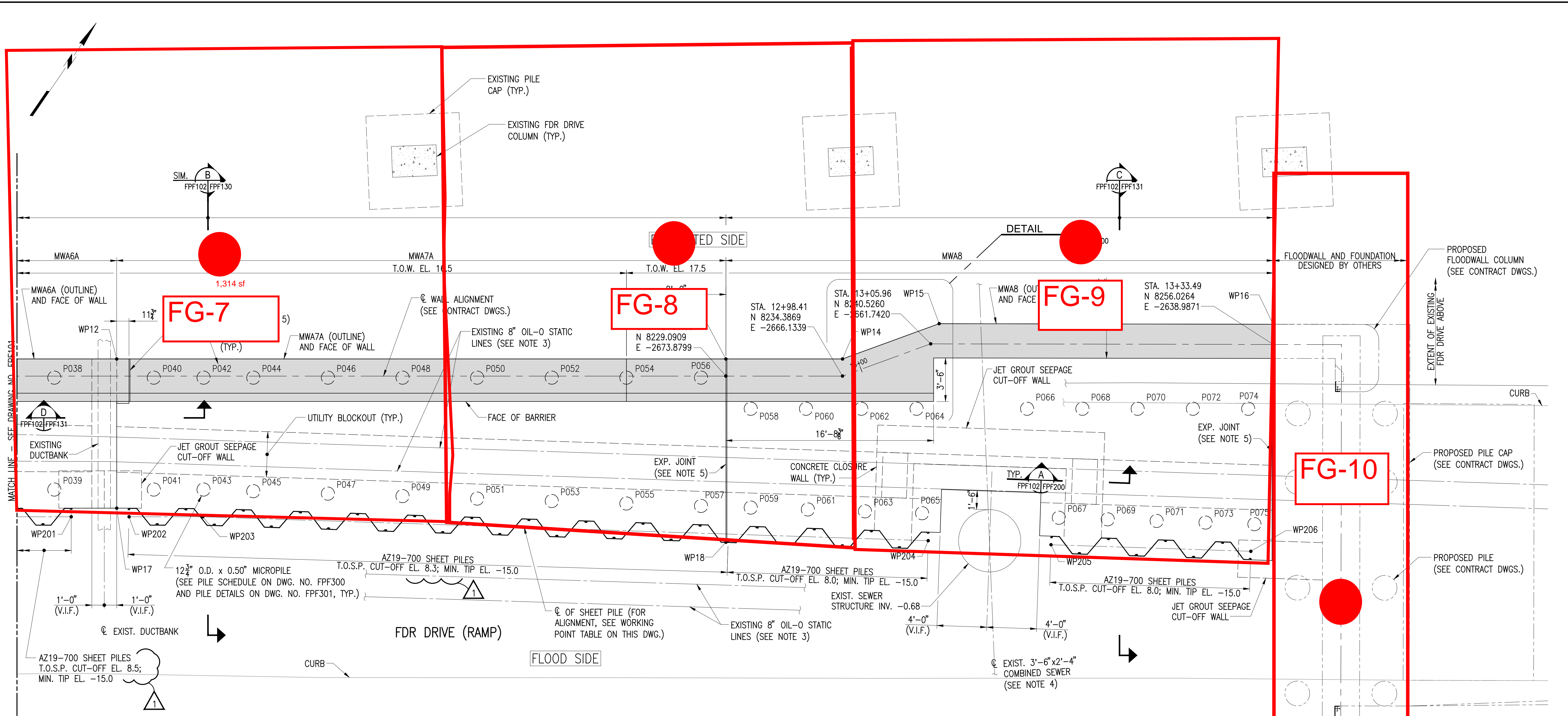


CITY OF NEW YORK
 DEPARTMENT OF DESIGN + CONSTRUCTION
 DIVISION OF INFRASTRUCTURE
 BUREAU OF DESIGN

DEP SEWER PLAN
 SEGMENT 1 - REACH C
 STA. 23+82 - 30+44
 SANDRESM1-DS302-00.DWG
 CADD FILE

INSTALLATION OF
 EAST SIDE COASTAL RESILIENCY
 BOROUGH OF MANHATTAN
 CAPITAL PROJECT NO. SANDRESM1 2/21/20
 SHEET 1189 OF 2791
 DS302

FOR BID
 SUBMITTED DATE: 2/21/2020



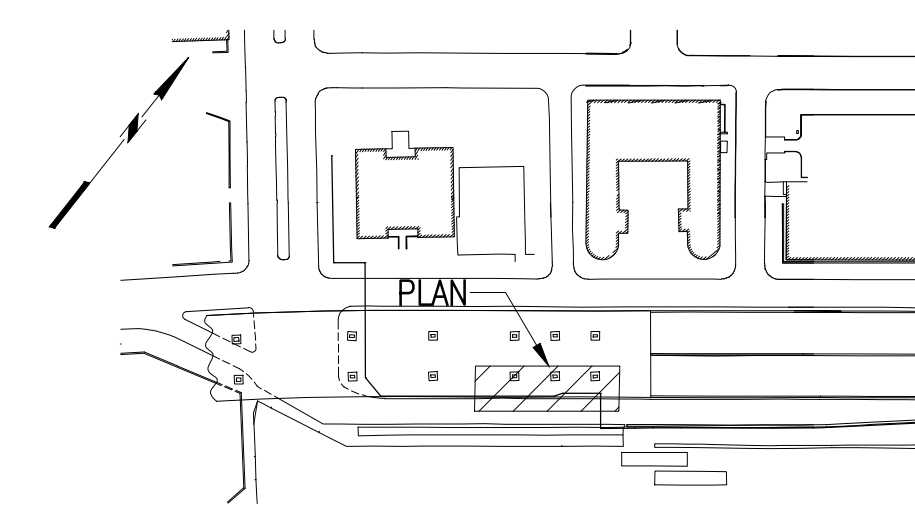
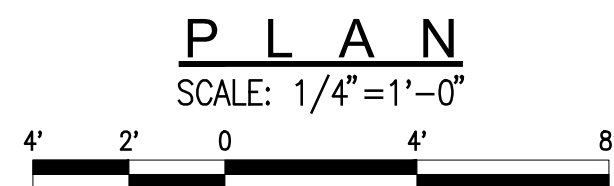
NOTES:

- FOR GENERAL NOTES, SEE DRAWING NOS. FPF001 AND FPF002.
- ONLY KNOWN UTILITIES ARE IDENTIFIED ON THESE DRAWINGS.
- OIL-O STATIC LINE LOCATIONS SHOWN ARE BASED ON IPC SKETCHES FOR FIELD TEST PITS 1, 2 AND 3 DATED MARCH 28, 2022, MARCH 30, 2022, AND MARCH 31, 2022 RESPECTIVELY, AND TEST PIT LOCATION PLAN DATED APRIL 1, 2022. OIL-O STATIC LINE LOCATION SOUTH OF TEST PIT 1 ARE PROJECTED. PRIOR TO START OF WORK, FIELD SURVEYED LOCATIONS OF EXISTING UTILITIES SHALL BE SUBMITTED FOR REVIEW.
- PRIOR TO START OF WORK, SURVEYED LOCATIONS OF SEWER AND MANHOLE SHALL BE SUBMITTED FOR REVIEW.
- FOR TYPICAL EXPANSION JOINT DETAILS, SEE DRAWING NO. FPF200.

LEGEND:

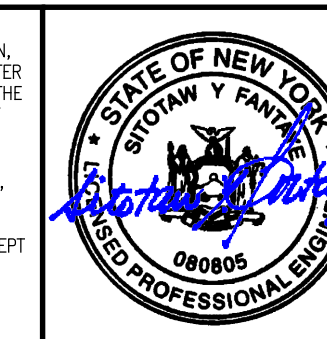
MWA - MONOLITH PILE CAP

PILE CAP WORKING POINT COORDINATE TABLE		
WORKING POINT DESIGNATION	NORTHING	EASTING
WP12	8202.5834	-2715.0863
WP13	8230.2285	-2674.6522
WP14	8235.5219	-2666.9100
WP15	8242.2511	-2662.0959
WP16	8257.3668	-2639.9059
WP17	8192.6834	-2708.3176
WP18	8218.0740	-2666.3421
WP201	8190.0472	-2710.9511
WP202	8192.6745	-2707.1085
WP203	8196.0153	-2702.2221
WP204	8227.3544	-2652.9825
WP205	8232.6611	-2644.6448
WP206	8241.2929	-2631.0826



KEY PLAN

WARNING: IT IS A VIOLATION OF THE NEW YORK STATE EDUCATION LAW FOR ANY PERSON, UNLESS ACTING UNDER THE DIRECTION OF A LICENSED PROFESSIONAL ENGINEER, TO ALTER ANY ITEM ON THESE PLANS IN ANY WAY. IF ALTERATIONS TO THESE PLANS ARE MADE, THE ALTERATIONS SHALL BE MADE IN ACCORDANCE WITH ARTICLE 145 - SECTION 7209.2 OF THE NEW YORK STATE EDUCATION LAW.



1	01-18-23	A.C.	REVISED T.O.S.P. CUT-OFF ELEVATIONS
REV.	DATE	BY	DESCRIPTION
NYC DDC EAST SIDE COASTAL RESILIENCY NEW YORK NEW YORK			
IPC RESILIENCY PARTNERS WHITESTONE NEW YORK			
MUESER RUTLEDGE CONSULTING ENGINEERS 14 PENN PLAZA - 225 W. 34TH STREET, NY, NY 10122			
SCALE AS NOTED	MADE BY: E.D. CH'KD BY: A.C.	DATE: 10-25-2022 DATE: 10-25-2022	FILE NUMBER 14378 DRAWING NUMBER FPF102
ALTERNATE FOUNDATION ENLARGED PLAN SHEET 2 OF 2			

C:\DWG\14378\14378\FPF102.dwg