



PROJECT MED645

INSTALLATION OF DISTRIBUTION WATER MAIN VARIOUS LOCATIONS BOROUGH OF MANHATTAN

COMMUNITY BOARD 6 PROJECT PRESENTATION OCTOBER 7, 2024

Eric Adams
Mayor

Thomas Foley, P.E., CCM, DBIA, NAC
Commissioner

Eric Macfarlane, P.E., M.ASCE, NAC, ENV-SP
First Deputy Commissioner

Thomas Wynne, P.E.
Deputy Commissioner

Ali Mallick, P.E.
Associate Commissioner

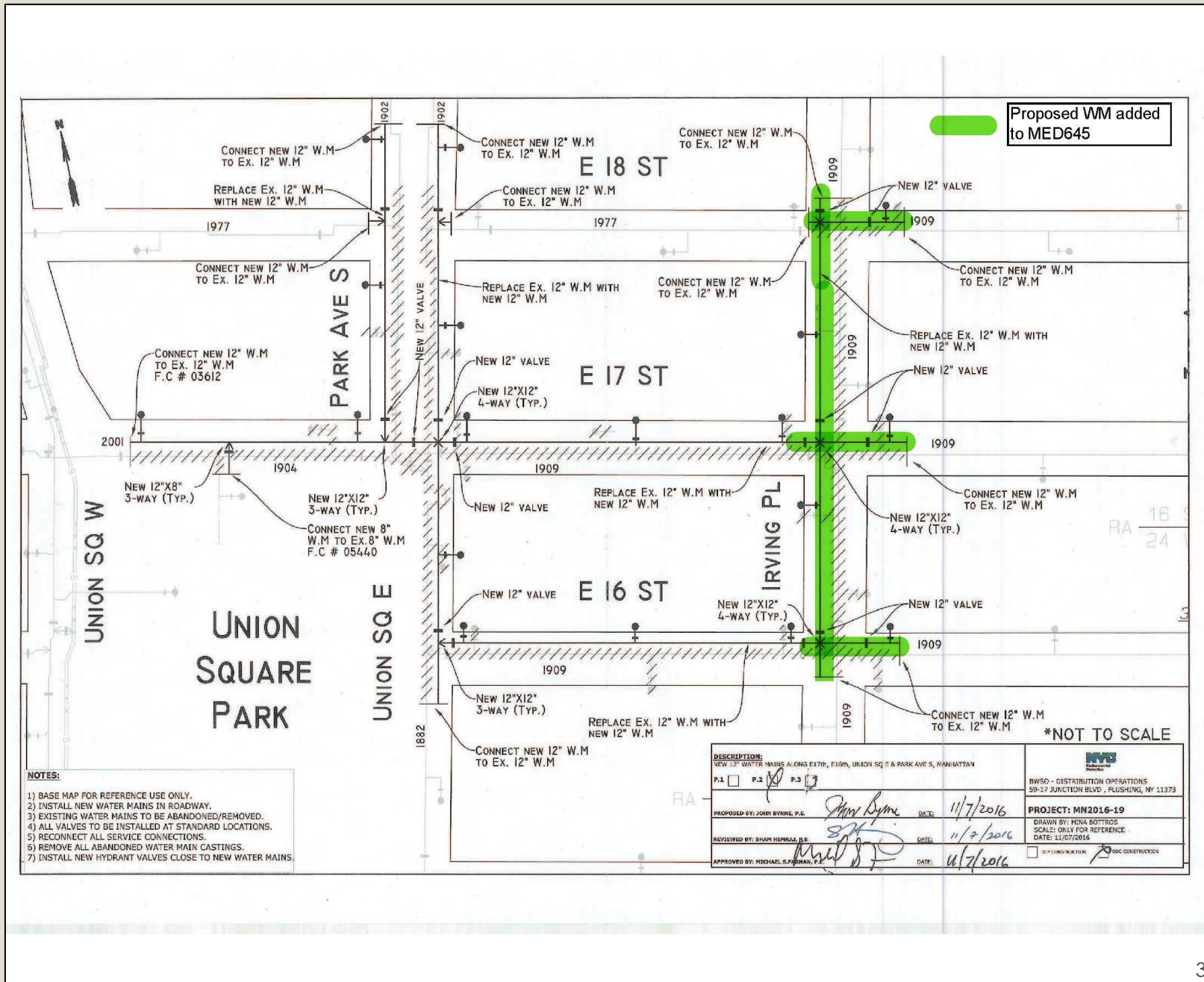
Walkman Wong, P.E.
Assistant Commissioner

Agenda

- About the Project.
- Introduction and Construction Overview.
- Water Shutdown Advisories, Construction Bulletin Samples and Quarterly Newsletter.
- Storage Areas, Public Spaces, and Community Outreach.

Project's Location:

E. 16th Street to
E. 18th Street on
Irving Place



How Will This Project Benefit You?

- The new roadways will be safer and more reliable.
- The installation of a new water main will ensure a safe and dependable water supply that can meet the community's needs.
- It will improve the water quality in the area.



Pictures of Old Water Main



Project's Timeline

- The project is anticipated to start in the Fall 2024.
- The estimated completion for this Project is Winter 2025.
- The contractor (Judlau, Inc.) is working on obtaining construction permits.
- The CCL continues to perform outreach activities.



What Are The Anticipated Impacts?

- Street parking will be interrupted until the duration of the project.
- There will be water service test interruption to find out the condition of water main valves.
- There will be water service interruption to remove and install the water main.
- There will be test pit activities to find out the location of the water main and possible utility interferences.
- Outdoor dining needs to be removed once construction starts, per NYCDOT.
- The CCL will inform stakeholders and businesses beforehand.

How Will Water Service Interruptions Affect The Community

- The CCL will inform the community that there will be no water service.
- The CCL will proactively send a 72-hour and a 24-hour water service interruption advisory, ensuring stakeholders have ample time to prepare.
- The CCL will distribute the advisory to all stakeholders and businesses in the area impacted informing the date and time of the service interruption.
- The contractor will distribute a Water Shut-Off Notice with contact information from the Resident Engineer and CCL.
- Once water services are back on, the CCL will send a Water Restoration E-Mail to all stakeholders and businesses affected.

Samples of Notices

COMMUNITY ADVISORY

PROJECT NAME: Installation of Distribution Water Main Various Locations
PROJECT#: MED645 BOROUGH: Manhattan ADVISORY ISSUED: Monday, March 4, 2024

Water Shutdown 3/7/24 at 10:00 pm until 3/8/24 5:00 am

On 5th Avenue between W. 14th Street to W. 18th Street

Starting at 10:00 pm for Approximately 7 hours

This water shutdown is necessary to install a 12-inch water main at this location. Once the shutdown is completed, DEP will restore the water service. The shutdown will occur at, or about 10:00 pm for up to 7 hours.

If you have any questions, concerns, or would like to learn more about this DDC Project, please call the Community Construction Liaison:

Sayda Noboa-Torres
Community Construction Liaison
84 Bowery 6th Floor
New York, NY. 10013
email: MED645ccl@gmail.com
cell: (929) 332-5335
office: (646) 873-4912

During non-construction hours please contact 311 for non-emergency city services.

PLEASE NOTE: Due to unforeseen conditions (weather, field conditions, etc) it may become necessary to change some scheduled work locations and operations.

Handling a temporary water shutdown

The NYC Department of Design and Construction (DDC) installs and repairs the underground pipes that deliver water in New York City. Some pipes are over 100 years old and need to be replaced. New types of pipes are more resistant to cracks and breaks. They will safely deliver high-quality water for decades to come.

To do this essential work, we have to temporarily turn off your water.

Your water will be turned back on at the end of each work shift.

BEFORE THE WATER SHUTDOWN

- Store water for cooking, cleaning, and other needs
- Shut off the water main valve in your house or building to prevent plumbing problems, including brown water from sediments (or ask your landlord or super to do so)
- Turn off water-cooled systems such as central air and heating

ONCE THE WATER IS BACK ON

- Turn on the building's water main valve (or ask your landlord or super to do so)
- Run all sink and tub faucets for 15-30 minutes to flush the plumbing

QUESTIONS OR CONCERNS?

If you have any concerns or questions, or would like to receive updates, please contact this project's dedicated **Community Construction Liaison**. If you will be uniquely impacted by this work, you may request a special accommodation, if possible.

Sayda Noboa-Torres (CCL)
84 Bowery 6th Floor
New York, NY. 10013
O: (646)873-4912
C: (929)332-5335
E: med645ccl@gmail.com

ADDITIONAL INFORMATION

During non-construction hours, please call 311.

Please be advised, the water main installation is being performed on behalf of the sponsoring agency, NYC Department of Environmental Protection (DEP). If you have questions about water quality, please contact DEP.

Samples of Water Shut-Off Notice



WATER SHUT OFF NOTICE

ATTENTION:

THE WATER IN THIS BUILDING WILL BE SHUT OFF DUE TO CONSTRUCTION

CONSTRUCTION DATE(S): 04/02/2021

SHUT OFF TIMES: 1:00 AM up to 7 Hours

PROJECT #: MED645 DDC FIELD OFFICE PHONE: 646-723-9931

RESIDENT ENGINEER: Ernest Valcourt CELL PHONE: 917-642-2534

COMMUNITY CONSTRUCTION LIAISON: Sayda Noboa-Torres CELL PHONE: 929-332-5335

PRE-CONSTRUCTION INSTRUCTIONS (HOMEOWNERS / SUPERINTENDENTS)

- Shut off the main house valve. Shutting off the main water valve in your house/building will help avoid problems that may occur if sediment enters or releases from your plumbing.
- Open one hot water faucet above the hot water heater.
- Shut off all appliances that require cooled water, such as some air conditioners.
- Check to make sure there is a sufficient amount of water in the steam boiler.
- Store enough water for ALL household uses.

POSSIBLE WATER SHUT OFF IMPACTS (RESIDENTS)

Discolored Water
If your water looks brown or yellow, this discoloration is a temporary condition and does not indicate the presence of harmful contaminants. However, don't drink or cook with discolored water and run the faucet until clear and cold.

Chlorine Odor
Water may have the odor of chlorine due to the pipe cleaning process used during water main work. This will dissipate over time.

Low Pressure
You may experience low pressure once water is turned back on. You may need to clean your aerator or sediment, or replace the water filter in your refrigerator. Contact DDC's Field Office in the morning if the problem persists.

Open Fire Hydrants
You may notice fire hydrants open and running. This is done to flush the system. They may occasionally be left running overnight. Unless there is a flooding condition, there is no need to report it.

IF YOUR WATER SERVICE DOES NOT COME BACK ON:

- Make sure the water main valve for your house/building has been turned back on. If you live in a multi-family home or apartment building, check with your building supervisor.
- There may be a delay in returning water service. Check if neighbors have water. If not, crews may still be working in the neighborhood.
- Turn on a faucet and listen for rushing air. If you hear rushing air, leave the faucet on and water should start running soon.
- Contact the DDC Field Office at the number listed on this notice.

New York City's water is virtually lead-free when it is delivered from our reservoir system to customers. However, water can absorb lead from service lines and internal plumbing in some buildings and homes. While NYC takes the appropriate steps to reduce the amount of lead that can dissolve from a homeowner's plumbing/service line into their tap water, turning off water service or routine disturbance to the service line during water or sewer main construction may cause temporary increases of lead levels in your water if there is lead in your internal plumbing. As a precaution, we recommend flushing your water if it is discolored for 15 minutes, or until clear.

If you have any questions about NYC's water quality or would like to request a free residential lead test kit, call 311 or visit nyc.gov/dep/leadindinkingwater. More information on the health impacts of lead can be found at www.cdc.gov/nceh/lead/leadinwater/default.htm.

Para una copia en español, visite nyc.gov/watershutoff

中文翻译, 请访问 nyc.gov/watershutoff

Для копии на русском языке, посетите nyc.gov/watershutoff

Pou yon kopi nan lang kreyòl ayisyen, vizite nyc.gov/watershutoff

한국어 복사본이 필요하시면 nyc.gov/watershutoff 를 방문하여 주세요

Dla kopii w języku polskim, odwiedzić nyc.gov/watershutoff

ব্রাহ্মা কপির জনো, অনুগ্রহ করে nyc.gov/watershutoff ওয়েব সাইটে যোগাযোগ করুন

Pour lire ce document en français, visitez nyc.gov/watershutoff

Per una traduzione in italiano, visitate nyc.gov/watershutoff

للحصول على نسخة باللغة العربية، الذهاب الى nyc.gov/watershutoff

ملاحظہ کریں nyc.gov/watershutoff اردو ترجمہ کے لئے

פאר א קאפיע אין יידיש, באזוכן nyc.gov/watershutoff



Sample of The Weekly Construction Bulletin



WEEKLY CONSTRUCTION BULLETIN

09/14/2024 - 09/20/2024

INSTALLATION OF DISTRIBUTION WATER MAIN AT VARIOUS LOCATIONS PROJECT#: MED645 BOROUGH: MANHATTAN DATE ISSUED: 09/13/2024

The following is an anticipated work schedule for the upcoming week. However, unforeseen field and weather conditions may become necessary to change some scheduled work locations, operations, and dates. Please note that "No Parking" restrictions are in effect in the work area.

DATE	WORK HOURS	LOCATION	OPERATION
09-14-24	8:00 am-4:00 pm	The intersection of 10 th Avenue and W. 20 th Street	<ul style="list-style-type: none"> Continue Reinforce Roadway (Con-Edison) (Medium Noise Jackhammer) (Restricted parking-observe signage)
09-16-24 09-20-24	9:00 am-3:30 pm	15 th Street and 5th Avenue Intersection	<ul style="list-style-type: none"> Continue Final Restorations (Medium Noise Jackhammer) (Restricted parking-observe signage)
09-14-24	8:00 am-4:00 pm	E. 29 th Street between Madison Avenue and 5 th Avenue	<ul style="list-style-type: none"> Continue Hand Care Excavations for Water Main and Utilities (Con-Edison and ECS) (Medium Noise Jackhammer) (Restricted parking-observe signage)
09-16-24 09-20-24	7:00 am-3:30 pm	E. 29 th Street between Madison Avenue and 5 th Avenue	<ul style="list-style-type: none"> Hand Care Excavations for Water Main and Utilities (Con-Edison and ECS) (Medium Noise Jackhammer) (Restricted parking-observe signage)

WATER SHUT-OFF NOTIFICATIONS: 72-hour Advisory, prior 24-hour notification will be distributed/posted to any / all affected location(s).

NO PARKING SIGNS: Will be distributed/posted 72 hours before the temporary elimination of street parking. Please observe posted parking regulations in Construction areas.

FOR FURTHER INFORMATION: Contact Sayda Noboa-Torres, the Community Construction Liaison, at (646) 873-4912 or med645ccle@gmail.com

Eric Adams Mayor Thomas Foley, P.E. Commissioner

www.nyc.gov/ddc



Department of
Design and
Construction



Sample of

The Quarterly

Newsletter

Reconstruction Newsletter



Manhattan

Fourth Quarter 2024

Distribution Water Main in Manhattan, Various Locations
Chelsea/Flatiron/NoMad/Union Square
Project #MED645

The New York City Department of Design and Construction (NYC DDC) continues to manage the multi-location distribution water main installation project, MED645. Work includes, but is not limited to, water main installation at various locations, utility upgrades, and new hydrant installation. This project has an anticipated completion date of Spring 2026.

Work Completed: Third Quarter 2024
Chelsea (The intersection of W.20th Street and 10th Avenue)

The contractor is assisting Con-Edison with roadway reinforcement.

Flatiron District (The Intersection of 15th Street and 5th Avenue)

The contractor is finishing the final restoration on the last lane on 5th Avenue.

NoMad (E. 29th Street b/w Madison and 5th Avenues)

The contractor continues hand-care excavations to expose the water main and any utility interference from Con-Edison and ECS.

Union Square (E. 17th Street and Irving Place)

The contractor is obtaining construction permits, and CCL is performing outreach activities. Construction has yet to commence.

Proposed Work Schedule: Fourth Quarter 2024

In the Chelsea location, final restoration operations will continue. In the Flatiron location, final restorations and removal of storage fences are scheduled. In NoMad, the contractor will continue hand care excavation operations.



Final restorations on 5th Avenue between E. 15th Street and E. 16th Street.

Accommodation for individuals with Disabilities - If this project may uniquely impact you or someone you know, please contact the project CCL and/or RE as soon as possible to inform them of your situation or concern.



Hand care excavations on E. 29th Street between Madison Avenue and 5th Avenue.

Water Service Interruptions

Service interruptions will occur during the project. To allow for water main replacement, the existing water service must be shut off by closing the valves at either end of the section. Advanced notice will be given for all planned interruptions. Water service will be restored at the end of the night.

Community Impacts

During construction hours, you can expect increased levels of dust, noise, heavy equipment, and vehicular travel lane closures and detours. Advisories will be posted for all parking and driveway/loading dock restrictions within the affected areas. Emergency vehicle access and pedestrian access to sidewalks and buildings will always be maintained.

Trash Collection

Proper trash collection can be a challenge on a large project, but with everyone's cooperation, it can be managed with a modicum of disruption. Please pack your trash properly to avoid easy breakage and/or spillover. Please put it in the designated areas as close to collection time. If you use a private carter, ensure your trash collection occurs in a timely fashion. If you aren't sure where to bring your trash, please get in touch with the CCL.

Community Construction Liaison (CCL)

The DDC has assigned **Sayda Noboa-Torres** as the Community Construction Liaison (CCL) for this project. Please get in touch with the CCL for any project-related inquiries/concerns you may have:

Phone: 646-873-4912 **Cell:** 929-332-5335

Email: med645ccl@gmail.com

Field Office: 84 Bowery, New York, NY, 10013

Office Hours: Mon-Fri 7:00 am-3:30 pm

DDC Video:

<https://www.nyc.gov/site/ddc/projects/videos.page>

Newsletter Distribution

Reconstruction newsletters are distributed within the project areas and to Manhattan's Community Board #4, #5 and #6.

Eric Adams
Mayor

Thomas Foley, P.E.
Commissioner

DDC Website
www.nyc.gov/ddc

Twitter
twitter.com/nycddc

Storage Area

- The storage area is designed to keep construction materials and heavy equipment safely away from pedestrians.
- The Department of Transportation (DOT) determines the location and size of the storage area.
- The Contractor will maintain the storage area clean.
- The Contractor will install baits for pest control.



How Will Construction Activities Impact Traffic and Parking?

- All contract work is done within NYCDOT permit stipulations.
- As needed, the CCL will distribute Curbside Parking and/or Sidewalk Access Restriction advisories to the affected area.
- The restrictions will be in effect depending on how construction progresses.
- Crossing Guards/Flaggers will be present to assist pedestrian flow.

Tree Guards

- Tree Guards will be installed and maintained for the project's duration or until the project or certain areas are deemed substantially completed.
- Tree Guards are required by NYC Parks Department.
- The contractor will maintain the tree pits free of debris and garbage.
- The contractor will maintain the guards and paint over markings and graffiti.



COMMUNITY OUTREACH

DCC's Office of Community Outreach + Notification (OCON), works with Community Boards, Business Improvement Districts, local businesses and other community stakeholders impacted by construction.

Community Construction Liaison (CCL)

DDC has assigned Sayda Noboa-Torres of Excelsior Engineering Services P.C. as the dedicated on-site Community Construction Liaison (CCL).

The contact information is as follows:

Email: med645ccl@gmail.com

Office Phone: (646) 873-4912

Mobile Phone: (929) 332-5335



Q & A

THANK YOU!