

S. I. Zoo Clove Road Restoration

Project ID: PV175CLOV

614 Broadway Staten Island Zoo
Staten Island, NY 10310

Community Board 1, Staten Island

Presentation Date: 2.6.2024

AOR: nARCHITECTS, PLLC

Consultants: Silman, Collectif, Sam Schwartz, EKLA, Gecko Group, Crystal Mckenzie, Shen Milsom & Wilke, Socotec



NYC Parks



Borough

2 miles 



Neighborhood

1000 FT 



Site

100 FT 



1 Clove Road Entrance showing existing vehicular and pedestrian curb cuts and crosswalk



2 Pedestrian walkway out to Clove Road





1 Service Access (left) and Ticketing Kiosk (right)
See corresponding proposed view on p.17



2 NE edge of Project boundary
See corresponding proposed view on p.18

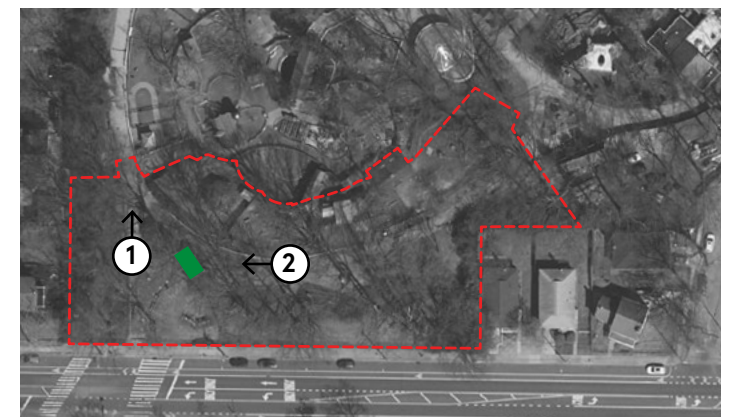




1 Service Access



2 Pedestrian walkway back to Entrance/Exit
Dinosaur Sculptures in buffer along Clove Road (left)
Australian Exhibit (right)



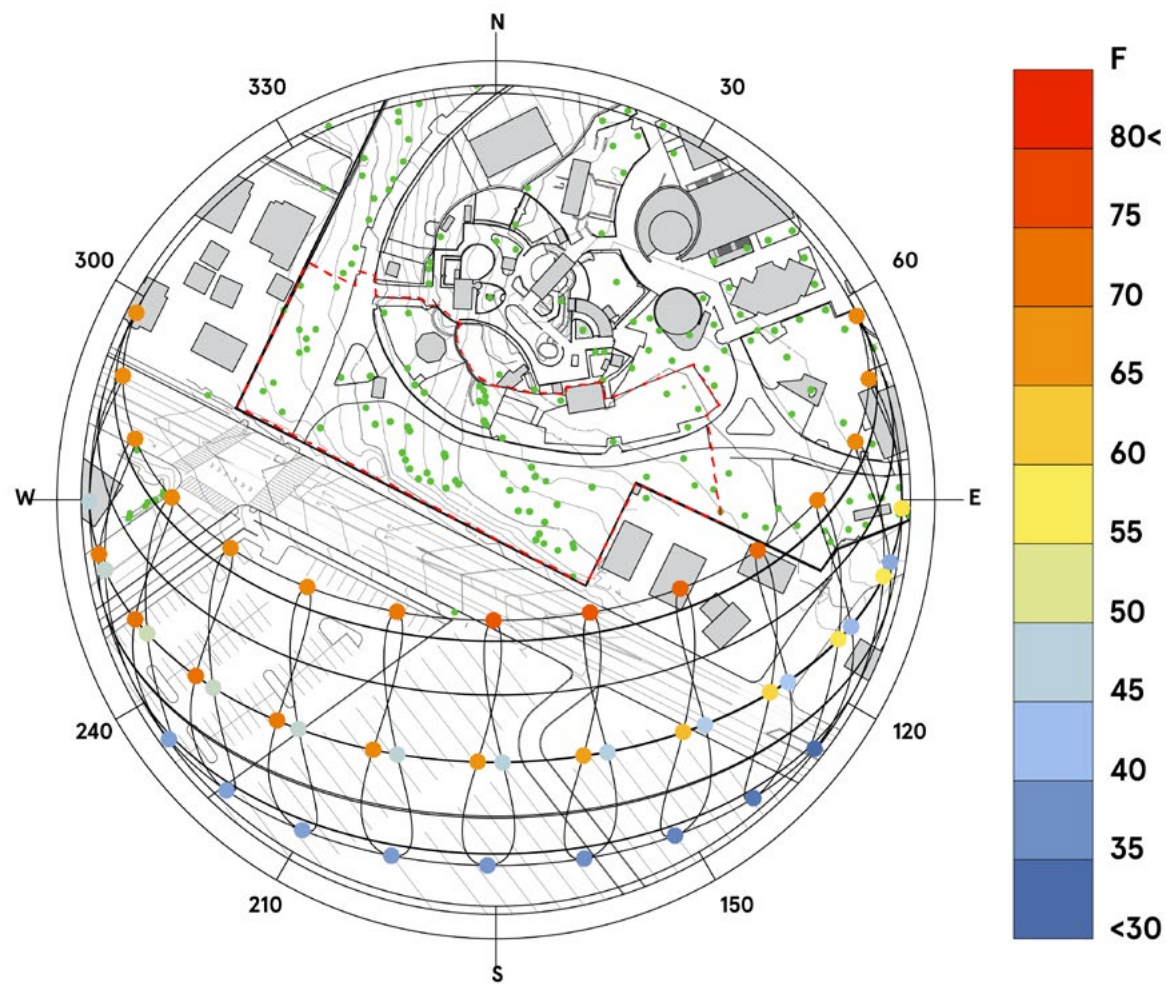


2 Dinosaurs Sculptures in buffer along Clove Road



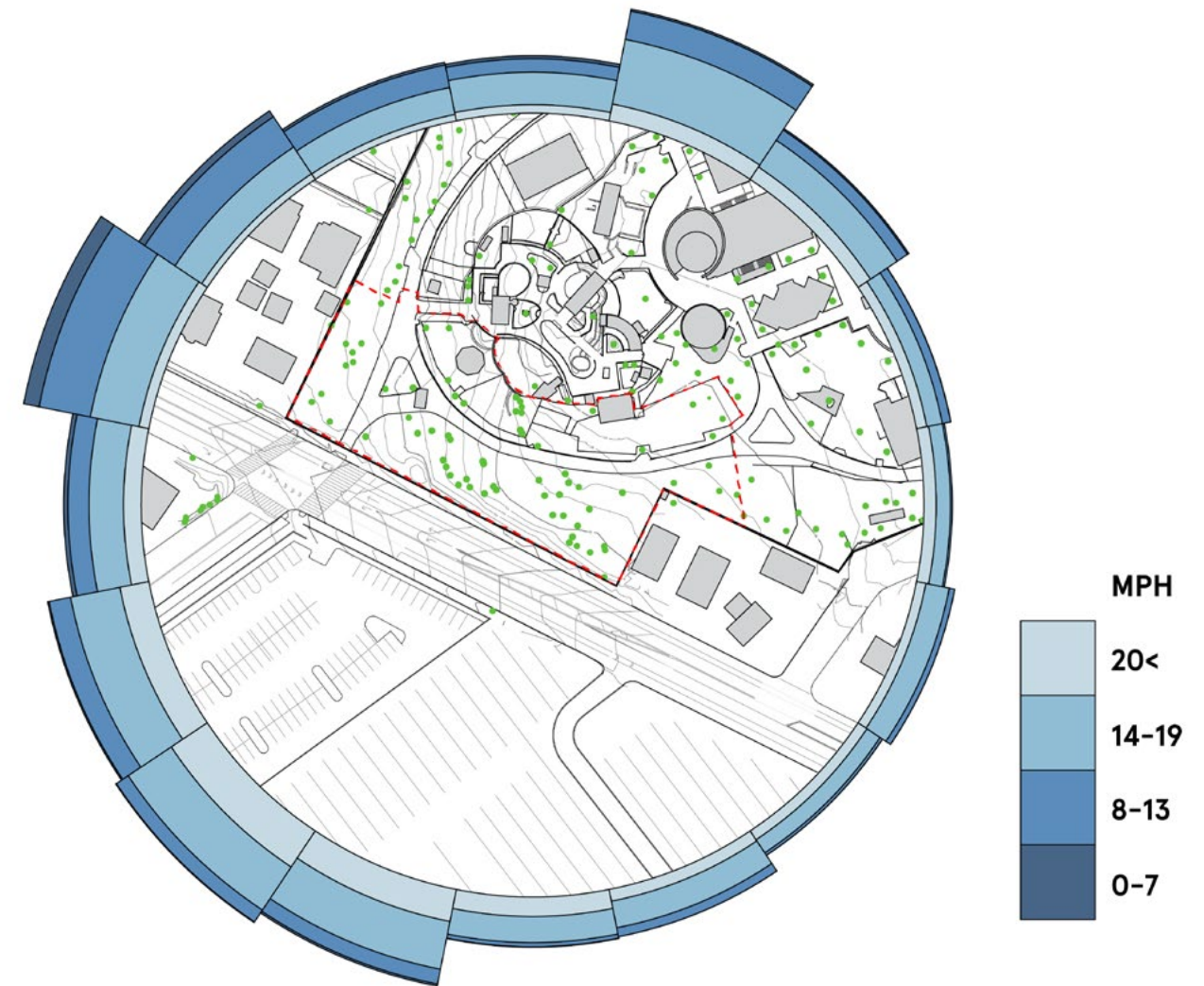
2 Wooded buffer along Clove Road





Sunpath Diagram

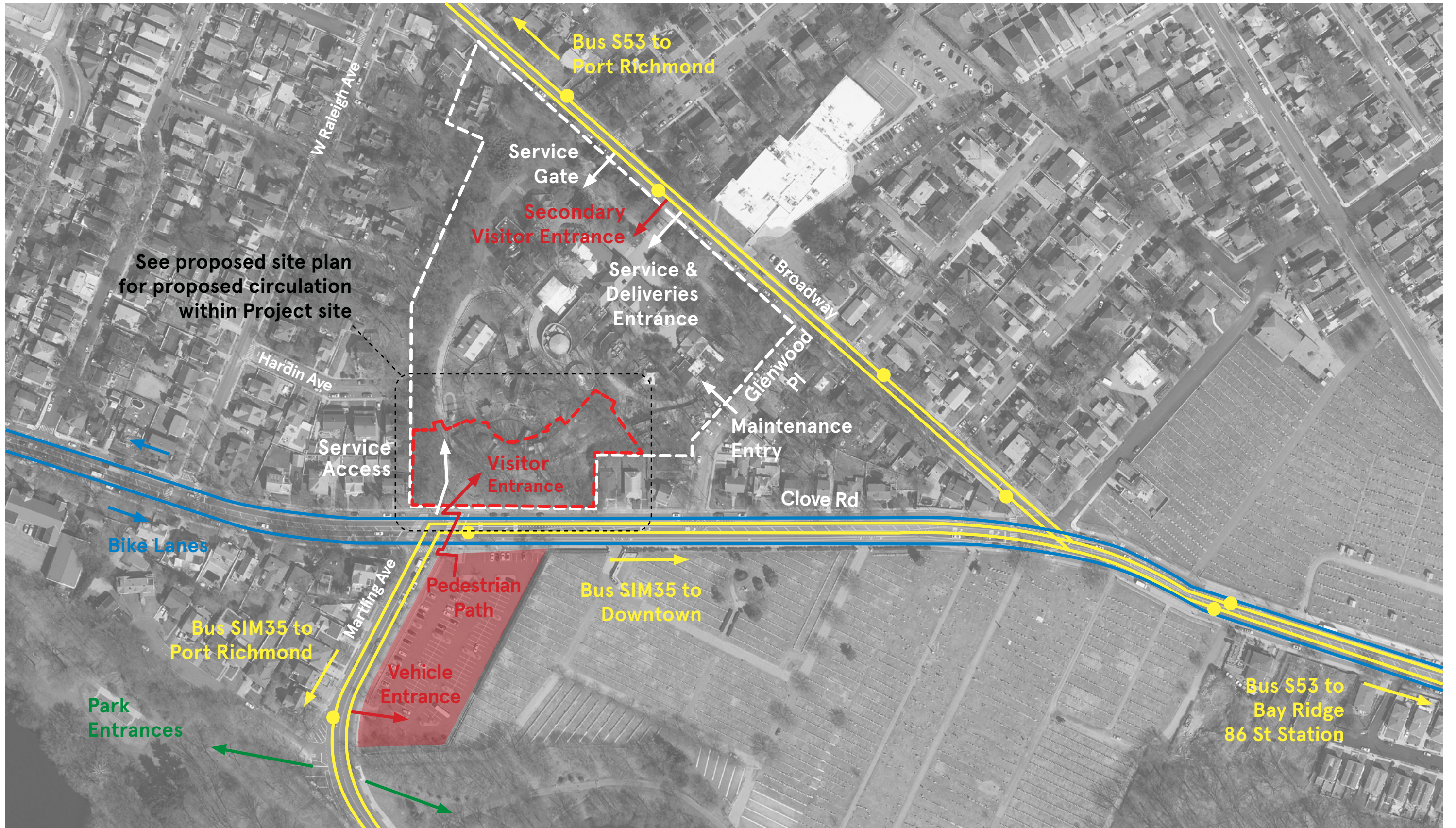
The sunpath diagram shows the solar orientation and average temperature on four days of the year: the Winter Solstice (December 21), the Fall/Spring Equinox (March 21/September 21), and the Summer Solstice (June 21).



Windrose diagram

In this area:

- Winds come predominantly from the Northwest from November to April.
- Winds come predominantly from the Southwest from May to August
- Winds come predominantly from the North-Northeast in September and October.



Exist. trench drains at connection to adjacent paths to be replaced

Exist. animal enclosures (fencing, curbs, walls, etc) & holding structures (Shelter, Shed, Pony Stable) w/in Project Area to be demo'd

Exist. retaining wall

Exist. trees

Exist. Ticketing Kiosk to be demo'd

Exist. fence to stay along west and east edges of project area

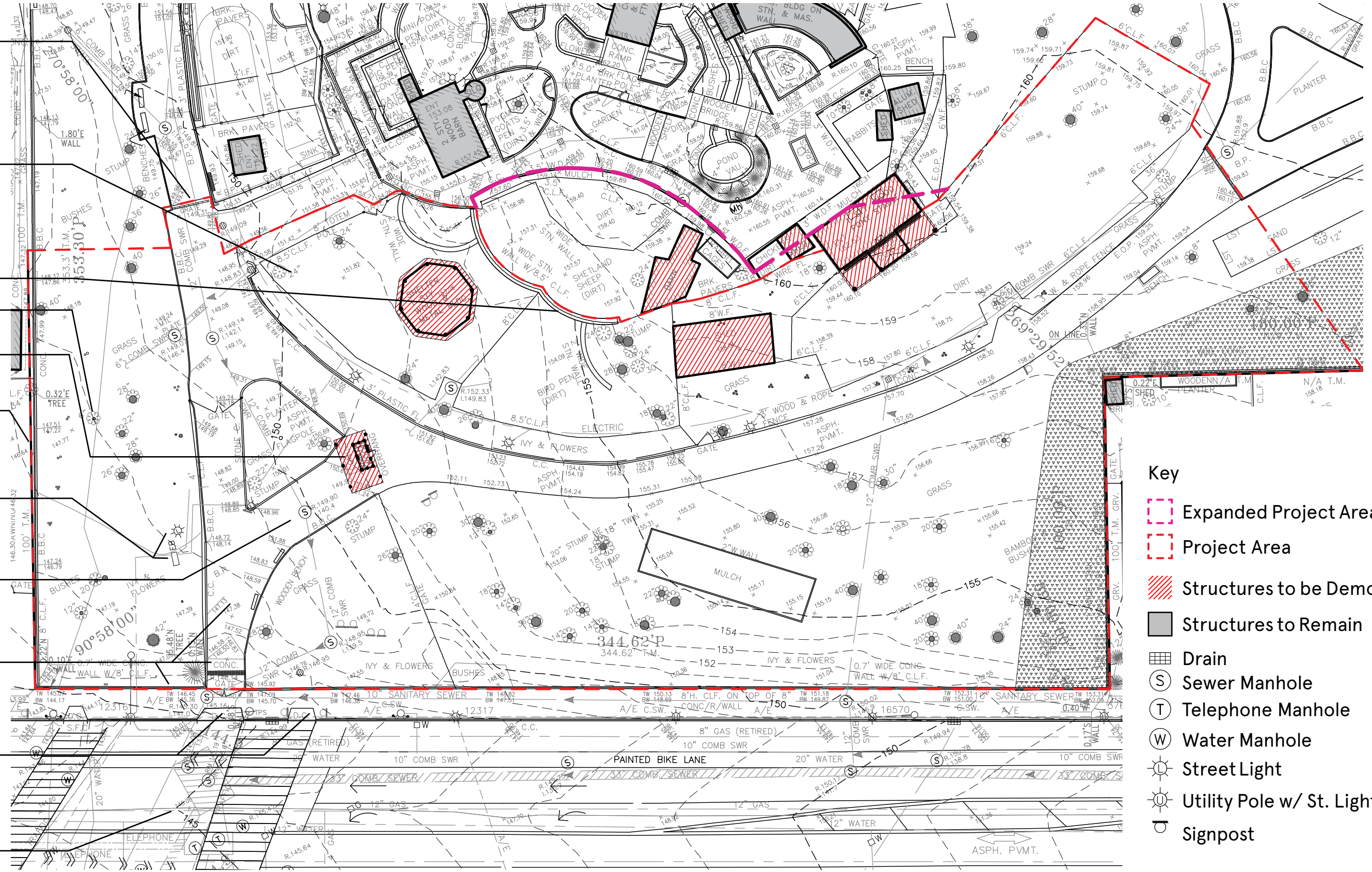
Exist. Service Entrance Box and Photocell Sensor

Exist. Site Infrastructure to reuse, cap, or demo

Area for new fence, entry plaza, ticketing kiosk, service access along Clove Road

Exist. pedestrian and vehicular curb cut locations

Exist. Public Infrastructure



- Key**
- Expanded Project Area
 - Project Area
 - Structures to be Demo'd
 - Structures to Remain
 - Drain
 - S Sewer Manhole
 - T Telephone Manhole
 - W Water Manhole
 - ⊙ Street Light
 - ⊙ Utility Pole w/ St. Light
 - ⊙ Signpost

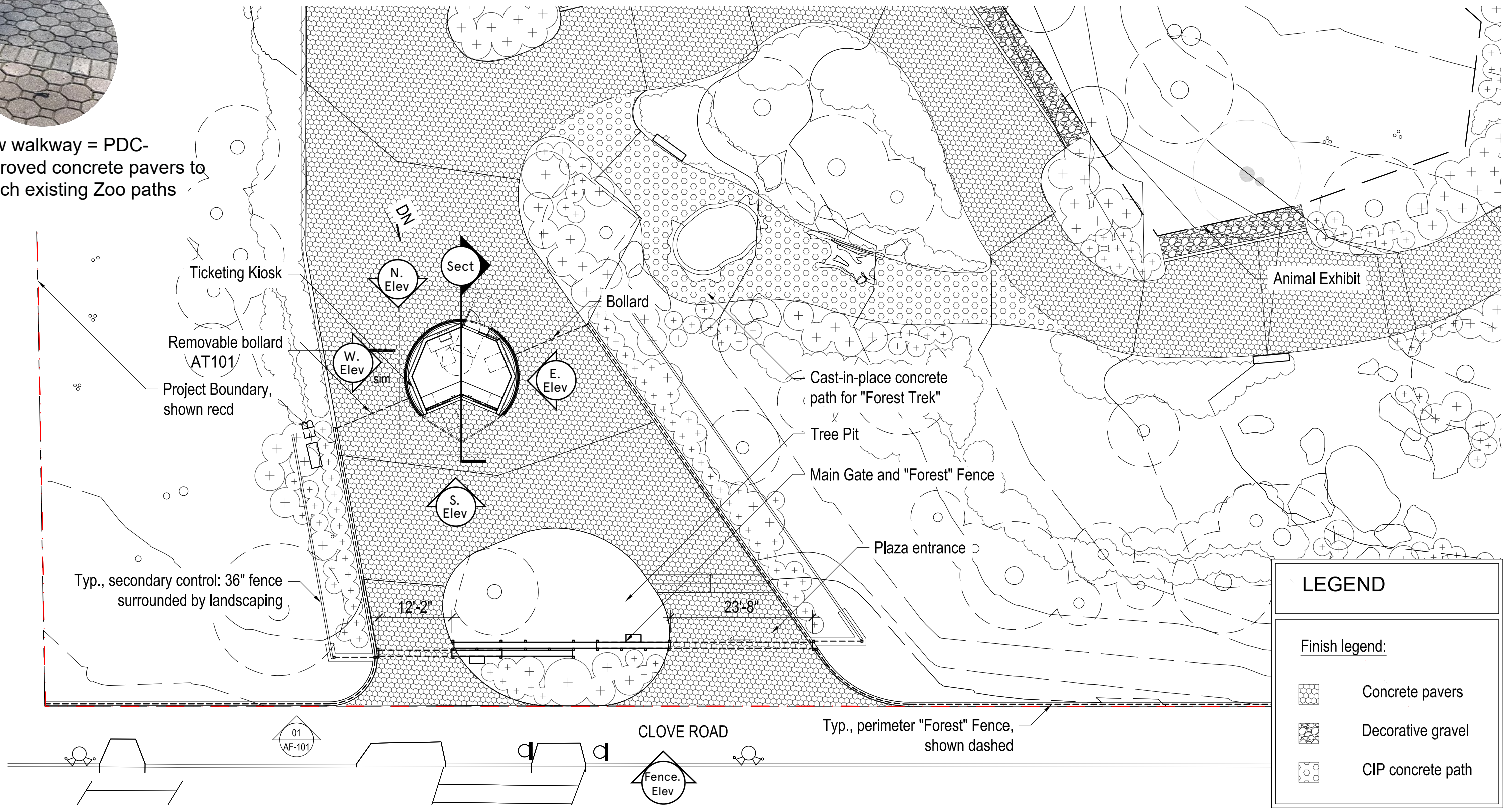






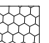
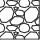



New walkway = PDC-approved concrete pavers to match existing Zoo paths

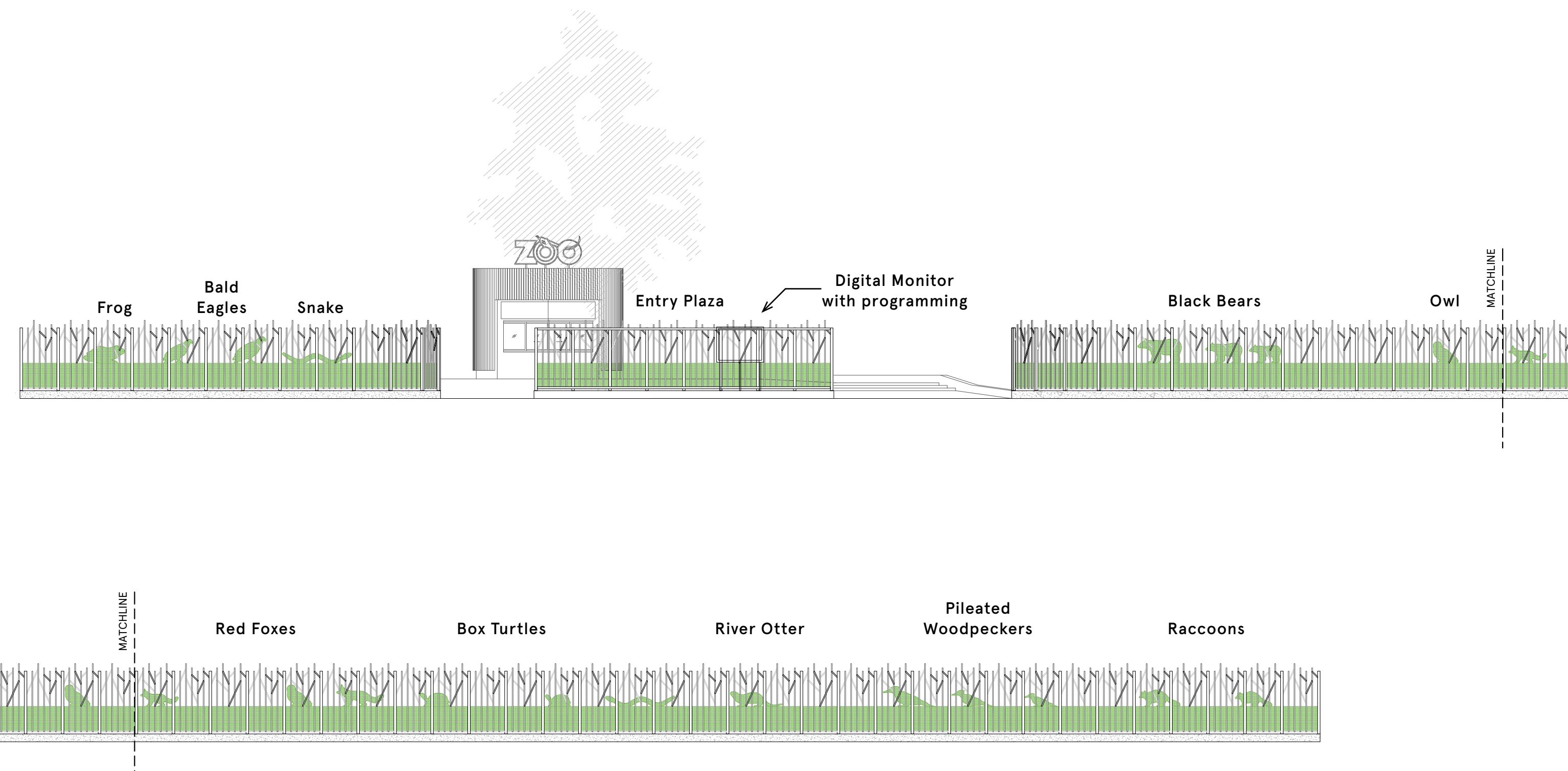


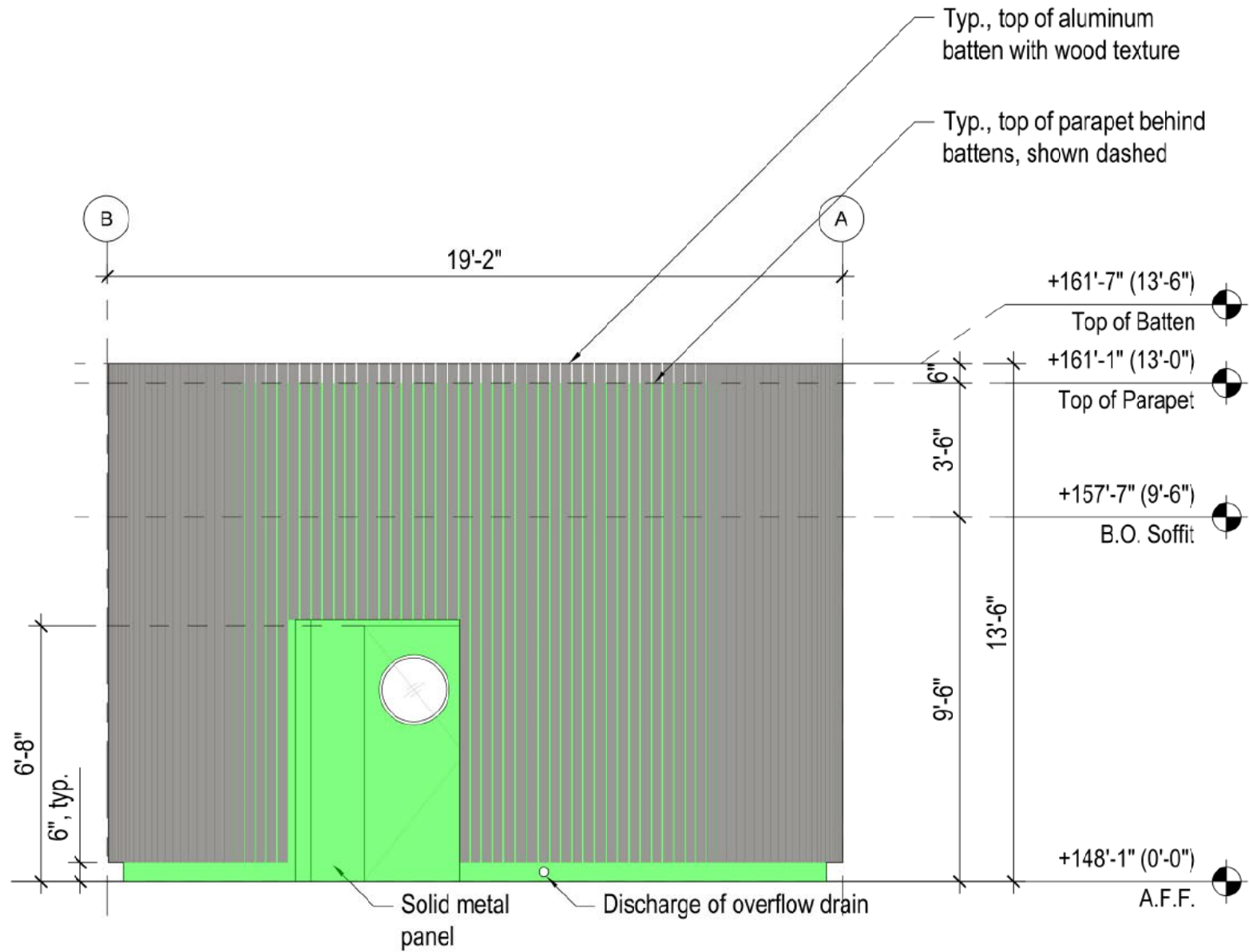
LEGEND

Finish legend:

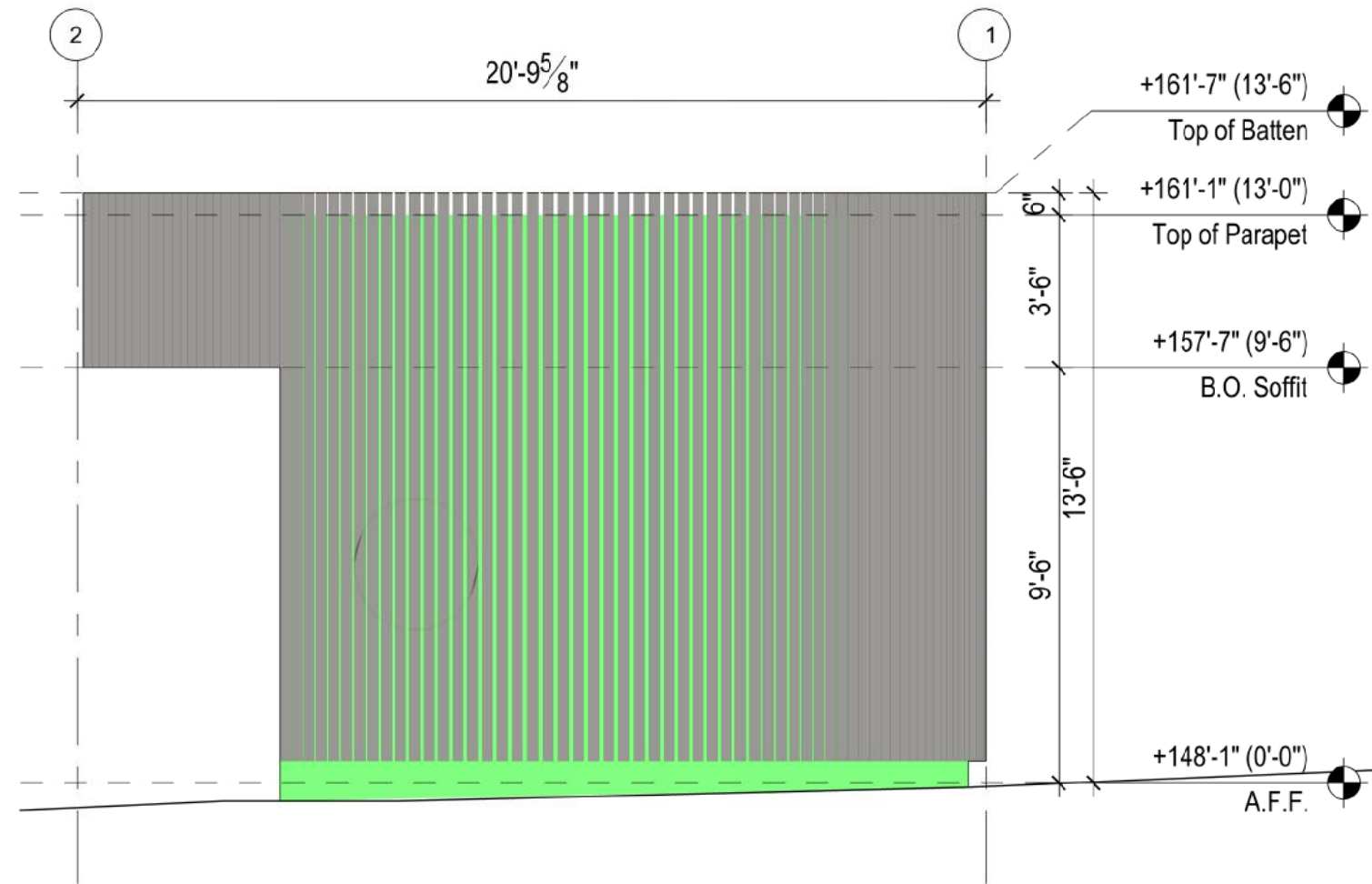
-  Concrete pavers
-  Decorative gravel
-  CIP concrete path



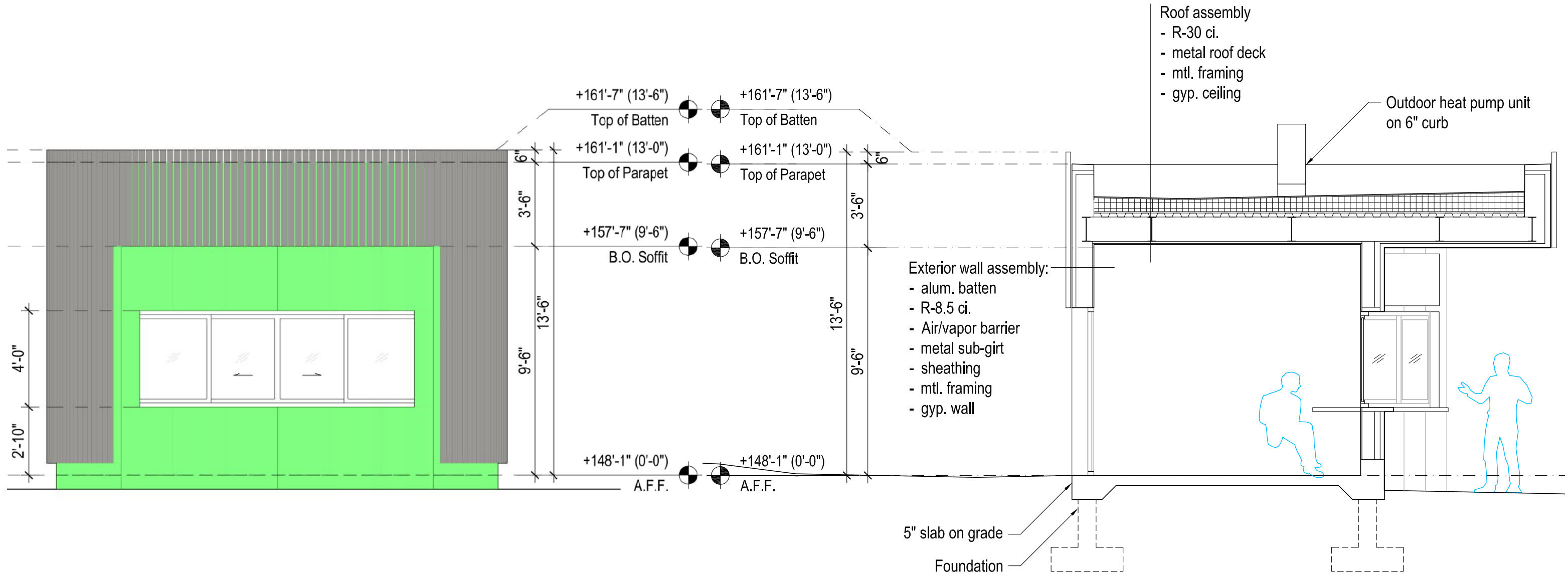




PROPOSED KIOSK NORTH ELEVATION



PROPOSED KIOSK EAST ELEVATION



PROPOSED KIOSK SOUTH ELEVATION

PROPOSED KIOSK SECTION



- ① Fence digital monitor with programming
- ② Kiosk monumental Zoo identity signage
- ③ Kiosk admissions signage



1 Entry Gate at Clove Road



- ① Kiosk monumental Zoo identity signage
- ② Kiosk admissions signage

1 At ticketing kiosk, looking north





- ① Porcupine Exhibit
- ② Porcupine Holding Shelter



1 At Porcupine Exhibit, looking north



- ① Eagle Exhibit
 - ② U-Turn Round
 - ③ Wingspan Interactive
 - ④ Wingspan Interactive
- Note: The Wingspan Interactive has been relocated for clarity. See site plan for proposed orientation.
- ⑤ Owl Exhibit



1 At Eagle Exhibit, looking west

Precedents of Animal Exhibits



Porcupine exhibit at National Zoo, Washington DC



Bald eagles exhibit at Cincinnati Zoo, OH



Great Horned Owl exhibit at ZooMontana, MT



Red Panda exhibit at Seneca Park Zoo, NY

Precedents of Forest Trek Exhibits



Example of Eagles Nest

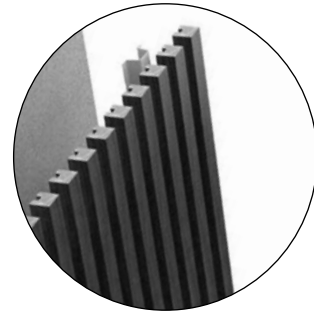
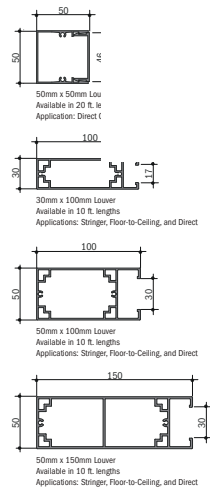


Example of U-Turn Round



Example of Wing Span

Kiosk Cladding: Aluminum battens (with a solid color)



NS-2N
Dark Bronze Matte



NS-1N
Black Matte



Reference images from product catalogs

Metal Coating Colors: Perimeter Fence, Exclusion Fences, Animal Enclosure Masts, Landscape Edging

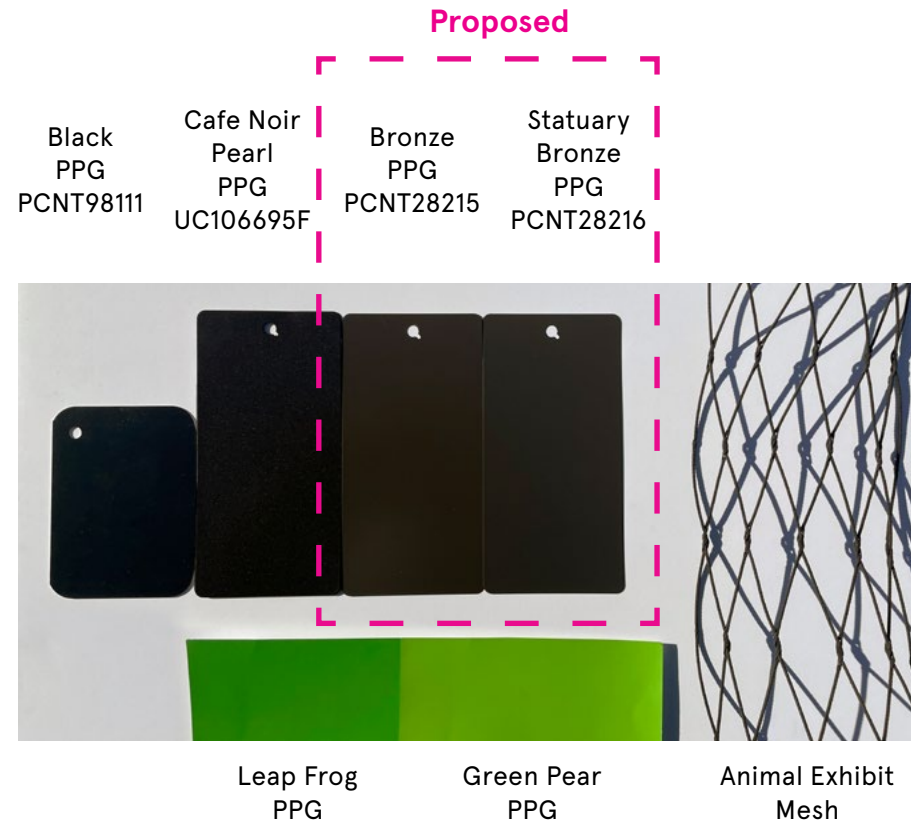


Image of samples next to animal enclosure material (black oxide stainless steel woven mesh) and green paint samples for perimeter fence mesh

Primary Path: PDC-approved concrete pavers to match existing

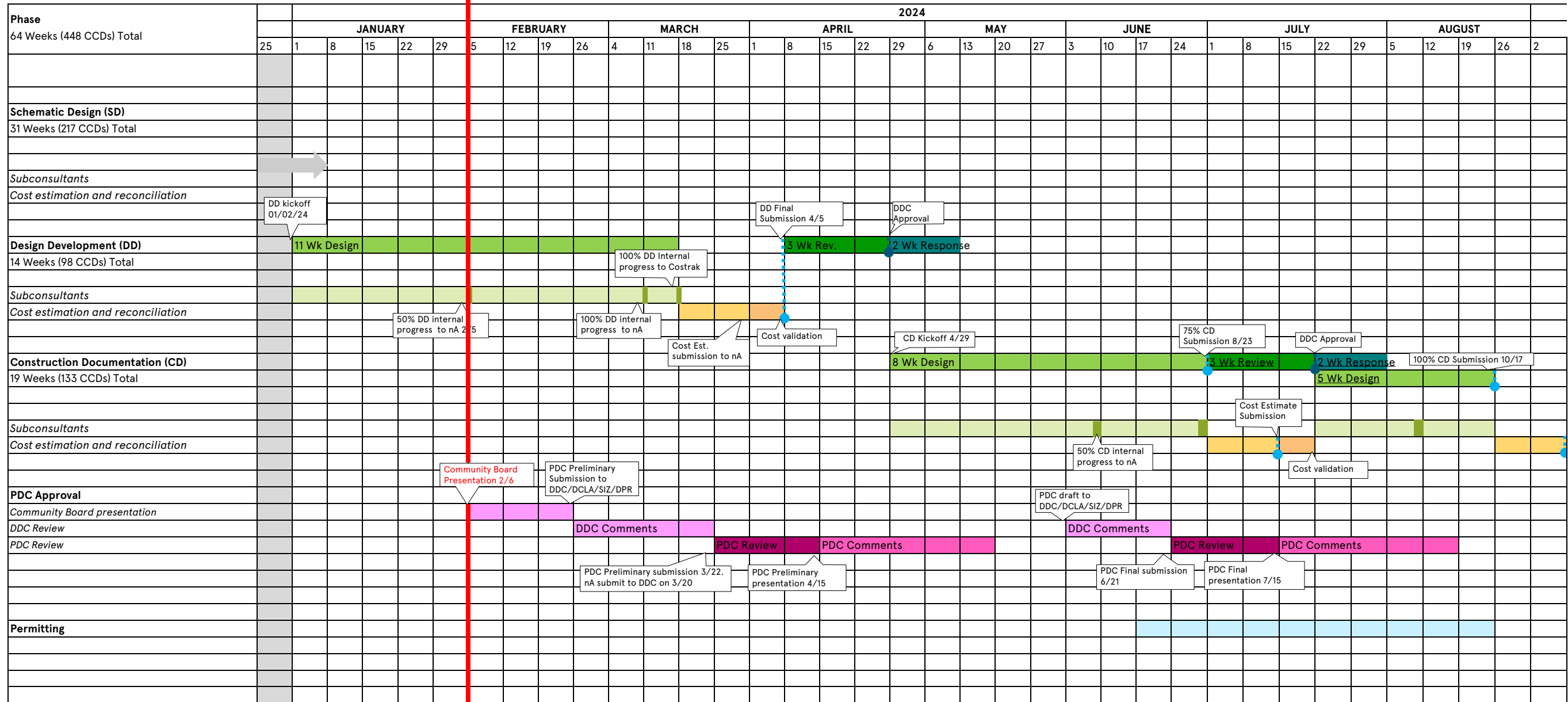
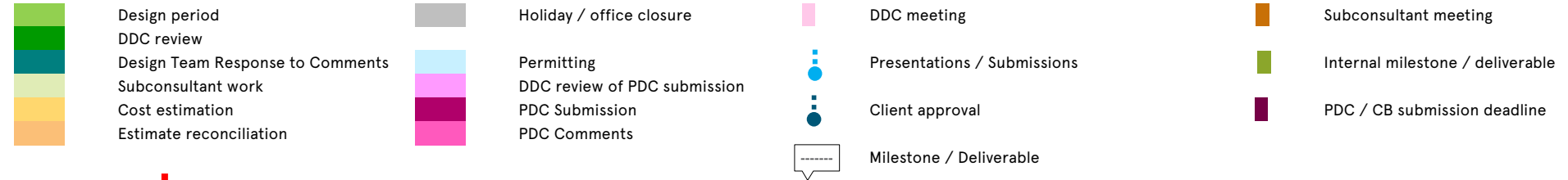


Image of existing pavers

Project Schedule

nARCHITECTS

**STATEN ISLAND ZOO
PROJECT SCHEDULE**
2/1/2024



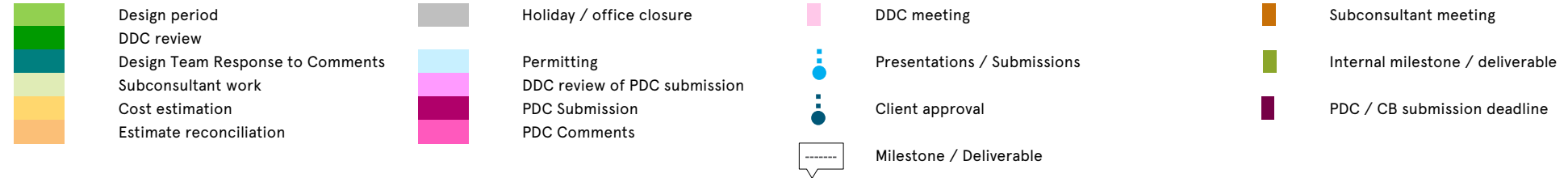
**S. I. ZOO CLOVE ROAD RESTORATION
COMMUNITY BOARD PRESENTATION**
February 6, 2024



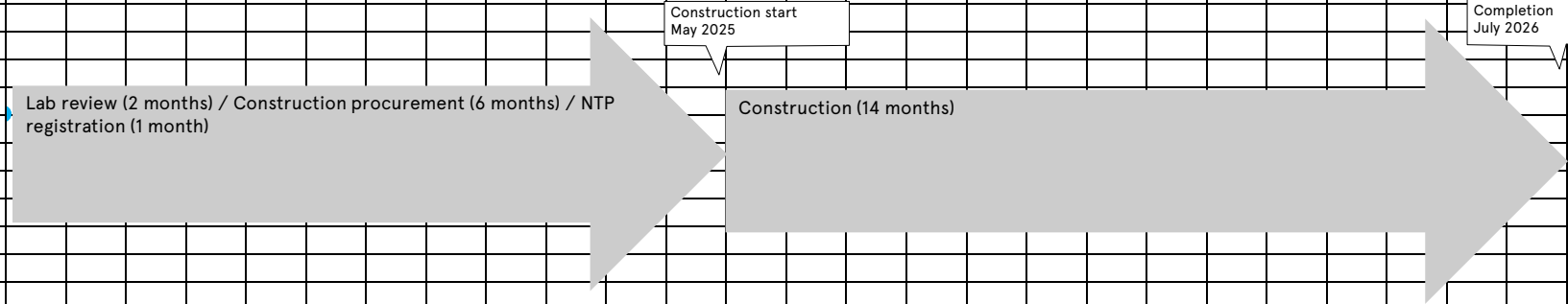
Project Schedule

nARCHITECTS

**STATEN ISLAND ZOO
PROJECT SCHEDULE**
2/1/2024



Phase	2024				2025												2026																					
	September				O	N	D	J	F	M	A	M	J	J	A	S	O	N	D	J	F	M	A	M	J	J	A	S	O	N	D							
64 Weeks (448 CCDs) Total	9	16	23	30																																		
Schematic Design (SD) 31 Weeks (217 CCDs) Total																																						
<i>Subconsultants</i>																																						
<i>Cost estimation and reconciliation</i>																																						
Design Development (DD) 14 Weeks (98 CCDs) Total																																						
<i>Subconsultants</i>																																						
<i>Cost estimation and reconciliation</i>																																						
Construction Documentation (CD) 19 Weeks (133 CCDs) Total																																						
<i>Subconsultants</i>																																						
<i>Cost estimation and reconciliation</i>																																						
PDC Approval																																						
<i>Community Board presentation</i>																																						
<i>DDC Review</i>																																						
<i>PDC Review</i>																																						
Permitting																																						



Contact Information

Anna Killion
Outreach Coordinator
Office of Community Outreach & Notification (OCON), DDC
KILLIONAN@DDC.NYC.GOV

Norberto Acevedo
Director
Office of Community Outreach & Notification (OCON), DDC
ACEVEDONO@DDC.NYC.GOV



S. I. ZOO CLOVE ROAD RESTORATION
COMMUNITY BOARD PRESENTATION
February 6, 2024