





Public Design Commission  
**Forty-Second Annual Awards  
for Excellence in Design**

Gracie Mansion  
Wednesday, October 30, 2024

**Eric Adams**

Mayor

**Maria Torres-Springer**

First Deputy Mayor

**Public Design Commission of the City of New York**

**Kenseth Armstead**

Painter

**Isabel Castilla**

Landscape Architect

**Laurie Hawkinson**

Architect

**Bill Heinzen**

Mayor's Representative

**Karen Kiehl**

Brooklyn Museum

**Carey Maloney\***

The New York Public Library

**Deborah Marton**

Lay Member

**Manuel Miranda**

Lay Member

**Dr. Merryl H. Tisch**

The Metropolitan Museum of Art

**Jimmy Van Bramer**

Lay Member

**Sreoshy Banerjea**, Executive Director

**Jenna Miller**, Director for Urban Design & Policy

**Carolina Llano**, Director of Art, Design & Technology

**Julianna Monjeau**, Archivist & Senior Records Manager

**Ryu Kim**, Project Manager

**Chelsea Chaug**, Project Coordinator

**Mary Beth Betts**, Tour Manager

Gary Deane and Gail Green, Docents

\*Susan Morgenthau served on the Commission  
as the New York Public Library representative through January 2024.  
Mary Valverde served on the Commission  
as the Sculptor member through January 2024.

## **Public Design Commission of the City of New York**

The Public Design Commission (PDC) is an advocate for innovative, sustainable, and equitable design of the public realm. As New York City's design review agency, the PDC reviews hundreds of proposals each year, including permanent buildings, parks, open spaces, and art on City-owned property. The PDC comprises 11 members who serve pro bono and meet monthly to review and vote on projects that are submitted by City agencies. Members include an architect, landscape architect, painter, sculptor, and three lay members, as well as representatives from the Brooklyn Museum, Metropolitan Museum of Art, The New York Public Library, and the Mayor. When reviewing designs, the PDC considers an array of design parameters such as the unique history and context of the site, public realm impact, durability and resiliency of materials, and how to successfully achieve the desired function and programs so that the built project can best serve New Yorkers.

## **Annual Awards for Excellence in Design**

Since 1983, the Public Design Commission has recognized well-designed public projects with its Annual Awards for Excellence in Design. The winning projects are selected from the submissions reviewed by the Commission the previous year and exemplify best practices in public design. These projects range in size from large scale mixed-use developments to prototypical bioswales, and incorporate green infrastructure, waterfront resiliency, accessibility, innovative materials, creative planning, and sustainability.

## **Gracie Mansion Conservancy**

In 1799, a prosperous New York merchant named Archibald Gracie built a country house overlooking a sleepy, scenic bend in the East River, five miles north of what was then New York City. More than two centuries later, Gracie Mansion remains a historic treasure in the heart of one of the world's largest and most vibrant cities. It is one of the oldest surviving wood structures in Manhattan, a member of New York's Historic House Trust, and listed on the National Register of Historic Places. In 1896, the City of New York appropriated the estate due to the non-payment of taxes from the then owner, incorporating its 11 acres into East River Park, later renamed Carl Schurz Park. In 1942, Fiorello H. La Guardia and his family moved into Gracie Mansion, at which point it became the official residence of the Mayor. The Gracie Mansion Conservancy, founded in 1981, is a private not-for-profit organization whose goal is to preserve and honor Gracie Mansion's historical elements originating from the Federal Period, while also offering new programming that speaks to the diverse backgrounds and experiences of all New Yorkers.

October 30, 2024

Fellow New Yorkers,

Today marks a celebration of creativity and vision, as we gather for the 42nd Annual Awards for Excellence in Design. These achievements showcase the transformative power of thoughtful urban design, and inspired architecture in shaping the spirit of our city.

In every corner of our five boroughs, there has been a resurgence of civic design, and public participation. New York City is back and better than ever, evolving into a more vibrant, family-friendly metropolis that prioritizes the needs of working-class New Yorkers. Every day, this administration is working to deliver on our vision for a safer, more affordable, and more livable New York where hardworking families and individuals across all five boroughs can truly live, work, play, and thrive. The projects we celebrate today play a crucial role in realizing that vision.

The merit of these winning projects lies not just in their aesthetics and physical form, but in their power to bring people together, and to provoke powerful emotions, and elevate the health and quality of life for New Yorkers. I'm proud to see how our strategic investments are transforming every corner of our city. From the Bronx to Staten Island, we are building a stronger and healthier New York: a state-of-the-art recreation center in the Bronx, a light-filled library in Brooklyn, a resilient and robust greenway in Manhattan, innovative civic infrastructure in Gowanus, and modern parks in Queens and Staten-Island. The intergenerational designs of these projects serve all New Yorkers and provide respite in our busy urban lives.

Working New Yorkers have always had a critical voice in shaping their communities, and these projects reflect their input and aspirations. As we applaud these achievements, let us also recognize that achieving design excellence is a collaborative endeavor. It's sparked from the synergy between talented professionals, engaged communities, and a civic vision that prioritizes the public good. These projects embody the very best of what can happen when we work together towards a common goal.

Congratulations once again to all the awardees. Your exceptional work is not just enhancing our urban landscape; it's strengthening the foundation for a more equitable, resilient, and vibrant New York.

Sincerely,

A handwritten signature in black ink that reads "Eric Adams". The signature is fluid and cursive, with the first letters of "Eric" and "Adams" being capitalized and prominent.

Eric Adams,  
Mayor

October 30, 2024

Dear Friends,

This year's Public Design Commission's 42nd Annual Awards for Excellence in Design underscores the vital role that outstanding public design plays in shaping New York City's economic vitality and quality of life.

The projects we celebrate today represent how thoughtful, innovative design in our public spaces and civic buildings yields significant returns on investment for our city. These projects do more than beautify our urban landscape; they catalyze economic growth, enhance community well-being, and reinforce New York's position as a global leader in urban innovation.

From the Bronx to Brooklyn, our projects showcase how design excellence transforms neighborhoods into vibrant community hubs. The Gowanus and Manhattan Greenway projects demonstrate our commitment to integrating essential infrastructure with inviting public spaces, enhancing connectivity and promoting active lifestyles. Meanwhile, public art installations like the Shirley Chisholm Monument enrich our cultural landscape, sparking dialogue and reinforcing New York's status as a global cultural capital.

It's worth noting that the Public Design Commission has made significant strides in streamlining its processes and enhancing transparency, ensuring that these impactful projects can move from concept to reality more efficiently. This commitment to continuous improvement amplifies the positive impact of design excellence on our communities.

As Deputy Mayor for Housing, Economic Development, and Workforce, I am acutely aware of the profound economic impact that excellence in public design has on our city. These projects create jobs in design, construction, and maintenance. By creating more livable and attractive urban environments, we enhance New York's competitiveness in attracting and retaining talent and businesses.

To all the dedicated professionals at the Public Design Commission, the PDC commissioners, our capital agencies, and talented design teams: your work is not just shaping our skyline and streetscapes; it's building the foundation for a more prosperous, equitable, and vibrant New York City. Congratulations to all this year's awardees. Your projects demonstrate how thoughtful public design can positively influence both our city's economic health and the daily lives of New Yorkers.

Sincerely,

A handwritten signature in black ink, appearing to read 'Maria-Torres Springer', with a long horizontal flourish extending to the right.

Maria-Torres Springer,  
First Deputy Mayor

As we gather for the 42nd Annual Awards for Excellence in Design, we celebrate the transformative power of civic design in shaping New York's built environment. This year's awarded projects exemplify our commitment to innovative, sustainable, and equitable design that enhances the quality of life for all New Yorkers. Every day, our public servants, and dedicated design teams are working hard to deliver on our vision for a safer, and vibrant New York.

The 11 projects we honor today showcase the breadth of New York's civic design, including libraries, recreation centers, parks, infrastructure facilities, and public art installations that blend community-centered design and environmental stewardship. These award-winning projects not only elevate our city's aesthetic landscape but also play a crucial role in fostering more sustainable, accessible, and resilient communities for all New Yorkers.

What often goes unseen is the extraordinary collaboration between the city agencies, the consultant teams, and the Public Design Commission staff, and commissioners. This behind-the-scenes teamwork is the backbone of every project we celebrate today. While PDC feedback helps move the needle towards excellence, it's the innovative responses from our agency teams and designers—adeptly navigating project constraints —that bring these visions to life.

The Public Design Commission stands firm in its mission: to approve and advocate for public designs that serve New York's diverse population's evolving needs, while supporting the administration's vision for a thriving New York. Over the past year, we've refined our project review approach based on applicant feedback, enhancing transparency, efficiency, and flexibility. These improvements have streamlined the process for our applicants and agency liaisons, accelerating the delivery of high-quality projects to New Yorkers. These enhancements to our processes have played a crucial role in facilitating the outstanding projects we celebrate today. They represent not just the creativity and dedication of their teams, but also the success of our collective efforts to improve the path from project concept to approval.

Congratulations to all the awardees and thank you to every team member whose dedication and creativity have made these projects a reality. Your contributions are shaping a New York where every resident can thrive. These projects don't just transform our cityscape, they create spaces where communities connect, innovate, and grow. You're building the foundation of a New York that works for all.

**Sreoshy Banerjea**, Executive Director  
Public Design Commission





# ***A Bit of Everything* by Misha Kahn**

Douglaston-Little Neck Library, 249-01 Northern Boulevard, Little Neck, Queens

A project of the Department of Cultural Affairs, the Department of Design and Construction, and the Queens Library

**Misha Kahn**  
**BKSK Architects**

Misha Kahn's work exists at the intersection of design and sculpture. Kahn's artistic process flows fluidly between the handmade and digital, and he utilizes a variety of production processes, including casting, carving, welding, and 3D printing.

For *A Bit of Everything*, Misha Kahn was inspired by his own experiences as a child visiting the local public library: "I would wander through the seemingly endless rows of stacks and pick up unexpected books to discover new stories, histories, and characters. For me, the library was a safe space, a community center and grounds for discovery all in one. I think the element of surprise and unexpected discovery is the part that really gives a library its true magic." Kahn wanted to capture that unadulterated essence through shapes that remind people of elements of their community and forms that are pulled from the narratives and information the library holds. The widely varied shapes, each unique and some inspired by the Douglaston-Little Neck area, are suspended in a stainless-steel scaffold that creates a structure and logic for the shapes to exist within, much the way a library becomes a means to unite people, communities, and information, while always offering endless chances to discover something new.



# Aesop Park

Page and Bartow Avenues, Staten Island

A project of NYC Parks

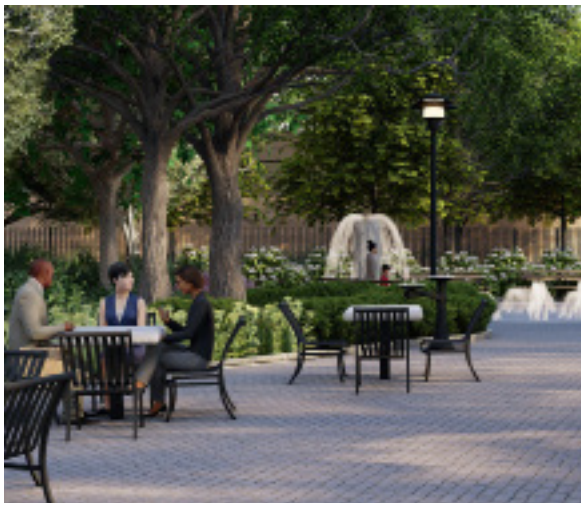
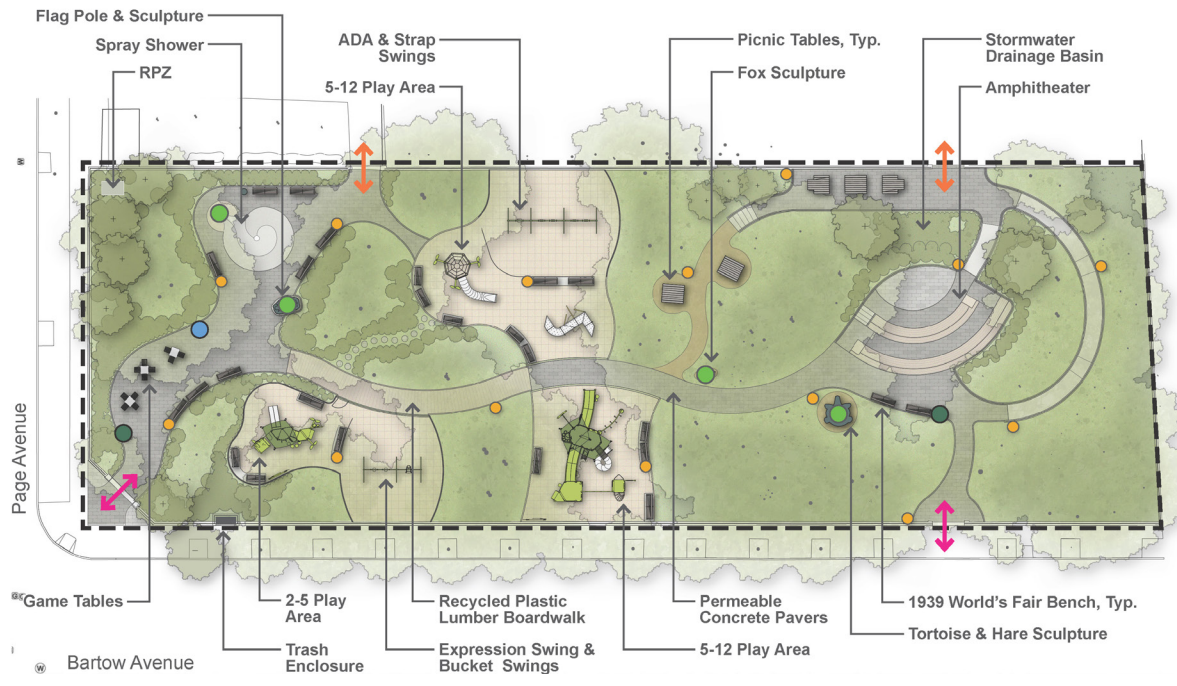
## **NYC Parks Capital Projects In-house**

The redesign of Aesop Park strives to integrate community amenities within a lush forest of nearly 150 existing trees. The new site layout situates program elements around the mature canopy, creating a whimsical experience of exploration and discovery. The park is divided into three program areas – plaza, play, and performance – placed along a central spine to improve accessibility and encourage movement between the spaces.

The entry plaza with a spray shower is formalized with programming that welcomes all ages including tables for students to do homework or adults to sit and have lunch. The plaza is bounded by evergreen planting to give the space definition and year-round visual interest.

The active play is located off the central boardwalk. The equipment style speaks to the forested context with natural colors and tall vertical posts that mirror the surrounding tree trunks. The tot area focuses on sensory and cooperative play including an expression swing. The 5-12-year play spans across two connected spaces. One side emphasizes movement, the other sensory play and a treehouse experience.

The amphitheater is scaled to P.S. 6's needs and can be directly accessed from the street or school. A sloped path moves through the seating area providing accessibility with companion seating at multiple levels.



# Borough Park Library

1265 43rd Street, Brooklyn

A project of the Department of Design and Construction and the Brooklyn Public Library

## LEVENBETTS

The Borough Park Branch Library in Brooklyn consists of a complete interior and exterior renovation of the 18,000 square foot building with a new surrounding landscape. The design intent for the library is to create a light-filled public civic space of learning, self-improvement and community gathering that has strong architectural connections to the street and adjacent public and children's gardens. Inside the building, the ideas of connectivity are reinforced with transparent partition walls as well as an open egress stair that fosters active design and movement between floors.

The facade prioritizes the relationships between the interior spaces of the library and the exterior street and garden spaces as well as gives a civic presence in the neighborhood. The facade consists of concrete panels in a fluted profile and subtle light red color. This material approach to the facade both ties the building to the masonry character of the street while also setting it apart as a civic structure with a sculpturally textured facade.

By keeping the existing steel structure, floor slabs and roof, the project reduces its overall carbon footprint and reduces energy consumption with a fully upgraded HVAC system. The project is projected to meet LEED Silver certification.



# Owls Head Combined Sewer Overflow Facility Headhouse and Open Space

Gowanus Canal, 2nd Avenue and 6th Street, Brooklyn

A project of the Department of Environmental Protection and NYC Parks

**Selldorf Architects**  
**Scape**  
**Hazen**  
**Brown and Caldwell**

Continuing the City's work to limit combined sewer overflows into the Gowanus Canal, this four-million-gallon underground tank and associated headhouse will intercept and store combined sewage during rainstorms. The massing of the headhouse is guided by the equipment and processes within, creating an assemblage of volumes that are unified by tubular cast-in-place lower embodied carbon concrete walls, echoing the industrial silos historically found along the Gowanus Canal. Large glass windows seamlessly extend the tubular pattern yet lend transparency in daytime and a warm glow at night. The odor control vessels and ductwork are cast in a vibrant pop of color to celebrate rather than hide this critical operational feature. Topped with an extensive green roof, the headhouse design embodies the grace and grit of Gowanus.

Guided by community workshops, the design of the two-acre public open space prioritizes waterfront access, ecosystem restoration and opportunities for environmental education. The design features a continuous waterfront esplanade, a get-down, a tidal wetland and the city's first ADA-accessible kayak launch. Designed with the floodplain in mind, the landscape includes plant communities that will thrive in tidal inundation, capture and filter stormwater and create pollinator habitat. Plazas, lawn space, an amphitheater and demonstration gardens with interpretive graphics afford visitors myriad options for community building and environmental stewardship.





# Manhattan Greenway Harlem River

Harlem River Drive between East 125th Street and East 132nd Street, Manhattan

A project of the Economic Development Corporation and NYC Parks

## **Langan Starr Whitehouse Landscape Architects and Planners**

Manhattan Greenway Harlem River will make waterfront recreation accessible to East Harlem and connect cyclists from Randall's Island and the South Bronx to the Manhattan Waterfront Greenway. This project extends 3,600 linear feet of parkland along a stretch of the Harlem River that has long been a "missing link" in the Greenway. Located between 125th and 132nd Streets, this project creates seven acres of passive lawns, fitness areas, a playground, public art, and community spaces for fishing, grilling, and performance. The southern park area features sports under the soaring RFK Bridge structure and a lawn overlooked by a stone amphitheater. The northern park area features a second lawn.

As much as possible, the Greenway is separated from pedestrian areas. It wends through pollinator meadows and native thickets, landscapes which buffer the adjacent Harlem River Drive. This alignment frees the 16'-wide waterfront esplanade primarily for pedestrians.

The park is part of the larger waterfront project to replace and repair a range of timber supported low-level relieving platforms, timber crib-supported seawalls and masonry gravity walls, high-level steel pipe pile supported platforms, steel sheet pile bulkheads, and rip-rap embankments. These enhancements will ensure long-term public riverfront access through resilient and robust infrastructure.



# Orchard Beach Maintenance and Operations Facility

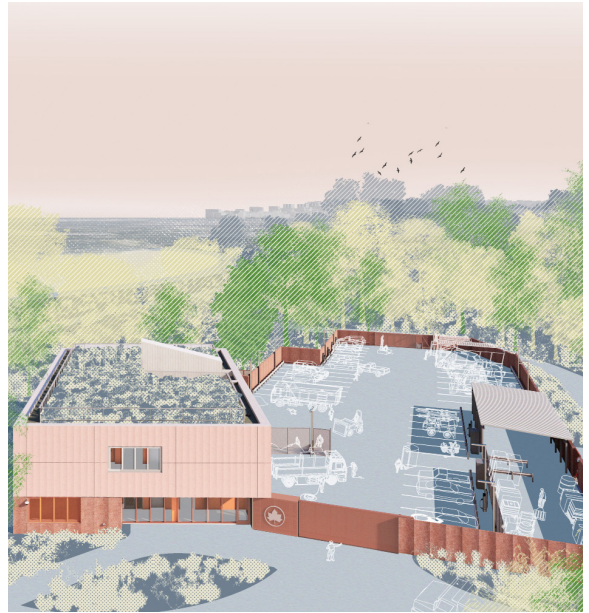
2 Orchard Beach, Pelham Bay Park, Bronx

A project of the Department of Design and Construction and NYC Parks

## nARCHITECTS

The new Orchard Beach Maintenance and Operations Facility will serve to support permanent and seasonal maintenance and administrative functions previously located within the nearby historic Orchard Beach Pavilion which was flooded during Hurricane Sandy. The new building will house storage areas for materials associated with beach operations, plumbing and carpentry work rooms, muster space for staff, and supervisor offices. The associated service yard will house NYC Parks vehicles and equipment for necessary operations and provide electric charging stations for the Parks fleet. A fuel station will also be provided.

Located outside the flood zone within a portion of the picnic lawn southwest of the historic Pavilion, the siting of the new facility carefully considers the surrounding woodland areas of Pelham Bay Park, the natural topography, public pedestrian circulation, views, and visibility. The compact, 2-story building and service yard walls are clad with rose-tinted precast concrete panels that reference the color, material, and architectural language of the historic Pavilion. In addition, to minimize the visual presence of the building and service yard, beautify the area and reduce storm water runoff, the site design integrates extensive woodland planting and grass bioswales.



# Prospect Park Upper and Lower Vale

Northeast end of Prospect Park between Grand Army Plaza and the Prospect Park Zoo, Brooklyn

A project of NYC Parks and the Prospect Park Alliance

## **NYC Parks Capital Projects In-House Prospect Park Alliance**

Prospect Park Alliance's restoration of the Prospect Park Vale transforms one of the park's historic yet little-known landscapes in its northeast corner into a lush and vibrant community destination. This area of the park had not seen capital improvement in over fifty years, and is a gateway to the park's core woodlands, Brooklyn's last remaining forest, and a front door to neighboring communities of Crown Heights, Flatbush and beyond.

The project includes the historic restoration of the Children's Pool in the Lower Vale, which reintroduces architectural details while improving habitat for hundreds of species of birds that flock to this destination. The Upper Vale, a former rose garden with three disused concrete basins, is transformed into three distinct landscapes that were conceived through an intensive community engagement process: a pollinator garden and planted arbor, a children's nature exploration area, and a lawn with natural seating elements and small building built into the terrain with composting restrooms and a sheltered gathering space. The restored Vale will serve as a vibrant and welcoming front door to the community, an essential woodland habitat for hundreds of species of wildlife, and an intergenerational gathering space for all park lovers.



# Queensbridge Baby Park

Vernon Boulevard and Queensbridge Park Greenway,  
adjacent to the Queensboro Bridge, Long Island City, Queens

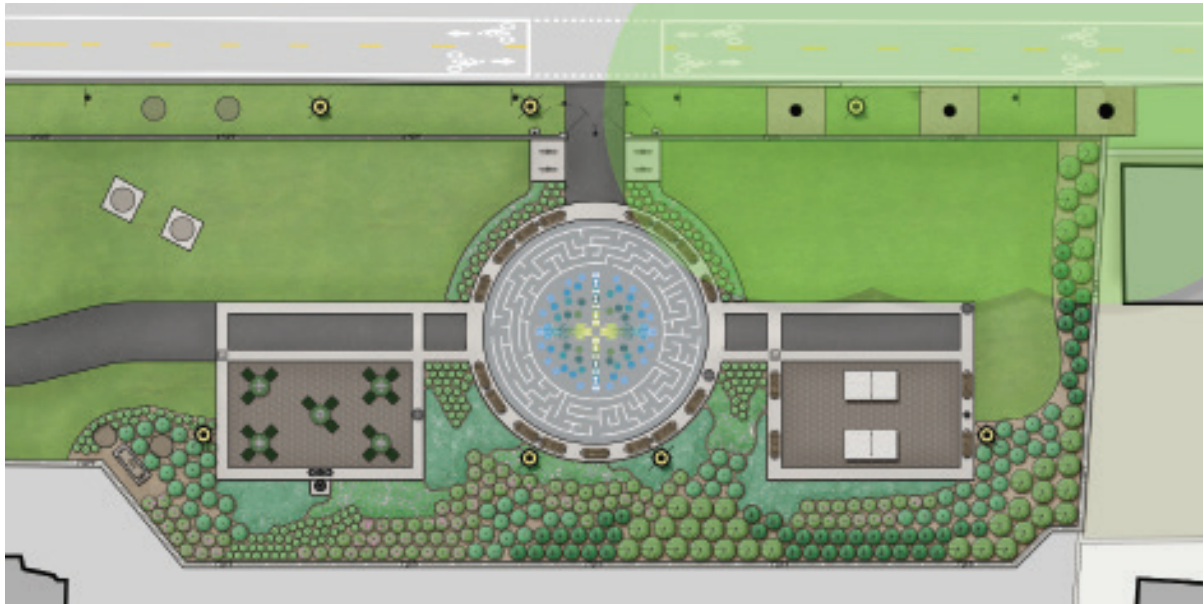
A project of NYC Parks

## NYC Parks Capital Design Team

Queensbridge Baby Park is located in the northern shadows of the Queensboro Bridge and directly across from the Queensbridge Houses, the largest housing development in Queens. Due to complicated overlapping subsurface utilities, the types of park amenities at this site were limited and it was historically used for parks operations. This design transforms what is currently a maintenance yard, and creates a new, welcoming and active open space for public use. It will provide a verdant backdrop to the Queensbridge Park Greenway which runs along the northside and is an important link for active recreation in this area.

The design results from a successful collaboration with neighborhood residents and includes four new spaces with multiple programmatic elements to provide optimal amenities for the community. The central space, ringed by benches, is intended for multiple uses including community gatherings, and features decorative painted games designed to be sensitive to neurodiverse children's needs. The space features views towards the Empire State Building framed through the arches of the Queensboro Bridge. There are two flanking spaces, one with ping pong tables, and the other with steel bistro tables that also offer gameboards for chess. Two areas with natural lawn offer areas for quiet recreation. The south and west edges of the site are planted to provide a green buffer and screening from the urban infrastructure.





# **Shirley Chisholm Monument, *Our Democracy, Our Destiny* by Amanda Williams and Olalekan Jeyifous**

Prospect Park, Parkside Avenue and Ocean Avenue, Brooklyn

A project of the Department of Cultural Affairs' Percent for Art Program, in collaboration with NYC Parks, the Prospect Park Alliance, and the Department of Transportation

## **Amanda Williams and Olalekan Jeyifous**

This monument to Shirley Chisholm, created by artists Amanda Williams and Olalekan Jeyifous, part of She Built NYC, celebrates her legacy as a civil servant who “left the door open” for others to follow in her path toward equity. A woman of firsts, Chisholm created space for Americans of all backgrounds in our country’s political landscape. Depending upon your vantage point and approach to the Ocean Avenue entrance of Prospect Park, you see Ms. Chisholm’s silhouette inextricably intertwined with the iconic dome of the U.S. Capitol building. The composite profile symbolizes how she disrupted the perception of who has the right to occupy such institutions and to be an embodiment for democracy. This trailblazing woman was not diminutive and this monument reflects how Chisholm’s collaborative ideals were larger than herself. The ground plane mimics the House Chamber, paying homage to those who came after Ms. Chisholm and leaving room for those who have yet to come. A quote from Chisholm’s 1972 Presidential Campaign announcement encircles the monument: “Those of you who have been neglected, left out, ignored, forgotten or shunned aside for whatever reason... join me in an effort to reshape our society and regain control of our destiny...”



# Walter Gladwin Recreation Center

Walter Gladwin Park (formerly Crotona Park, then Tremont Park),  
East Tremont Avenue between 3rd Avenue and Arthur Avenue, Bronx

A project of the Department of Design and Construction and NYC Parks

## Marvel Architects

The Walter Gladwin Recreation Center will provide new athletic facilities to a neighborhood that has been historically excluded, allowing all generations to gather and foster a greater sense of community.

This project consists of a 40,000 square foot recreation and community center for the New York City Parks Department. The Walter Gladwin Recreation Center will be sited on the north side of Walter Gladwin Park in the Bronx and aims to create an activity hub that serves the park and neighborhood while negotiating the transition from the city urban fabric to the park landscape. The primary building programs will include athletic facilities such as a gymnasium and cardio, strength, dance, and spin rooms as well as educational and administrative spaces. The building structure will consist primarily of mass timber glulam and CLT elements and its façade will be clad in a brick façade with large glazed openings.



# ***What do I See to be Except Myself*** **by Oasa DuVerney**

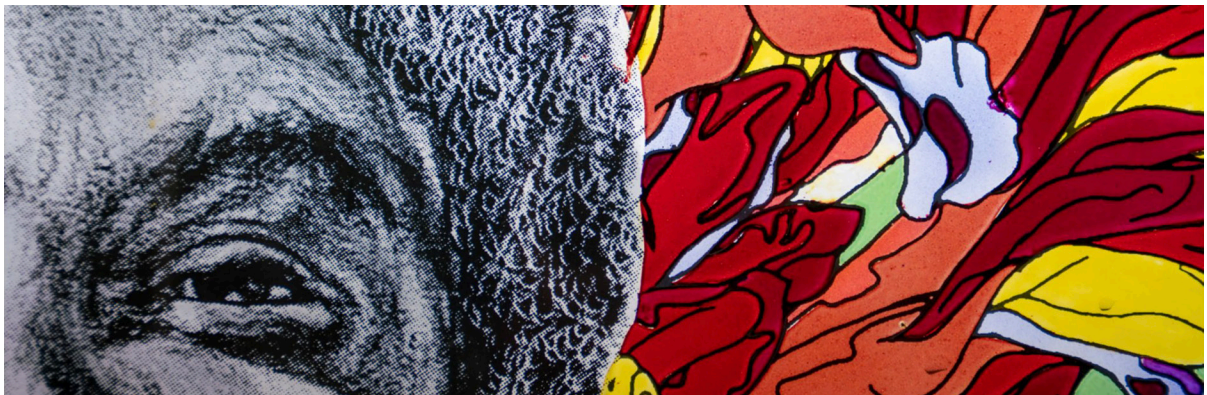
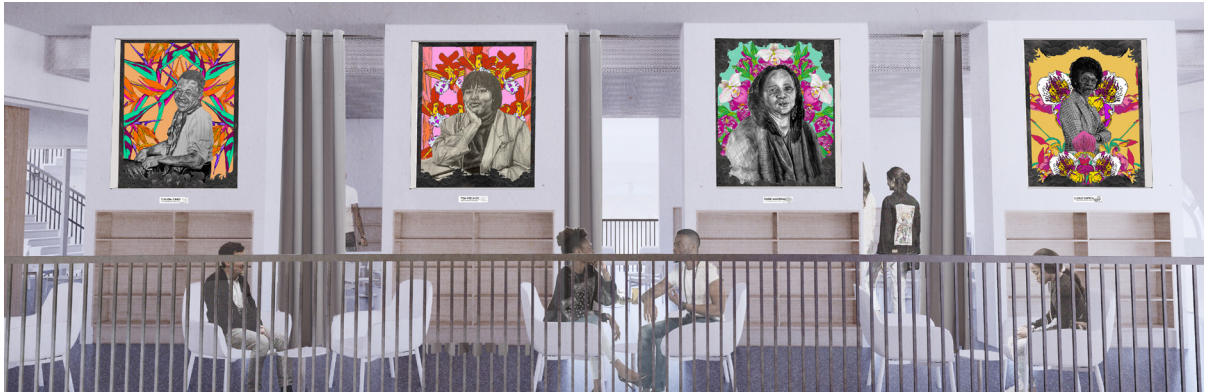
Eastern Parkway Library, 1044 Eastern Parkway, Brooklyn

A project of the Department of Cultural Affairs, the Department of Design and Construction, and the Brooklyn Public Library

**Oasa DuVerney**  
**Allied Works Architecture**

Brooklyn-based Artist and mother Oasa DuVerney has proposed a series of 8 portraits of influential authors from the African diaspora with ties to Brooklyn or New York City for the Eastern Parkway Library. The portraits will be framed by a motif representing Black power waves, and features plant life symbolizing Black womanhood and migration history. The artworks will be created using glass using a combination of screen printing, digital ceramic printing, hand painting, and airbrushing techniques. The pieces will be illuminated using LED panels approximately 48x60 inches.

The selection of influential authors was a community-driven process involving BPL librarians, teen program participants, and the general library membership. The final eight authors chosen through this process are Lucille Clifton, Paule Marshall, Tom Feelings, Edwidge Danticat, Claudia Jones, Gloria Naylor, Claude McKay, and Shirley Chisholm. The artworks will be displayed on the mezzanine level near the Teen Zone, visible from the main floor, and surrounded by comfortable seating. This project aims to honor the diversity of cultures and people of African descent living in Crown Heights and celebrate these authors' literary contributions.



# Special Recognition Rooftop Photovoltaic Program

Citywide Project

A project of the Department of Citywide Administrative Services

## **The Department of Citywide Administrative Services**

Investing in a clean energy future is a critical piece to addressing the climate crisis. NYC has one of the most ambitious climate initiatives, including setting a target to deploy 100 MW of solar citywide by 2025.

The portfolio of rooftop photovoltaic panels on city-owned properties is a primary contributor towards NYC's goal, and these projects are the result of a collaborative effort between DCAS, which is funding and often overseeing the installation of the panels, and agencies, which own and maintain the buildings. Time is not on our side with climate change, and the standardized design provides an expedited and efficient regulatory review and approval process while also offering flexibility in the configuration and layout of panels to maximize solar capture.

The panels, many of which are sited on public schools in disadvantaged communities, are learning tools and support a just transition to clean energy. While there continues to be much work to be done to find sites, reconcile competing rooftop uses, and accelerate procurement, New York City continues to innovate on ways to harness renewable energy to meet its goal to be fossil fuel free by 2050.





# Design Teams

## *A Bit of Everything by Misha Khan*

**Misha Kahn Studio** Misha Kahn, Artist, Ryan Decker, Director, Filip Bielicki, Tech Development, **BSKS Architects** Harpreet Dhaliwal, Principal; George Schieferdecker, Partner; Cynthia Lordan, Associate **Department of Cultural Affairs** Laurie Cumbo, Commissioner; Alton Murray, Deputy Commissioner; Michael Krevet, Chief of Staff; Lance Polivy, General Counsel; Kendal Henry, Assistant Commissioner, Public Art & PDC Liaison; Sergio Pardo Lopez, Director, Percent for Art & PDC Liaison; David Mandel, Community Liaison, Public Art **Department of Design and Construction** Thomas Foley, Commissioner, Office of the Commissioner; Eric Macfarlane, First Deputy Commissioner, Office of the Commissioner; Salvatore Cali Jr., Deputy Commissioner, Public Buildings; Joseph Crupi, Associate Commissioner, Public Buildings; Michaela Metcalfe, Executive Director, Design and Construction Excellence; Xenia Diente, Public Art Deputy Director, Design and Construction Excellence; Dora Blount, Senior Design Liaison & Public Art Manager, Design and Construction Excellence; Sarah Yehuda, Public Art Manager, Design and Construction Excellence; Debbie Vandermark, Design Liaison, Design and Construction Excellence; Natalia Rossi, Junior Project Manager, Design and Construction Excellence; Anthony Romeo, Jr., Program Director, Libraries, Capital Project Delivery; Daniela Correia De Castro, Design Project Manager, Libraries, Capital Project Delivery; Eric Boorstyn, Associate Commissioner, Architecture & Engineering; Starling Keene, Director, Architecture & Engineering; Yuri Birchwood-Fuentes, Senior Design Reviewer, Architecture & Engineering; Ashwani Bedi, Director, Architecture & Engineering; Kossi Ahouissi, Deputy Director, Architecture & Engineering Queens Public Library Dennis Walcott, President and CEO; Sung Mo Kim, Chief Operating Officer; John Katimaris, Vice President of Capital Projects Management; Zia Dawood, Director of Capital Projects Management; Richard Tobin, Project Manager; Chantal Paret Antoine, Library Planner; Carlos Carbonero, Project Manager & Public Design Commission Liaison

## **Aesop Park**

**NYC Parks Capital Design Team** Jordan Weber, former Landscape Architect, Staten Island Team; Nancy Prince, Chief of Landscape Architecture; Stephen Hamson, Director of Landscape Architecture, Staten Island Team; David McConnell, former Director of Landscape Architecture, Staten Island Team; Gabriella Keller, Deputy Director of Landscape Architecture, Staten Island Team; Sue Donoghue, Commissioner; Thérèse Braddick, Deputy Commissioner for Capital Projects; Mark Focht, Deputy Commissioner & Chief Operating Officer; Lynda Ricciardone, Staten Island Borough Commissioner; Vincent Cirrito, former Assistant Commissioner, Landscape Architecture Program Management; Meredith Griffin, Chief of Landscape Program Management; Joseph Homsey, Chief of Staff, Staten Island; Adrian L. Smith, Team Leader; Ruby Wei, Director of Specifications & Estimating; Anne Cumella, Deputy Director of Specifications & Estimating; Kevin Moulthrop, Specification Writer; Christina Yeung, Senior Estimator; Raymond Palmares, Deputy Director of Engineering; Heidi Maschino, Senior Civil Engineer; Stantec Bo Miao, Structural Engineer; Gus Henaidy, Lead Structural Engineer; Sam Jicky, Electrical Engineer; Mansour Nader, Lead Electrical Engineer; Ryan Wilson, Environmental Project Manager; Ilya Kliuchnik, Deputy Director of Survey; Jerome Thorpe, former Capital Arborist; Brenda Curtis, Capital Arborist; Trevor Lepucki, Senior Forester Clara Holmes, Natural Resource Group Plant Ecologist; Jennifer Lantzas, Deputy Director of Public Art Program; Maria Gonzalez-Villaraldo, Coordinator for Capital Projects, Bronx & Staten Island; Christian McNally, Capital Support Coordinator Bronx & Staten Island Teams; Adrienne Friedman, Administrative Manager; Sheena Brown, Public Design Commission Liaison **Stantec** James Bonavita, Consultant Civil Engineer; Greg Cavanaugh, Consultant Civil Engineer; Greg Sprich, Consultant Civil Engineer

## Borough Park Library

**LEVENBETTS** David Leven, Partner; Stella Betts, Partner; Varoon Kelekar, Senior Project Manager; Conor Byrne, Senior Architectural Designer; Sasha Urano; Juwan Palmer; Ben Smithers; Amanda Park; Gordon Jiang; Brenna Thompson; Jane Ilyasova Silman Thomas Reynolds, Senior Associate; Hubert Chang, Senior Engineer; Kyle Reich, Designer **McLaren Engineering** Brendan Kelly, Assistant Vice President; Bryan Check, Senior Engineer **Elizabeth Kennedy Landscape Architect** Elizabeth Kennedy, Principal; (Continues)Sungjun Park; Eleonora Ziliani **Plus Group Consulting Engineers** Imtiaz Mulla, Principal; Marina Solovchuck, Principal; Jacky Ruan; Sabin Maharjan **Lumen Architects** Nelson Jenkins, Principal; Mike Thai **Lally Acoustical Consultants** Jonathan Lally; Emily Lally; Martin Schiff **William Vitacoo Associates** Joe DeCeglie, Senior Vice President; Hackjong Choi, Senior Project Manager **Department of Design and Construction** Thomas Foley, Commissioner, Office of the Commissioner; Eric Macfarlane, First Deputy Commissioner, Office of the Commissioner; Salvatore Cali Jr., Deputy Commissioner, Public Buildings; Joseph Crupi, Associate Commissioner, Capital Program Delivery; Eric Boorstyn, Associate Commissioner, Architecture & Engineering; Lucy Wong, Assistant Commissioner, Capital Program Delivery; Sergio Vazquez, Program Director, Capital Program Delivery; Antonios Milatos, Deputy Director, Capital Program Delivery; Ahmed Hermas, Deputy Director, Capital Program Delivery; Dina Elkhaliny, Project Manager, Capital Program Delivery; Starling Keene, Executive Director, Architecture & Engineering; Ashwani Bedi, Executive Director, Architecture & Engineering; Teresa Byrne Salter, Deputy Director, Architecture & Engineering; Mandy LeBoeuf, Deputy Director, Architecture & Engineering; Yuri Birchwood-Fuentes, Senior Design Reviewer, Architecture & Engineering; Michaela Metcalfe, Executive Director, Design and Construction Excellence; Daphne Lasky, former Design Liaison, Design and Construction Excellence Brooklyn Public Library Linda Johnson, President & CEO, Brooklyn Public Library; Karen Sheehan, Executive Vice President, Finance and Administration; Philip Heller, Vice President, Capital Planning & Facilities Management; Sonya Covington, Director, Capital Planning & Facilities Management; Angeline Quirona, Project Director, Capital Planning & Facilities Management

## Owls Head Combined Sewer Overflow Facility Headhouse and Open Space

**Department of Environmental Protection** Rohit T. Aggarwala, Commissioner; Kathryn Mallon, Chief Operating Officer; Ana Barrio, Deputy Commissioner, Bureau of Engineering, Design & Construction; Angela DeLillo, Deputy Commissioner, Bureau of Wastewater Treatment; Beth DeFalco, Deputy Commissioner, Bureau of Public Affairs & Communications; Kenneth Moriarty, Executive Director, Wastewater Capital Program; Kevin Clarke, Portfolio Manager, Bureau of Engineering, Design & Construction; Marlon King, Accountable Manager, Bureau of Engineering, Design & Construction; Jesse Goldin, Accountable Manager, Bureau of Engineering, Design & Construction; Alicia West, Director of Public Design Outreach **NYC Parks** Sue Donoghue, Commissioner; Thérèse Braddick, Deputy Commissioner, Capital Projects; Jennifer Greenfeld, Deputy Commissioner for Environment & Planning; Martin Maher, Brooklyn Borough Commissioner; Davey Ives, Chief of Staff, Brooklyn Borough; Nicholas Molinari, Chief of Planning and Neighborhood Development; Nancy Prince, Chief of Landscape Architecture; Nate Grove, Chief of Waterfront & Marine Operations; Chris Syrett, Team Leader for Brooklyn; Jamey Hewitt, Deputy Chief of Operations, Brooklyn Borough; Chris Ameigh, Deputy Director of Marina Infrastructure; Elizabeth Ernish, Project Administrator for Planning; Chris Noel, Accessibility Coordinator; Marissa Fabricant, Project Development Coordinator for Planning; Sheena Brown, Public Design Commission Liaison **Seldorf Architects** Annabelle Seldorf, Principal; Kevin Keating, Partner in Charge; Michi Ushio, Project Manager; Kristine Makwinski, Senior Project Architect; Corey Crist, Project Architect; Bram Monson, Architectural Designer **Scape** Gena Wirth, Design Principal; John Donnelly, Technical Principal; Anna Hochhalter, former Associate; Will DiBernardo, former Design Director; Sylvia Barnett, Senior Associate; Jessica Arias, Senior Designer; Rita Kwong, Associate; Harshat Verma, Senior Designer; Gena Morgis, Associate; Tami Banh, Associate **Hazen** Peter Young, Project Director; Robert Albright, Project Manager; Eliora Camilleri, Project Manager; Michael Stallone, Architectural Design Lead; Jennifer Wojcieski, Architectural Engineer; Lisa Giroux, Structural Design Lead **Brown and Caldwell** Gui DeReamer, Design Manager; Tania Romero, Deputy Design Manager; Christina Chen, Deputy Design Manager

## Manhattan River Harlem Greenway

Langan George Leventis, Project Executive; Jonathan Goldstick, Project Director; Domenica Stasiak, Project Manager Starr Whitehouse Landscape Architects and Planners Stephen Whitehouse, Partner; Michael Haggerty, Principal, Director of Urban Planning and Design; Gail Wittwer-Laird, Principal; Alex Zervos, Project Manager One Architecture & Urbanism Travis Bunt, Principal; Mathew Staudt, Urban Design & Planning Indigo River Dena Prastos, Founder & CEO; Shea Thorvaldsen, Cost Estimating & Construction Operations Goldstick Studio Karen Goldstick, Lighting Designer NYC Parks Sarah Neilson, Chief of Policy and Long-Range Planning NYC EDC Len Greco, Senior Vice President; Meredith Simon Pearson, Assistant Vice President; Gale Rothstein, Public Design Commission Liaison

## Orchard Beach Maintenance and Operation Facilities

nARCHITECTS Mimi Hoang, Co-Founding Partner / Architect-of Record; Eric Bunge, Co-Founding Partner / Resource Principal; David Chessrown, Senior Associate / Project Manager; Fatemeh Shirpour, Project Designer; Julio Picatoste, Architect; Adina Bauman, Architect; Amelia Webb, Designer Langan Markus Wilmers, Founding Principal, MW-Skins Chris Vitolano, Senior Principal; Jennifer Allen, Project Manager; Imtiaz Din, Senior Staff Engineer; Brian Weinberg, Traffic Engineer; Steven Diemer, Project Engineer (Fueling); Daniel Badgley, Senior Project Landscape Architect W Architecture Amy Mitchell, Managing Principal; Qi An, Senior Landscape Designer Silman Victoria Ponce de Leon, Principal; Eytan Solomon, Senior Associate; Maya Stuhlbarg, Associate; Sarah Hultman, Engineer OLA Consulting Engineers Matthew Amicone, Principal; Matthew Ma, Senior Engineer; Matthew Melleby, Mechanical Engineer; Michelle Niles, Mechanical Engineer Lumen Architecture Nelson Jenkins; Natalia Lesniak; Wei-Chun Chan Lerch Bates Awni Haddad; Asma Osman; Yuexin Liao Reg Hough Associates Ken Miller; Matt Terranova Socotec Lee Ping Kwan, Associate; Emily Billheimer, Senior Project Manager of Sustainability; Anthony Thompson, Senior Project Manager of Energy; Raghav Venkatesh, Senior Energy Analyst Gilbane Building Company Raquel Diaz, Vice President; Edward Sheeran, Project Executive; Madelene Mejia, Project Manager; Rebecca Grech, Project Manager Department of Design and Construction Thomas Foley, Commissioner, Office of the Commissioner; Eric Macfarlane, First Deputy Commissioner, Office of the Commissioner; Yvi McEvilly, Assistant Commissioner, Office of the Commissioner; Jade Bailey, Program Director, Office of the Commissioner; Kayla Hom, Project Manager, Office of the Commissioner; Salvatore Cali Jr., Deputy Commissioner, Public Buildings; Judith Bernard, Associate Commissioner, Capital Program Delivery; Eric Boorstyn, Associate Commissioner, Architecture & Engineering; Michael Nastasi, Assistant Commissioner, Capital Program Delivery; Irene Alpert, Program Director, Capital Program Delivery; Devang Kapadia, Deputy Director, Capital Program Delivery; Andrew Murjas, Senior Project Manager, Capital Program Delivery; John O'Leary, Senior Project Manager, Capital Program Delivery; Starling Keene, Executive Director, Architecture & Engineering; Ashwani Bedi, Executive Director, Architecture & Engineering; Teresa Byrne Salter, Deputy Director, Architecture & Engineering; Mandy LeBoeuf, Deputy Director, Architecture & Engineering; Julie Alexander, Senior Design Reviewer, Architecture & Engineering; Michaela Metcalfe, Executive Director, Design and Construction Excellence NYC Parks Sue Donoghue, Commissioner; Iris Rodriguez-Rosa, First Deputy Commissioner; Thérèse Braddick, Deputy Commissioner, Capital Projects; Mark Focht, Deputy Commissioner & Chief Operating Officer; Jessenia Aponte, Bronx Borough Commissioner; Terence McCormick, Assistant Commissioner, Architecture & Engineering Program Management; Rebecca Byrnes, Chief of Architecture & Engineering; Laura Pavidonis, Chief of Partner Project Management, Architecture & Engineering; Nancy Prince, Chief of Landscape Architecture; Lawrence Scoones, Chief of Operations, Bronx; Kristen King, Chief of Natural Resources; Marlisa Wise, Team Leader for Architecture; Ellen Macnow, Program Coordinator for Parks Funded Projects; Andrew Penzi, Team Leader for Bronx; Renata Sokolowski, Director of Landscape Architecture for Bronx; Marianne Anderson, Pelham Bay Park Administrator; Kristine Zagorski, Deputy Administrator, Pelham Bay Park; Katerine Borrome, Director of Capital Projects, Bronx; John Dietz, Park Supervisor, Orchard Beach; Tyler Wilcox, Director, Bronx Forestry; Gregory Haber, Deputy Director, Bronx Forestry; Emily Humes, Director of Environmental Review; Kay Zias, Director of Environmental Remediation; Sybil Young, Preservation Officer; Sheena Brown, Public Design Commission Liaison

## Prospect Park Upper and Lower Vale

**Prospect Park Alliance** Morgan Monaco, Administrator and President; Christian Zimmerman, Vice President, Capital and Landscape Management; Svetlana Ragulina, Director of Landscape Architecture and Preservation; David Yum, Director of Architecture and Preservation; Amy Peck, Archivist; Jillian Pagano, Landscape Architect; Wylie Barker, Assistant Architect; Rachel Pendelton, Assistant Architect; Robert Garcia, Assistant Landscape Architect **NYC Parks** Sue Donoghue, Commissioner; Thérèse Braddick, Deputy Commissioner, Capital Projects; Martin Maher, Brooklyn Borough Commissioner; Nancy Prince, Chief of Landscape Architecture; Davey Ives, Brooklyn Borough Chief of Staff; Christopher Syrett, Team Leader, Brooklyn Team; Denise Mattes, Director of Landscape Architecture, Brooklyn Team; Rachel Kramer, former Deputy Director of Landscape Architecture, Brooklyn Team; Michael Leigh, Consultant Project Manager, Brooklyn Team; Brenda Curtis, Capital Projects Arborist; Imelda Bernstein, Senior Project Manager for Landscape Architecture; Sybil Young, Preservation Officer; Sheena Brown, Public Design Commission Liaison **Matrix New World Engineering** Vikki Hon, Project Engineer **Thornton Tomasetti** Sandra Forero, Vice-President/ Civil Engineering; Joanthan DeVito, Vice President; Alexander Sichel, Senior Project Director; Christopher Delany, Vice President; Dylan Tracy, Senior Engineer **PAR Engineering** Patricia A. Rodriguez, Professional Engineer; Alexandru Marin, Professional Engineer **The Liro Group** Bill Ackerman, Sr. Vice President/ Electrical Engineer; Mark Keptsi, Vice President **J.P. LaRue** John LaRue, Playground Safety Consultant **Tower Stone** Verne Tower, Marble Consultant **Silman** Eytan Solomon, Senior Associate; Rodrigo Hoyos, Senior Engineer KNL Lighting Jackson Ning, Principal; Jerry Kugler, Principal; Zhizhong Deng, Senior Designer **SGH** Bradford J. Antes, Consulting Engineer; Cheryl M. Saldanha, Senior Project Manager; Angela Y. Tarn, Project Consultant **7Group** Marcus Sheffer, Energy and Environmental Consultant; Gerren Wagner, Energy and Environmental Consultant; Tyler Thumma, Energy and Environmental Consultant **Clivus Milstrum** Don Wells, Consultant **Langan** Arthur Alzamora, Principal; Prasoon Tirari, Project Engineer **Safari Engineering** Yoichi Chiba, Director of Engineering; Christian Yanni, Engineer

## Shirley Chilsom Monument, “Our Democracy, Our Legacy” by Olalekan Jeyifous and Amanda Williams

**Olalekan Jeyifous**, Artist; **Amanda Williams**, Artist; Ryan Gann, Architect & Design Strategist; Milgo Bufkin, Fabricator **Department of Cultural Affairs** Laurie Cumbo, Commissioner; Alton Murray, Deputy Commissioner; Michael Krevet, Chief of Staff; Lance Polivy, General Council; Kendal Henry, Assistant Commissioner, Public Art & PDC Liaison; Sergio Pardo Lopez, Director, Percent for Art & PDC Liaison; David Mandel, Community Liaison, Public Art **NYC Parks** Sue Donoghue, Commissioner; Thérèse Braddick, Deputy Commissioner, Capital Projects; Martin Maher, Brooklyn Borough Commissioner; Nancy Prince, Chief of Landscape Architecture; Davey Ives, Brooklyn Borough Chief of Staff; Christopher Syrett, Team Leader, Brooklyn Team; Denise Mattes, Director of Landscape Architecture, Brooklyn Team; Rachel Kramer, former Deputy Director of Landscape Architecture, Brooklyn Team; Michael Leigh, Consultant Project Manager, Brooklyn Team; Jonathan Kuhn, Director, Art & Antiquities; Jennifer Lantzas, Deputy Director, Art & Antiquities; Sheena Brown, Public Design Commission Liaison **Prospect Park Alliance** Morgan Monaco, Administrator and President; James Snow, Chief Operating and Financial Officer; Christian Zimmerman, Vice President, Capital and Landscape Management; Svetlana Ragulina, Director of Landscape Architecture **Department of Transportation** Ydanis Rodriguez, Commissioner; Margaret Forgione First Deputy Commissioner; Keith Bray, Brooklyn Borough Commissioner; Joseph Fuccillo, Deputy General Counsel; Julie Bero, Chief Strategy Officer; Nick Benson, Chief Communications Officer and Deputy Commissioner; Tomas Garita, Executive Director For Strategic Communications; Jaclyn Whitney, Director of Digital Communications and Public Art; Angelik Vizcarrondo-Laboy, NYC DOT Art Director; Wendy Feuer, former Assistant Commissioner of Urban Art, Design + Wayfinding; Emily Colasacco, former Director, DOT Art & Event Programming; Nina (Marren) Yodice, former Director, DOT Art; Michelle Craven, Associate Deputy Commissioner Cityscape & Franchises; Tika Gurung, Assistant Commissioner Land Use; Neil Gagliardi, Director of Urban Design; Nick Pettinati, Deputy Director of Urban Design; Christina Yoo, former Senior Project Manager

## Walter Gladwin Recreation Center

**Marvel Architects** Anya Ramirez-Jimenez, Partner in charge; Guido Hartray, Partner; Martha Bush, Director; Wilfredo Rodriguez-Joglar, Architect; Emily Richards, Architect; Sarah Beaudoin, Designer; Daniel Eizo, Designer; Yadiel Rivera, Partner, Landscape; Juan Guzman Palacios, Associate, Landscape **Silman** Justin Der Herder, Principal; Sahil Chaudhary, Senior Engineer; Roy Kim, Structural Engineer **Legacy Engineers** John Rice, President & Principal; Thomas Ribarich, Senior Plumbing & Fire Protection Engineer; Irina Levina, Plumbing & Fire Protection Engineer; Jerrel Walker, Mechanical Engineer; Kiron Bowman, Chief Technologist **Collado Engineers** Miguel Quintanilla, Principal; George Aspras, Principal; Chris Mias, Principal; Jason Fallick, Electrical Engineer; John Cubillos, Junior Mechanical Engineer **Lumen Architecture** Nelson Jenkins, Project Manager; Mike Thai, Sr. Lighting Specialist; **MW Skins** Marcus Wilmers, Founding Principal; Colin Burton, Senior Façade Designer **Atelier 10** Craig Graber, Associate Director; Yuanyun (Lydia) Zhong, Design Staff **Gedeon GRC Consulting** James LaPadula, Vice President of Civil Engineering; Brian Ripley, Civil Engineer; Adil Malik, Project Manager, Civil; Yash Chowdhury, Civil Engineer; Zafar Iqbal, Director of Traffic Engineering **Cerami & Associates** Carmen Danescu, Associate Principal; Pratik Madan, Senior Associate; Brayan Morales-Medina, Associate; Bennett Terrill, Associate; Lauren Firoz, Junior Associate **JM Zoning** Rebecca Cordero, Assistant Project Manager; Kirsten Fisher, Project Manager **Department of Design and Construction** Thomas Foley, Commissioner, Office of the Commissioner; Eric Macfarlane, First Deputy Commissioner, Office of the Commissioner; Salvatore Cali Jr., Deputy Commissioner, Public Buildings; Judith Bernard, Associate Commissioner, Capital Program Delivery; Eric Boorstyn, Associate Commissioner, Architecture & Engineering; Michael Nasatsi, Assistant Commissioner, Capital Program Delivery; Irene Alpert, Program Director, Capital Program Delivery; Devang Kapadia, Deputy Director, Capital Program Delivery; Rodolfo Leyton, Project Director, Capital Program Delivery; John O'Leary, Senior Project Manager, Capital Program Delivery; Starling Keene, Executive Director, Architecture & Engineering; Ashwani Bedi, Executive Director, Architecture & Engineering; Teresa Byrne Salter, Deputy Director, Architecture & Engineering; Mandy LeBoeuf, Deputy Director, Architecture & Engineering; Yuri Birchwood-Fuentes, Architect, Architecture & Engineering; Michaela Metcalfe, Executive Director, Design and Construction Excellence **NYC Parks** Sue Donoghue, Commissioner; Iris Rodriguez-Rosa, First Deputy Commissioner; Thérèse Braddick, Deputy Commissioner, Capital Projects; Mark Focht, Deputy Commissioner & Chief Operating Officer; Margaret Nelson, Deputy Commissioner, Urban Park Service & Public Programs; Jessenia Aponte, Bronx Borough Commissioner; Emily Chase, Assistant Commissioner, Public Programs; Terence McCormick, Assistant Commissioner, Architecture & Engineering Program Management; Laura Pavidonis, Chief of Partner Project Management, Architecture & Engineering; Rebecca Byrnes, Chief of Architecture & Engineering; Nancy Prince, Chief of Landscape Architecture; Farrell Coates, Chief of Recreation, Bronx; Paul Fontana, Chief of Programming & Strategic Management; Liz Asaro, Operations Manager, Public Programs; Marlisa Wise, Team Leader for Architecture; Andrew Penzi, Team Leader for Bronx; Renata Sokolowski, Director of Landscape Architecture for Bronx; Katerine Borrome, Director of Capital Projects, Bronx; Julie Fisher, Deputy Director, Architecture; Devin Philips, Program Administrator for Parks Sponsored Projects; Tyler Wilcox, Director, Bronx Forestry; Gregory Haber, Deputy Director, Bronx Forestry; Ariane Trani, Deputy Director, Central Forestry; Emily Humes, Director of Environmental Review; Kay Zias, Director of Environmental Remediation; Chris Haun, Director of Sustainable Facilities; Vanessa Valdes, Creative Director; Rajin Small, Stationary Engineer, Citywide Services; Christopher Noel, Accessibility Coordinator; Imelda Bernstein, Senior Project Manager, Landscape Architecture; Sheena Brown, Public Design Commission Liaison

## ***What do I See to be Except Myself by Oasa Duverney***

Oasa DuVerney, Artist; Hanna Alvgren, New Project; Peter Kaufmann, Principal, Glasmalerei Otto Peters GmbH; Jan Peters, Managing Director, Glasmalerei Otto Peters GmbH; Michael DiCarlo, Fabrication Design **Allied Works** Lourenzo Amaro, Project Manager; Gabriel Smith, Principal **Department of Cultural Affairs** Laurie Cumbo, Commissioner; Alton Murray, Deputy Commissioner; Michael Krevet, Chief of Staff; Lance Polivy, General Counsel; Kendal Henry, Assistant Commissioner, Public Art & PDC Liaison; Sergio Pardo Lopez, Director, Percent for Art & PDC Liaison; David Mandel, Community Liaison, Public Art **Department of Design and Construction** Thomas Foley, Commissioner, Office of the Commissioner; Eric Macfarlane, First Deputy Commissioner, Office of the Commissioner; Salvatore Cali Jr., Deputy Commissioner, Public Buildings; Joseph Crupi, Associate Commissioner, Public Buildings; Michaela Metcalfe, Executive Director, Design and Construction Excellence; Xenia Diente, Public Art Deputy Director, Design and Construction Excellence; Dora Blount, Senior Design Liaison & Public Art Manager, Design and Construction Excellence; Sarah Yehuda, Public Art Manager, Design and Construction Excellence; Debbie Vandermark, Design Liaison, Design and Construction Excellence; Natalia Rossi, Junior Project Manager, Design and Construction Excellence; Sergio Vazquez, Program Director, Libraries, Capital Program Delivery; Antonios Milatos, Deputy Director, Libraries, Capital Program Delivery; Ahmed Hermas, Deputy Director, Libraries, Capital Program Delivery; Dina Elkaliny, Junior Project Manager, Libraries, Capital Program Delivery; Eric Boorstyn, Associate Commissioner, Architecture & Engineering; Starling Keene, Director, Architecture & Engineering; Maria Puternicki, Reviewer, Architecture & Engineering; Joseph LePique, Chief, Historic Preservation, Architecture & Engineering; Ashwani Bedi, Director, Architecture & Engineering; Kossi Ahouissi, Deputy Director, Architecture & Engineering **Brooklyn Public Library** Linda E. Johnson, President and CEO; Cora Fisher, Manager/Curator of Visual Art Programming; Philip Jenkin, Project Manager, Architecture; Sonya Covington, Capital Project Manager; Sueann Bowen, Capital Projects Coordinator & Public Design Commission Liaison

## **Queensbridge Baby Park**

**NYC Parks Capital Design Team** Frank Varro, Landscape Architect, Queens Team; Nancy Prince, Chief of Landscape Architecture; Eric Mattes, Team Leader, Queens Team; James Mituzas, Director of Landscape Architecture, Queens Team; Diane Dreier, former Director of Landscape Architecture, Queens Team; Nicholas Magilton, former Deputy Director of Landscape Architecture, Queens Team; Justin Opalka, Deputy Director of Landscape Architecture, Queens Team **NYC Parks** Sue Donoghue, Commissioner; Thérèse Braddick, Deputy Commissioner for Capital Projects; Mark Focht, Deputy Commissioner & Chief Operating Officer; Jacqueline Langsam, Queens Borough Commissioner; Vincent Cirrito, former Assistant Commissioner, Landscape Architecture Program Management; Meredith Griffin, Chief of Landscape Program Management; Meira Berkower, Chief of Staff, Queens; Ruby Wei, Director of Specifications & Estimating; Chihkai Chang, Specifications & Estimating; Raymond Palmares, Deputy Director of Engineering; Heidi Maschino, Senior Civil Engineer; Nader Mansour, Lead Electrical Engineer; Samir Basili, Electrical Engineer; Ryan Wilson, Environmental Project Manager; Ilya Kliuchnik, Deputy Director of Survey; Brenda Curtis, Capital Arborist; Kyle Walsh, former Senior Forester; Chris Noel, Accessibility Coordinator; Sheena Brown, Public Design Commission Liaison **McLaren Engineering Group** Jennifer Cunney, Project Engineer

# A Special Letter: *Celebrating Our Commissioners*

Dear Friends and Colleagues,

As we celebrate eleven outstanding projects at our 42nd Annual Awards for Excellence in Design, I also want to express my deep appreciation for our eleven commissioners who serve pro bono and bring their diverse expertise and unwavering dedication to every project they review. Their insights and careful deliberations have been instrumental in shaping the exemplary designs we honor today, as well as the many other projects we review each year.

The impact of our commissioners on a diverse range of public projects throughout New York is far-reaching. From parks and waterfront developments to libraries and public art installations, our commissioners offer meaningful feedback and advocate for equitable designs that elevate both form and function.

Our commissioners uphold adaptable and maintainable designs that ensure our city's public spaces will remain beautiful and functional for years to come. Through the design review process, our commissioners support innovative sustainability measures, including the use of low-carbon materials and green infrastructure. They champion designs that consider community input, environmental stewardship and resilience, long-term functionality, and durability.

Through their thoughtful input, our commissioners help shape projects that not only meet the immediate needs of communities, but also contribute to the long-term vitality of our city. On behalf of the Public Design Commission and the City of New York, thank you to all our commissioners—past and present—for your service, your insights, and your unwavering commitment to excellence in public design.

With deepest appreciation,



**Sreoshi Banerjea**, Executive Director  
Public Design Commission





