

DESIGN  
AWARDS



May 11, 2017

Dear Friends:

It is a pleasure to welcome everyone to the New York City Public Design Commission's 35th Annual Awards for Excellence in Design.

New York has always been at the forefront of progress in the fields of art, architecture, engineering, and design, and we are the proud home to an outstanding array of iconic buildings, parks, open spaces, bridges, and infrastructure. This month, the creativity that defines the five boroughs will be on full display at the fifth annual NYCxDESIGN, a citywide celebration of innovative art and design from around the world. In conjunction with that engaging showcase, the Commission is hosting today's event to recognize public projects that exemplify my administration's mission to improve quality of life for New York's diverse residents and build a more resilient, more sustainable and more equitable city.

This year's event will celebrate outstanding projects from the last two years, including a library and environmental education center to encourage ecological stewardship, a reconstructed streetscape that will revitalize a business district and protect pedestrians, a new police precinct, and an imaginative mural and sculptures that will beautify our parks. As we continue to improve our city through our #OneNYC plan, I am delighted to join everyone gathered in applauding the talented artists, design professionals, and City agencies being honored for their efforts to enhance our urban landscape and strengthen communities across the city. Together, we will advance our city's status as a global hub of culture and innovation and forge a brighter future for all New Yorkers.

Sincerely,

A handwritten signature in black ink, appearing to read "Bill de Blasio". The signature is fluid and cursive, with a long horizontal stroke at the end.

Bill de Blasio  
Mayor

**Bill de Blasio**

Mayor

**Alicia Glen**

Deputy Mayor for Housing and Economic Development

**Public Design Commission of the City of New York****Signe Nielsen**, President

Landscape Architect

**Philip E. Aarons**, Vice President

Lay Member

**Laurie Hawkinson**

Architect

**Manuel Miranda**

Lay Member

**Richard Moore**

Brooklyn Museum

**Susan Morgenthau**

The New York Public Library

**Ethel Sheffer**

Mayor's Representative

**Dr. Merry H. Tisch**

The Metropolitan Museum of Art

**Shin-pei Tsay**

Lay Member

**Mary Valverde**

Sculptor

**Hank Willis Thomas**

Painter

Justin Garrett Moore, Executive Director

Keri Butler, Deputy Director

Grace Han, Director of Capital Projects

Rachel Guinn, Senior Project Manager

Julianna Monjeau, Archivist & Records Manager

Rebecca Macklis, Project Manager

Mary Beth Betts, Tour Manager

Gail Cornell, Gary Deane, Gail Green, Deirdre LaPorte,

Patricia Orfanos, Docents

**Public Design Commission of the City of New York**

The Public Design Commission reviews permanent works of architecture, landscape architecture, and art proposed on or over City-owned property. As established by the New York City Charter in 1898, the Commission comprises 11 members, and includes an architect, landscape architect, painter, and sculptor as well as representatives of the Brooklyn Museum, Metropolitan Museum of Art, New York Public Library, and the Mayor.

**Annual Awards for Excellence in Design**

Since 1983, the Design Commission has recognized outstanding public projects with its Awards for Excellence in Design. The winning projects, which are selected from the hundreds of submissions reviewed by the Commission the previous year, exemplify the City's highest design standards. This year's awards ceremony is taking place at New York City Hall.

**New York City Hall**

New York's City Hall is one of the oldest continuously used City Halls in the nation that still houses its original governmental functions. Designed by Joseph François Mangin and John McComb Jr. and completed in 1812, it is one of the finest architectural achievements of its period.

The Landmarks Preservation Commission designated City Hall an individual landmark in 1966 and its central rotunda an interior landmark in 1976. In 1993, the African Burial Ground and the Commons, which includes City Hall and the surrounding park, was designated a Historic District.

The Public Design Commission offers free tours of City Hall on weekdays.

Special thanks to the Mayor's Print Shop, Food Trends Catering and Events, Mahnaz Ispahani Bartos, James Stewart Polshek, Ann G. Tenenbaum, Peter Wertheim, Vikram Viswanathan, Mary B. Clarke, Toby Allan Schust, and Alicia West.



# DESIGN AWARDS

35TH ANNUAL AWARD RECIPIENTS

Thursday May 11, 2017 | New York City Hall

# Bomb Squad Building

100A Rodman's Neck Path, Pelham Bay Park, Bronx

A project of the Department of Design and Construction and the New York Police Department

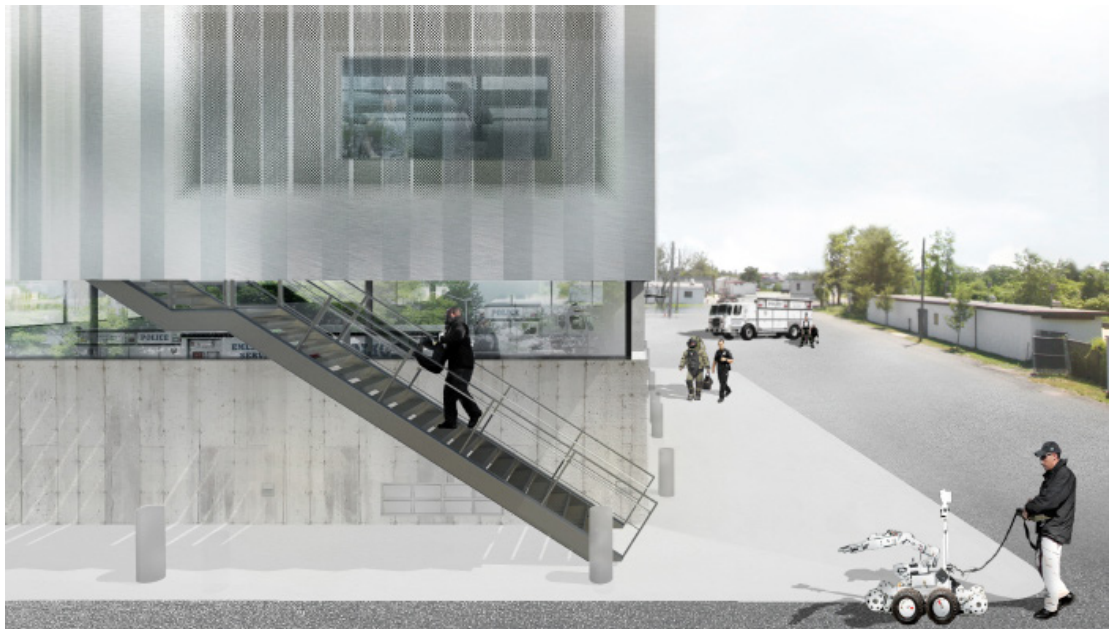
## **Rice + Lipka Architects** **Liz Farrell Landscape Architecture**

Located in a flood-vulnerable site adjacent to Pelham Bay Park, NYPD's Bomb Squad training facilities were badly damaged by Hurricane Sandy. This new 10,700 square-foot resilient structure elevates critical program elements above the floodplain. At the ground floor, cast-in-place concrete walls create a resilient structure and vents allow flood waters to flow through without damaging the building. Energy-efficient mechanical units and photovoltaic panels are concealed by a subtly sloping façade and roof. Where the original structure once was, native plants will be reintroduced to restore the shoreline ecology.

The building's highly-insulated aluminum façade visually hovers above its concrete base, separated by a continuous clerestory band that admits daylight to the ground level. An open floor plan on the second level is situated around a central skylit space, and positions critical functions, including offices and robot repair, around an exposed stair connecting to the ground floor area for emergency vehicles. Overhead, a central opening extends to a large tapered light well that channels sunlight to both levels. This secure facility builds a sense of community for its staff, visitors, and technicians, while providing sustainability measures designed to meet the City's 80x50 greenhouse gas reduction goal.

## **Design Team**

**Rice+Lipka Architects** Lyn Rice, Principal; Astrid Lipka, Principal; Benjamin Cadena, Design Director; Joe Malboeuf, Senior Project Architect; Taylor McNally-Anderson, Project Manager; Shannon Sturm, Project Manager; Alexis Kraft, Project Manager; Lindsay Harkema, Project Manager; Yiyao Liu, Senior Designer; Andrew Mack, Senior Designer; Guanyi Zhang, Senior Designer; Ahmad Khan, Designer; Alice Song, Designer; Alex Siu, Designer; **Liz Farrell Landscape Architecture** Liz Farrell, Principal; Paul Collins, Project Manager; **Robert Silman Associates** Joseph Tortorella, Partner in Charge; Justin Den Herder, Associate; Greg Koch, Engineer; **Plus Group Consulting Engineering** Imtiaz Mulla, Principal; Marina Solovchuk, Principal; David Goldstein, Associate; Simon Looi, Associate; Dilip Yadav, Engineer; Kevin Mak, Engineer; Natalia Beskina, AutoCAD Manager; **Philip Habib & Associates** Sue McCoy, Principal; Hunter Newman, Engineer; **Langan Engineering** Alan Poeppel, Managing Principal; Sukh Guring, Project Manager; Jared Green, Senior Associate; **Richard Shaver Architectural Lighting** Richard Shaver, Principal; **Shen Milsom Wilke** Steve Emspak, Partner; Steven Sorrenti, Senior Consultant, Security; Matt Tibbals, Senior Consultant, Telecom; **Iros Elevator Design Services** Michael Sori, Partner; Sheryl Sori, Partner; **Department of Design and Construction** Dr. Feniosky Peña-Mora, Commissioner; Thomas Foley, Deputy Commissioner of Public Buildings; Christine Flaherty, Associate Commissioner of Public Buildings; Eric Boorstyn, Associate Commissioner of Architecture & Engineering; Margaret Castillo, Chief Architect; Vincent Falkowski, Executive Director for Uniform Structures; Rebecca Clough, Assistant Commissioner for Police Unit; Lucy-Lai Wong, Program Director for Police Unit; Parviz Lotfi, Deputy Program Director for Police Unit; Hossain Taimur, Senior Project Manager; Fé Rodriguez-Marquez, Senior Project Manager; Yuri Birchwood-Fuentes, Architecture and Engineering Team Leader; Rick Bell, Executive Director of Design and Construction Excellence; Michaela Metcalfe, Director of Design and Construction Excellence; Becky Yurek, Design Liaison; **New York Police Department** James P. O'Neill, Commissioner; Vincent Grippo, Deputy Commissioner, Management and Budget; Dennis DeQuatro, Deputy Chief, Facilities Management Division; Philip J. Heller, Director, Capital Construction Unit; Detective Dean Anagnostos, Project Manager; Jose Paredes, Project Manager; Victor Ferrante, Design Liaison



# Treetop Adventure Zipline and Nature Trek

The Bronx Zoo, 2300 Southern Boulevard, Bronx

A project of the Department of Cultural Affairs, the Department of Parks & Recreation, and the Wildlife Conservation Society

## **Tree-Mendous Wildlife Conservation Society Exhibition and Graphic Arts Department**

The Treetop Adventure Zipline will provide visitors with a new perspective of the Bronx Zoo – from 45 feet above the Bronx River and its surrounding forest. Wooden platforms, one on either side of the river, connect 375 feet of zipline cable. Participants will launch from the west bank of the river, zip across, and then return on a second set of racing zip lines. This active adventure will reach new audiences, build a stronger conservation ethic among visitors by bringing them closer to local nature, and support the Wildlife Conservation Society's mission to inspire young adults to protect the natural world.

Built from natural materials that blend into the landscape, Nature Trek includes a 14-foot-high netted course and ground-level activity zone. Visitors will navigate a series of 12 unique, enclosed bridges – balancing on a narrow beam, weaving between vertical obstacles, hopping from step to step, and climbing wiggling surfaces. Platforms themed as a tree house and bird's nest are built high in the trees within the course. On the ground, an activity zone engages kids in a series of activities that mimic and explore animal behaviors.

## **Design Team**

**Tree-Mendous** Gerhard Komenda, Chief Executive Officer; **Wildlife Conservation Society Exhibition and Graphic Arts Department** Susan A. Chin FAIA, Vice President of Planning & Design and Chief Architect; Shane LeClair, Creative Director; Jason Hill, Creative Director; Tonya Edwards, Landscape Project Manager; **Proper & O'Leary Engineering** Daniel B. Proper, Principal and Project Engineer; **Department of Cultural Affairs** Tom Finkelppearl, Commissioner; Kristin Sakoda, Deputy Commissioner and General Counsel; Edwin Torres, Deputy Commissioner; Andrew Burmeister, Assistant Commissioner, Capital Projects; David Bryant, Capital Projects Manager; **Department of Parks & Recreation** Mitchell J. Silver FAICP, Commissioner; Thérèse Braddick, Deputy Commissioner for Capital Projects; Adena Long, Deputy Commissioner for Urban Park Service and Public Programs; Iris Rodriguez-Rosa, Bronx Borough Commissioner; Lawrence Scoones, Bronx Borough Chief of Operations; Michelle Martell, Bronx Borough Chief of Staff; Nancy Prince RLA, Deputy Chief of Design; Sherri Rosenberg, Deputy General Counsel; Michael Grattan, Deputy Chief of Operations; Daniel Grulich, Director of Interagency Coordination; Zev Reuter, Bronx Borough Director of Forestry; Tristan Porto, Senior Project Manager for Design; Christopher Noel, Accessibility Coordinator; Michael Ortiz, Project Development Coordinator; Rachel Berkson, City Planner, Interagency Coordination; Quanika Stover, Forester; Sheena Brown, Design Commission Liaison; Michael Kralovich, Capital Projects Analyst; **Wildlife Conservation Society** Antonia M. Grumbach, Chair of the Board; Cristián Samper, President & Chief Executive Officer; Robert G. Menzi, Executive Vice President and Chief Operating Officer; James J. Breheny, Executive Vice President, Zoos and Aquarium & General Director; Niko Radjenovic Vice President, Business Services





# Greenpoint Library and Environmental Education Center

107 Norman Avenue, Brooklyn

A project of the Brooklyn Public Library

## **Marble Fairbanks Architects** **SCAPE Landscape Architecture**

The Greenpoint Library and Environmental Center replaces an existing, outdated one-story library, providing significantly enlarged indoor and outdoor space to house everyday library use and programming for the exploration of the environment. The facility includes reading rooms for all ages, small public meeting rooms, lab space for interactive projects, and a large community event space. Exceeding LEED Silver goals, the center will become a demonstration project for innovative approaches to sustainable design.

The transparent glass facades on the southern and western approaches direct visitors to the entrance and reveal the activities within the building. The outdoor plaza offers an engaging public space that demonstrates sustainability with native plants and bioswales, and reinterprets the environmental history of the region with glaciated rock outcroppings. Two rooftop gardens feature outdoor gathering and workspaces, demonstration planters, and a rainwater harvesting tank. Additionally, the branch will leverage its proximity to Newtown Creek and the growing group of environmentally-focused, community-based organizations to highlight its education programs.

## **Design Team**

**Marble Fairbanks Architects** Karen Fairbanks AIA LEED AP, Partner; Scott Marble AIA, Partner; Nicholas Desbiens AIA LEED AP, Project Architect; Jason Roberts RA, Project Manager; Ben Hait, Architect; Keenan Korth, Designer; Peter Adams, Designer; Spenser Krut, Designer; Lauren Espeseth, Designer; **SCAPE Landscape Architecture** Kate Orff, Partner in Charge; Gena Wirth, Design Principal; Martin Harwood, Senior Associate, Project Manager; Michy McCreary, Associate; David Hanrahan, Landscape Designer; Grace Miller, Landscape Designer; John Donnelly, Technical Principal; Hannah Gold, Intern; **Brooklyn Public Library** Linda E. Johnson, President and Chief Executive Officer; Brett D. Robinson, Executive Vice President, Finance and Administration; Nicholas A. Gravante, Chair of the Board of Trustees; Kyle E. Kimball, Chair of Capital Planning Committee; Lisa G. Rosenblum, Chief Librarian; Ames O'Neill, Project Manager; George Joseph, Design Commission Liaison





# Double Sun by Mary Temple

McCarren Park Play Center, 776 Lorimer Street, Brooklyn

A project of the Department of Cultural Affairs' Percent for Art Program and the Department of Parks & Recreation

## Mary Temple

Gracing the northeast and southwest corners of McCarren Park Pool's dramatic archway entrance, Mary Temple's installation creates a subtle and elegant visual disturbance. At first glance, the two paintings appear to be bright shards of light, raking the stucco and spreading shadows of nearby trees. However, the shadow-shapes are actually painted translations of Juneberry, Hawthorn, and other local trees that thrive throughout the surrounding park.

The title, *Double Sun*, is a reference to the dual passages of light that can be seen in the archway – an impossibility in the natural world. The title also alludes to the childlike wish for never-ending summer days. *Double Sun* is a celebration of those days full of life, bright light, lush trees, and the warm feeling of sunshine on skin. As a reminder of such joys, these highly-realistic paintings will shine continuously on the McCarren Park Pool entryway throughout every cloudy day, rainstorm, and blizzard.

## Design Team

**Mary Temple**, Artist; **Department of Cultural Affairs** Tom Finkelpearl, Commissioner; Kristin Sakoda, Deputy Commissioner and General Counsel; Edwin Torres, Deputy Commissioner; Andrew Burmeister, Assistant Commissioner for Capital Projects; Kendal Henry, Percent for Art Director; Reina Shibata, Percent for Art Deputy Director, Design Commission Liaison; **Department of Parks & Recreation** Mitchell J. Silver FAICP, Commissioner; Thérèse Braddick, Deputy Commissioner for Capital Projects; Martin Maher, Brooklyn Borough Commissioner; Kevin Jeffrey, former Brooklyn Borough Commissioner; Nancy Prince RLA, Deputy Chief of Design; Katherine O'Malley, Director of Architecture; Jonathan Kuhn, Director of Art & Antiquities; Deborah Howe, Associate Counsel; Sheena Brown, Public Design Commission Liaison; Michelle Langlie, Preservation Project Manager





# FIT New Academic Building

Fashion Institute of Technology, 28th Street between Seventh Avenue and Eighth Avenue, Manhattan

A project of the Department of Education and the Fashion Institute of Technology, State University of New York

## SHoP Architects MNLA

Sited at the northern edge of the campus, FIT's new academic building will reflect a commitment to community engagement and welcome the public into the life of the college. The ten-story, 110,000-square-foot structure will provide much-needed smart classrooms, textile labs, administrative offices, and the first dedicated student life hall on the campus in nearly two decades. The design embodies a transparency that reflects the college's vision of openness, exploration, and the robust exchange of ideas across many platforms.

The tension-based structural façade system includes wood-clad steel supports and woven metal panels deployed as an ornament to express the creative activities within the college. Through the building's glass façade, the articulated metal paneling of the abutting 1959 Marvin Feldman Center will be visible. Internally, the two buildings will be connected, creating a new passageway from 28th Street to 27th Street. This new dynamic building will animate the streetscape and present the creative life within the campus to the surrounding Chelsea community.

## Design Team

**SHoP Architects** William Sharples, Partner; Chris Sharples, Partner; Corie Sharples, Partner; Ayumi Sugiyama, Director of Cultural Projects; Sameer Kumar, Director of Enclosure Design; Joe Hand, Technical Director; Steve Pitman, Project Director; Beth Eckels, Associate; Daniel Jacobs, Associate; Alexis Burson Nichol, Associate; Alex Woodhouse, Associate; Ben Salance, Associate; Blair Cranston, Designer; Shuping Liu, Designer; Sophie Eichner, Junior Designer; Yonathan Moore, Junior Designer; **MNLA** Molly Bourne, Principal; Rae Ishee, Landscape Designer; **BuroHappold Engineering** Craig Schwitter, Partner; Stephen Curtis, Principal; Bob Kearns, Associate; Mark Paskus, Junior Associate; Nicole Press, Structural Engineer; **Jacob Feinberg Katz & Michaeli Consulting Group** Cindy Feinberg, Partner; Christian Wilde, Engineer; **Wener Sobek New York** Silvia Prandelli, Chief Operating Officer; Enrica Olivia, Leader of WSNY Structures Group; Laurence De-Bary, Façade Designer; **Tillotson Design Associates** Suzan Tillotson, President; Mitul Parekh, Principal; Sara McElroy, Designer; **Shen Milsom Wilke** Steven Sorrenti, Senior Consultant, Security; Peter Berry, Associate Principal, Audio Visual; Colin O'Gallagher, Associate, Information Technology; Jarrod Whittington, Senior Consultant, Acoustics; **Philip Habib & Associates** Phillip A. Habib, Principal; Sue McCoy, Principal; **Via Collective** Katie Osborn, Principal; **Van Deusen & Associates** Rick Sayah, Vice President; Brian Schaulewicz, Associate Designer; **Department of Education** Carmen Fariña, Chancellor; Thomas Taratko, Design Commission Liaison; James Dekeles, Design Commission Liaison; **Fashion Institute of Technology, State University of New York** Dr. Joyce F. Brown, President; Sherry Brabham, Vice President, Finance and Administration; Loretta Lawrence Keane, Vice President, Communications and External Relations; Mark Blaifeder, Associate Vice President, Finance; Bayard King, Acting Associate Vice President, Finance; Natalie Polvere, Acting Assistant Vice President, Administration; Pablo Salinas, Capital Budget Analyst; Cheri Fein, Executive Director, Public and Media Relations; Lisa Wager, Director, Government and Community Relations; George Jefremow, Executive Director, Facilities; Allen King, Associate Executive Director, Facilities; June Ng, Director, Space Planning and Management; Stephen Tuttle, General Counsel





# Downtown Far Rockaway Streetscape

Central Avenue, Mott Avenue, Beach 19th Street, Beach 20th Street, Beach 21st Street, and Beach 22nd Street, Queens

A project of the Department of Design and Construction, the Department of Transportation, and the Department of Parks & Recreation

## W Architecture and Landscape Architecture

The Downtown Far Rockaway Streetscape project is a truly commendable collaborative effort between numerous City and State agencies, community groups, and elected officials. After Hurricane Sandy in 2012, it became imperative to redevelop the Downtown Far Rockaway central business district and transportation hub. The street reconstruction plan on the Rockaway peninsula signifies a focus on environmental sustainability and resiliency in the wake of extreme weather events. The overarching goals of the design are to reinforce Mott Avenue as a ‘village main street’ with a connection to existing neighborhood assets and recent public improvement projects, such as the reconstruction of the Far Rockaway Queens Branch Library.

Incorporating Vision Zero strategies, this comprehensive streetscape design will foster a safer, more inviting pedestrian experience and also employ sustainable, energy-efficient, and visually appealing street design elements such as varied street trees with connected tree beds, and permeable pavers. The scope includes the full reconstruction of streets and sidewalks, new plaza and public open spaces, wayfinding, and the installation of new storm and sanitary sewers throughout the downtown area.

## Design Team

**W Architecture and Landscape Architecture** Barbara Wilks, Principal-In-Charge, Lead Design; Tyler Silvestro, Project Manager; Chieh Huang, Designer; Misako Murata, Landscape Architect; **Thornton Thomasetti** James Quinn, Principal-In-Charge, Senior Traffic Engineer; Sandra Forero, Senior Civil Engineer; Joseph Pontillo, Traffic Engineer; **Cowie and Associates** Paul Cowie, President, Arborist; **AECOM** Michael Wulforst, Transportation Engineer; Oliver Ernhofer, Project Manager; **Nelson\Nygaard** William Sherman, Project Planner; **Rockaway Development and Revitalization Corporation** Kevin W. Alexander MPA, President and Chief Executive Officer; Valerie West, Vice President of Operations, Director of Community Affairs & Government Relations; **Governor’s Office of Storm Recovery** Claudia Filomena, Director, Community Reconstruction Program; Chelsea Muller, Senior Program Manager; **Mayor’s Office of Recovery and Resiliency** Carrie Grassi, Deputy Director, Planning; Cherry Mui, Program Manager; **Department of Design and Construction** Dr. Feniosky Peña-Mora Commissioner; Eric MacFarlane, Deputy Commissioner of Infrastructure; Yun P. (Dino) Ng, former Associate Commissioner of Infrastructure; Margaret Castillo, Chief Architect; Mohsen Zargarelahi, Assistant Commissioner of Infrastructure; Herve Mathelier, Director of Infrastructure Design; Bob Pour-Azar, former Director of Infrastructure Design; Rhiannon Weitowitz, Engineer-In-Charge; Nayeem Ameen, Project Engineer; Polash Datta, Project Engineer; Dave Condron, Design Liaison; Rick Bell, Executive Director of Design and Construction Excellence; Michaela Metcalfe, Director of Design and Construction Excellence; Becky Yurek, Design Liaison; **Department of Transportation** Polly Trottenberg, Commissioner; Margaret Forgione, Chief Operating Officer; Joseph Jarrin, Executive Deputy Commissioner, Strategic and Agency Services; Nicole Garcia, Queens Borough Commissioner; Al Silvestri, Deputy Queens Borough Commissioner; Rosa Rijos, Assistant Commissioner, Roadway Capital Program Management; Wendy Feuer, Assistant Commissioner Urban Design, Art and Wayfinding; Kara Kua-Lam, Director of Capital Project Engineering, Roadway Capital Project Management; Suchi Sanagavarapu, Director of Resiliency Planning and Management, Roadway Capital Program Management; Neil Gagliardi, Director of Urban Design; Erin Maciel, Landscape Architect; Craig Chin, Queens Borough Planner; Betsy Jacobsen, Queens Borough Planner, Roadway Capital Project Management; Ron Bramsen, Project Manager, Roadway Capital Project Management; Laura MacNeil, Project Manager, Special Projects; Nick Pettinati, Design Commission Liaison; **Department of Parks & Recreation** Mitchell J. Silver FAICP, Commissioner; Thérèse Braddick, Deputy Commissioner for Capital Projects; Dorothy Lewandowski, Queens Borough Commissioner; Nancy Prince RLA, Deputy Chief of Design; Daniel Grulich, Director of Interagency Coordination; Adriana Jacykewycz, Director of Queens Horticulture; Jonathan Landsman, Interagency Coordinator; Allison Huggan, Forester; Robert Spampinato, former Forester; Sheena Brown, Design Commission Liaison





# Woodside Office, Garage, and Inspection Facility

24-55 Brooklyn-Queens Expressway West, Queens

A project of the Department of Design and Construction and the Taxi and Limousine Commission

## **TEN Arquitectos** **W Architecture and Landscape Architecture**

Serving as the central inspection location for over 13,500 taxis, the renovated and expanded Woodside facility will provide a welcoming and dignified experience for drivers and other members of New York City's transportation industry. The project will reduce queuing times and increase inspection capacity by more than 200 cars per day and expands office space for staff.

The project replaces the existing office block with an elevated, louver-screened structure spanning over the existing eight-lane garage. The reconfiguration of the ground level creates additional traffic lanes, reduces congestion, and expedites operations on site while improving traffic flow on the adjacent roadway. Lifting the office block off the ground minimizes the footprint of the structure and optimizes daylight and views for the offices above.

The landscape design provides planted outdoor space for rest and gathering, adds vegetation to an otherwise fully paved site, absorbs stormwater with planted bioswales, and creates a coherent identity for the facility along its street front. Atop the garage, a green roof with meadow grass and trees captures stormwater and creates outdoor space for personnel.

## **Design Team**

**TEN Arquitectos** Enrique Norten, Principal; Andrea Steele, Project Architect; James Carse, Project Manager; Ekta Desai, Senior Designer; Noy Ramon, Intermediate Designer; Sara de Miguel, Intermediate Designer; Jae Jun Lee, Junior Designer; Andrew Schalk, Junior Designer; Yiwei He, Junior Designer; Jamie Choi, Intern; **W Architecture and Landscape Architecture** Barbara Wilks, Principal; Julia Howe, Landscape Architect; **Langan Engineering** Christopher Vitolano, Principal-In-Charge; James Harley, Project Manager; David LoFrisco, Civil Engineer; Jared Green, Associate Geotechnical Engineer; Terrence Cheung, Project Manager Geotechnical Engineer; Adnan Pasha, Associate Traffic Engineer; Denis Molner, Senior Project Manager, Traffic Engineer; Brian Weinberg, Project Manager, Traffic Engineer; Matt Sipple, Project Manager, Survey; Kathleen Shively, Surveyor; **WSP** Jeffrey Smilow, Executive Vice President, USA Director of Building Structures; Motaz Elfahal, Vice President; Silvain Villarroel, Senior Associate; Chengye Xu, Senior Engineer; Joonhong Lim, Project Manager; **HLB Lighting** Barbara Horton, Senior Principal; Allison Hunter, Senior Associate; Juan Acosta Zapata, Designer; **Simpson Gumpertz & Heger** Vince Cammallari, Senior Principal; Scott Bondi, Staff Consultant; Brienna Rust, Building Technology; **Dharam Consulting** Richard Wilson, Senior Associate; Wesley Ruiz, Senior Cost Consultant; **Ettinger Engineering** Waldir Alvarez, Principal; Edward Ettinger, Principal-In-Charge; Leon Beren, Senior Electrical Engineer; Yolanda Bordei, Senior Mechanical Engineer; Maria Sawchuck, Senior Plumbing & Fire Protection Engineer; Aupu Khan, Mechanical Engineer; Yiming Liu, Mechanical Engineer; Santiago Quijano, Mechanical Engineer; Mojtaba Tahiri, Electrical Engineer; Nancy Yanchapanta, Drafter; **SPN Ecology** Michael Block, President; Max Driscoll, Director, Sustainable Development; **BuroHappold Engineering** Julie Janiski, Senior Energy Analyst; Michael Marvin, Senior Energy Analyst; **Department of Design and Construction** Dr. Feniosky Peña-Mora, Commissioner; Thomas Foley, Deputy Commissioner of Public Buildings; Christine Flaherty, Associate Commissioner of Public Buildings; Eric Boorstyn, Associate Commissioner of Architecture & Engineering; Margaret Castillo, Chief Architect; Vincent Falkowski, Executive Director for Uniform Structures; Bogdan Pestka, Assistant Commissioner of Transportation Unit; Afsar Samani, Program Director for Transportation Unit; Gregory Pertsov, Deputy Program Director for Transportation Unit; Vuk Dukanac, Project Director; Yuri Birchwood-Fuentes, Architecture and Engineering Team Leader; Rick Bell, Executive Director of Design and Construction Excellence; Michaela Metcalfe, Director of Design and Construction Excellence; Becky Yurek, Design Liaison; **Taxi and Limousine Commission** Meera Joshi, Commissioner; Nicholas Venezia, Assistant Commissioner; Brian Switzer, Director of Operations





# The Cubes Administration and Education Building

Socrates Sculpture Park, Vernon Boulevard, Broadway, and 31st Road, Queens

A project of the Department of Parks & Recreation and Socrates Sculpture Park

## LOT-EK

The Cubes Building is a 2,640 square-foot, two-story structure comprising 18 shipping containers that will become a permanent home for Socrates Sculpture Park administration and programming. The innovative design and material choices underscore the park's history of reclamation and revitalization and its mission of presenting contemporary public art, fostering environmental stewardship, and community building.

The Cubes began as a commission by The Whitney Museum of American Art consisting of six shipping containers. When the Whitney vacated the Breuer building for its new home, the museum donated the structure to Socrates Sculpture Park.

This design expands the original structure with 12 additional containers stacked two stories high. Diagonal bands of glass along the sides and roof provide natural light and transparency, offering views of the landscape and skyline from inside and views of activities within the building from the park.

The expansion plan will fulfil the strategic and programmatic goals of the park, providing flexible multi-purpose interior spaces for educational programming, presentations and exhibits, and a shaded deck for outdoor classes.

## Design Team

**LOT-EK** Ada Tolla, Partner; Giuseppe Lignano, Partner; Reza Zia, Project Architect; Giulia De Oliveira, Designer; **Robert Silman Associates** Shinjinee Pathak PE, Senior Engineer; Phillip Tranchese, Project Engineer; **Langan Engineering** Kelly Tufts PE LEED AP, Senior Project Manager; Jennifer Imbro, Staff Engineer; **JFK&M** Chris Kang, Mechanical Engineer; Trevor Ricketts, Electrical Engineer; Luis Perez, Plumbing Engineer; **Department of Parks & Recreation** Mitchell J. Silver, FAICP, Commissioner; Thérèse Braddick, Deputy Commissioner for Capital Projects; Dorothy Lewandowski, Queens Borough Commissioner; Nancy Prince RLA, Deputy Chief of Design; Kathleen O'Malley, Director of Architecture; Jonathan Kuhn, Director of Art & Antiquities; Katherine Riley, Project Manager; Sheena Brown, Design Commission Liaison; **Socrates Sculpture Park** John Hatfield, Executive Director, Socrates Sculpture Park; Katie Denny Horowitz, Director of External Affairs





# SPECIAL RECOGNITION AWARD

## Department of Environmental Protection Green Infrastructure

Upstate Watershed

A project of the Department of Environmental Protection

New York City's Department of Environmental Protection is tasked with delivering more than one billion gallons of pristine drinking water to nine million New Yorkers every day. New York City is one of only five municipalities in the country allowed by the Environmental Protection Agency to maintain an unfiltered water supply – a testament to the strength and effectiveness of DEP's efforts around watershed protection. DEP's use of green infrastructure to manage stormwater runoff in its upstate properties is a critical component of maintaining the high quality of New York City's drinking water supply.

Recent innovative solutions in upstate sites surrounding the Cross River, Croton Falls, and Kensico Reservoirs, include the restoration of creek alignments and wetlands, construction of drainage swales, stormwater detention systems, and catch basins with filter treatment systems and bypass channels, and the installation of riprap along stream banks. Each project is thoughtfully designed for the specific site context and will ultimately function as part of a larger resilient plan to reduce sediment and pollutants from entering our water supply.

### Design Team

**Department of Environmental Protection** Emily Lloyd, former DEP Commissioner; Vincent Sapienza PE, Acting Commissioner; Paul Rush PE, Deputy Commissioner for Bureau of Water Supply; Eric Landau, former Deputy Commissioner for Public Affairs; James Mueller PE, Acting Deputy Commissioner for Bureau of Engineering, Design and Construction; Alicia West, Director of Public Design Outreach; Todd West PE, Director of Planning; Maria Mandarino PE, Chief of Capital Planning; Richard Wilhelm PE, EOH Life Cycle Management, Section Chief; Zaidoun Ereifej PE, Accountable Manager for Design; Jose Nieves PE, Accountable Manager for Design; Michael Kim, Acting Design Commission Liaison, Special Assistant to the Commissioner





# SPECIAL RECOGNITION AWARD

## Tottenville Shoreline Protection

Between Conference House Park and Butler Manor Woods, Tottenville, Staten Island

A project of the Governor's Office of Storm Recovery, the Department of Parks & Recreation, the Department of Transportation, and the Dormitory Authority of the State of New York

### **Stantec** **RACE Coastal Engineering**

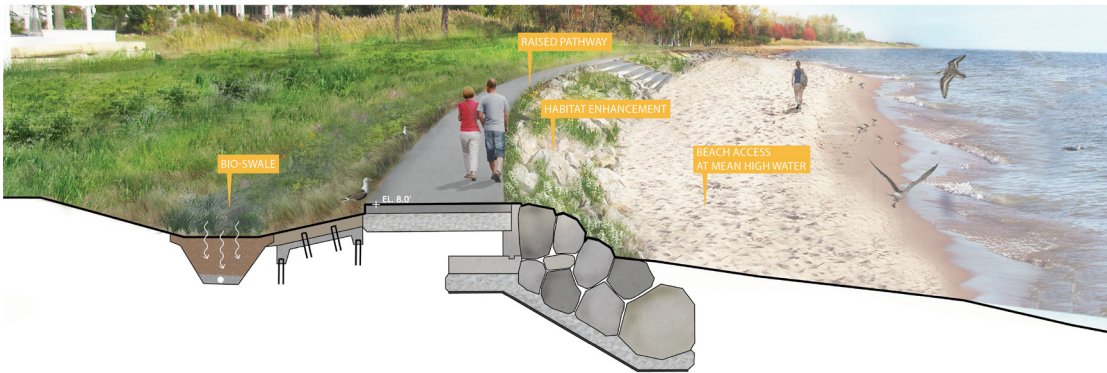
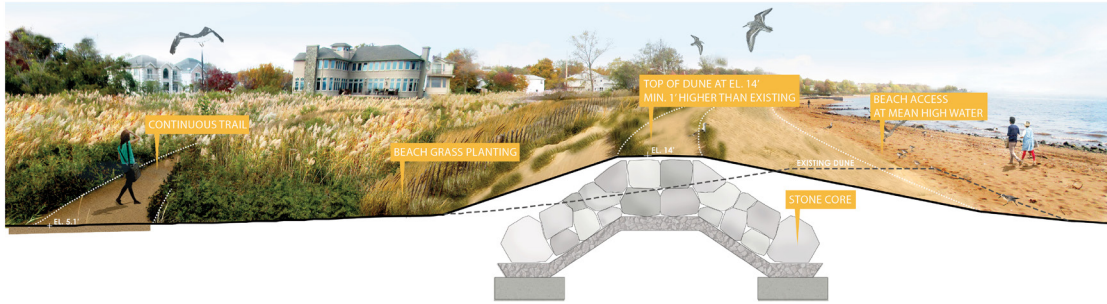
Working in tandem with the ReBuild by Design Living Breakwaters Project, the Tottenville project is one component of a layered shoreline protection system in southern Staten Island. A key programmatic goal of the project is to create an interconnected and seamless waterfront trail along the shoreline of Conference House Park to provide pedestrian access the full length of the beach, even at normal high tide. This continuous pathway will also provide access for maintenance staff to areas that have been difficult to reach in the past.

The design will reduce wave action and coastal erosion along the shoreline, while also enhancing ecosystems and public access. Materials will be chosen to complement the natural elements of the seashore, upland marshes, and maritime forest. The site-specific approach will consist of a series of measures, including wetland enhancement, eco-revetments, hardened dune systems, shoreline plantings, maritime forest restorations, and earthen berms. This allows the design to be tailored to the various reaches of the shoreline and respond to specific opportunities and constraints.

### **Design Team**

**Stantec** Donna Walcavage FASLA LEEP AP, Principal; Sara Morrison ASLA ENV SP, Project Manager, Landscape Architectural Designer; Cecilia Wang ASLA, Landscape Architectural Designer; Jenny Hamann RLA, Landscape Architect; **RACE Coastal Engineering** Devin Santa PE, Principal; Azure Dee Sleicher PE, Manager of Coastal Engineering; Christopher Eggers PE, Project Manager; Jill Pietropaolo EIT, Coastal Engineer; Carrie Walter, Senior CAD Technician; Mark Adimando EIT, Engineering Associate; **Governor's Office of Storm Recovery** Lisa Bova-Hiatt, Executive Director; Daniel Greene, General Counsel; Natalie Wright, Deputy Executive Director; Claudia Filomena, Managing Director, NY Rising Community Reconstruction Program; Alex Zablocki, Senior Program Manager; **Department of Parks & Recreation** Mitchell J. Silver FAICP, Commissioner; Thérèse Braddick, Deputy Commissioner for Capital Projects; Alyssa Cobb Konon, Assistant Commissioner for Park Planning and Development; Lynda Ricciardone, Staten Island Borough Parks Commissioner; Tom Russo, Chief of Operations; Charles Fall, Staten Island Borough Chief of Staff; Nick Molinari, Chief of Planning & Neighborhood Development; Sarah Neilson, Chief of Policy and Long-Range Planning; Marit Larson, Chief of Natural Resources; Nancy Prince RLA, Deputy Chief of Design; Fiona Akins, Senior Planner; Grace Tang, Coastal Project Manager; Adrian Smith, Staten Island Team Leader; John Kilcullen, Director, Conference House Park; William Lacurtis, Parks & Recreation Manager; Sheena Brown, Design Commission Liaison; **Department of Transportation** Polly Trottenberg, Commissioner; Margaret Forgione, Chief Operating Officer; Joseph Jarrin, Executive Deputy Commissioner, Strategic and Agency Services; Tom Cocola, Staten Island Borough Commissioner; Rosa Rijos, Assistant Commissioner, Roadway Capital Program Management; Wendy Feuer, Assistant Commissioner Urban Design, Art and Wayfinding; Neil Gagliardi, Director of Urban Design; Tika Gurung, Director of Land Use Review, Legal Affairs; Suchi Sanagavarapu, Director of Resiliency Planning and Management, Roadway Capital Program Management; Judy Chang, Coastal Resiliency Planner, Roadway Capital Program Management; Nega Lakew, Coastal Resiliency Planner, Roadway Capital Program Management; Nick Pettinati, Design Commission Liaison; **Dormitory Authority of the State of New York** Gerrard P. Bushell, President and CEO; James Dunlavy AIA, Project Manager





# SPECIAL RECOGNITION AWARD

## Conservation and Relocation of three WPA-era Murals

Cornell University/Technion-Israel Institute of Technology's applied sciences campus, 11 East Loop Road, Roosevelt Island, Manhattan

A project of the Economic Development Corporation and Cornell Tech

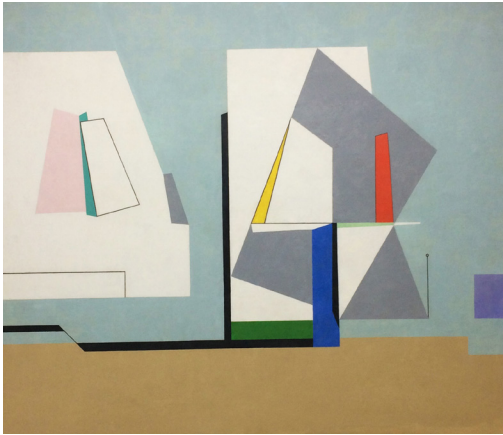
### **EverGreene Architectural Arts Fine Art Conservation Group Morphosis Weiss/Manfredi**

In the early 1940s, the Work Projects Administration (WPA) commissioned abstract murals by Ilya Bolotowsky, Dane Chanase, Joseph Rugolo, and Albert Swinden for a hospital campus on Welfare Island (now Roosevelt Island). The murals were installed in circular, light-filled rooms on the south side of the buildings. The artists were inspired by the East River views and hoped that their artworks would enliven the spaces and uplift the patients.

Since the 1950s, the murals had been painted over multiple times and were completely hidden. In 2001, the Bolotowsky mural was uncovered and conserved by Luca Bonetti as part of the Municipal Art Society's Adopt-A-Mural program. In 2013, in preparation for the demolition of the hospital to make way for the Cornell Tech campus, conservators completed a challenging and extensive search for the remaining murals. While they were unable to find the Chanase mural, the Bolotowsky, Rugolo, and Swinden murals were removed and conserved. The Bolotowsky mural will be installed in the Bloomberg Center and the Swinden mural will be installed in The Bridge building. The Rugolo mural will be placed in a future building as part of a vibrant public art program on the

### **Design Team**

**EverGreene Architectural Arts** Gillian Randell, Chief Conservator; Kim Lovejoy, Vice President, Director of Restoration; Sarah Kloze, Project Manager; Neela Wickremesinghe, Foreman; Silvano Alonso, Conservation Technician; Fernando Cameron, Conservation Technician; Elizabeth Iacullo, Conservation Technician; Elizabeth Kolligs, Conservation Technician; Kyle Utter, Conservation Technician; Forrest Filler, Safety Program; **Fine Art Conservation Group** Helen Im, Partner; Suyeon Kim, Partner; **Morphosis** Thom Mayne, Design Director; Ung-Joo Scott Lee, Project Principal; Edmund Ming Yip Kwong, Project Designer; Jerry Figurski, Project Designer; Stuart Franks, Project Designer; Luke Yoo, Project Architect, Construction; **Weiss/Manfredi** Michael Manfredi, Partner; Marion Weiss, Partner; Mike Harshman, Project Manager; Pierre Hoppenot, Project Architect; Heather McArthur, Project Architect; Sergio Saucedo, Project Architect; Joseph Vessell, Project Architect; **Economic Development Corporation** James Patchett, President; Maria Torres-Springer, former President; Lauren Brady, Senior Counsel; Keli Rosenberg, Senior Counsel; Darryl Connelly, Senior Vice President; Jose Figueroa, Vice President; Gale Rothstein, Vice President and Design Commission Liaison; Patrick Conway, Assistant Vice President; Beata Kosierb, Senior Associate; Mildred Nunez, Project Manager; Alyssa Figueras, Project Manager; **Cornell Tech** Daniel P. Huttenlocher, Dean and Vice Provost; Andrew Winters, Director of Capital Projects & Planning; Jonathan Libutti, Capital Projects Manager; Stephanie Wiles, Director, Herbert F. Johnson Museum of Art; Nancy Elizabeth Green, Curator, Herbert F. Johnson Museum of Art; Matthew Conway, Registrar, Herbert F. Johnson Museum of Art







DESIGN  
AWARDS



# DESIGN AWARDS

34TH ANNUAL AWARD RECIPIENTS

Thursday May 11, 2017 | New York City Hall

# 40th Police Precinct

East 149th Street and St. Ann's Avenue, Bronx

A project of the Department of Design and Construction and the New York Police Department

## **Bjarke Ingels Group Starr Whitehouse**

Located in the South Bronx, this new station house reinforces a commitment to serving the surrounding communities of Port Morris, Melrose, and Mott Haven, while meeting the complex programmatic requirements of the Police Department. The building's unique form comprises stacked volumes that spiral around a central atrium, visually connecting interior spaces and bringing in daylight from a rooftop clerestory. The façade alternates between solid perimeter walls and glazed reentrant corners, providing security while also affording light and views.

The 40th Precinct surpasses requirements for LEED Silver certification with green roofs, high-albedo surfaces, bike racks, low-energy LED fixtures, and low-flow plumbing throughout. An exterior courtyard at the precinct's "stress reduction room" and a basketball half-court serve to promote mental health and activity within the workplace.

Aligned with OneNYC objectives and the City's commitment to equity, the 40th Precinct includes the very first community room within a police facility. With a porous façade, this multipurpose room will provide space for classes and events, allowing the neighborhood to engage with the precinct in a way that engenders positive relationships and strengthens awareness of NYPD's commitment to the community.

## **Design Team**

**Bjarke Ingels Group** Bjarke Ingels, Founding Partner; Thomas Christoffersen, Partner; Beat Schenk, Partner; Daniel Sundlin, Partner; Sören Grünert, Associate/Project Manager; Liz McDonald, Senior Designer; Aran Coakley, Project Manager; Adam Sheraden, Senior Architect; David Sharratt, Design Assistant; Hsiao Rou Huang, Designer; Jacob Waas, Design Assistant; Jennifer Ng, Designer; Ku Hun Chung, BIM Specialist; Liyang Zhang, Design Assistant; Peter Lee, Design Assistant; Phillip MacDougall, Designer; Daisy Zhong, Designer; **Starr Whitehouse** Laura Starr FASLA, Partner; Jeffrey Poor ASLA, Principal; Jacob Lange, Senior Landscape Designer; **Tillotson Design Associates** Suzan Tillotson, President; Erin Dreyfous, Principal; Gabriela Grullon, Senior Designer; **Robert Silman Associates** Nat Oppenheimer, Principal; Thomas Reynolds, Associate; Thomas Rogg, Engineer; Dhvani Patel, Engineer; **The Facade Group** David Altenhofen, Principal; John Suter, Senior Enclosure Consultant; Jillian Burgess, Enclosure Consultant; Cosentini Associates Douglas Mass, President; Scott Ceasar, Principal in Charge; Alex Alijewicz, Vice President; Vladimir Gavrilov, Mechanical Engineer; Sudesh Bhagwandeem, Senior Associate; Michael Biebel, Electrical Engineer; Gregory Shvartsman, Vice President; David Lazzeri, Plumbing and Fire Protection Engineer; Brendan Ryan, Senior Design Engineer; David Hersko, Cadd Engineer; Roman Natenzon, Senior Engineer; Whitney Smith, Director Sustainable Services; Casey Cullen, Sustainability Coordinator; Xiaopeng Ma, Energy Analyst; **Philip Habib & Associates** Philip Habib, Principal; Adam Young, Engineer; **Carlin-Simpson & Associates** Robert B. Simpson PE, Principal; Meredith R. Anke PE, Project Engineer; **The LiRo Group** Stephen Frank, Senior Associate; **The Friday Group** Lars Hubbard, Principal; **MTWTF** Glen Cummings, Partner; **Department of Design and Construction** Dr. Feniosky Peña-Mora, Commissioner; Christine Flaherty, Associate Commissioner, Public Buildings; Vincent Falkowski, Executive Director for Uniform Structures; Rebecca Clough, Assistant Commissioner; Margaret Castillo, Chief Architect; Rick Bell, Executive Director of Design and Construction Excellence; Michaela Metcalfe, Director of Design and Construction Excellence; Lucy Wong, Program Director; Parviz Lotfi, Deputy Program Director; Fé Rodríguez Márquez, Senior Project Manager; Siglinde Stern, Team Leader; Jeffrey Au, Bureau of Environmental and Geotechnical Services; Kurt Kraemer, Site Engineering and Topographical Services; Almeta Gadsden, Capital Budget Administrator; Frances Wnuk, Contract Administrator; Kirk Tan, Director of Permits and Approvals; Becky Yurek, Design Liaison; **New York Police Department** William J. Bratton, Commissioner; Vincent Grippo, Deputy Commissioner, Management and Budget; Dennis DeQuatro, Deputy Chief, Facilities Management Division; Philip J. Heller, Director, Capital Construction Unit; Detective Daniel Diehl, Project Manager, Capital Construction Unit; Detective Dean Anagnostos, Project Manager, Capital Construction Unit; Jose Paredes, Project Manager, Capital Construction Unit; Victor Ferrante, Design Commission Liaison



# Waterfront Nature Walk by George Trakas

Newtown Creek Water Pollution Control Plant, 329 Greenpoint Avenue, Brooklyn

A project of the Department of Cultural Affairs' Percent for Art Program, the Department of Design and Construction and the Department of Environmental Protection

## George Trakas Quennell Rothschild & Partners

Located along Newtown Creek and Whale Creek, George Trakas' *Waterfront Nature Walk* was envisioned as a critical component of the awarded master plan for the Newtown Creek Water Pollution Control Plant. The project revives a long-inaccessible industrial shoreline for public use as a waterfront promenade and kayak launch.

The first phase, completed in 2007, explores the rich history of the waterway from its use by the Lenape, to the bustling 18th- and 19th-century waterfront industries, to its current context abutting New York City's largest wastewater treatment plant. These themes unfold as dramatic site features, like the 170-foot-long "Vessel" passage to the waterfront that evokes the angled timber construction of ships, trash receptacles designed to look like barrels, carefully selected plant material, and integrated didactics.

The second and third phases, currently underway, extend the walk over Whale Creek, connecting to the street grid on either side of the plant, and explore a broader history of ecology and human existence. The artist imbues public amenities with thought-provoking language, materials, and historical artifacts, such as the 385-million-year-old tree fossils unearthed at the Gilboa Dam upstate.

## Design Team

**George Trakas**, Artist; **Quennell Rothschild & Partners** Alison Shipley RLA, Partner in Charge, Lead Designer; Yuta Tsuboi RLA, Senior Landscape Architect, Project Manager; Ryan Castro, Landscape Architect; **L'Observatoire International** Hervé Descottes, Principal; Jason Neches, Project Director; Aldrin Soedarto, Lighting Designer; Papon Kasettratrat, Lighting Designer; **Greeley and Hansen/Hazen and Sawyer/Arcadis Joint Venture** Steve Gyory PE, former Partner in Charge; Jay Lovelass PE BCEE, Project Manager, Lead Civil Engineer; Marlene Finizio, Senior Civil Engineer; Sergio Sierra AIA NCARB LEED GA, Senior Architect; Richard Gilmour AICP PP, Permitting, Senior Planner; Joanne Iwaskiw; Permitting, Senior Engineer; **Greeley and Hanson** Sundaram Solai PE, Principal in Charge, Lead Civil Engineer; Matthew O'Connor P.E., Senior Civil Engineer; Norbert Viranyi PE, Senior Electrical Engineer; Brent Sevcik AIA LEED AP ENV SP, Senior Architect; **Burns Engineering** Sam Sethbhakdi PE, Senior Structural Project Manager; Charles Yuen PE, Senior Structural Engineer; Raj Garg PE, Senior Structural Engineer; David Pryor PE, Structural Engineer; Robert Dougherty, Designer; **Mueser Rutledge Consulting Engineers** Alfred Brand, former Partner; Domenic D'Argenzio, Project Manager, Structural Senior Associate; Hiren Shah, Geotechnical Senior Associate; Peter Madarasz, Supervising Geotechnical Engineer; Dimitrios Iliadelis, Senior Geotechnical Engineer; Jonathan Mendoza, Structural Engineer; Matthew Ruehle, Structural Engineer; Samuel Valdez, Structural Engineer; Matthew Goff, Structural Engineer; **Department of Cultural Affairs** Tom Finkelpearl, Commissioner; Kristin Sakoda, Deputy Commissioner and General Counsel; Edwin Torres, Deputy Commissioner; Andrew Burmeister, Assistant Commissioner for Capital Projects; Kendal Henry, Percent for Art Director; Reina Shibata, Percent for Art Deputy Director, Design Commission Liaison; **Department of Design and Construction** Dr. Feniosky Peña-Mora, Commissioner; Christine Flaherty, Associate Commissioner, Public Buildings; Vincent Falkowski, Executive Director for Uniform Structures; Rebecca Clough, Assistant Commissioner; Bogdan Pestka, Assistant Commissioner; Margaret Castillo, Chief Architect; Rick Bell, Executive Director of Design and Construction Excellence; Michaela Metcalfe, Director of Design and Construction Excellence; Richard Brotherton, Program Director; Glenn Brue, Program Director; Faye Demetracopoulos, former Project Manager; Gregory Johnson, Project Manager; Bruce Hendler, Chief Landscape Architect; Xenia Diente, Public Art Deputy Director; Dora Blount, Public Art Coordinator; Becky Yurek, Design Liaison; **Department of Environmental Protection** Emily Lloyd, former Commissioner; Vincent Sapienza, acting Commissioner; Eric Landau, former Deputy Commissioner for Public Affairs; Kenneth E. Moriarty, P.E., acting Assistant Commissioner; Nat Federici, P.E., Deputy Portfolio Manager; Igor Sagalovich, Accountable Manager; Alicia West, Director of Public Design Outreach; Michael Kim, Acting Design Commission Liaison, Special Assistant to the Commissioner





# Van Name Van Pelt Plaza/Richmond Terrace Wetlands

Richmond Terrace between Van Pelt Street and Van Name Street, Staten Island

A project of the Department of Parks & Recreation and the Department of Transportation

## Department of Parks & Recreation In-house Design

Nestled between the edge of a residential neighborhood and the working industrial waterfront of Staten Island's North Shore, this deteriorated site will be transformed into an attractive community asset with a pier that provides expansive views to the Kill van Kull and the Bayonne Bridge.

The entrance plaza at Richmond Terrace incorporates wooden guard rails, new lighting, benches, and bike racks. A path from the entrance plaza threads through a woodland area. Along the path, visitors pass a classroom-sized gathering space that can be programmed for educational use and features engraved maps that describe the evolution of the island in relation to the waterway.

Durable materials such as stone paving and concrete piles are utilized to withstand flooding, while woody understory and herbaceous planting in the wetland park increase shoreline resilience. The design prioritizes public access to the waterfront while preserving the wetlands and enhancing avian habitat.

## Design Team

**Department of Parks & Recreation** Mitchell J. Silver FAICP, Commissioner; Thérèse Braddick, Deputy Commissioner for Capital Projects; Alyssa Cobb-Konon, Assistant Commissioner for Planning and Parklands; Adena Long, Assistant Commissioner for Public Programs, former Staten Island Borough Commissioner; Lynda Ricciardone, Staten Island Borough Parks Commissioner; Kevin Quinn AIA, Chief of Architecture and Engineering; Nicholas Molinari, Chief of Planning and Neighborhood Development; Nancy Prince, RLA, Deputy Chief of Design; Todd Mitchell, former Team Leader for Staten Island; Gail Wittwer-Laird RLA, Staten Island Design Director; Owen Wells, Director of Environmental Review; Hassan Rashid, PE, Director of Engineering; Doug Sessler, Director of Landscape Construction; Bill Tai, Principal Environmental Planner; Ruby Wei, Deputy Director of Specifications & Estimates; Shastine van Vugt, Assistant Landscape Architect; Benjamin Osborne, Deputy Director of Brooklyn Forestry, formerly Capital Projects Arborist; Amy Verel, RLA, Capital Projects Arborist; Stefanie Gutierrez, Outreach Coordinator, Partnership for Parks; Amie Uhrynowski, Administrative Project Manager, former Design Commission Liaison; **Department of Transportation** Polly Trottenberg, Commissioner; Lori Ardito, First Deputy Commissioner; Tom Cocola, Staten Island Borough Commissioner; Ed Pincar, former Staten Island Deputy Borough Commissioner; Ryan Russo, Deputy Commissioner, Transportation Planning and Management; Sean Quinn, Director, Office of Bikes, Pedestrian Projects, and Public Space; Emily Weidenhof, Director of Public Space; David Breen, Project Manager; Joe Jarrin, Deputy Commissioner, Finance, Contracts, and Program Management; Rosa Rijos, Assistant Commissioner, Capital Program Management; Erica Decrescenzo, Director, Capital Planning and Project Initiation; Victoria Oyekan, Staten Island Borough Planner; Wendy Feuer, Assistant Commissioner, Urban Design, Art and Wayfinding; Neil Gagliardi, Director of Urban Design; Nick Pettinati, Design Commission Liaison; **Northfield Community Local Development Corporation** Joan Catalano, Executive Director; Kathleen Bielsa, Deputy Director; Kathleen Sforza, Economic and Community Development Coordinator; **North Shore Waterfront Conservancy of Staten Island** Beryl Thurman, Executive Director, President





# *Luminescence* by Nobuho Nagasawa

The Peninsula, Hunter's Point South Waterfront Park, 54th Avenue, Center Boulevard, 55th Avenue, and the East River, Queens

A project of the Economic Development Corporation and the Department of Parks & Recreation

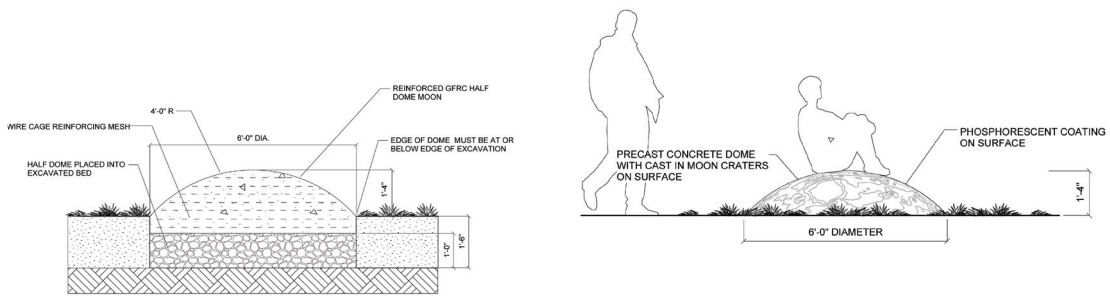
## **Nobuho Nagasawa Thomas Balsley Associates Weiss/Manfredi Architects**

Set within the curved landscape of the Hunter's Point South Peninsula lawn along the East River, these seven sculptures are both beautiful and educational. A phosphorescent material integrated into the surface of each domed shape absorbs sunlight during the day and illuminates the phases of the moon at night with a soft blue glow. Additionally, the concrete and aggregate sculptures are etched with the moon's pattern of craters, mountains, and valleys. Placed at an overlook, the sculptures offer visitors the opportunity to contemplate the many powers of the moon – from the mystical and poetic to the very real gravitational effect on the river's tidal rhythm.

## **Design Team**

**Nobuho Nagasawa**, Artist; **Thomas Balsley Associates** Thomas Balsley, Principal; Shigeo Kawasaki, Associate; Brian Staresnick, Associate; **Weiss/Manfredi Architects** Marion Weiss, Design Partner; Michael Manfredi, Design Partner; Lee Lim, Design Architect; **Tom Earnist Design** Tom Earnist, Designer; **Suzanne Randolph Fine Arts** Suzanne Randolph, Art Advisor; **Arup** Tom Kennedy, Principal; James DeMarco, Project Manager; Louise Ellis, Senior Civil Engineer; Nancy Choi, Senior Civil Engineer; Terrence Carroll, Senior Geotechnical Engineer; Shaina Saporta, Senior Structural Engineer; Tim Kaiser, Project Manager; **Economic Development Corporation** James Patchett, President; Maria Torres-Springer, former President; Brigid Keating, Senior Project Manager, Capital Program; Leonard Greco, Senior Vice President, Capital Program; Seth Myers, Director of Project Implementation; Cali Williams, Vice President, Development; Eleni Bourinaris, Assistant Vice President, Government & Community Relations; Gale Rothstein, Vice President and Design Commission Liaison; **Department of Parks & Recreation** Mitchell J. Silver FAICP, Commissioner; Thérèse Braddick, Deputy Commissioner for Capital Projects; Dorothy Lewandowski, Queens Borough Commissioner; Nancy Prince RLA, Deputy Chief of Design; Joelle Byrer, former Queens Team Leader; James Mituzas RLA, Queens Design Director; Kouichi Komuro, Project Development Coordinator; Jennifer Kao, Senior Project Manager, Planning; Jonathan Kuhn, Director, Art & Antiquities; Sheena Brown, former Deputy Director, Art & Antiquities; Nicholas Magilton, Queens Consultant Project Manager; Amie Uhrynowski, Administrative Project Manager, former Design Commission Liaison





# Dock 72

Brooklyn Navy Yard, Market Street between 6th Street and Assembly Road, Brooklyn

A project of the Brooklyn Navy Yard Development Corporation, Boston Properties, Rudin Development, and WeWork

## S9 Architecture MPFP

Dock 72 embraces rapidly emerging technological and creative industries in Brooklyn with a work environment that encourages and enables hundreds of new and maturing creative startups to flourish. The building's design celebrates the maritime and industrial history of the Brooklyn Navy Yard while providing 21st-century shared work spaces that allow tenants to contribute to the yard's renewed life as a growing industrial hub.

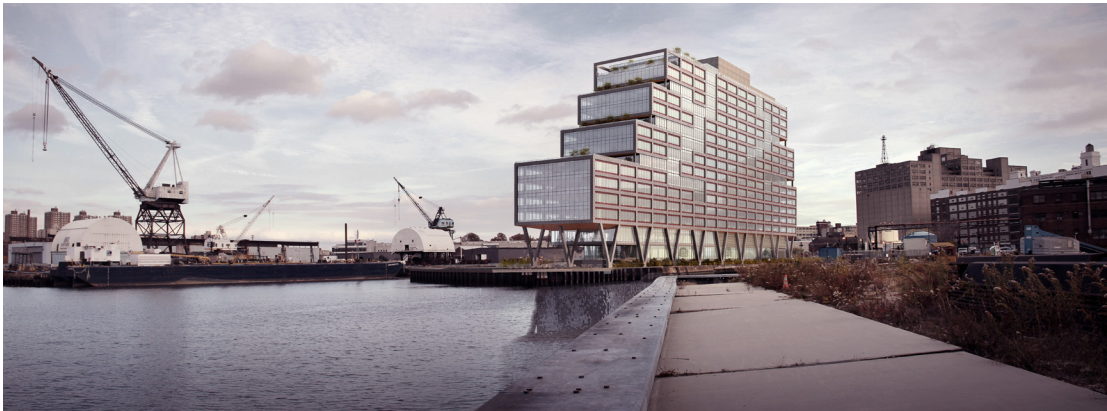
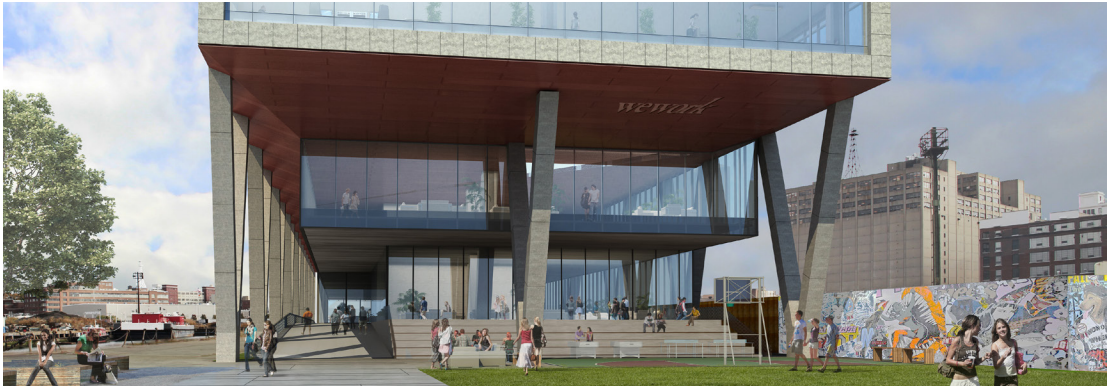
V-shaped columns lift the ship-like structure above the floodplain as the building steps up and away from Wallabout Bay, creating terraces with views of the surrounding Navy Yard, the East River, and Manhattan. Paths trace through the gridded façade, suggesting ant farm-like communal spaces and activities within.

The building's open and flexible work spaces encourage the interaction of people and foster the sharing of ideas, both of which are critical to development of innovative creative communities. Creating 4,000 living-wage jobs, this development is a key effort of the de Blasio administration's plan to double employment at the Navy Yard by 2020.

## Design Team

**S9 Architecture** Navid Maqami, Principal; Candido Gude, Architect; Antonio Rodriguez, Senior Associate; **MPFP** Rick Parisi, Principal; Michael Barnicle, Senior Associate; **Perkins Eastman** Carl Ordermann, Managing Principal; Christopher Ernst, Senior Associate; Arup Matt Jackson, Senior Engineer; Chris Ariyaratana, Structural Engineer; **Cosentini Associates** Michael Maybaum, Executive Vice President; Hiral Patel, Mechanical Engineer; Donald Wehmann, Mechanical Engineer; **Fogarty Finger** Robert Finger, Director; Tin Min Fong, Director; Candace Rimes, Senior Designer; Alexandra Cuber, Associate; **Langan Engineering** Arthur Alzamora, Senior Associate and Vice President; Alberto Resendez, Civil Engineer; Tommy Maene, Geotechnical Engineer; Tim Ward, Civil Engineer; Joseph Good, Project Engineer; **One Lux** Stephen Margulies, Partner; **Brooklyn Navy Yard Development Corporation** David Ehrenberg, President and Chief Executive Officer; Shani Leibowitz, Senior Vice President, Planning; Kristel Railsback Bohan, Senior Project Manager, Development, Design Commission Liaison; **Boston Properties** John Powers, Executive Vice President; Andy Levin, Senior Vice President, Leasing; Rob Schubert, Senior Vice President, Construction; Helene Bryks, Vice President, Counsel; Melissa Cohen, Senior Project Manager, Development; Neal Appleman, Senior Construction Manager; **Rudin Management** Bill Rudin, Vice-Chairman and Chief Executive Officer; Eric Rudin, Vice-Chairman and President; John Gilbert, Executive Vice President and Chief Operating Officer; Michael Rudin, Vice President; Samantha Rudin, Vice President; John Menz, Senior Vice President, Construction; Mark Hopper, Project Manager, Construction; Paul Mandel, Vice President, Construction; Rob Steinman, Vice President, Leasing; Neil Gupta, Vice President; Sidney Migdon, Partner; Andrew Migdon, Partner; Britta Thornquist, Partner; **WeWork** Adam Neumann, Co-Founder and Chief Executive Officer; Miguel McKelvey, Co-Founder and Chief Creative Officer; Aaron Roni Bahar, Executive Vice President, Development; Devin Vermeulen, Creative Director





# The High Line Park Passage and Spur

West 30th Street between 10th Avenue and 11th Avenue, Manhattan

A project of the Department of Parks & Recreation, the Economic Development Corporation, and Friends of the High Line

## **James Corner Field Operations Diller Scofidio + Renfro Piet Oudolf Gardens & Landscape**

As the last segments of the High Line to open to the public, the Passage and Spur will become the northern gateway to this internationally loved elevated promenade. The Passage weaves through Hudson Yards' south tower, which cantilevers 60 feet above the High Line. To celebrate this cathedral-like space, the design is open and minimal, with seating along the north edge and planting, social spaces, and balconies at the southern edge.

The transition from the Passage to the Spur features a densely vegetated threshold of sloped planting beds. Here, a distinctive mix of large woodland trees establishes a dramatic 40-foot-tall canopy of lush greenery with an understory of ferns, broad-leaf groundcovers, and perennials.

Perched above 10th Avenue and 30th Street, the Spur is envisioned as a piazza with amphitheater-like seating steps and an open space for temporary art installations. The Spur offers expansive views, dense woodland plantings, ample public seating, as well as public bathrooms for High Line visitors. This project marks the culmination of nearly 20 years of work toward the transformation of this former derelict rail line into a public treasure.

## **Design Team**

**James Corner Field Operations** James Corner, Founding Principal; Lisa Switkin, Principal; Isabel Castilla, Senior Associate; Stephanie Ulrich, Associate; Cricket Day, Designer; Chi-Yin Lee, Designer; **Diller Scofidio + Renfro** Ricardo Scofidio, Founding Partner; Elizabeth Diller, Founding Partner; Matthew Johnson, Associate Principal; Benjamin Smoot, Associate; Trevor Lamphier, Designer; **Piet Oudolf Gardens & Landscape** Piet Oudolf, Principal; **BuroHappold Engineering** Craig Schwitter, Managing Principal; Alan Erickson, Associate; Carl Keogh, Life Safety Engineer; Michael Huang, MEP Engineer; Andre Parnter, Senior Technical Designer; Erica Yaroni, Structural Engineer; Youngjin Yi, MEP Engineer; **L'Observatoire International** Hervé Descottes, Principal; Jason Neches, Office Director; Natalia Priwin, Lighting Designer; Diana Zwetich, Project Designer; **Pentagram** Paula Scher, Partner; Courtney Gooch, Associate Partner; Philip Habib & Associates Philip Habib, Principal; Sue McCoy, Principal; Colleen Sheridan, Civil Engineer; **Department of Parks & Recreation** Mitchell J. Silver FAICP, Commissioner; Thérèse Braddick, Deputy Commissioner for Capital Projects; William T. Castro, Manhattan Borough Commissioner; Nancy Prince RLA, Deputy Chief of Design; Leslie Wolf, Program Manager; Amie Uhrynowski, Administrative Project Manager, former Design Commission Liaison; **Economic Development Corporation** James Patchett, President; Maria Torres-Springer, former President; Leonard Greco, Senior Vice President; Sabrina Porter, former Assistant Vice President; Michael Rem, former Assistant Vice President; Gale Rothstein, Vice President and Design Commission Liaison; **Friends of the High Line** Robert Hammond, Co-Founder & Executive Director; Adam Ganser, Vice President for Planning and Design; Patrick Hazari, Director of Design and Construction





# Snug Harbor Cultural Center Music Hall Addition

1000 Richmond Terrace, Staten Island

A project of the Department of Design and Construction, the Department of Parks & Recreation, the Department of Cultural Affairs, and Snug Harbor Cultural Center

## Studio Joseph SCAPE Landscape Architecture

This understated yet elegant addition provides critical support spaces for the Snug Harbor Music Hall, which was completed in 1892 and is the second oldest theater in New York City. The new structure is nested carefully between two of the original pilasters on the east façade of the historic building.

Modest in scale, with one floor below grade, the design achieves a sense of presence through formal expression – deep overhangs at the entrances recall the portico of the Music Hall – and materials such as white board-formed textured concrete, glass, and steel. The highly transparent façade brings unexpected natural light to back-of-house spaces that are typically dim, and the fully-glazed southeast corner offers views to an interior artwork by Saul Becker, commissioned through the City’s Percent for Art program.

Outside the public entrance to the building, a landscaped courtyard and lawn provide flexible space for the music hall and Snug Harbor campus. This project reinvigorates the historic theater, enhancing programmatic opportunities and operational efficiency that enable this cultural gem to produce distinctive performances.

## Design Team

**Studio Joseph** Wendy Evans Joseph, Partner in Charge; Robin Taff, Project Architect; Wonwoo Park, Designer; **SCAPE Landscape Architecture** Kate Orff, Principal; Lanie McKinnon, Project Manager; Kate Hayes, Project Designer; **Hage Engineering** Mark Hage, Principal; Andrew Cilley, Associate; **Philip Habib & Associates** Philip Habib, Principal; Gadi Amit, Project Manager; **GTA Engineering Services of New York** Robert Dykstra, Associate; **Plus Group Consulting Engineering** Imtiaz Mulla, Principal; Marina Solovchuk, Principal; **Anita Jorgensen Lighting Design** Anita Jorgensen, Principal; **Van Deusen & Associates** Thomas Nelson, Senior Associate; Shawn Levins, Associate; **Jaffe Holden** Russel Cooper, Principal; Ben Bausher, Senior Consultant; **Department of Design and Construction** Dr. Feniosky Pena-Mora, Commissioner; Christine Flaherty, Associate Commissioner; Oscar Gonzalez, Assistant Commissioner; Michael Nastasi, Assistant Commissioner; Margaret Castillo, Chief Architect; Rick Bell, Executive Director of Design and Construction Excellence; Michaela Metcalfe, Director of Design and Construction Excellence; Jeremy Lockard, Deputy Program Director; Amar Malla, Senior Project Manager; Adele Finer, Team Leader Architecture & Engineering; Kam Leong, Senior Capital Budget Administrator; Zachary Aders, former Design Liaison; Becky Yurek, Design Liaison; **Department of Parks & Recreation** Mitchell J. Silver FAICP, Commissioner; Thérèse Braddick, Deputy Commissioner for Capital Projects; Lynda Ricciardone, Staten Island Borough Commissioner; Kathleen O’ Malley, Director of Architecture; Tom Russo, Staten Island Chief of Operations; Nancy Prince RLA, Deputy Chief of Design; Todd Mitchell, former Staten Island Team Leader; Gail Wittwer-Laird RLA, Staten Island Design Director; Daniel Grulich, Director of Interagency Coordination; John Krawchuk, Director of Historic Preservation; Christopher Noel, Accessibility Coordinator; Rachel Berkson, City Planner, Interagency Coordination; Amie Uhrynowski, Administrative Project Manager; Sheena Brown, Design Commission Liaison; **Department of Cultural Affairs** Tom Finkelpearl, Commissioner; Andrew Burmeister, Assistant Commissioner; David Loewy, former Project Manager; Victor Metoyer, Deputy Director; David Bryant, Public Design Commission Liaison; **Snug Harbor Cultural Center** Lynn Kelly, former President and Chief Executive Officer; Larry Anderson, Director of Performing Arts and Public Program; Jeffrey Manzer, Chief Financial Officer





# Spring Street Park

Sixth Avenue between Spring Street and Broome Street, Manhattan

A project of the Department of Transportation, the Department of Parks & Recreation, and the Hudson Square Connection Business Improvement District

## MNLA

The renovation of this underutilized open space establishes a distinct gateway to the thriving hub of Hudson Square. The design derives its patterns and materiality from the area's history as a printing district, while providing a variety of pathways, gathering areas, and seating to allow for diverse contemporary use of the site. Lush plantings provide a robust visual palette and permeable pavers and expanded tree pits enhance the overall health of the existing trees and capture stormwater runoff.

A central focal point at the mid-block crossing will be anchored by the relocated statue of *General José Artigas* (1987) by José Luis Zorrilla de San Martín, which will be conserved as part of the project. This exemplary public-private partnership will create a pedestrian-friendly environment and improve the quality of life for the people who live and work in Hudson Square.

## Design Team

**MNLA** Kim Chan, Landscape Architect; Lisa DuRussel, Landscape Architect; Karla Van Duyn, Landscape Architect; **Langan Engineering** Chris Vitolano, Principal; Timothy Ward, Senior Project Manager; Soudeh Ahmadian, Senior Staff Engineer; **HLB Lighting Design** Barbara Horton, Senior Principal; Maria Dautant, Senior Designer; **Dagher Engineering** Josephine Zurica, Principal; Cindy Y. Wong, Project Engineer; **Control Point Associates** Greg Sawulski, Senior Project Manager; **Building Conservation Associates** Claudia Kavenagh, Director; Dean Koga, Director of Technical Services; **Thompson & Columbus**; Anthony W. Robins, Co-owner and Director of Historic Preservation Services; **Department of Transportation** Polly Trottenberg, Commissioner; Lori Ardito, First Deputy Commissioner; Margaret Forgione, Manhattan Borough Commissioner; Nina Haiman, Former Deputy Manhattan Borough Commissioner; Michelle Craven, Executive Director, Cityscape & Franchises; Wendy Feuer, Assistant Commissioner Urban Design, Art and Wayfinding; Neil Gagliardi, Director of Urban Design; Nick Pettinati, Public Design Commission Liaison; **Department of Parks & Recreation** Mitchell J. Silver FAICP, Commissioner; Thérèse Braddick, Deputy Commissioner for Capital Projects; William Castro, Manhattan Borough Commissioner; Nancy Prince RLA, Deputy Chief of Design; Desmond Spillane, Manhattan Team Leader; Leslie Peoples RLA, Manhattan Design Director; Jonathan Kuhn, Director of Art & Antiquities; Ricardo Hinkle RLA, Senior Landscape Architect; Tom Adams, Senior Project Manager; Sheena Brown, former Deputy Director, Art & Antiquities; Amie Uhrynowski, Administrative Project Manager, former Design Commission Liaison; **Hudson Square Connection Business Improvement District** Ellen Baer, President and Chief Executive Officer; Renee Schoonbeek, former Vice President of Planning & Capital Projects





# Anti-Idling Ambulance Pedestals

Citywide

A project of the Fire Department of the City of New York

## **Ignacio Ciocchini** **MOVE Systems**

Aligning with the sustainability goals of OneNYC, these anti-idling pedestals will reduce ambulance vehicle emissions without disrupting the Fire Department's critical emergency operations. By connecting to these curbside pedestals, EMTs can safely shut-off their engines while keeping communication systems live and temperature-sensitive medicines refrigerated.

The anti-idling pedestal's steel trapezoidal form efficiently accommodates the interior electrical components to minimize the structure's footprint. At the top of the pedestal, a back-lit perforated pattern acts as a beacon and indicates the functioning status of the pedestal. A circular LED-lit polycarbonate access door is remotely activated by the user and opens to reveal the plug-in cable, which retracts automatically after use, allowing for a quick ambulance departure. This smart industrial design improves neighborhood air quality and ensures that ambulances are ready to respond to emergencies at a moment's notice.

## **Design Team**

**Ignacio Ciocchini**, Industrial Designer; **MOVE Systems** James Meeks, Chief Executive Officer; Michael Dubrovsky, Director of Engineering; Cody Rickman, Chief Electrical Engineer; Ari Kahn, Director of Special Projects; Jeffrey Hoffman, Vice President of Operational Systems; Anudeep Seemalamudi Malleesh, Engineer; Liza Kholodkova, Engineer; **Fire Department of the City of New York** Daniel A. Nigro, Commissioner; Joseph Mastropietro, Assistant Commissioner; Irma Fontaine AIA CBCP, Chief Architect; Jose Machado, Assistant Architect; Stephanie Williams, Facilities Administrative Coordinator; Jeremy Brooks, Deputy Director, Facilities; Jan Borodo, Director, Plant Operations





# LinkNYC

Citywide

A project of the Department of Information Technology & Telecommunications

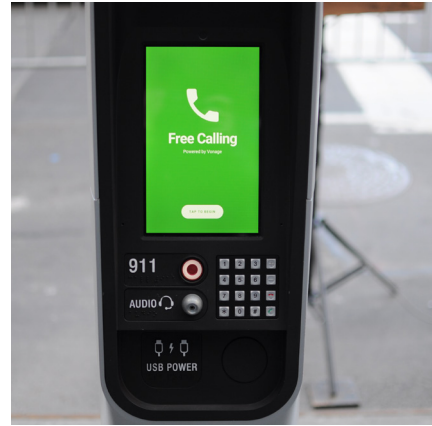
## CityBridge

LinkNYC is a new telecommunications network replacing old payphones with “Links” that benefit the public – especially those of limited means – by offering free services such as high-speed Wi-Fi, mobile device charging, and a custom-built tablet for internet-access and telephone calls within the United States.

With a slim profile and durable material, the “Links” fit seamlessly into the city’s diverse neighborhoods and streetscapes. The silver and black streamlined design is intended to complement the prototypical newsstands, bus shelters, and wayfinding signs throughout the city, yet retain a distinct and easily-recognizable form. In an effort to decrease susceptibility to flooding damage, the main electrical components are situated high-up within the kiosk. The resulting design is user-friendly, ADA-compliant, and strong enough to stand up to life in New York City.

## Design Team

**CityBridge: Antenna Design** Masamichi Udagawa, Partner; Sigi Moeslinger, Partner; **Intersection** Scott Goldsmith, President, Intersection Media; Colin O'Donnell, Chief Technology Officer; **Qualcomm** Kiva Allgood, Vice President of Intelligent Solutions; **CIVIQ Smartscales** Josh Berglund, Engineering Program Manager; **Department of Information Technology and Telecommunications** Anne M. Roest, Commissioner; Charles Fraser, General Counsel; Stanley Shor, Assistant Commissioner, Franchise Administration; Fred Badalamenti, Associate Commissioner, Quality Assurance; Brett Sikoff, Director, Mobile Telecom Franchises and Special Projects; Patrick Bryant, Contracts Counsel



# SPECIAL RECOGNITION AWARD

## Community Parks Initiative

Citywide

A project of the Department of Parks & Recreation

Through the Community Parks Initiative (CPI), the Department of Parks & Recreation is strengthening New York City's network of parks and public space in historically under-served, high-poverty, densely populated, and growing neighborhoods. Part of OneNYC, this multi-faceted capital program reimagines the smaller public parks that people use every day.

The first two phases of CPI will fully renovate 67 parks throughout all five boroughs. Developed with intensive community input from more than 1,900 members of the public, the designs will ultimately transform 69 acres of urban parkland and reach a total population of 3.25 million residents, approximately 29% of whom live below the poverty line.

Many bleak, paved yards surrounded by high chain-link fences will be transformed into vibrant green parks with playgrounds for children, animated water play, multi-use courts and fields, sitting areas, and multi-generational community gathering places. The initiative also includes five new and 23 reconstructed comfort stations and incorporates green infrastructure to manage on-site and street stormwater runoff.

## Design Team

**Department of Parks & Recreation In-House Design** Katherine Bridges RLA; Tom Brown RLA; Craig Church RLA; Laura Drawbaugh RLA; Jon Ernsberger RLA; Heather Faivre; Marina Federova RLA; William Harris RLA; Denise Mattes RLA; Judi Raymund RLA; Tim Rowe RLA; Alisa Stanislaw; Chris Syrett RLA; Judy Tung RLA; Christina Twomey; Shastine Van Vugt; Steve Whitesell RLA; Raymond Zebrowski RLA; **dlandstudio architecture & landscape architecture; Hargreaves Associates; MNLA; MKW Landscape Architecture; Nancy Owens Studio; Prospect Park Alliance; Quennell Rothschild & Partners; Sage and Coombe Architects; Department of Parks & Recreation** Mitchell J. Silver FAICP, Commissioner; Liam Kavanagh, First Deputy Commissioner; Thérèse Braddick, Deputy Commissioner for Capital Projects; Alyssa Cobb-Konon, Assistant Commissioner for Planning and Parklands; William T. Castro, Manhattan Borough Commissioner; Kevin Jeffrey, former Brooklyn Borough Commissioner; Dorothy Lewandowski, Queens Borough Commissioner; Lynda Ricciardone, Staten Island Borough Commissioner; Iris Rodríguez-Rosa, Bronx Borough Commissioner; Kevin Quinn AIA, Chief of Architecture and Engineering; Jonna Carmona-Graf, Chief of Capital Program Management; Nicholas Molinari, Chief of Planning and Neighborhood Development; Nancy Prince RLA, Deputy Chief of Design; Angelyn Chandler, former Team Leader; Joelle Byrer, former Queens Team Leader; David Martin, Brooklyn Team Leader; Todd Mitchell, former Staten Island Team Leader; Andrew Penzi, Bronx Team Leader; Desmond Spillane, Manhattan Team Leader; Kathleen O'Malley, Director of Architecture; Eric Mattes RLA, Brooklyn Design Director; James Mituzas RLA, Queens Design Director; Leslie Peoples RLA, Manhattan Design Director; Renata Sokolowski RLA, Bronx Design Director; Gail Wittwer-Laird RLA, Staten Island Design Director; Jennifer Sun, former Director of Program Development; Seth Jones, Deputy Director, Partnerships for Parks; Gustavo Frindt RLA, Senior Designer; Tristan Porto, Senior Project Manager for Design; Amie Uhyrnowski, Administrative Project Manager and former Design Commission Liaison; Jennifer Gardner, Senior Planner; Nancy Haseley RLA; Jeff Keiter, Project Manager; Suzan Marciona RLA; Jeffrey Martin RLA; Paul Rodriguez, Project Manager; Nahn Tseng, Project Manager; Tara Valenta, Project Manager; Victoria Lee, Project Development Coordinator, Partnerships for Parks; Mary Prince, Senior Outreach Director, Partnerships for Parks; Anthony Martinez, Outreach Director, Partnerships for Parks; Sheena Brown, Design Commission Liaison; Naomi George, Administrator; Andrew Marcus, Urban Fellow; Julia Wagner, Urban Fellow





# SPECIAL RECOGNITION AWARD

## Parks Without Borders

Citywide

A project of the Department of Parks & Recreation

Rooted in the idea that the design of the public realm – streets, sidewalks, and open spaces – should be cohesive and integrated, Parks Without Borders aims to improve the interface between New York City parks and their surrounding neighborhoods. As part of OneNYC, this initiative aims to make parks more welcoming, accessible, and active. Each design concept will begin at the park edge, with lowered fences and gates, wider and more porous entrances, and improved sightlines into the park.

Informed by a wealth of public input, including more than 6,100 nominations for nearly 700 parks, and taking into account physical conditions, context, and overall accessibility, the Parks Department selected eight sites to showcase the Parks Without Borders principles. These design principles will also be incorporated into a wide range of capital projects, ensuring that this program will change the face of hundreds of public parks.

### Design Team

**Department of Parks & Recreation** Mitchell J. Silver FAICP, Commissioner; Thérèse Braddick, Deputy Commissioner for Capital Projects; Alyssa Cobb-Konon, Assistant Commissioner for Planning and Parklands; Jonna Carmona-Graf, Chief of Capital Program Management; Diane Jackier, Chief of Capital Strategic Initiatives; Nancy Prince RLA, Deputy Chief of Design; Steven Lenard, Deputy Director of Planning; Tristan Porto, Senior Project Manager for Design; Eric Mattes RLA, Brooklyn Design Director; James Mituzas RLA, Queens Design Director; Leslie Peoples RLA, Manhattan Design Director; Renata Sokolowski RLA, Bronx Design Director; Gail Wittwer-Laird RLA, Staten Island Design Director; Marisa Berry, Project Development Coordinator; Sheena Brown, Design Commission Liaison; Michael Kralovich, Capital Projects Analyst; Marios Athanasiou, Conservation Corps Fellow



