



## East Side Coastal Resiliency

The East Side Coastal Resiliency (ESCR) project is a coastal protection initiative, jointly funded by the City of New York and the federal government, aimed at reducing flood risk due to coastal storms and sea level rise. The ESCR project will protect 110,000 New Yorkers from the impacts of climate change by reducing flood risk to communities, properties, businesses, critical infrastructure, and public open spaces. In addition to providing flood protection, the project will strengthen and enhance waterfront spaces on Manhattan's East Side by improving accessibility, increasing ecological diversity, and delivering improved recreational amenities to a vibrant and highly diverse community. The ESCR project is among the largest and most technically complex infrastructure projects in New York City's history.

ESCR will create a 2.4 mile flood protection system that will consist of floodwalls and floodgates that are designed to blend into the fabric of the community by integrating with local streets, the elevated East River Park, and the new landscape surrounding Corlears Hook Park, Murphy Brothers Playground, Stuyvesant Cove Park, and Asser Levy Playground. The project will also involve significant investments in underground interior drainage improvements that will improve the capacity of the sewer system.

### Project Area 1

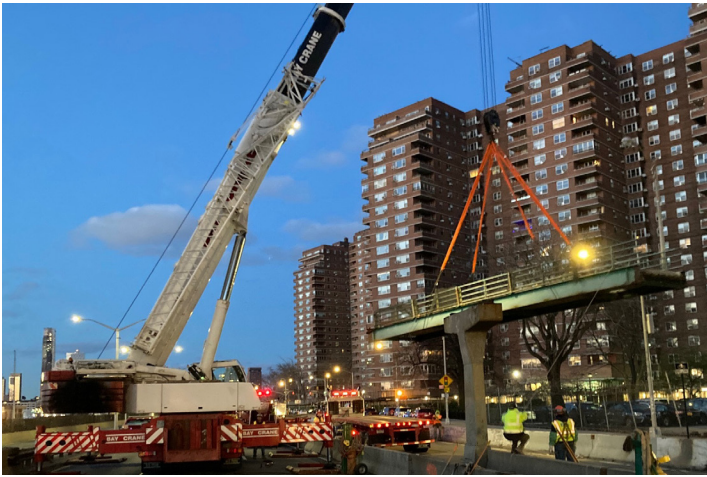
East River Park and adjacent areas

#### Construction begins in East River Park!

Work in Project Area 1 (PA1) is concentrated between Montgomery Street and East 15th Street, largely focused on East River Park.

The majority of the park will be raised approximately eight feet, to provide flood protection to the community and protect the [reconstructed park amenities](#) which include new ball fields, BBQ areas, playgrounds, tennis and track area, maintenance buildings, comfort stations, and more. Floodwalls and floodgates will connect to Project Area 2 (PA2) in the north and meet the existing grade at the FDR Drive to the south, ultimately connecting to future flood protection through the Brooklyn Bridge-Montgomery Coastal Resiliency (BMCR) project.

The contractor is moving forward with the [Construction Approach](#) presented to the community in October of 2021. As a reminder, East River Park will be closed in phases over the next several years, keeping a minimum of 42% open space for public access at all the times. The construction approach aims to provide full flood protection for the community as quickly as possible and maintain public and worker safety during construction.



Delancey Street Pedestrian Bridge dismantling work



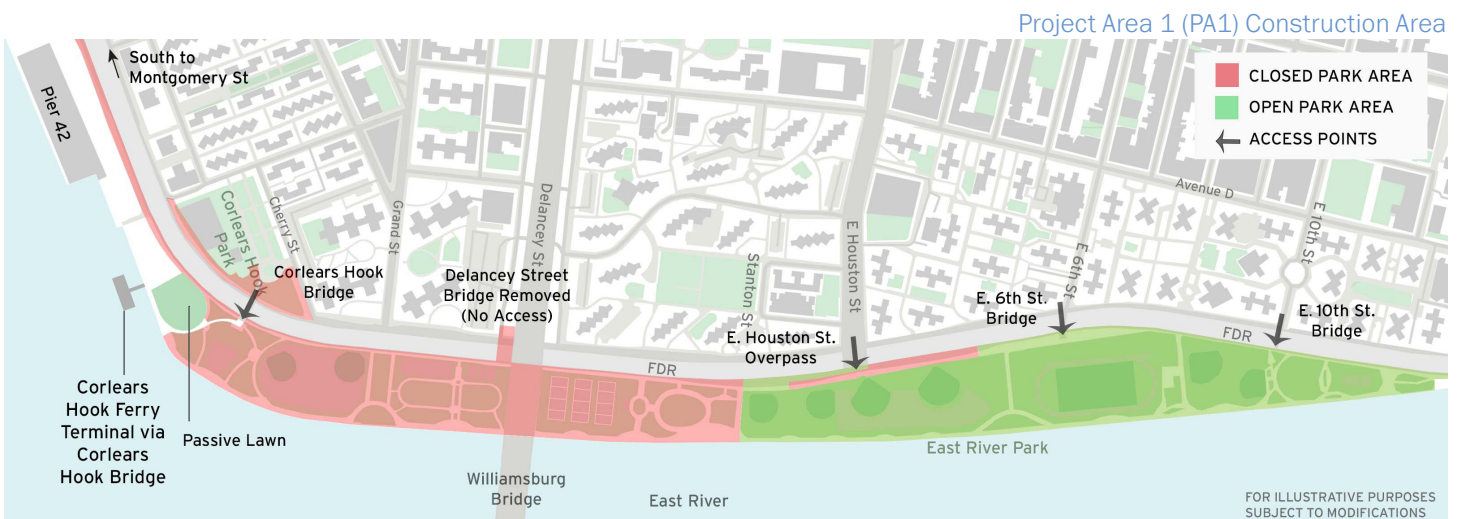
Delancey Street Pedestrian Bridge rendering (looking southeast)

### Current and Upcoming Work

- Full closure of East River Park and Greenway at Stanton Street south to Montgomery Street.
- The Greenway between East Houston Street and East 4th Street will be closed into the summer, due to ongoing Con Edison utility work which will continue north in sections through next year.
- The Delancey Street Pedestrian Bridge has been dismantled to make way for the new universally accessible Pedestrian Bridge. In February and March, crews worked to remove the pedestrian ramps and the center span of the existing Delancey Street Pedestrian Bridge. This work required a full overnight closure on March 27, 2022.
- Partial closure of Corlears Hook Park was completed in the first week of April. Activities to prepare for the dismantling of Corlears Hook Bridge have begun and a temporary bridge will be installed in several weeks to provide access to the Corlears Hook Ferry and passive lawn.
- Con Edison utility upgrades will continue throughout the project area for the duration of the project. In this quarter, work can be expected around the Montgomery Street / South Street intersection as well as near East 10th Street and Avenue D.

### Access and Open Areas

- To access open park areas, use entrances at East Houston Street, East 6th Street, and East 10th Street.
- Corlears Hook Ferry Terminal is open. To access, use the Corlears Hook Bridge until the temporary pedestrian bridge in Corlears Hook Park is installed.
- The passive lawn area has opened with an entrance near the Corlears Hook Ferry Terminal.
- The following amenities in the park areas north of Stanton Street are still open to the public: six ball fields (3,4,5,6,7,8), track and field, field house, East 10th Street playground, East 10th Street comfort station, BBQ area, and esplanade from Stanton Street north.
- The project team is working with the NYC Department of Transportation (DOT) to create bike detours that will direct cyclists to the protected bike lanes along 1st and 2nd Avenues.



# Project Area 2

Asser Levy Playground/Stuyvesant Cove Park/Murphy Brothers Playground

## First Floodgate installed in Project Area 2 (PA2)!

To date, over 900 feet of floodwall have been installed in PA 2. On February 24, 2022, the contractor installed the first vehicular swing floodgate for ESCR in Stuyvesant Cove Park, a critical step in providing flood protection to Manhattans East Side. Two more gates are scheduled to be installed this year: a vehicular roller gate at Asser Levy Playground and a vehicular swing gate at the West Service Road.

Work in PA2 is concentrated between East 15th Street and East 25th Street with a focus on Asser Levy Playground, Stuyvesant Cove Park and Murphy Brothers Playground. Asser Levy Playground, the first of PA2's three major sections, is scheduled to reopen to the community this Spring. Site restoration of Stuyvesant Cove Park north of East 20th Street will progress throughout the summer and into the fall when this northern portion is expected to open.

The contractor is working to complete floodwall operations and bulkhead rehabilitation. Later this year, the contractor will begin site preparations for the upcoming construction activities in Murphy Brothers Playground and the southern portion of Stuyvesant Cove Park.



Asser Levy Playground Basketball Court Area

- Emergency vehicle and pedestrian access to sidewalks will be maintained at all times.
- Water Service Interruptions: During the project there may be some service interruptions. To allow for water line replacement, existing water service must be temporarily shut off. Advance notice will be provided before any service interruption. Water service will be restored at the end of each night.



Stuyvesant Cove Park Vehicular Swing Gate install 2/24/2022

# Community Construction Information

## Community Impacts

- Vehicular travel lane closures, detours and new traffic patterns will be required.
- Cyclists and pedestrian detours will be required.
- Signage will be posted in advance within the affected areas. Traffic Enforcement Agents and flaggers will be present when necessary to assist vehicles and pedestrians.
- Public transportation will be maintained at all times.

## Environmental Monitoring

- Air, noise, and vibration monitors are active 24 hours/day, 7 days/week.
- Air monitoring summaries are available on the [ESCR Environmental Monitoring web-page](#), with verbal updates provided at [Community Advisory Group Meetings](#).
- The project follows all federal, state and local guidelines. To date construction activities have not exceeded National Ambient Air Quality Standards.
- The ESCR [Environmental Fact Sheet](#) can also be found on the ESCR website.

**East Side Coastal Resiliency**  
www.escr.ny.gov

## Air Quality Monitoring

Community health and safety is extremely important to the City of New York. The East Side Coastal Resiliency (ESCR) project team is ensuring there is very limited impact on nearby air quality as we construct flood protection for New Yorkers on Manhattan's East Side.

**1. We are constantly monitoring the air quality around our construction activities.**

**WHAT ARE WE MEASURING?**

Particulate Matter (PM), or particle pollution, is a term for the solid particles and liquid droplets found in the air.

**MEASURED SIZES:**

- PM 2.5: smaller particles typically from vehicle emission
- PM 10: larger particles typically from dust

Monitoring machines are placed strategically along the edge of active construction activities.

**AIR MONITOR A (UPWIND)**

Existing air flows

**Monitor A**

measures existing particles

**AIR FLOWS**

through site

**Monitor B**

measures existing particles and any potential increase in particle pollution directly related to construction activities

**MONITOR B (DOWNWIND)**

reflects the potential increase in particle pollution

**NET PARTICULATE MATTER** is the standard metric for monitoring and assessment of construction impacts on air quality, as well as compliance with federal limits.

**2. We are taking steps to control dust and limit emissions during construction.**

**Steps to reduce construction vehicle pollution and emissions:**

- Use barging for large deliveries
- Restrict truck idling time
- Use Ultra-Low Sulfur Diesel fuel
- Minimize use of diesel engines
- Use the best available technology for non-road diesel engines

**Steps to reduce and control dust:**

- Cover and secure loads for all trucks hauling loose material including sand and dirt
- Use water spraying for roads, trucks, truck wheels, excavation areas, and stockpiles
- Cover stockpiles with anchored tarps
- Use extra care, including more frequent application of these measures, during dry and high wind periods

These steps are implemented during daily construction activities and are increased if monitoring machines indicate additional action is needed. Visit the ESCR website to view weekly Construction Notices and Announcements.

**East Side Coastal Resiliency**  
www.nyc.gov/escr

**air quality standards.**

For alerts, our team knows when we need to take additional measures during construction

- The ESCR Team and Environmental Specialists receive real-time alerts when Particulate Matter (PM) numbers approach an Action Level, which is well below the permissible exposure level.
- If it is determined that the construction is not meeting the standards set by oversight agencies, work will be halted and further assessed to assure protection to residents and park users.

**Real-time TWA** is standard for evaluating the particulate pollution that exposure to particulate matter over a 24-hour period.

**at 15-min TWA intervals**, meaning we average exposures over 15-minute intervals to help the ESCR team to monitor the project's

**Light is multi-tiered with checks & balances.**

- **NYSDEC** (Department of Environmental Conservation) requires a permit for construction activities involving earthmoving, grading, or excavation.
- **JOINT VENTURE** (ESCR Management (PM) & Inspection Services Team)
- **PROJECT AREA 2 CONTRACTOR** (ESCR Resiliency Partner)
- **ENVIRONMENTAL SPECIALIST** (Environmental Services Team)
- **PM ENVIRONMENTAL CONSULTANT** (SA Engineering)

Agencies provide regulatory guidance and approve the Contractor's environmental plans at the start of the contract.

They make regular inspections to ensure compliance throughout construction.

The PMCM team can stop the Contractor's work or withhold payment if they determine that the contractors are not taking appropriate measures to limit particulate pollution.

The Contractors are responsible for the safety of their workers and the community surrounding the project site.

The PMCM's environmental specialist is responsible for monitoring work in designated Areas of Concern from Historic Manufactured Gas Plants (HMG).

The Contractor's environmental consultants are responsible for monitoring, particulate pollution and alerting the project team (City, PMCM and Contractor) if particulate matter reaches the Action Level.

**the community.**

The ESCR Team provides Air Quality Monitoring updates at Community Advisory Group (CAG) meetings and through the ESCR Quarterly Air Quality Monitoring Reports both found on the ESCR website.

While the ESCR Team has been tasked to monitor Air Quality around our construction activities, be advised there are many other factors impacting air quality in the City. Residents should follow all **NYC Air Advisories**: <https://aqs.ny.gov/escr/>.

ESCR Air Quality Monitoring Fastsheet

# ESCR in the Community

## Work With Us

On February 16, 2022, the ESCR Project team hosted a Winter Virtual Information Session & Resource Fair focused on hirings & subcontracting. The team is grateful to special guest Council Member Carlina Rivera for her office's continued support on the ESCR project. We would also like to thank our event partners and presenters, including:

- [NYC Department of Design and Construction Office of Diversity and Industry Relations](#) (NYCDDC ODIR)
- ESCR General Contractors (GCs): Perfetto Contracting Corporation Inc & IPC Resiliency Partners
- Program and Construction Management Team (PMCM): HNTB-LiRo
- [NYC Department of Small Business Services](#) (SBS): [Workforce1](#)
- [Lower East Side Employment Network](#) (LESEN)

The presentation and live recording can be viewed on the [Work With Us](#) page of the ESCR website. A Section 3/MWBE update was provided at the 03/24/2022 [Community Advisory Group](#) (CAG) meeting. Quarterly updates will continue.

## Emergency Preparedness

The East Side Coastal Resiliency (ESCR) project has coordinated with New York City Emergency Management Department to develop a [web page](#) of helpful links and resources for Emergency Preparedness. A number of those resources have been provided here:

- [Preparedness Guides and Apps page](#)
- [Preparedness Tips](#)
- [Know Your Zone](#)
- [NYC Community Emergency Response Team \(CERT\) Program](#)
- [Ready New York](#)
- [Community Preparedness](#)

### Questions? Preguntas? 问题?

Please contact **Community Construction Liaisons (CCL)** for any project related inquiries/concerns you may have:

#### **Project Area 1 CCLs:**

**Sonia Quinones** (para mas información llame):  
347-628-8724

**Joyce Xin** (欢迎中文咨询): 929-844-0407

**Email:** [ESCRCL1@ddccr.com](mailto:ESCRCL1@ddccr.com)

#### **Project Area 2 CCL:**

**Nadine Harris** is the Community Construction Liaison (CCL) for **Project Area 2**.

Phone: 347-572-3057

Email: [ESCRCL2@ddccr.com](mailto:ESCRCL2@ddccr.com)



ESCR Earth Day 4/22/2021

## Spring/Summer Tabling

Email [ESCRCL1@ddccr.com](mailto:ESCRCL1@ddccr.com) if you are interested in having the ESCR Community Outreach Team table in your neighborhood or building. We can provide informational material and respond to community inquiries.

## Interim Recreation

For more information on open space while the ESCR project is under construction, please visit the [NYC Parks Neighborhood Recreation Resources website](#). You can also view an [overview of completed and upcoming open space improvements](#) (as of Summer 2021).

## Project Communications

The project team provides regular construction updates at various community events and meetings, including local community boards and the [ESCR Community Advisory Group](#) (CAG). You can view past community [presentation](#) and check [upcoming meetings](#) on the ESCR website.

### For More Information:

Visit the ESCR website, [www.nyc.gov/escr](http://www.nyc.gov/escr), to sign up to receive weekly Construction Bulletins, Community Advisories, and other project communications, as well as to learn more about community meetings and events, ESCR background, design, and construction, and opportunities to work with us.

Or Submit an Inquiry:

[www.nyc.gov/escr/contact](http://www.nyc.gov/escr/contact).

