



## East Side Coastal Resiliency

The East Side Coastal Resiliency (ESCR) project is a coastal protection initiative, jointly funded by the City of New York and the federal government, aimed at reducing flood risk due to coastal storms and sea level rise. The ESCR project will protect 110,000 New Yorkers from the impacts of climate change by reducing flood risk to communities, properties, businesses, critical infrastructure, and public open spaces. In addition to providing flood protection, the project will strengthen and enhance waterfront spaces on Manhattan's East Side by improving accessibility, increasing ecological diversity, and delivering improved recreational amenities to a vibrant and highly diverse community. The ESCR project is among the largest and most technically complex infrastructure projects in New York City's history.

ESCR will create a 2.4 mile flood protection system that will consist of floodwalls and floodgates that are designed to blend into the fabric of the community by integrating with local streets, the elevated East River Park, and the new landscape surrounding Corlears Hook Park, Murphy Brothers Playground, Stuyvesant Cove Park, and Asser Levy Playground. The project will also involve significant investments in underground interior drainage improvements that will improve the capacity of the sewer system.

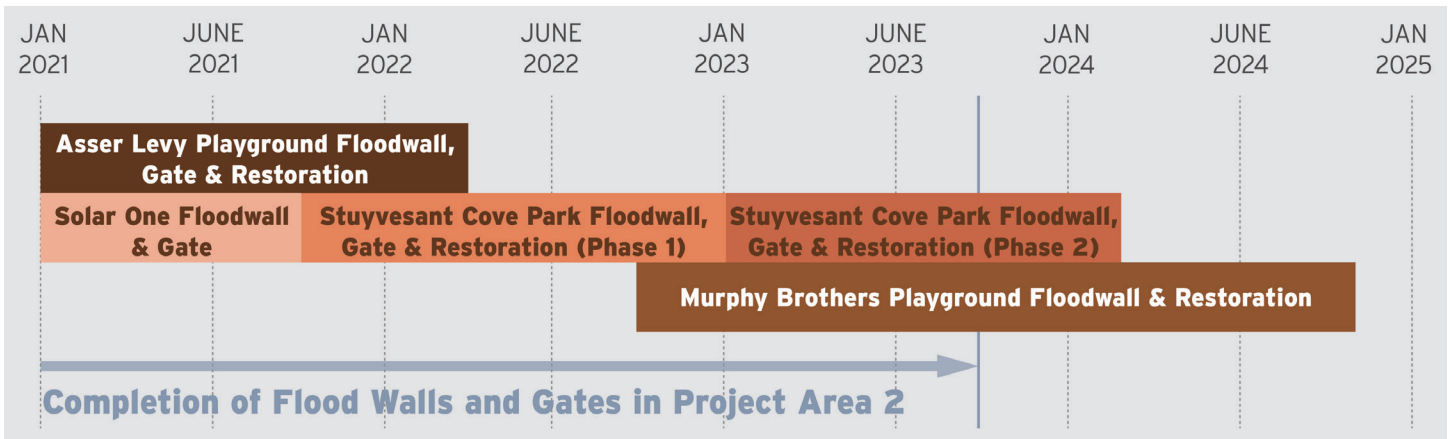
### Project Area 1

Work in Project Area 1 (PA1) is concentrated in the Lower East Side between Montgomery Street and East 15th Street and includes East River Park. Notice to Proceed (NTP) was issued to the PA1 contractor on August 16, 2021. NTP allows the contractor to begin work in the project area. The contractor's phasing plan is under review and no portion of the Park will be closed until further

notice. Once the project phasing is approved by the NYC Department of Design and Construction (NYCDDC) and other city agencies, the ESCR team will provide more information to the community on recreation areas, access, and detours. Visit the ESCR website ([nyc.gov/escr](http://nyc.gov/escr)) or attend local [community board meetings](#) for updates.

### Project Area 2

Construction in ESCR's Project Area 2 (PA2) encompasses work between East 15th and East 25th Streets and includes Asser Levy Playground, Stuyvesant Cove Park, Murphy Brothers Playground, as well as local streets around the East 15th Street Con Edison facility. This work will be broken into three main phases over the next several years, with one and a half of the recreational facilities within PA2 remaining accessible to the public at all times. The first and current construction phase of PA2 is focused on



Construction timeline for PA2, subject to change

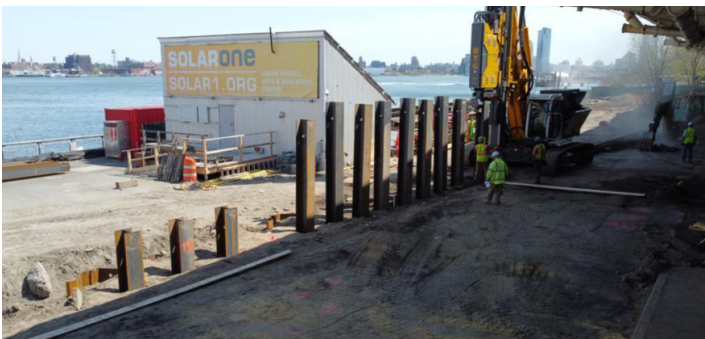
Asser Levy Playground and the areas under the FDR Drive at East 23rd Street, and adjacent to the Solar One building in the north end of Stuyvesant Cove Park.

### Construction Progress

In the last newsletter, we described the general sequence of tasks for the construction in PA2:

- mobilization and site preparation
- utility relocation work
- pile installation
- floodwall foundation
- floodwall construction
- park and roadway reconstruction

In this quarter, the contractor continued coordinating with ConEdison and City Agencies on utility relocations and upgrades, including the replacement of water mains and sewer lines to accommodate the piles and floodwall foundations. Work also progressed on the installation of the piles and construction of floodwall foundation in Stuyvesant Cove Park, Asser Levy Playground, and the intersection of East 23rd Street under the FDR Drive.



H-pile installation in Stuyvesant Cove Park near Solar One

### Pile Installation

Piles are a critical component of the flood protection at the center of this project. They provide both structural support for the floodwalls as well as perform as part of the defense against flooding from storm surge. There are three types of piles being installed in PA2: H-Piles, Sheet Piles, and Micropiles.

### H-Piles

H-Piles, which have an H-shaped profile, act as structural support for the floodwall foundations. They are the longest of the piles used and are driven into the earth by special pile driving equipment. At Stuyvesant Cove Park near Solar One, the H-piles go as deep as 120'.



Sheet pile installation in Stuyvesant Cove Park

### Sheet Piles

Sheet piles are wider in profile and are installed to form an interlocking wall that stops the flow of water underground. In this project, they are installed up to 25' below grade in Stuyvesant Cove Park and 50' below grade in Asser Levy Playground.

### Micropiles/Minipiles

Micropiles, also called minipiles, are similar to the h-piles in that they provide lateral structural support for the floodwall. The micropiles are small diameter steel piles and are installed where there are more difficult ground conditions. They are installed 85'-90' below grade in this part of the project.



Foundation and formwork for the first section of floodwall in Stuyvesant Cove Park.

### Floodwall Foundations & Structural Supports

With portions of the pile installation completed, the contractor began to construct the foundation for the floodwall. The foundation elements include the concrete base and rebar structural supports. Also known as reinforcement steel, rebar is a steel bar used to strengthen and hold the concrete in tension. This work will continue through the next quarter at Stuyvesant Cove Park and will begin at Asser Levy Playground and at various locations along the intersection of East 23<sup>rd</sup> Street under the FDR.

### Floodwall Construction

Over the last few months, the contractor poured several mock-ups of the floodwall to ensure that the details and color are correct. How does the contractor pour a vertical wall? Formwork is key. Formwork is the wood frame built like a container to hold the concrete in place while it sets or cures. Once set, the formwork is released and reused for the next pour. With the initial mock-ups complete, the contractor poured the first 40' section of floodwall in Stuyvesant Cove Park.

### Other Work

In addition to the work in the noted construction areas for this phase, ConEdison is starting utility work at the intersection of E. 20<sup>th</sup> Street and Avenue C. This work is similar to the utility relocation work which occurred earlier in the project. See the current [Advisory](#) on the website for changes to bicycle and vehicular traffic in the project area. All Community Advisories can be viewed at [www.nyc.gov/escr/notices](http://www.nyc.gov/escr/notices).

### Community Impacts

- Air, noise and vibration monitors are active 24 hrs/day, 7 days/week.
- Vehicular travel lane closures and new traffic patterns will be required, as well as detours.
- Cyclists and pedestrian detours will be required.
- Signage will be posted in advance within the affected areas. Traffic Enforcement Agents and flaggers will be present when necessary to assist vehicles and pedestrians.
- Emergency vehicle and pedestrian access to sidewalks will be maintained at all times.
- Public transportation will be maintained at all times.
- Water Service Interruptions: During the project there may be some service interruptions. To allow for water line replacement, the existing water service must be shut off by closing the valves at either end of the section. Advance notice will be given for all planned interruptions. Water service will be restored at the end of each night.

### Community Construction Liaison (CCL)

Nadine Harris is the Community Construction Liaison (CCL) for Project Area 2. Please contact Nadine for any project related inquiries/concerns you may have:

**Phone:** 347-572-3057

**Email:** [ESCRCL2@ddccr.com](mailto:ESCRCL2@ddccr.com)

Or visit [www.nyc.gov/escr/contact](http://www.nyc.gov/escr/contact) to make an inquiry online.

# ESCR in the Community

## Work With Us

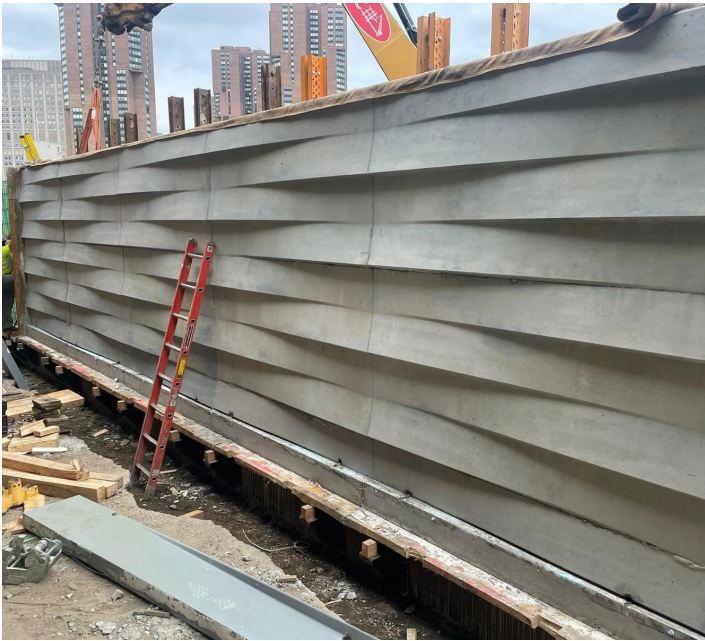
The ESCR project is a public investment that will help drive the City's economy and create jobs in New York City neighborhoods. Our team is committed to working with M/WBE and Section 3 firms and we host quarterly information sessions on subcontracting resources and hiring opportunities for both firms and individuals. The next virtual information session will be held in October 2021. For more information and resources on workforce development, including a factsheet on ESCR subcontracting and hiring goals and recordings of previous information sessions, please visit the **Work With Us** page on the ESCR website: [nyc.gov/escr](https://www.nyc.gov/escr) > **Contact** > **Work With Us**

## Call for Art

This summer, the ESCR project is inviting K-12 students and local artists in NYC to submit artwork in response to our Call for Art. Select artists will receive a monetary award and their artwork will be printed on construction fencing around Project Areas 1 and 2. Artwork should respond to the designated themes related to resiliency and will be judged by representatives from local community-based organizations and members of CB3 and CB6. Artwork may be submitted digitally, through our online portal, or in person at the Seward Park and Tompkins Square Libraries. Please visit [www.nyc.gov/escr/art](https://www.nyc.gov/escr/art) for the full requirements for entry, as well as the submission forms and links to the portal. All submissions are due September 30, 2021.

## Project Communications

Our Community Engagement team presents monthly at the CB6 Land Use Committee, CB3 Parks Committee, and the ESCR Community Advisory Group (CAG) meetings, where you can get updates project construction, hiring goals, and other engagement initiatives. You can view past community presentations on the ESCR website: [nyc.gov/escr](https://www.nyc.gov/escr) > **Project Updates** > **Presentations**.



*First section of floodwall in Stuyvesant Cove Park*



*Our Community Engagement team has been in Stuyvesant Cove Park and East River Park monthly to share project information and answer questions about upcoming construction.*

### For More Information:

Visit the **ESCR website**, [www.nyc.gov/escr](https://www.nyc.gov/escr), to sign up to receive weekly Construction Bulletins, Community Advisories, and other project communications, as well as to learn more about community meetings and events, ESCR background, design, and construction, and opportunities to work with us.

Or **Submit an Inquiry**: [www.nyc.gov/escr/contact](https://www.nyc.gov/escr/contact). Someone from our team will respond as soon as possible.

