



## East Side Coastal Resiliency

The East Side Coastal Resiliency (ESCR) project is a coastal protection initiative, jointly funded by the City of New York and the federal government, aimed at reducing flood risk due to coastal storms and sea level rise. The ESCR project will protect 110,000 New Yorkers from the impacts of climate change, by reducing flood risk to communities, properties, businesses, critical infrastructure, and public open spaces. In addition to providing flood protection, the project will strengthen and enhance waterfront spaces on Manhattan's East Side by improving accessibility, increasing ecological diversity, and delivering improved recreational amenities to a vibrant and highly diverse community. The ESCR project is among the largest and most technically complex infrastructure projects in New York City's history.

ESCR is building a 2.4-mile flood protection system consisting of floodwalls and floodgates, which are designed to blend into the fabric of the community by integrating with local streets, the elevated East River Park, and the new landscape surrounding Corlears Hook Park, Murphy Brothers Playground, Stuyvesant Cove Park, and Asser Levy Playground. The project also involves significant investments in underground and interior drainage upgrades that will improve the sewer system's capacity.

### ESCR Highlights

The ESCR team hit a number of milestones this year, with even more to come in 2024. The second half of 2023 saw the full reopening of all ESCR-related portions of Stuyvesant Cove Park, and Murphy Brothers Playground is expected to open in the fall of 2024!

In Project Area 1, additional progress was made on Ballfields 1 and 2, and the Delancey Street and Corlears Hook Pedestrian Bridge abutments began to take shape ahead of their scheduled 2024 installation. We've got a lot more detail on these updates and more in the pages ahead.

The ESCR Community Engagement team is working hard to connect with the ESCR community and is continuing outreach programming, including ESCR to YOUR School,

ESCR Tabling, and tenant meetings. Reach out to the team for information on these events (see pages 6 and 7 for more).



Plantings and floodwall in Stuyvesant Cove Park, 2023



# Project Area 1

East River Park and adjacent areas

## Construction in East River Park continues

Work in Project Area 1 (PA1) is concentrated between Montgomery Street and E. 15th Street, largely focused on East River Park. East River Park will be closed in phases over the next several years, keeping a minimum of 42% open space for public access at all times. The phasing approach aims to provide full flood protection for the community as quickly as possible and maintain public and worker safety during construction.

## PA1 Construction Progress in 2023

**Fill Placement:** Fill operations south of Ballfield 3 began in mid-2023, with deliveries arriving via barge to reduce local truck traffic. As of mid-December 2023, approximately 104,000 of 275,905 cubic yards (CY) of backfill had been delivered. About 290,000 CY of fill material will be delivered as part of Phase 1.



Crane unloading fill materials from barge, September 2023

**Construction of Park Amenities:** We also saw a huge milestone for the project get underway: the restoration of Ballfields 1 and 2 in the southern portion of the park. In the final week of the year, the contractor was nearly finished laying the synthetic turf.



Synthetic turf being placed on Ballfields 1 and 2, December 2023



Test fit of Delancey Street Bridge at fabrication facility, November 2023

**Bridge Work:** Pier construction started for the new Delancey Street Pedestrian Bridge on both the residential and park sides. The bridge structure itself is being fabricated in Italy, and then it will be disassembled, shipped to the ESCR site, and reassembled in the passive lawn area. The bridge is scheduled to be fully installed and open to the public in 2024. The nearby Corlears Hook Pedestrian Bridge will follow a similar plan and is expected to open later next year.

**Esplanade Reconstruction:** One key element of the new East River Park esplanade's design is the use of pre-cast concrete pier caps. These pieces sit on top of the existing pier cap foundations, which have been leveled and surveyed to ensure a perfect fit. Unlike pier caps that would be manufactured on-site, pre-fabricated pieces can be delivered by barge, eliminating the need for roughly 900 large truck deliveries of concrete from local roads and highways!



Installation of pre-cast esplanade pieces, December 2023

**E. 10th Street Utility Work:** E. 10th Street between FDR Drive and Avenue D has been going through major utility improvements, including the replacement of 100-year-old water mains and deep sewer work, which will continue into 2024. Notices have been provided to the community ahead of water shutdowns needed to facilitate this work. Our Community Construction Liaisons are in close coordination with NYCHA management and tenant association teams.

**Transitioning into Phase 2:** An updated phasing approach was presented at the May 2023 Community Advisory Group (CAG) meeting. In response to community feedback from that presentation, the general contractor and PMCM put forth a new approach, prioritizing longer-term use of the esplanade.



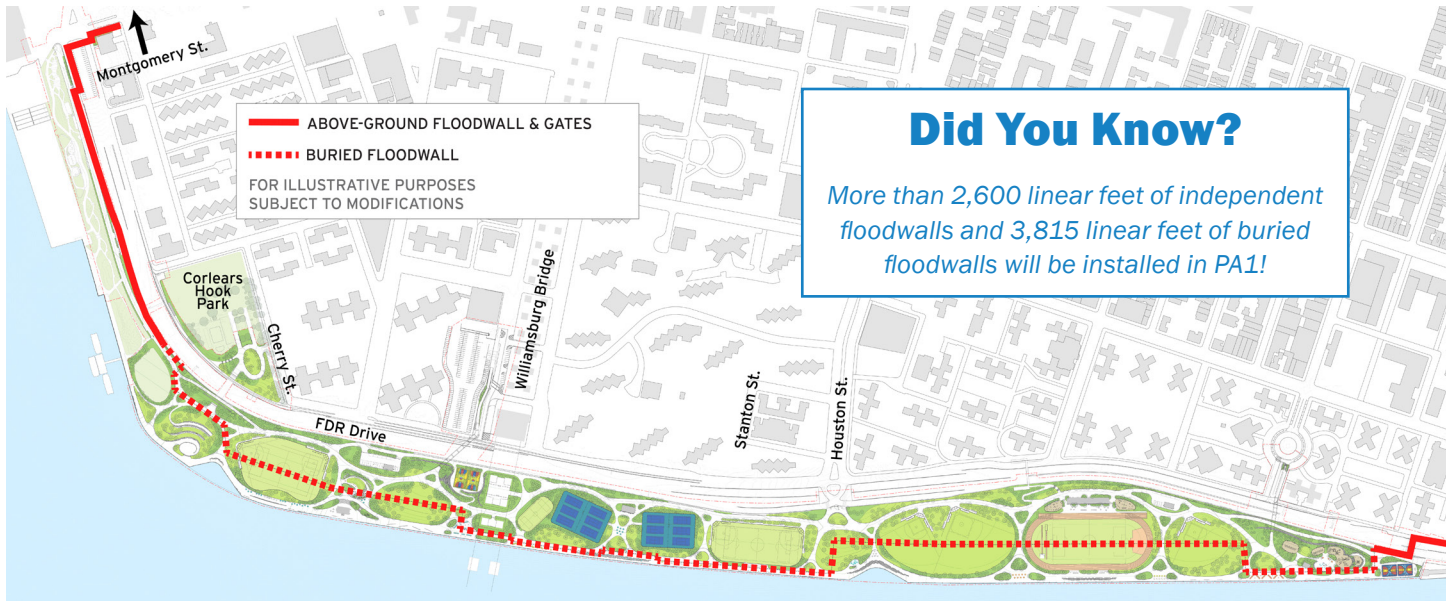
Phase 2 work was initiated under the new approach in October, starting with time-sensitive deep sewer work in Ballfields 3, 4, and 5. The Greenway connecting East River Park and PA2 was reopened in December 2023, re-establishing the connection to Stuyvesant Cove Park and the ferry landing.

**New Floodwalls:**

- This year, the Montgomery Street parking lot floodwall construction began.
- Sheet pile installation along the Greenway, from Montgomery Street to Cherry Street, is ongoing.
- Much of the underground floodwall and bulkhead/cutoff wall south of Ballfield 3, within the main portion of East River Park, has been constructed.



Floodwall to be buried near esplanade and Williamsburg Bridge, August 2023



ESCR floodwalls planned for Project Area 1

**DCLA / DDC - PAIR Art Installation:**

The NYC Department of Cultural Affairs (DCLA) initiated the Public Artist in Residence (PAIR) program in collaboration with DDC this fall. The Artist in Residence, Carlos Irijalba, chose the ESCR project as his muse. The installation, titled, “*Joined an Avalanche Never to be Alone Again,*” was on view near the Corlears Hook NYC Ferry terminal and temporary bridge through mid-November of 2023. The three-part installation (*Pannotia*, *The Fence*, and *The Wave*) examined how humans have accelerated a global environmental crisis and made visible how NYC is building resiliency into its survival, looking decades and centuries into the future. Of the three-part installation, pieces of ‘*Pannotia*’ and ‘*The Fence*’ are still on display. ‘*The Wave*’ was removed in the early winter of 2023. [Read more about Carlos and his work here.](#)



Carlos Irijalba's artwork on display in East River Park, September 2023  
Left: *The Wave*, Center: *The Fence*, Right: *Pannotia*



## Project Area 2

### Asser Levy Playground/Stuyvesant Cove Park/Murphy Brothers Playground

Work in Project Area 2 (PA2) is concentrated between E. 15th Street and E. 25th Street, including three neighborhood parks. Asser Levy Playground reopened to the public in May 2022 with a new floodwall and floodgate, and a reconstructed, resilient playground and basketball court. Stuyvesant Cove Park is being updated to integrate a combination of floodwalls and floodgates, along with upgraded amenities and new plantings that can withstand salt spray. In Murphy Brothers Playground, flood protection is being woven into the park, alongside new ballfields, dog runs, and landscaping.



Stuyvesant Cove Park, May 2023

During 2023, all ESCR-related portions of Stuyvesant Cove Park opened to the public! Stuyvesant Cove Park's northern entrance at E. 23 Street is, however, closed for the Solar One building construction, a project managed by the New York City Economic Development Corporation. Though the E. 23 Street entrance is closed, the Greenway is fully open north of E. 23rd Street, and south heading towards PA1 / East River Park. Murphy Brothers Playground and floodwall construction will continue into 2024, and we are looking forward to welcoming park users back to the playground later that year!

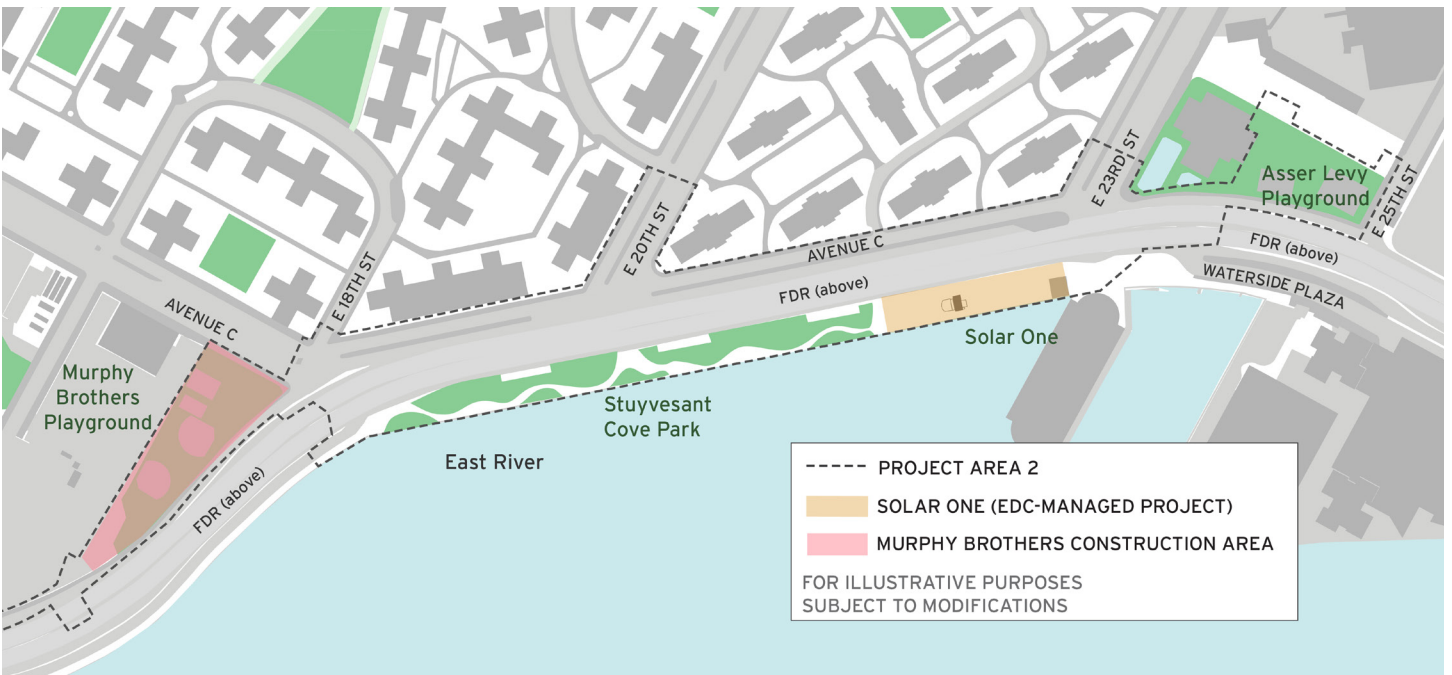


Installation of Floodgate 11, July 2023

As of December 2023, over 2,400 linear feet of floodwall and ten floodgates have been installed in Project Area 2, including Gates 9-17 at Stuyvesant Cove Park and Gate 18 at Asser Levy Playground. Gates 7 and 8, closer to the Con Edison facility, are scheduled to be installed in Spring 2024. The gates are designed to remain open to allow continuous waterfront access but will be closed before future storm or flood events. In all, 18 floodgates will be installed across the ESCR project areas.

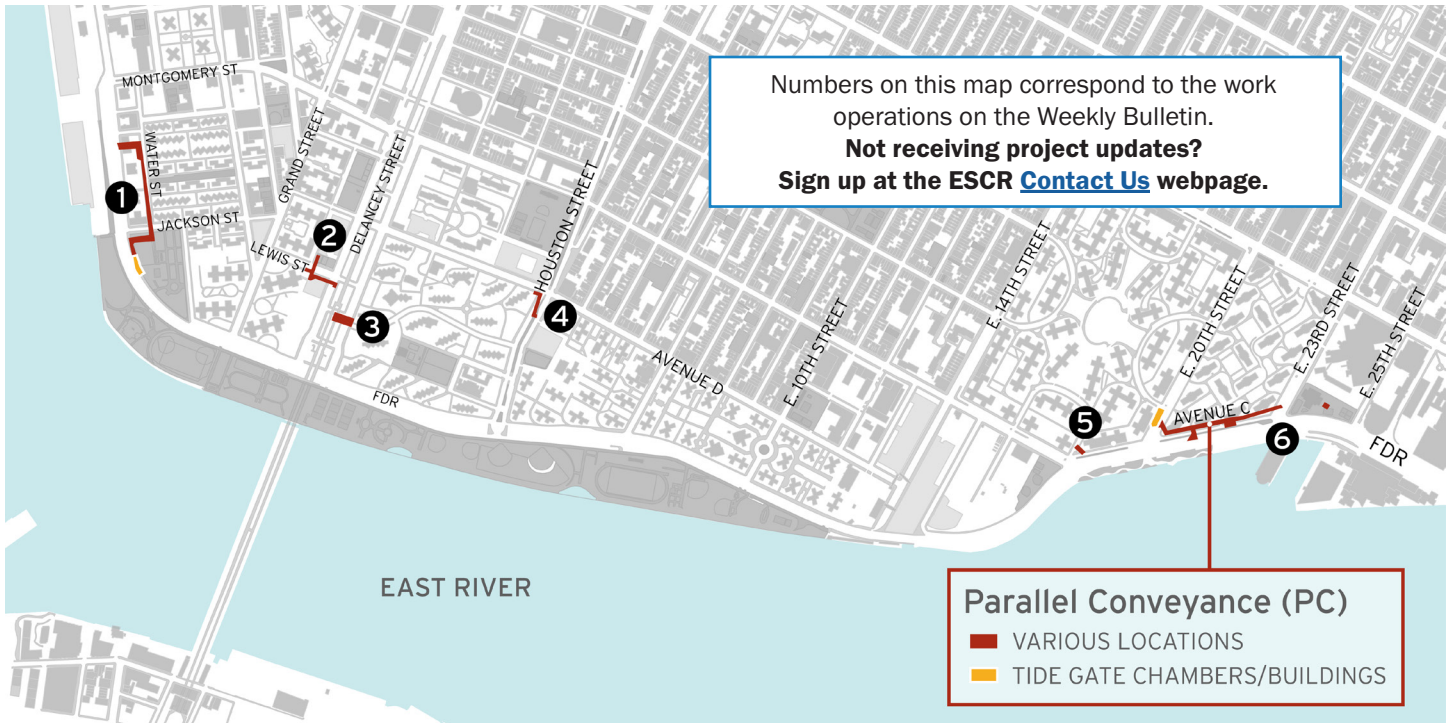


Floodwall work south of Murphy Brothers Playground, December 2023



Illustrative map of Project Area 2





## Parallel Conveyance (PC)

Various locations from Montgomery Street to E. 25th Street

The Parallel Conveyance (PC) project is upgrading the sewer system to provide flood protection during storms. While PA1 and PA2 protect the community from coastal/tidal flooding and saltwater, the PC upgrades will protect the community during heavy rainfall events. The project optimizes the existing stormwater system by adding new drainage parallel to the existing infrastructure.

Test pits continue being used to survey subsurface conditions throughout the project areas. Water main upgrades and utility relocation in the southern project areas have also begun, particularly around Gouverneur Slip, Water Street, and Jackson Street adjacent to Corlears Hook Park. Community impacts have primarily been limited to street parking restrictions in construction areas. Some buildings have experienced scheduled, temporary water service interruptions while the contractor replaces the old water mains. We thank you for your patience as we construct this critical infrastructure.

### What is a test pit?

Before construction work can begin, the contractor must make small excavations—called test pits—around the project area to survey subsurface conditions and to locate underground utilities. While the city provides approximate locations for utilities, many were installed 100 years ago or may have been modified during emergency work, and therefore the exact locations must be confirmed. Test pits are particularly important for this project because much of the work involves upgrading utilities, in addition to the sewer expansion work. Test pits are performed in a variety of sizes, as you can see in the examples from PA1, to the right.



Crews excavating for test pit (PA1), November 2023



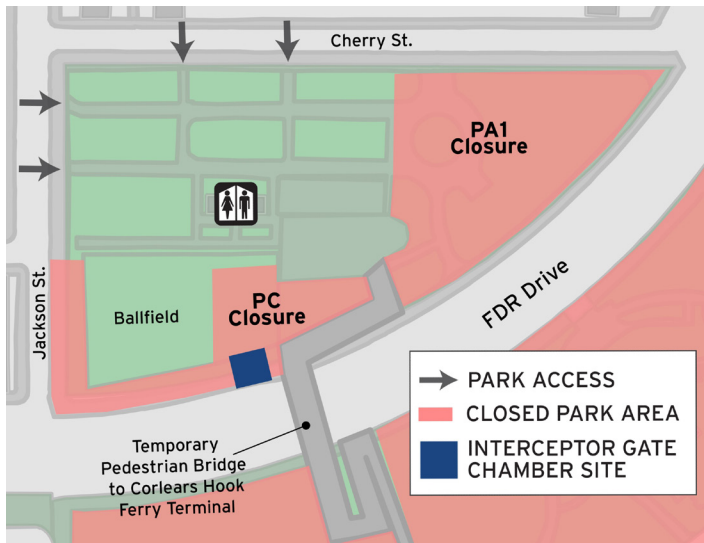
Test pit excavation to locate ConEd utility ducts (PA1), November 2023



## Interceptor Gate Chamber

At the end of 2023, we announced the **partial** closure of the Corlears Hook Park playground and ballfield (see illustrative map below) to make room for staging, storage, and excavation associated with the four-story interceptor gate chamber. The underground chamber will store water in the event of a heavy rainstorm, and the gate will isolate the protected area's sewer system from the unprotected area during a surge. More information about the playground and ballfield closures can be found in the [December 2023 Community Board 3 presentation](#).

In 2024, additional critical elements of the PC project will begin – excavations for deep sewer work. Because the sewer system sits beneath all other utilities, these excavations are a big undertaking! Please check the ESCR website's [PC Construction Notices page](#) for more information.



Illustrative map of Corlears Hook Park closures, late-2023

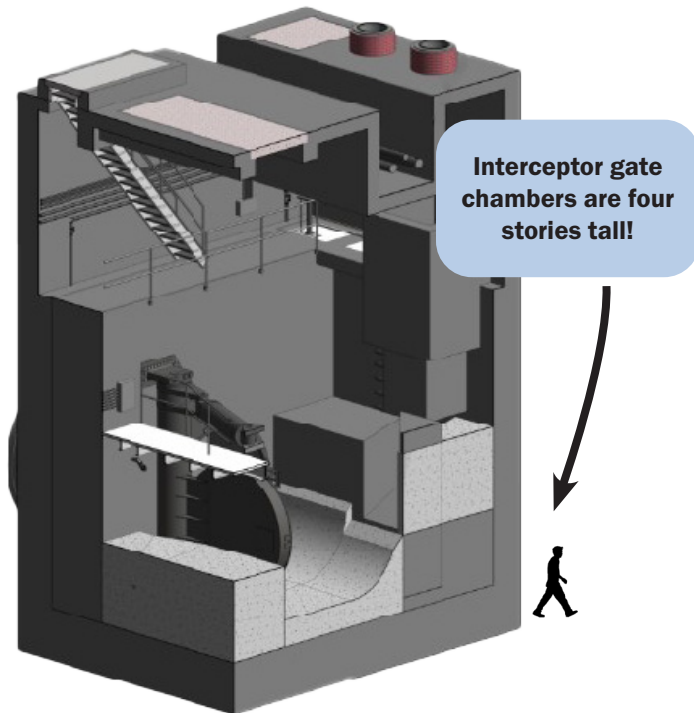


Illustration of interceptor gate chamber (not to scale)



ESCR Tabling in Corlears Hook Park, October 2023

## ESCR in the Community

### Community Outreach Event

The ESCR Community Engagement team will continue coordinating with the project's surrounding community to attend tenant/resident association meetings and Family Days, along with hosting our own tabling events. Events during the second half of this year included:

- 7/11/23: Tabling @ E. 6th Street with Workforce1 (adjacent to NYCHA Riis Houses and Wald Houses)
- 7/18/23: Tabling @ NYCHA Vladeck Houses with Workforce1
- 8/1/23: Tabling @ NYCHA Rutgers Houses Family Day
- 8/15/23: Tabling @ NYCHA Baruch Houses with Workforce1
- 8/24/23: Tabling @ NYCHA Vladeck Houses & Gouverneur Gardens
- 9/12/23: Gouverneur Gardens TA Meeting
- 9/21/23: Resiliency + EXPO
- 9/21/23: Tabling @ E. Houston St & Columbia St.
- 10/5/23: Tabling @ Corlears Hook Park
- 11/3/23: NYU Students Visit PA2 with DDC NICE program

Please email [ESCRCL1@ddccr.com](mailto:ESCRCL1@ddccr.com) if you are interested in having the ESCR Community Engagement Team table in your neighborhood, or if you'd like the team to present construction updates to your building. We also deliver in-person and virtual presentations regularly. Subject to availability.

### Work With Us

East Side Coastal Resiliency (ESCR) project is a public investment that will help drive the City's economy and create jobs in New York City neighborhoods. Information on training, careers and contracting opportunities are posted on the [Work With Us webpage](#). We encourage individuals and local M/WBE and Section 3 firms to review these opportunities and resources, as well as the factsheet outlining the [ESCR Subcontracting and Hiring Goals](#).

In the second half of this year, the ESCR Community Engagement and Hiring teams coordinated with NYC SBS to bring the Workforce1 Mobile Unit to communities near the ESCR project. We held multiple events with Workforce1, at NYCHA Baruch, Vladeck, Riis and Wald Houses. The goal of these events is to provide residents with the latest

construction updates, along with information on job and training opportunities. The ESCR PMCM and contractor hiring team also participated in the NYCCDC Construction Career and Training Resource Fair on July 24, 2023.



ESCR tabling at DDC job fair, July 2023

The ESCR Team is continually working to make our hiring events helpful and relevant to the community. Please submit an inquiry on the [Work With Us webpage](#) if you have any questions or want to submit your resume.

### Emergency Preparedness

The ESCR project has coordinated with the New York City Emergency Management Department to develop a [webpage](#) of helpful links and resources for Emergency Preparedness. We encourage you to take a look.

### ESCR W/MBE firm Spotlight



[Melissa Johnson Associates](#) is a WBE-, DBE- and SBE-certified communications firm specializing in community outreach, stakeholder engagement, diversity programming, event production, marketing, public relations and graphic design, providing

outreach services under the PMCM. The firm is a reliable partner that helps government agencies and their consultants work effectively with stakeholders, communities and the public, and focuses on developing inclusive, equitable and innovative communication strategies. Thank you MJA!

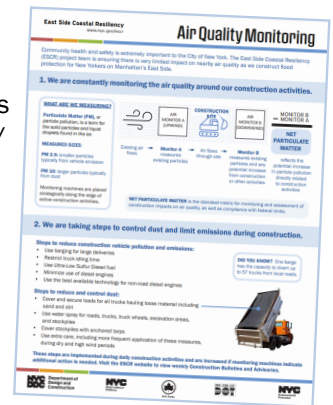
## Community Construction Information

### Community Impacts

- Vehicular travel lane closures, detours and new traffic patterns will be required.
- Cyclists and pedestrian detours will be required.
- Signage will be posted in advance within the affected areas. Traffic Enforcement Agents and flaggers will be present when necessary to assist vehicles and pedestrians.
- Public transportation will be maintained at all times.
- Emergency vehicle and pedestrian access to sidewalks will be maintained at all times.
- Water Service Interruptions: During the project there may be some service interruptions. To allow for water line replacement, existing water service must be temporarily shut off. Advance notice will be provided before any service interruption.

### Environmental Monitoring

- Air, noise, and vibration monitors are active 24 hours/day, 7 days/week at locations required for construction.
- Air monitoring summaries are available on the [ESCR Environmental Monitoring webpage](#), with verbal updates provided at [CAG meetings](#).
- The project follows all federal, state and local guidelines. To date, construction activities have not exceeded National Ambient Air Quality Standards.
- Check out the [ESCR Environmental Fact Sheet](#) for more!



## Happy Holidays

From all of us on the ESCR team, we wish you a happy and healthy holiday season! We look forward to bringing you more exciting project updates in 2024!

### For More Information:

Visit the ESCR website, [nyc.gov/escr](http://nyc.gov/escr), to sign up to receive weekly Construction Bulletins, Community Advisories, and other project communications, as well as to learn more about community meetings and events, ESCR background, design, and construction, and opportunities to work with us. Or submit an inquiry: [nyc.gov/escr/contact](http://nyc.gov/escr/contact)

### Questions? Preguntas? 问题?

Please contact our **Community Construction Liaisons (CCLs)** for any project related inquiries/concerns you may have:

#### Project Area 1 CCLs:

**Pauline Chan** (欢迎中文咨询): 929-717-9015  
**Vanessa Gomez** (para mas información llame): 347-628-8724  
**Email:** [ESCRCL1@ddccr.com](mailto:ESCRCL1@ddccr.com)

#### Project Area 2 CCL:

**Nadine Harris:** 347-572-3057 & [ESCRCL2@ddccr.com](mailto:ESCRCL2@ddccr.com)

#### Parallel Conveyance CCL:

**Tannia Wokoun:** 914-313-6863 & [sandrespc.ccl@gmail.com](mailto:sandrespc.ccl@gmail.com)



ESCR Inquiry Tool