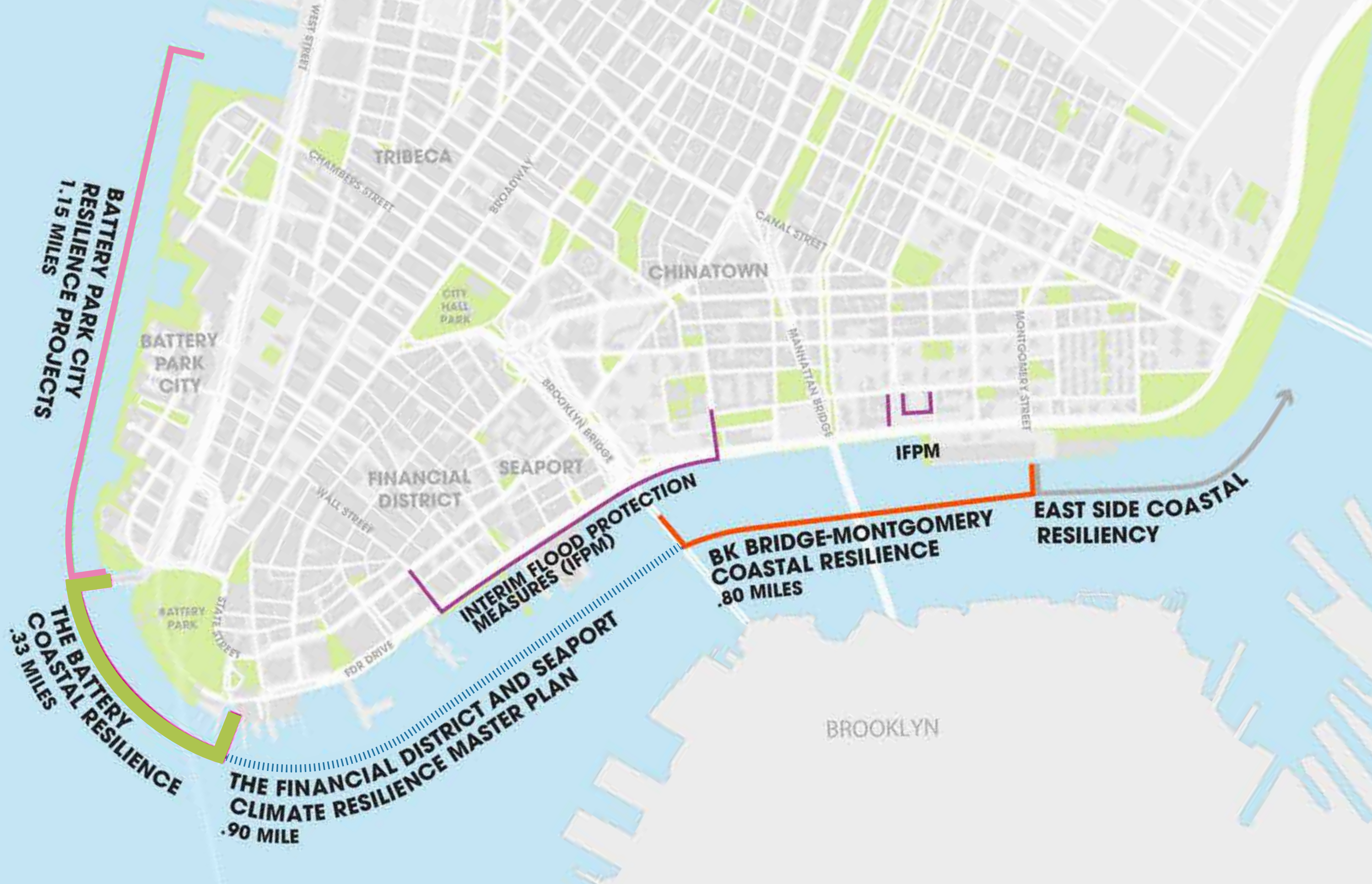


LOWER MANHATTAN COASTAL RESILIENCY PROJECT – BATTERY

Public Design Commission Final Submission Review
August 8, 2022





**BATTERY PARK CITY
RESILIENCE PROJECTS
1.15 MILES**

**THE BATTERY
COASTAL RESILIENCE
.33 MILES**

**THE FINANCIAL DISTRICT AND SEAPORT
CLIMATE RESILIENCE MASTER PLAN
.90 MILE**

**INTERIM FLOOD PROTECTION
MEASURES (IFPM)**

**BK BRIDGE-MONTGOMERY
COASTAL RESILIENCE
.80 MILES**

**EAST SIDE COASTAL
RESILIENCY**





LEGEND

- GRANITE BACKED BENCH
 - BACKED BENCH
- BACKLESS BENCH
 - ⊕ LIGHT
- RAMPS WITH HANDRAILS
 - SECURITY FENCING
- PROJECT BOUNDARY



LEGEND

- GRANITE BACKED BENCH
 - BACKLESS BENCH
 - BACKED BENCH
- RAMPS WITH HANDRAILS
 - NEW / RESTORED PLANTING
- - - SECURITY FENCING
 - PROPOSED TREE
- - - PROJECT BOUNDARY
- LIGHT

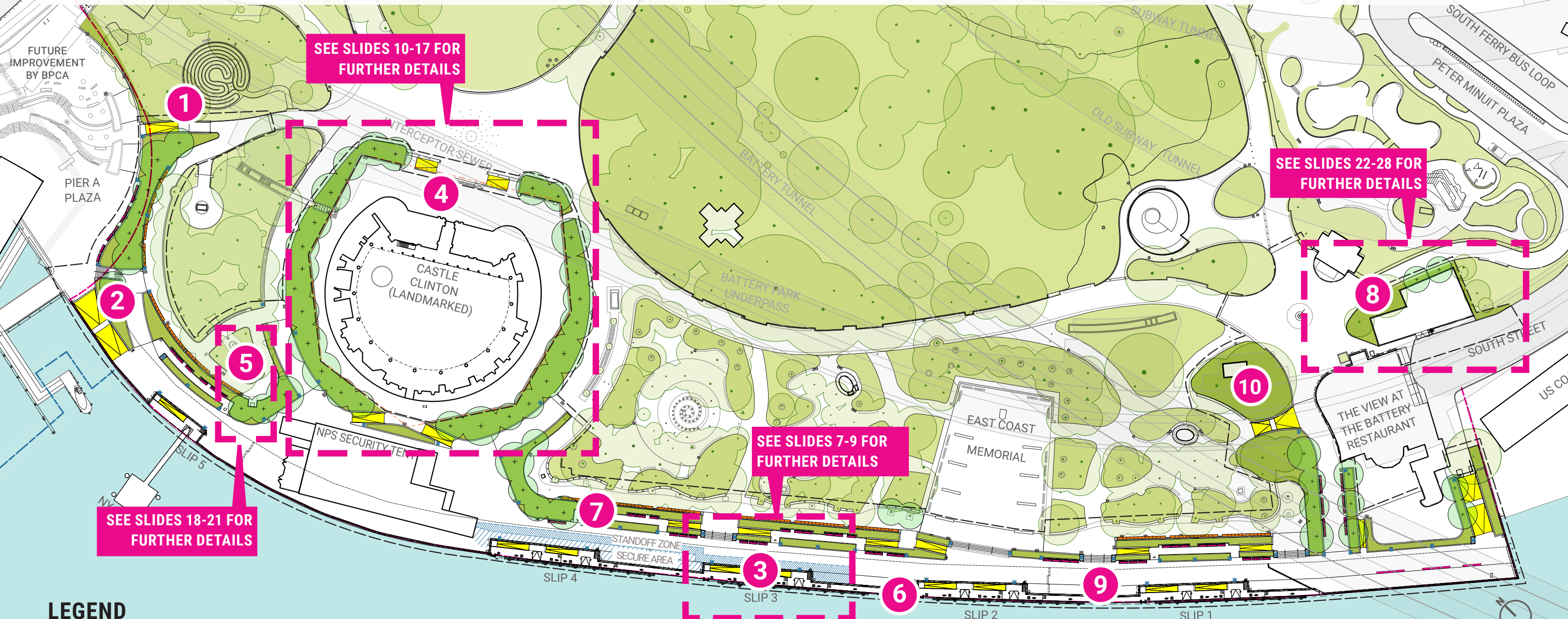


LEGEND

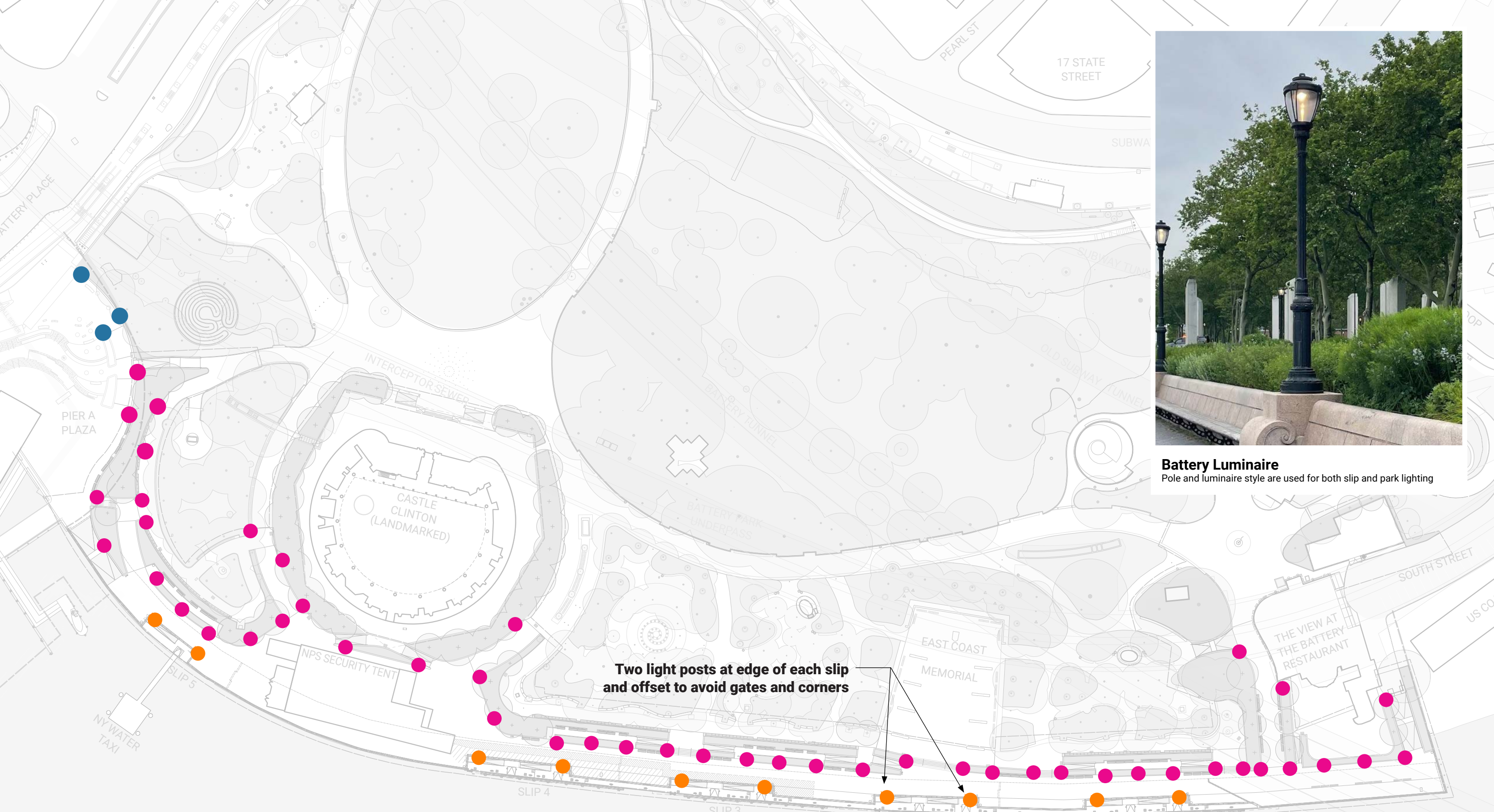
- GRANITE BACKED BENCH
 - BACKLESS BENCH
 - BACKED BENCH
- RAMPS WITH HANDRAILS
 - NEW / RESTORED PLANTING
- - - SECURITY FENCING
 - PROPOSED TREE
- - - PROJECT BOUNDARY
- ⊕ LIGHT

DESIGN CHANGES

- 1 Pier A ramp connecting to BPCA landing realigned.
- 2 Alignment for the northern ramp between Pier A and the Battery has been refined.
- 3 Two (2) Lightpoles have been added at each slip to provide better lighting.
- 4 Four (4) existing London Plane trees and one (1) existing Crabapple tree within the planted area around Castle Clinton will be removed due to poor health, and new planting are proposed for that area. Ramps added to provide better universal access.
- 5 The Emma Lazarus Memorial relocated towards the southwest per request of Parks to help alleviate damage from skateboards and vehicles.
- 6 River that Flows Two Ways panels shifted to avoid slip piles and expansion joints.
- 7 Armrest design advanced to improve users' experience.
- 8 The M&O area has been developed further to accommodate Parks' needs.
- 9 Paving and furnishing materials finalized. (3) metal plates along promenade serve as expansion joint covers. See page 31 for material palette.
- 10 Extent of planting at East End Tie In revised.



GRANITE BACKED BENCH	BACKLESS BENCH	RAMPS WITH HANDRAILS	SECURITY FENCING	PROJECT BOUNDARY
BACKED BENCH	LIGHT	NEW / RESTORED PLANTING	PROPOSED TREE	



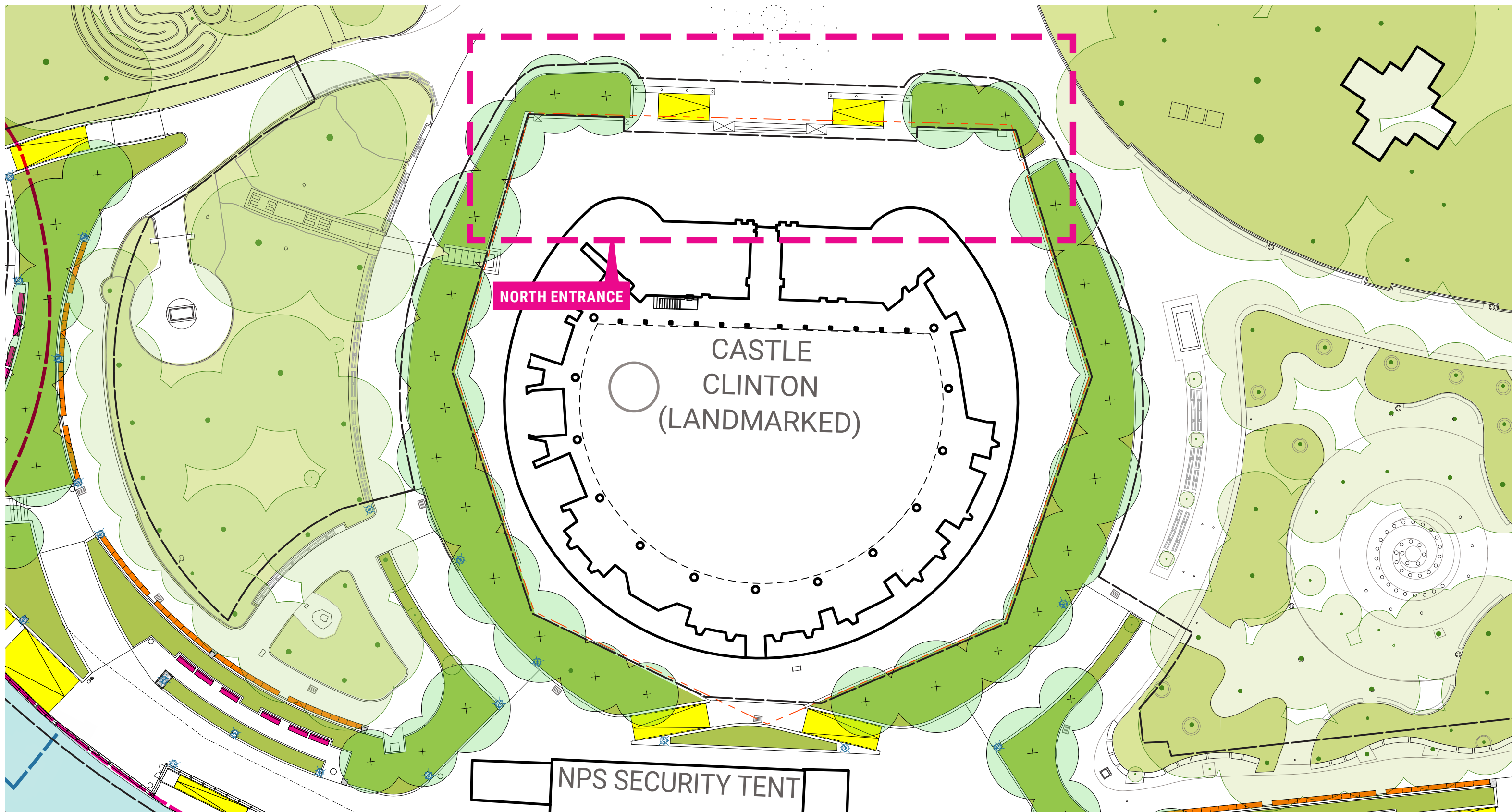
Battery Luminaire
 Pole and luminaire style are used for both slip and park lighting

LEGEND

- ADDITIONAL PROPOSED LIGHTING
- BPCA LIGHTING (BY OTHERS)
- PROPOSED LIGHTING (APPROVED IN APRIL 15 AMENDED PRELIMINARY)

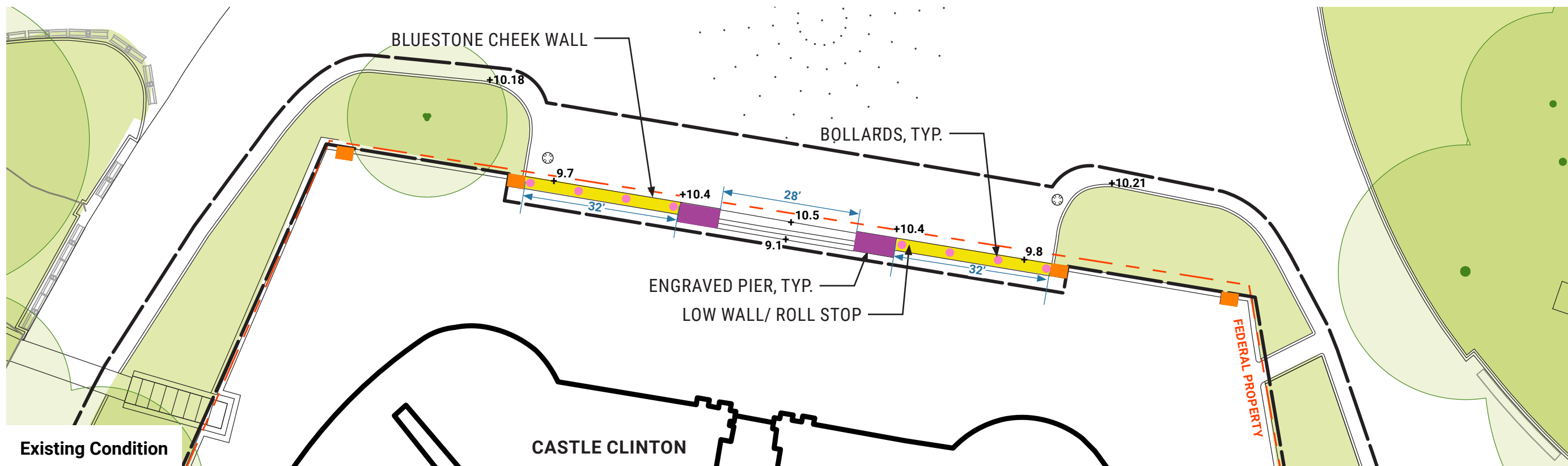






LEGEND

- GRANITE BACKED BENCH
 - BACKLESS BENCH
 - BACKED BENCH
- RAMPS WITH HANDRAILS
 - NEW / RESTORED PLANTING
- ⊙ LIGHT
 - PROPOSED TREE
 - - - LIMIT OF WORK



Existing Condition

Piers/ Bollards



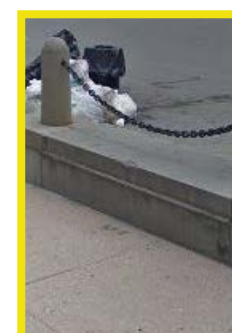
Engraved Pier



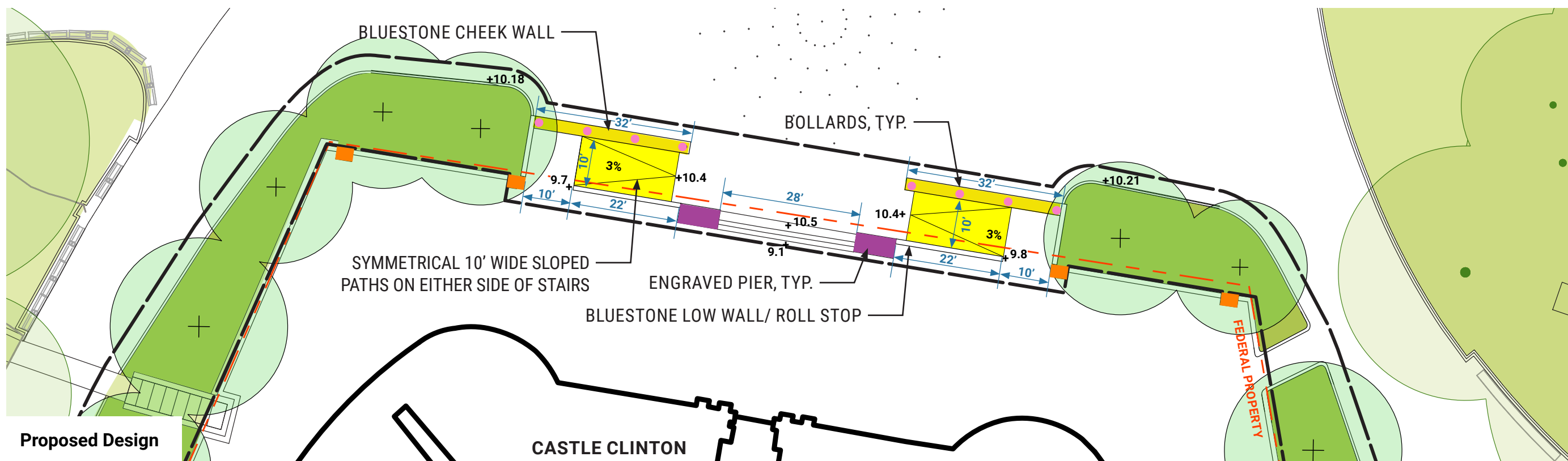
Pier



Bollard



Cheek Wall



Proposed Design

LEGEND

- GRANITE BACKED BENCH
 - BACKED BENCH
- RAMPS WITH HANDRAILS
 - NEW / RESTORED PLANTING
- PROPOSED TREE
 - LIMIT OF WORK

Note: Bollards and cheek walls to be salvaged for reuse. Piers to remain in place.

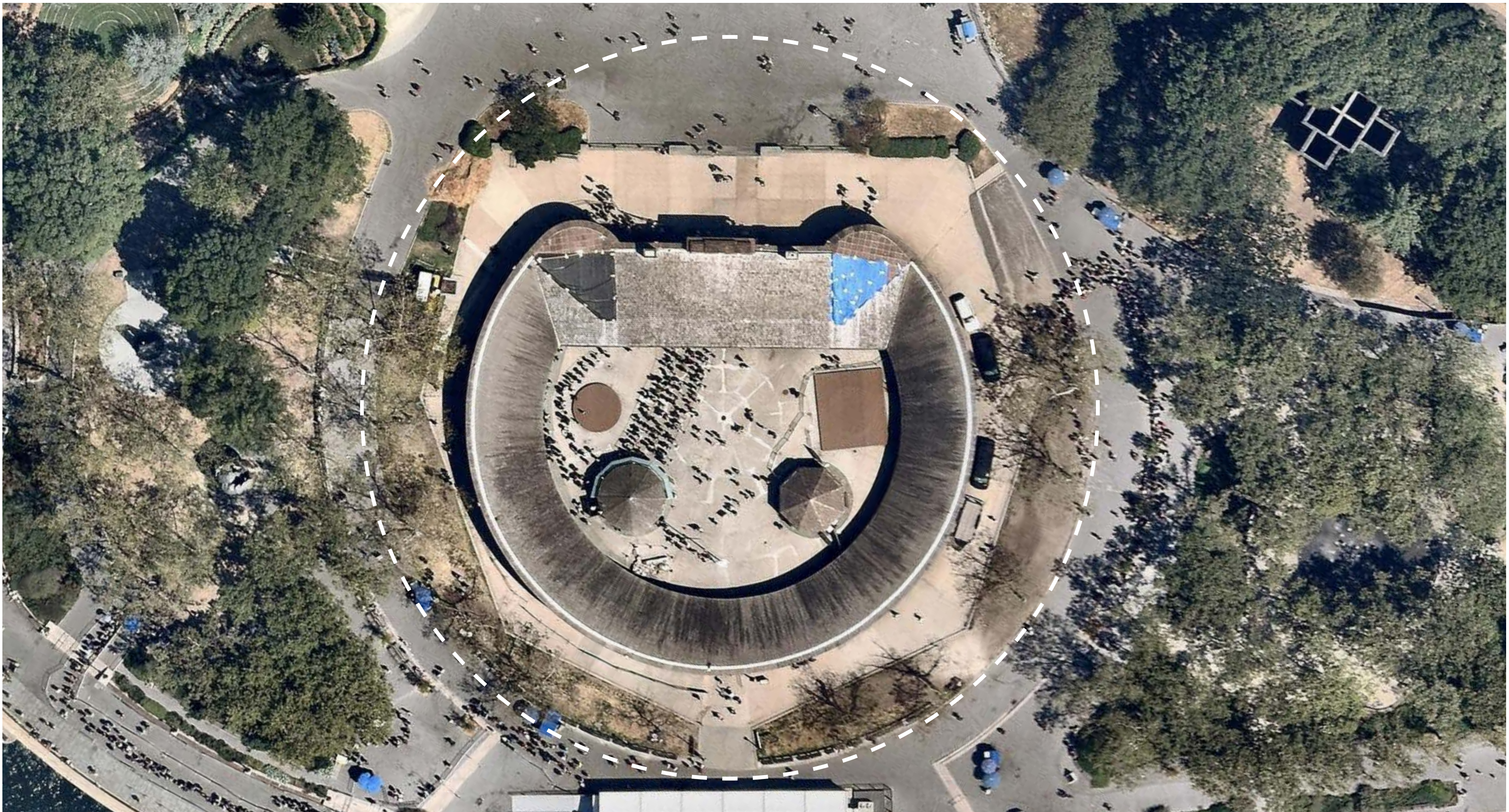


Tree
doesn't
exist
today

Existing Condition



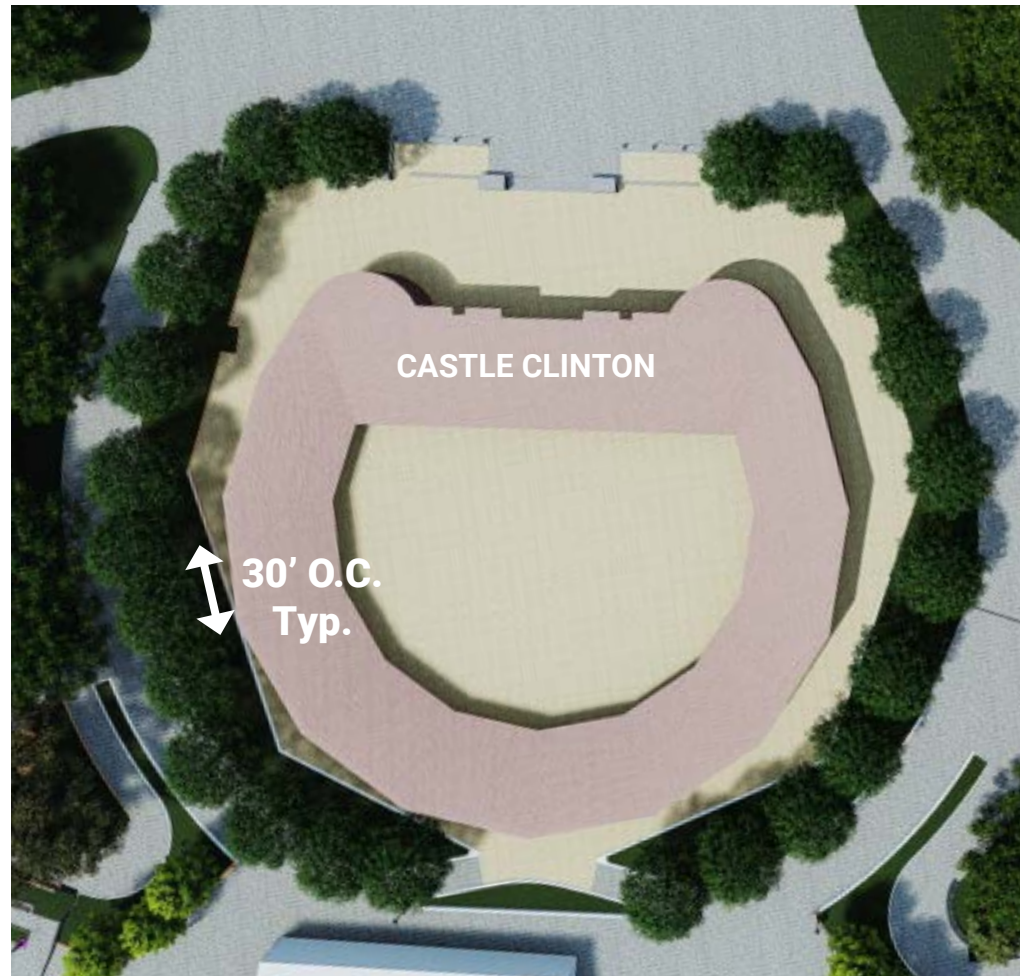
Proposed Design



- Without trees there would be a lack of shade in this dashed area
- Four (4) existing London Plane trees and one (1) existing Crabapple tree within the planted area around Castle Clinton will be removed due to poor health, and new plantings are proposed for the entire plant bed around Castle Clinton

Quercus Phellos

- 40'-75' Height, 25-50' Spread
- Grows fast
- Oval to rounded crown, willow-like leaves
- Golden-brown fall color
- Fruits are rounded acorn cups (to 1/2" long)
- Tolerant of occasionally saturated or very wet soils as well as periods of drought (Cornell)
- Tolerant to slightly alkaline pH (up to 7.4) of specified Green Infrastructure soils
- Generally tolerant of urban pollution and coastal conditions
- High salt spray and soil salt tolerance
- Moderate wind resistance
- Clearly thrives in The Battery
- On NYC Parks Coastal Tree Species List



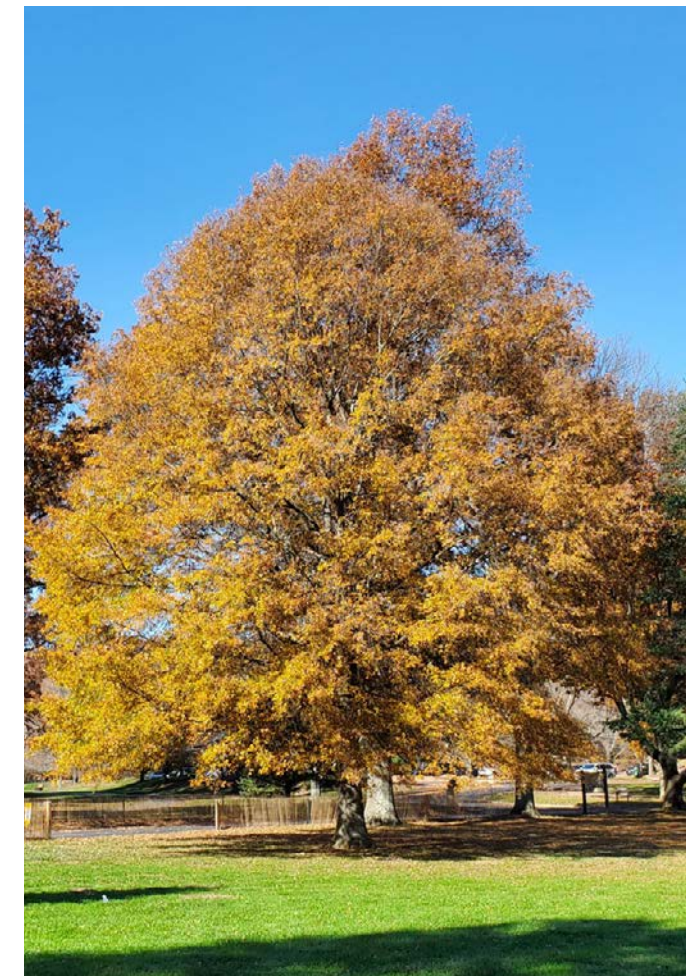
Typical Spacing



~5 Years



20+ Years



Fall color



Existing Condition

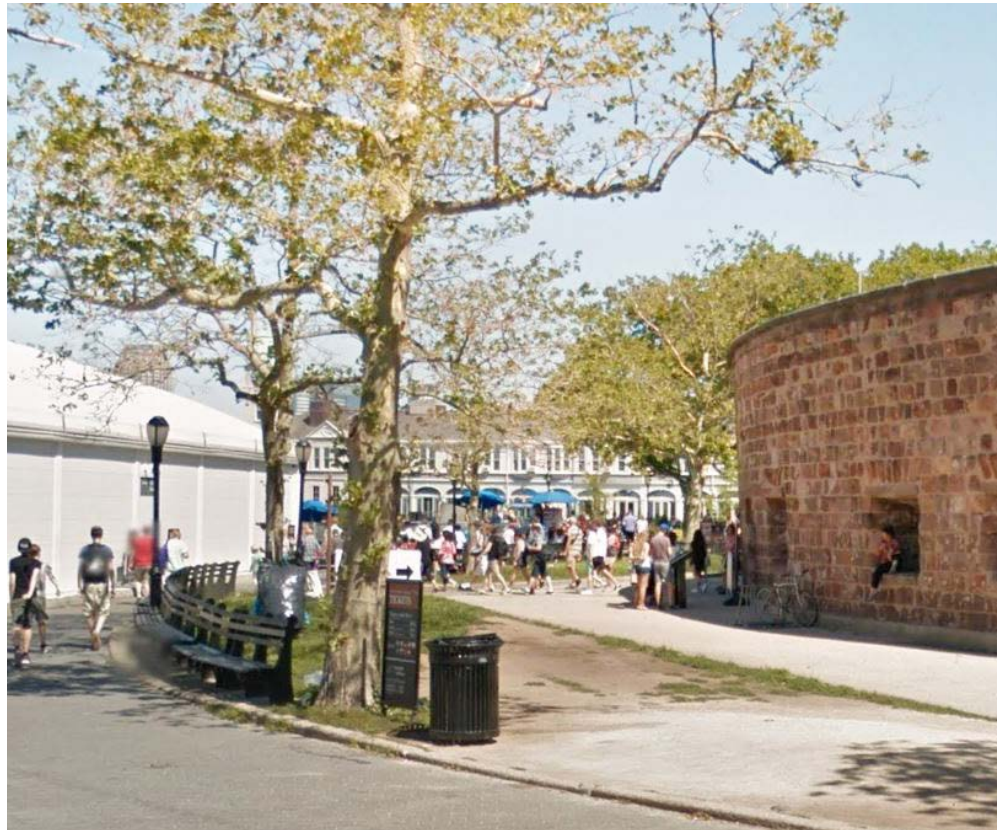
Tree Spacing Range (30'):

- Trees are far enough apart to grow an appealing, species-typical canopy structure.
- Trees are close enough that the canopies will touch, creating even shade for underplantings.
- Trees would be limbed up to have view of restored Castle Clinton.
- Minimal root competition between trees and tough herbaceous underplantings for optimal planting development.



Proposed Design

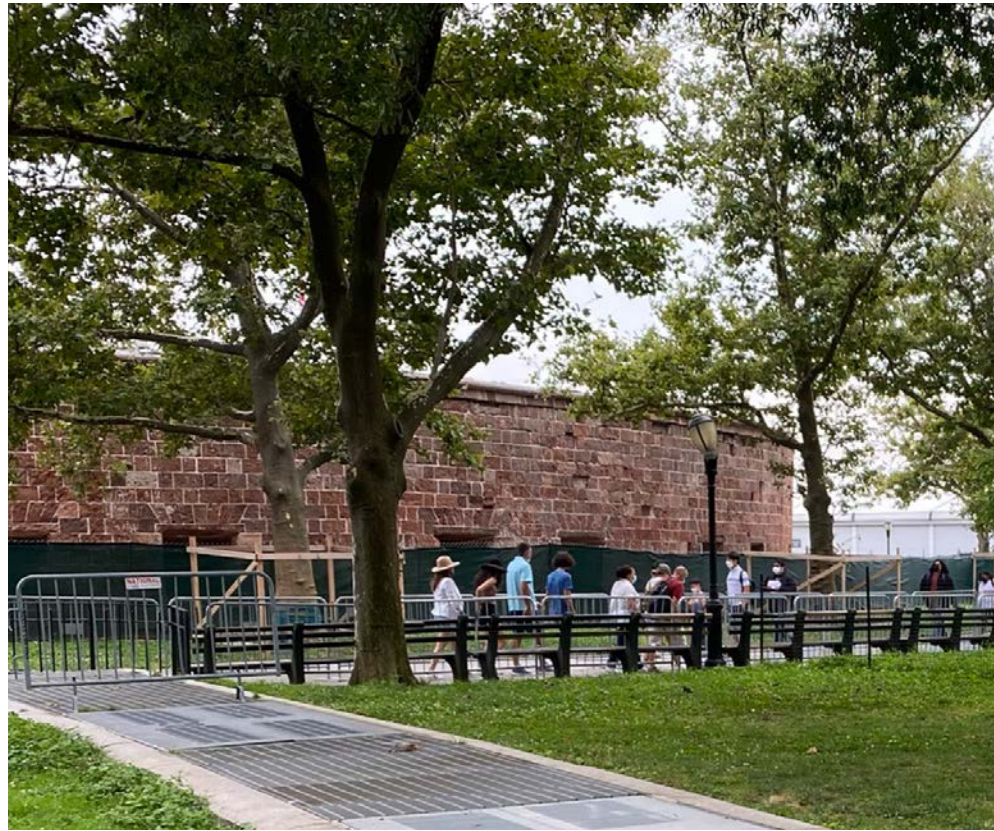
Existing



Proposed Spacing

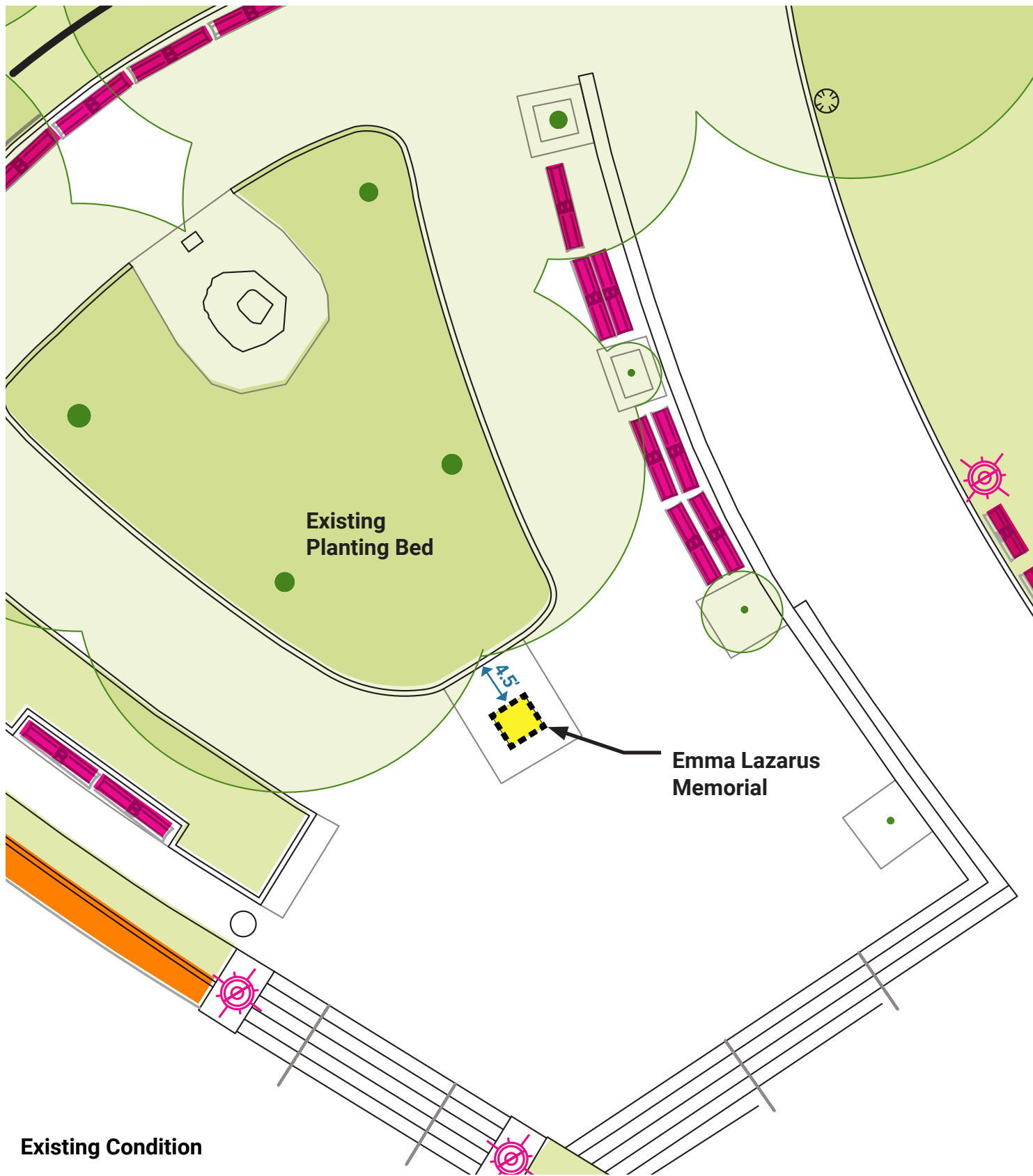


Existing



Proposed Spacing





Existing Condition

LEGEND

- GRANITE BACKED BENCH
- BACKED BENCH
- 4.5'
- LIGHT

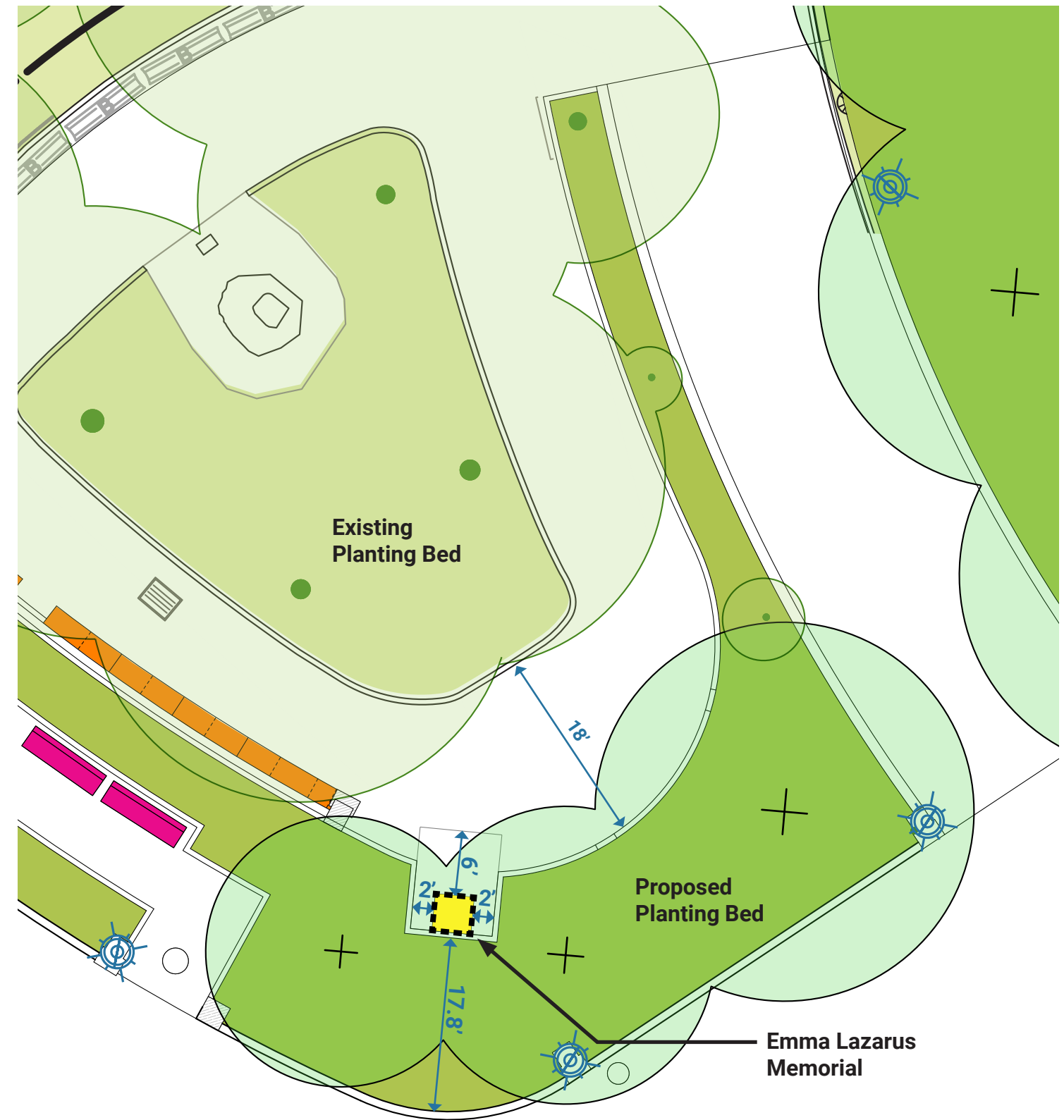


Emma Lazarus Memorial
Flush granite cobble strip





Approved April 15th Amended Preliminary Plan



Proposed Design

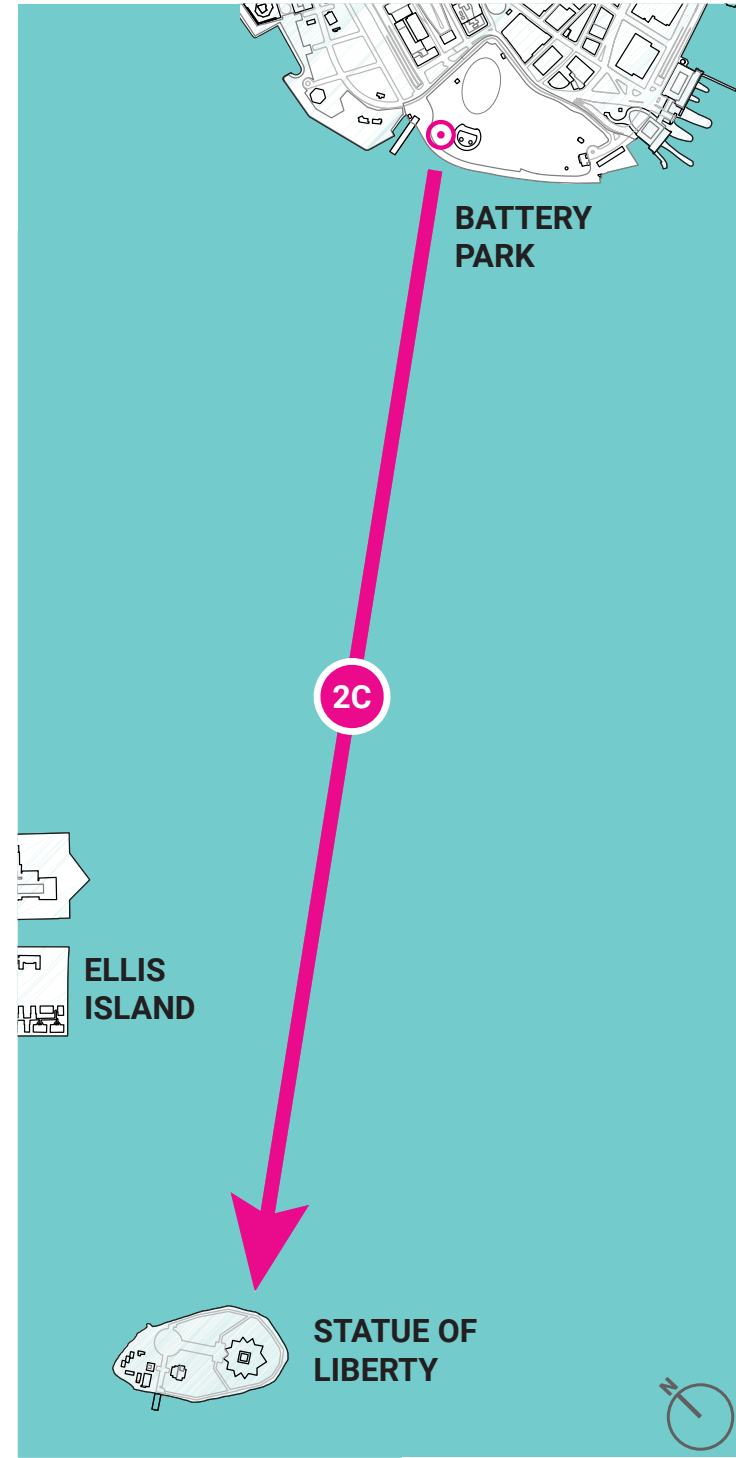
LEGEND

- GRANITE BACKED BENCH
- BACKED BENCH
- LIGHT
- NEW / RESTORED PLANTING
- PROPOSED TREE

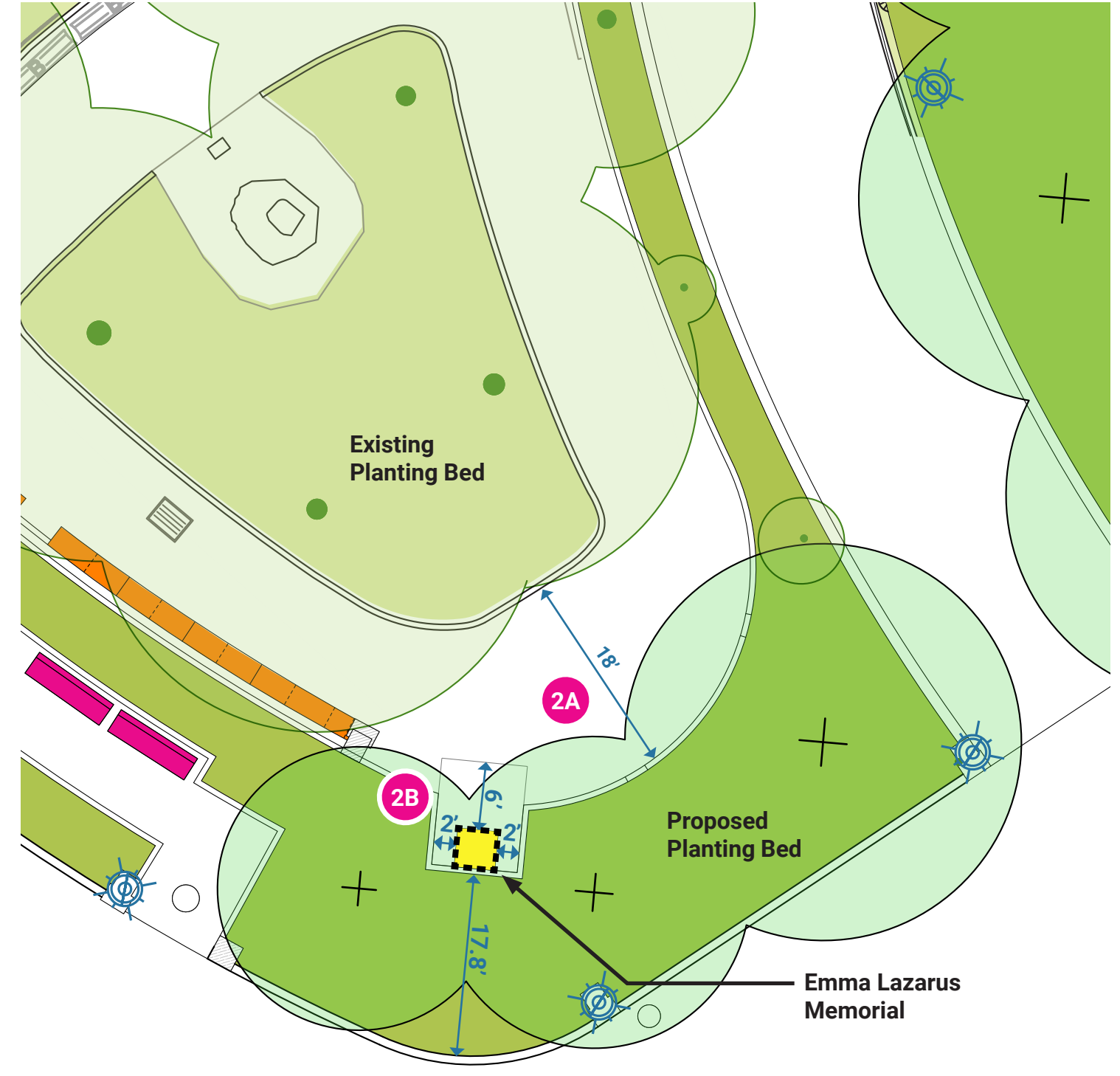


DESIGN CHANGES

- 2A** The Emma Lazarus Memorial has been relocated towards the southwest per request of Parks to prevent damage from skateboards and vehicles
- 2B** The memorial is protected by planting on three sides.
- 2C** The proposed location has a direct view of Statue of Liberty in its background.



Relationship to Statue of Liberty



Proposed Design

LEGEND

- GRANITE BACKED BENCH
- BACKED BENCH
- LIGHT
- NEW / RESTORED PLANTING
- PROPOSED TREE





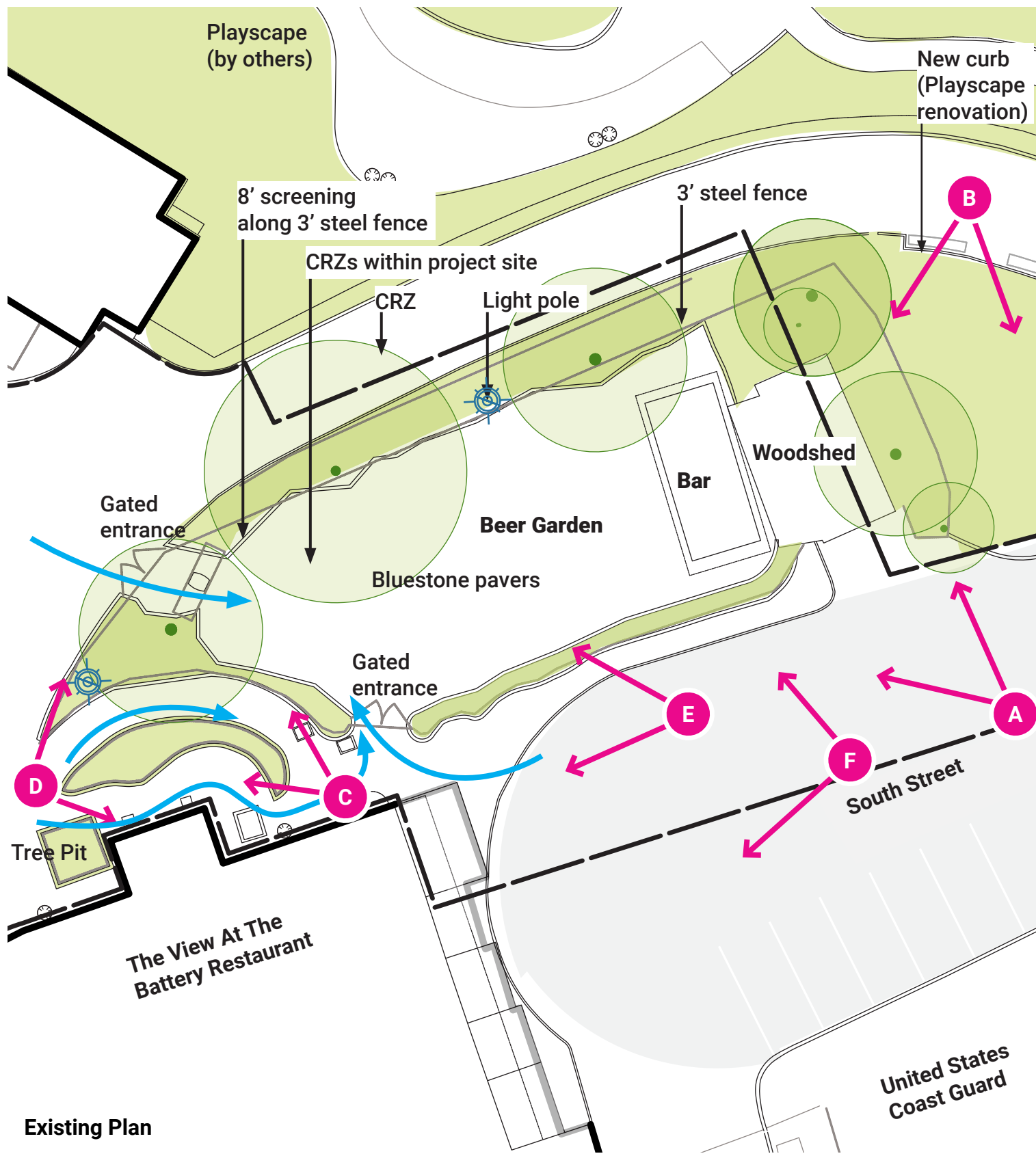
PLAYSCAPE

EXISTING BEER GARDEN/ PROPOSED MAINTENANCE AND OPERATIONS AREA FOR DPR DISTRICT 1

THE VIEW AT THE BATTERY RESTAURANT

SOUTH STREET

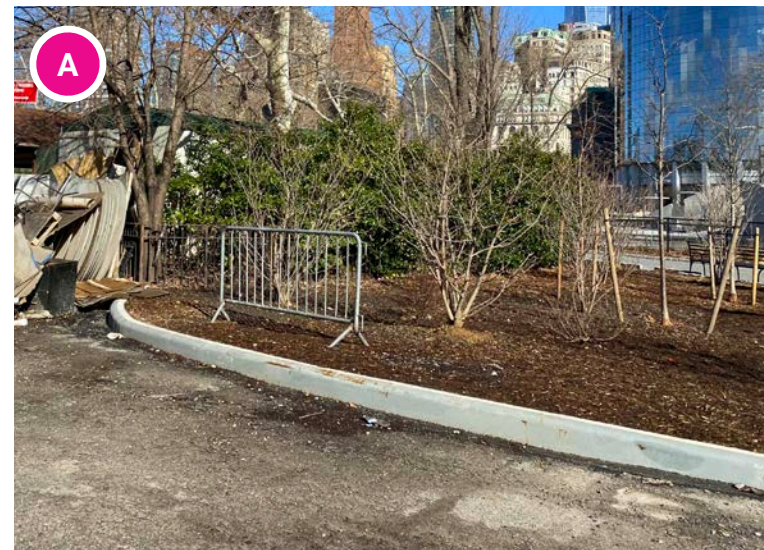
US COAST GUARD



Existing Plan

LEGEND

- NEW / RESTORED PLANTING
- LIMIT OF WORK
- LIGHT



New concrete curb (playscape renovation)



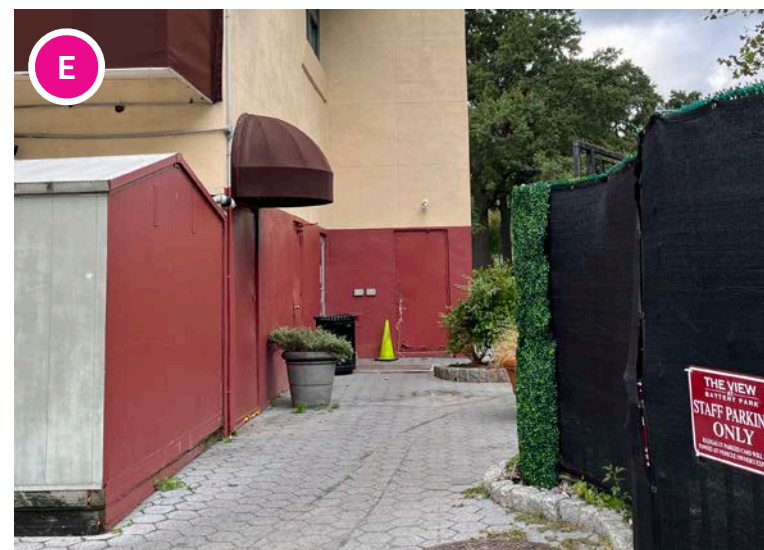
Battery Park Luminaire



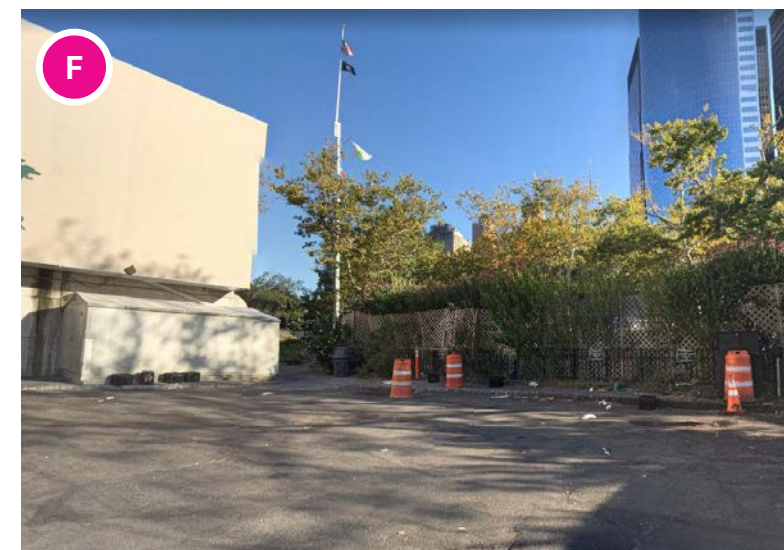
8' screening along 3' steel fence



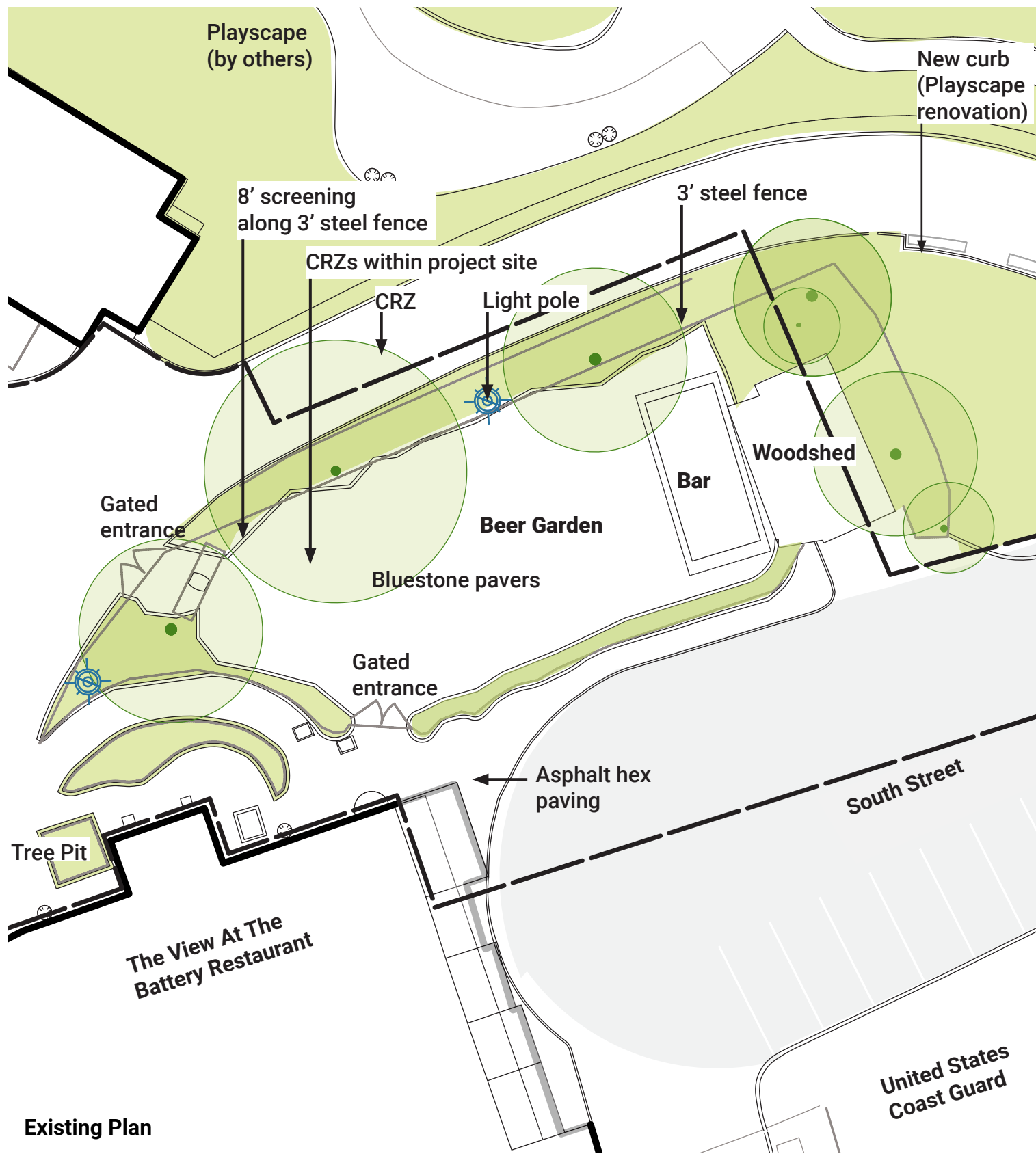
Planters to the north of The View at The Battery



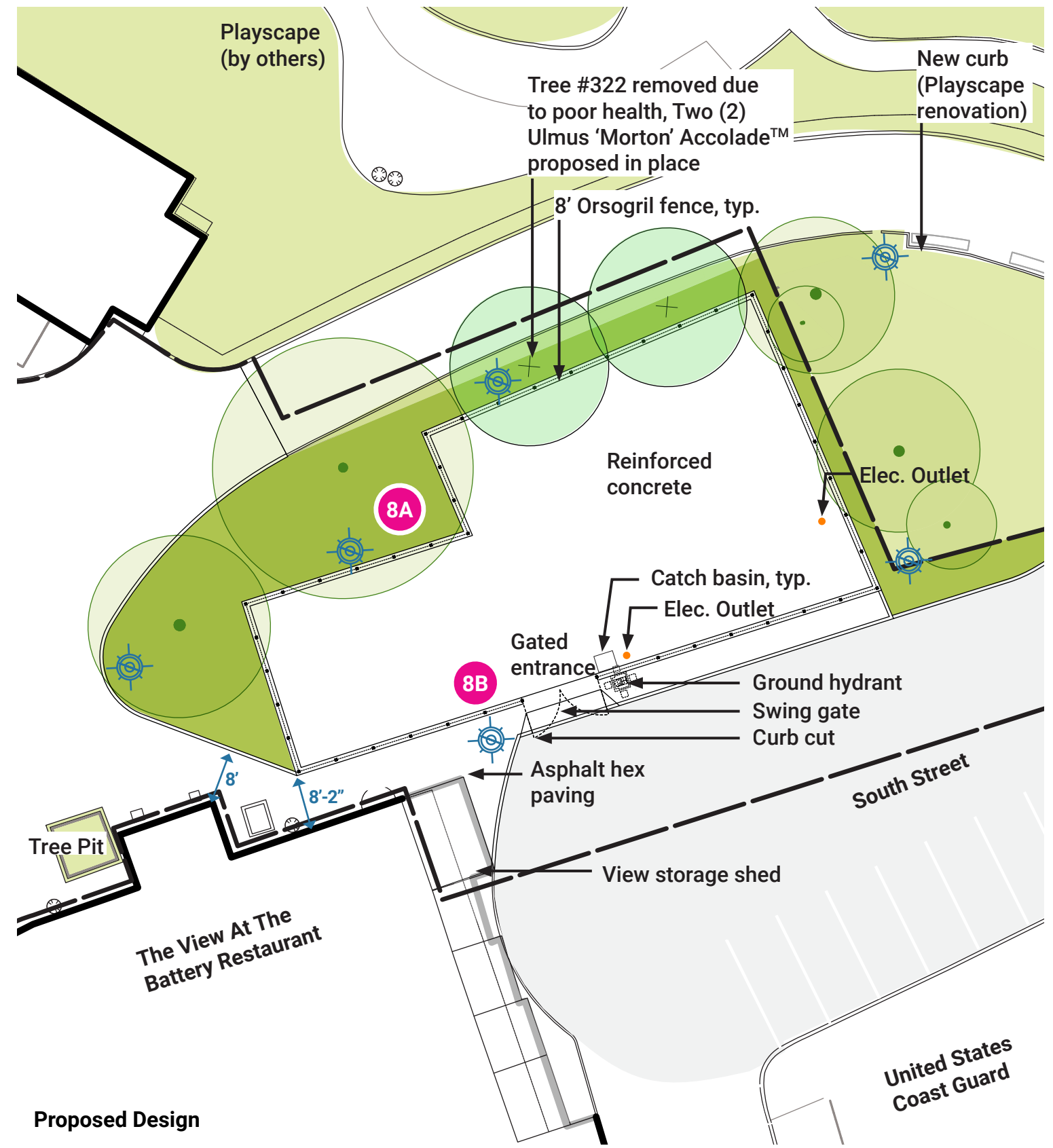
Path to The View at The Battery entrance and The Battery



Beer Garden from South Street



Existing Plan



Proposed Design

LEGEND

- NEW / RESTORED PLANTING
- LIMIT OF WORK
- +
 PROPOSED TREE
- ⊙
 LIGHT

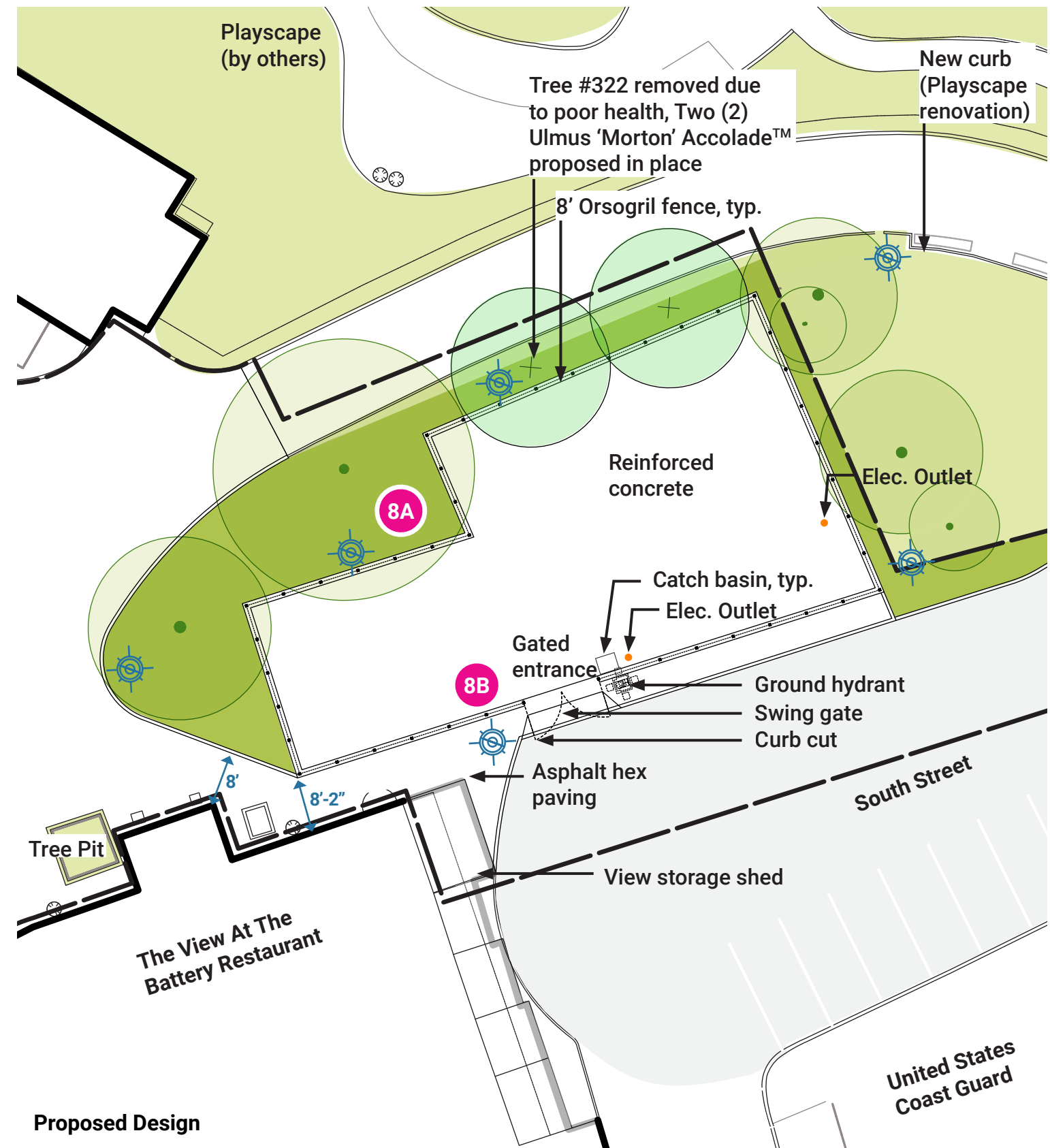


DESIGN CHANGES

- 8A** Adjustment of the footprints of the paved area and surrounding planting
- 8B** Further development of the fence and gate design materials

DESIGN NOTES

- Tree #332 removed to provide additional space for M&O area
- New pavement minimizes impacts to CRZ's to provide more M&O space for operations
- Pavement installed at existing beer garden elevation to reduce impacts to trees (drop curb located at gated entrance)
- Paved area will provide secure space for DPR M&O storage containers and vehicles, all of which are fence height or lower.



LEGEND

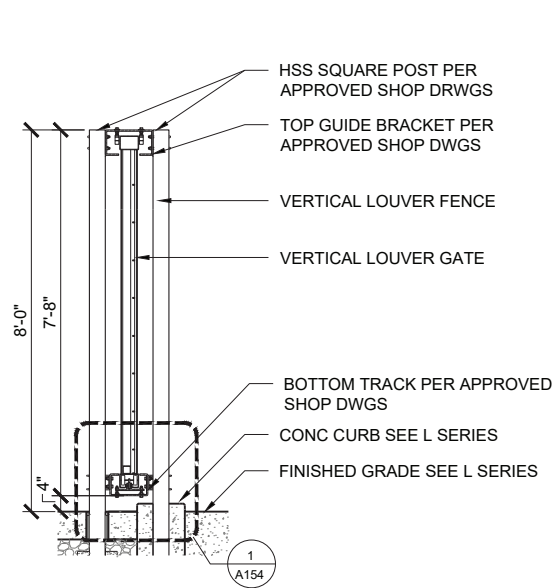
- NEW / RESTORED PLANTING
- LIMIT OF WORK
- + PROPOSED TREE
- ⊕ LIGHT



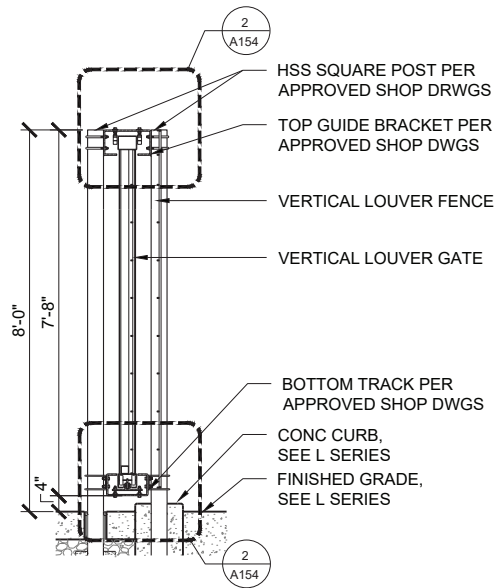
Existing view of Beer Garden from North Path



Proposed View of M&O Area from North Path



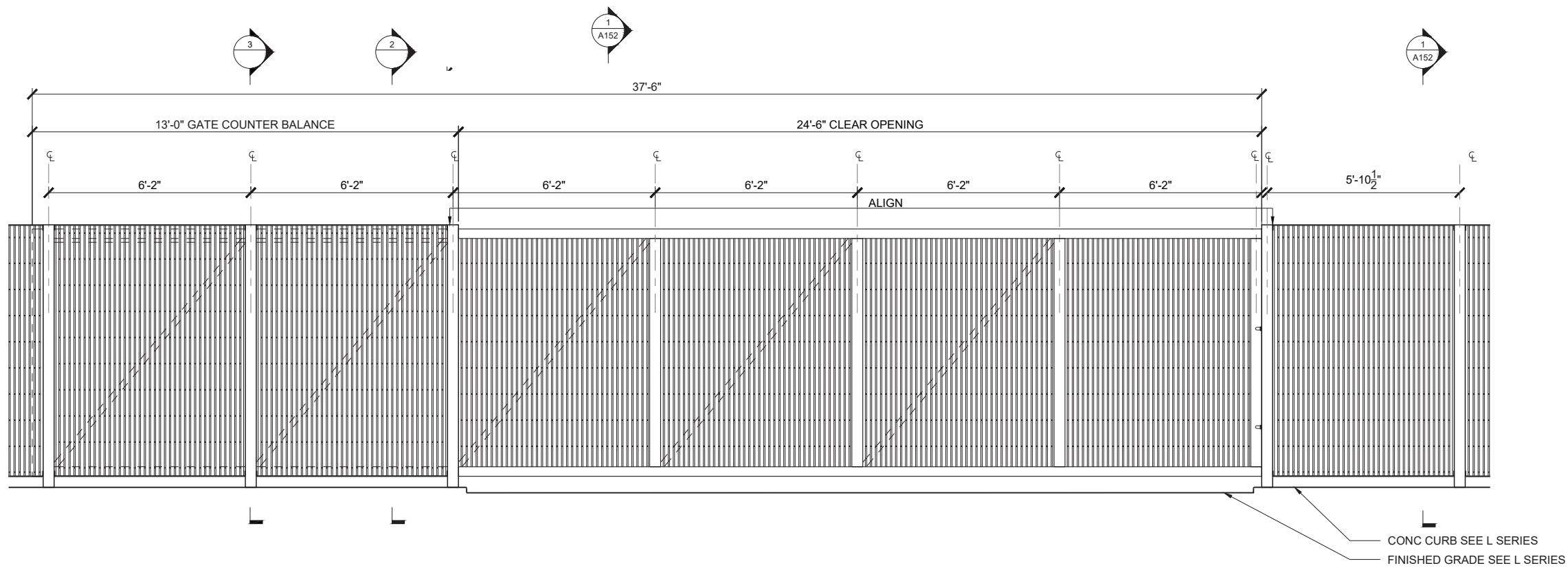
3 TYPICAL POST SECTION
SCALE: 1/2"=1'-0"



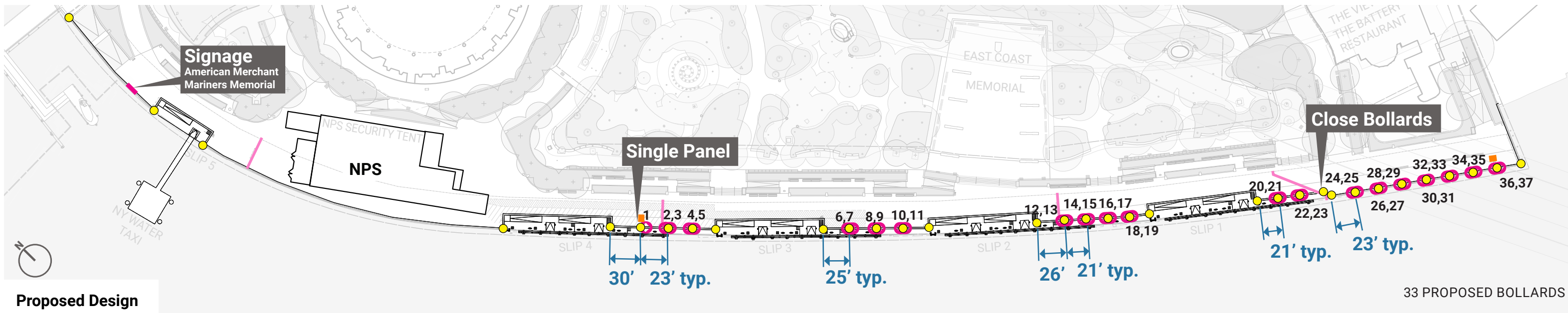
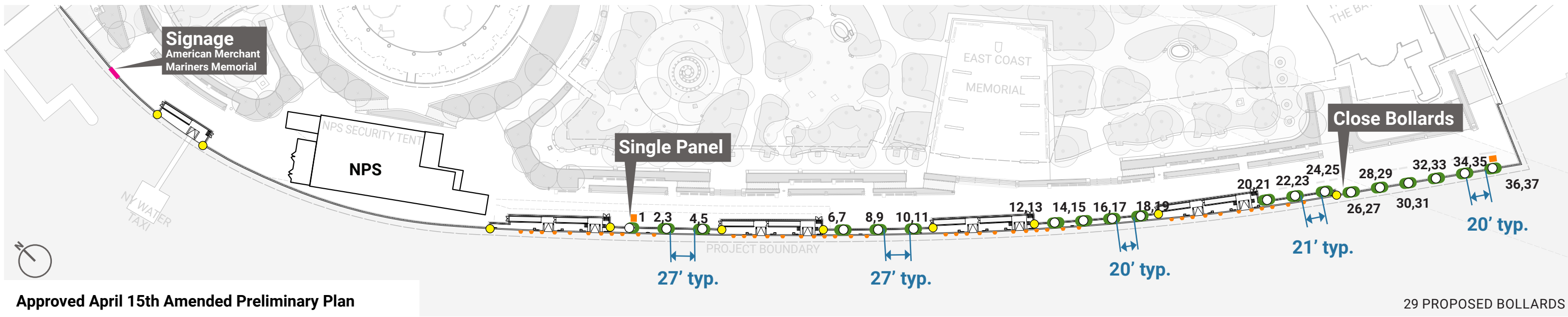
2 TYPICAL GATE SECTION
SCALE: 1/2"=1'-0"



8ft "Orsogrill Style" vertical fixed louvered panels

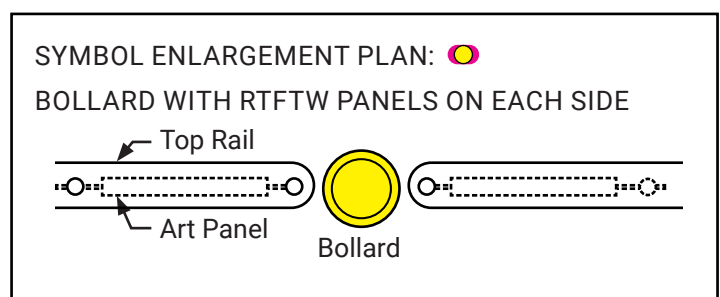


1 TYPICAL FENCE AND GATE ELEVATION
SCALE: 1/2"=1'-0"



LEGEND

- BOLLARDS
- PROPOSED BOLLARD WITH RTFTW PANELS ON EACH SIDE
- APRIL 15TH AMMENDED PRELIMINARY PLAN BOLLARD WITH RTFTW PANELS ON EACH SIDE
- EMBEDDED SIGNAGE IN THE PAVING
- PROPOSED FENDERS
- EXPANSION JOINTS

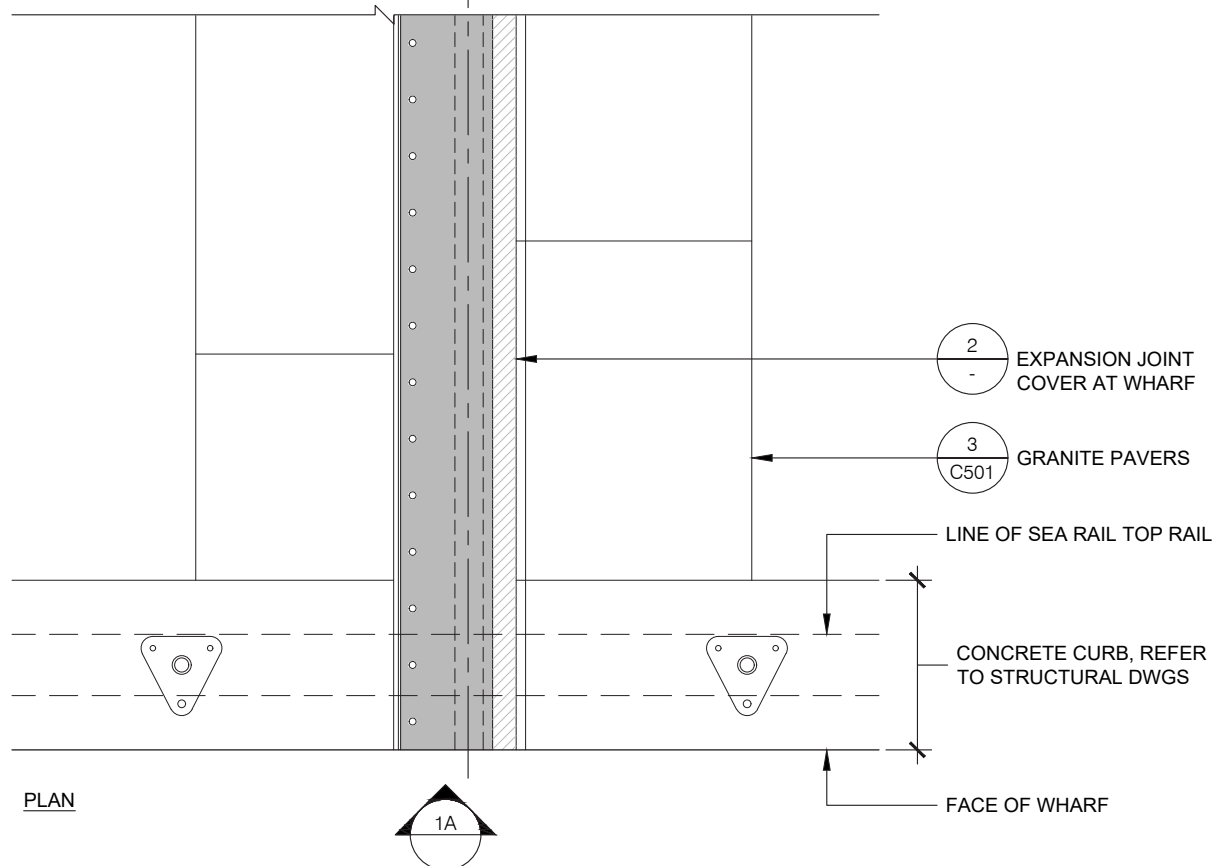
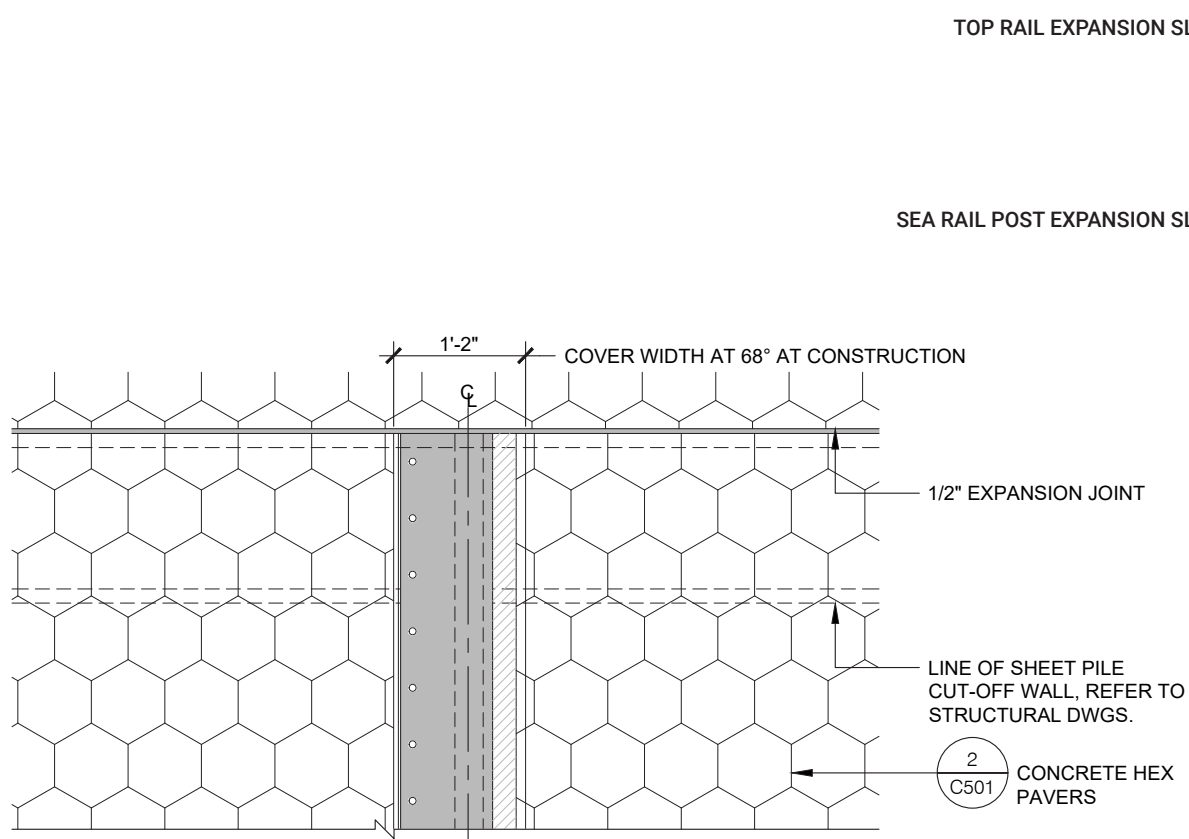


COUNTS

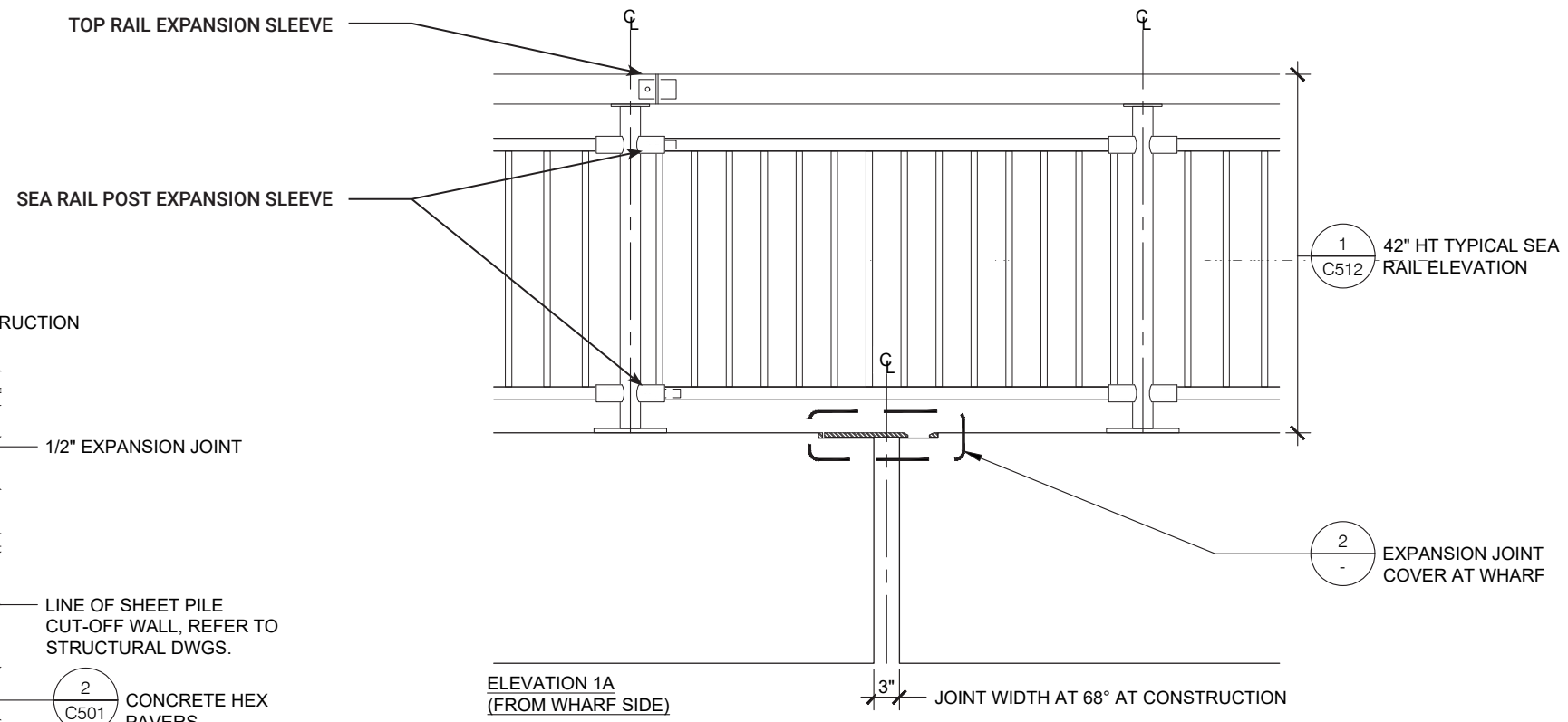
- 19 EXISTING BOLLARDS
- 29 APPROVED PRELIMINARY BOLLARDS
- 33 PROPOSED BOLLARDS
- 37 ART PANELS

EXISTING PANELS

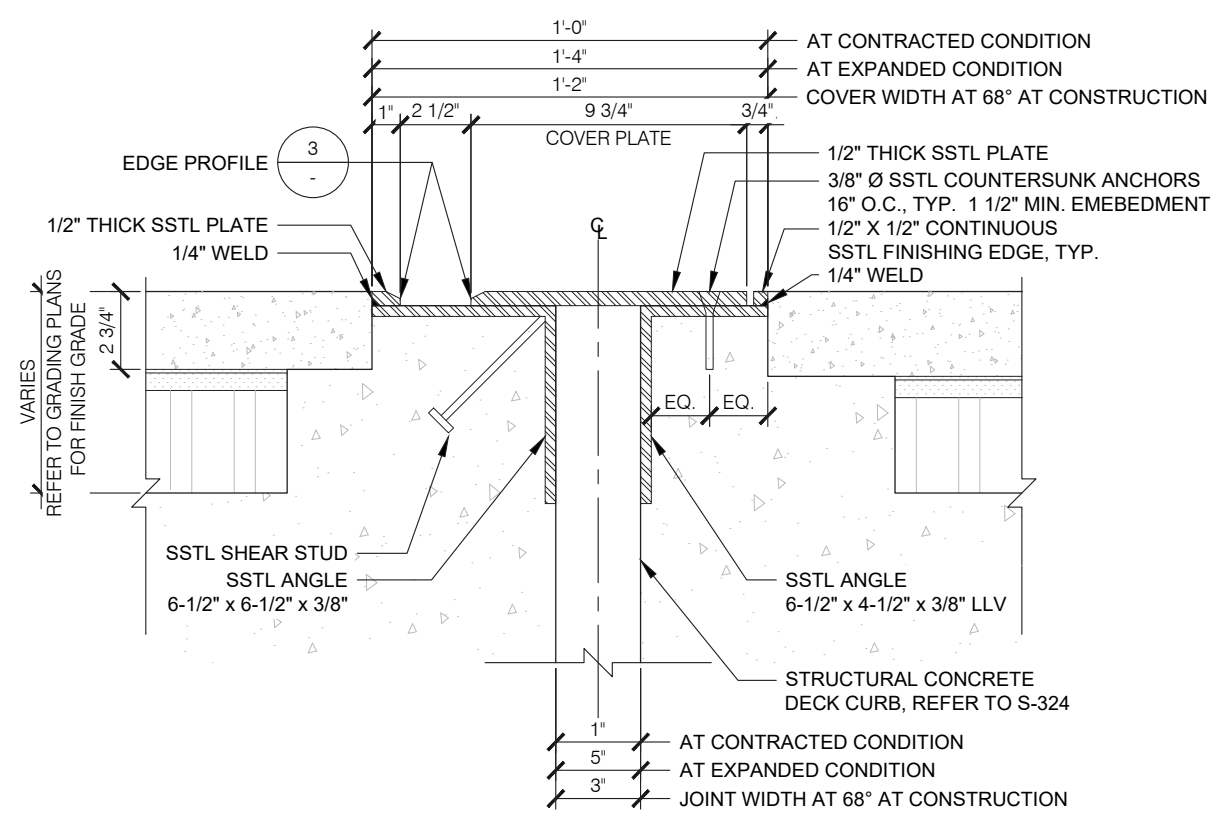




1 PLAN AND ELEVATION AT WHARF SIDE
SCALE: 1"=1'-0"



1 PLAN AND ELEVATION AT WHARF SIDE
SCALE: 1"=1'-0"



2 EXPANSION JOINT COVERS AT WHARF
SCALE: 3" = 1'-0"



Proposed Expansion Joint Cover Finish Material

MATERIAL PALETTE

SITE PAVING AND FURNISHINGS



CONCRETE HEX PAVER

Manufacturer: Unilock
Source Location: New York
Size: 8" Hex
Color: Charcoal
Finish: Revela



CONCRETE SQ PAVER

(to match existing at The View)
Manufacturer: Unilock
Source Location: New York
Size: 5"x5" and 5"x10" pavers
Color: Match existing
Finish: TBD



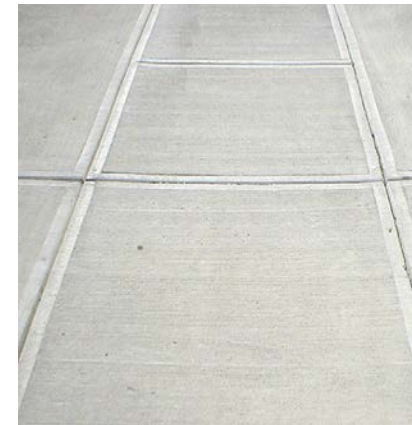
ASPHALT HEX

Manufacturer: Hanover
Source Location: Pennsylvania
Size: 8" Hex
Color: Matrix #10
Finish: Exposed Aggregate



GRANITE PAVER

Manufacturer: Coldspring
Source Location: New York
Color: Mountain Green
Finish: Textured



REINFORCED CONCRETE

Color/Finish: Unpigmented



EXPANSION JOINT COVERS

Material: Stainless Steel
Finish: Sandblast



1939 WORLD'S FAIR BACKED BENCH

Manufacturer: Kenneth Lynch & Sons
Color: Black



1939 WORLD'S FAIR BACKLESS BENCH

Manufacturer: Kenneth Lynch & Sons
Color: Black



RIVER BENCH

Manufacturer: Soheil Mosun Limited
Color: Black



RIVERSIDE LUMINAIRE ON B-POLE

Manufacturer: Sentry Lighting
Color: Black



TYPE E HI-LO DRINKING FOUNTAIN

Manufacturer: Canterbury Designs
Color: Black
* Matches existing in The Battery



DECORATIVE TRASH BINS

Manufacturer: Victor Stanley
Color: Black
* Matches existing in The Battery



SEA RAIL BOLLARD

Color/Finish: Salvaged and refinished using Black Themec coating



MAINTENANCE AND OPERATIONS FENCE

Manufacturer: Orsogril Talia
Color/Finish: Black

Thank you!