

Battery Coastal Resilience News

March 2024

www.nyc.gov/site/lmcr/progress/battery-coastal-resilience.page



Image: Aerial image of The Battery and project limits (Stantec).

Welcome to the first newsletter of the Lower Manhattan Coastal Resiliency (LMCR) - Battery Coastal Resilience Project. The project newsletter will feature background project information, deep dives into key project topics, construction updates and milestones. The newsletter will also provide information on additional ways to get in touch with the project team with any questions or feedback. Read on for the first edition below, and stay tuned for more to come!

About the Project

The Battery Coastal Resilience Project will rebuild and elevate the Battery wharf to reduce risk from future tidal flooding and low level coastal storms while maintaining the character and uses of the promenade and the rest of the park. The Battery Coastal Resilience Project is one of several projects, which together are known as the Lower Manhattan Coastal Resiliency (LMCR) Project.

The wharf, a concrete deck structure that is supported on piles, was constructed in the 1940s and is in such poor condition that it needs to be entirely replaced. The new elevated wharf will also serve to reduce the park's risk from future tidal flooding and low-level coastal storms, while maintaining the character and uses of the promenade and the rest of the park.

Project Timeline

The project will be implemented in two phases with partial wharf closures to minimize disruptions to park activity and maintain ferry services. Phase 1 is scheduled between 2024 - 2025 and will reconstruct the western portion of the wharf and adjacent areas. Phase 2 will be scheduled between 2025 - 2026 and will reconstruct the eastern portion of the wharf and adjacent areas.



Project Goals

The Battery Coastal Resilience Project will:

- Reconstruct the deteriorating wharf
- Protect The Battery from rising seas
- Accommodate passenger ferry uses
- Preserve and enhance park character and gardens
- Design for universal accessibility to create a welcoming and accessible esplanade
- Protect park’s historical & cultural resources

Addressing Climate Change

With sea levels expected to rise 6.3ft by 2100, the Battery Coastal Resilience Project will proactively elevate the Battery wharf by an additional 5ft, preparing The Battery for sea level rise over the next 80 years.

Sustainable features, such as salt-tolerant trees, enhanced drainage, and permeable pavements, are integrated into the park’s design to fortify its resilience against future challenges.

Continuation of Ferry Service

Preserving critical maritime functions has been at the forefront of planning for the project. Ferry services to the Statue of Liberty will continue *uninterrupted* throughout construction. Passenger screening and ferry docking during Phase 1 will take place at the southern end of the park. During Phase 2, screening and ferry docking will return to the area near Castle Clinton. Throughout both phases of construction, ferry service will run regularly, ensuring seamless access to New York City’s iconic attraction.



Image: Artist’s rendering of the completed raised wharf at The Battery (Stantec).

Monument Preservation

The Battery is home to various monuments, each with its unique historical significance. As part of the project, monuments within the park are being protected; when required, they will be rehabilitated and restored. This ensures that the park's rich historical legacy is preserved for future generations. See page 4 for listing of monuments that will be inaccessible during construction.

Park Access

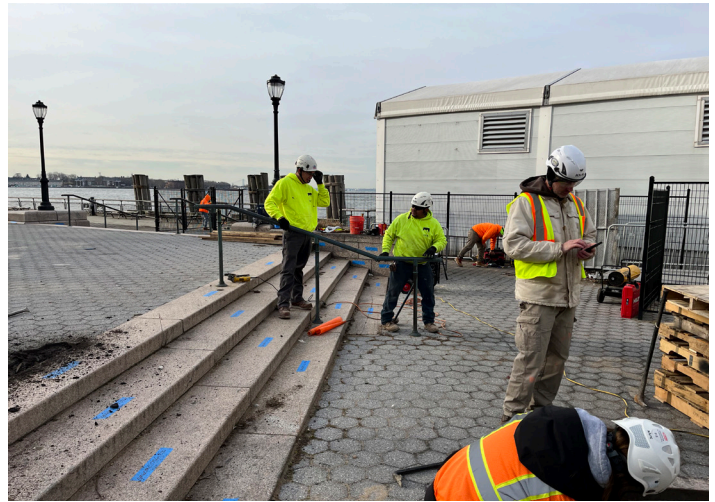
Much of the park remains open throughout construction. Construction logistics have been organized to minimize disruption to park visitors. Some entry points into the park have been closed off to accommodate construction activities, but the public can still enter the park along State Street, just outside the Bowling Green Subway Station and just outside the Playscape playground. See page 4 for listing of park features that remain open to the public.

Community Engagement

A key aspect of the Battery Coast Resilience Project has been the active engagement of the community. The Battery Conservancy, a non-profit partner of NYC Parks, has played a pivotal role in providing guidance on design, materials, and planting. Regular updates to Manhattan Community Board 1, and wide distribution of construction notices ensure that local stakeholders are informed and involved in ongoing developments.

Moving forward, the newsletter will also play a key role in keeping interested stakeholders up-to-date on the project. Make sure you are subscribed to stay in the loop on this exciting and critical resilience project!

We encourage you to visit the project website to learn more about the Battery Coastal Resilience project's plans, design, and construction schedule.



Images: Demolition and salvage efforts at the site during the construction phase (Project team).

Questions?

Reach out to the **Community Construction Liaison (CCL)** for project related queries or concerns:

Battery Coastal Resilience CCL:
Leah Yudin, at 347-640-4737 or
info@batterycoastalresilience.com

Construction Updates

Summary of Upcoming Work

- Mobilization of marine construction equipment including cranes and excavation machinery mounted on barges, marine support barges, and tug boats.
- Demolition of the Battery Wharf from East Coast Memorial to Pier A in preparation for reconstruction.
- Start of Sheet Pile Installation in tandem with demolition.

Expected Start Date:

03/2024 - 09/2024 (~6 month duration)

Map of Open and Closed Park Areas and Access Points



Features that remain open:

- Playscape
- SeaGlass Carousel
- Bikeway
- Battery Woodland
- Urban Farm
- Bosque Foundatain
- Castle Clinton
- Statue of Liberty Ferry
- Portions of the Oval Lawn (including off-lease dog area)
- Food Kiosks/Restaurant
- Restrooms (3)

Features that are closed:

- Battery Wharf
- Gardens of Remembrance
- Portions of the Oval Lawn

Monuments that are inaccessible:

- Admiral George Dewey Memorial
- American Merchant Mariners Memorial
- Emma Lazarus Memorial Plaque
- Korean War Veterans Monument
- Netherlands Memorial Flagpole
- Norwegian Veterans Memorial
- Peter Caesar Alberti Marker
- River That Flows Two Ways
- The Immigrants
- Walloon Settlers Memorial