

Battery Coastal Resilience News

June 2024

www.nyc.gov/site/lmcr/progress/battery-coastal-resilience.page



Image: Aerial image of The Battery (photo taken by The Battery Conservancy).

Project News

Welcome to Project Newsletter #2! We are excited to share news and updates about the Battery Coastal Resilience Project. This newsletter will provide an overview of an exciting groundbreaking ceremony with Mayor Adams and other city agencies, an award announcement recognizing project sustainability achievements, and the latest on construction progress. Read on to find out more!

Project Timeline



About the Project

The Battery Coastal Resilience Project will rebuild and elevate The Battery wharf to reduce risk from future tidal flooding and low level coastal storms while maintaining the character and uses of the promenade and the rest of the park. The Battery Coastal Resilience Project is one of several projects, together known as the Lower Manhattan Coastal Resiliency (LMCR) Project.

Groundbreaking Ceremony with Mayor Adams

On May 6, 2024, Mayor Adams joined NYCEDC, NYC Parks, and NYC Mayor's Office of Climate and Environmental Justice (MOCEJ) to officially break ground on the Battery Coastal Resilience Project. Mayor Adams also called on the federal government to establish an ongoing fund for coastal infrastructure to support New York City in completing critical resiliency projects like this one. The Mayor highlighted the incredible return on investment anticipated from coastal infrastructure projects, noting that for every \$1 invested, \$6 is saved in recovery costs.



Image (Left to Right): Laurian Farrell (NYCDEP), Eric Macfarlane (DDC), Tammy Meltzer (CB1 Chairperson), Jimmy Cleckley (National Park Service), Commissioner Sue Donoghue (NYC Parks), Congressman Dan Goldman, Commissioner Rohit Aggarwala (DEP), Mayor Eric Adams, Alison Landry (NYC Mayor's Office), Joshua Kraus (EDC), President Raju Mann (BPCA), and Executive Director Elijah Hutchinson (MOCEJ).

Battery Coastal Resilience Project Receives Sustainability Award

The Battery Coastal Resilience Project is the first construction project in Manhattan to receive an Envision Platinum Award through the Institute for Sustainable Infrastructure Envision Program. This award recognizes infrastructure projects that prioritize sustainable practices to address climate change challenges.

Sustainability Achievements

Using the Envision framework, the Battery Coastal Resilience Project achieved success across a range of measures, including:

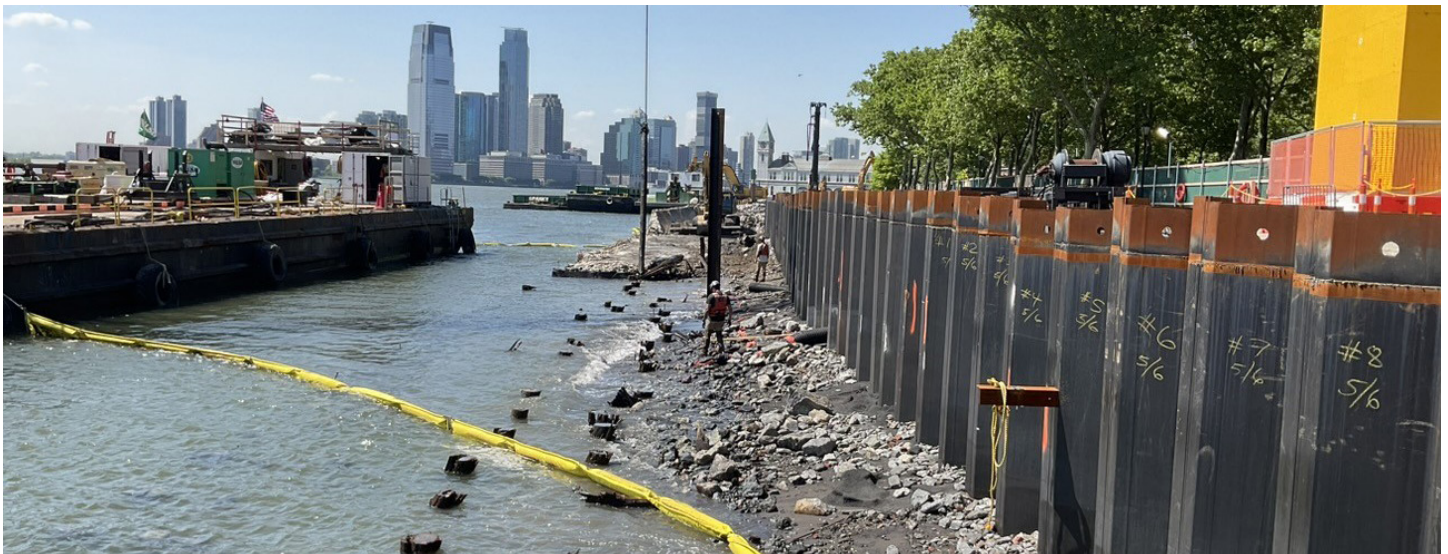
- Addressing Climate Change Vulnerability
- Utilizing Climate Adaptive Design Measures
- A 54% Reduction in Embodied Carbon, the Highest Reduction in Program History
- Employing Sustainable Construction Materials and Practices
- Enhancing Public Space and Restoring Artwork

Sustainability Planning and Design

The Battery Park Coastal Resilience Project received high levels of achievement for its commitment to resilient design measures and utilization of climate vulnerability assessments. The project was recognized for its commitment to achieving an estimated 54% reduction in carbon emissions, which will be met through less emissions-intensive transportation and reuse of onsite construction materials. This included an initiative to not only prioritize use of recycled materials, but also to recycle 75% of the project's construction waste for use in future projects. Lastly, the project team developed a comprehensive plan to ensure that park resources like public seating, trees, and gardens will be preserved and revitalized. For additional information on this award, visit the Institute for Sustainable Infrastructure's website: <https://sustainableinfrastructure.org/project-awards/lower-manhattan-coastal-resiliency-the-battery/>

Construction Progress

Substantial progress has been made on installation of sheet piles at the site. These vertical metal sheets act as a temporary shoreline during the construction and become incorporated to the new wharf as part of the new resilient wharf structure. Construction teams have also demolished the existing dilapidated platform and timber structures and driven precast concrete piles into the ground. This creates the foundation for the precast concrete platform that will comprise the new wharf.



Questions?

Reach out to the **Community Construction Liaison (CCL)** for project related queries:

Battery Coastal Resilience CCL:
Leah Yudin, at 347-640-4737 or
info@batterycoastalresilience.com

Construction Updates

Summary of Upcoming Work

- Continued demolition, excavation, and sheet pile installation along the Battery Wharf from the East Coast Memorial to Pier A.
- Continued marine activity including crane mounted barge mobilizations and material supply deliveries via barge.
- Start of pile driving activities to install structural foundations for the reconstructed wharf working from the East Coast Memorial towards Pier A from barge mounted cranes.
- Test Pile Program to verify pile capacities and start of aquatic habitat monitoring.

Expected Start Date:

05/20/2024 - 11/30/2024 (~7 months duration)

Map of Open and Closed Park Areas and Access Points



Features that remain open:

- Playscape
- SeaGlass Carousel
- Bikeway
- Battery Woodland
- Urban Farm
- Bosque Fountain
- Castle Clinton
- Statue of Liberty Ferry
- Portions of the Oval Lawn
- Food Kiosks/Restaurant
- Restrooms (3)

Features that are closed:

- Battery Wharf
- Gardens of Remembrance
- Portions of the Oval Lawn

Monuments that are inaccessible:

- Admiral George Dewey Memorial
- American Merchant Mariners Memorial
- Emma Lazarus Memorial Plaque
- Korean War Veterans Monument
- Netherlands Memorial Flagpole
- Norwegian Veterans Memorial
- Peter Caesar Alberti Marker
- River That Flows Two Ways
- The Immigrants
- Walloon Settlers Memorial