

# Battery Coastal Resilience News

September 2024

[www.nyc.gov/site/lmcr/progress/battery-coastal-resilience.page](http://www.nyc.gov/site/lmcr/progress/battery-coastal-resilience.page)

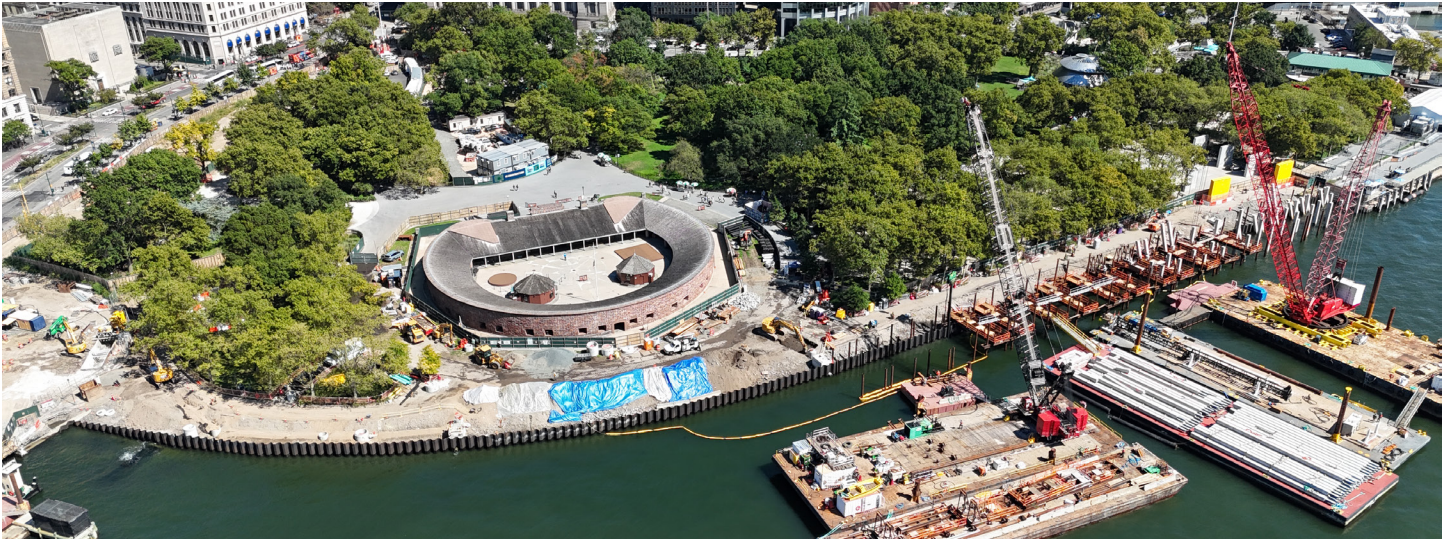


Image: Aerial image of The Battery (photo taken by The Battery Conservancy).

## Project News

Welcome to Project Newsletter #3! We are excited to share news and updates about the Battery Coastal Resilience Project. This newsletter will provide an **overview of material reuse, the latest on construction progress, and summary of upcoming construction work.** Read on to find out more!

## Project Timeline



## About the Project

The Battery Coastal Resilience Project will rebuild and elevate The Battery wharf to reduce risk from future tidal flooding and low-level coastal storms while maintaining the character and uses of the promenade and the rest of the park. The Battery Coastal Resilience Project is one of several projects, together known as the Lower Manhattan Coastal Resiliency (LMCR) Project.



## Material Reuse

The Battery Coastal Resilience Project is focused on salvaging and reusing materials from the now deconstructed wharf. The salvage and reuse of these materials represent one of the core goals of the project: to recycle and integrate the historic character of these materials back into the new project design and development of the Battery waterfront. The project team coordinated with The Battery Conservancy to reclaim the wharf's historic stony creek granite for reuse. These granite elements were carefully removed, preserved, cleaned and repaired and will be re-installed as part of the new wharf design. The project team has also salvaged, preserved, cleaned, sanded and oiled over 900 linear feet of tropical hardwood searail for future project reuse and re-installation. The Battery Coastal Resilience Project received an Envision Platinum award earlier this year due to proactive efforts like these as well as employing other sustainable and creative measures during the design and construction of this resiliency project.



*Image: Preserved stony creek granite as seen on a project site visit.*



*Image: The project team salvaged and cleaned granite elements for project reuse.*



*Image from right to left: Tropical hardwood searail undergoes several phases of refurbishment (salvage, cleaning/sanding, and oiling) until it is ready for re-installation.*



## Construction Progress

Substantial progress has been made on the installation of the precast concrete piles. These piles act as the foundation for the precast concrete platform structure of the new wharf. By the end of Phase 1, 188 piles between 45 and 70 feet long will be driven into bedrock ranging from 40 to 65 feet deep. Construction teams have also begun installation of drainage structures adjacent to and upland from the wharf. These structures serve to collect and manage excess rainwater to prevent flooding, protect surrounding infrastructure, and enhance flood resiliency at the Battery.



*Image: Aerial view of precast concrete pile installation setup and material staging on barges.*



*Image: Aerial view of upland drainage structures and storm water retention improvements adjacent to future wharf structure.*

### Questions?

Reach out to the **Community Construction Liaison (CCL)**

for project related queries:

**Battery Coastal Resilience CCL:**

Kyle Beyer, at 347-313-8375 or

[info@batterycoastalresilience.com](mailto:info@batterycoastalresilience.com)



# Construction Updates

## Summary of Upcoming Work

- Continued land-side excavations, drainage, and civil infrastructure improvements. Export of recyclable concrete, asphalt, and fill materials via barge.
- Continued marine activity including crane mounted barge mobilizations and material supply deliveries via barge.
- Continued pile driving activities to install structural foundations for the reconstructed wharf working from the East Coast Memorial towards Pier A from barge mounted cranes.

Expected Start Date:

**08/15/2024 - 12/31/2024** (~4 months duration)

## Map of Open and Closed Park Areas and Access Points



### Features that remain open:

- Playscape
- SeaGlass Carousel
- Bikeway
- Battery Woodland
- Urban Farm
- Bosque Fountain
- Castle Clinton
- Statue of Liberty Ferry
- Portions of the Oval Lawn
- Food Kiosks/Restaurant
- Restrooms (3)

### Features that are closed:

- Battery Wharf
- Gardens of Remembrance
- Portions of the Oval Lawn

### Monuments that are inaccessible:

- Admiral George Dewey Memorial
- American Merchant Mariners Memorial
- Emma Lazarus Memorial Plaque
- Korean War Veterans Monument
- Netherlands Memorial Flagpole
- Norwegian Veterans Memorial
- Peter Caesar Alberti Marker
- River That Flows Two Ways
- The Immigrants
- Walloon Settlers Memorial