

Battery Coastal Resilience News

December 2024

www.nyc.gov/site/lmcr/progress/battery-coastal-resilience.page



Image: Aerial image of The Battery (photo taken by The Battery Conservancy)

Project News

Welcome to Project Newsletter #4! We are excited to share news and updates about the Battery Coastal Resilience Project. This newsletter will provide an **overview of material reuse, the latest on construction progress, and summary of upcoming construction work**. Read on to find out more!

Project Timeline



About the Project

The Battery Coastal Resilience Project will rebuild and elevate The Battery wharf to reduce risk from future tidal flooding and low-level coastal storms while maintaining the character and uses of the promenade and the rest of the park. The Battery Coastal Resilience Project is one of several projects, together known as the Lower Manhattan Coastal Resiliency (LMCR) Project. The project is currently in Construction Phase 1, which is expected to transition to Construction Phase 2 in Summer 2025.

Mock-Ups

The Battery Coastal Resilience Project Team has been working diligently to prioritize the aesthetics of the landscape features, either salvaged or newly fabricated. To ensure the highest quality possible, the Team has developed samples of these features, referred to as mock-ups, to work through details prior to constructing the final product. Recently, the Team reviewed and approved mock-ups for the fascia stone, the granite benchwalls, and the sea rail, as pictured below.



Image: Wharf Lower Fascia



Image: Wharf Upper Fascia using Salvaged Stone



Image: Granite Back Bench Wall using Salvaged Stony Creek Granite



Image: Sea Rail Mockup with Restored River that Flows Two Ways Art Panel

Ongoing Public Engagement

The Battery Coastal Resilience Project Team recently presented at the Community Board 1 (CB1) Environmental Protection Committee Meeting on November 18th. The Team provided updates to CB1 about project and construction progress, landscape features and mock-ups (mentioned above), and pertinent information for CB1 residents to stay engaged as the end of Phase 1 approaches.

Construction Progress

Significant progress has been made on the installation of the precast concrete piles. To accelerate the project schedule, the Team worked a swing shift, where they cut installed concrete piles to their final elevation. Moreover, the Team is nearly complete with the installation of drainage structures, as well as the corresponding excavations and grading. To achieve this feat, a substantial amount of imported fill had to be delivered to the project via barge. Additionally, the landscape features are beginning to come to life, as the team has begun to set rebar and pour concrete. This concrete will serve as the foundation for the granite walls and benches that future park visitors will enjoy. The construction process overall will radically transform the shoreline for years to come.

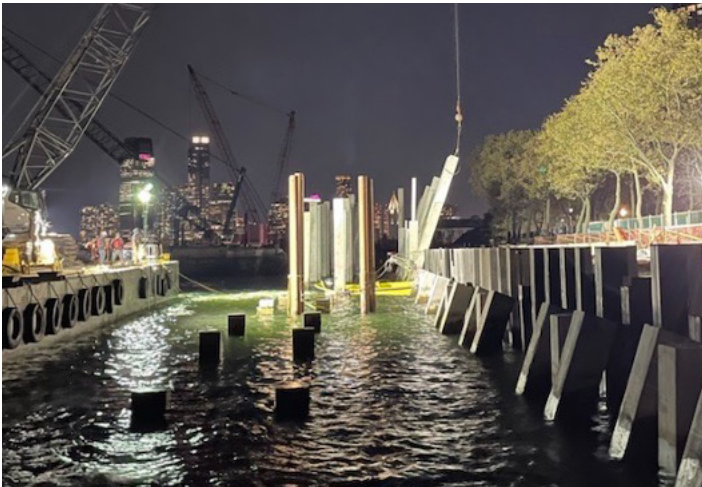


Image: Cutting of Piles to Grade (Night Shift)



Image: Pile Driving



Image: Storm Drainage Backfill and Compaction



Image: Concrete Retaining Wall Installation to be Clad with Salvaged Granite

Questions?

Reach out to the **Community Construction Liaison (CCL)**

for project related queries:

Battery Coastal Resilience CCL:

Kyle Beyer, at 347-313-8375 or

info@batterycoastalresilience.com

Construction Updates

Summary of Upcoming Work

- Continued land-side excavations, drainage, and civil infrastructure improvements. Export of recyclable concrete, asphalt, and fill materials via barge.
- Continued marine activity including crane mounted barge mobilizations and material supply deliveries via barge.
- Continued pile driving activities to install structural foundations for the reconstructed wharf working from the East Coast Memorial towards Pier A from barge-mounted cranes.

Expected Start Date:

012/31/2024 - 3/31/2025 (~4 months duration)

Map of Open and Closed Park Areas and Access Points



Features that remain open:

- Playscape
- SeaGlass Carousel
- Bikeway
- Battery Woodland
- Urban Farm
- Bosque Fountain
- Castle Clinton
- Statue of Liberty Ferry
- Portions of the Oval Lawn
- Food Kiosks/Restaurant
- Restrooms (3)

Features that are closed:

- Battery Wharf
- Gardens of Remembrance
- Portions of the Oval Lawn

Monuments that are inaccessible:

- Admiral George Dewey Memorial
- American Merchant Mariners Memorial
- Emma Lazarus Memorial Plaque
- Korean War Veterans Monument
- Netherlands Memorial Flagpole
- Norwegian Veterans Memorial
- Peter Caesar Alberti Marker
- River That Flows Two Ways
- The Immigrants
- Walloon Settlers Memorial