



Reconstruction of Tennis House

Located East of Prospect Park West, at Elongation of 8th Street, near Brooklyn Maintenance Yard, within Prospect Park, Borough of Brooklyn

Prospect Park Alliance
Landmarks Preservation Commission Public Hearing
August 13, 2019

Total Budget: \$5.635M

- The Brooklyn Delegation \$2.5M
- Mayor Bill De Blasio \$2.635M
- New York State Office of Parks, Recreation and Historic Preservation (OPHRP) Environmental Protection Fund Grant Program for Parks, Preservation and Heritage \$0.5M

Project Size: 0.7 ac

Docket Number: LPC-20-00557

Project Goals

Re-establish the Tennis House as a public amenity for users of Prospect Park's Long Meadow. Sitework will include:

- Separating pedestrian path and vehicular access drive
- Adding gates to the existing steel fence
- Restoring pavements around the building
- Replacing lightpoles around the building
- Removing a modern shed from the site



Prospect
Park
Alliance





Project Site



Prospect Park Tennis House | Location

Scale: NTS



--- TENNIS HOUSE LOCATION



Prospect
Park
Alliance

Prospect Park Tennis House | Location

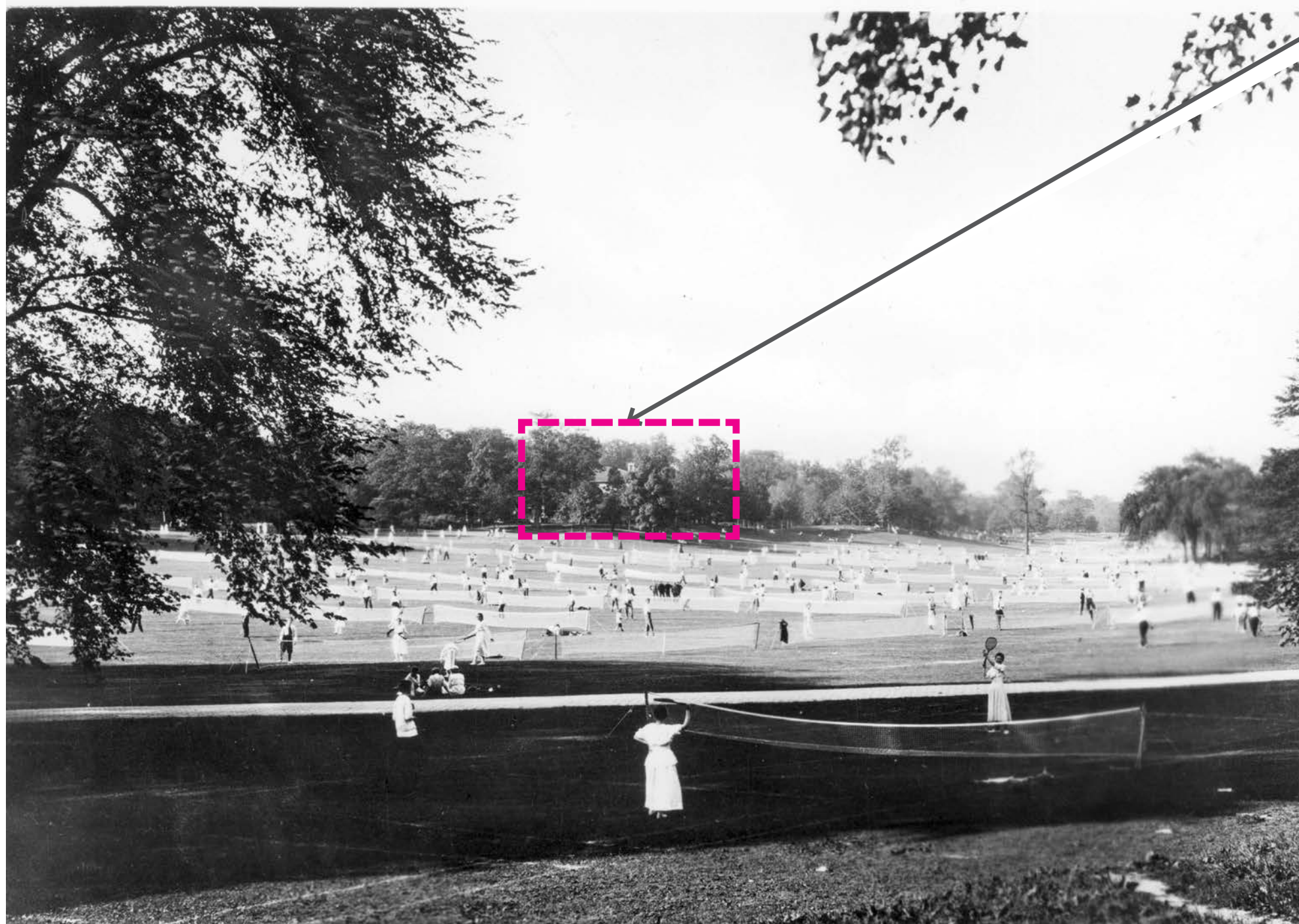




1874 Plan of Prospect Park

— — — — — **TENNIS HOUSE LOCATION**





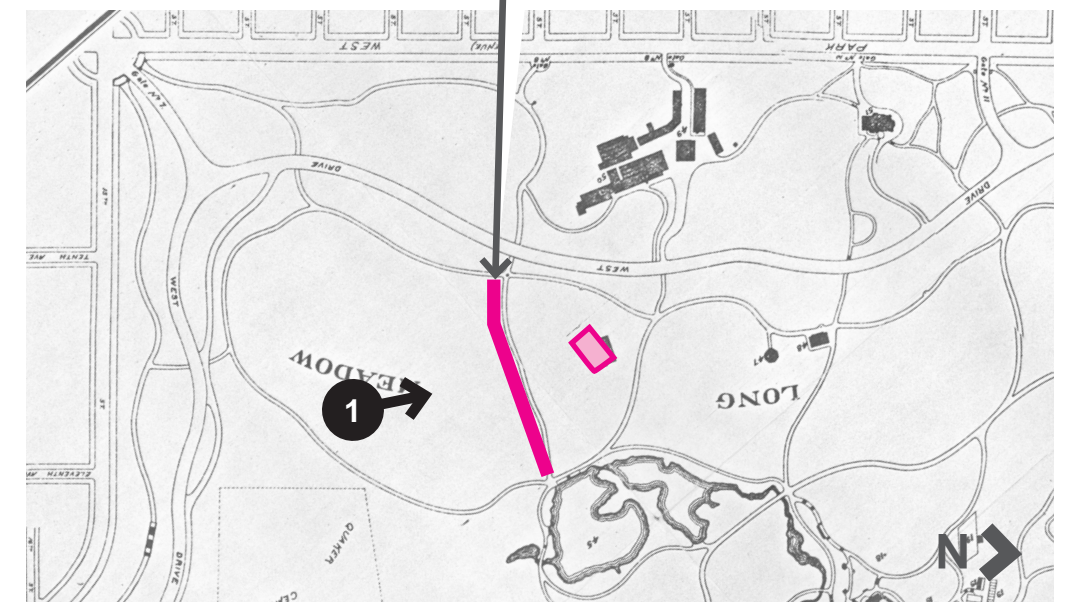
1914 Long Meadow With Lawn Tennis Players

Tennis House Behind Trees

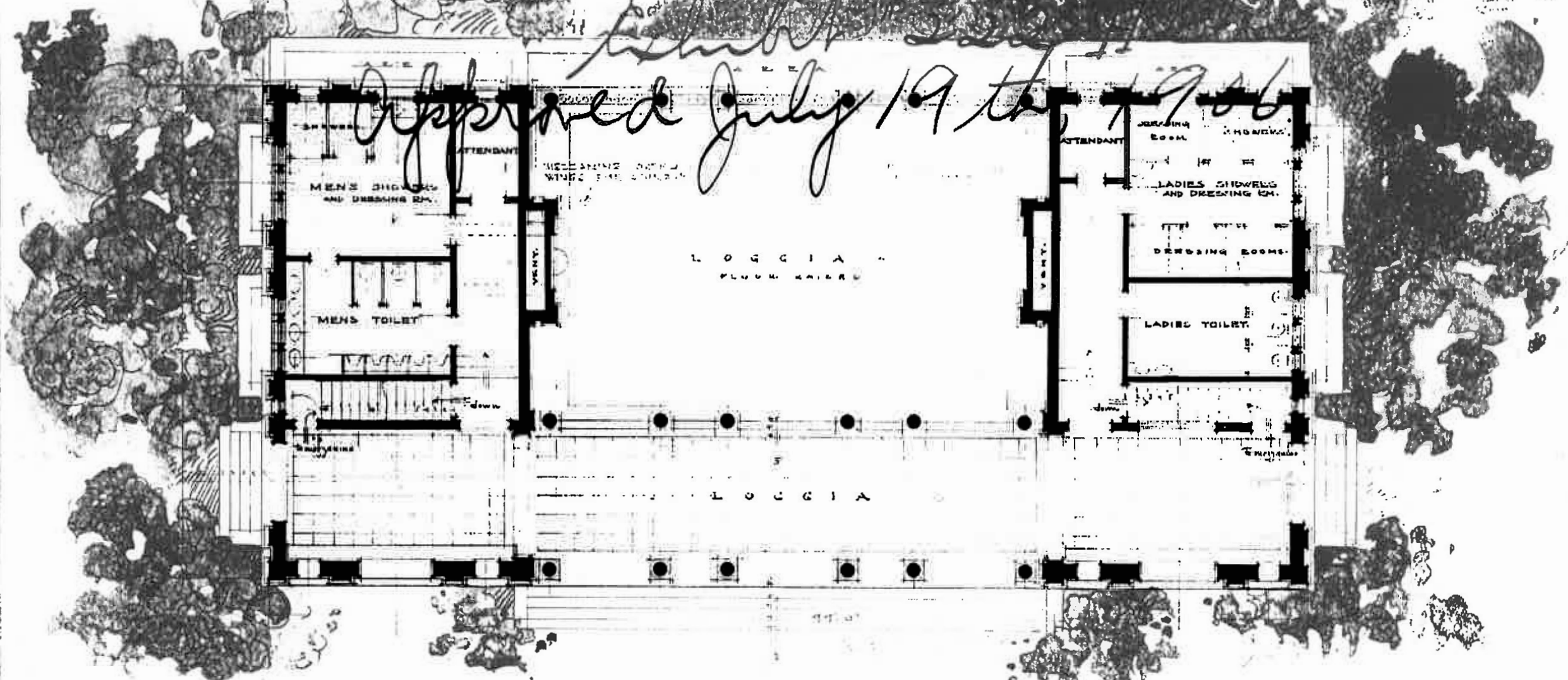
Tennis House was sited to be visually unobtrusive and nearly invisible from the Long Meadow's major sightline from the North

1909 - New Paths

Prior to construction of the Tennis House, new paths were added to accommodate flow of people across Long Meadow



Tennis House & Shelter Prospect Park



PLAN OF FIRST FLOOR

DEPARTMENT OF PARKS
 BOROUGHS OF BROOKLYN AND QUEENS
 HON. MICHAEL J. KENNEDY
 COMMISSIONER

PROSPECT PARK
 COMFORT STATION AND SHELTER

HELMLE AND HUBERTY
 ARCHITECTS
 SCALE = 8 FEET EQUALS 1 INCH

Design submitted to the Art Commission in 1906



Prospect
 Park
 Alliance

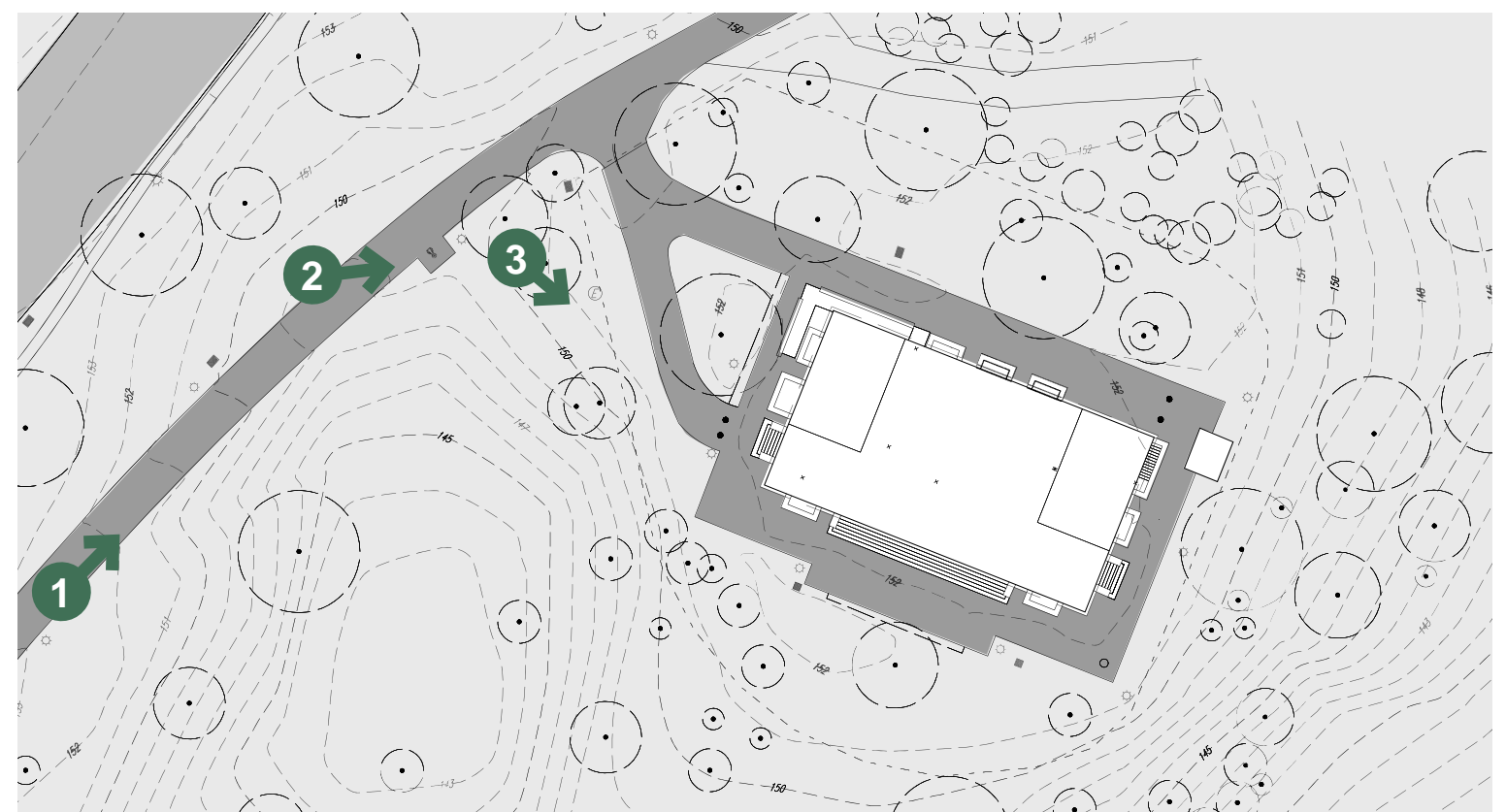
Tennis House and Shelter, Prospect Park
Exhibit "222 F"

Approved July 19th, 1906

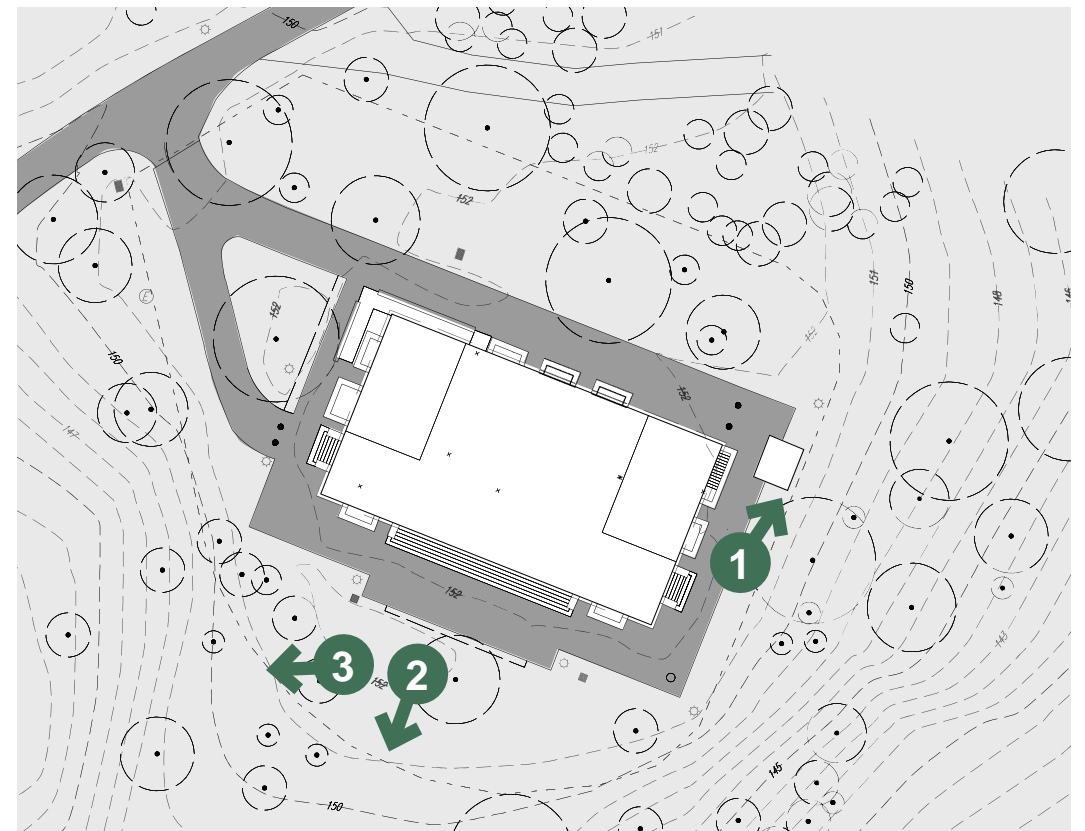


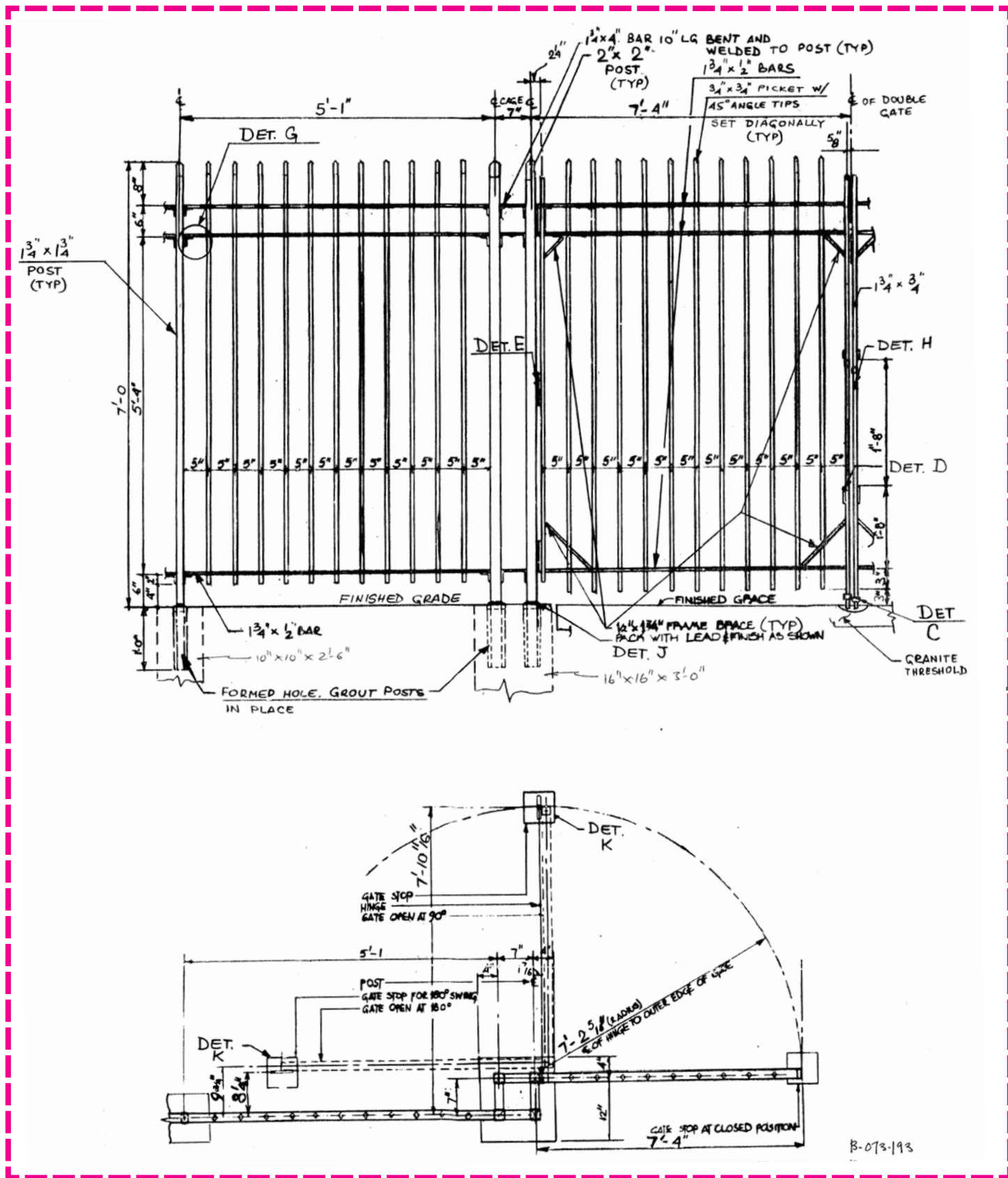
Design submitted to the Art Commission in 1906



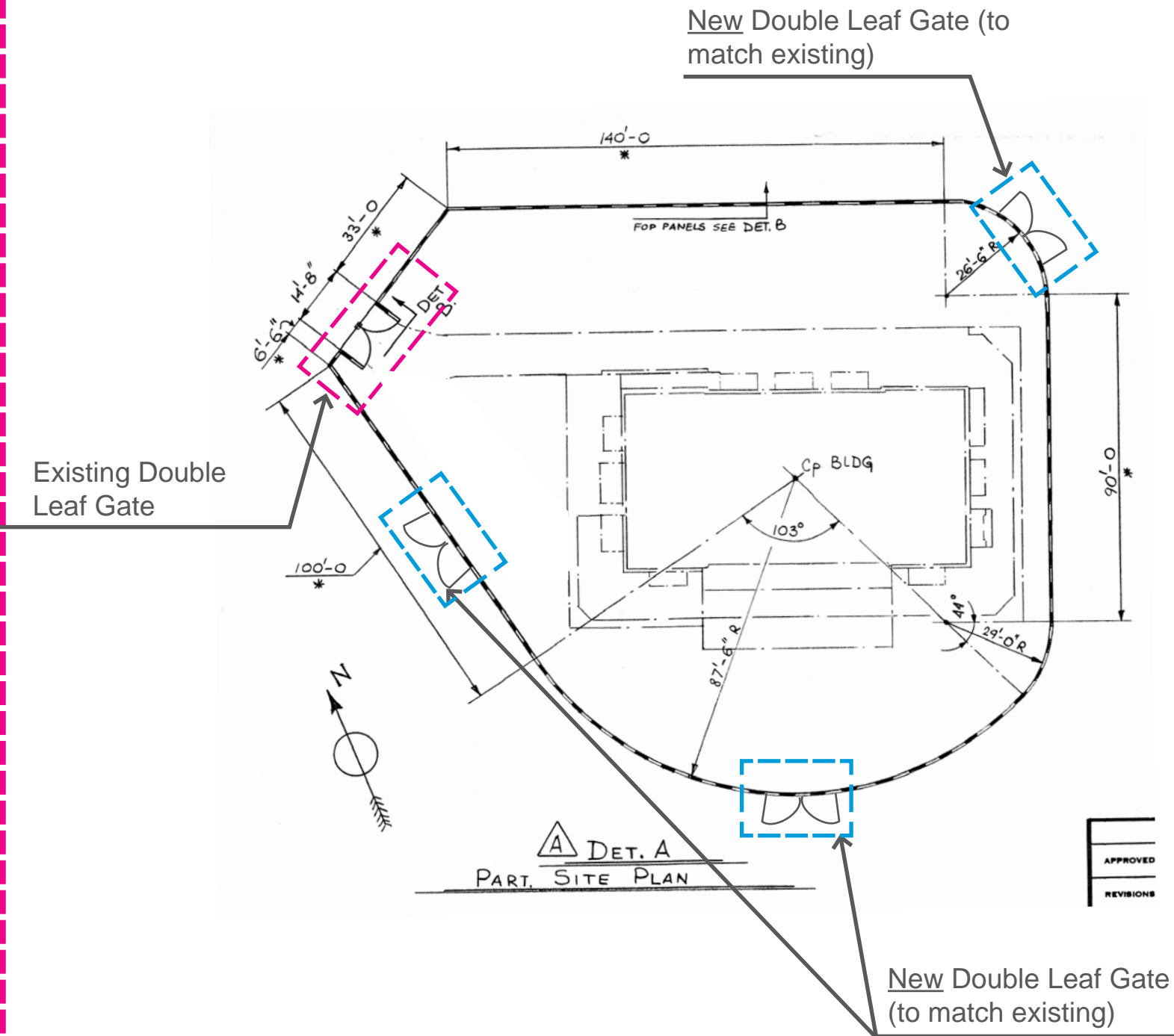








Existing Fence and Gate Detail



Proposed Fence Plan

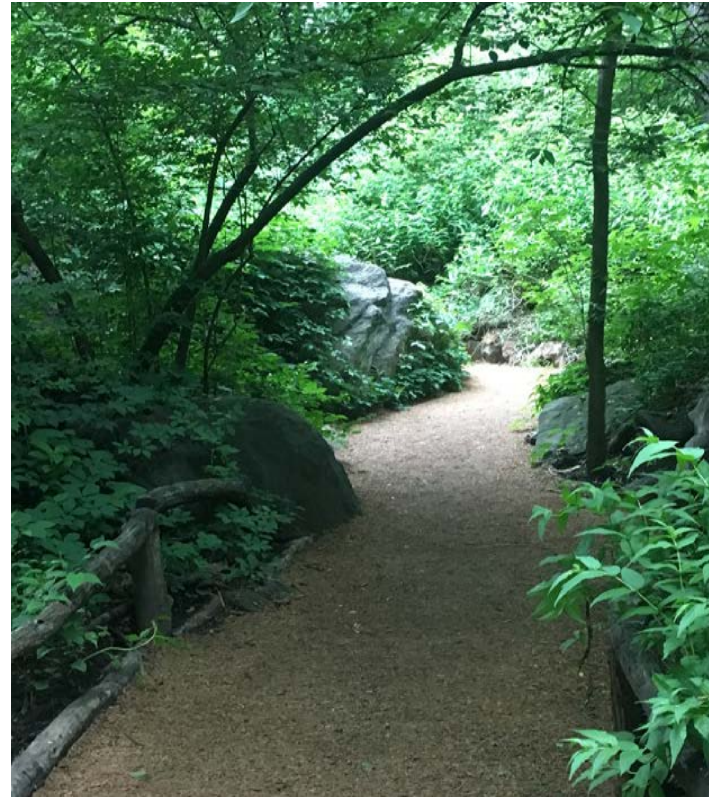


Prospect
Park
Alliance

Prospect Park Tennis House | View of the Proposed New Path



B9 Light Luminaire & Pole



Bonded Wood Carpet



Asphalt Hex Block Paving



Asphalt Paving



Locally Sourced Granite Boulders





Pinus strobus / White Pine



Ilex opaca / American Holly



Amelanchier canadensis / Serviceberry



Hydrangea quercifolia/ Oakleaf Hydrangea



Hamamelis vernalis 'Amethyst' / Spring Blooming Witchhazel



Magnolia virginiana / Sweetbay Magnolia