

The current proposal is:

Preservation Department – Item 5, LPC-24-00959

**301 Park Avenue – Waldorf-Astoria Hotel – Individual and
Interior Landmark
Borough of Manhattan**

Note: this is a Public Meeting item. No public testimony will be received today as the hearing on this item is closed

WALDORF ASTORIA BALLROOM GUARDRAILS

Architects: Schultze & Weaver

Construction Completed: 1931

Exterior Landmark Designation: 1993

Interior Landmark Designation: 2017

Landmarks Preservation Commission Public Meeting

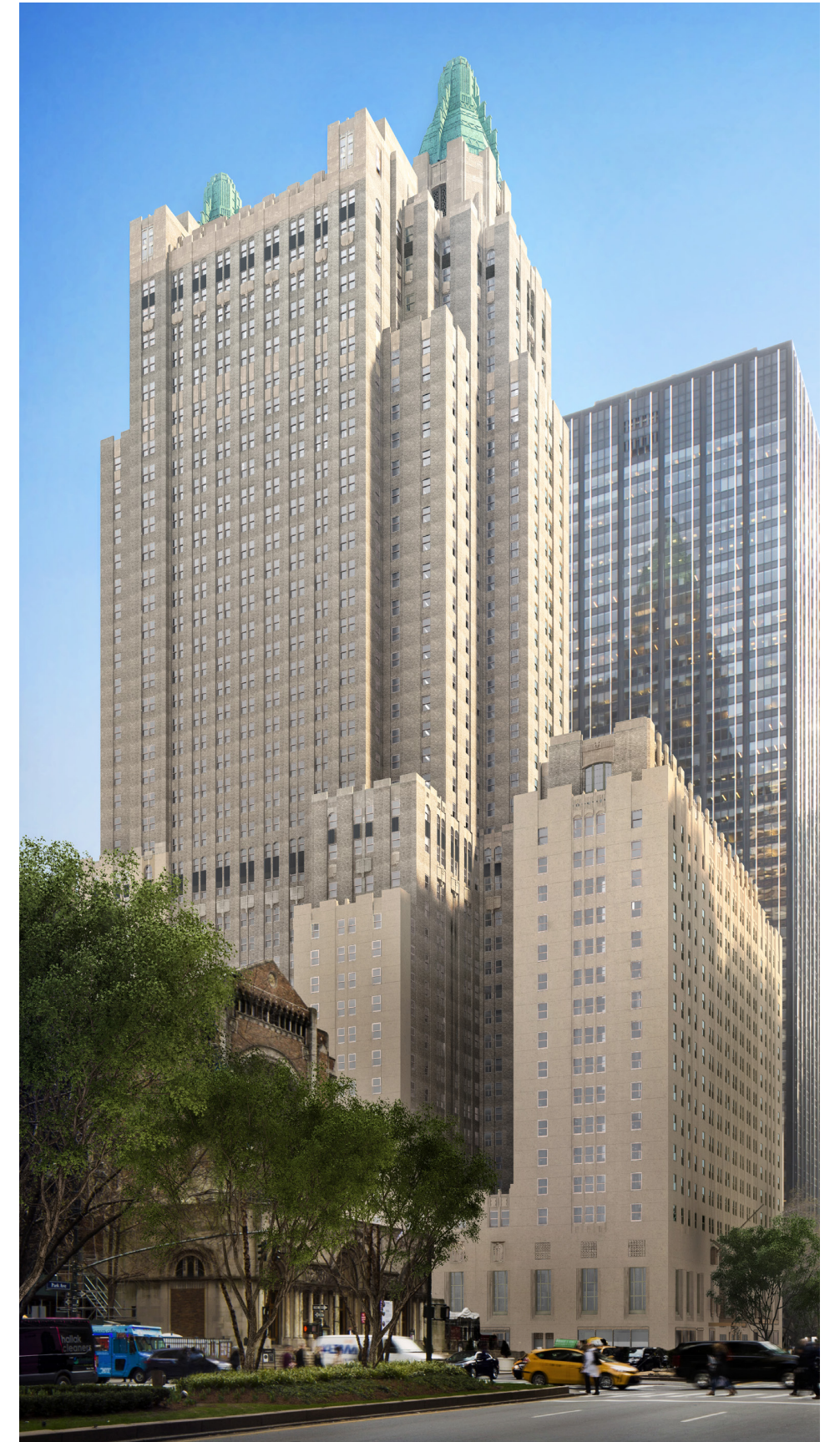
August 15, 2023

Dajia US Group

SOM



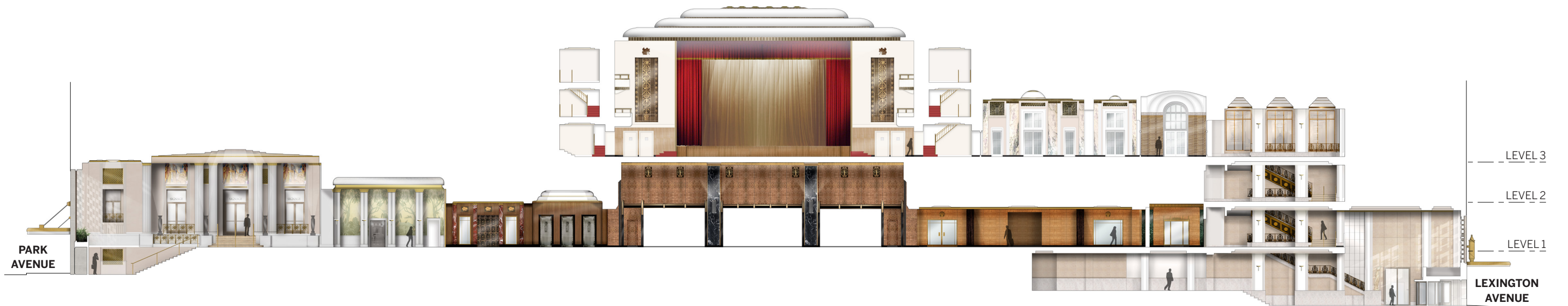
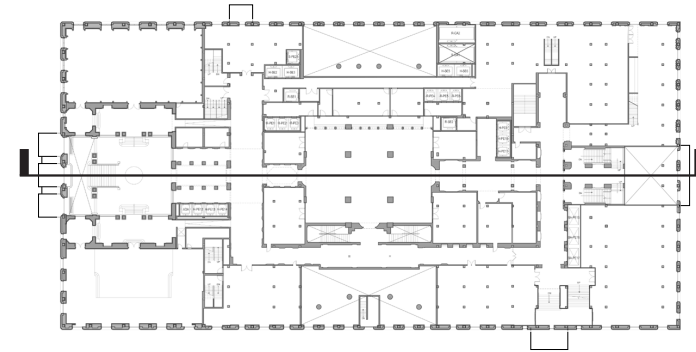
- Window and Terrace Door Restoration and Replacement to Match Historic
- Facade Cleaning, Masonry Repairs and Decorative Metal Spandrel Restoration
- Porte Cochere Restoration
- Marquees Restoration
- New Park Avenue Residential Entrance and Marquee
- Storefronts and Doors Restoration and Reconfiguration
- Pinnacle Restoration and Adaptive Reuse
- Cooling Tower Relocation
- Window Enlargements and New Window Locations
- New Rooftop Additions and Mechanical Bulkheads
- New Loading Dock
- Integrated Mechanical Systems



Restoration and Design Interventions within:

- Park Avenue Foyer
- Colonnade
- Peacock Alley
- West Elevator Hall
- Main Lobby
- Main Lobby Hall
- East Arcade
- Lexington Avenue Entry and Stair Hall
- Jade Room
- Astor Gallery
- Basildon Room
- Silver Corridor
- Ballroom Foyer
- Grand Ballroom

KEY PLAN - Level 1



ORIGINAL CONDITION

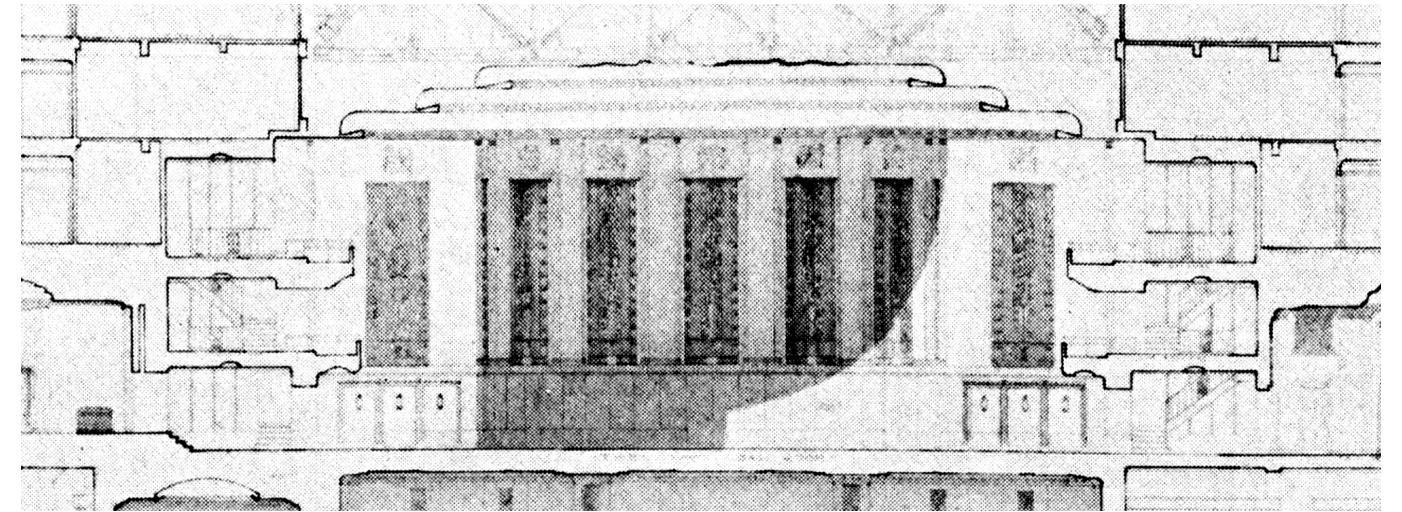
- “The general lighting scheme is indirect, from the ceiling”
 - Facts about the Waldorf

“This chandelier-less scheme enhanced the room’s exceptional height and breadth...”

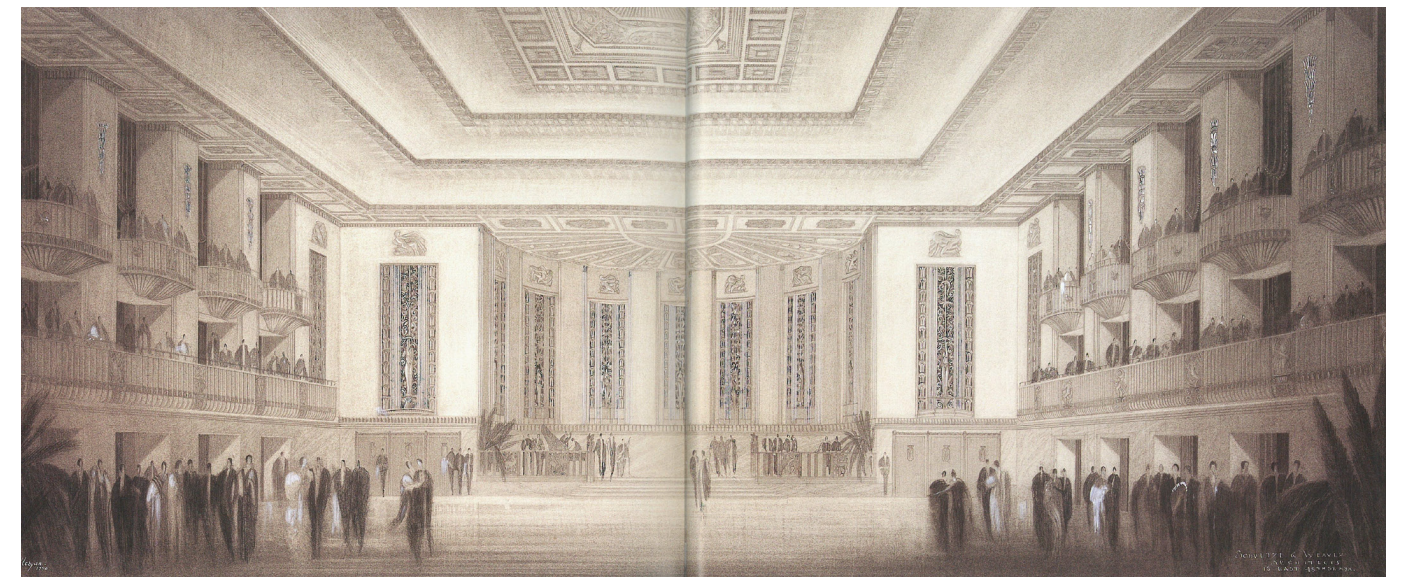
- Waldorf-Astoria Hotel Interiors Designation Report, LPC 2017



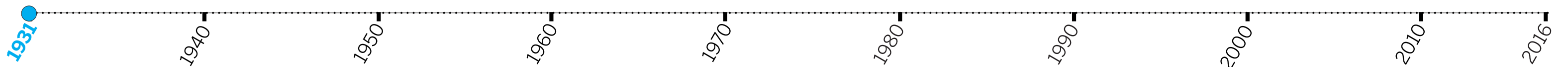
VIEW TOWARDS STAGE



EAST/WEST SECTION

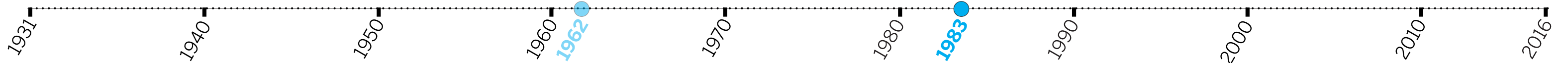


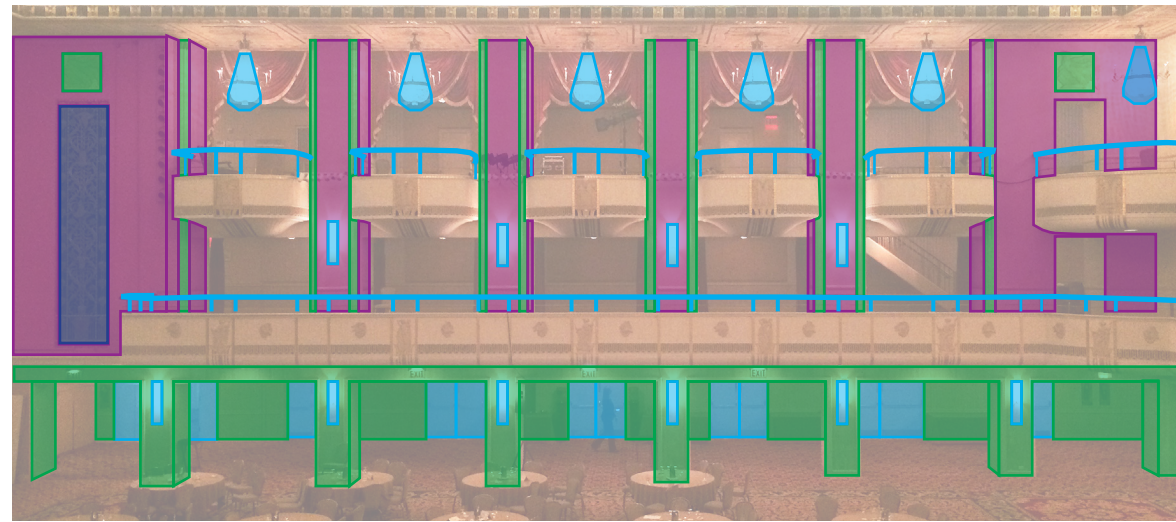
ORIGINAL SCHULTZE & WEAVER RENDERING



MAJOR RENOVATION

- All finishes replaced
- Proscenium replaced

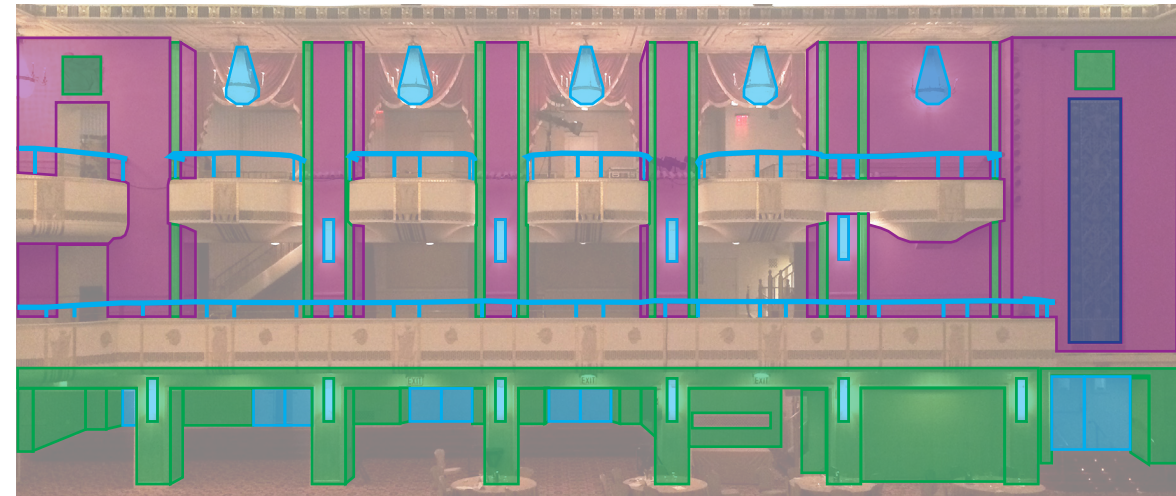




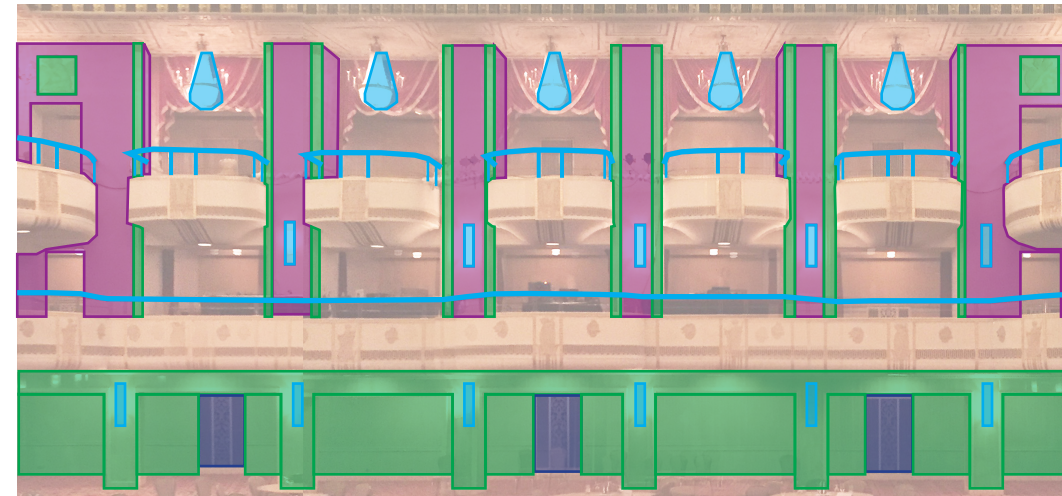
EAST ELEVATION



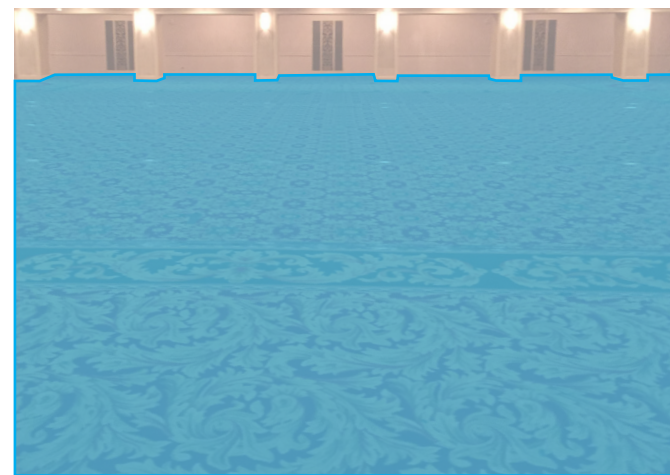
NORTH ELEVATION



WEST ELEVATION



SOUTH ELEVATION



FLOOR



CEILING

LEGEND

- Restore to original material
- Restore to original color (paint)
- Preservative measures & repairs
- Update required (new material)

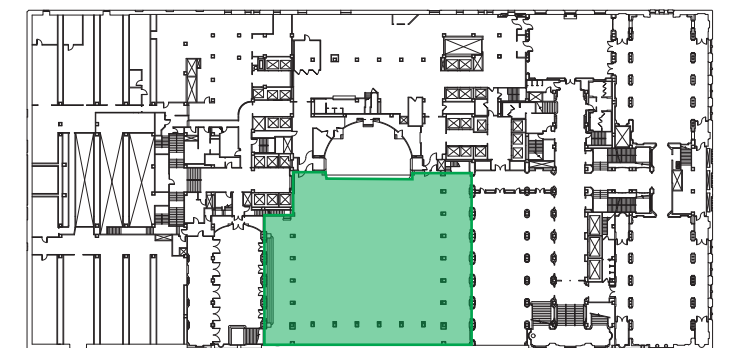
EXISTING TO REMAIN

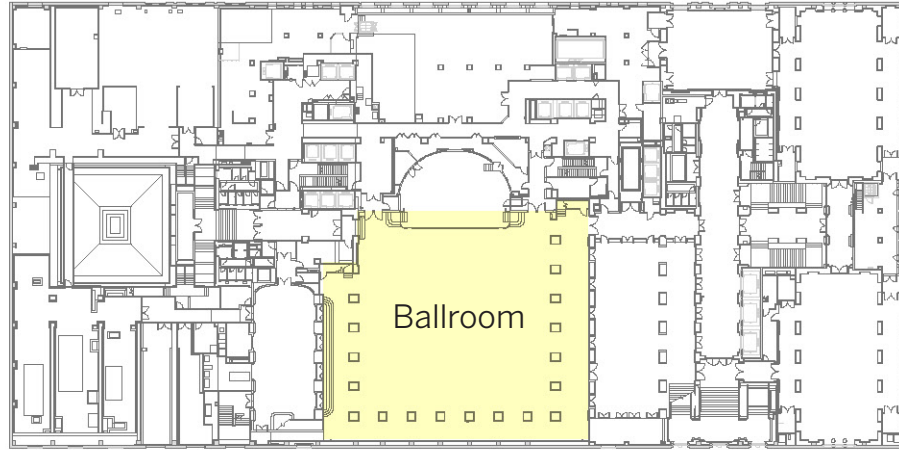
- Decorative plasterwork (at balconies)
- Decorative metalwork (stair railings, grilles)

RESTORATION SCOPE

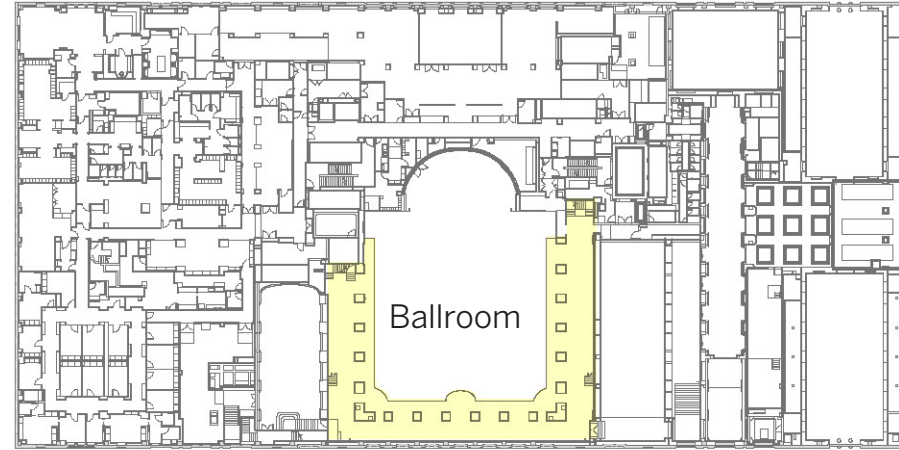
- Replace and update **lighting** (new ceiling)
- Restore **bas reliefs** and fluting material
- Code compliant **railings** at balconies
- Restore damaged **grilles, plasterwork**
- Replace **wallpaper** with plaster
- Restore **mirrored doors**
- **Painting** that respects the decorative intent, and is sympathetic to the ongoing conservation research
- **New carpet** that respects the decorative intent

KEY PLAN - LEVEL 3

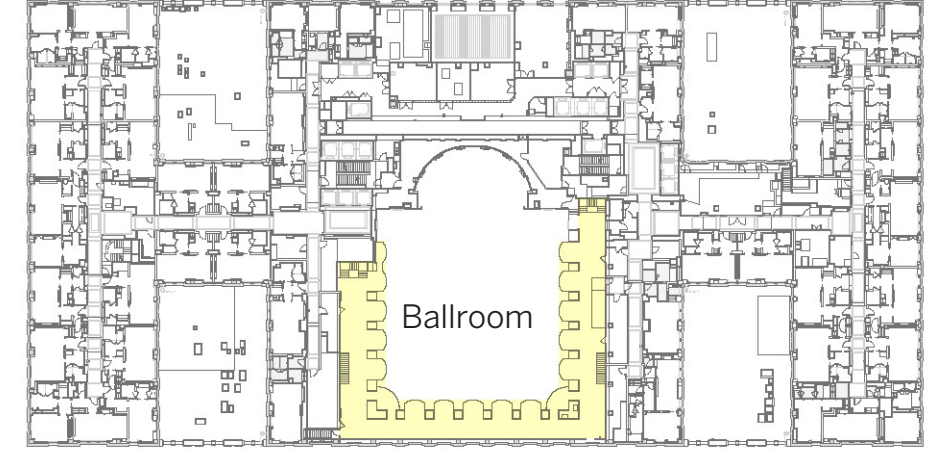




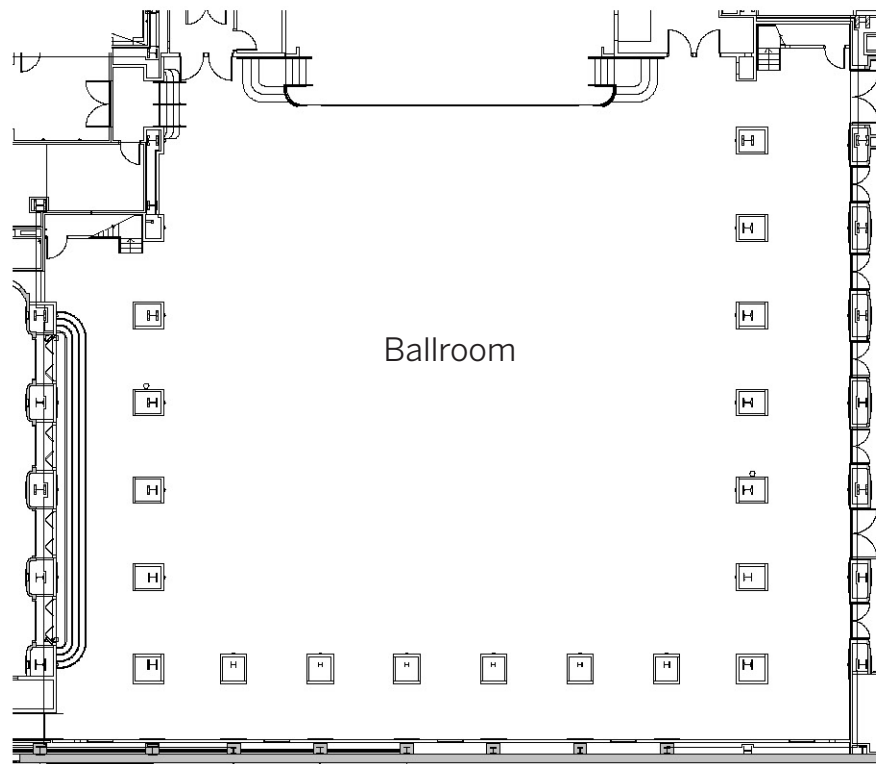
Level 3



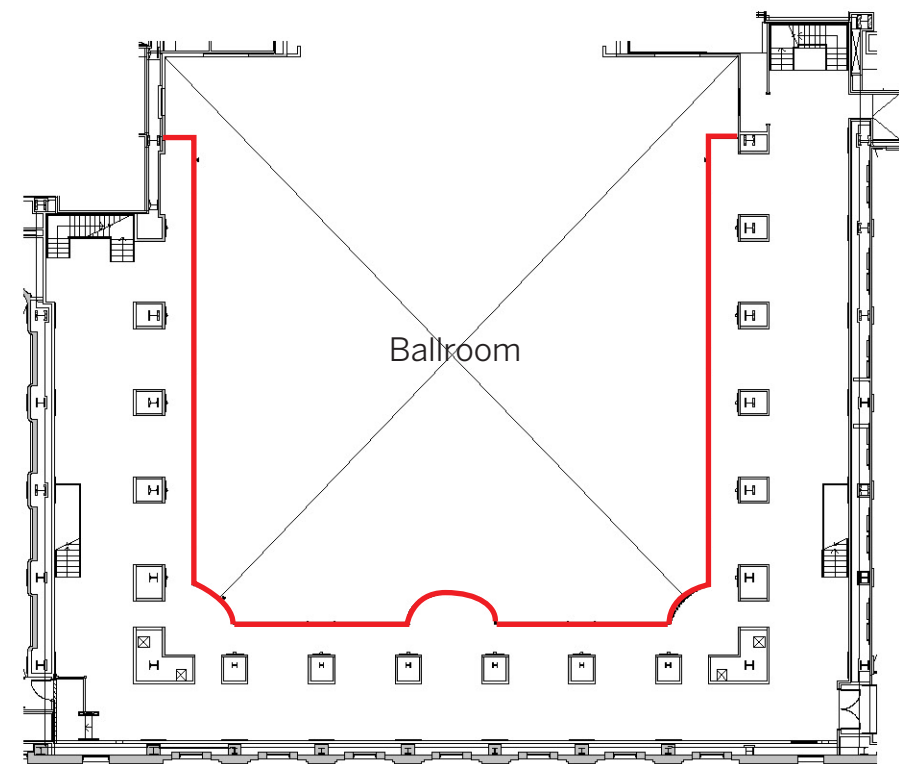
Level 4



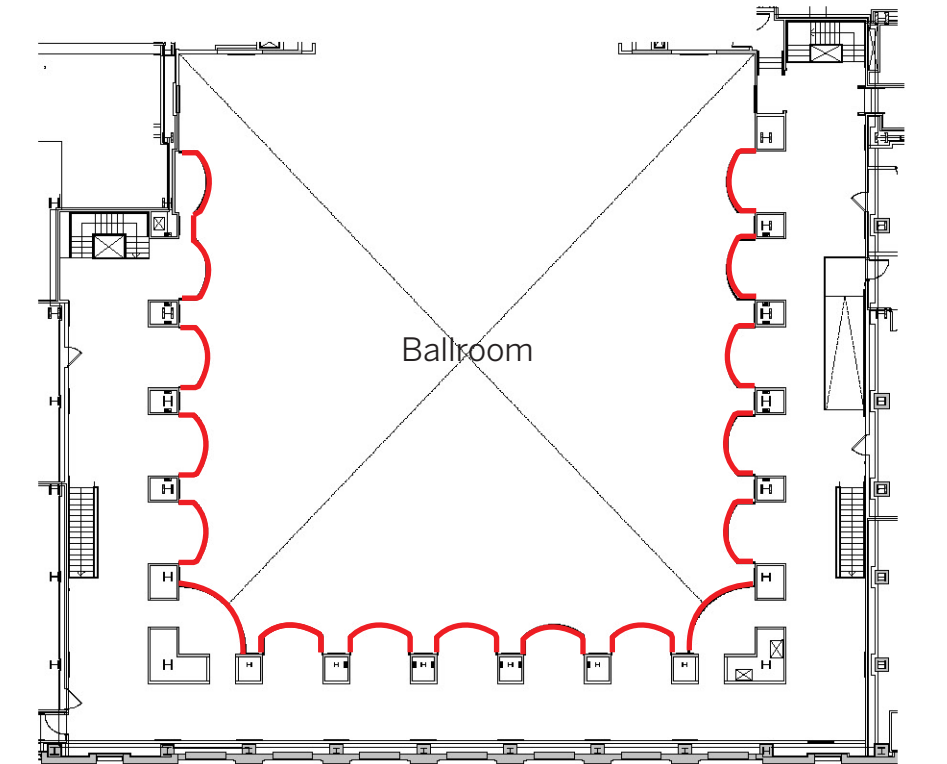
Level 5



Enlarged Level 3



Enlarged Level 4



Enlarged Level 5

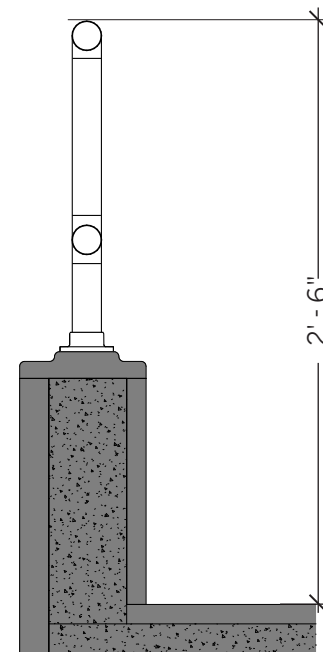
— Guardrail Location



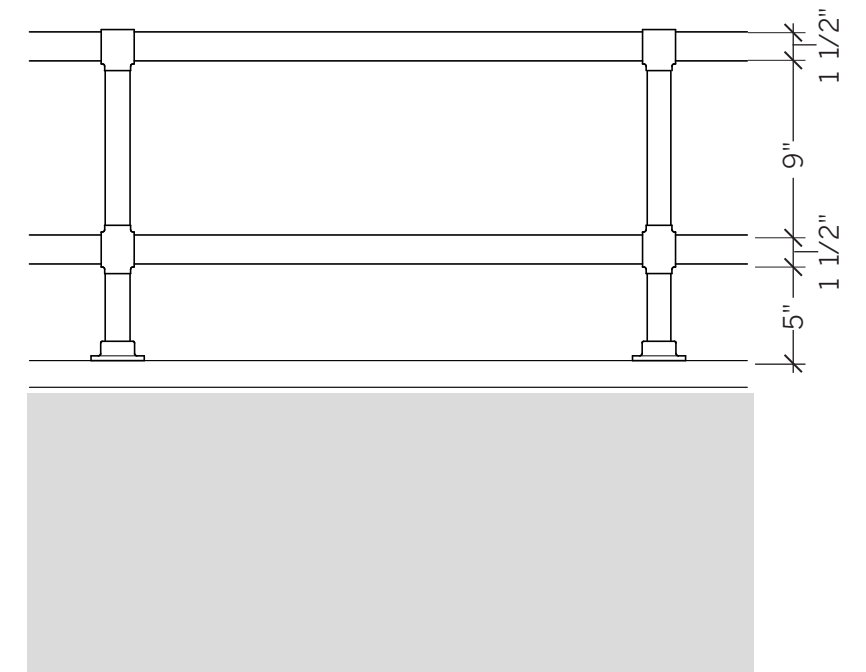
Ullstein Bild, 1934.



Ullstein Bild, 1934.



Section

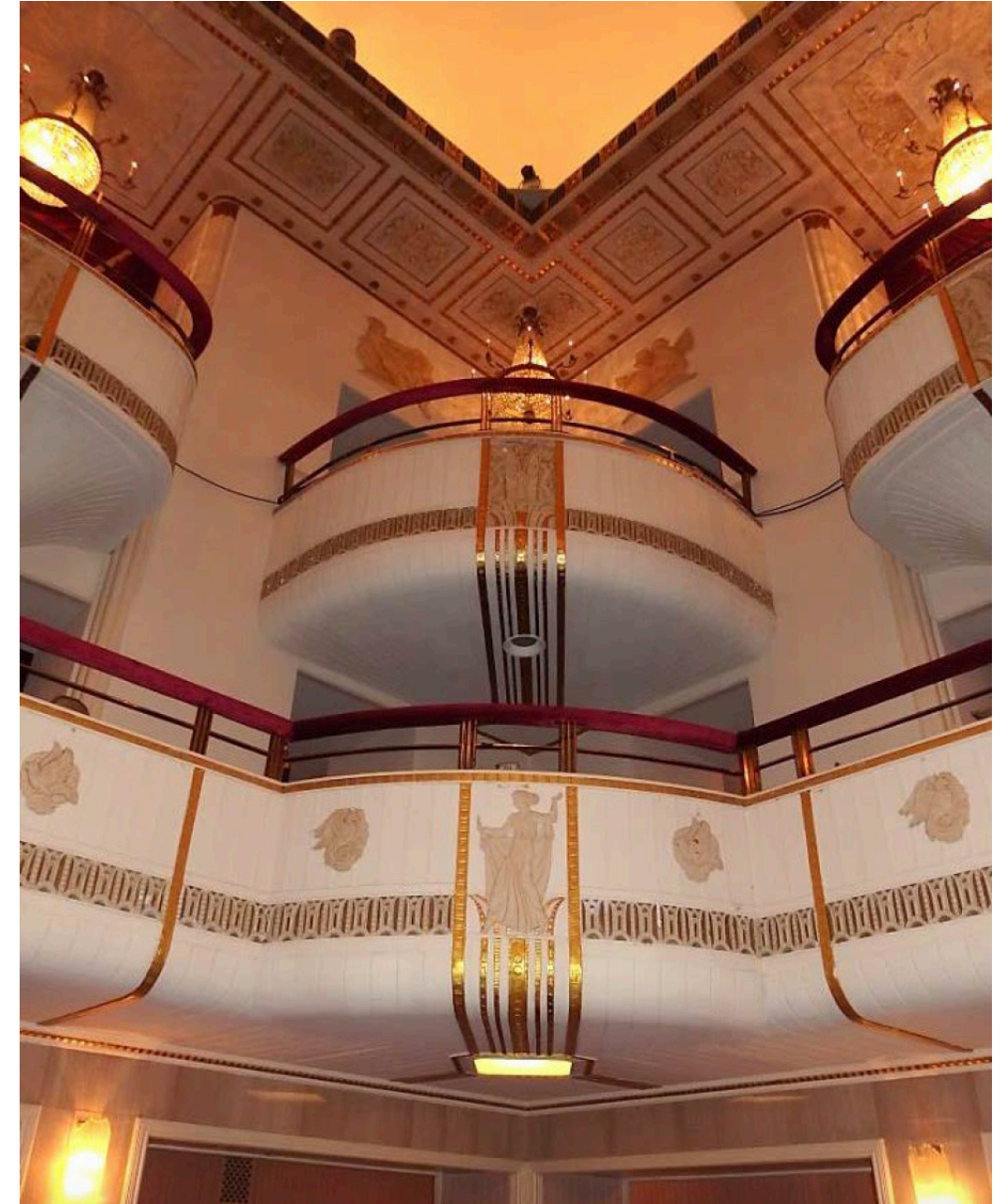


Elevation

Note: Historic guardrail dimensions are approximate. Assumed material was white metal.



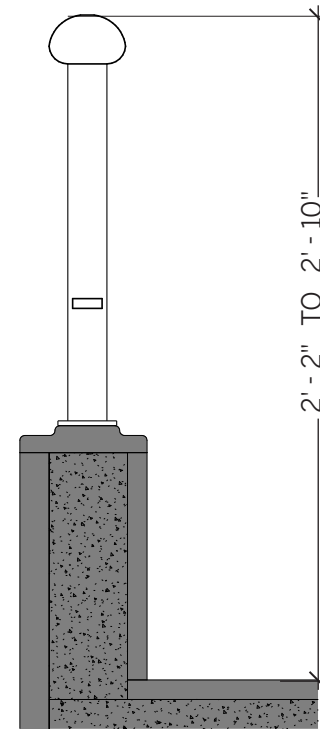
SOM, 2017.



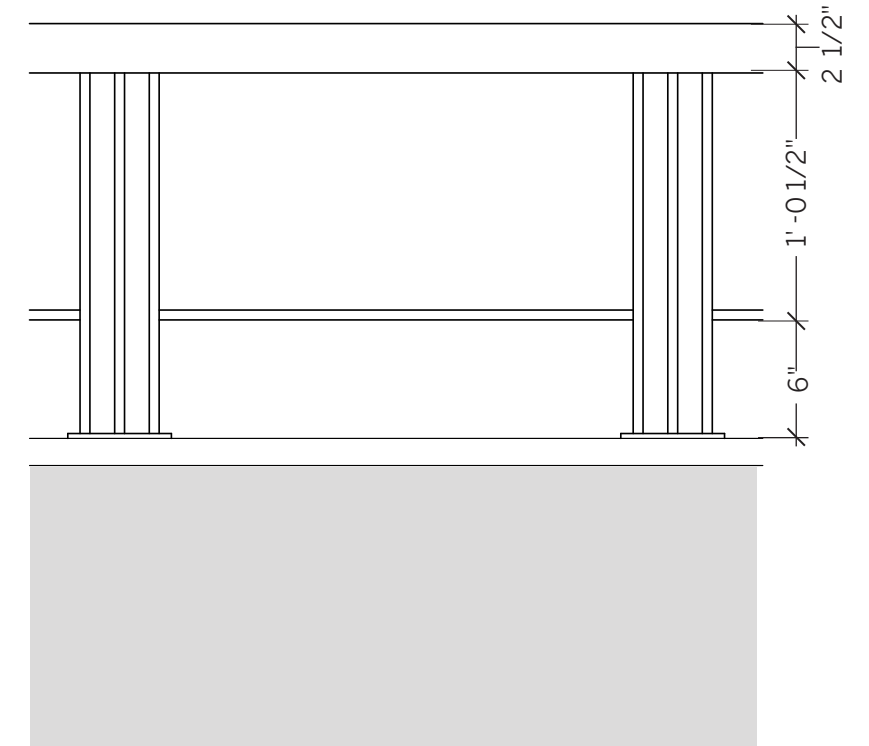
LPC Designation Report, 2017.



SOM, 2017.

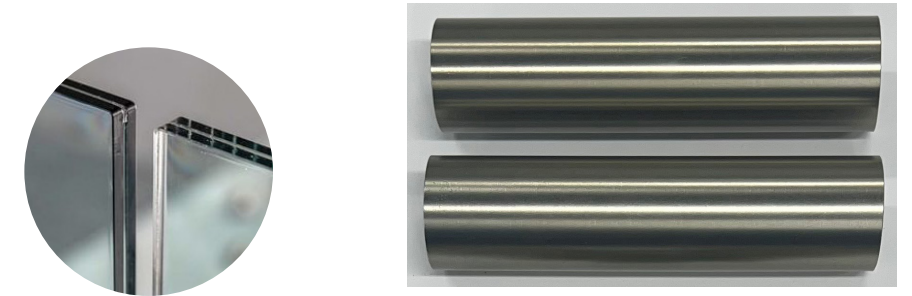


Section



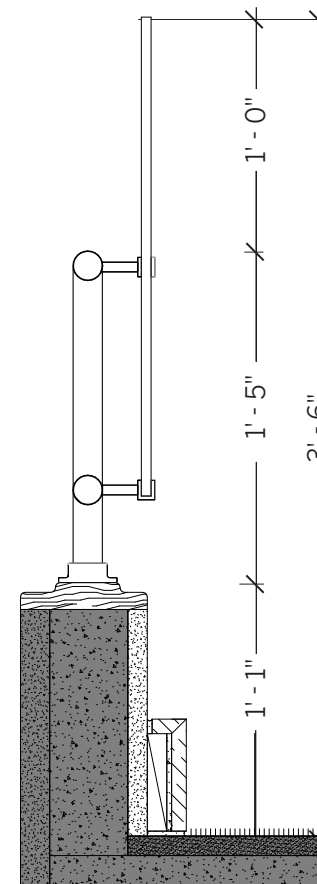
Elevation

Note: Railings are bronze. Top of railing covered by red velvet material.

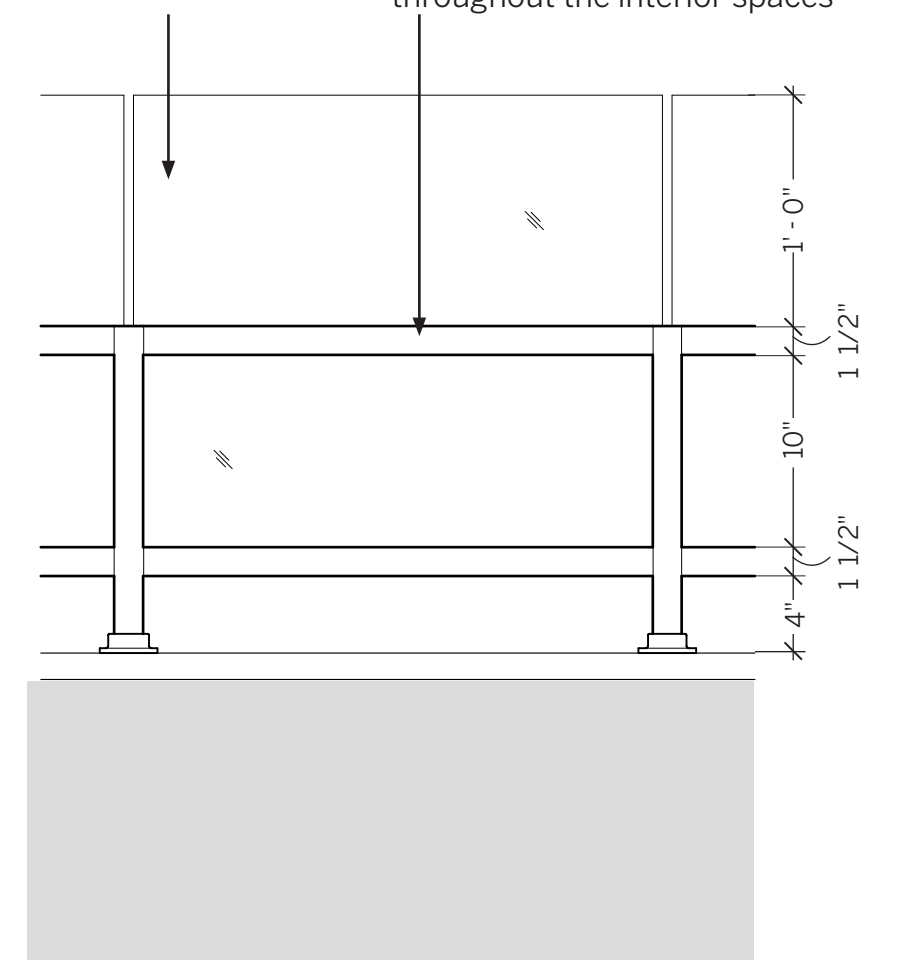


Laminated low-iron glass clipped at post

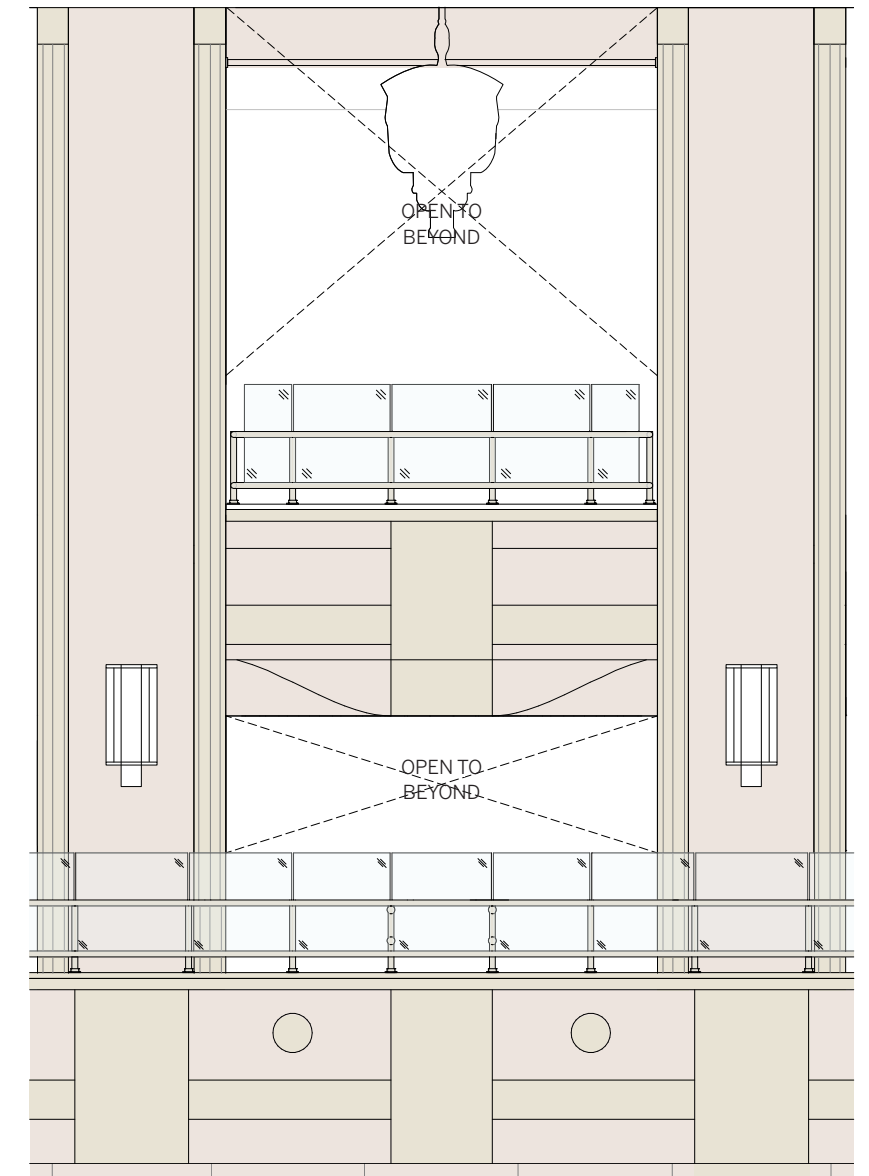
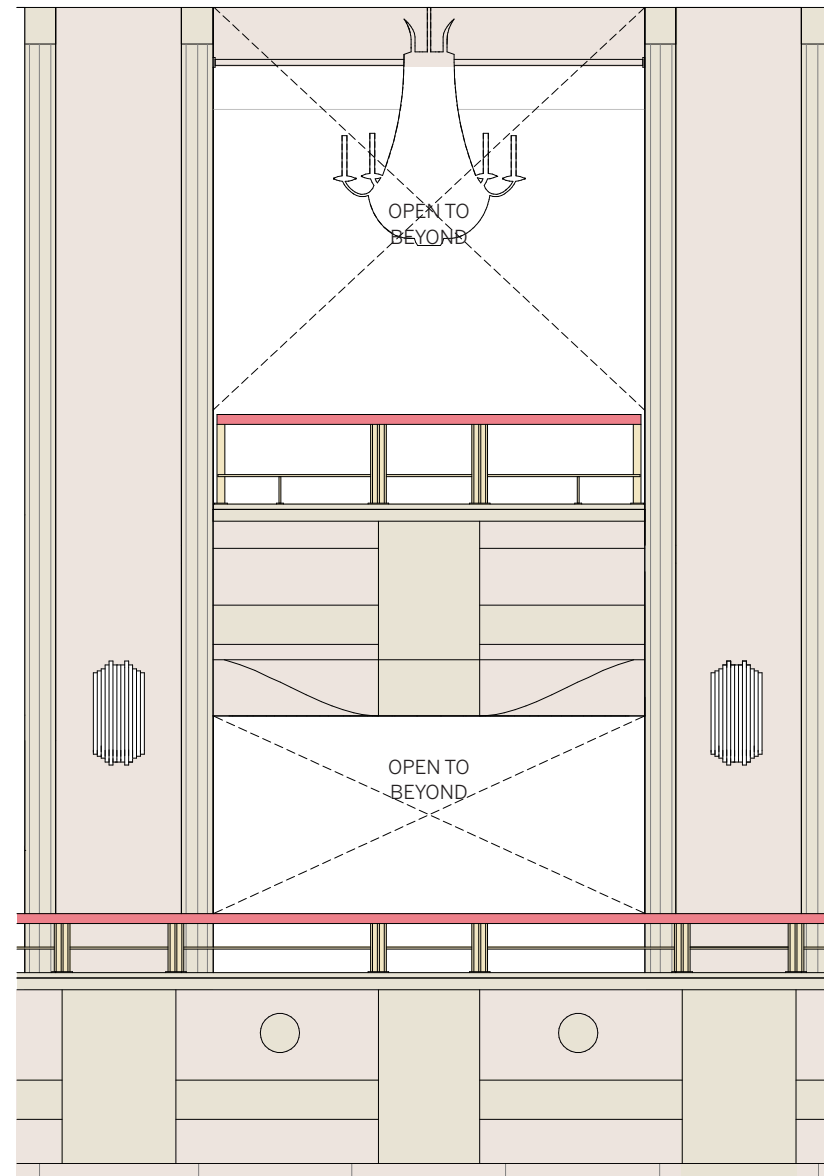
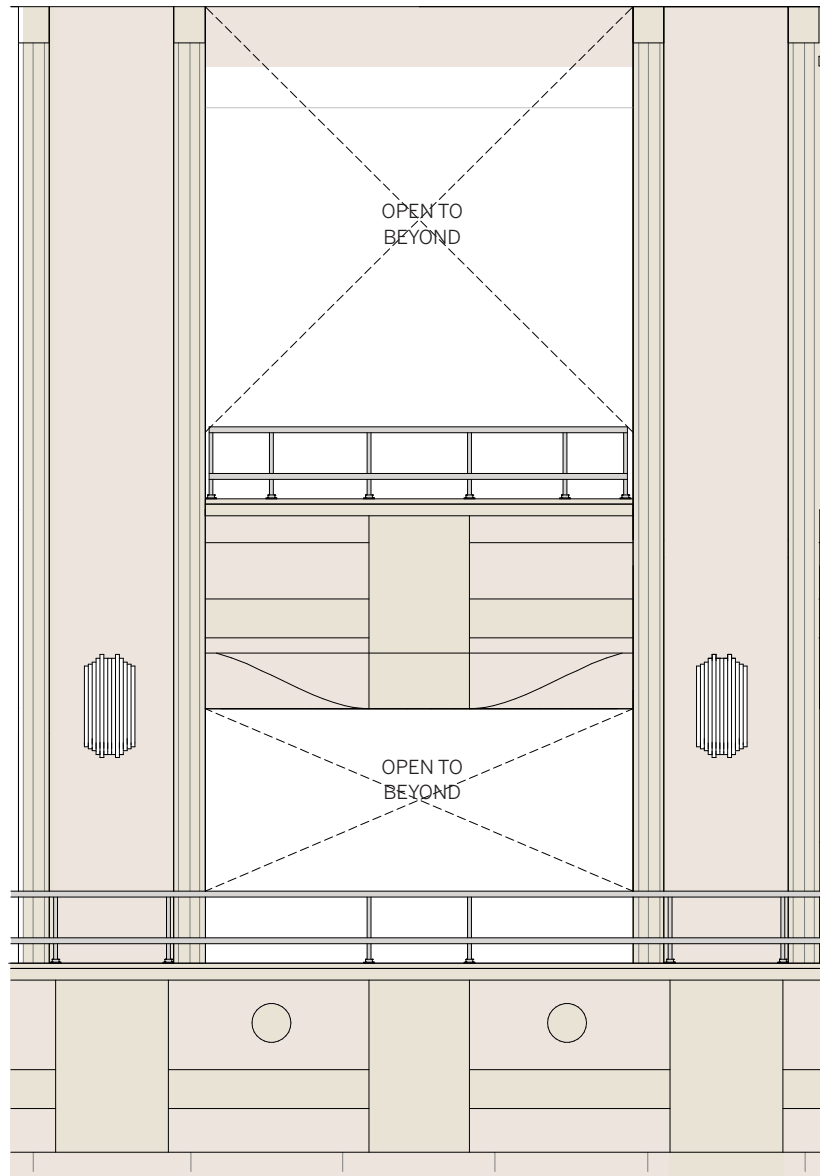
Stainless steel lacquered to match nickel silver finishes found throughout the interior spaces

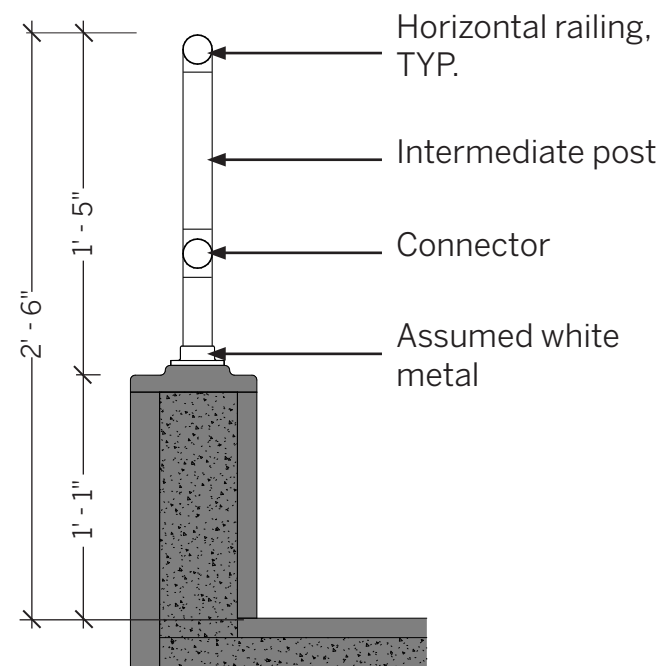


Section

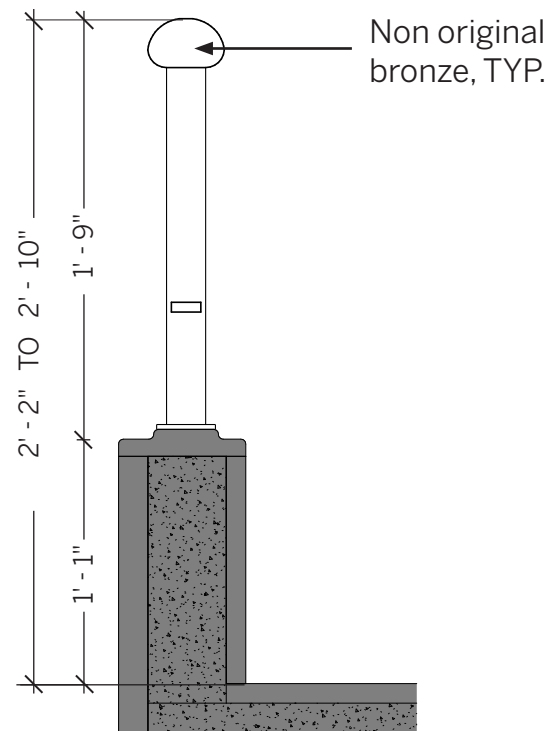


Elevation

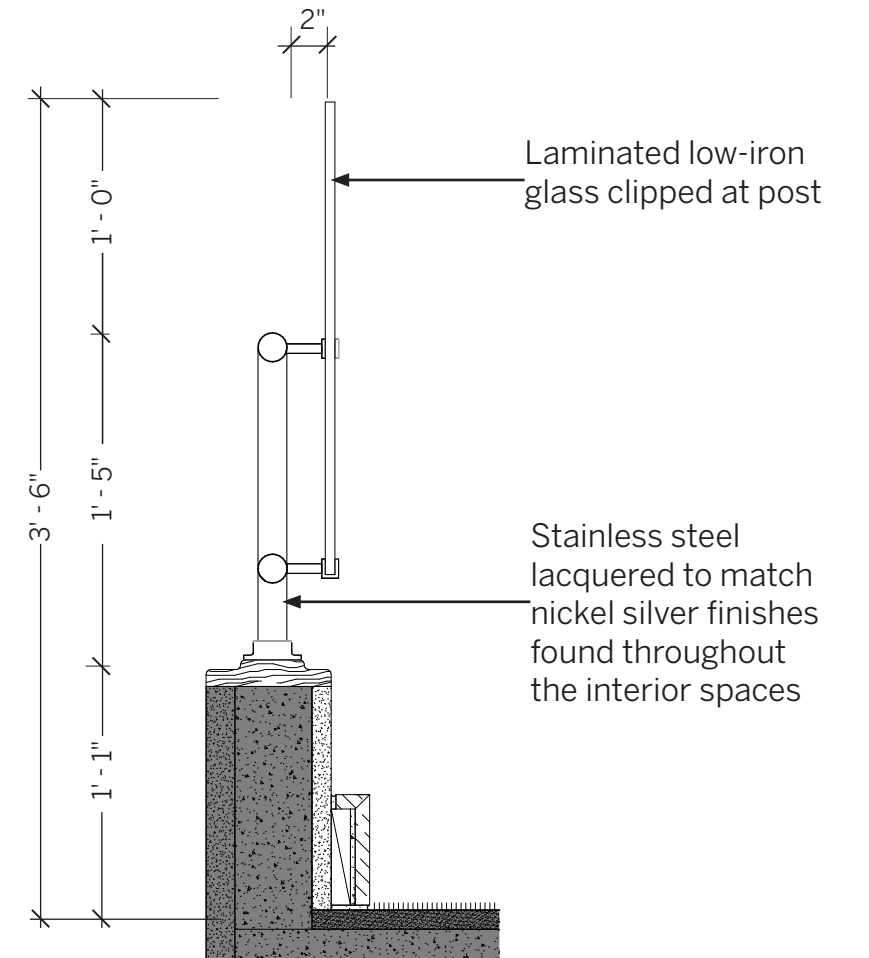




Original Elevation



Existing Elevation



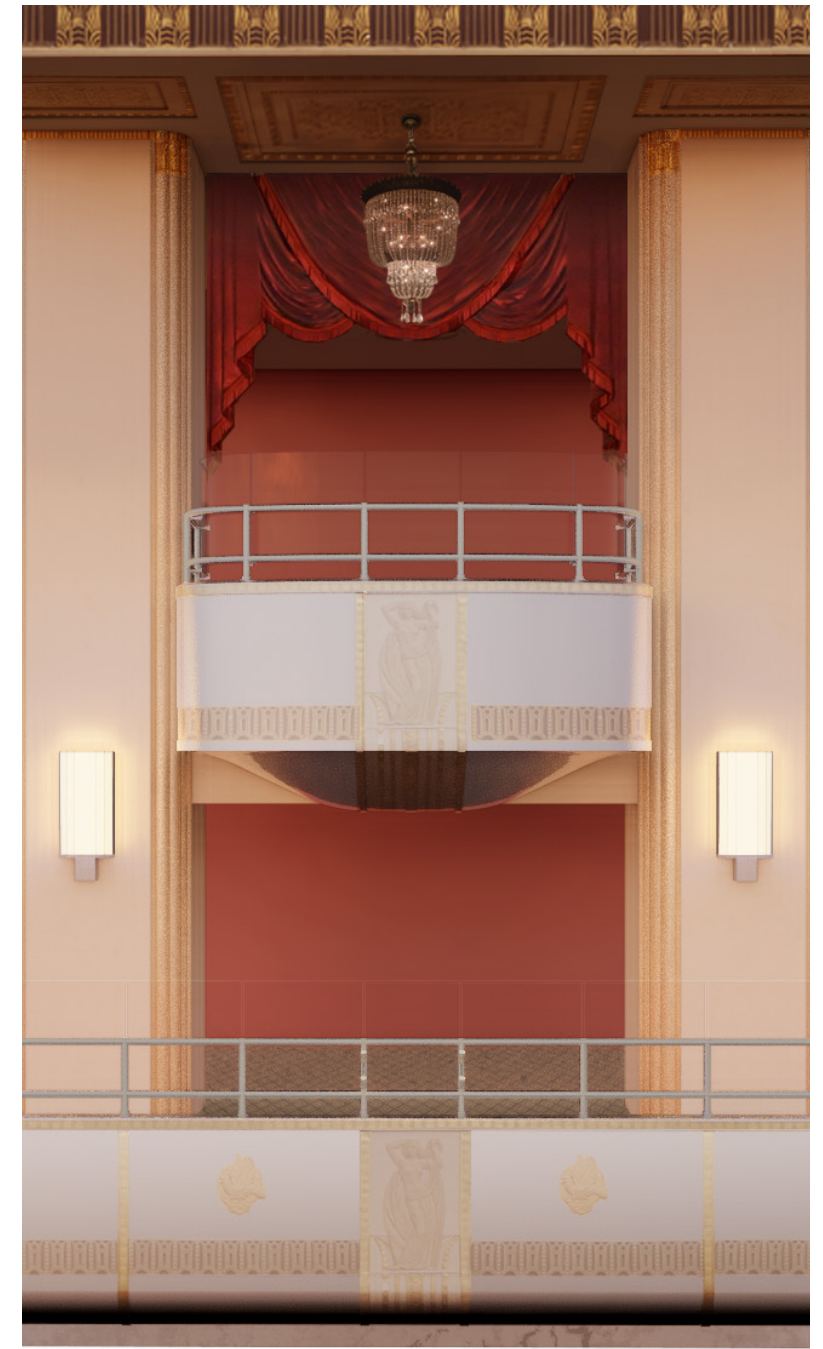
Proposed



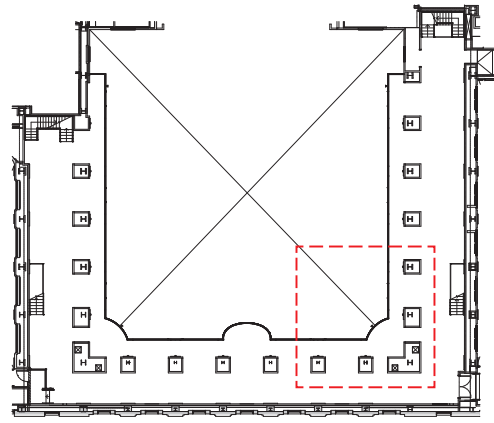
Original



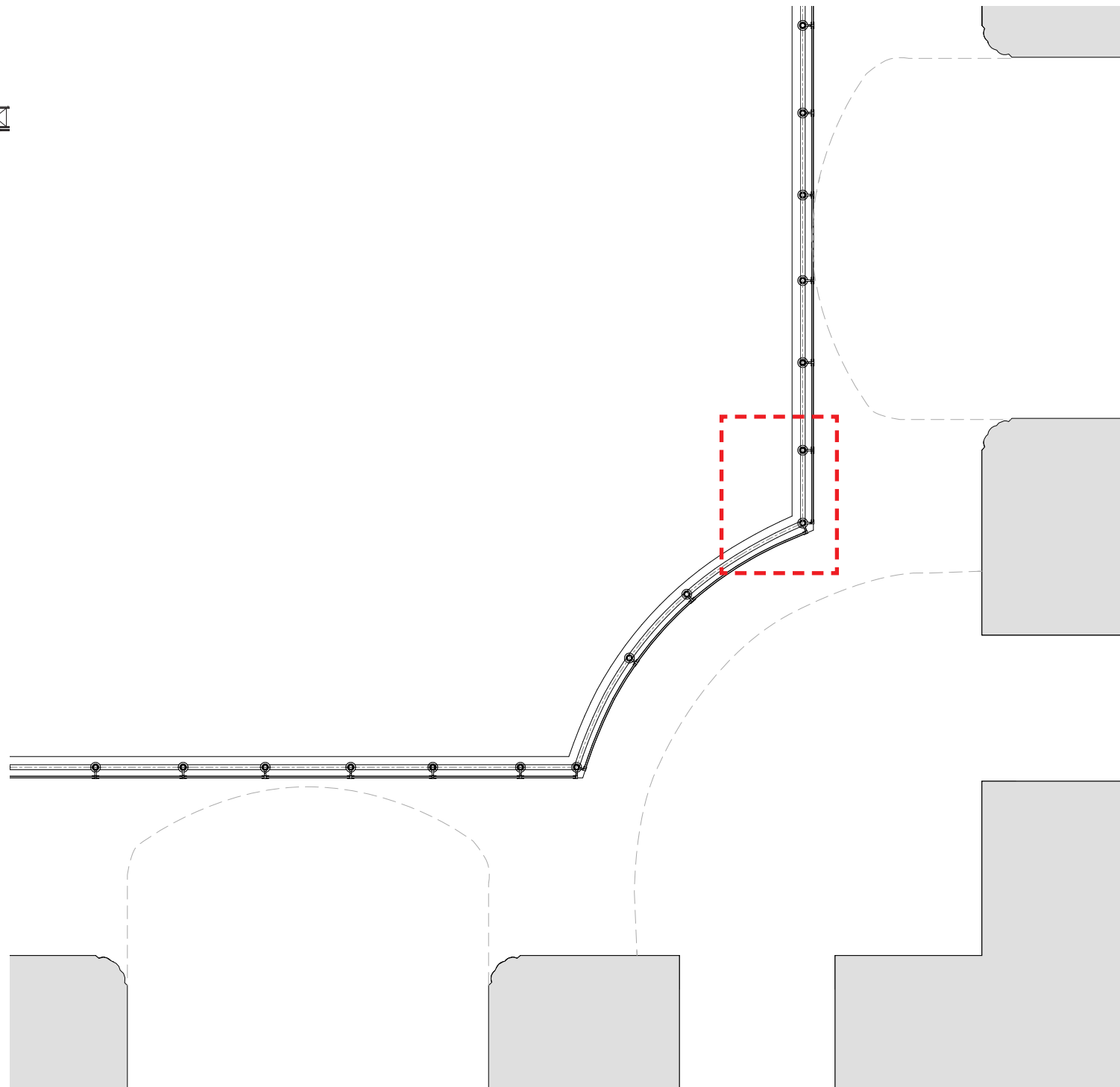
Existing



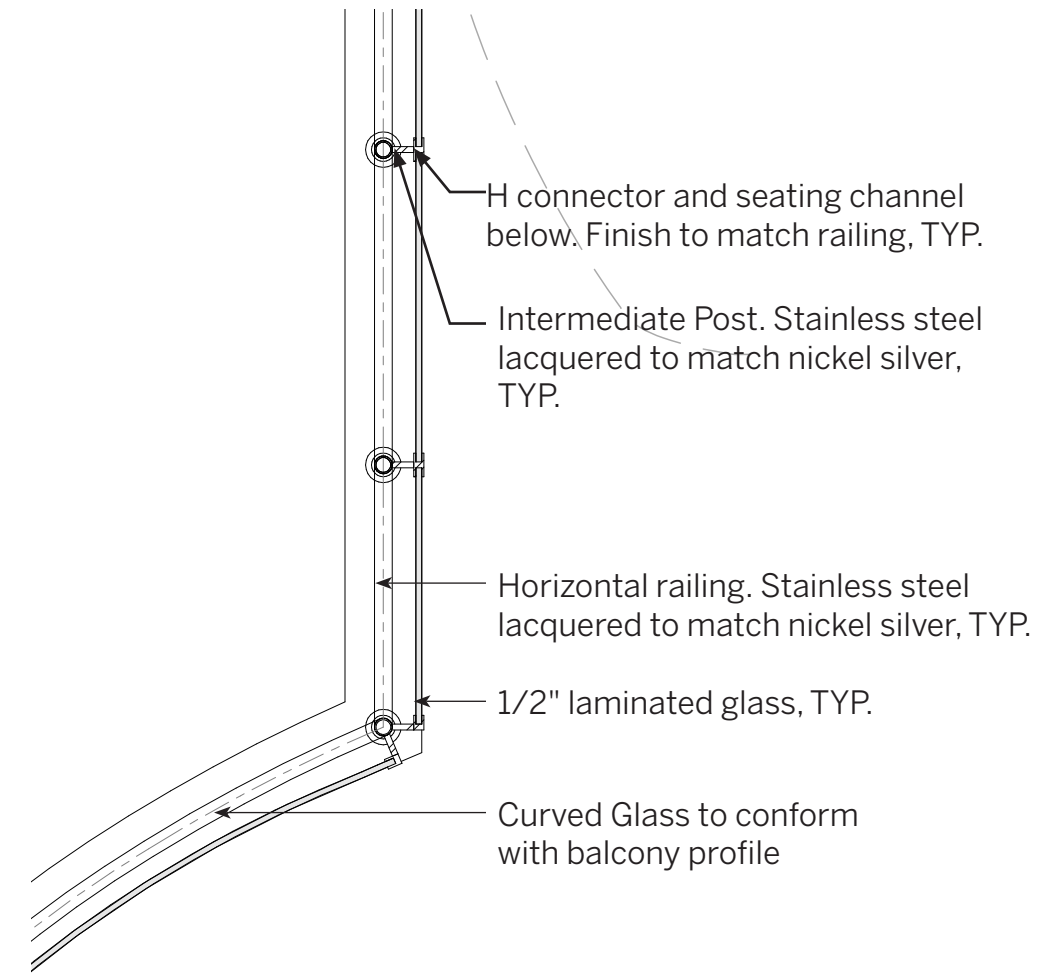
Proposed



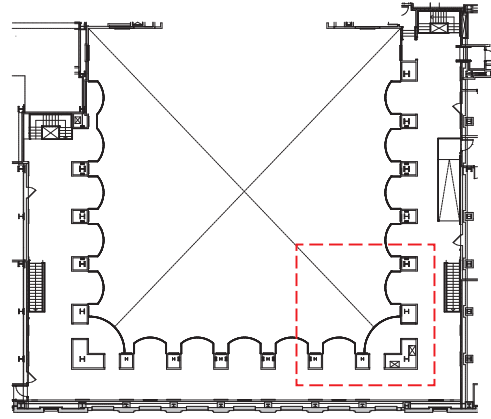
Level 4 Key Plan



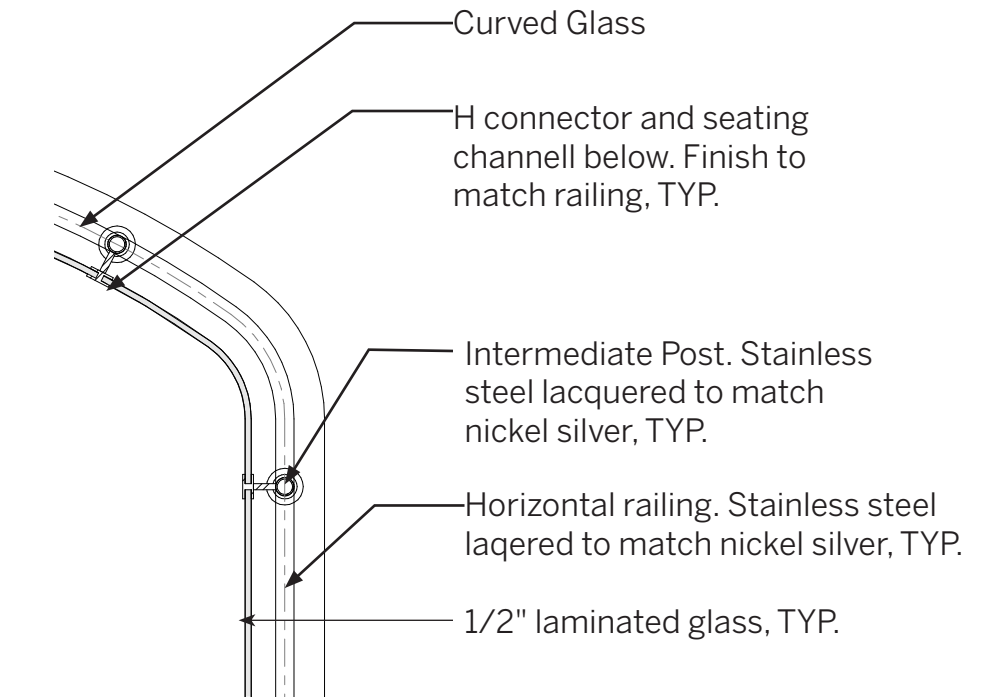
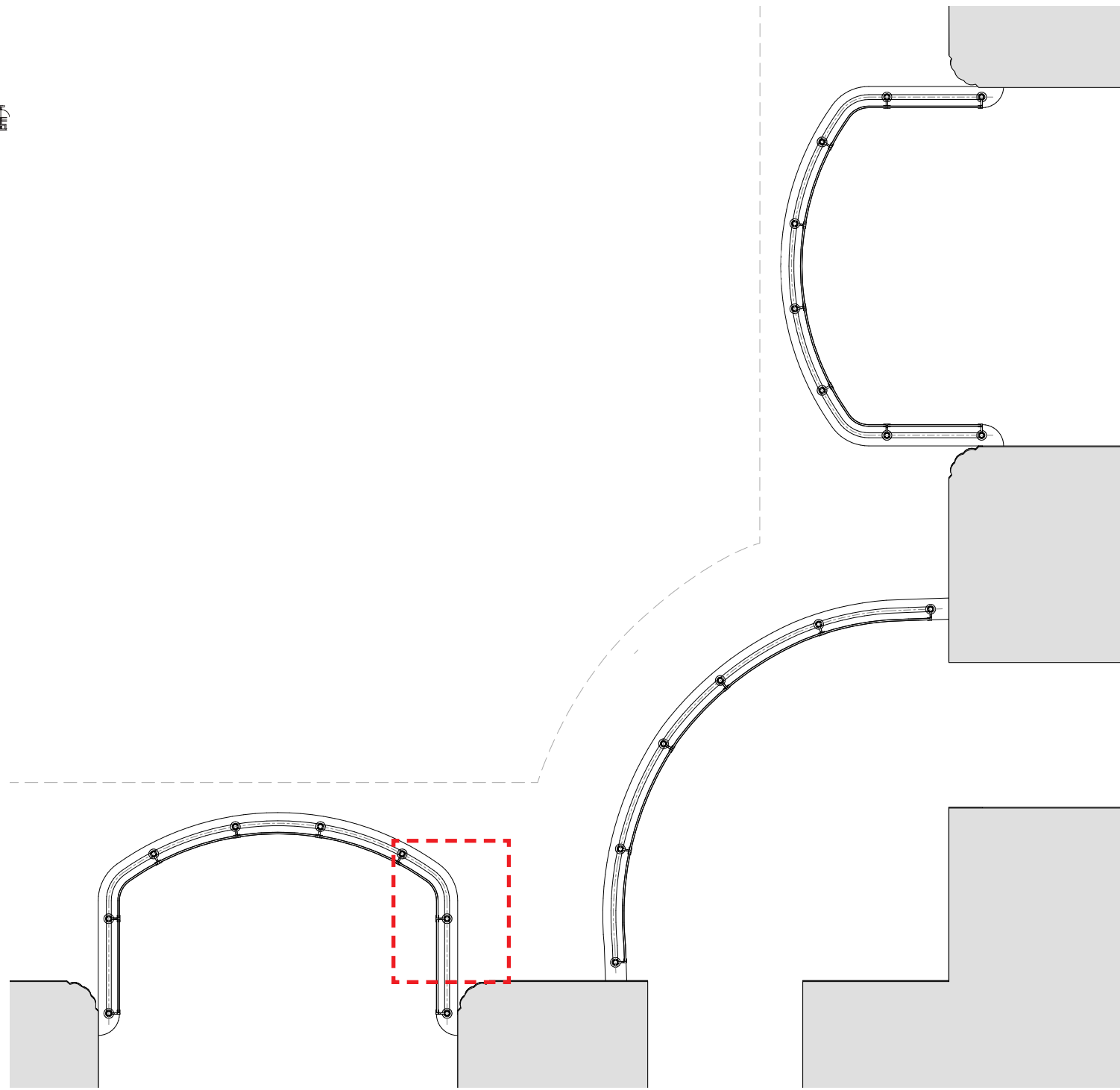
Detail Plan



Enlarged Detail Plan

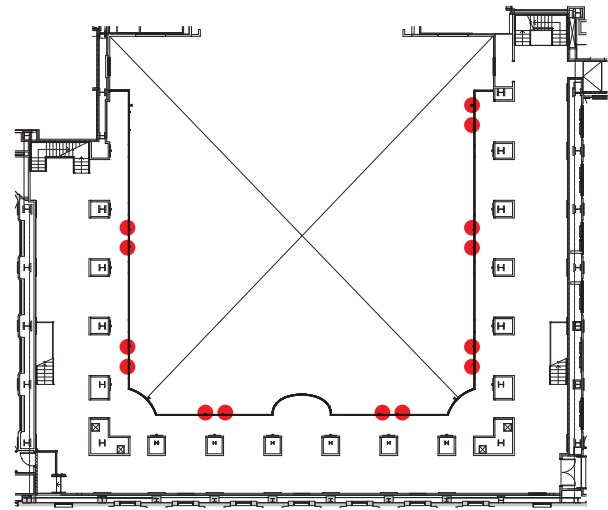


Level 5 Key Plan



Enlarged Detail Plan

Detail Plan

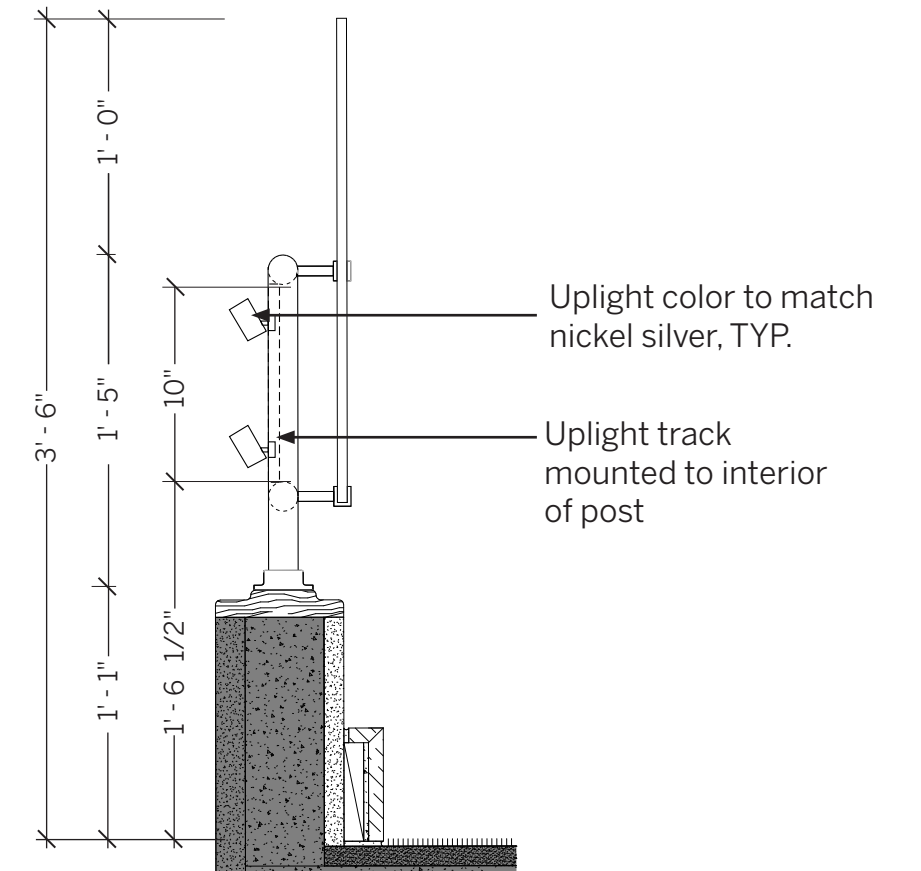


Level 4 Key Plan

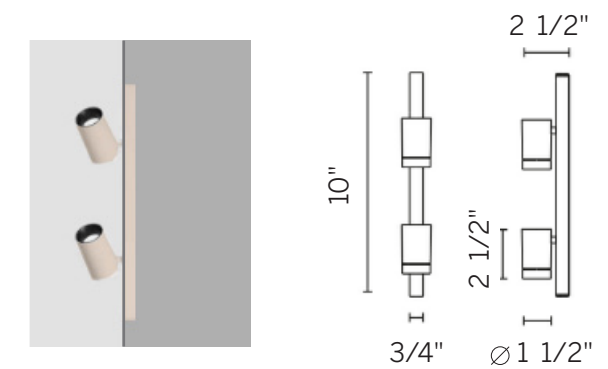
● Light Fixture Locations only at Level 4



Proposed Light Locations in Guardrail



Proposed Light Locations Detail



Light Fixture





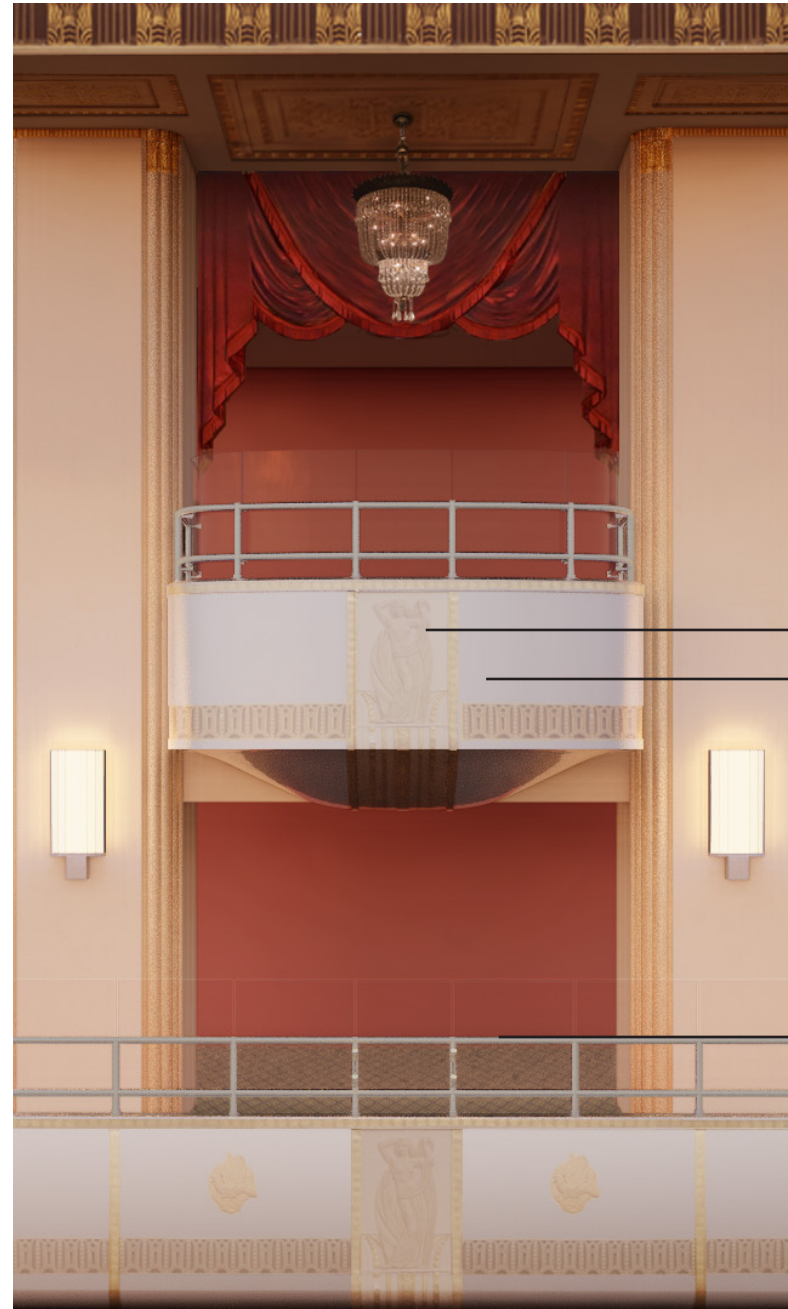


Stainless Steel Lacquered Sample

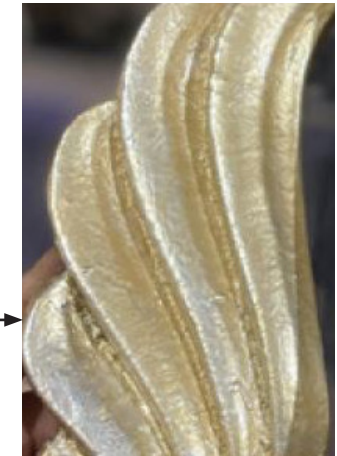
Nickel Silver Control Sample



Existing



Proposed



Leaf finish, tone #1



Leaf finish, tone #2



Stainless steel lacquered to match nickel silver

The current proposal is:

Preservation Department – Item 5, LPC-24-00959

**301 Park Avenue – Waldorf-Astoria Hotel – Individual and
Interior Landmark
Borough of Manhattan**

Note: this is a Public Meeting item. No public testimony will be received today as the hearing on this item is closed