

September 24, 2024  
Public Hearing

The current proposal is:

Preservation Department – Item 8, LPC-25-00279

# 1160 Amsterdam Avenue – Saint Paul's Chapel – Individual Landmark Borough of Manhattan

To testify virtually, please join Zoom

**Webinar ID:** 852 4740 5541

**Passcode:** 410385

By Phone: 646-558-8656 (NY)

877-853-5257 (Toll free) US

888-475-4499 (Toll free)

**Note:** If you want to testify virtually on an item, join the Zoom webinar at the agenda's "Be Here by" time (about an hour in advance). When the Chair indicates it's time to testify, "raise your hand" via the Zoom app if you want to speak (\*9 on the phone). Those who signed up in advance will be called first.





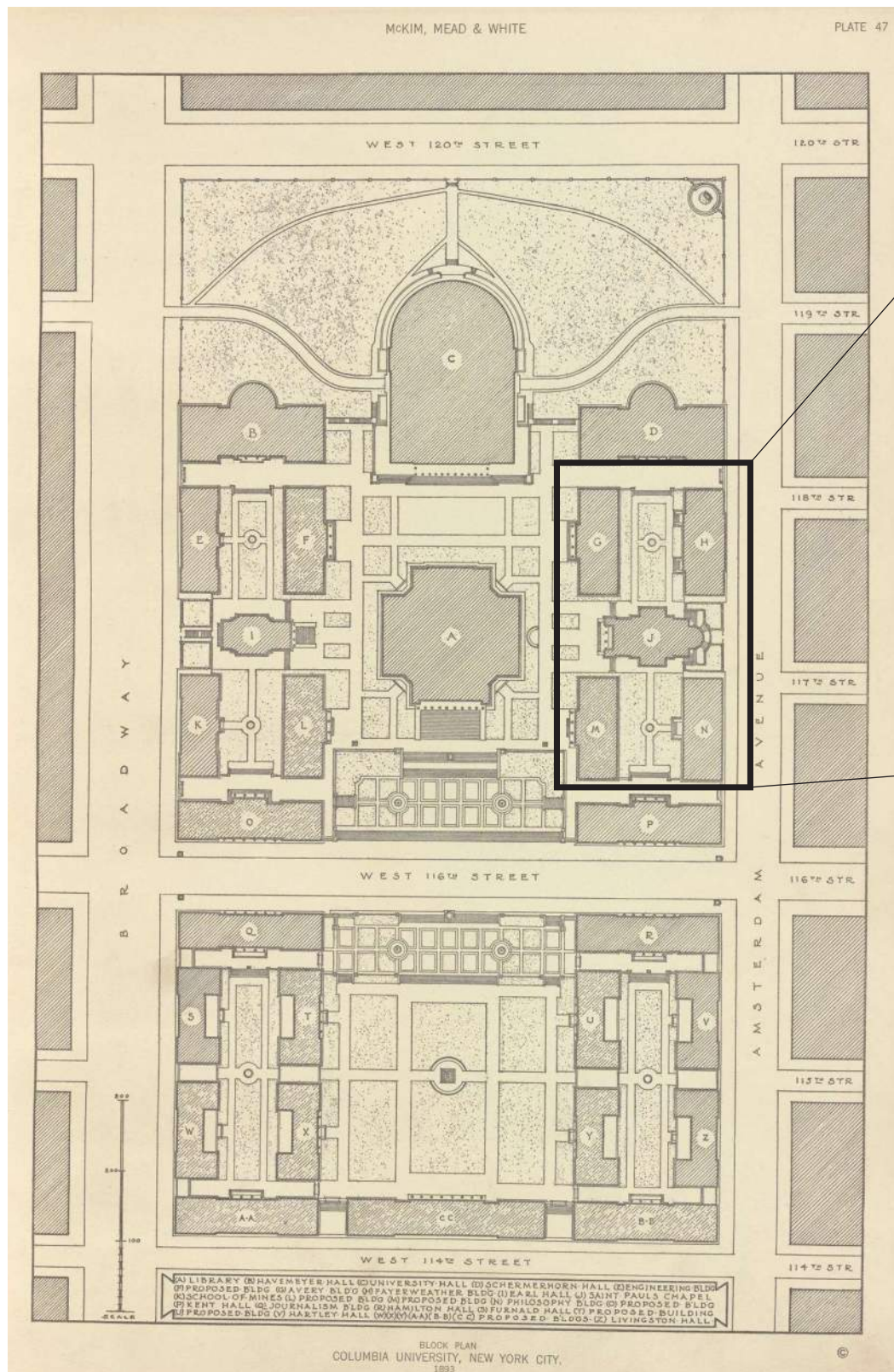
**LANDMARKS PRESERVATION COMMISSION**  
**ACCESSIBLE ENTRY RAMP, STAIR AND PORTICO PAVING RESTORATION**

WALTER B. MELVIN ARCHITECTS  
KRISTA BENTSON LANDSCAPE ARCHITECTURE

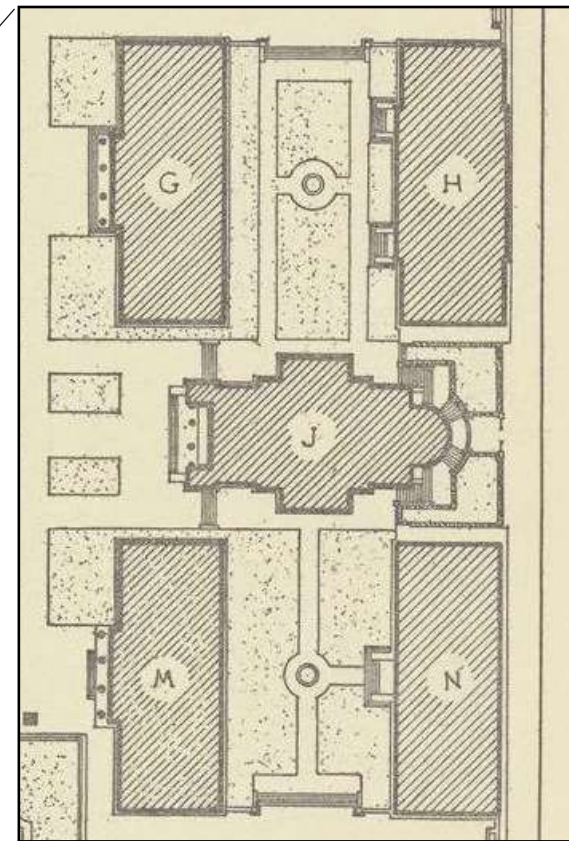
COLUMBIA UNIVERSITY - ST. PAUL'S CHAPEL  
1160 AMSTERDAM AVENUE, NY, NY

AUGUST 27, 2024





McKim Mead & White Master Plan 1893

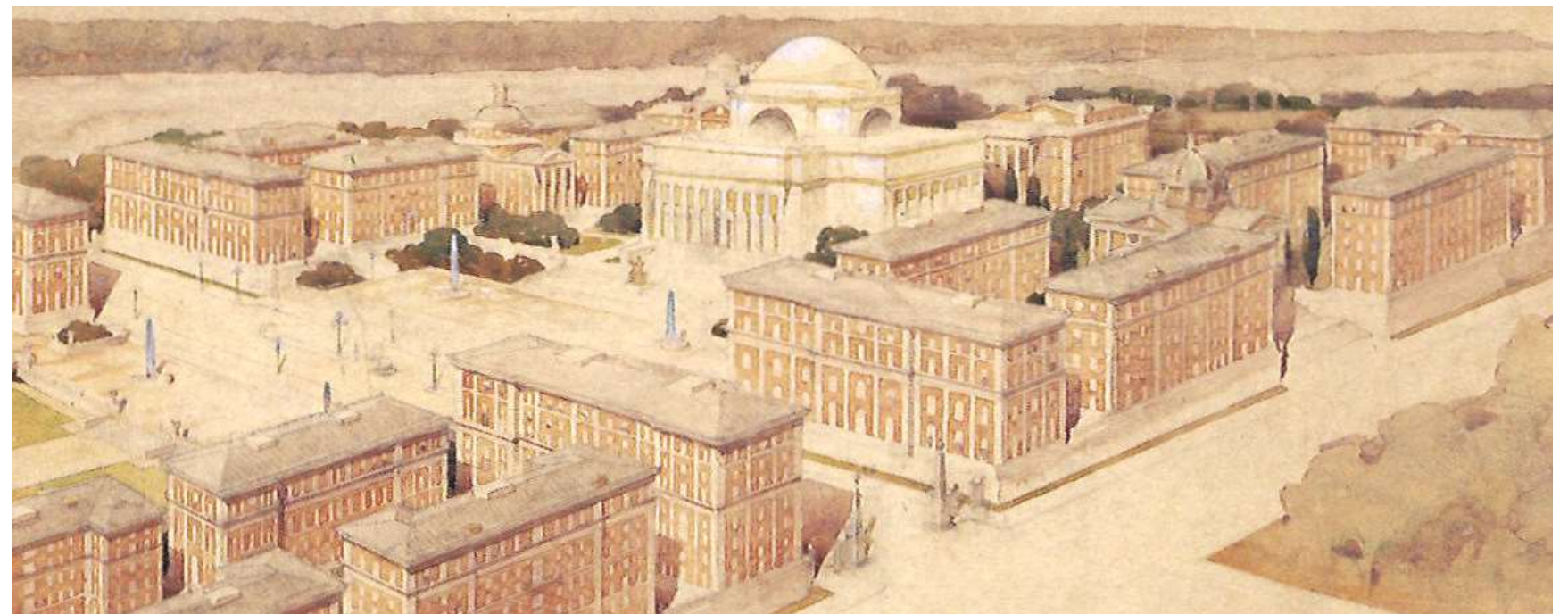


## CAMPUS PLAN

- 1890 McKim Mead & White Master Plan
- 150' Elevation "Platform"
- Campus Centered on Low Library
- Hierarchy of Domes
- Sheltered Outdoor Courts

## ST PAUL'S CHAPEL

- 1904-07 St. Paul's Chapel - Howell & Stokes
- Deferential to McKim Mead & White's Design
- Transitional Morphology & Materiality
- Sister of Earl Hall
- Campus Entry Point



McKim Mead & White Perspective 1903

# ORIGINAL MASTER PLAN

WALTER B. MELVIN ARCHITECTS  
KRISTA BENTSON LANDSCAPE ARCHITECTURE

COLUMBIA UNIVERSITY - ST. PAUL'S CHAPEL  
1160 AMSTERDAM AVENUE, NY, NY

LANDMARKS PRESERVATION COMMISSION



## CAMPUS DEVELOPMENT

- Alternate Plans
- Slow Development
- Perimeter Bar Buildings
- IM Pei Master Plan

## EAST SITE ENTRY

- “Platform” Access Alternative
- Extension of 150’ Elevation Platform
- Walling of Northern Entry
- Revson Plaza

## COURTYARD

- Avery-Only Inner Bar Building
- Only Bar-Defined Court
- Avery Extension below Avery Court



HOWELL & STOKES RENDERING - 1903



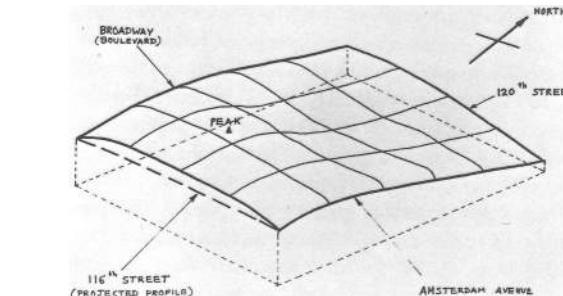
AVERY PHOTO - 1907



AERIAL PHOTO - 1925



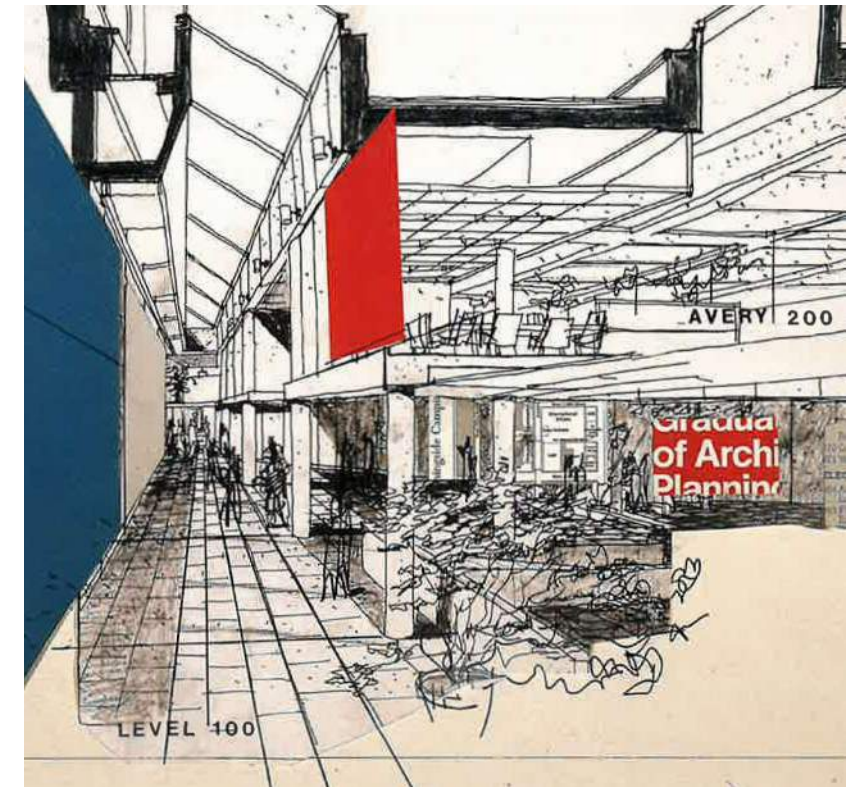
EAST SUPERBLOCK - 1956



TOPOGRAPHIC DIAGRAM



LAW SCHOOL - 1961



AVERY COURT EXTENSION - 1975

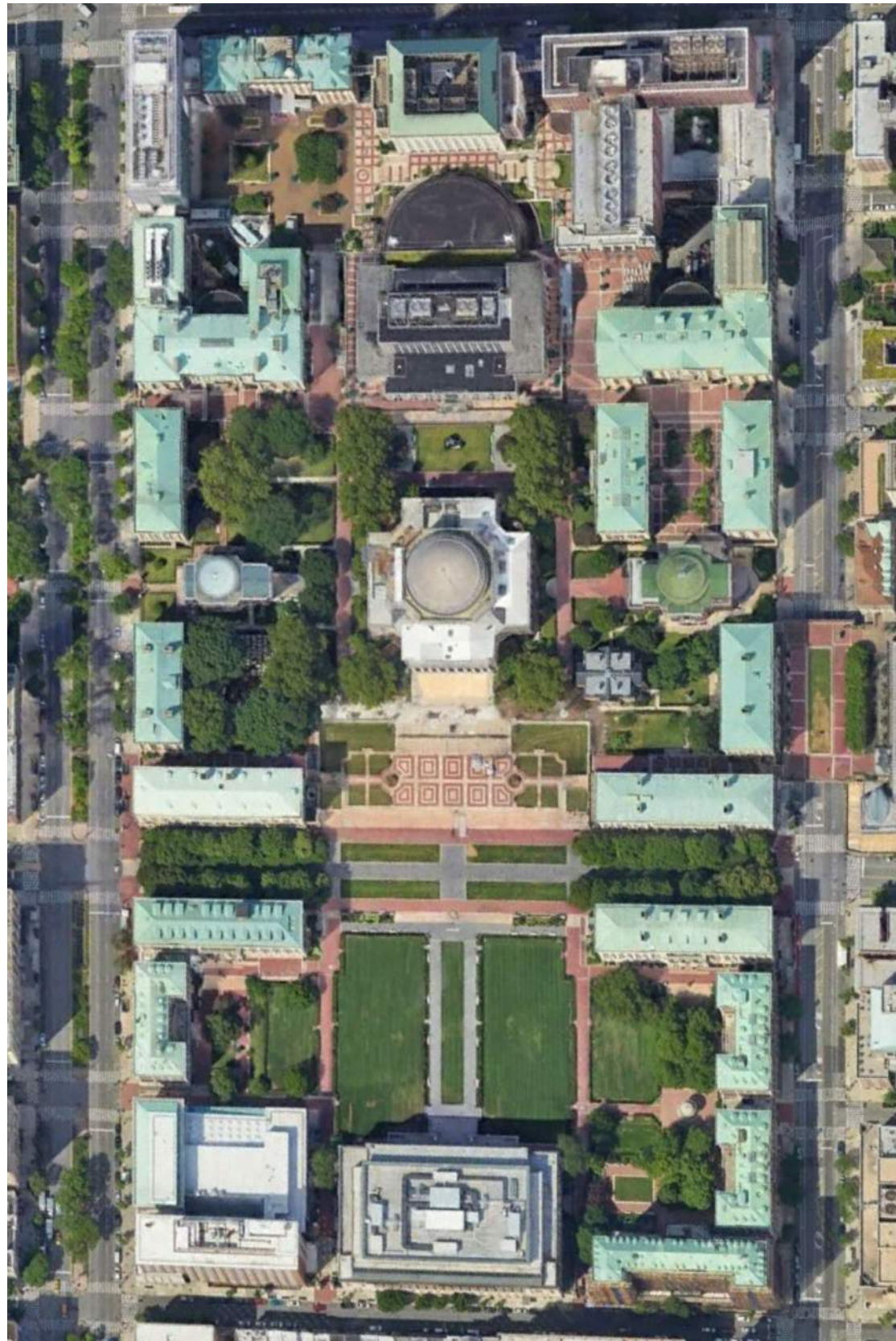
# PLANNING & IMPLEMENTATION OVER TIME

WALTER B. MELVIN ARCHITECTS  
KRISTA BENTSON LANDSCAPE ARCHITECTURE

COLUMBIA UNIVERSITY - ST. PAUL'S CHAPEL  
1160 AMSTERDAM AVENUE, NY, NY

LANDMARKS PRESERVATION COMMISSION





CURRENT AERIAL VIEW



CURRENT VIEW FROM AVERY COURT

**CONTEXT**

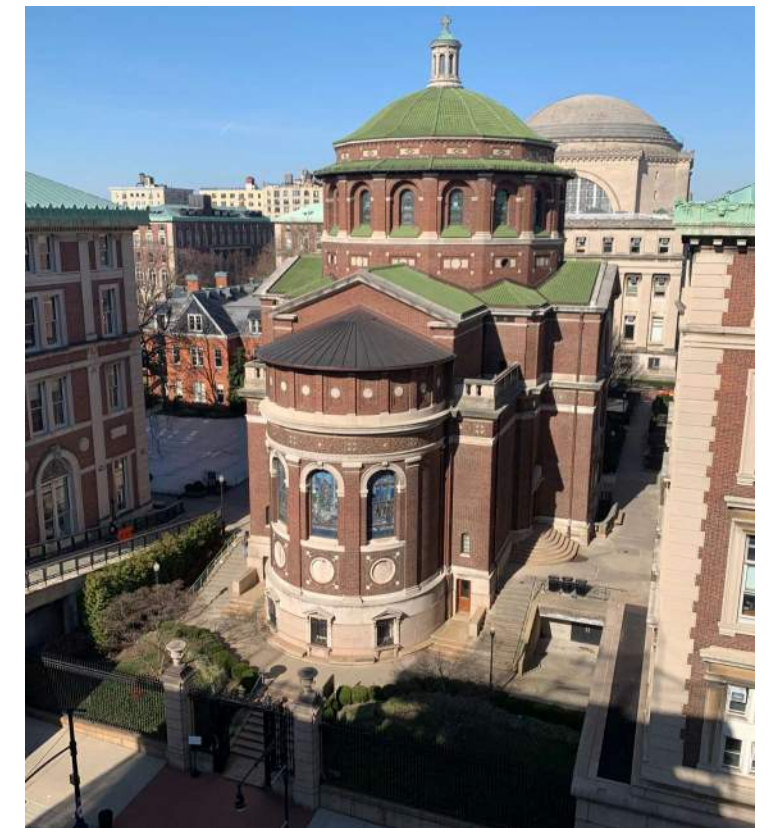
- Important Secondary Access
- Only Original Courtyard
- Gates from Park Place Church
- Special Status in Master Plan
- History of Campus Grading



NORTH DUTCH CHURCH GATES - CIRCA 1770'S



AVERY COURT - CIRCA 1920'S



CURRENT EAST VIEW

**ST. PAUL'S CONNECTION TO ORIGINAL PLANNING**

WALTER B. MELVIN ARCHITECTS  
KRISTA BENTSON LANDSCAPE ARCHITECTURE

COLUMBIA UNIVERSITY - ST. PAUL'S CHAPEL  
1160 AMSTERDAM AVENUE, NY, NY

LANDMARKS PRESERVATION COMMISSION





WEST PLAZA LOOKING EAST



WEST PLAZA LOOKING NORTH

## PROJECT GOALS

- Provide for similar entry experience regardless of mobility.
- Honor original Master Plan in context of modern requirements and development history.
- Align with campus materials and details while maintaining differentiation between new and old.
- Restore damaged historic elements.
- Improve long-term maintenance, drainage, and sustainability.



VIEW OF ST. PAUL'S SOUTHWEST CORNER



WEST PLAZA LOOKING EAST



WEST PLAZA LOOKING NORTHEAST

# ST. PAUL'S EXISTING CONDITIONS

WALTER B. MELVIN ARCHITECTS  
KRISTA BENTSON LANDSCAPE ARCHITECTURE

COLUMBIA UNIVERSITY - ST. PAUL'S CHAPEL  
1160 AMSTERDAM AVENUE, NY, NY

LANDMARKS PRESERVATION COMMISSION

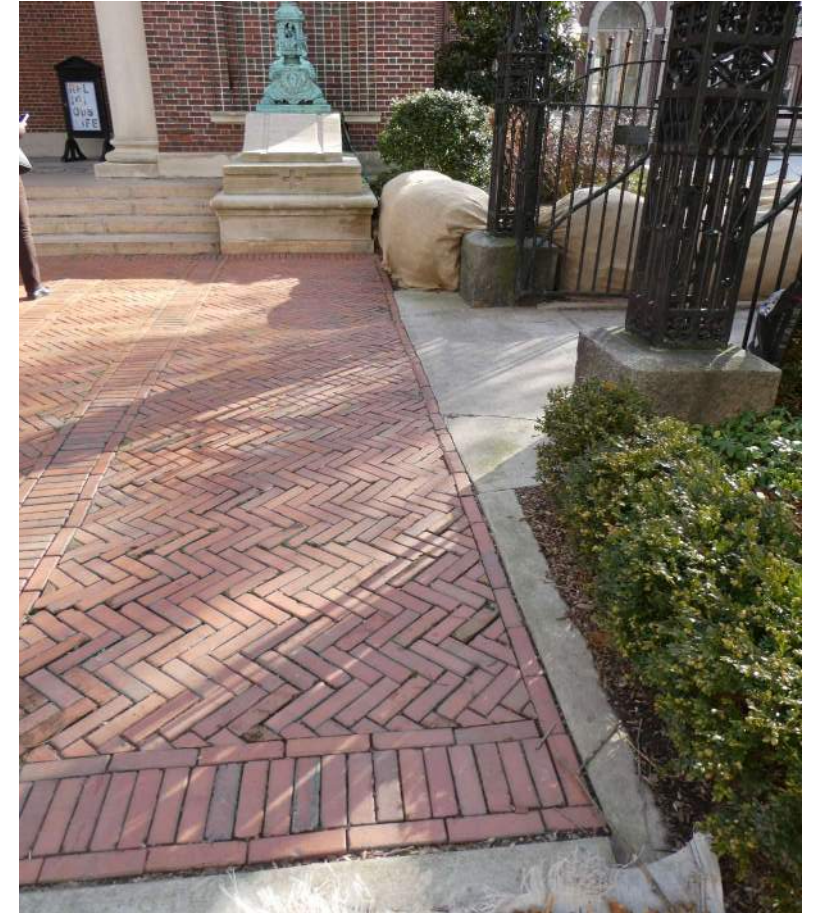




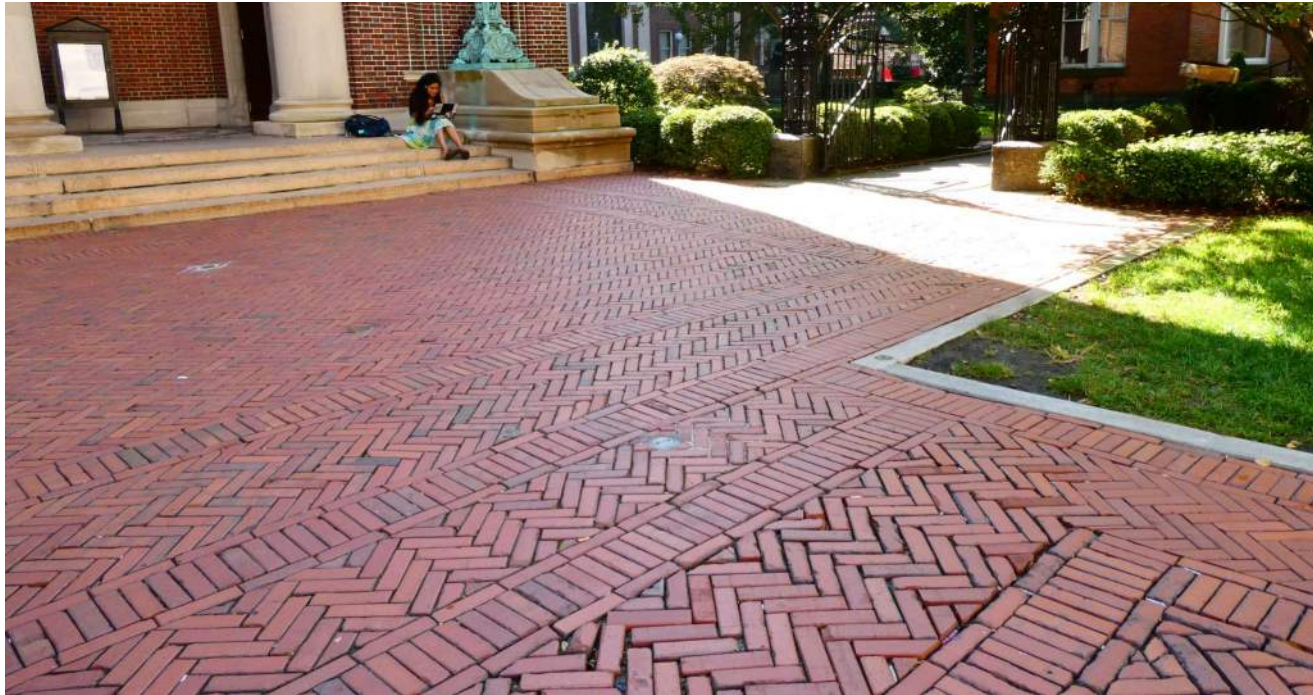
WEST PLAZA LOOKING EAST



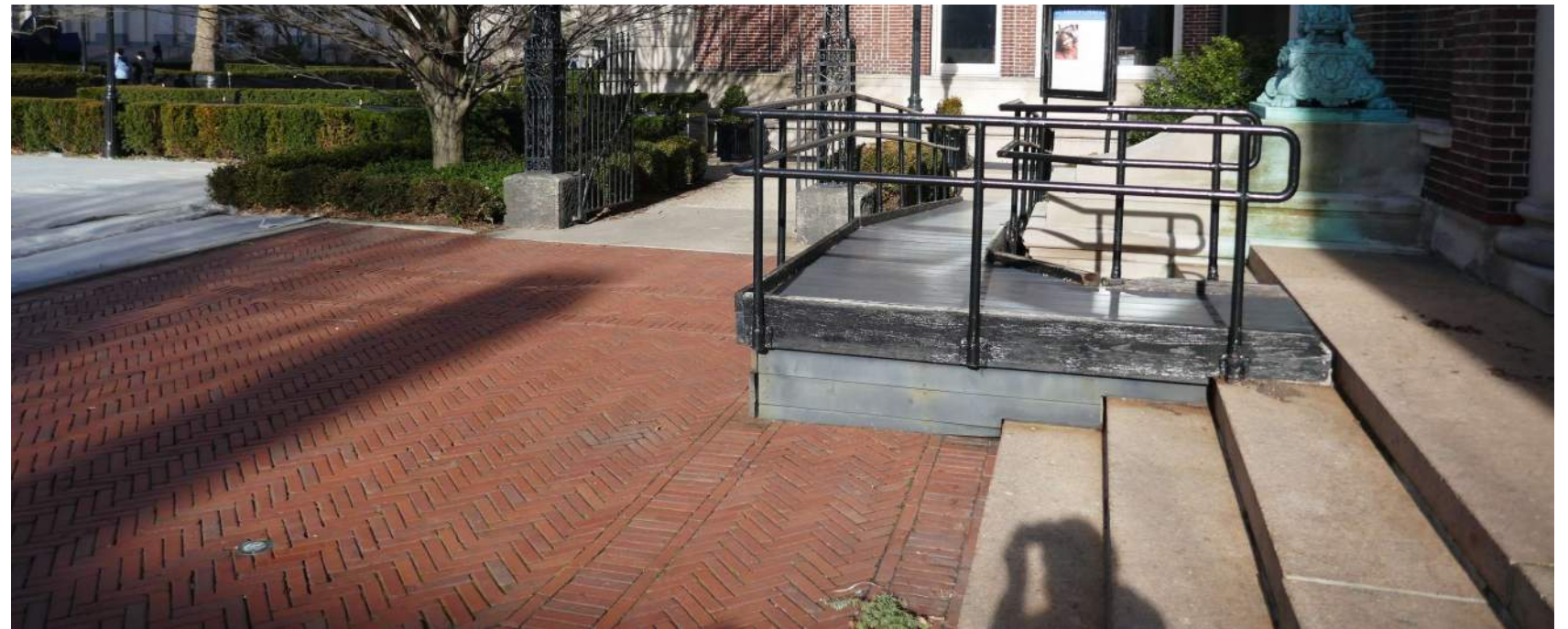
PORTICO LOOKING EAST



SOUTH SIDE OF WEST PLAZA LOOKING EAST



WEST PLAZA LOOKING SOUTH-EAST



WEST PLAZA LOOKING NORTH

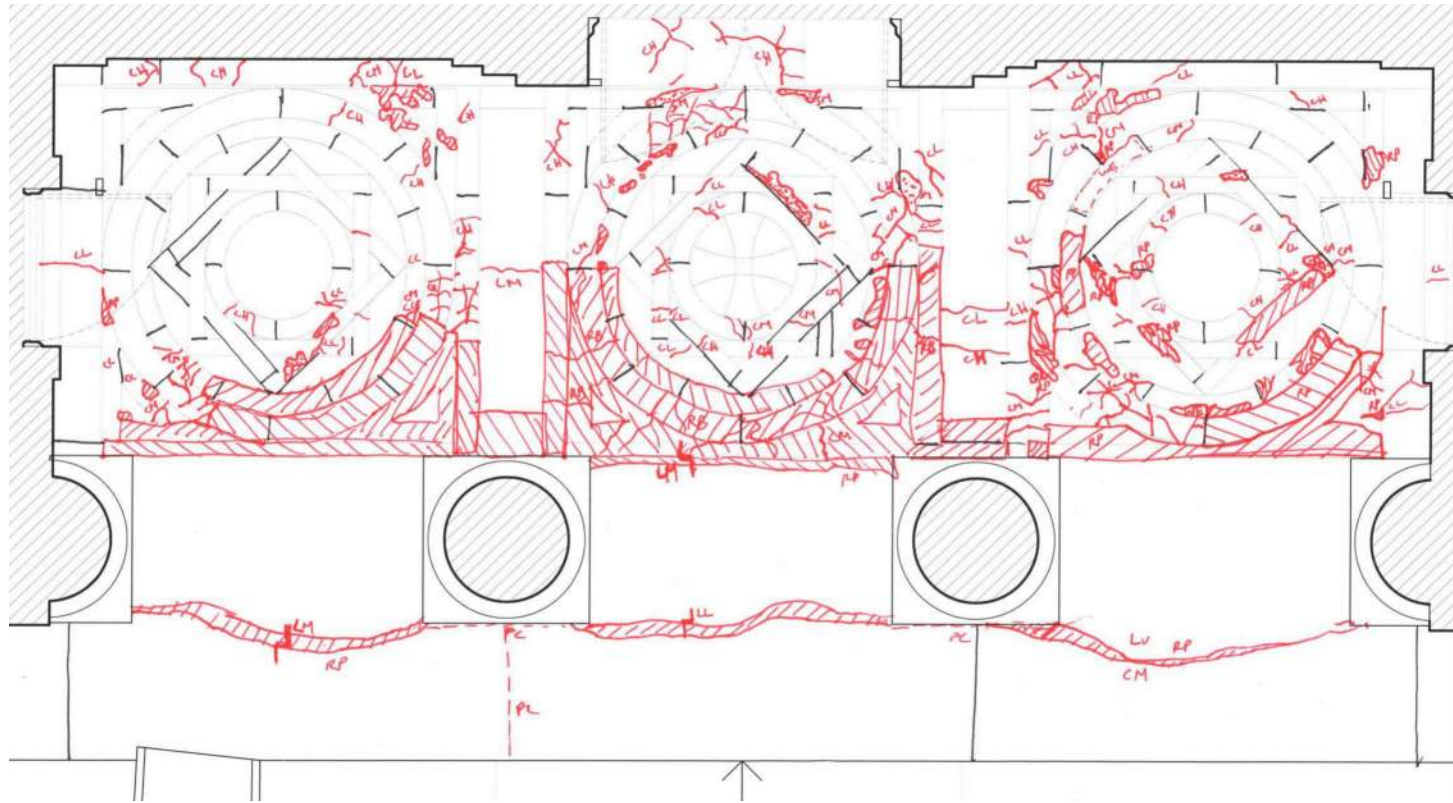
# ST. PAUL'S EXISTING CONDITIONS

WALTER B. MELVIN ARCHITECTS  
KRISTA BENTSON LANDSCAPE ARCHITECTURE

COLUMBIA UNIVERSITY - ST. PAUL'S CHAPEL  
1160 AMSTERDAM AVENUE, NY, NY

LANDMARKS PRESERVATION COMMISSION





PORTICO PAVING SURVEY



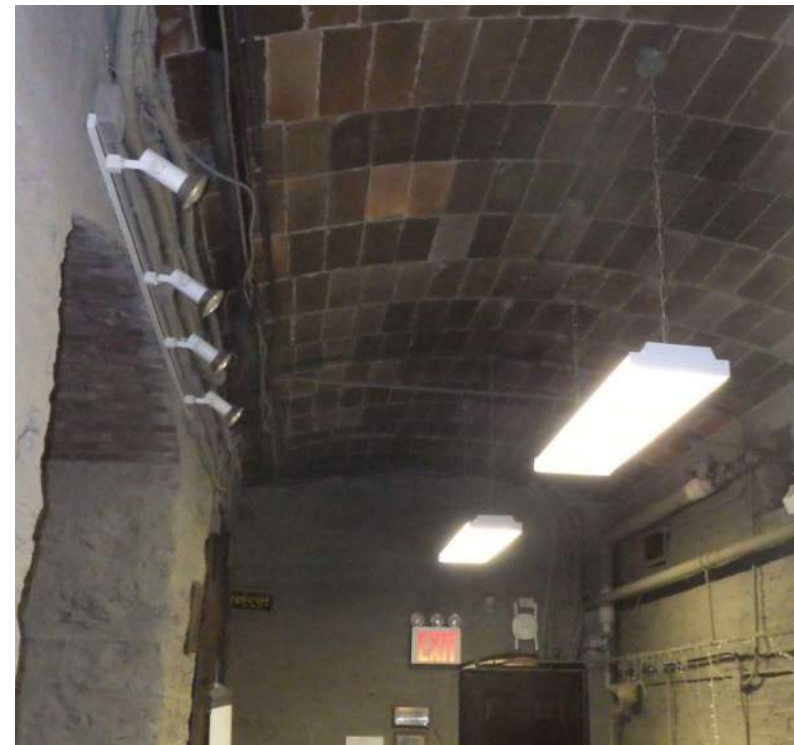
PORTICO PAVING LOOKING NORTH



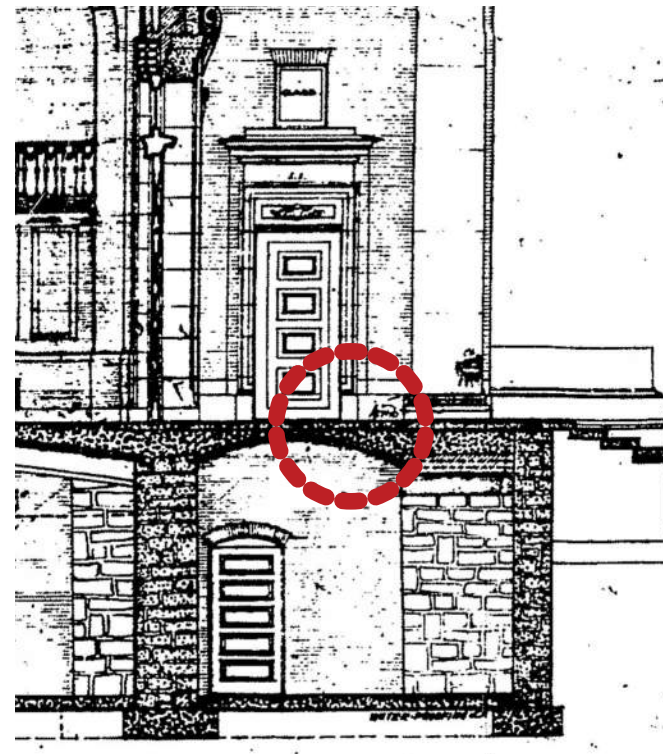
PORTICO PAVING PROBE

## PORTICO & STEP ISSUES

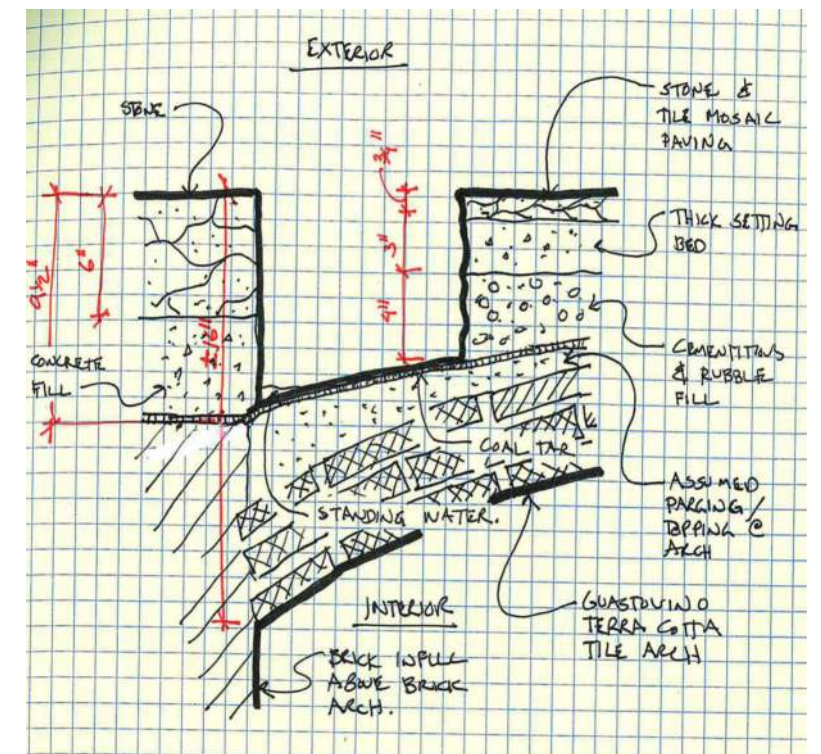
- Mosaic and Landing Stone Badly Heaved/Damaged
- Intact Waterproofing Vault
- Water Buildup at Subsurface Slopes
- Freeze-Thaw Cracking of Stone and Mosaic



VAULT INTERIOR BELOW PORTICO



ORIGINAL PORTICO SECTION



PROBE SECTION SKETCH

# ST. PAUL'S EXISTING CONDITIONS - PORTICO PAVING

WALTER B. MELVIN ARCHITECTS  
KRISTA BENTSON LANDSCAPE ARCHITECTURE

COLUMBIA UNIVERSITY - ST. PAUL'S CHAPEL  
1160 AMSTERDAM AVENUE, NY, NY

LANDMARKS PRESERVATION COMMISSION

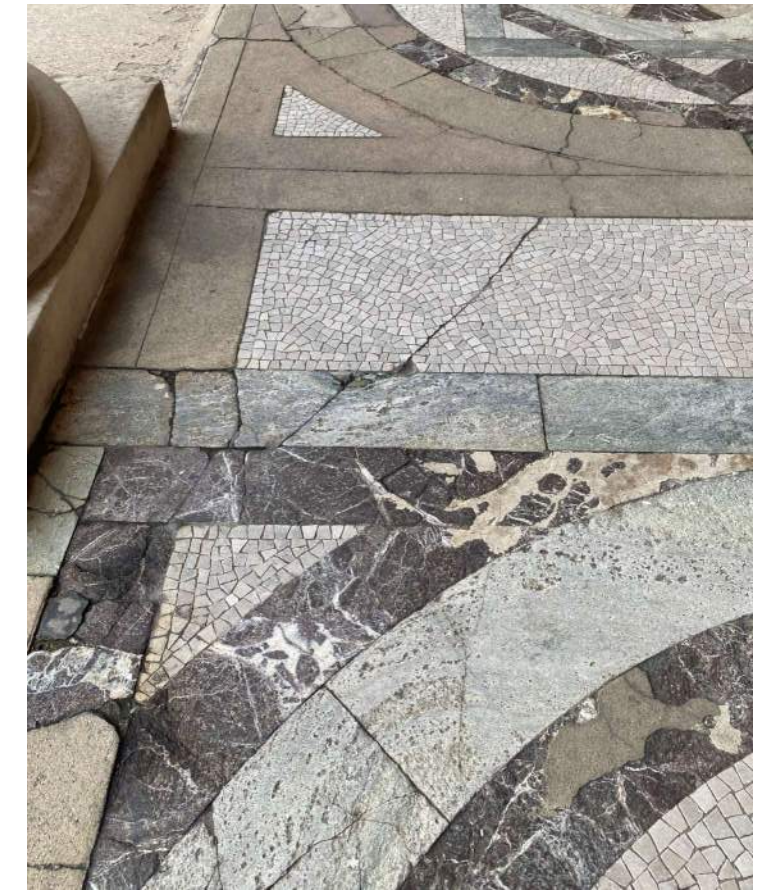




LOOKING SOUTH - DAMAGED AND REPLACED PAVING



CENTER BAY MISSING STONE REPLACED WITH CEMENTITIOUS FILL



CENTER AND NORTHERN BAY WITH BADLY DAMAGED AND REPLACED STONE



SOUTHERN BAY WITH BADLY DAMAGED AND REPLACED STONE



SOUTHERN BAY WITH BADLY DAMAGED AND REPLACED STONE

## ST. PAUL'S EXISTING CONDITIONS - PORTICO PAVING

WALTER B. MELVIN ARCHITECTS  
KRISTA BENTSON LANDSCAPE ARCHITECTURE

COLUMBIA UNIVERSITY ST. PAUL'S CHAPEL  
1160 AMSTERDAM AVENUE, NY, NY

LANDMARKS PRESERVATION COMMISSION





NORTH-SOUTH CRACK FULL LENGTH OF CHAPEL ENTRANCE STEPS.



OPEN BED JOINTS AT CHAPEL ENTRANCE STEPS.



PARGED FILLET AT CHAPEL ENTRANCE STEPS

## ST. PAUL'S EXISTING CONDITIONS - PORTICO STAIRS

WALTER B. MELVIN ARCHITECTS  
KRISTA BENTSON LANDSCAPE ARCHITECTURE

COLUMBIA UNIVERSITY ST. PAUL'S CHAPEL  
1160 AMSTERDAM AVENUE, NY, NY

LANDMARKS PRESERVATION COMMISSION





BRICK PAVERS - GROUTED METAL SOCKET



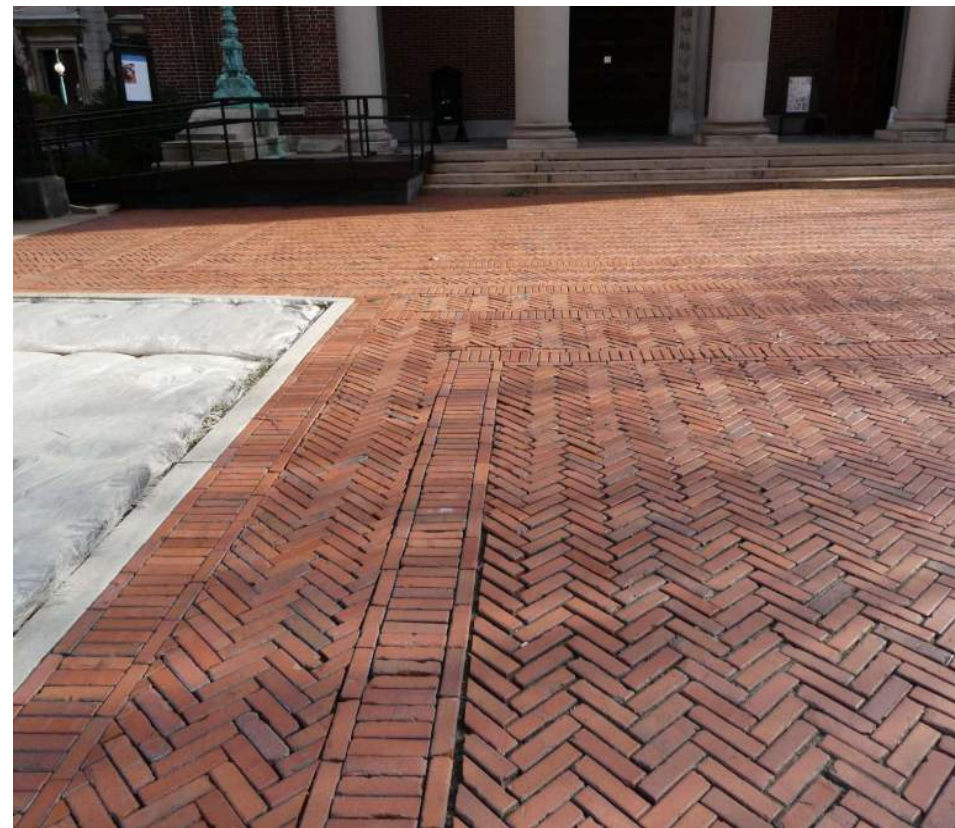
PLAZA AT EXISTING RAMP WITH HEAVING AND ERODED JOINTS.



BRICK PAVERS - CRACKED BRICK, HEAVING AND ERODED JOINTS

## PLAZA ISSUES

- Brick Pavers Sand-Set and Heaving
- Pervious Paving no Drains



PLAZA LOOKING EAST WITH HEAVING AND ERODED JOINTS.



SOUTHEAST CORNER WITH HEAVING AND ERODED JOINTS.

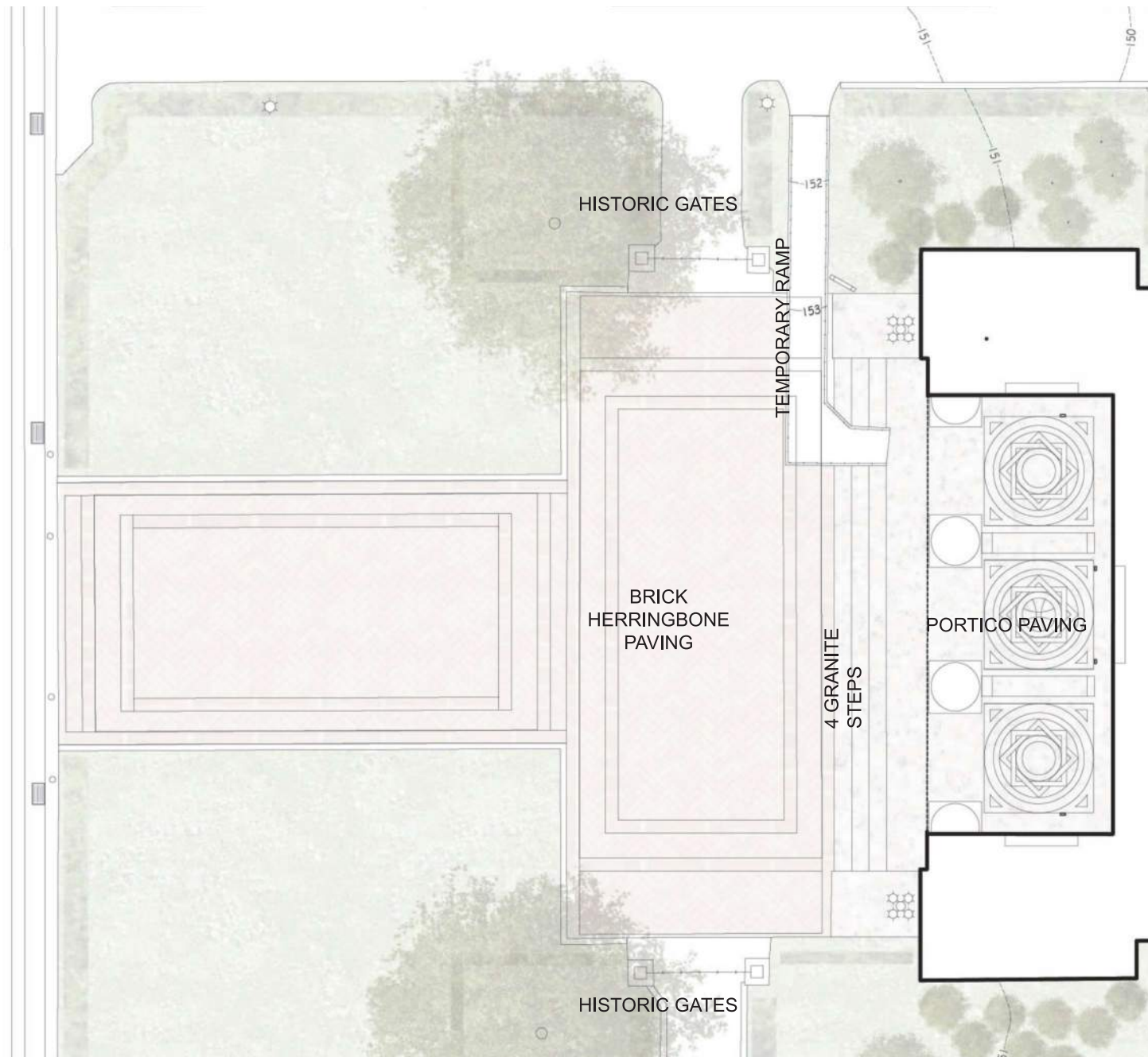
# ST. PAUL'S EXISTING CONDITIONS - WEST PLAZA

WALTER B. MELVIN ARCHITECTS  
KRISTA BENTSON LANDSCAPE ARCHITECTURE

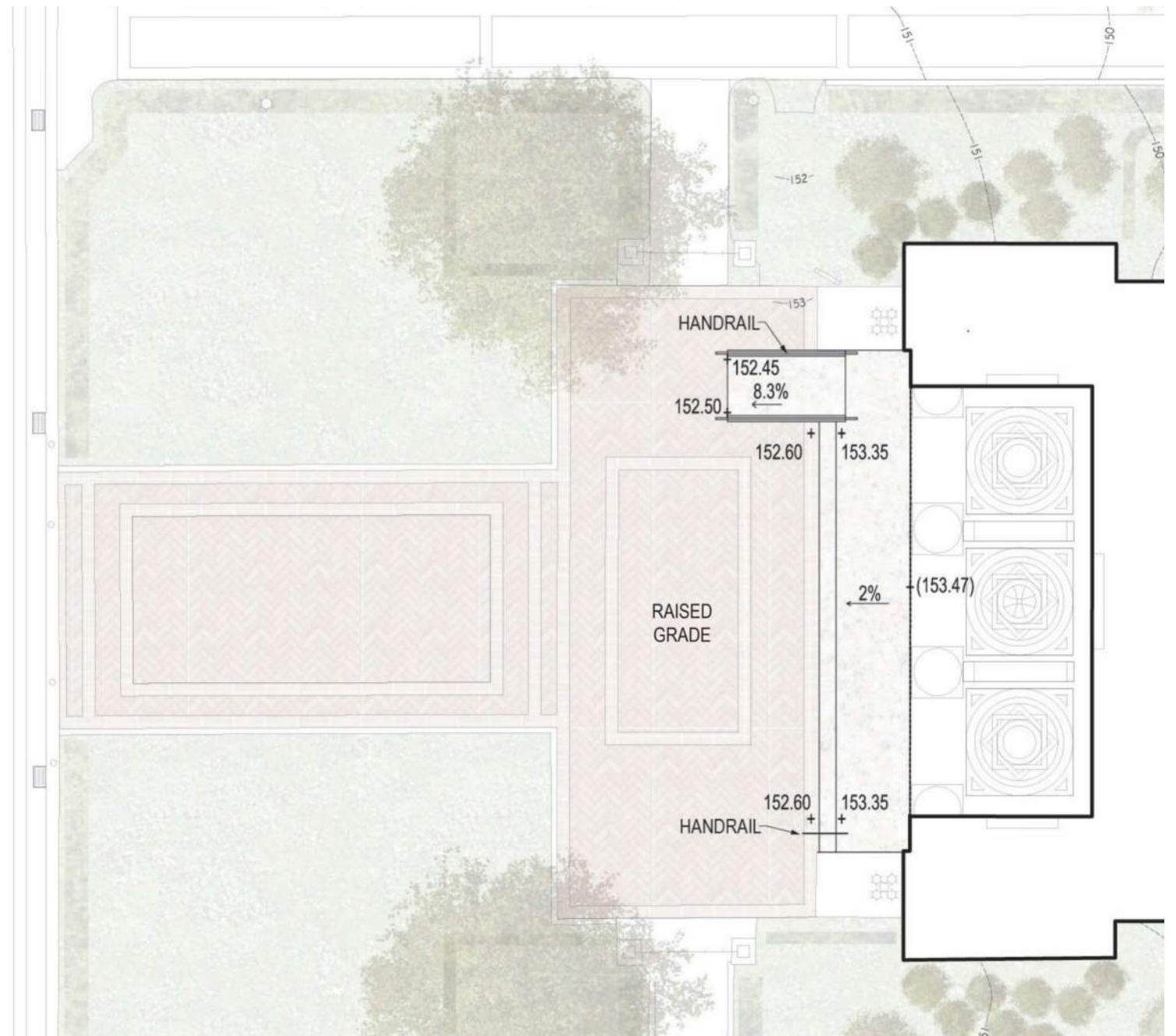
COLUMBIA UNIVERSITY - ST. PAUL'S CHAPEL  
1160 AMSTERDAM AVENUE, NY, NY

LANDMARKS PRESERVATION COMMISSION





EXISTING



PROPOSED:  
MINIMAL RAMP WITH RAISED PLAZA

Benefits:

- Similar entry approach by all
- Shortest ramp possible
- Minimal handrails for those requiring support

## ST. PAUL'S CHAPEL ENTRANCE - EXISTING & PROPOSED





EXISTING



PROPOSED

## ST. PAUL'S CHAPEL ENTRANCE - EXISTING & PROPOSED

WALTER B. MELVIN ARCHITECTS  
KRISTA BENTSON LANDSCAPE ARCHITECTURE

COLUMBIA UNIVERSITY - ST. PAUL'S CHAPEL  
1160 AMSTERDAM AVENUE, NY, NY

LANDMARKS PRESERVATION COMMISSION





EXISTING



PROPOSED

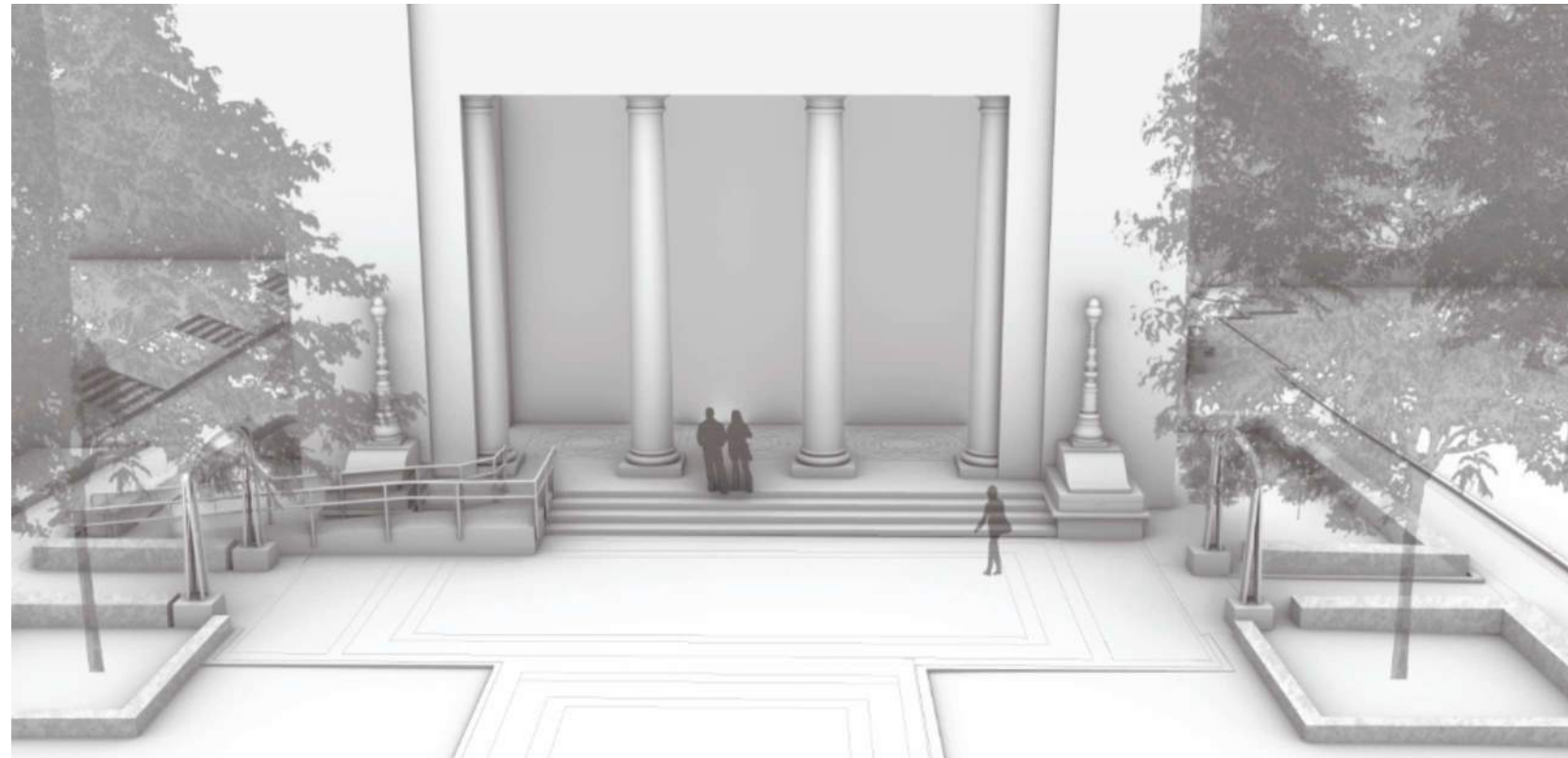
## ST. PAUL'S CHAPEL ENTRANCE - EXISTING & PROPOSED

WALTER B. MELVIN ARCHITECTS  
KRISTA BENTSON LANDSCAPE ARCHITECTURE

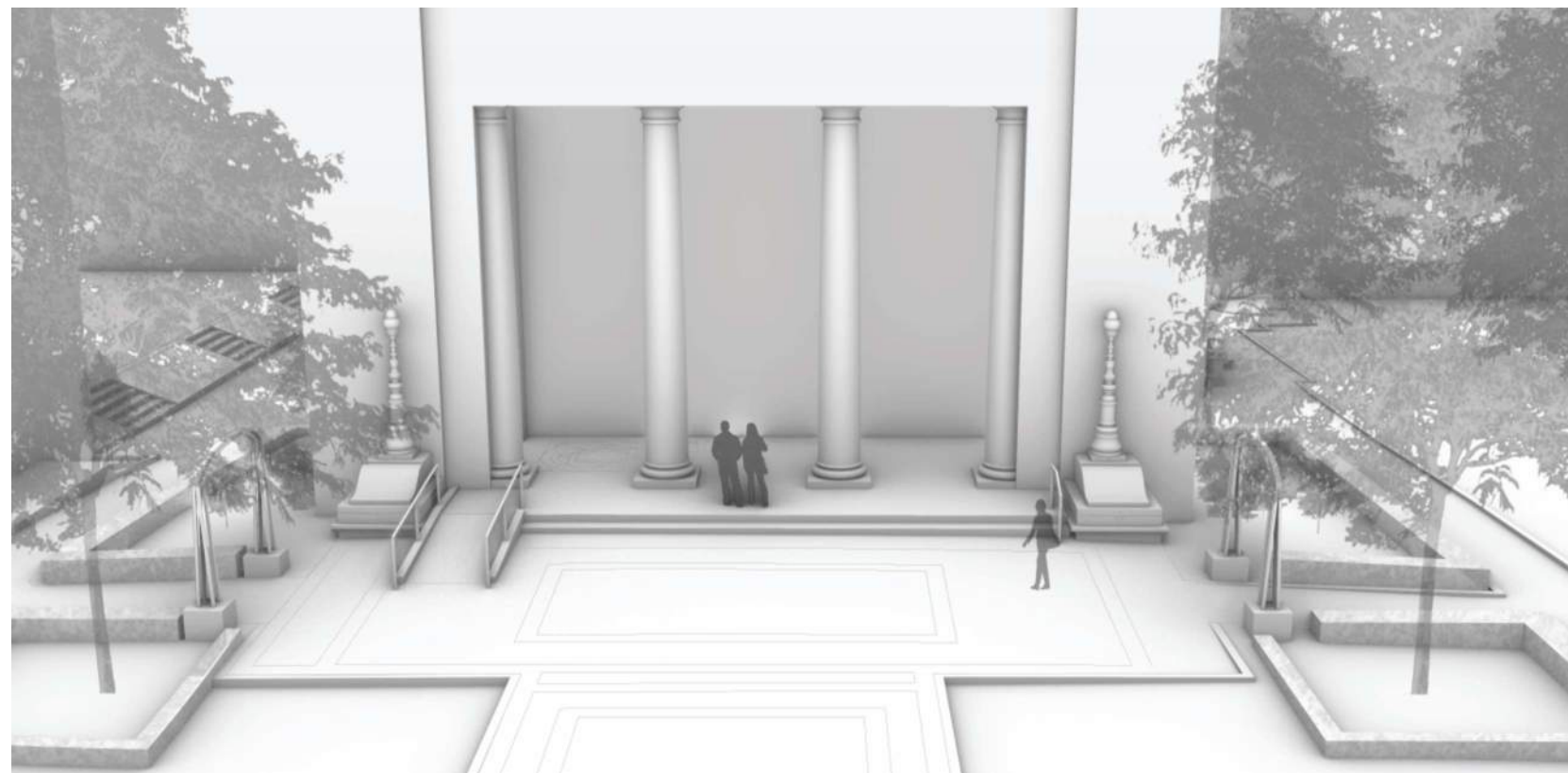
COLUMBIA UNIVERSITY - ST. PAUL'S CHAPEL  
1160 AMSTERDAM AVENUE, NY, NY

LANDMARKS PRESERVATION COMMISSION





EXISTING



PROPOSED

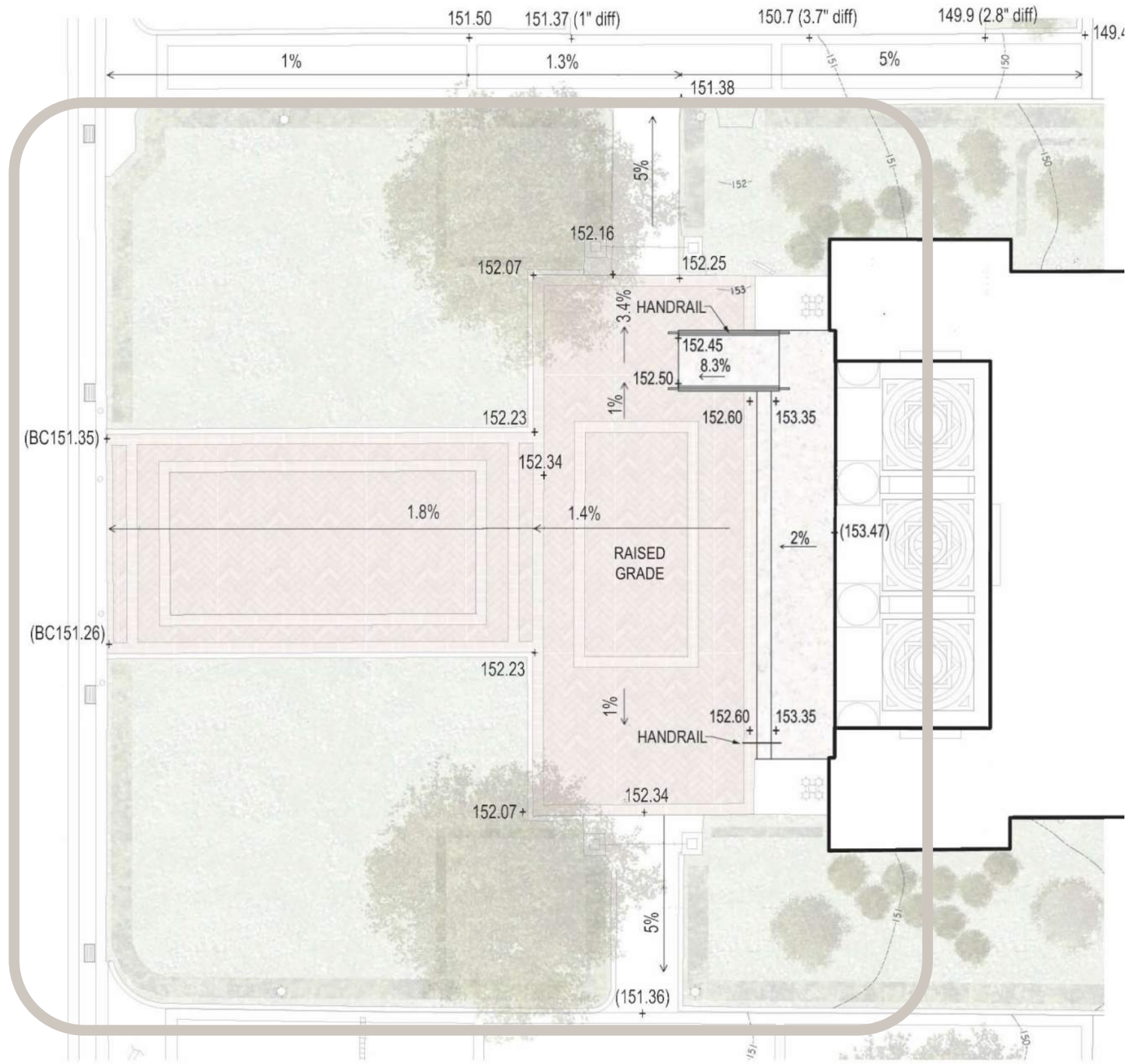
## ST. PAUL'S CHAPEL ENTRANCE - EXISTING & PROPOSED

WALTER B. MELVIN ARCHITECTS  
KRISTA BENTSON LANDSCAPE ARCHITECTURE

COLUMBIA UNIVERSITY - ST. PAUL'S CHAPEL  
1160 AMSTERDAM AVENUE, NY, NY

LANDMARKS PRESERVATION COMMISSION

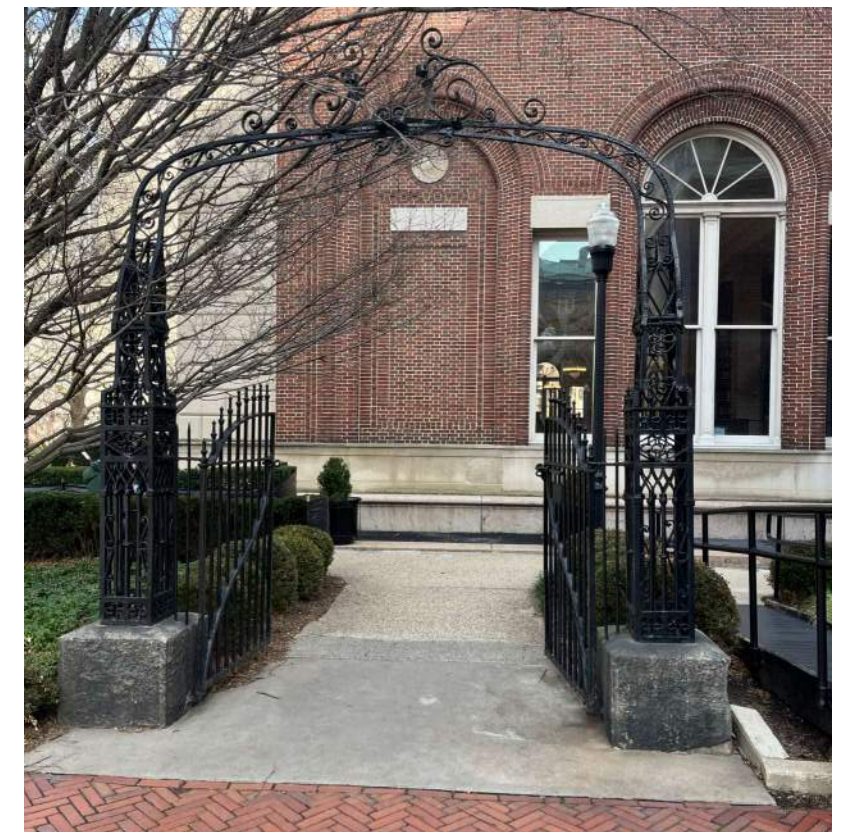




RECONSTRUCTED BRICK PAVING



ELEVATED PLAZA PAVING



RAISE HISTORIC GATES

# ST. PAUL'S CHAPEL ENTRANCE - PROPOSED SCHEMATIC GRADING

WALTER B. MELVIN ARCHITECTS  
KRISTA BENTSON LANDSCAPE ARCHITECTURE

COLUMBIA UNIVERSITY - ST. PAUL'S CHAPEL  
1160 AMSTERDAM AVENUE, NY, NY

LANDMARKS PRESERVATION COMMISSION





EXISTING CONDITIONS



PROPOSED

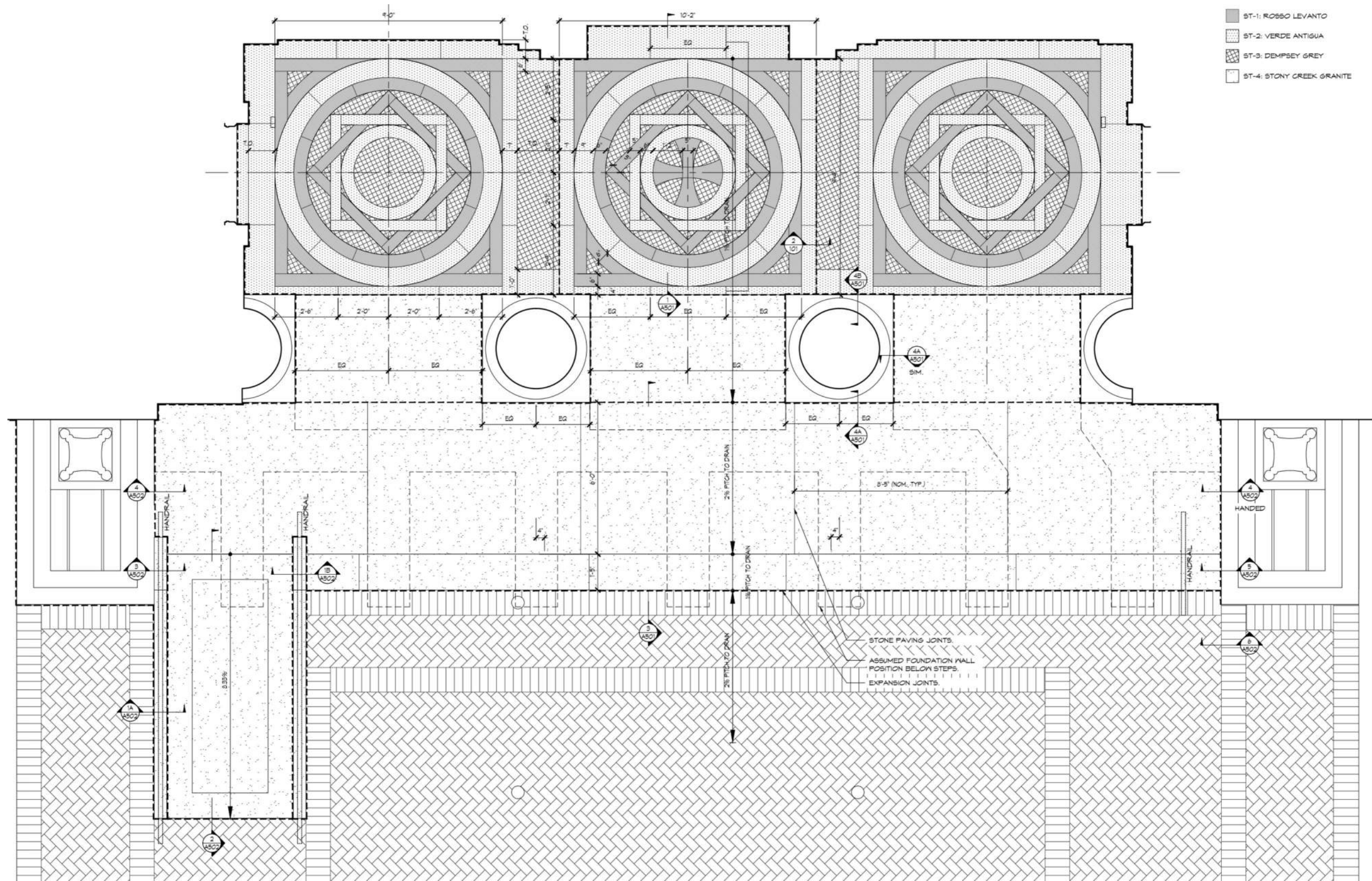
## ST. PAUL'S CHAPEL ENTRANCE - EXISTING & PROPOSED

WALTER B. MELVIN ARCHITECTS  
KRISTA BENTSON LANDSCAPE ARCHITECTURE

COLUMBIA UNIVERSITY - ST. PAUL'S CHAPEL  
1160 AMSTERDAM AVENUE, NY, NY

LANDMARKS PRESERVATION COMMISSION





PORTICO PAVING

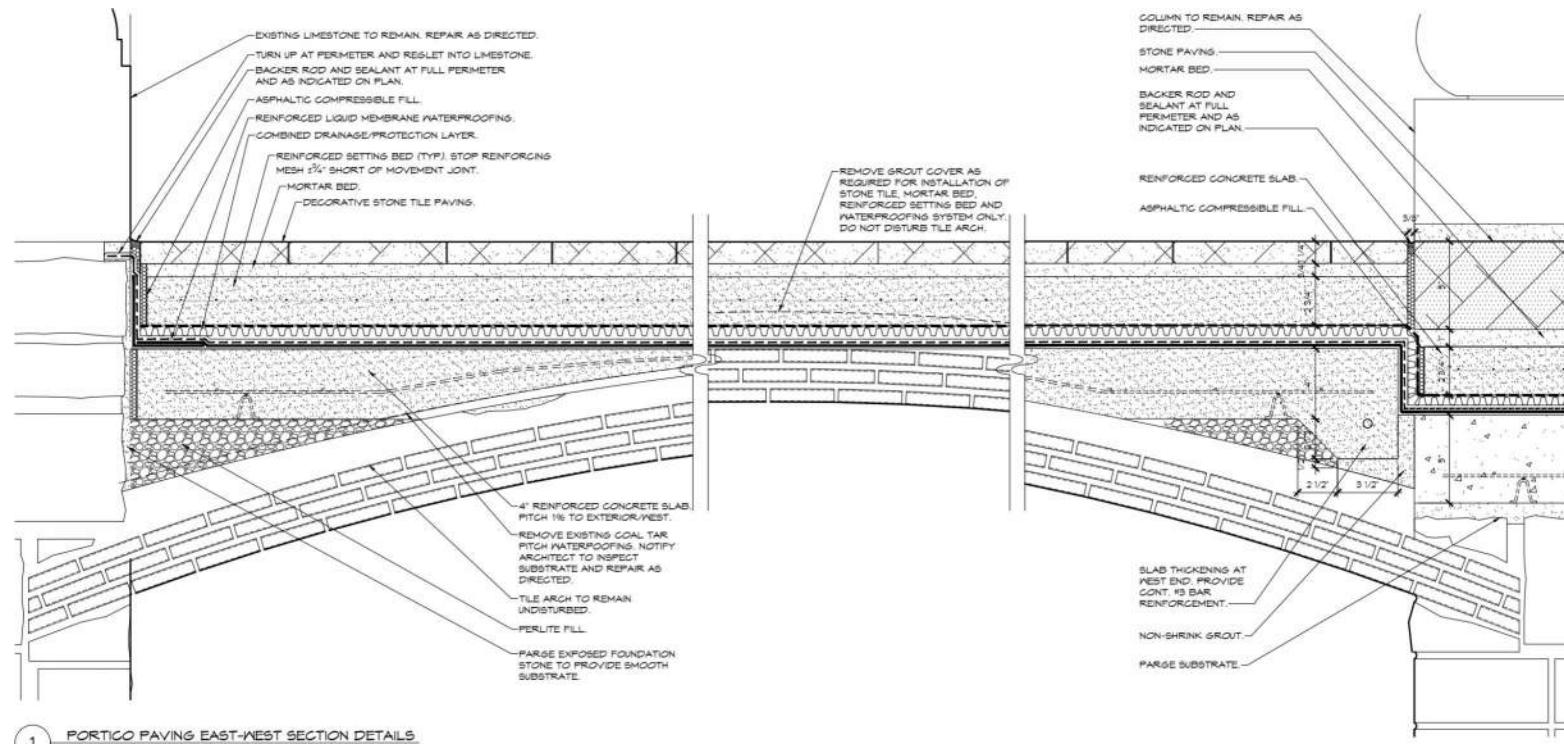
# ST. PAUL'S CHAPEL - CONSTRUCTION DRAWINGS

WALTER B. MELVIN ARCHITECTS  
KRISTA BENTSON LANDSCAPE ARCHITECTURE

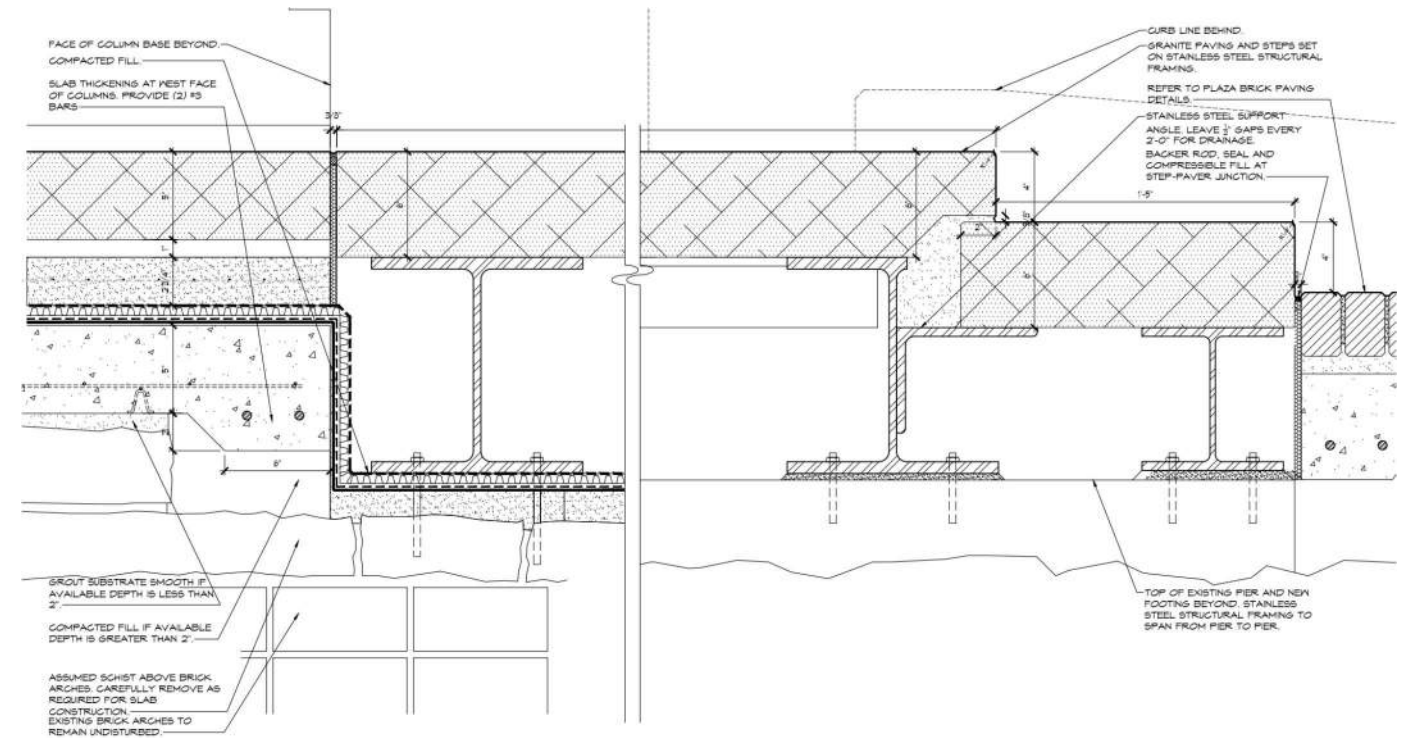
COLUMBIA UNIVERSITY - ST. PAUL'S CHAPEL  
1160 AMSTERDAM AVENUE, NY, NY

LANDMARKS PRESERVATION COMMISSION

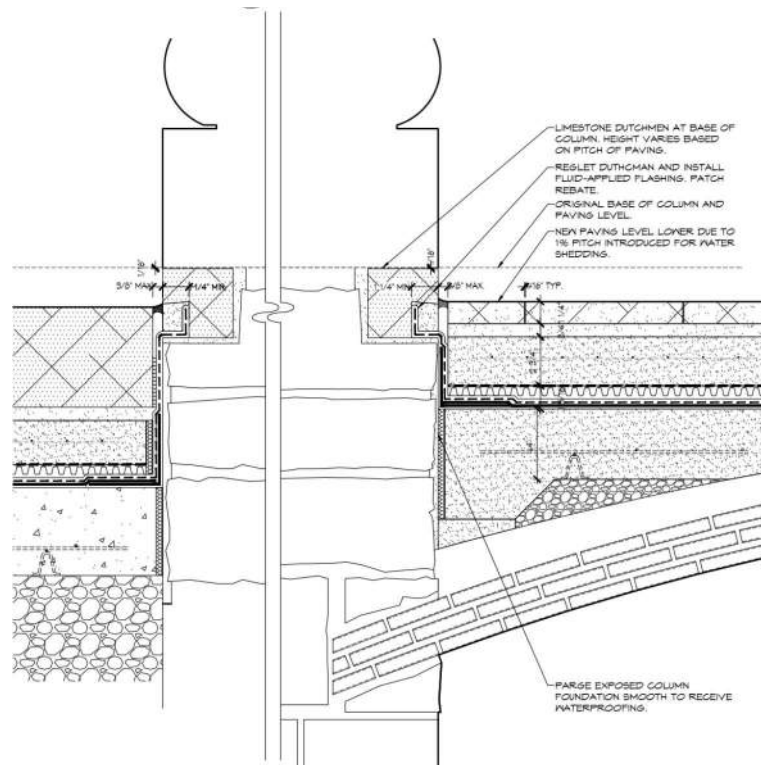




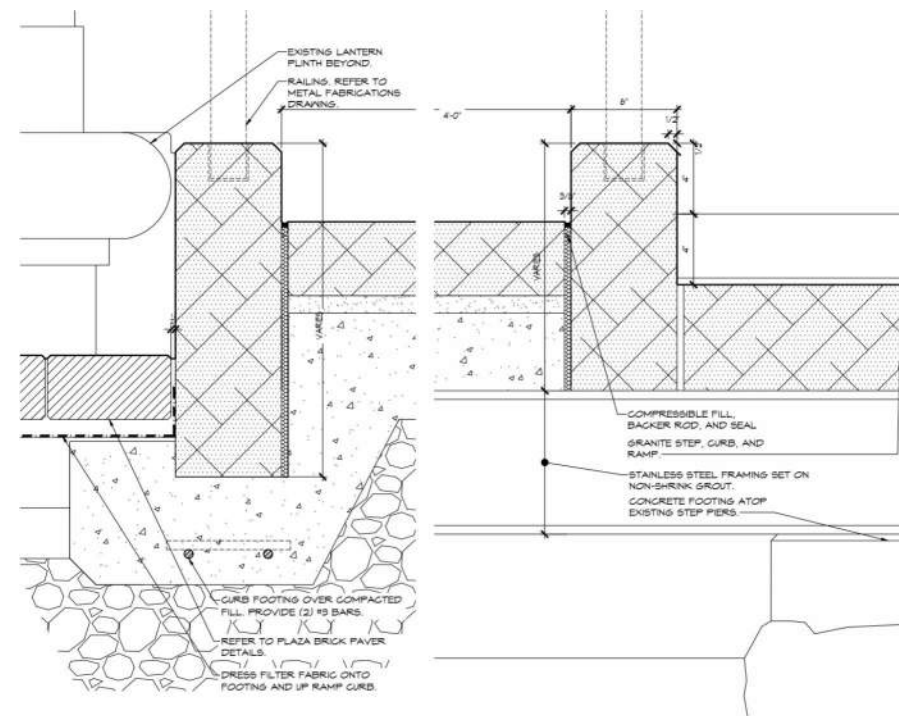
1 PORTICO PAVING EAST-WEST SECTION DETAILS  
SCALE 3" = 1'-0"



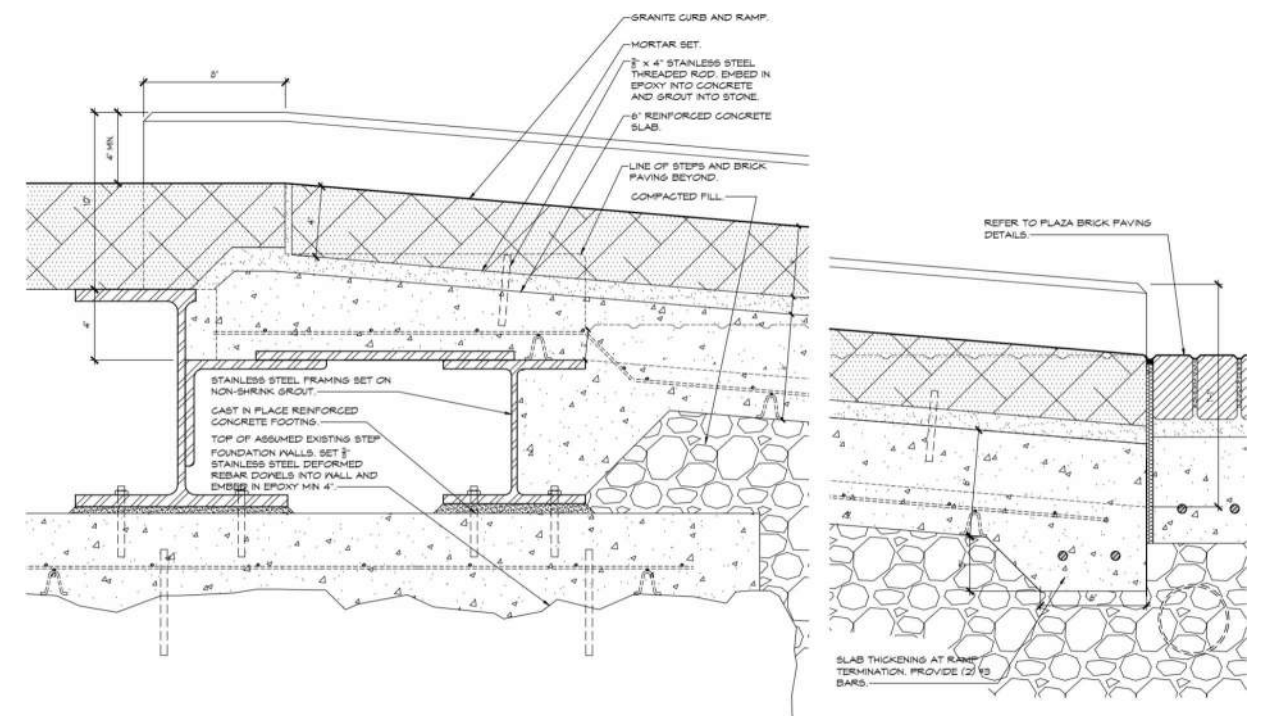
3 PORTICO LANDING AND STEPS EAST-WEST SECTION DETAILS  
SCALE 3" = 1'-0"



4 COLUMN BASE PERIMETER MOVEMENT JOINT SECTION DETAILS  
SCALE 3" = 1'-0"



1 PORTICO LANDING AND STEPS EAST-WEST SECTION DETAILS  
SCALE 3" = 1'-0"



2 PORTICO LANDING AND STEPS EAST-WEST SECTION DETAILS  
SCALE 3" = 1'-0"

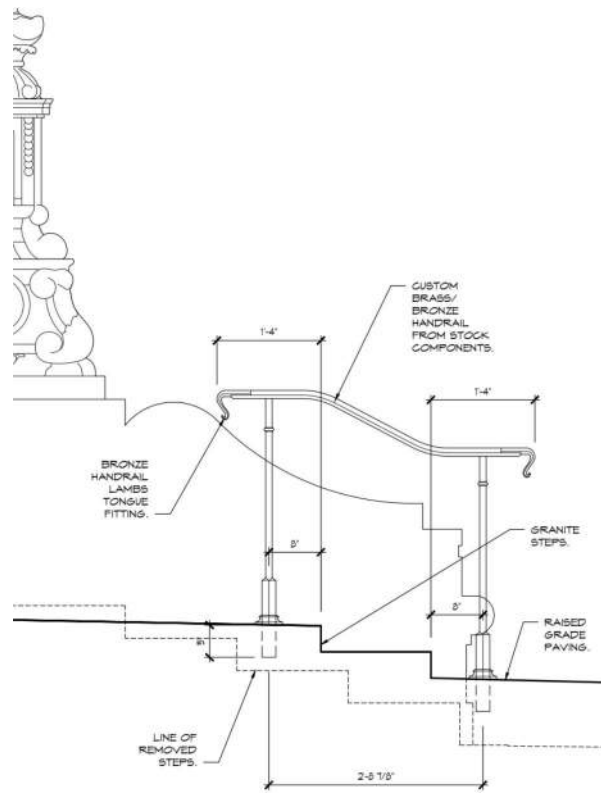
# ST. PAUL'S CHAPEL - CONSTRUCTION DRAWINGS

WALTER B. MELVIN ARCHITECTS  
KRISTA BENTSON LANDSCAPE ARCHITECTURE

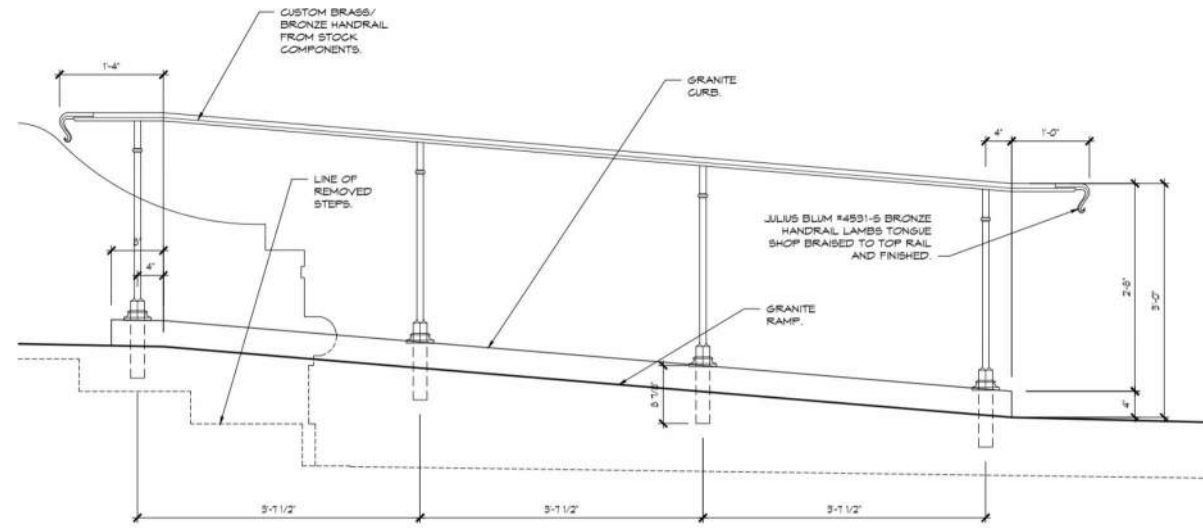
COLUMBIA UNIVERSITY - ST. PAUL'S CHAPEL  
1160 AMSTERDAM AVENUE, NY, NY

LANDMARKS PRESERVATION COMMISSION

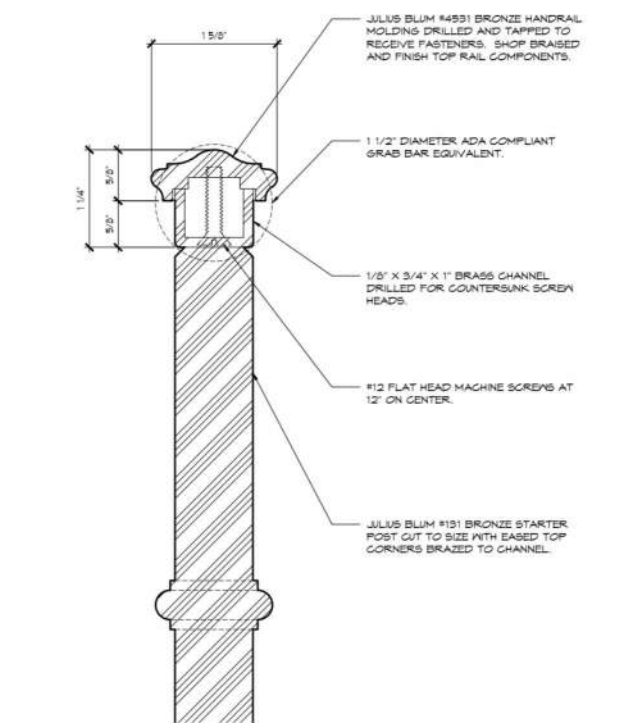




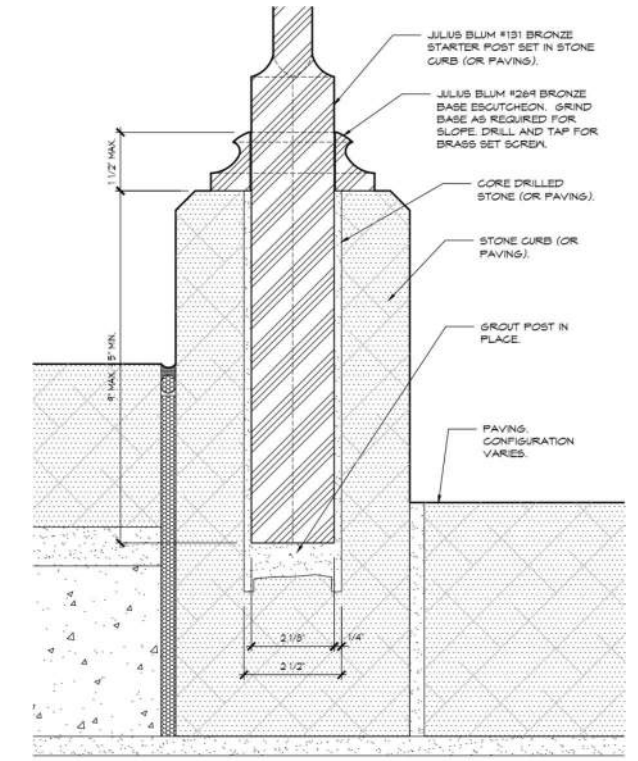
2 STAIR HANDRAIL SIDE ELEVATION  
SCALE: 1" = 1'-0"  
SCALE IN FEET



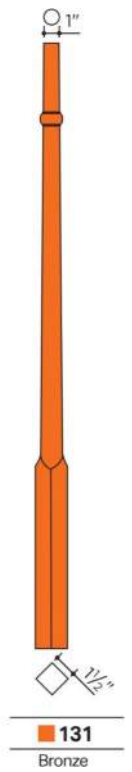
1 RAMP HANDRAIL SIDE ELEVATION  
SCALE: 1" = 1'-0"  
SCALE IN FEET



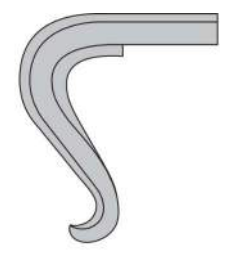
4 HANDRAIL RAIL & POST SECTION  
SCALE: 1/2" = 1'-0"  
SCALE IN INCHES



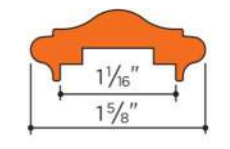
5 HANDRAIL POST EMBEDMENT SECTION  
SCALE: 6" = 1'-0"  
SCALE IN INCHES



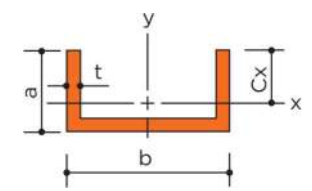
131 Bronze



S Straight Lamb's Tongue



4531 Bronze 1.93 lb/ft  
Fittings: B-C-CC-CL-CR-E-GL-GR-L-N-S-U-V



**BASES**

454

Aluminum	Bronze	Nickel-Silver	Hole	Width	Height
752	252	452	1/2"	1 1/4"	15/16"
753	253	453	5/8"	1 1/4"	15/16"
754	254	454	3/4"	1 3/8"	15/16"
767	267	467	1"	1 9/16"	1 1/16"
768	268	468	1 1/4"	2 3/4"	1 1/2"
769	269	479	1 1/2"	3"	1 1/2"

Square Hole

# ST. PAUL'S CHAPEL - CONSTRUCTION DRAWINGS - HANDRAIL COMPONENTS

WALTER B. MELVIN ARCHITECTS  
KRISTA BENTSON LANDSCAPE ARCHITECTURE

COLUMBIA UNIVERSITY - ST. PAUL'S CHAPEL  
1160 AMSTERDAM AVENUE, NY, NY

LANDMARKS PRESERVATION COMMISSION





ST. PAUL'S CHAPEL ENTRANCE:  
PORTICO PAVING

Stone Type 1:  
ROSSO LEVANTO

Marble

- Existing stone appears darker than the proposed replacement stone.
- Red marbles tend to weather to a dark brown.

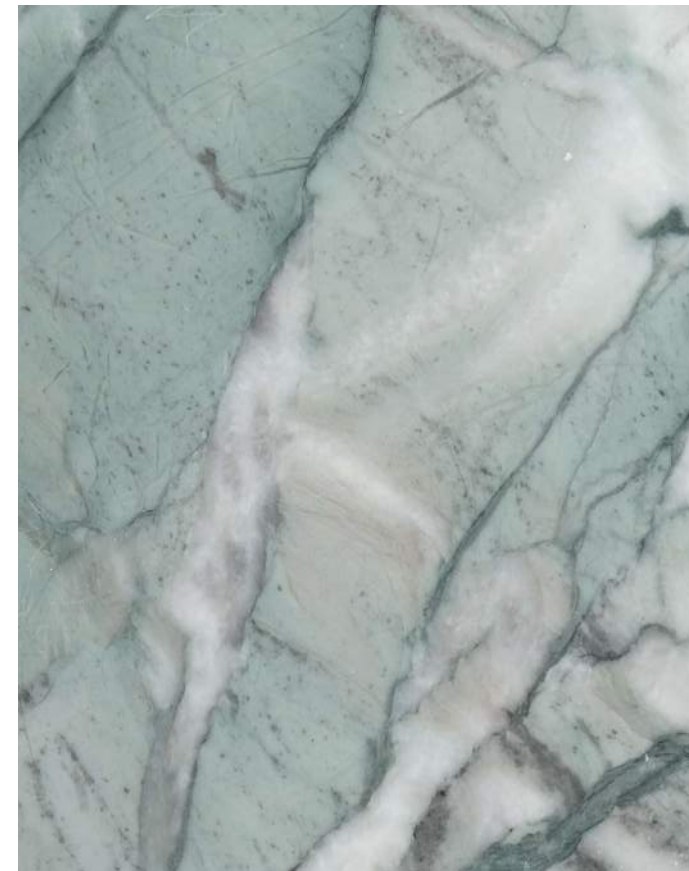
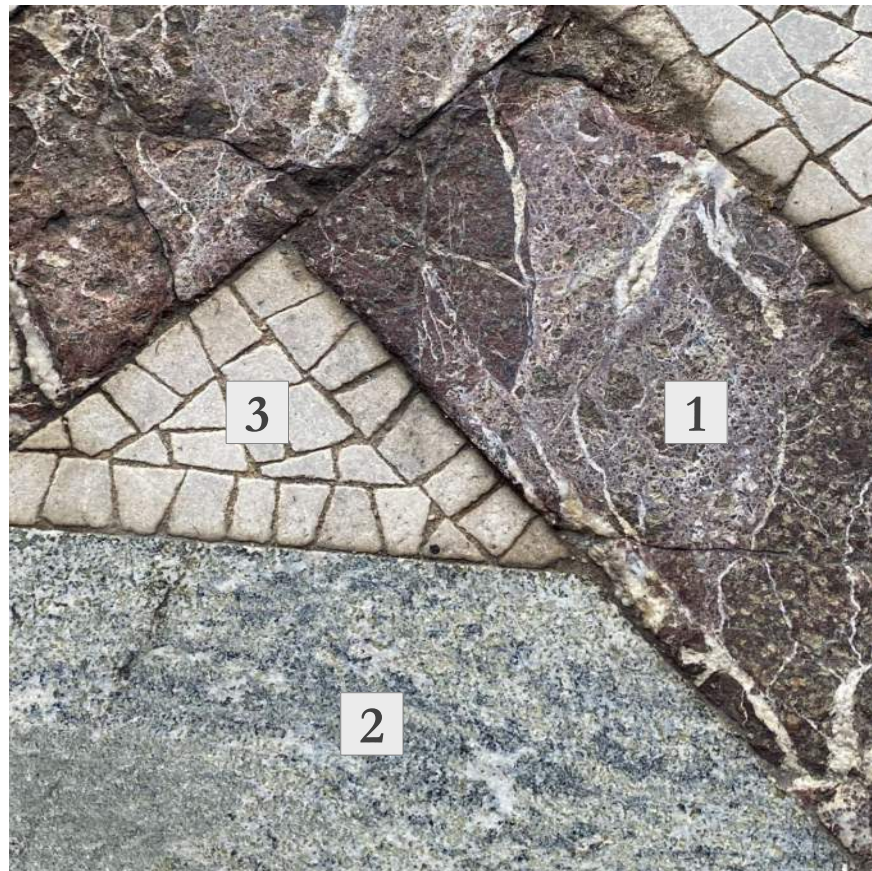
Stone Type 2:  
VERDE ANTIGUA/  
APIA VERDE

Serpentine

Stone Type 3:  
DEMPSEY GREY

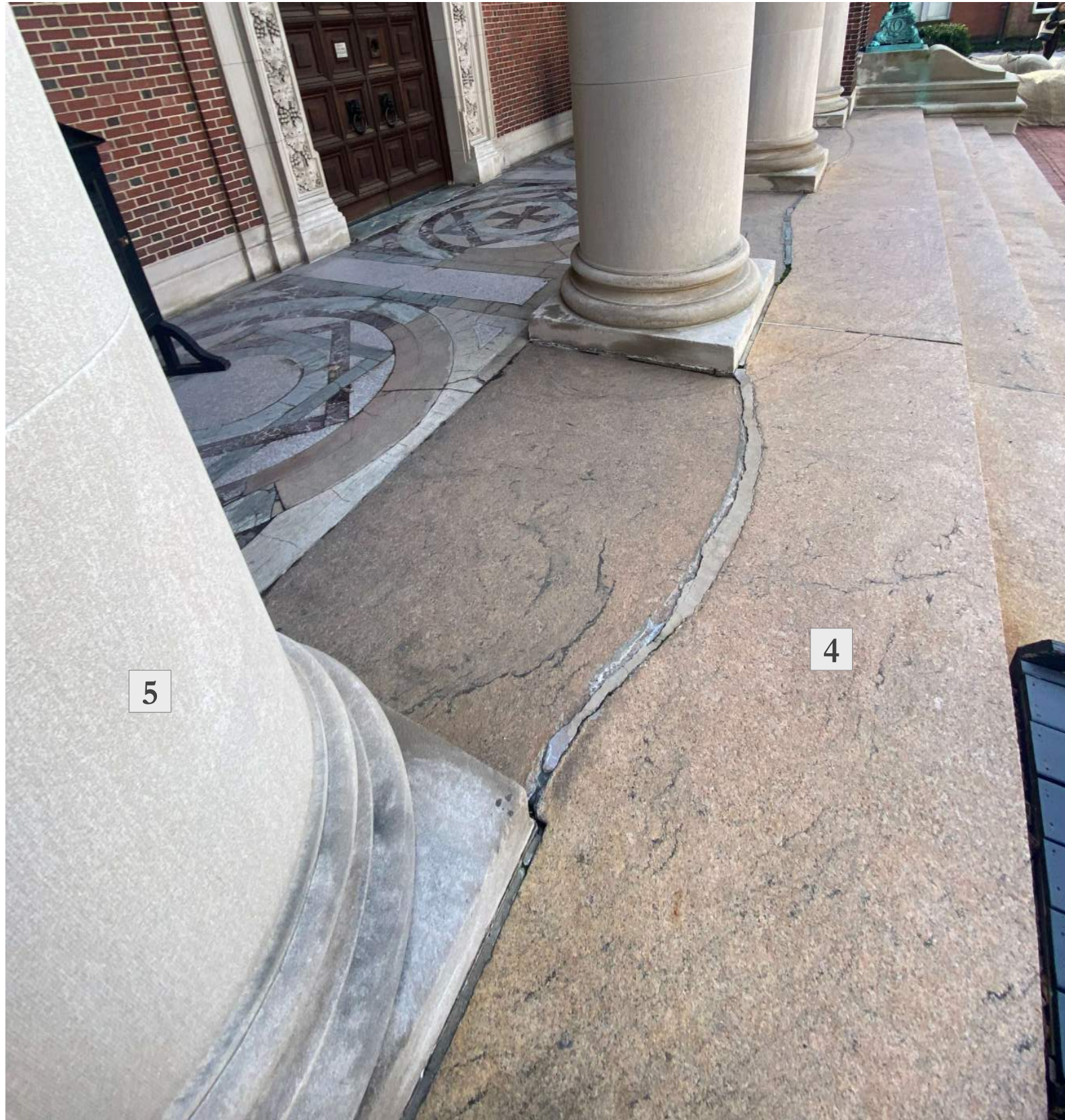
Dolomitic Limestone

- Pieced together in a mosaic



ST. PAUL'S CHAPEL - MATERIALS

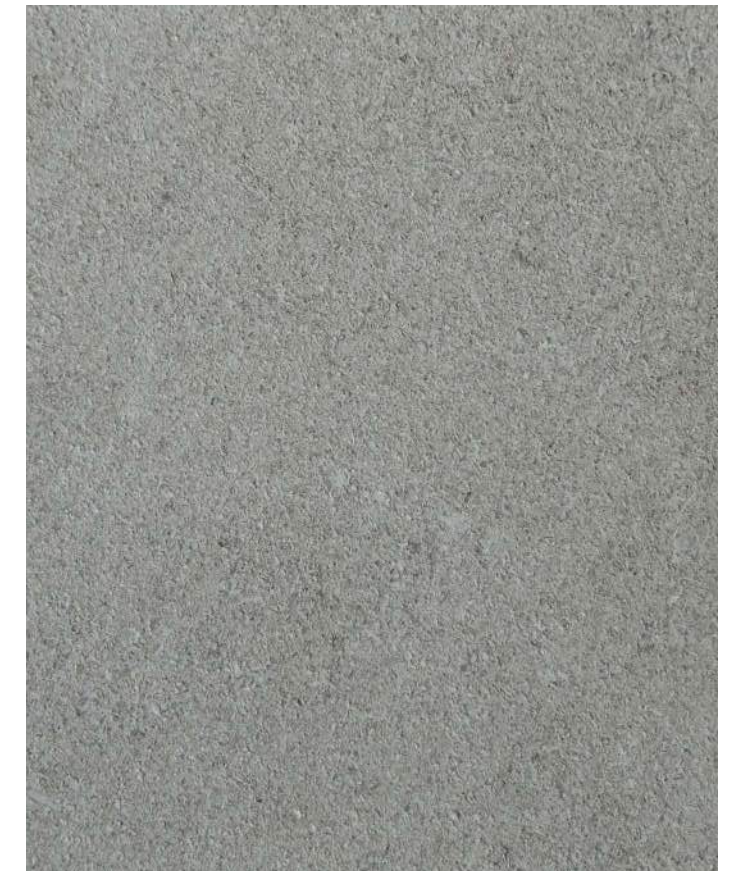
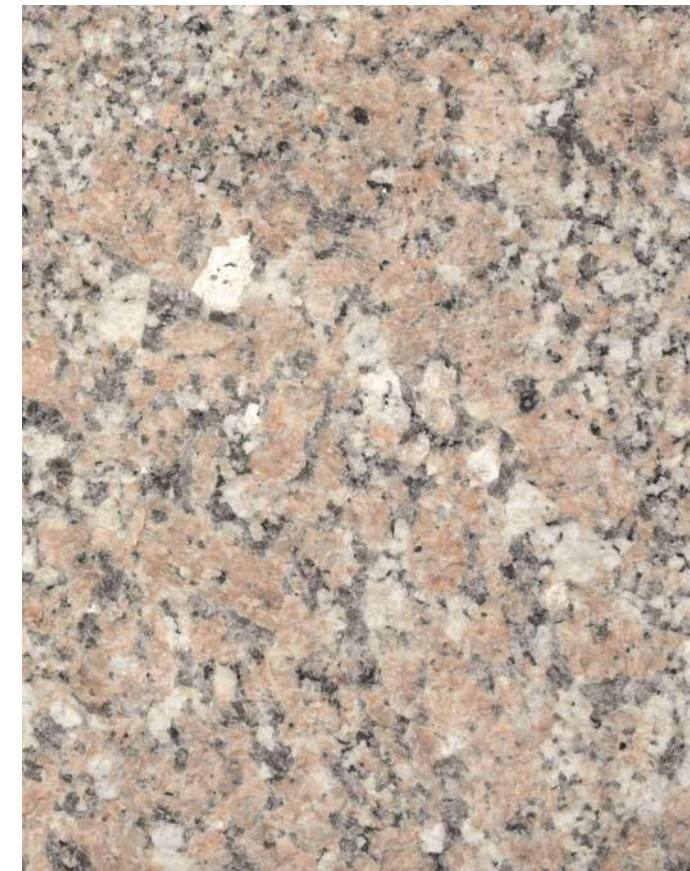




ST. PAUL'S CHAPEL ENTRANCE:  
STEPS, RAMP, AND CHAPEL BASE RESTORATION

Stone Type 4:  
STONY CREEK  
Granite

Stone Type 5:  
INDIANA LIMESTONE  
Limestone



## ST. PAUL'S CHAPEL - MATERIALS

WALTER B. MELVIN ARCHITECTS  
KRISTA BENTSON LANDSCAPE ARCHITECTURE

COLUMBIA UNIVERSITY - ST. PAUL'S CHAPEL  
1160 AMSTERDAM AVENUE, NY, NY

LANDMARKS PRESERVATION COMMISSION



September 24, 2024  
Public Hearing

The current proposal is:

Preservation Department – Item 8, LPC-25-00279

# 1160 Amsterdam Avenue – Saint Paul's Chapel – Individual Landmark Borough of Manhattan

To testify virtually, please join Zoom

**Webinar ID:** 852 4740 5541

**Passcode:** 410385

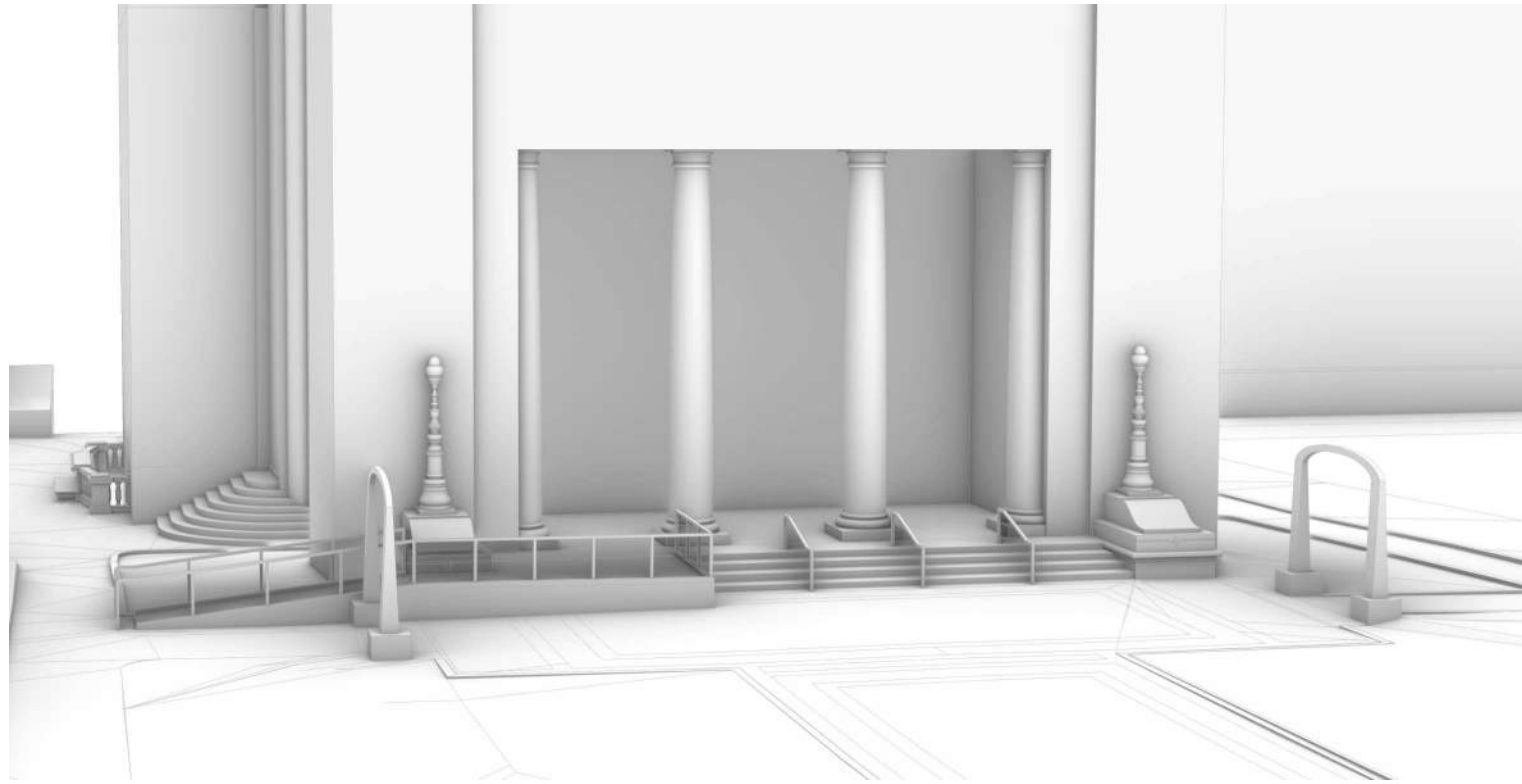
By Phone: 646-558-8656 (NY)

877-853-5257 (Toll free) US

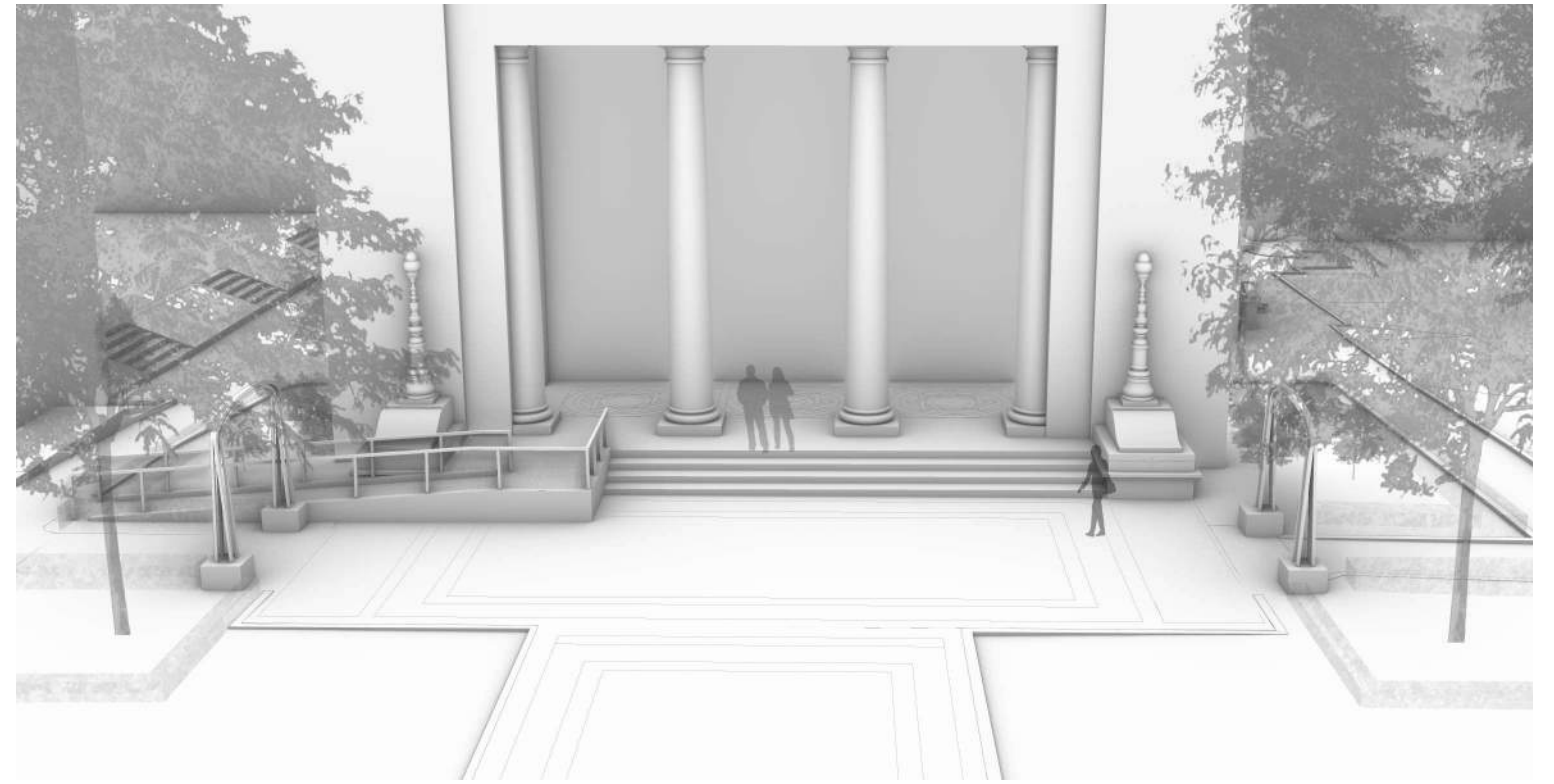
888-475-4499 (Toll free)

**Note:** If you want to testify virtually on an item, join the Zoom webinar at the agenda's "Be Here by" time (about an hour in advance). When the Chair indicates it's time to testify, "raise your hand" via the Zoom app if you want to speak (\*9 on the phone). Those who signed up in advance will be called first.

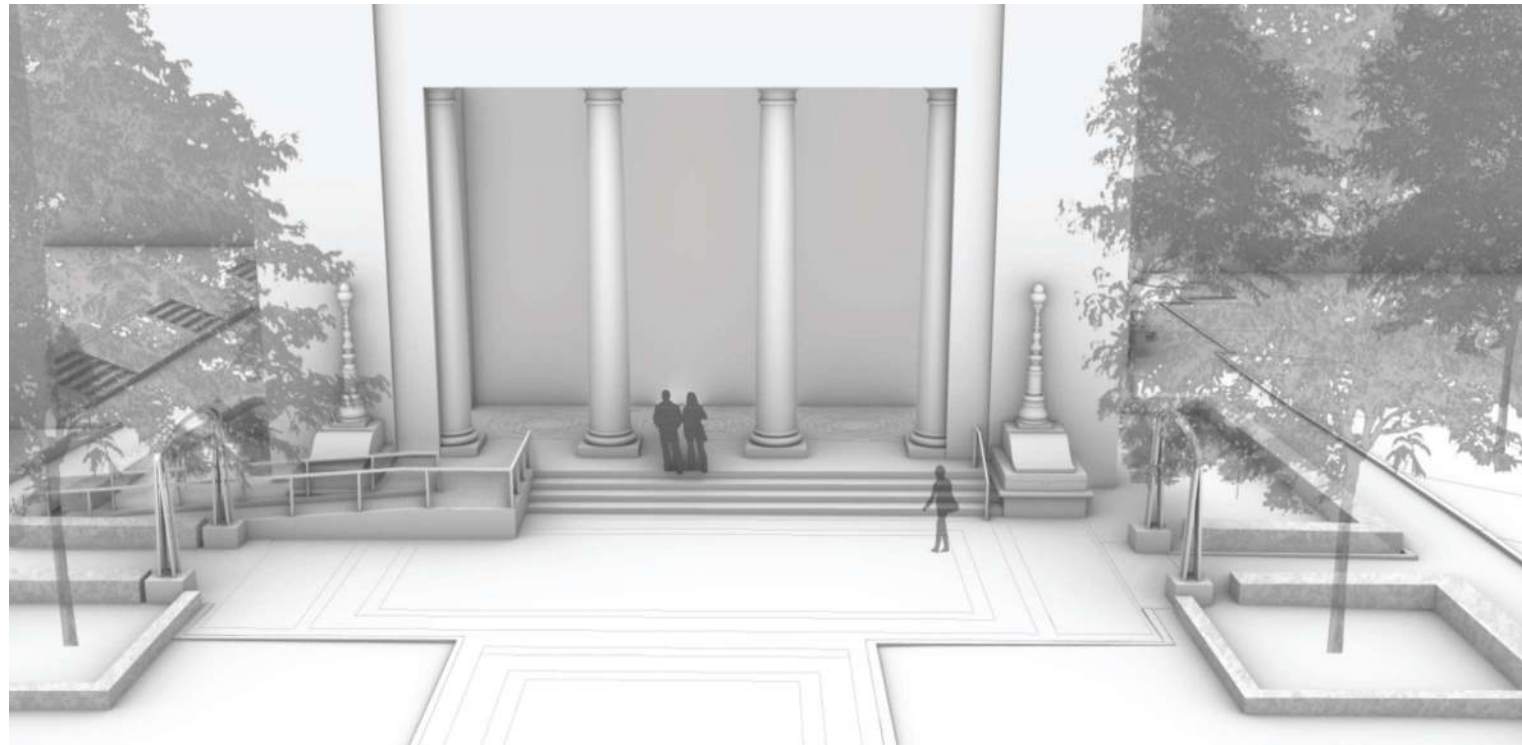




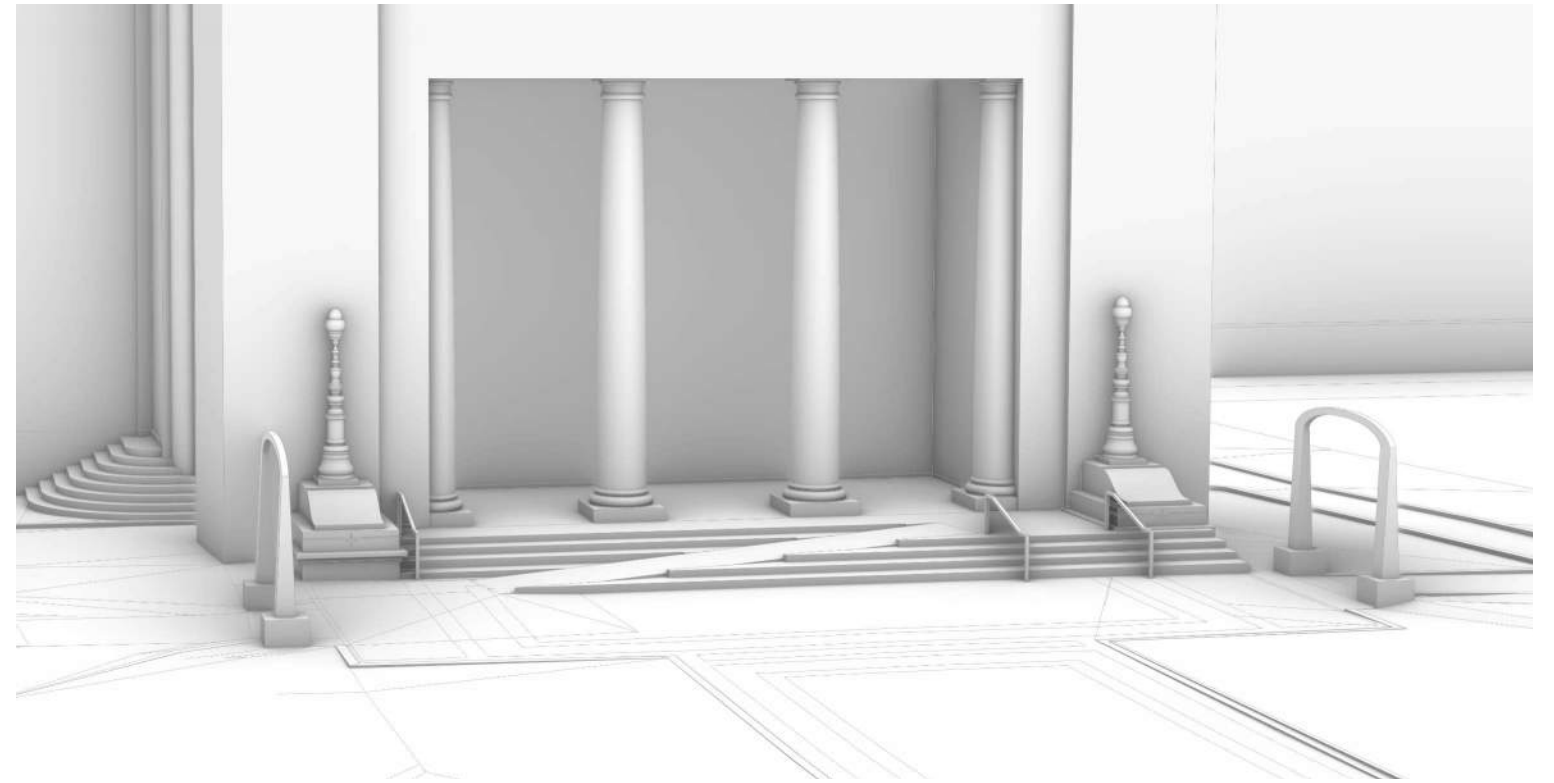
SCHEME #1



SCHEME #1.2



SCHEME #1.3



SCHEME #2

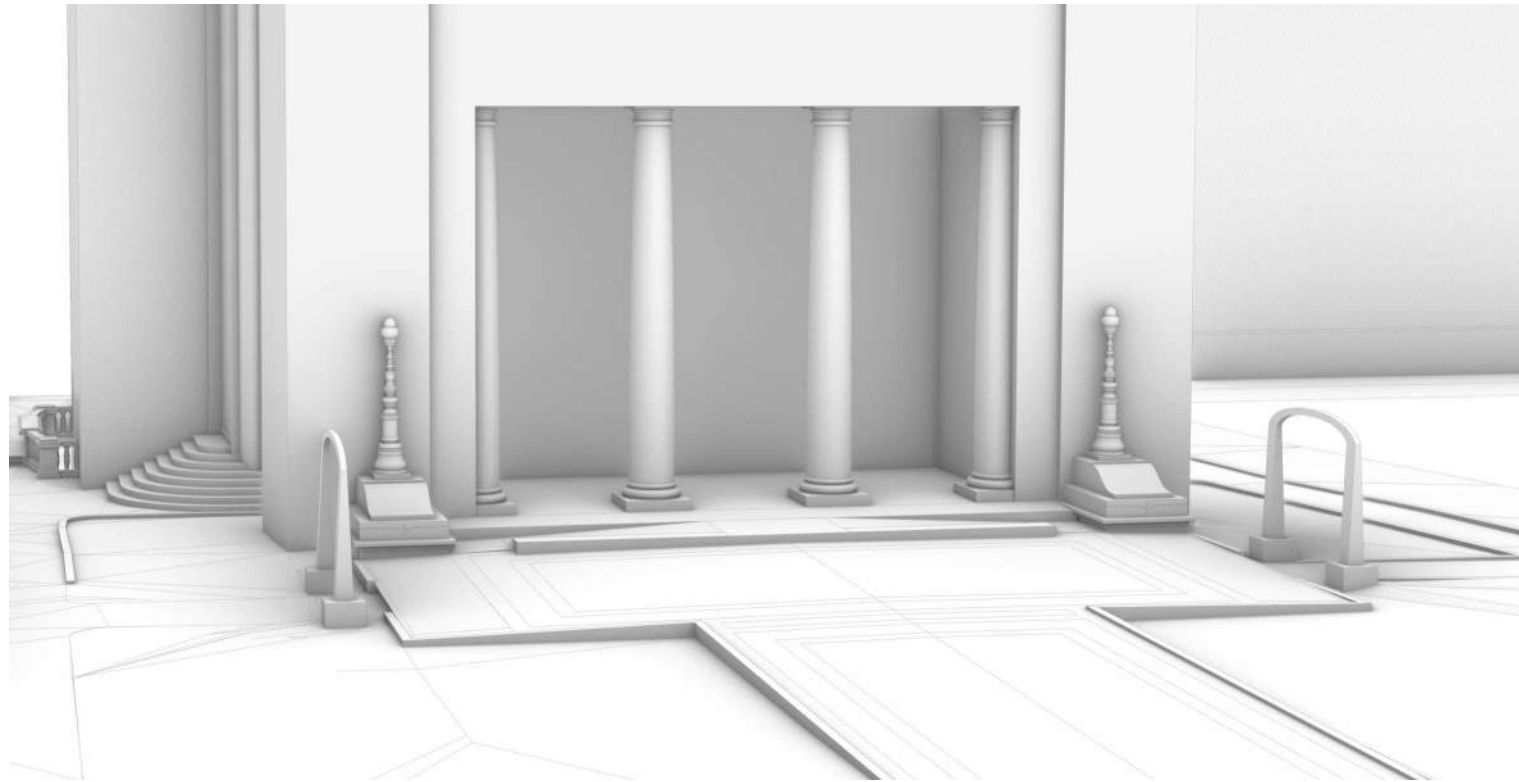
## ST. PAUL'S CHAPEL - APPENDIX: ALTERNATE UNSELECTED SCHEMES

WALTER B. MELVIN ARCHITECTS  
KRISTA BENTSON LANDSCAPE ARCHITECTURE

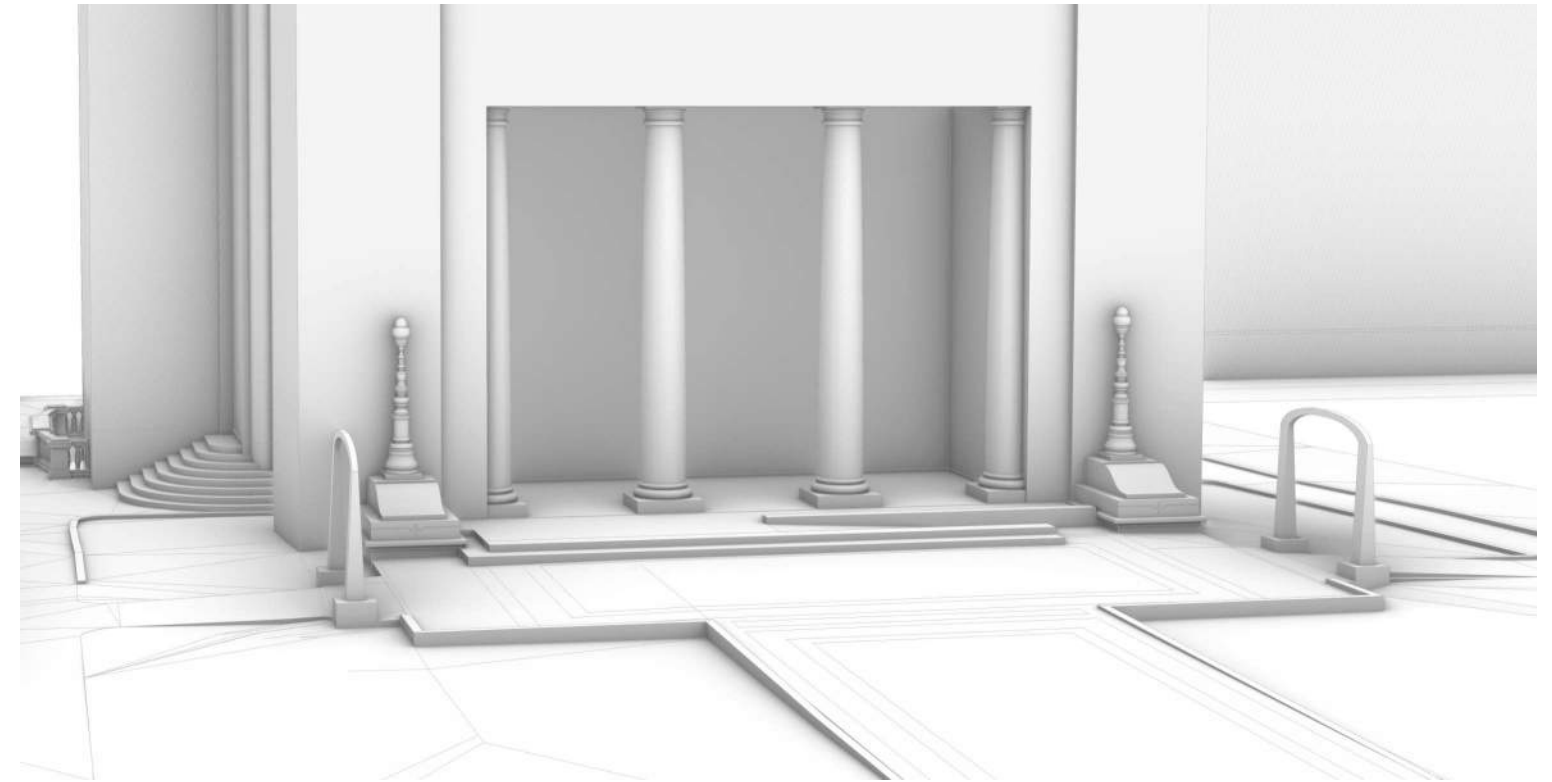
COLUMBIA UNIVERSITY - ST. PAUL'S CHAPEL  
1160 AMSTERDAM AVENUE, NY, NY

LANDMARKS PRESERVATION COMMISSION

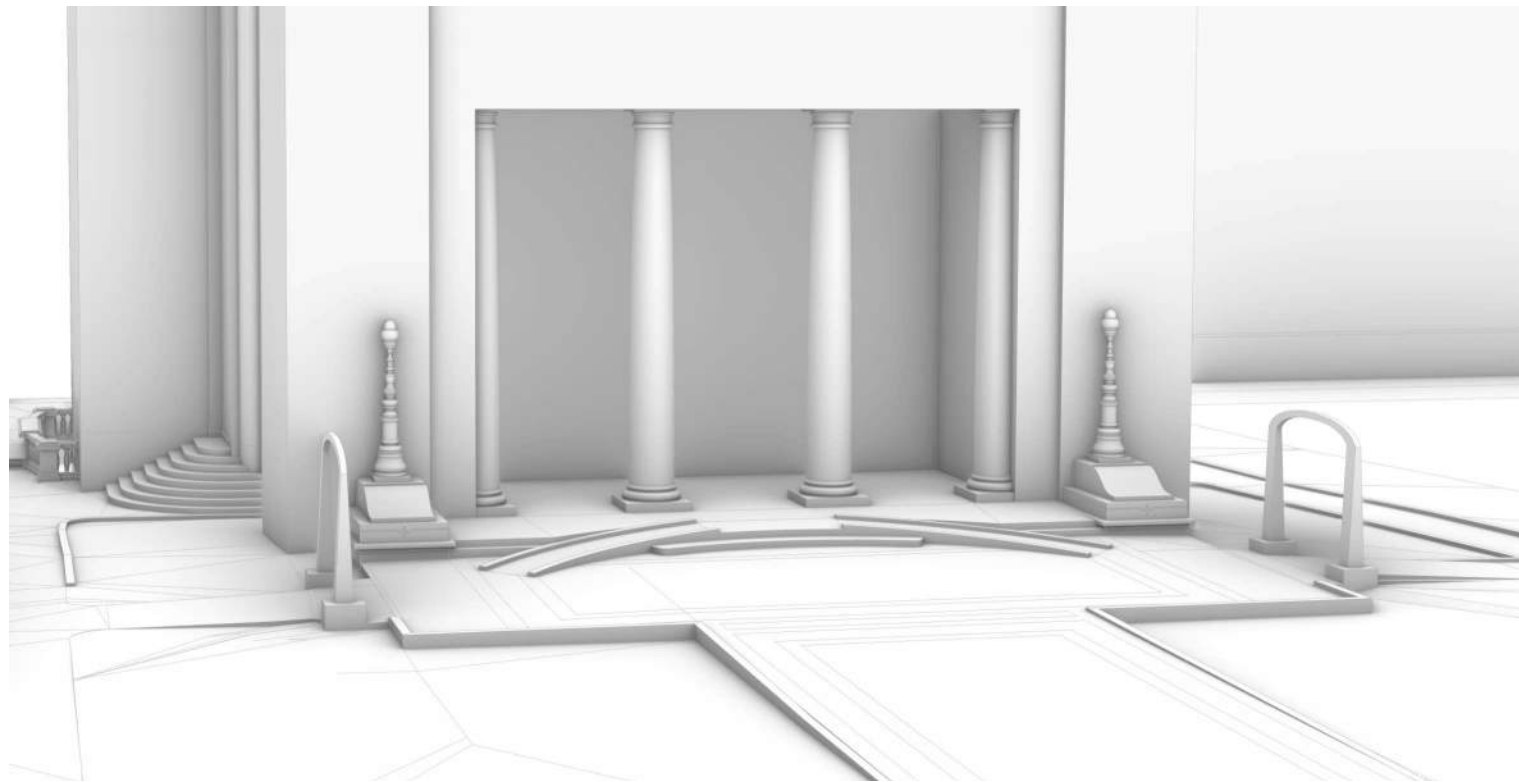




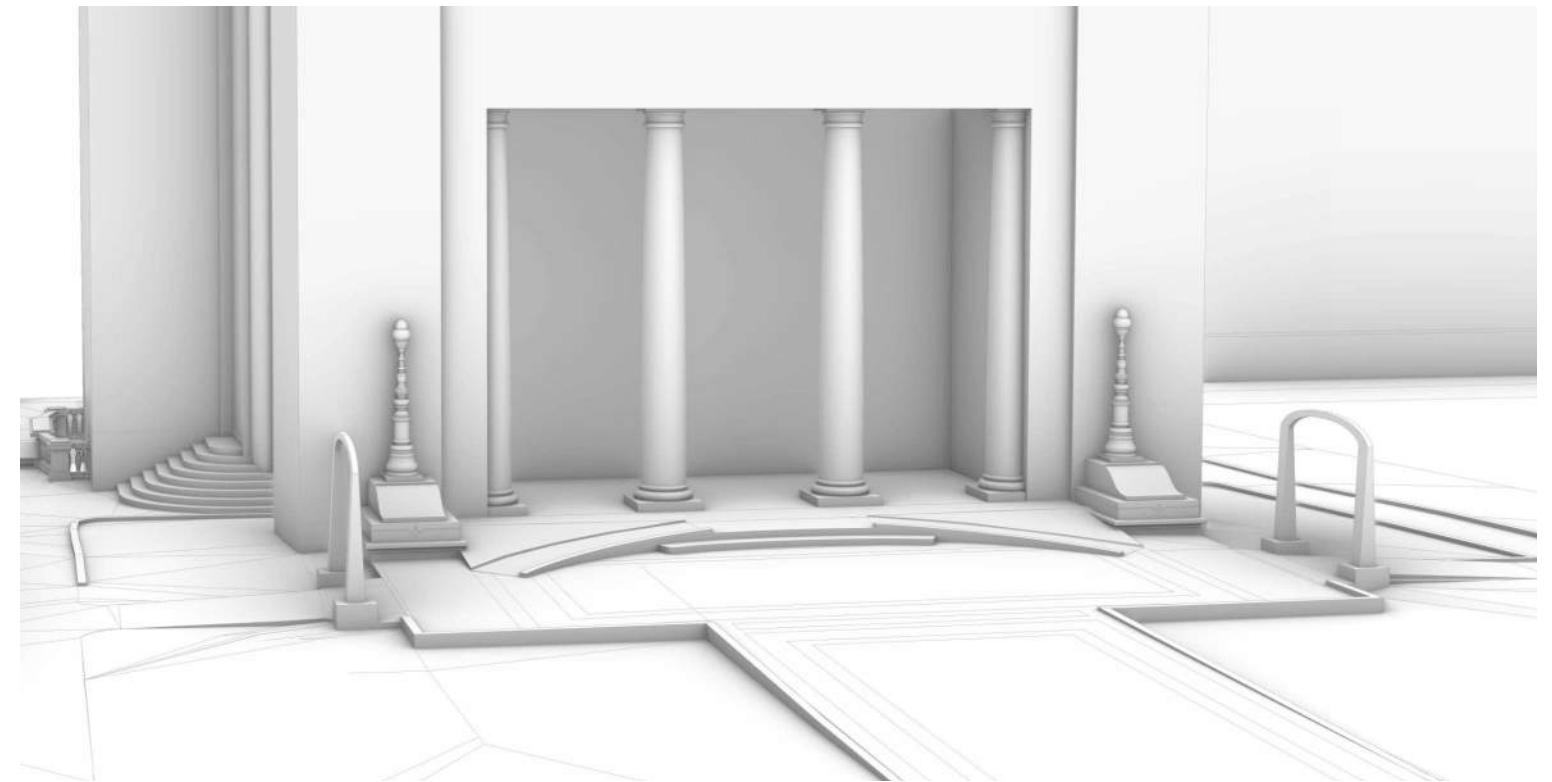
SCHEME #4



SCHEME #5



SCHEME #6



SCHEME #6.1

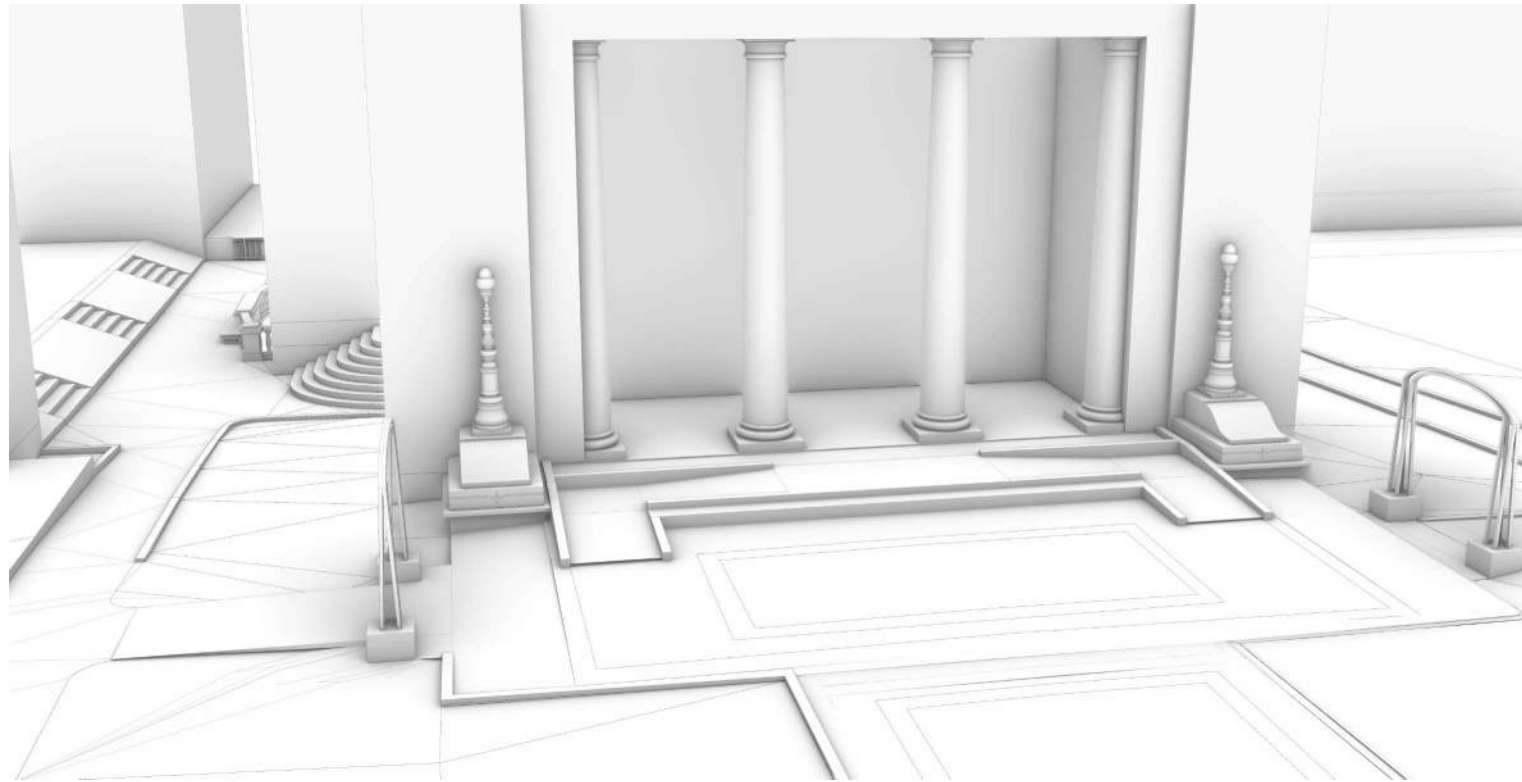
# ST. PAUL'S CHAPEL - APPENDIX: ALTERNATE UNSELECTED SCHEMES

WALTER B. MELVIN ARCHITECTS  
KRISTA BENTSON LANDSCAPE ARCHITECTURE

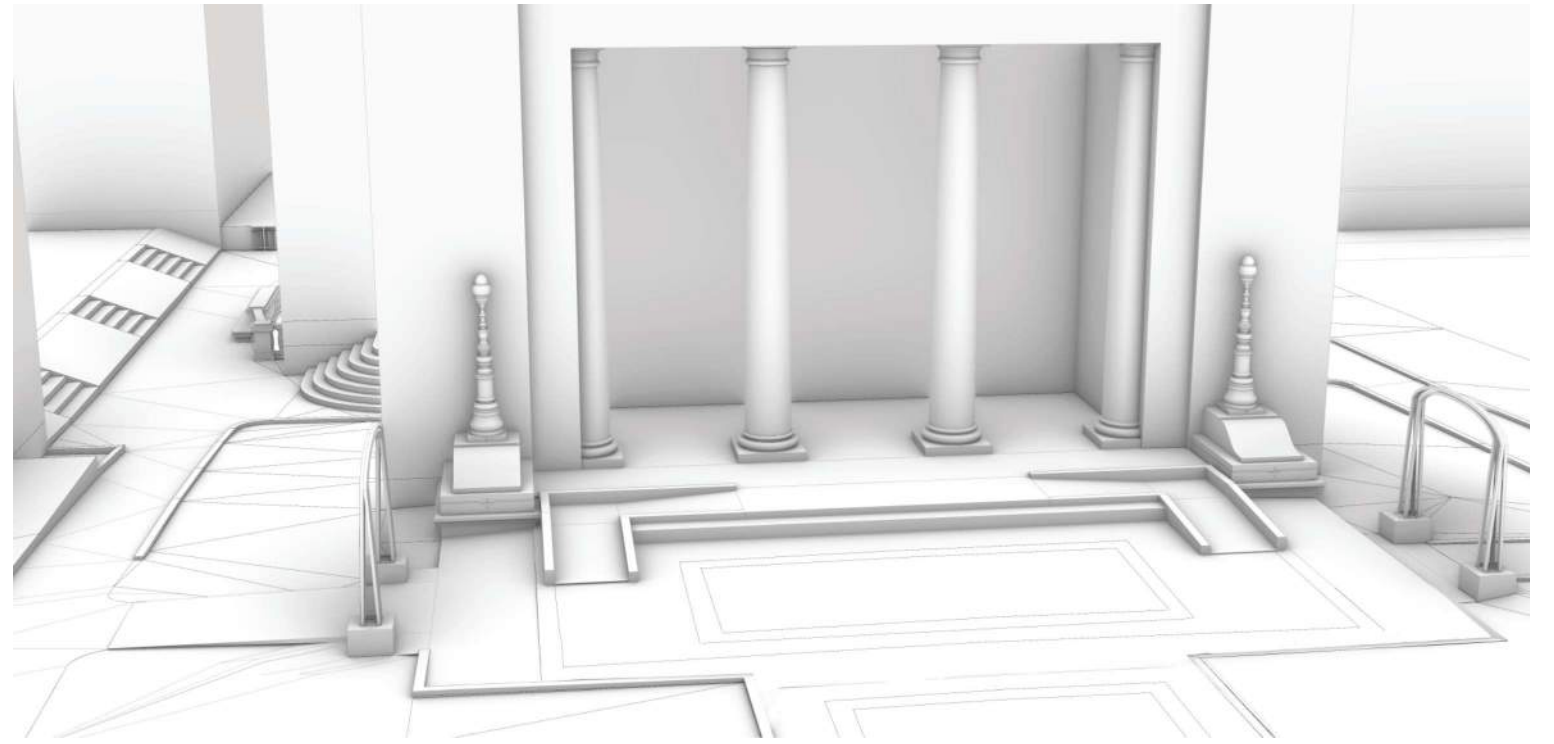
COLUMBIA UNIVERSITY - ST. PAUL'S CHAPEL  
1160 AMSTERDAM AVENUE, NY, NY

LANDMARKS PRESERVATION COMMISSION

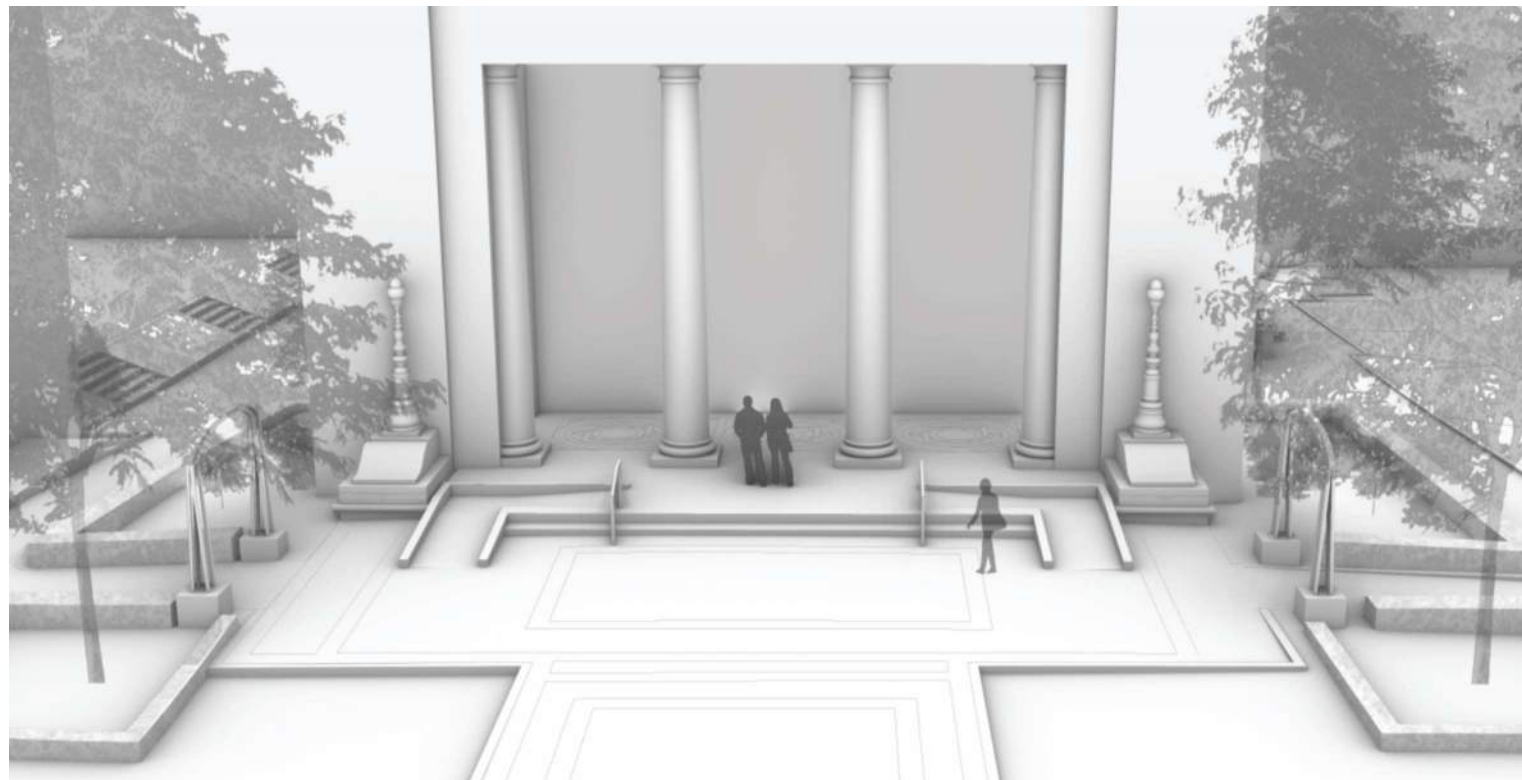




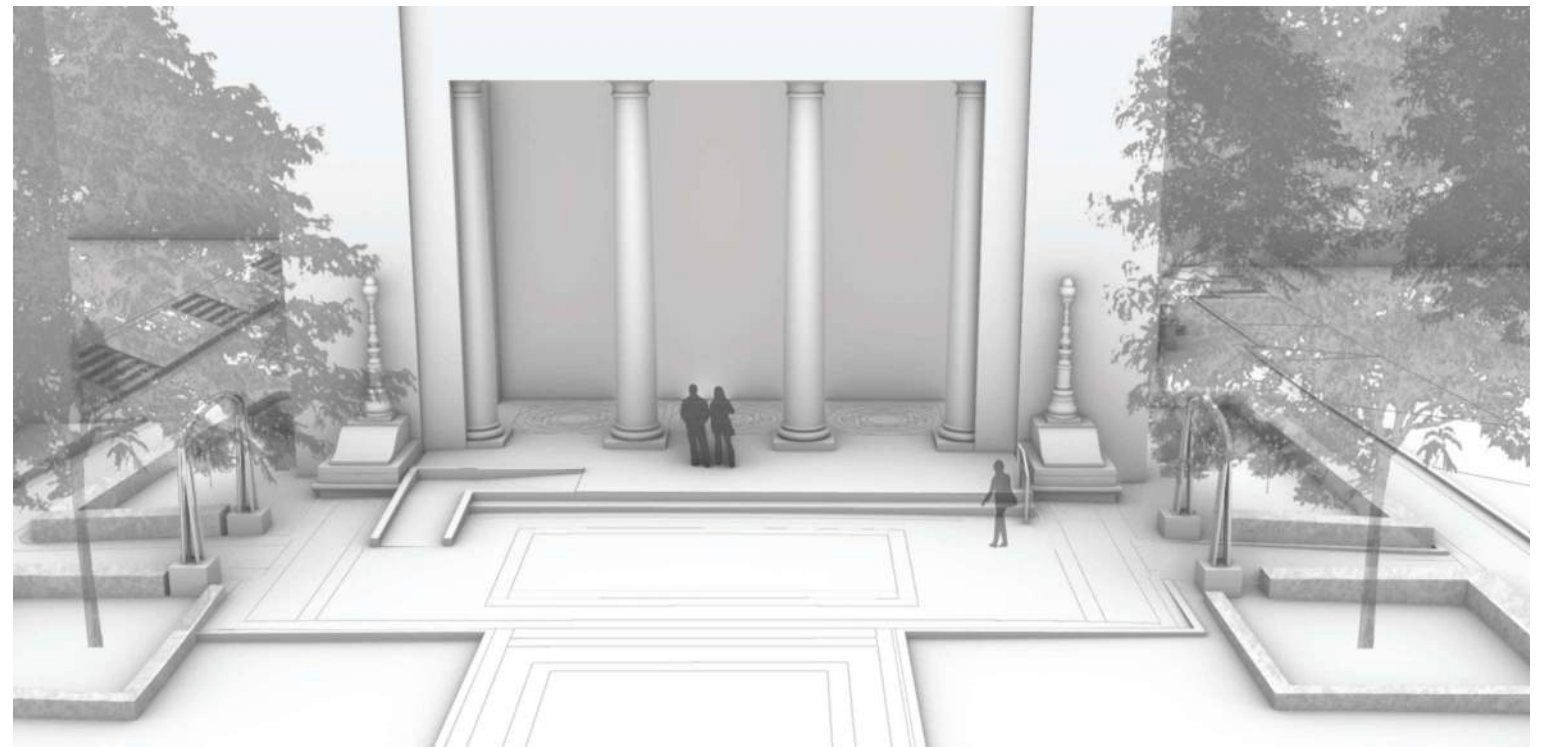
SCHEME #7



SCHEME #7.1



SCHEME #7.2



SCHEME #7.3

## ST. PAUL'S CHAPEL - APPENDIX: ALTERNATE UNSELECTED SCHEMES

WALTER B. MELVIN ARCHITECTS  
KRISTA BENTSON LANDSCAPE ARCHITECTURE

COLUMBIA UNIVERSITY - ST. PAUL'S CHAPEL  
1160 AMSTERDAM AVENUE, NY, NY

LANDMARKS PRESERVATION COMMISSION



September 24, 2024  
Public Hearing

The current proposal is:

Preservation Department – Item 8, LPC-25-00279

# 1160 Amsterdam Avenue – Saint Paul's Chapel – Individual Landmark Borough of Manhattan

To testify virtually, please join Zoom

**Webinar ID:** 852 4740 5541

**Passcode:** 410385

By Phone: 646-558-8656 (NY)

877-853-5257 (Toll free) US

888-475-4499 (Toll free)

**Note:** If you want to testify virtually on an item, join the Zoom webinar at the agenda's "Be Here by" time (about an hour in advance). When the Chair indicates it's time to testify, "raise your hand" via the Zoom app if you want to speak (\*9 on the phone). Those who signed up in advance will be called first.