

LPC DESIGNATION MAP



1940S TAX PHOTO

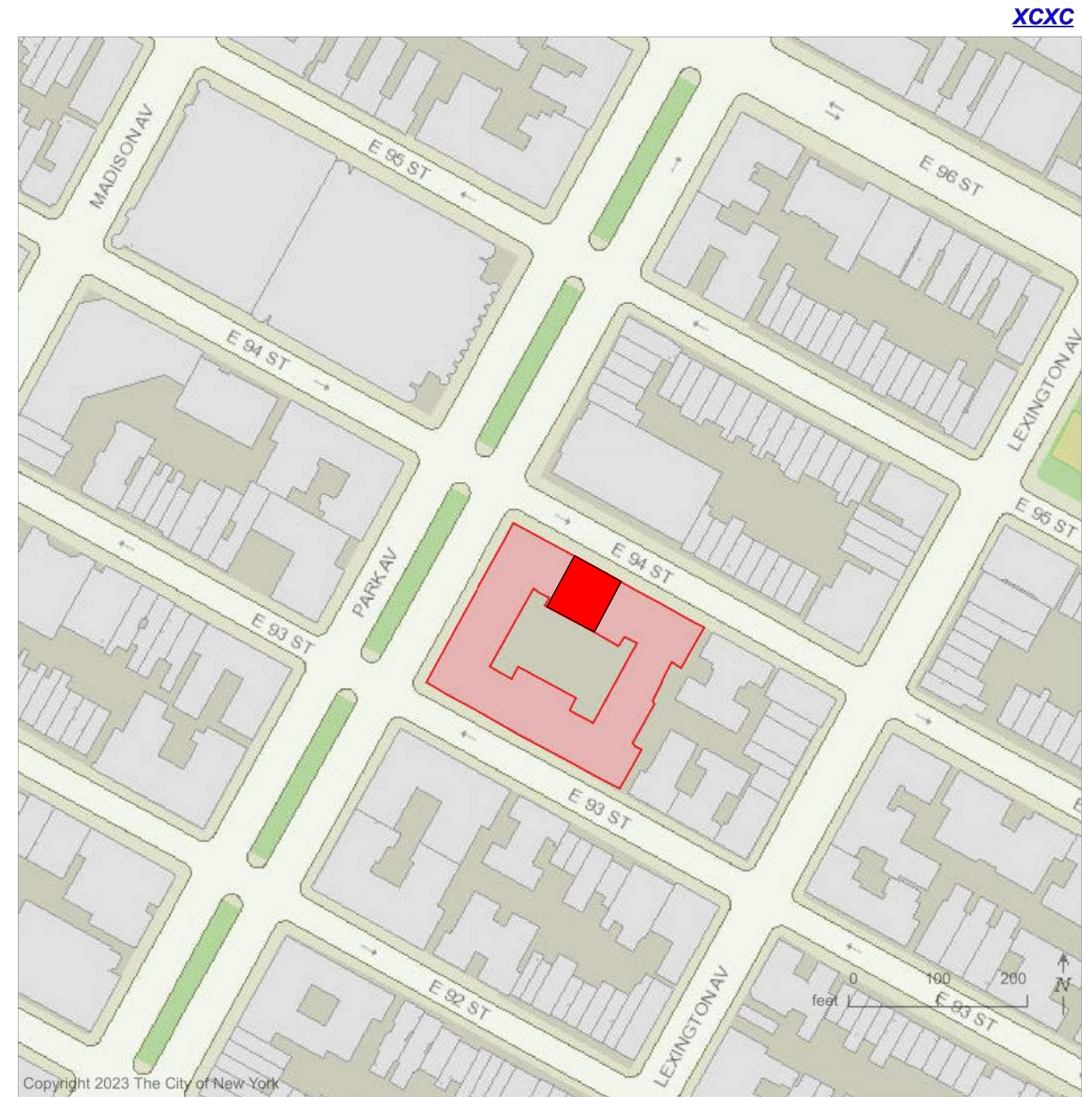
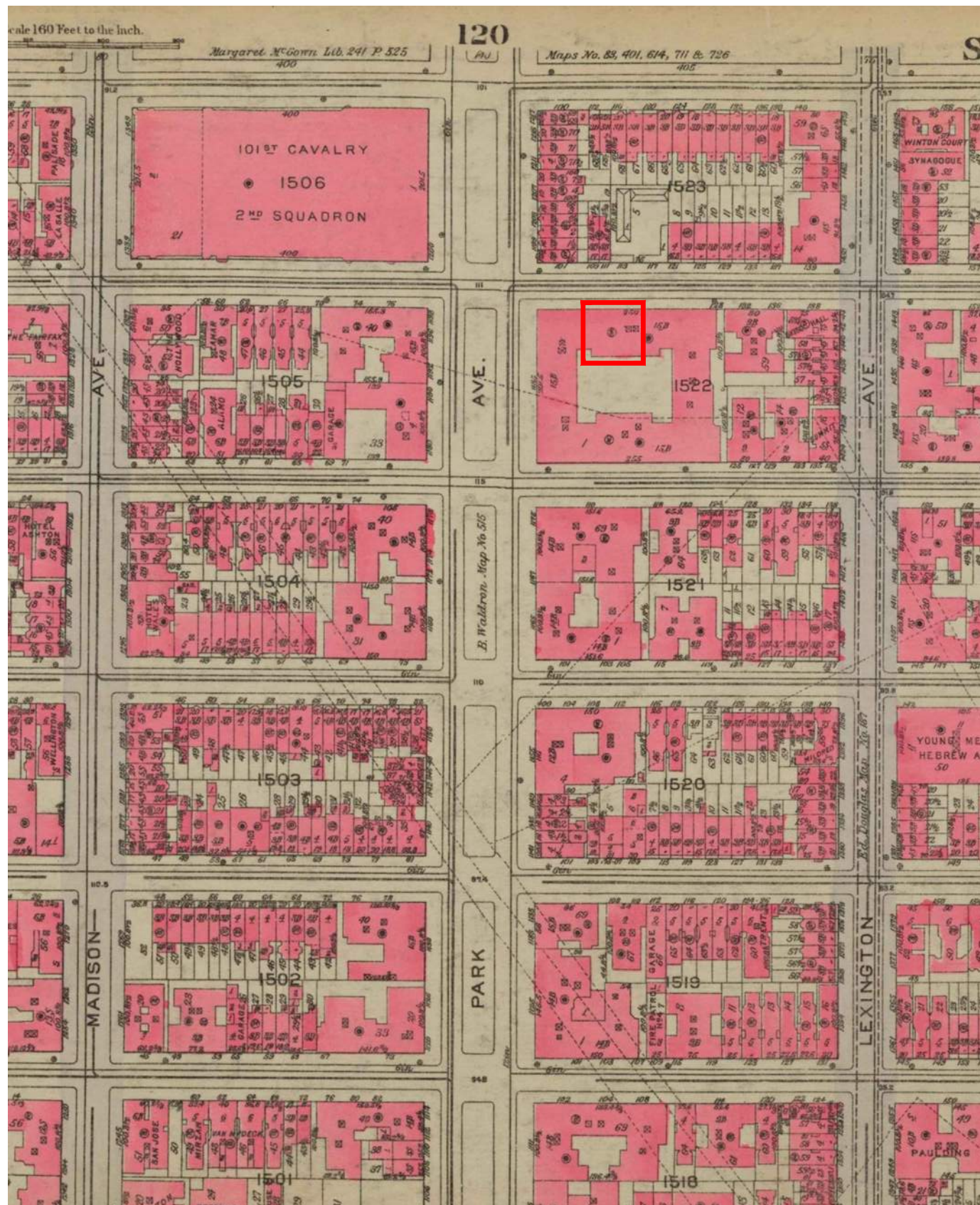
JOSHUA  
BRANDFONBRENER  
ARCHITECT

PO BOX 297  
ARDSLEY ON HUDSON NY 10503  
917 863 1180  
JOSH@JOSHBRANDARCH.COM

**APARTMENT 14L - KRUSE**  
1185 PARK AVENUE, NEW YORK, NY

AC LOUVERS IN WINDOW  
OCTOBER 2, 2024

LPC-1



LOCATION MAP

1930 SANBORN MAP

JOSHUA  
BRANDFONBRENER  
ARCHITECT

PO BOX 297  
ARDSLEY ON HUDSON NY 10503  
917 863 1180  
JOSH@JOSHBRANDARCH.COM

**APARTMENT 14L - KRUSE**  
1185 PARK AVENUE, NEW YORK, NY

AC LOUVERS IN WINDOW  
OCTOBER 2, 2024

LPC-2



EXISTING MAID'S AREA WINDOW WITH EXISTING LOUVER IN PLACE OF UPPER SASH

SEE LPC-6 FOR KEY MAP

JOSHUA BRANDFONBRENER ARCHITECT

PO BOX 297 ARDSLEY ON HUDSON NY 10503 917 863 1180 JOSH@JOSHBRANDARCH.COM

APARTMENT 14L - KRUSE 1185 PARK AVENUE, NEW YORK, NY

AC LOUVERS IN WINDOW OCTOBER 2, 2024

LPC-3



EXISTING MAID'S AREA WINDOW WITH EXISTING LOUVER IN PLACE OF UPPER SASH

VIEW FROM 95TH STREET LOOKING WEST FROM NORTH SIDE OF STREET TOWARDS PARK AVE

SEE LPC-6 FOR KEY MAP

JOSHUA BRANDFONBRENER ARCHITECT

PO BOX 297 ARDSLEY ON HUDSON NY 10503 917 863 1180 JOSH@JOSHBRANDARCH.COM

APARTMENT 14L - KRUSE 1185 PARK AVENUE, NEW YORK, NY

AC LOUVERS IN WINDOW OCTOBER 2, 2024

LPC-4



EXISTING MAID'S AREA WINDOW WITH EXISTING LOUVER IN PLACE OF UPPER SASH

VIEW FROM 95TH STREET LOOKING FROM NORTH SIDE OF STREET SOUTH TO 1185 PARK

SEE LPC-6 FOR KEY MAP

JOSHUA BRANDFONBRENER ARCHITECT

PO BOX 297 ARDSLEY ON HUDSON NY 10503 917 863 1180 JOSH@JOSHBRANDARCH.COM

APARTMENT 14L - KRUSE 1185 PARK AVENUE, NEW YORK, NY

AC LOUVERS IN WINDOW OCTOBER 2, 2024

LPC-5

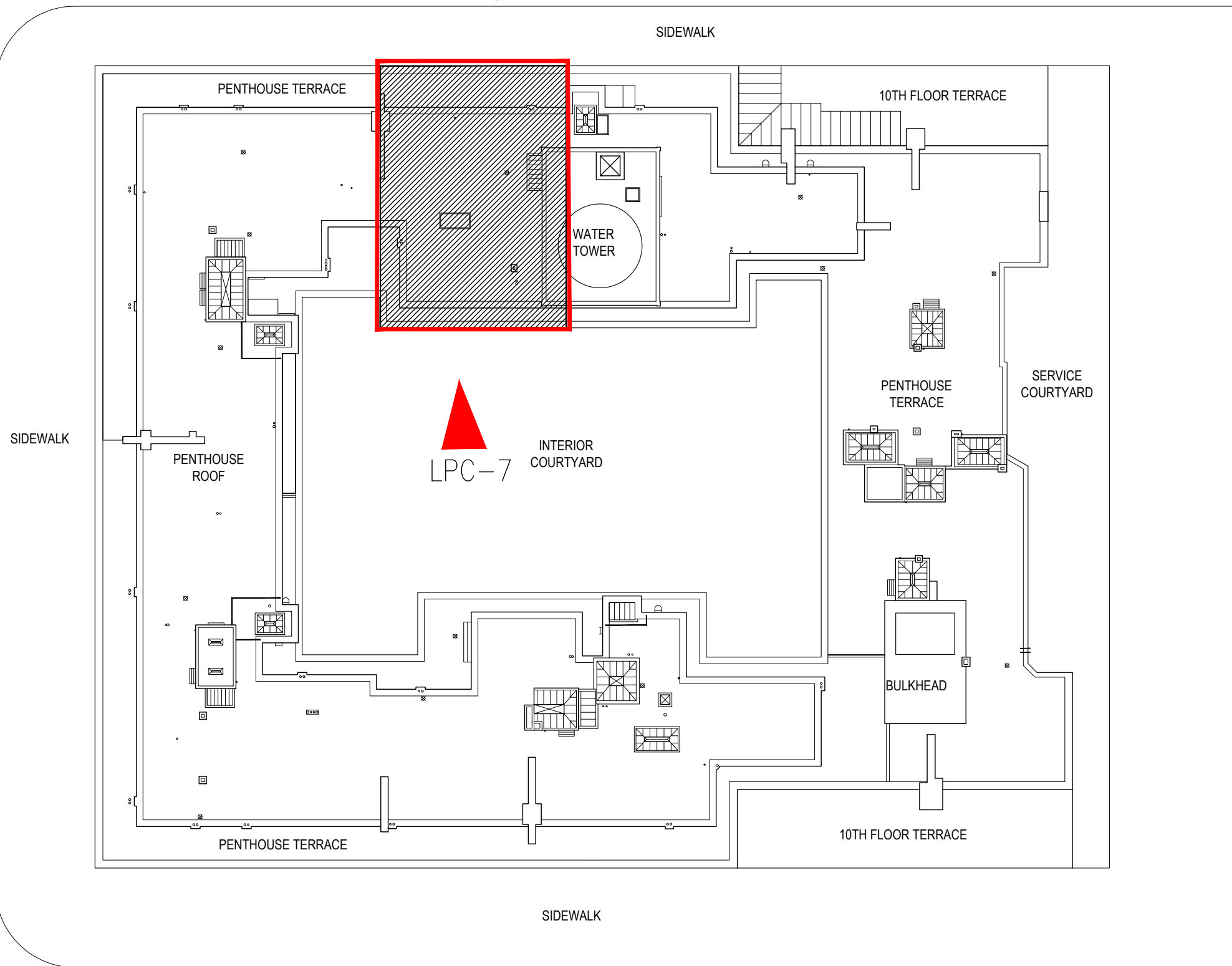
LPC-3 ▲

LPC-5 ▼

▲ LPC-4

94TH STREET

PARK AVENUE



BLOCK PLAN

93RD STREET

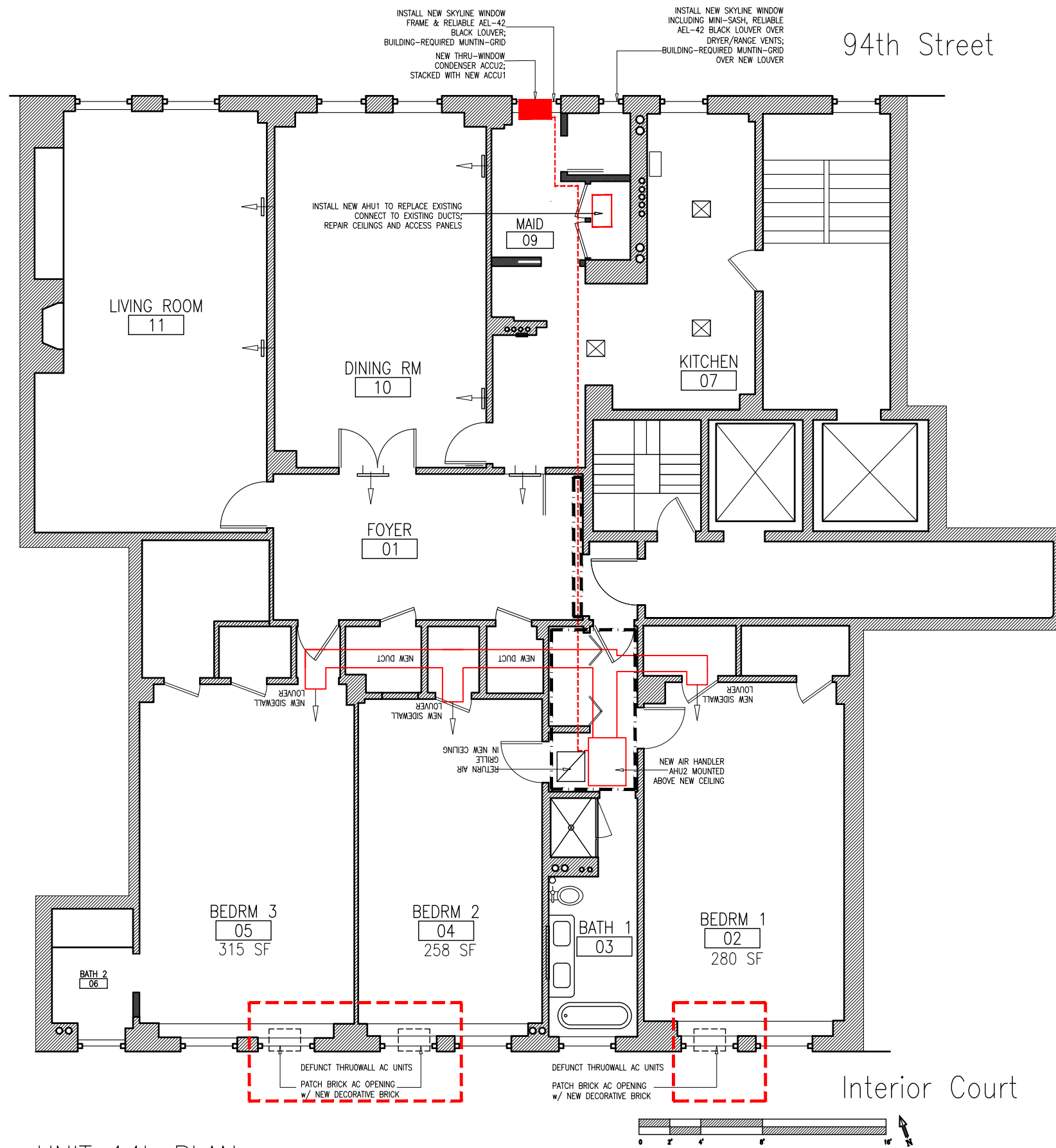
JOSHUA  
BRANDFONBRENER  
ARCHITECT

PO BOX 297  
ARDSLEY ON HUDSON NY 10503  
917 863 1180  
JOSH@JOSHBRANDARCH.COM

**APARTMENT 14L - KRUSE**  
1185 PARK AVENUE, NEW YORK, NY

AC LOUVERS IN WINDOW  
OCTOBER 2, 2024

LPC-6



UNIT 14L PLAN

94th Street

Interior Court



EXISTING THRU WALL ACs THAT NO LONGER WORK (facing courtyard)



JOSHUA  
BRANDFONBRENER  
ARCHITECT

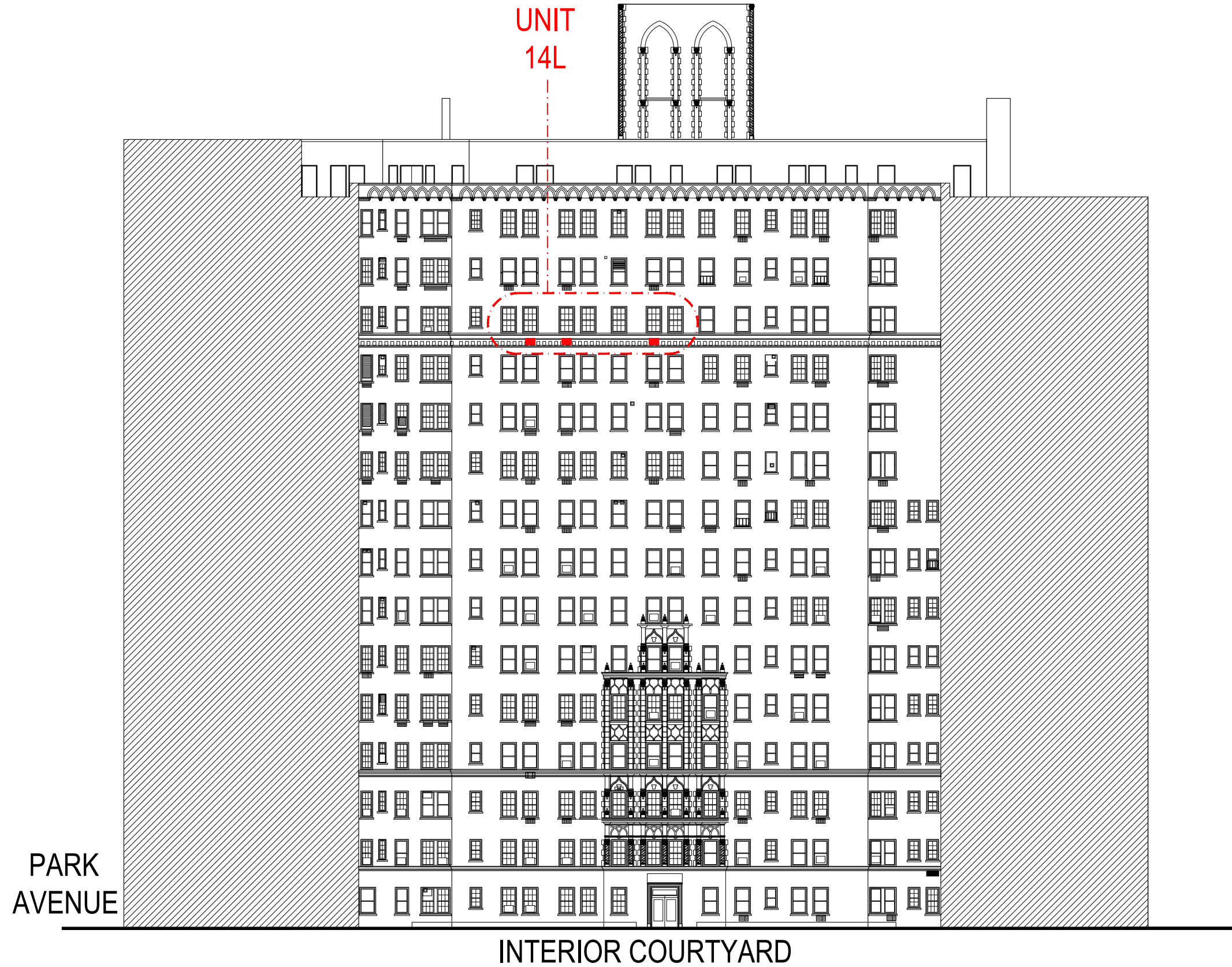
PO BOX 297  
ARDSLEY ON HUDSON NY 10503  
917 863 1180  
JOSH@JOSHBRANDARCH.COM

**APARTMENT 14L - KRUSE**  
1185 PARK AVENUE, NEW YORK, NY

AC LOUVERS IN WINDOW  
OCTOBER 2, 2024

LPC-8





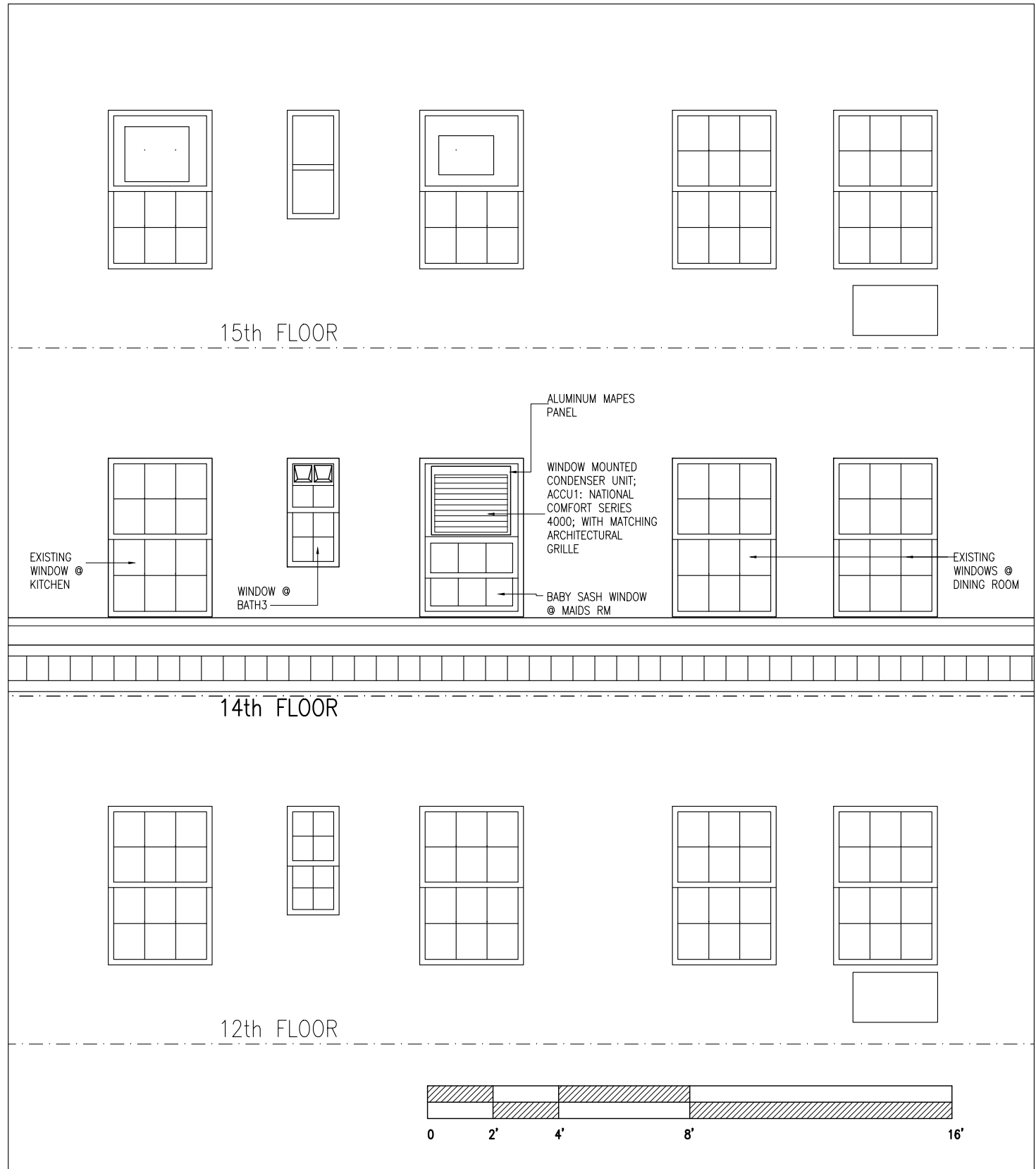
JOSHUA  
BRANDFONBRENER  
ARCHITECT

PO BOX 297  
ARDSLEY ON HUDSON NY 10503  
917 863 1180  
JOSH@JOSHBRANDARCH.COM

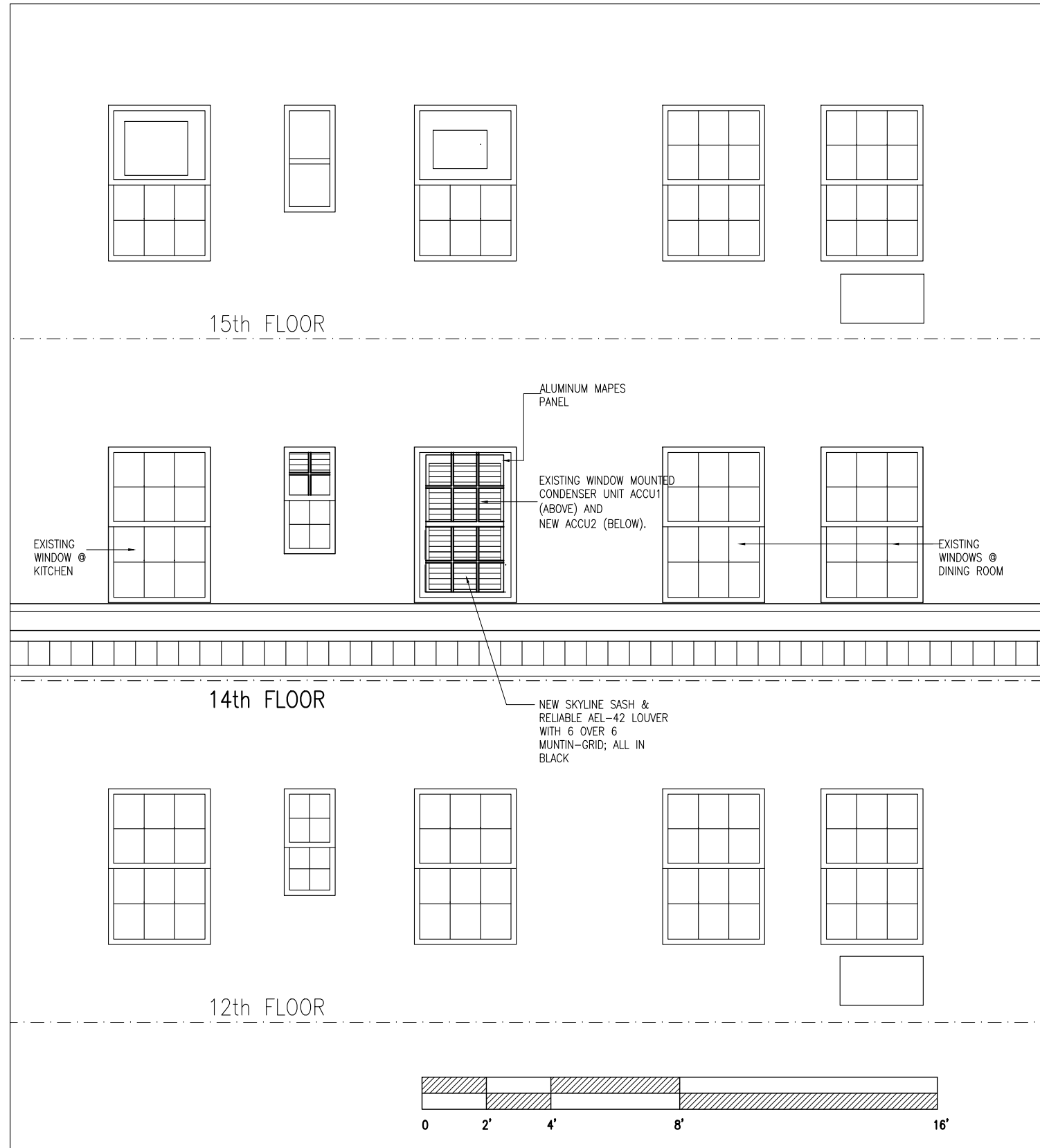
**APARTMENT 14L - KRUSE**  
1185 PARK AVENUE, NEW YORK, NY

AC LOUVERS IN WINDOW  
OCTOBER 2, 2024

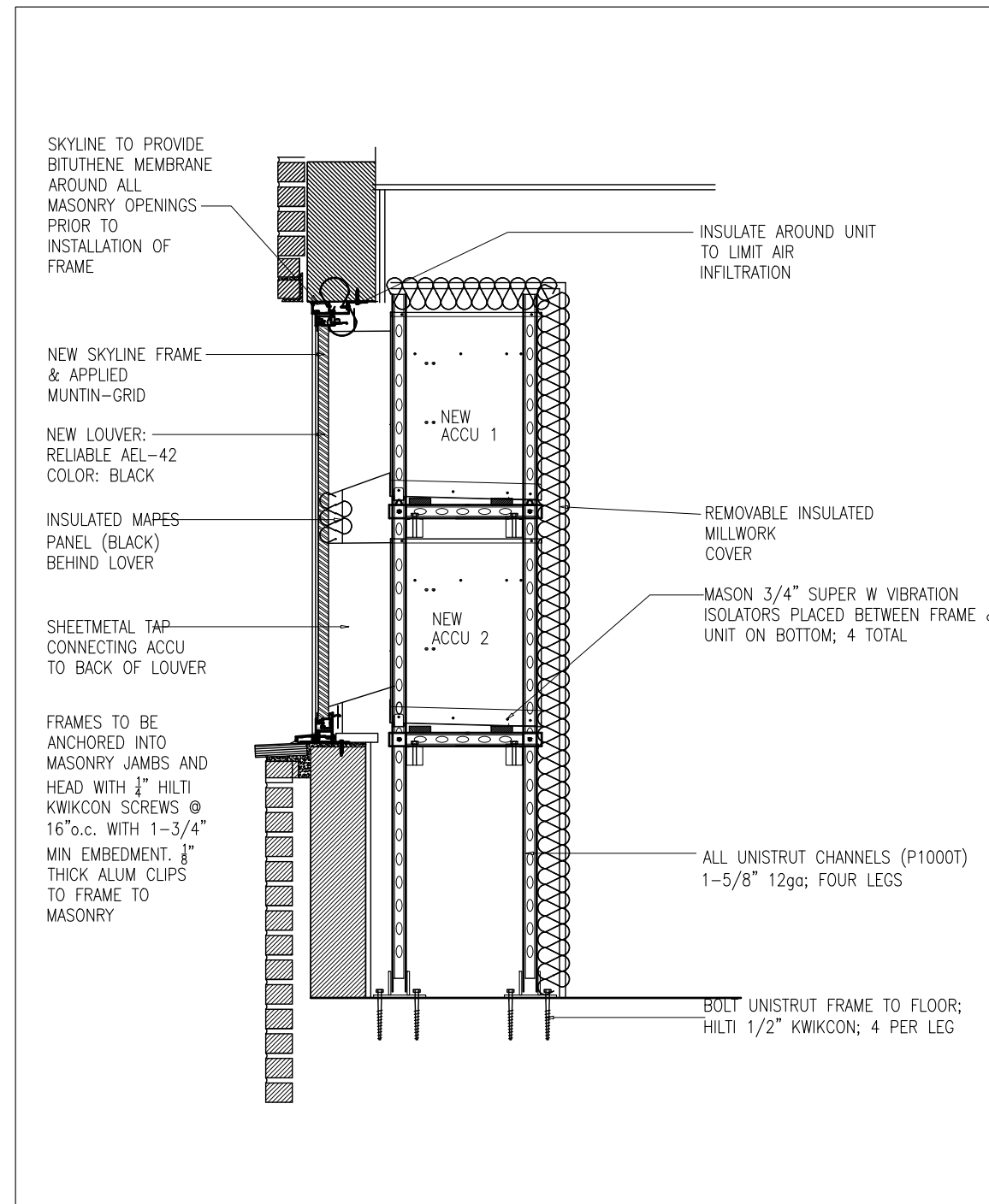
LPC-9



EXISTING 94th St – NORTH ELEVATION



PROPOSED 94th St – NORTH ELEVATION



DOUBLE CONDENSER @ WINDOW LOUVER

**AEL-42**  
**Thinline Louver**  
 Architectural Decorative Louver



**APPLICATION**

The AEL-42 louver is a 1.122" deep thinline stationary louver that is primarily used for PTAC, glazing mechanical screen and other aesthetic applications where water penetration is not a concern.

**STANDARD CONSTRUCTION**

<b>Frame</b>	Extruded aluminum; 6063-T6; 42" architectural decorative louver face and end views for illustration purposes only. A as required, not to exceed 120" (3048) per section. B as required, not to exceed 90" (2286) per section.
<b>Blades</b>	Standard blade thickness .045" and blade spacing .775 (19) with a variety of perimeter frames available.
<b>Brace Bars</b>	Brace bar as required, not to exceed 16" (406).

\*Consult Reliable for larger sizes/multiple sections.

**FEATURES**

- Thin depth for limited space applications
- High free area
- Availability with a variety of frame styles
- Corrosion resistant, all aluminum construction
- Outstanding durability and low maintenance

**VARIATIONS**

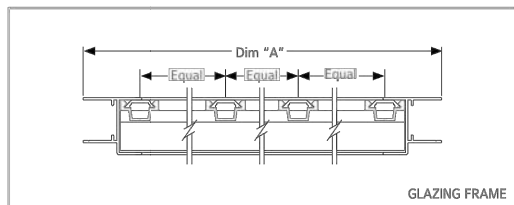
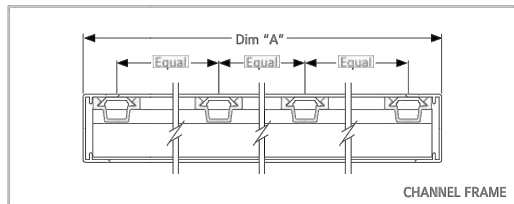
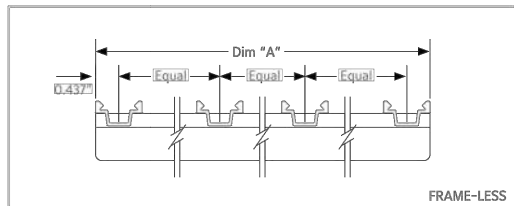
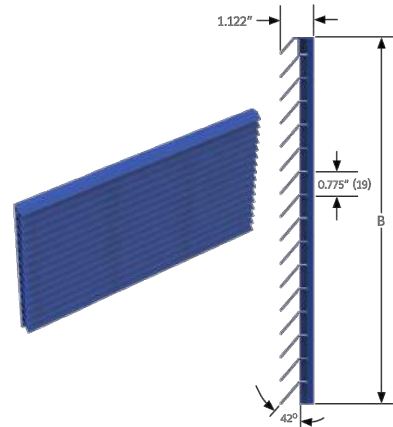
Variations to the basic design of the louver are available at additional cost. They include:

- See AEL frames for perimeter frame options
- 1" (25) blade spacing
- Exterior mounting holes as required
- Heavier blades available
- Aluminum sheet blankoff
- Blank off with 1" (25) insulation
- Blank off with 2" (51) insulation

**FINISH TYPE**

- Prime coat
- Baked Enamel 50% PVDF
- Pearledize 50 & 70
- 50 & 70 PVDF
- Clear and color anodize

\*Consult Reliable for other special requirements.

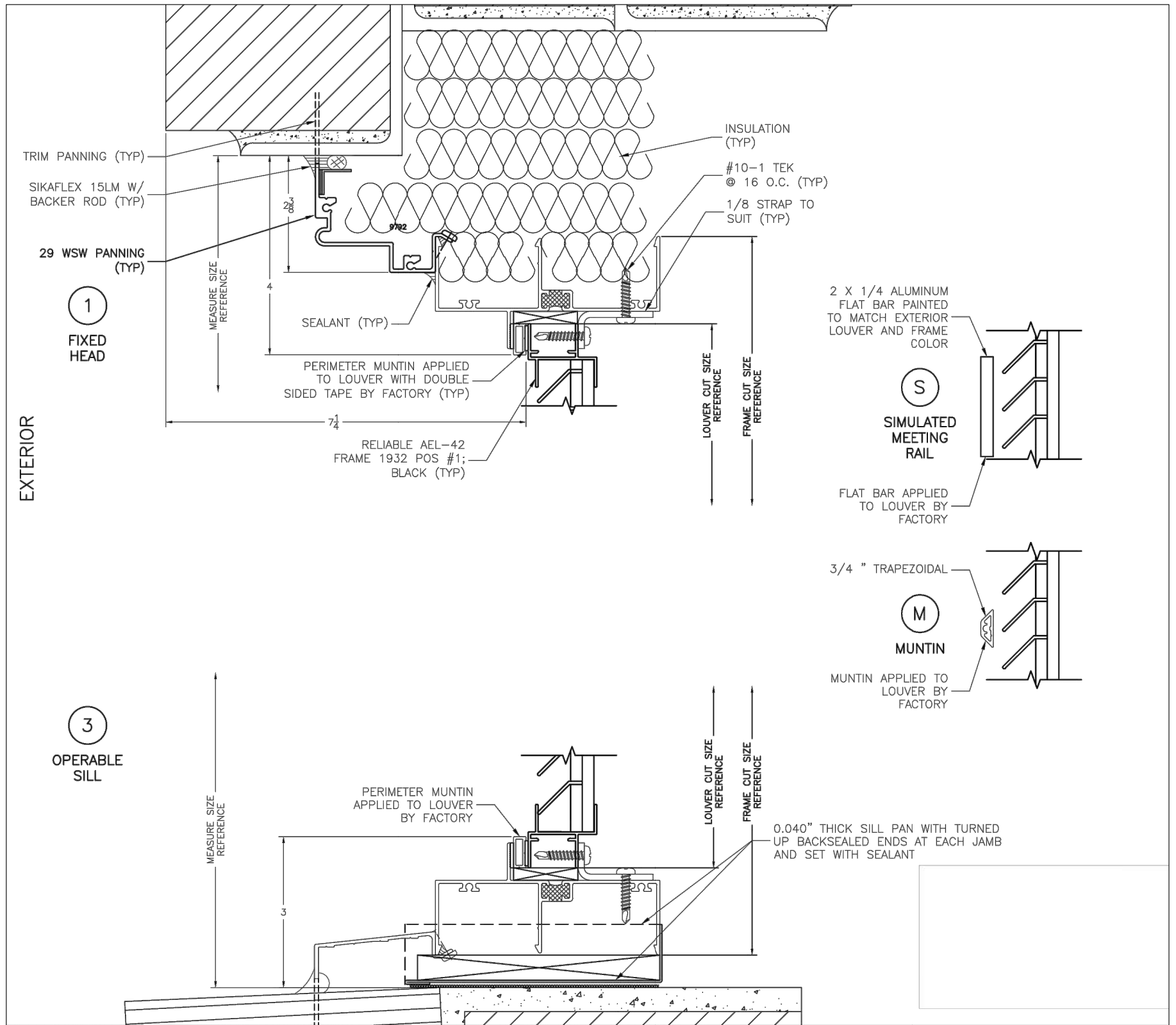


Spec AEL-42 0221-Replaces SEQ 1

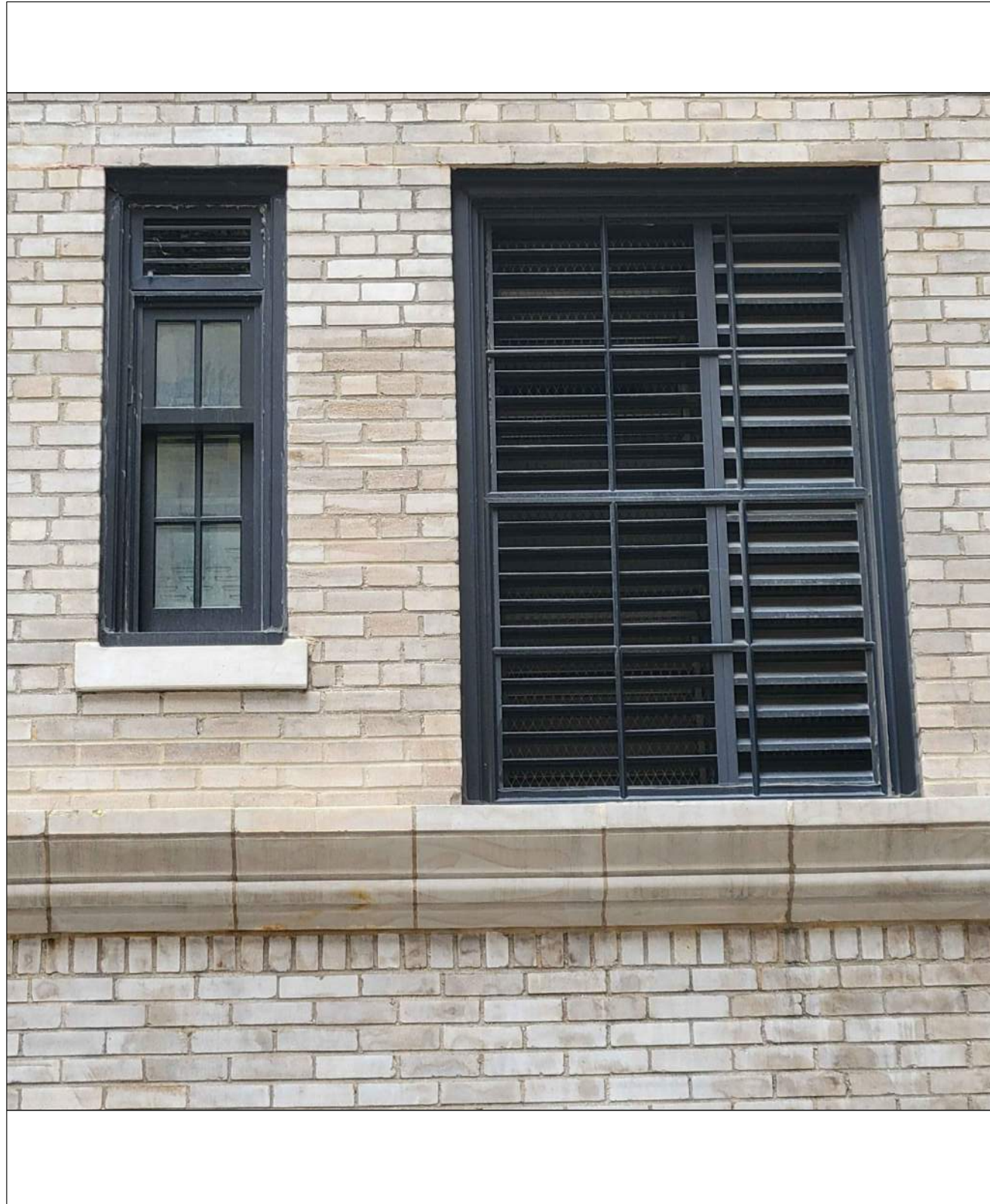
ALL STATED SPECIFICATIONS ARE SUBJECT TO CHANGE WITHOUT NOTICE OR OBLIGATION.

© Reliable February 2021

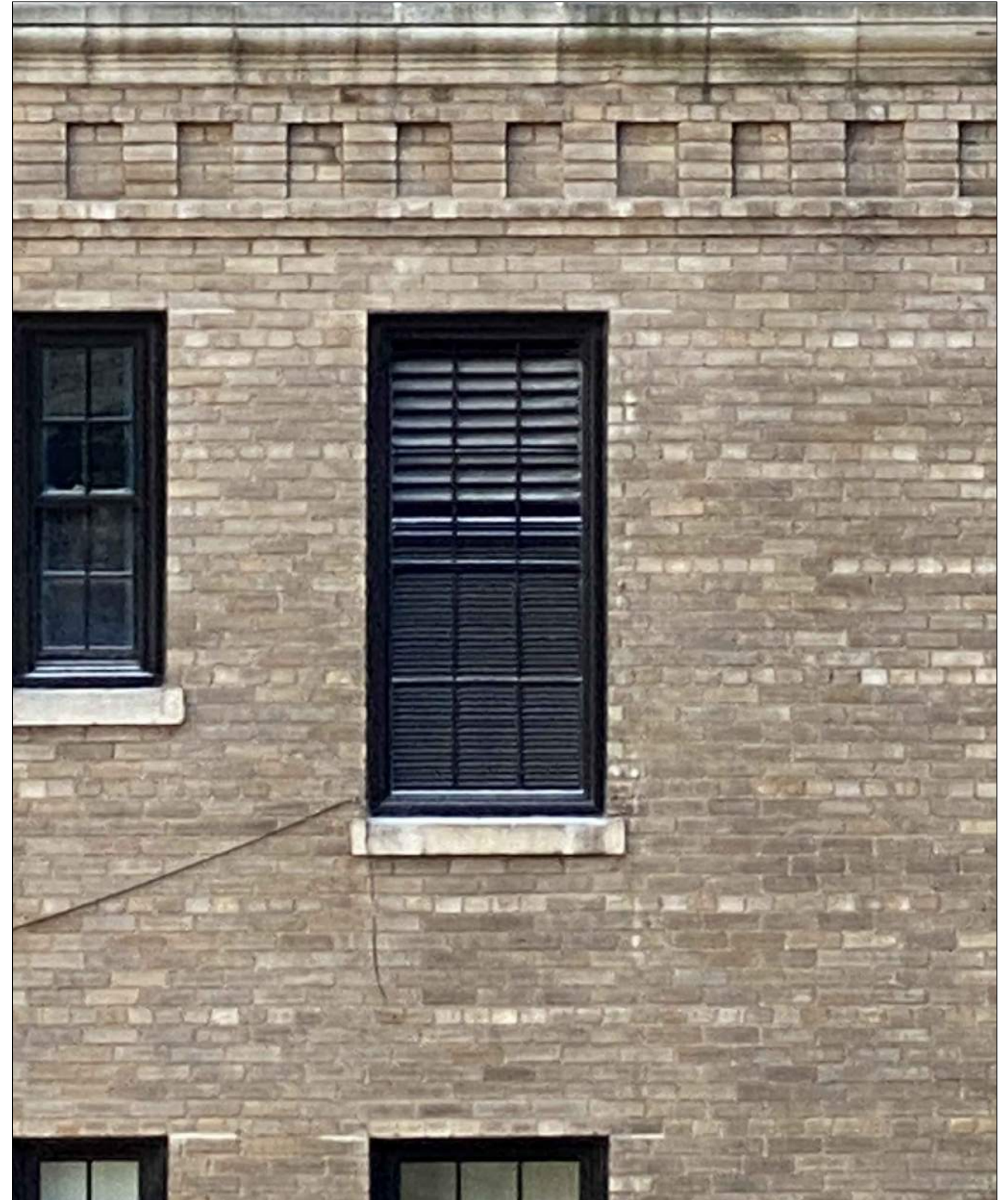
PROPOSED RELIABLE LOUVER (BLACK)



PROPOSED SKYLINE WINDOW SECTION



INTERIOR COURT FACING  
DOUBLE-LOUVER FOR TWO STACKED  
CONDENSERS AT 1185 PARK



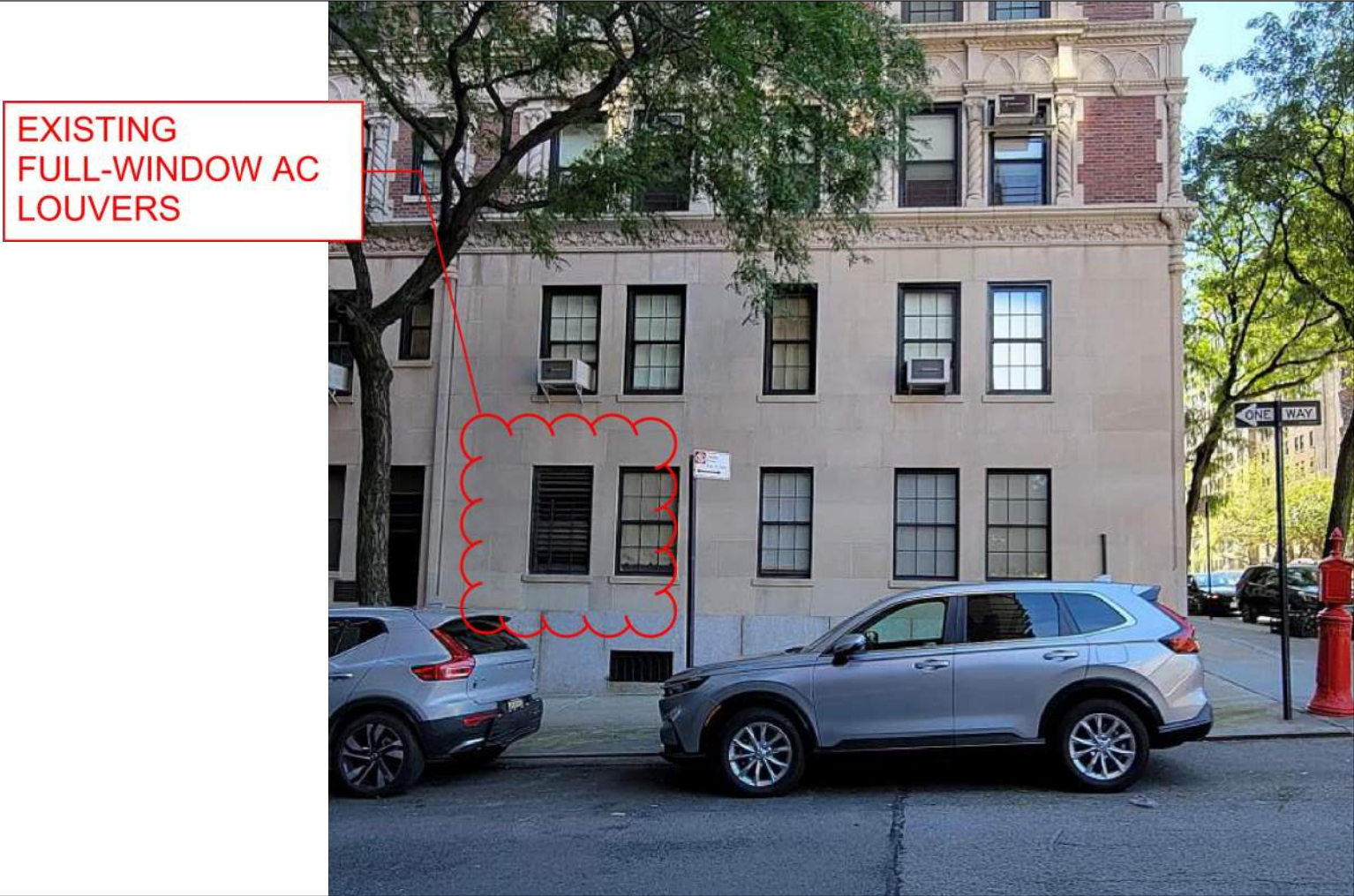
INTERIOR COURT FACING DOUBLE-LOUVER  
FOR ONE LARGE CONDENSER AT 12G, 1185  
PARK AVE



EXISTING  
FULL-WINDOW AC  
LOUVERS

94TH STREET

EXISTING FULL LOUVER IN UNIT 1L, FACING  
94TH STREET



EXISTING  
FULL-WINDOW AC  
LOUVERS

EXISTING FULL LOUVER IN UNIT 1A, FACING  
94TH STREET