

December 3, 2024
Public Hearing

The current proposal is:

Preservation Department – Item 4, LPC-24-08508

27-29 Great Jones Street – NoHo Historic District Extension

Borough of Manhattan

To testify virtually, please join Zoom

Webinar ID: 161 083 9543

Passcode: 620822

By Phone: 646-558-8656 (NY)

877-853-5257 (Toll free) US

888-475-4499 (Toll free)

Note: If you want to testify virtually on an item, join the Zoom webinar at the agenda's "Be Here by" time (about an hour in advance). When the Chair indicates it's time to testify, "raise your hand" via the Zoom app if you want to speak (*9 on the phone). Those who signed up in advance will be called first.

27-29 GREAT JONES STREET STOREFRONT REPLACEMENT

29 Great Jones St. New York, NY 10012

LPC PUBLIC HEARING

Atelier García

100 Sackett St. Brooklyn, NY 11231



Figure 36
 27 Great Jones Street, Louis Burger, 1868-70
 29 Great Jones Street, Charles W. Clinton, 1891
 Photo: Jennifer Most

Taken from : NOHO HISTORIC DISTRICT EXTENSION
 Designation Report, New York City Landmarks Preservation Commission
 May 13, 2008



Current Conditions

HISTORIC PICTURES



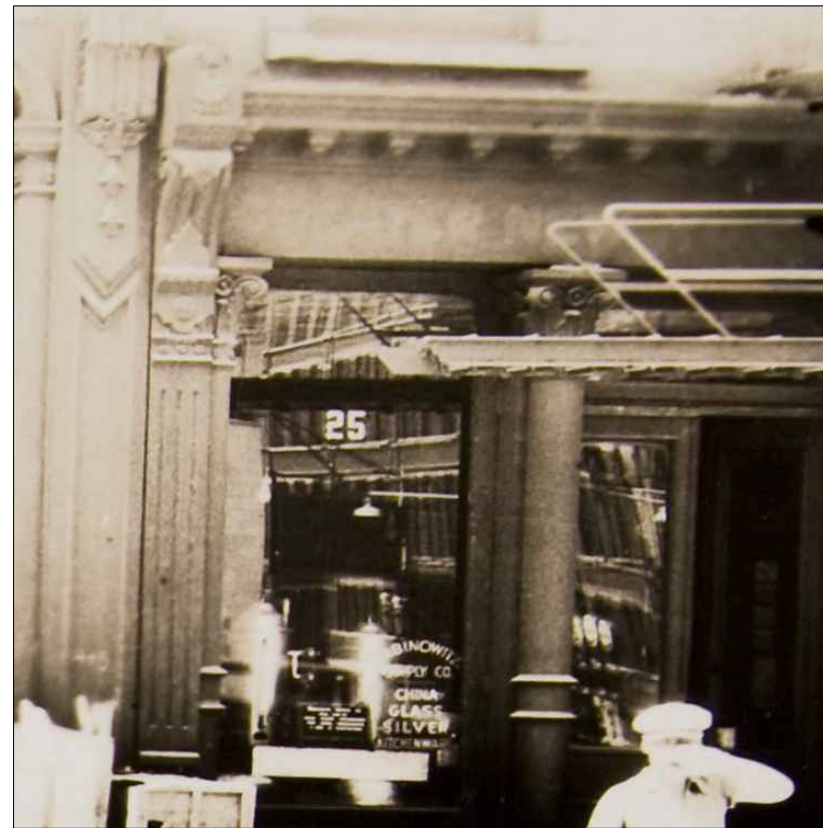
Paper and Twine, Wholesale Crockery
Great Jones Street Looking west from south of Lafayette St., July 7 1931



Paper and Twine, Wholesale Crockery (Detail)
Great Jones Street Looking west from south of Lafayette St., July 7 1931



Paper and Twine, Wholesale Crockery (Center Detail)
Great Jones Street Looking west from south of Lafayette St., July 7, 1931



Paper and Twine, Wholesale Crockery (Right Detail)
Great Jones Street Looking west from south of Lafayette St., July 7, 1931



Tax Photo. 27 Great Jones Street
Block 530- Lot 20, 1939-1941

CURRENT CONDITIONS



Tags and graffiti, broken glass, rust and stickers on Storefront #3.



Tags and graffiti, broken glass, rust and delaminating in existing doors on Storefront #3.



Existing banner support.



Deteriorated window and rail on Storefront #4.



Opaque glass covering pipe chase on Storefront #2.



Existing banners.



Existing light fixtures.



Location of new card reader to be installed at Storefront #4.

CURRENT CONDITIONS



Rust and delamination on side panels.



Rust and delamination on metal doors, broken glass.



Diamond plate current conditions.



Stickers, tags and graffiti on Standpipe

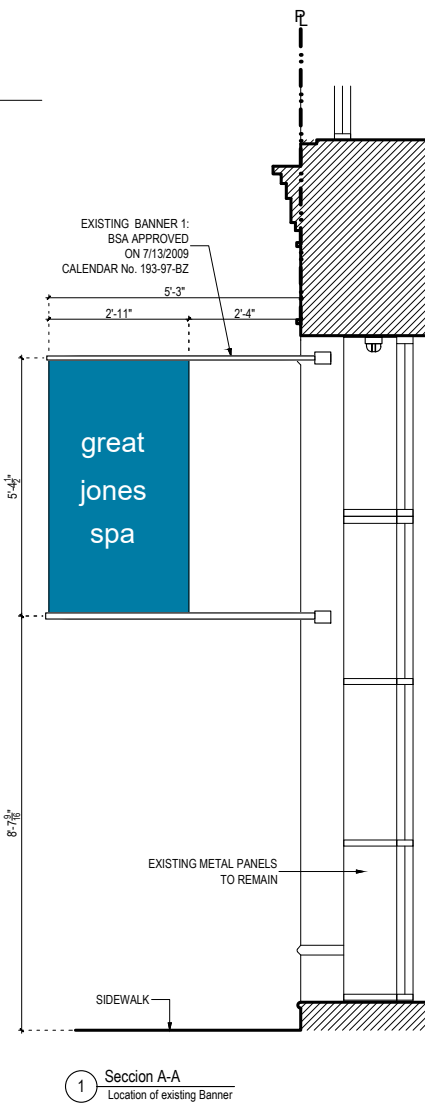
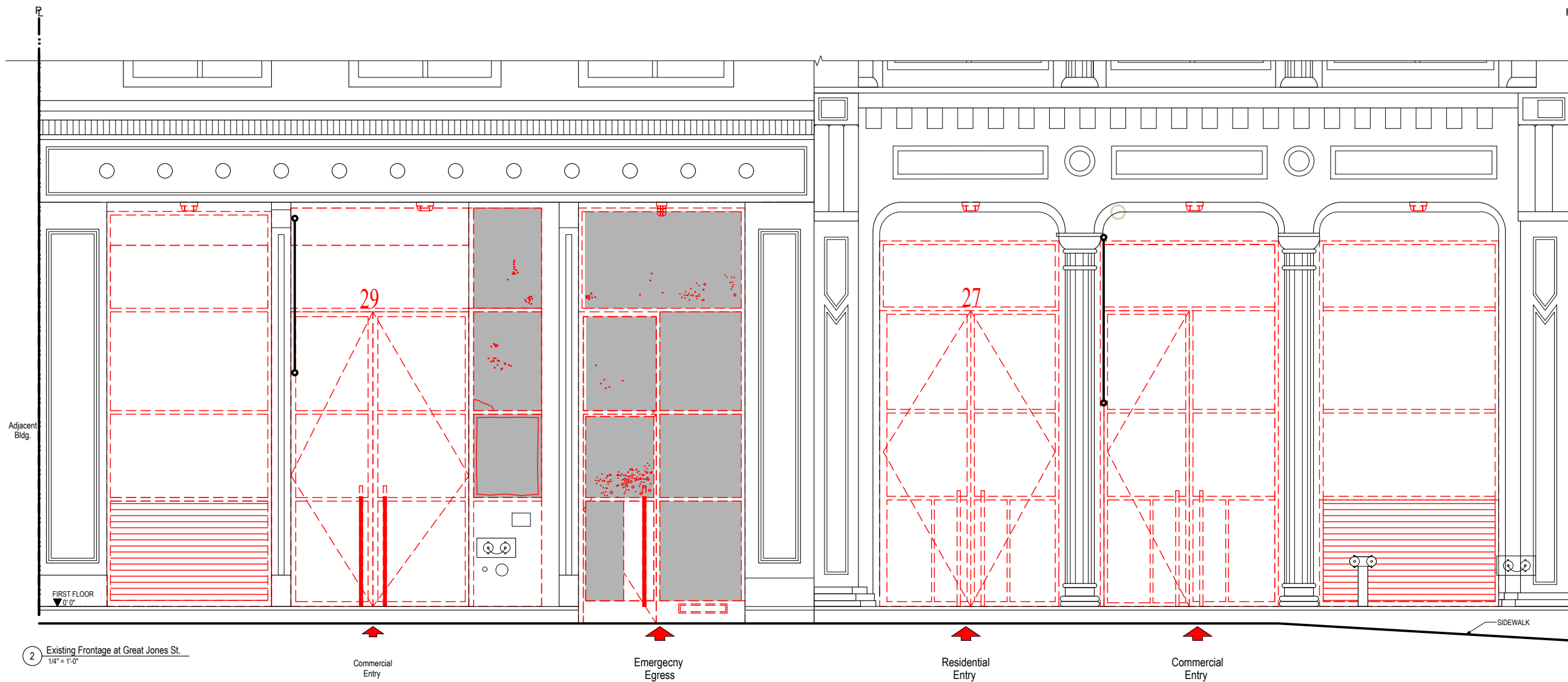


Rusted louvers



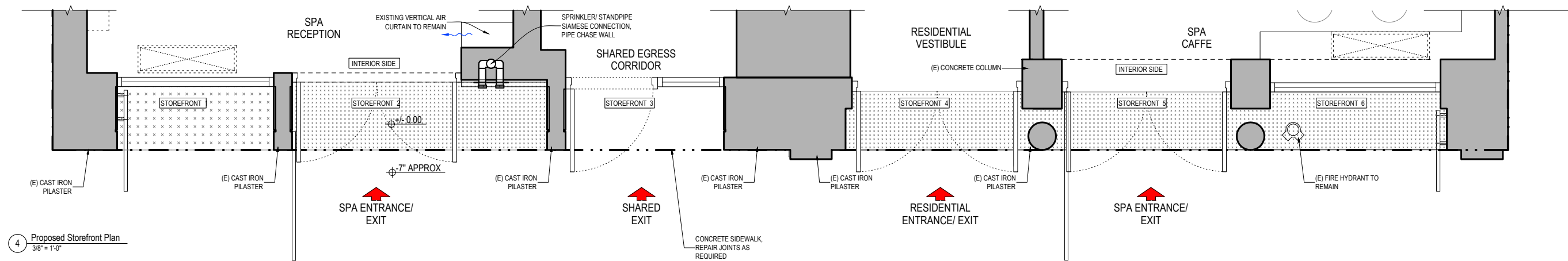
Vandalized glass door. Graffiti and broken glass. Rusted frames.

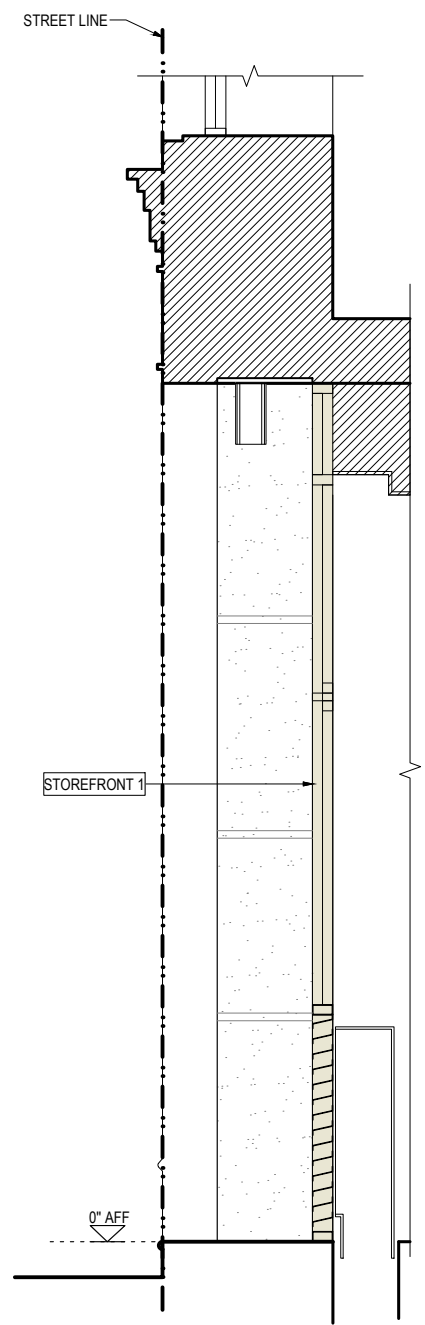
LEGEND
 - - - - - INDICATES DEMOLITION



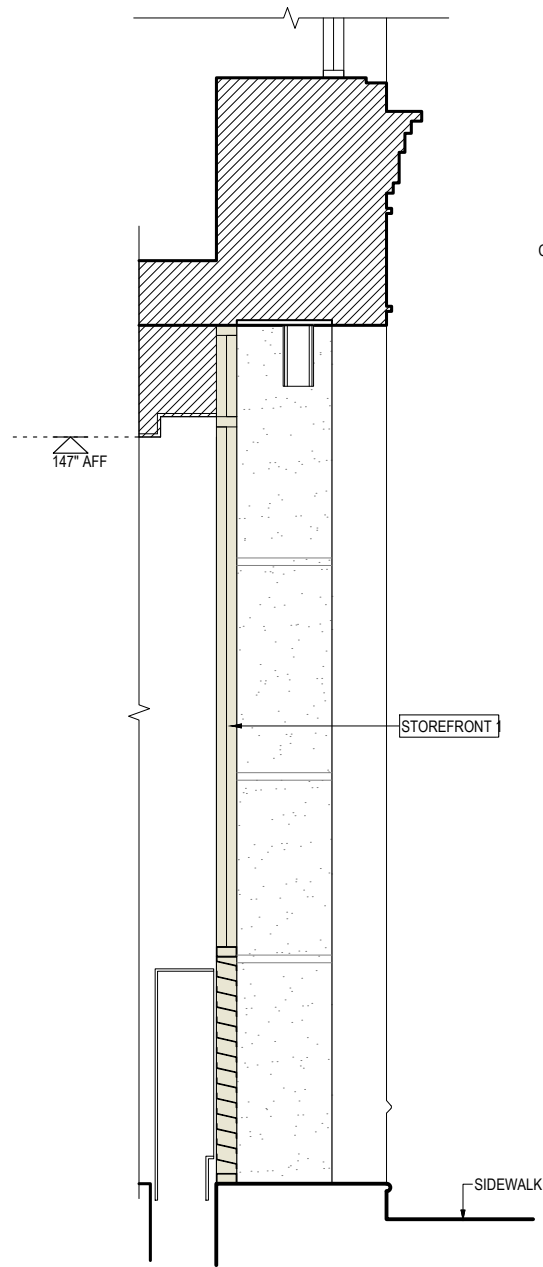
2 Existing Frontage at Great Jones St.
 1/4" = 1'-0"

1 Section A-A
 Location of existing Banner

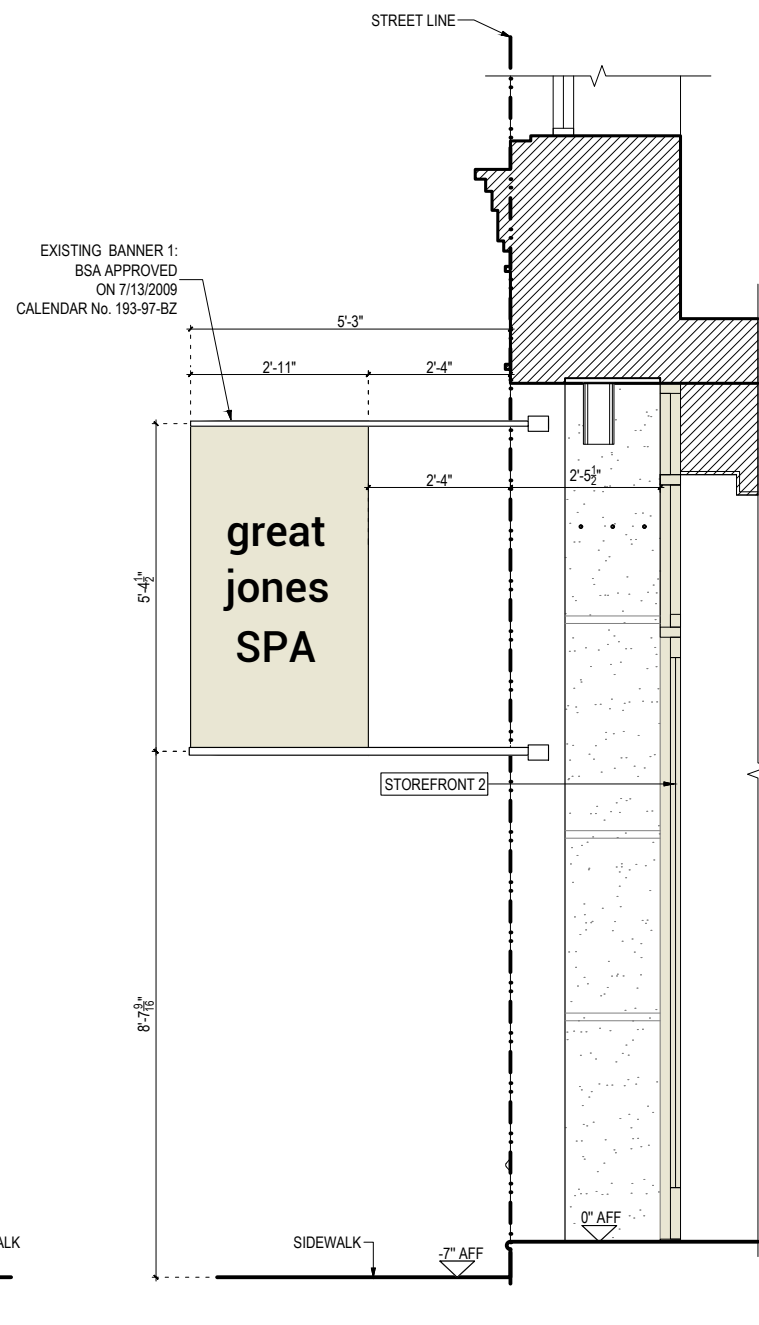




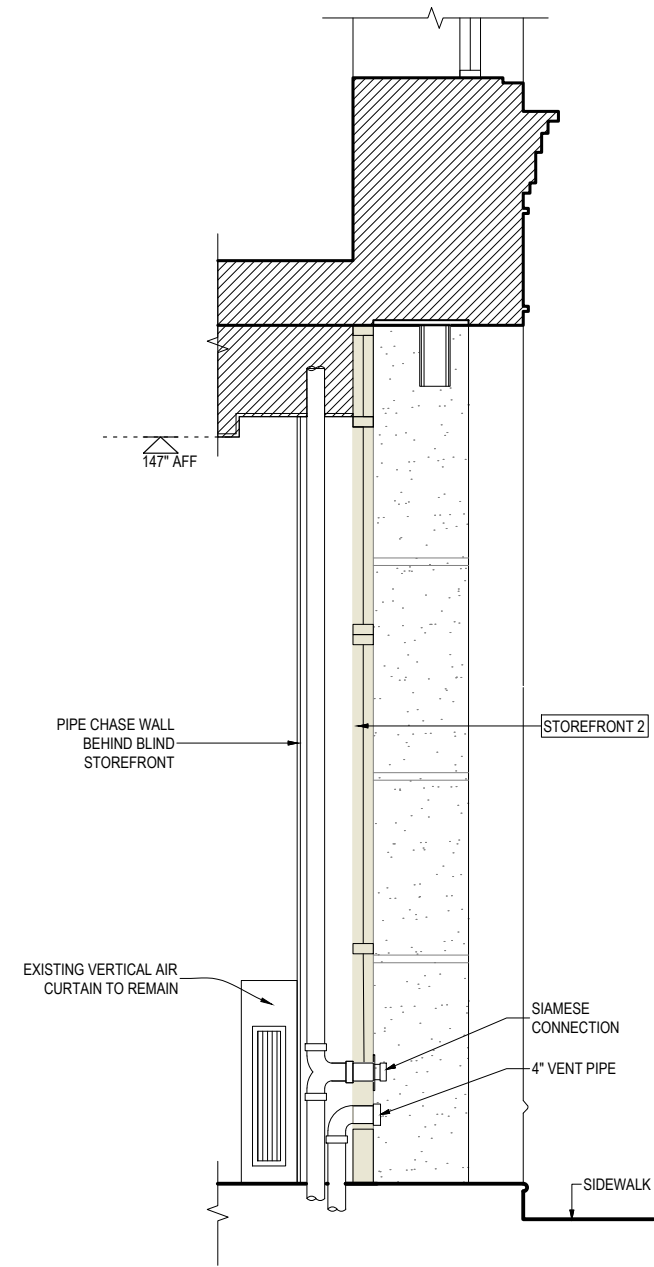
1 Storefront 1 Section- Looking East



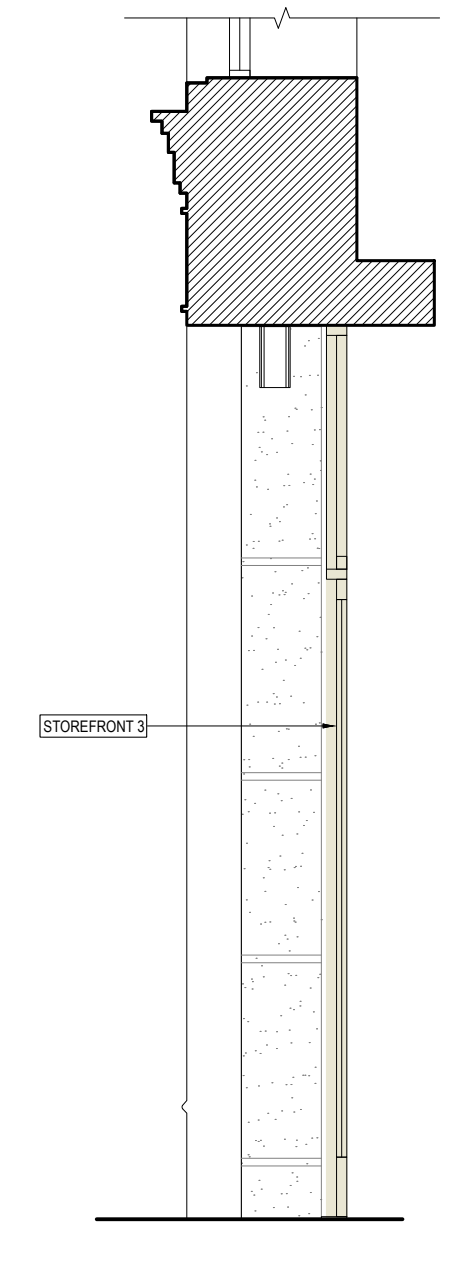
2 Storefront 1 Section- Looking West



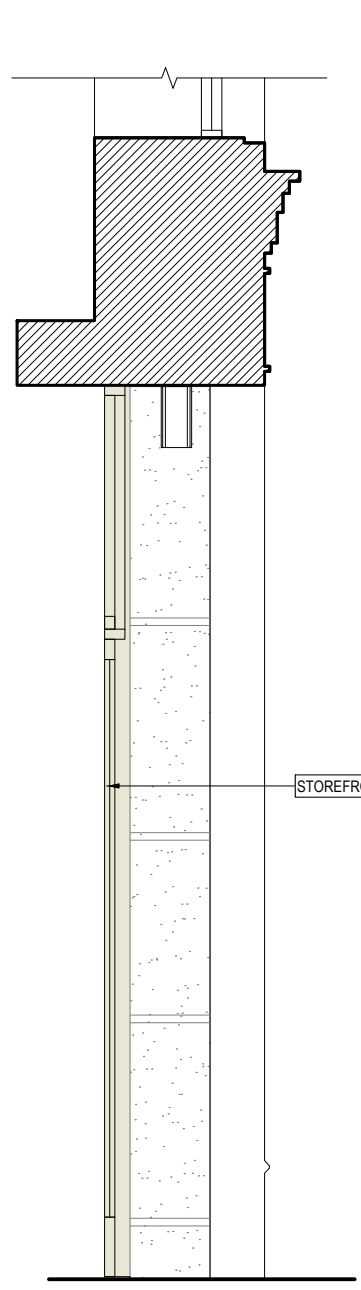
3 Storefront 2 Section- Looking East



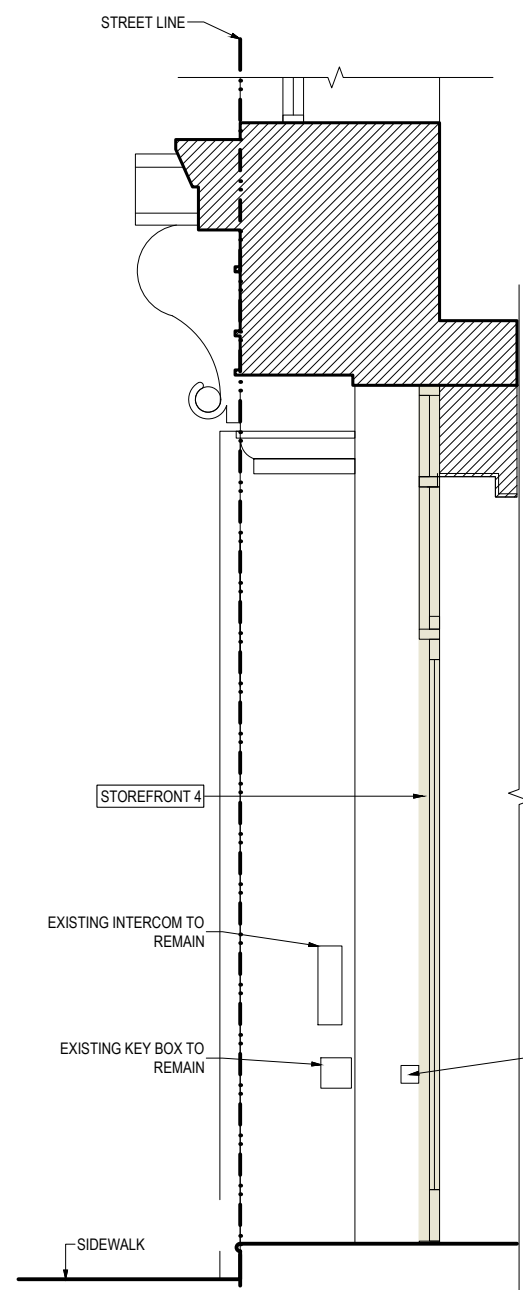
4 Storefront 2 Section- Looking West



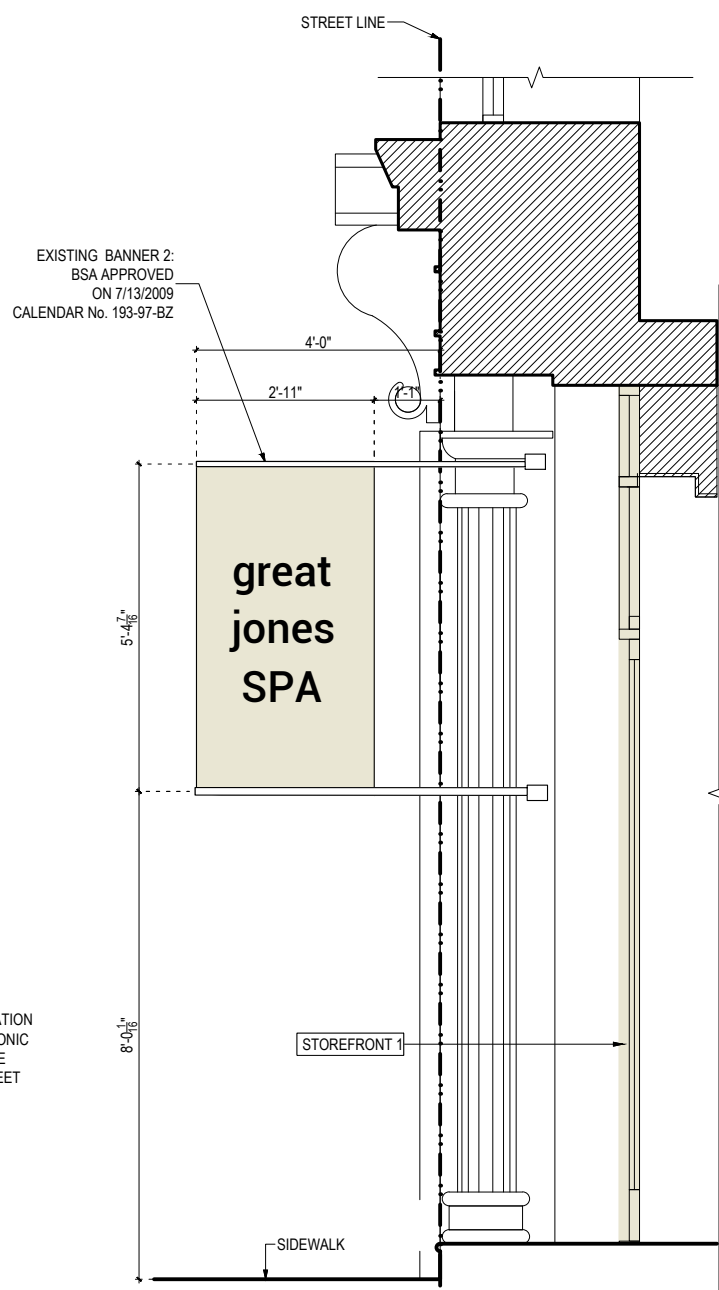
5 Storefront 3 Section- Looking East



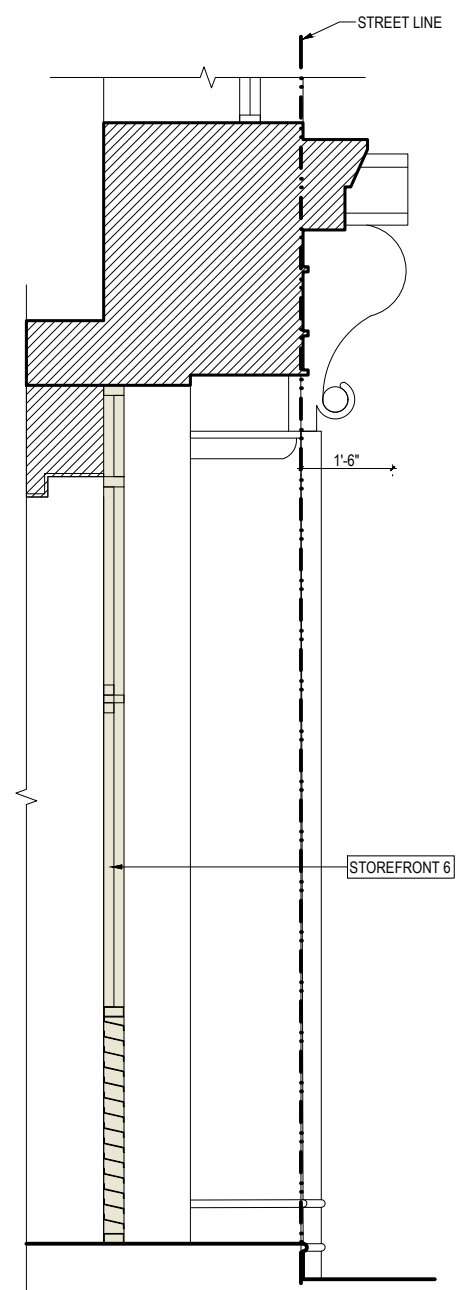
6 Storefront 3 Section- Looking West



6A Storefront 4 Section- Looking East



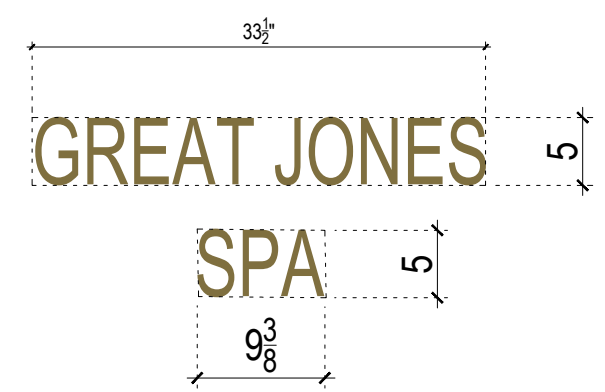
7 Storefront 5 Section- Looking East



8 Storefront 6 Section- Looking West

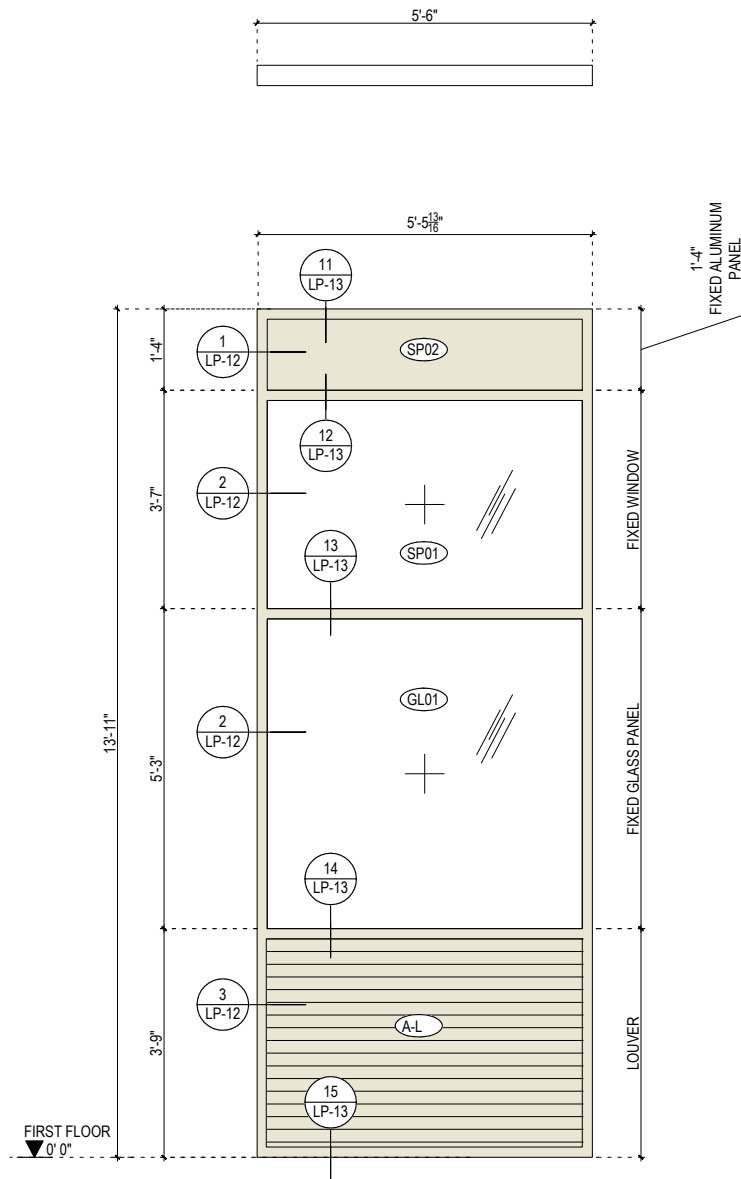
MATERIAL LEGEND

	ALUMINUM PANELS
	DIAMOND PLATE
	NEW ALUMINUM STOREFRONT FRAME
	BACK PAINTED GLASS

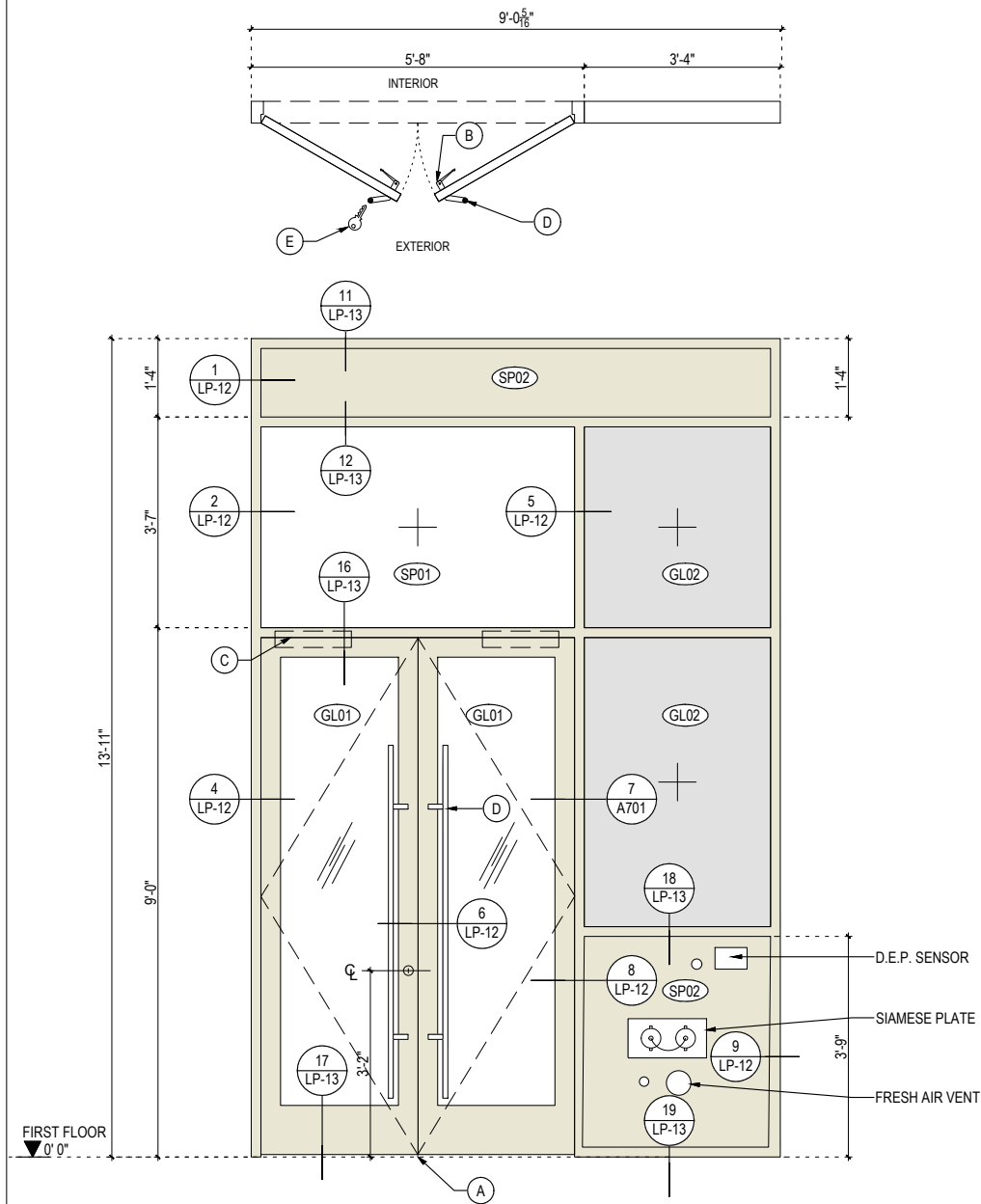


9 Forward Cut Vinyl- Elevation
1" = 1'-0"

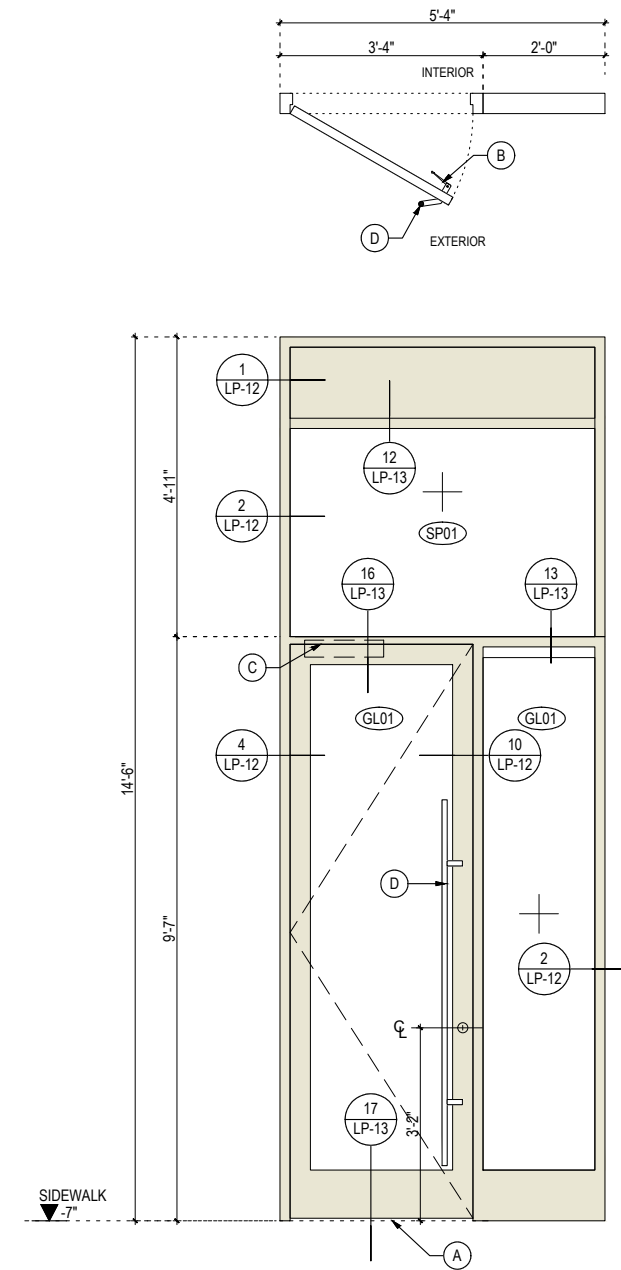
Type: Storefront 1



Type: Storefront 2 (Commercial entrance)



Type: Storefront 3 (Emergency Egress)



LEGEND

GL01	INSULATED CLEAR GLASS: OUTER PANE: FULLY TEMPERED GLASS INNER PANE: FULLY TEMPERED GLASS
GL02	INSULATED BACK PAINTED GLASS OUTER PANE: FULLY TEMPERED GLASS INNER PANE: FULLY TEMPERED GLASS COLOR T.B.D.
SP01	INSULATED SPANDREL CLEAR GLASS: OUTER PANE: FULLY TEMPERED GLASS INNER PANE: FULLY TEMPERED GLASS
SP02	1" INSULATED ALUMINUM PANEL
A-L	ALUMINUM LOUVER WITH INSECT SCREEN
A-TR1	ALUMINUM DECORATIVE TRIM AT INTERIOR MULLIONS
A-TR2	ALUMINUM DECORATIVE TRIM AT PERIMETER FRAME

MATERIAL LEGEND

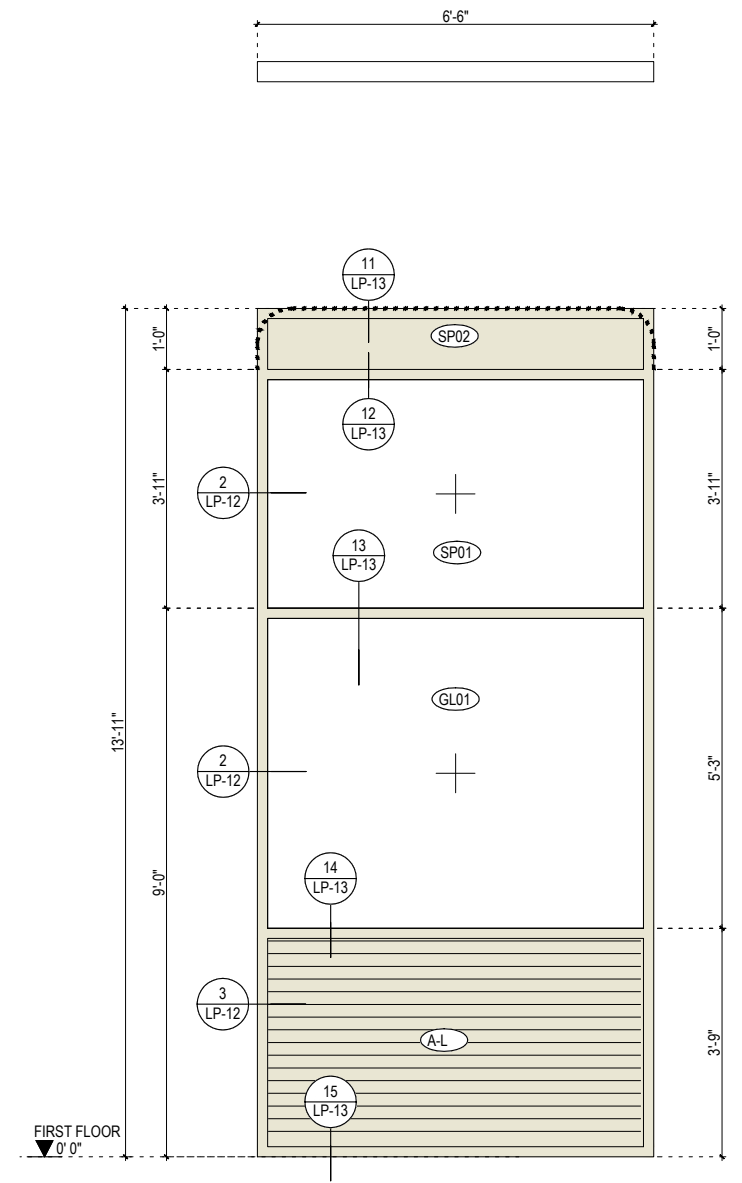
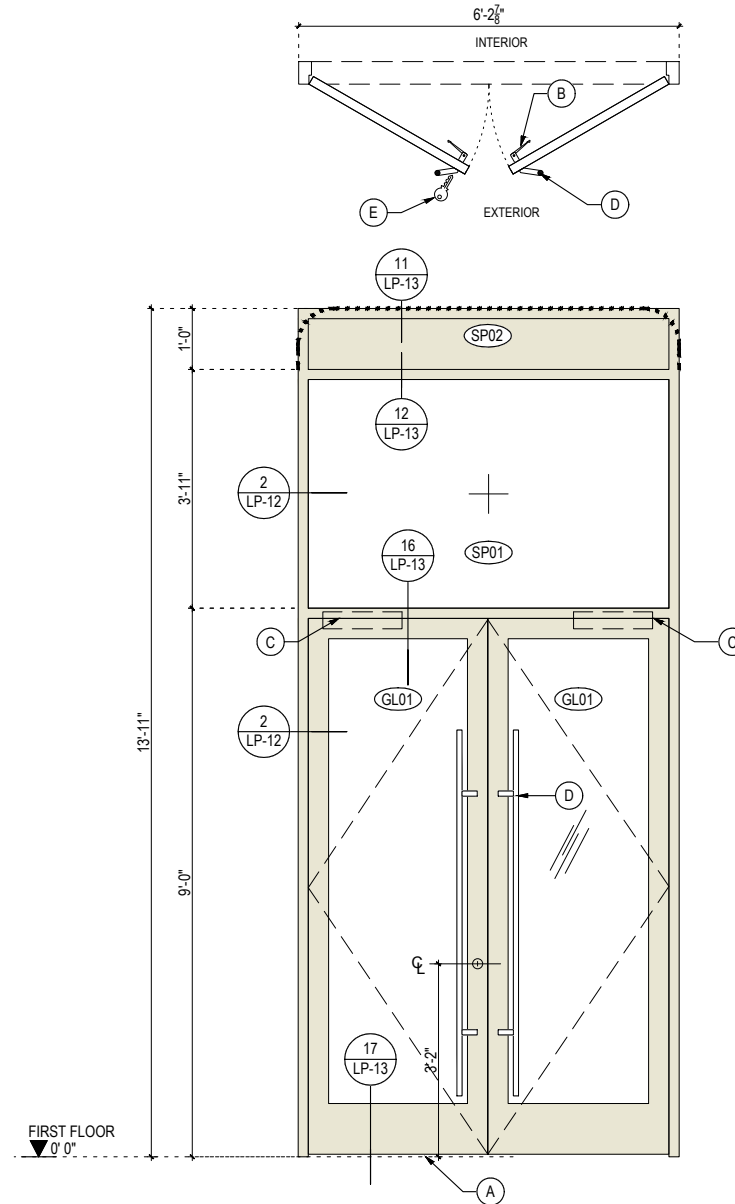
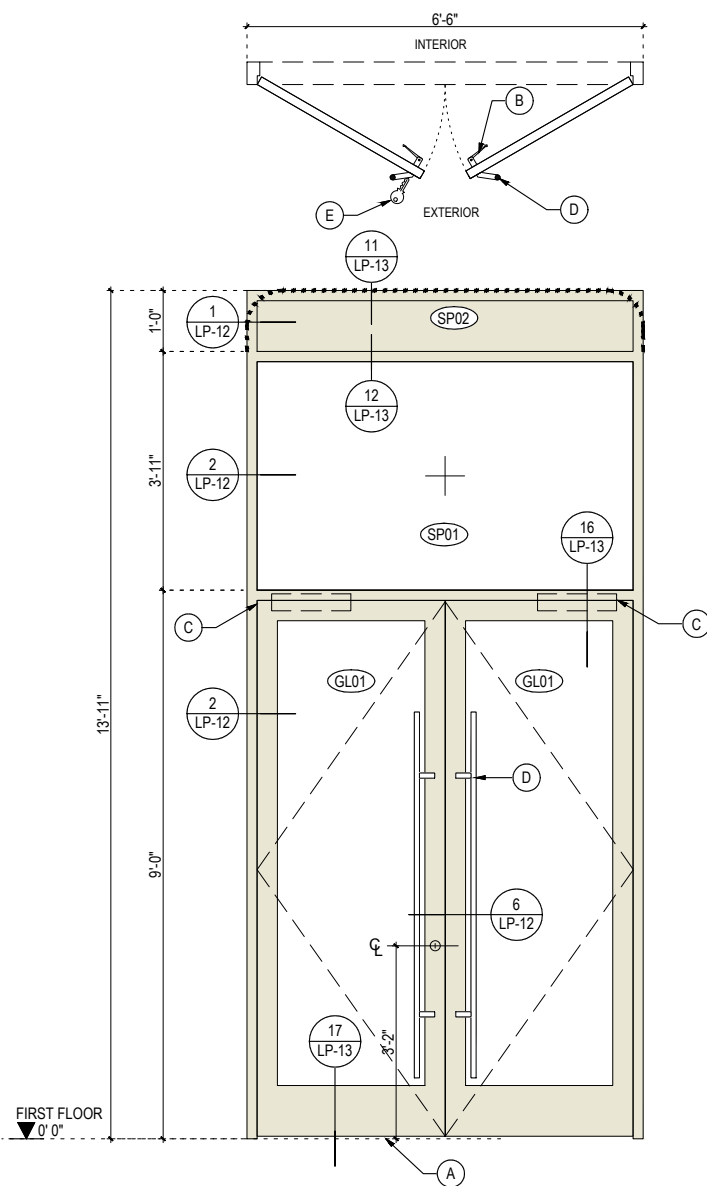
	ALUMINUM LOUVERS
	ALUMINUM PANELS
	ALUMINUM COLOR: RAL 9010
	BACK PAINTED GLASS, COLOR TO MATCH EXISTING FACADE COLOR OF CAST IRON PILARS

Type: Storefront 4 (Residential entrance)

Type: Storefront 5 (Commercial entrance)

Type: Storefront 6

NOTES
1. PROVIDE ELECTRIC STRIKE

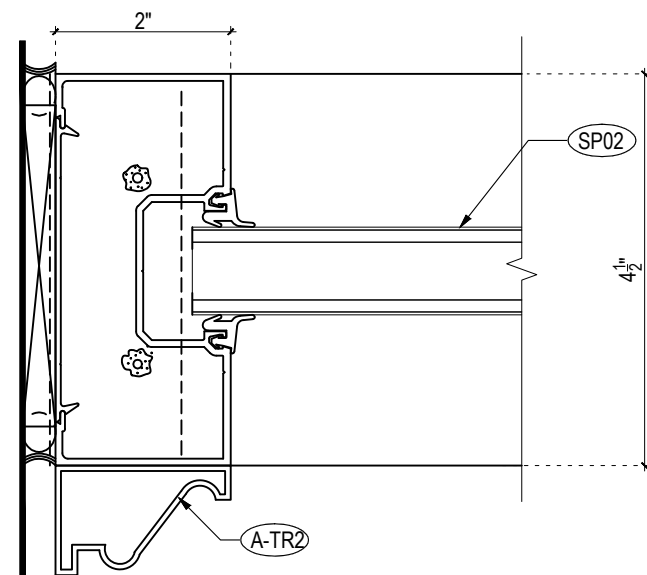


LEGEND

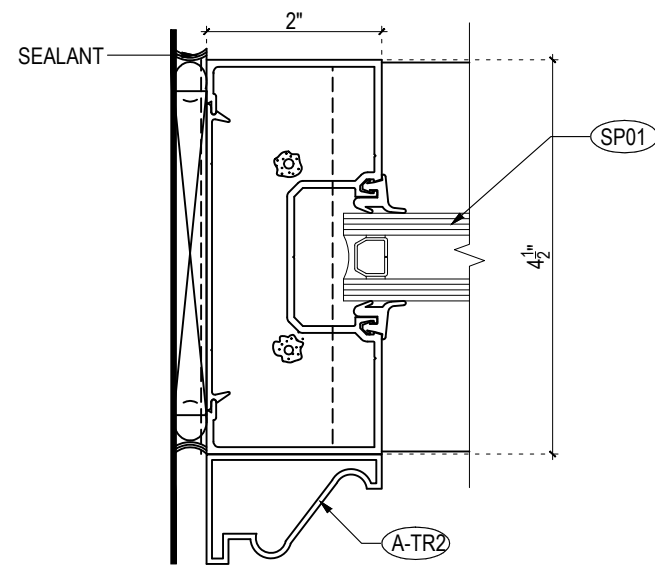
GL01	INSULATED CLEAR GLASS: OUTER PANE: FULLY TEMPERED GLASS INNER PANE: FULLY TEMPERED GLASS
GL02	INSULATED BACK PAINTED GLASS OUTER PANE: FULLY TEMPERED GLASS INNER PANE: FULLY TEMPERED GLASS COLOR T.B.D.
SP01	INSULATED SPANDREL CLEAR GLASS: OUTER PANE: FULLY TEMPERED GLASS INNER PANE: FULLY TEMPERED GLASS
SP02	1" INSULATED ALUMINUM PANEL
A-L	ALUMINUM LOUVER WITH INSECT SCREEN
A-TR1	ALUMINUM DECORATIVE TRIM AT INTERIOR MULLIONS
A-TR2	ALUMINUM DECORATIVE TRIM AT PERIMETER FRAME

MATERIAL LEGEND

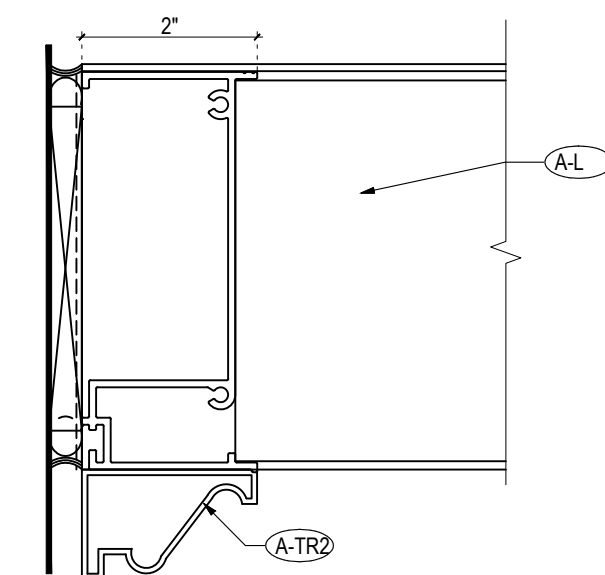
	ALUMINUM LOUVERS
	ALUMINUM PANELS
	ALUMINUM COLOR: RAL 9010
	BACK PAINTED GLASS, COLOR TO MATCH EXISTING FACADE COLOR OF CAST IRON PILARS



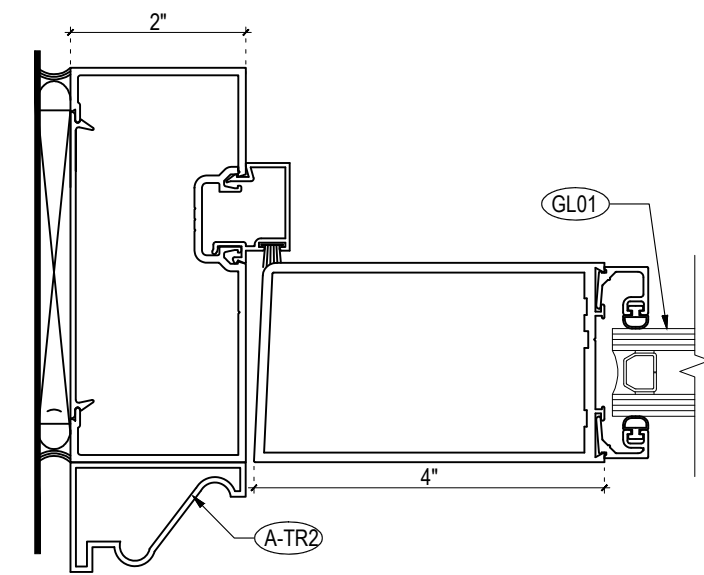
1 WINDOW JAMB PLAN DETAIL



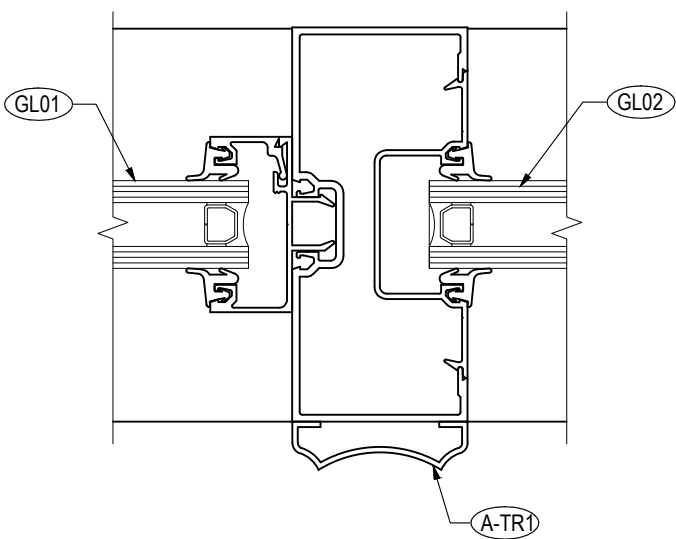
2 WINDOW JAMB PLAN DETAIL



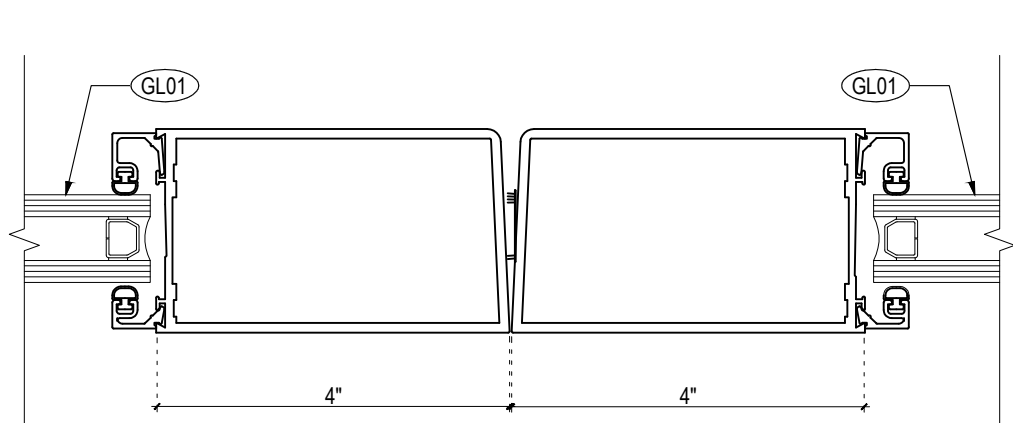
3 LOUVER JAMB PLAN DETAIL



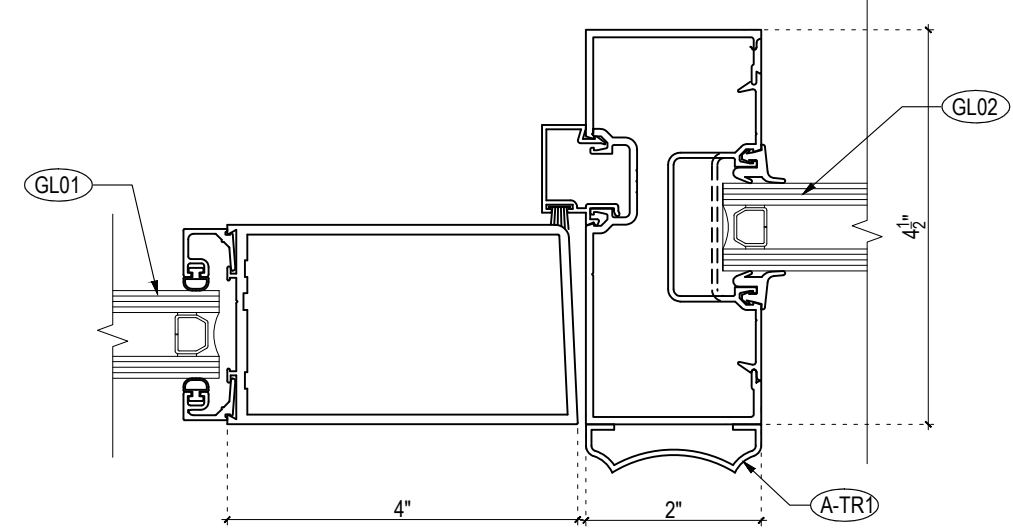
4 DOOR JAMB PLAN DETAIL



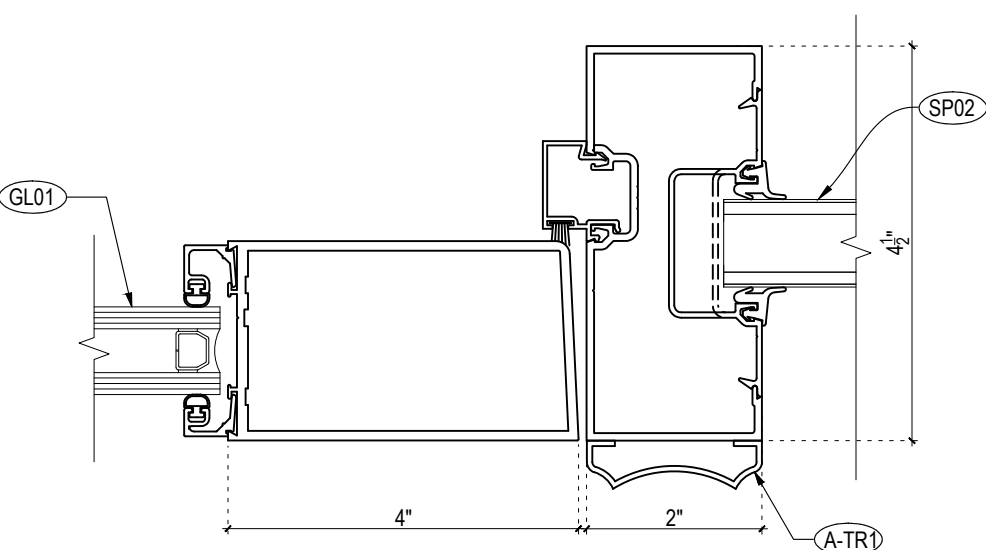
5 MULLION JAMB PLAN DETAIL



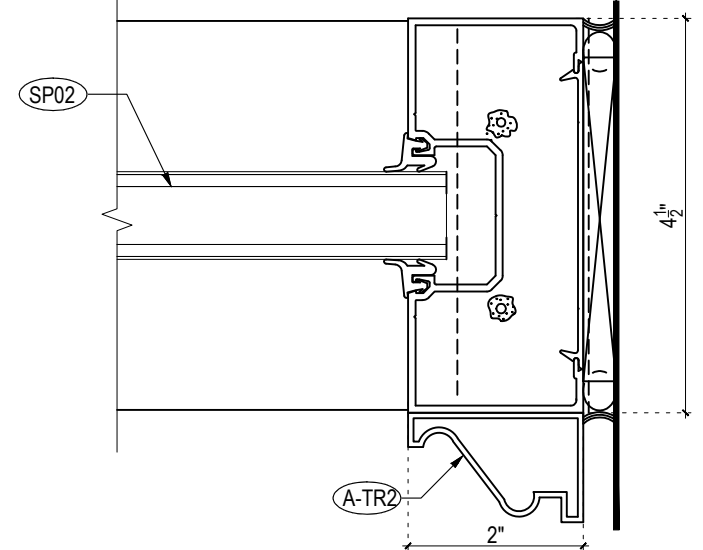
6 DOUBLE DOOR CENTER JAMB PLAN DETAIL



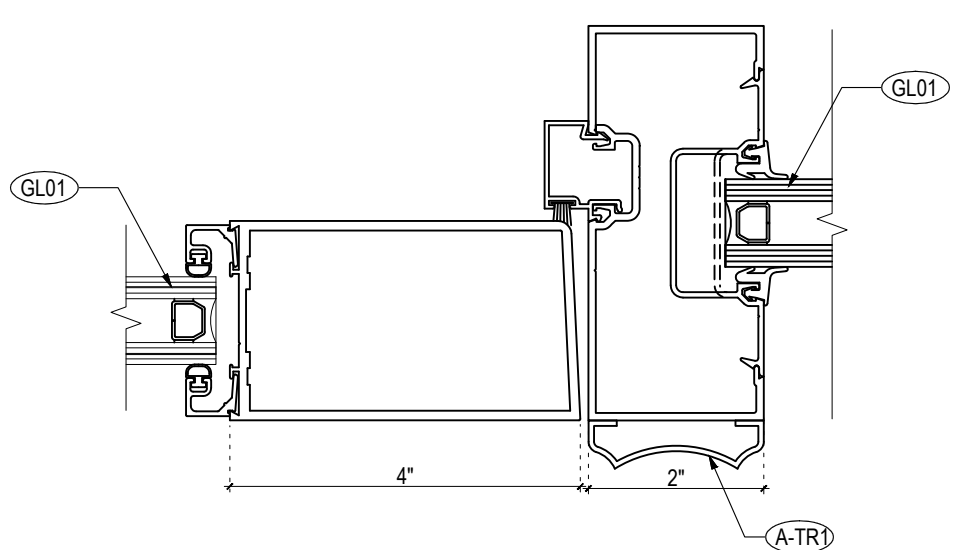
7 DOOR JAMB PLAN DETAIL



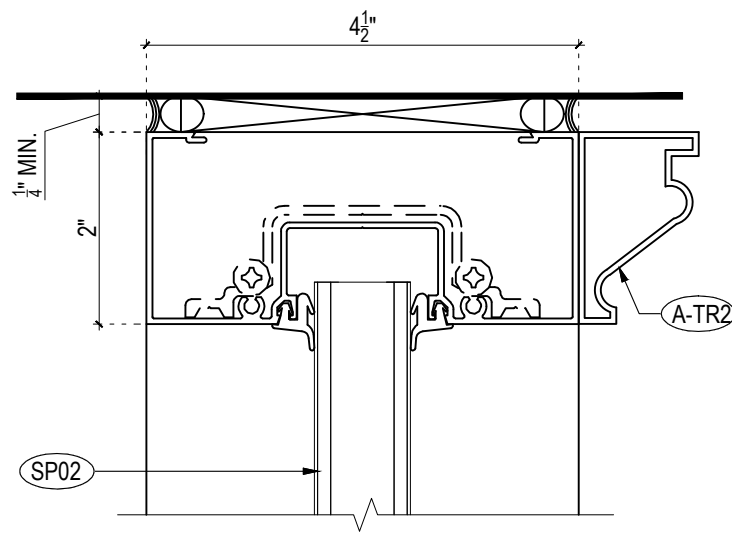
8 DOOR JAMB PLAN DETAIL



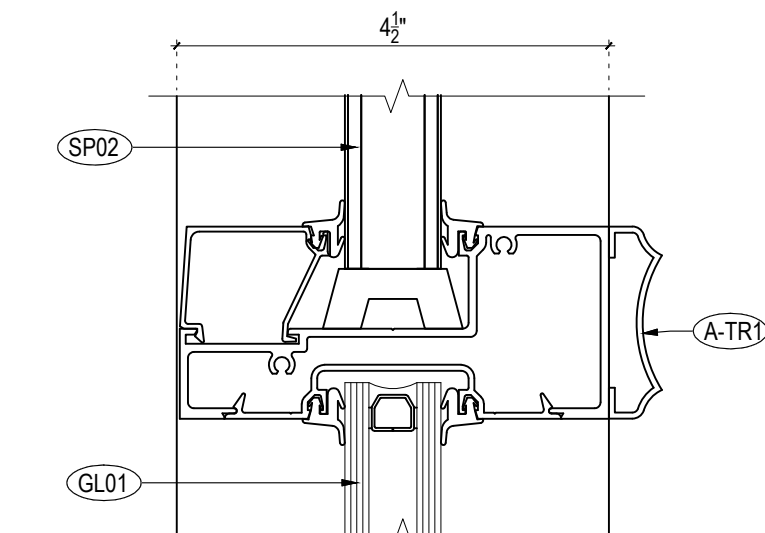
9 WINDOW JAMB PLAN DETAIL



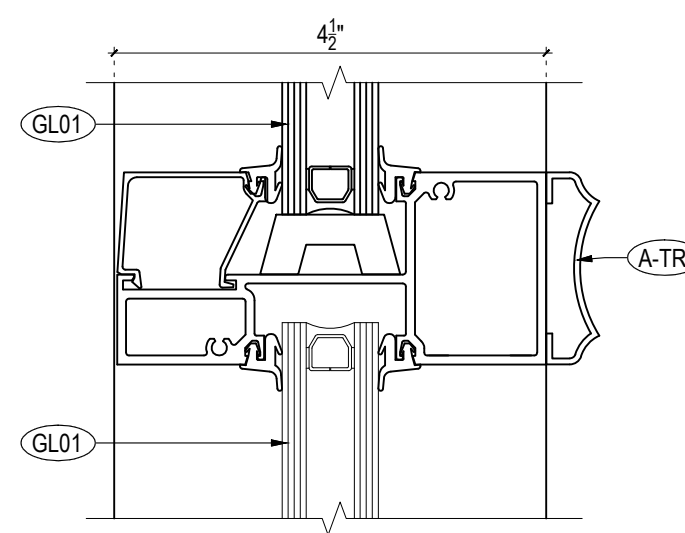
10 DOOR JAMB PLAN DETAIL



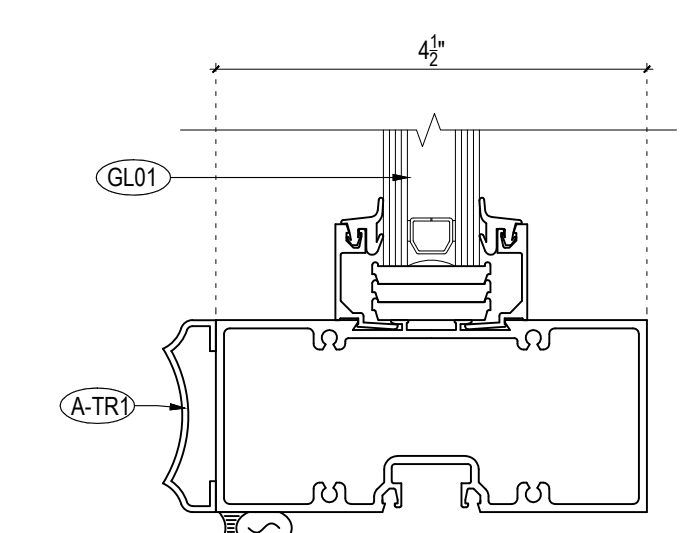
11 WINDOW HEAD SECTION DETAIL



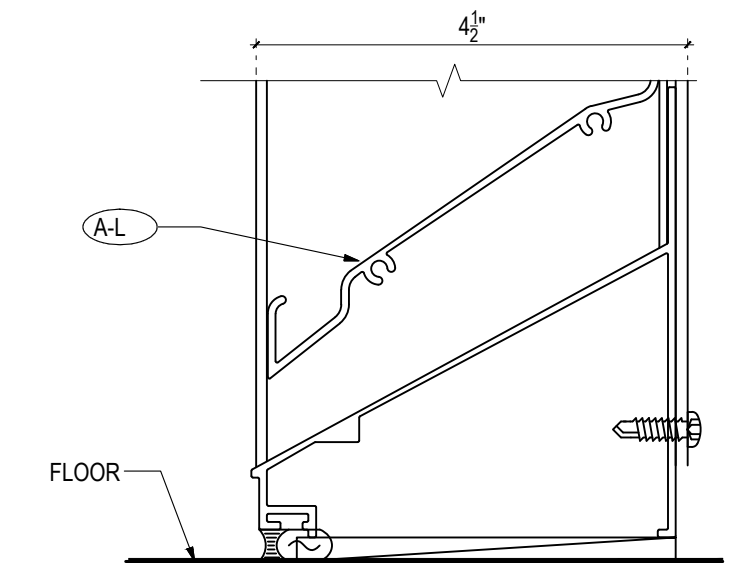
12 WINDOW MULLION SECTION DETAILS



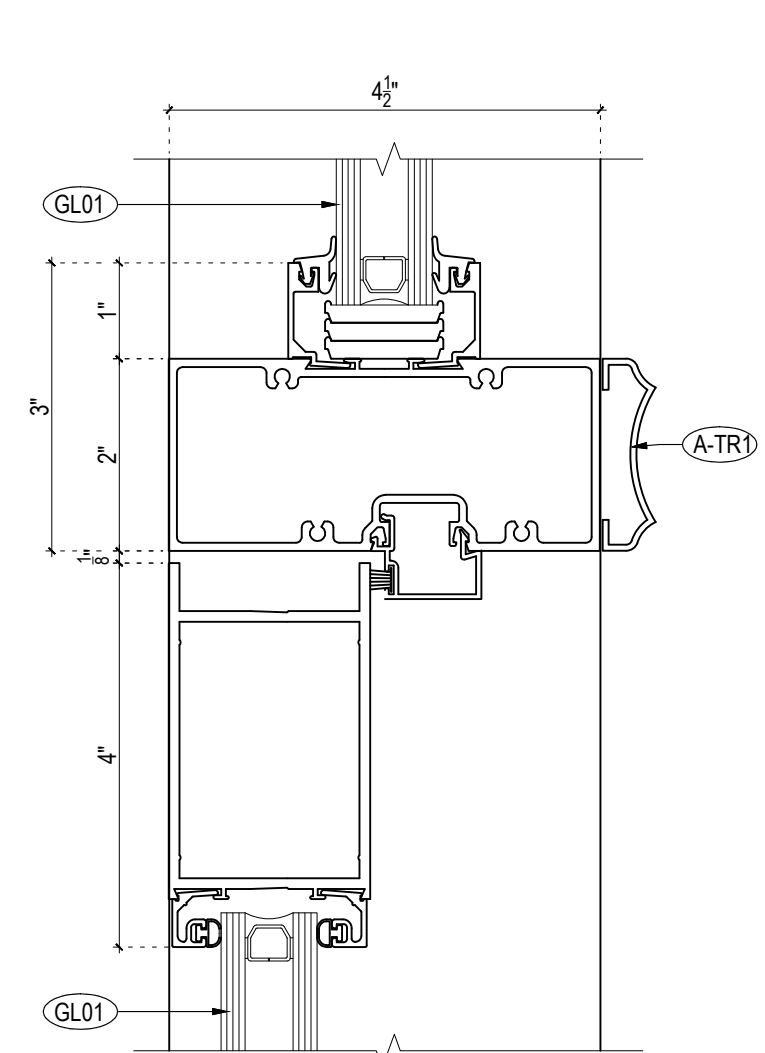
13 WINDOW MULLION SECTION DETAIL



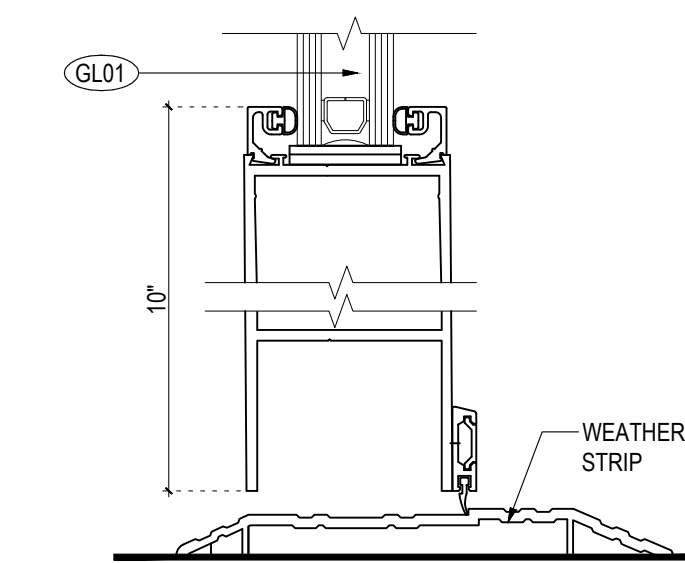
14 WINDOW SILL SECTION DETAIL/ LOUVER



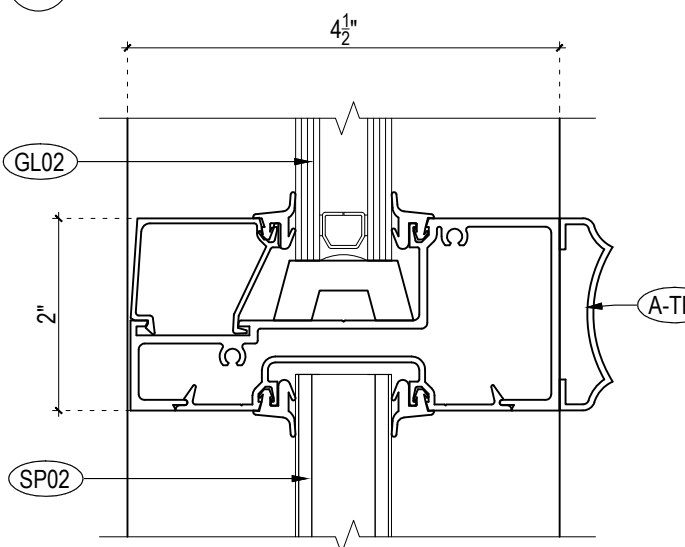
15 LOUVER SILL SECTION DETAIL



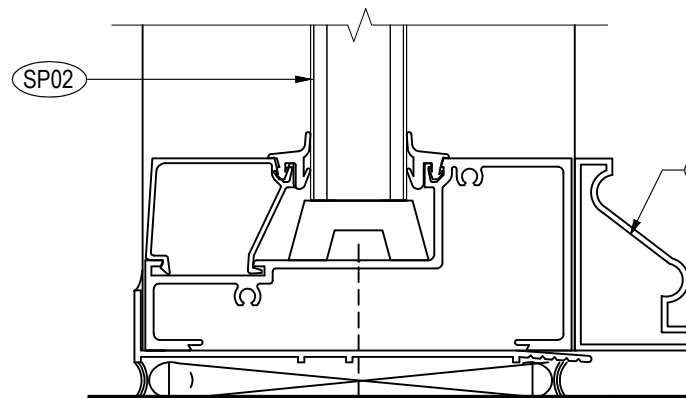
16 DOOR HEAD DETAIL SECTION



17 DOOR SILL SECTION DETAIL



18 WINDOW MULLION SECTION DETAIL



19 WINDOW SILL SECTION DETAIL

LEGEND

GL01	INSULATED CLEAR GLASS: OUTER PANE: FULLY TEMPERED GLASS INNER PANE: FULLY TEMPERED GLASS
GL02	INSULATED BACK PAINTED GLASS OUTER PANE: FULLY TEMPERED GLASS INNER PANE: FULLY TEMPERED GLASS COLOR T.B.D.
SP01	INSULATED SPANDREL CLEAR GLASS: OUTER PANE: FULLY TEMPERED GLASS INNER PANE: FULLY TEMPERED GLASS
SP02	1" INSULATED ALUMINUM PANEL
A-L	ALUMINUM LOUVER WITH INSECT SCREEN
A-TR1	ALUMINUM DECORATIVE TRIM AT INTERIOR MULLIONS
A-TR2	ALUMINUM DECORATIVE TRIM AT PERIMETER FRAME



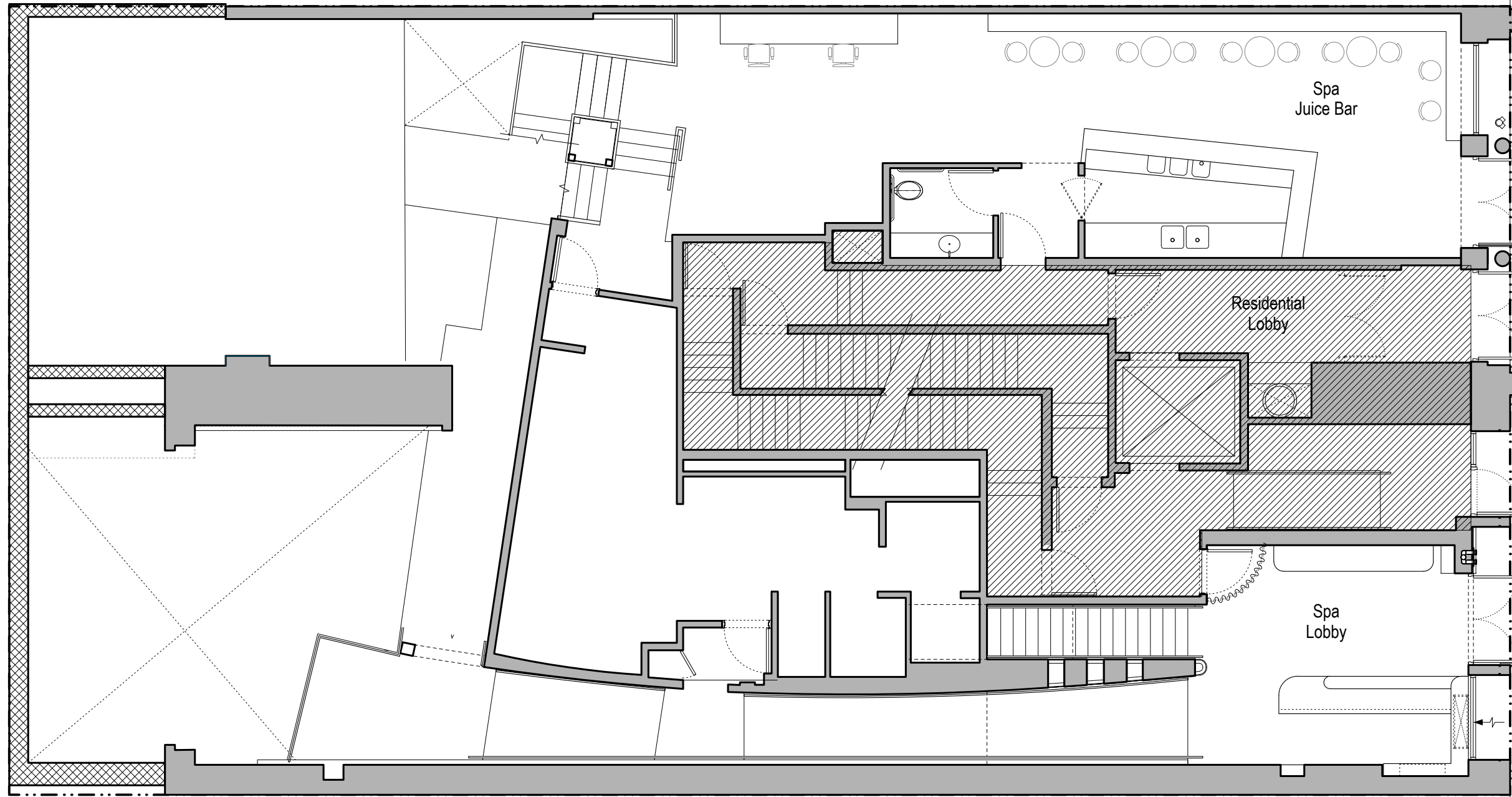
CLOSE UP OF CURRENT CONDITIONS AT FIRST FLOOR
2023



PROPOSED CONDITIONS

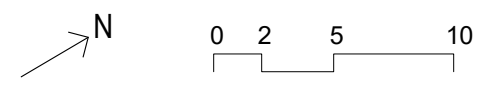


PROPOSED CONDITIONS



GREAT JONES STREET

1 FIRST FLOOR
1/8" = 1'-0"



December 3, 2024
Public Hearing

The current proposal is:

Preservation Department – Item 4, LPC-24-08508

27-29 Great Jones Street – NoHo Historic District Extension Borough of Manhattan

To testify virtually, please join Zoom

Webinar ID: 161 083 9543

Passcode: 620822

By Phone: 646-558-8656 (NY)

877-853-5257 (Toll free) US

888-475-4499 (Toll free)

Note: If you want to testify virtually on an item, join the Zoom webinar at the agenda's "Be Here by" time (about an hour in advance). When the Chair indicates it's time to testify, "raise your hand" via the Zoom app if you want to speak (*9 on the phone). Those who signed up in advance will be called first.