

FORENSIC BIOLOGY PROTOCOLS FOR FORENSIC STR ANALYSIS

GeneMarker Manual		Document ID: 6311
Status: Published		
DATE EFFECTIVE 06/25/2018	APPROVED BY Nuclear DNA Technical Leader	PAGE 1 OF 36

GeneMarker v2.9.0 Manual

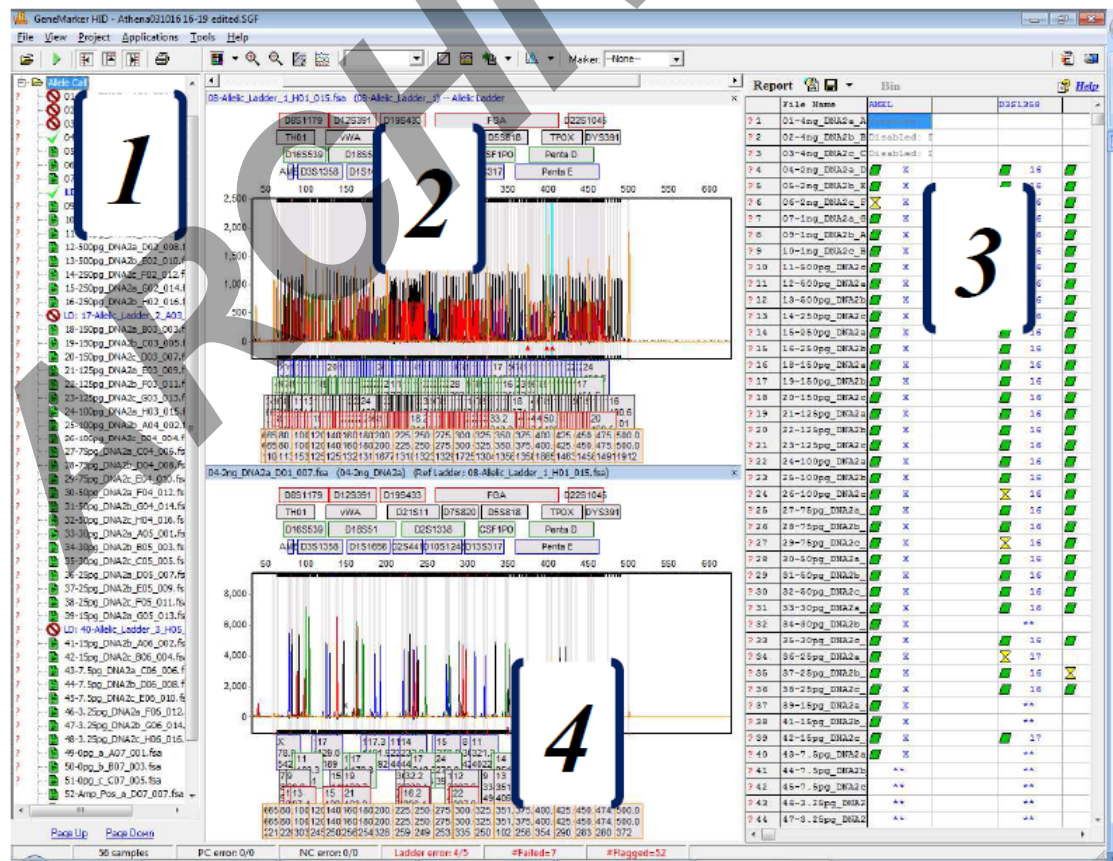
1 General Overview

1.1 Main Analysis Window

1.1.1 There are four major displays in the main analysis window.

- 1 Navigator; Sample File Tree
- 2 Electropherograms
- 3 Report; Report Table
- 4 Project Summary

1.1.2 See [HELPFUL ICONS INDEX](#) for further details.



Controlled versions of Department of Forensic Biology Manuals only exist in the Forensic Biology Qualtrax software. All printed versions are non-controlled copies.




© NYC OFFICE OF CHIEF MEDICAL EXAMINER

FORENSIC BIOLOGY PROTOCOLS FOR FORENSIC STR ANALYSIS

GeneMarker Manual		
Status: Published		Document ID: 6311
DATE EFFECTIVE 06/25/2018	APPROVED BY Nuclear DNA Technical Leader	PAGE 2 OF 36

1.2 Navigator; Sample File Tree

- 1.2.1 This view lists all the samples that are included in the project. Prefixes **LD**, **PC** and **NC** are labeling the **allelic ladder**, **positive control** and **negative control**
- 1.2.2 The sheet icon to the left of the sample name indicated the quality of the internal lane standard (ILS) with the following color/code:

- **Green** = High Lane Quality; Passing Size Standard 
- **Yellow** = Requires Verification 
- **Red strike through** = No Sizing Occurrence; failed to call size 
- **Red Question Mark** = one or more quality criteria are not met based on the analysis parameters; See [Quality Reasons Index](#) for more details.

1.3 Project Summary

- 1.3.1 This bar located at the bottom of the main analysis screen summarizes the project as well as alerts the analyst to samples that did not pass analysis parameters.

New	22 samples	PC error: 1/1	NC error: 3/3	Ladder error: 0/1	#Failed=1	#Flagged=19
-----	------------	---------------	---------------	-------------------	-----------	-------------

- New reflects the data set is not a project that has been previously analyzed.
 - If the first column reads Modified, the project was previously analyzed in the software.
 - The second column denotes the number of samples (including controls) contained in the data set.
 - Columns 3-5 indicate the number of controls in the data set that do not meet the quality criteria set in the software.
 - Column 6 denotes the number of samples that were disabled.
 - Column 7 denotes the overall number of samples, except the allelic ladder, that do not meet the quality criteria set in the software.
- 1.3.2 **NOTE:** Flagger features are an indication of potential failures. The ultimate decision of passing/failure is made by the analyst after further evaluation.

1.4 Calibration Chart Window

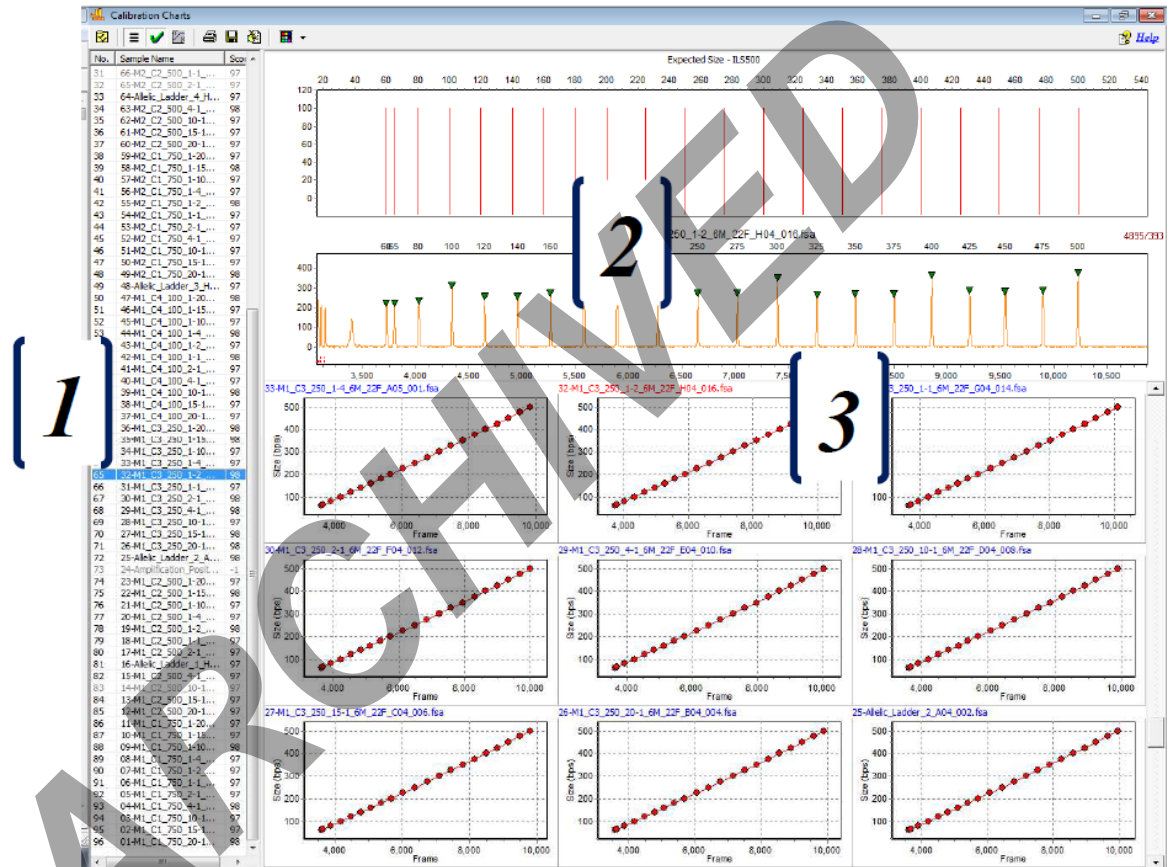
Controlled versions of Department of Forensic Biology Manuals only exist in the Forensic Biology Qualtrax software. All printed versions are non-controlled copies.

FORENSIC BIOLOGY PROTOCOLS FOR FORENSIC STR ANALYSIS

GeneMarker Manual		
Status:Published		Document ID: 6311
DATE EFFECTIVE 06/25/2018	APPROVED BY Nuclear DNA Technical Leader	PAGE 3 OF 36

1.4.1 There are three major displays in the calibration chart window.

- 1 Sample List
- 2 Size Standard Template
- 3 Sample ILS



1.5 Sample List

1.5.1 This view lists all the samples that were processed in the project. The **Score** column represents how well the size standard template and the sample ILS match. The closer the score is to 100, the better the match. The sample may fail automatically if the size standard is bad enough, or may have to be failed manually by the analyst.

1.6 Size Standard Template

1.6.1 The template highlights all the peaks that should be labeled in the corresponding sample ILS for easier comparison.

Controlled versions of Department of Forensic Biology Manuals only exist in the Forensic Biology Qualtrax software. All printed versions are non-controlled copies.

FORENSIC BIOLOGY PROTOCOLS FOR FORENSIC STR ANALYSIS

GeneMarker Manual		
Status: Published		Document ID: 6311
DATE EFFECTIVE 06/25/2018	APPROVED BY Nuclear DNA Technical Leader	PAGE 4 OF 36

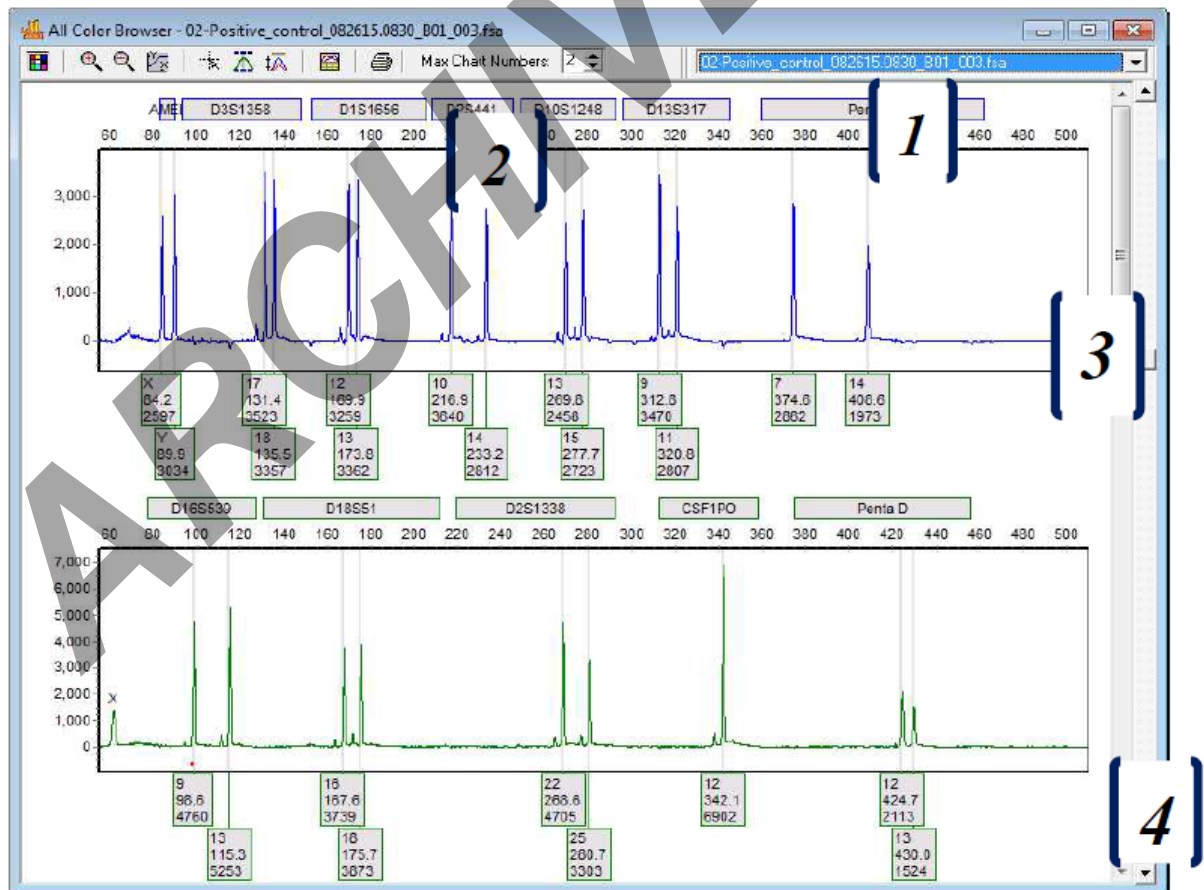
1.7 Samples ILS

1.7.1 The sample ILS displays the peaks that were detected. As well as the approximate start of the data analysis view, indicated by the dash line.

1.8 Browse by All Color Window

1.8.1 There are four features in the Browse by All Color that allow for straightforward review of the sample.

- 1 Sample Drop-Down
- 2 Max Chart Number
- 3 Scroll Within a Sample
- 4 Scroll Between Samples



Controlled versions of Department of Forensic Biology Manuals only exist in the Forensic Biology Qualtrax software. All printed versions are non-controlled copies.

FORENSIC BIOLOGY PROTOCOLS FOR FORENSIC STR ANALYSIS

GeneMarker Manual		
Status:Published		Document ID: 6311
DATE EFFECTIVE 06/25/2018	APPROVED BY Nuclear DNA Technical Leader	PAGE 5 OF 36

1.9 Sample Drop-Down

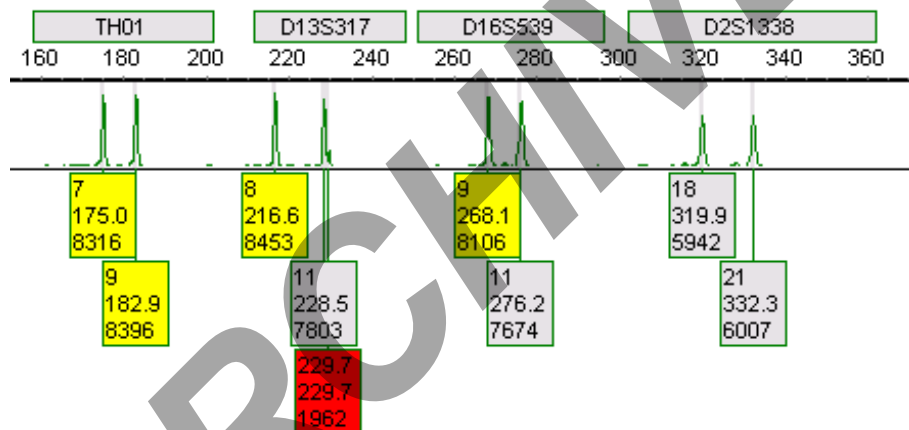
1.9.1 The sample drop-down lists all the samples within a project. A user can move between samples by clicking on the sample name instead of scrolling through all electropherograms.

1.10 Max Chart Number

1.10.1 Max chart number views each sample by the number of dye lanes as per the user's needs during sample analysis.

1.11 Allele Labels


1.11.1 When analyzing samples in the **Main Analysis** window or the **Browse by All Color** window, alleles may be colored yellow or red.



1.11.2 This indicates that one or more quality criteria have not been met in the software. See [Quality Reasons Index](#) for more details.

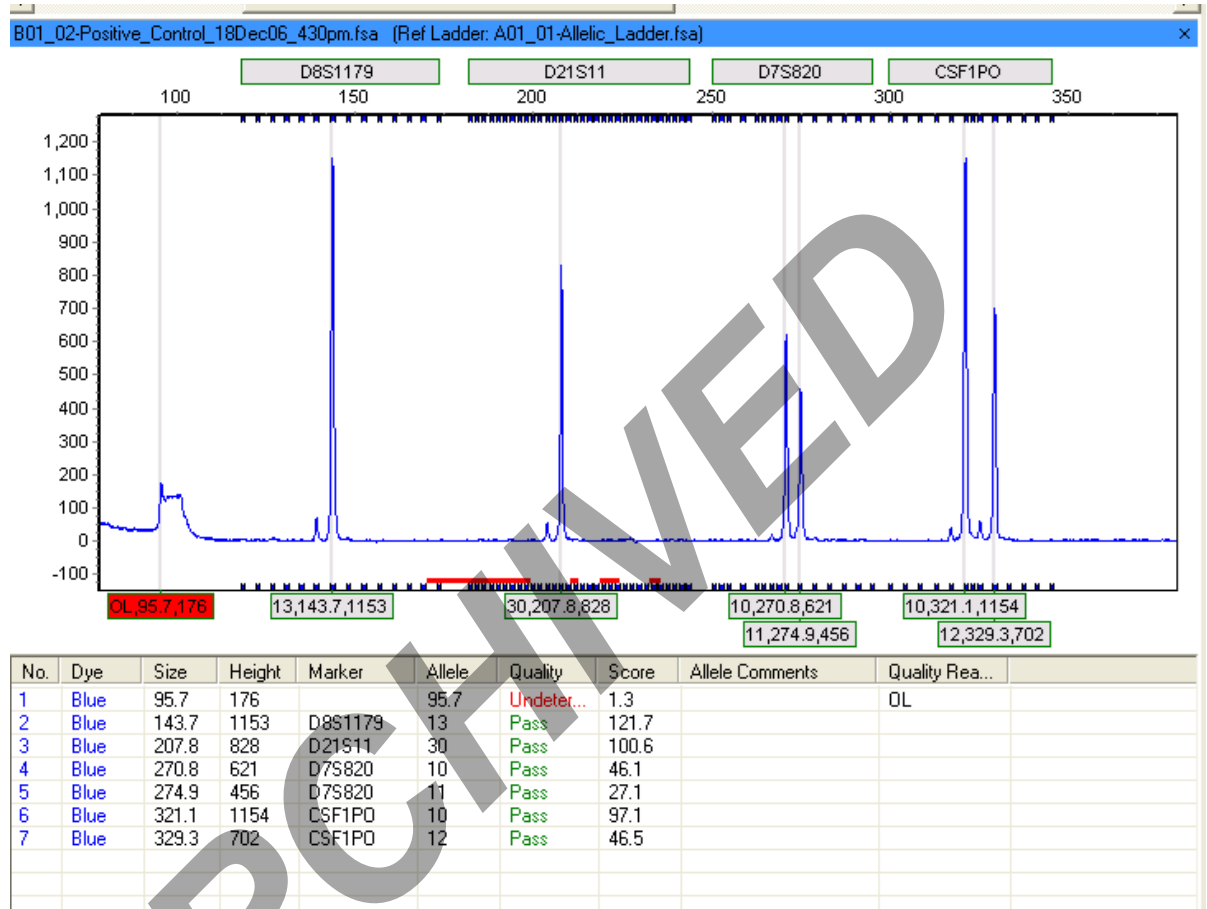
1.11.3 **NOTE:** Flagger features are an indication of potential artifacts and/or allelic imbalance, or peak saturation. The ultimate decision of passing/failure is made by the analyst after further evaluation.

1.12 Peak Table

1.12.1 When analyzing samples in the **Main Analysis** window or the **Browse by All Color** window, a peak table maybe added to supplement analysis by clicking Show Chart/Table icon 

FORENSIC BIOLOGY PROTOCOLS FOR FORENSIC STR ANALYSIS

GeneMarker Manual		
Status: Published	Document ID: 6311	
DATE EFFECTIVE 06/25/2018	APPROVED BY Nuclear DNA Technical Leader	PAGE 6 OF 36



1.12.2 This table will indicate to an analyst which alleles were flagged and which quality reason was triggered. See [PEAK TABLE OPTIONS INDEX](#) for further details.

2 Load Data

2.1 To start your project, go to **File** → **Open Data** → **Add**

2.1.1 Navigate to the network folder containing the data files (i.e. the .fsa files) to be analyzed.

2.1.2 Select files to add (include only one ladder per project)

2.1.3 Hold **Ctrl** key to select multiple files

2.1.4 If analyzing all files hold **Ctrl** and **A** keys

2.1.5 Select **Open**

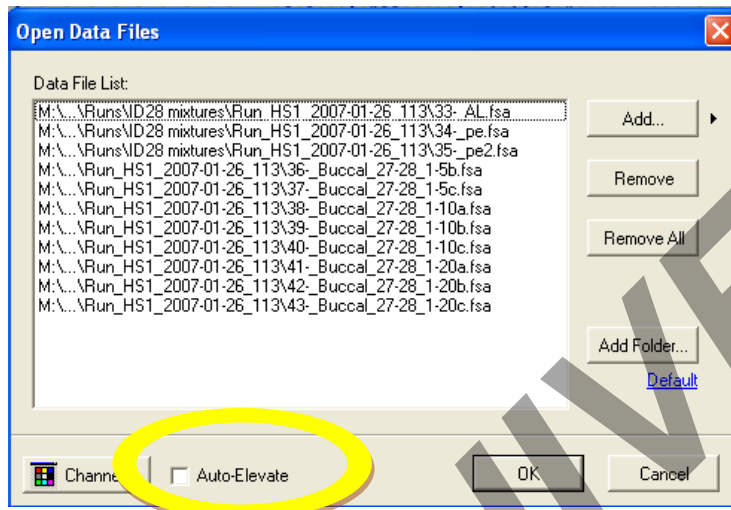
Controlled versions of Department of Forensic Biology Manuals only exist in the Forensic Biology Qualtrax software. All printed versions are non-controlled copies.

FORENSIC BIOLOGY PROTOCOLS FOR FORENSIC STR ANALYSIS

GeneMarker Manual		
Status: Published	Document ID: 6311	
DATE EFFECTIVE 06/25/2018	APPROVED BY Nuclear DNA Technical Leader	PAGE 7 OF 36

2.1.6 Ensure correct files are added to list

2.1.7 **Deselect** Auto-Elevate



2.1.8 Select **OK**

2.2 Ensure that prefixes **LD**, **PC** and **NC** are labeling the **allelic ladder**, **positive control** and **negative control**, respectively, in the **Sample File Tree**.

2.2.1 If they are not, right click on the sample name in the Sample File Tree → Set Sample Type → Select appropriate sample type

2.2.2 **Click Run Project** located in the top toolbar.



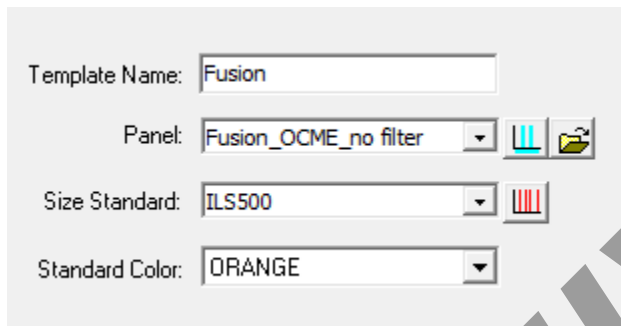
FORENSIC BIOLOGY PROTOCOLS FOR FORENSIC STR ANALYSIS

GeneMarker Manual		
Status: Published		Document ID: 6311
DATE EFFECTIVE 06/25/2018	APPROVED BY Nuclear DNA Technical Leader	PAGE 8 OF 36

3 Run Wizard

3.1 In Template Selection window, select the appropriate existing template. If “Last Template” is displayed in Template Name field, ensure that the appropriate Panel is listed for your analysis.

3.1.1 PowerPlex Fusion® LIZ - EVIDENCE



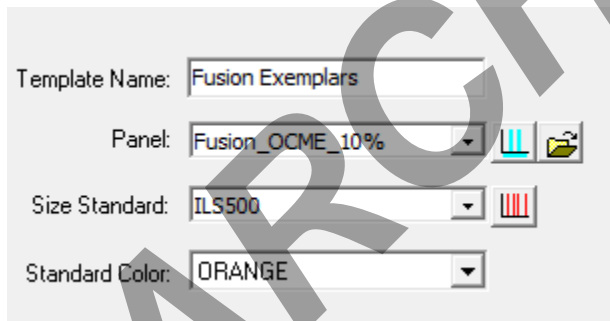
Template Name: Fusion

Panel: Fusion_OCME_no filter

Size Standard: ILS500

Standard Color: ORANGE

3.1.2 PowerPlex Fusion® LIZ - EXEMPLARS



Template Name: Fusion Exemplars

Panel: Fusion_OCME_10%

Size Standard: ILS500

Standard Color: ORANGE

FORENSIC BIOLOGY PROTOCOLS FOR FORENSIC STR ANALYSIS

GeneMarker Manual		
Status: Published	Document ID: 6311	
DATE EFFECTIVE 06/25/2018	APPROVED BY Nuclear DNA Technical Leader	PAGE 9 OF 36

3.1.3 Yfiler® LIZ

Template Name: Yfiler

Panel: Yfiler_OCME

Size Standard: LIZ_Yfiler

Standard Color: ORANGE

3.1.4 Click Next

3.2 In the Data Process window, ensure the following settings are used based on amplification kit.

3.2.1 PowerPlex Fusion® / PowerPlex Fusion®_STRmix™

Run Wizard

Data Process - HID Analysis

Set data process options

Raw Data Analysis

- Auto Range (frame)
- Start: 0 End: 10000
- Smooth Enhanced Smooth
- Baseline Subtraction:
- Superior Classic Enhanced
- Pull-up Correction Spike Removal
- Saturation Detection Saturation Repair

Allele Call

- Auto Range (bps)
- Start: 55 End: 510
- Score Filter
- Peak Detection Threshold: ?
- Min Intensity: 50 Max Intensity: 32760
- Percentage > 0 Global Max

Note: Use Panel Editor to set Min Intensity and % Global Max for peaks within Markers

Size Call

- Local Southern Cubic Spline

Save Delete << Back Next >> Cancel

Controlled versions of Department of Forensic Biology Manuals only exist in the Forensic Biology Qualtrax software. All printed versions are non-controlled copies.

© NYC OFFICE OF CHIEF MEDICAL EXAMINER

FORENSIC BIOLOGY PROTOCOLS FOR FORENSIC STR ANALYSIS

GeneMarker Manual		
Status: Published		Document ID: 6311
DATE EFFECTIVE 06/25/2018	APPROVED BY Nuclear DNA Technical Leader	PAGE 10 OF 36

3.2.2 PowerPlex Fusion®_EXEMPLARS

Run Wizard
Data Process - HID Analysis
Set data process options

Raw Data Analysis

- Auto Range (frame)
Start: 0 End: 10000
- Smooth Enhanced Smooth
- Baseline Subtraction:
 - Superior Classic Enhanced
 - Pull-up Correction Spike Removal
 - Saturation Detection Saturation Repair
- Size Call:
 - Local Southern Cubic Spline

Allele Call

- Auto Range (bps)
Start: 55 End: 510
- Score Filter
- Peak Detection Threshold: ?
- Min Intensity: 50 Max Intensity: 32760
- Percentage > 10 Global Max
- Note: Use Panel Editor to set Min Intensity and % Global Max for peaks within Markers

Buttons: Save, Delete, << Back, Next >>, Cancel

3.2.3 Yfiler®

Run Wizard
Data Process - HID Analysis
Set data process options

Raw Data Analysis

- Auto Range (frame)
Start: 2300 End: 9000
- Smooth Enhanced Smooth
- Baseline Subtraction:
 - Superior Classic Enhanced
 - Pull-up Correction Spike Removal
 - Saturation Detection Saturation Repair
- Size Call:
 - Local Southern Cubic Spline

Allele Call

- Auto Range (bps)
Start: 75 End: 410
- Score Filter
- Peak Detection Threshold: ?
- Min Intensity: 75 Max Intensity: 20000
- Percentage > 8 Global Max
- Note: Use Panel Editor to set Min Intensity and % Global Max for peaks within Markers

Buttons: Save, Delete, << Back, Next >>, Cancel

3.3 Click Next

Controlled versions of Department of Forensic Biology Manuals only exist in the Forensic Biology Qualtrax software. All printed versions are non-controlled copies.

FORENSIC BIOLOGY PROTOCOLS FOR FORENSIC STR ANALYSIS

GeneMarker Manual		
Status: Published		Document ID: 6311
DATE EFFECTIVE 06/25/2018	APPROVED BY Nuclear DNA Technical Leader	PAGE 11 OF 36

3.4 In the Additional Settings window, ensure the following settings are used:

3.4.1 PowerPlex Fusion®/ PowerPlex Fusion® EXEMPLARS/ PowerPlex Fusion®_STRmix™

Run Wizard
Additional Settings - HID Analysis
Set additional options related to the different analysis type

Allelic Ladder: NONE

Positive Control Template: PP_Fusion

Allele Evaluation
Peak Score:
Reject < 0.00 Check 1.00 < Pass

Mixture Evaluation
Valid Mixture Peak Percentage: 0 %
Min Mixture Marker Number: 3

Auto Select Best Ladder
Auto Panel Adjustment

Save Delete << Back Ok Cancel

3.4.2 Yfiler®

Run Wizard
Additional Settings - HID Analysis
Set additional options related to the different analysis type

Allelic Ladder: NONE

Positive Control Template: Yfiler MPC

Allele Evaluation
Peak Score:
Reject < 0.00 Check 1.00 < Pass

Mixture Evaluation
Valid Mixture Peak Percentage: 0 %
Min Mixture Marker Number: 3

Auto Select Best Ladder
Auto Panel Adjustment

Save Delete << Back Ok Cancel

Controlled versions of Department of Forensic Biology Manuals only exist in the Forensic Biology Qualtrax software. All printed versions are non-controlled copies.

© NYC OFFICE OF CHIEF MEDICAL EXAMINER

FORENSIC BIOLOGY PROTOCOLS FOR FORENSIC STR ANALYSIS

GeneMarker Manual		
Status: Published		Document ID: 6311
DATE EFFECTIVE 06/25/2018	APPROVED BY Nuclear DNA Technical Leader	PAGE 12 OF 36

3.4.3 If **NONE** is listed under Positive control template → Select the Positive Control Template using the dropdown:

- For PowerPlex Fusion®/ PowerPlex Fusion® EXEMPLARS/ PowerPlex Fusion®_STRmix™ – PP_Fusion
- For Yfiler® - Yfiler MPC

3.4.4 **Note:** Do NOT click Save within the Data Process Window. This will overwrite the template for all analysts.

3.5 **Click OK** → Once data has finished processing **Click OK**


3.6 On the top left corner of the screen, **Click File** → **Click Save Project** → Navigate to desired folder and save project using the naming system based on the instrument, date, injection number(s), kit and analysis set (i.e. Newton090615 8-11U A)

4 Checking the Allelic Ladder

4.1 There are two areas in the **Main Analysis** window that indicate if the allelic ladder used for analysis has passed.

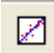
4.1.1 In the **Sample File Tree**, a red question mark next to the allelic ladder would indicate a potentially failed ladder.

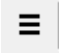
4.1.2 In the **Project Summary**, a ladder error would indicate a potential failed ladder.

4.2 Right click in the Sample File Tree → Click Select Max. Open the Browse by All Color Window icon . Visually confirm all expected alleles in the allelic ladder are present.

4.3 If the ladder used for analysis failed, click **File** from the menu bar → Click **Open Data** → Highlight the failed ladder from the Data File List → Click **Remove** → Click **Add...** → Navigate to the .fsa files → Select a different ladder for analysis → Click **Open** → Click **OK**. Return to [Load Data, 2.2](#) and proceed.




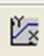
5 Checking the Size Standard

5.1 Located on the top toolbar in the main analysis window, **Click Size Calibration** 

5.2 In the Calibration Charts window, Click Chart Synchronize 

FORENSIC BIOLOGY PROTOCOLS FOR FORENSIC STR ANALYSIS

GeneMarker Manual		
Status: Published		Document ID: 6311
DATE EFFECTIVE 06/25/2018	APPROVED BY Nuclear DNA Technical Leader	PAGE 13 OF 36

- 5.3 Click **Sample Name** header to sort samples in order. In the **Sample List**, either **Click on a Sample** or **Navigate using the Up/Down Arrows**, check the size standard for each sample as per the amplification kit.
- 5.3.1 If the peak is recognized by the software, a green inverted triangle appears at the top of the peak.

- 5.3.2 If the size standard needs manual editing by adding or deleting a peak; **Right Click** on the desired peak → Select **Delete/Add Peak** → **Right Click Again** → Select **Update Calibration**
- 5.4 Close Calibration Charts window.
- 5.4.1 If any sample is automatically marked as disabled by the software, review the size standard in the Calibration Charts window to ensure this was due to failing or poor size standard. If it is confirmed that the sample has a failing or poor size standard, a rerun code must be applied to that sample. **Right click** on the sample in Sample File Tree within Main Analysis Window → Click **Edit Comments** → **Enter rerun code** in Comments field → Click **OK**
- 5.4.2 If any sample has failing or poor size standard, and was not automatically marked as disabled by the software, any peak labels present must be deleted. Open the Browse by All Color analysis window → navigate to the relevant sample(s) → highlight all peaks in one dye by holding down Ctrl, left click and dragging around any peaks present in that dye → click **Delete** to remove the peak labels → repeat for each dye. **Right click** on the sample in Sample File Tree within Main Analysis Window → Click **Edit Comments** → **Enter rerun code** in Comments field → Click **OK**
- 5.5 In the Main Analysis window, Click on the Down Arrow next to the Show Color  icon located in the top toolbar. → Click **Hide All**
- 5.6 In the Sample File Tree, **Right Click** on Allele Call → Click **Select Max**
- 5.7 In the Main Analysis window, Click on the Down Arrow next to the Show Color  icon located in the top toolbar. → Click **ORANGE**
- 5.8 Adjust axis to view size standard depending on amplification kit
- 5.8.1 On the top toolbar, Click Set Axis icon 
- 5.8.2 Click Fixed 'X' → enter X axis range

PowerPlex Fusion® = 55-510
Yfiler® = 75-410


Controlled versions of Department of Forensic Biology Manuals only exist in the Forensic Biology Qualtrax software. All printed versions are non-controlled copies.

© NYC OFFICE OF CHIEF MEDICAL EXAMINER

FORENSIC BIOLOGY PROTOCOLS FOR FORENSIC STR ANALYSIS

GeneMarker Manual		
Status: Published		Document ID: 6311
DATE EFFECTIVE 06/25/2018	APPROVED BY Nuclear DNA Technical Leader	PAGE 14 OF 36

5.8.3 Click Set Axis again → Select Auto Fit Y

5.8.4 **Note:** Analysts can zoom in/out by using the zoom icons  located at the top toolbar. As an additional option, hold down the left button on the mouse and drag the dotted box that appears from the upper left to the lower right (around the desired “zoom in” area). To zoom out, hold down the left button on the mouse again dragging the box from lower right to upper left. To scroll while zoomed in, right click and hold while dragging the mouse in the direction you want to scroll.

5.9 Review size fragments by ensuring that all required peaks are labeled within +/- 0.5bp of the fragment size.

5.9.1 If a peak is not labeled, then the size standard fails.

5.10 **Right click** on sample in Sample File Tree within Main Analysis Window → Click **Edit Comments** → **Enter rerun code** in Comments field → Click **OK**

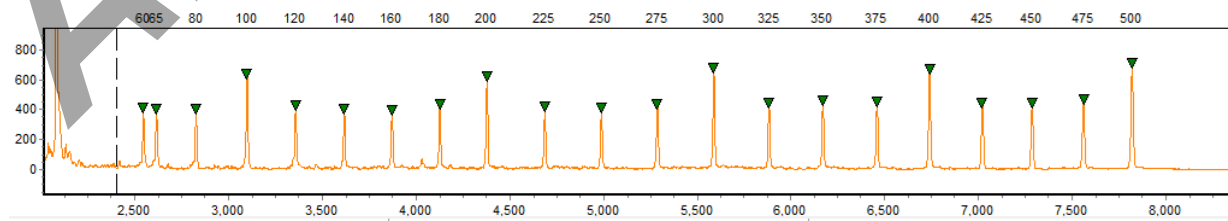
5.11 If any sample with failing or poor size standard has peaks called, the peak labels of those peaks will need to be deleted.

5.11.1 Open the Browse by All Color analysis window → navigate to the relevant sample(s) → highlight all peaks in one dye by holding down Ctrl, left click and dragging around any peaks present in that dye → click **Delete** to remove the peak labels → repeat for each dye

6 Size Standard

6.1 PowerPlex Fusion®

6.1.1 PowerPlex Fusion® samples are run with the WEN ILS500. ILS500 has a range of 60-500bp (Fragments: 60, 65, 80, 100, 120, 140, 160, 180, 200, 225, 250, 275, 300, 325, 350, 375, 400, 425, 450, 475, 500). All size fragments must be labeled in the calibration chart and the orange dye lane.



6.2 Yfiler®

6.2.1 Yfiler® samples are run with LIZ 500. The LIZ_Yfiler size template for LIZ 500 does not have the 250 bp sizing peak labeled as it is not utilized for data sizing. This peak should not be labeled within the Calibration Chart window. All other size calls in the range of 75-400 bp peaks must be properly match scored/sized

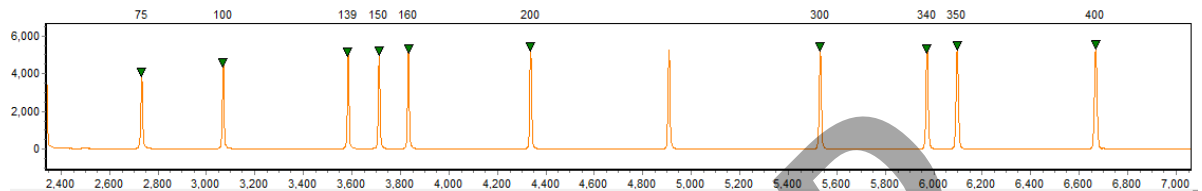
Controlled versions of Department of Forensic Biology Manuals only exist in the Forensic Biology Qualtrax software. All printed versions are non-controlled copies.

© NYC OFFICE OF CHIEF MEDICAL EXAMINER


FORENSIC BIOLOGY PROTOCOLS FOR FORENSIC STR ANALYSIS

GeneMarker Manual		
Status: Published		Document ID: 6311
DATE EFFECTIVE 06/25/2018	APPROVED BY Nuclear DNA Technical Leader	PAGE 15 OF 36


6.2.2 When viewing the size standard in the orange dye lane in the **Browse by All Color**, the 250bp will be labeled. This peak is not being used for sizing.



7 Analyzing Samples


7.1 Analysis of the data can be performed in the **Main Analysis** window and/or the **Browse by All Color**  window.



7.2 Adjust axis to view samples depending on amplification kit



7.2.1 On the top toolbar, Click Set Axis icon 

7.2.2 Click Fixed 'X' → enter X axis range

- PowerPlex Fusion® = 60-510
- Yfiler® = 90-340

7.2.3 Click Set Axis again → Select Auto Fit Y 

7.2.4 **Note:** Analysts can zoom in/out by using the zoom icons   located at the top toolbar. As an additional option, hold down the left button on the mouse and drag the dotted box that appears from the upper left to the lower right (around the desired “zoom in” area). To zoom out, hold down the left button on the mouse again dragging box from lower right to upper left. To scroll while zoomed in, right click and hold while dragging the mouse in the direction you want to scroll. If using the Browse by All Color window, adjust Max Chart Number to 2

7.3 Analyst may choose to use the Peak Table  during analysis. Click the  icon to turn the chart/table on and off.

FORENSIC BIOLOGY PROTOCOLS FOR FORENSIC STR ANALYSIS

GeneMarker Manual		
Status: Published		Document ID: 6311
DATE EFFECTIVE 06/25/2018	APPROVED BY Nuclear DNA Technical Leader	PAGE 16 OF 36

8 Editing a peak

- 8.1 Click on Peak to Highlight → Right Click → Click Edit Comments → Select Edit From List or Type New Edit (refer to [edit code list](#)) → Click OK.
 - 8.1.1 To select multiple peaks for editing, Hold the Ctrl key + left mouse click → Drag the mouse to highlight intermittent peaks
- 8.2 Once the correct Edit is selected, highlight the peak and press Delete key to remove the label from the peak.
- 8.3 To check peak history → Right click on peak → Click view history
- 8.4 Any changes made to the peak will be listed in order from most recent down. Click on any line to view specific change details in the Current/Old Values: window. Scroll all the way to the right to view edit code applied to peak in Allele Comments column.
- 8.5 **Note:** If a label has been removed from a peak and needs to be restored, **Click on Peak to Highlight** → **Right Click** → **Undelete**. If an edit needs to be removed from a peak → right click on peak → click edit comments → remove text from Comments: box so the text field is blank → Click OK (the E will still be visible but the edit comment will be removed)
- 8.6 **Note:** Peaks will only be considered stutter by the software if they are within 0.5bp from the parent peak. If a stutter peak is >0.5bp from the parent peak the software will not automatically filter this out as stutter, even if is under the stutter filter percentage for that location. +/- 4 stutter should not be manually edited from **evidence** samples in Fusion. Stutter < 30% of the parent peak can be edited from Fusion positive control samples and exemplar samples..

9 Scheduling Re-Runs

- 9.1 If a sample **Failed** (over saturation, bad size standard, no data, etc..) → Right click on **sample** in **Sample Tree** within Main Analysis Window → Click **Edit Comments** → Type Re-Run Code in the comment box → Click OK
- 9.2 All peak labels must be removed from **failed samples**.
 - 9.2.1 Open the Browse by All Color analysis window → navigate to the relevant sample(s) → highlight all peaks in one dye by holding down Ctrl, left click and dragging around any peaks present in that dye → click **Delete** to remove the peak labels → repeat for each dye
 - 9.2.2 If sample did not fail but re-run is desired → Right click on **sample** in **Sample Tree** within Main Analysis Window → Click **Edit Comments** → Type Re-Run Code in the comment box → Click OK

FORENSIC BIOLOGY PROTOCOLS FOR FORENSIC STR ANALYSIS

GeneMarker Manual		
Status: Published		Document ID: 6311
DATE EFFECTIVE 06/25/2018	APPROVED BY Nuclear DNA Technical Leader	PAGE 17 OF 36

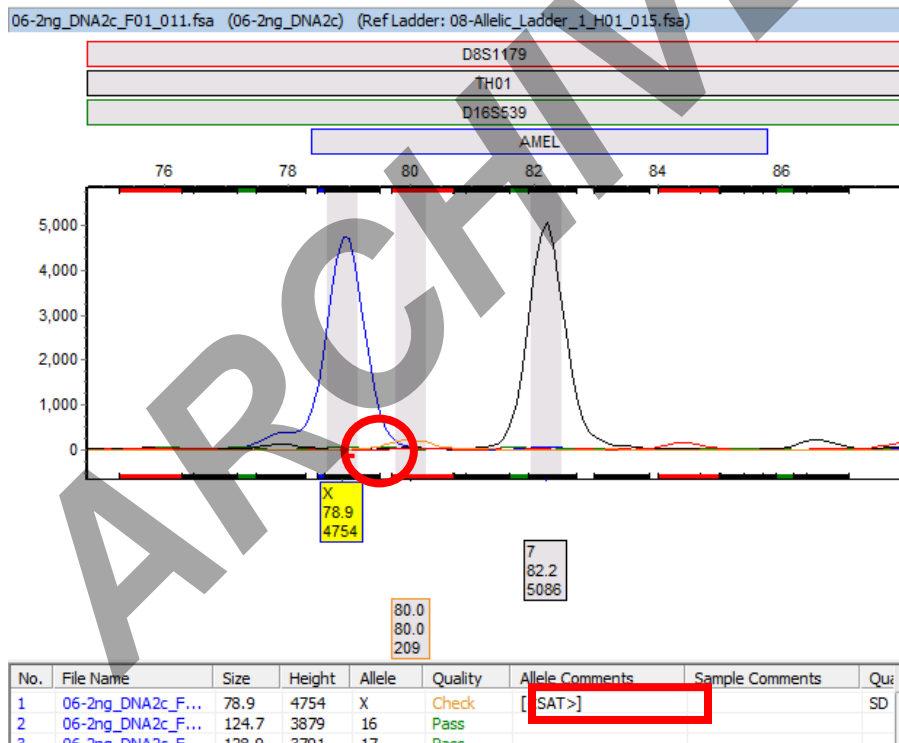
10 Over- Saturation

10.1 Check for saturation detection

10.1.1 In the Main Analysis Window electropherogram a pink line will indicate the possible saturation of peak. This indication will also be noted in the Peak Table as <SAT> for that allele in the Allele Comment field.

10.1.2 If the sample has excessively saturated peaks (>10,000 RFU or split peaks) this sample must be rerun at a dilution.

10.1.3 If a sample has labeled peaks above 7,000 RFU, and there are many instance of pull-up, pull-down, and/or elevated baseline, the sample may be rerun at a dilution.



10.2 Once the entire run has been reviewed, all edits have been made and labels have been removed from all edited peaks, on the top left corner of the screen, **Click File** → **Click Save Project**


10.3 You must save over the existing project every time you save.

11 Exporting for LIMS (all systems and sample types)

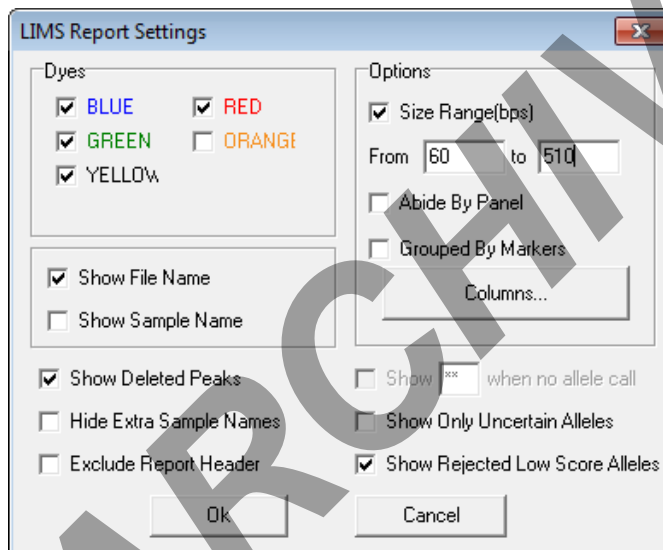
Controlled versions of Department of Forensic Biology Manuals only exist in the Forensic Biology Qualtrax software. All printed versions are non-controlled copies.

FORENSIC BIOLOGY PROTOCOLS FOR FORENSIC STR ANALYSIS

GeneMarker Manual		
Status: Published		Document ID: 6311
DATE EFFECTIVE 06/25/2018	APPROVED BY Nuclear DNA Technical Leader	PAGE 18 OF 36

- 11.1 In the Main Analysis Window → Click the down arrow next to the Show All Color icon → Click **Show All** to turn on all colors before exporting.
- 11.2 In the report display section of the main analysis screen, click on the down arrow next to the Save Report icon . Ensure the “Save LIMS report” is selected.
- 11.3 In the LIMS report settings window that pops up, ensure the settings are as follows:
- 11.3.1 The Size Range will be the same as the X- axis range for analysis:

- 90-340 for Yfiler
- 60-510 for Fusion/Fusion Exemplars



- 11.4 In **Options**, click on “**Columns...**”; use the Add/Remove buttons to ensure the Selected Columns are present and listed in the order that follows:



Note: This is crucial to proper LIMS importation.


FORENSIC BIOLOGY PROTOCOLS FOR FORENSIC STR ANALYSIS

GeneMarker Manual		
Status:Published		Document ID: 6311
DATE EFFECTIVE 06/25/2018	APPROVED BY Nuclear DNA Technical Leader	PAGE 19 OF 36

- 11.5 Click OK; Click OK again in the Allele Report Settings window. Save the file as type “Excel File (*.xlsx;*.xls)” under the appropriate run name (delete suffix “_AlleleReport”).
- 11.6 Navigate to the data entry screen for the corresponding test batch in LIMS. Click Import Instrument Data and import the excel file for the project.

12 Printing Initial Analysis Electropherograms (all system and sample types)

Note: If exporting a PDF of an electropherogram from a run that was analyzed in GeneMarker v 2.8.2, please refer to section 18.

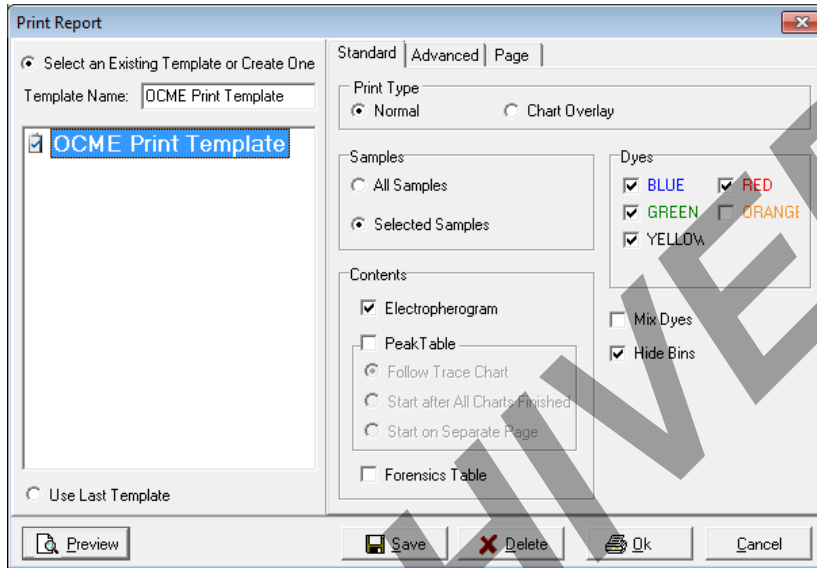
- 12.1 In the Sample File Tree → right click → select Max.
- 12.1.1 Do not select the failed samples that are scheduled for rerun due to “no or poor size standard”. The .pdf of electropherogram is not necessary since the sample status is indicated on the rerun table.
- 12.2 Click View → Preferences → Others tab
- 12.2.1 Check box for “Enable Sample Grouping” → Click OK
- 12.3 In Main Analysis Window click Project → Apply Sample Grouping (if grayed out return to step 12.1)
- 12.3.1 Click Group By Order on the bottom left
- 12.3.2 Change Group Size to 1
- 12.3.3 Click **Match** on the bottom right → Click OK
- 12.4 In the main analysis window → Click **Set Axis** → Click **Fixed X axis** The Size Range will be the same as the X- axis range for analysis:
- 60-510 for Fusion
 - 90-340 for Yfiler
- 12.5 Click Set Axis again → Select Auto Fit Y 
- 12.6 In Main Analysis window → Click Print Icon
- 12.6.1 Select OCME Print Template on left

FORENSIC BIOLOGY PROTOCOLS FOR FORENSIC STR ANALYSIS

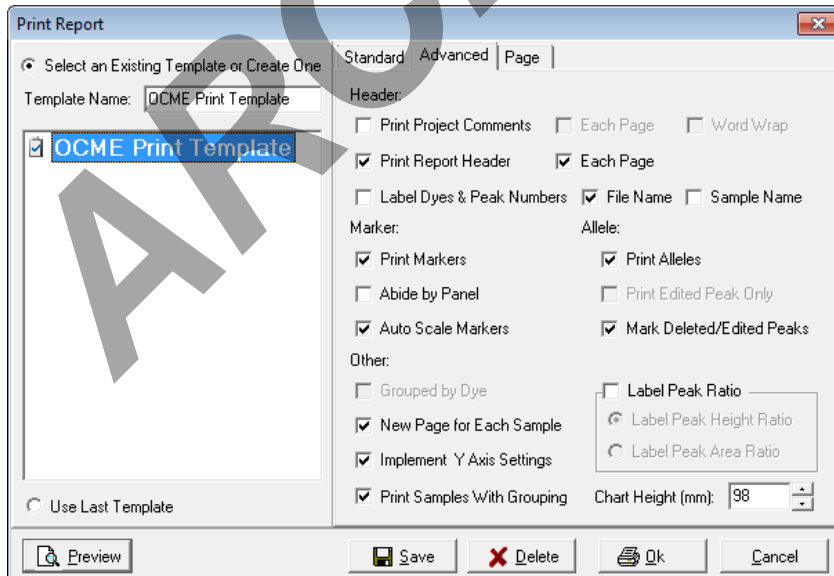
GeneMarker Manual		
Status: Published		Document ID: 6311
DATE EFFECTIVE 06/25/2018	APPROVED BY Nuclear DNA Technical Leader	PAGE 20 OF 36

12.6.2 Ensure the settings match below:

12.6.2.1 Standard Tab:



12.6.2.2 Advanced Tab:

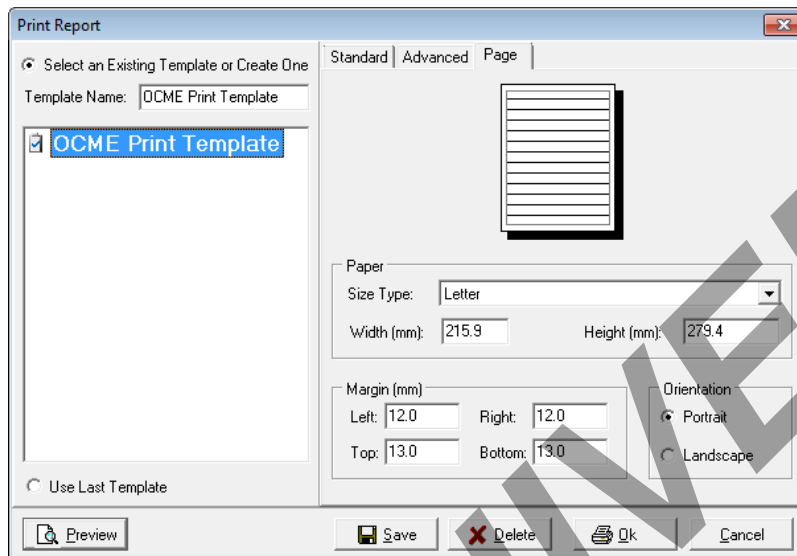


Controlled versions of Department of Forensic Biology Manuals only exist in the Forensic Biology Qualtrax software. All printed versions are non-controlled copies.

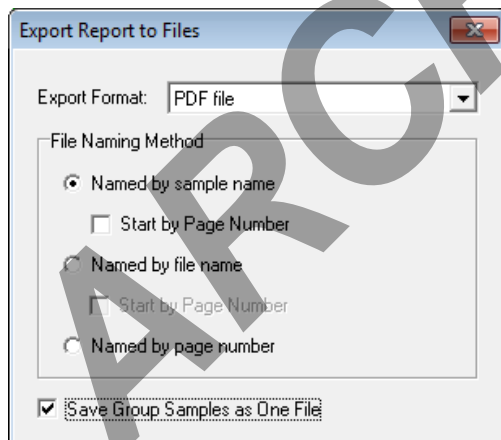
FORENSIC BIOLOGY PROTOCOLS FOR FORENSIC STR ANALYSIS

GeneMarker Manual		
Status: Published		Document ID: 6311
DATE EFFECTIVE 06/25/2018	APPROVED BY Nuclear DNA Technical Leader	PAGE 21 OF 36

12.6.2.3 Page Tab



12.6.3 Click Preview → Click Export to File icon Assure settings match below:



12.6.4 Click on the “...” icon to choose the appropriate export directory for the PDF files

12.6.5 Click OK → Export Report to PDFs Events window will appear. Once completed click OK

12.7 If analyzing **Evidence**: Wait to import PDFs into LIMS until after the completion of STRmix analysis.

12.8 If analyzing **Exemplars**: Import all PDFs into LIMS.



Controlled versions of Department of Forensic Biology Manuals only exist in the Forensic Biology Qualtrax software. All printed versions are non-controlled copies.

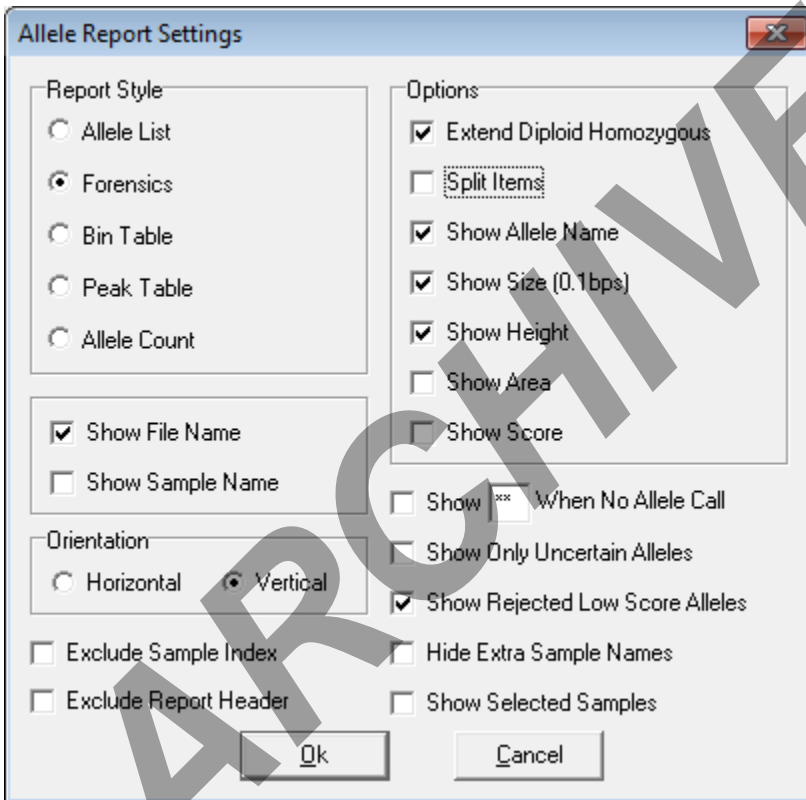
© NYC OFFICE OF CHIEF MEDICAL EXAMINER


FORENSIC BIOLOGY PROTOCOLS FOR FORENSIC STR ANALYSIS

GeneMarker Manual		
Status:Published		Document ID: 6311
DATE EFFECTIVE 06/25/2018	APPROVED BY Nuclear DNA Technical Leader	PAGE 22 OF 36

13 Fusion Exemplars Only - Exporting EXEMPLAR table for STRmix™ input (for evidence table instructions see Section 16)

- 13.1 In Main Analysis Window Click the  icon → Select **Show All**. In the report display section of the main analysis screen, click on the report settings icon . Make sure settings match below:



- 13.2 Click OK → In the report display section of the main analysis screen, click on the down arrow next to the Save Report icon . Ensure the “Save Report” is selected.
- 13.3 Navigate to appropriate folder and save file as an excel file (*.xlsx;*.xls)”named as “Run name_SM”
- 13.4 For proper STRmix™ import the GeneMarker® to STRmix™ macro needs to be run.
- 13.4.1 Open the exported project excel file from Step 13.3 above.

Controlled versions of Department of Forensic Biology Manuals only exist in the Forensic Biology Qualtrax software. All printed versions are non-controlled copies.

FORENSIC BIOLOGY PROTOCOLS FOR FORENSIC STR ANALYSIS

GeneMarker Manual		
Status: Published		Document ID: 6311
DATE EFFECTIVE 06/25/2018	APPROVED BY Nuclear DNA Technical Leader	PAGE 23 OF 36

13.4.2 Open GeneMarker® to STRmix™ macro.

13.4.3 Follow the instructions on the “instructions” tab.

13.5 After macro has run click “save as” within the GeneMarker® to STRmix™ macro file.

13.6 Change the file type to “.txt” (text, tab delimited)

13.7 Navigate to folder containing your project data and save file there.

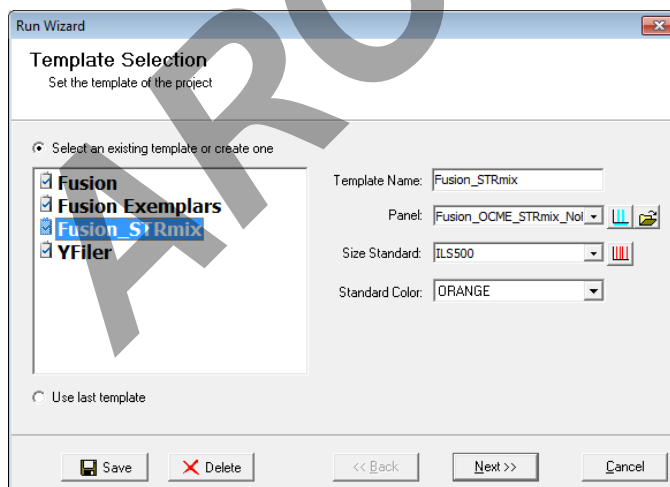
14 Fusion Evidence Only - STRmix™ Analysis (stutter filters off)

14.1 Begin by importing the data from the initial analysis into LIMS to generate the edit sheet. Have the edit sheet open in LIMS as you perform the second analysis with stutter filters off for STRmix™ to refer to and ensure the same edits are being made the second time.

14.1.1 If Project is still open → Click **Run Project**  located in the top toolbar.

14.1.2 If project is not open → Click File → Open Project → Navigate to run → select project → click open → Click **Run Project**  located in the top toolbar.

14.2 In Template Selection window, select the appropriate existing template.



14.3 Click Next

14.4 In the **Data Process** window, ensure the following settings are used based on amplification kit

FORENSIC BIOLOGY PROTOCOLS FOR FORENSIC STR ANALYSIS

GeneMarker Manual		
Status: Published		Document ID: 6311
DATE EFFECTIVE 06/25/2018	APPROVED BY Nuclear DNA Technical Leader	PAGE 24 OF 36

14.4.1 PowerPlex Fusion®_STRmix™

Run Wizard
Data Process - HID Analysis
Set data process options

Raw Data Analysis

Auto Range (frame)
Start: 0 End: 10000

Smooth Enhanced Smooth

Baseline Subtraction:
 Superior Classic Enhanced

Pull-up Correction Spike Removal

Saturation Detection Saturation Repair

Size Call
 Local Southern Cubic Spline

Allele Call

Auto Range (bps)
Start: 55 End: 510

Score Filter

Peak Detection Threshold: ?

Min Intensity: 50 Max Intensity: 32760

Percentage > 0 Global Max

Note: Use Panel Editor to set Min Intensity and % Global Max for peaks within Markers

Save Delete << Back Next >> Cancel

14.5 Click Next

14.6 In the Additional Settings window, ensure the following settings are used:

Run Wizard
Additional Settings - HID Analysis
Set additional options related to the different analysis type

Allelic Ladder: NONE

Positive Control Template: PP_Fusion

Allele Evaluation
Peak Score
Reject < 0.00 Check 1.00 < Pass

Mixture Evaluation

Valid Mixture Peak Percentage: 0 %

Min Mixture Marker Number: 3

Auto Select Best Ladder
 Auto Panel Adjustment

Save Delete << Back Ok Cancel

14.6.1 **Note:** Do NOT click Save within the Data Process Window. This will overwrite the template for all analysts.

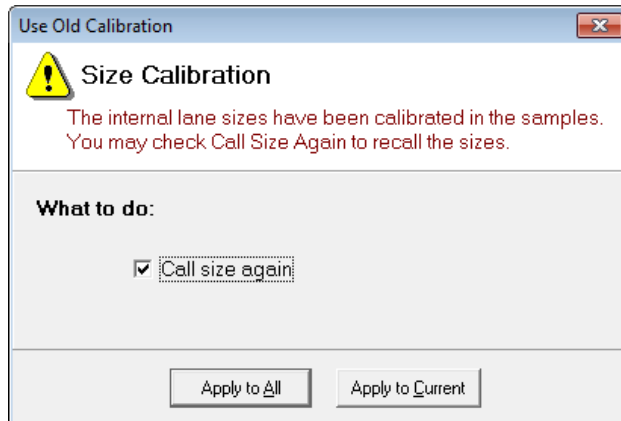
Controlled versions of Department of Forensic Biology Manuals only exist in the Forensic Biology Qualtrax software. All printed versions are non-controlled copies.

© NYC OFFICE OF CHIEF MEDICAL EXAMINER

FORENSIC BIOLOGY PROTOCOLS FOR FORENSIC STR ANALYSIS

GeneMarker Manual		
Status: Published		Document ID: 6311
DATE EFFECTIVE 06/25/2018	APPROVED BY Nuclear DNA Technical Leader	PAGE 25 OF 36

14.7 Click OK → A window will pop up:



14.8 Check “Call size again” and Click Apply to All → Allow data to process → Click OK

14.9 On the top left corner of the screen, Click File → Click Save Project → Save Project with suffix _SM

14.10 Perform a second analysis of this run

14.10.1 Do not recheck or edit Ladder, Size Standard or Controls. Passing controls and size standard are determined by the initial analysis. **Leave all controls and failed samples ENABLED**

14.10.2 Remove the labels from the same peaks that were edited in the initial analysis. It is not necessary to enter edit codes again.

14.10.3 If a sample had a rerun code during the initial analysis it is NOT necessary to enter the rerun code again.

14.11 Once the entire run has been reviewed, and labels have been removed from all artifact peaks, **Click File → Click Save Project**

15 Fusion Evidence Only - Printing Electropherograms after STRmix™ Analysis (evidence samples only)

Note: If printing or exporting a PDF of an electropherogram from a run that was analyzed in GeneMarker v 2.8.2, please refer to section [18](#).

FORENSIC BIOLOGY PROTOCOLS FOR FORENSIC STR ANALYSIS

GeneMarker Manual		
Status: Published		Document ID: 6311
DATE EFFECTIVE 06/25/2018	APPROVED BY Nuclear DNA Technical Leader	PAGE 26 OF 36

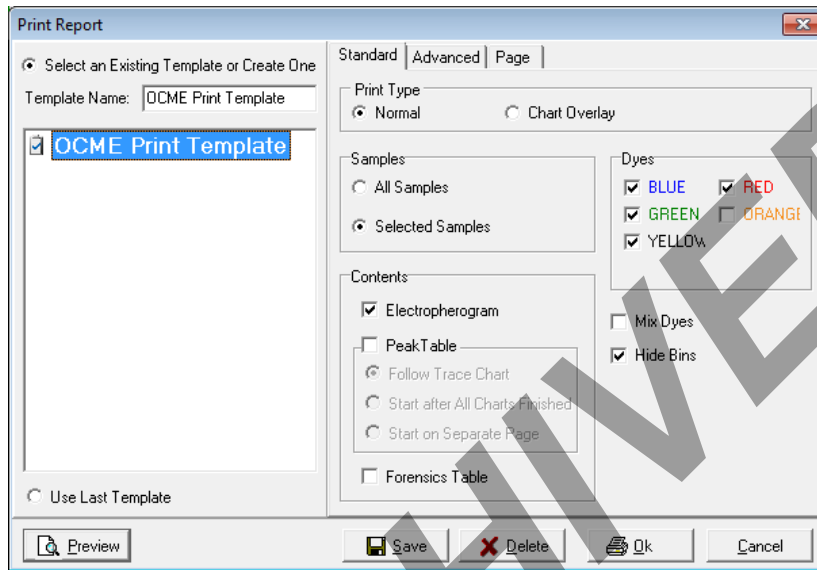
- 15.1 In Sample File Tree → right click → Select Max
- 15.2 Double click on sample to **DESELECT**:
 - All Controls (Ladder, PC, NC, Eneg, Mneg)
 - Any failed sample
- 15.3 Click View → Preferences → Others tab
- 15.4 Check box for “Enable Sample Grouping” → Click OK
- 15.5 In Main Analysis Window click Project → Apply Sample Grouping (if grayed out return to step 9.2)
- 15.6 Click Group By Order on the bottom left
- 15.7 Change Group Size to 1
- 15.8 Click Match on the bottom right → Click OK
- 15.9 In the main analysis window → **Click Set Axis** → **Click Fixed X axis** The Size Range will be the same as the X- axis range for analysis:
 - 60-510 for Fusion
 - 90-340 for Yfiler
- 15.10 Click Set Axis again → Select Auto Fit Y
- 15.11 In Main Analysis window → Click Print Icon
- 15.12 Select OCME Print Template on left

FORENSIC BIOLOGY PROTOCOLS FOR FORENSIC STR ANALYSIS

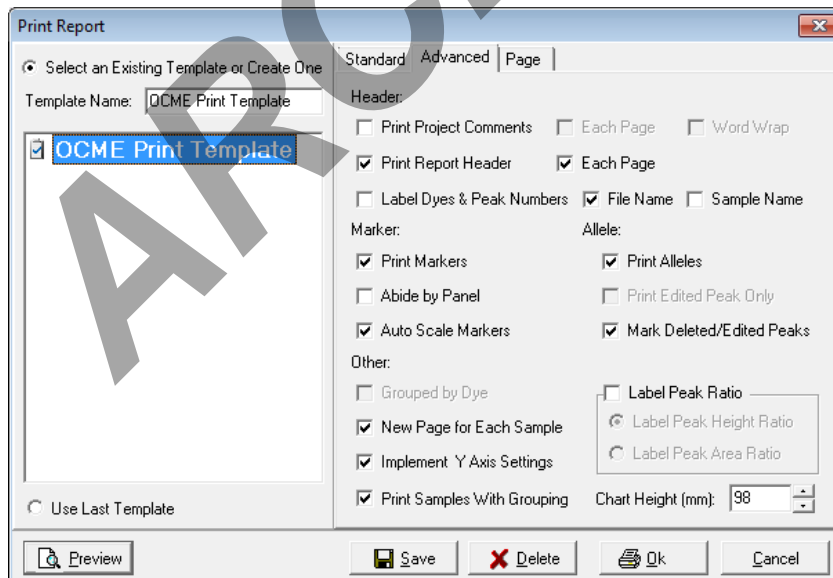
GeneMarker Manual		
Status: Published		Document ID: 6311
DATE EFFECTIVE 06/25/2018	APPROVED BY Nuclear DNA Technical Leader	PAGE 27 OF 36

15.13 Ensure the settings match below:

15.13.1 Standard Tab:



15.13.2 Advanced Tab:



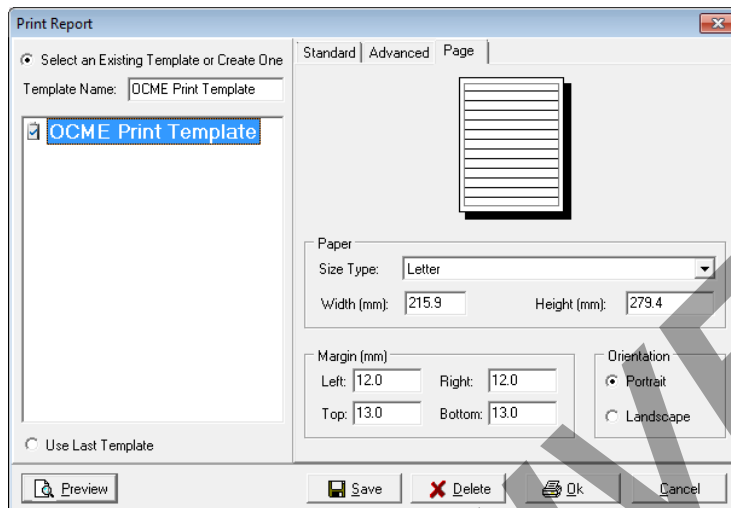
Controlled versions of Department of Forensic Biology Manuals only exist in the Forensic Biology Qualtrax software. All printed versions are non-controlled copies.

© NYC OFFICE OF CHIEF MEDICAL EXAMINER

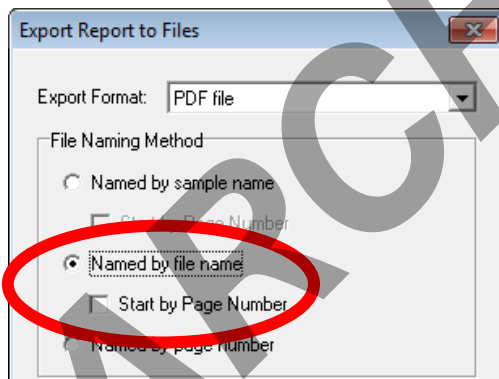
FORENSIC BIOLOGY PROTOCOLS FOR FORENSIC STR ANALYSIS

GeneMarker Manual		
Status: Published		Document ID: 6311
DATE EFFECTIVE 06/25/2018	APPROVED BY Nuclear DNA Technical Leader	PAGE 28 OF 36

15.13.3 Page Tab



15.14 Click Preview → Click Export to File icon  Assure settings match below:



Change to “Named by file name” for STRmix analysis

15.14.1 Make sure the “Save Group samples as one file” box is checked.

15.15 Click on the “...” icon to choose the appropriate export directory for the PDF files


15.16 Click OK → Export Report to PDFs Events window will appear. Once completed click OK

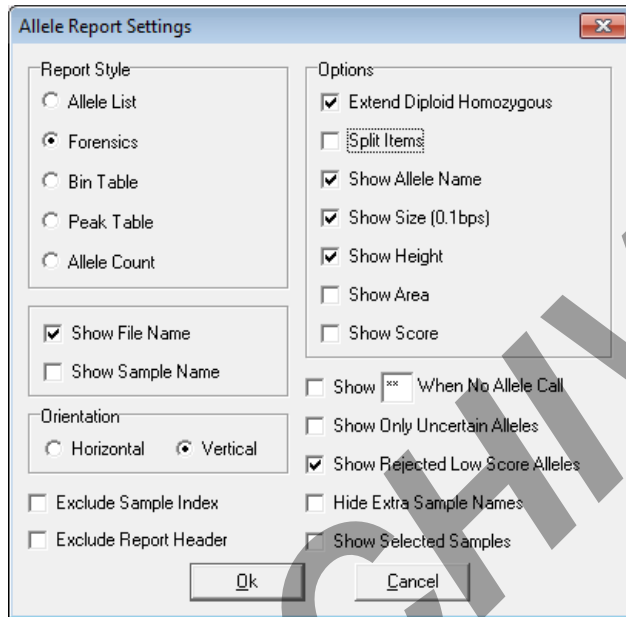
15.17 Import all PDFs (initial Fusion analysis and STRmix analysis) at the same time into LIMS.


FORENSIC BIOLOGY PROTOCOLS FOR FORENSIC STR ANALYSIS

GeneMarker Manual		
Status: Published		Document ID: 6311
DATE EFFECTIVE 06/25/2018	APPROVED BY Nuclear DNA Technical Leader	PAGE 29 OF 36

16 Fusion Evidence Only - Exporting EVIDENCE table for STRmix™ input

- 16.1 In the report display section of the main analysis screen, click on the report settings icon . Make sure settings match below:



- 16.2 Click **OK**
- 16.3 In the report display section of the main analysis screen, click on the **arrow** of the Save Report icon . Click “Save Report”
- 16.4 Navigate to appropriate folder and save file as “Excel File (*.xlsx;*.xls)” named as “Run name_SM”
- 16.5 For proper STRmix™ import the GeneMarker® to STRmix™ macro needs to be run.
- 16.5.1 Open the exported project excel file from Step **16.4** above.
- 16.5.2 Open GeneMarker® to STRmix™ macro.
- 16.5.3 Follow the instructions on the “instructions” tab.
- 16.5.4 After macro has run click “**save as**” within the GeneMarker® to STRmix™ macro file.
- 16.5.5 Change the file type to “**.txt**” (Text, tab delimited)

Controlled versions of Department of Forensic Biology Manuals only exist in the Forensic Biology Qualtrax software. All printed versions are non-controlled copies.

FORENSIC BIOLOGY PROTOCOLS FOR FORENSIC STR ANALYSIS

GeneMarker Manual		
Status: Published		Document ID: 6311
DATE EFFECTIVE 06/25/2018	APPROVED BY Nuclear DNA Technical Leader	PAGE 30 OF 36

16.5.6 Navigate to folder containing your project data and save file there.

17 Reporting Analyst/Case Tech Reviewer Sample Review

17.1 Verify all STR runs associated with case file samples checking for:

17.1.1 Passing Allelic Ladder was used to analyze run

17.1.2 Passing controls were present

17.1.3 Passing Size Standard for relevant case file samples

17.1.4 Appropriate edits were made for relevant case file samples and labels were removed from edited peaks

17.1.5 Any relevant samples needing re-run were scheduled and/or disabled

17.2 Determine if sample is suitable for comparison/STRmix™ analysis

17.3 If a true OL/OB was detected in a sample the allele must be assigned a call for STRmix™

17.4 Open STRmix™ .txt input file and replace OL/OB call with true call.

18 Re-printing/exporting a PDF for a sample from a run that was analyzed in GeneMarker v 2.8.2

18.1 In the main analysis window,


18.1.1 **Click Set Axis → Click Fixed X axis** The Size Range will be the same as the X- axis range for analysis:

18.1.1.1 60-510 for Fusion

18.1.1.2 90-340 for Yfiler

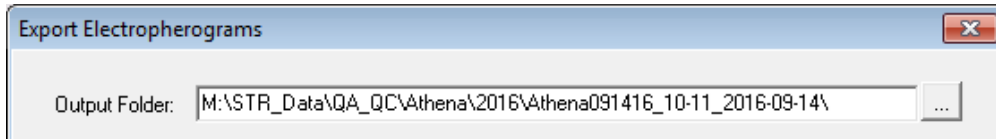
18.1.2 Select Auto Fit Y

18.2 Click Tools → Export Electropherogram

18.3 Set Output Folder to desired location for project PDFs by clicking  icon

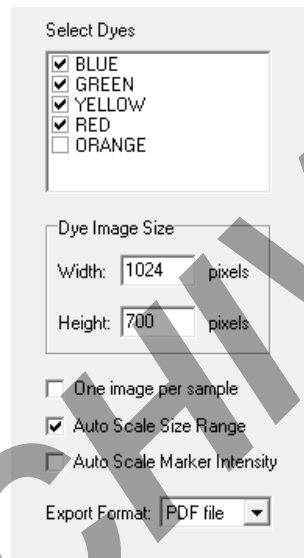
FORENSIC BIOLOGY PROTOCOLS FOR FORENSIC STR ANALYSIS

GeneMarker Manual		
Status: Published		Document ID: 6311
DATE EFFECTIVE 06/25/2018	APPROVED BY Nuclear DNA Technical Leader	PAGE 31 OF 36



18.4 Ensure settings match below:

18.4.1 Make sure to select PDF as export format



- 18.4.2 For exemplar or non-SM analysis: In the suffix field enter the run name with a “_” before it. (Ex: _Newton061316 88-89U A)
- 18.4.3 For SM analysis: In the suffix field enter the run name with a “_” before it followed by **_SM** (Ex: _Newton061316 88-89U A_SM) to indicate STRmix™ analysis.
- 18.5 Printing the **ladder**: Right click in the sample list → click Deselect All → Check the box for the ladder → In prefix field enter **ladders_** → click **Export**
- 18.6 Printing the **controls**: Uncheck the box for the ladder and check the box for all controls in the run → In the prefix field enter **controls_** → click **Export**
- 18.7 Printing the **samples**: Right click in the sample list → click Select All → Uncheck the box for all ladders and controls in the run, leaving **all** samples selected → clear the prefix field → click **Export**. This will create 4 PDFs for every sample, one for each dye.
- 18.8 Import all PDFs (initial Fusion analysis and STRmix analysis, as applicable) at the same time into LIMS.







Controlled versions of Department of Forensic Biology Manuals only exist in the Forensic Biology Qualtrax software. All printed versions are non-controlled copies.

FORENSIC BIOLOGY PROTOCOLS FOR FORENSIC STR ANALYSIS

GeneMarker Manual		
Status:Published		Document ID: 6311
DATE EFFECTIVE 06/25/2018	APPROVED BY Nuclear DNA Technical Leader	PAGE 32 OF 36

19 HELPFUL ICONS INDEX








19.1 Main Toolbar Icons

Icon	Name	Function
	Run Project	Opens Run Wizard for processing the data.
	Show/Hide Toggles	Allows user to show/hide the frames for the <i>Sample File Tree</i>, <i>Synthetic Gel Image</i> and <i>Report Table</i>, respectively.
	Show Color	Allows user the choice of viewing/hiding all color lanes or single dye lane layer (with single left mouse click on the icon, obtain single dye view)
	Zoom/Zoom Out	Allows for more discriminate view of electropherogram. Alternately, hold down left mouse button and draw a box; dragging from top left corner to bottom right zooms in on image while dragging from bottom right corner to top left zooms out.
	Set Axis	Default sets Y-axis by maximum peak intensity for the sample displayed. The other 2 options either auto-fit the Y-axis by the peak intensity of the alleles displayed, or allow for setting the X- and Y- axes ranges manually.
	Browse by All Colors	Allows for comparative view display of sample electropherograms by dye color. Individual samples can be selected from the drop down menu in the upper right corner of the All Color Browser display window.

FORENSIC BIOLOGY PROTOCOLS FOR FORENSIC STR ANALYSIS

GeneMarker Manual		
Status:Published		Document ID: 6311
DATE EFFECTIVE 06/25/2018	APPROVED BY Nuclear DNA Technical Leader	PAGE 33 OF 36

19.2 **Allele Call Icons** available after raw data processing only; Sample File Tree Allele Call folder must be selected






Icon	Name	Function
	Size Calibration	Displays calibration charts for linearity of lane analysis.
	Show Chart/Table	Allows user to toggle the display to show only the <i>Peak Table</i>, the <i>Peak Table</i> and the <i>Electropherogram</i>, or just the <i>Electropherogram</i>.
	Save Peak Table	Allows user to export the <i>Peak Table</i> as an Excel(.xls) file or a tab-delimited Text (.txt) file.
	Call Allele	Allows user to call alleles by sample(s), by marker or by dyes. Allows user to make some modifications to the threshold/filter settings without having to activate Run Wizard again (i.e. Peak Detection Threshold, Stutter Peak Filter and Peak Score Threshold).
	Marker Drop-down Menu	Allows user to select a marker to view. Available after the samples have been compared to a Panel.
	Event Log	Displays the processing success/failure of each dye lane.
	Magic Wizard	Activates the <i>Start Your Project</i>, <i>Run</i> and/or <i>Report</i> dialog boxes.

Controlled versions of Department of Forensic Biology Manuals only exist in the Forensic Biology Qualtrax software. All printed versions are non-controlled copies.

FORENSIC BIOLOGY PROTOCOLS FOR FORENSIC STR ANALYSIS

GeneMarker Manual		
Status:Published	Document ID: 6311	
DATE EFFECTIVE 06/25/2018	APPROVED BY Nuclear DNA Technical Leader	PAGE 34 OF 36




19.3 Browse By All Colors Icons

Icon	Name	Function
	Zoom In/ Zoom Out	Same use as in the <i>Main Analysis</i> Screen.
	Show/Hide Mouse Cross Lines	Allows user the option to show/hide X- and Y- axis grid lines that appear at the tip of the mouse cursor along with the basepair size and RFU value of the mouse cursor position.
	Show/Hide Bin Ranges	Allows user the option to show/hide the Bin brackets at the top and bottom of the electropherogram.
	Auto Scale Markers	Allows user the option to adjust the RFU intensities of low peaks to match the intensity of the highest peak in the dye color. When low peaks are increased, the intensity magnification factor is noted in the marker (can adjust from 2X to 8X).
	Print	Opens the <i>Print Report</i> settings box. Also accessible in the Main Analysis screen.

FORENSIC BIOLOGY PROTOCOLS FOR FORENSIC STR ANALYSIS

GeneMarker Manual		
Status:Published		Document ID: 6311
DATE EFFECTIVE 06/25/2018	APPROVED BY Nuclear DNA Technical Leader	PAGE 35 OF 36

19.4 **Report Table Icons** located directly above the *Report Table*.

Icon	Name	Description
	Report Settings	Allows user to customize <i>Report Table</i> display settings.
	Save Report	Allows user to export the <i>Report Table</i> as an Excel (.xls) file or tab-delimited Text (.txt) file.
	Customize Bin Column	Allows user to select which bins to include/exclude in the <i>Report Table</i> (check with TSL as this is not accessible at this time)

ARCHIVED

FORENSIC BIOLOGY PROTOCOLS FOR FORENSIC STR ANALYSIS

GeneMarker Manual		
Status: Published		Document ID: 6311
DATE EFFECTIVE 06/25/2018	APPROVED BY Nuclear DNA Technical Leader	PAGE 36 OF 36

20 PEAK TABLE OPTIONS INDEX

Dye	dye lane location of peak
Size	peak basepair size (x-axis)
Height	value given as relative frequency units (RFU) of the peak (y-axis)
Height Ratio	peak height divided by height of highest peak in the dye lane or Marker
Area	indicates the area under the curve of the peak; calculated based on x-axis Start/End column settings
Area Ratio	peak area divided by area of highest peak in the dye lane or Marker
Marker	locus location of the peak
Allele	bin location of the peak (based on kit/system panel and ladder analysis of project)
Difference	absolute value of distance between the peak center and <i>Bin</i> center in basepairs
Quality	assigns Pass/Check/Undetermined quality ranking for each peak relative to the Allele Evaluation <i>Peak Score</i> settings in the Run Wizard (see Additional Settings)
Score	an exponential curve based evaluation of the peak; calculation of the value is based on signal-to-noise ratio and peak shape (or morphology)
Start/End	beginning and finish basepairs of the peak's Area calculation
Allele Comments	software and user edited comments for the peak; right mouse click peak in chart to add peak edit comments or select from the drop down list (more in Edit Comments Index)
Sample Comments	user added comments for the sample; right mouse click sample name in the sample tree to add new sample edit comments or select from the drop down list (more in Sample Comments Index)
Quality Reasons	letter code abbreviation(s) of reason(s) for a peak's <i>Quality</i> assignment if ranked Check/Undetermined