

Appendix D: Historic Resources Photo Figures



St. Mark's Historic District (A). View west on East 10th Street 1



St. Mark's Historic District (A).
View southwest on East 10th Street 2

**Known Historic Resources
East Village Rezoning Area**

Figure D-1



Louis N. Jaffee Art Theater (1) 3



Elizabeth Home for Girls (2) 4

Known Historic Resources East Village Rezoning Area

Figure D-2



Greek Revival Row House at 311 East 12th Street
(3)

5



St. Mark's-in-the-Bowery Church (4)

6

**Known Historic Resources
East Village Rezoning Area**

Figure D-3



Nicholas and Elizabeth Stuyvesant Fish House 7



NYPL Ottendorfer Branch (6) and Deutsches Dispensary (7) 8

Known Historic Resources East Village Rezoning Area

Figure D-4



Hamilton-Holly House (8) 9



German-American Shooting Society Clubhouse (9) 10



Daniel Leroy House (10) 11



McSorley's Old Ale House (11) 12



Saul Birns Building (12) 13



Middle Collegiate Church (13) 14



Isaac T. Hopper House (14) 15



Italianate House at 68 East 7th Street (15) 16



German Evangelical Lutheran Church of St. Mark (16) 17



Loft buildings at 59-61 East 4th Street (17) 18

**Known Historic Resources
East Village Rezoning Area**

Figure D-9



Commercial building at 62 East 4th Street (18) 19



Turn Hall (19) 20



LaMama Experimental Theater Club (20) 21



Industrial National Bank Building (21) 22

Known Historic Resources East Village Rezoning Area Figure D-11



Public School 751 (22) 23



Greek Revival row houses at 30-38 East 3rd Street (23-27) 24



Greek Revival row house at 28 East 2nd Street (28) 25



Third District Magistrates Court (30) 26

Known Historic Resources East Village Rezoning Area

Figure D-13



New York City Marble Cemetery (31) 27



Public School 79 (32) 28

**Known Historic Resources
East Village Rezoning Area**

Figure D-14



First Houses at 112-138 East 3rd Street (33) 29



First Houses at 29-41 Avenue A (33) 30



Congregation Beth Yitzack (34) 31



11th Street Public Bath (35) 32

**Known Historic Resources
East Village Rezoning Area**

Figure D-16



NYPL Tompkins Square Branch (36) 33



Charlie Parker Residence (37) 34



Christodora House (38) 35



Public School 64 (39). 36
East 9th Street facade

**Known Historic Resources
East Village Rezoning Area**

Figure D-18



Public School 64 (39).
East 10th Street facade **37**



Tompkins Square Lodging House for Boys (40) **38**



St. Brigid's Roman Catholic Church (41) 39



Wheatsworth Factory (42) 40



Public National Bank of New York (43) 41



Congregation Beth Hamedrash Hagadol Anshe Ungam (44) 42

**Known Historic Resources
East Village Rezoning Area**

Figure D-21



Sixth Street Industrial School (45) 43



Church of the Most Holy Redeemer (46) 44



Church of the Most Holy Redeemer Rectory (46) 45



Church of the Most Holy Redeemer School (46) 46



Orthodox Home (47) 47



New York Eye and Ear Infirmary (52) 48



Fire Engine Company No. 5 (53) 49

**Known Historic Resources
East Village 400-Foot Study Area**



Grace Chapel (Episcopal) and Hospital (54) 50



Metropolitan Savings Bank (59) 51

**Known Historic Resources
East Village 400-Foot Study Area**

Figure D-26



Public School 91 (56) 52



University Settlement House (67) 53



Seventh-Day Adventist Church of Union Square (68) 54



Tenement at 110 Forsyth Street (69) 55

**Known Historic Resources
Lower East Side Rezoning Area**



Tenements at 104 Forsyth Street (70)
and 100-102 Forsyth Street (71) 56



Kehila Kadosha Janina Synagogue (72) 57



Anshe Chesed Synagogue (75) 58



Public School 160 (76) 59

**Known Historic Resources
Lower East Side Rezoning Area
Figure D-30**



Stanton Street Shul (77) 60



Former Treemark Shoes Store (80) 61



Tenements at 82 and 80 Forsyth Street (82, 83) 62

**Known Historic Resources
Lower East Side 400-Foot Study Area**



Essex Street Market (84) at 120-128 Essex Street 63



Essex Street Market (84) at 130-144 Essex Street 64

**Known Historic Resources
Lower East Side 400-Foot Study Area**



Hamilton Fish Park Play Center (85) 65



Williamsburg Bridge (86). 66
Entry plaza at Delancey and Clinton Streets

**Known Historic Resources
Lower East Side 400-Foot Study Area**



293-345 East 10th Street. View east from Avenue A 67



293-345 East 10th Street. View east from midblock 68

**Potential Historic Resources - East Village Rezoning Area
Potential Tompkins Square Park Historic District (F)**



293-345 East 10th Street. View west from Avenue B 69



293-345 East 10th Street. View west from midblock 70

**Potential Historic Resources - East Village Rezoning Area
Potential Tompkins Square Park Historic District (F)**



163-173 Avenue B. View north from East 10th Street 71



173 Avenue B. View southeast from East 11th Street 72

Potential Historic Resources - East Village Rezoning Area Potential Tompkins Square Park Historic District (F)



143-157 Avenue B. 73
View south from East 10th Street



348 East 10th Street and Public School 64. 74
View east from Avenue B

**Potential Historic Resources - East Village Rezoning Area
Potential Tompkins Square Park Historic District (F)**
Figure D-38



127-139 Avenue B.
View north on Avenue B adjacent to Topkins Square
Lodging House (40) 75



602-626 East 9th Street. View east from Avenue B 76

Potential Historic Resources - East Village Rezoning Area Potential Tompkins Square Park Historic District (F)



602-626 East 9th Street.
View west toward Avenue B 77



299 East 8th Street.
View east 78

Potential Historic Resources - East Village Rezoning Area
Potential Tompkins Square Park Historic District (F)
Figure D-40



St. Brigid's Roman Catholic Church (41). 79
View north on Avenue B from East Seventh Street

Potential Historic Resources - East Village Rezoning Area
Potential Tompkins Square Park Historic District (F)



313-347 East 6th Street. 80
View east adjacent to 313 East 6th Street



313-347 East 6th Street. 81
View east from midblock

Potential Historic Resources - East Village Rezoning Area
Potential East 6th Street Historic District (G)



313-347 East 6th Street. 82
View west adjacent to 343 East 6th Street



310-340 East 6th Street. 83
View east adjacent to 306 East Sixth Street

Potential Historic Resources - East Village Rezoning Area
Potential East 6th Street Historic District (G)



310-340 East 6th Street. View east from midblock 84



310-340 East 6th Street. 85
View west adjacent to 334 East 6th Street

Potential Historic Resources - East Village Rezoning Area Potential East 6th Street Historic District (G)



Emma Goldman apartment (87) at 208-210 East 13th Street 86



Row house at 210 East 9th Street (88) 87



Hebrew Actor's Union (89) 88



Greek Revival row house at 37 East 7th Street (90) 89



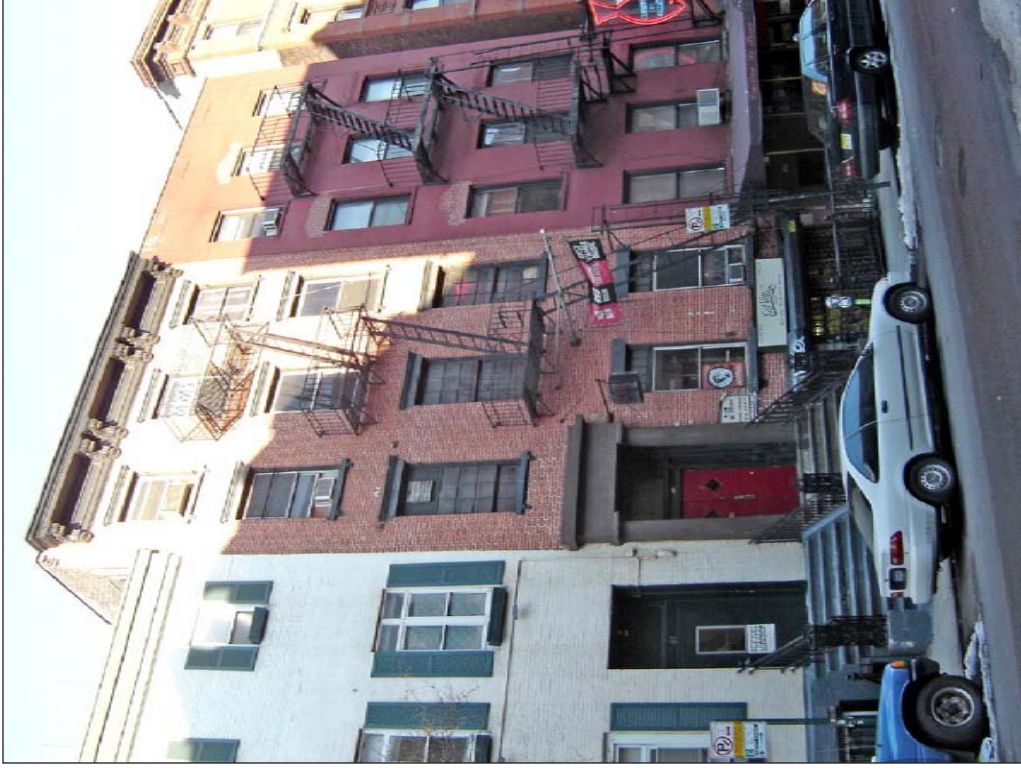
Orpheum Theater (91) 90



Middle Collegiate Church House (92) 91



Tenements at 213-215 East 5th Street (93) 92



Row house at 85 East 4th Street (94) 93



Tenement at 58 East 4th Street (95) 94



Tenement at 13 East 3rd Street (95) 95



Row house at 45 East 3rd Street (97) 96



Tenements at 47-49 East 3rd Street (98) 97



Catholic Worker Maryhouse (99) 98



Cathedral of the Holy Virgin Protection (100)
and 65 East 2nd Street (101) 99



Tenement at 87 East 2nd Street (102) 100



Catholic Worker St. Joseph House (103) 101

Potential Historic Resources
East Village Rezoning Area



Veniero's building (104) 102



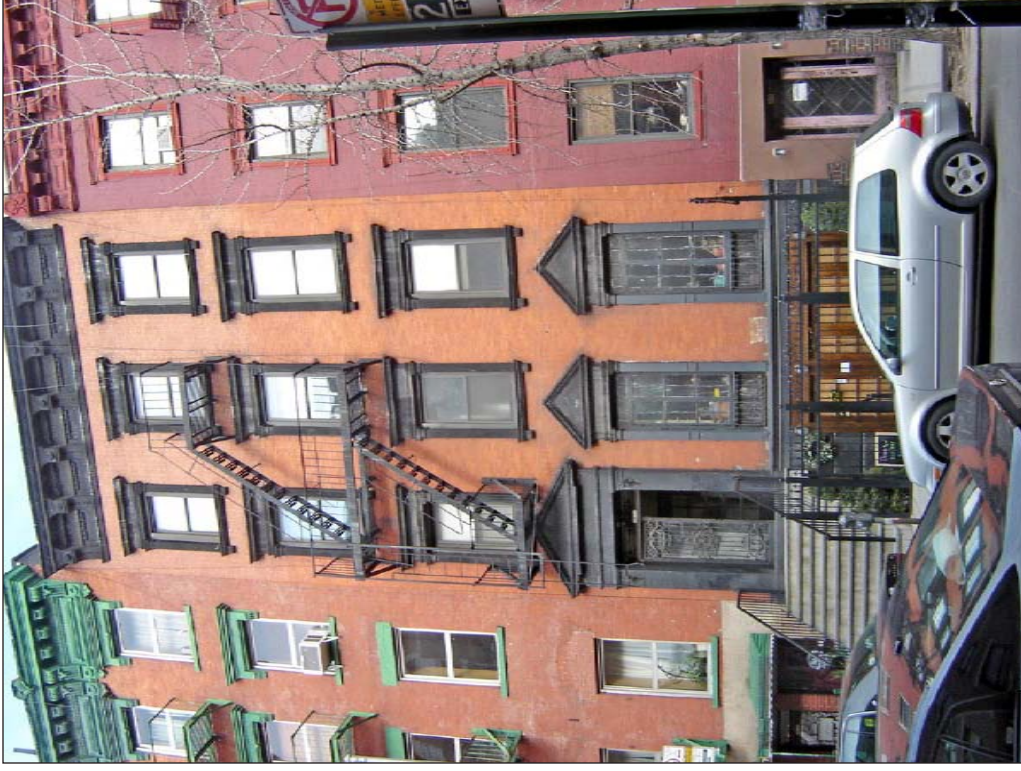
164-180 First Avenue (105) 103

Potential Historic Resources East Village Rezoning Area

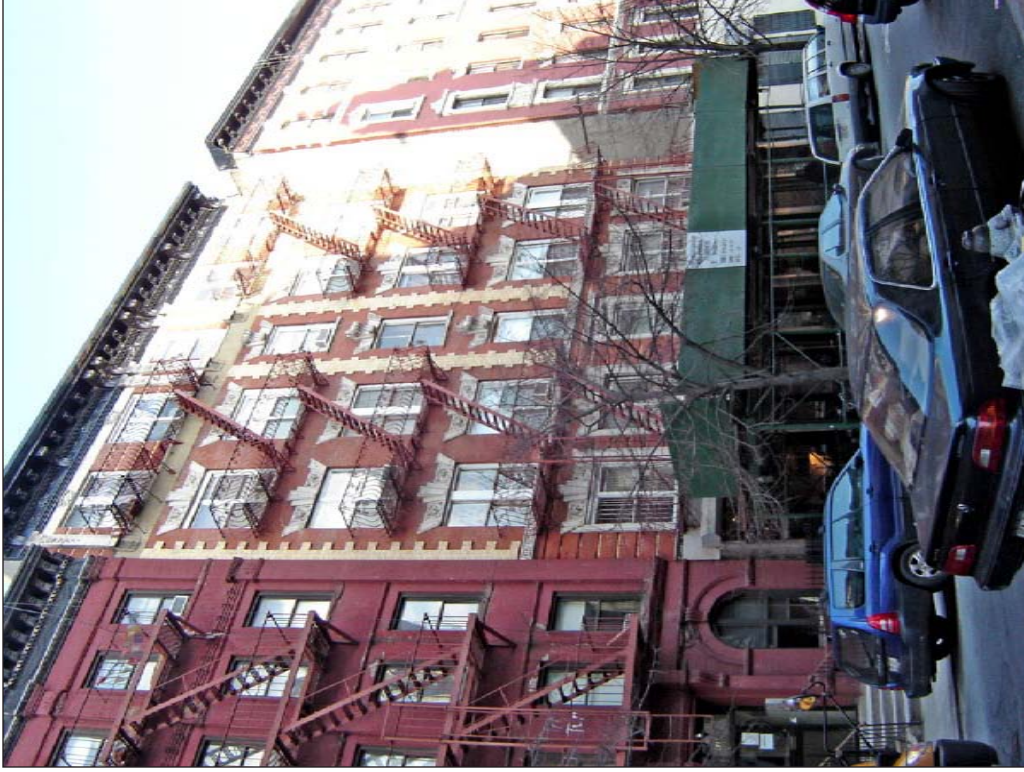
Figure D-53



Tenement at 229 East 10th Street (106) 104



Italianate row house at 82 East 7th Street (107) 105



Allen Ginsberg apartment at 437 East 12th Street (108) 106



Tenement at 193 Avenue A (109) 107



Church of Mary Help of Christians (110) 108



St. Nicholas of Myra Orthodox Church (111) 109

**Potential Historic Resources
East Village Rezoning Area**

Figure D-56



Row houses at 402-404 East 9th Street (112) 110



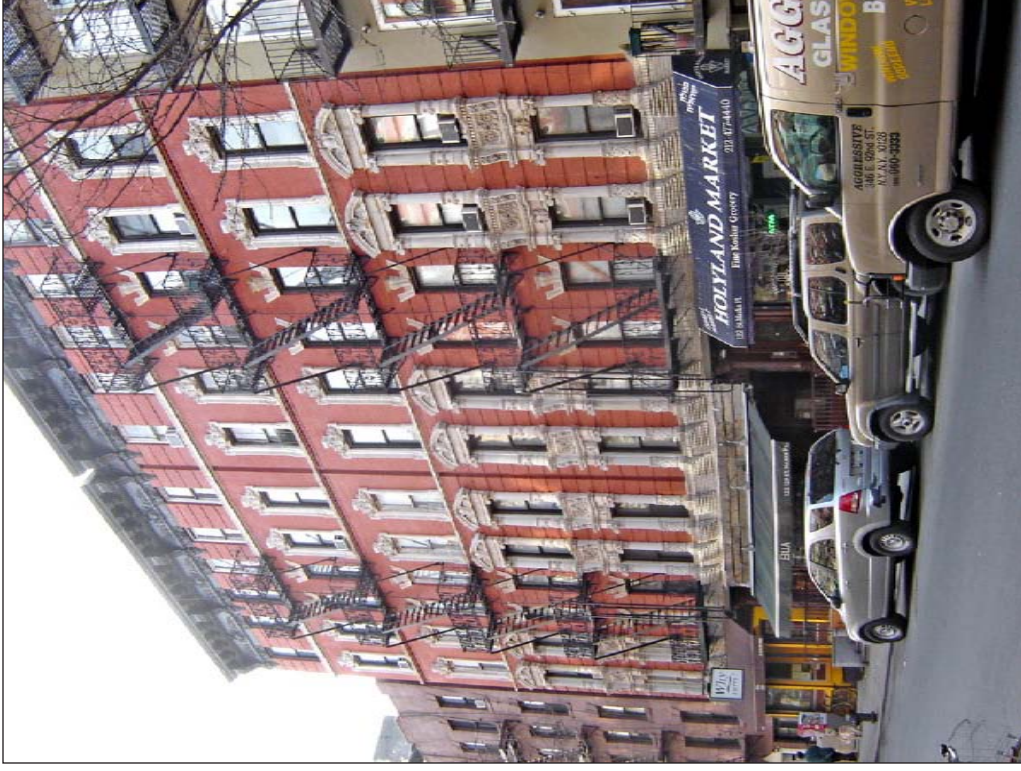
Tenement at 85 St. Mark's Place (113) 111

**Potential Historic Resources
East Village Rezoning Area**

Figure D-57



Tenement at 115 St. Mark's Place (114) 112



Tenement at 122-126 St. Mark's Place (115) 113



Tenements at 95-99 East 7th Street (116). 114
View of 97-99 East 7th Street



Tenements at 95-99 East 7th Street (116). 115
View of 95-97 East 7th Street



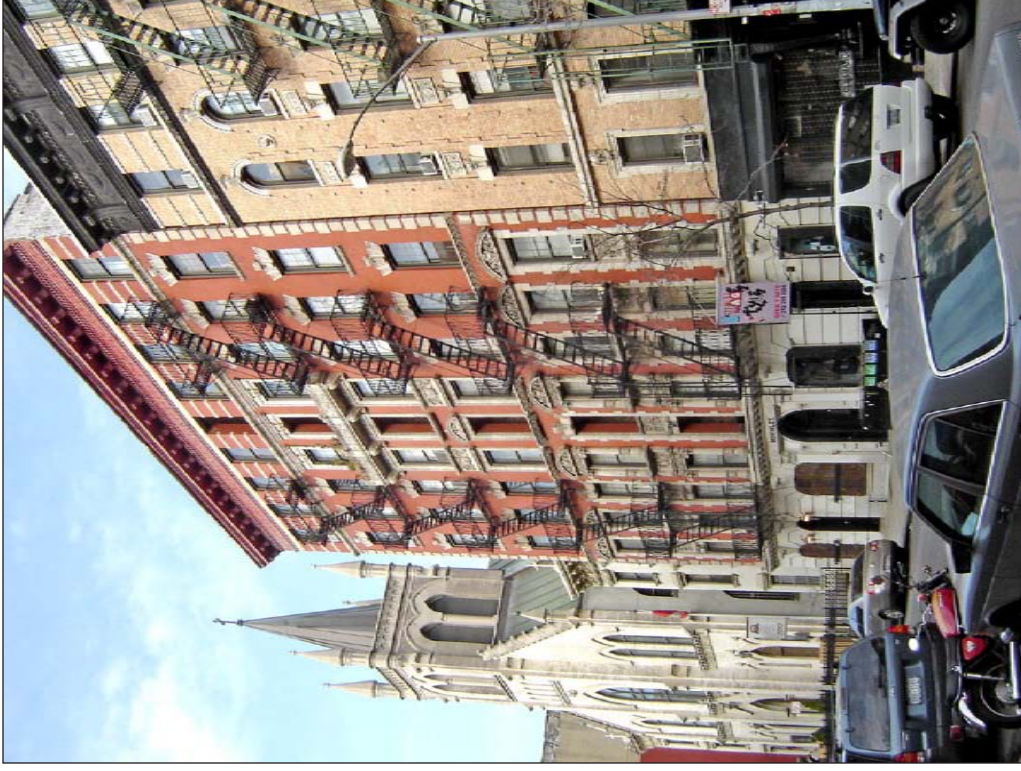
Church of St. Stanislaus Bishop and Martyr (117) 116



Church of St. Stanislaus Convent (117) 117



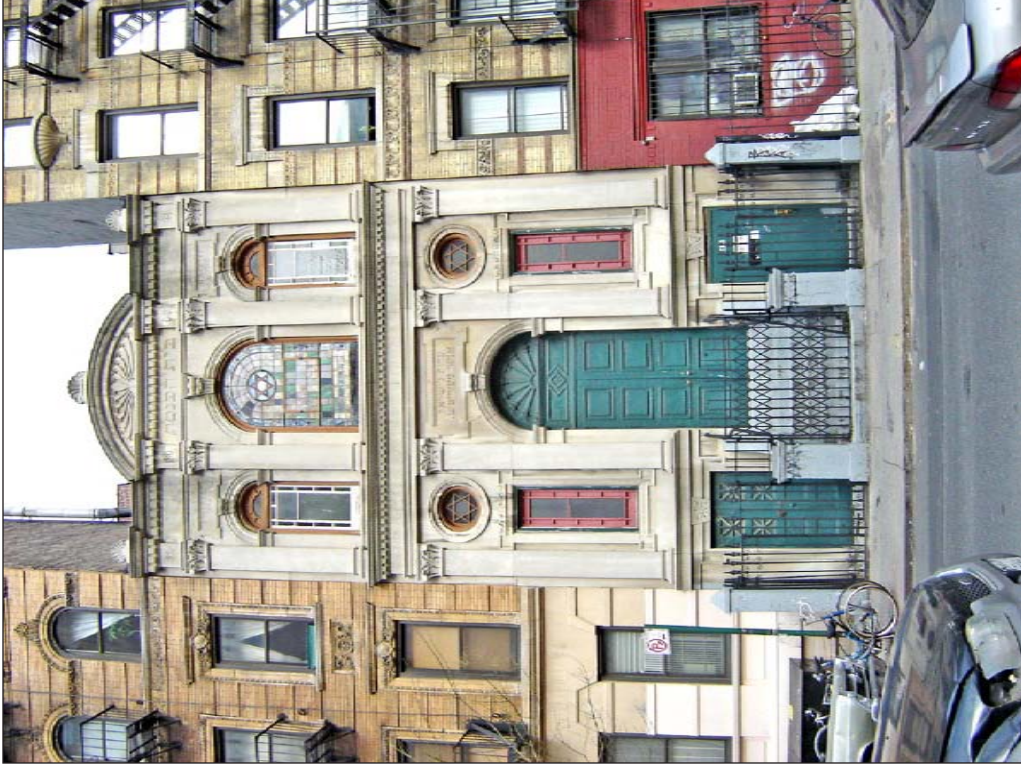
Church of St. Stanislaus Rectory (117) 118



McKinley Apartments (118) 119



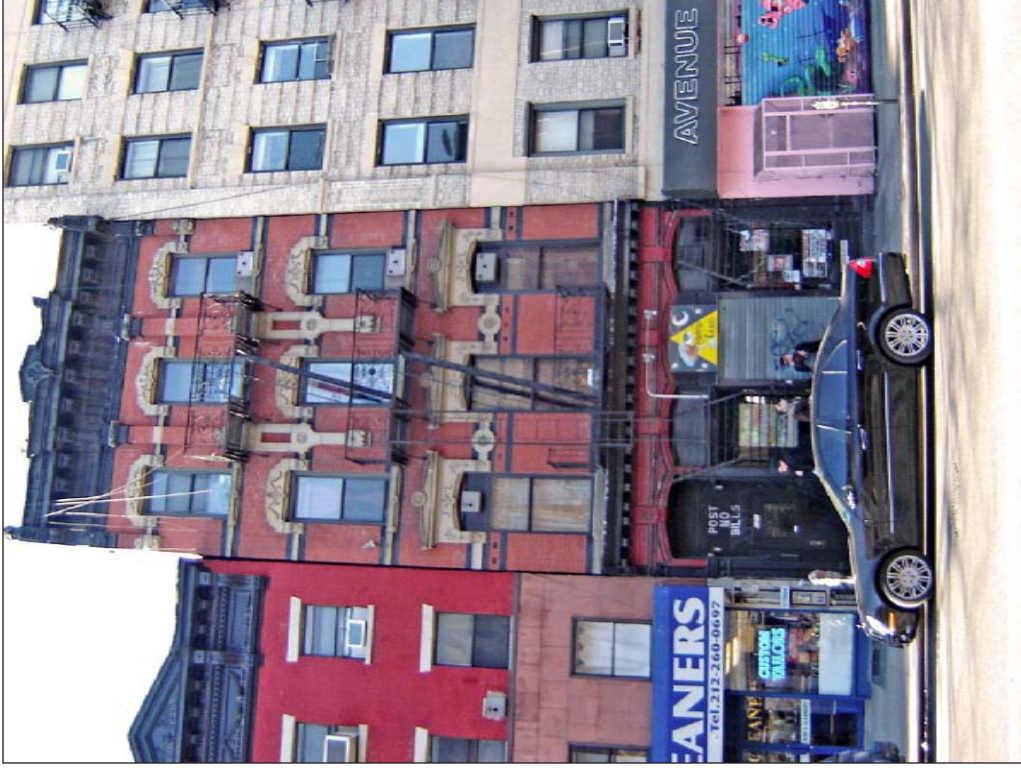
Tenement at 106 East 7th Street (119) 120



Congregation Adas Yisroel Anshe Mezeritz (120) 121



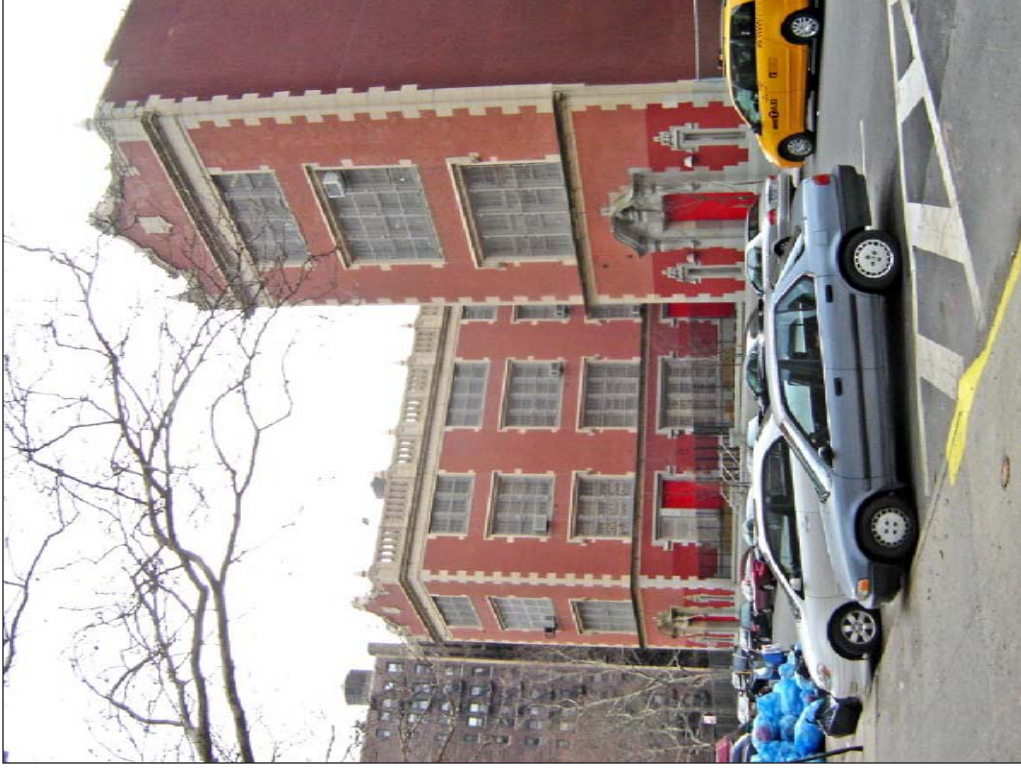
Substation at 421 East 6th Street (121) 122



Tenement at 101 Avenue A (122) 123



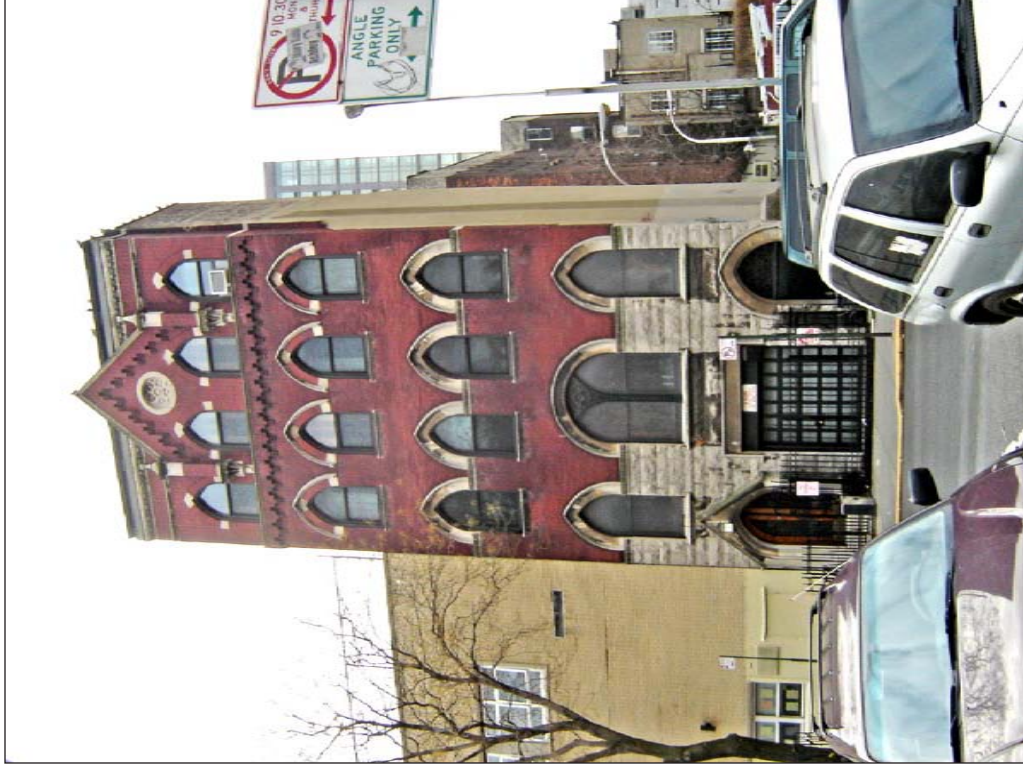
Public School 63 (123). 124
East 3rd Street facade



Public School 63 (123). 125
East 4th Street facade



Ageloff Towers (124) 126



St. Nicholas Roman Catholic Church Rectory 127
at 135 East 2nd Street (125)



Tenements at 517-519 East 11th Street (126) 128



Tenements at 517-519 East 11th Street (126). 129
Detail of ornamentation

**Potential Historic Resources
East Village Rezoning Area**

Figure D-66



Father's Heart Ministry Center (127) 130



Public School 61 (128) 131

**Potential Historic Resources
East Village Rezoning Area**

Figure D-67



Engine Company 28 at 604 East 11th Street (129) 132



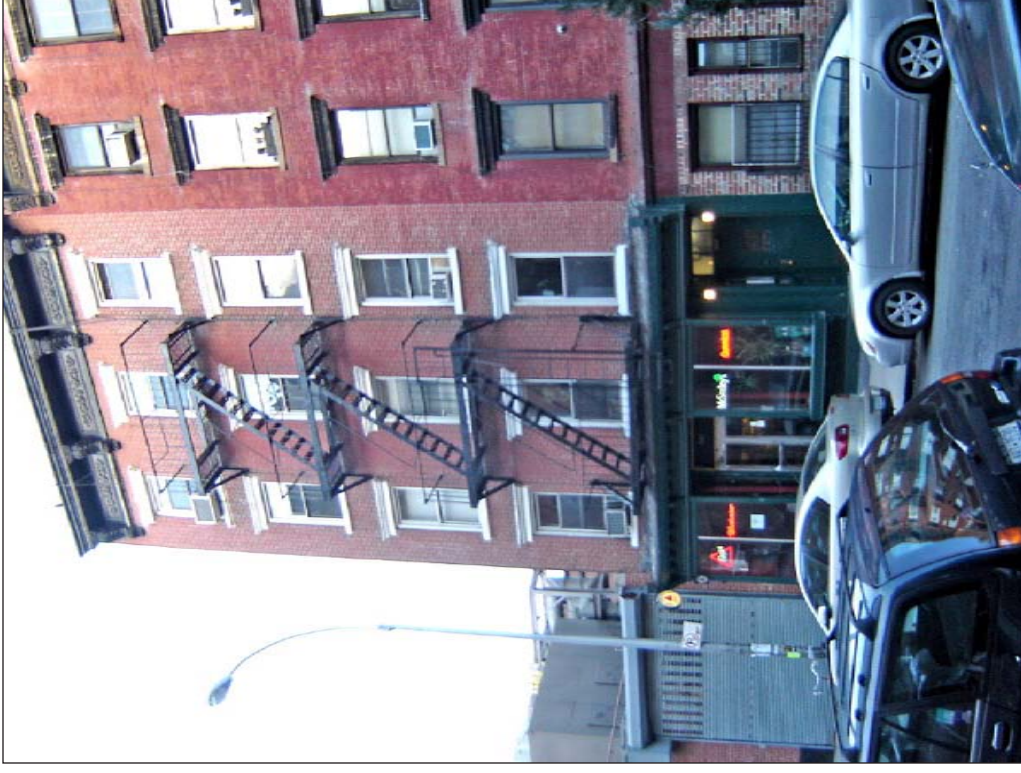
Vazac Hall (130) 133

Potential Historic Resources East Village Rezoning Area

Figure D-68



Tenement at 187 East 7th Street (131) 134



Tenement at 507 East 5th Street (132) 135



Tenement at 529 East 5th Street (133) 136



Tenement at 207 East 4th Street (134) 137



Tenement at 223 East 4th Street (135) 138



Roman Catholic School for Boys (136) 139



Manhattan Housing model apartments 140
at 176 East 3rd Street (137)



Allen Ginsberg apartment at 170 East 2nd Street (138) 141

Potential Historic Resources East Village Rezoning Area Figure D-72



Henington Hall (139) 142



Tenements at 47-51 Avenue B (140) 143

**Potential Historic Resources
East Village Rezoning Area**



United Brethren Mission and Congregation Ahawath Yeshurun 144
Shara Torah (141)



Public School 105 (142) 145

Potential Historic Resources East Village Rezoning Area Figure D-74



Church of the Holy Cross Mission School at
300 East 4th Street (143) 146



La Plaza Cultural (144) 147

Potential Historic Resources East Village Rezoning Area

Figure D-75



9th Street Community Garden Park (145) 148



Public School 36 (146) 149

**Potential Historic Resources
East Village Rezoning Area**



Factory at 735 East 9th Street (147) 150



Factory at 139-145 Avenue D (148) 151



Tenement at 236 East 7th Street (149) 152



Tenement at 236 East 7th Street (149). 153
Detail of storefront

**Potential Historic Resources
East Village Rezoning Area**

Figure D-78



Row house at 253 East 7th Street (150) 154



Row house at 263 East 7th Street (151) 155



Row house at 272 East 7th Street (152) 156



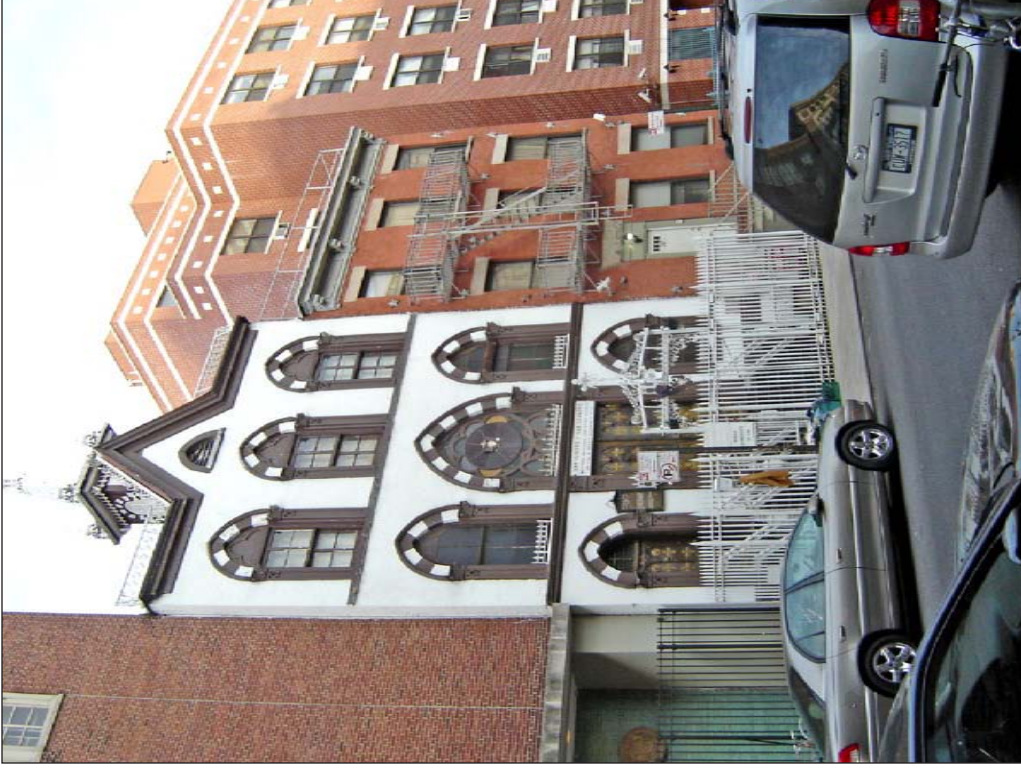
Row houses at 258-266 East 7th Street (153) 157

**Potential Historic Resources
East Village Rezoning Area**

Figure D-80



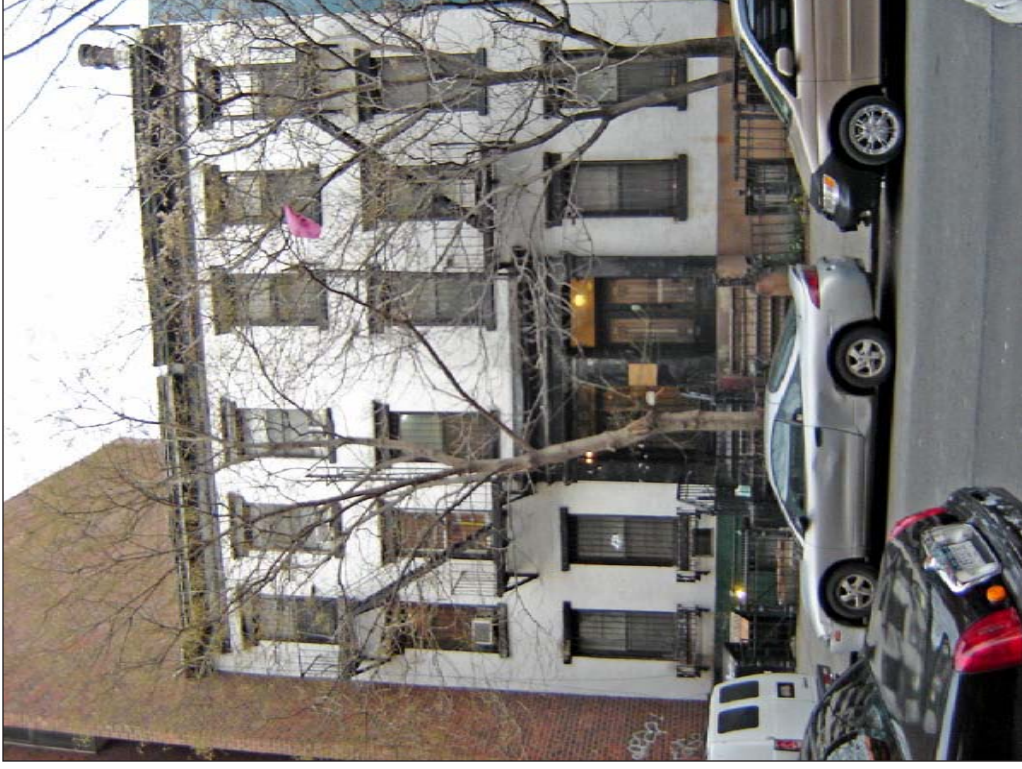
Row houses at 262-264 East 7th Street (153) 158



San Ysidora y San Leandro (154) 159



Tenement at 340 East 4th Street (155) 160



Row houses at 285-287 East 3rd Street (156) 161



Row house at 316 East 3rd Street (157) 162



Bitter and Moretti Sculptors Studio (158) 163



Tifereth Israel Town and Village Synagogue (159) 164

**Potential Historic Resources
East Village 400-Foot Study Area**



357 Bowery (160) 165

**Potential Historic Resources
East Village 400-Foot Study Area**
Figure D-85



Yonah Schimmel Knish Bakery (161) 166



Congregation Erste Warshawer (162) 167



Institutional building at 61 Rivington Street (163) 168



Federal row house at 143 Allen Street (164) 169

Potential Historic Resources Lower East Side Rezoning Area

Figure D-87



Former public baths at 133-135 Allen Street (165) 170



Tenement at 91 Allen Street (166) 171

**Potential Historic Resources
Lower East Side Rezoning Area**

Figure D-88



Tenement at 2 Clinton Street (167) 172



Congregation Chasam Sopher (168) 173



Tenement at 29 Clinton Street (169) 174



Streit's Matzo Factory (170). 175
View east on Rivington Street

**Potential Historic Resources
Lower East Side Rezoning Area**



Streit's Matzo Factory (170),
View west on Rivington Street 176

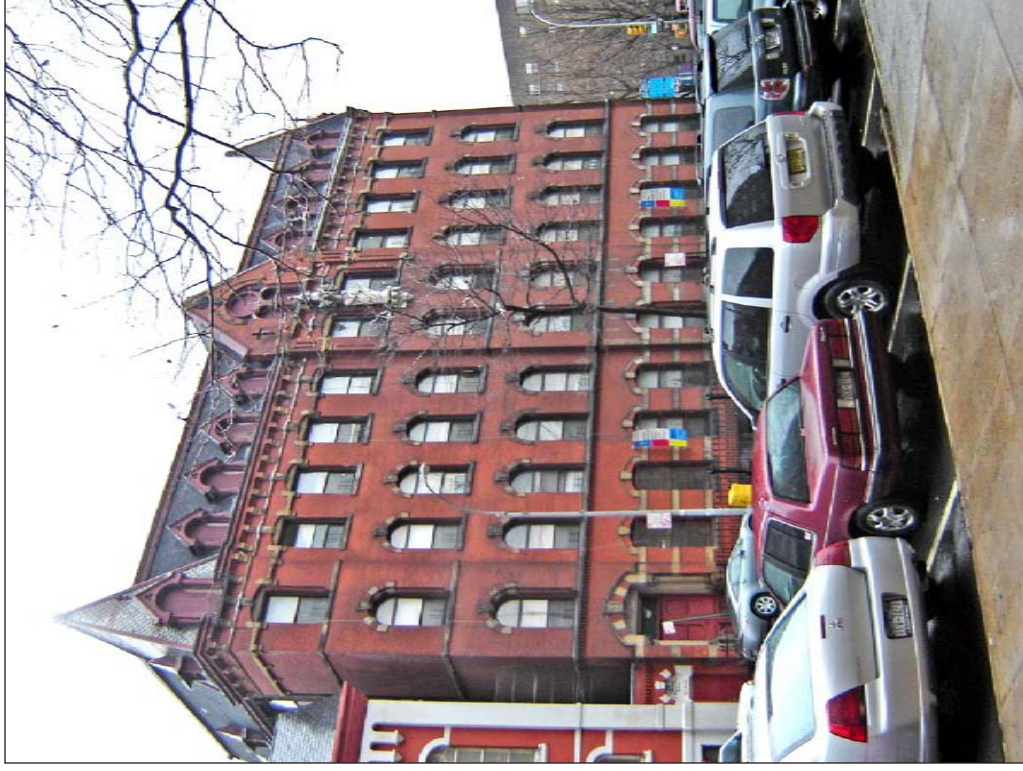


Tenement at 71 Clinton Street (171) 177

Potential Historic Resources Lower East Side Rezoning Area Figure D-91



Our Lady of Sorrows Church (172) 178



Our Lady of Sorrows School (172) 179



Our Lady of Sorrows School (172). 180
Detail of fence



Our Lady of Sorrows Rectory (172) 181

**Potential Historic Resources
Lower East Side Rezoning Area**

Figure D-93



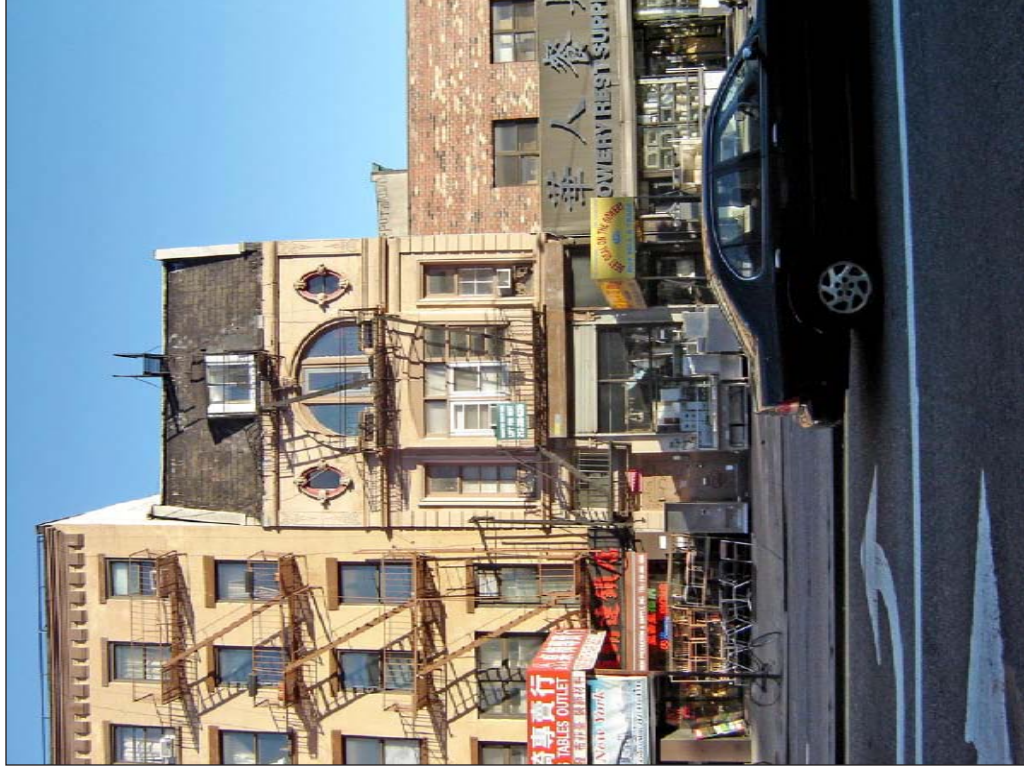
Public School 4 at 203 Rivington Street (173) 182

**Potential Historic Resources
Lower East Side Rezoning Area**

Figure D-94



Bowery Mission (174) 183



185 Bowery (175) 184



30 St. Mark's Place (176) 185



210 East 5th Street (177) 186



64 East 4th Street (178) 187



43 Second Avenue (179) 188



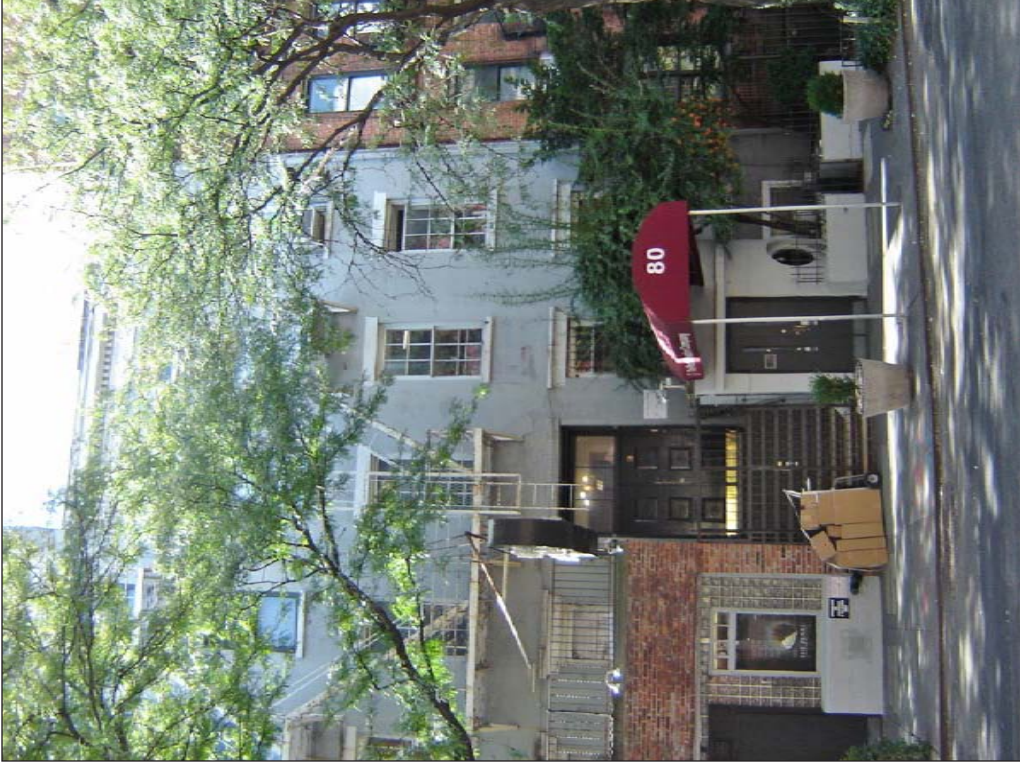
26 East 2nd Street (180) 189



30 East 2nd Street (181) 190



138 Second Avenue (183) 191



78-80 St. Mark's Place (184) 192



78-80 St. Mark's Place (184) 193



St. Mary's American Orthodox Greek Catholic Church (185) 194



28 Avenue A (186) 195



269 East 7th Street (187) 196



275 East 7th Street (188) 197



268 East 7th Street (189) 198



314 East 3rd Street (190) 199

**LPC - Identified Resources
East Village Rezoning Area**



View north on Orchard Street from Broome Street 200



View north on Orchard Street from Grand Street 201

**LPC - Identified Resources
Lower East Side Rezoning Area
Potential Orchard Street Historic District (H)**



View north on Eldridge Street from Grand Street 202



View north on Eldridge Street from Broome Street 203

**LPC - Identified Resources
Lower East Side Rezoning Area
Potential Eldridge Street Historic District (I)**



View east on Broome Street from Eldridge Street 204

**LPC - Identified Resources
Lower East Side Rezoning Area
Potential Eldridge Street Historic District (I)**



View west on Stanton Street from Clinton Street 205



View south on Clinton Street from Stanton Street 206

**LPC - Identified Resources
Lower East Side Rezoning Area
Potential Clinton, Rivington, Stanton Street Historic District (J)**



View west on Rivington Street from Clinton Street 207



View south on Clinton Street from Rivington Street 208

**LPC - Identified Resources
Lower East Side Rezoning Area
Potential Clinton, Rivington, Stanton Street Historic District (J)**



Sunshine Theater, 143 East Houston Street (191) 209



Provident Loan Society, 223 East Houston Street (192) 210

**LPC - Identified Resources
Lower East Side Rezoning Area**



141 Ludlow Street (193) 211



New York Telephone Company Exchange, 130 Orchard Street (194) 212

**LPC - Identified Resources
Lower East Side Rezoning Area**



Bank of the United States, 77 Delancey Street (195) 213

**LPC - Identified Resources
Lower East Side Rezoning Area**



Eastern Dispensary, 75 Essex Street (196) 214



E. Ridley & Sons Department Store, 315-321 Grand Street (197) 215

**LPC - Identified Resources
Lower East Side 400-Foot Study Area**



345 Grand Street (198) 216



Public School 42, 71 Hester Street (199) 217

LPC - Identified Resources
Lower East Side 400-Foot Study Area

Figure D-113



Junior High School 22, 111 Columbia Street (200) **218**

**LPC - Identified Resources
Lower East Side 400-Foot Study Area**