

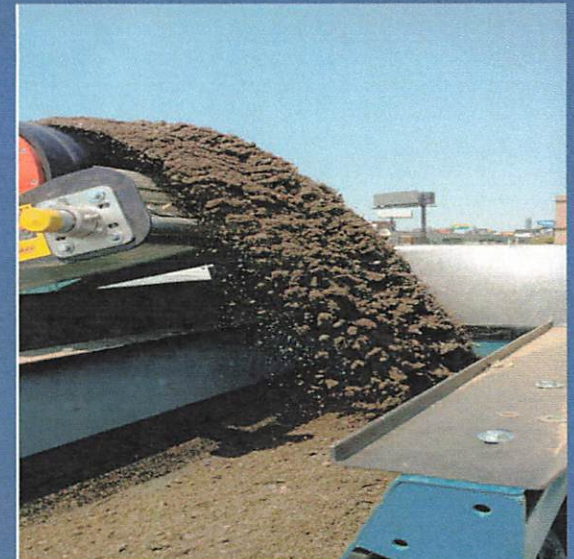
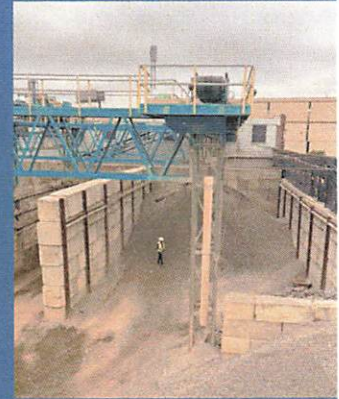
Hunter's Point Recycling



Proposed Green Improvements to CB2

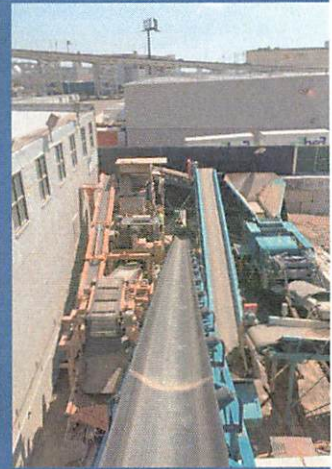
HP Background

- Operate a Rock and Dirt Transfer Station
- Location: 29-55 Hunters Point Avenue (The corner of Hunters Point Ave and 29th Street in LIC)
- Lot size: 29,000 SQFT (land locked)
- Founded in 2010, operational in 2016



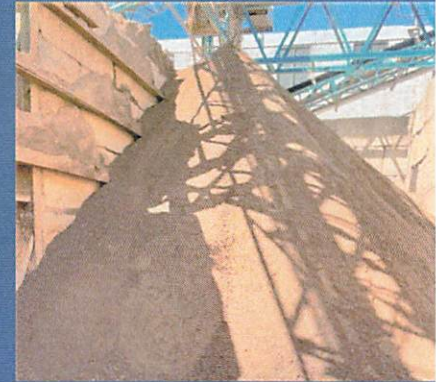
HP Operation

- Who we serve: The construction community
 - More specifically the vital infrastructure contractors
- Types of projects we serve: Green infrastructure, Parks, water/sewer mains, road/curb/sidewalk reconstruction, Treatment plants, and utility upgrades
- Material we accept: Rock, dirt, concrete, brick, and sand
- The 3 R's (Reduce, Reuse, Recycle)



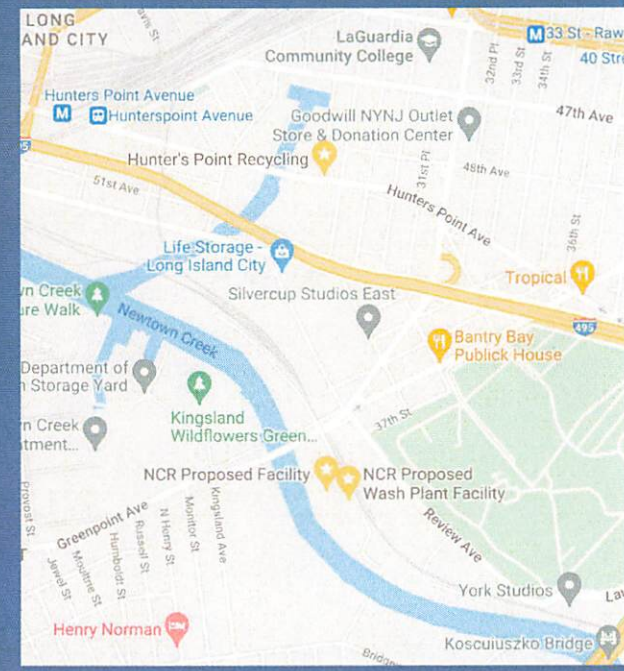
In the Dirt

- Process between 1200-1500 CY of material each day
 - Roughly 40% is recycled and returned to job sites within the boroughs
- Last month we had roughly 3,750 trucks go through our facility
 - Annualized to 45,000 trucks
- Roughly 1,050 trucks per month are hauling excess material out of state or bringing in virgin sand or stone products
 - Annualized to 12,600 trucks



Newtown Creek Recycling

- Operation: Rock and Dirt Transfer Station
- Location: 37-50/90 Railroad Avenue, LIC (bound by Newtown Creek and the railroad)
- Lot size: 101,000 SQFT
- Less than 1 mile from HP



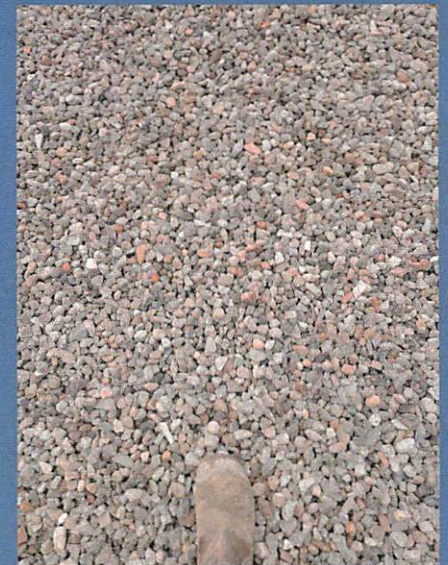
Key Features

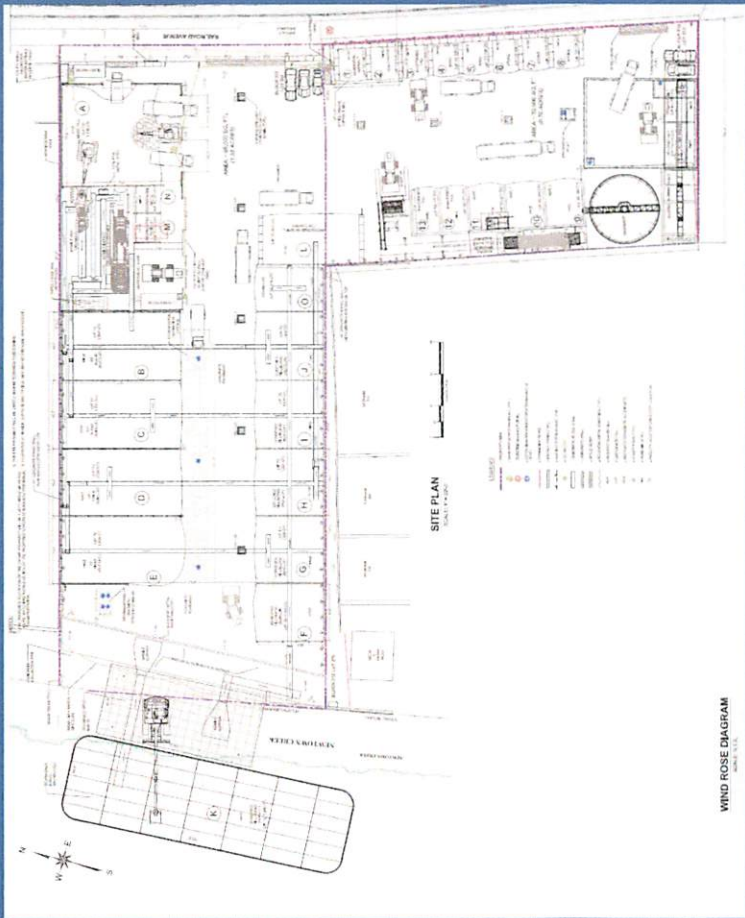
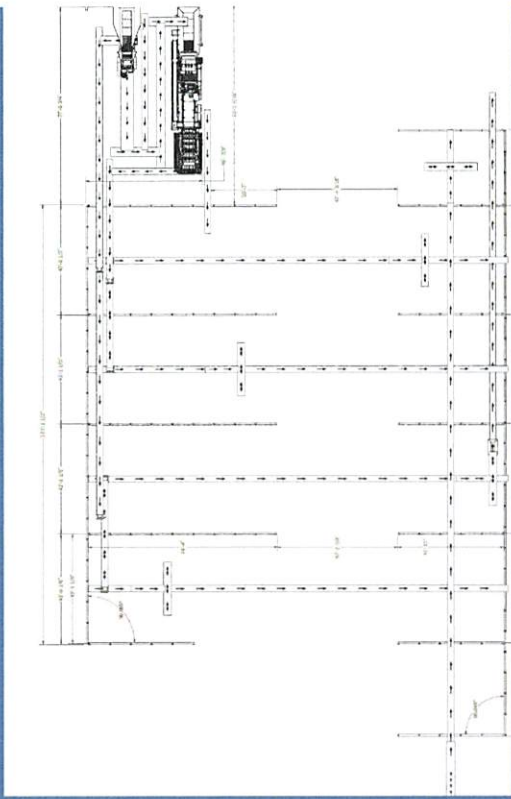


- Water and Rail access
 - Reduction of roughly 25% of total trucks
- Approved plans to repair and replace the deteriorated bulkhead currently at the site
- Processing operation will be done inside of a newly constructed building
 - Mitigating dust and noise concerns
- State of the art Wash Plant
 - Capacity to manufacture sand and stone from what we currently deem excess material ("waste")
 - 1st wash plant in NYC

Wash Plant

- Repurpose excess material into beneficial use products
- How: washes and scrubs the rock and dirt to separate the silt and clay from the sand and stone
- Reduce:
 - waste to landfills
 - Trucking of excess materials out of state
 - depletion of finite virgin sand and stone reserves
 - Trucking of virgin sand and stone
- Proven Technology





HPR Current Location

- If we get approval for NCR, we will move and close HPR
- Redevelop the Hunters Point Ave Location
- Possibilities:
 - Develop Studio Space
 - Life Science (Alexandria)
 - Lease to a local business

Overview

- Take trucks off the road (especially 29th street)
- Reduce Carbon Emissions
- Manufacture sand and stone from materials currently destined for landfills
- Make the essential construction industry greener
- Add jobs to the Community
- Make the Community a better place!!!

Thank You!