

Blissville Veterans Memorial Flagpole

Located between Review Ave., Greenpoint Ave, & Van Dam St.,
in the Borough of Queens.

Community Board 2 Presentation
June 23, 2022
NYC Parks

Total Budget: \$0.5m
City Council - \$.5m FY22

Project Size: 0.08 ac

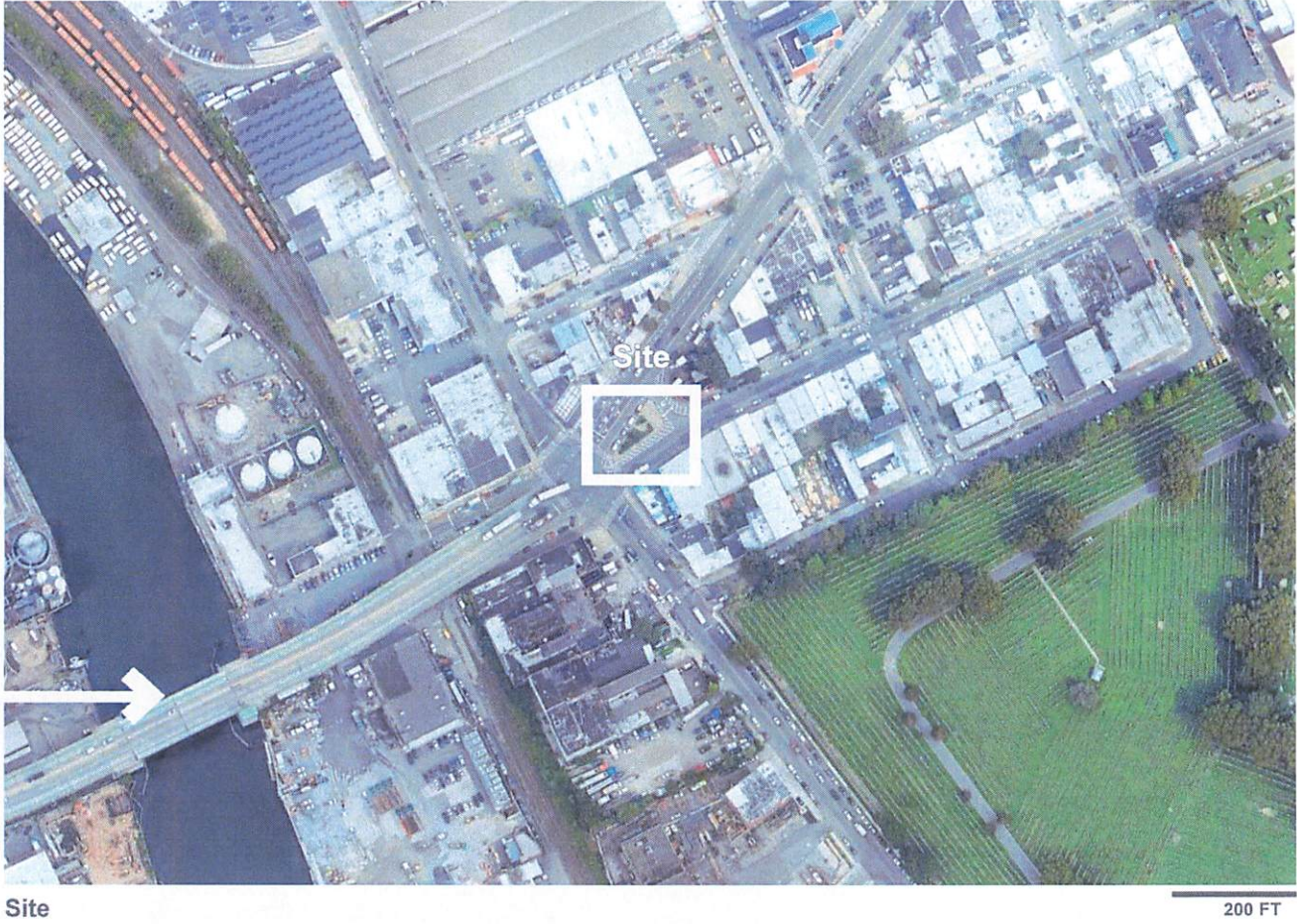
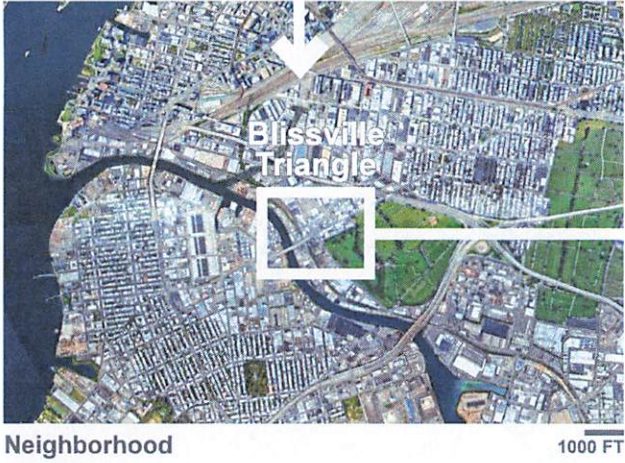


Parks

Goals

- Create a gathering space for the memorial and install a replacement flagpole
- Improve accessibility to the site
- Provide additional shade at the gathering space





Blissville Veterans Memorial Flagpole | Project Location



Base Flood Elevation (BFE):

Flood Hazard Zones

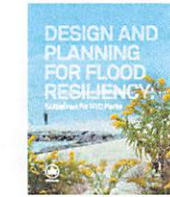
2015 Preliminary Flood Insurance Rate Map

- **V Zone (100-year floodplain subject to wave action)**
Areas along coasts subject to inundation by the 1% annual chance flood event with additional hazards associated with storm-induced waves.
- **A Zone (100-year floodplain)**
Areas subject to inundation by the 1% annual chance flood event.
- **Shaded X Zone (500-year floodplain)**
Areas within the 0.2% annual chance floodplain, areas of 1% annual chance flooding where average depths are less than 1 foot, areas of 1% annual chance flooding where the contributing drainage area is less than 1 square mile, and areas protected from the 1% annual chance flood by a levee.
- - - **Limit of Moderate Wave Action (LiMWA)**
The inland limit of the area expected to receive 1.5ft or greater breaking waves during the 1% annual chance flood event. Data from 2015 PFIRMs.

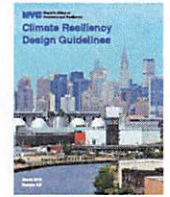
Future Floodplain 2050s

- **Future 1% Annual Chance Floodplain (100-year)**
- **Future 0.2% Annual Chance Floodplain (500-year)**

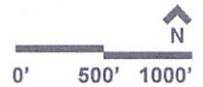
Further Information:



NYC Parks: Design and Planning for Flood Resiliency

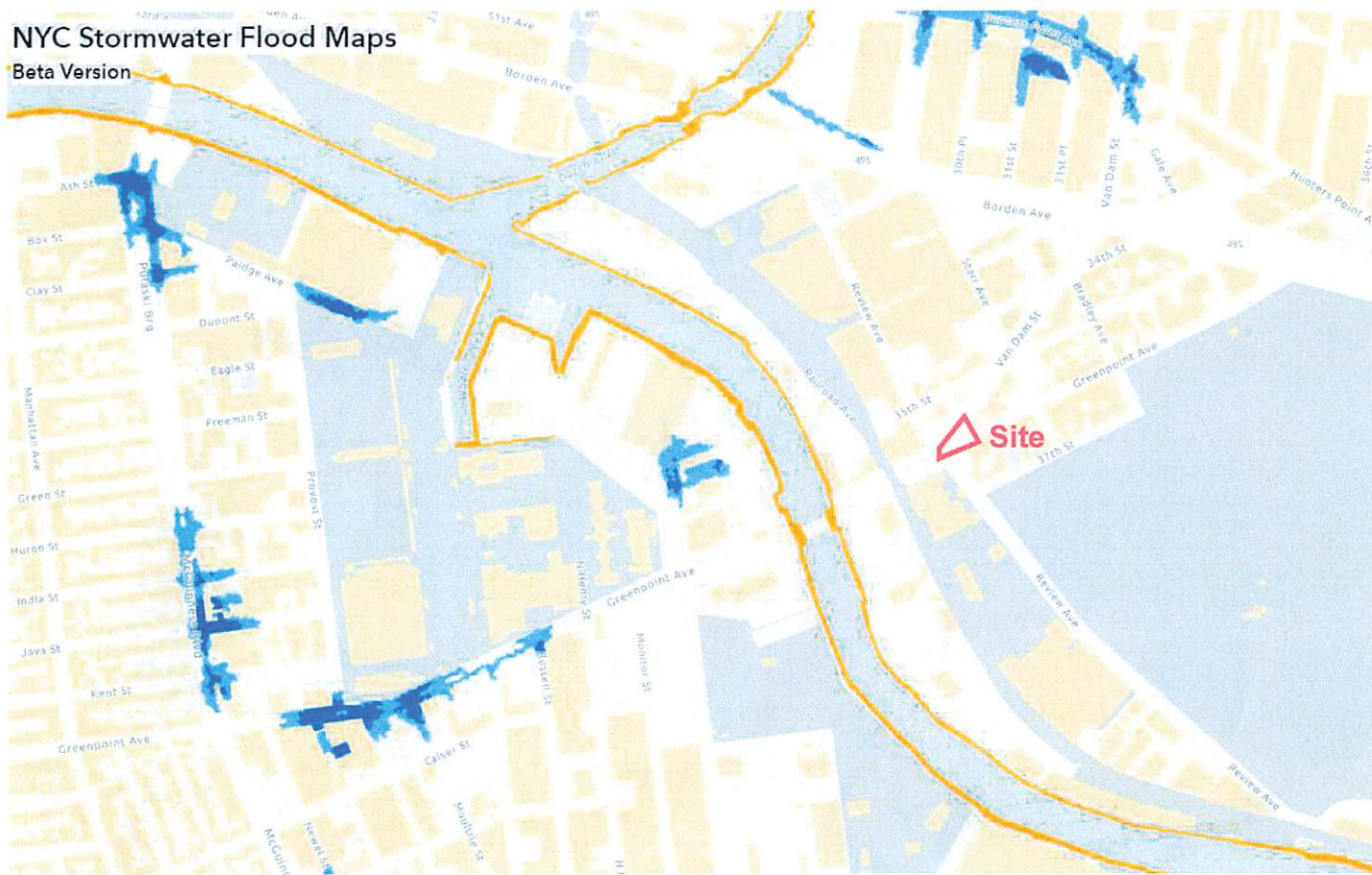


NYC MOR: Climate Resiliency Design Guidelines (v3.0)



NYC Stormwater Flood Maps

Beta Version



NYC Stormwater Flood Maps (Moderate Flooding)

- Area not included in analysis
- Future High Tides 2050
- National Wetlands Inventory
- Deep and Contiguous Flooding (1ft and greater)
- Nuisance Flooding (greater or equal to 4 in and less than 1 ft)

This map:

- Reflects roughly two inches of rain falling in one hour (also referred to as the 10-year storm, with approximately 10 percent chance of occurrence in any given year)
- Shows a moderate rainstorm that City infrastructure was not designed to handle.
- Reflects 2.5 feet of sea level rise, which is a high estimate for the 2050s.
- Includes impacts of potential blocked storm drains and outfalls from sea level rise.

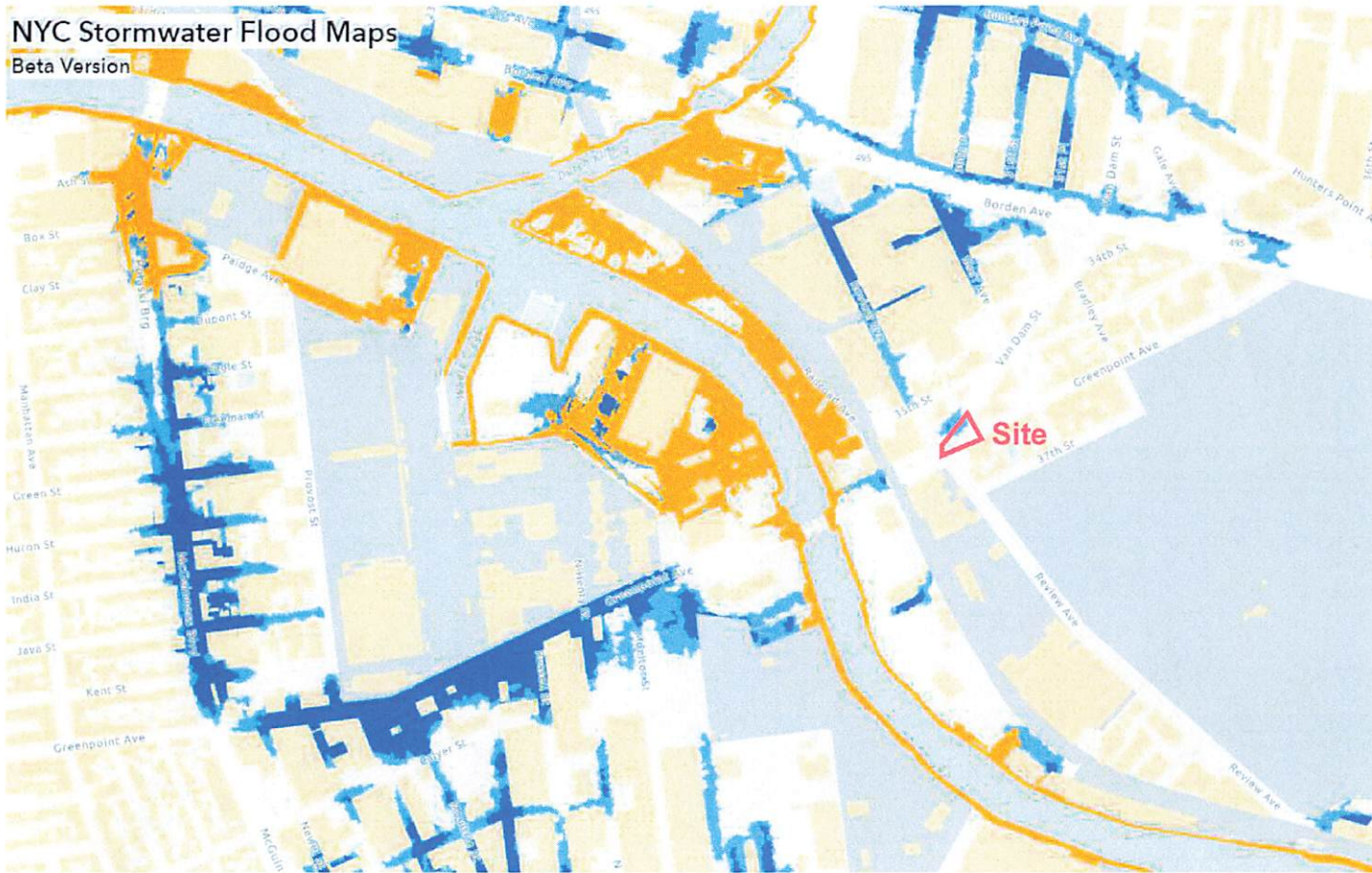
Flooding from a storm like this would temporarily disrupt transportation and enter buildings and basements, causing minor damages to contents and surfaces.



Blissville Veterans Memorial Flagpole | Flood Risk (Stormwater)



NYC Stormwater Flood Maps
Beta Version



NYC Stormwater Flood Maps
(Extreme Flooding)

- Area not included in analysis
- Future High Tides 2080
- National Wetlands Inventory
- Deep and Contiguous Flooding (1ft and greater)
- Nuisance Flooding (greater or equal to 4 in and less than 1 ft)

This map:

- Reflects roughly 3.5 inches of rain falling in one hour (also referred to as the 100 year storm, with approximately 1 percent chance of occurrence in any given year).
- Shows an extreme rainstorm that City infrastructure was not designed to handle.
- Reflects 4.8 feet of sea level rise, which is a high estimate for the 2080s.
- Includes impacts of potential blocked storm drains and outfalls from sea level rise.

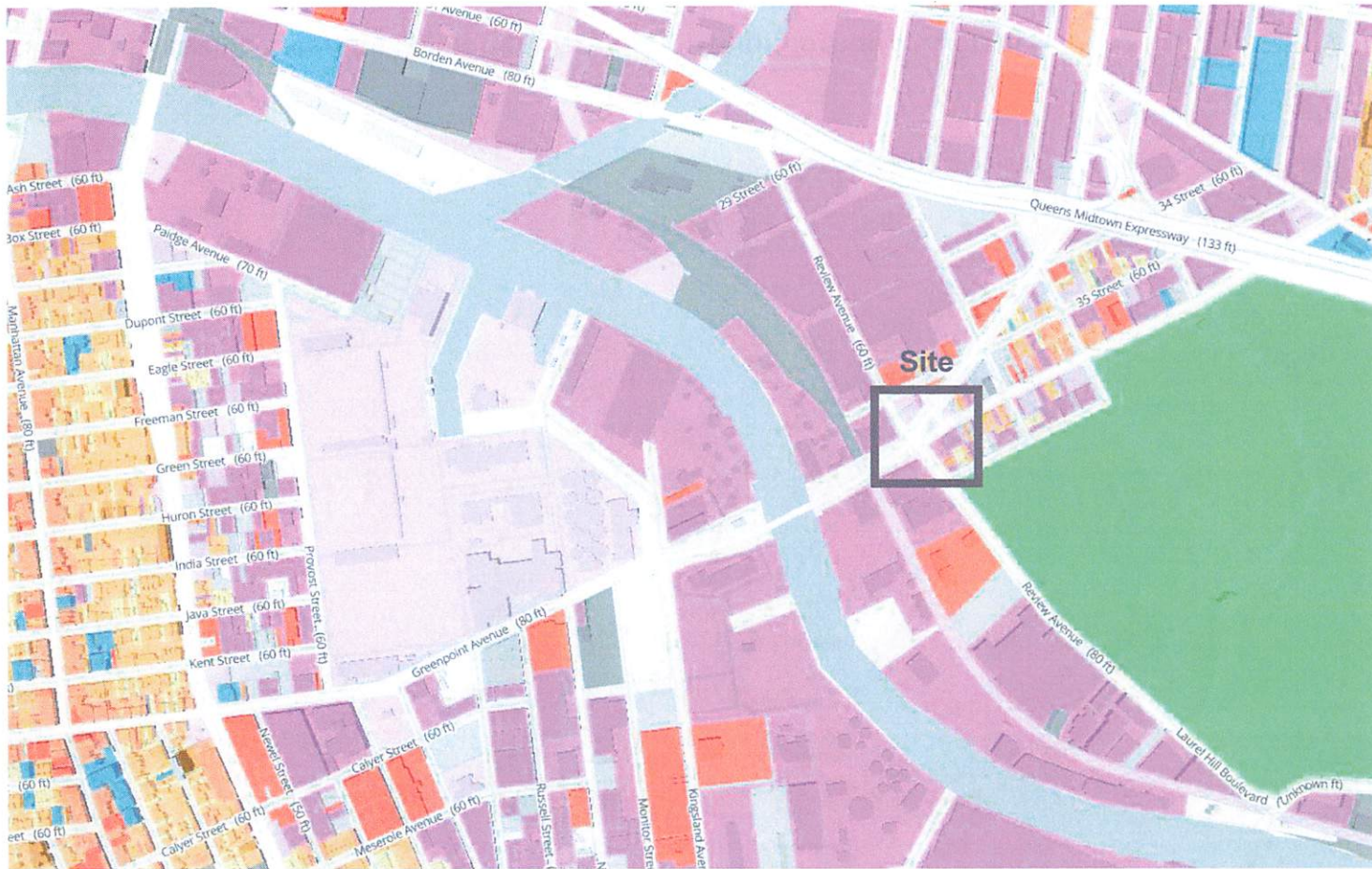
Flooding from a storm like this would:

- Cause widespread damage and disruption to both private and public property.
- Disrupt roads, subways, regional rail, and potentially power/communication networks.
- Cause flooding across coastal neighborhoods due to sea level rise impacts.



Blissville Veterans Memorial Flagpole | Flood Risk (Stormwater)





Land Use Categories

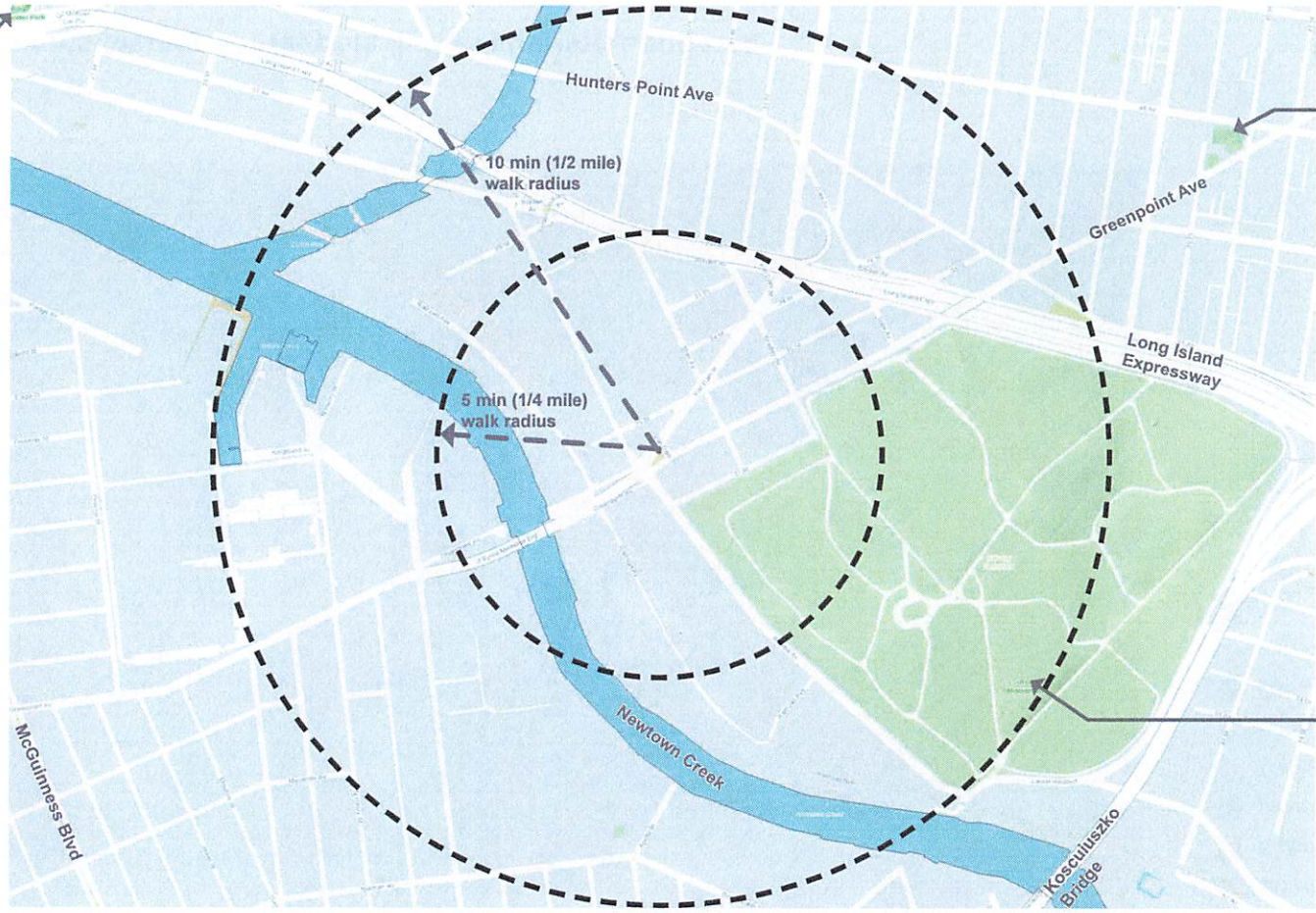
- 1 And 2 Family Residential
- Multi-Family Residential (Walkup)
- Multi-Family Residential (Elevator)
- Mixed Use
- Commercial & Office
- Industrial & Manufacturing
- Transportation / Utilities
- Public Facilities & Institutional
- Open Space And Outdoor Recreation
- Parking
- Vacant Land
- Other



Blissville Veterans Memorial Flagpole | Surrounding Land Use



Bridge and Tunnel Park
Basketball (1)
Handball (1)



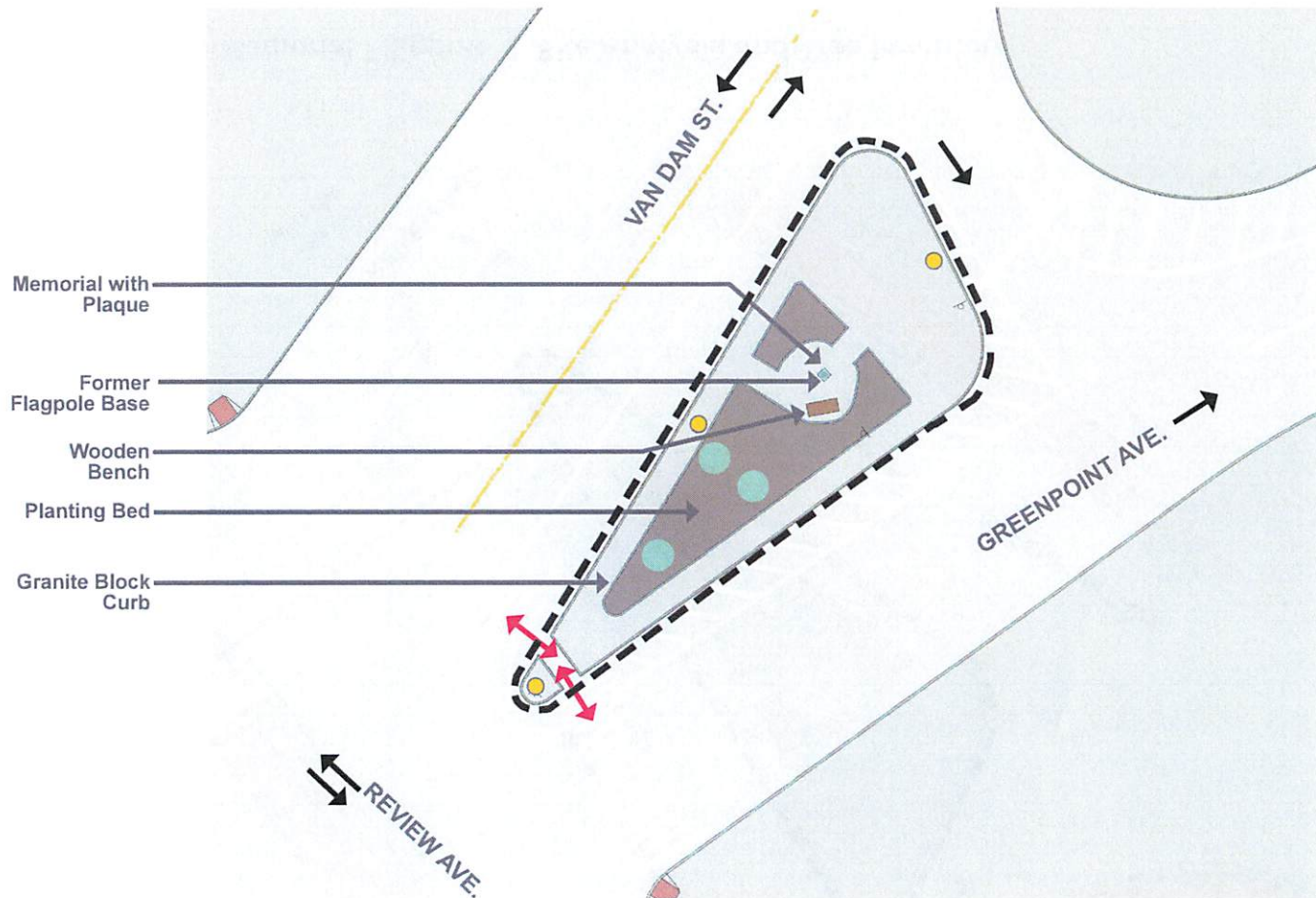
PS199 Community Park
1/2 Court Basketball (3)
Painted Games
Play Equipment

Calvary Monument

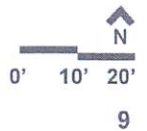


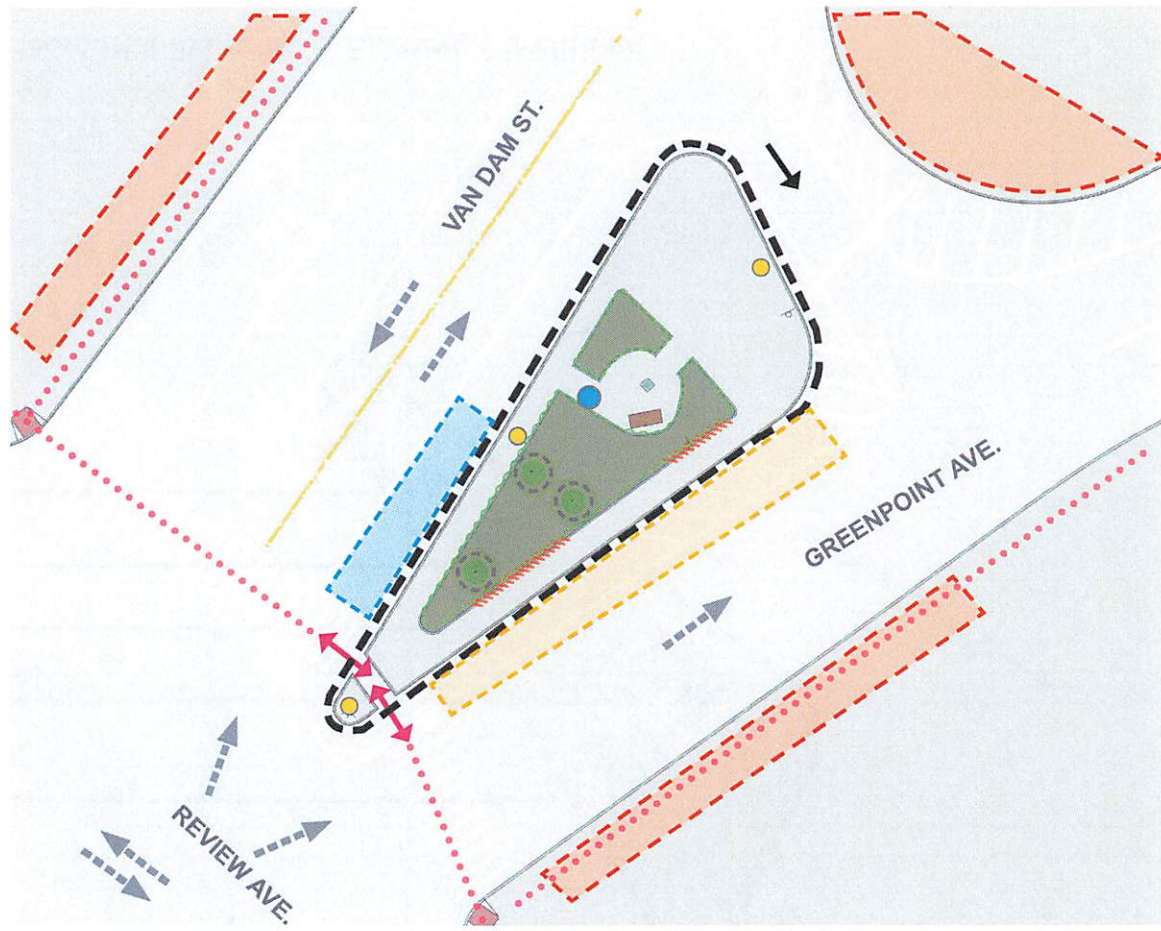
Blissville Veterans Memorial Flagpole | Neighborhood Context





Blissville Veterans Memorial Flagpole | Existing Conditions





Legend

- Project Limit
- Park Entrance
- Pedestrian Traffic
- Heavy Vehicle Traffic
- Survey Benchmark
- Lightpole
- Wall/Curb in poor condition
- Undesireable View
- Illegal Truck Parking
- Potential Future Citibike
- Healthy Shrub Plantings
- Canopy
Structural Root Zone
Critical Root Zone

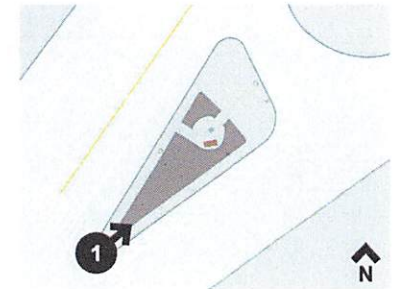


Blissville Veterans Memorial Flagpole | Site Analysis and Tree Inventory

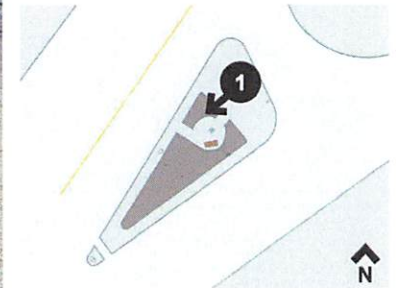




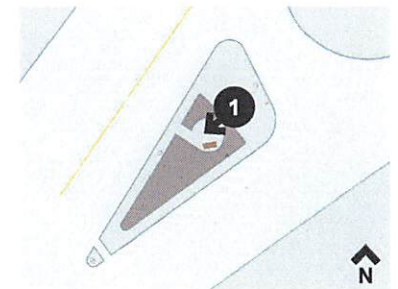
Blissville Veterans Memorial Flagpole | Historic Photo- 1930



Blissville Veterans Memorial Flagpole | Site Photo



Blissville Veterans Memorial Flagpole | Site Photo



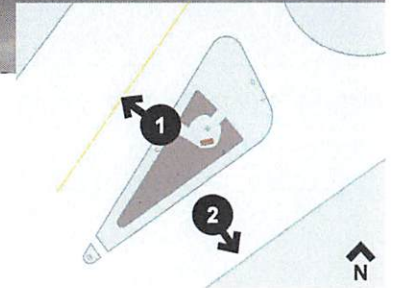
Blissville Veterans Memorial Flagpole | Site Photo



1 - View Across Van Dam St (Via Google)

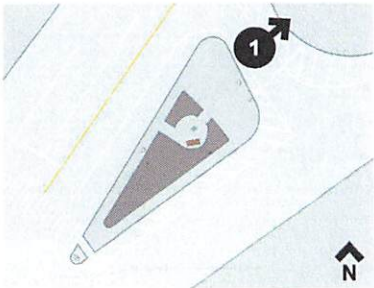


2 - View Across Green Point Ave (Via Google)





1 - View Across Unnamed Road (Via Google)



Blissville Veterans Memorial Flagpole | Site Photo

Community Priorities

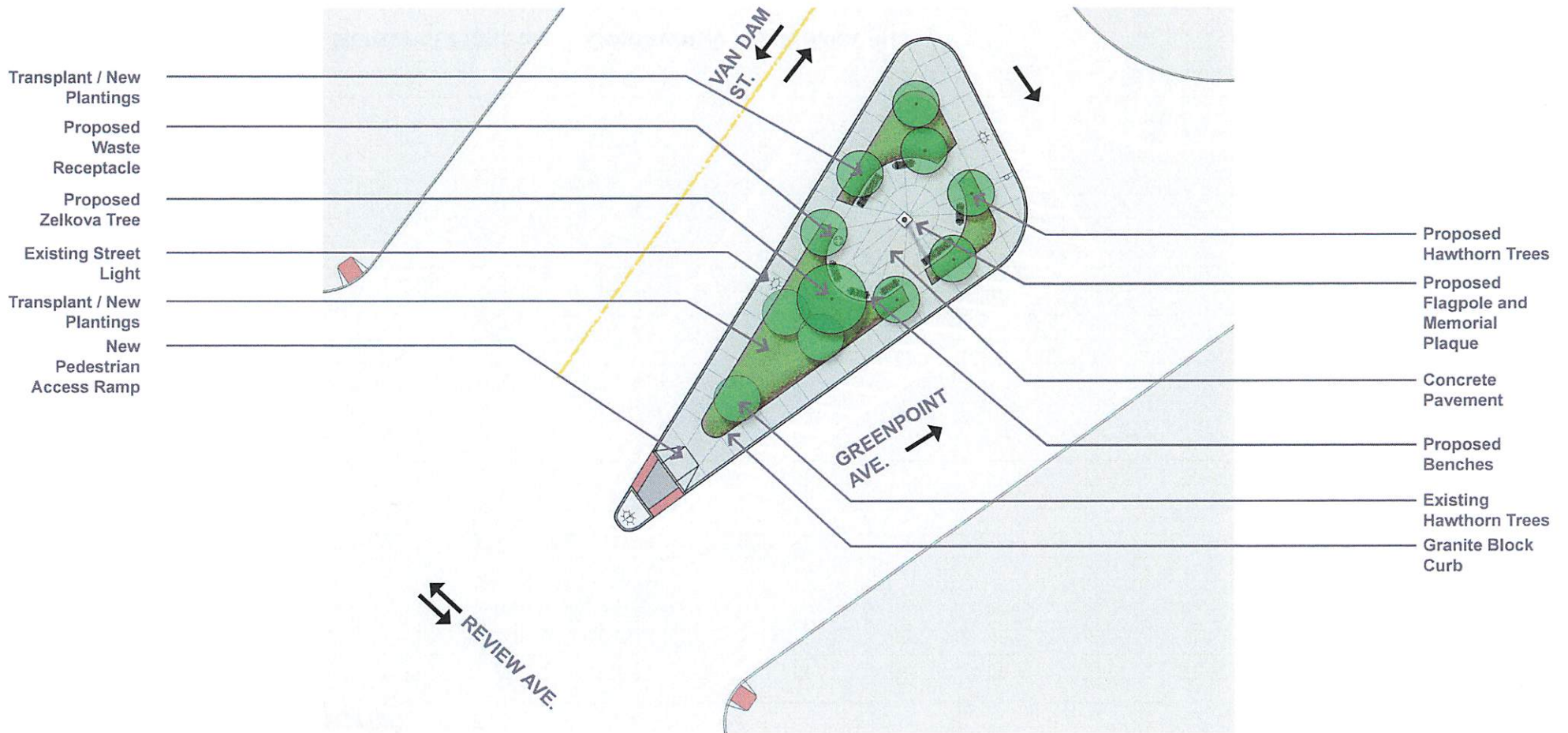
Flagpole and Memorial

Seating



NYC Parks

Blissville Veterans Memorial Flagpole | Community Input Meeting

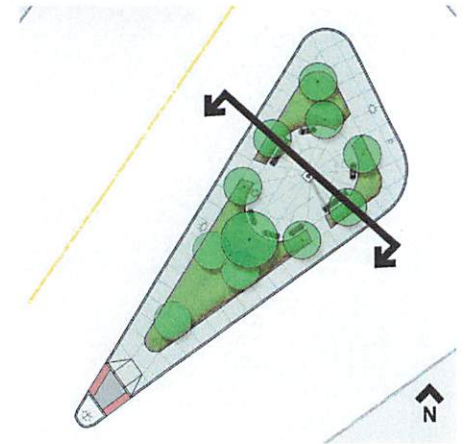


Blissville Veterans Memorial Flagpole | Schematic Plan





1 - Section Across Plaza Space



Blissville Veterans Memorial Flagpole | Section



Cockspur Hawthorn



Japanese Zelkova



Kallay Juniper



Coral Beauty Cotoneaster



Moss Pinks Phlox



Blissville Veterans Memorial Flagpole | Plant Palette



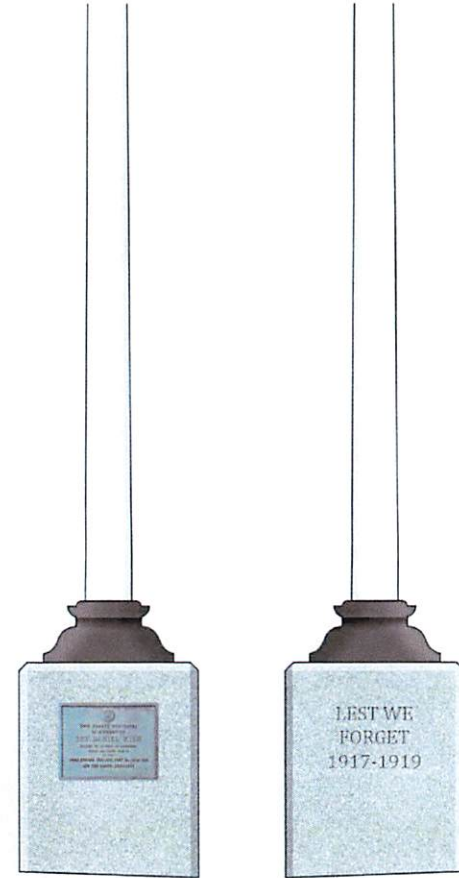
1964 World's Fair Bench - Milwaukee Brown RPL



Granite Block Edging



Public Space Receptacle - Silver



Granite Flagpole Base With Plaque and Engraving



NYC Parks

Blissville Veterans Memorial Flagpole | Site Furnishings



NYC Parks

Blissville Veterans Memorial Flagpole | Schematic Plan

